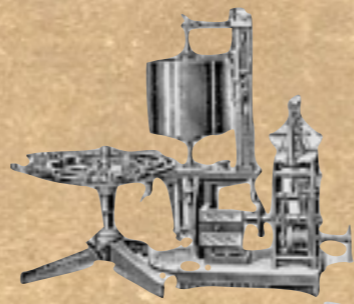


A 131

166/32131

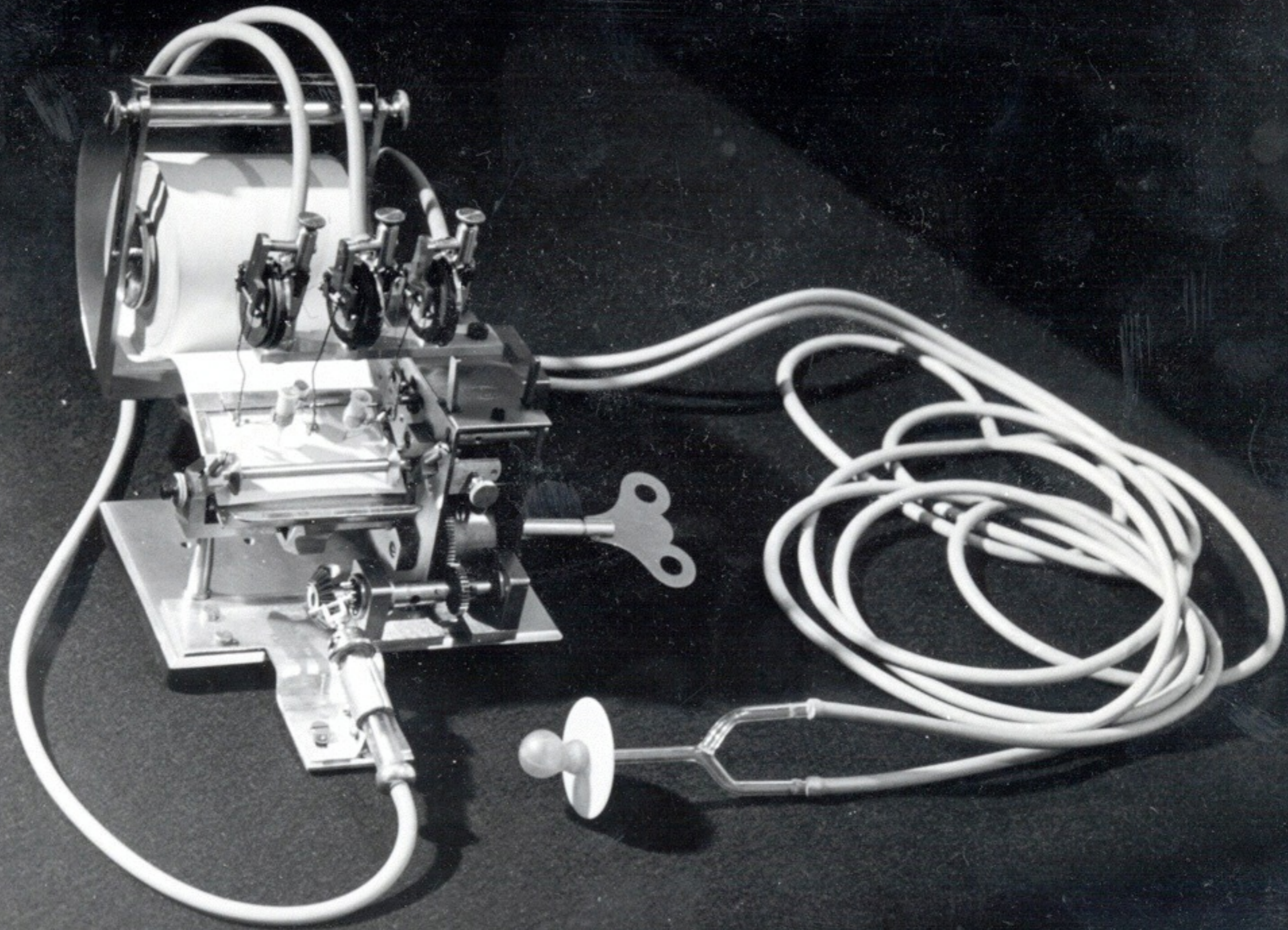
Vybrané části dějin psychologie
u kostce

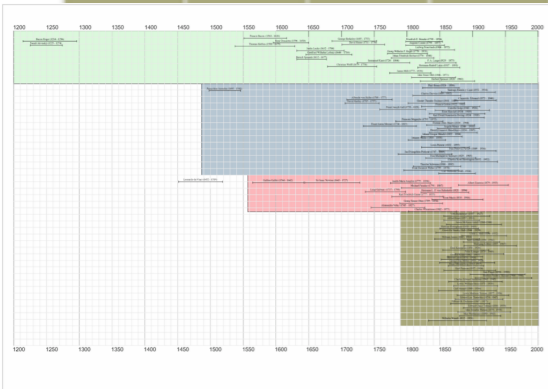
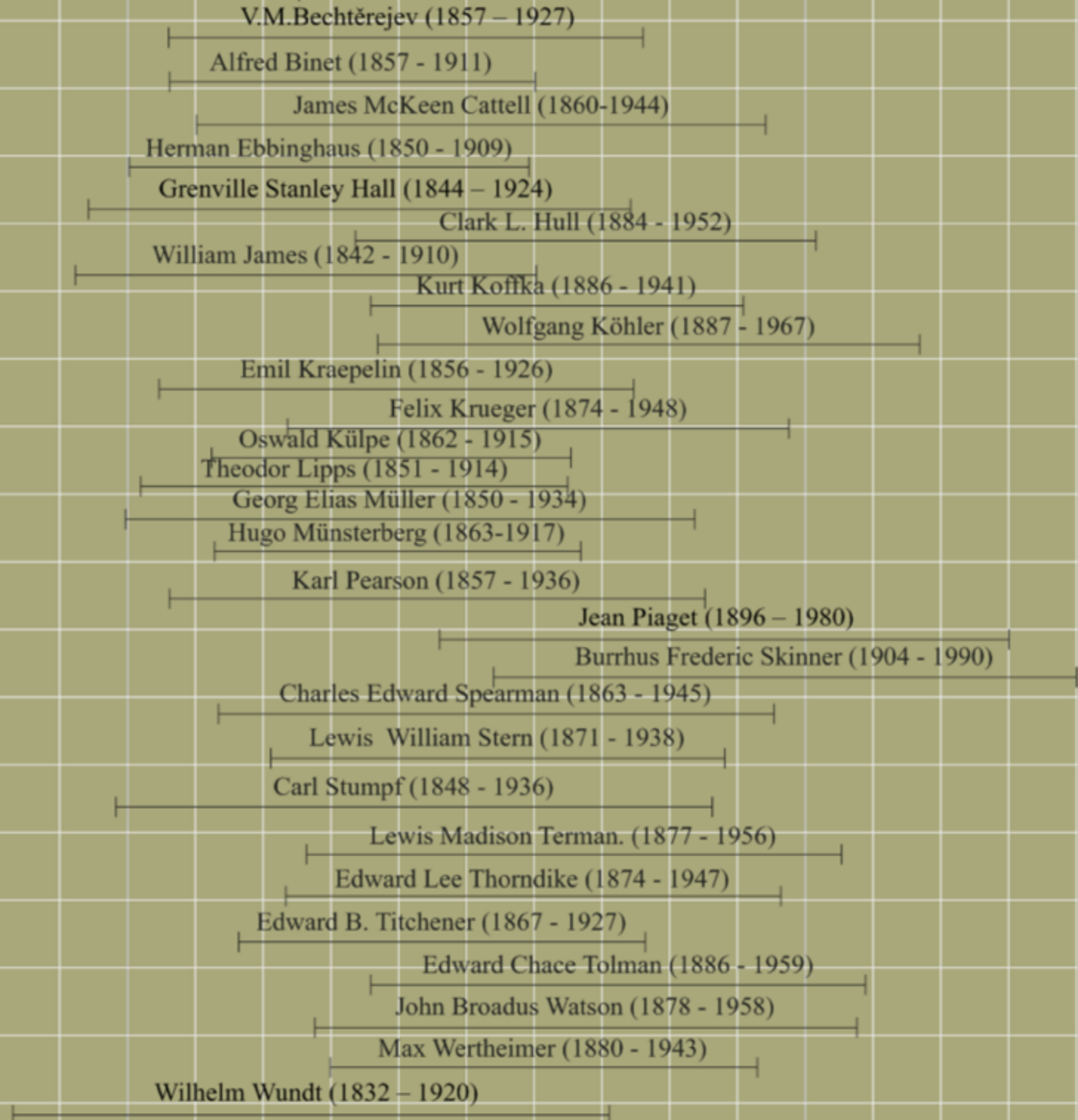


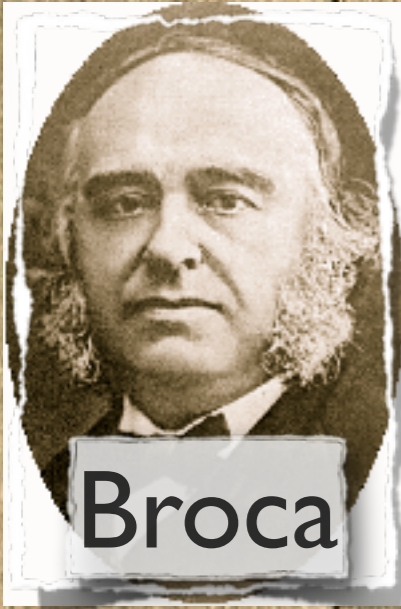
“Když můžeš to, o čem hovoříš, změřit a vyjádřit to v číslech, něco o tom víš; ale když to nemůžeš změřit ani vyčíslit, tvoje znalosti jsou chudé a neuspokojivé.”

Lord Kelvin









Broca



Feuerbach



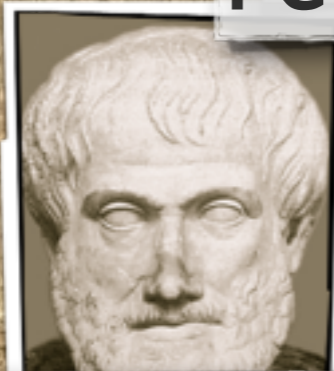
Hume



Binet



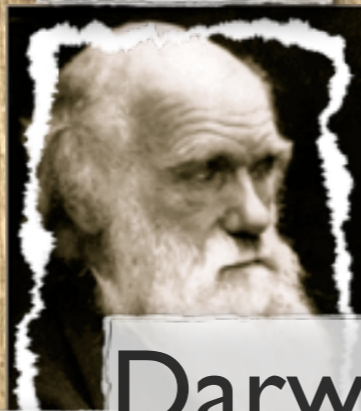
Kraepelin



Aristoteles



Ebbinghaus



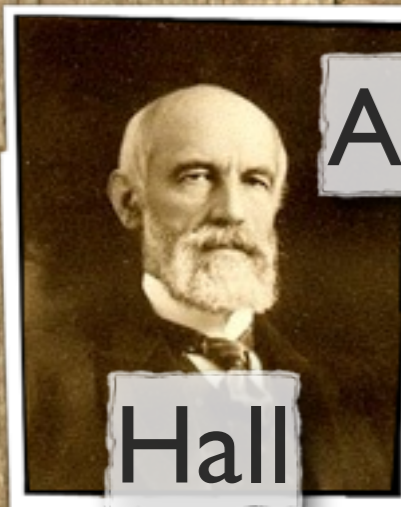
Darwin



Galton



Spencer



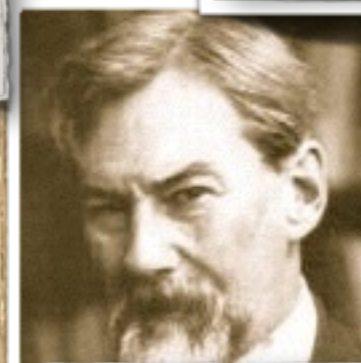
Hall



Schwann



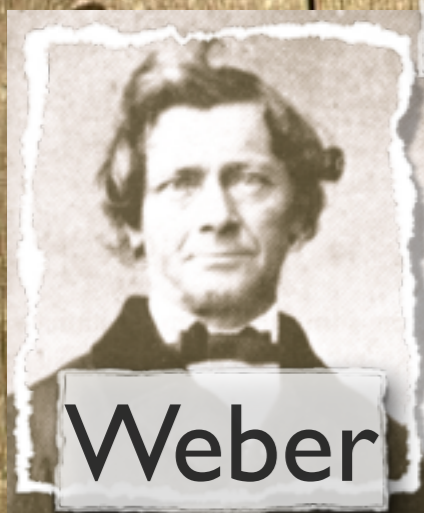
Helmholtz



Claparede



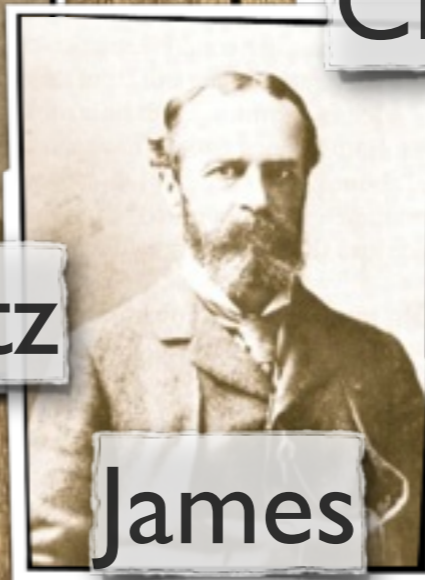
Fechner



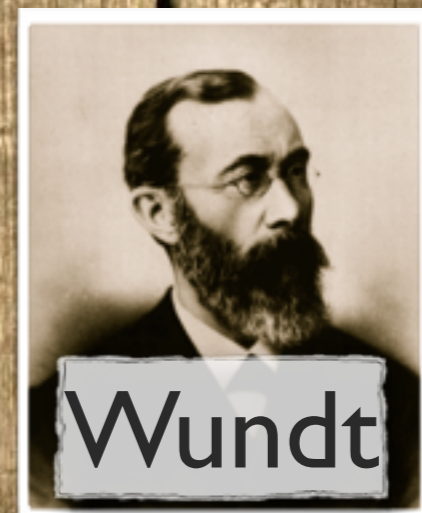
Weber



Pearson



James



Wundt

Wundt, Wilhelm (Maximilian)

Neckarau, Německo

16.08.1832

Großbothen, Německo

31.08.1920

Leipzig 1875 - 1917

Heidelberg 1852-1874

Zurich 1874



www.history-ma.com

Wundt, Wilhelm (Maximilian)

Neckarau, Německo

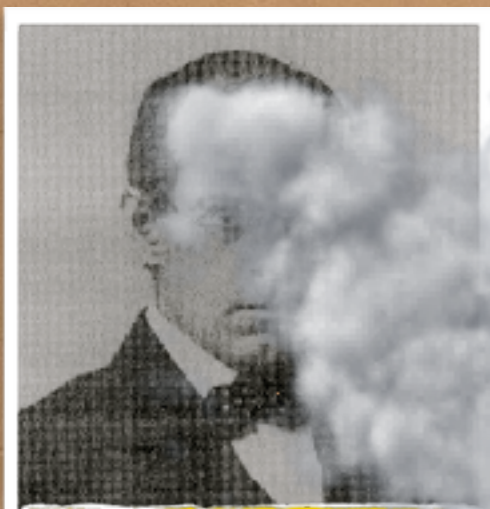
16.08.1832

Großbothen, Německo

31.08.1858



Wenn Sie ebenfalls keine können wollten.
Ich habe mit einer Verbindung, die ich
ihm abgeben werde, und wenn wir bald
nach 4 Uhr im Auditorium unter
möglichst günstigen Umständen
möglichst nicht, die Lieder
nicht gelangt, und
wenn Sie nicht im
Auditorium antreffen, annehmen, dass
sie sind.
Mit besten Grüßen
Ihr W. Wundt.



James McKeen Cattell.



1912

Otto Klemm

Ottmar Dittrich

Friedrich Sander

Wilhelm Wirth



Friedrich Sander (1889-1971)

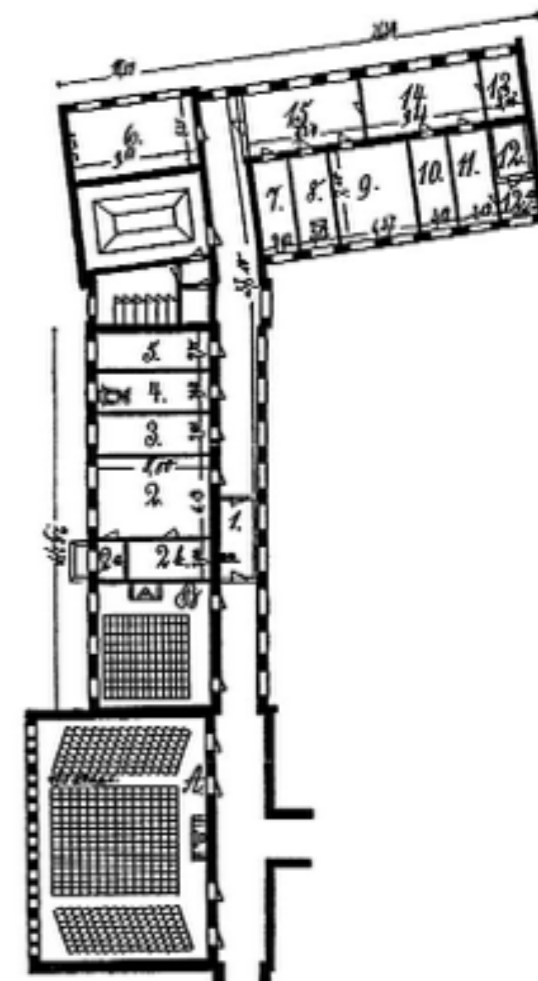
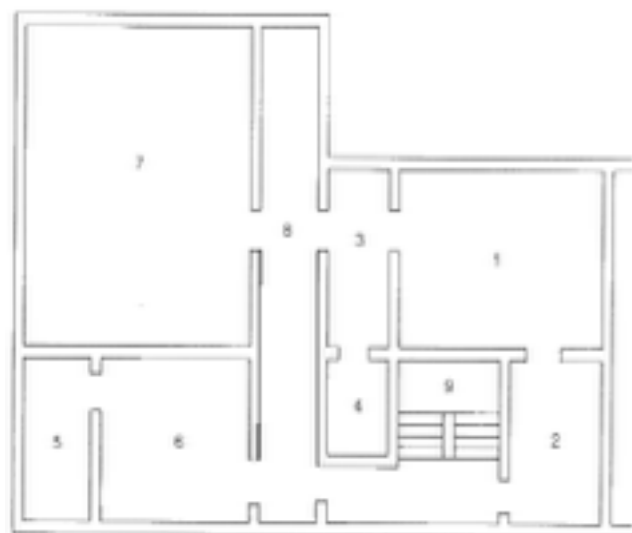
Otto Klemm (1884-1939)

Wilhelm Wirth (1876-1952)

Ottmar Dittrich (1865-?)

Wundtova laboratoř

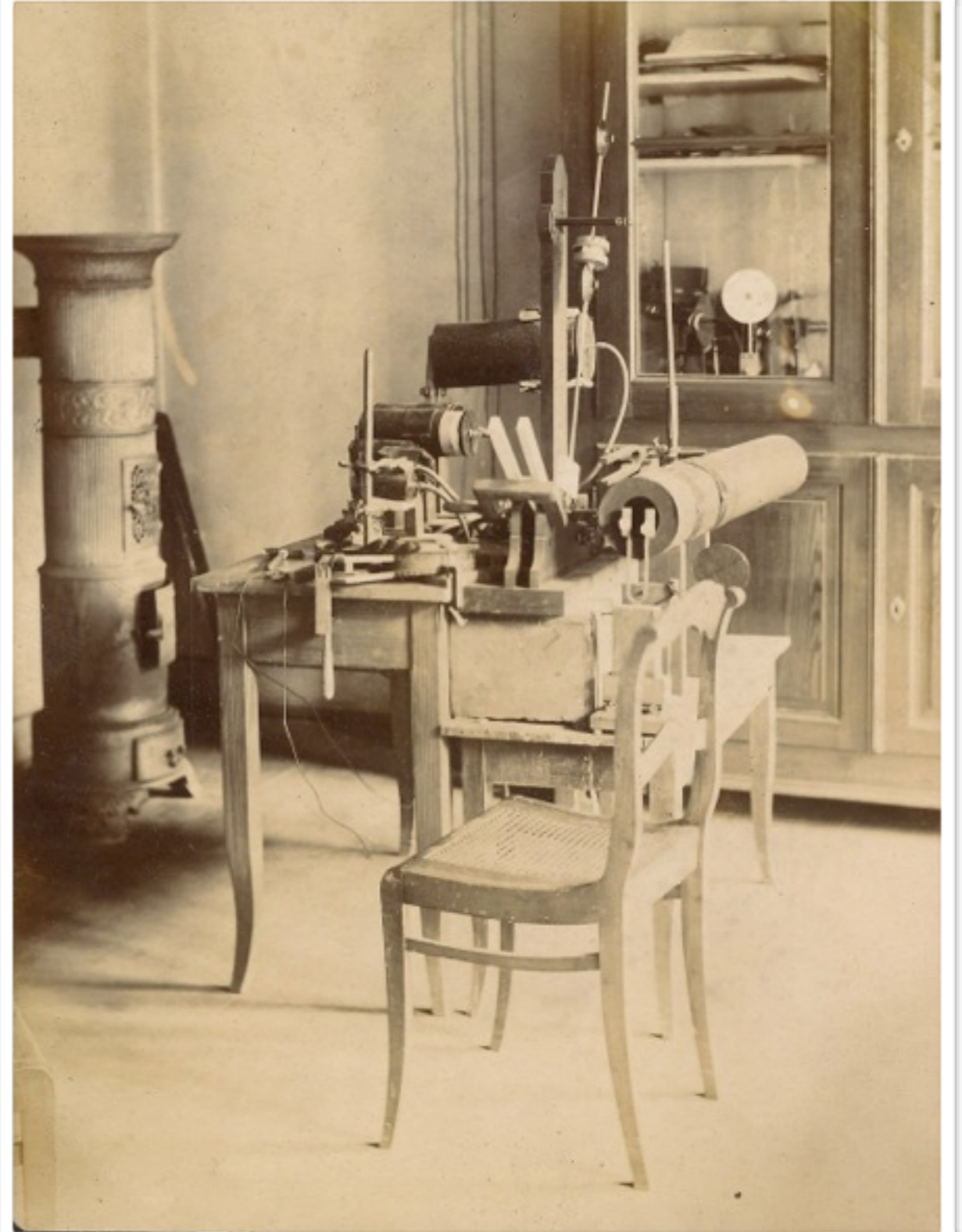
- vznik 1879 (zánik při náletu v r. 1943)

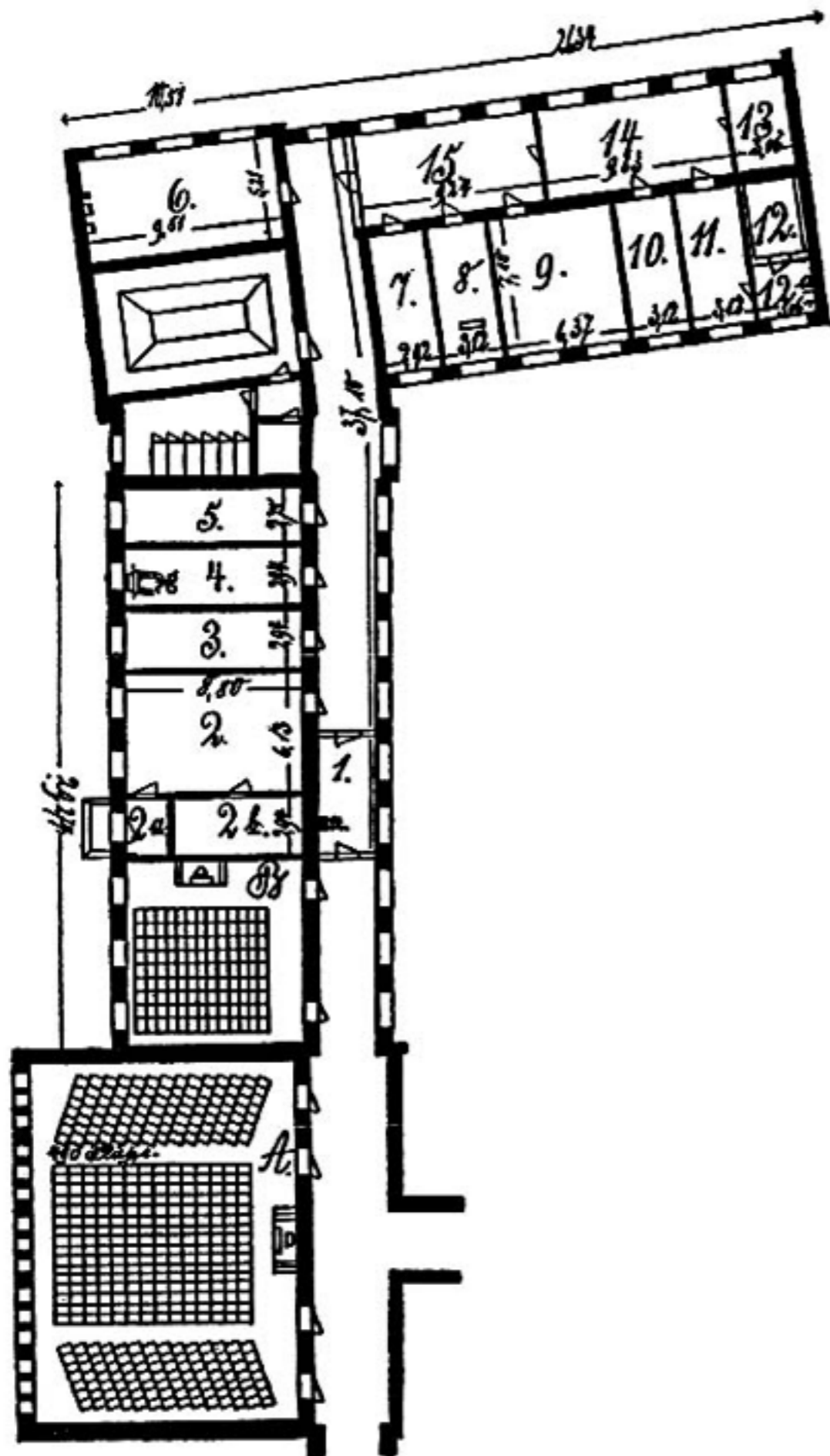


budova Konviktu
(1874 ~1890)

„Hausen
Grimm“
(~1890 - 1896)

Johaneum a
Paulinium
(1896 - 1943)



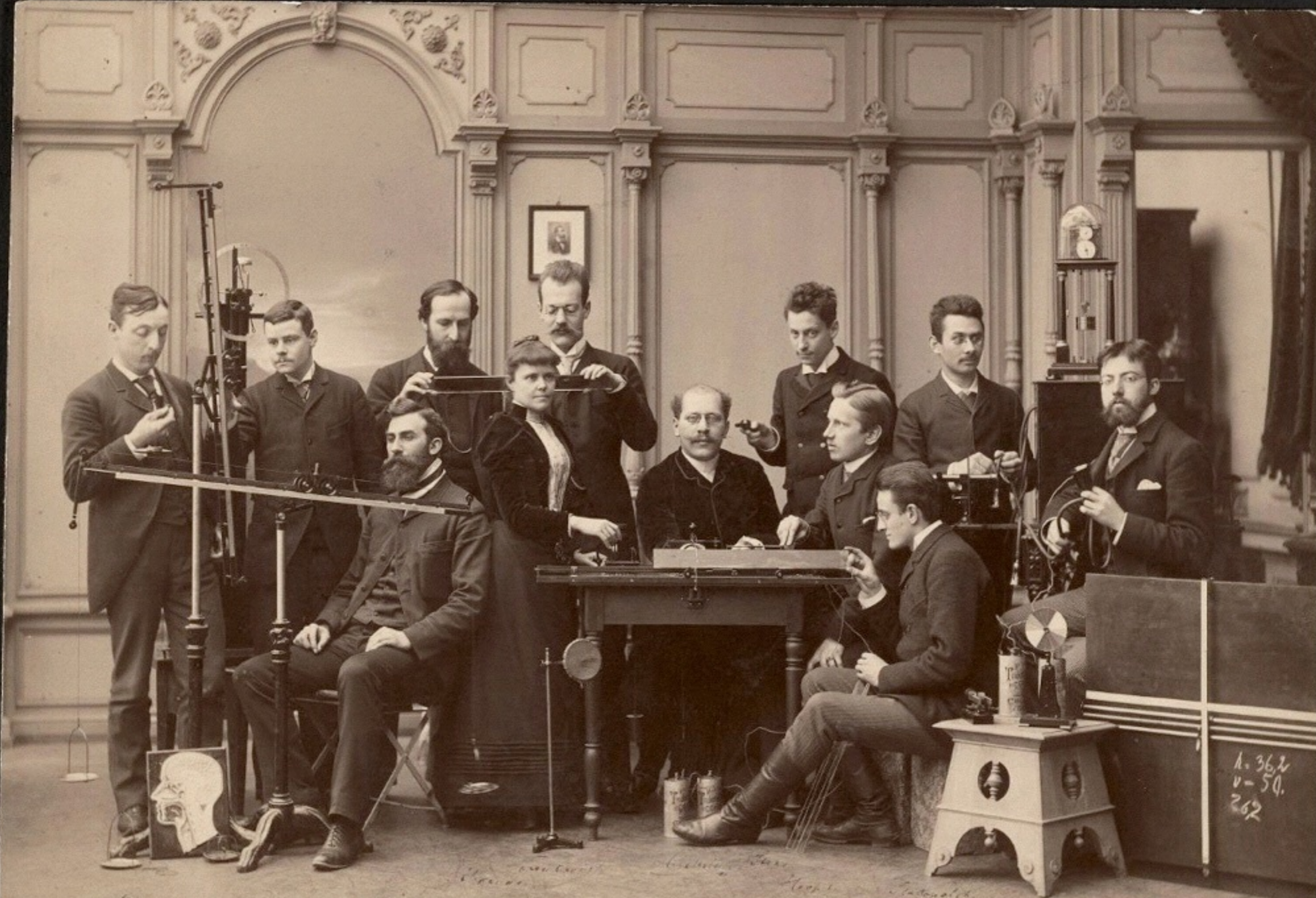


Posluchárna A byla určena pro 500 posluchačů, menší posluchárna B pro 100. Wundtova pracovna je označena číslem 3. Všechny místnosti byly propojeny telefonními kabeľy (dnes bychom takové propojení nazvali datovou sítí).



Leipzig

McK. Cattell 1888: "Wundt v Lipsku stanovil vzor, který následují další univerzity. Psychologické laboratoře byly založeny nebo jsou plánovány v Berlíně, Bonnu, Göttingenu; v Americe na univerzitách: Johns Hopkins, Harvard, Pensylvánie a Princeton; v Anglii v Cambridge; stejně tak v Kodani a dalších centrech.



Münsterbergova Laboratoř ve Freiburgu (1892)

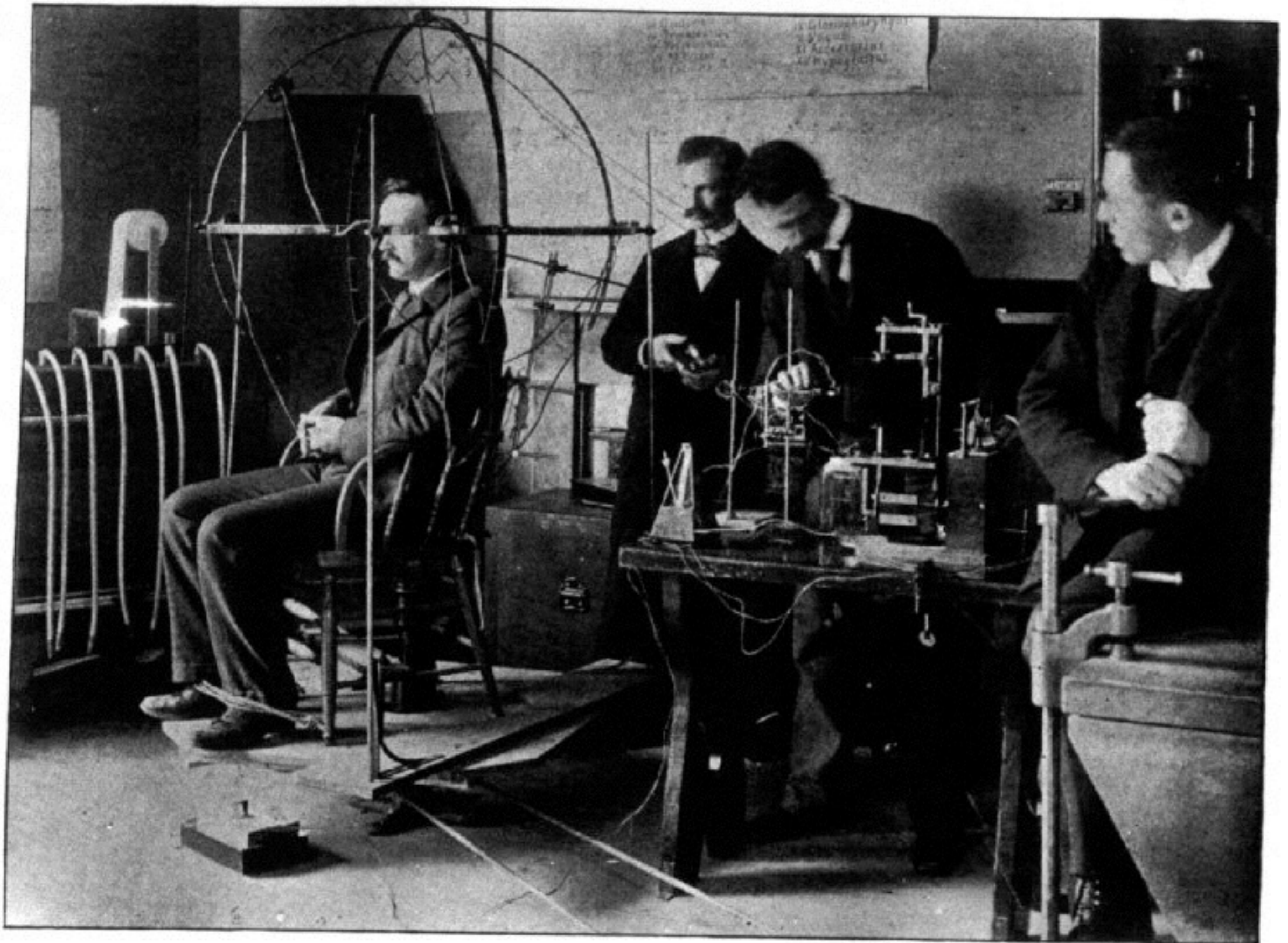
Dr. Prof. James mit verbundenen Händen aus dem Freiburger Laboratorium bei einer Reise von Hugo Münsterberg.



Psychologická laboratoř, Harvard (1892)



Psychologická laboratoř, Harvard (1892)



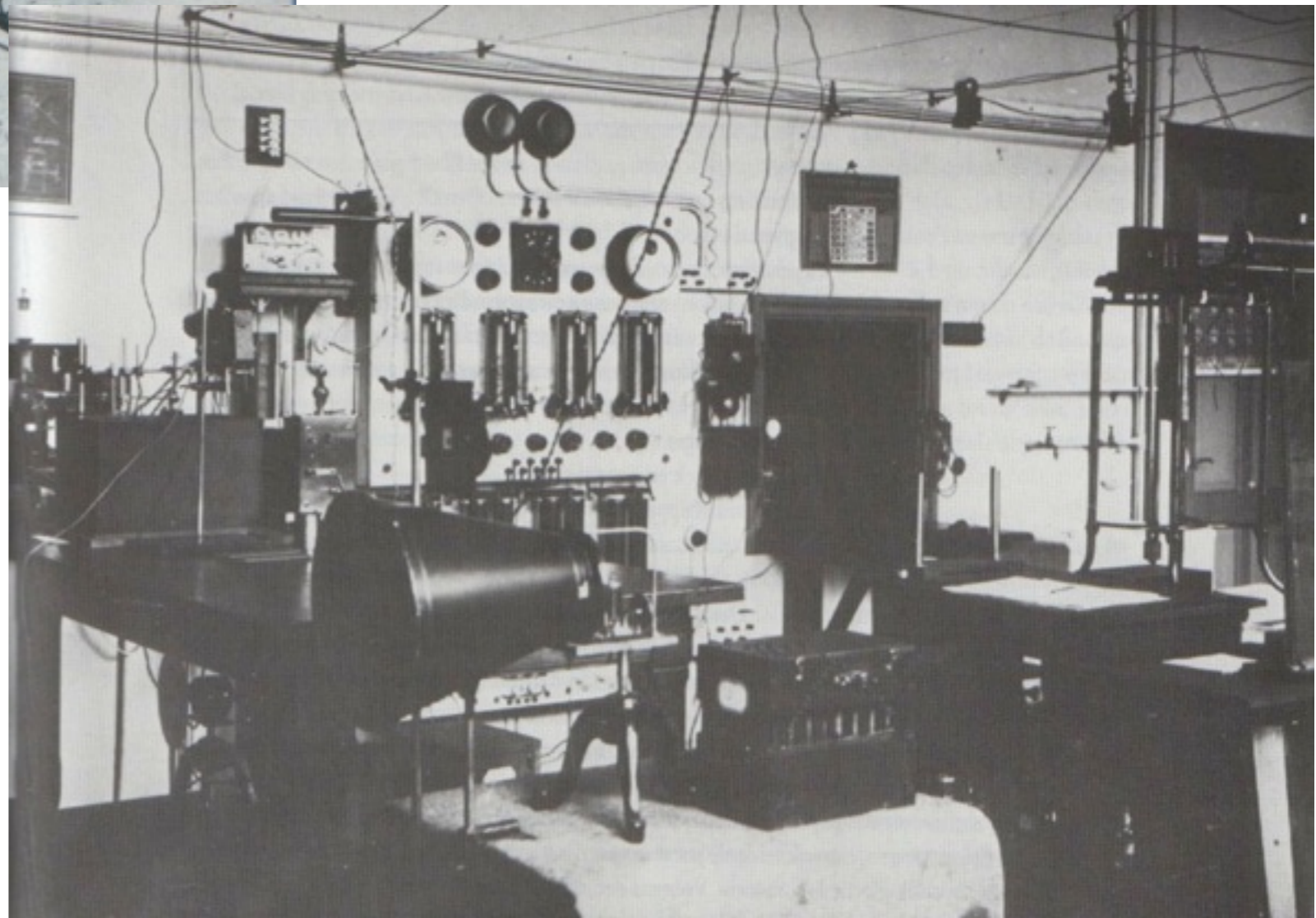
Interior of a Laboratory Room.
([illegible]... of sound.)

Psychologická laboratoř, Harvard (1892)



Groningen 1914

Groningen 1932



Leipzig

Prague, 1912

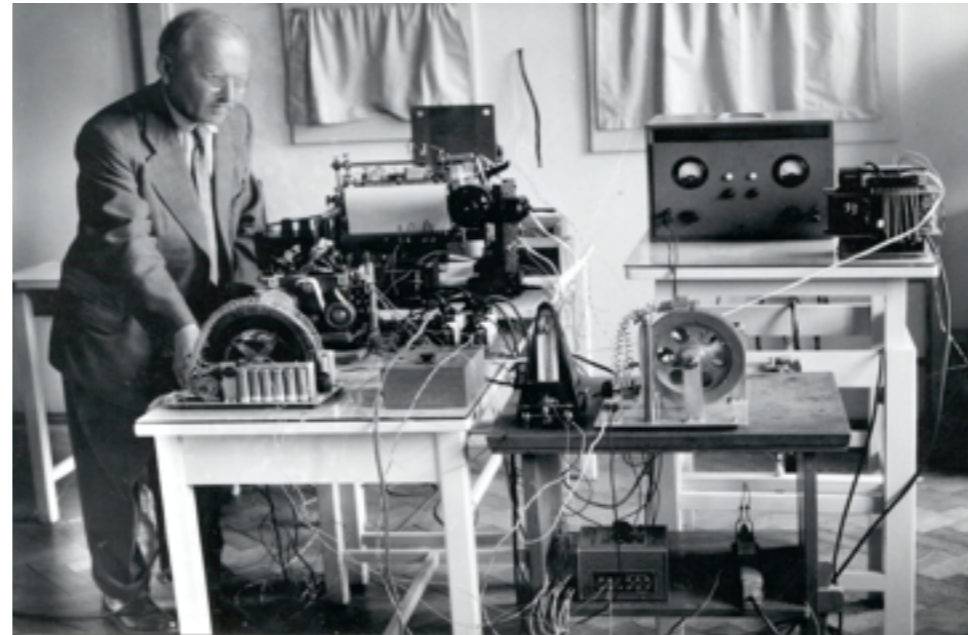
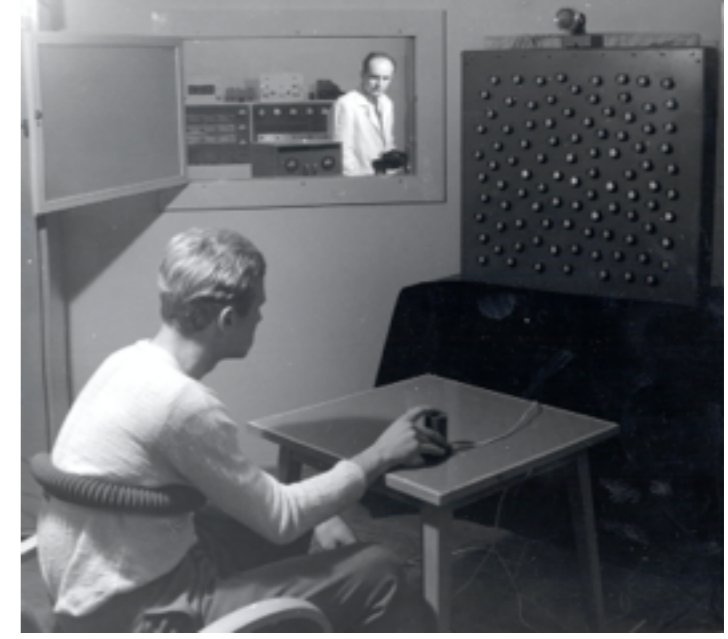
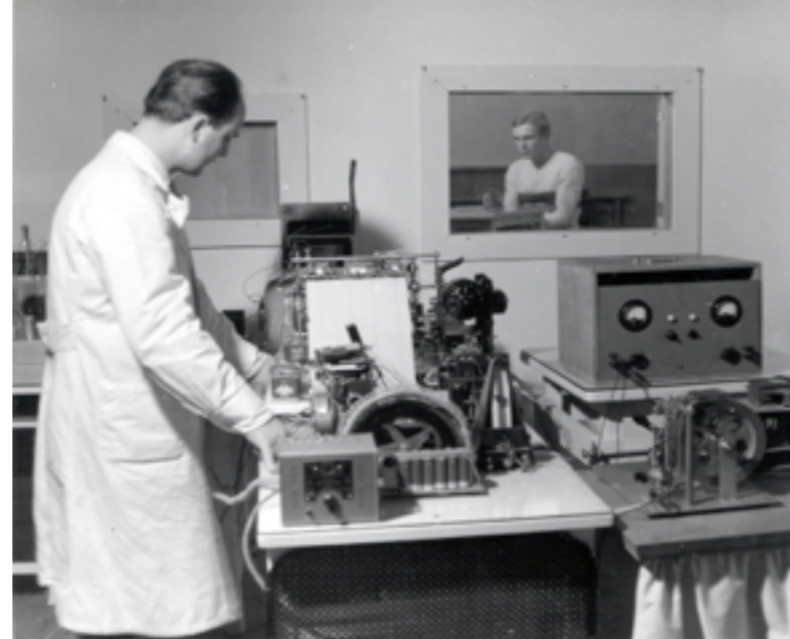
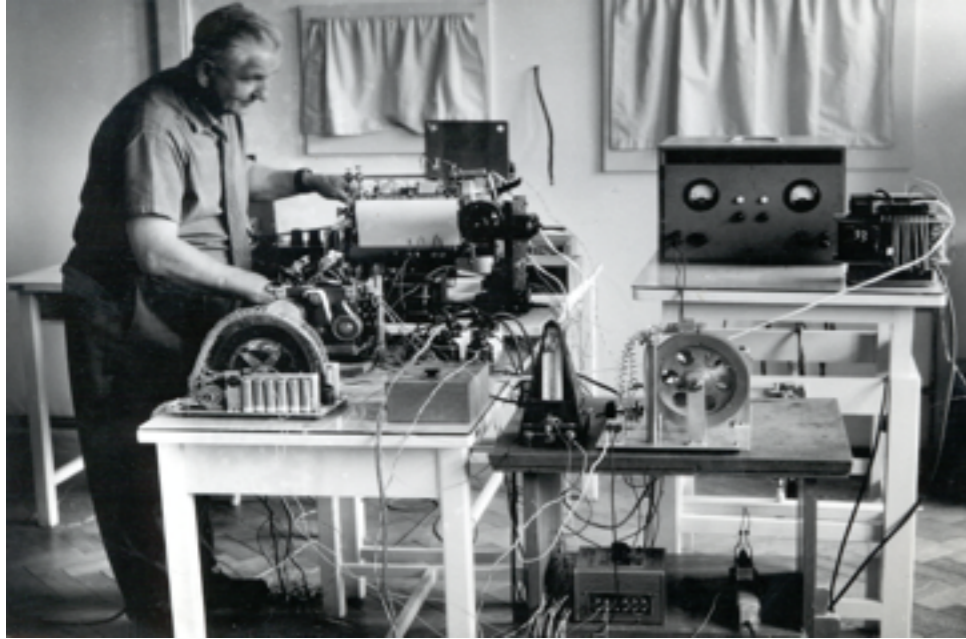
Brno, 1926

- Prof. Rostohar, student Prof. Wundta, založil psychologické laboratoře v Praze, Brně a v Lublani.



Historické laboratoře experimentální psychologie

Ø brněnská psychologická laboratoř
- vznik 1926





Frankfurt

Max Wertheimer
1880 - 1943

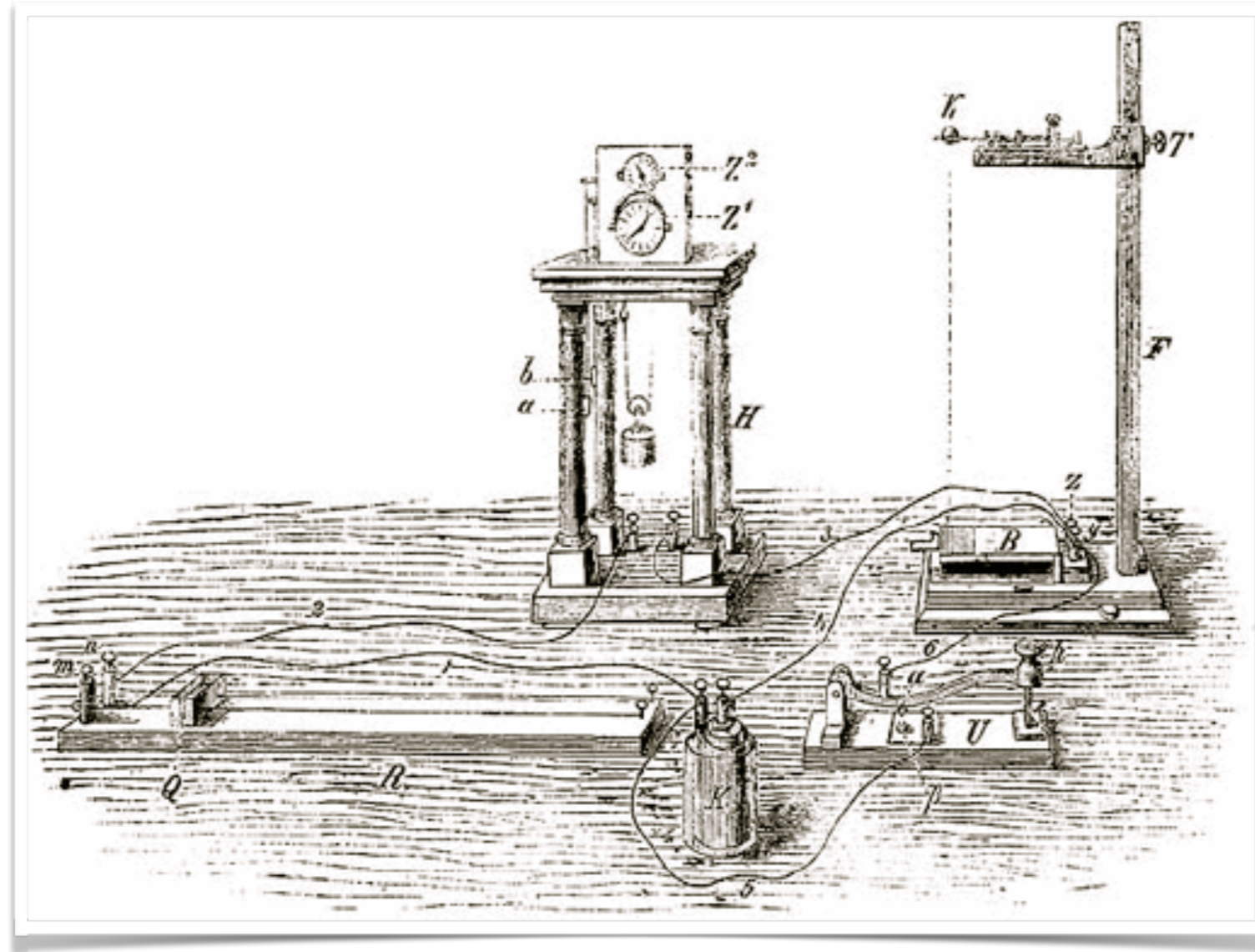


W. Köhler K. Koffka



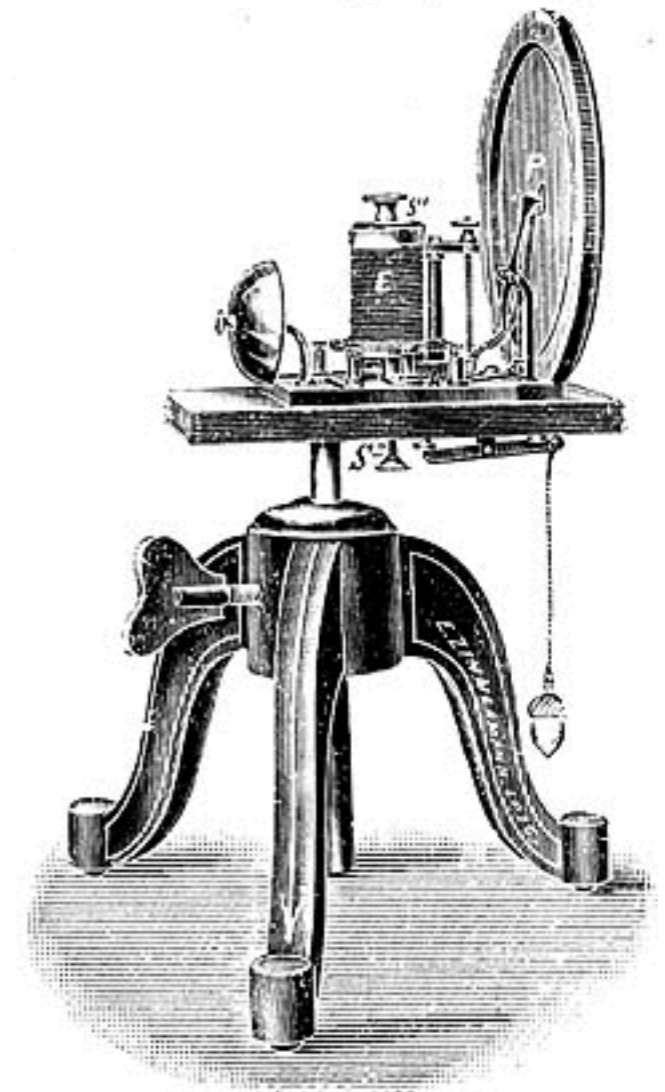
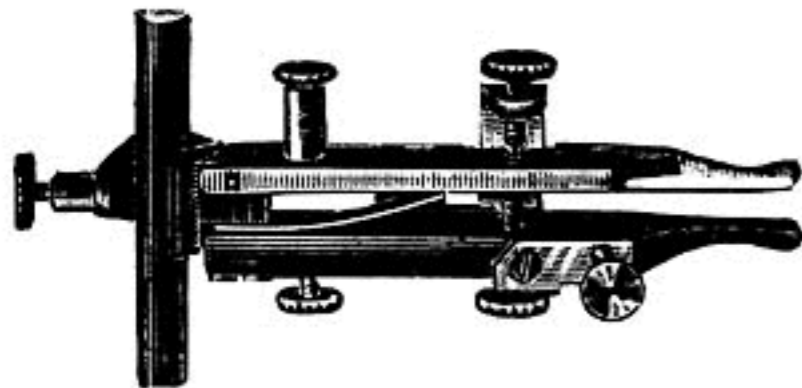
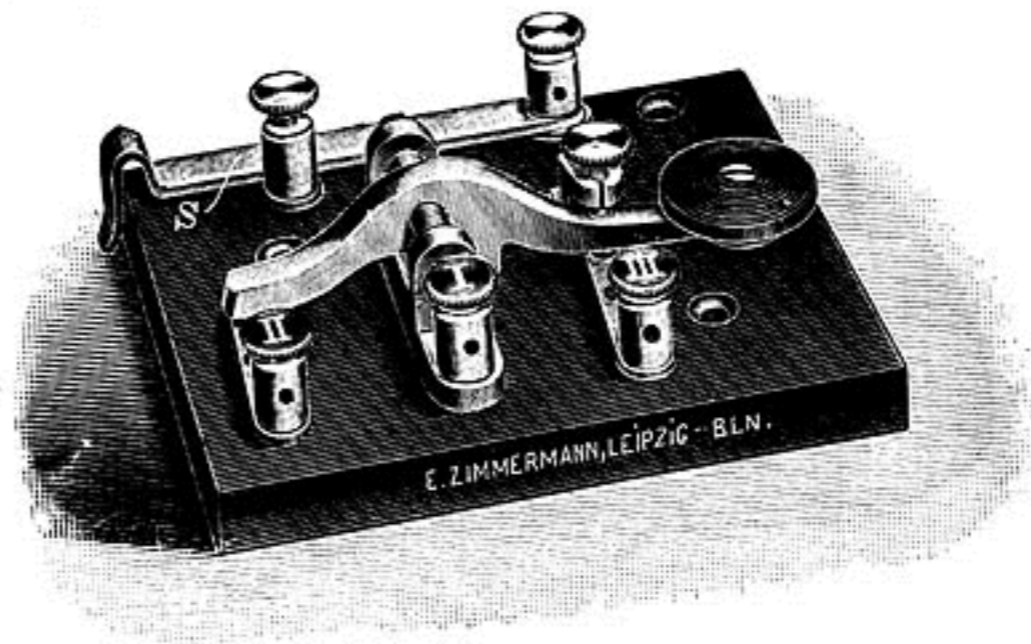
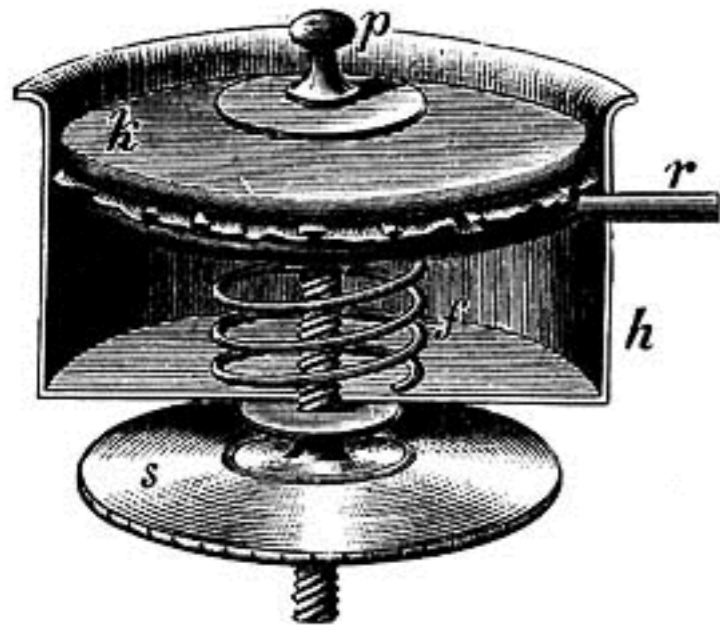
První experimenty: prosinec 1879

První studenti: G. Stanley Hall a Max Friedrich



Max Friedrich disertační práce “Über die Apperceptionsdauer bei zusammengesetzten Vorstellungen” (O trvání apercepce u kombinovanych představ) (Meischner-Metge, 2003)

„Od grafické autoregistrace zvukovým klíčem Roemerovým ve spojení s elektromagnetickým značkovačem a chronografem Jaquetovým bylo upuštěno ...“ (Chmelař, 1935 str. 32).



E. ZIMMERMANN

Apparate für Psychologie, Pädagogik, Physiologie, Psychotechnik, Mikrotome
Apparatus for Psychology, Pedagogy, Physiology, Psychotechnica, Microtomes
Appareils pour Psychologie, Pédagogie, Physiologie, Psychotechnique, Microtomes
Aparatos de Psicologia, Pedagogia, Fisiologia, Psicotécnica, Micrótomos

Copyright 1927 - Established 1827 - Sole Importers in 1927 - Case Institute 1927

LEIPZIG O 27 BERLIN NW 6

Wasserturstraße 33 Kottbuscher Str.
Listes free!
Liste forwarded free of charge
Listes spéciales sont reçues sur demande / Listas a pedido



No. 176
Goldhammer with measuring all dials
Psychological apparatus with dials
Psychological apparatus with dials
Psychological apparatus with dials



No. 180
Rotating Test-Apparatus
Psychological apparatus with dials
Psychological apparatus with dials



No. 181
Psychological apparatus with dials
Psychological apparatus with dials



No. 182
Psychological apparatus with dials
Psychological apparatus with dials



No. 183
Psychological apparatus with dials
Psychological apparatus with dials



No. 175
Psychological apparatus with dials
Psychological apparatus with dials



No. 178
Psychological apparatus with dials
Psychological apparatus with dials



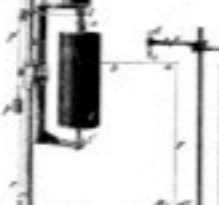
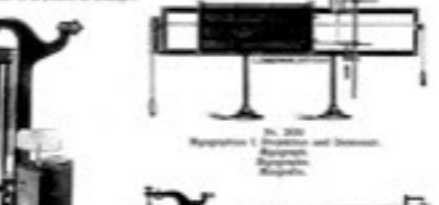
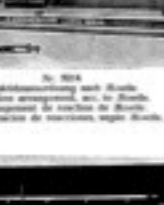
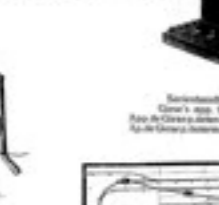
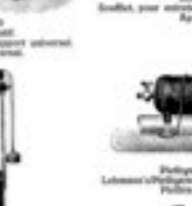
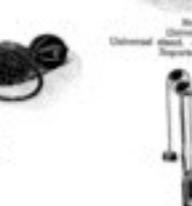
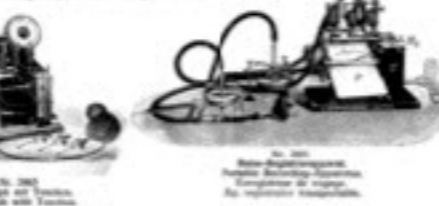
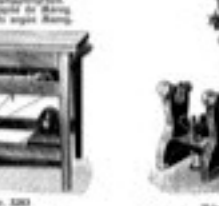
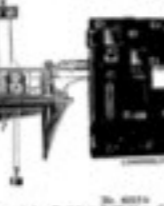
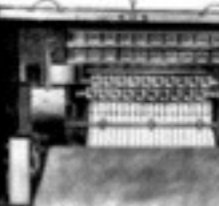
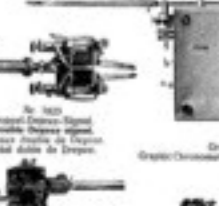
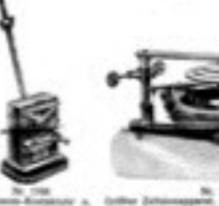
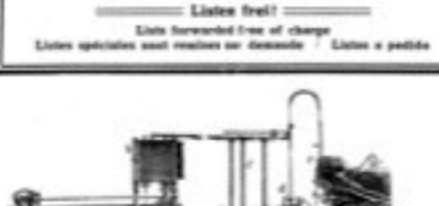
No. 179
Psychological apparatus with dials
Psychological apparatus with dials



No. 184
Psychological apparatus with dials
Psychological apparatus with dials



No. 185
Psychological apparatus with dials
Psychological apparatus with dials



Pražská kolekce



založeno 1912

obsahuje 70 přístrojů

časové období:
~ 1895-1930



Ophthalmoscope (Model of the muscles of the eye)

Brněnská kolekce



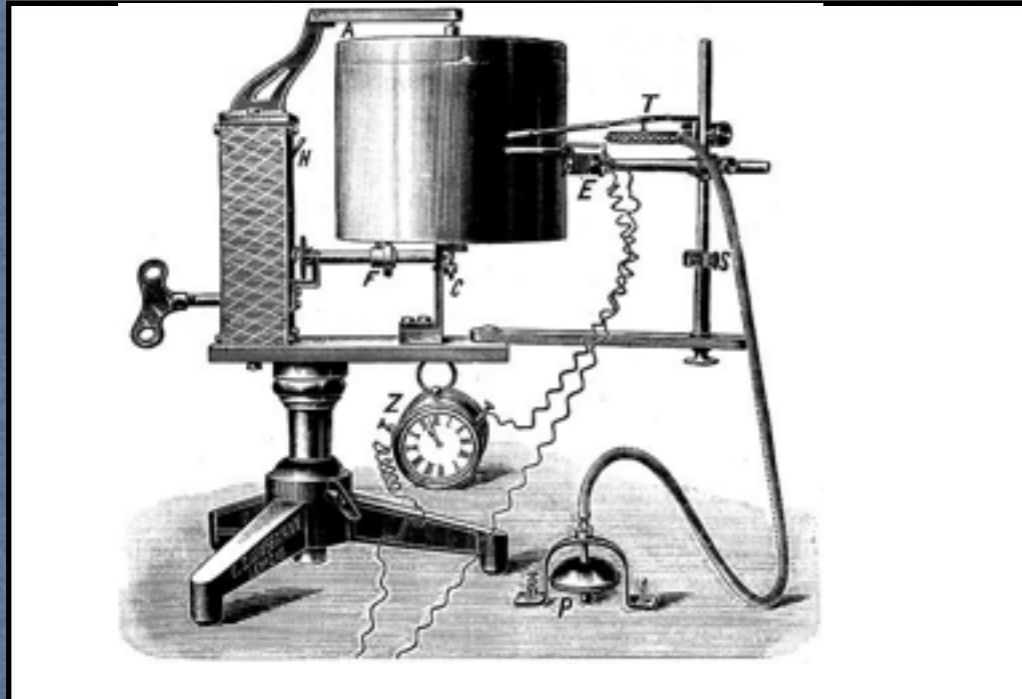
založeno 1926

obsahuje 75 přístrojů

časové období:
~ 1895-1930



finanční náročnost vybavení



375 M

=



Preis des Gesamt-Apparates: Optischer Apparat, Metronom,

Taster mit Schalter, Leitungen	Mk. 160.—
Akkumulator mit 2 Zellen	„ 56.—
3 Cupron-Elemente	„ 18.—
23 Reizkarten nach Ranschburg zur Untersuchung der Auffassung, Association und des Gedächtnisses	ca. „ 25.—
50 unbedruckte Reizkarten zur Selbstanfertigung	„ 7.50

Für psychophysische Zeitmessungen können geliefert werden:

Chronoskop nach Hipp	„ 310.—
Rheochord	„ 22.—
Kontrollapparate	Mk. 60.— bis „ 325.—
Wippe	„ 10.—
Reaktions-Taster	Mk. 15.— bis „ 35.—
Akustischer Reiz- und Reaktionsapparat, sogen. Schallschlüssel nach Römer	„ 80.—

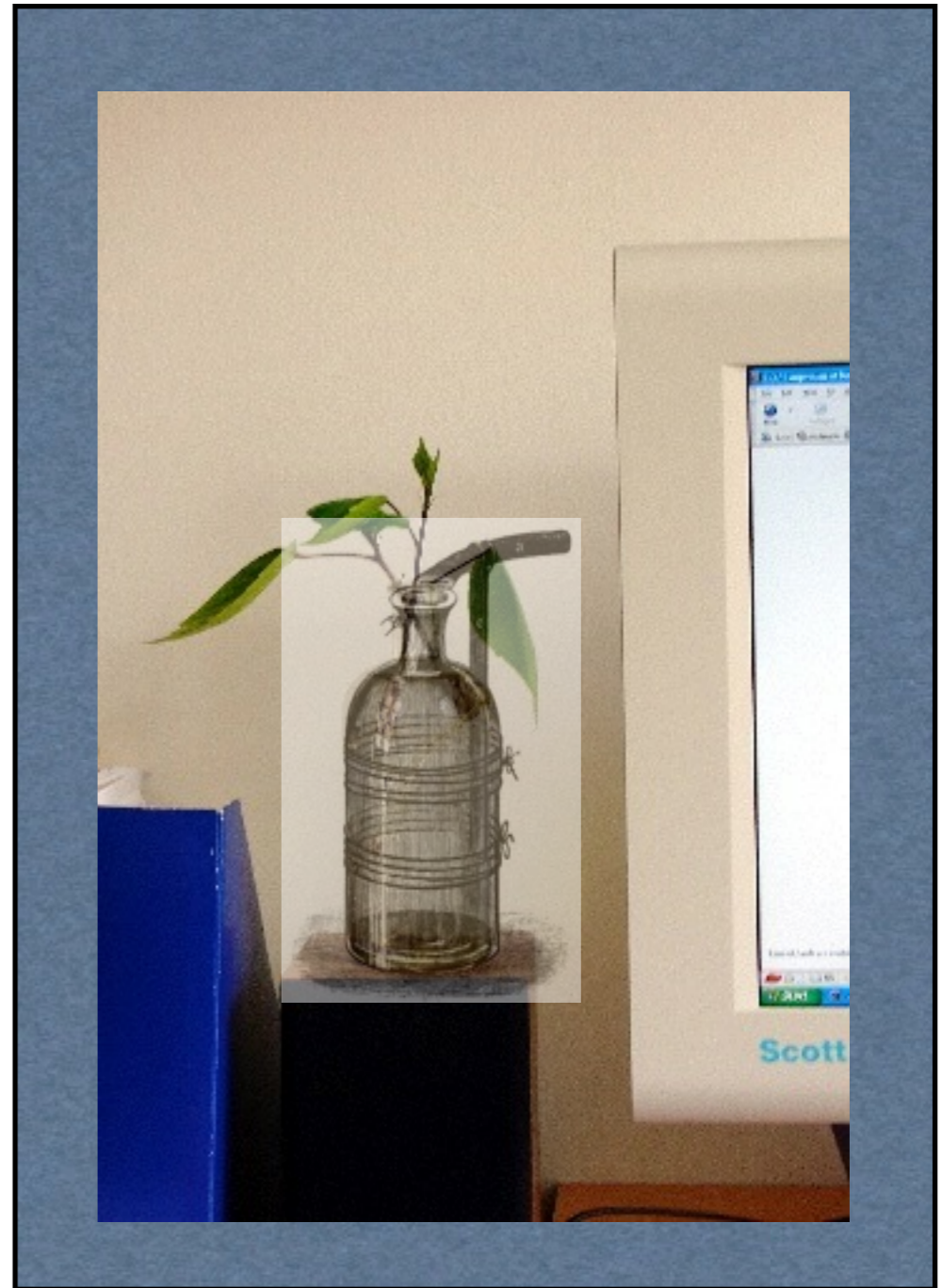
1049 M

=





Univerzální kymograf



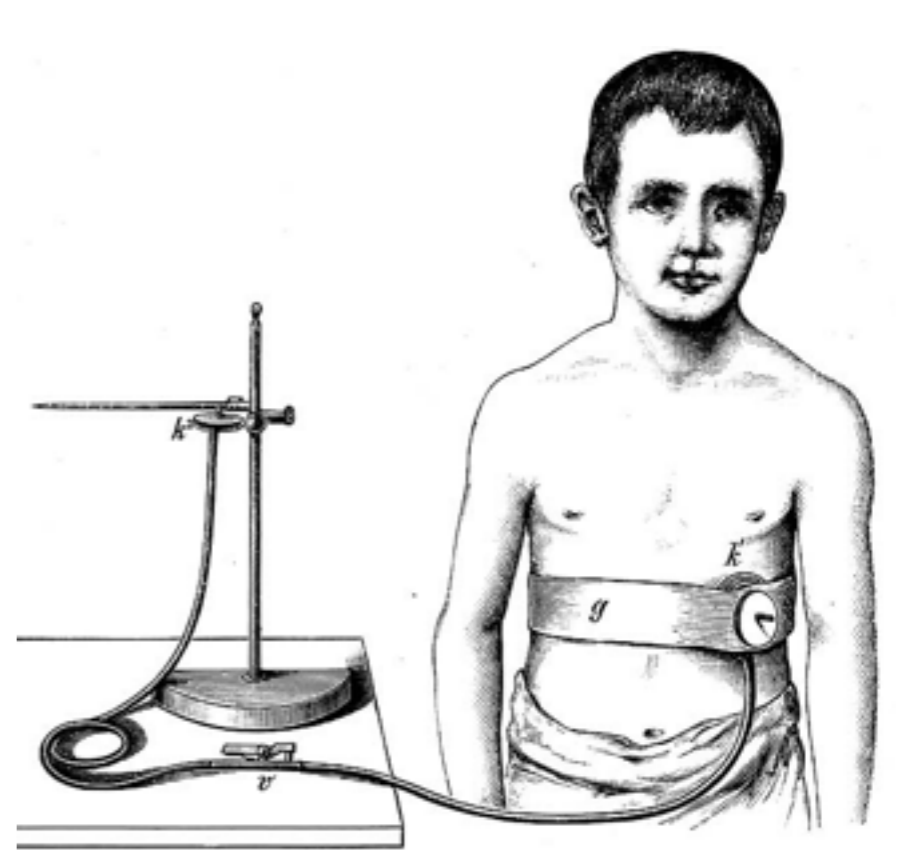
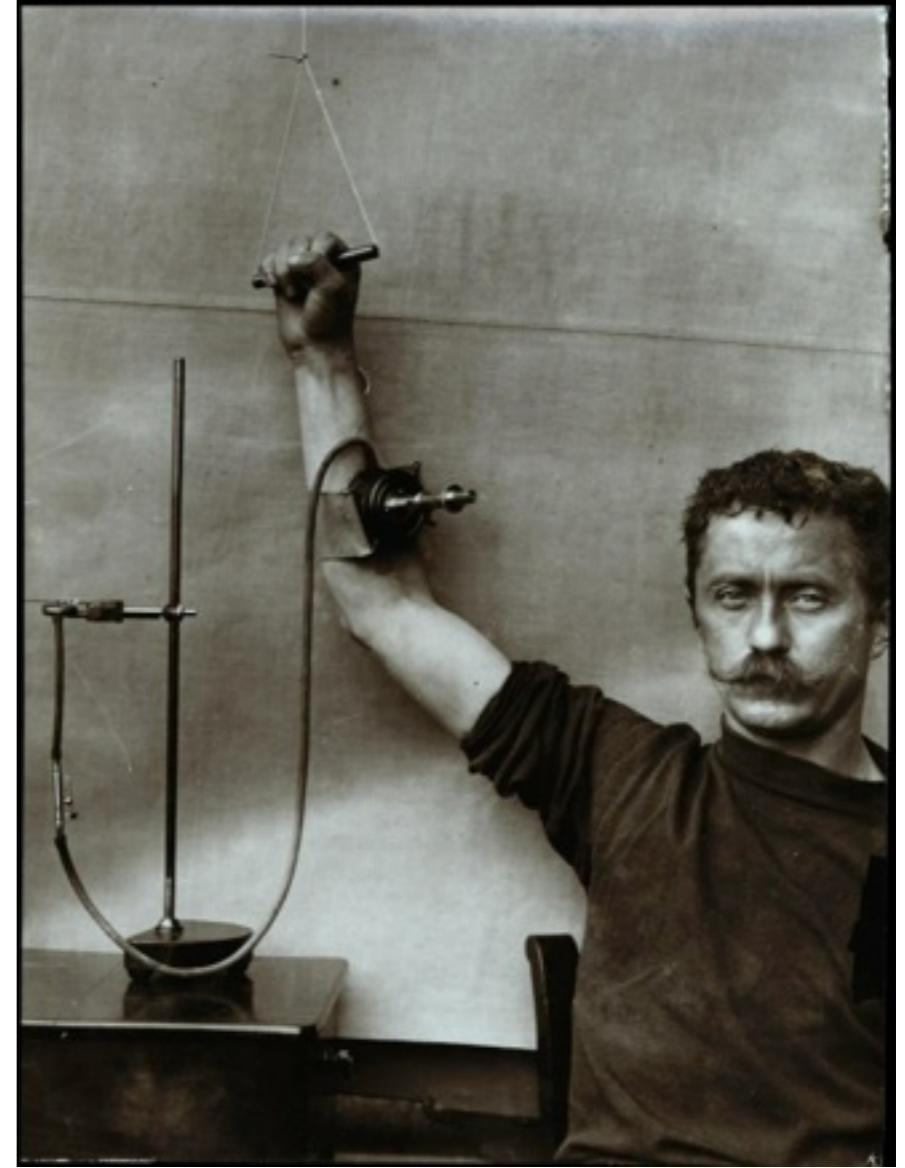
Lahvové varhany

Vodítka:

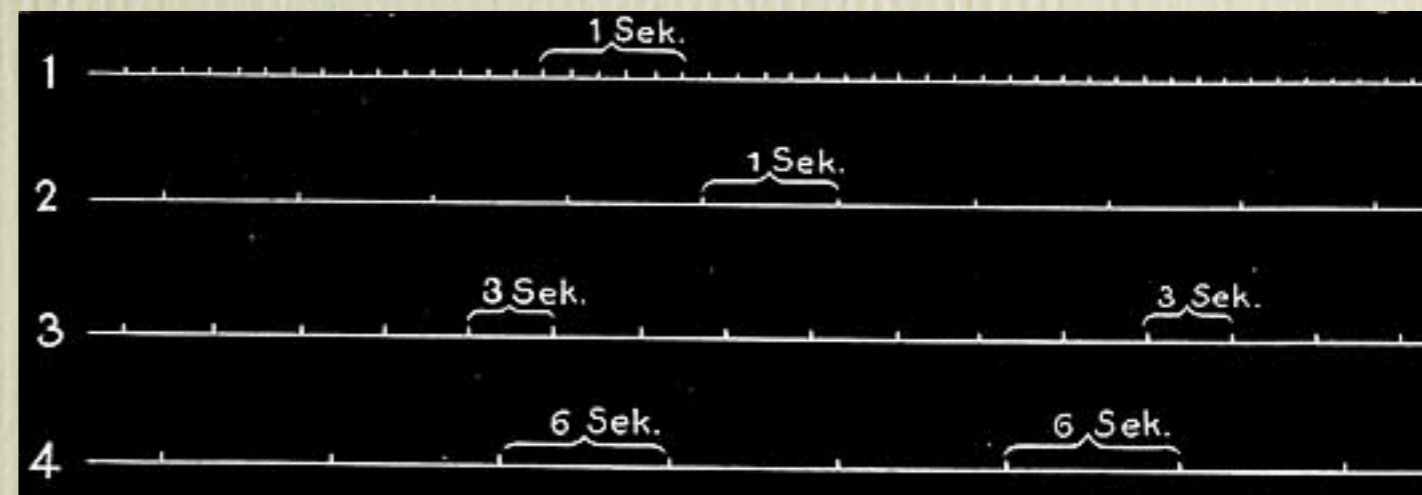
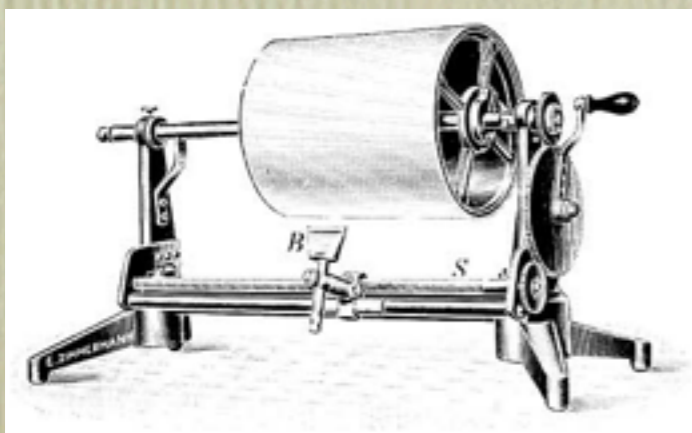
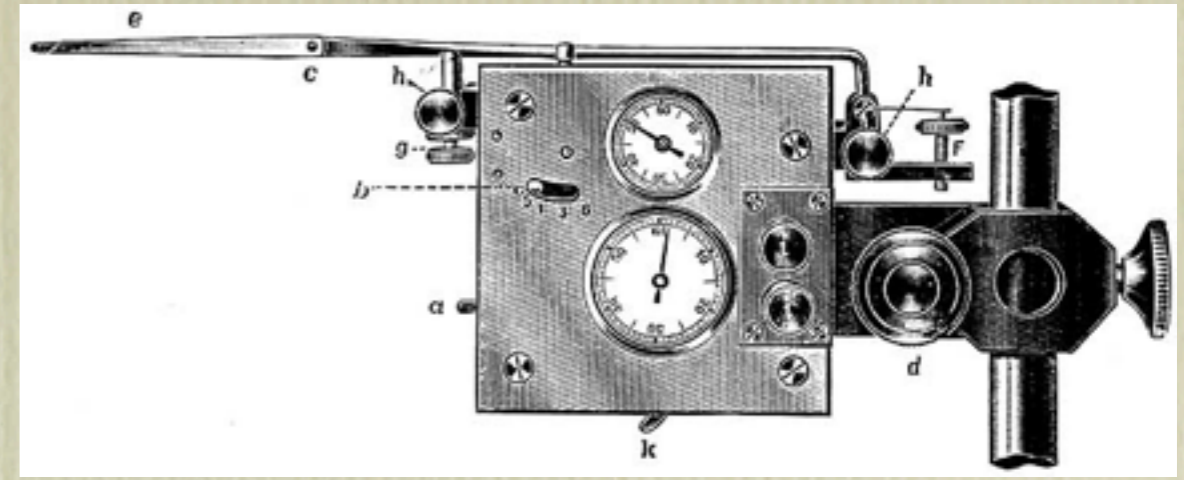
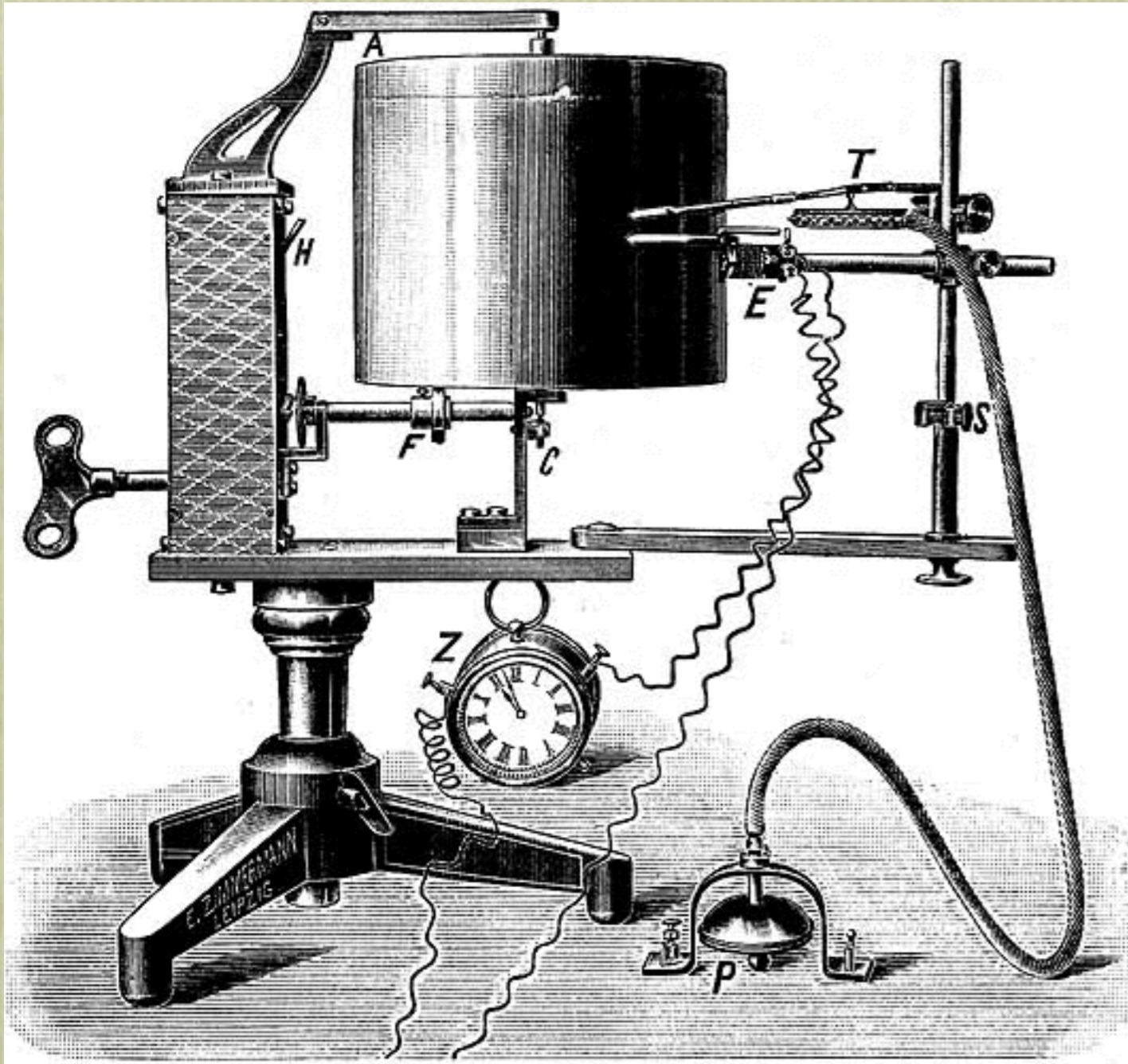
- ⇒ štítky s rozdílným dekorem “Zimmermannova” loga
- ⇒ font užitý pro popis jednotlivých částí přístroje (stupnice, etc.)
- ⇒ výrobní detaily (dekorace, materiál, etc.)

Jednotlivé “time-points”:

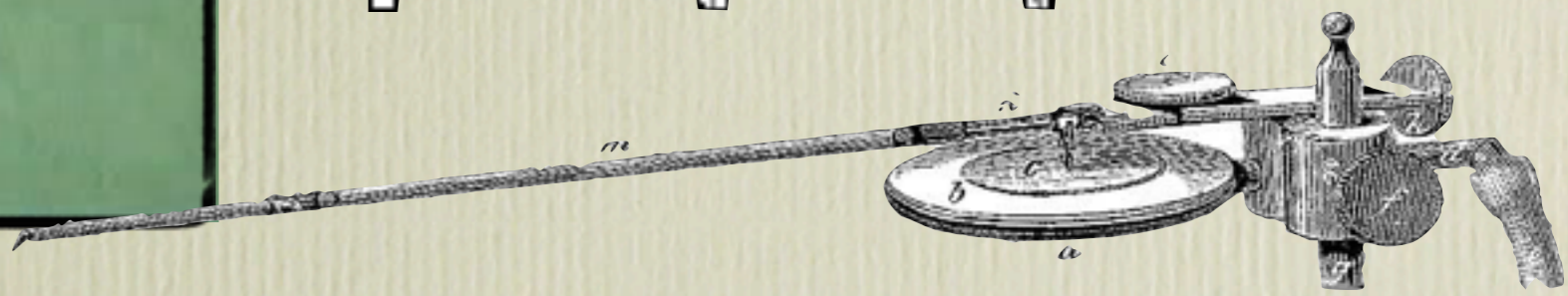
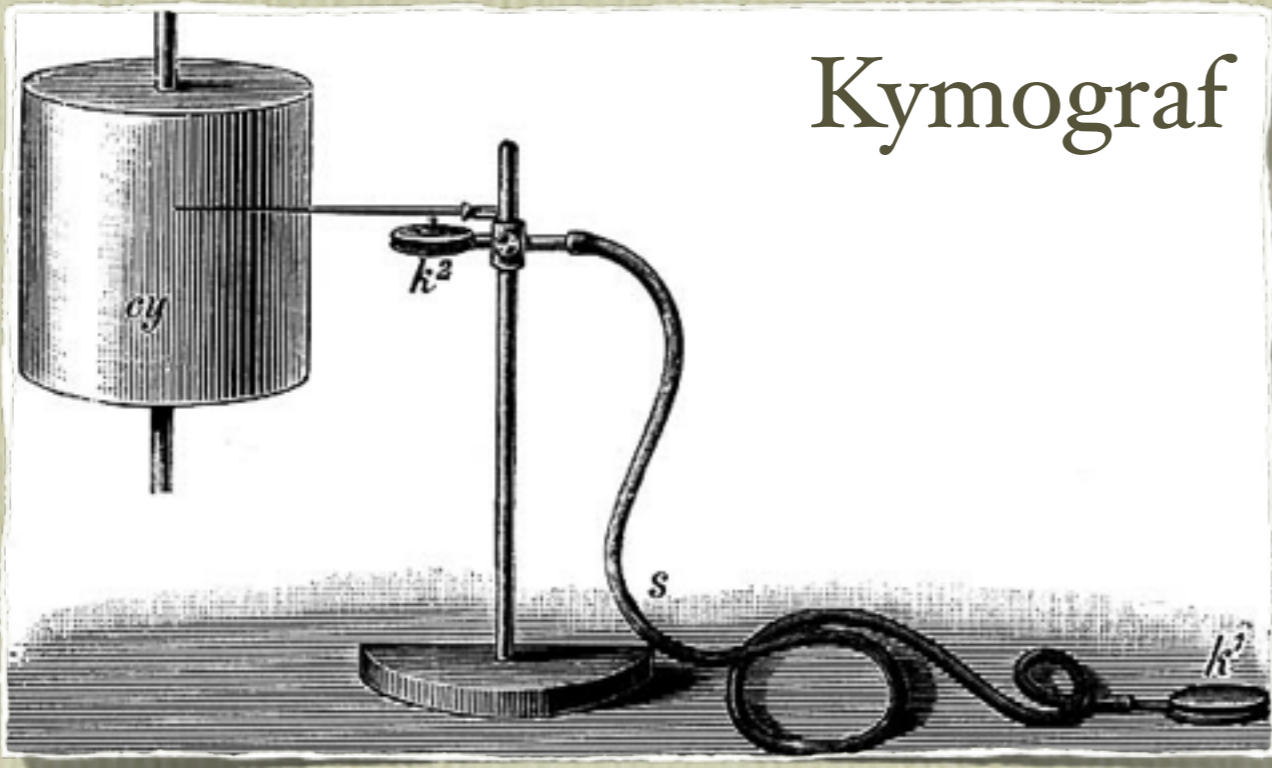
1894	Emilienstrasse 21, Leipzig		
1905	Emilien-Strasse 21, Leipzig		
1912	Emilienstr. 21, Leipzig	Chausseestr. 6, Berlin N4	
1921	Roscher-Straße 23, Leipzig	Charité-straße 9, Berlin	
1922	Wasserturmstraße. 33, Leipzig	Charitéstraße 9, Berlin	
1928	Wasserturmstraße. 33, Leipzig	Karlstraße 5a, Berlin	



Kymograf



Kymograf



problematika přípravy záznamového zařízení:

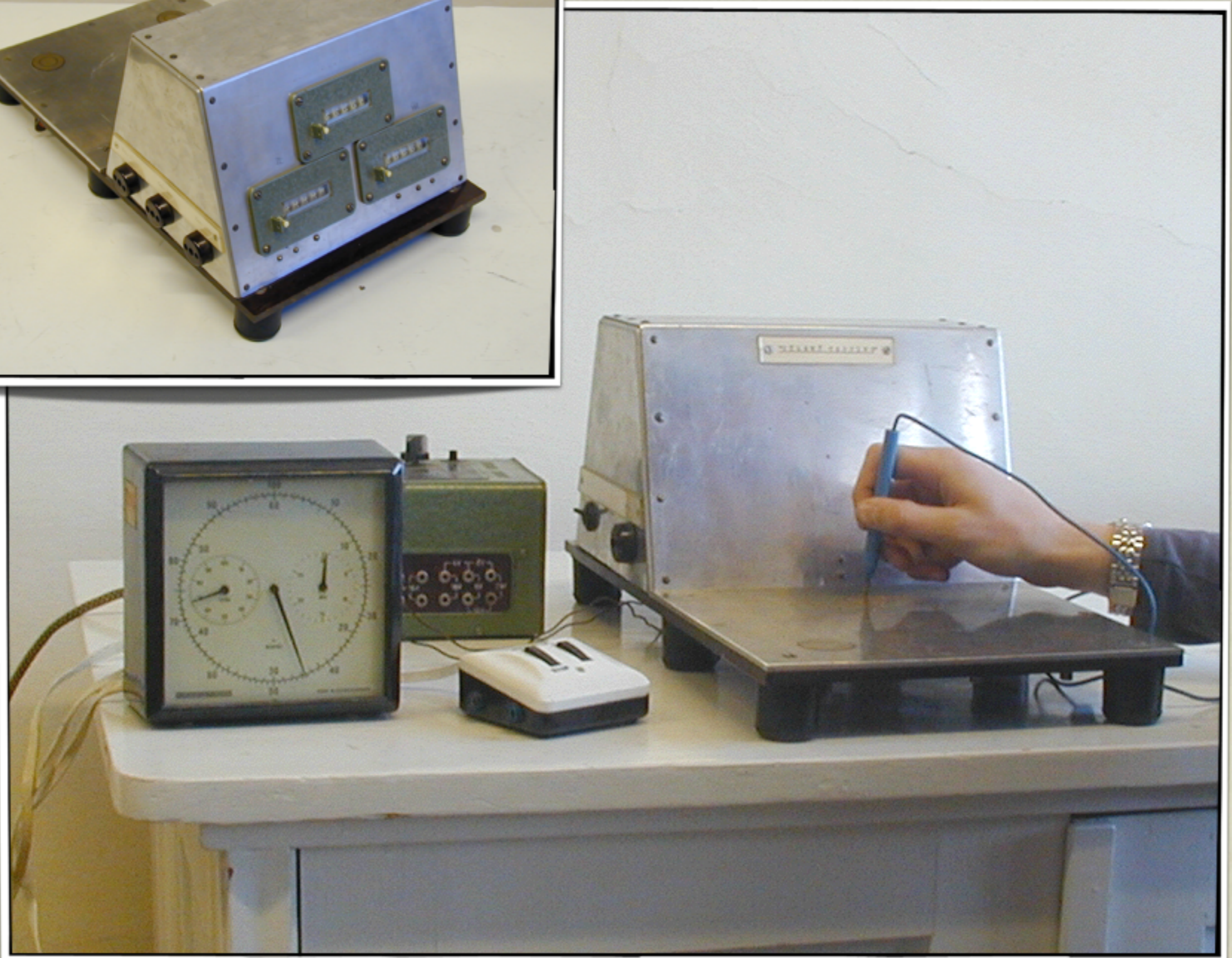
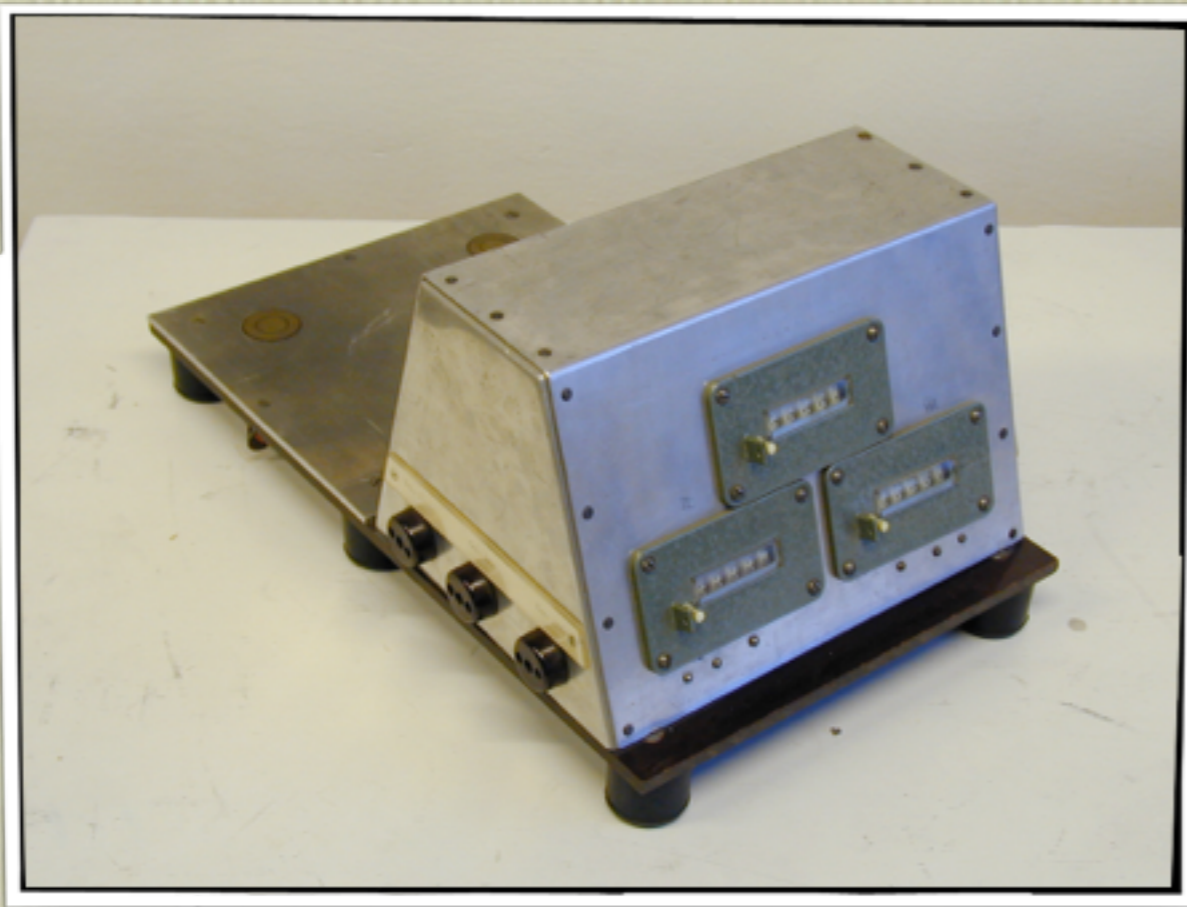
Ø čas potřebný k získání údajů při použití kymografu

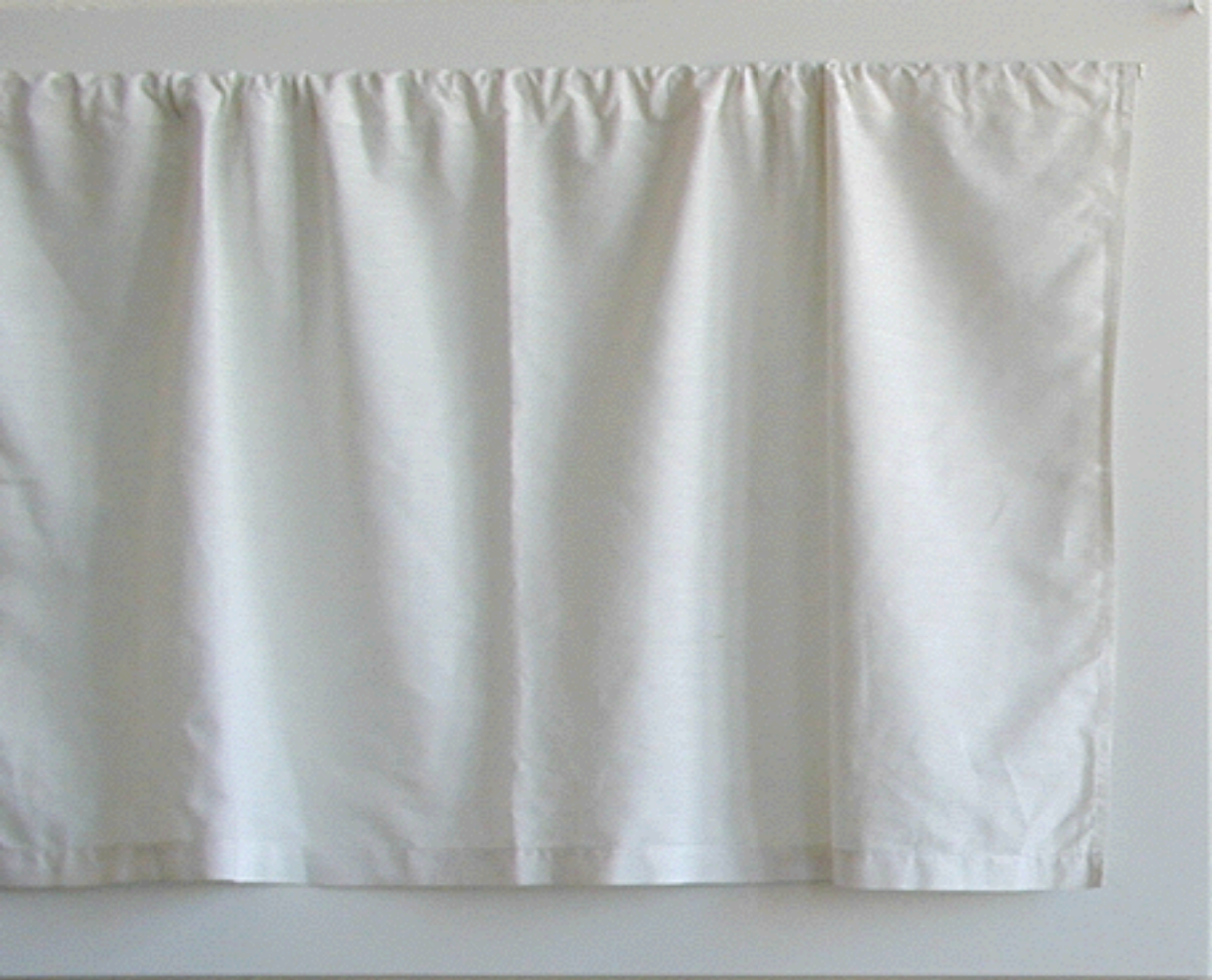
- příprava kymografu - 25 minut
- záznam experimentu - 2 minuty
- fixace záznamu lakem a jeho zaschnutí - 6 hodin
- získání údajů ze záznamu - 13 minut

Ø čas potřebný k získání údajů při použití PC a tabletu

- záznam experimentu - 2 minuty
- získání dat ze záznamu - 13 vteřin



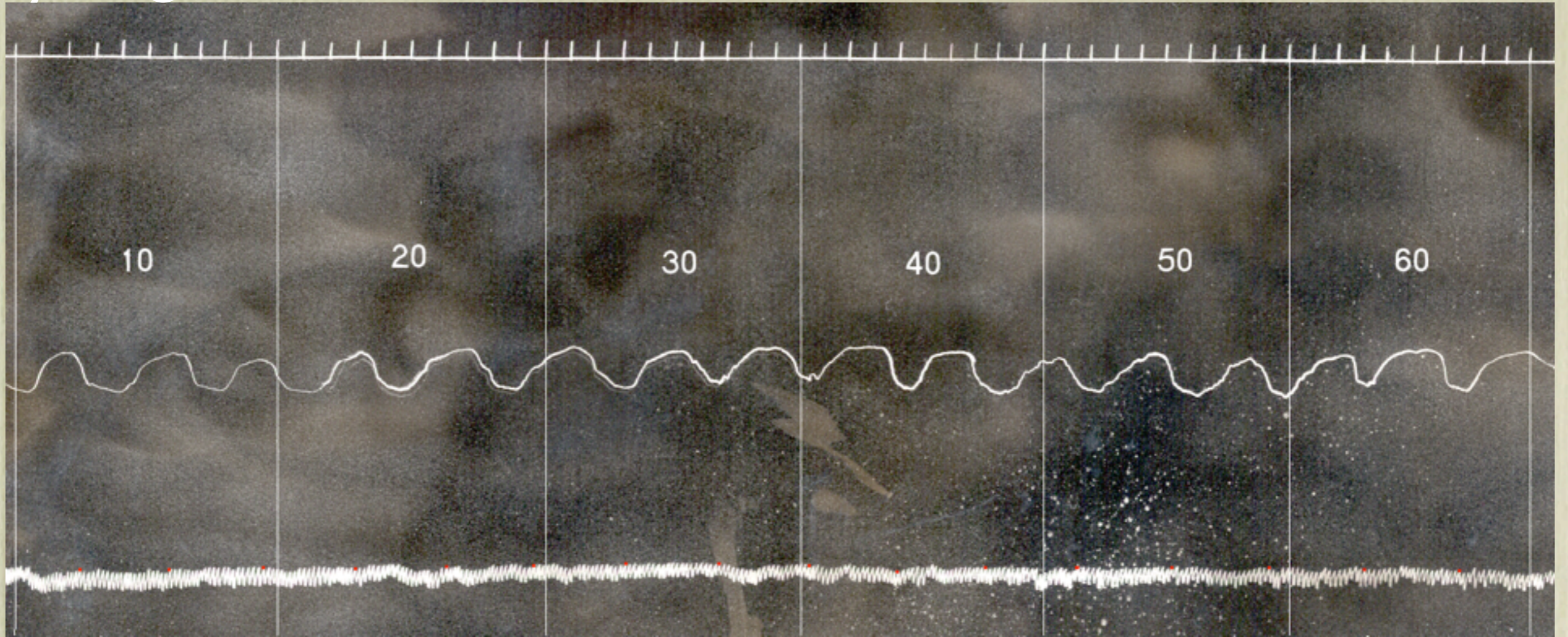




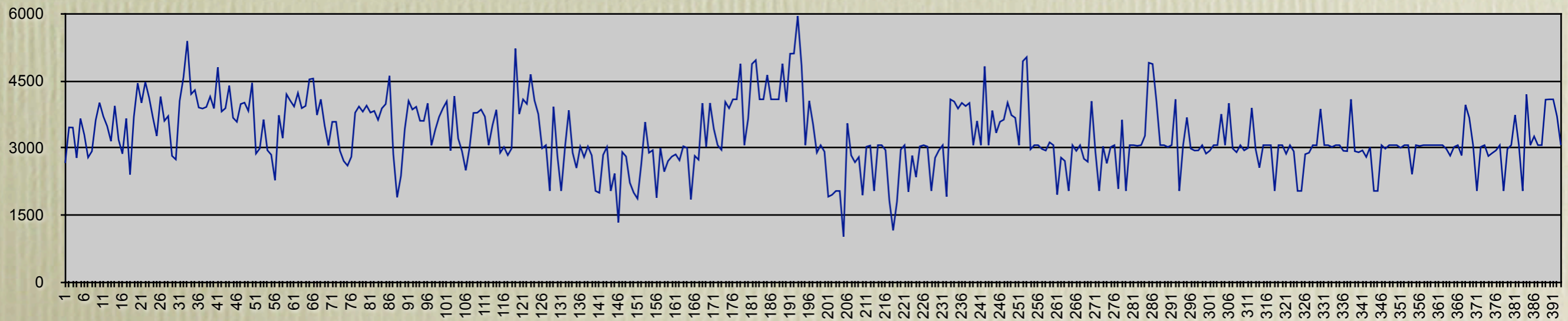
31.0 064
CAS TREMOMETER
TREMOMETR TR 78



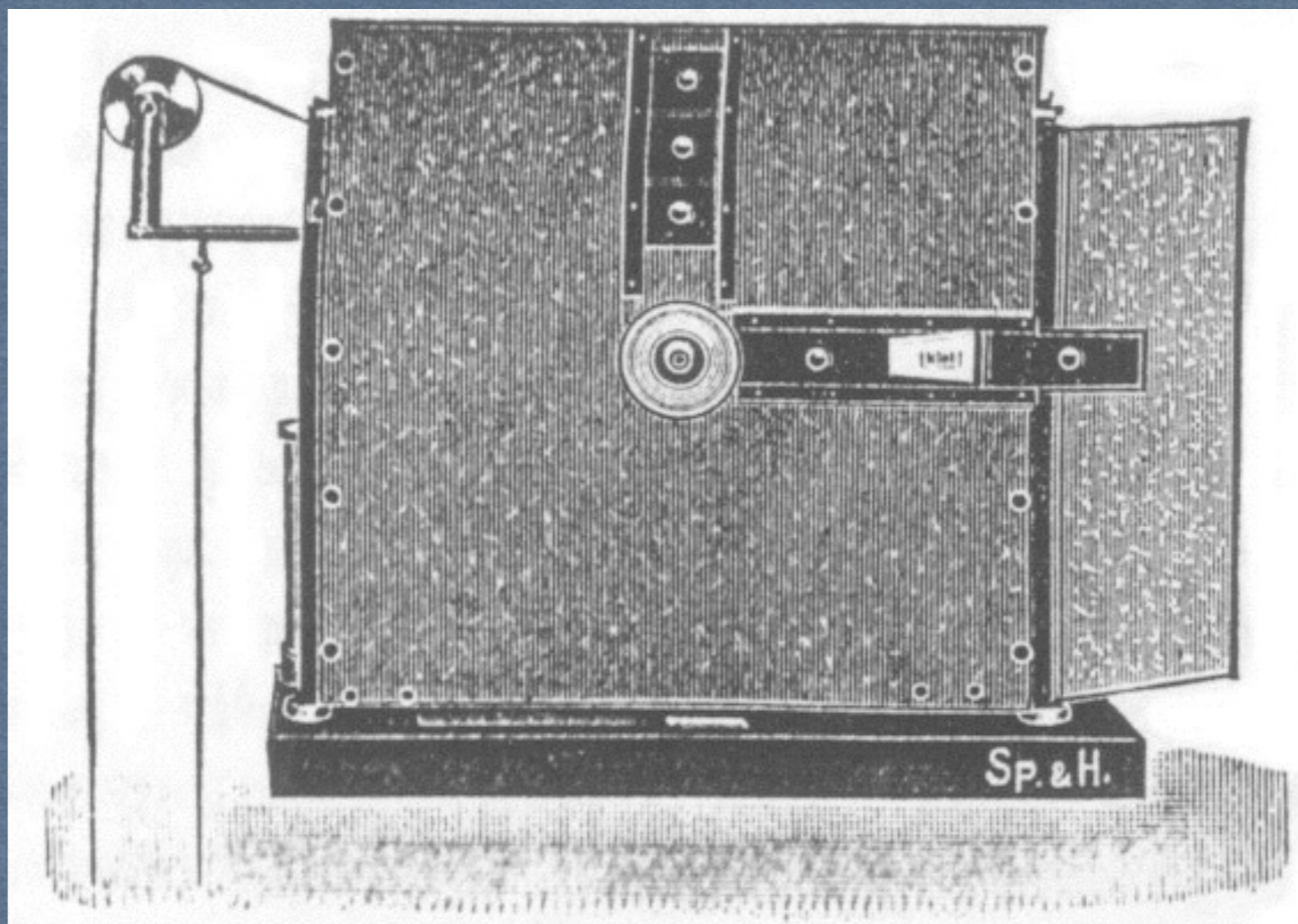
Kymograf

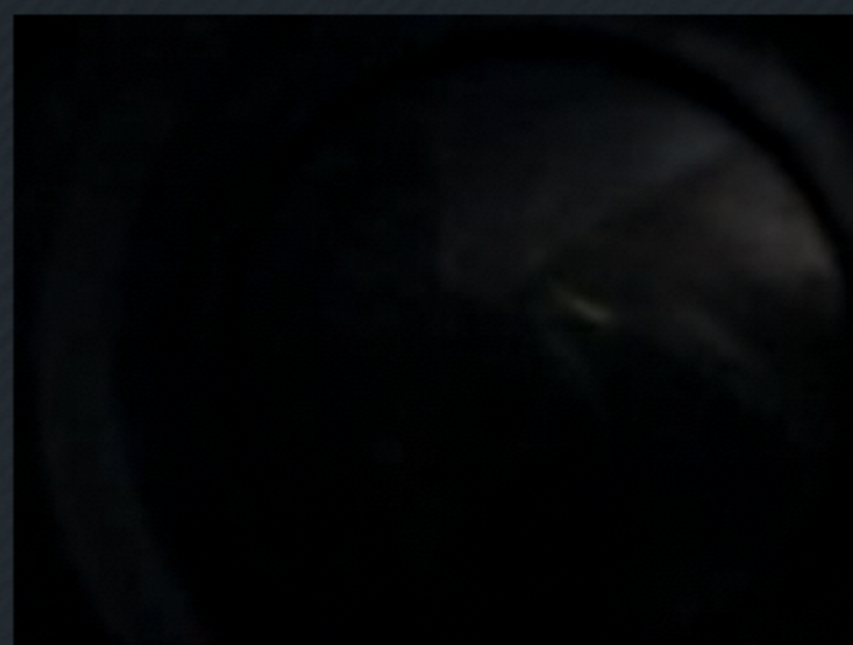
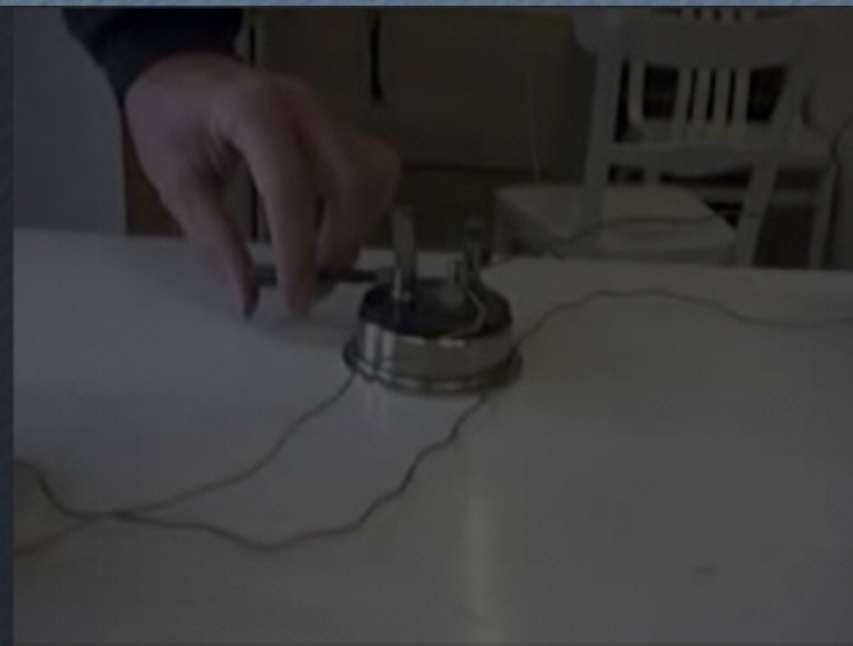
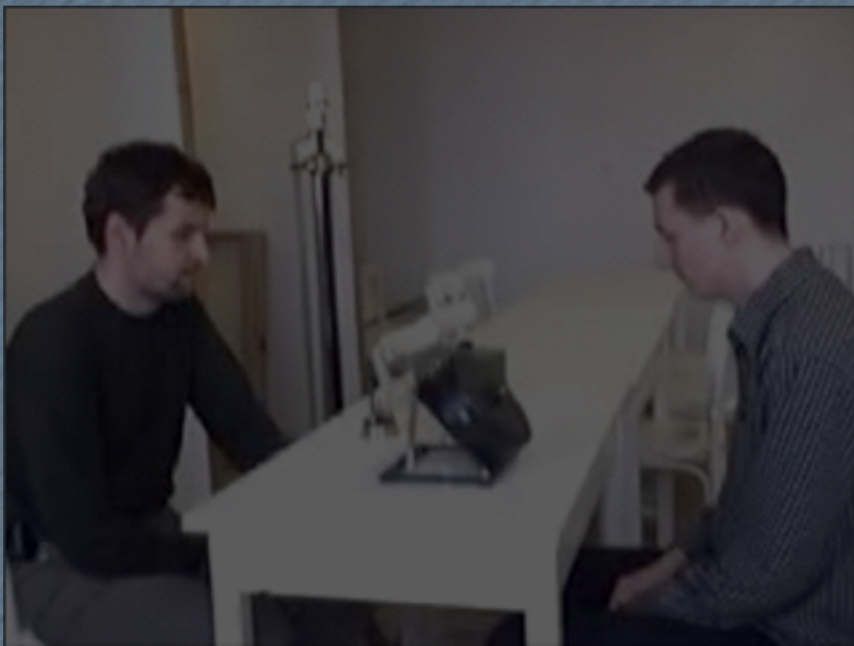
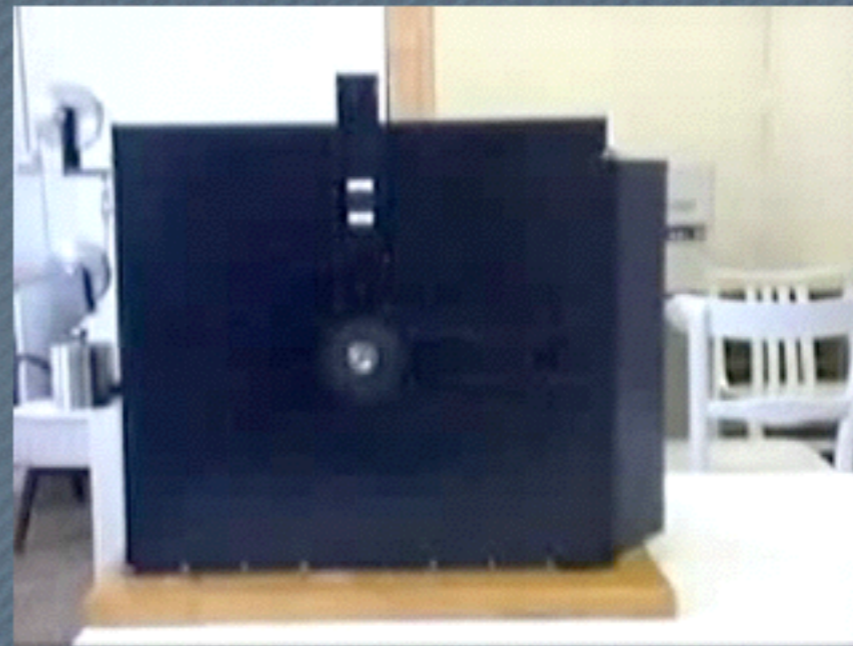


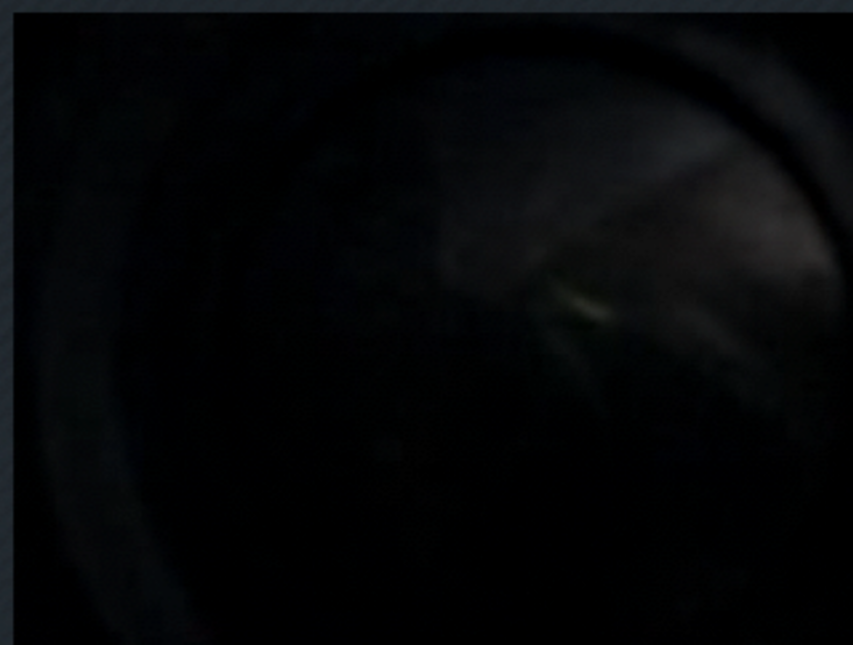
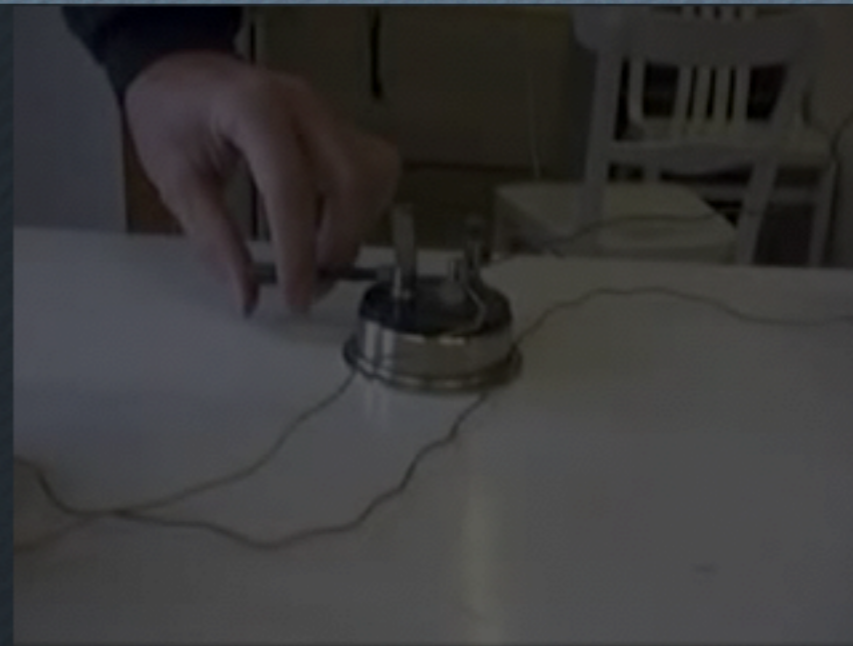
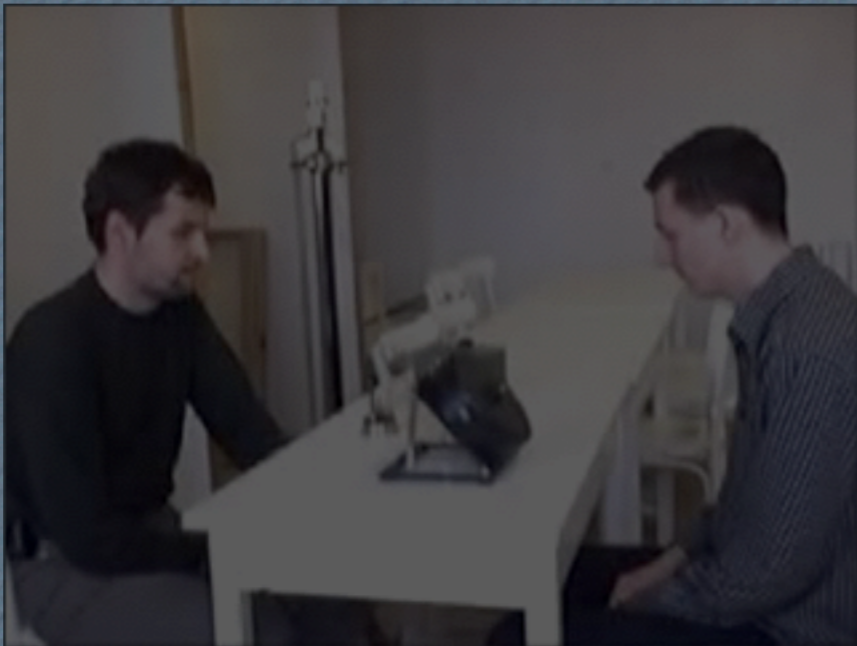
Tablet



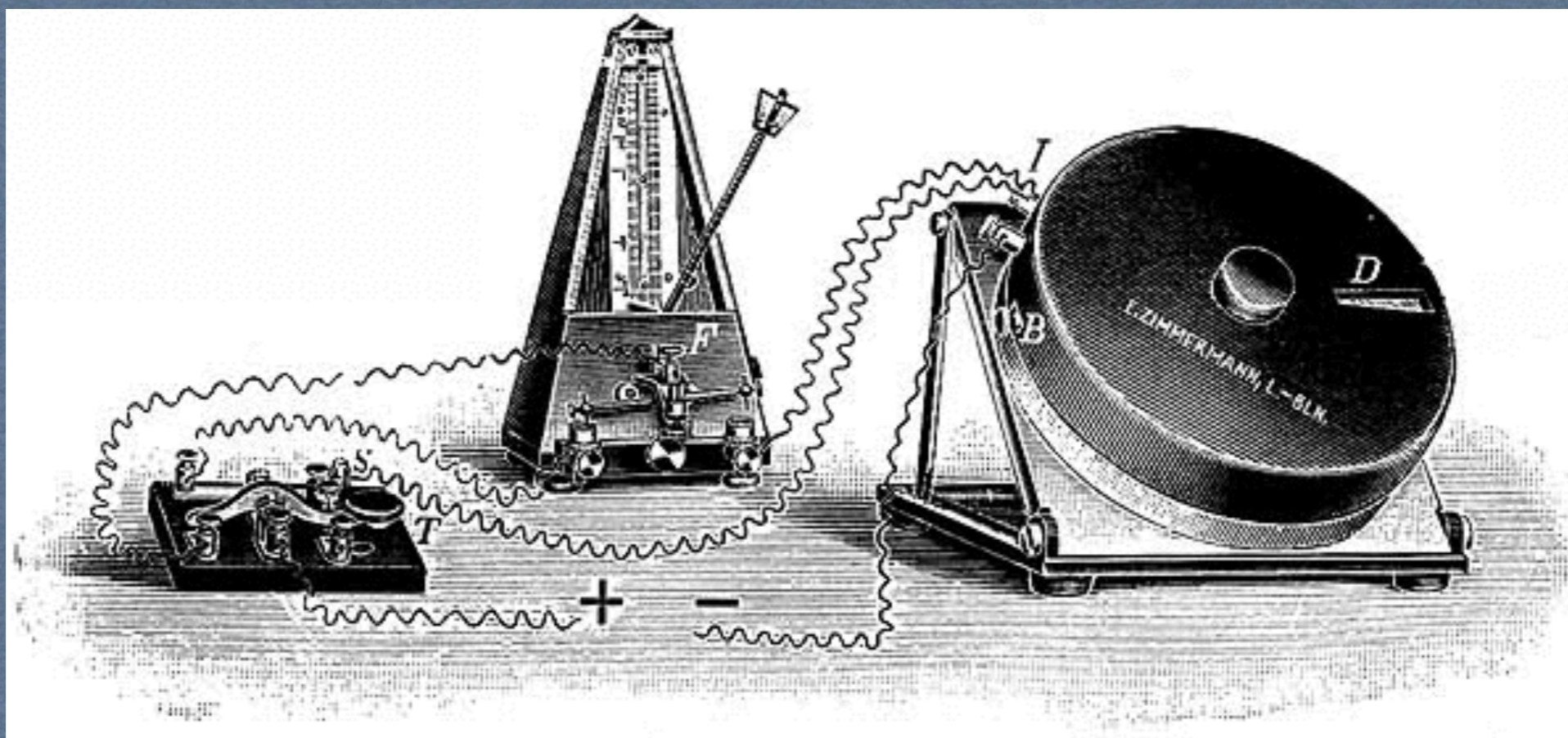
Asociační zařízení (Meier, H.)

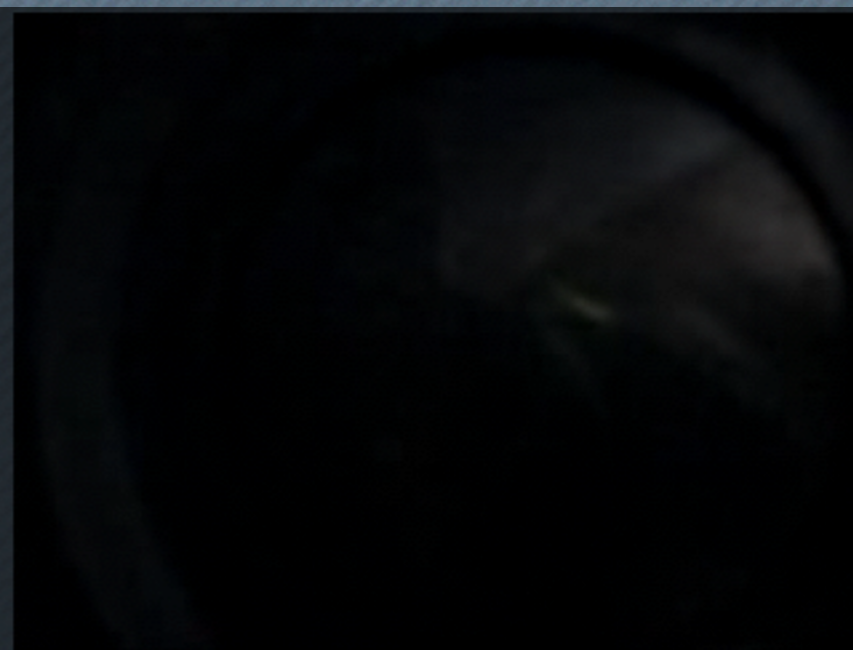
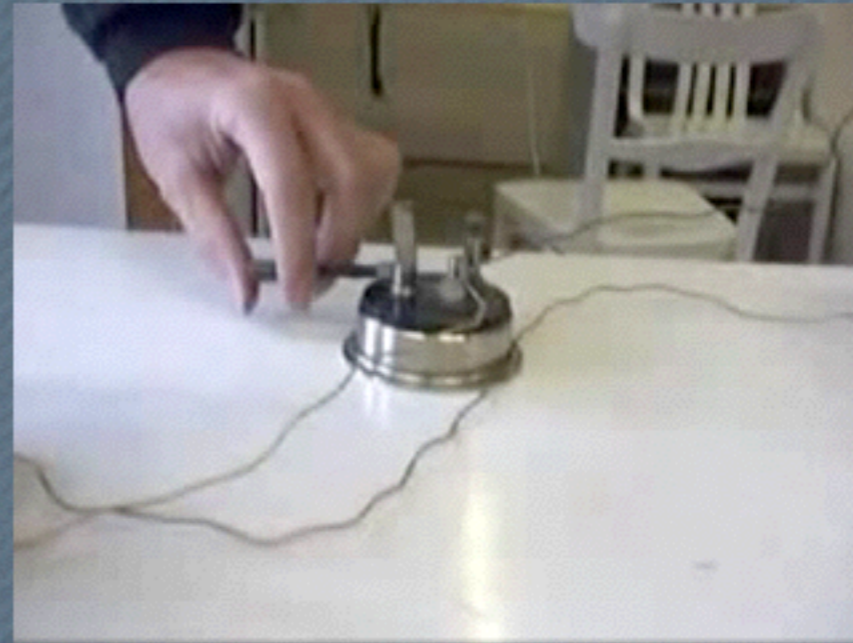
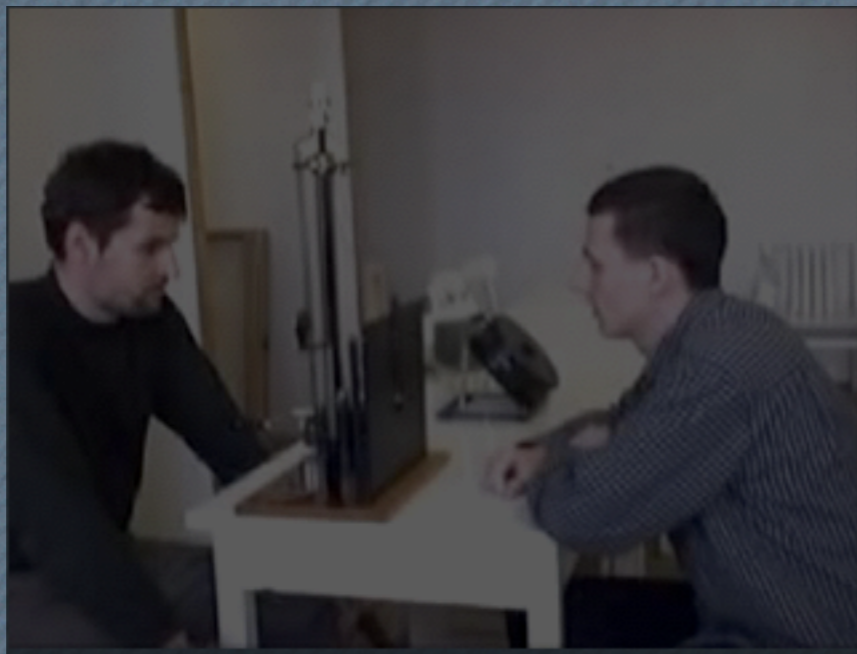


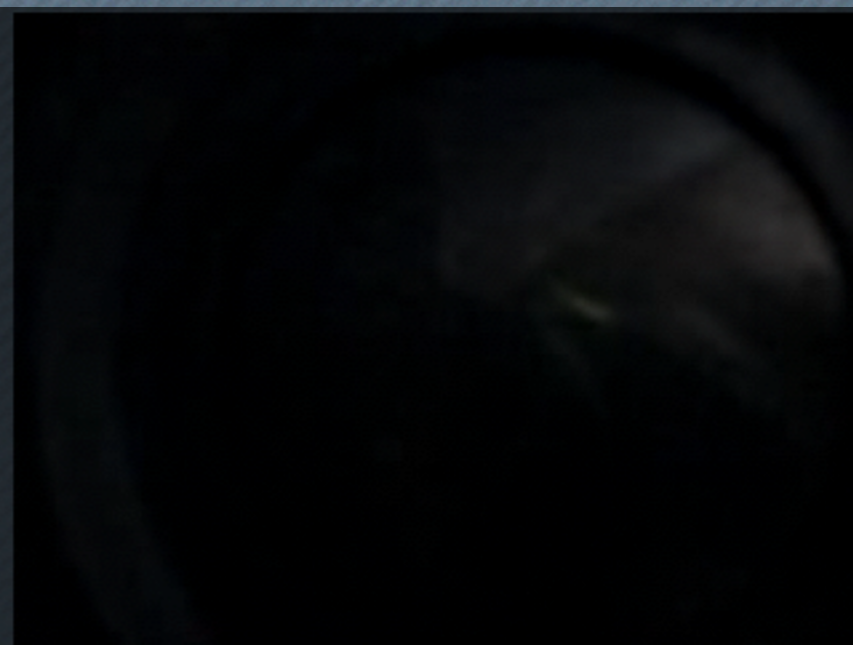
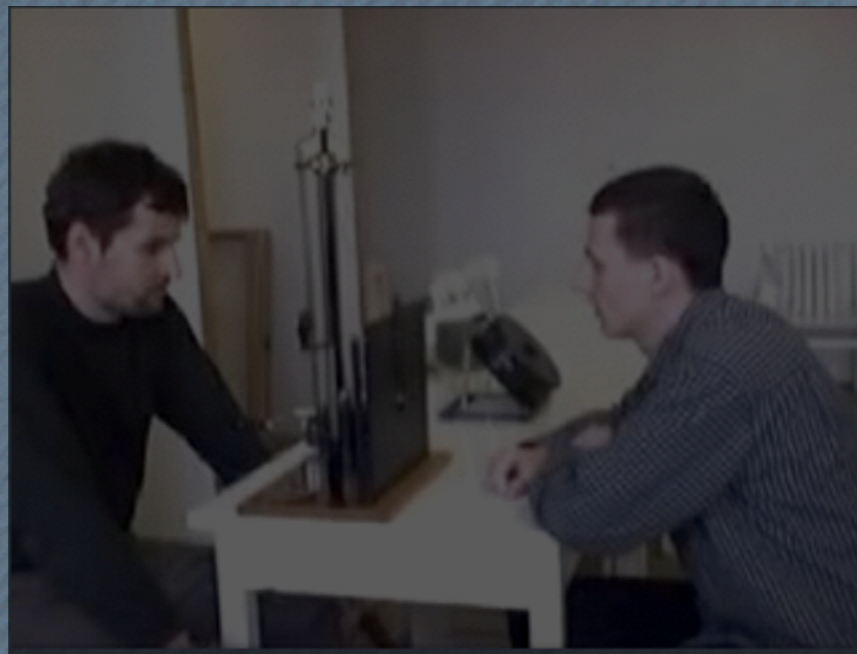




Ranschburgův mnemometr







Tachistoskop (Rostohar, M.)



