

V.

Vzorce žalmů

Tonus I.

1. Dixit Dóminus Dómino MÉ - o: * Sé-de a dextris MÉ - is.

nebo: MÉ - is. nebo: MÉ - is. nebo: MÉ - is. nebo: MÉ - is.

Tonus II.

1. Dixit Dóminus Dómino MÉ - o: * Sé-de a dextris MÉ - is. Fle - xa +

Tonus II.

1. Dixit Dóminus Dómino MÉ - o: * Sé-de a dextris MÉ - is. Fle - xa +

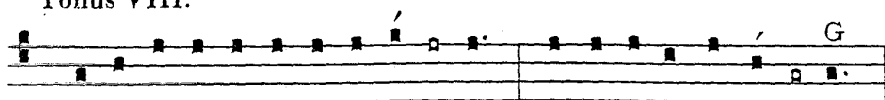
nebo: MÉ - is. Fle - xa +

Tonus III.

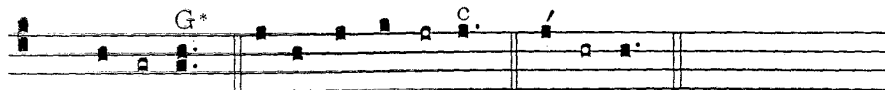
1. Dixit Dóminus Dómino MÉ - o: * Sé-de a dextris MÉ - is.

nebo: MÉ - is. dextris mé - is. Fle - xa +

Tonus VIII.

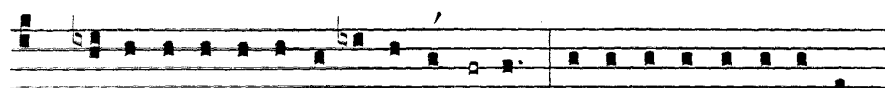


1. Dixit Dóminus Dómino MÉ - o: * Sé-de a *déxtris* MÉ - is.

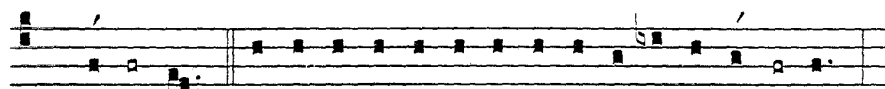


MÉ - is. a *déxtris* MÉ - is. Fle - xa +

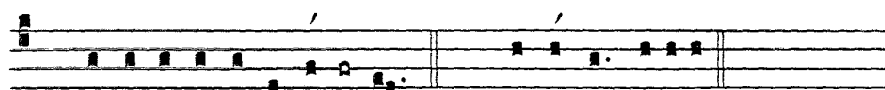
Podle těchto nápěvů se zpívají všechny žalmy. Žalm 113. *In exitu* užívá nejčastěji vzorce zvaného *Tonus Peregrinus*:



1. In é-xi-tu Is-ra-el de Ae-GÝP - to, * dómus Jacob de pó-pu-lo



BÁR-ba-ro: 2. Fácta est Ju-daé-a san-cti-fi-cá-ti-o É - jus: *



Is-ra-el pot-é-stas É - jus. *Flexa*: palpábunt: