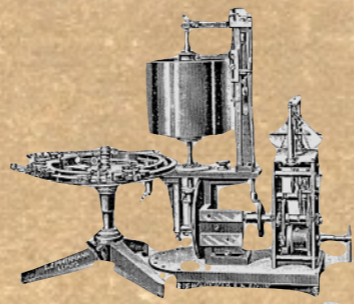


A 131

166/32131

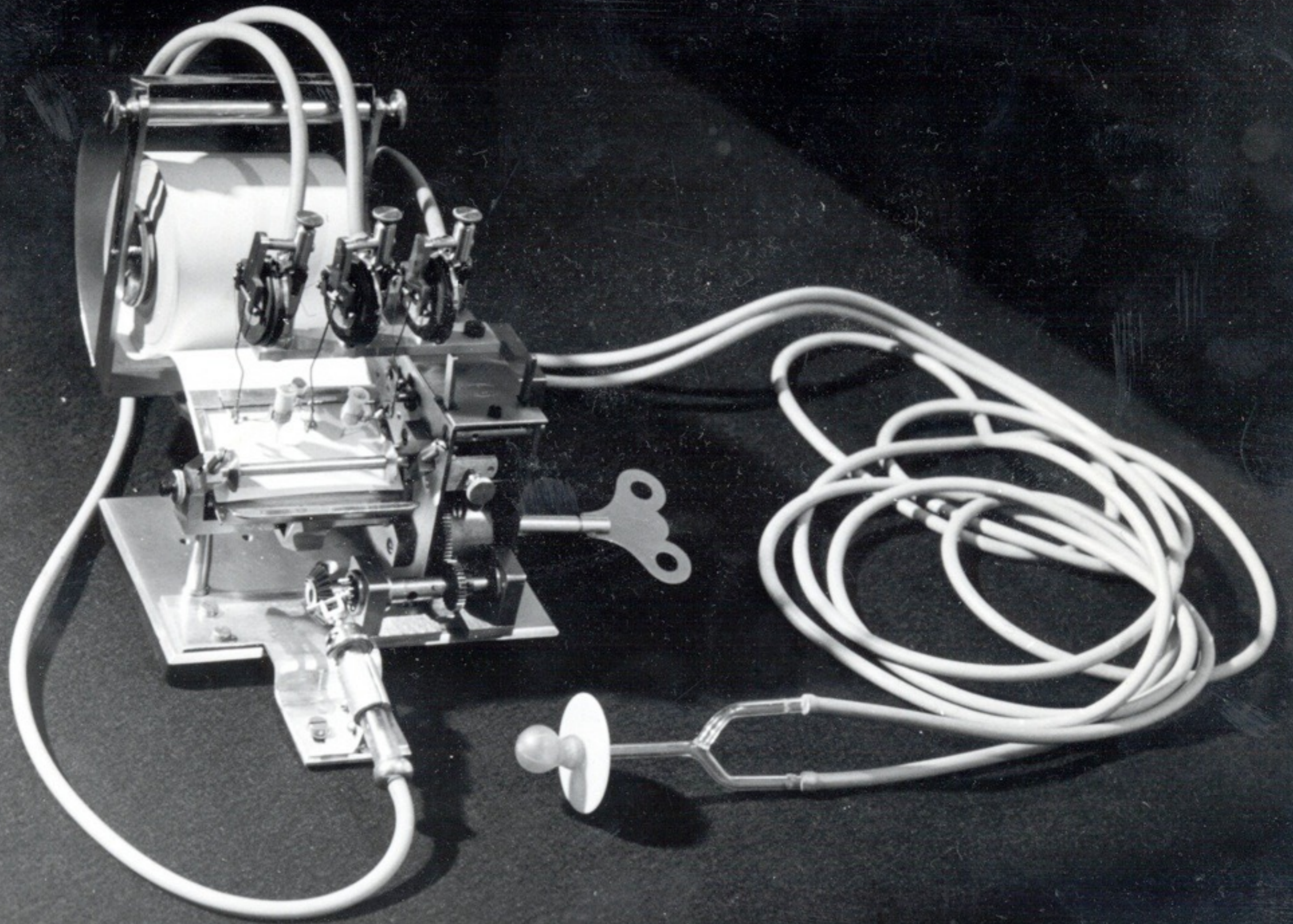
Vybrané části dějin psychologie
u kostce



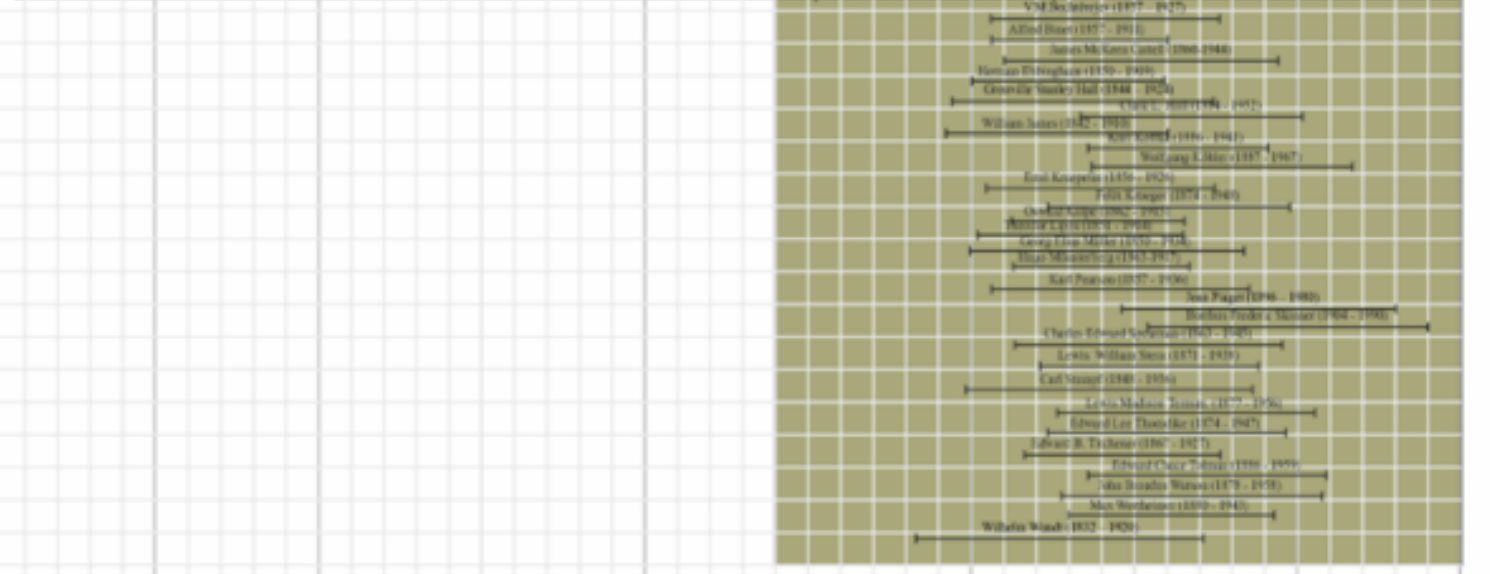
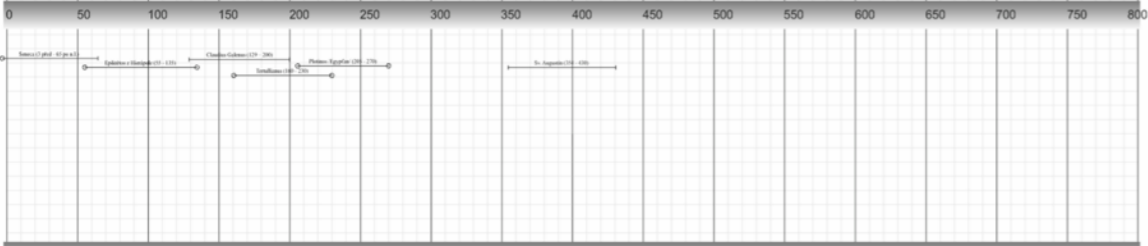
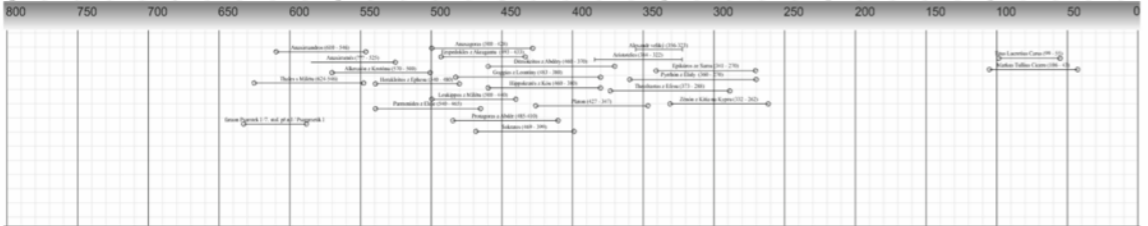
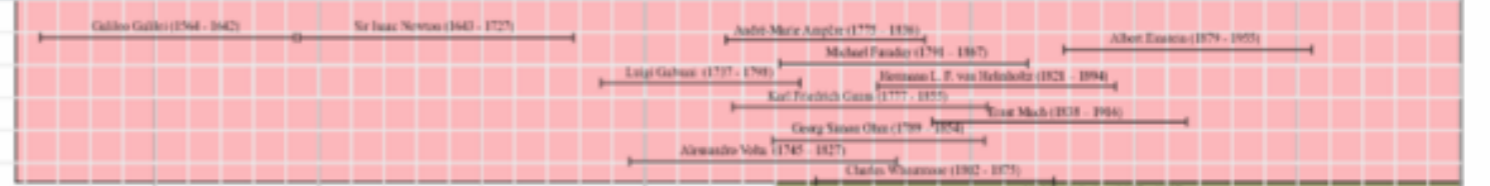
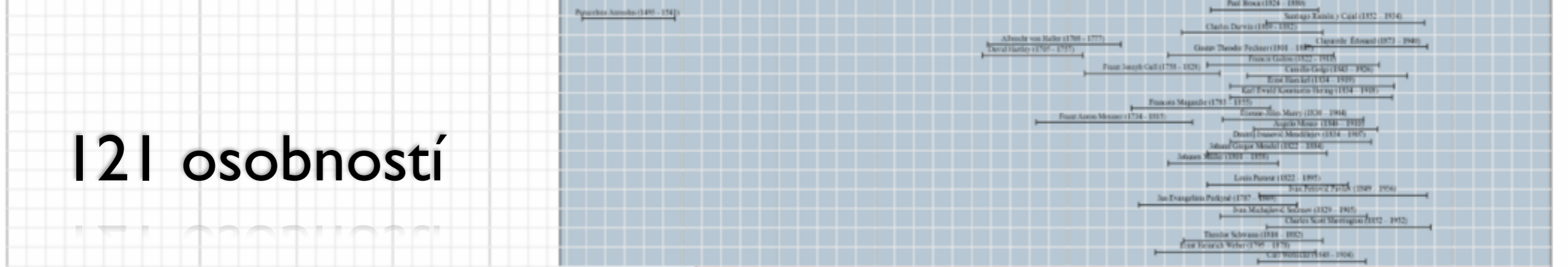
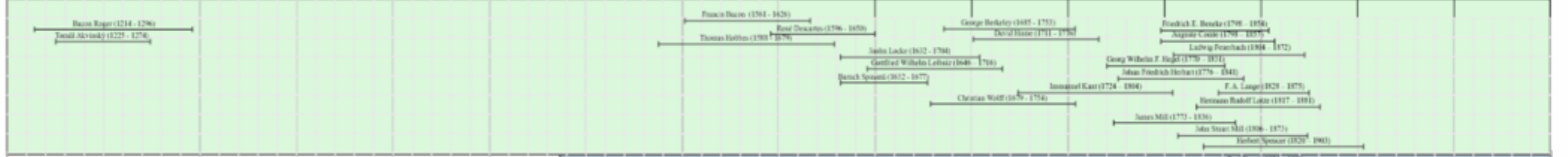
“Když můžeš to, o čem hovoříš, změřit a vyjádřit to v číslech, něco o tom víš; ale když to nemůžeš změřit ani vyčíslit, tvoje znalosti jsou chudé a neuspokojivé.”

lord Kelvin





1200 1250 1300 1350 1400 1450 1500 1550 1600 1650 1700 1750 1800 1850 1900 1950 2000



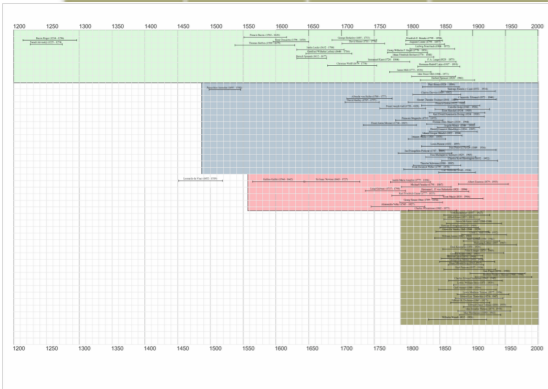
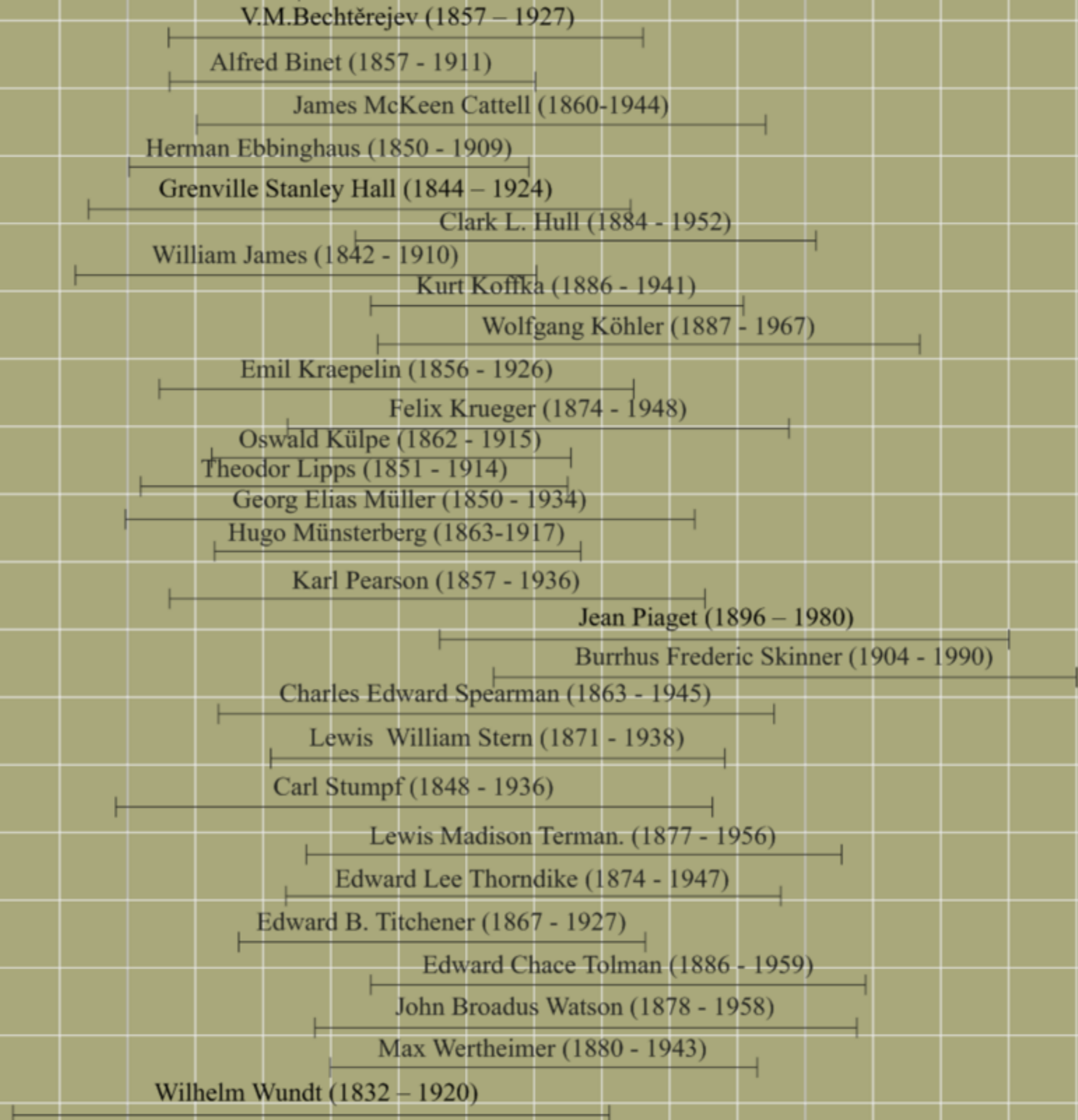
800 750 700 650 600 550 500 450 400 350 300 250 200 150 100 50 0

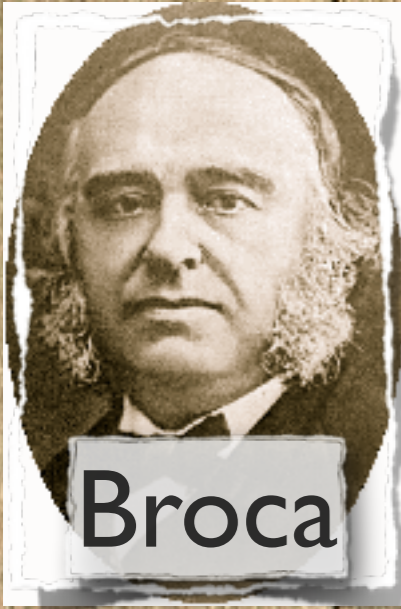
0 50 100 150 200 250 300 350 400 450 500 550 600 650 700 750 800

850 900 950 1000 1050 1100 1150 1200

1200 1250 1300 1350 1400 1450 1500 1550 1600 1650 1700 1750 1800 1850 1900 1950 2000

121 osobností





Broca



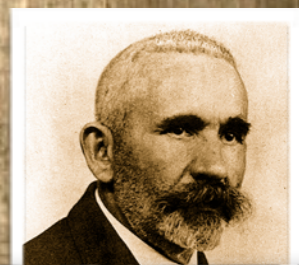
Feuerbach



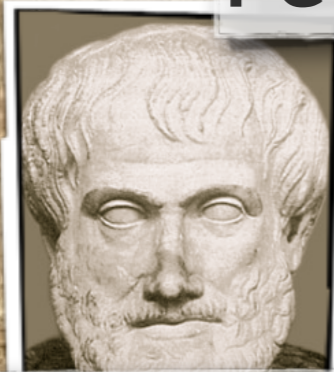
Hume



Binet



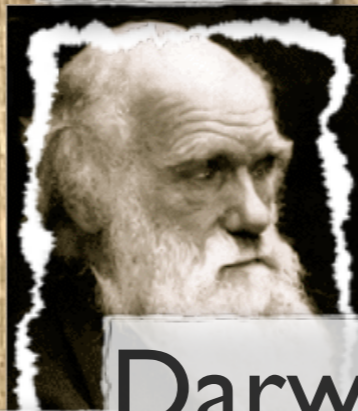
Kraepelin



Aristoteles



Ebbinghaus



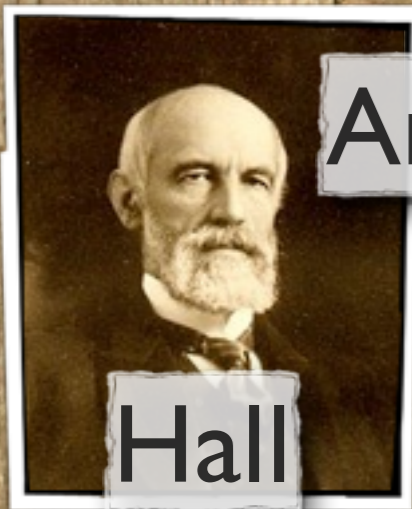
Darwin



Galton



Spencer



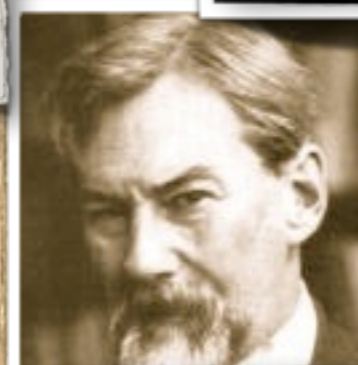
Hall



Schwann



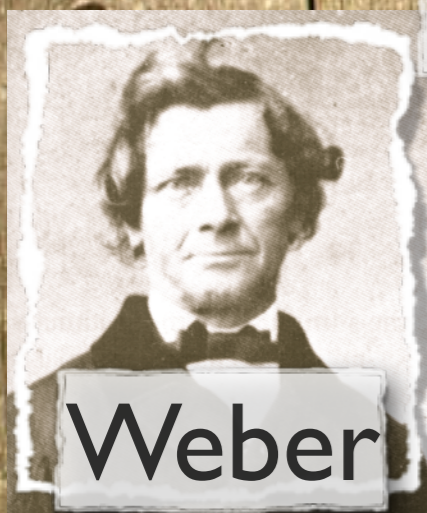
Helmholtz



Claparede



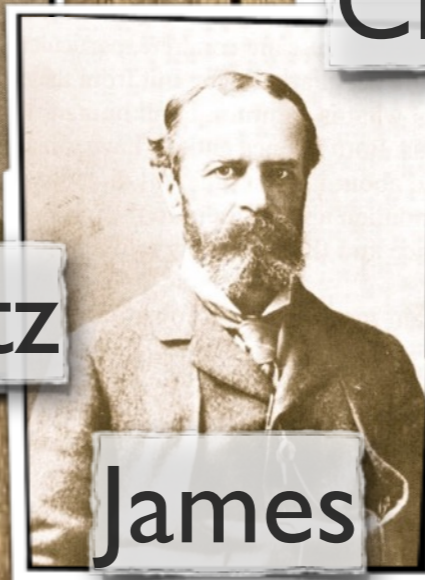
Fechner



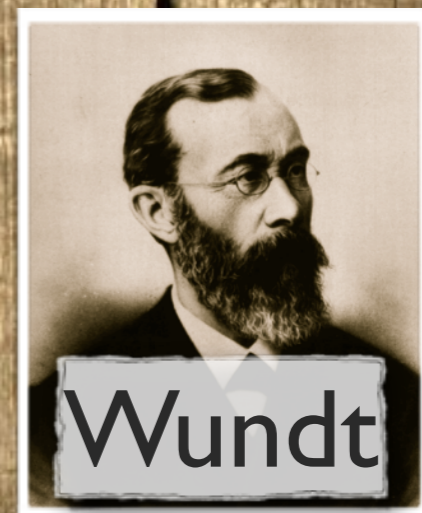
Weber



Pearson



James



Wundt

Wundt, Wilhelm (Maximilian)

Neckarau, Německo

16.08.1832

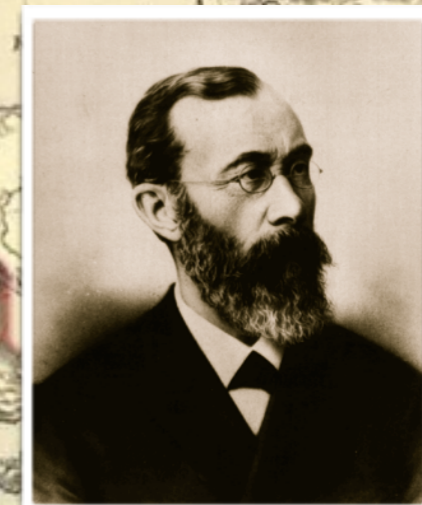
Großbothen, Německo

31.08.1920

Leipzig 1875 - 1917

Heidelberg 1852-1874

Zurich 1874



www.history-ma.com

Wundt, Wilhelm (Maximilian)

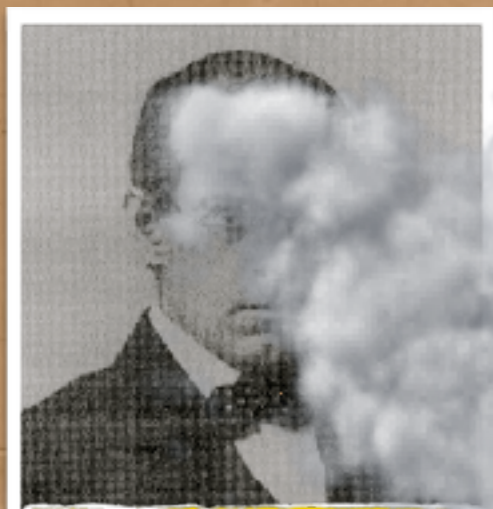
Neckarau, Německo

16.08.1832

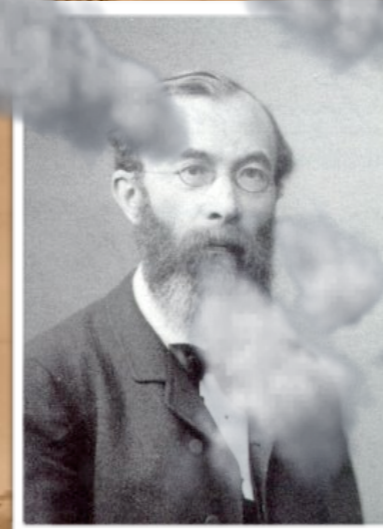
Großbothen, Německo

31.08.1877

Wenn Sie ebenfalls dahin kommen wollten.
Ich habe mit Fritz vereinbart, dass ich
ihn abholen werde, und werden wir bald
nach 4 Uhr im Laboratorium eintrif-
fen. Sie möglichen Falls bereit sind,
dann natürlich nicht, ob dieser
Besuch Ihnen gelegen ist, und
wenn Sie nicht im
Laboratorium antreffen, annehmen, dass
wir nicht da sind.
Mit besten Grüßen
Ihr W. Wundt.



James McKeen Cattell.



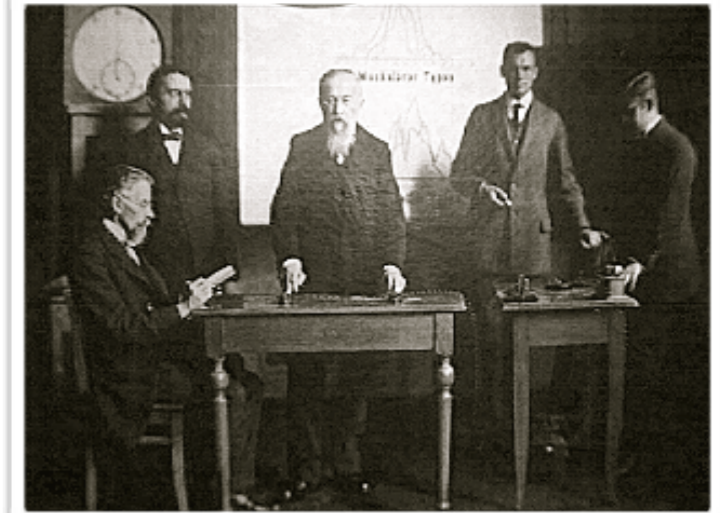
1912

Otto Klemm

Ottmar Dittrich

Friedrich Sander

Wilhelm Wirth



Friedrich Sander (1889-1971)

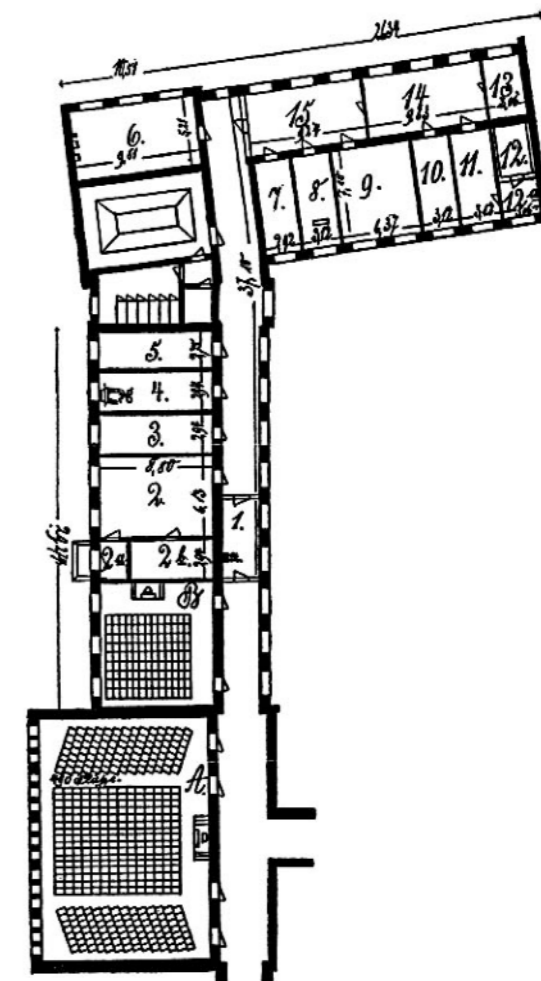
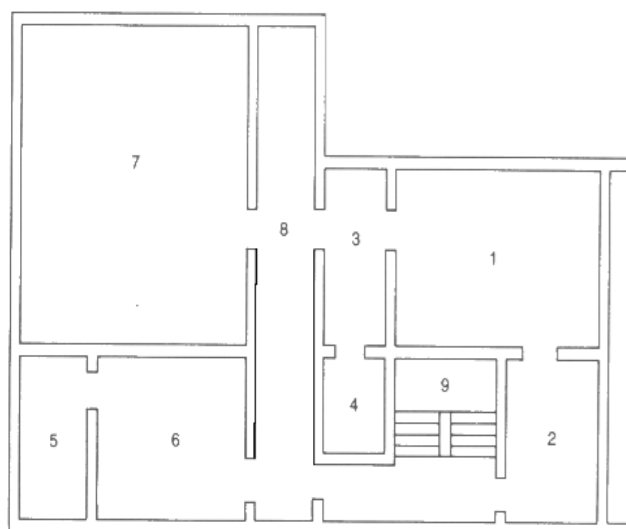
Otto Klemm (1884-1939)

Wilhelm Wirth (1876-1952)

Ottmar Dittrich (1865-1951)

Wundtova laboratoř

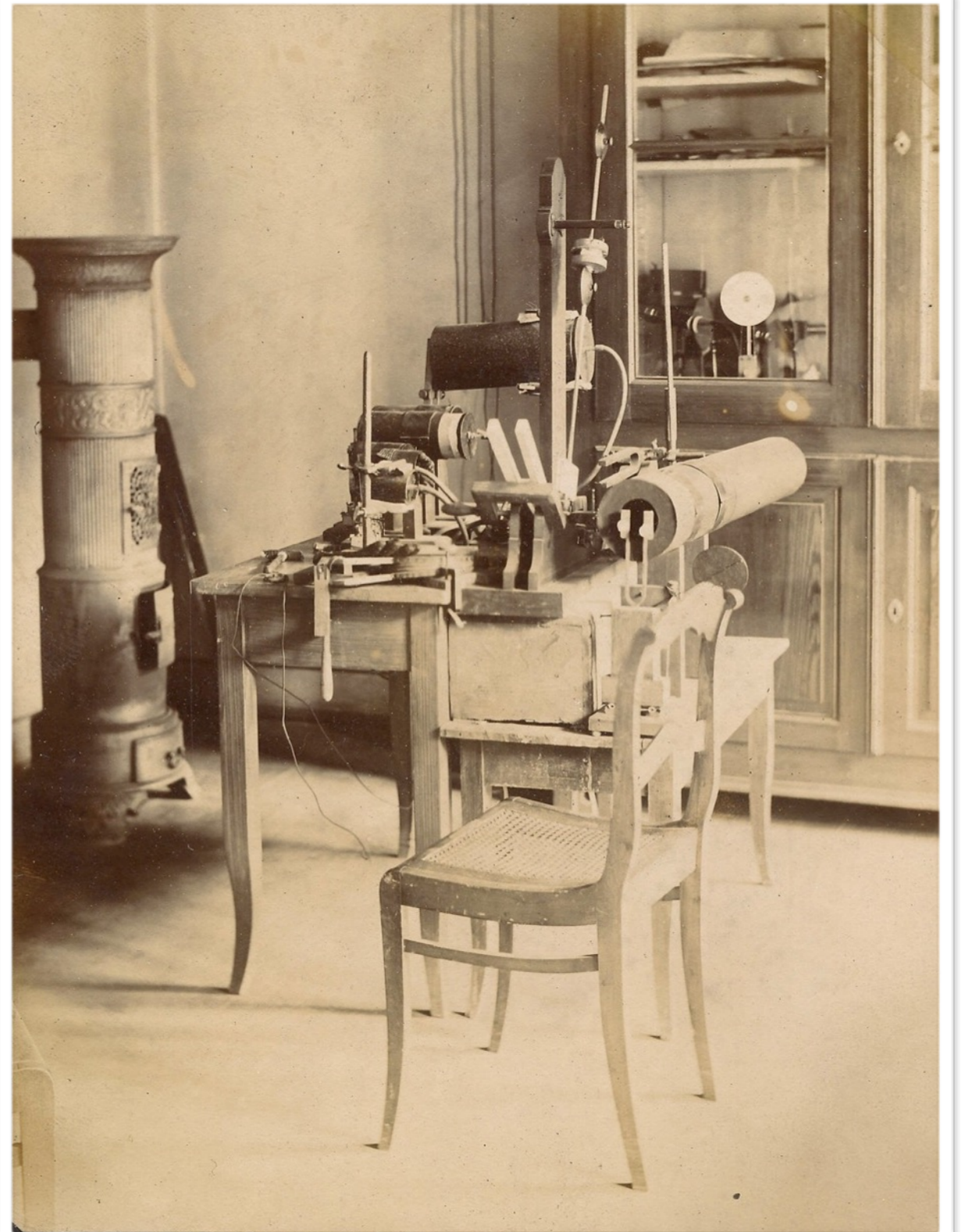
- vznik 1879 (zánik při náletu v r. 1943)

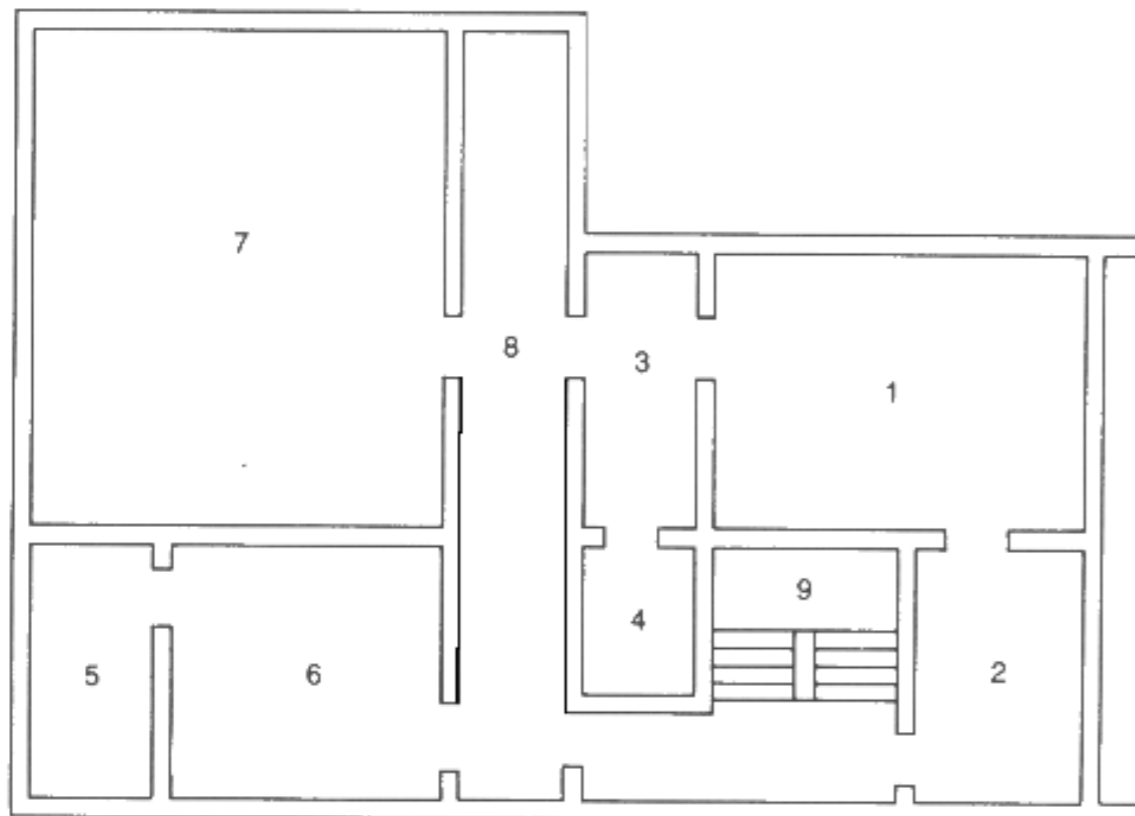


budova Konviktu
(1874 ~ 1890)

„Haus
des Grimm“
(~ 1890 - 1896)

Johaneum a
Paulinium
(1896 - 1943)

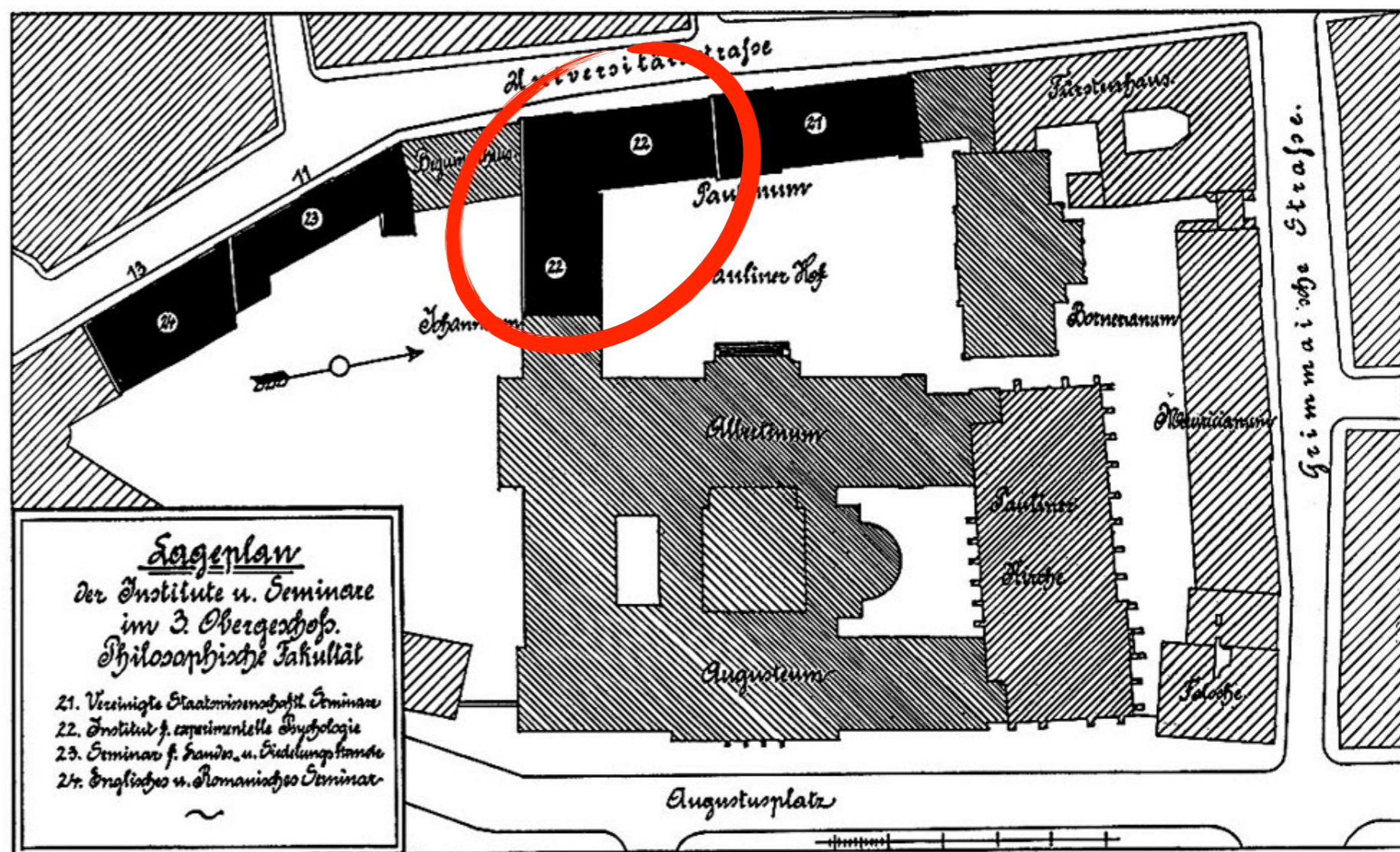




IV, 1

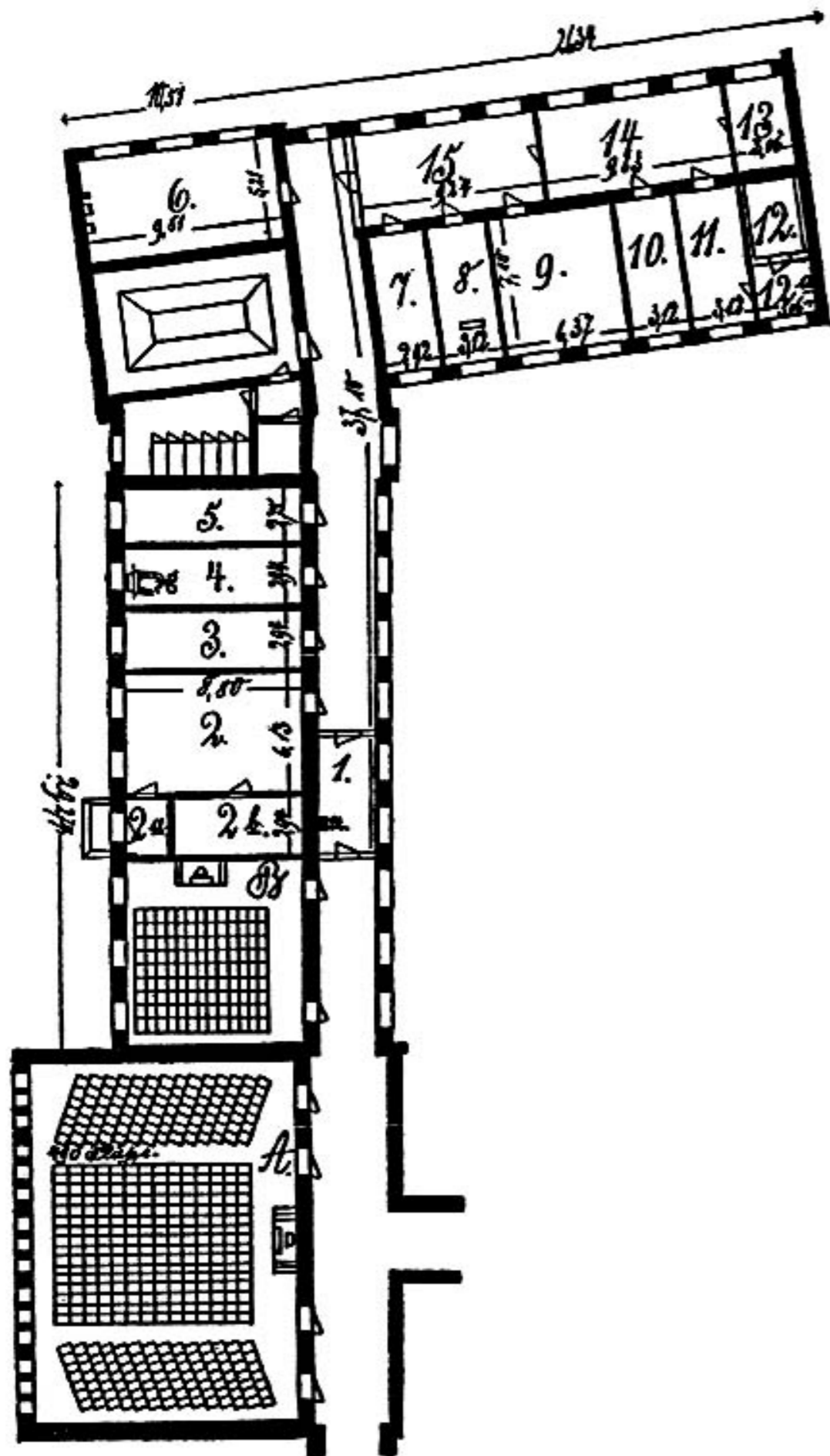
Místnosti 7 a 1 sloužily jako učebny, 2 konferenční pokoj, 3 čekárna, 4 temná komora, místnosti 5 a 6 představují laboratoře a chodba 8 se schodištěm 9 výčet prostor uzavírají (Benjamin, 1997)

Taf. XIX



Lageplan
 der Institute u. Seminare
 im 3. Obergeschoß.
 Philosophische Fakultät

21. Vereinigte Staatsministerial-Seminare
 22. Institut f. experimentelle Psychologie
 23. Seminar f. hands. u. bildungshande
 24. Englisch- u. Romanisches Seminar



Posluchárna A byla určena pro 500 posluchačů, menší posluchárna B pro 100. Wundtova pracovna je označena číslem 3. Všechny místnosti byly propojeny telefonními kabely (dnes bychom takové propojení nazvali datovou sítí).



Leipzig

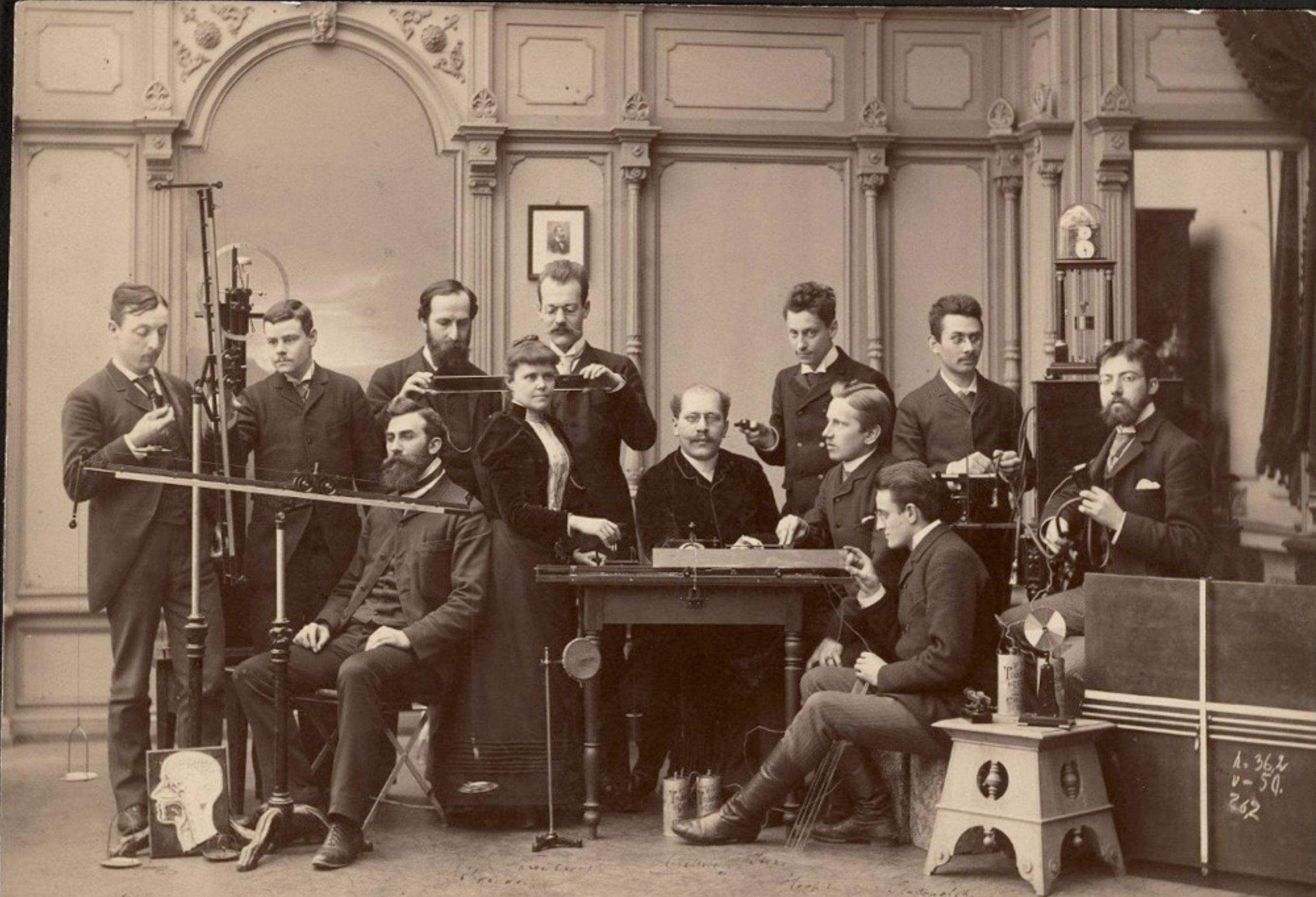
McK. Cattell 1888: "Wundt v Lipsku stanovil vzor, který následují další univerzity. Psychologické laboratoře byly založeny nebo jsou plánovány v Berlíně, Bonnu, Göttingenu; v Americe na univerzitách: Johns Hopkins, Harvard, Pensylvánie a Princeton; v Anglii v Cambridge; stejně tak v Kodani a dalších centrech.

Hugo Münsterberg

(1863 -1916)

- v r. 1887 zakládá psych. lab. ve Freiburgu a žení se
- od 1892 vedoucí psychologické laboratoře na Harvardu
- bývá považován za zakladatele aplikované psychologie - forezní, klinické, průmyslové psychologie





Münsterbergova Laboratoř ve Freiburgu (1892)

Dr. Prof. James mit verbundenem Gasse aus dem Freiburger Laboratorium für exper. Psychol. von Hugo Münsterberg

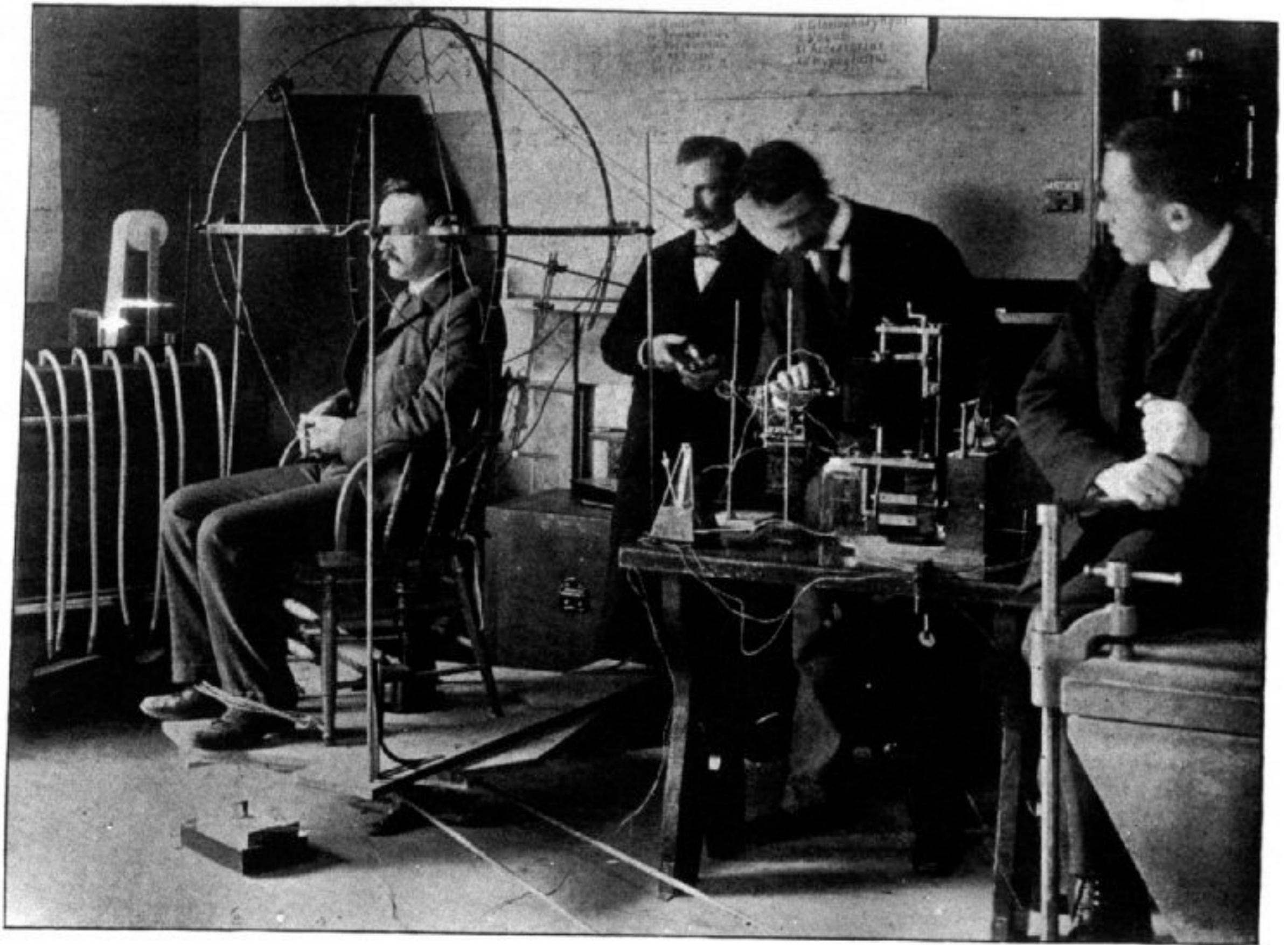
A. 36,2
v-50.
262



Psychologická laboratoř, Harvard (1892)

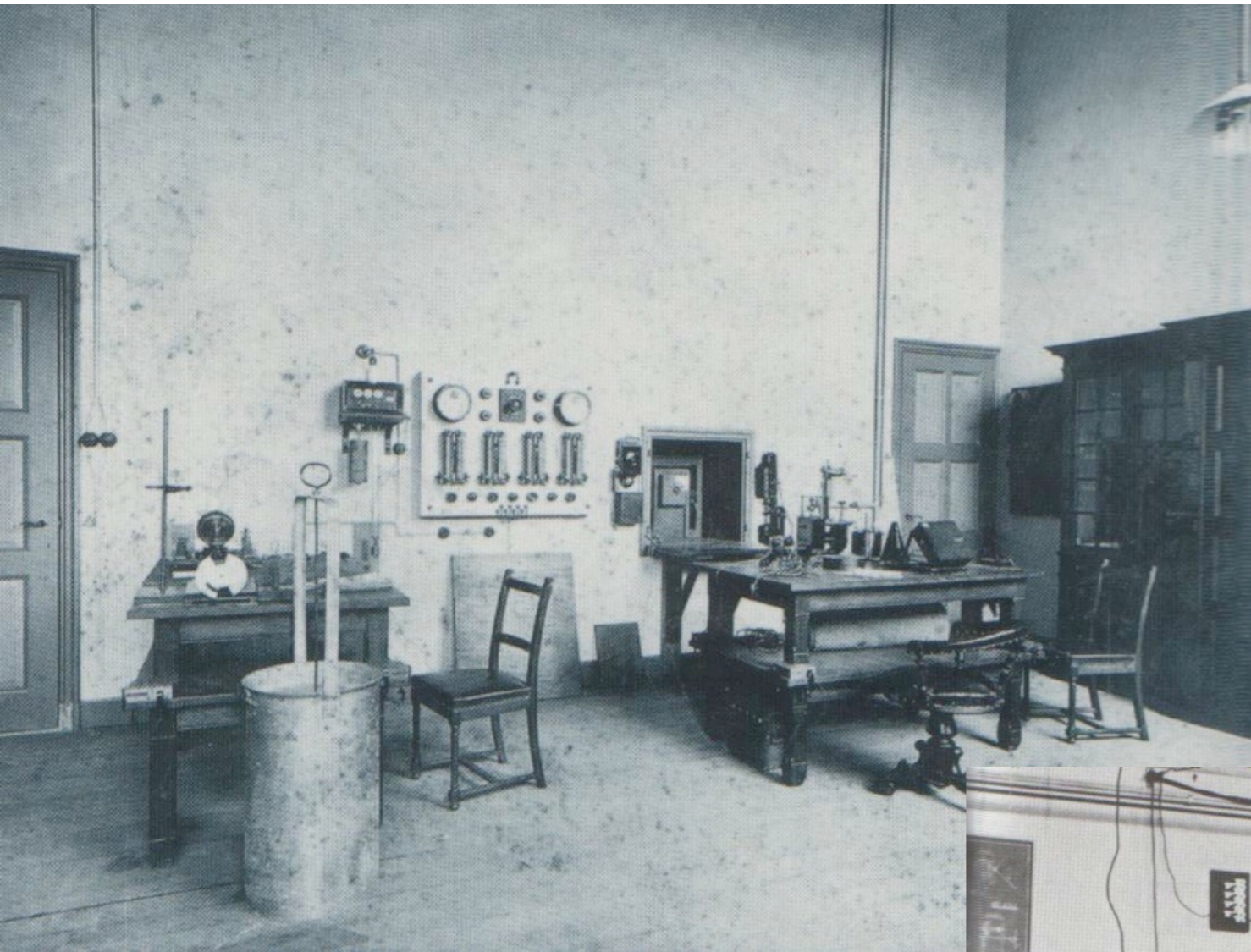


Psychologická laboratoř, Harvard (1892)



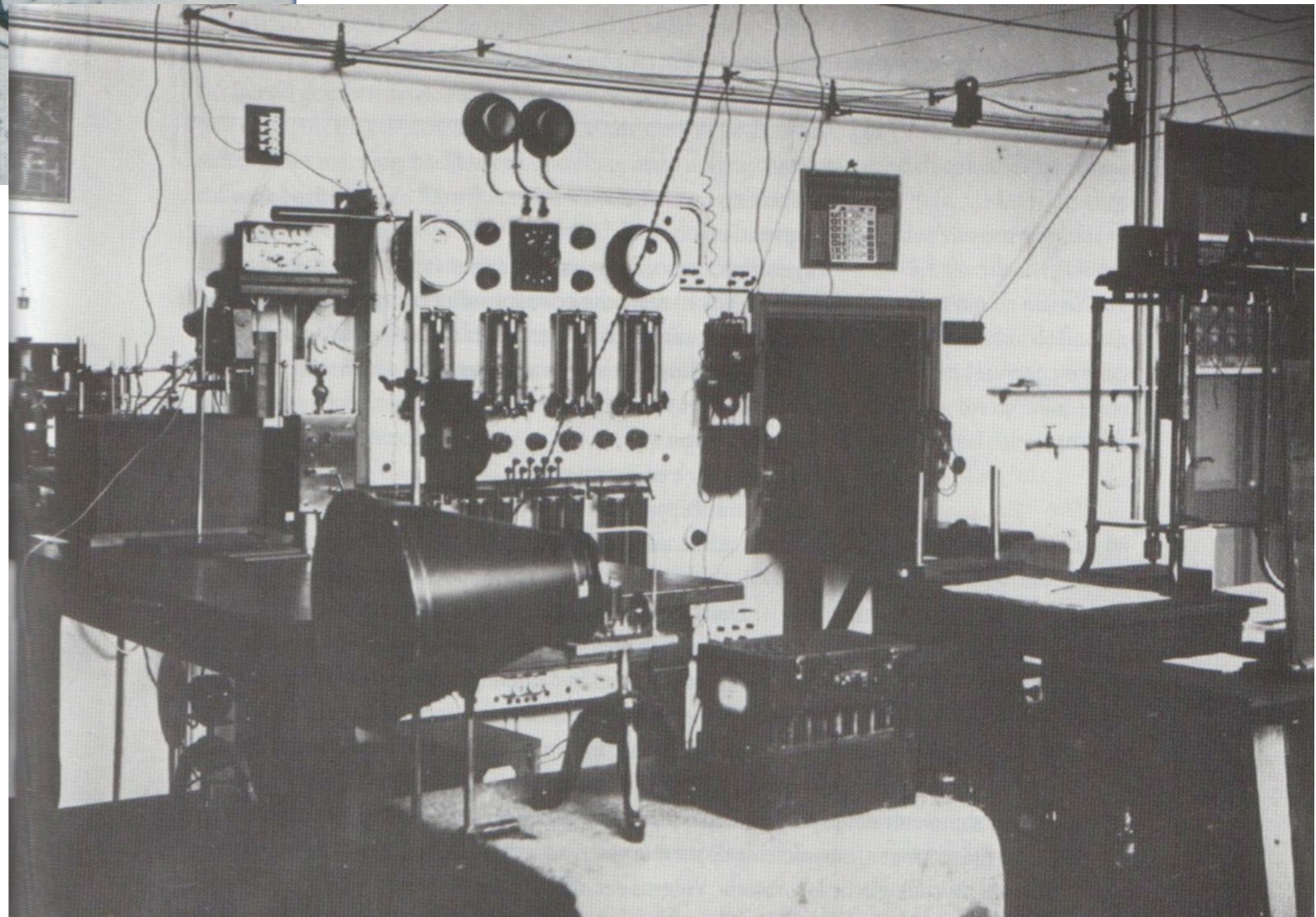
Interior of a Laboratory Room.
([illegible]... of sound.)

Psychologická laboratoř, Harvard (1892)



Groningen 1914

Groningen 1932



Leipzig

Prague, 1912

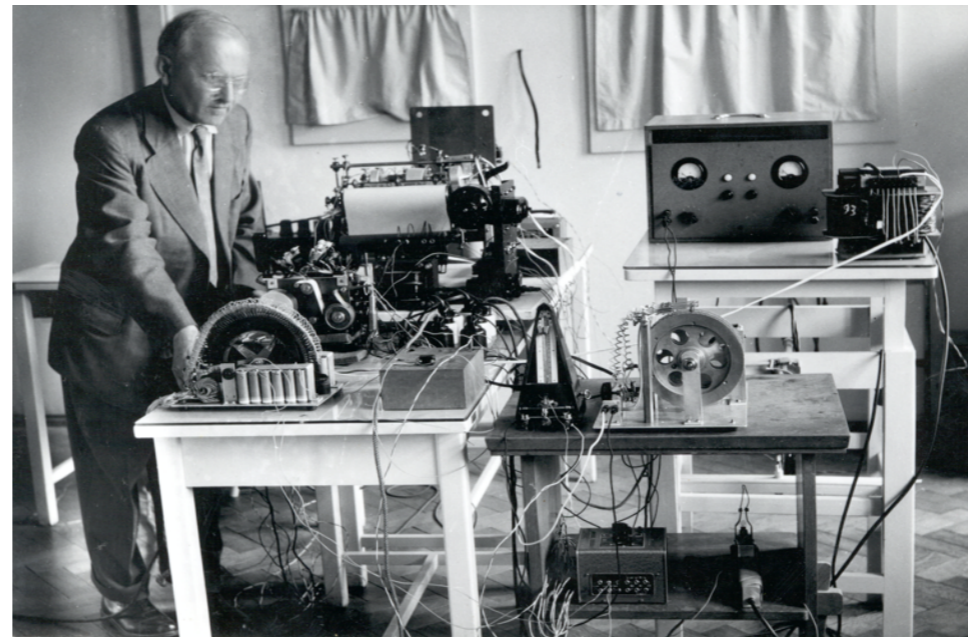
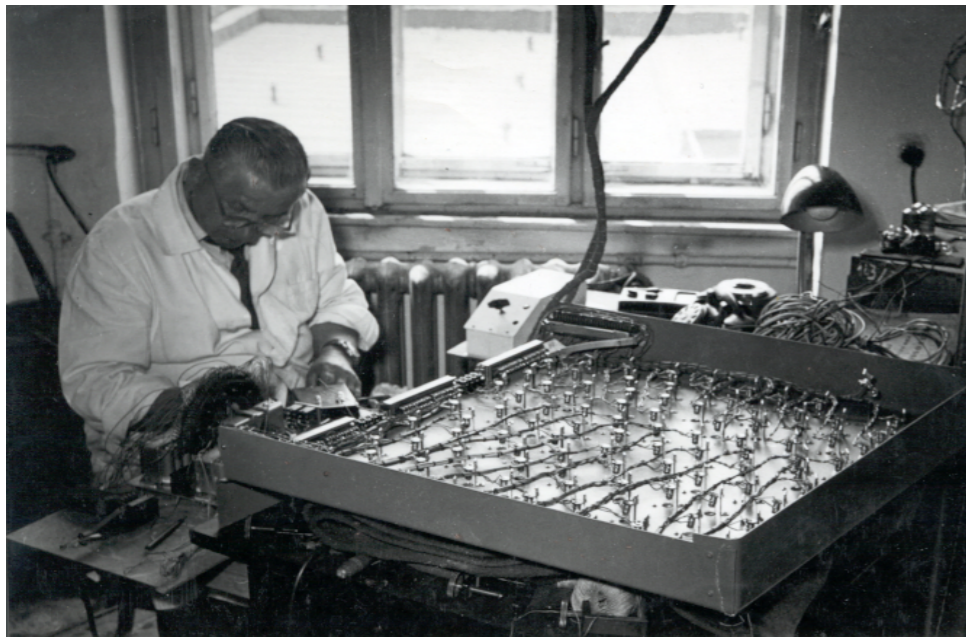
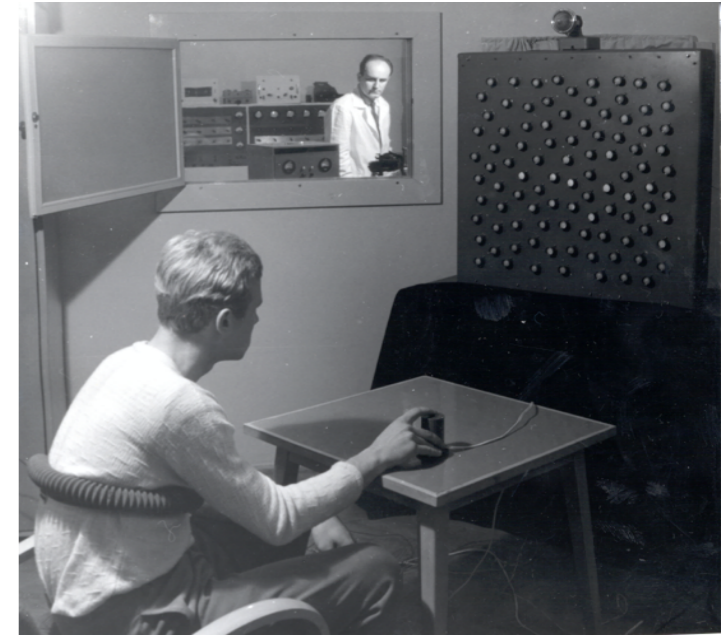
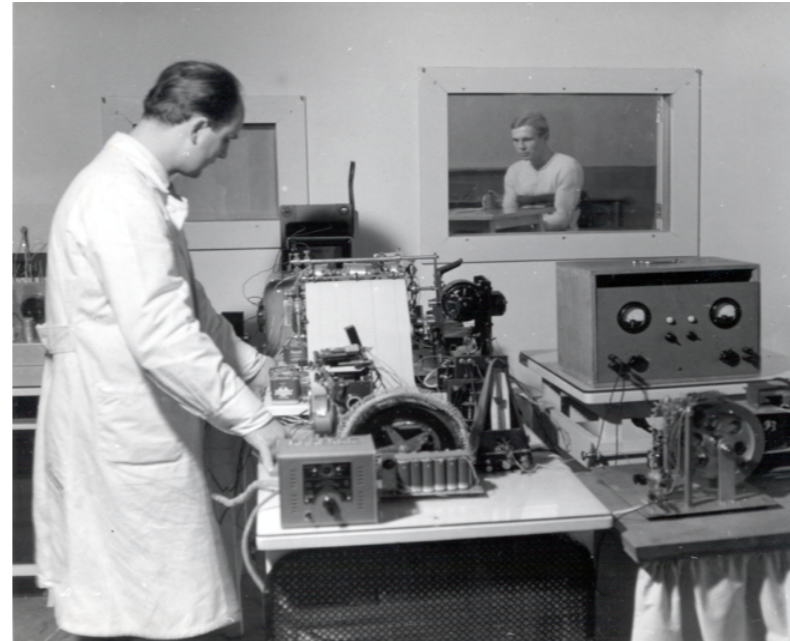
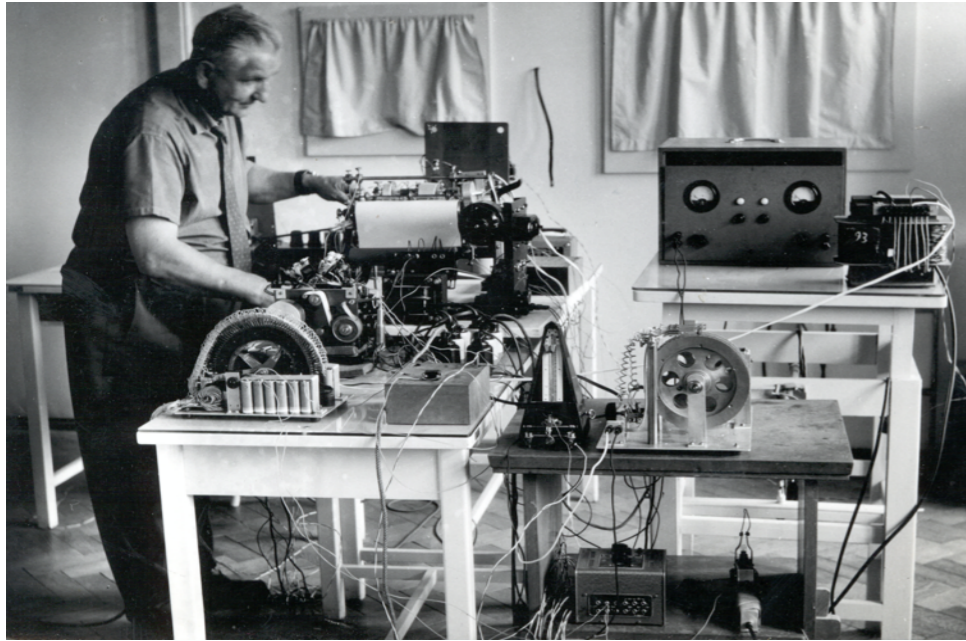
Brno, 1926

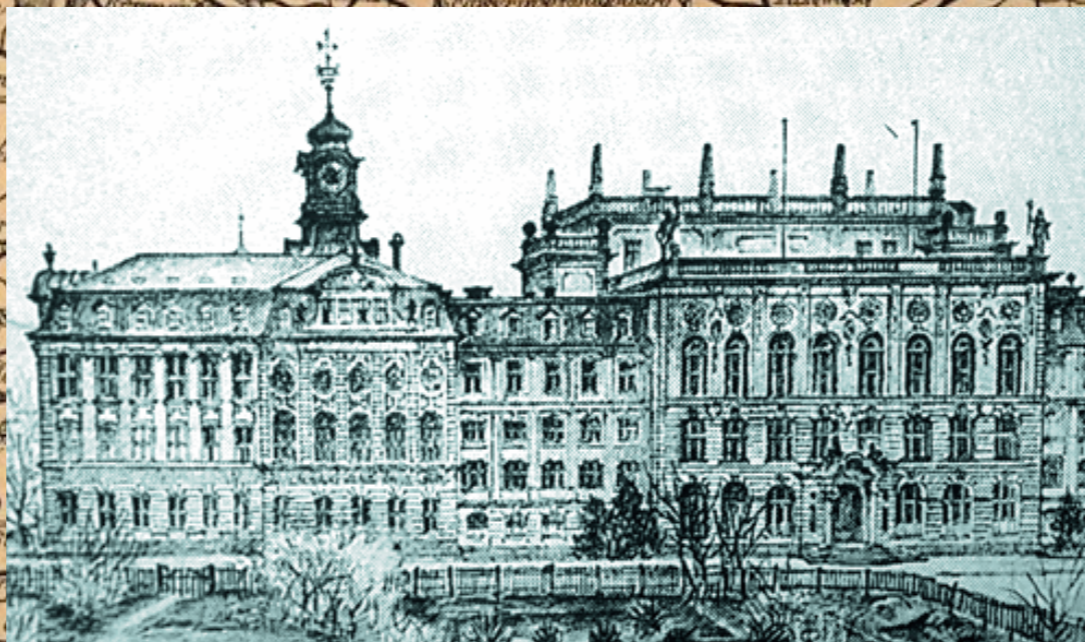
- Prof. Rostohar, student Prof. Wundta, založil psychologické laboratoře v Praze, Brně a v Lublani.



Historické laboratoře experimentální psychologie

Ø brněnská psychologická laboratoř
- vznik 1926





Frankfurt

Max Wertheimer
1880 - 1943

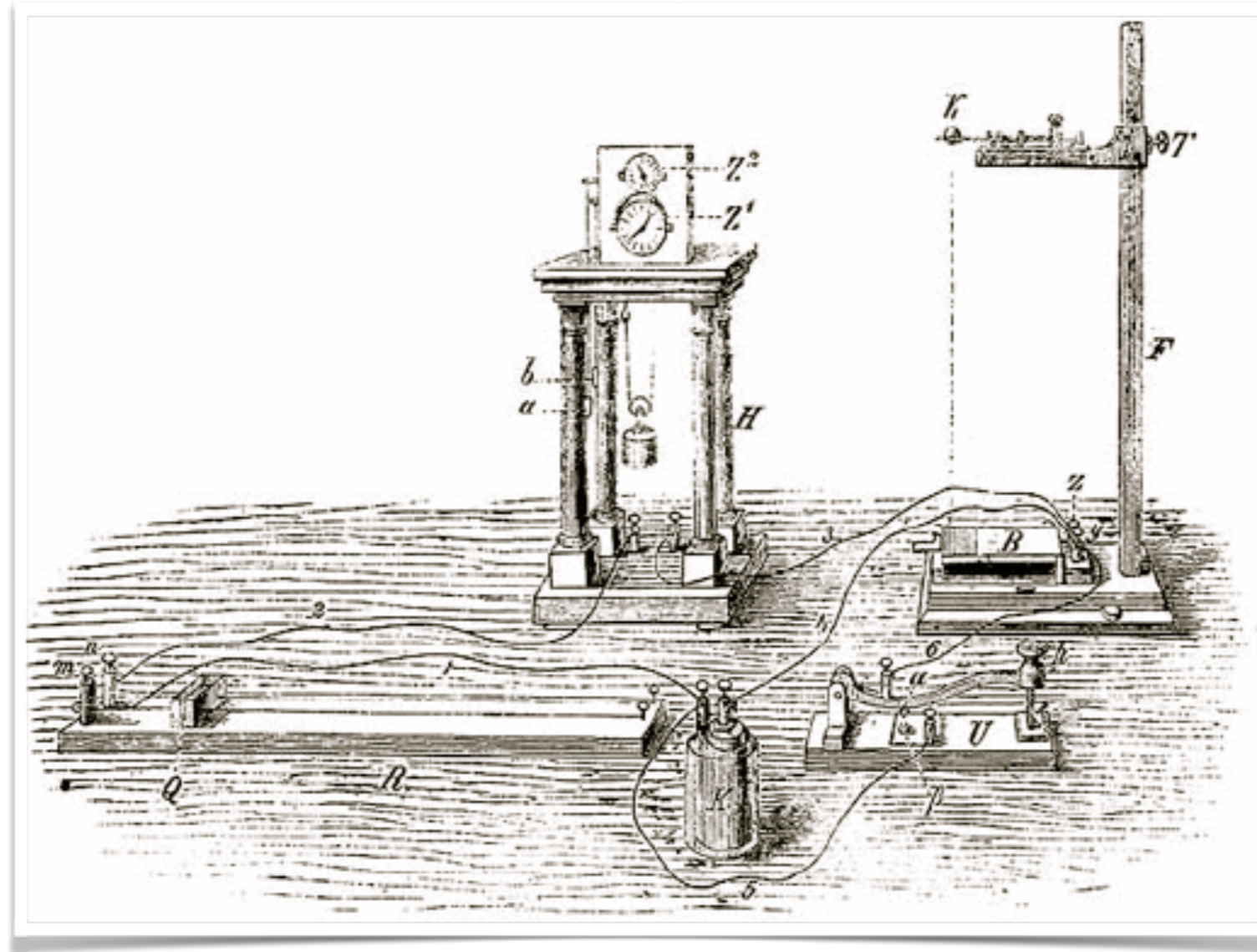


W. Köhler K. Koffka



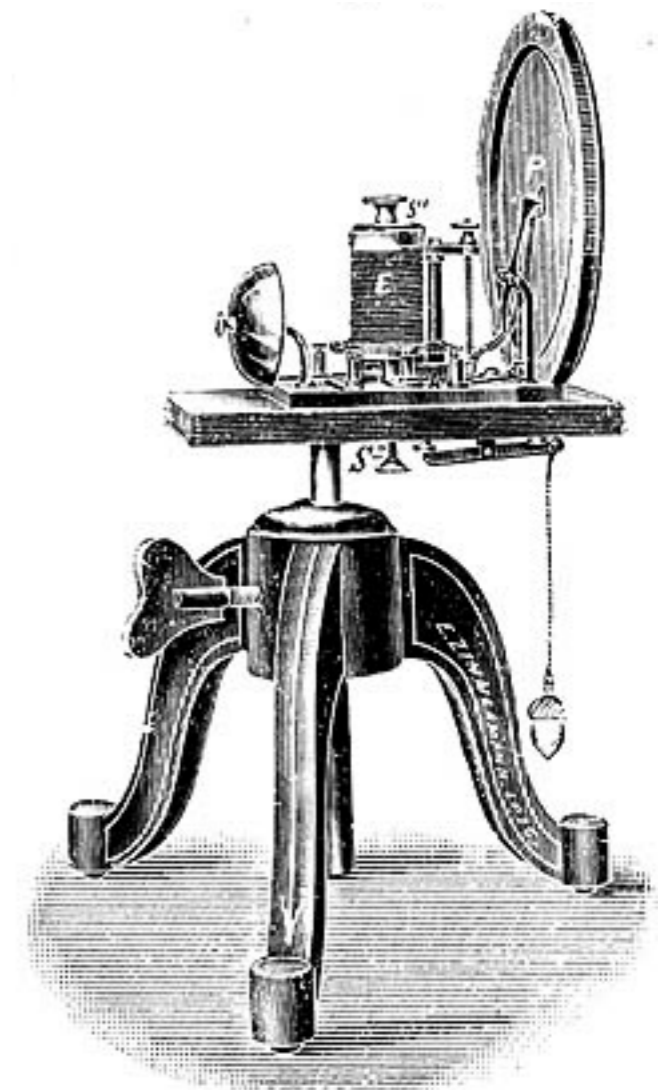
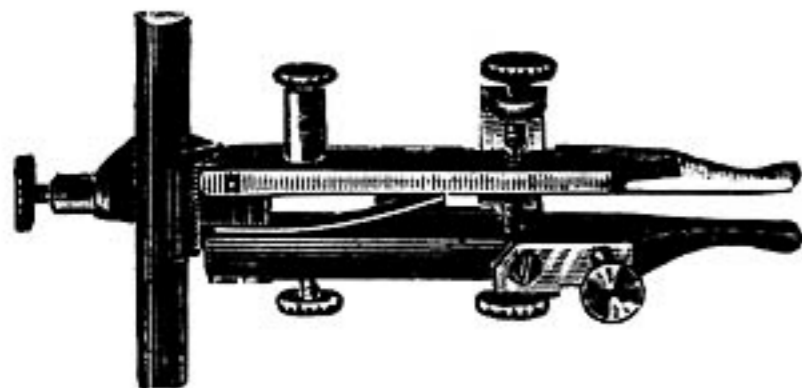
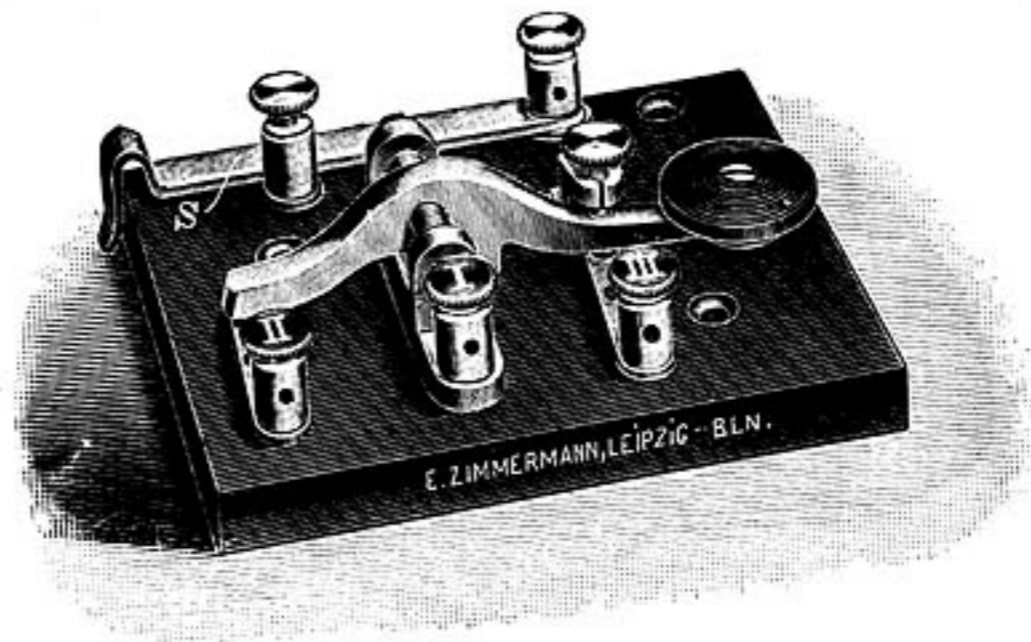
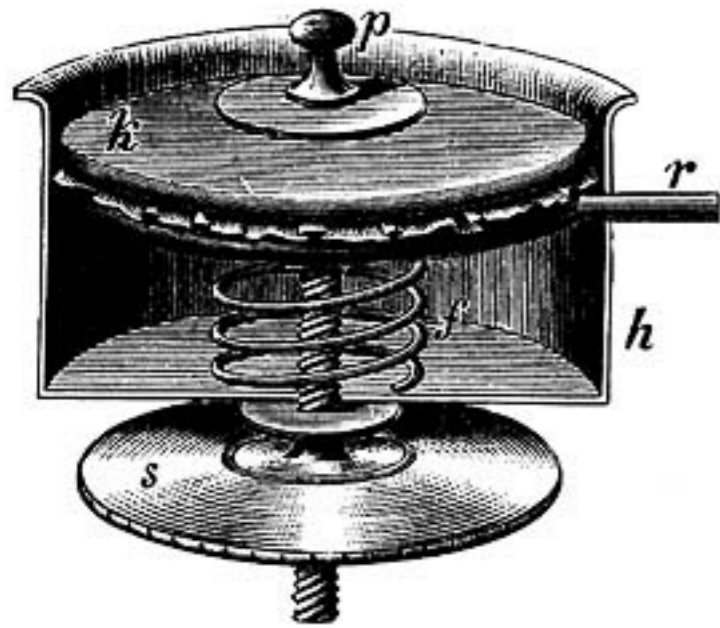
První experimenty: prosinec 1879

První studenti: G. Stanley Hall a Max Friedrich



Max Friedrich disertační práce “Über die Apperceptionsdauer bei zusammengesetzten Vorstellungen” (O trvání apercepce u kombinovanych představ) (Meischner-Metge, 2003)

„Od grafické autoregistrace zvukovým klíčem Roemerovým ve spojení s elektromagnetickým značkovačem a chronografem Jaquetovým bylo upuštěno ...“ (Chmelař, 1935 str. 32).



E. ZIMMERMANN

Apparate für Psychologie, Pädagogik, Physiologie, Psychotechnik, Mikrotome
Apparatus for Psychology, Pedagogy, Physiology, Psychotechnics, Microtomes
Appareils pour Psychologie, Pédagogie, Physiologie, Psychotechnique, Microtomes
Aparatos de Psicologia, Pedagogia, Fisiologia, Psicotécnica, Microtomos

Copyright 1927 - Established 1827 - Re-established in 1927 - Current Edition 1927

LEIPZIG O 27 BERLIN NW 6
Wasserturstraße 33 Kottbuser Str.

Listes free!

Listes forwarded free of charge
Listes gratuites sont envoyées sur demande / Listas a pedido



No. 126
Gedächtnisapparat nach Bismbeck mit Zeiger
Remembrance apparatus with pointer
Appareil pour la mémoire à l'aiguille
Aparato para a memoria com o indicador



No. 127
Rotations-Tachometer
Rotary tachometer
Tachymètre à rotation
Tachímetro de rotación



No. 128
Horizontales Tachometer with Klemm
Horizontal tachometer with clamp
Tachymètre horizontal de Klemm
Tachímetro horizontal de Klemm



No. 129
Tachometer with Schenck-Glass
Tachometer with Schenck-Glass
Tachymètre à Schenck-Glass
Tachímetro à Schenck-Glass



No. 130
Fall-Tachometer
Falling tachometer
Tachymètre à chute
Tachímetro de caída



No. 131
Apparatus with Schenck-Glass
Apparatus with Schenck-Glass
Appareil à Schenck-Glass
Aparato a Schenck-Glass



No. 132
Optical Tachometer
Optical tachometer
Tachymètre optique
Tachímetro óptico



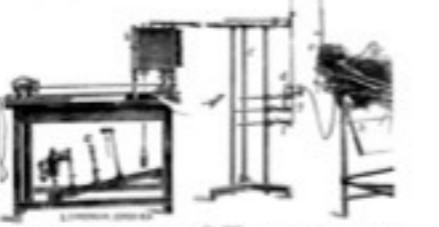
No. 133
Eichhorn Tachometer
Eichhorn tachometer
Tachymètre Eichhorn
Tachímetro Eichhorn



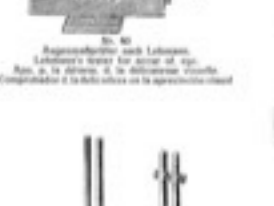
No. 134
Autographischer Zeiger
Autographical pointer
Zeiger autographisch
Zeñador autográfico



No. 135
Anemometer with Sponson
Anemometer with Sponson
Anémomètre à Sponson
Anemómetro a Sponson



No. 136
Lichtmessgerät
Light measuring device
Appareil de mesure de la lumière
Aparato de medida de luz



No. 137
Apparatus with Schenck-Glass
Apparatus with Schenck-Glass
Appareil à Schenck-Glass
Aparato a Schenck-Glass



No. 138
Optical Tachometer
Optical tachometer
Tachymètre optique
Tachímetro óptico



No. 139
Eichhorn Tachometer
Eichhorn tachometer
Tachymètre Eichhorn
Tachímetro Eichhorn



No. 140
Autographischer Zeiger
Autographical pointer
Zeiger autographisch
Zeñador autográfico



No. 141
Anemometer with Sponson
Anemometer with Sponson
Anémomètre à Sponson
Anemómetro a Sponson



No. 142
Lichtmessgerät
Light measuring device
Appareil de mesure de la lumière
Aparato de medida de luz



No. 143
Apparatus with Schenck-Glass
Apparatus with Schenck-Glass
Appareil à Schenck-Glass
Aparato a Schenck-Glass



No. 144
Optical Tachometer
Optical tachometer
Tachymètre optique
Tachímetro óptico



No. 145
Eichhorn Tachometer
Eichhorn tachometer
Tachymètre Eichhorn
Tachímetro Eichhorn



No. 146
Autographischer Zeiger
Autographical pointer
Zeiger autographisch
Zeñador autográfico



No. 147
Anemometer with Sponson
Anemometer with Sponson
Anémomètre à Sponson
Anemómetro a Sponson



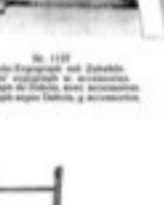
No. 148
Lichtmessgerät
Light measuring device
Appareil de mesure de la lumière
Aparato de medida de luz



No. 149
Apparatus with Schenck-Glass
Apparatus with Schenck-Glass
Appareil à Schenck-Glass
Aparato a Schenck-Glass



No. 150
Optical Tachometer
Optical tachometer
Tachymètre optique
Tachímetro óptico



No. 151
Eichhorn Tachometer
Eichhorn tachometer
Tachymètre Eichhorn
Tachímetro Eichhorn



No. 152
Autographischer Zeiger
Autographical pointer
Zeiger autographisch
Zeñador autográfico



No. 153
Anemometer with Sponson
Anemometer with Sponson
Anémomètre à Sponson
Anemómetro a Sponson



No. 154
Lichtmessgerät
Light measuring device
Appareil de mesure de la lumière
Aparato de medida de luz



No. 155
Apparatus with Schenck-Glass
Apparatus with Schenck-Glass
Appareil à Schenck-Glass
Aparato a Schenck-Glass



No. 156
Optical Tachometer
Optical tachometer
Tachymètre optique
Tachímetro óptico



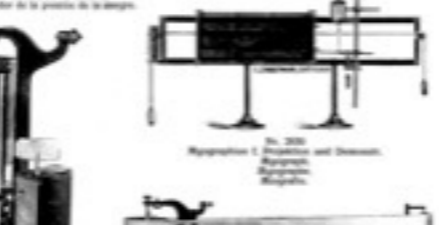
No. 157
Eichhorn Tachometer
Eichhorn tachometer
Tachymètre Eichhorn
Tachímetro Eichhorn



No. 158
Autographischer Zeiger
Autographical pointer
Zeiger autographisch
Zeñador autográfico



No. 159
Anemometer with Sponson
Anemometer with Sponson
Anémomètre à Sponson
Anemómetro a Sponson



No. 160
Lichtmessgerät
Light measuring device
Appareil de mesure de la lumière
Aparato de medida de luz



No. 161
Apparatus with Schenck-Glass
Apparatus with Schenck-Glass
Appareil à Schenck-Glass
Aparato a Schenck-Glass



No. 162
Optical Tachometer
Optical tachometer
Tachymètre optique
Tachímetro óptico



No. 163
Eichhorn Tachometer
Eichhorn tachometer
Tachymètre Eichhorn
Tachímetro Eichhorn



No. 164
Autographischer Zeiger
Autographical pointer
Zeiger autographisch
Zeñador autográfico



No. 165
Anemometer with Sponson
Anemometer with Sponson
Anémomètre à Sponson
Anemómetro a Sponson



No. 166
Lichtmessgerät
Light measuring device
Appareil de mesure de la lumière
Aparato de medida de luz



No. 167
Apparatus with Schenck-Glass
Apparatus with Schenck-Glass
Appareil à Schenck-Glass
Aparato a Schenck-Glass



No. 168
Optical Tachometer
Optical tachometer
Tachymètre optique
Tachímetro óptico



No. 169
Eichhorn Tachometer
Eichhorn tachometer
Tachymètre Eichhorn
Tachímetro Eichhorn



No. 170
Autographischer Zeiger
Autographical pointer
Zeiger autographisch
Zeñador autográfico



No. 171
Anemometer with Sponson
Anemometer with Sponson
Anémomètre à Sponson
Anemómetro a Sponson



No. 172
Zylinder Chronograph with Linsen
Cylinder chronograph with lenses
Chronographe cylindrique à lentilles
Cronógrafo cilíndrico de lentes



No. 173
Kontrollier für große Intervalle
Control clock for large intervals
Horloge à grands intervalles
Relógio de grandes intervalos



No. 174
Electromagnet Chronograph
Electromagnet chronograph
Chronographe électromagnétique
Cronógrafo electromagnético



No. 175
Chronometer on portable support
Chronometer with portable support
Chronographe sur support portable
Cronógrafo em suporte portátil



No. 176
Reversier-Chronograph
Reversible chronograph
Chronographe réversible
Cronógrafo reversível



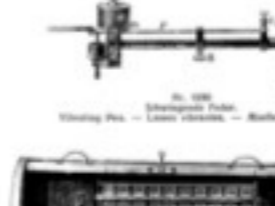
No. 177
Gedächtnisapparat
Remembrance apparatus
Appareil de mémoire
Aparato de memoria



No. 178
Universal Chronograph
Universal chronograph
Chronographe universel
Cronógrafo universal



No. 179
Spring Chronograph
Spring chronograph
Chronographe à ressort
Cronógrafo de mola



No. 180
Spring Chronograph
Spring chronograph
Chronographe à ressort
Cronógrafo de mola



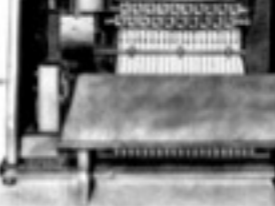
No. 181
Universal Chronograph
Universal chronograph
Chronographe universel
Cronógrafo universal



No. 182
Spring Chronograph
Spring chronograph
Chronographe à ressort
Cronógrafo de mola



No. 183
Spring Chronograph
Spring chronograph
Chronographe à ressort
Cronógrafo de mola



No. 184
Spring Chronograph
Spring chronograph
Chronographe à ressort
Cronógrafo de mola



No. 185
Spring Chronograph
Spring chronograph
Chronographe à ressort
Cronógrafo de mola



No. 186
Spring Chronograph
Spring chronograph
Chronographe à ressort
Cronógrafo de mola



No. 187
Spring Chronograph
Spring chronograph
Chronographe à ressort
Cronógrafo de mola



No. 188
Spring Chronograph
Spring chronograph
Chronographe à ressort
Cronógrafo de mola



No. 189
Spring Chronograph
Spring chronograph
Chronographe à ressort
Cronógrafo de mola



No. 190
Spring Chronograph
Spring chronograph
Chronographe à ressort
Cronógrafo de mola



No. 191
Spring Chronograph
Spring chronograph
Chronographe à ressort
Cronógrafo de mola



No. 192
Spring Chronograph
Spring chronograph
Chronographe à ressort
Cronógrafo de mola



No. 193
Spring Chronograph
Spring chronograph
Chronographe à ressort
Cronógrafo de mola



No. 194
Spring Chronograph
Spring chronograph
Chronographe à ressort
Cronógrafo de mola



No. 195
Spring Chronograph
Spring chronograph
Chronographe à ressort
Cronógrafo de mola



No. 196
Spring Chronograph
Spring chronograph
Chronographe à ressort
Cronógrafo de mola



No. 197
Spring Chronograph
Spring chronograph
Chronographe à ressort
Cronógrafo de mola



No. 198
Spring Chronograph
Spring chronograph
Chronographe à ressort
Cronógrafo de mola



No. 199
Spring Chronograph
Spring chronograph
Chronographe à ressort
Cronógrafo de mola



No. 200
Spring Chronograph
Spring chronograph
Chronographe à ressort
Cronógrafo de mola



No. 201
Spring Chronograph
Spring chronograph
Chronographe à ressort
Cronógrafo de mola



No. 202
Spring Chronograph
Spring chronograph
Chronographe à ressort
Cronógrafo de mola



No. 203
Spring Chronograph
Spring chronograph
Chronographe à ressort
Cronógrafo de mola

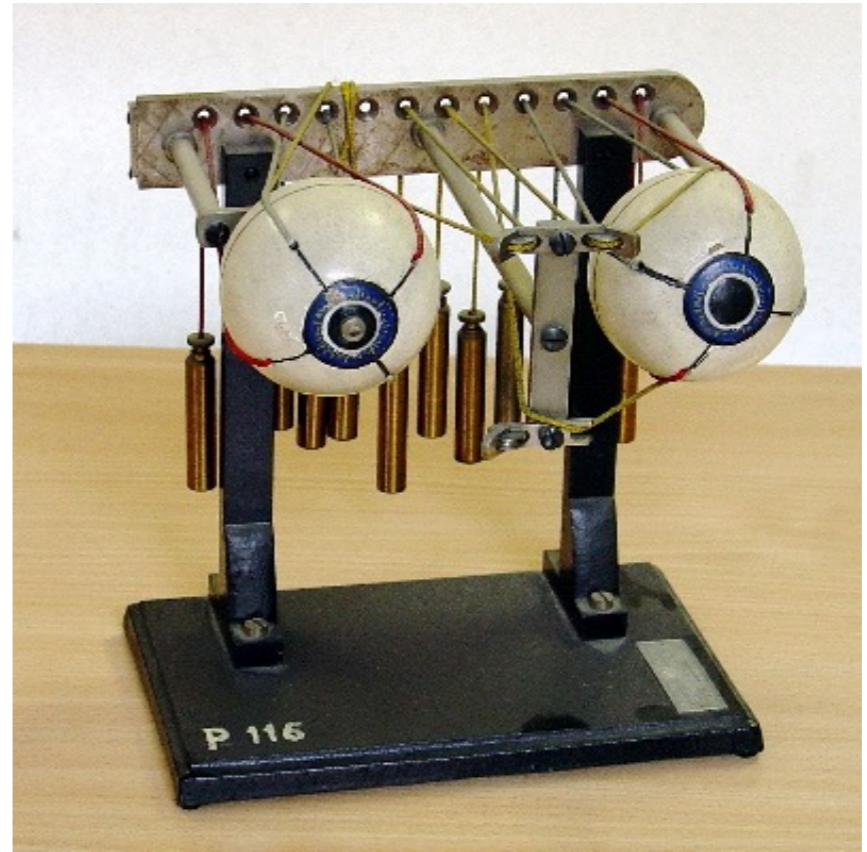
Pražská kolekce



založeno 1912

obsahuje 70 přístrojů

časové období:
~ 1895-1930



*Ophthalmotrope (Model of the muscles
of the eye)*

Brněnská kolekce



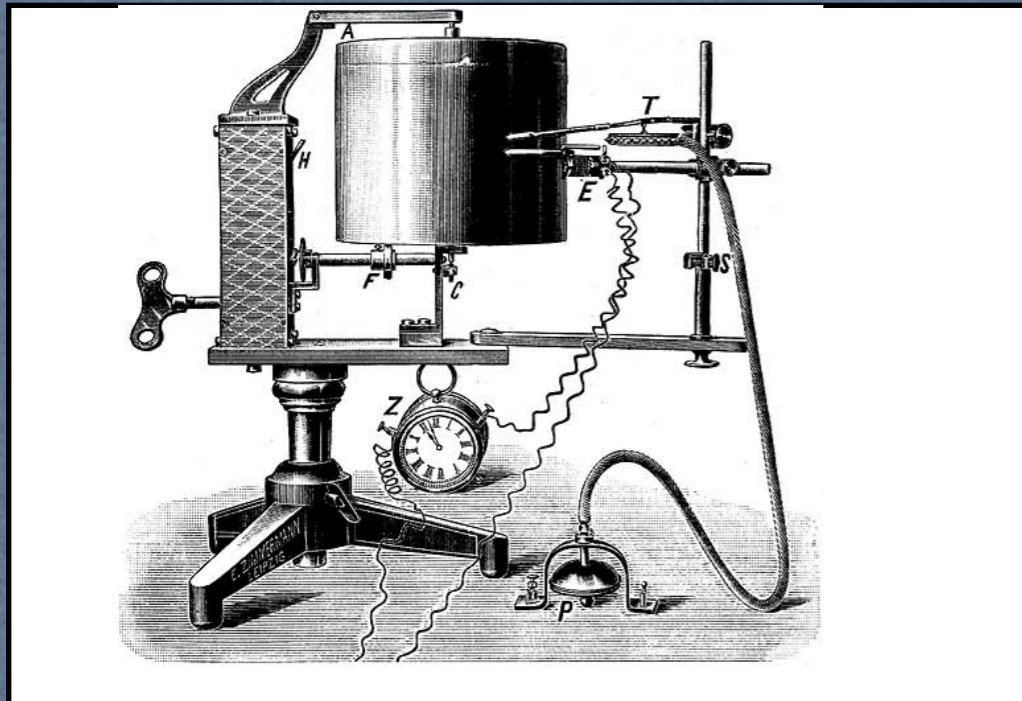
založeno 1926

obsahuje 75 přístrojů

časové období:
~ 1895-1930



finanční náročnost vybavení



375 M

=



Preis des Gesamt-Apparates: Optischer Apparat, Metronom,

Taster mit Schalter, Leitungen	Mk. 160.—
Akkumulator mit 2 Zellen	„ 56.—
3 Cupron-Elemente	„ 18.—
23 Reizkarten nach Ranschburg zur Untersuchung der Auffassung, Association und des Gedächtnisses	ca. „ 25.—
50 unbedruckte Reizkarten zur Selbstanfertigung	„ 7.50

Für psychophysische Zeitmessungen können geliefert werden:

Chronoskop nach Hipp	„ 310.—
Rheochord	„ 22.—
Kontrollapparate	Mk. 60.— bis „ 325.—
Wippe	„ 10.—
Reaktions-Taster	Mk. 15.— bis „ 35.—
Akustischer Reiz- und Reaktionsapparat, sogen. Schallschlüssel nach Römer	„ 80.—

1049 M

=





Univerzální kymograf



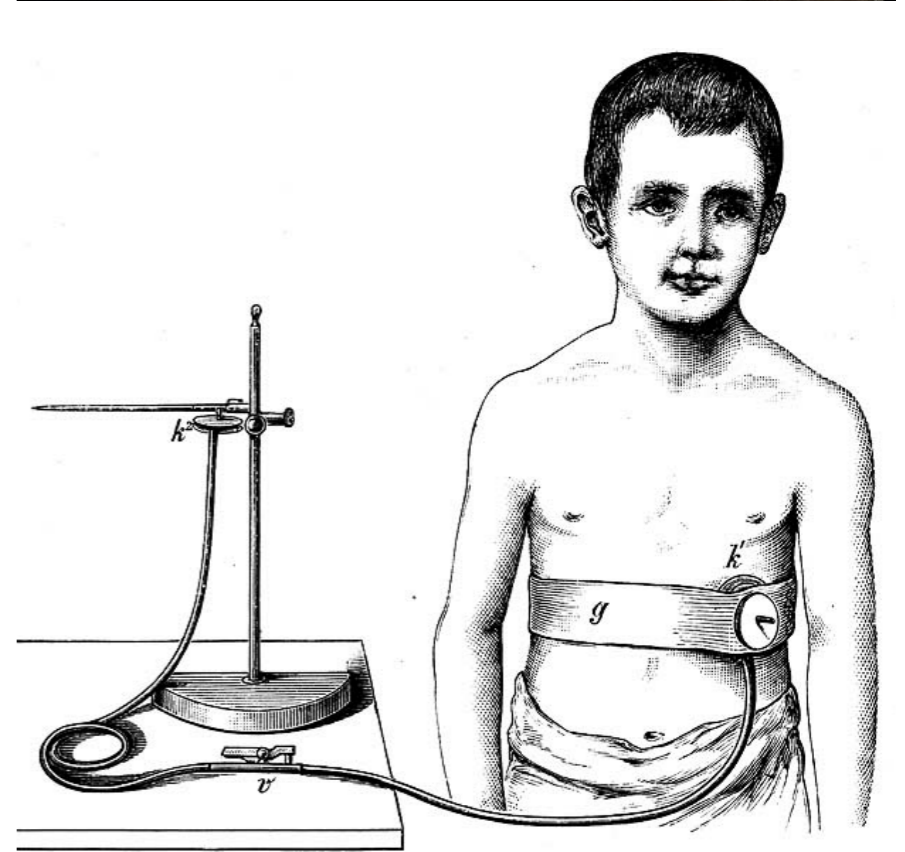
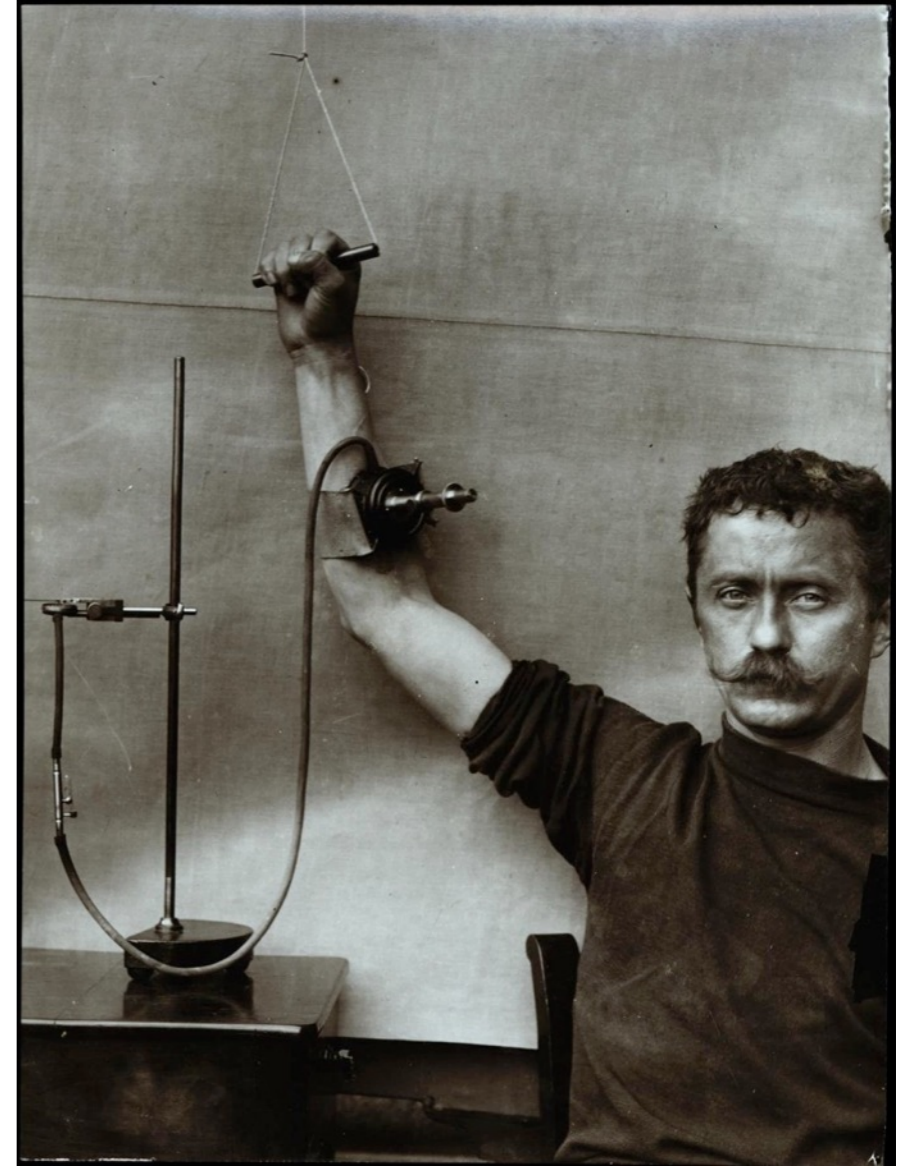
Lahvové varhany

Vodítka:

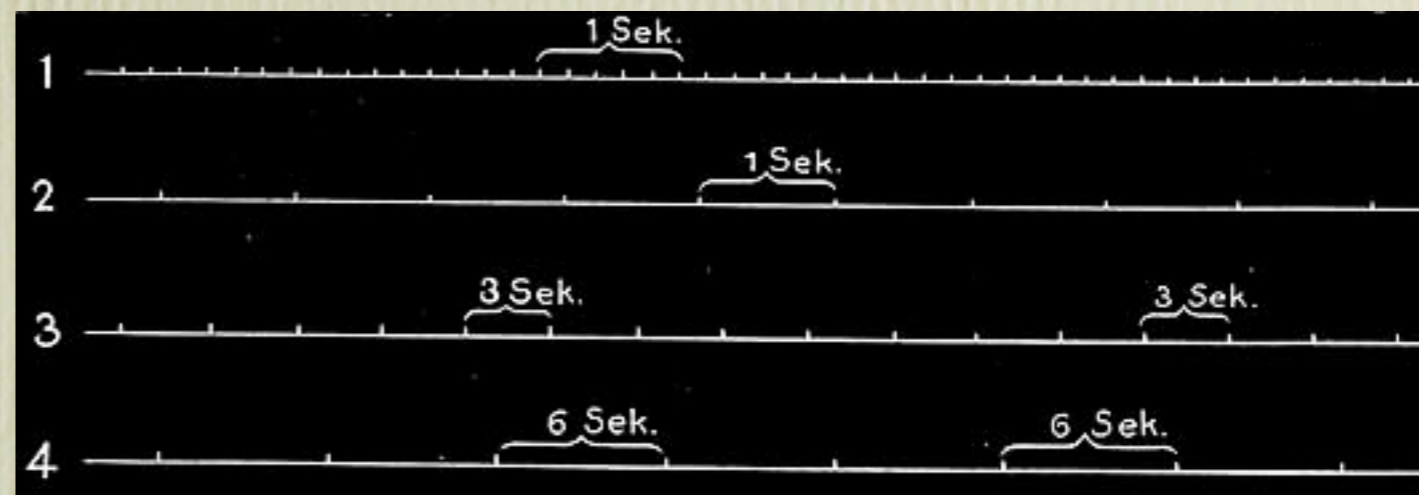
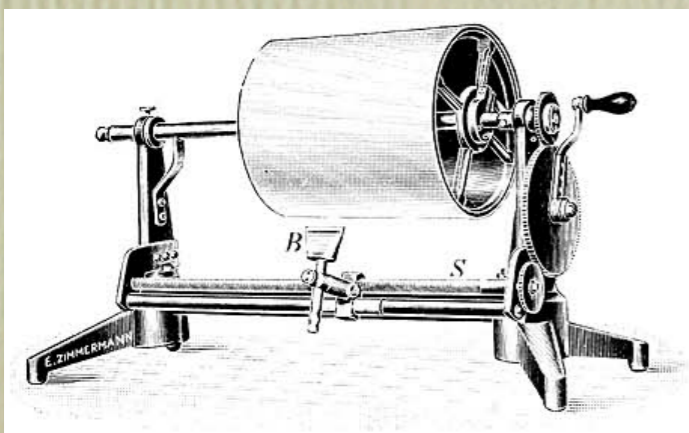
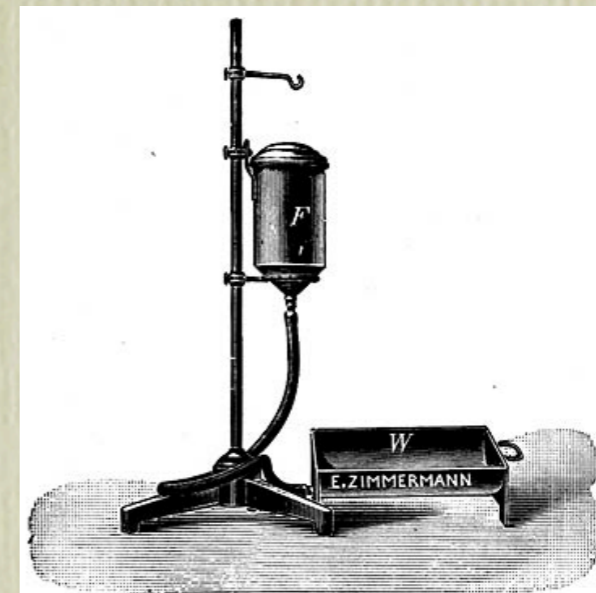
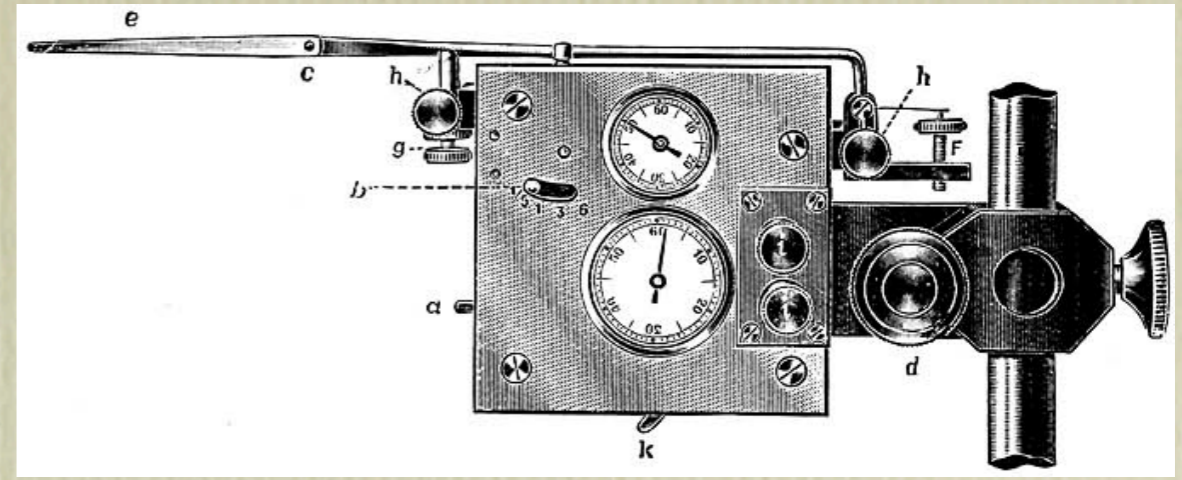
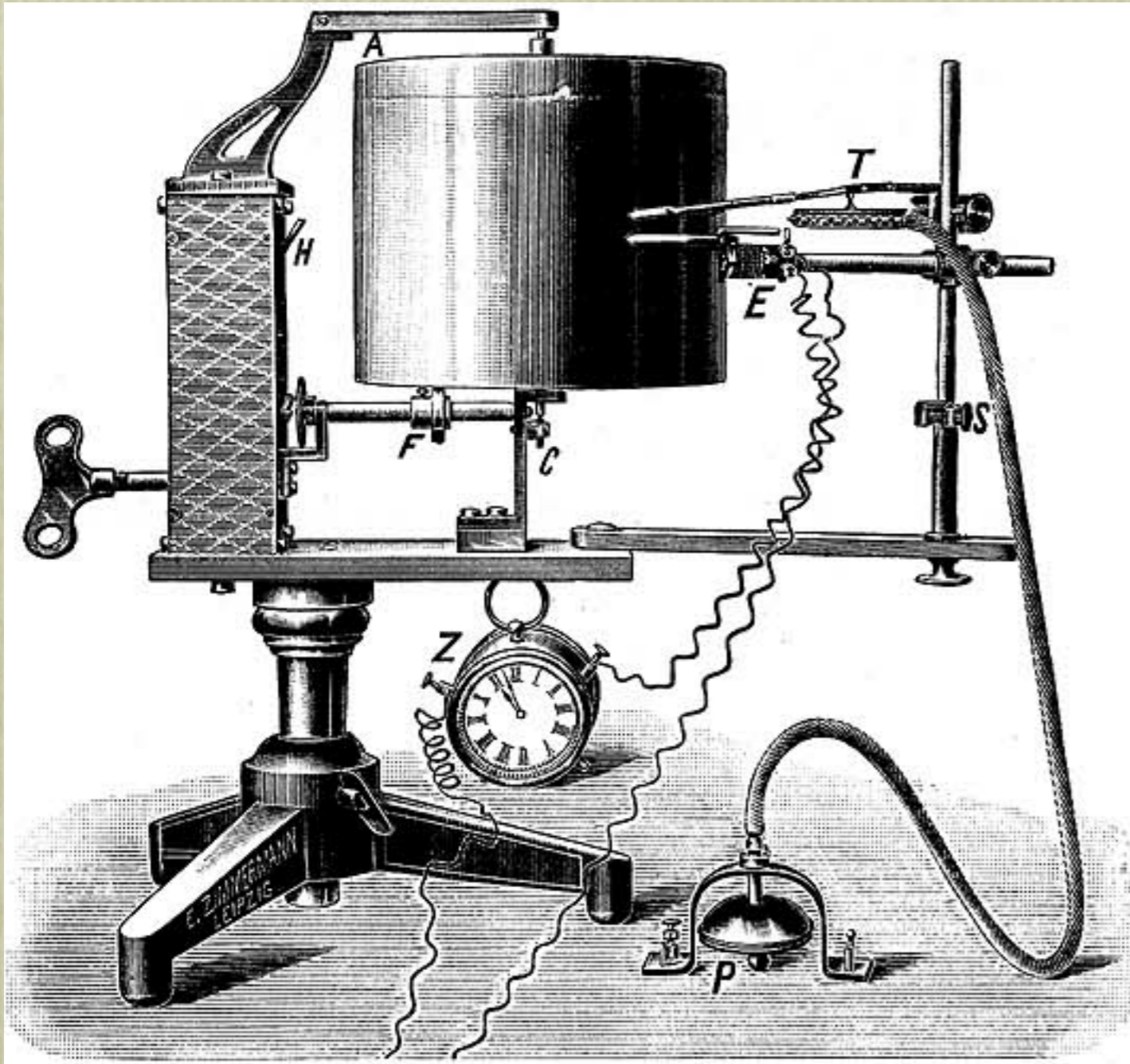
- ⇒ štítky s rozdílným dekorem “Zimmermannova” loga
- ⇒ font užitý pro popis jednotlivých částí přístroje (stupnice, etc.)
- ⇒ výrobní detaily (dekorace, materiál, etc.)

Jednotlivé “time-points”:

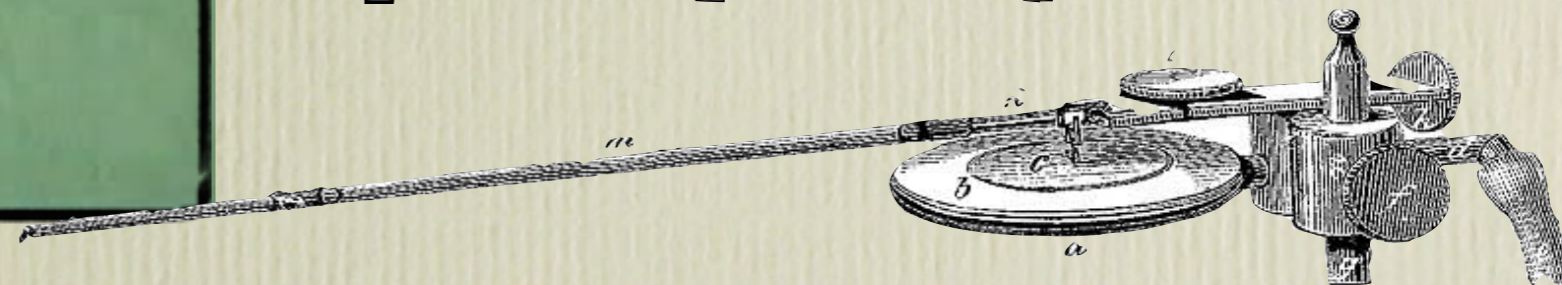
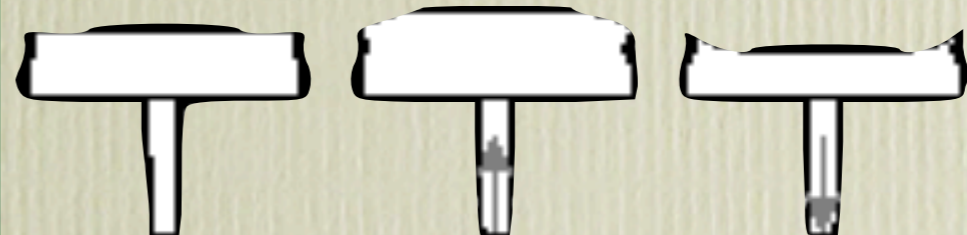
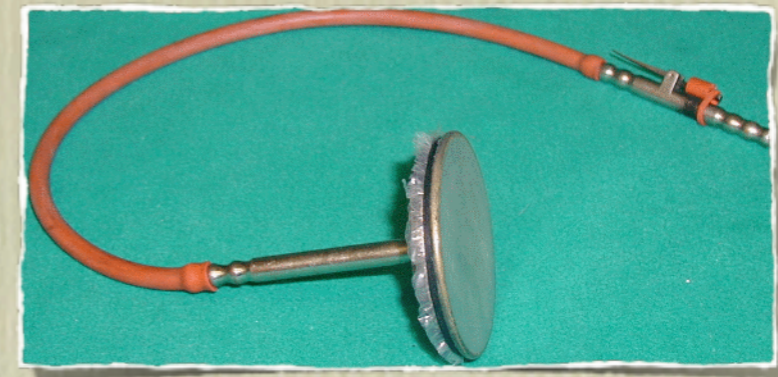
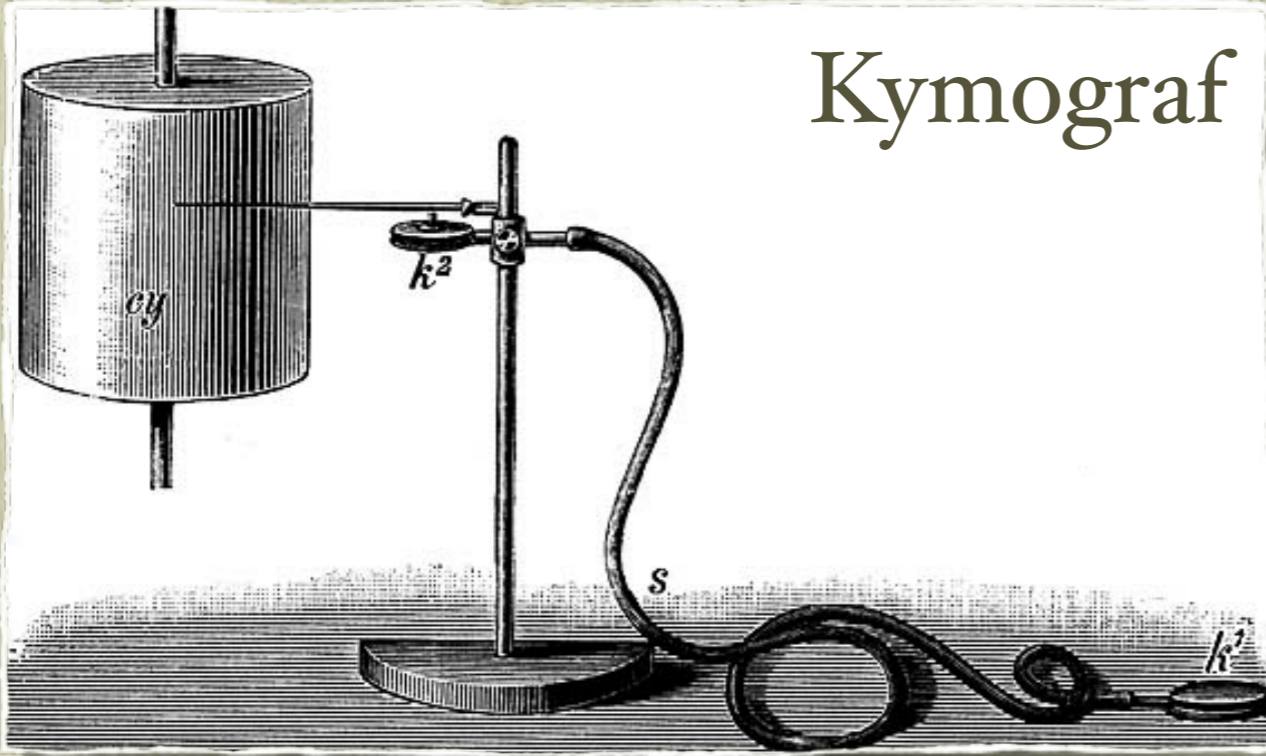
1894	Emilienstrasse 21, Leipzig		
1905	Emilien-Strasse 21, Leipzig		
1912	Emilienstr. 21, Leipzig	Chausseestr. 6, Berlin N4	
1921	Roscher-Straße 23, Leipzig	Charité-straße 9, Berlin	
1922	Wasserturmstraße. 33, Leipzig	Charitéstraße 9, Berlin	
1928	Wasserturmstraße. 33, Leipzig	Karlstraße 5a, Berlin	



Kymograf



Kymograf



problematika přípravy záznamového zařízení:

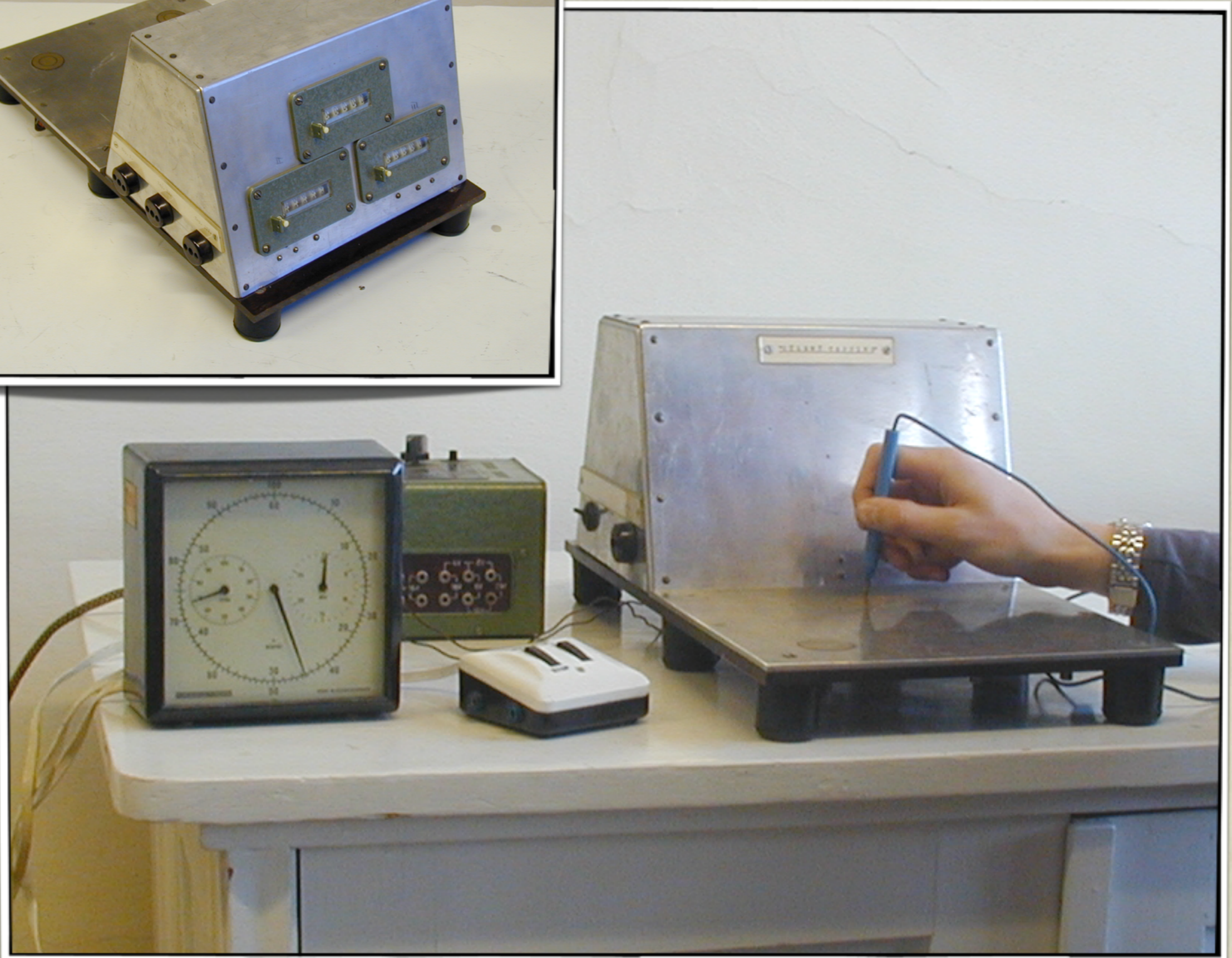
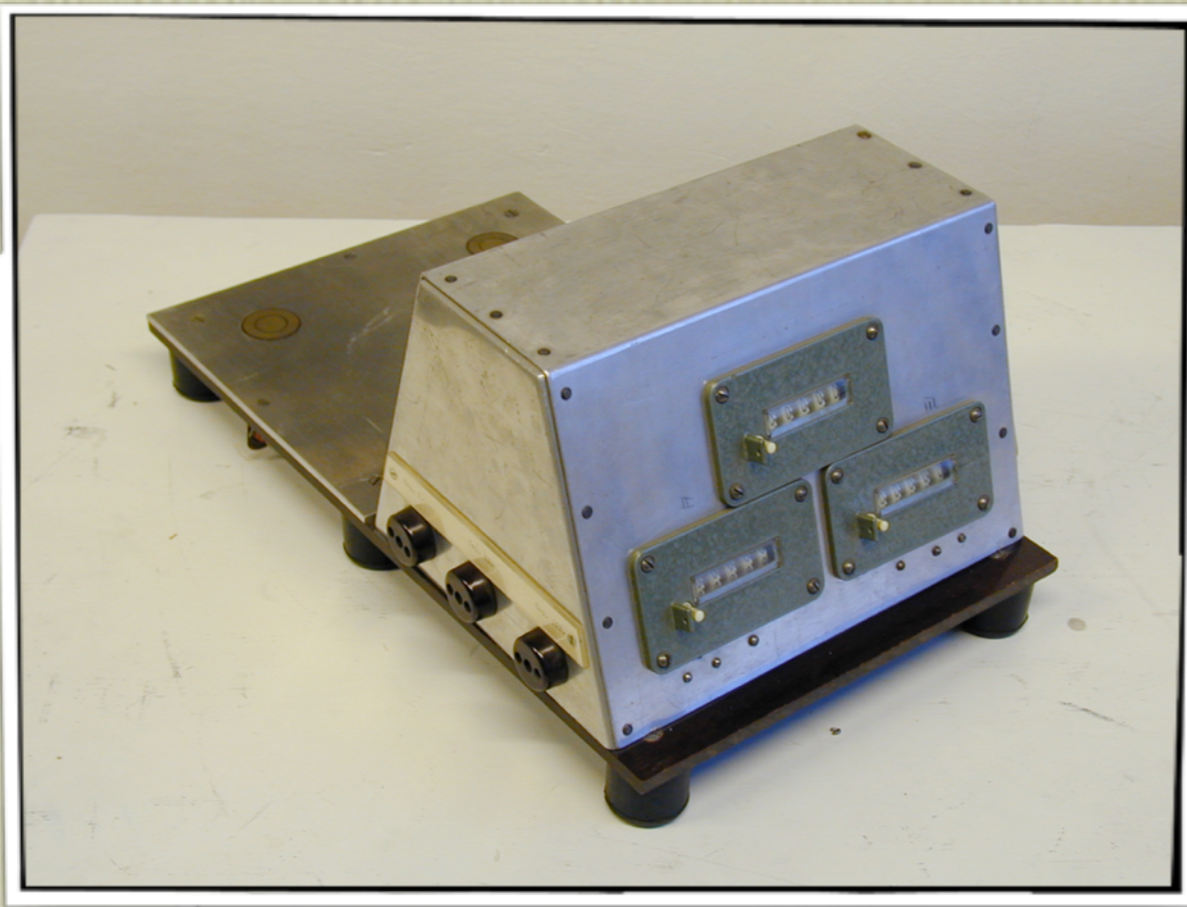
Ø čas potřebný k získání údajů při použití kymografu

- příprava kymografu - 25 minut
- záznam experimentu - 2 minuty
- fixace záznamu lakem a jeho zaschnutí - 6 hodin
- získání údajů ze záznamu - 13 minut

Ø čas potřebný k získání údajů při použití PC a tabletu

- záznam experimentu - 2 minuty
- získání dat ze záznamu - 13 vteřin

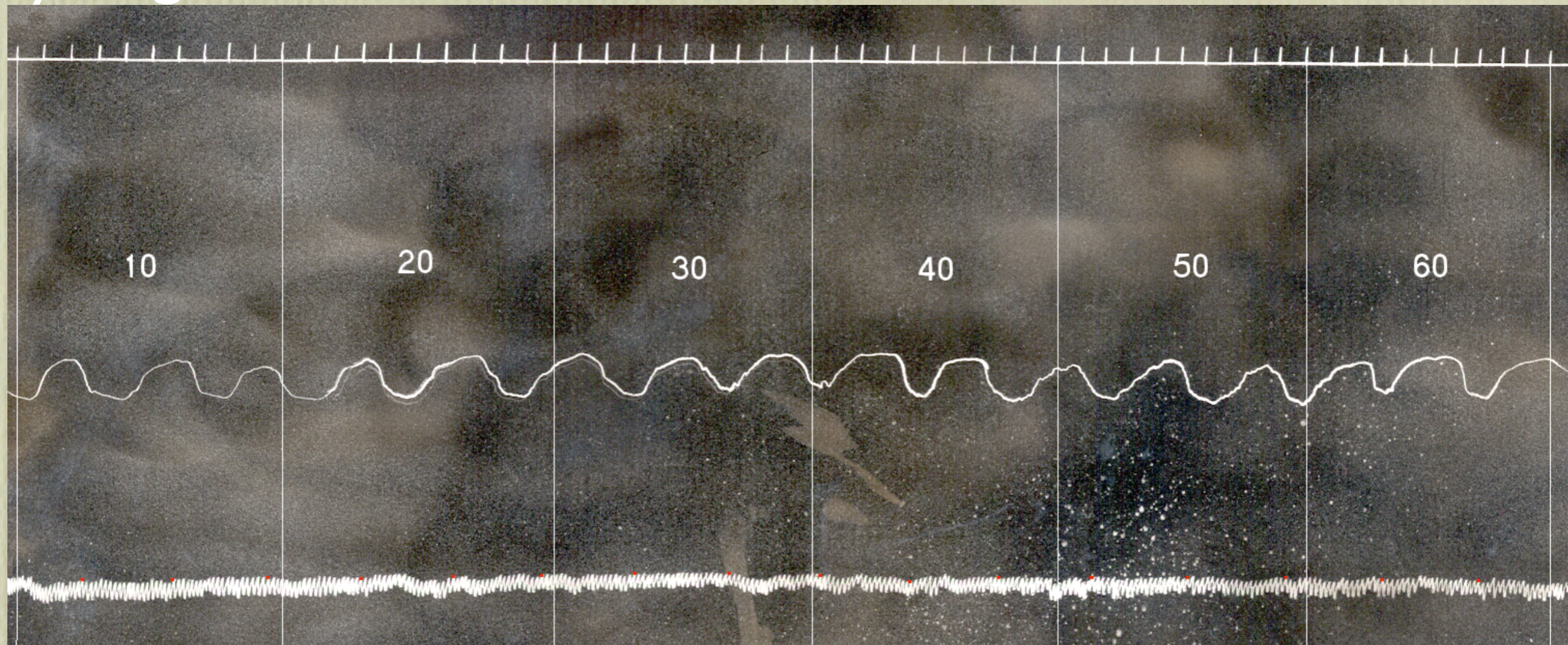




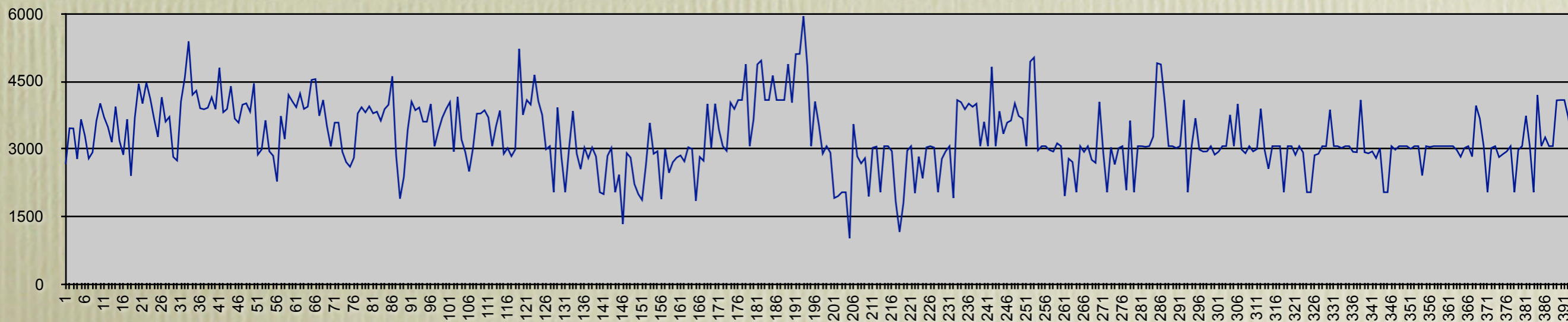




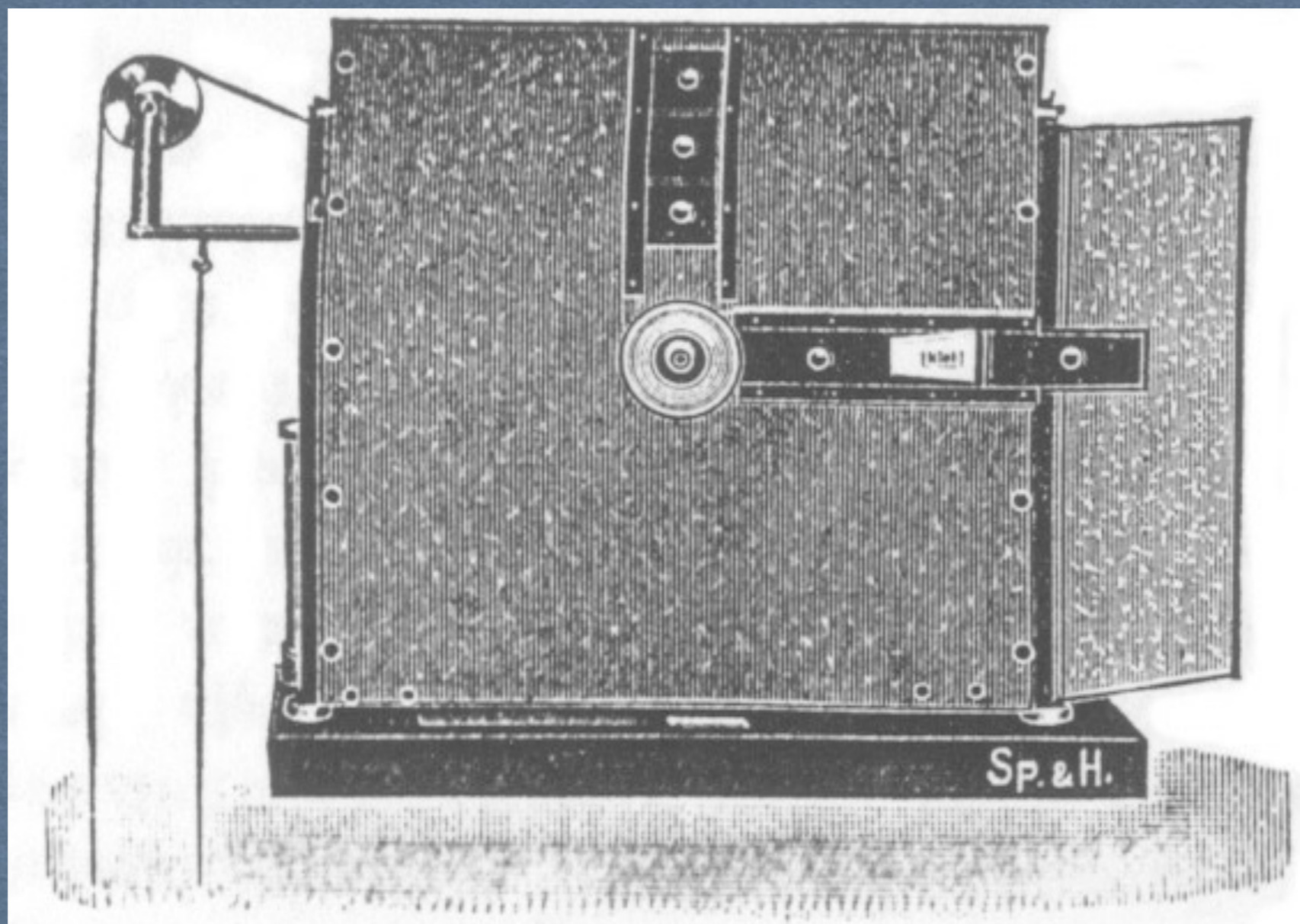
Kymograf

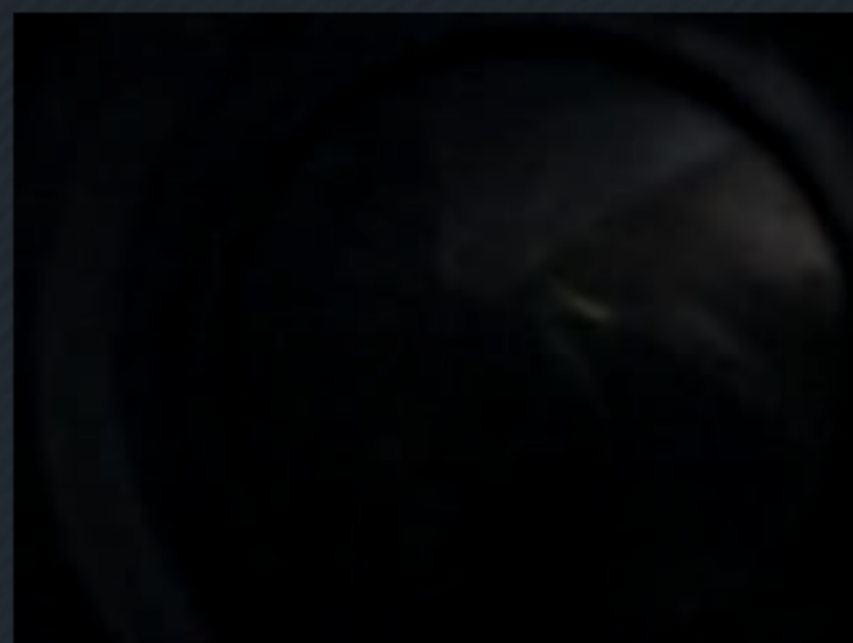
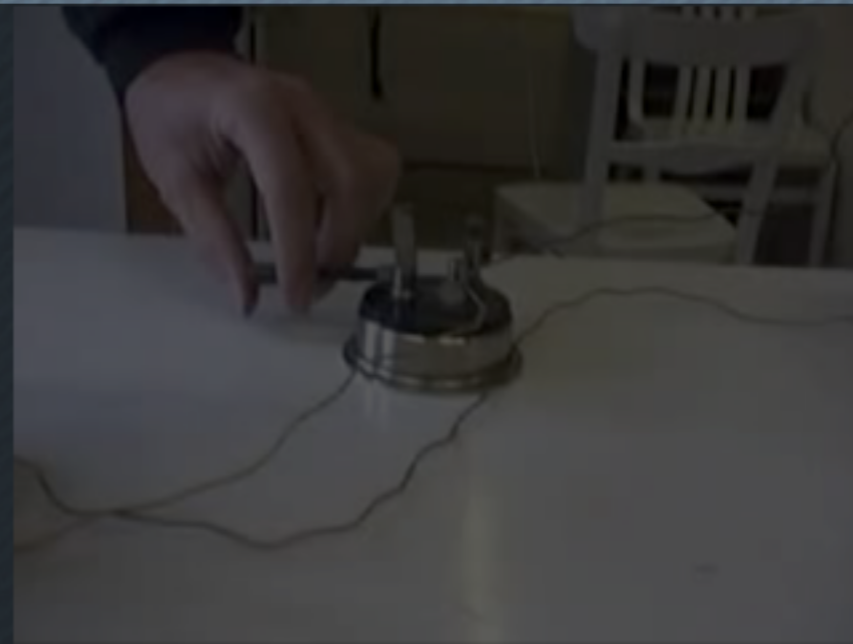


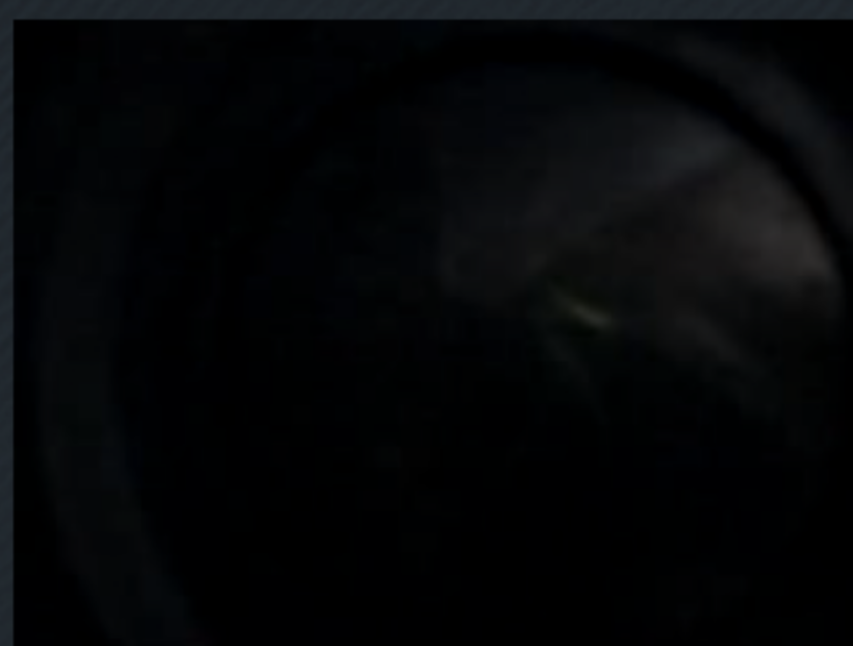
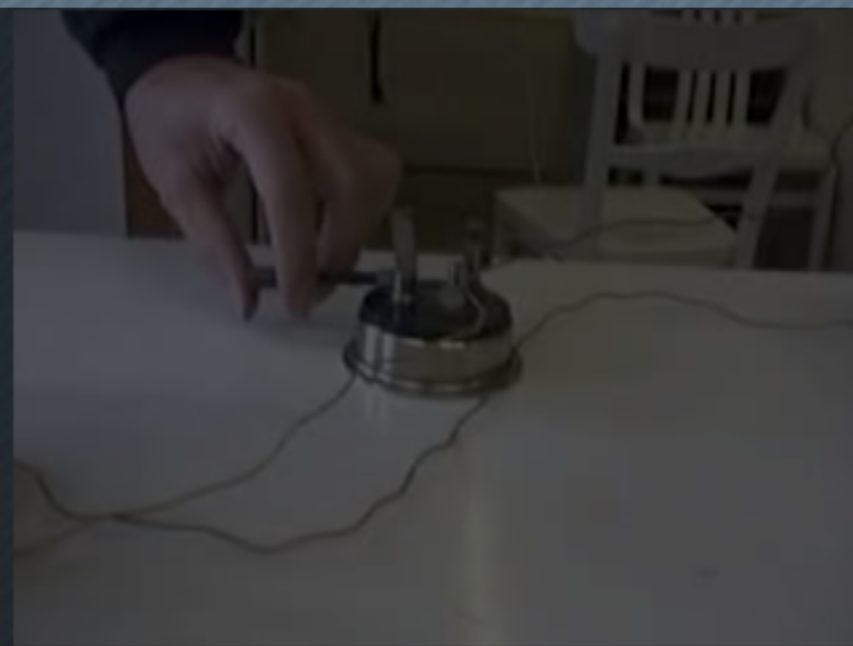
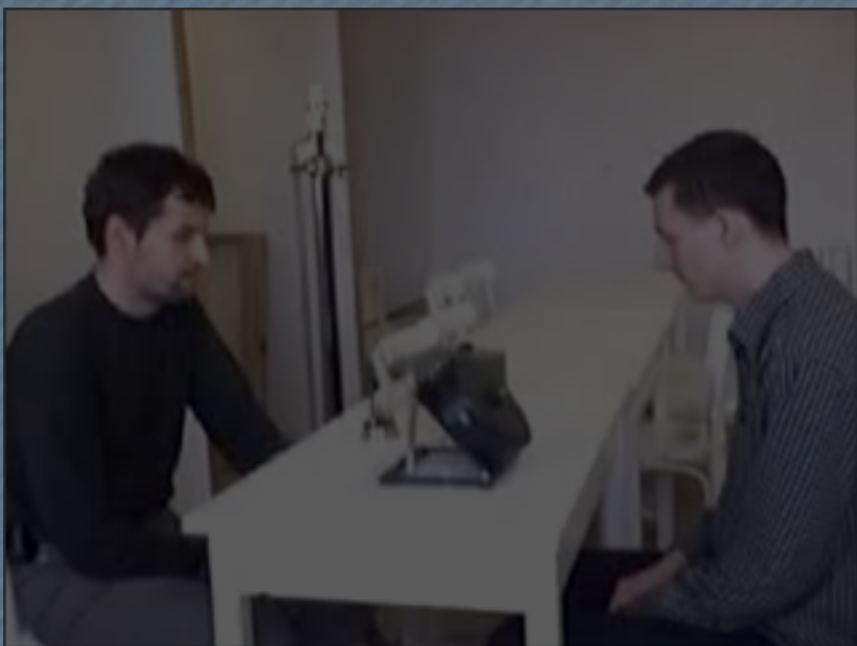
Tablet



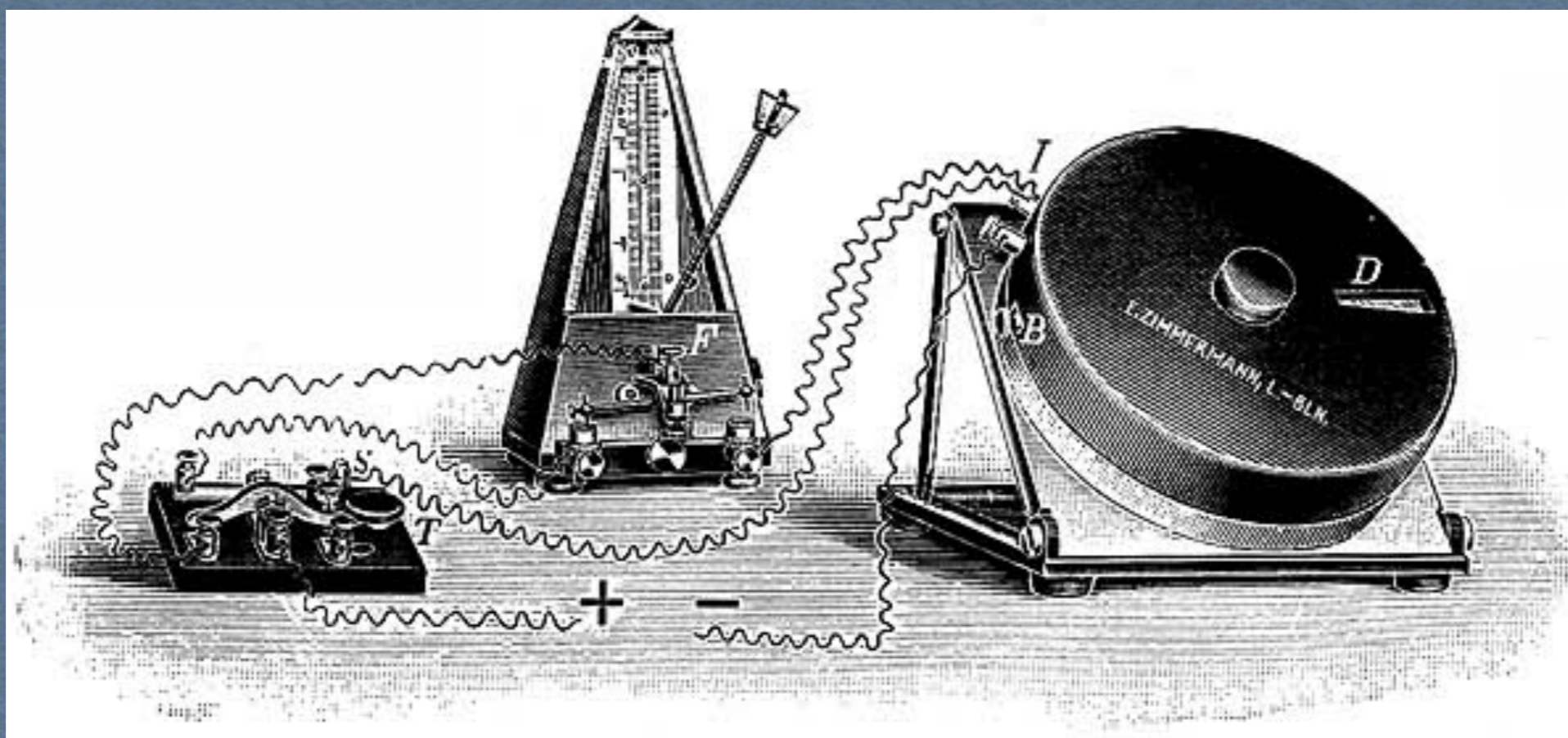
Asociační zařízení (Meier, H.)

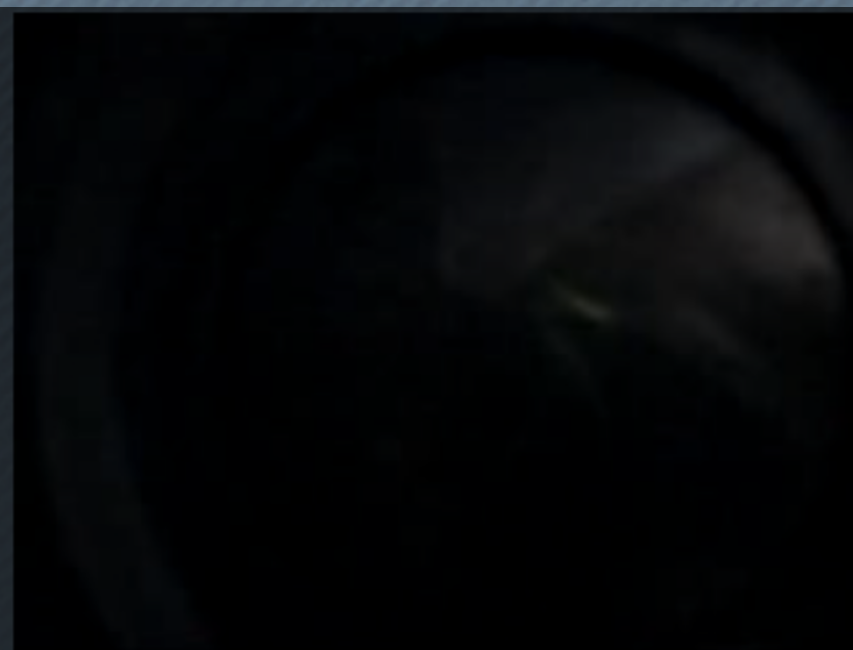
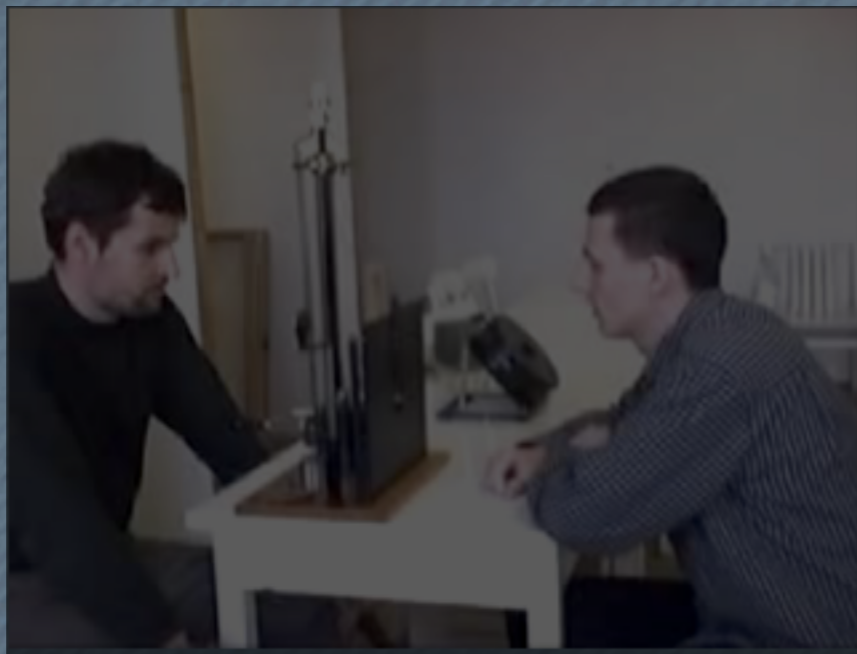


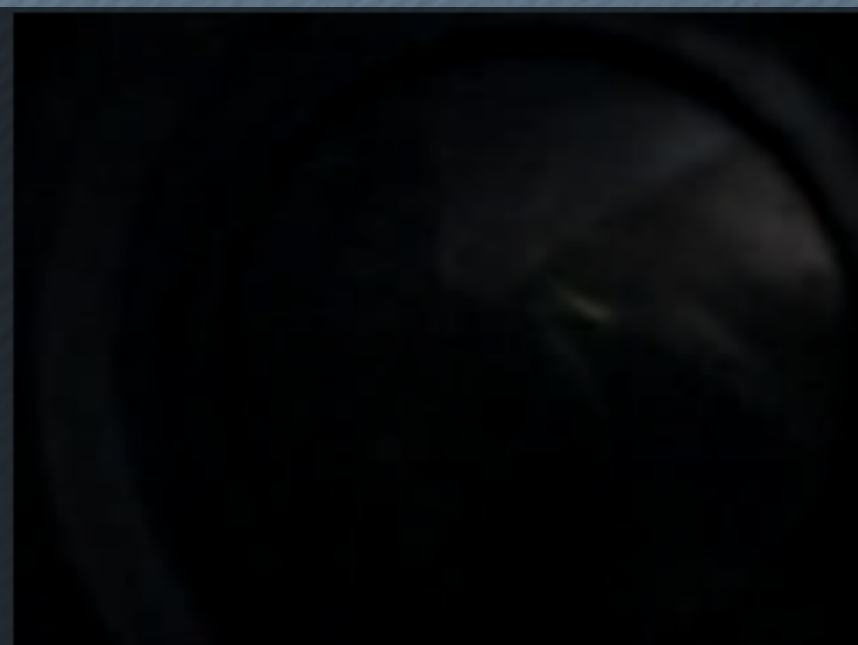
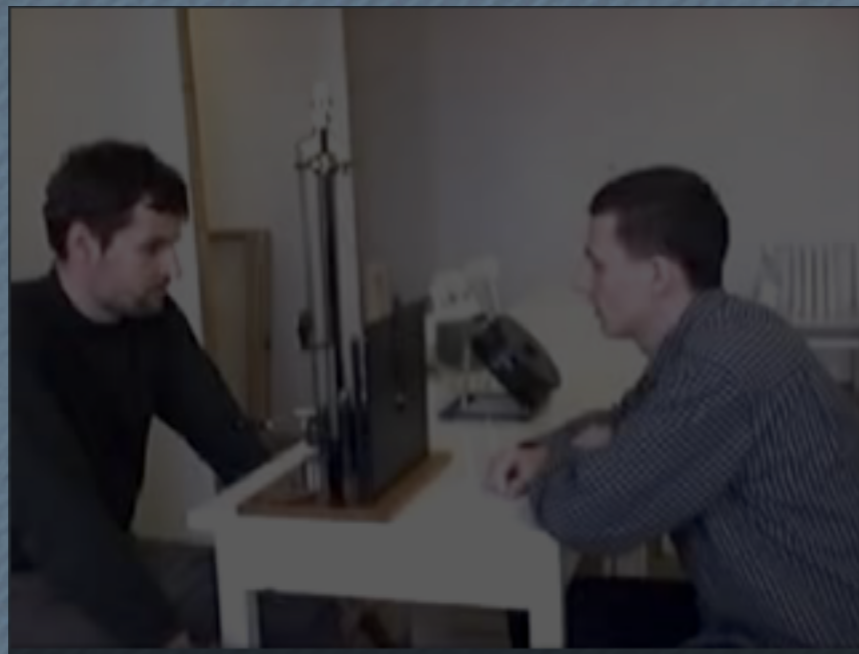




Ranschburgův mnemometr







Tachistoskop (Rostohar, M.)



