

THE EARLY BRONZE AGE IN THE NEAR EAST

Material culture of
the Early Bronze Age
Southern Mesopotamia





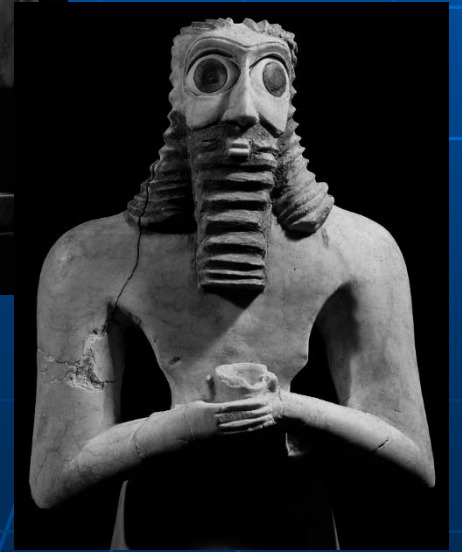
ANZU BIRD

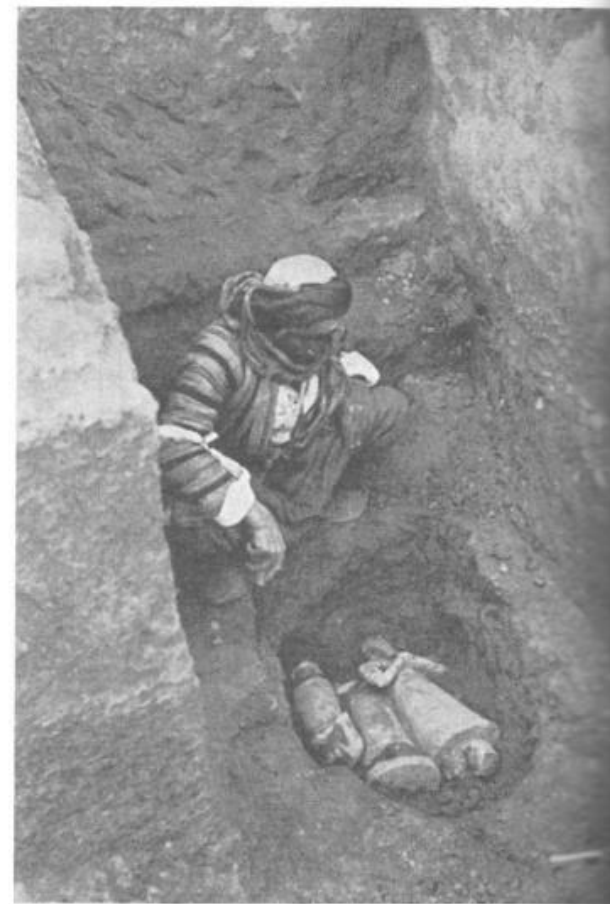
ETANA – THE SHEPARD KING OF KISH
RECORDED IN THE SUMERIAN KING
LIST

CYLINDER SEAL IMPRESSION
DEPICTING ETANA MYTH



EARLY DYNASTIC VOTIVE STATUES FROM ESHNUNNA (Tell Asmar, Diyala)





b



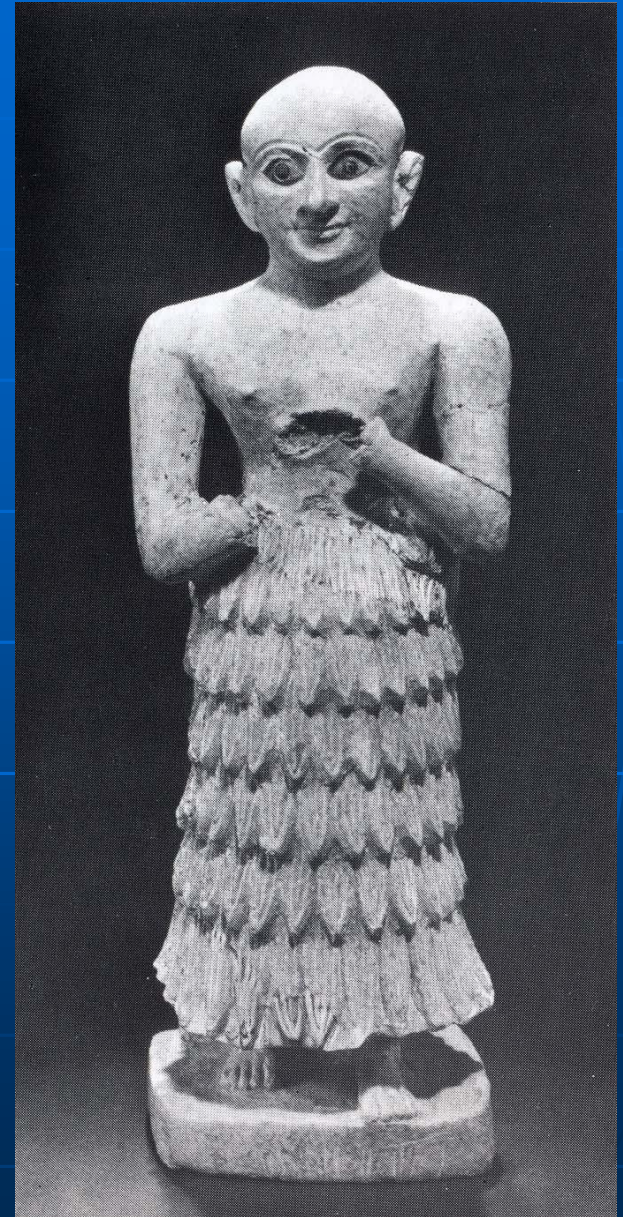
niennych naczyń) pochodzących z okresu wczesno-
dynastycznego¹¹². Wśród nich są również figurki wo-
wne z inskrypcjami ku czci bogini¹¹³.

Z obszaru temenosu świątyni Owalnej pochodzi
edemdziesiąt sześć fragmentów kamiennych posążków
otywnych¹¹⁴. Nie znaleziono żadnej *favissy*; wszystkie
atuetki orantów są zniszczone i niekompletne. Z pew-
nością w momencie znalezienia nie znajdowały się
pierwotnym kontekście, jednak tak duża liczba znale-
sk przemawia za tym, że stanowiły element wyposaże-
nia świątyni. Fragmenty te zostały odkryte na dziedzińcu
w niektórych pomieszczeniach, ale ich dystrybucja nie
jest równomierna; nie ma ich prawie wcale w pomieszczeniach

EARLY DYNASTIC VOTIVE STATUES FROM (TELL AGRAB, Diyala)



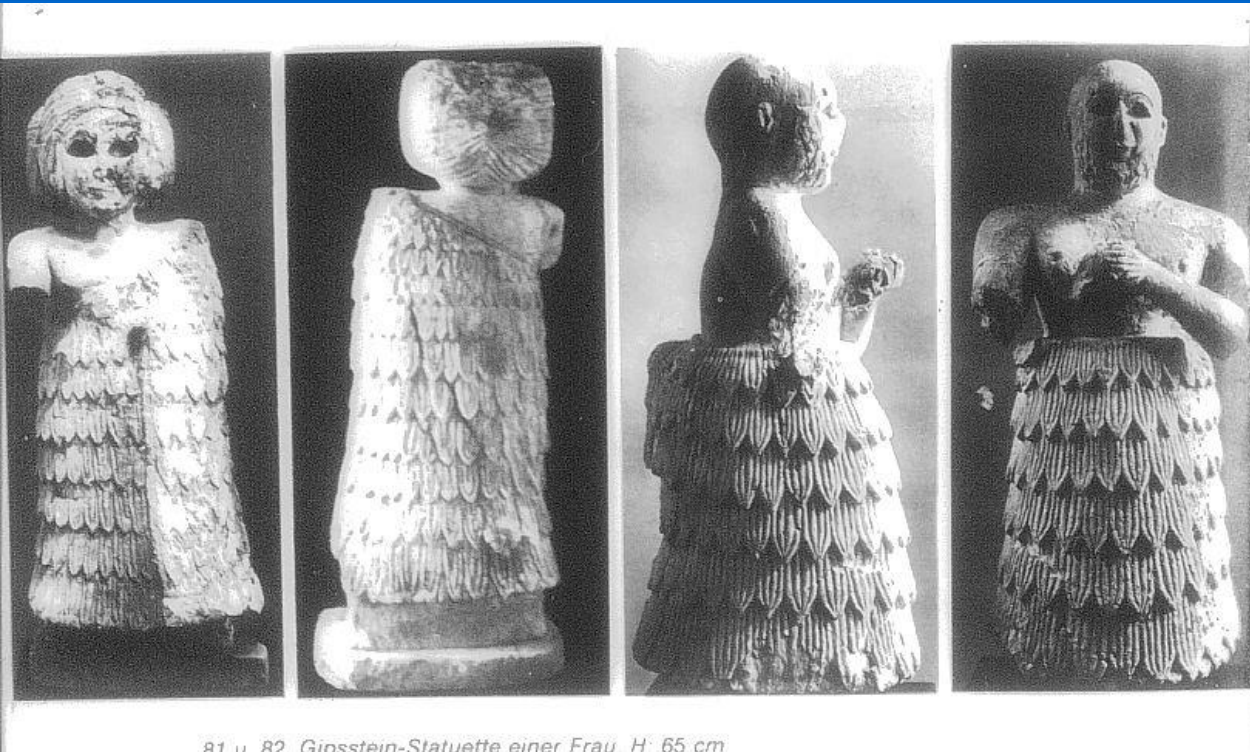
EARLY DYNASTIC VOTIVE STATUES – KHAFAJE, Diyala



EARLY DYNASTIC VOTIVE STATUES – NIPPUR, Sumer



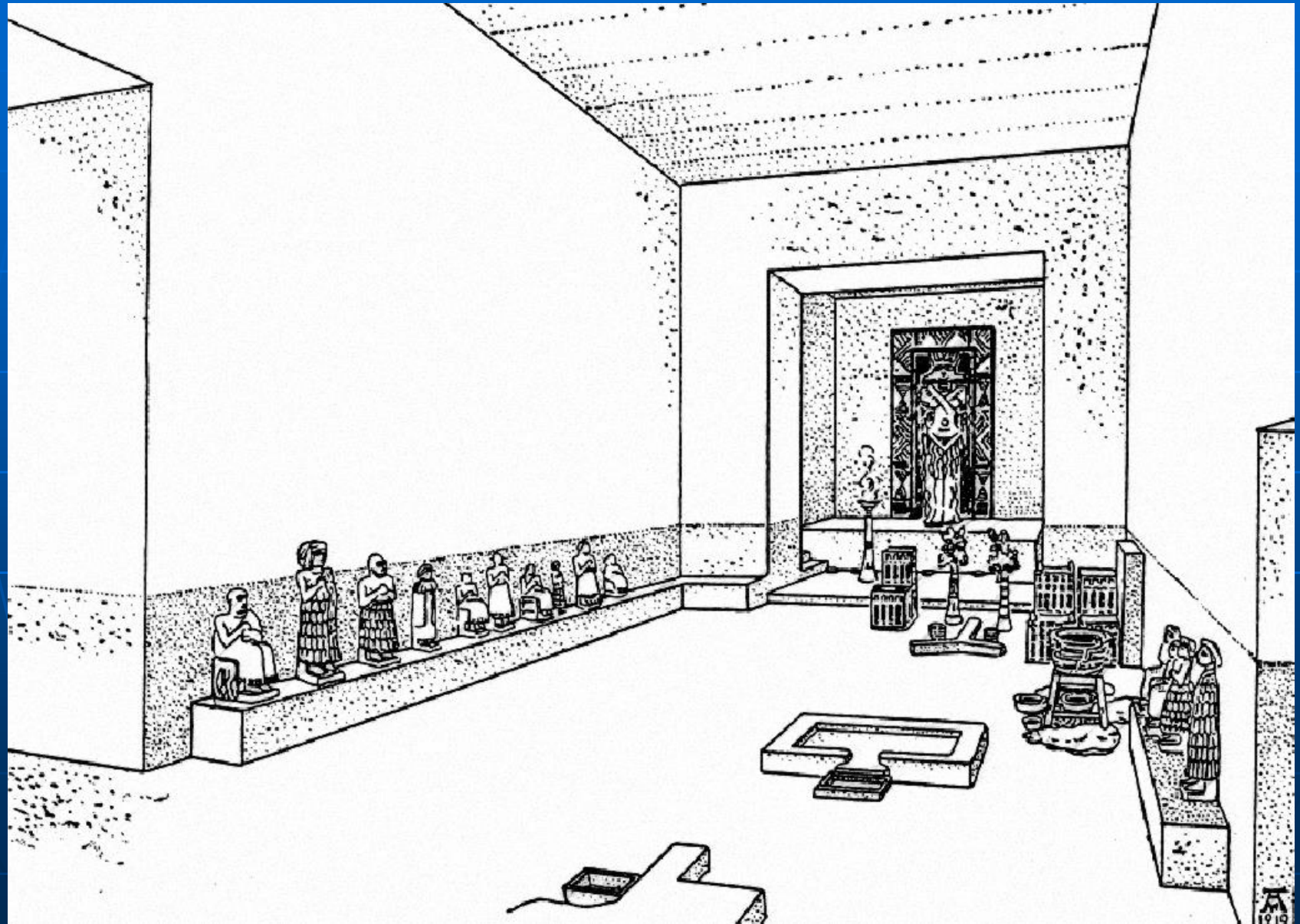
EARLY DYNASTIC VOTIVE STATUES – ASHUR, northern Mesopotamia



81 u. 82. Gipsstein-Statuette einer Frau. H: 65 cm



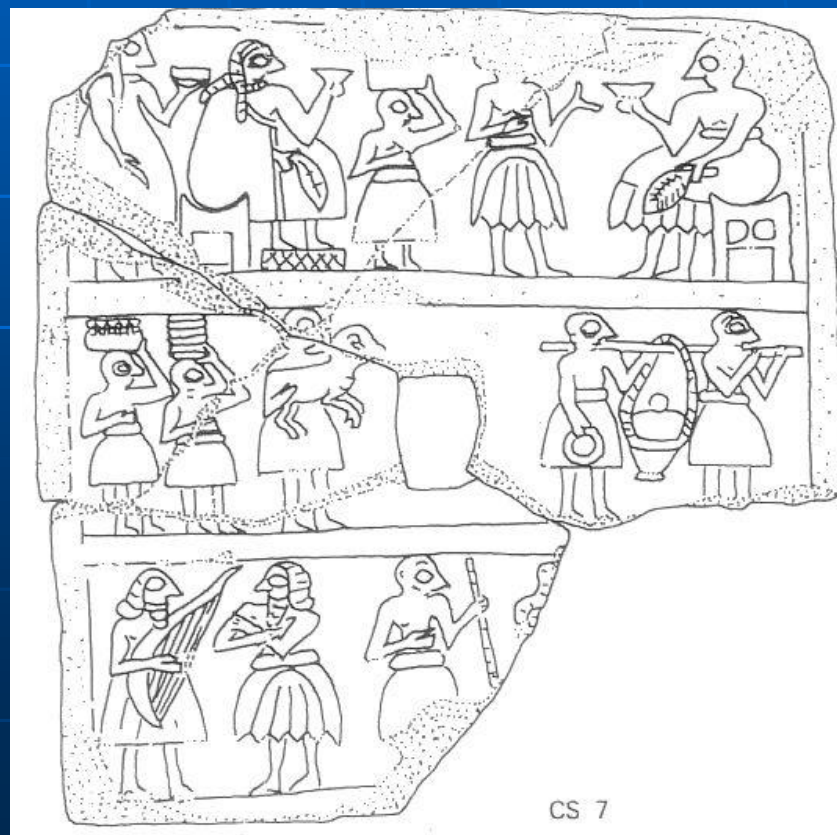
EARLY DYNASTIC ISHTAR TEMPLE FROM ASHUR



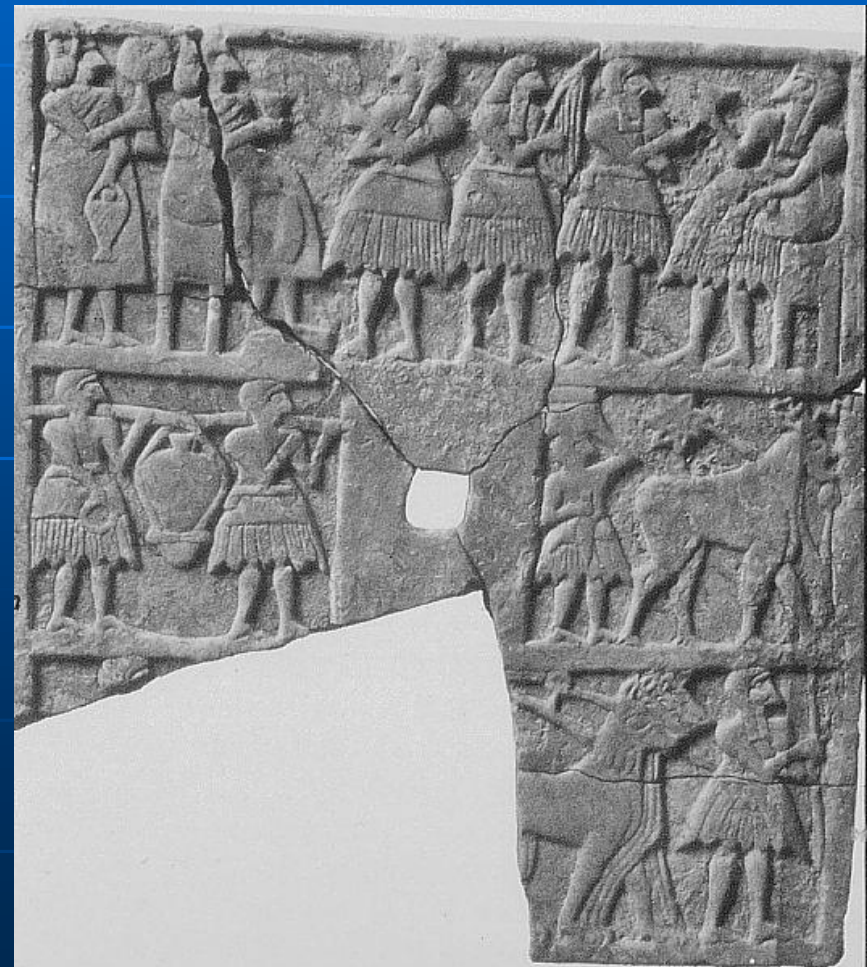
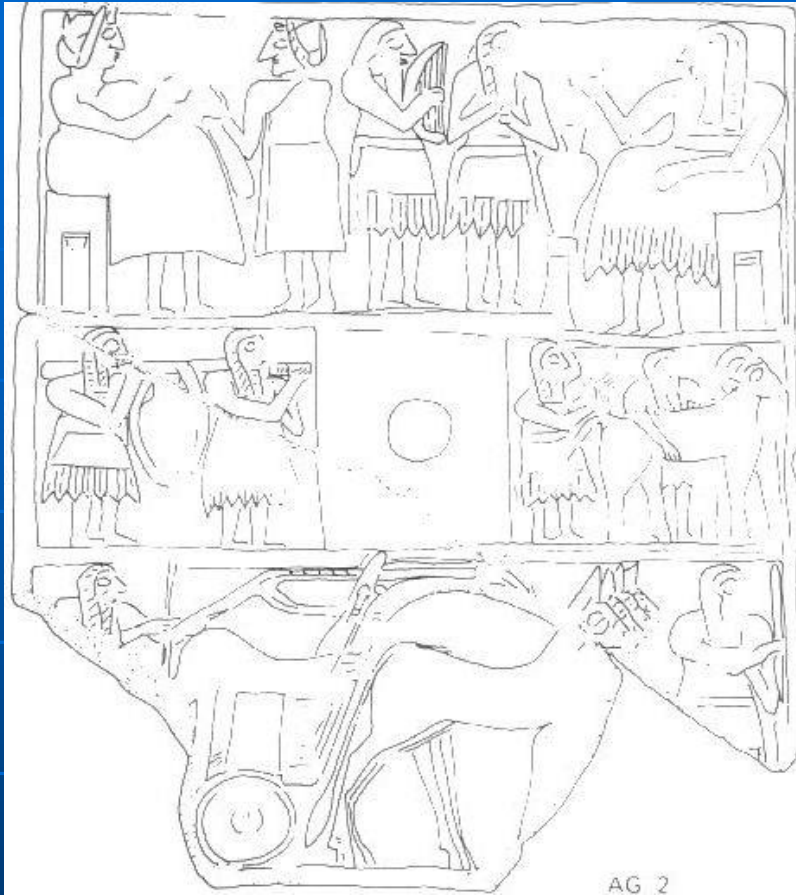
EARLY DYNASTIC III VOTIVE PLAQUE – DEPICTION OF KING URNANSHE
FROM GIRSU/ Tello (Sumer): first depiction of king known from written sources



EARLY DYNASTIC VOTIVE PLAQUE – „BANQUET SCENE”



EARLY DYNASTIC VOTIVE PLAQUES – „PEACE AND WAR SCENES”



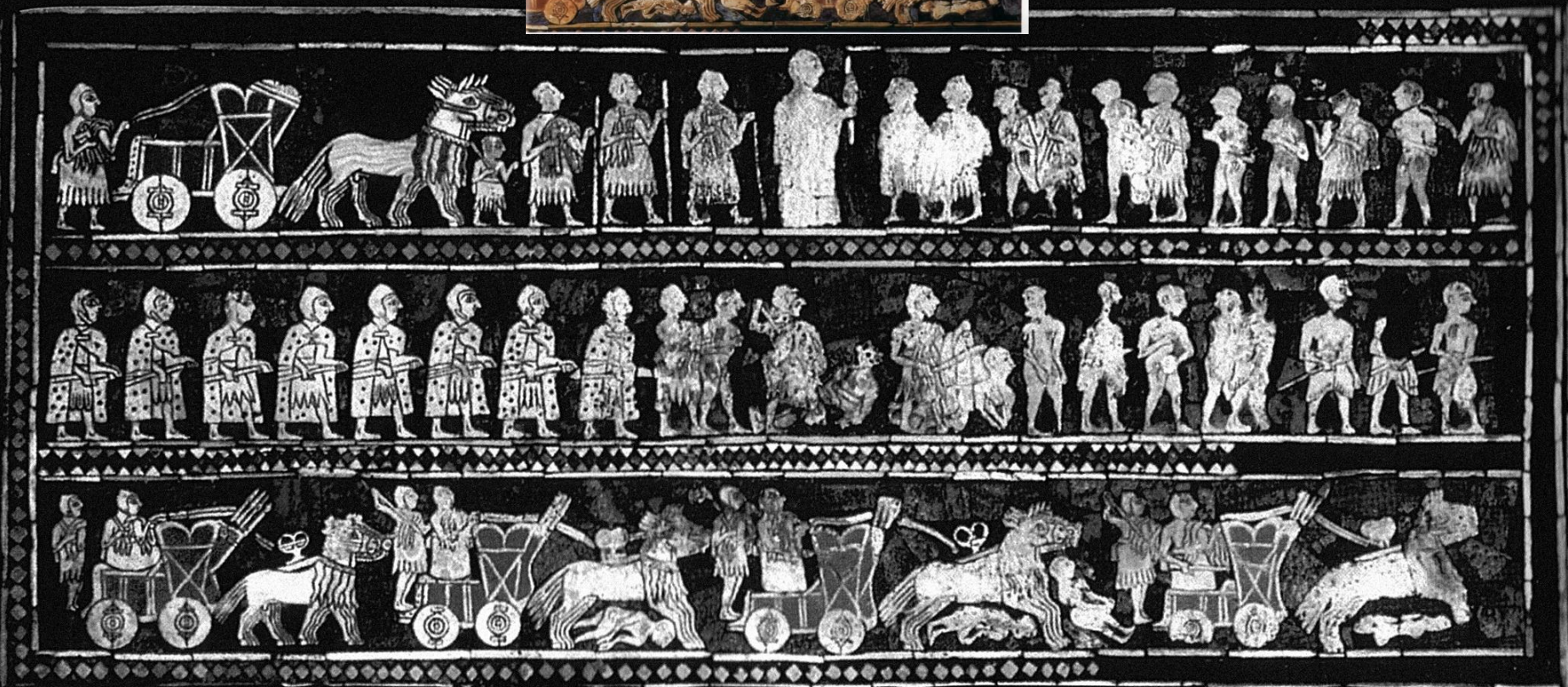
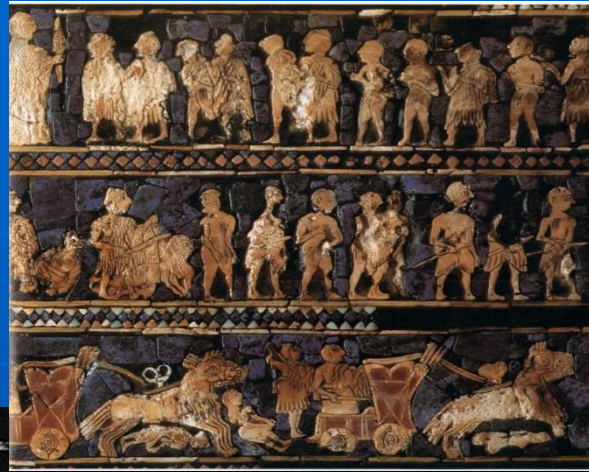
EARLY DYNASTIC VOTIVE PLAQUE WITH A PRIEST POURING LIBATION



EARLY DYNASTIC VOTIVE PLAQUE OF UR-ENLIL – THE
MERCHANT (Nippur)



EARLY DYNASTIC „THE STANDARD OF UR” – WAR SCENE (The Royal Cemetery at Ur)

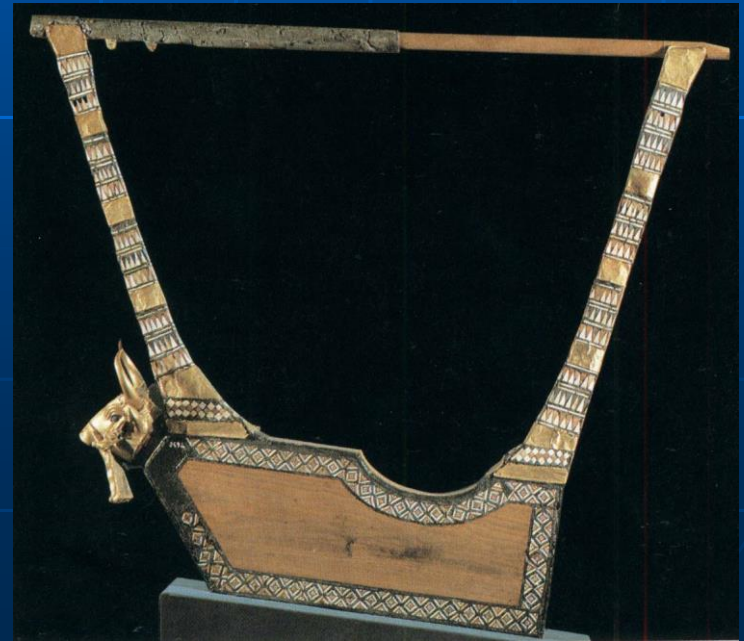




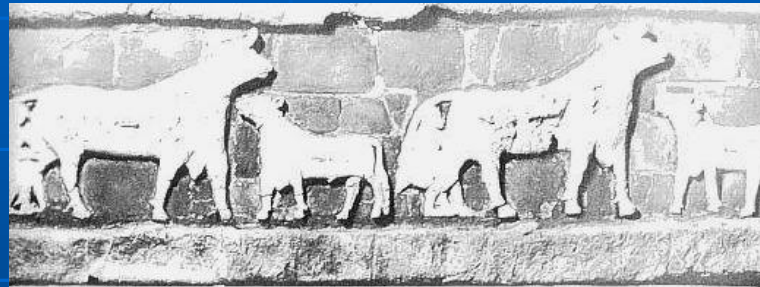
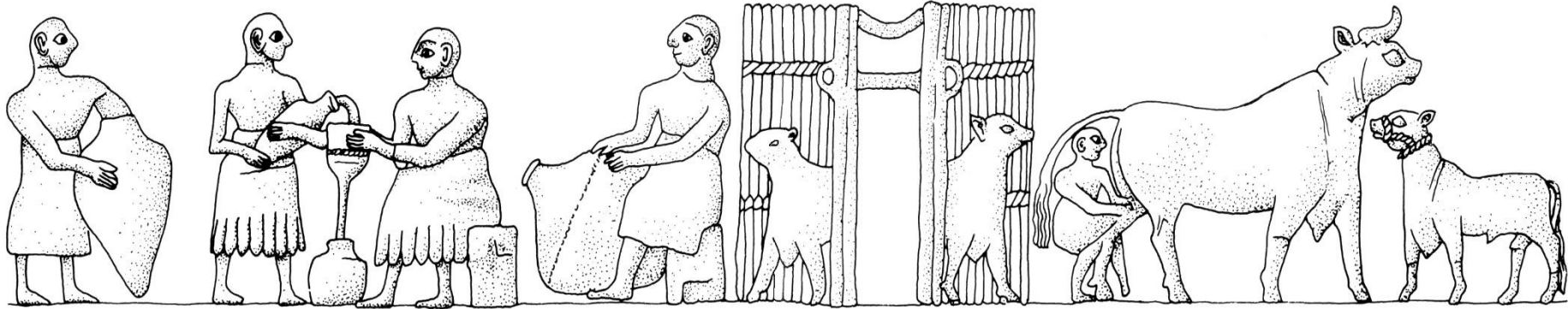
EARLY DYNASTIC MOSAIQUES FROM KISH AND MARI



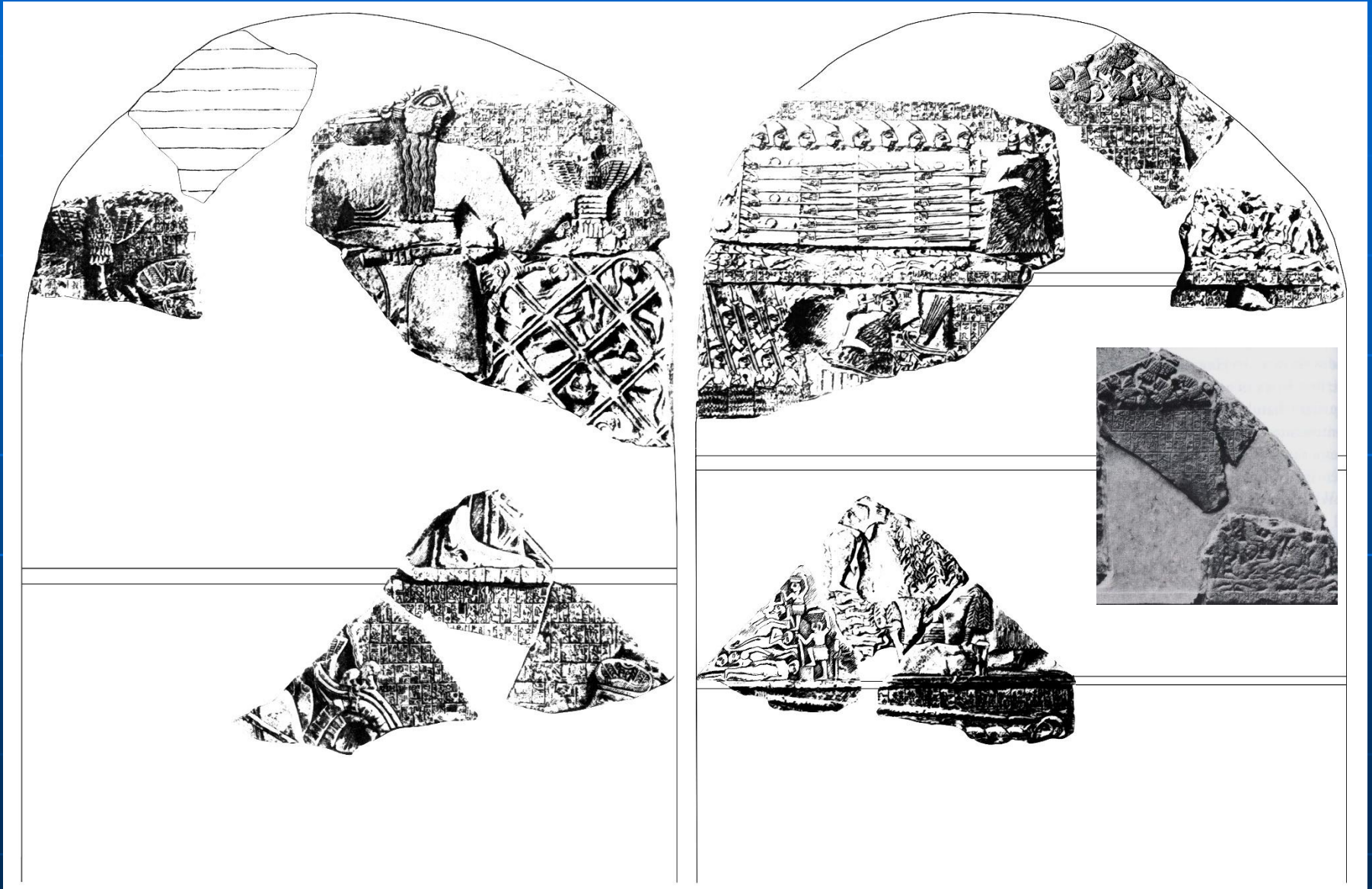
EARLY DYNASTIC QUEEN PUABI'S LYRE WITH MOSAIQUES (The Royal Cemetery of Ur)



MOSAIC FRIEZE DEPICTING MILKING OF TEMPLE COWS – AL.-UBAID TEMPLE



EARLY DYNASTIC STELE OF THE VULTURES FROM GIRSU (Tello)





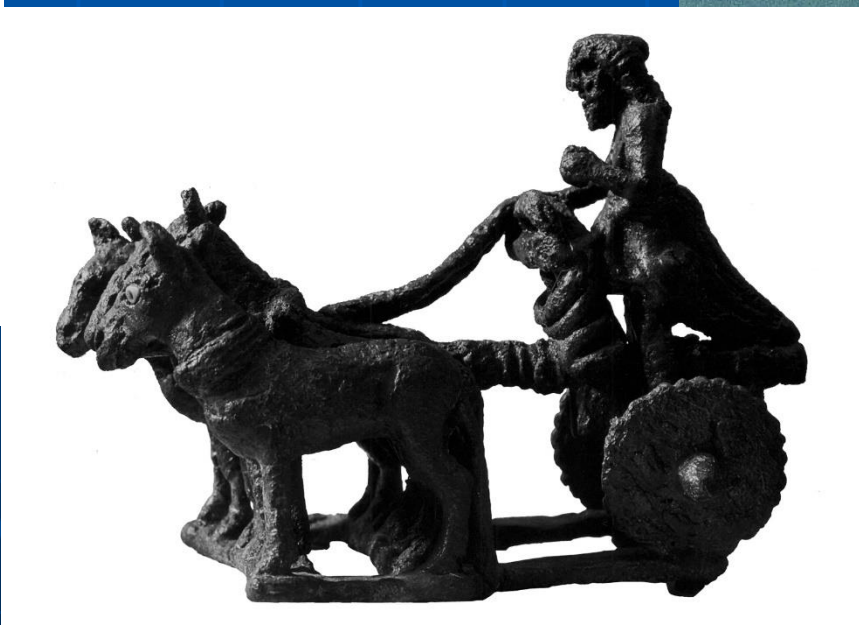
STELE OF VULTURES: obverse and reverse





RULER IN FRONT OF A
TEMPLE FASADE

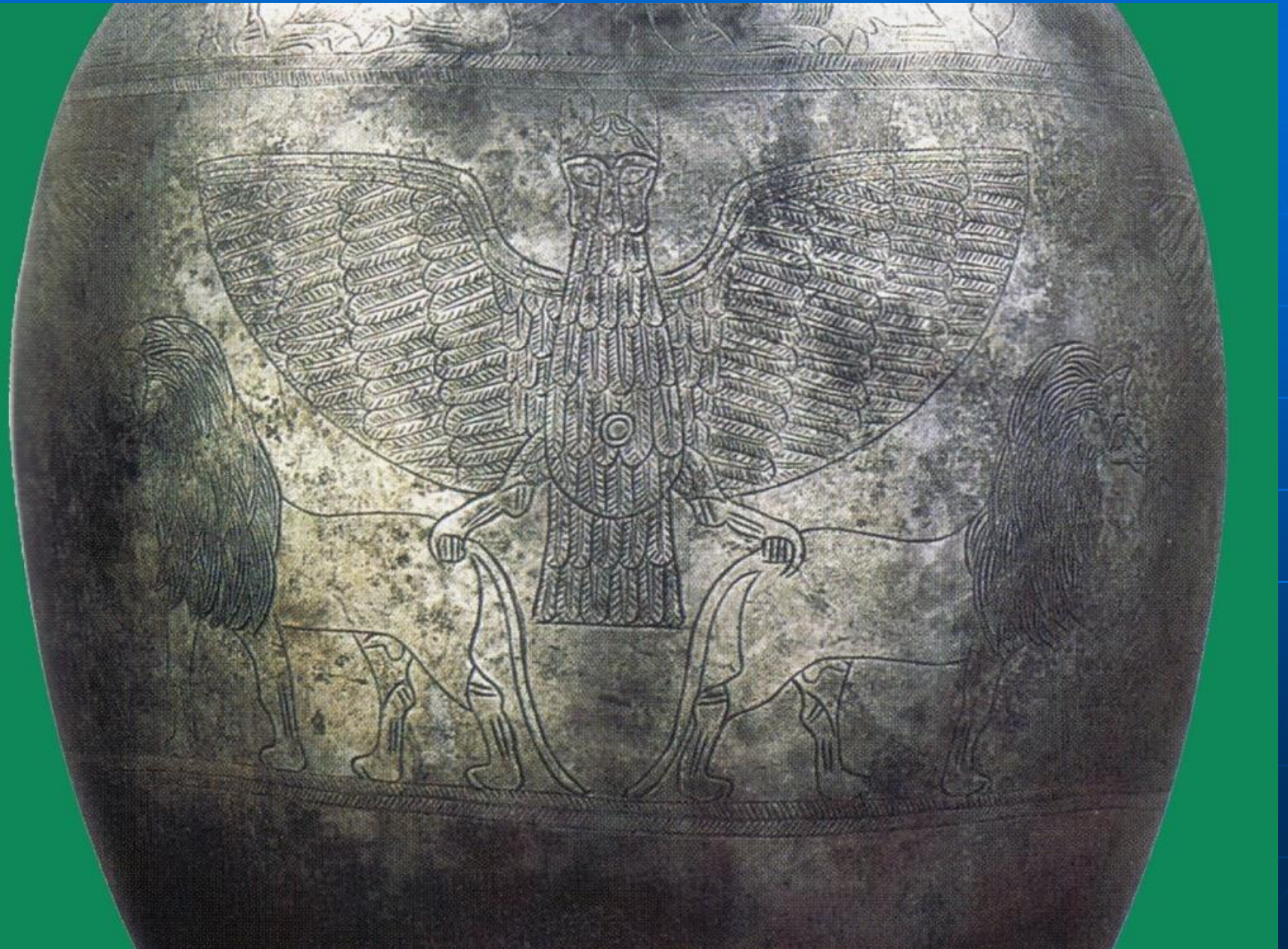
EARLY DYNASTIC COPPER FIGURINES – TELL AGRAB, KHAFAJE



EARLY DYNASTIC KING ENTEMENA'S SILVER VASE (Girsu)



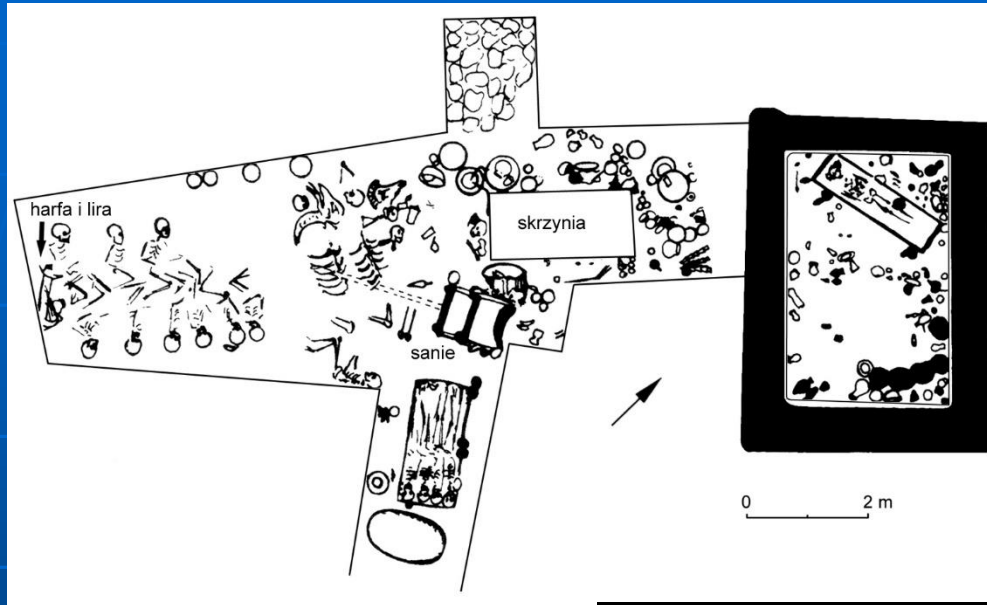
DEPICTIONS OF ANZU BIRD



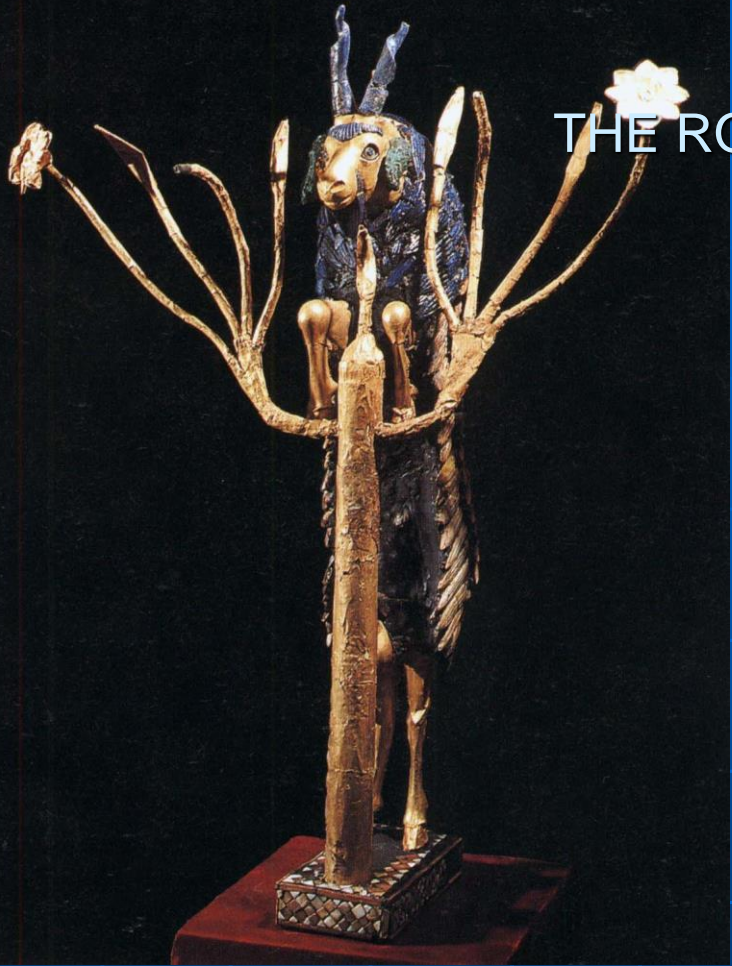
DEPICTIONS OF ANZU BIRD: A LINTEL FROM TEMPLE IN AL.-UBAID



QUEEN PUABI'S GRAVE GOODS (The Royal Cemetery of Ur)



THE ROYAL CEMETRY OF UR
GRAVE GOODS





PIEDMONT STYLE SEALS AND SEAL IMPRESSIONS:

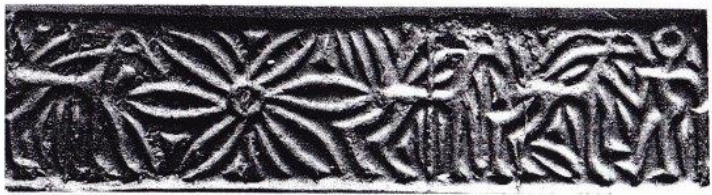
dynastic periods



43



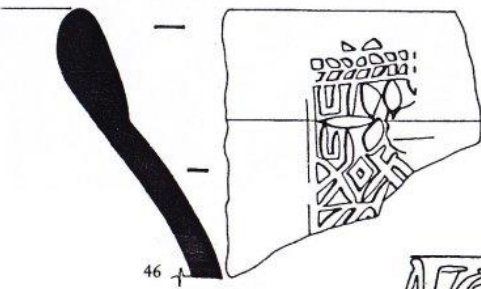
44



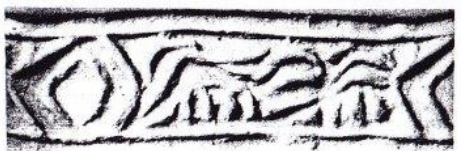
45



47



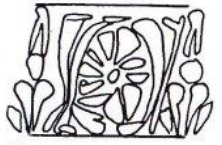
46



47



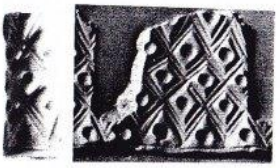
48



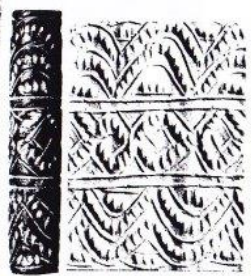
49



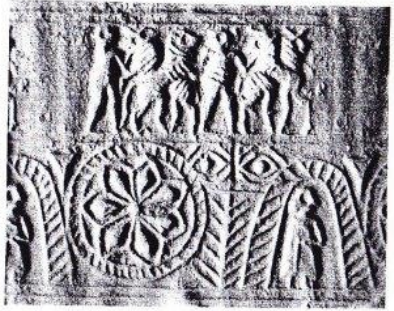
50



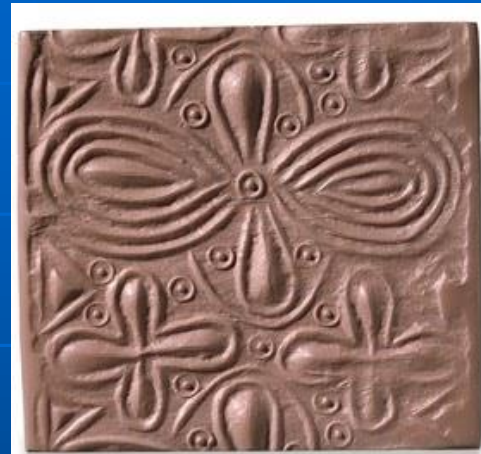
51



52



53

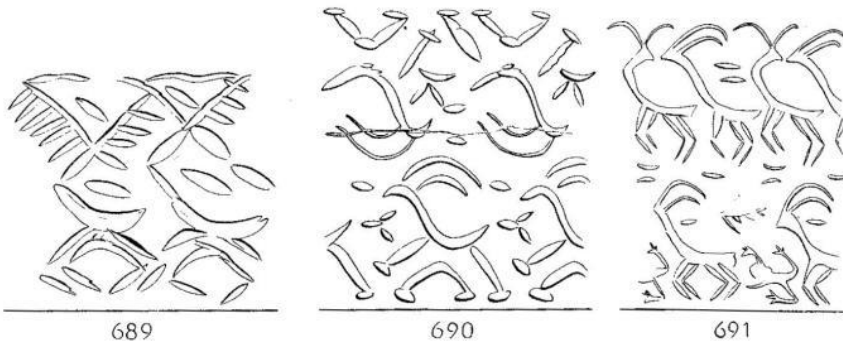
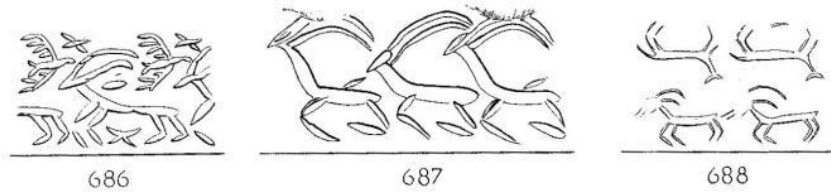
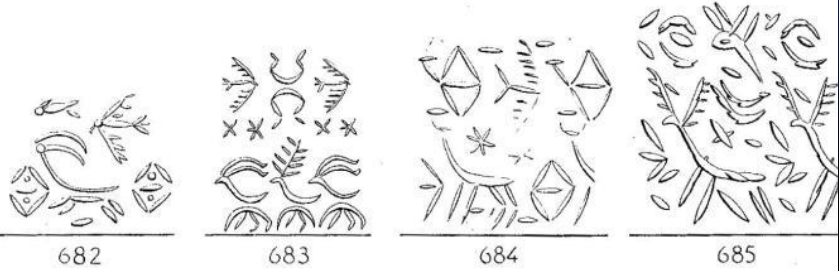


Early Dynastic I-II BROCADE STYLE FROM THE DIYALA REGION

PI 49

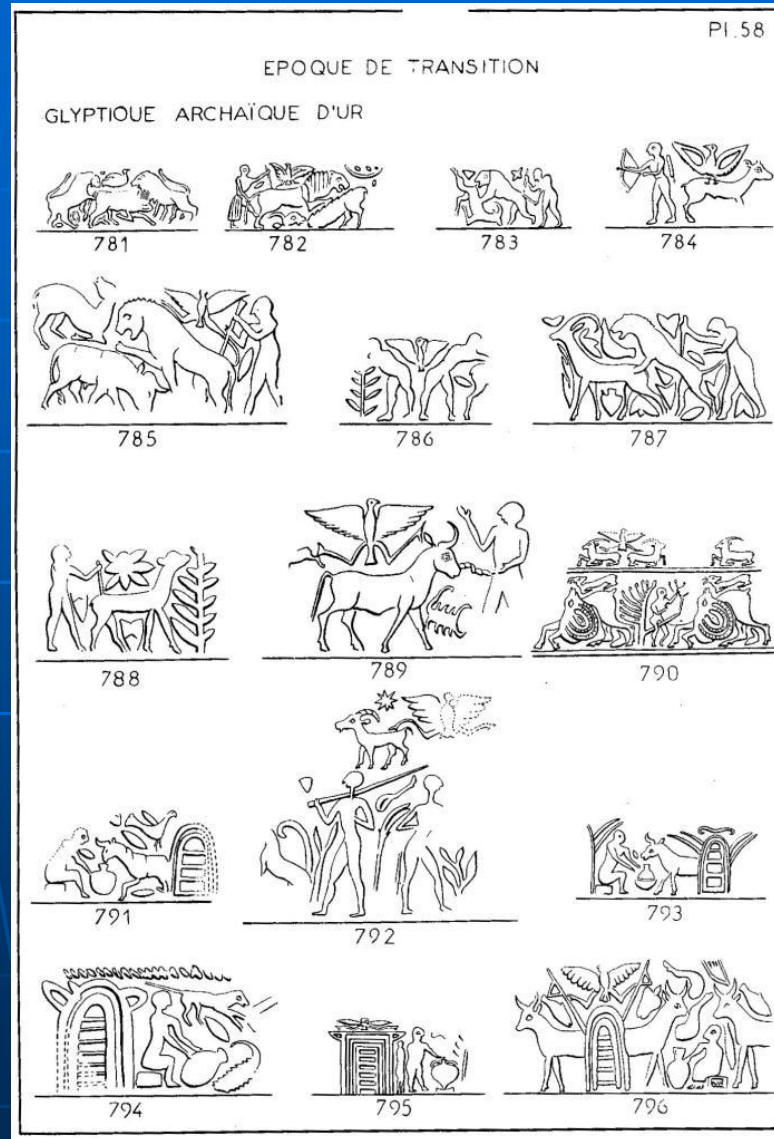
L'EPOQUE DE TRANSITION
de
TRADITION PREDYNASTIQUE

LE STYLE "BROCARD"



Diyala Project
Oriental Institute
University of Chicago

EARLY (EARLY DYNASTIC I-II) CONTEST SCENES ON SEAL IMPRESSIONS FROM UR



EARLY DYNASTIC III banquet scenes ON SEAL IMPRESSIONS – Southern Mesopotamia

