

# THE EARLY BRONZE AGE IN THE NEAR EAST

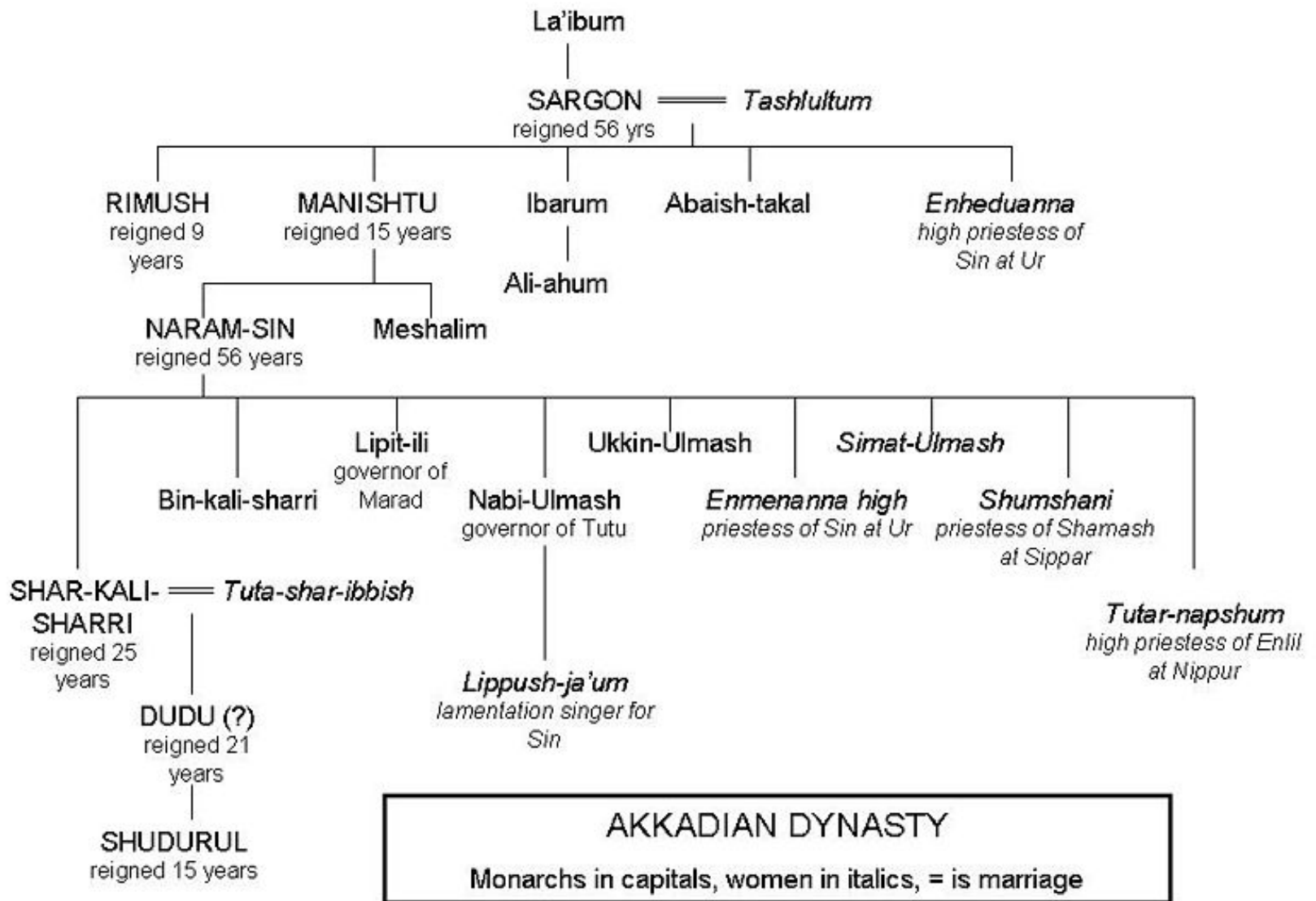
Mesopotamia:  
Akkadian Period  
**2340 – 2159 BC**



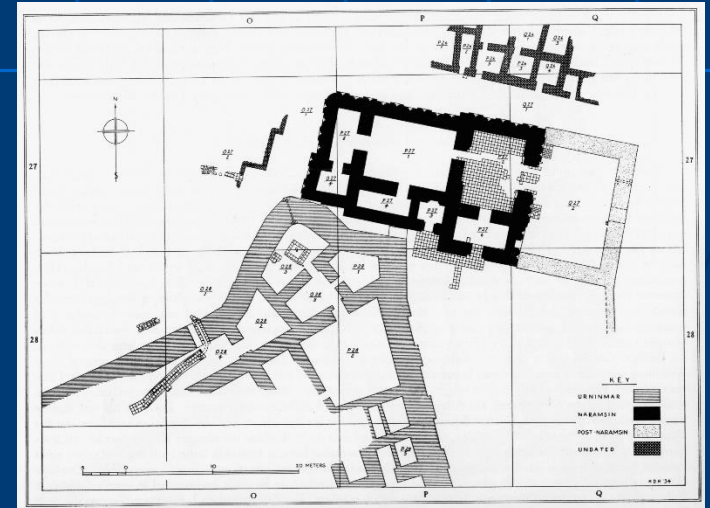
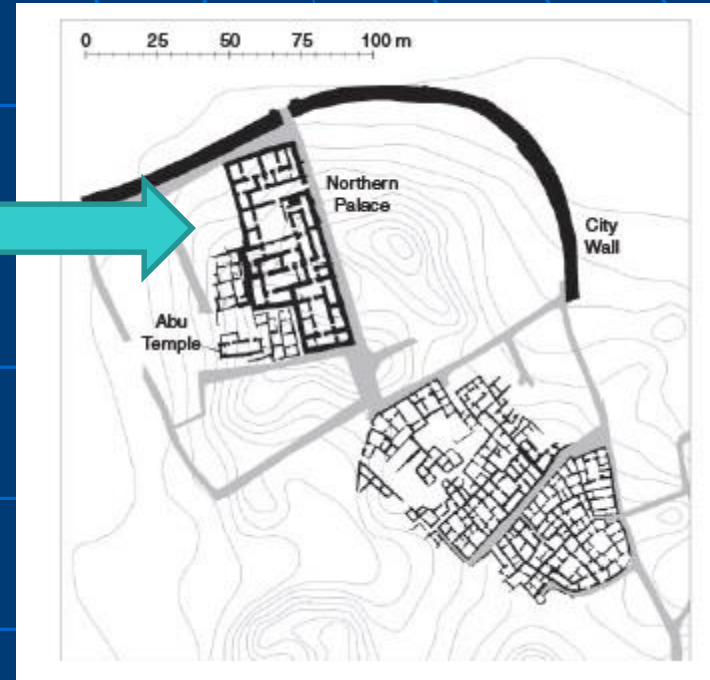
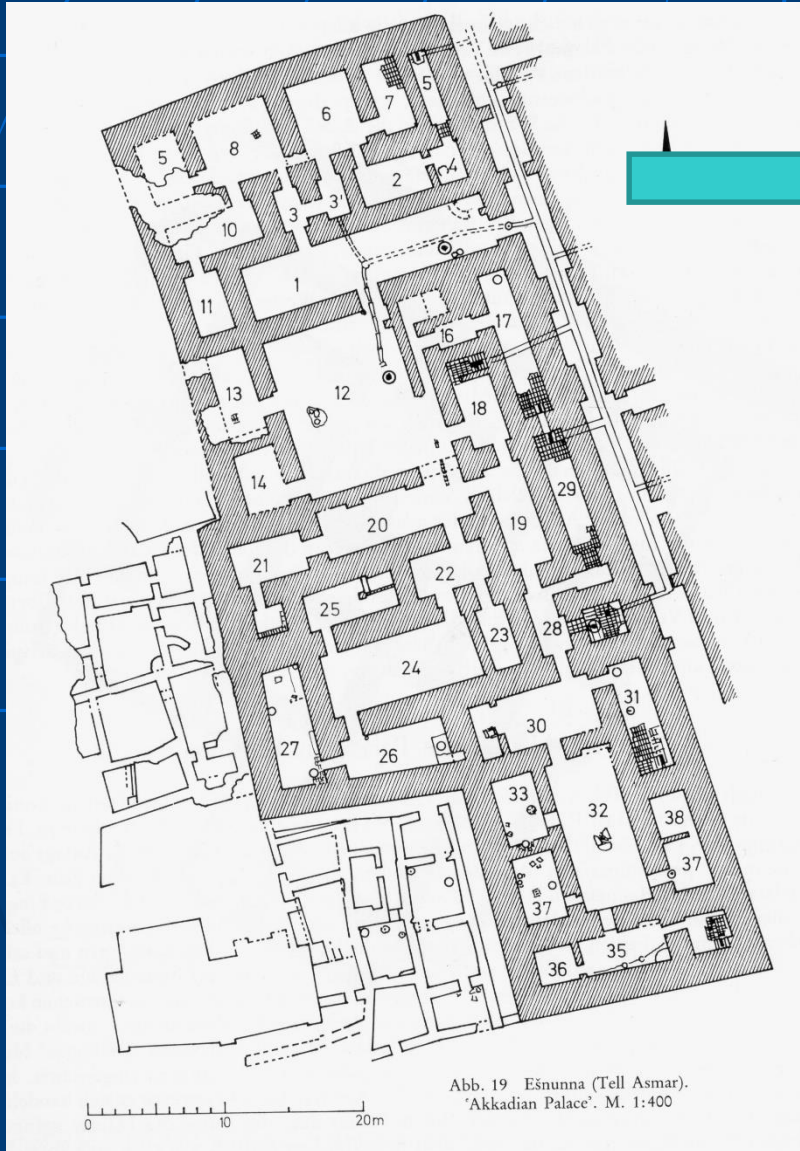
# BASIC LANDS OF AKKADIAN EMPIRE



# THE AKKADIAN EMPIRE ca. 2340 – 2159 BC



# Akkadian period public buildings from Eshnunna (modern Tell Asmar) in the Diyala Valley

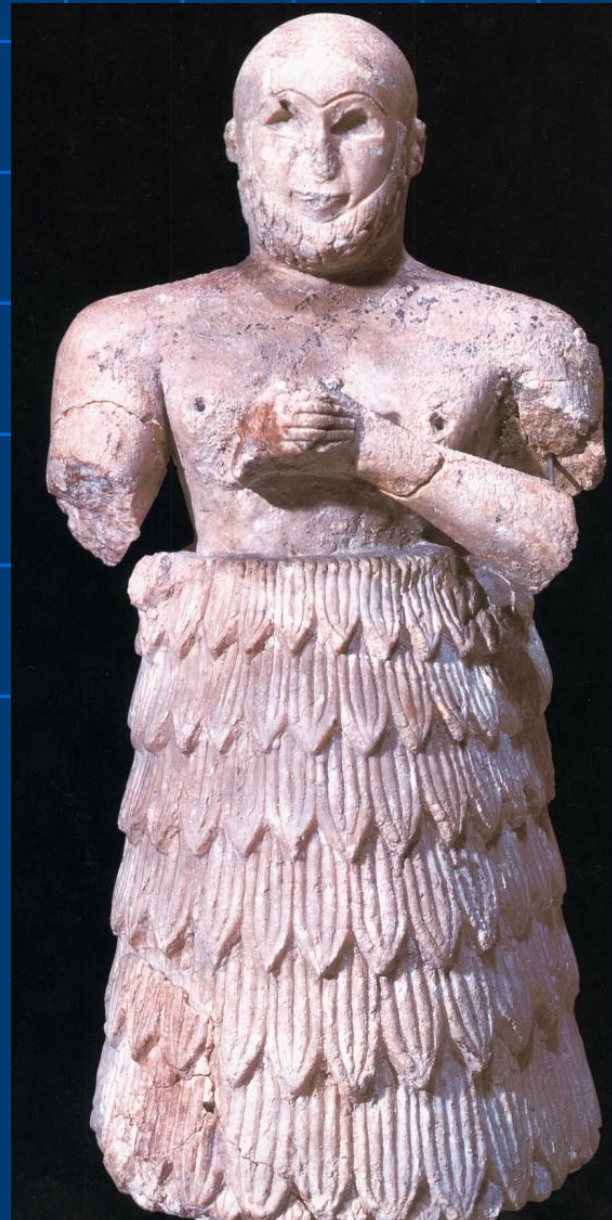


# Akkadian period statuary from Mesopotamia

## Manishtushu's statue



# AKKADIAN PERIOD VOTIVE STATUES



# SARGON'S STELE



fot. Szary Wilk

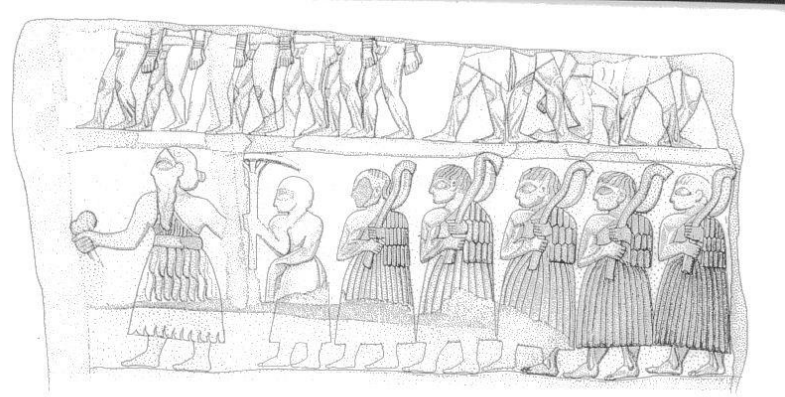


Fig. 528 Susa: stele di Sargon, Parigi Museo del Louvre Sb.1 (b. 91), diorite (Börker-Kläbn, 18d).



## Detail of Sargon's stele



# Fragment of Rimush's stele



# NARAMSIN'S STELE

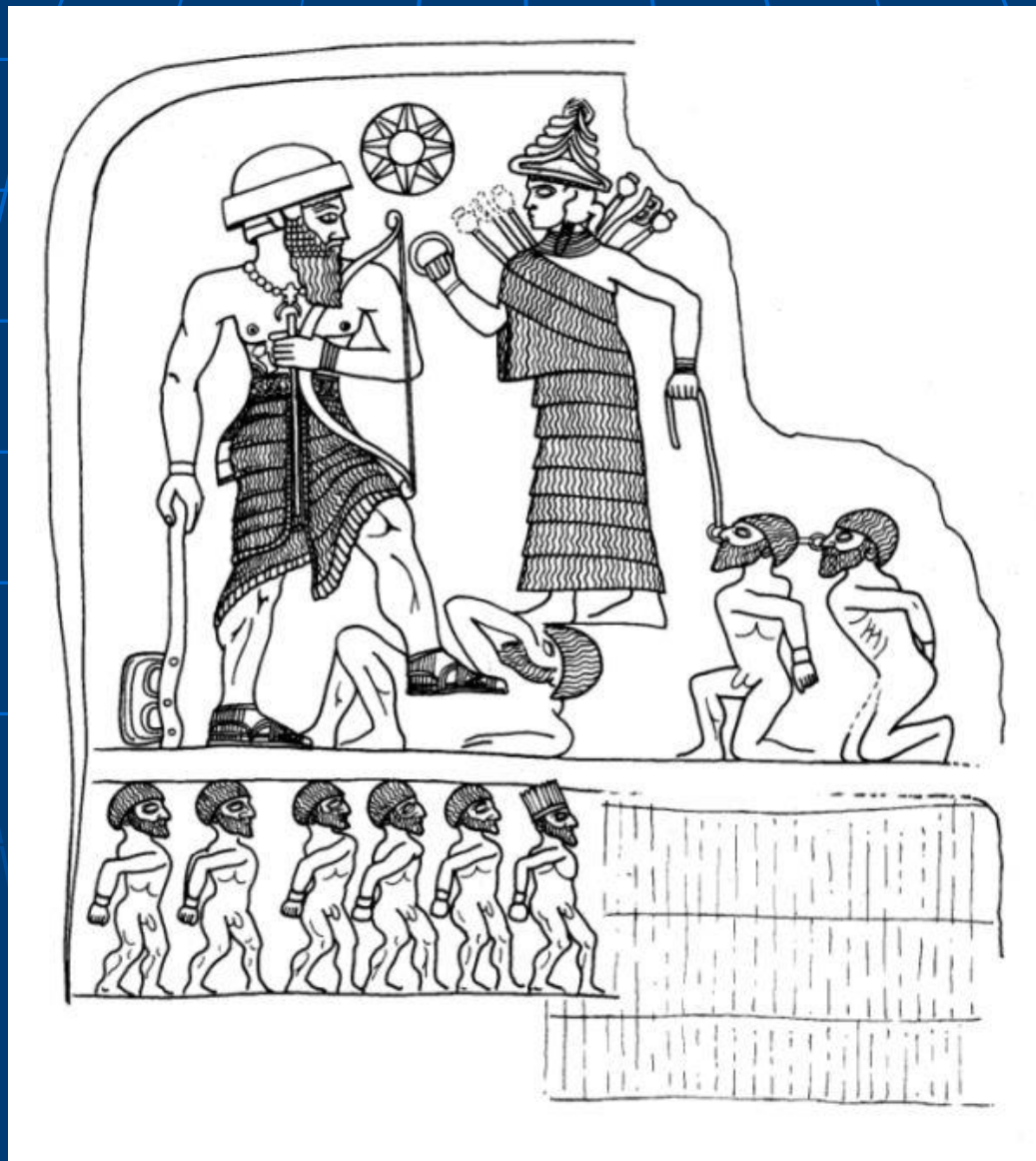


# Darbandi rock relief Iraqi-Iranian border

Pir Hussein  
(Turkey)  
Akkadian stele



# ROCK RELIEF OF Lullubean king from Zar-i-Pol in Iran



# ENHEDUANNA'S (Sargon's daughter) DISC



SARGON'S HEAD-fragment of a destroyed statuary



# METAL STATUE FROM BASSETKI (Iraq)



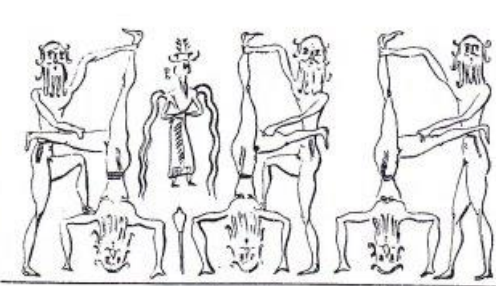


# Cylinder seal impressions from Akkadian Period

L'EPOQUE D'AKKAD

Pl. 111

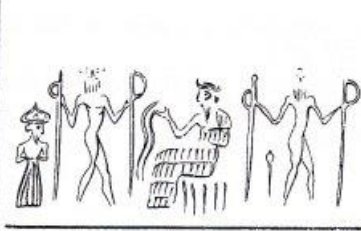
LE HEROS NU ET LE DIEU DE L'ABIME



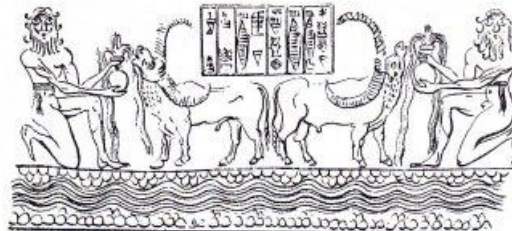
1470



1471



1472



1473



1474



1475



1476



1477



1478



1479



1480

# AKKADIAN SEAL IMPRESSIONS



CHARACTERISTIC:  
COMBAT SCENES,  
MUSCULATURE,  
BENT ARM

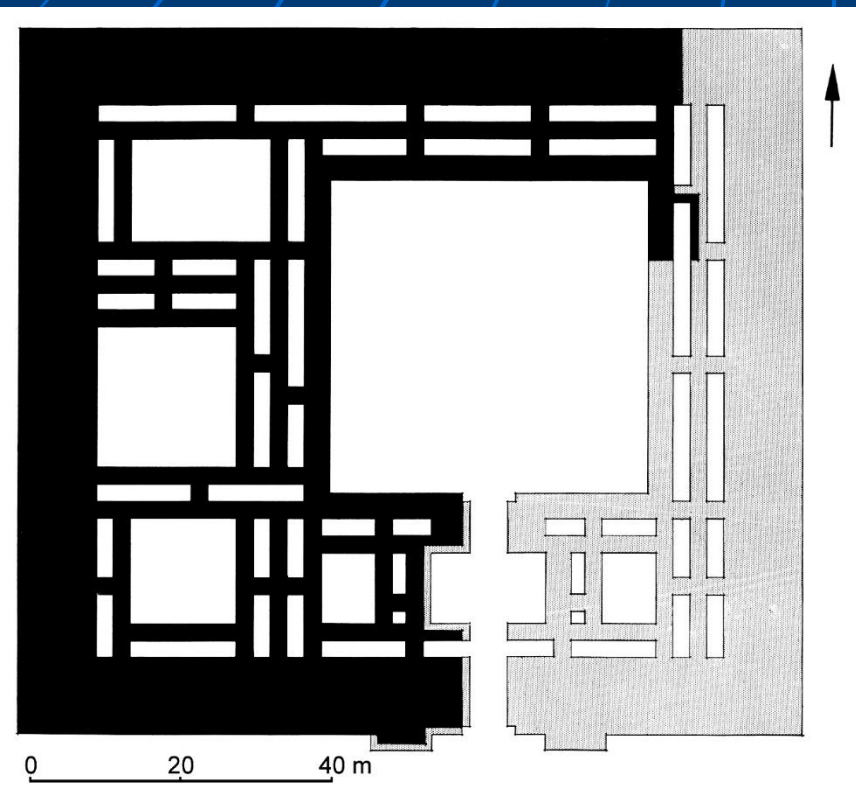




Akkadian period bull with human face figurine from Tell Brak in Syria



# TELL BRAK: NARAMSIN'S FORT AND ADMINISTRATIVE SECTOR

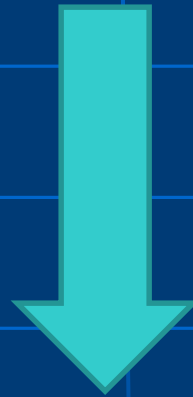


# THE EARLY BRONZE AGE IN THE NEAR EAST

The Third Dynasty of Ur  
Period

**The Gutian "Interregnum"**

**around 2150-2120 BC**



**The third dynasty of  
Ur**

**2112-2004 BC**

ANATOLIA

● Harran

● Ashur

LULLUBI

SYRIA

AMORITES

NORTHERN  
MESOPOTAMIA

GUTI

IRAN

● Mari

● Eshnunna

● Sippar

AKKAD

● Kish

● Larak

ELAMITES

● Susa

● Nippur

● Girsu

● Uruk

SUMER

● Lagash

● Eridu

● Ur



TimeMaps



# The Third Dynasty of Ur

GUDEA  
*ensi*  
in

Ur-Nammu: 2112-c. 2095



Lagash

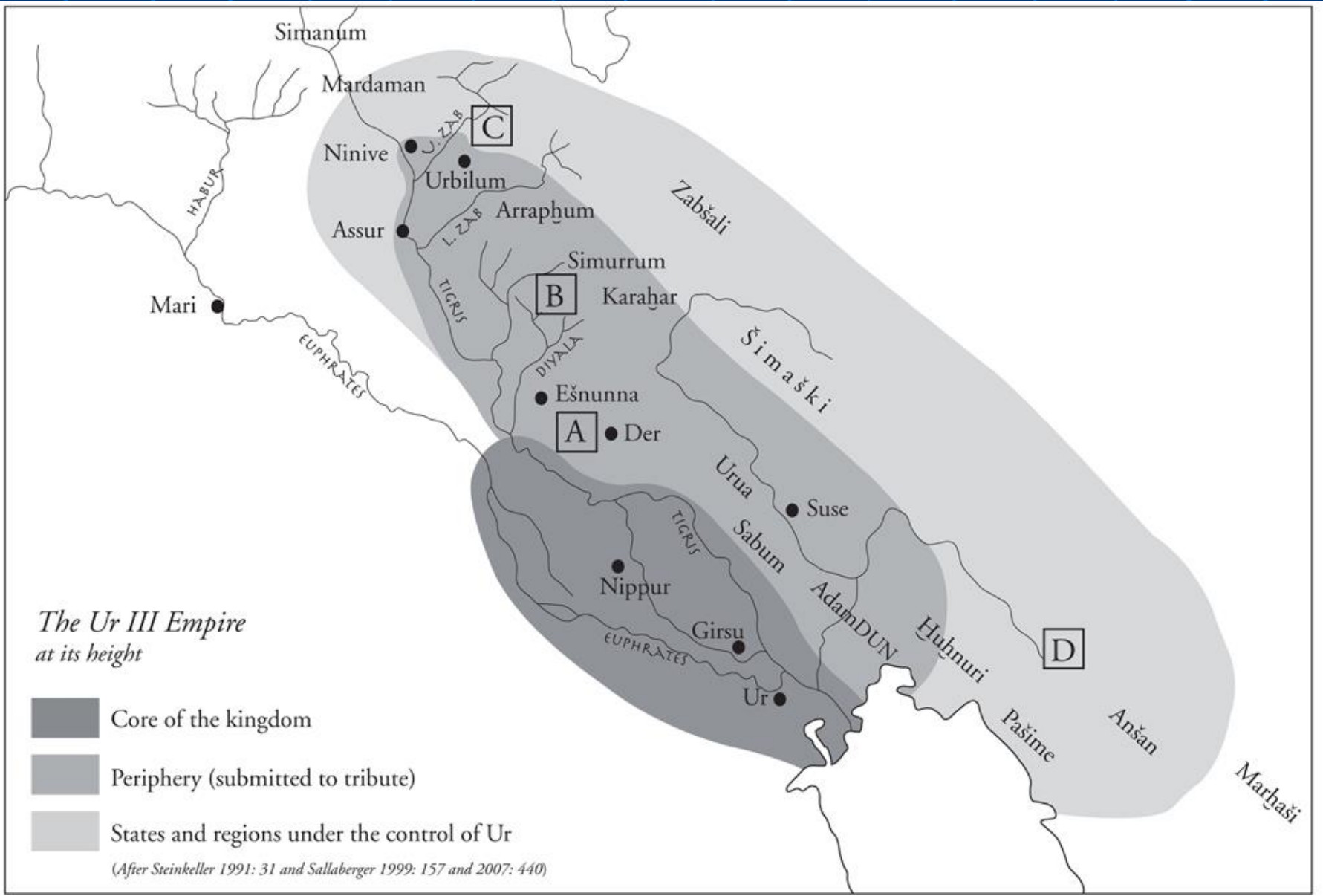
Shulgi: 2094-2047

Amar-Sin: 2046-2038

Shu-Sin: 2037-2029

Ibbi-Sin: 2028-2004

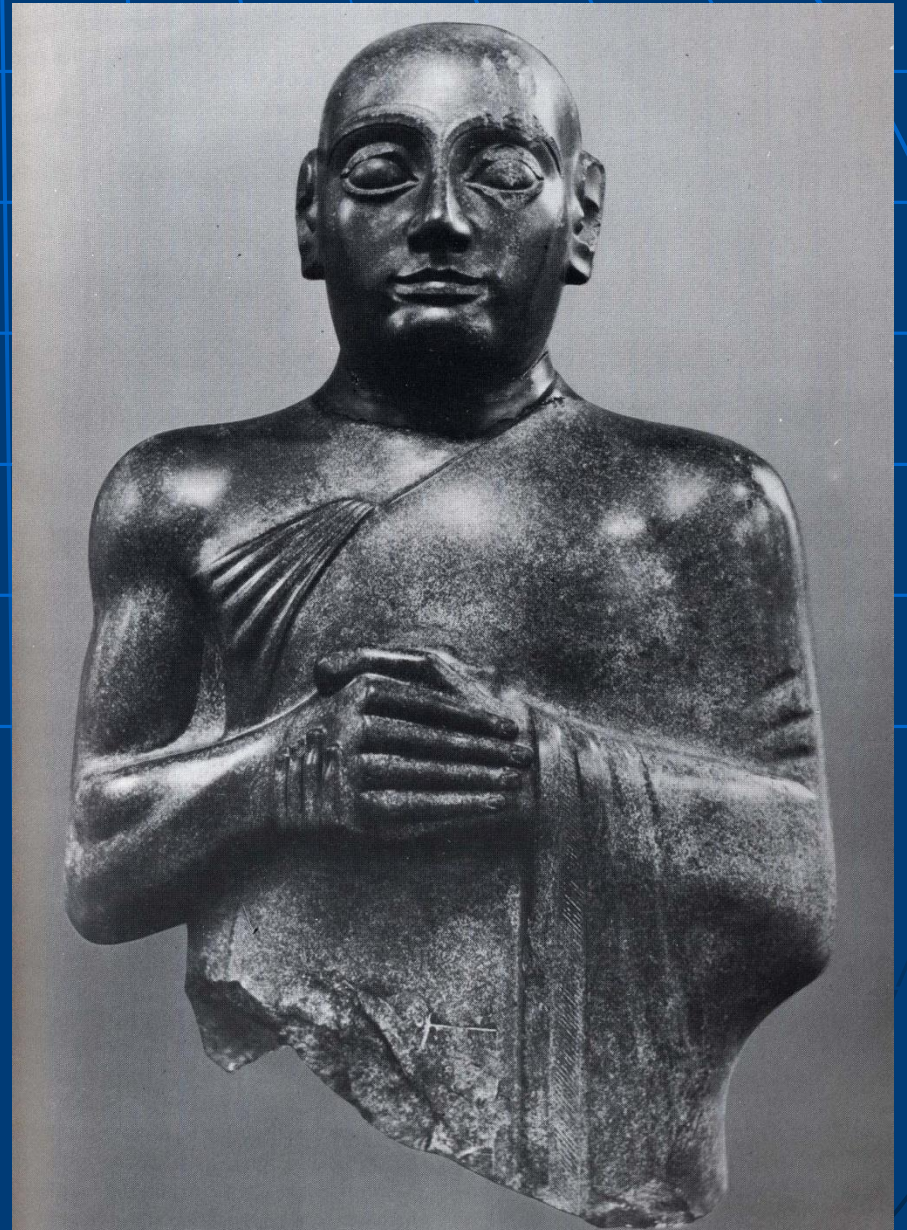
( Middle chronology )



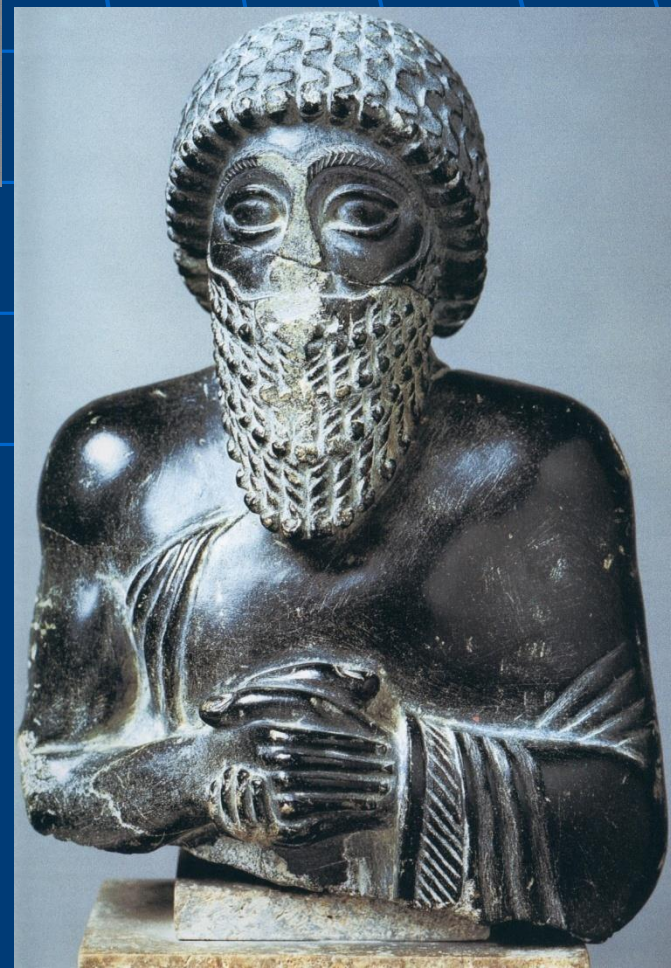
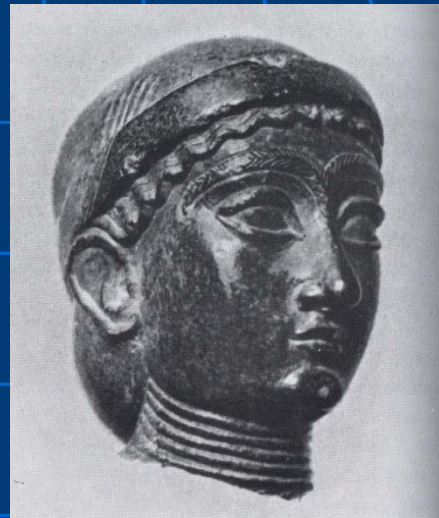
*The Ur III Empire at its height*

*(After Steinkeller 1991: 31 and Sallaberger 1999: 157 and 2007: 440)*

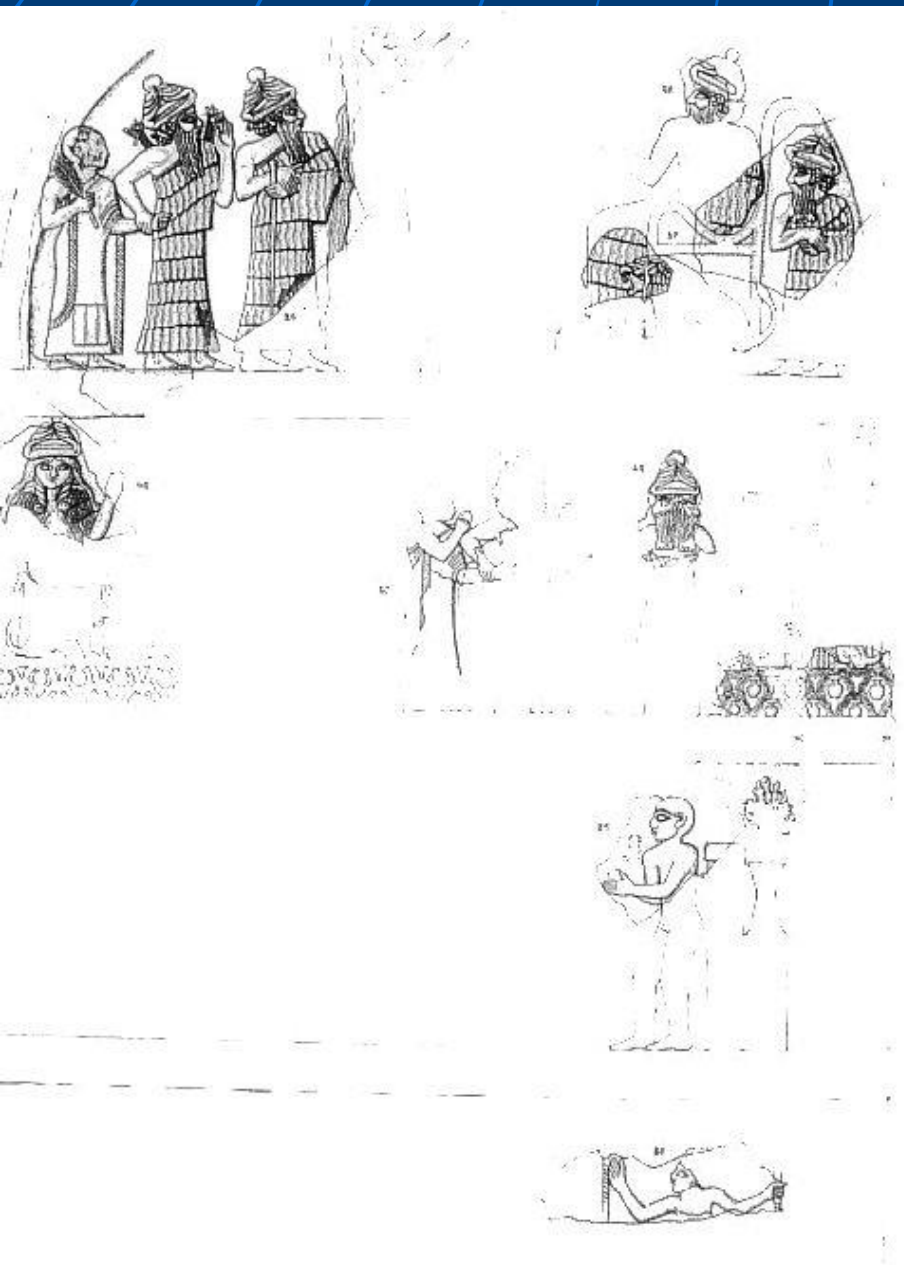
GUDEA STATUES— *ENSI*—ruler OF THE LAGASH STATE



# DIORITE STATUARY FROM THE 3RD DYNASTY PERIOD

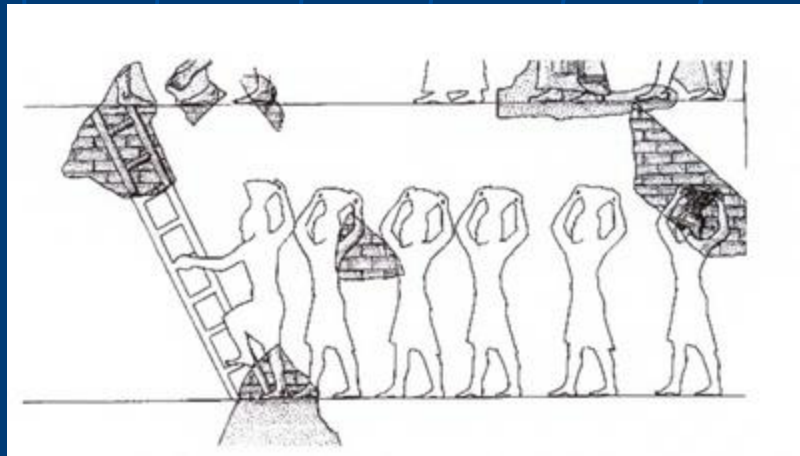
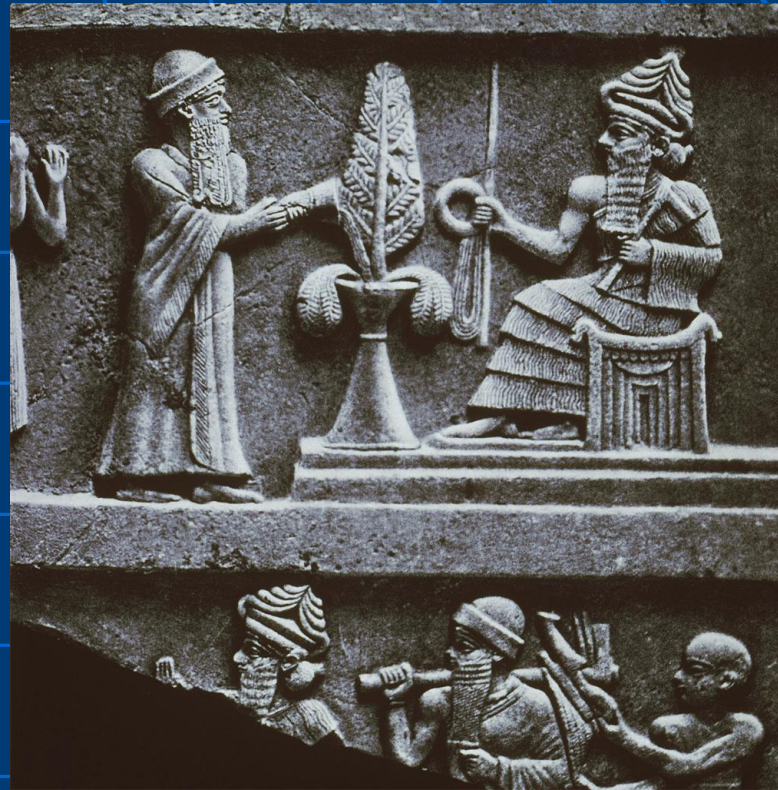
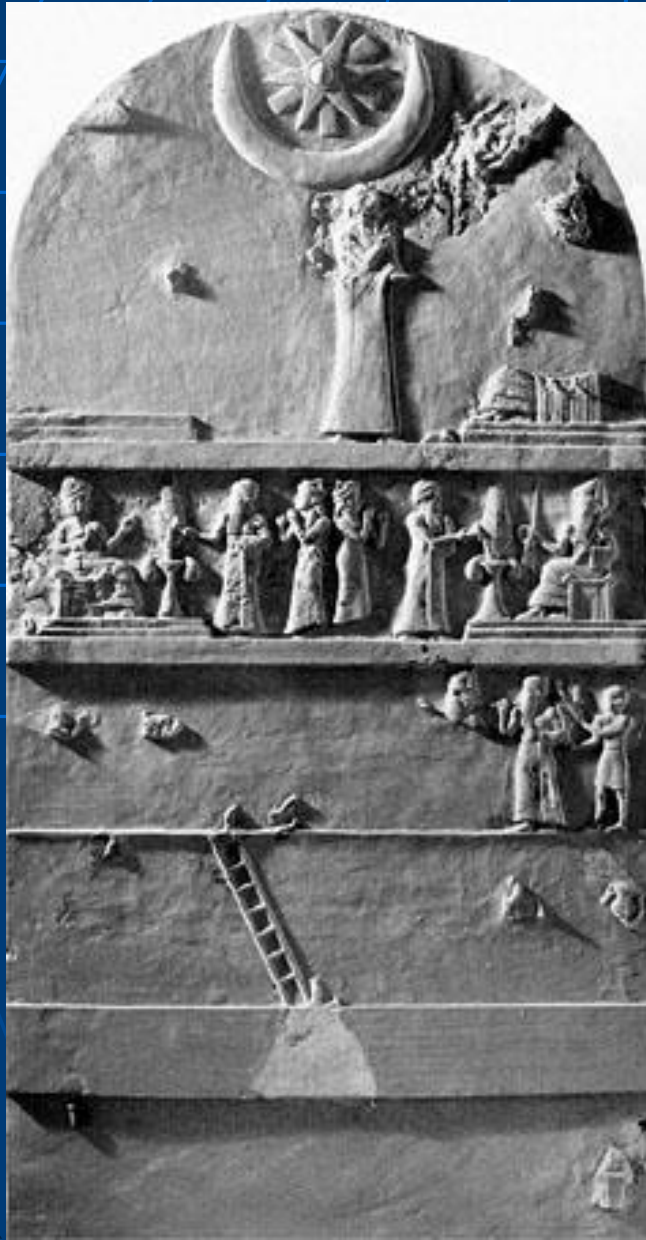


# GUDEA'S STELAE FROM THE CITY STATE OF LAGASH

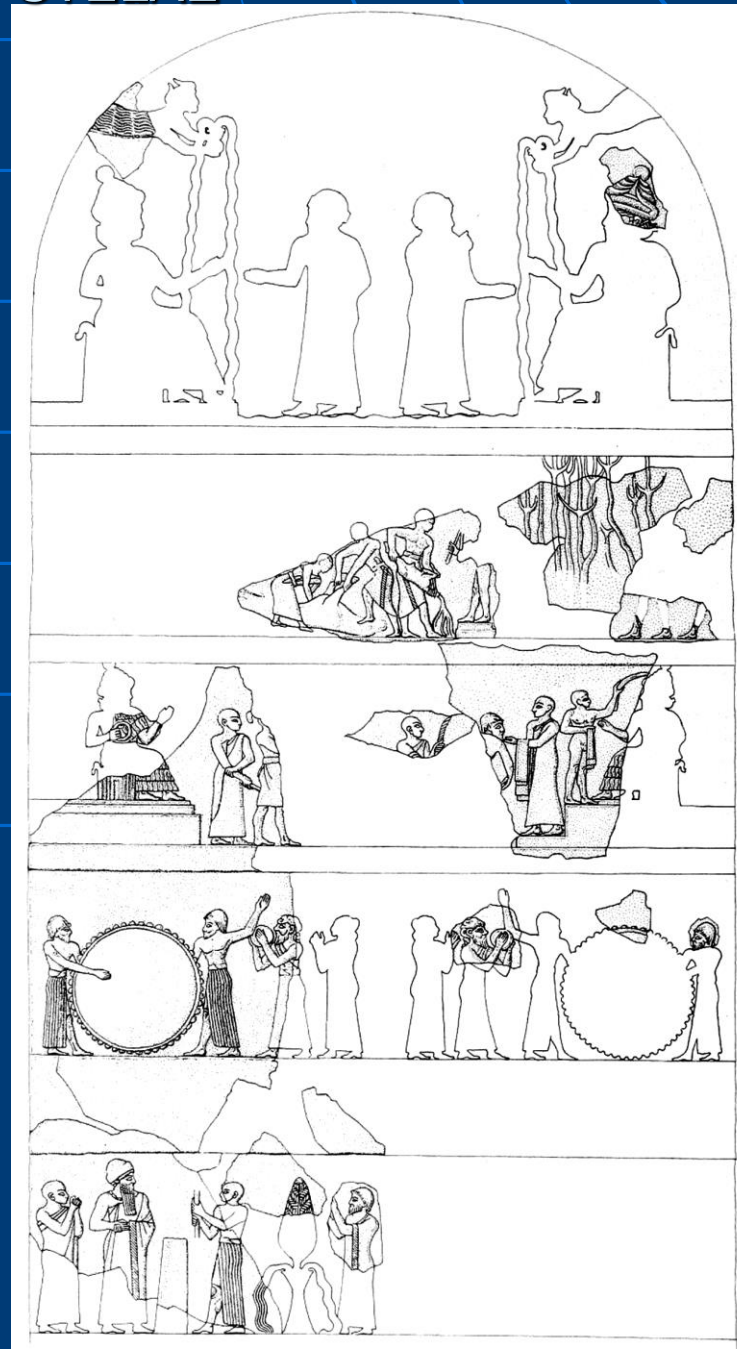
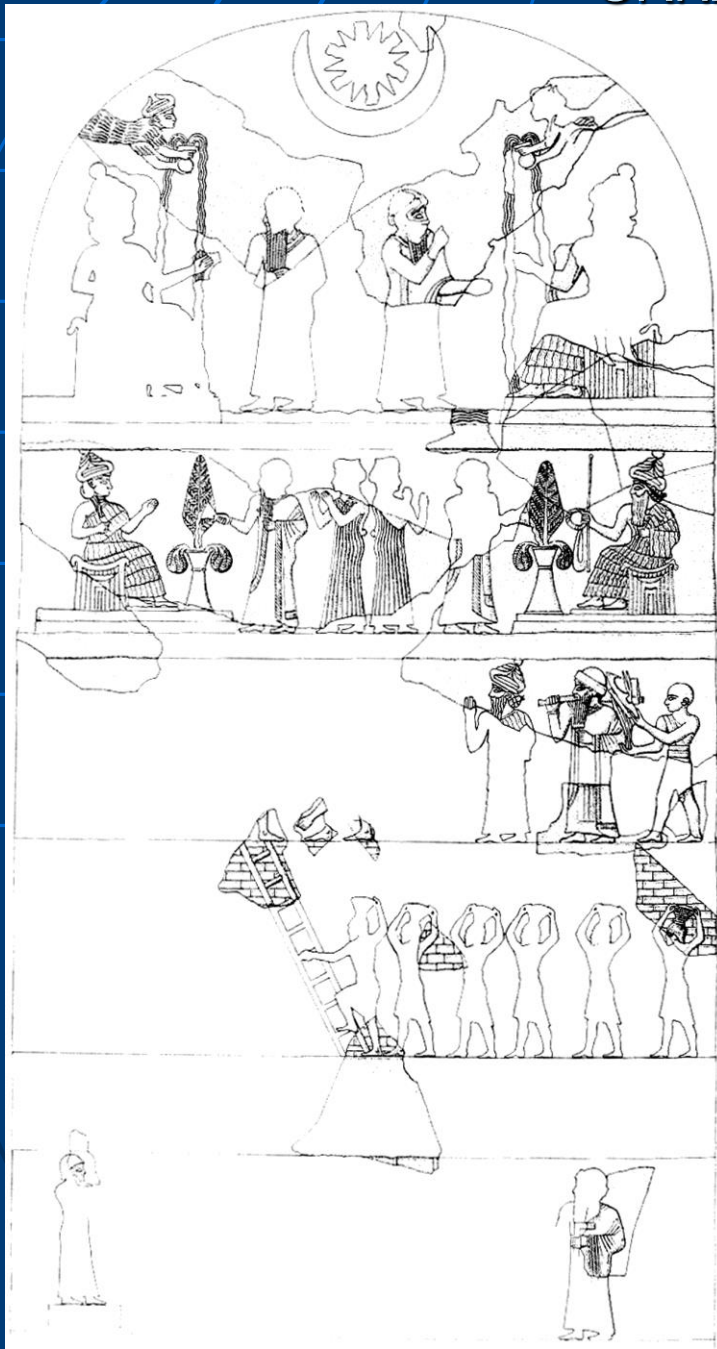


Gudea, on left, is grasped by his patron-god, Ningishzida, who has horned Mushushu dragons erupting from his shoulders. Before him is perhaps Tammuz, they are approaching perhaps Enki who dispenses freshwaters to sustain earthly life.

# KING URNAMMU'S STELA (UR/ MESOPOTAMIA)



# URNAMMU'S STELAE



# PRESENTATION SCENE FROM UR III SEALS

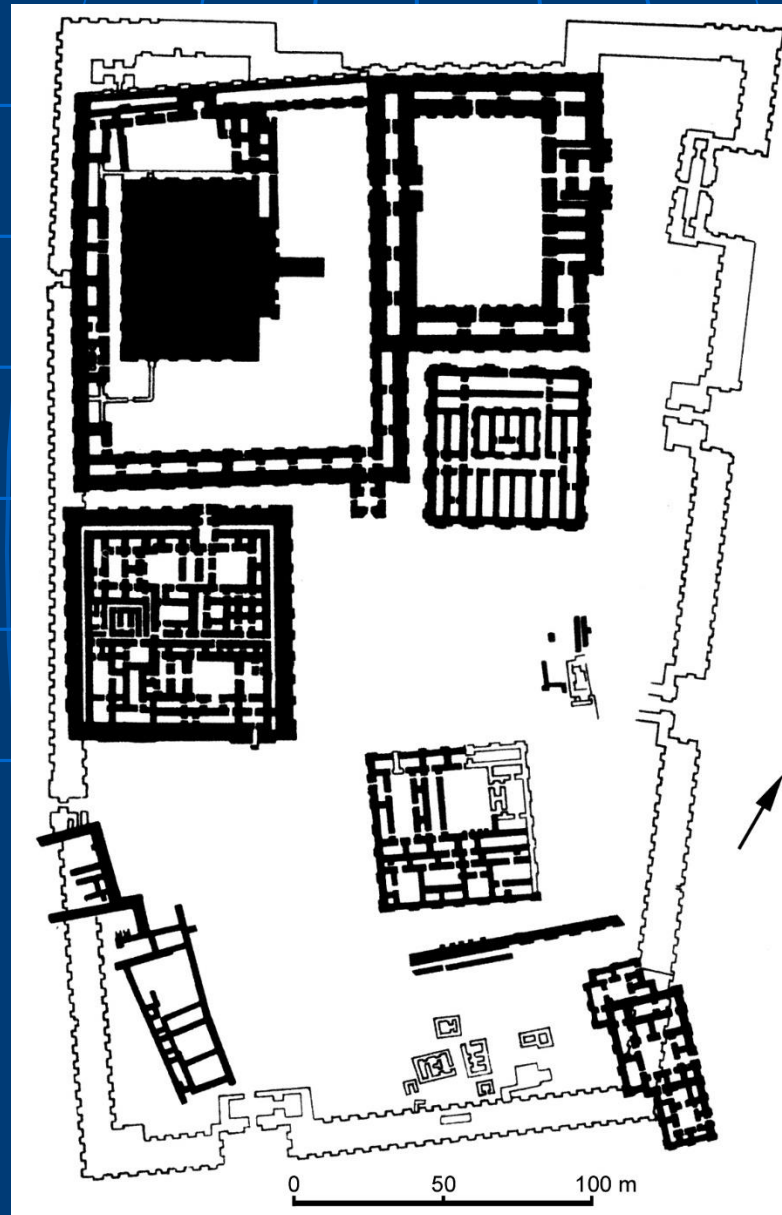


Seal of Hašhamer, ensi of Iškun-Su'en, citing Ur-Nammu(?). Modern impression. British Museum, BM 59126; Collon, *British Museum 2* 469

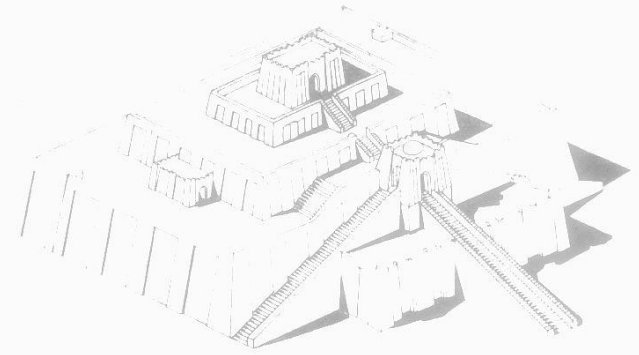




# THE HOLY TEMENOS OF UR



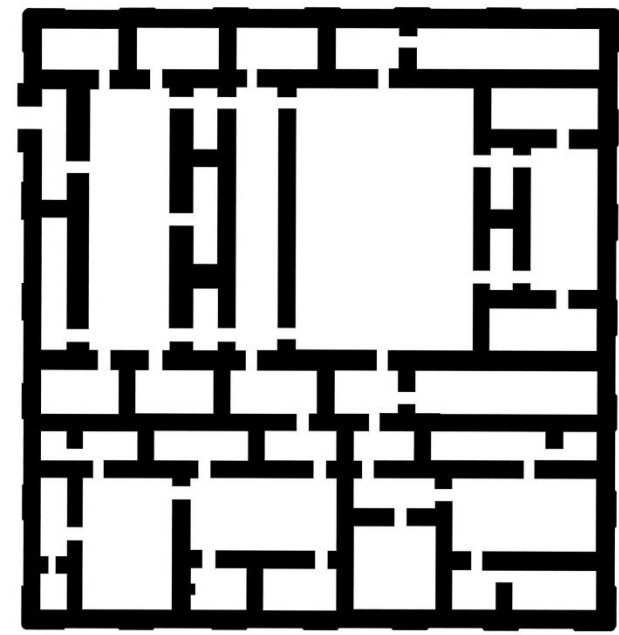
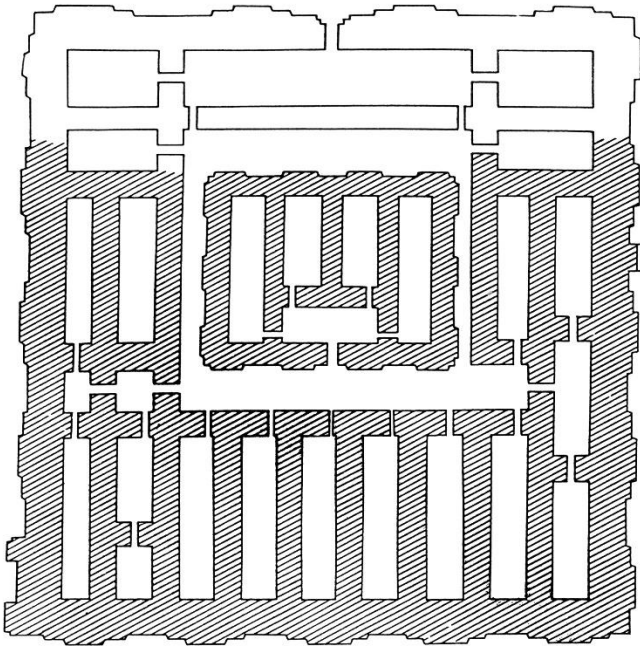
# ZIGGURAT FROM UR



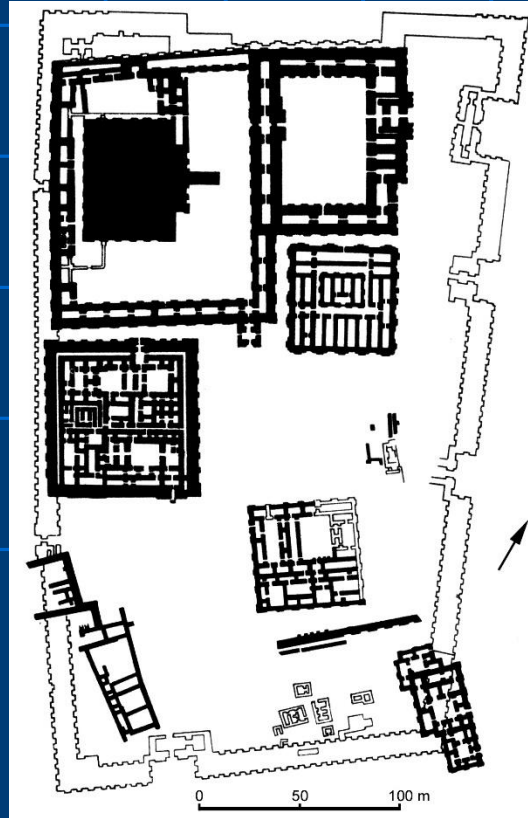
# ENHEDUANNA'S (Sargon's daughter) DISC



STOREHOUSE

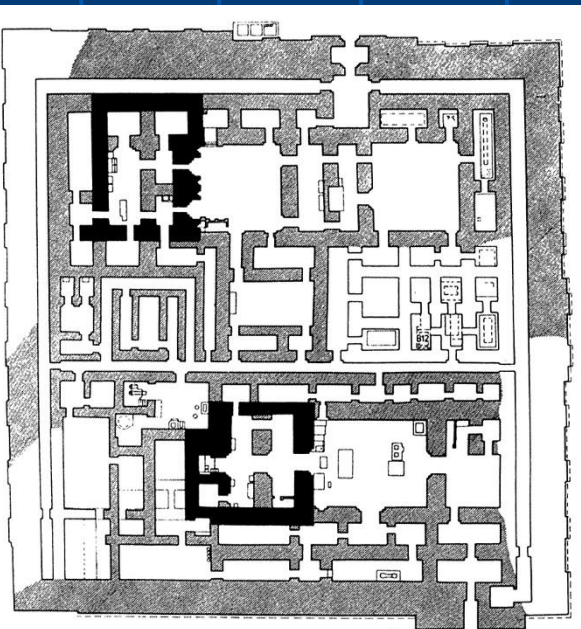


EHURSAG PALACE

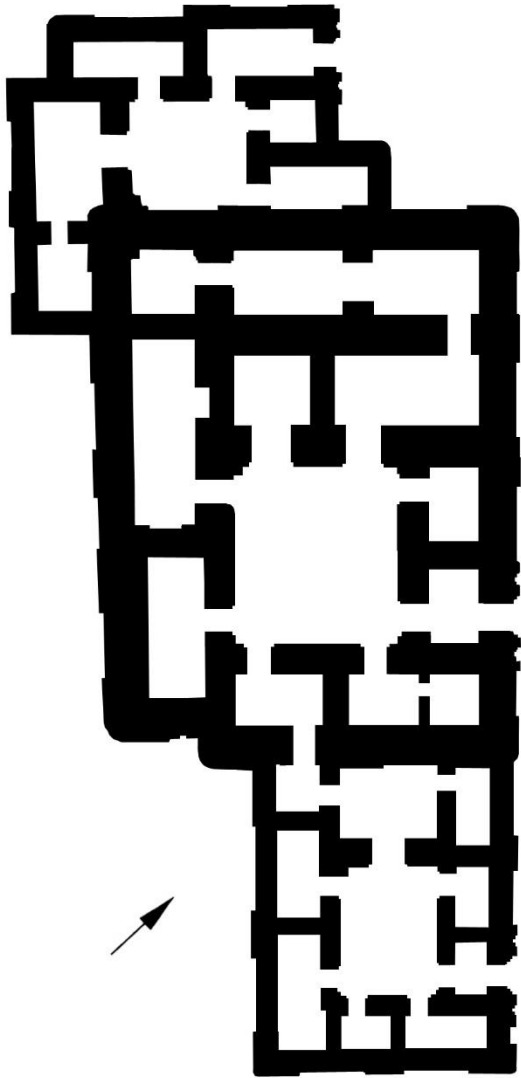


TEMENOS IN UR

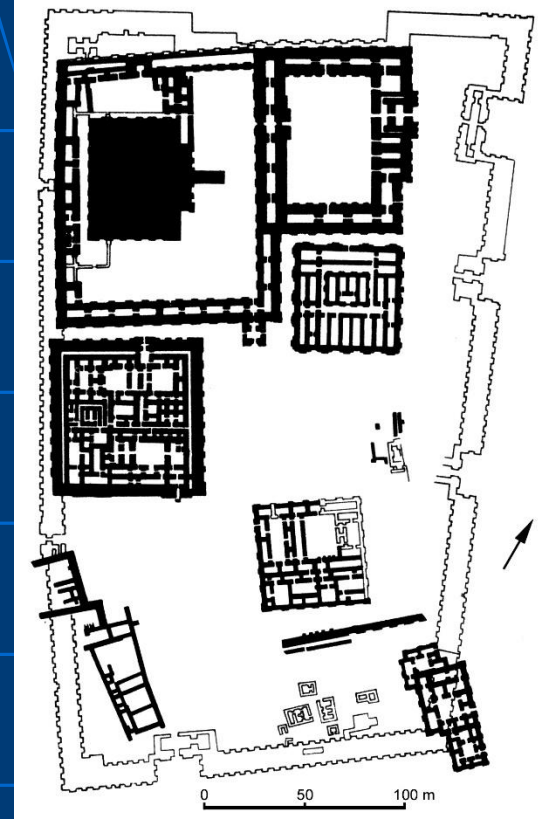
GIPARU



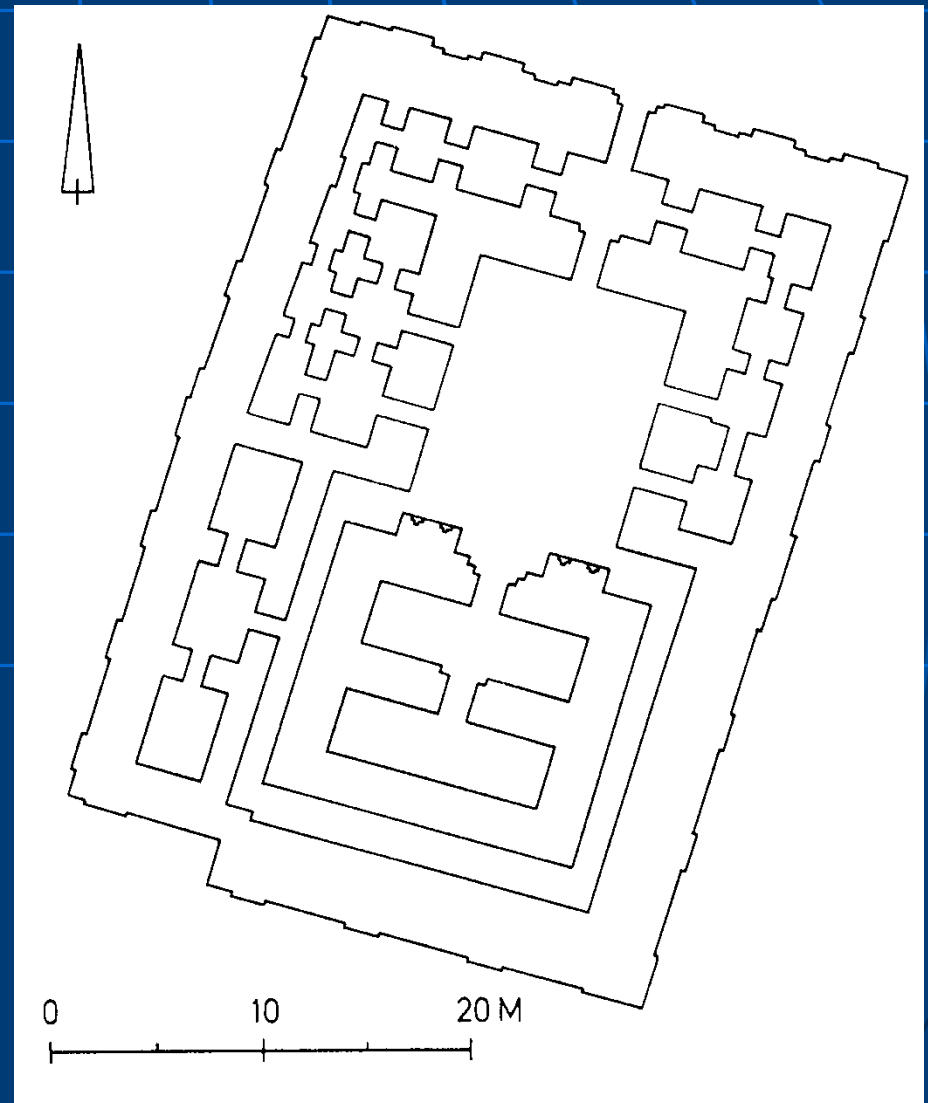
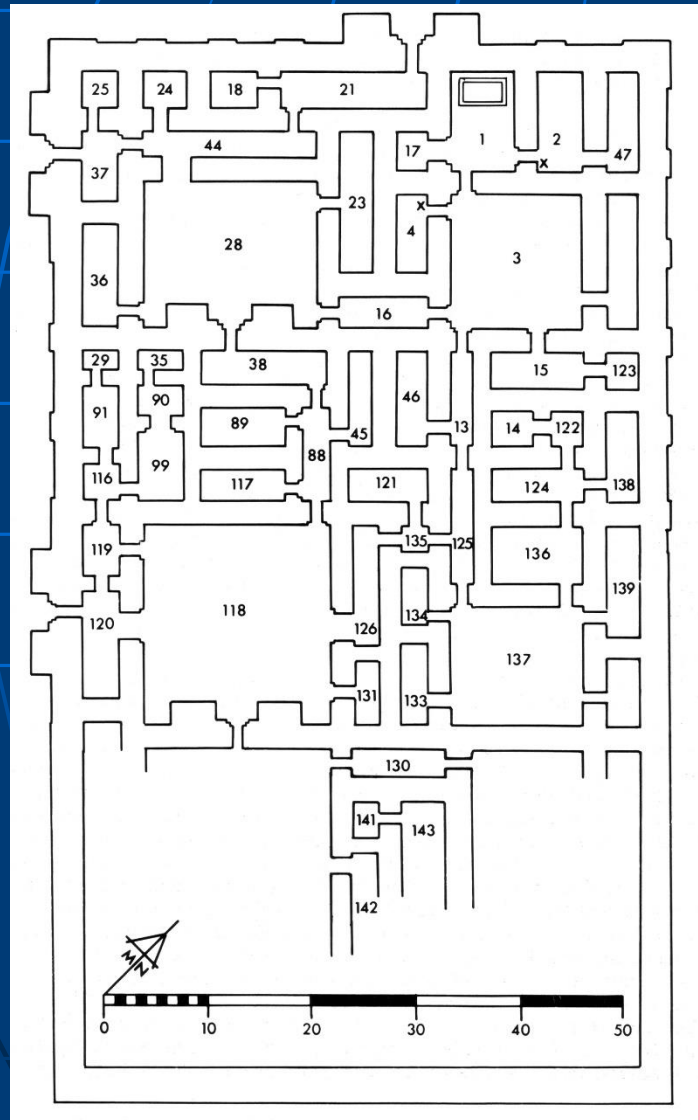
# MAUSOLEUM OF THE 3rd DYNASTY OF UR



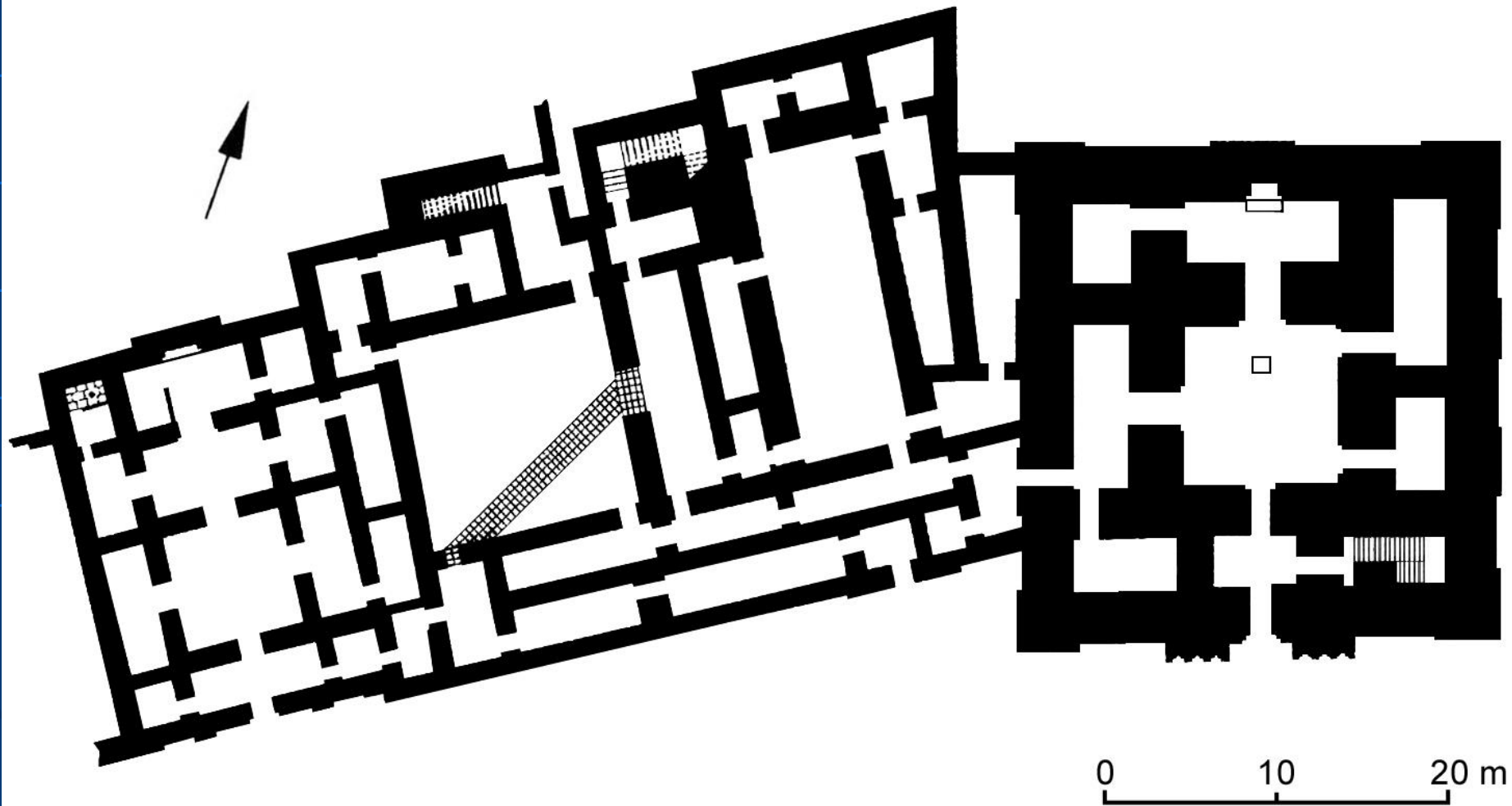
0 10 20 m



# INANNA'S TEMPLE FROM NIPPUR (left) ENKI'S TEMPLE FROM UR



# SHUSIN'S PALACE AND TEMPLE FROM ESHNUNNA (Tell Asmar)



# Presentation scenes of the Ur III period

