

# Náboženství a věda ARTS 011



- (...) What is there in places almost empty of Matter, and whence is it that the Sun and Planets gravitate towards one another, without dense Matter between them? Whence is it that Nature does nothing in vain; and whence arises all that Order and Beauty which we see in the World? . . . How came the Bodies of Animals to be contrived with so much Art and for what ends were their several Parts? Was the eye conceived without Skill in Opticks, and the Ear without Knowledge of Sounds? How do the Motions of the Body follow from the Will, and whence is the Instinct in Animals? . . . And these things being rightly dispatch'd, does it not appear from Phaenomena that there is a **Being incorporeal, living, intelligent, omnipresent**, who in infinite Space, as it were in his Sensory, sees the things themselves intimately, and thoroughly perceives them, and comprehends them wholly by their immediate presence to himself . . . And though every true Step made in this Philosophy brings us not immediately to the **Knowledge of the first Cause, yet it brings us nearer to it.**



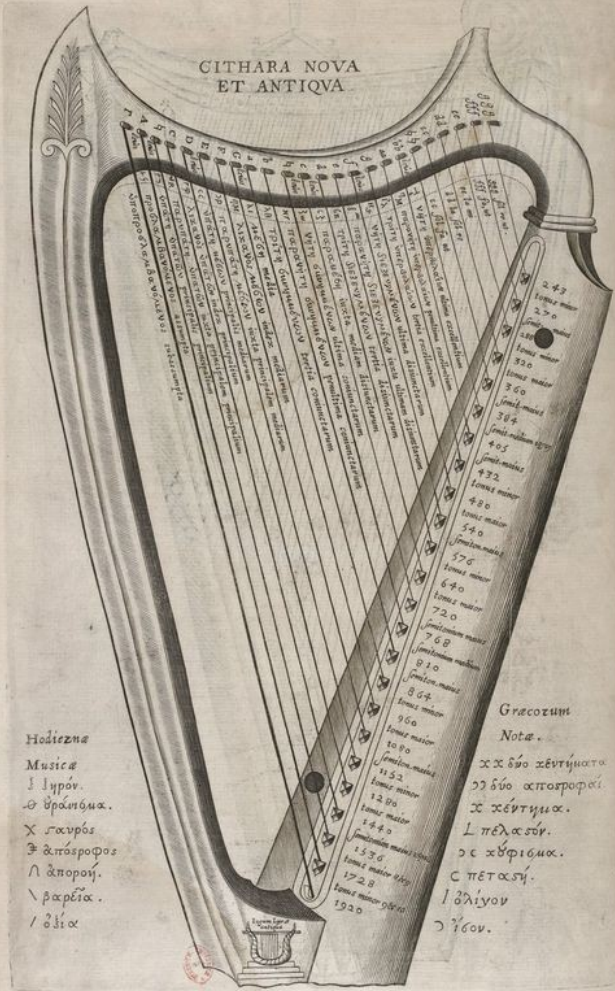
*Philosophicus cum suis rotis elementalibus*  
*Femina melancholica.*

*Femina melancholica.* *Femina pituitosa.*

The diagrams are arranged in a cluster. Each diagram features a five-pointed star (pentagram) inscribed within a circle. The stars are drawn with varying line thicknesses and orientations. Various symbols, including the female symbol (♀), the male symbol (♂), and letters like 'h', 'z', 'm', 'a', 'b', 'c', 'd', 'e', 'f', 'g', 'i', 'k', 'l', 'n', 'o', 'p', 'q', 'r', 's', 't', 'u', 'v', 'w', 'x', 'y', 'z' are scattered around and within the stars. Some diagrams also contain smaller circles or other geometric shapes.

*Virgula choleric.* *Masculin sanguin.*

CITHARA NOVA  
ET ANTIQVA

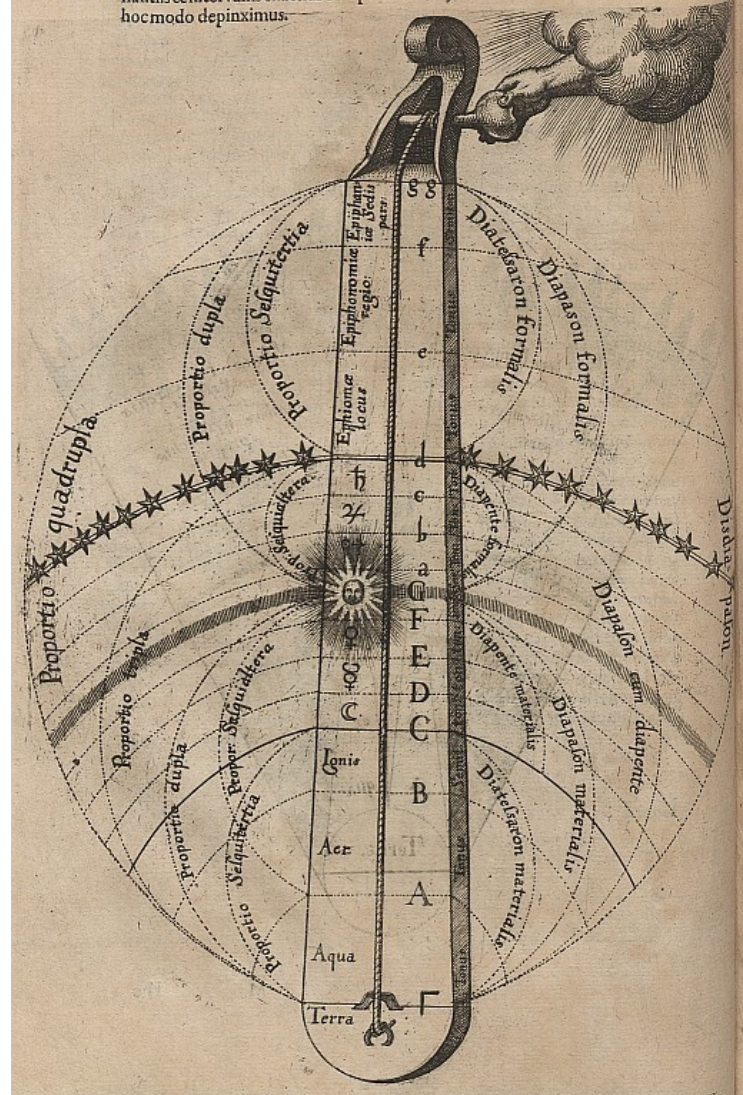


Hodiezua  
Musica  
I ἴσον.  
Θ ὄρασιμα.  
X γαυρός  
Ξ ἀπόστροφος  
Λ ἀποροή.  
V βαρέτια.  
I ὀβία

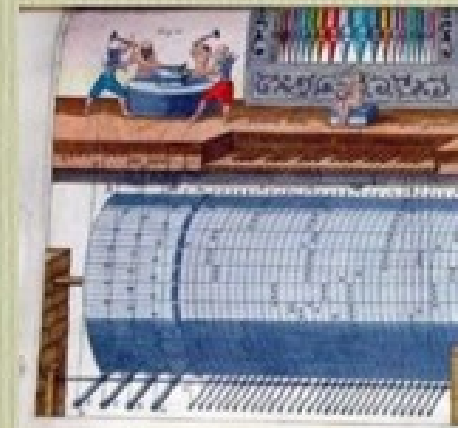
Græcozum  
Note.  
XX δύο κέντηματα  
Ϟ δύο αποστροφάι  
X κέντημα.  
L πελασόν.  
Ϟ κέρτιμα.  
C πετασή.  
I ὀλίγον  
Ϟ ἴσον.

Source gallica.bnf.fr / Bibliothèque nationale de France

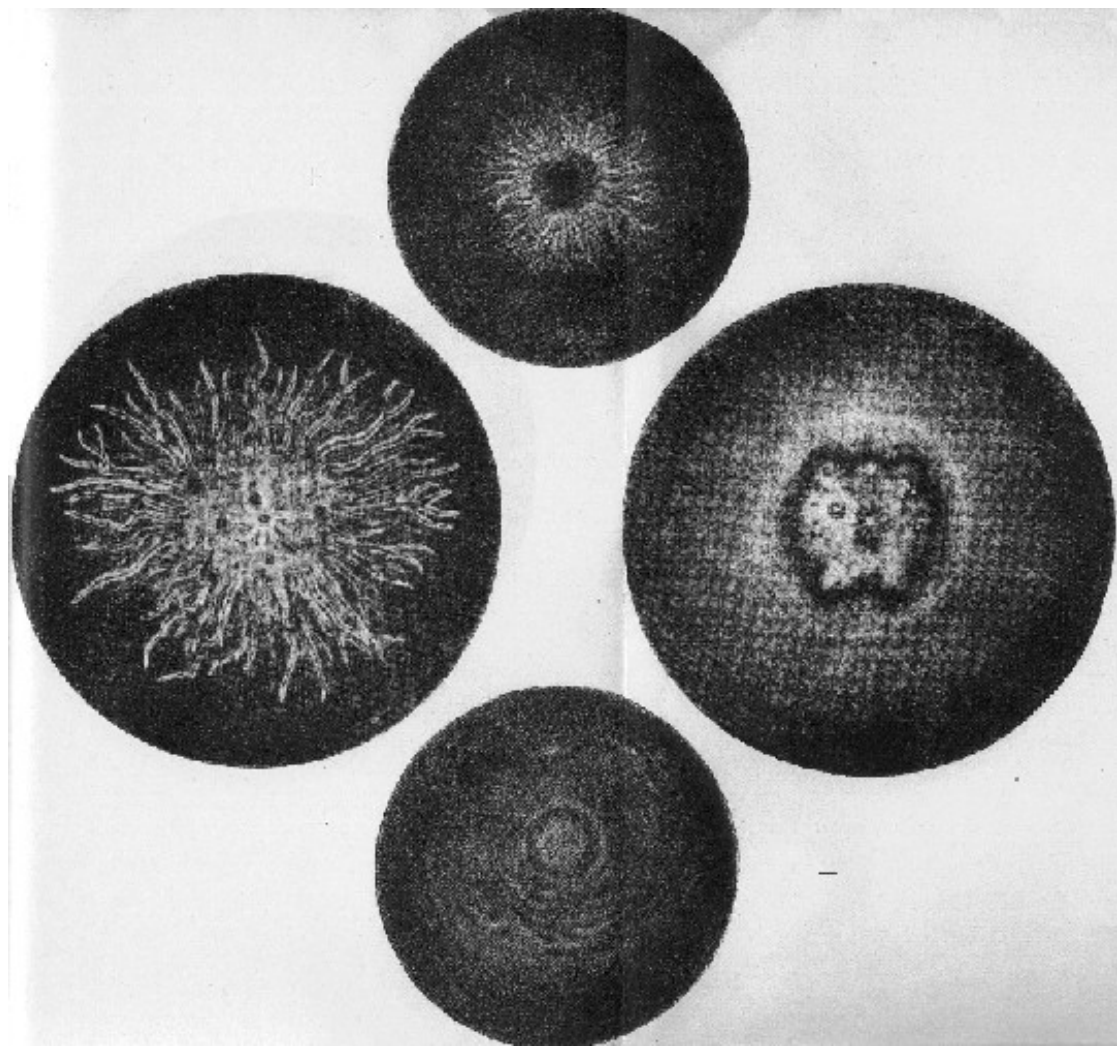
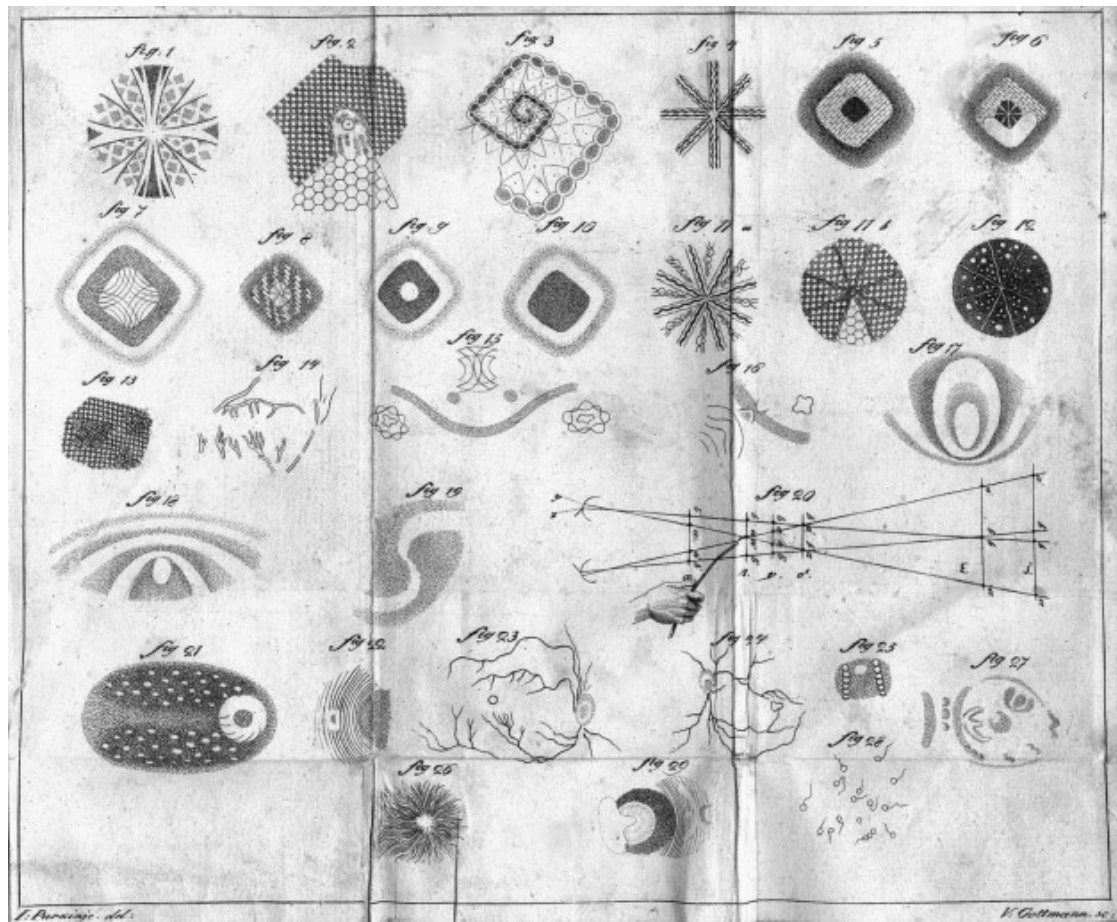
Hic autem monochordum mundanum cum suis proportionibus, consonantiis & intervallis exactius composuimus; cujus motorem extra mundum esse hoc modo depinximus.



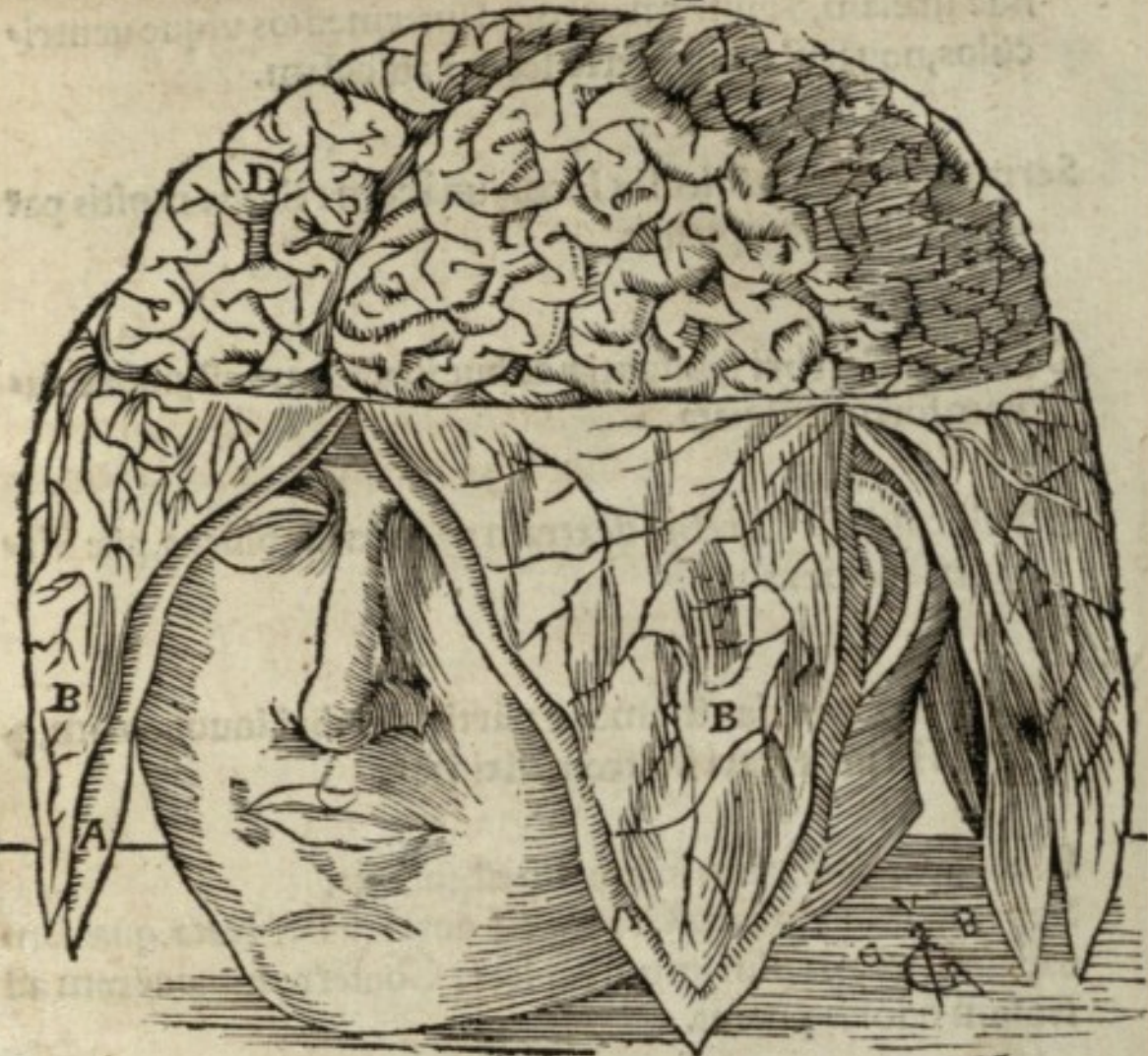
Quelle: Deutsche Fotothek



**Musurgia Universalis : Clavecin oculaire**  
**Musurgie : art d'employer à propos les consonnances & disson**



E



explicatione.





Poškození  
(nervů, mozku,  
smysl. orgánů)

démonické  
působení

metaforická  
hluchota