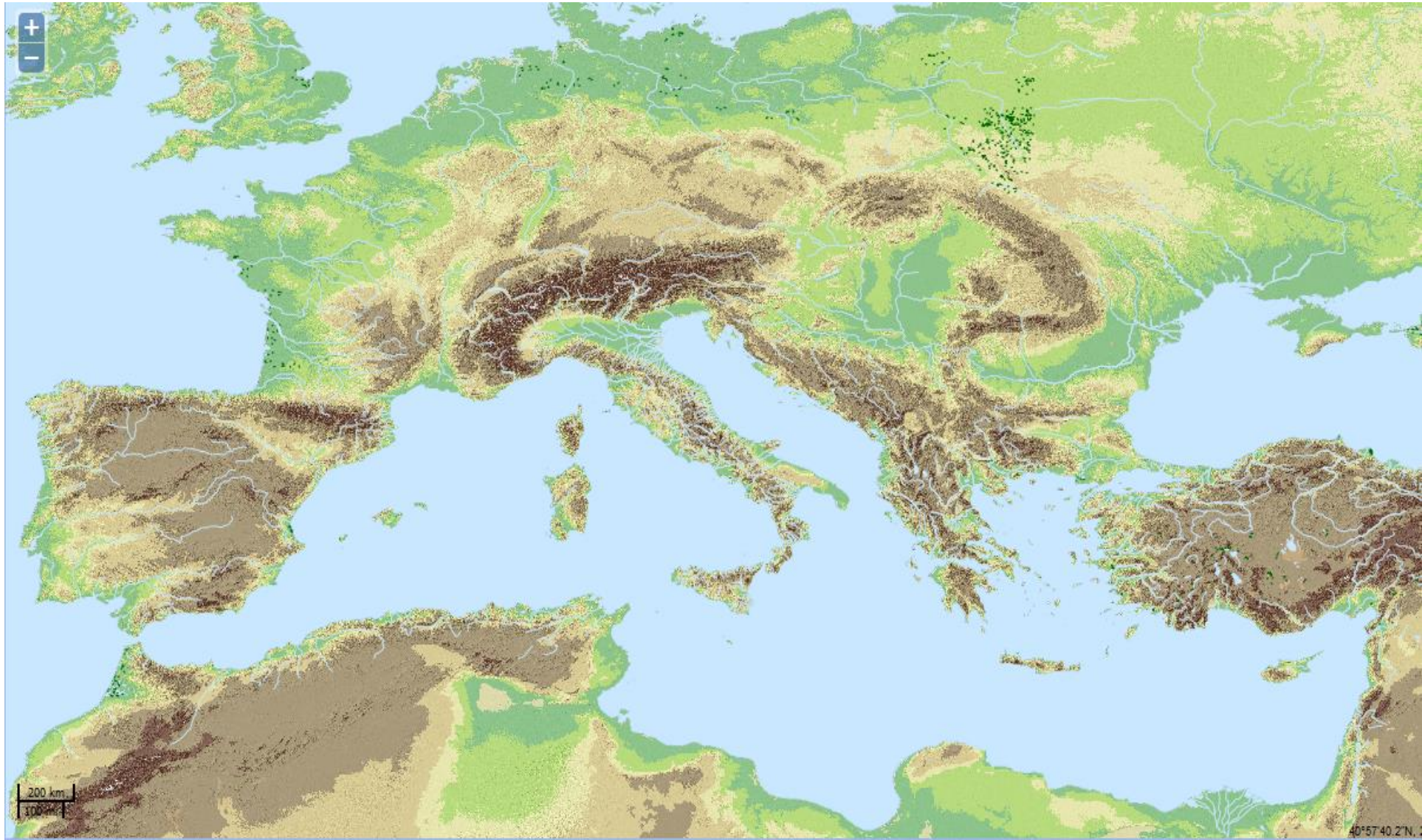


MEDITERRANEAN AND CENTRAL EUROPE IN THE BRONZE AND IRON AGES

jan kysela
jan.kysela@hotmail.com

MEDITERRANEAN AND CENTRAL EUROPE

... IN THE IRON AGE / BEFORE CHRIST / IN PRE-ROMAN PERIOD



MEDITERRANEAN AND CENTRAL EUROPE IN THE BRONZE AND IRON AGES

why?



Oscar Montelius

Gero von Merhard

Wolfgang Kimmig

Otto-Hermann Frey

Venceslas Kruta

Marcus Egg

Anne-Marie Adam

Jan Bouzek

Brian Sheffton

Friedrich Wilhelm von Hase

Renato Peroni

Giovannangelo Camporeale

Alessandro Naso

Martin Guggisberg

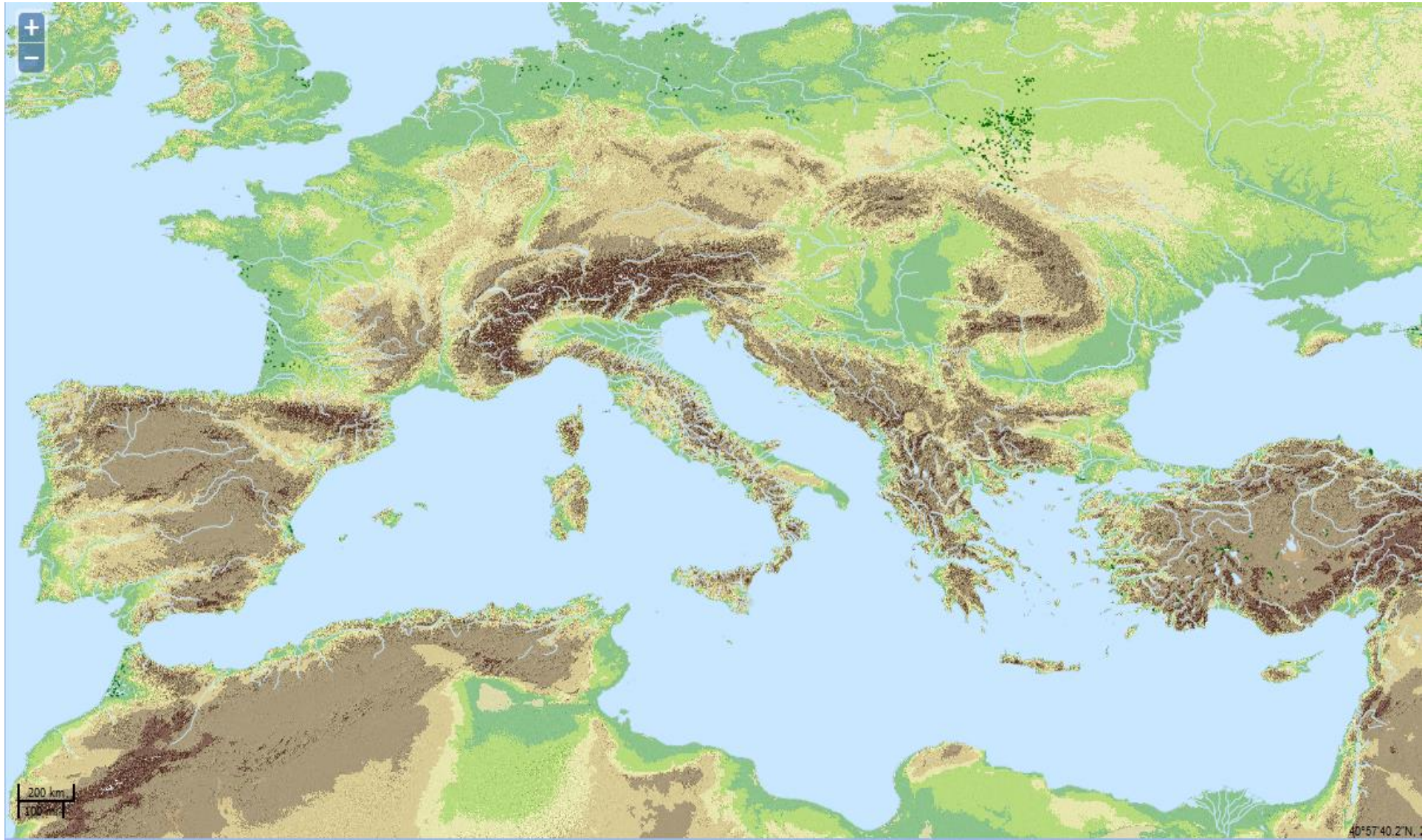
Stéphane Verger

Holger Baitinger

MEDITERRANEAN AND CENTRAL EUROPE IN THE BRONZE AND IRON AGES

what?

- to contextualise (Mediterranean) written records about the Transalpine area
- to trace the proofs of contacts between the Mediterranean (= ‚the classical world‘) and the Transalpine area
- to observe the Transalpine development through the Mediterranean models



I. Greek and Roman written sources on central Europe BC

the mentions are as a rule:

- not preserved (Posidonius)
- few
- compiled (Livy, Pliny, Plutarchus)
- not contemporary with the events (anything up to Caesar)
- not contemporary among themselves (the Hercynian forest)
- mediated (often many times) (Posidonius → Strab, Plutarch)
- contradictory (the Hercynian forest)
- about something completely different than we would like to (Strab, Plin ,Paus)
- misunderstood (Herodotus)
- intentionally twisted (Livy, Caesar)
- stereotypical (just everybody...)

just like in most of Italy.. and Greece...

.... only worse.

I. Greek and Roman written sources on central Europe BC

[Hecateus]

Herodotus

[Pytheas]

(pseudo)Skylax

Polybius

[Posidonius]

Caesar

Strabo

Livy

Plutarch

Ovid

Ptolemy

Velleius Paterculus

Tacitus

**II. proofs of contacts between Mediterranean Transalpine area
-the “imports“**



II. proofs of contacts between Mediterranean Transalpine area -the “imports“

What is an ,import‘?

What does the „importness“ of an artefact mean?

What type of contact does it attest?

....

G. PIERREVELCIN: Ke studiu dálkových kontaktů v pozdní době laténské.

Archeologické Rozhledy 61/2 (2009), 183-217.

-Les relations entre la Boheme et la Gaule du IVe au Ier siècle avant J.-C. - Vztahy mezi Čechami a Galií ve 4. až 1. stol. př. Kr. Dissertationes Archaeologicae Brunenses Pragensesque 12. Praha – Brno 2012, 33-41.

II. proofs of contacts between Mediterranean Transalpine area -the “imports“

What is an ,import‘?

visible	invisible	
material products	technologies, techniques	know -how
semiproducts	approaches and strategies	
raw materials	social conduct	behaviour
manufacturing facilities	ritual conduct	
visual art	customs	
people and animals	ideology	

N. VENCLOVÁ: External contacts - visible and invisible.

In: SALAČ – LANG eds: *Fernkontakte in der Eisenzeit*. Praha 2000, 72-82.

II. proofs of contacts between Mediterranean Transalpine area -the “imports“

What is an ,import‘?

	visible	invisible	
textiles, foodstuffs	material products (→)	technologies, ← techniques	know -how
	semiproducts	approaches and ← strategies	
amber, coral metals	raw materials →	social conduct	behaviour
	manufacturing facilities	ritual conduct ←	
	visual art	← customs	
how to recognise them?	people and animals →		ideology

...and their material manifestations

N. VENCLOVÁ: External contacts - visible and invisible.

In: SALAČ – LANG eds: *Fernkontakte in der Eisenzeit*. Praha 2000, 72-82.

II. proofs of contacts between Mediterranean Transalpine area -the “imports“

an „import“... and what else?

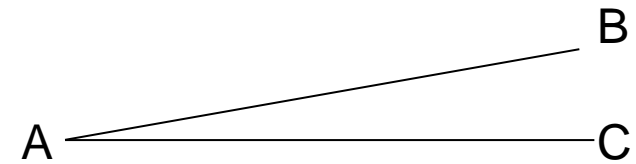
- context
- function?
- social status?
- complementarity with local products?
- chronology of its deposition
-

- ⇒ How many?
- ⇒ To what extent standardised / pell-mell?
- ⇒ How does my region compare with the neighbouring regions in numbers and usage?

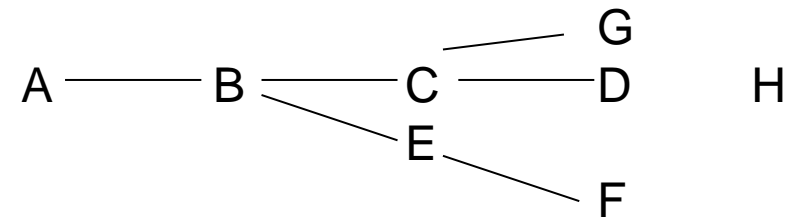
II. proofs of contacts between Mediterranean Transalpine area -the “imports“

What **type of contact** do the imports attest?

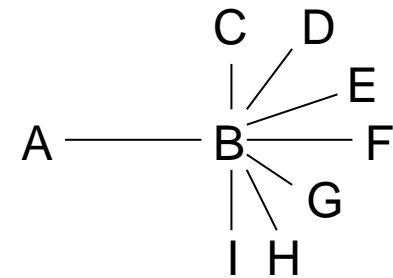
-direct contact A-B?



-relay movement?



-local distribution?



...

II. proofs of contacts between Mediterranean Transalpine area -the “imports“

Mechanisms of artefact mobility

-trade, exchange

-gift exchange (personal, diplomatic...)

-personal mobility

– mass migration (with many different possible variations)

– individual mobility - exogamy

- mercenaries

- tradespeople, artisans, „travellers“

-booty...

II. proofs of contacts between Mediterranean Transalpine area

-invisible imports – innovations

-really from the Mediterranean? (no intermediaries? They could have come up with the same idea independently?)

-difficult to quantify

-by their adoption and spread, external innovation at a certain point stop being foreign....

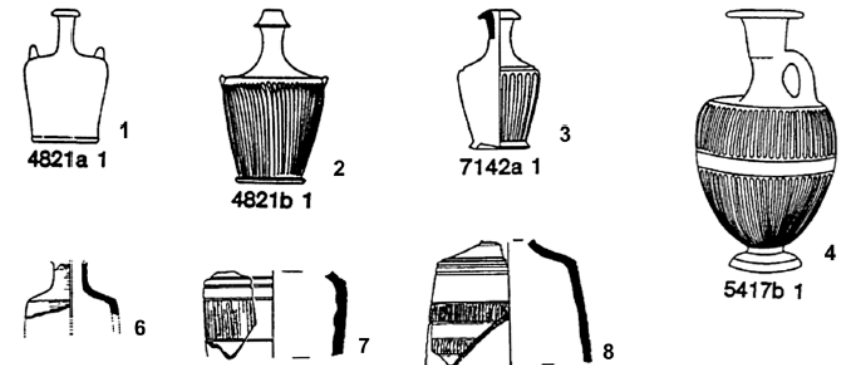
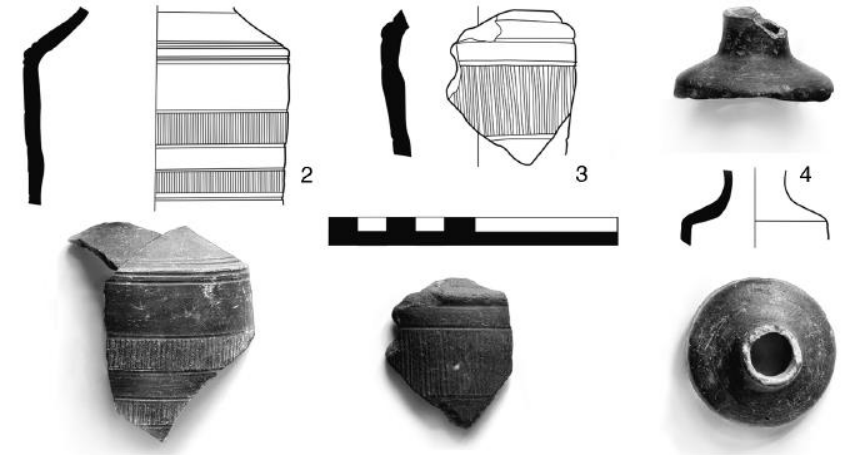
Hahn 2004 : Material appropriation – objectification – incorporation – transformation

... if you really need to have an explanation for everything and don't worry that it does not reflect reality

II. proofs of contacts between Mediterranean Transalpine area

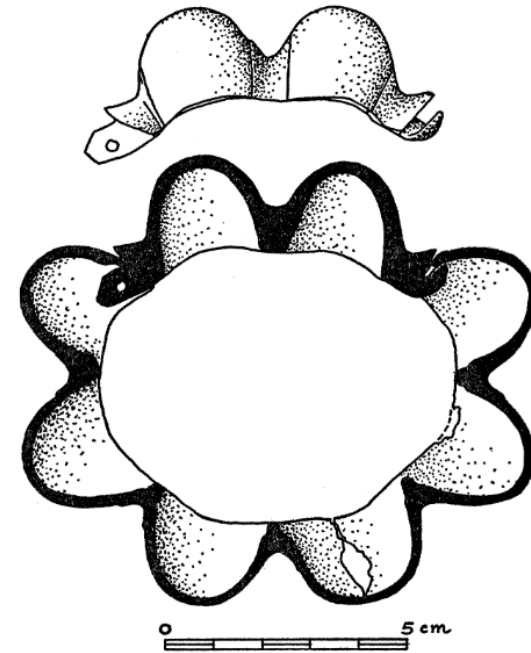
-the "imitations"

style vs. form vs. function



II. proofs of contacts between Mediterranean Transalpine area -the “imports“

-attention – if contacts seem to have existed in direction only, you should be suspicious



III. Mediterranean as a mirror of processes taking place in Central Europe

-e.g. the 'princeley society'

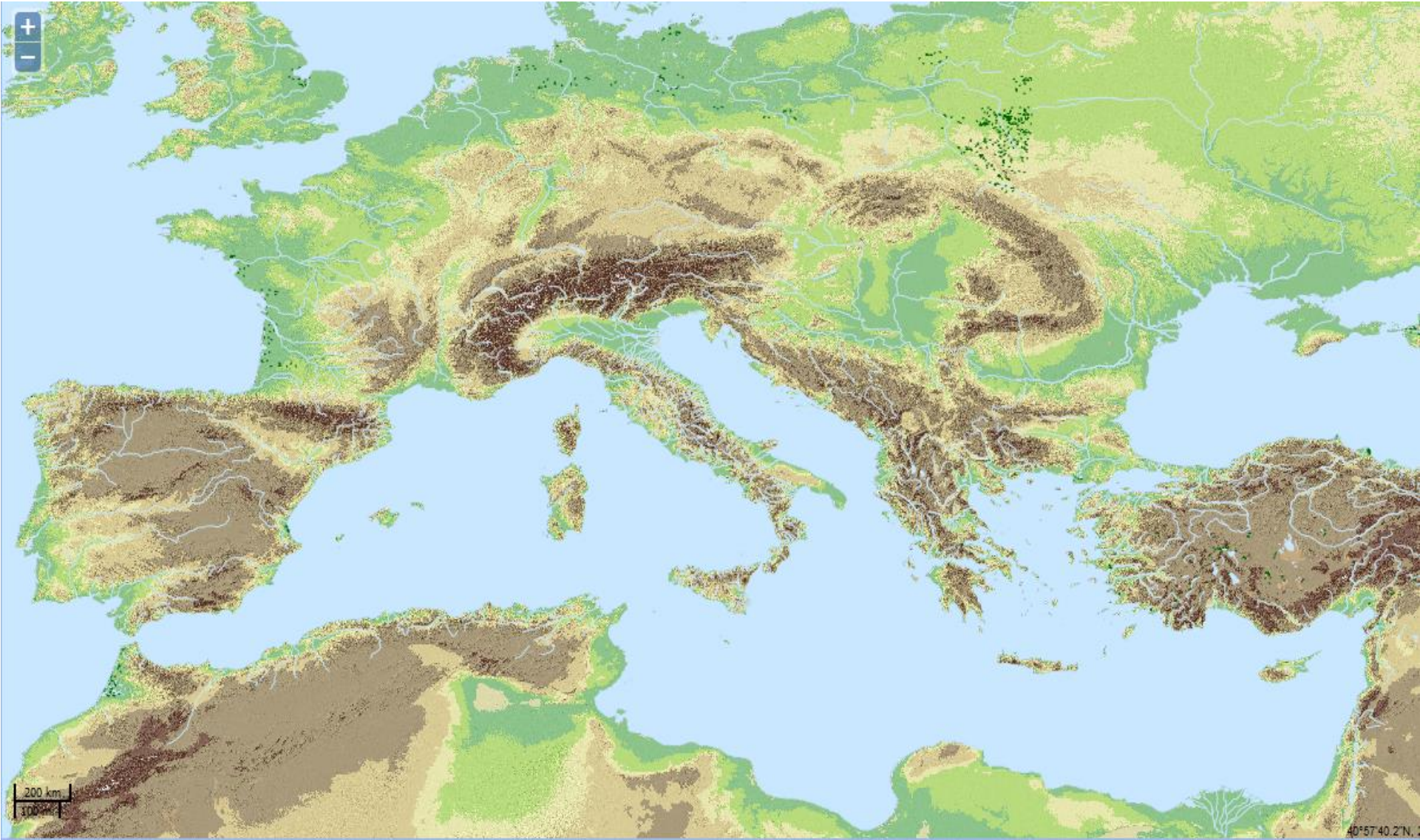
....

....

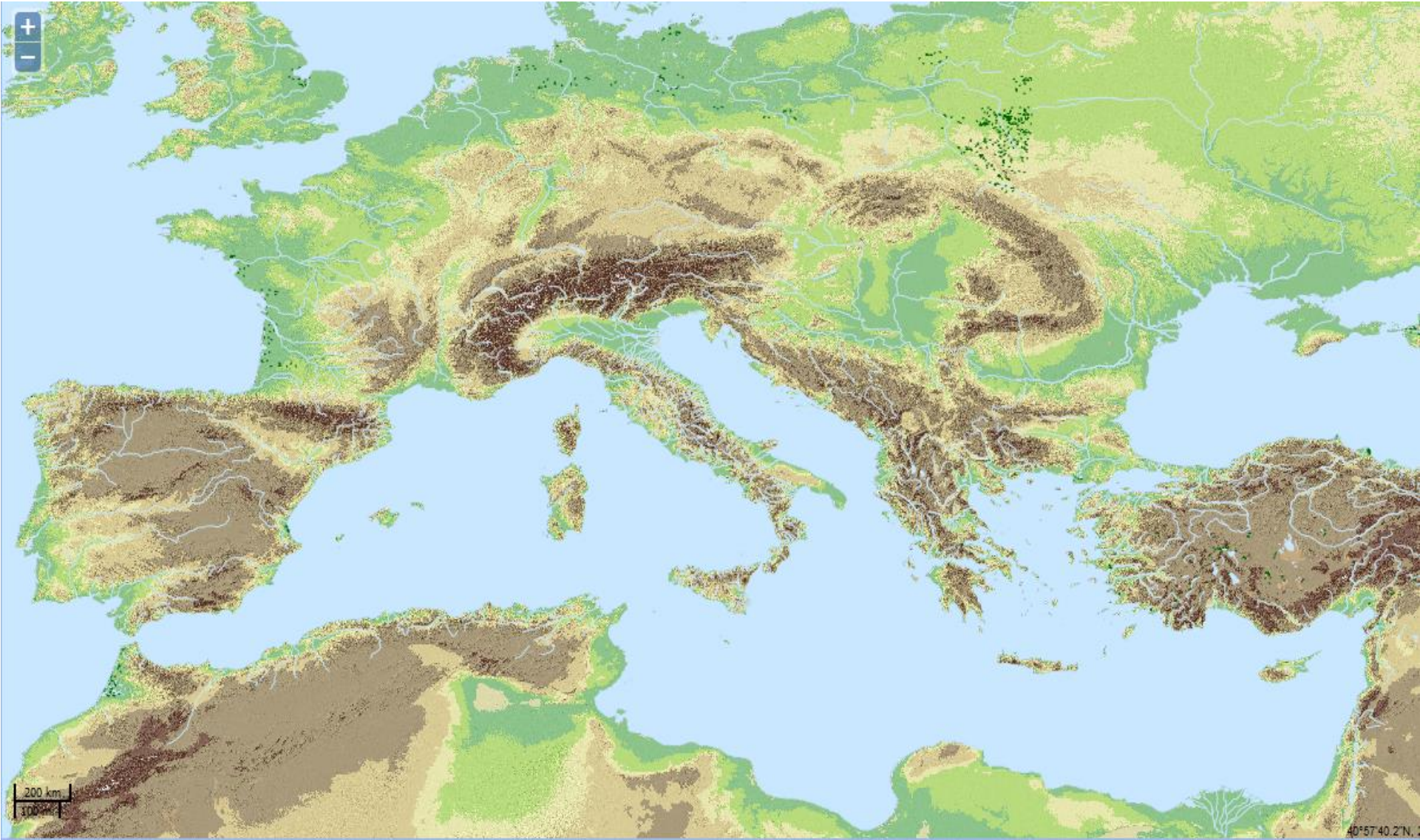
.... with all caveats they deserve.



- to contextualise the (Mediterranean) written records about the Transalpine area
 - to trace the proofs of contacts between the Mediterranean and the Transalpine area
 - to observe the Transalpine development through the Mediterranean models
- => to try to understand the nature and degree of mutual contact between them**



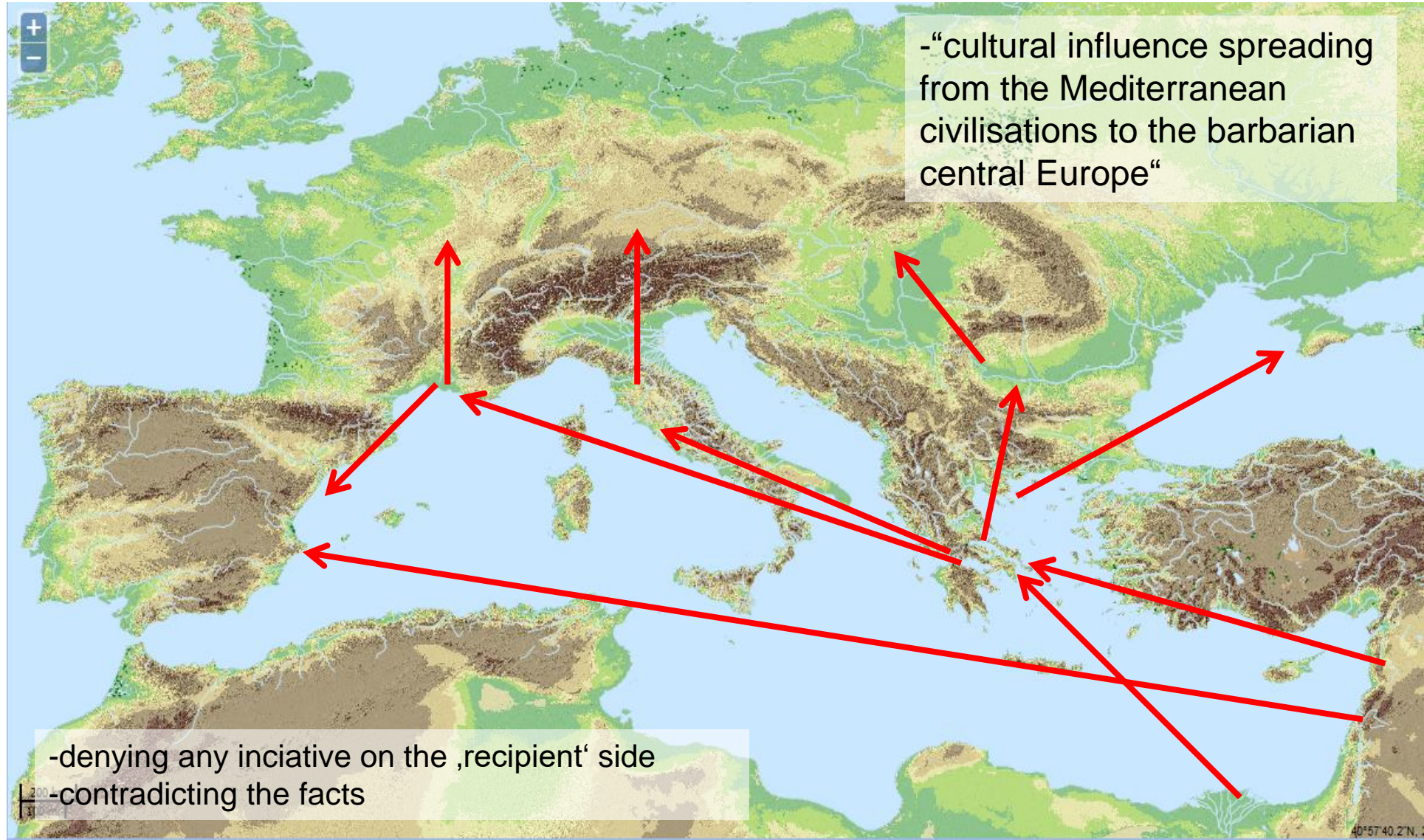
- ex oriente (meridie) lux* ?
- world systems – the Mediterranean core and the European periphery
- networks and small worlds



-ex oriente (meridie) lux ?

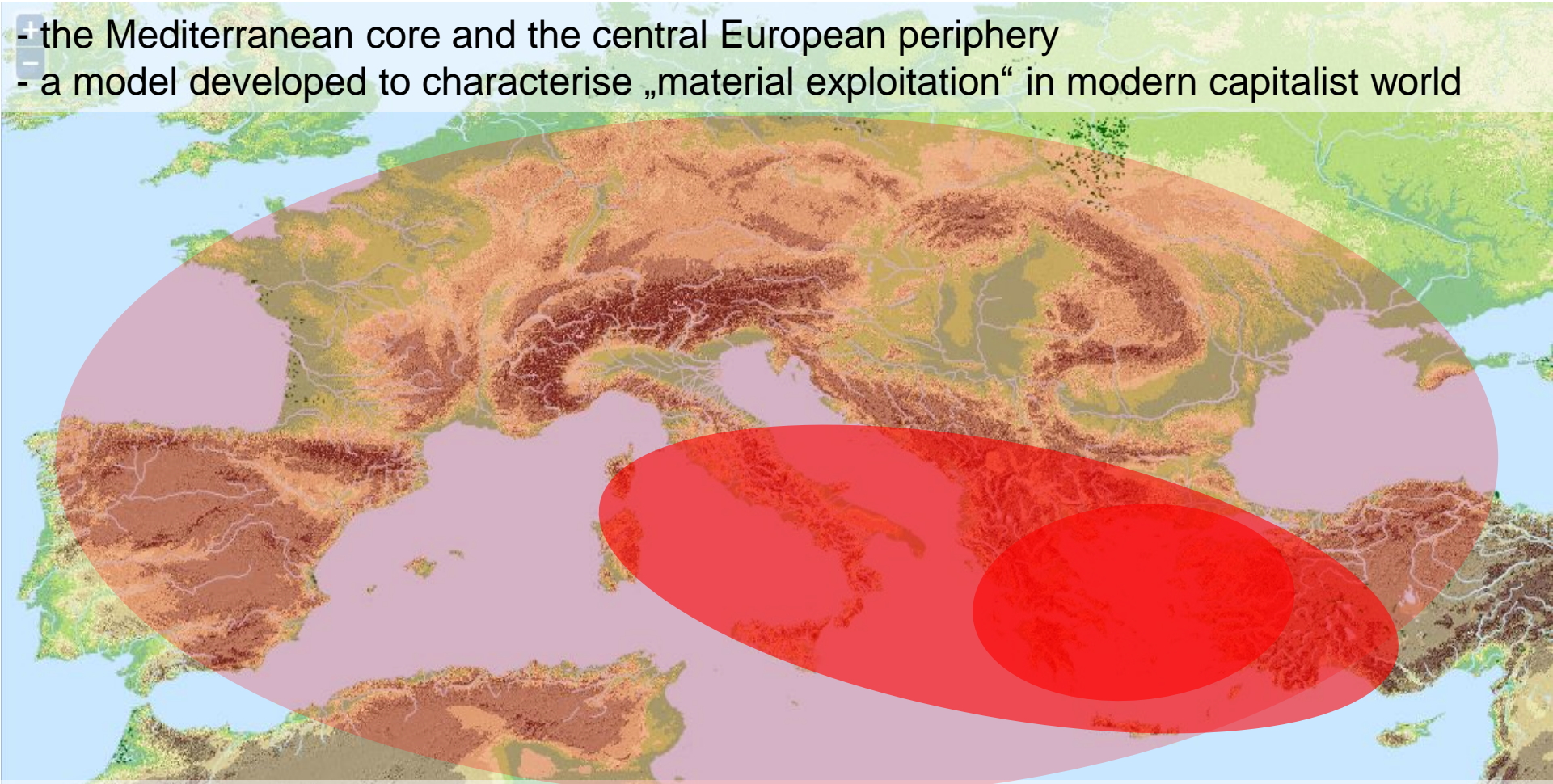
-world systems – the Mediterranean core and the European periphery

-networks and small worlds



- *ex oriente (meridie) lux* ?
- **world systems**
- networks and small worlds

- + the Mediterranean core and the central European periphery
- a model developed to characterise „material exploitation“ in modern capitalist world

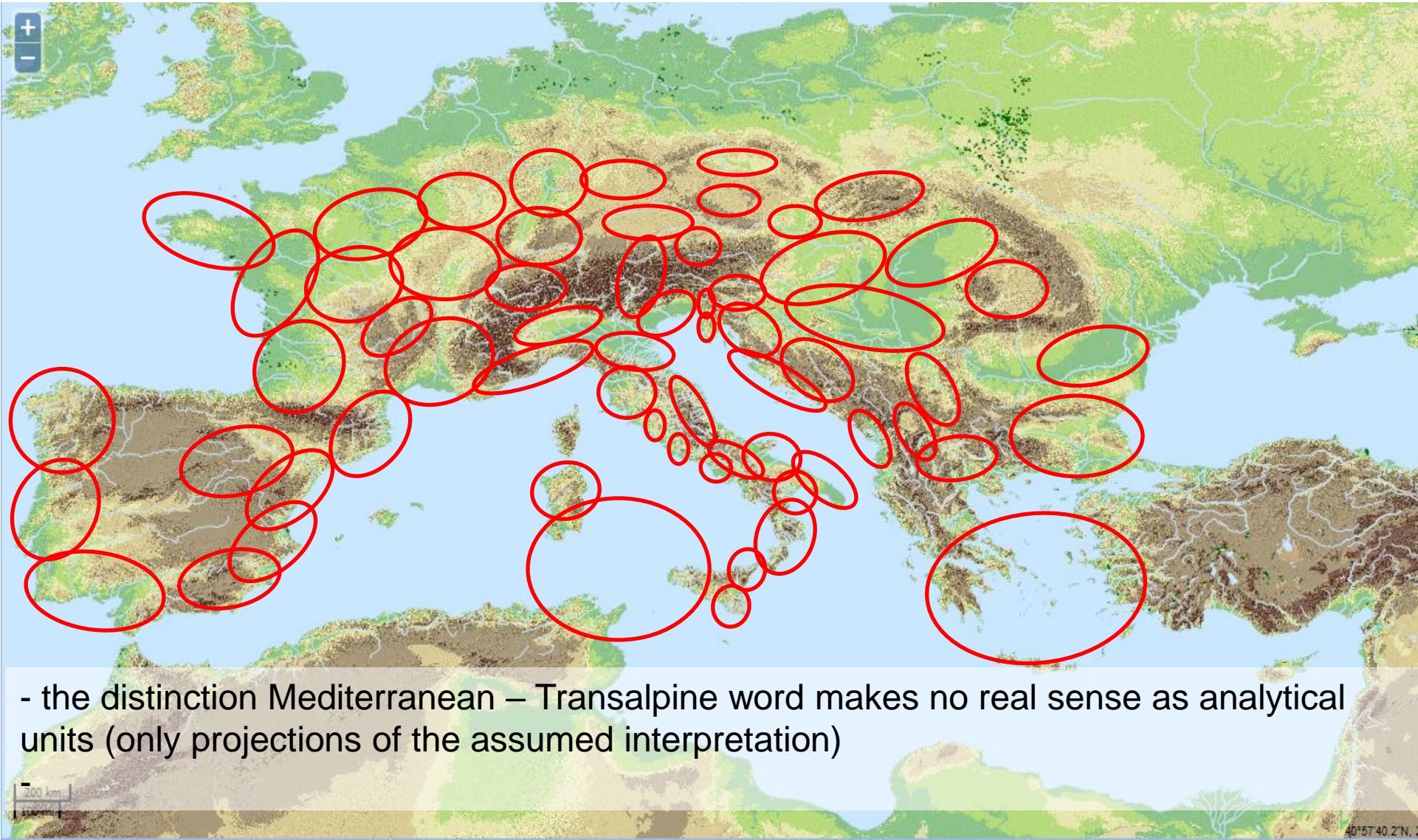


- the same nonsense as before....
- in the pre-Roman world there was hardly any power dominance of the supposed core over the supposed periphery: rather a ‚distant parity‘ and selectivity in the degree and form of influence

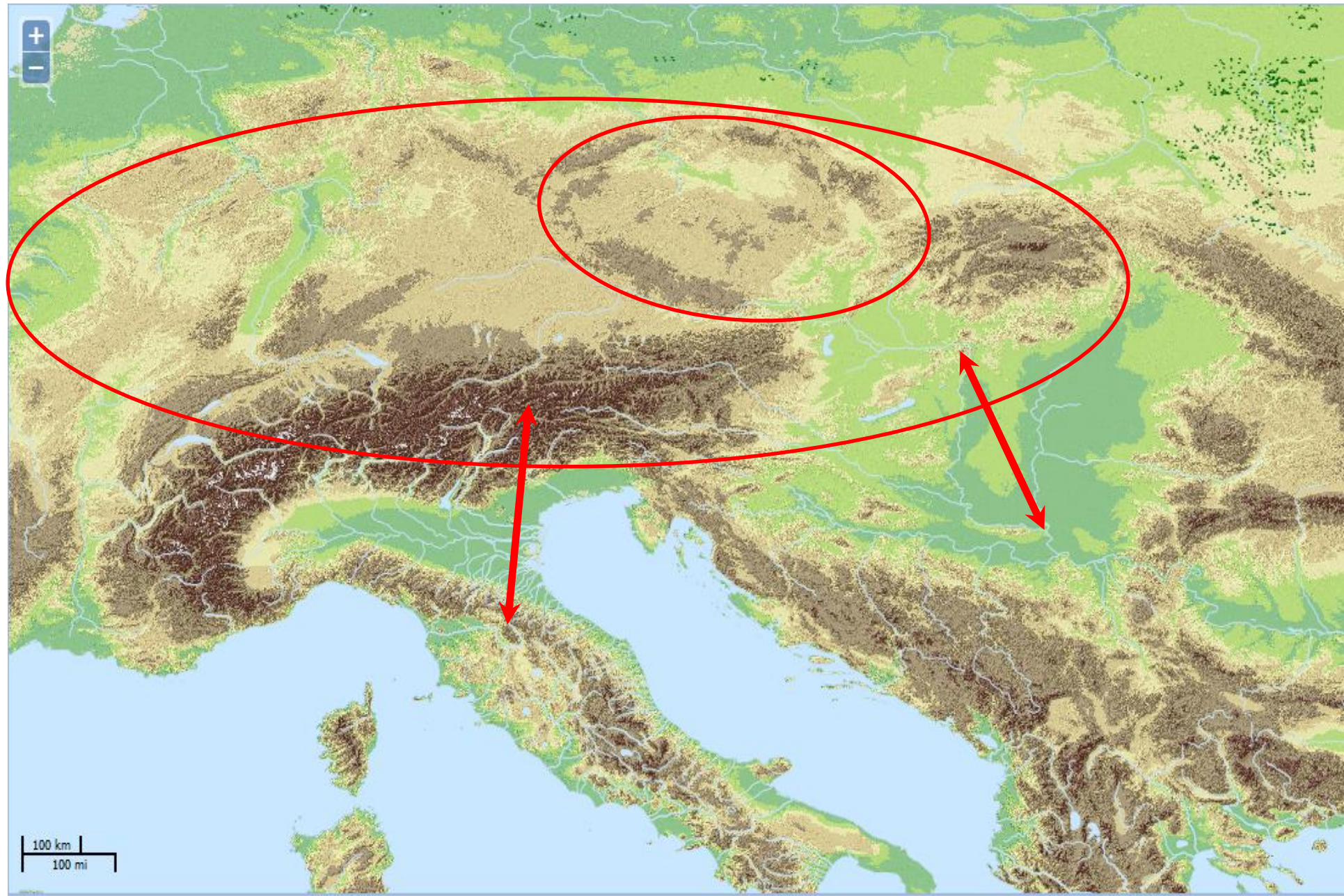
-*ex oriente (meridie) lux* ?

-world systems – the Mediterranean core and the European periphery

-networks and small worlds



WHEN and from WHERE?





STUDIA HERCYNIA XV/1

STUDIES IN MEDITERRANEAN ARCHAEOLOGY
VOL. XXIX

THE AEGEAN, ANATOLIA AND EUROPE:
CULTURAL INTERRELATIONS
IN THE SECOND MILLENNIUM B. C.

BY
JAN BOUZEK

CHARLES UNIVERSITY
PRAGUE

GÖTTINGEN 1997
PAUL BREITENBURGER VERLAG

STUDIES IN MEDITERRANEAN ARCHAEOLOGY

VOL. XXIX

GREECE, ANATOLIA AND EUROPE:
CULTURAL INTERRELATIONS
DURING THE EARLY IRON AGE

BY

JAN BOUZEK

GÖTTINGEN 1997
PAUL BREITENBURGER VERLAG

STUDIA HERCYNIA XV/1

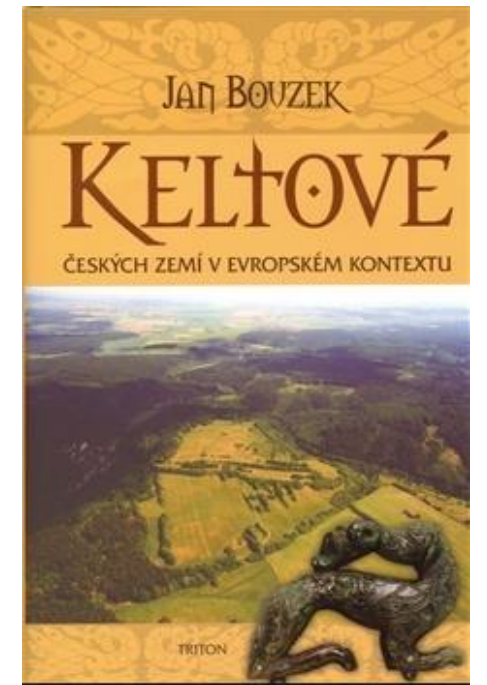
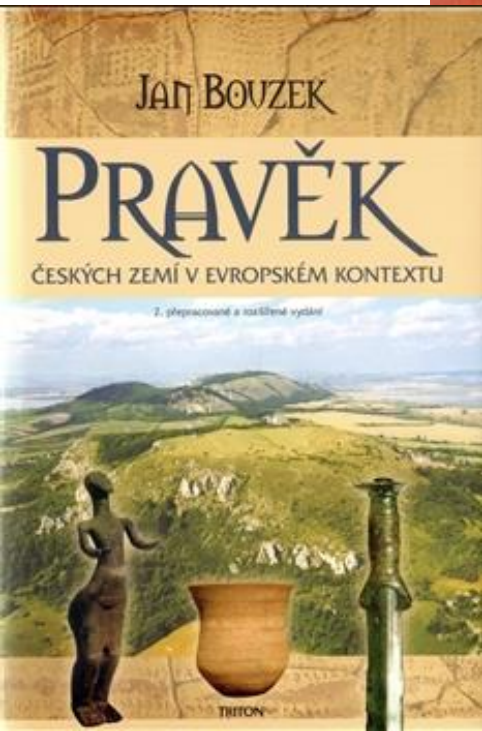
Jan Bouzek

PREHISTORY OF EUROPE
AS SEEN FROM ITS CENTRE

Czech lands from Paleolithic to the end
of the La Tène period in European context



PRAGAE 2011



Keltové

Čechy v 8. až 1. století před Kristem



2010
NÁRODNÍ
MUZEUM
let

THE CELTS

Bohemia from the 8th century to the 1st century BC

Editors

Jiří Militký – Jan Kysela – Marika Tisucká

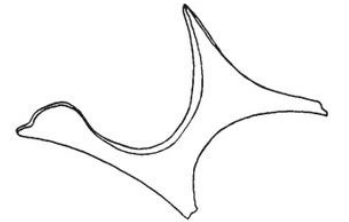
Collective of authors

Zdeněk Beřel – Viktoria Čtůňová – Alžběta Daněšová – Miroslav Dobitčinský – Petr Holodský
Miroslav Chytráček – Jan Kysela – Kateřina Lorenčová – Tomáš Mangel – Jiří Militký
Pavel Šanlöt – Petra Štránská – Petr Velemínský – Natálie Venclová

NATIONAL
MUSEUM

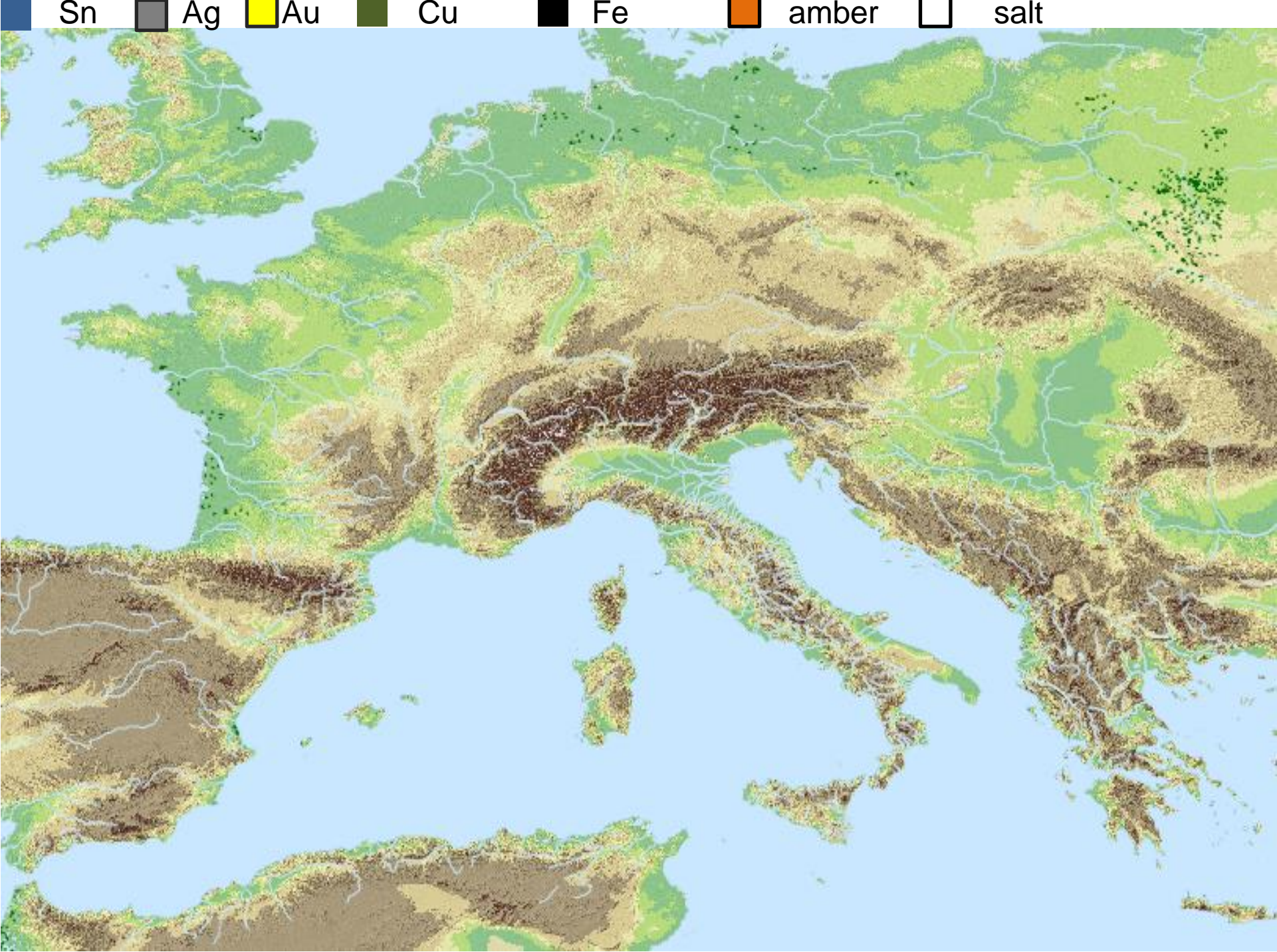
THINGS AND THOUGHTS

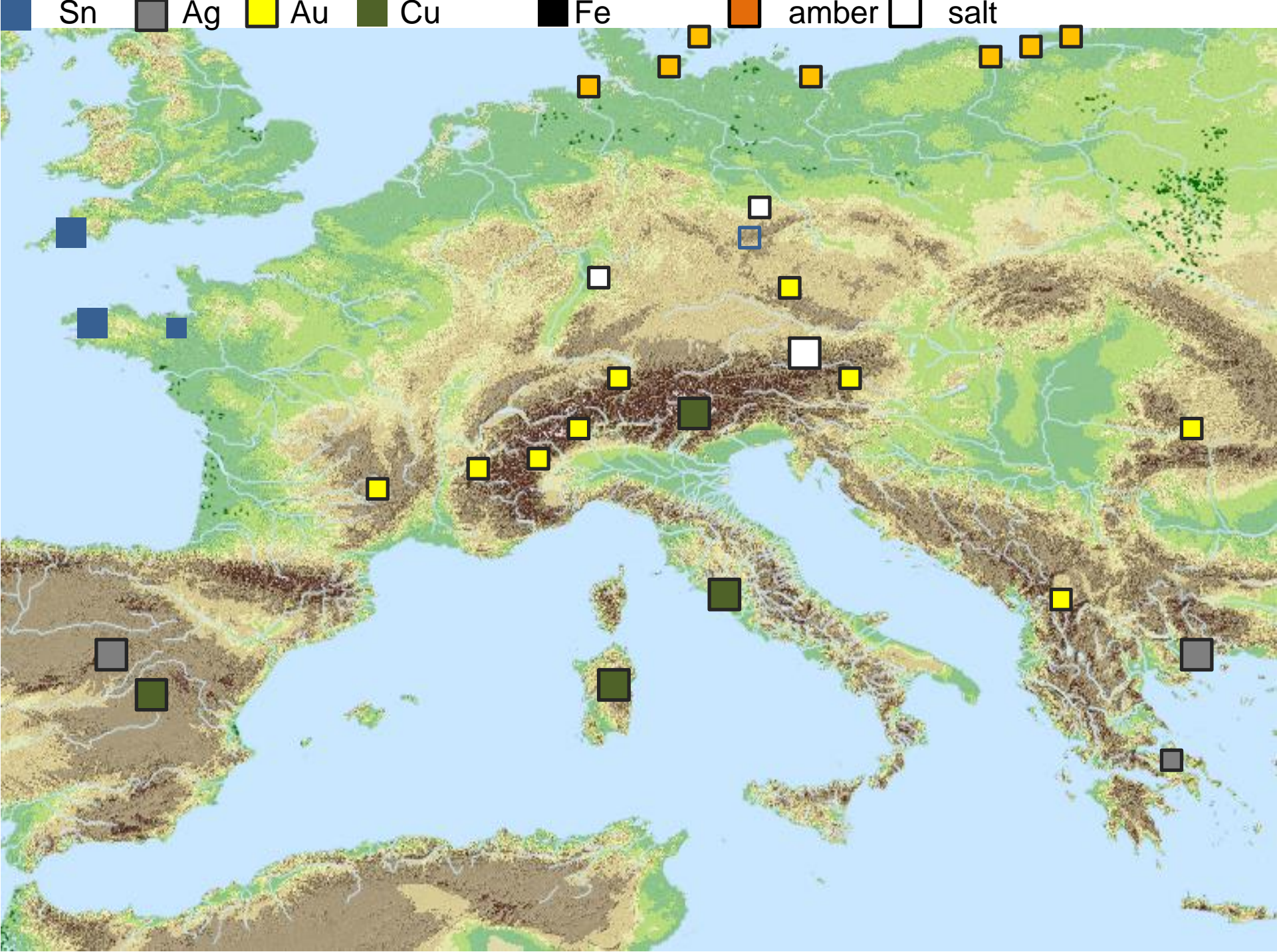
Central Europe and the Mediterranean
in the 4th-1st centuries BC

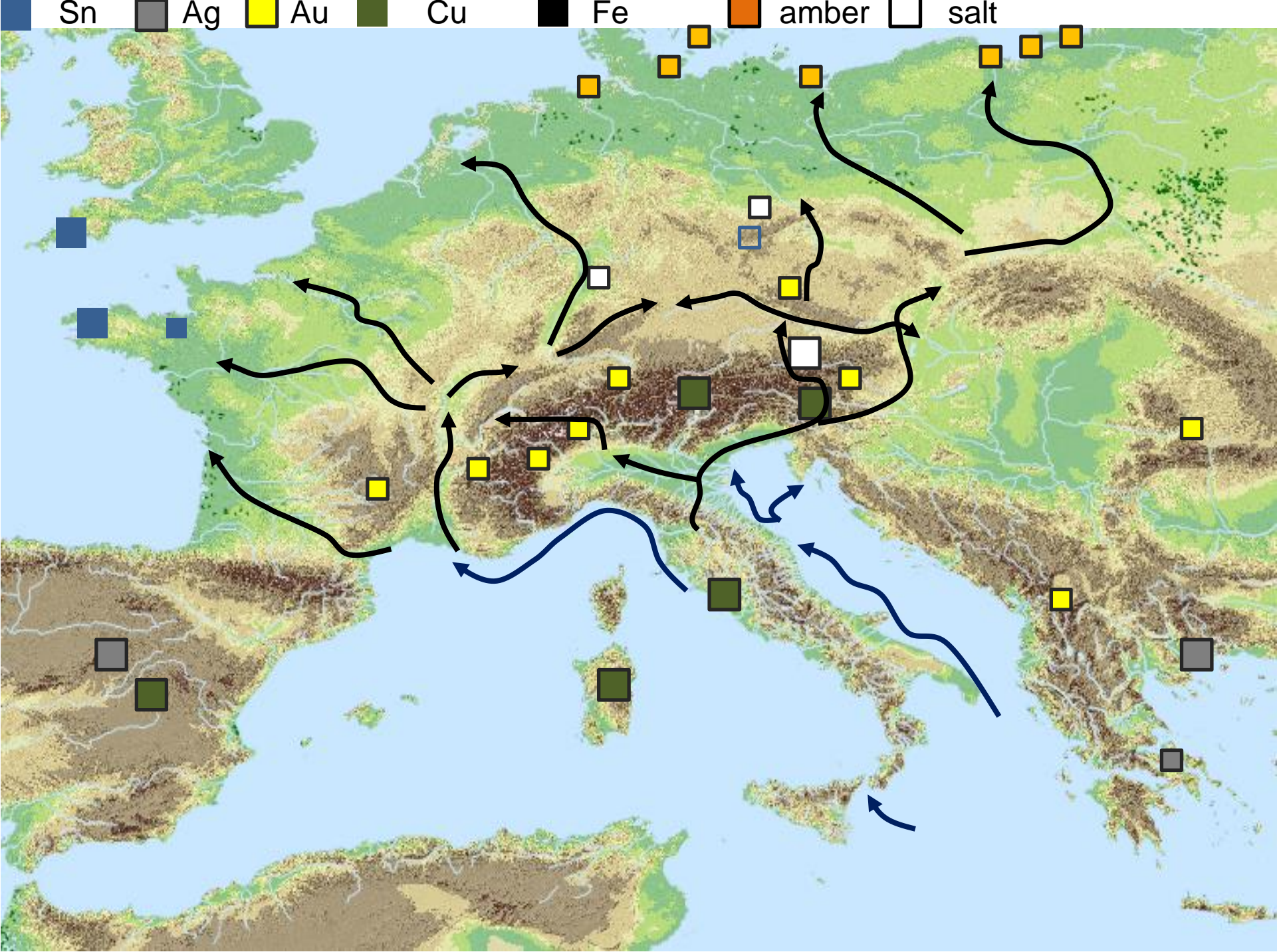


Jan Kysela











S. Bernard

S. Gotthard

Brenner

Tarvisio

