

The background of the image is a promotional photograph of the main cast of the movie 'Knives Out'. The characters are dressed in formal, colorful attire and are posed in a grand, dimly lit room. The text is overlaid on this image.

**THE STRANGE
VARIETY OF
ACCENTS IN
*KNIVES OUT***



THE BEST WHODUNNIT EVER MADE!

2019

Director: Rian Johnson

Academy Award nominated for Best
Original Screenplay

52 awards



THE PLOT

When renowned crime novelist Harlan Thrombey is found dead at his estate after his 85th birthday, Detective Benoit Blanc is mysteriously enlisted to investigate.

From Harlan's dysfunctional family to his devoted staff, Blanc sifts through a web of red herrings and self-serving lies to uncover the truth behind Harlan's untimely death.
(Boston)



**VARIOUS
ACCENTS IN
*KNIVES OUT***



THE BACKGROUND

01 BENOIT BLANC

the detective
deep southern accent

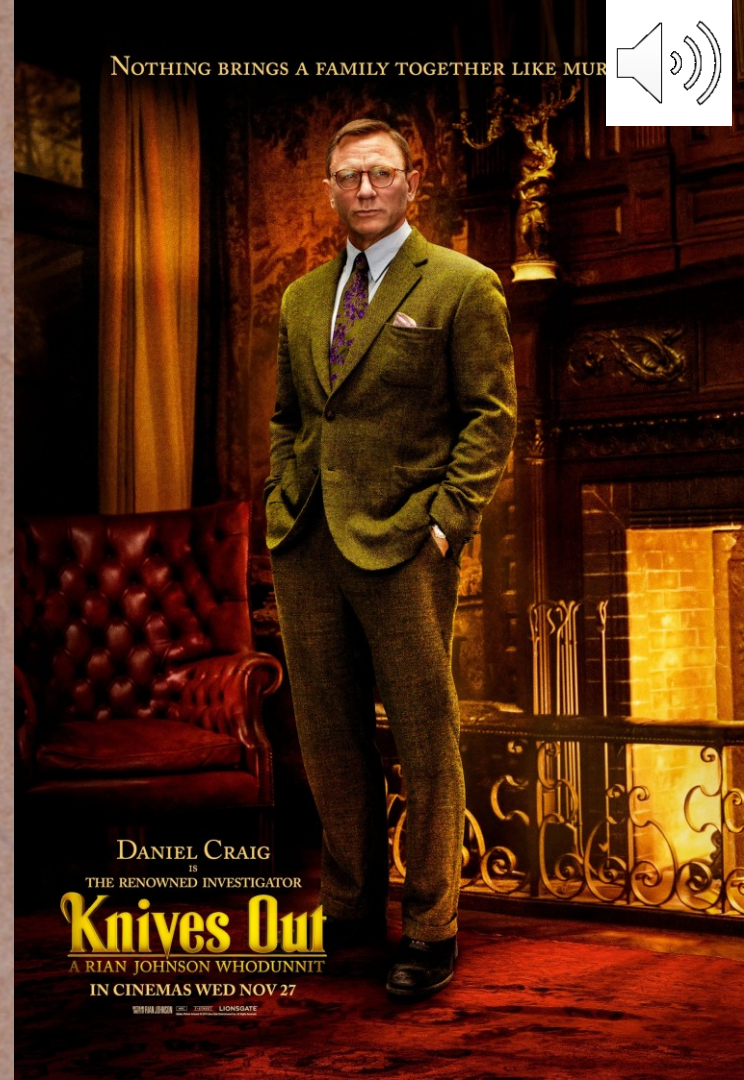
02 MARTA

personal caretaker
background: latin america

03 THE FAMILY

grew up together, but have
different accents

NOTHING BRINGS A FAMILY TOGETHER LIKE MURDER



DANIEL CRAIG

IS
THE RENOWNED INVESTIGATOR

Knives Out

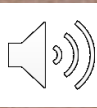
A RIAN JOHNSON WHODUNNIT

IN CINEMAS WED NOV 27

SONY PICTURES CLASSICS PRESENTS A LIONSGATE FILM



**BENOIT BLANC
(DANIEL CRAIG)**



BLANC'S ACCENT



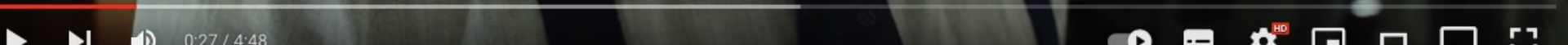
- Blanc talks like a member of the Southern aristocracy with an accent that has been described by Ransom as a "Kentucky Fried Foghorn Leghorn Drawl".
- Many people online stated the accent to be distracting, difficult and even just terrible.
- Designed to be over the top.
- Trying to capture that slow-spoken drawn out deep south accent
- "a very subtle southern accent"



A VIDEO

https://youtu.be/_03eKij7jkA

Knives Out





THE ACCENT:

01 **STRONG & OVERDONE**

Falling back onto RP

03 **PEOPLE WITH STRONG ACCENTS ARE GENERALLY DUMBER.**

05 **OLD MONEY LOUISIANA**

02 **[ɛ] MERGING [i]**

04 **FIRST SYLLABLE STRESS**

06 **DROPPING G's**

Goin'



THE CAST **TALKING ABOUT** **THE ACCENT**

<https://www.youtube.com/watch?v=5-jA-vXNX-M>

THE FAMILY





JONI THROMBEY

- (TONI COLLETTE)
- VALLEY GIRL
- Open mouth
- Uptalking
- End-emphasis
- *“Who is that guy?” “You’re famous.”*



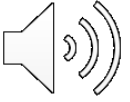


LINDA DRYSDALE

- (JAMIE LEE CURTIS)
- GIRL BOSS
- Rhotic (father, here)
- T-flapping
- Intrusion

<https://www.youtube.com/watch?v=JZWtuAIM1Ak>

(Listen to the difference of *here* with Linda and Mr. Blanc)



<https://www.youtube.com/watch?v=sL-9Khv7wa4>

WATCH THE TRAILER HERE