

Partita II

BWV 1004

Allemanda

Violino

3

6

9

12

14

17

20

22

24

27



Corrente



Sarabanda

Musical score for Sarabanda, page 32. The score is in 3/4 time, key of B-flat major, and consists of nine staves of music. It features various musical notations including eighth and sixteenth notes, rests, and trills (tr). Measure numbers 5, 9, 12, 16, 19, 22, 25, and 27 are indicated at the start of their respective staves. The piece concludes with a double bar line and repeat dots.

Giga

The musical score for 'Giga' is written in 12/8 time and consists of ten staves of music. The key signature has one flat (B-flat). The piece begins with a treble clef and a 12/8 time signature. The first staff contains the initial melody. The second staff starts with a measure rest and a triplet of eighth notes. The third staff begins with a measure rest and a quintuplet of eighth notes. The fourth staff starts with a measure rest and a triplet of eighth notes. The fifth staff begins with a measure rest and a triplet of eighth notes. The sixth staff starts with a measure rest and a triplet of eighth notes, with dynamics 'p' and 'f' indicated. The seventh staff begins with a measure rest and a triplet of eighth notes. The eighth staff starts with a measure rest and a triplet of eighth notes. The ninth staff begins with a measure rest and a triplet of eighth notes. The tenth staff starts with a measure rest and a triplet of eighth notes, ending with a double bar line.



Ciaccona

7

12

17

22

27

31

35

39

42

Musical score for a single melodic line, measures 45-74. The score is written in treble clef with a key signature of one flat (B-flat). The music features a variety of rhythmic patterns, including eighth and sixteenth notes, and rests. Phrasing is indicated by slurs and ties. Measure 72 includes a trill (tr) on the final note. The score is organized into ten systems, each containing two staves.

45

48

51

54

58

62

65

68

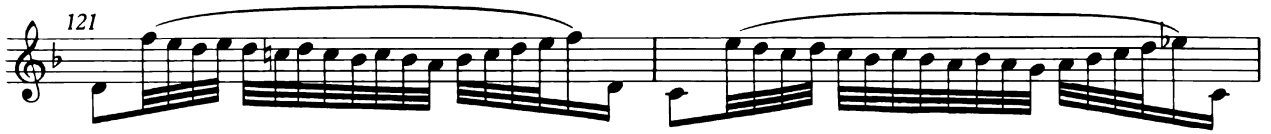
70

72

74

tr







198 *arpeggio*

204

210

214

217

220

223

226

228

