

Mein junges Leben hat ein End'

1e VARIATIE

The first system of the first variation consists of two staves. The right staff begins with a treble clef, a common time signature, and a key signature of one sharp (F#). The left staff begins with a bass clef and the same time and key signature. The music is written in a style typical of 19th-century piano accompaniment, with a focus on harmonic support and melodic development. The first system ends with a measure containing a fermata.

The second system of the first variation continues the musical piece. It features a treble and bass staff with a common time signature and a key signature of one sharp. The music is characterized by a steady rhythm and a focus on harmonic support. The system ends with a measure containing a fermata.

2e VARIATIE

The first system of the second variation consists of two staves. The right staff begins with a treble clef, a common time signature, and a key signature of one sharp (F#). The left staff begins with a bass clef and the same time and key signature. The music is written in a style typical of 19th-century piano accompaniment, with a focus on harmonic support and melodic development. The first system ends with a measure containing a fermata.

The second system of the second variation continues the musical piece. It features a treble and bass staff with a common time signature and a key signature of one sharp. The music is characterized by a steady rhythm and a focus on harmonic support. The system ends with a measure containing a fermata.

The third system of the second variation continues the musical piece. It features a treble and bass staff with a common time signature and a key signature of one sharp. The music is characterized by a steady rhythm and a focus on harmonic support. The system ends with a measure containing a fermata.

The fourth system of the second variation continues the musical piece. It features a treble and bass staff with a common time signature and a key signature of one sharp. The music is characterized by a steady rhythm and a focus on harmonic support. The system ends with a measure containing a fermata.

3e VARIATIE

3e VARIATION



3e VARIATION

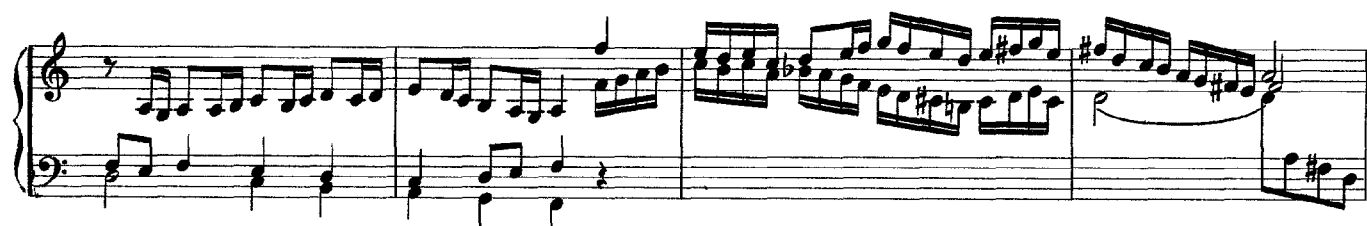
A musical score for the song 'The Rose Tree'. It features a treble and bass staff. The melody is written in the treble staff, and the bass line is in the bass staff. The key signature has one flat (B-flat), and the time signature is 4/4. The melody consists of eighth and sixteenth notes, with a final measure marked with a '6' indicating a sixteenth note. The bass line provides a simple harmonic accompaniment with quarter and eighth notes.

The musical score for 'The Rose Tree' is presented in two systems. The first system contains measures 1 through 48, and the second system contains measures 49 through 52. The music is written for a single melodic line and a basso continuo line. The key signature is one sharp (F#), and the time signature is 2/4. The melody is characterized by a series of eighth-note runs, particularly in the first system. The basso continuo line provides harmonic support with chords and single notes. The score is marked with a '6' above the first measure of the first system and a '50' above the first measure of the second system.

A musical score for the song 'The Rose Tree'. It features a treble and bass staff. The treble staff contains the melody, which includes a key signature change from one flat to two flats. The bass staff provides a harmonic accompaniment with chords and moving lines. The score is written in a standard musical notation style with a common time signature.

A musical score for the song 'The Rose Tree'. The score is written for a piano, with a treble and bass staff. The key signature is one sharp (F#), and the time signature is 2/4. The melody is in the treble staff, and the accompaniment is in the bass staff. The melody consists of a series of eighth and sixteenth notes, with a final sharp sign indicating the end of the piece. The accompaniment consists of a steady eighth-note pattern in the left hand, with some chords and accidentals in the right hand.

A musical score for the song 'The Rose Tree'. It features a treble and bass staff. The treble staff contains a melody with eighth and sixteenth notes, including a key signature change to one sharp (F#) in the third measure. The bass staff provides a harmonic accompaniment with chords and single notes. The score is written in a common time signature (C) and includes a repeat sign at the end.



5e VARIATIE



