

9.

à 5.

J. H. S. C.

Alto.

Padouana.

DDD

à 5.

J. H. S. C.

Alto

Gagliarda.

Musical score for Gagliarda, Alto clef, 3/4 time signature. The score consists of four staves of music with various notes, rests, and ornaments.

6. 7. 4. à 5.

Courante.

Musical score for Courante, Alto clef, 6/4 time signature. The score consists of four staves of music with various notes, rests, and ornaments.

à 4.

J. H. S. C.

Alto.

Allemande.

Tripla.

This section contains four staves of music. The first staff is labeled 'Allemande.' and features a common time signature (C) and a treble clef. The second and fourth staves are unlabeled but follow the same notation style. The third staff is labeled 'Tripla.' and includes a '3' time signature, indicating a triplet. The music consists of rhythmic patterns with various note values and rests, typical of a lute tablature transcription.

10.

à 5.

Padouana.

Padouana.

This section contains four staves of music for a piece titled 'Padouana'. It begins with a common time signature (C) and a treble clef. The notation is dense, featuring many sixteenth and thirty-second notes, characteristic of a lively dance piece. The piece concludes with a double bar line and repeat signs.

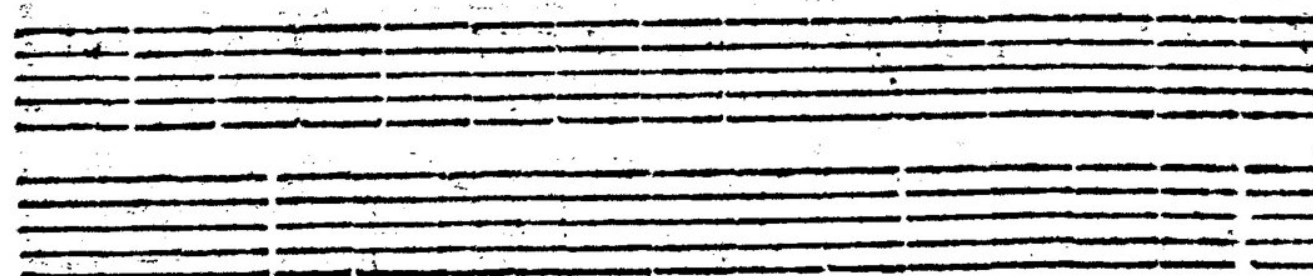
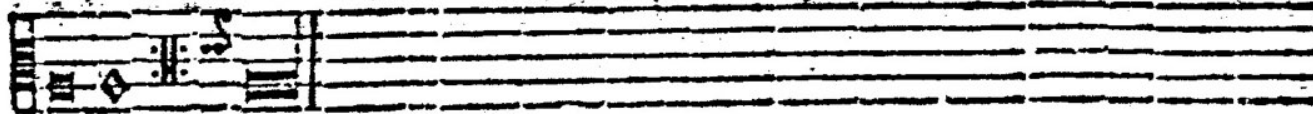
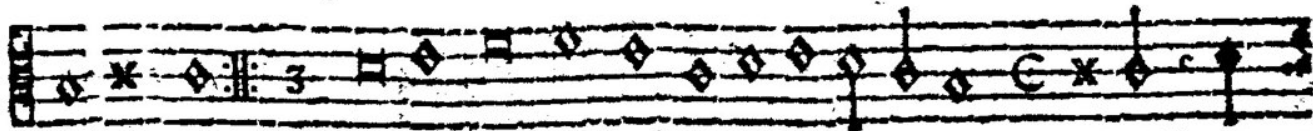
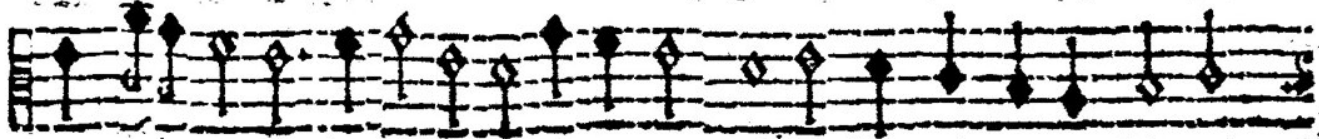
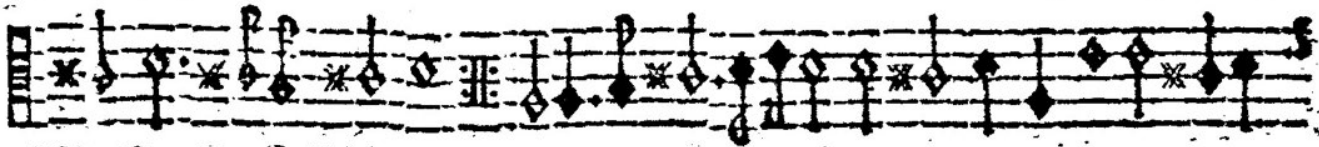
DDD 2

90

à 5.

J. H. S. C.

Alto.



DDD