

I. "Prehistoric" Art

Art: the first mode of expression?

Prehistory

3 millions years to
c. 3'300 BCE

Paleolithic

Neolithic

3 millions to
10'000 BCE

10'000 to
3'300 BCE

History

c. 3'300 BCE to nowadays

Antiquity

Middle Ages

Modern Age

Contemporary?

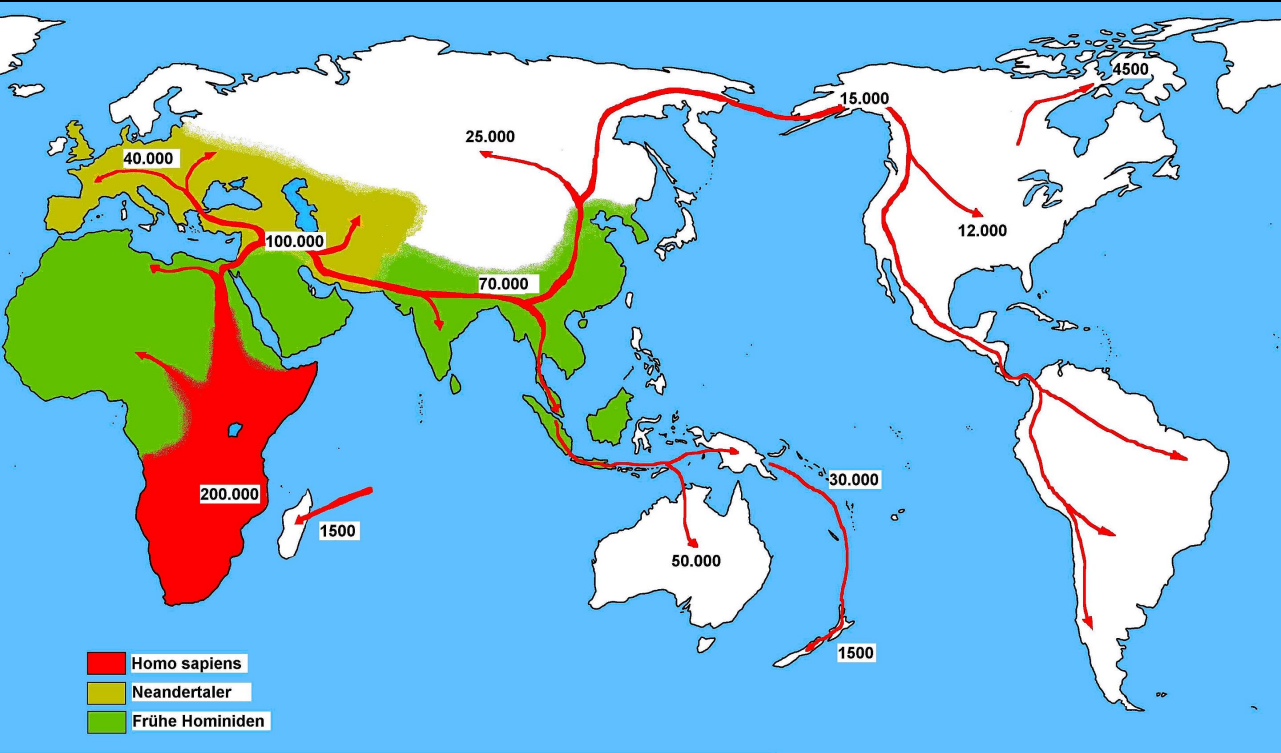
3'300 BCE to
476 CE

476 to
1453 or
1492

1453–1789

1789–2023 etc....





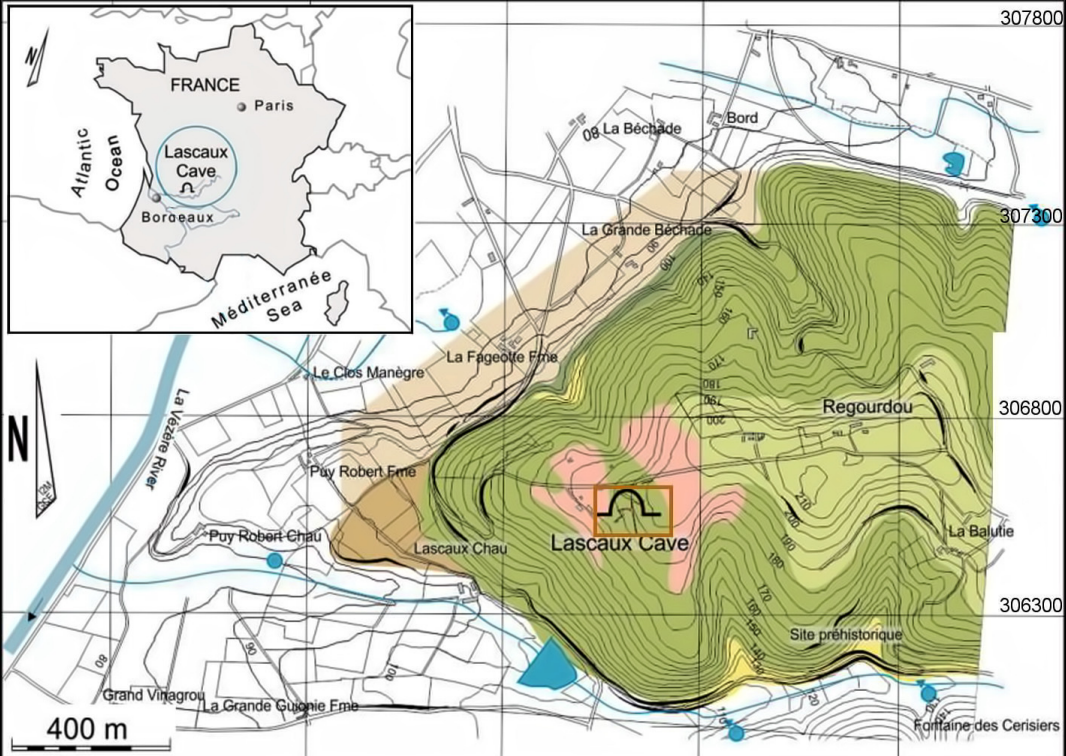












QUATERNARY

- a² Recent alluvium
- a¹ Ancient alluvium
- SP Slope deposits

TERTIARY

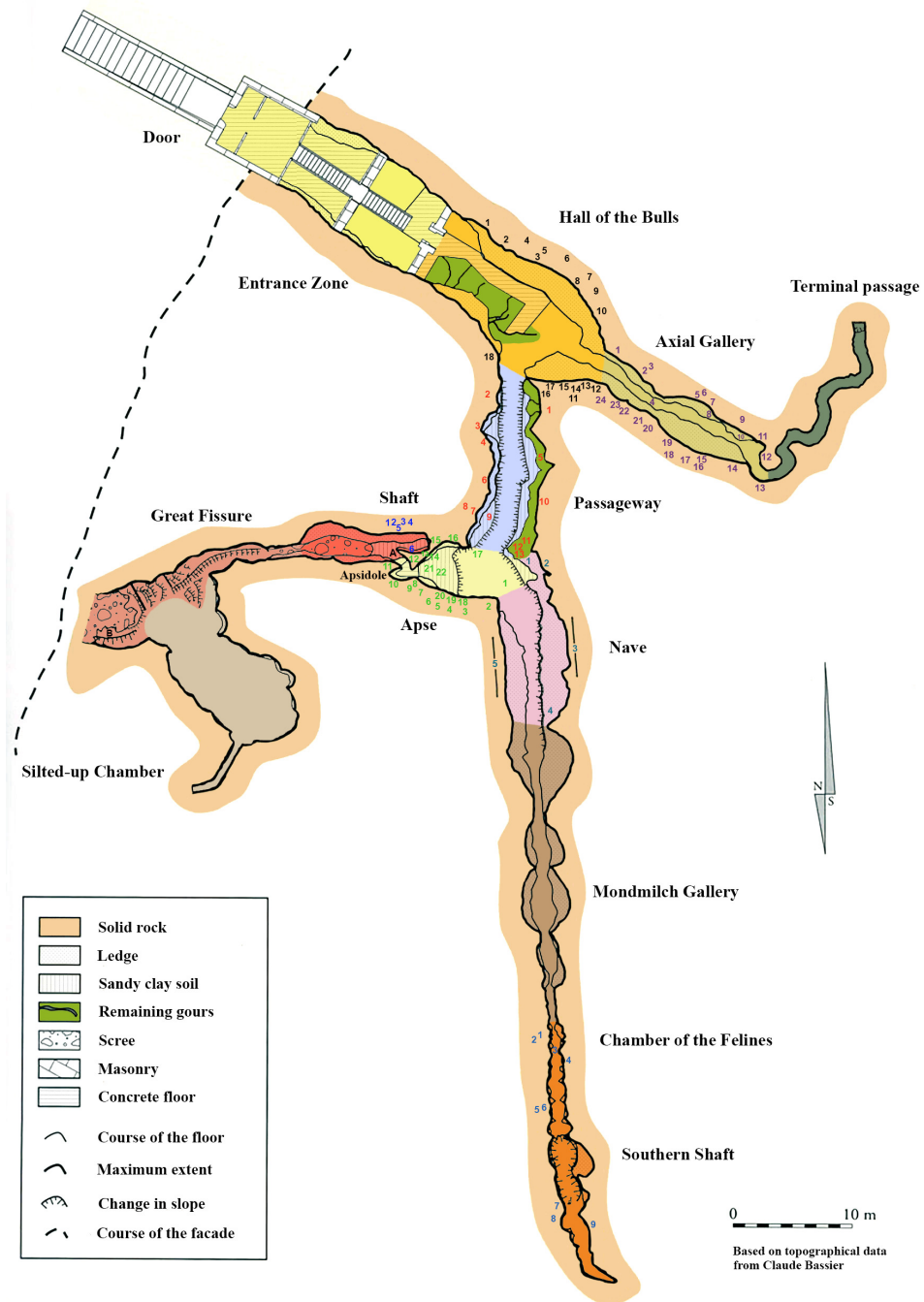
- Clayey sand of Perigord

CRETACEOUS

- C5a Sandy Santonian limestone
- C4b Coniacian limestone
- C4a Coniacian marl

- ERT survey areas





The Hall of the Bulls

1. Black horse's head
2. Unicorn
3. Frieze of the black horses
4. Head of the first bull
5. Great red and black horse
6. Second bull
7. Brown horse
8. Frieze of the Small Stags
9. Third bull
10. Red cow
11. Fourth bull
12. Black horse in the forequarters of the fourth bull
13. Small black stag
14. Polychrome headless horse
15. Bear
16. Fifth bull
17. Red cow followed by her calf
18. Head of a bull

The Axial Gallery

1. The Red Cow with the Black Collar
2. Frieze of the yellow small horses
3. The Cow with the Drooping Horn
4. Red cow painted on the ceiling
5. Great Black Bull
6. Frieze of the heads of yellow cattle
7. Red cows covered by the Great Black Bull
8. Panel of the Hemione
9. Galloping Horse
10. Feline
11. Yellow horse and polychrome horse
12. Upside-down Horse
13. Red Panel
14. Confronted Ibexes
15. Superposed horses
16. Large red quadrangular symbol
17. Falling Cow
18. Solitary head of a bull
19. Frieze of the Small Horses

The Passageway

1. Traces of a painted equid
2. Hindquarters and beginning of the belly line of a painted equid
3. Head of a bison
4. Procession of engraved horses
5. Horse rolling on the ground
6. Engraved ibex and painted hooves of an equid
7. Engraved and black painted horse
8. Horse with the turned-back foot
9. Heads and horns of cows
10. Red drawing of a headless equid
11. Engraved ibexes and horses
12. Two horses engraved one above the other
13. Bearded Horse

The Apse

1. Stag with Thirteen Arrows
2. Fallen Stag
3. Third great stag
4. Horse and aurochs
5. Confronted stags
6. Confronted ibexes
7. Upward-turned Horse
8. Panel of the Musk Ox
9. Horse with Claviforms
10. Frieze of the painted and engraved stags
11. 'Chimney' sign
12. Small Sorcerer
13. Great Reindeer
14. The two bison
15. 'fend-la-bise' Stag
16. Major Stag
17. Great stag and horse with merged outlines
18. The Hut
19. Engraved stag on black background
20. Great Sorcerer
21. Red horse
22. Yellow horse

The Nave

1. Panel of the Ibexes
2. Panel of the Imprint
3. Panel of the Great Black Cow
4. Crossed Bison
5. Frieze of the Swimming Stags

The Shaft

1. Rhinoceros
2. Six black dots
3. Man
4. Bison
5. Bird
6. Black horse

The Chamber of the Felines

1. Niche of the felines
2. Horse in frontal view
3. Quadrangular signs
4. Crossed bison
5. Panel of the horse
6. Tree house
7. Sign XIII
8. Head and horns of a bison
9. Six red dots

	Solid rock
	Ledge
	Sandy clay soil
	Remaining gours
	Scree
	Masonry
	Concrete floor
	Course of the floor
	Maximum extent
	Change in slope
	Course of the facade

0 10 m

Based on topographical data from Claude Bassier







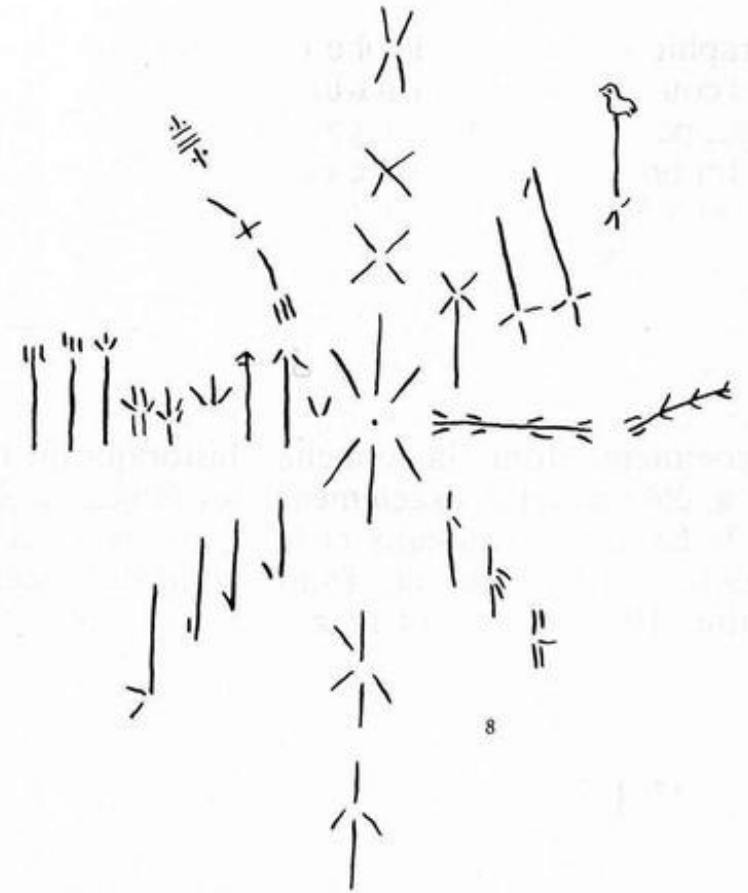
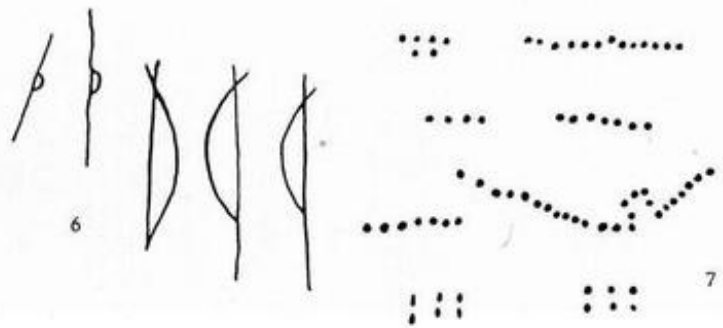
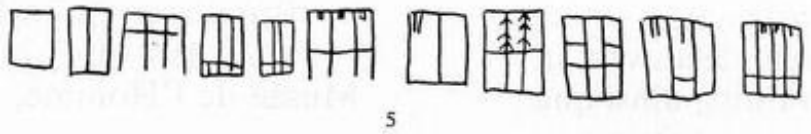


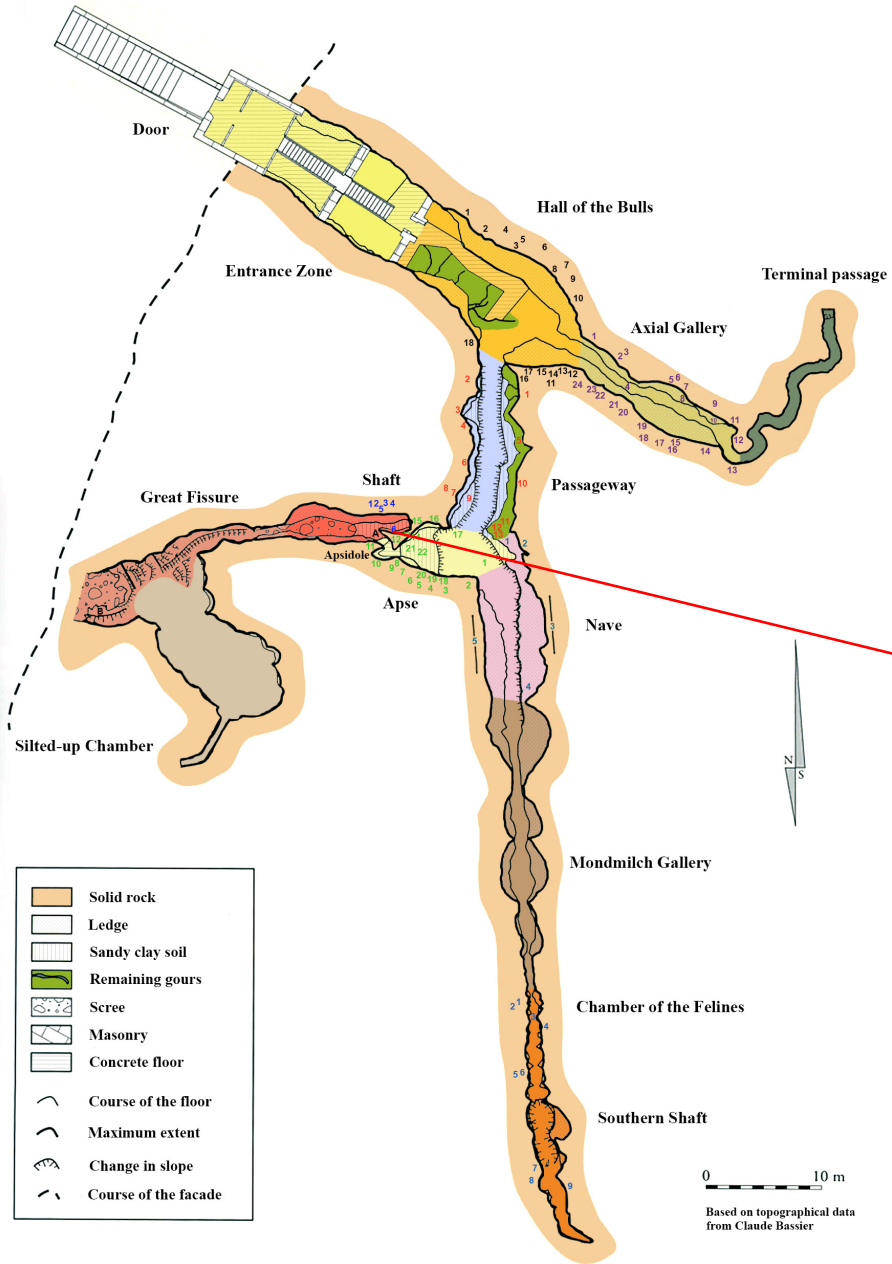




1948

83461





The Hall of the Bulls

1. Black horse's head
2. Unicorn
3. Frieze of the black horses
4. Head of the first bull
5. Great red and black horse
6. Second bull
7. Brown horse
8. Frieze of the Small Stags
9. Third bull
10. Red cow
11. Fourth bull
12. Black horse in the forequarters of the fourth bull
13. Small black stag
14. Polychrome headless horse
15. Bear
16. Fifth bull
17. Red cow followed by her calf
18. Head of a bull

The Axial Gallery

1. The Red Cow with the Black Collar
2. Frieze of the yellow small horses
3. The Cow with the Drooping Horn
4. Red cow painted on the ceiling
5. Great Black Bull
6. Frieze of the heads of yellow cattle
7. Red cows covered by the Great Black Bull
8. Panel of the Hemione
9. Galloping Horse
10. Feline
11. Yellow horse and polychrome horse
12. Upside-down Horse
13. Red Panel
14. Confronted Ibexes
15. Superposed horses
16. Large red quadrangular symbol
17. Falling Cow
18. Solitary head of a bull
19. Frieze of the Small Horses

The Passageway

1. Traces of a painted equid
2. Hindquarters and beginning of the belly line of a painted equid
3. Head of a bison
4. Procession of engraved horses
5. Horse rolling on the ground
6. Engraved ibex and painted hooves of an equid
7. Engraved and black painted horse
8. Horse with the turned-back foot
9. Heads and horns of cows
10. Red drawing of a headless equid
11. Engraved ibexes and horses
12. Two horses engraved one above the other
13. Bearded Horse

The Apse

1. Stag with Thirteen Arrows
2. Fallen Stag
3. Third great stag
4. Horse and aurochs
5. Confronted stags
6. Confronted ibexes
7. Upward-turned Horse
8. Panel of the Musk Ox
9. Horse with Claviforms
10. Frieze of the painted and engraved stags
11. 'Chimney' sign
12. Small Sorcerer
13. Great Reindeer
14. The two bison
15. 'fend-la-bise' Stag
16. Major Stag
17. Great stag and horse with merged outlines
18. The Hut
19. Engraved stag on black background
20. Great Sorcerer
21. Red horse
22. Yellow horse

The Nave

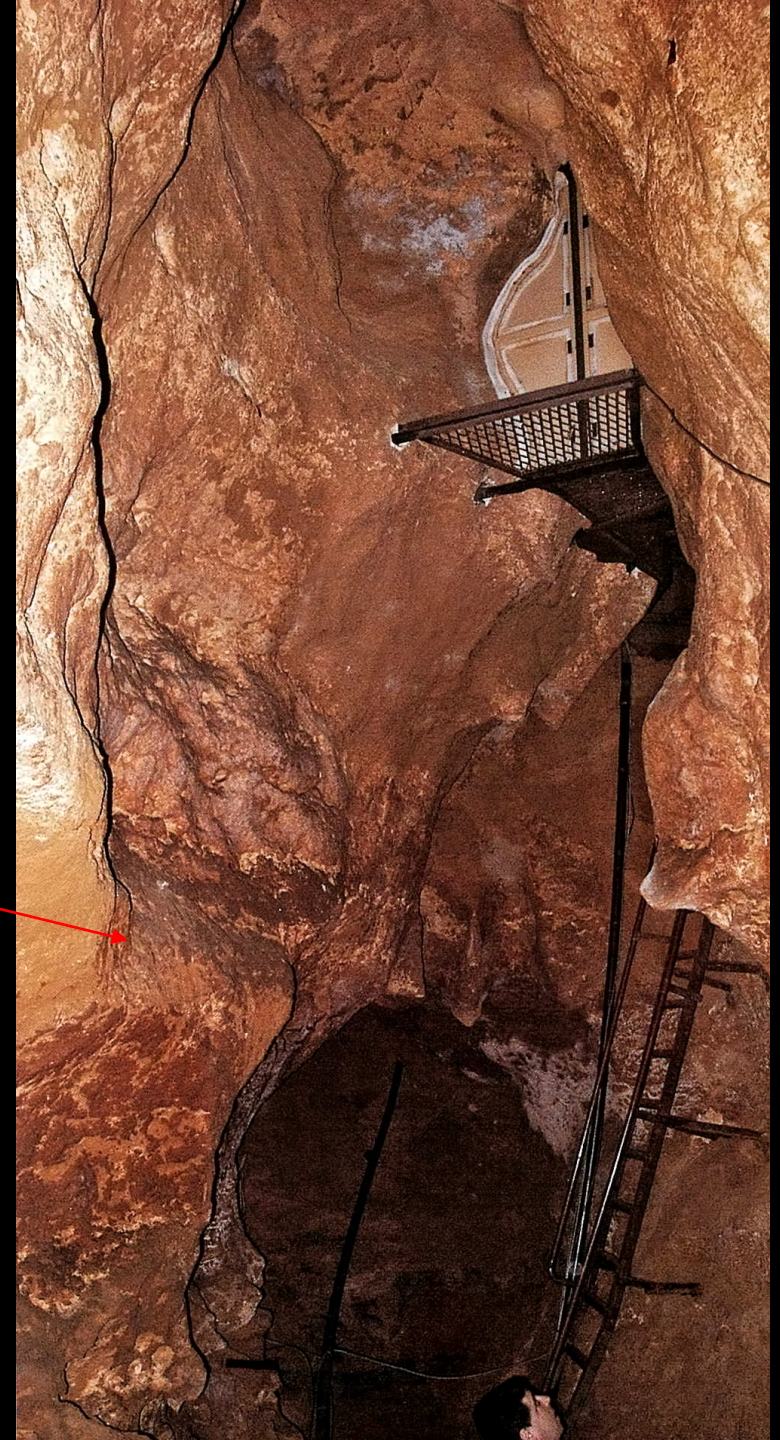
1. Panel of the Ibexes
2. Panel of the Imprint
3. Panel of the Great Black Cow
4. Crossed Bison
5. Frieze of the Swimming Stags

The Shaft

1. Rhinoceros
2. Six black dots
3. Man
4. Bison
5. Bird
6. Black horse

The Chamber of the Felines

1. Niche of the felines
2. Horse in frontal view
3. Quadrangular signs
4. Crossed bison
5. Panel of the horse
6. Tree house
7. Sign XIII
8. Head and horns of a bison
9. Six red dots







Function(s) of images?





“I am struck by the fact that new light is shed on our birth
at the very moment when the perspective of death is
appearing”

Georges Bataille, *Lascaux ou la naissance de l'art*, 1955



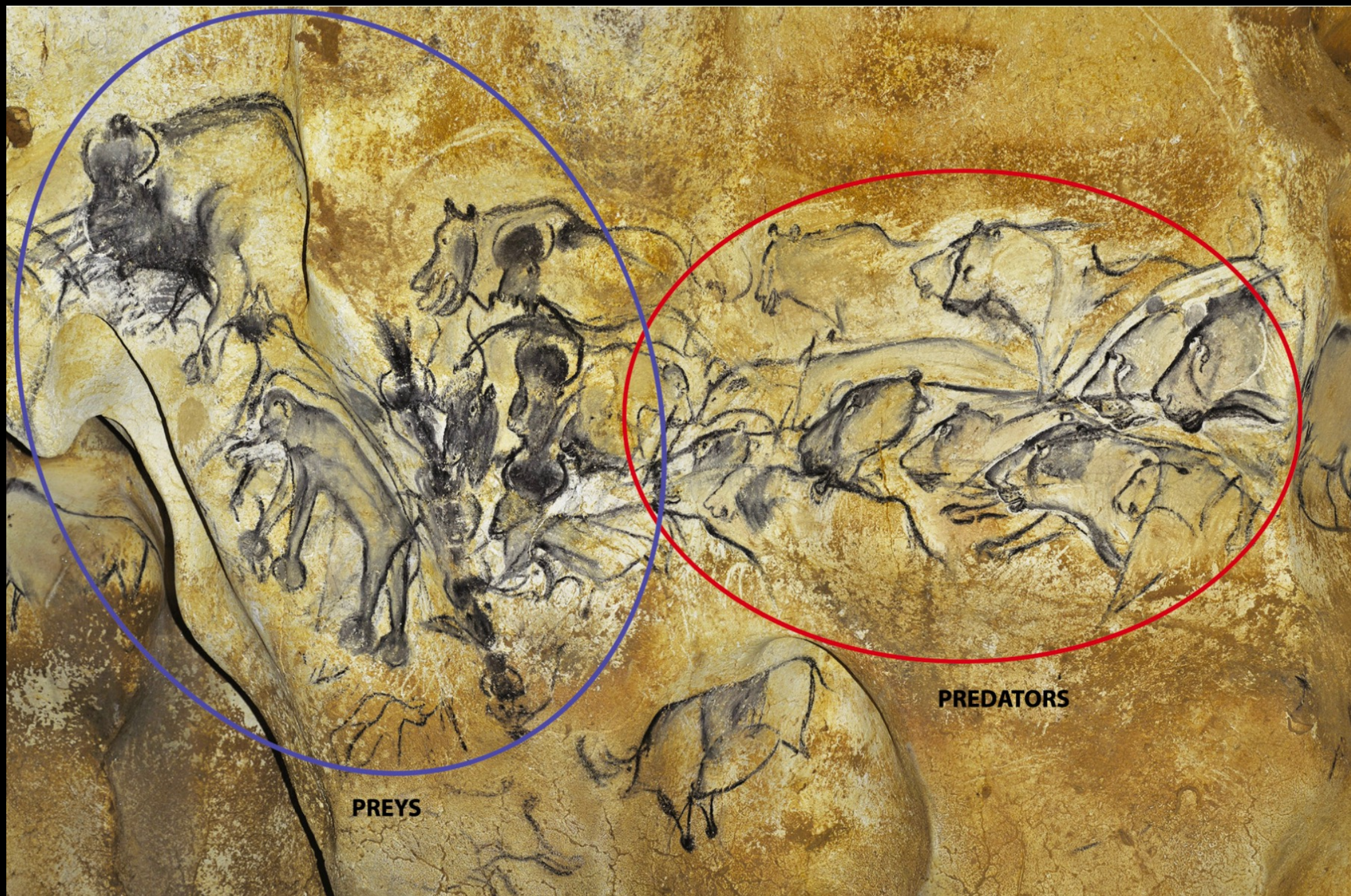




5 cm



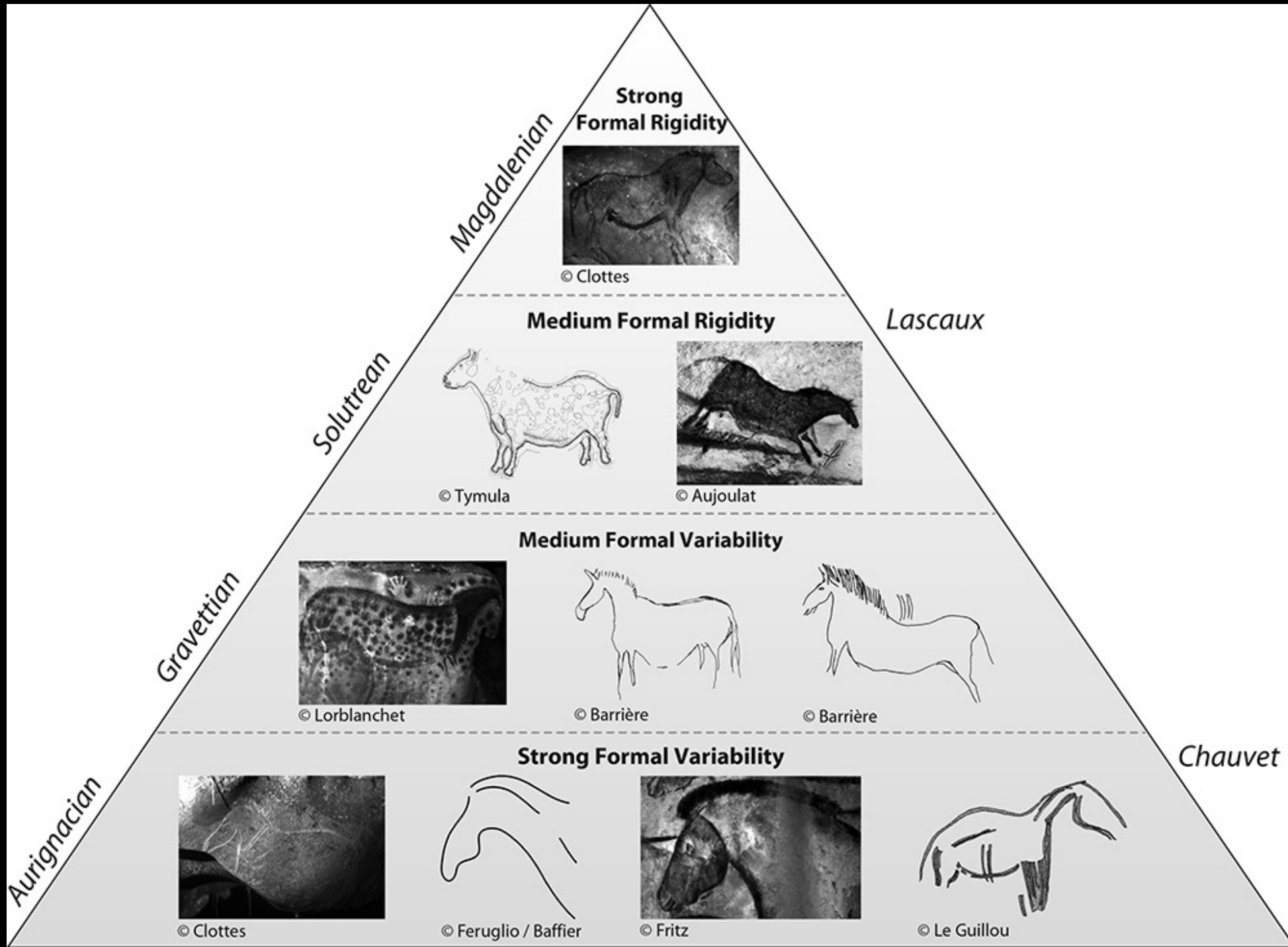




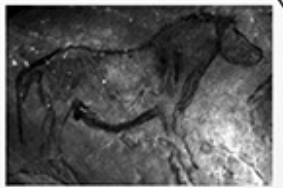
PREYS

PREDATORS





Strong Formal Rigidity



© Clottes

Medium Formal Rigidity

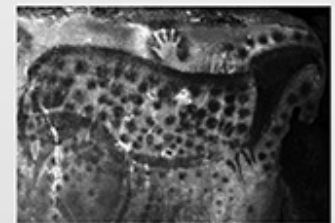


© Tymula



© Aujoulat

Medium Formal Variability



© Lorblanchet



© Barrière



© Barrière

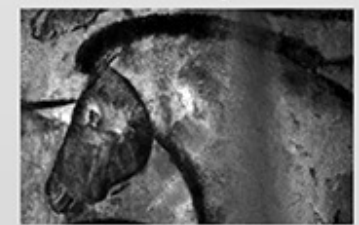
Strong Formal Variability



© Clottes



© Feruglio / Baffier



© Fritz



© Le Guillou



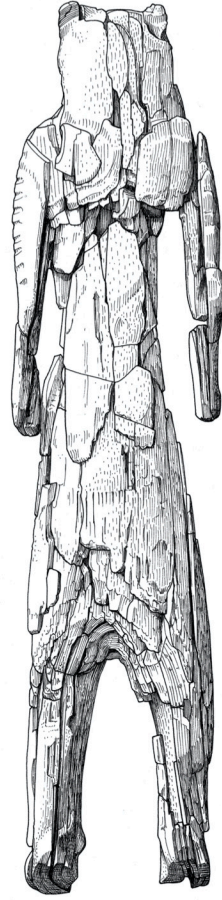
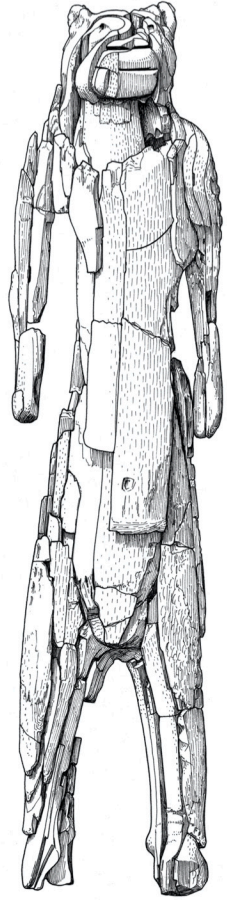
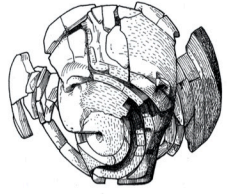
-30 000 **-22 000** **-18 000** **-12 000**

Gravettian

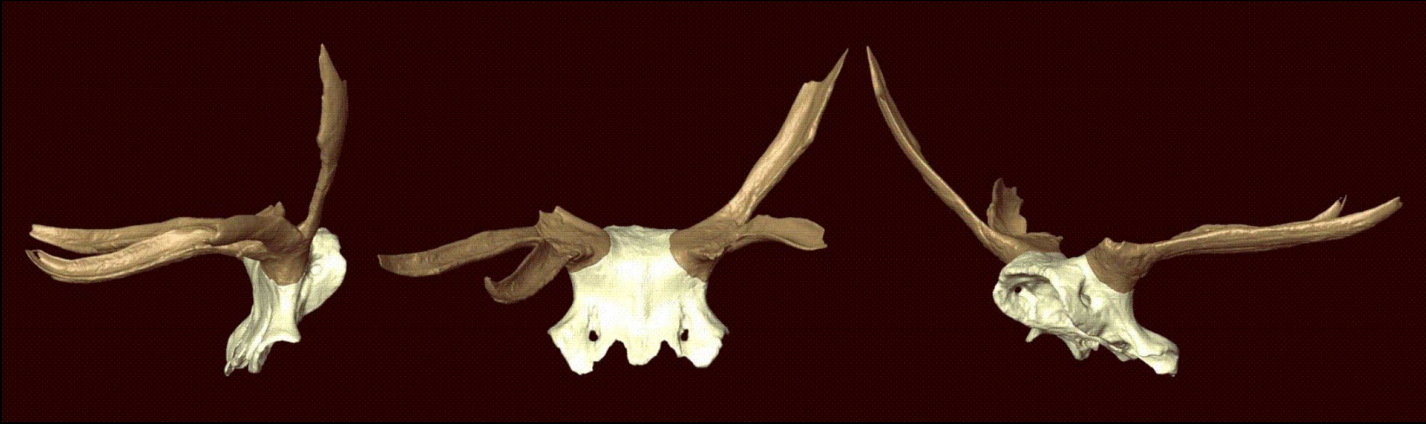
Solutrean

Magdalenian

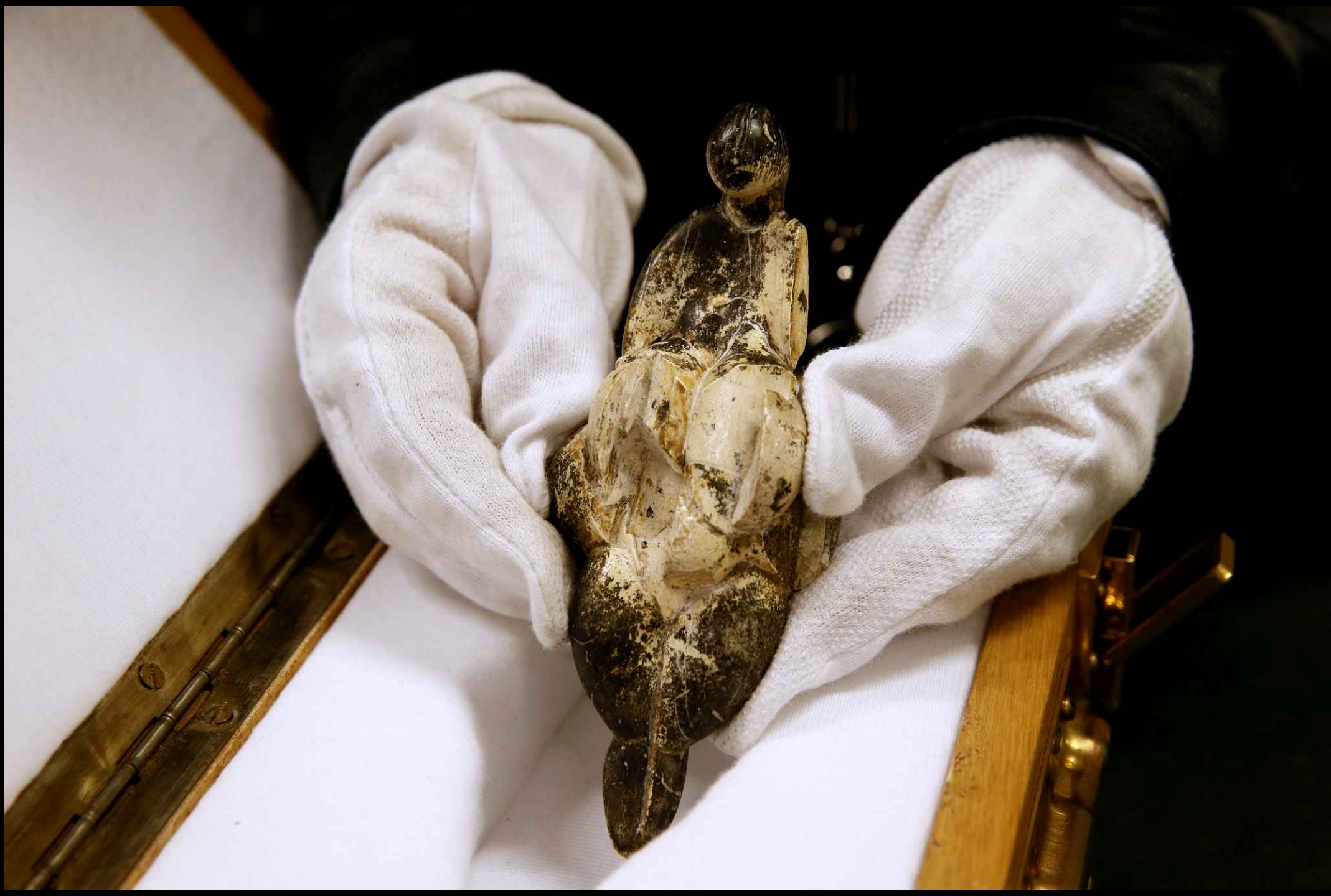












11,1 cm















Louise Bourgeois, *Harmless Woman*, 1969
(private collection)



Préhistoire

— Une énigme moderne

Prehistory

— A Modern Enigma

L'exposition
The Exhibition



Centre
Pompidou



