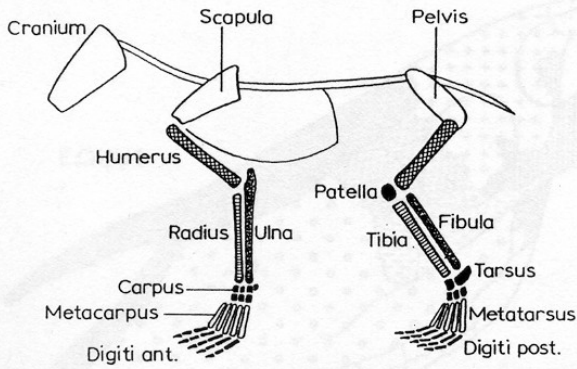


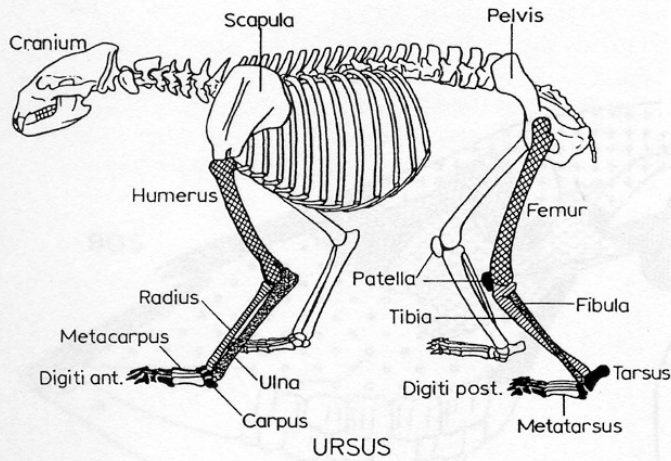
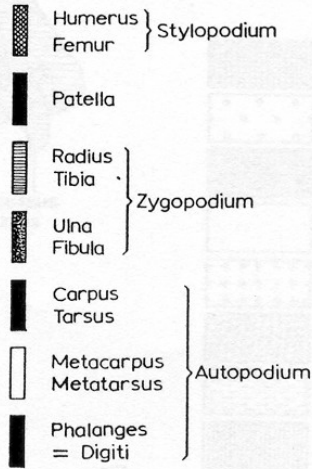
# Základy osteologie

Lebky, parohy, rohy a zuby

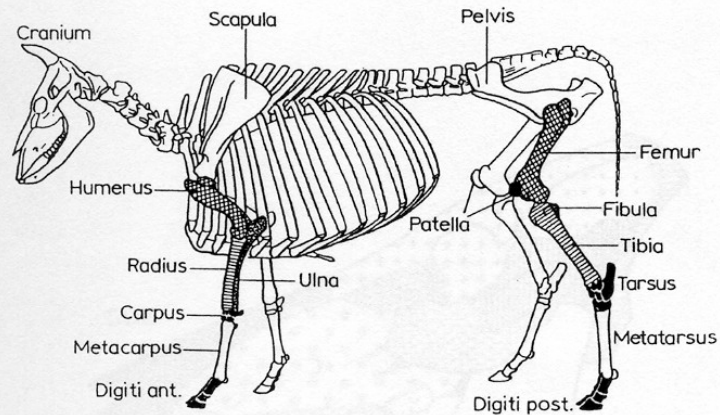




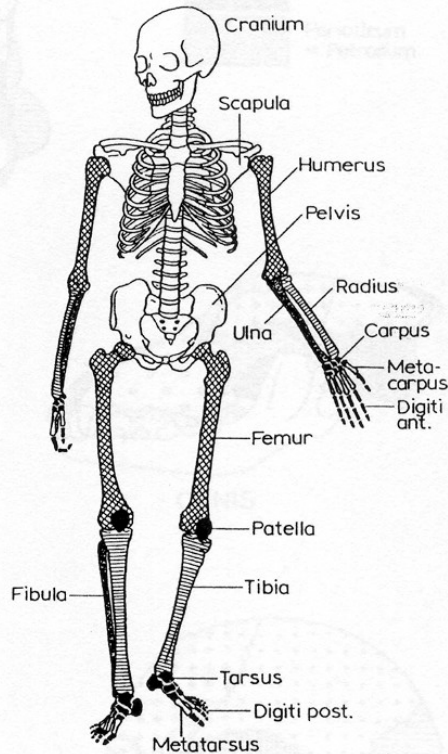
BASIC PATTERN  
GRUNDBAU



URSUS

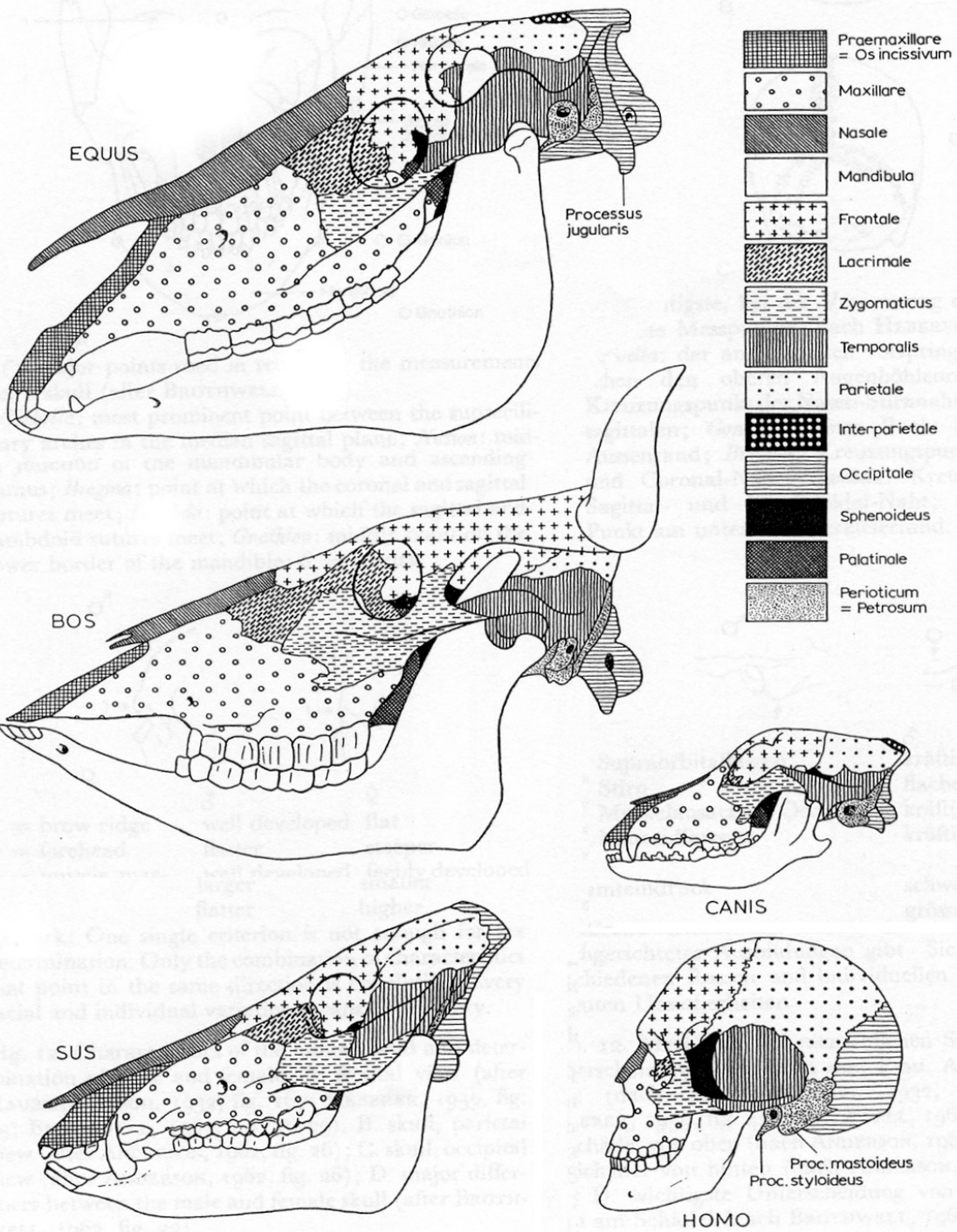


BOS



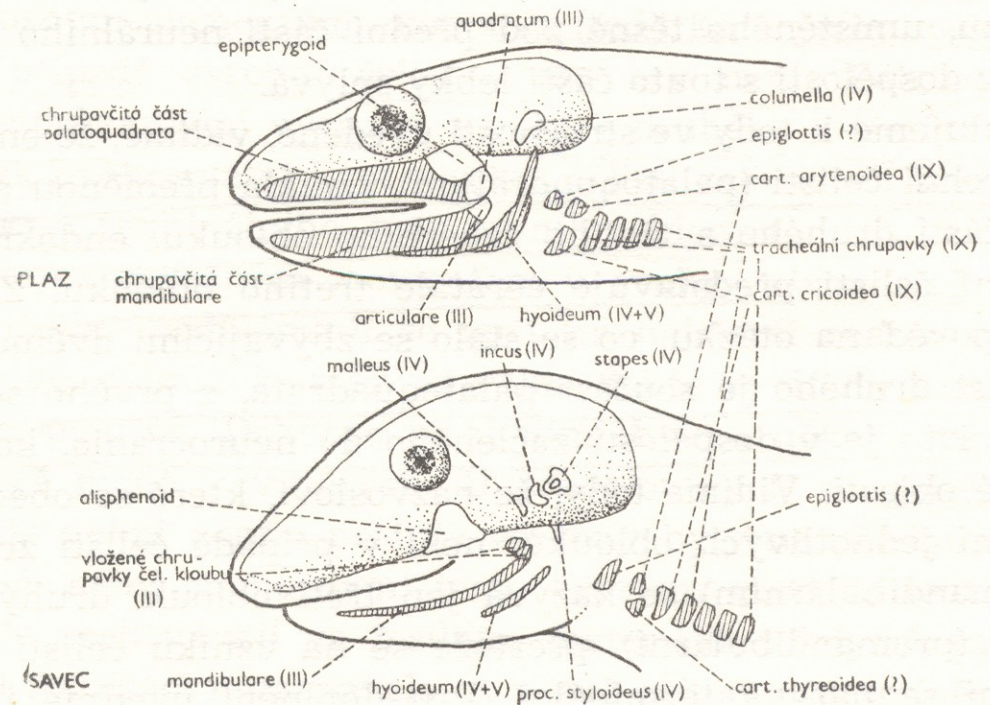
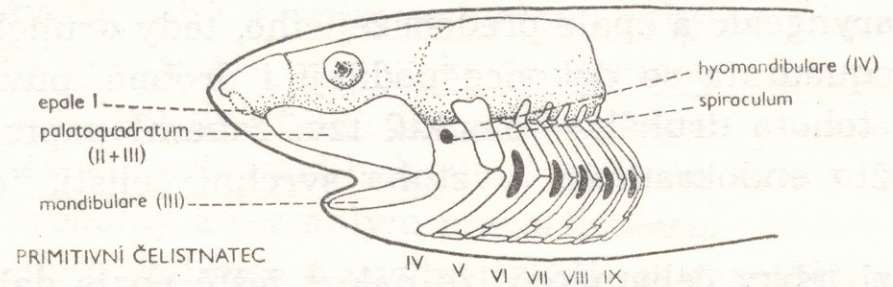
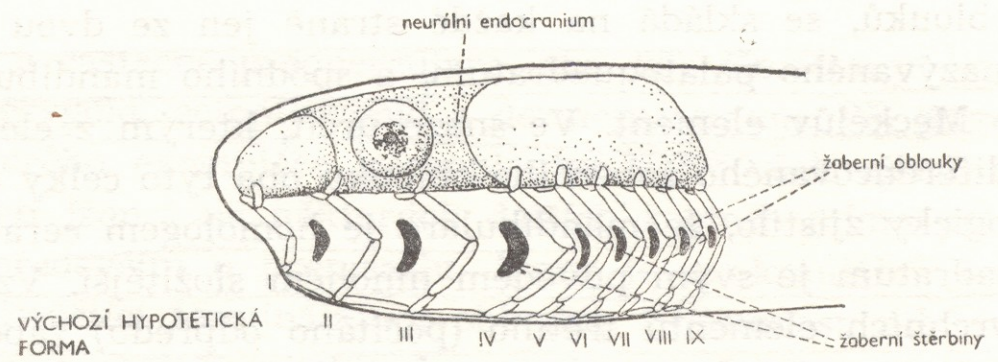
HOMO

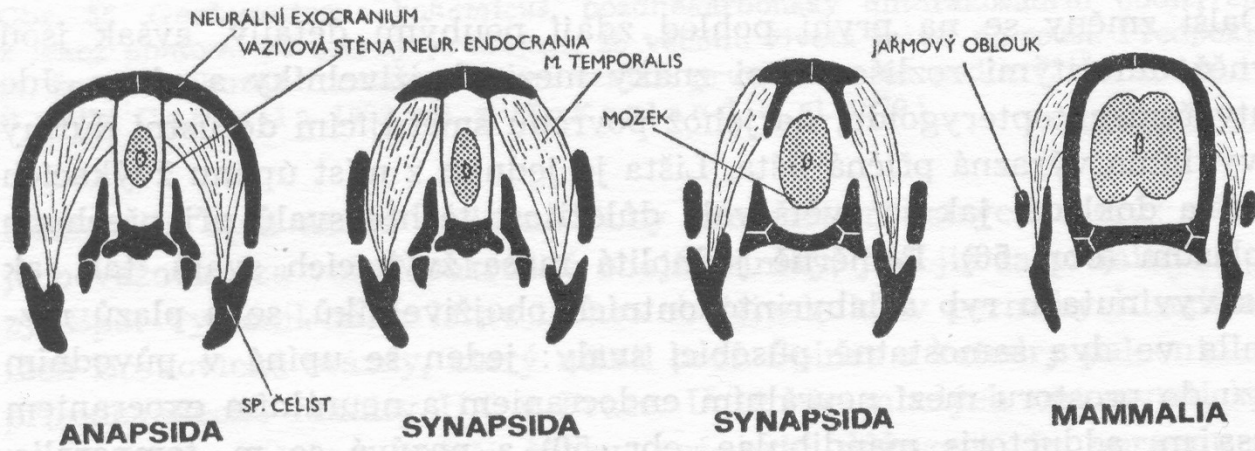
# Základní anatomická stavba zvířat a člověka



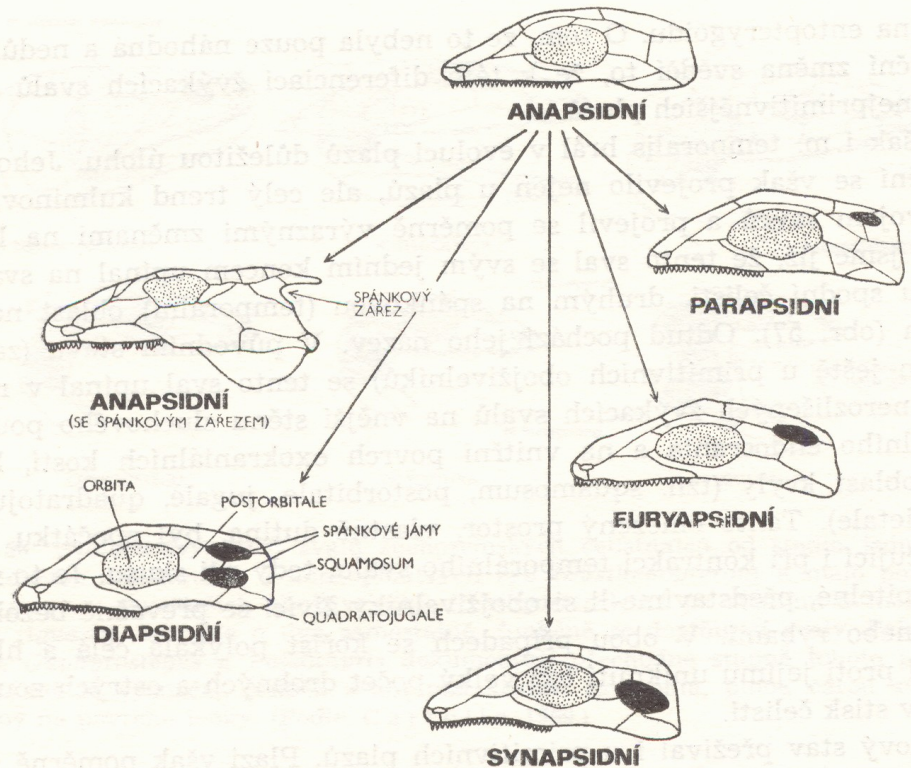
**Porovnání stavby  
lebky různých  
druhů zvířat a člověka**

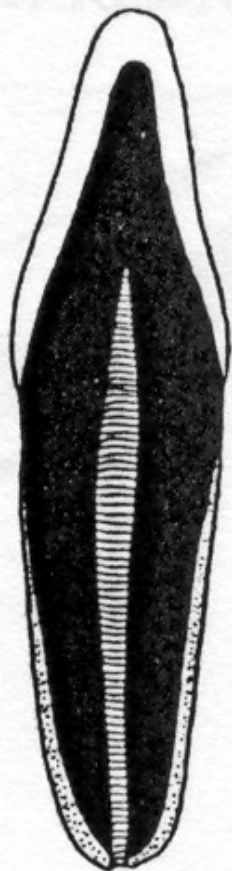
# Vznik čelistí u rybovitých obratlovců





## Lebky obratlovců

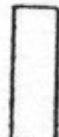





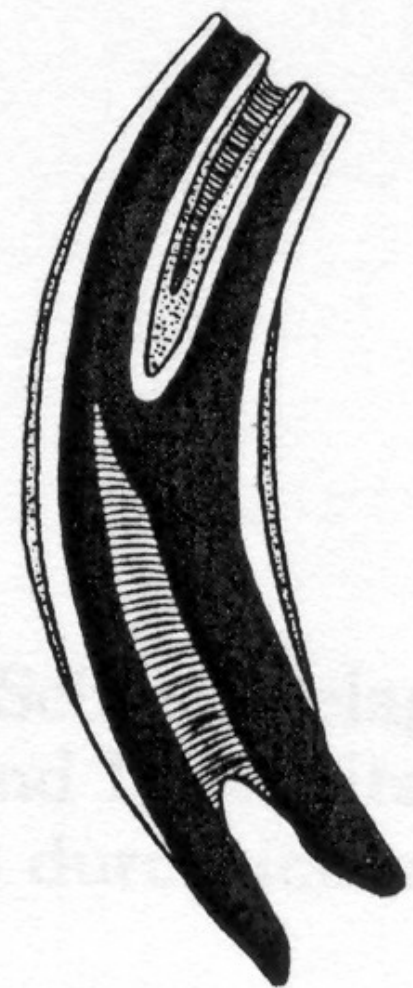


A



B

-  Enamel
-  Schmelz
-  Dentine
-  Bein
-  Cement
-  Zement
-  Tooth hole
-  Wurzelhöhle

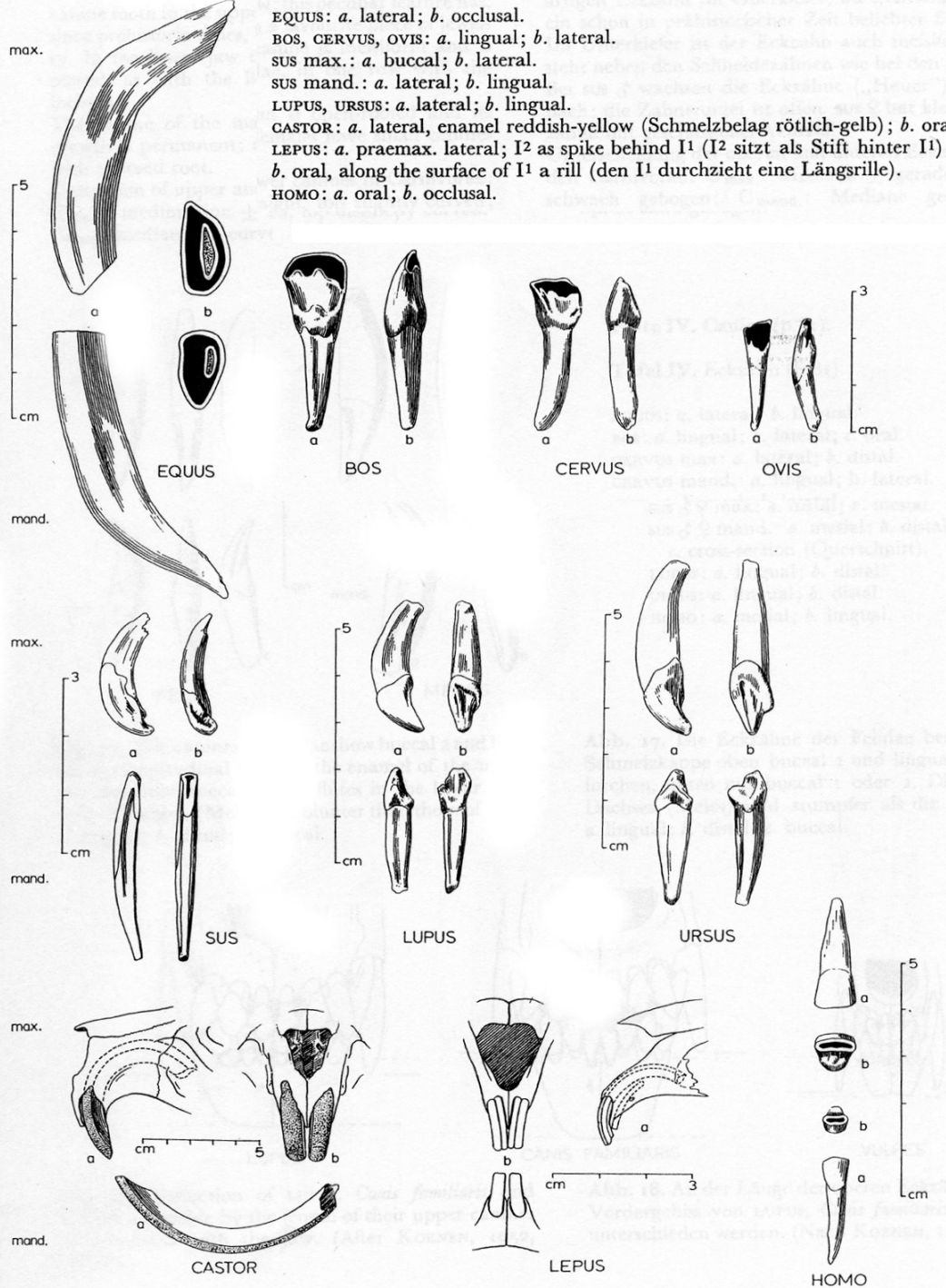


C



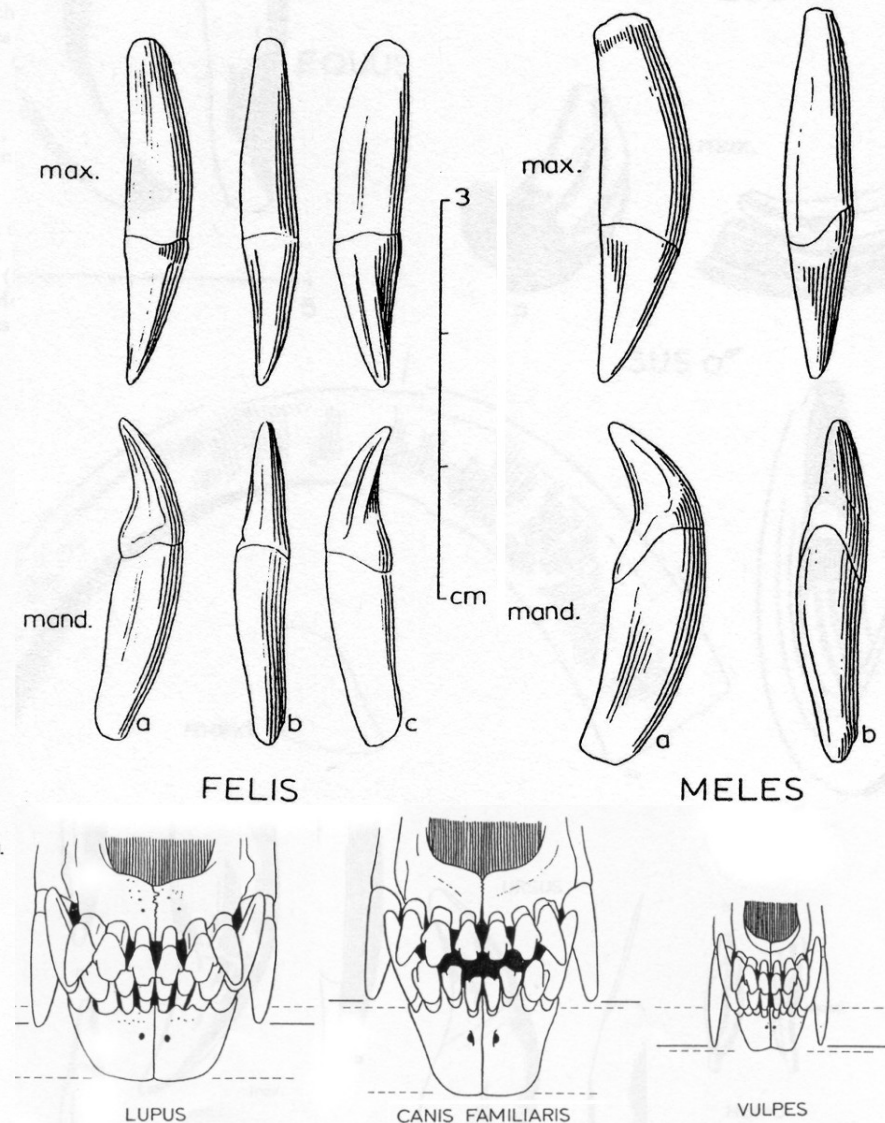
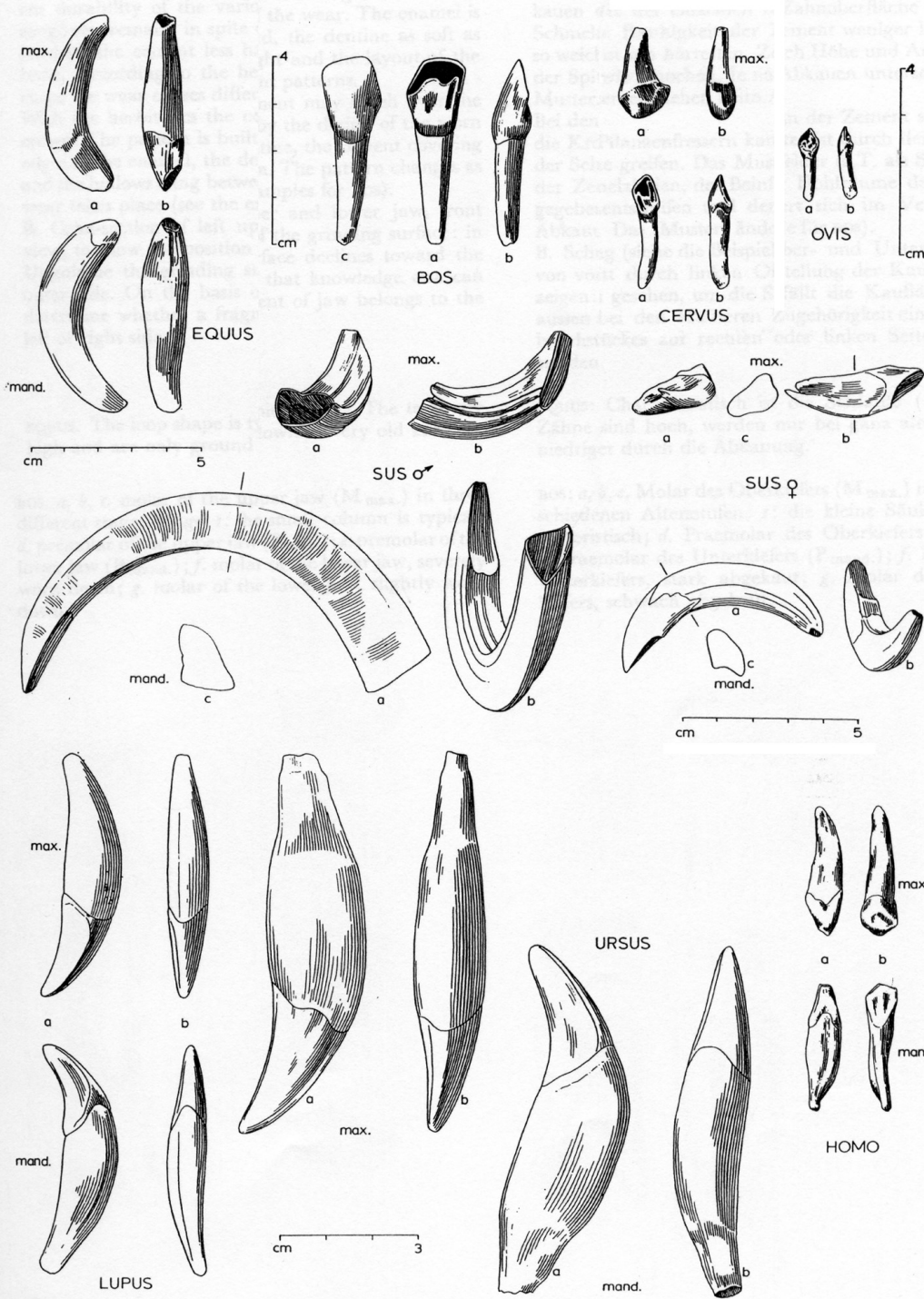
D

EQUUS: *a.* lateral; *b.* occlusal.  
 BOS, CERVUS, OVIS: *a.* lingual; *b.* lateral.  
 SUS max.: *a.* buccal; *b.* lateral.  
 SUS mand.: *a.* lateral; *b.* lingual.  
 LUPUS, URSUS: *a.* lateral; *b.* lingual.  
 CASTOR: *a.* lateral, enamel reddish-yellow (Schmelzbelag rötlich-gelb); *b.* oral.  
 LEPUS: *a.* praemax. lateral; I<sup>2</sup> as spike behind I<sup>1</sup> (I<sup>2</sup> sitzt als Stift hinter I<sup>1</sup>);  
*b.* oral, along the surface of I<sup>1</sup> a rill (den I<sup>1</sup> durchzieht eine Längsrille).  
 HOMO: *a.* oral; *b.* occlusal.

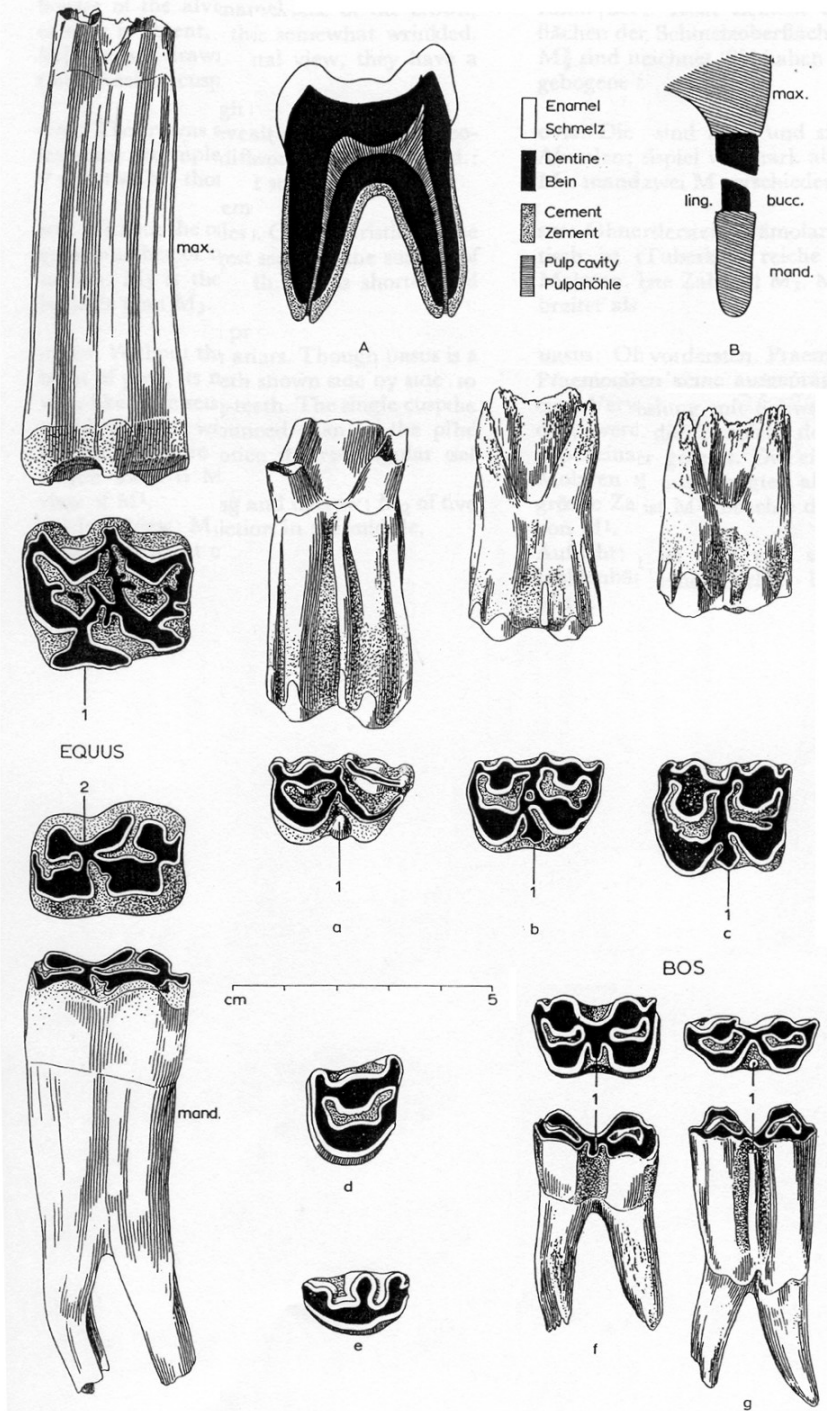
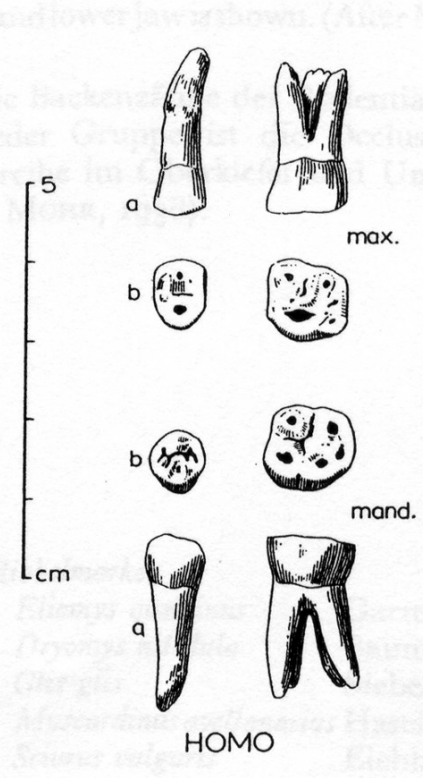
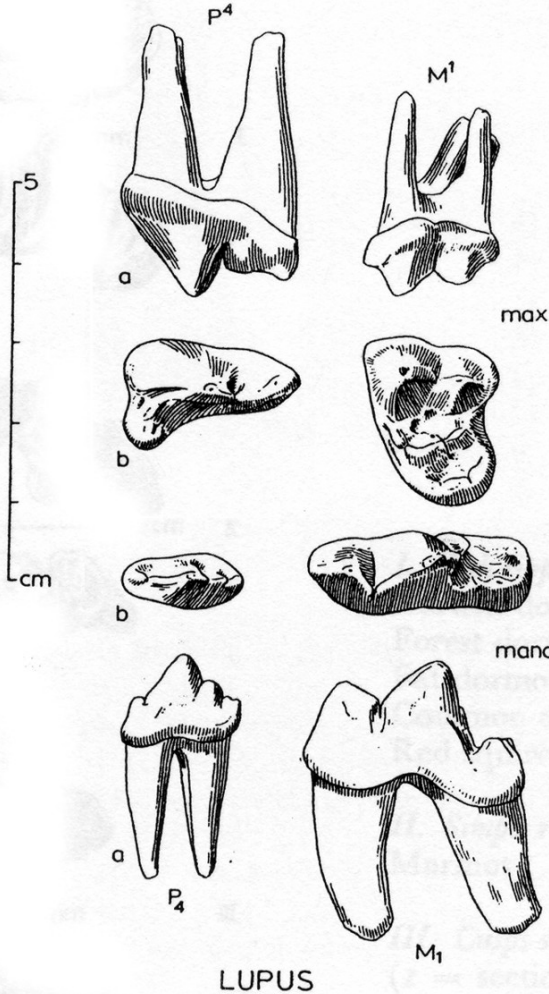


## Porovnání řezáků různých druhů zvířat a člověka

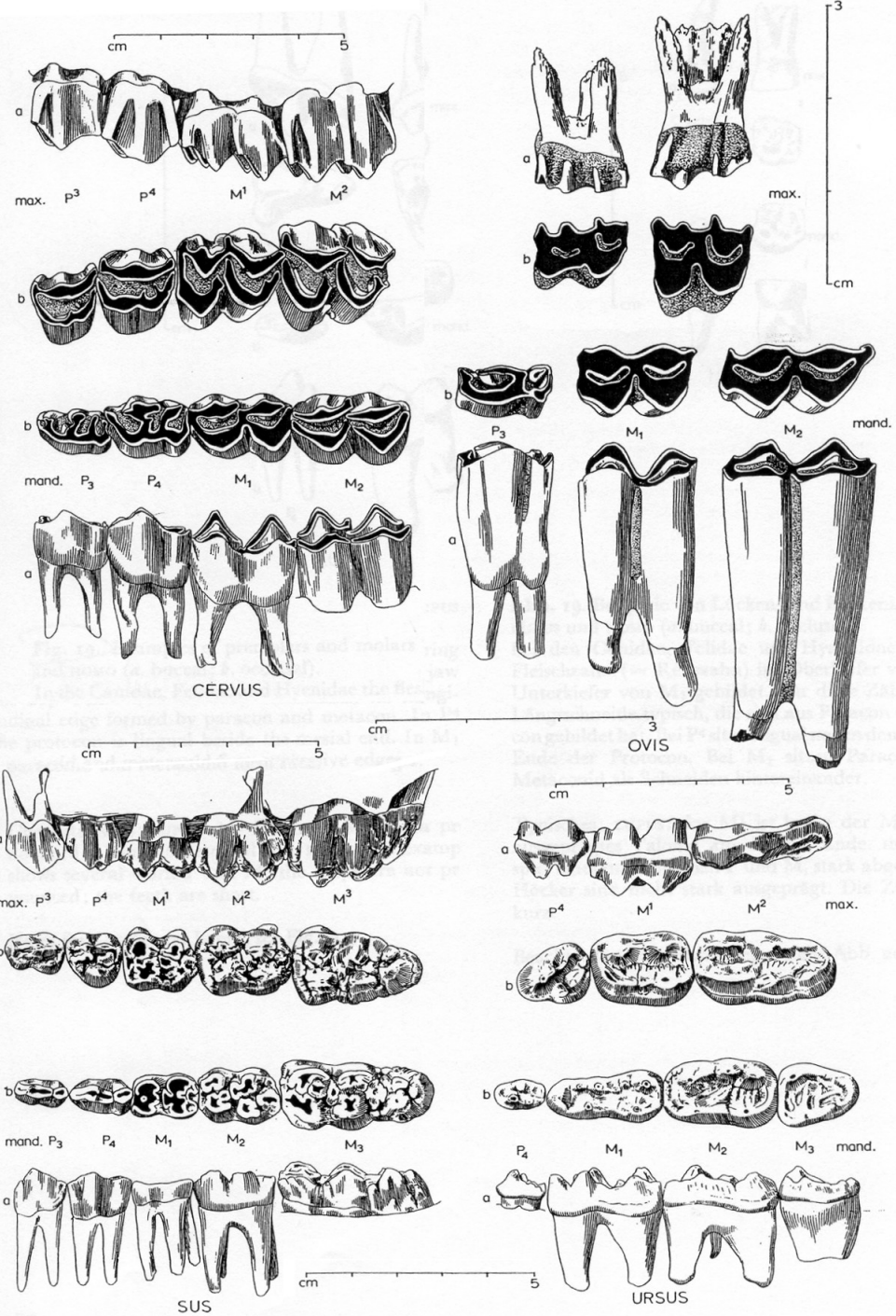
# Porovnání špičáků různých druhů zvířat a člověka



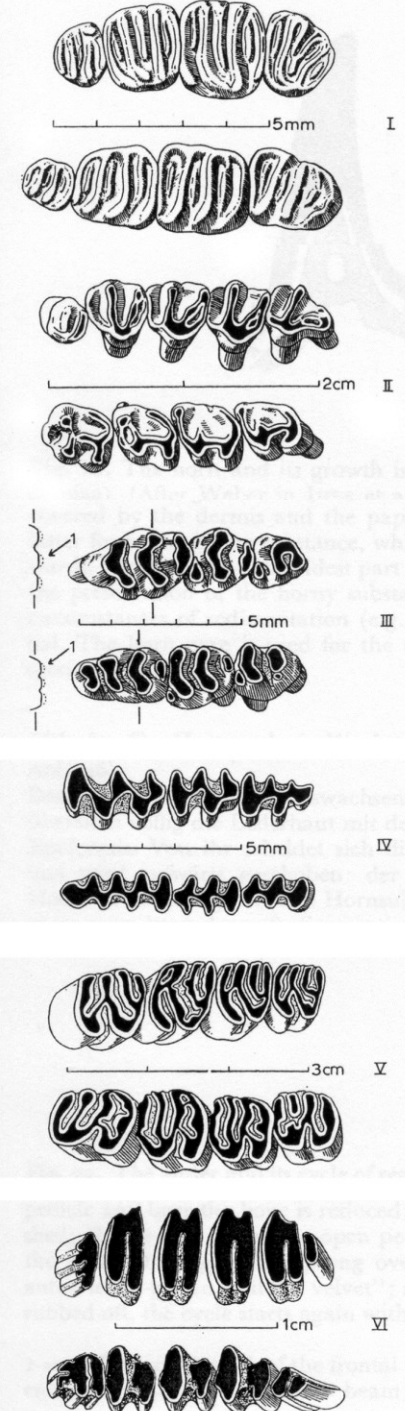




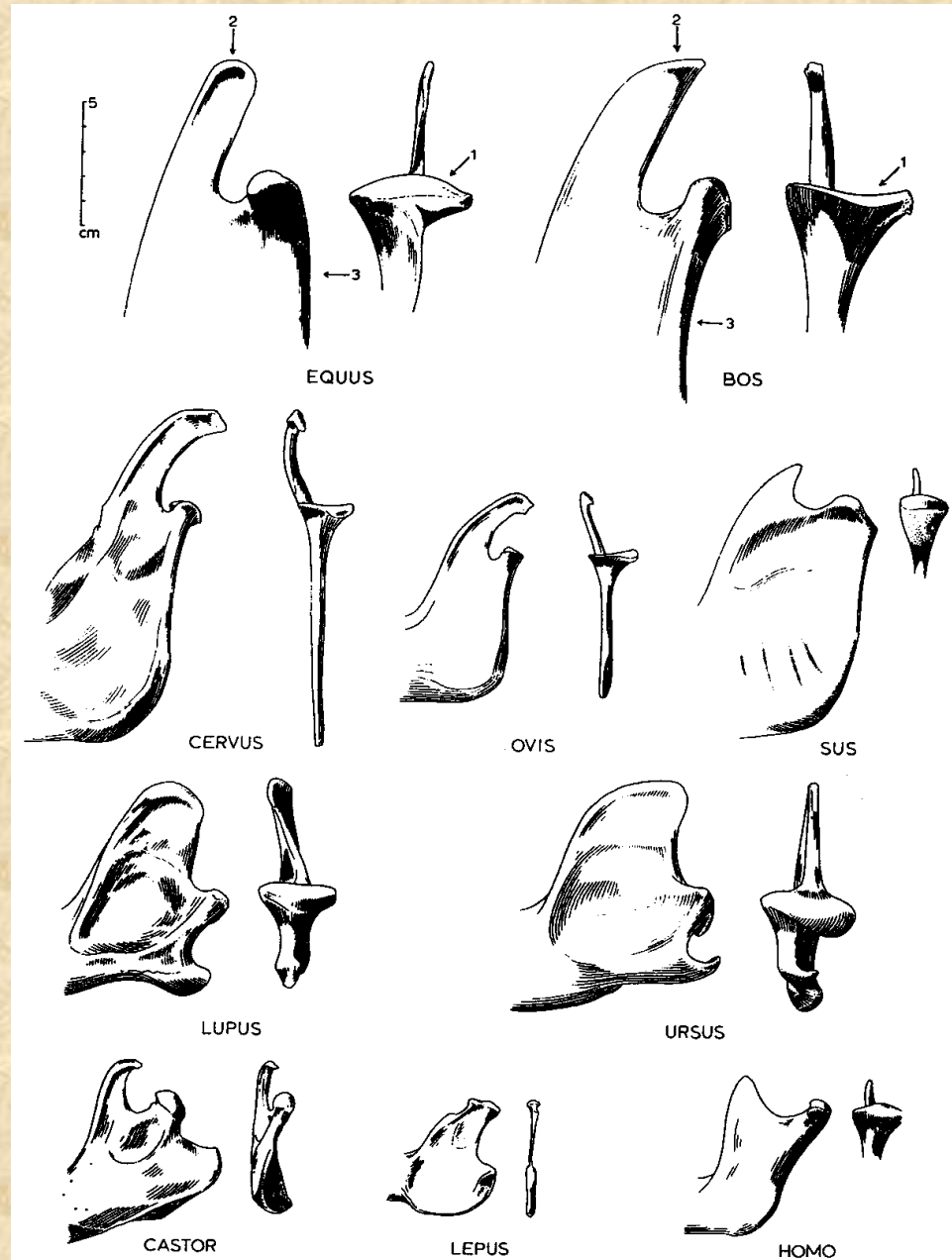
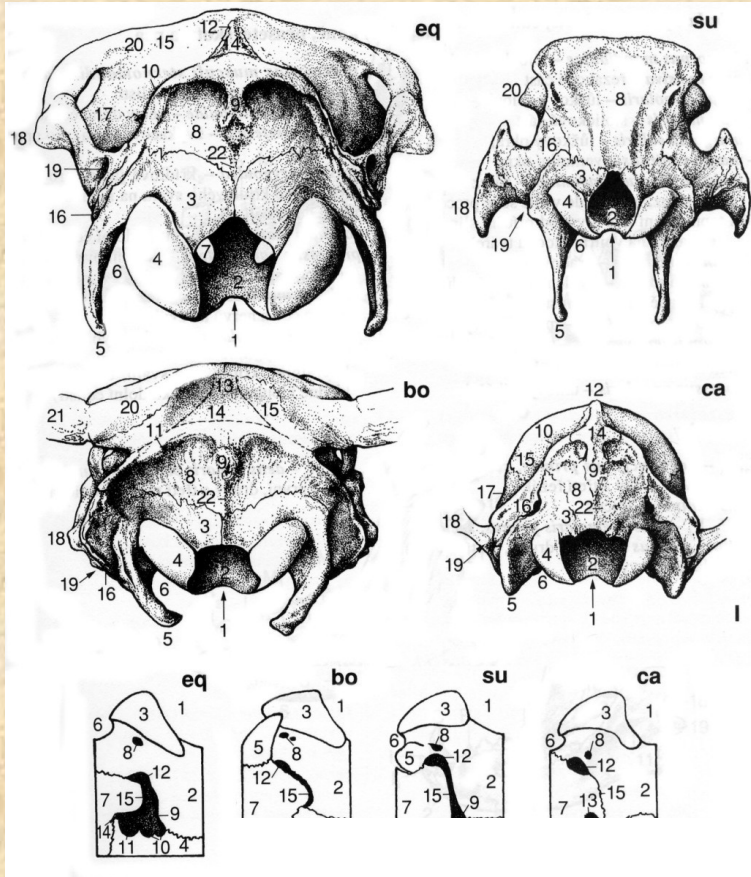
**Porovnání třenových zubů  
a stoliček různých druhů zvířat  
a člověka**



**Porovnání stoliček  
různých druhů zvířat**



# Týlní části lebek a spodních čelistí



# Rohy a parohy

