

Základy osteologie

Obratle, žebra a kosti přední končetiny



A. Perri and S. Sázelová

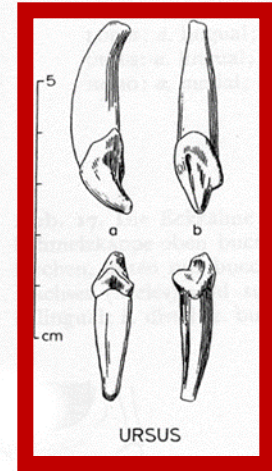
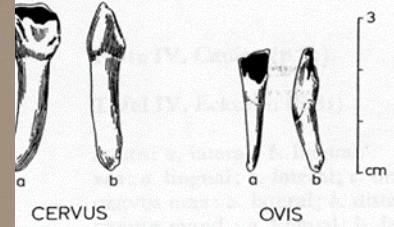


Figure 4a-c. Example of wolf left side mandible with traces of misalignment and *periodontitis* between P₃ and M₂ (a); detail of atypical abrasion on lingual side of canine (scale=5cm) (b); and detail on periodontitic lesions under M₁ causing pathological deformation in alveolar followed by barring of tooth neck and roots (c).

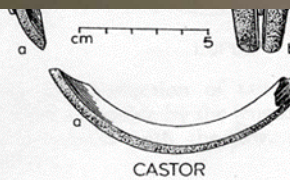
max.



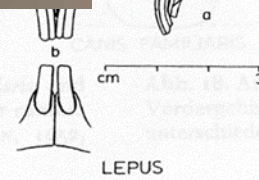
EQUUS: a. lateral; b. occlusal.
 BOS, CERVUS, OVIS: a. lingual; b. lateral.
 SUS max.: a. buccal; b. lateral.
 SUS mand.: a. lateral; b. lingual.



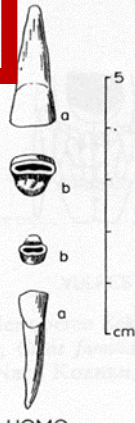
mand.



CASTOR



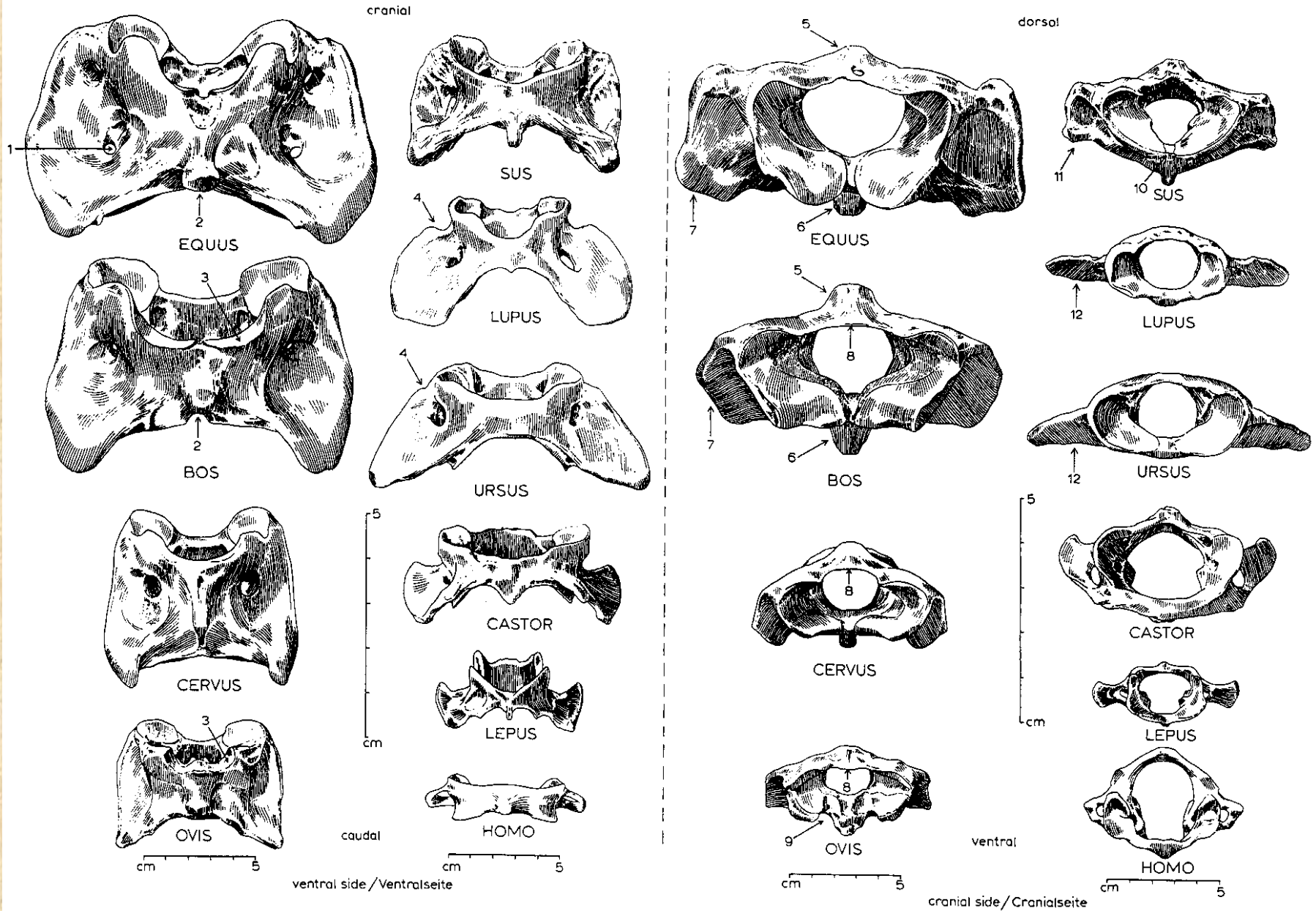
LEPUS



HOMO

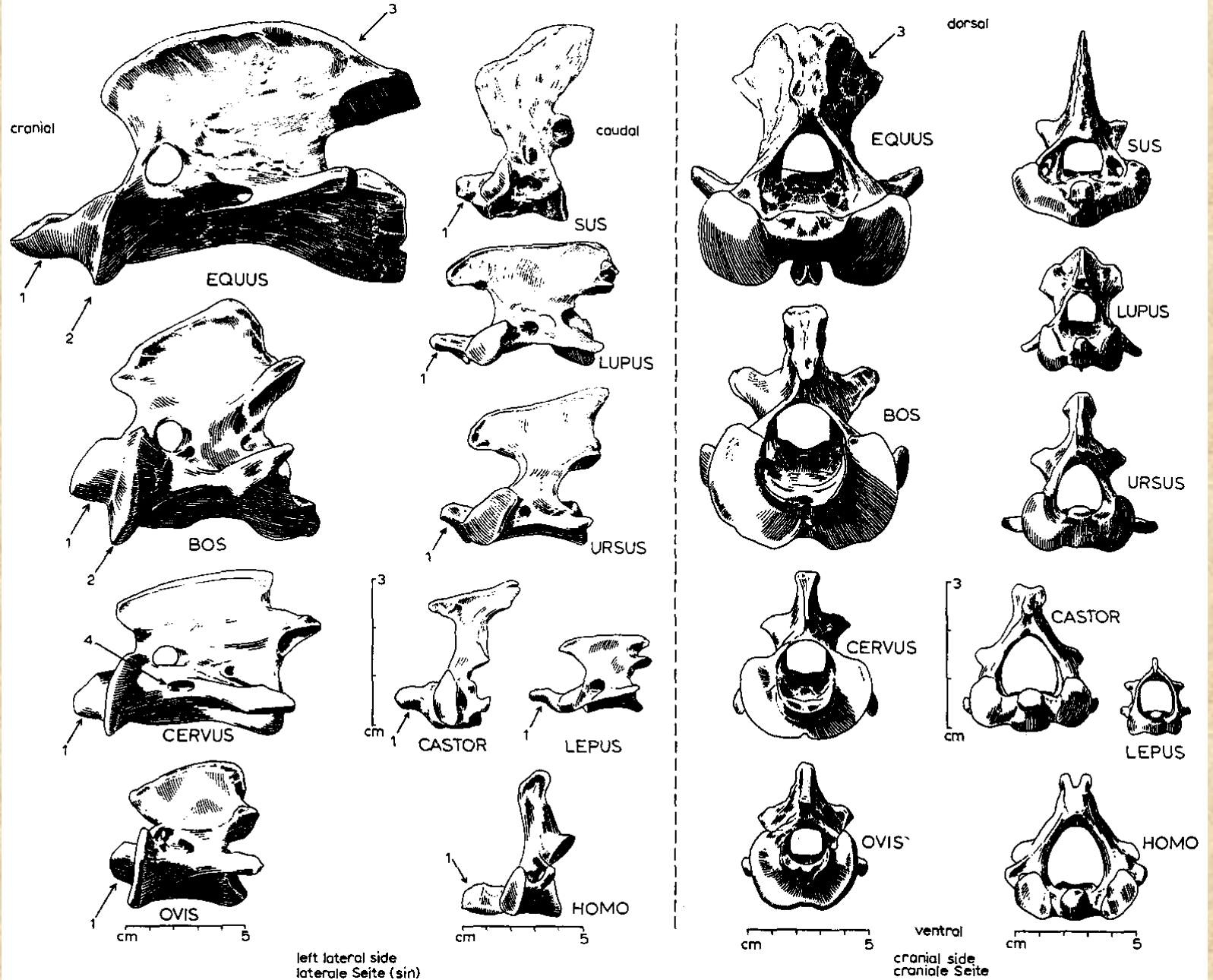
Obratle a žebra

Atlas (nosič)

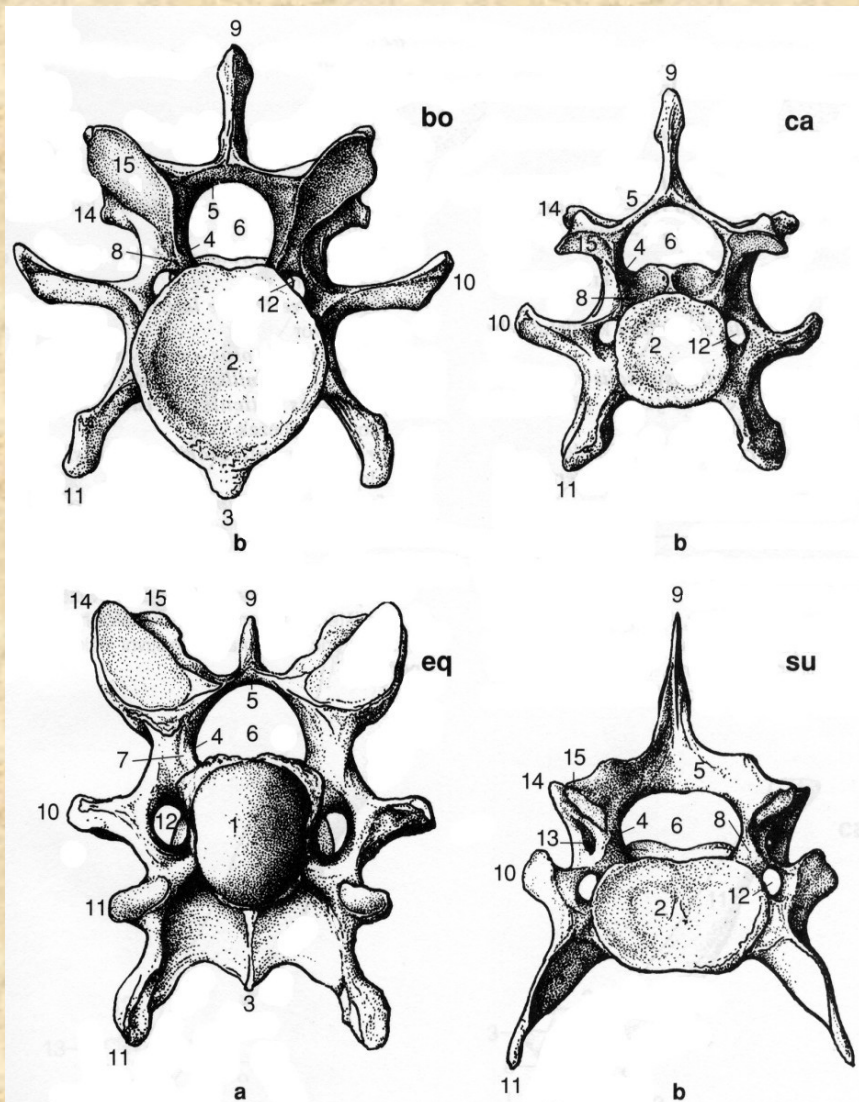


Obratle a žebra

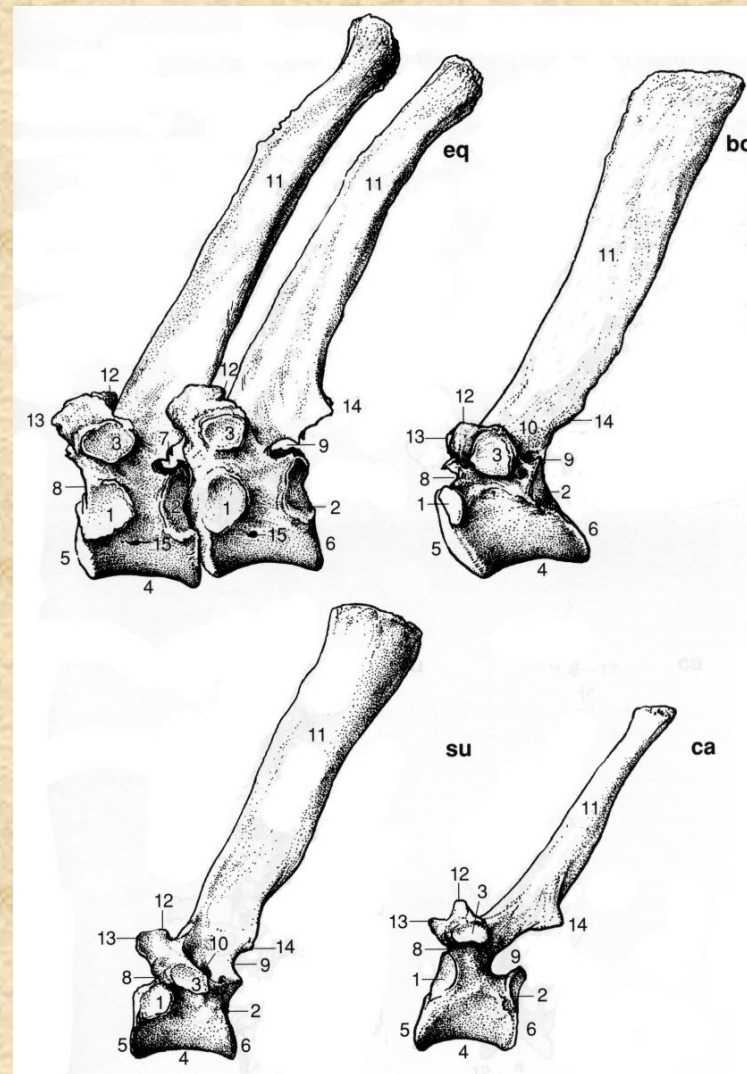
Epistrofeus (čepovec)



Obratle a žebra

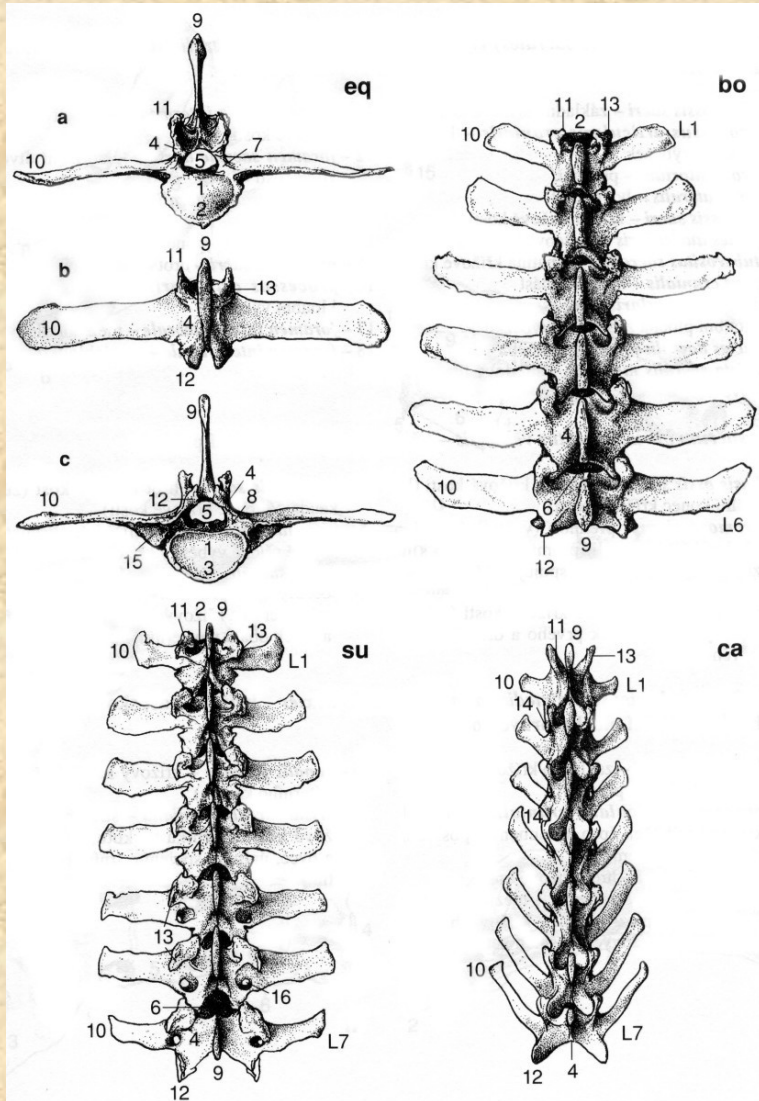


Krční obratle (*vertebra cervicis*)

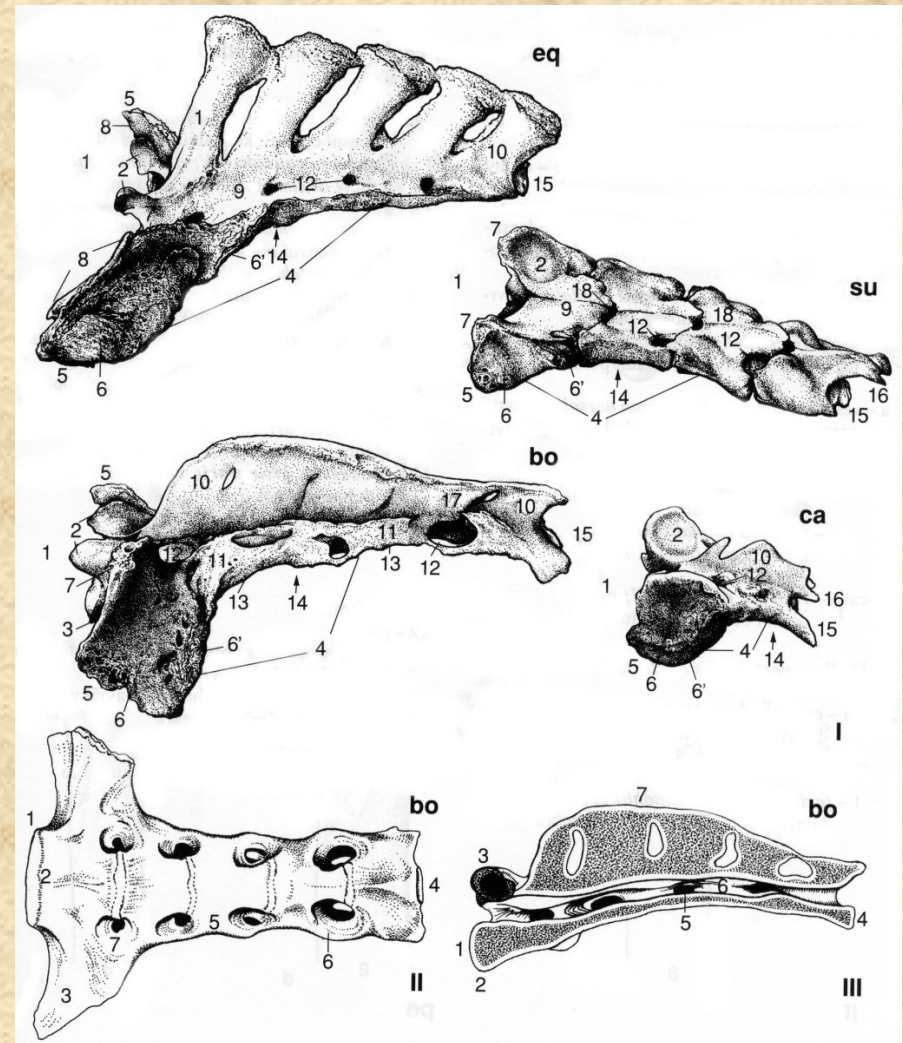


Hrudní obratle (*vertebrae thoracicae*)

Obratle a žebra

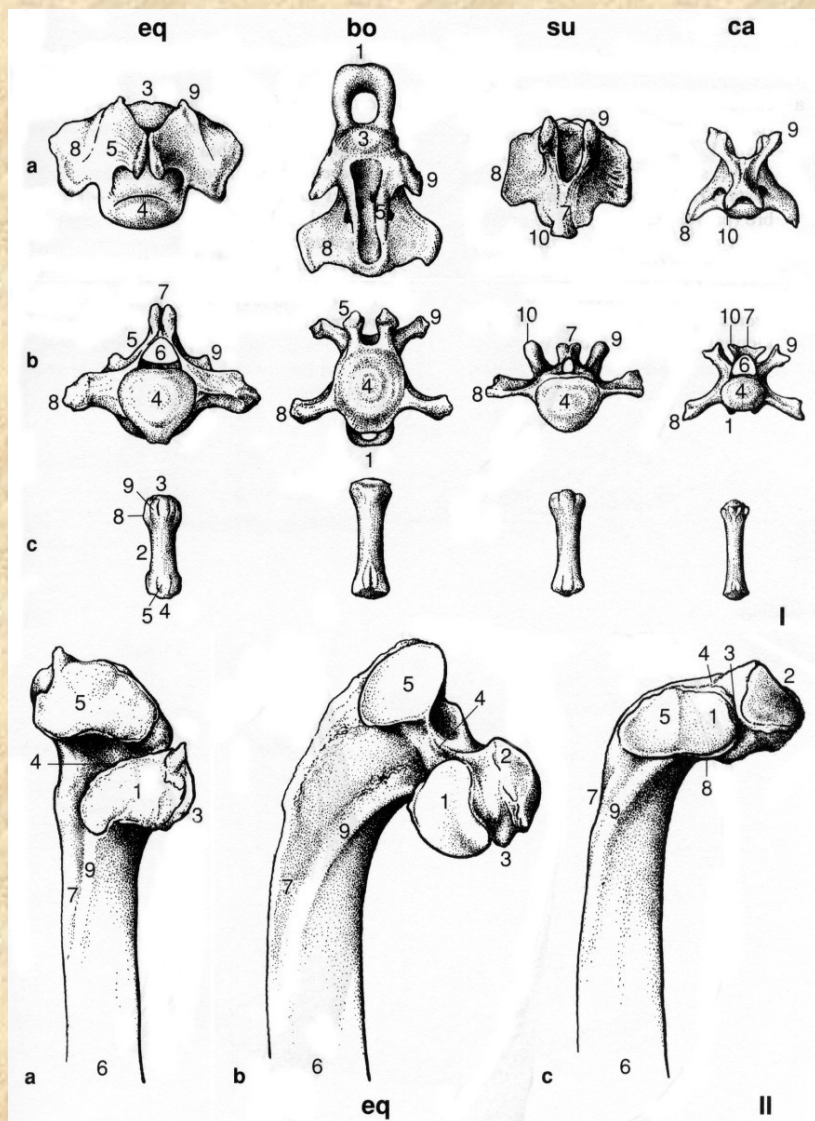


Bederní obratle (*vertebrae lumbales*)

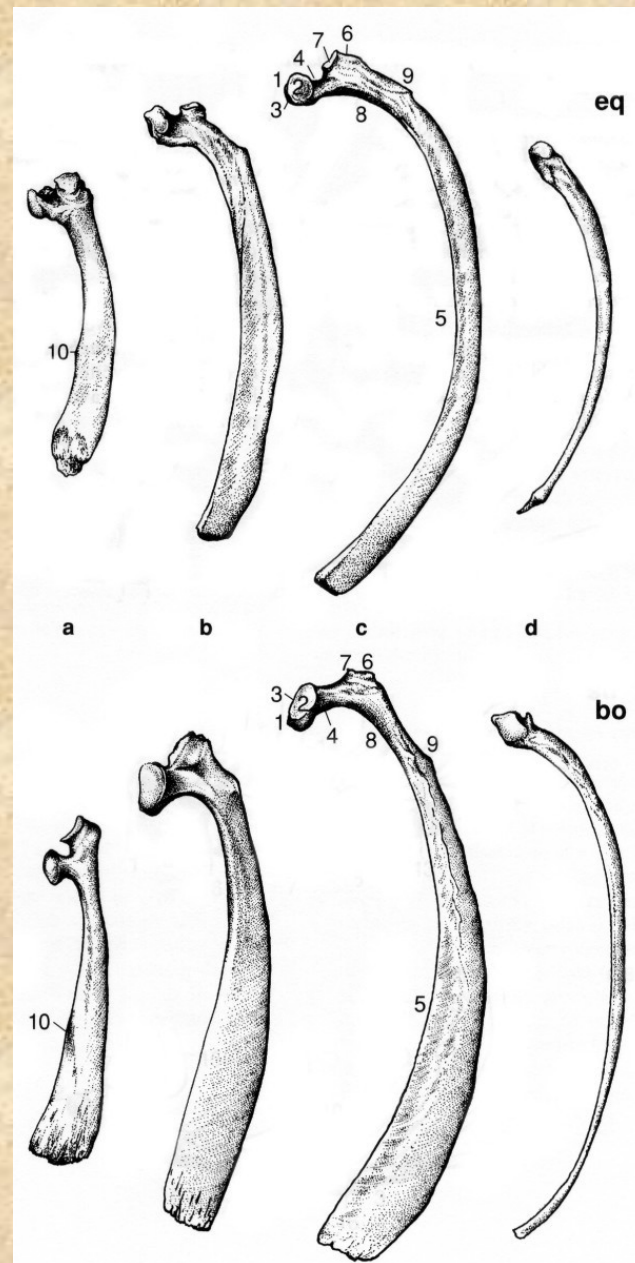


Kost křížová (*os sacrum*)

Obratle a žebra

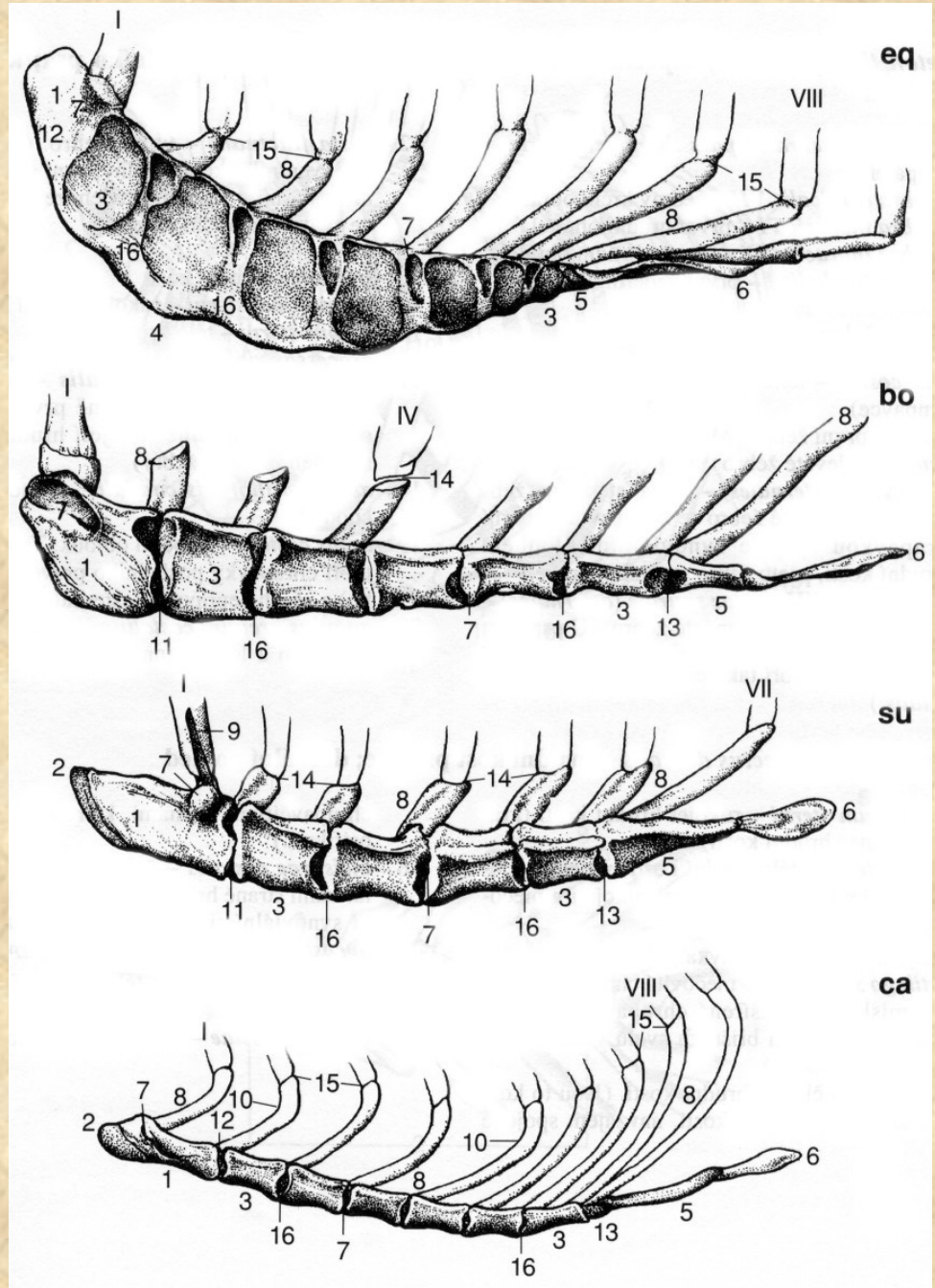


**Ocasní obratle (*vertebrae caudales*)
a hlavičky žebří (caput costae) koně**

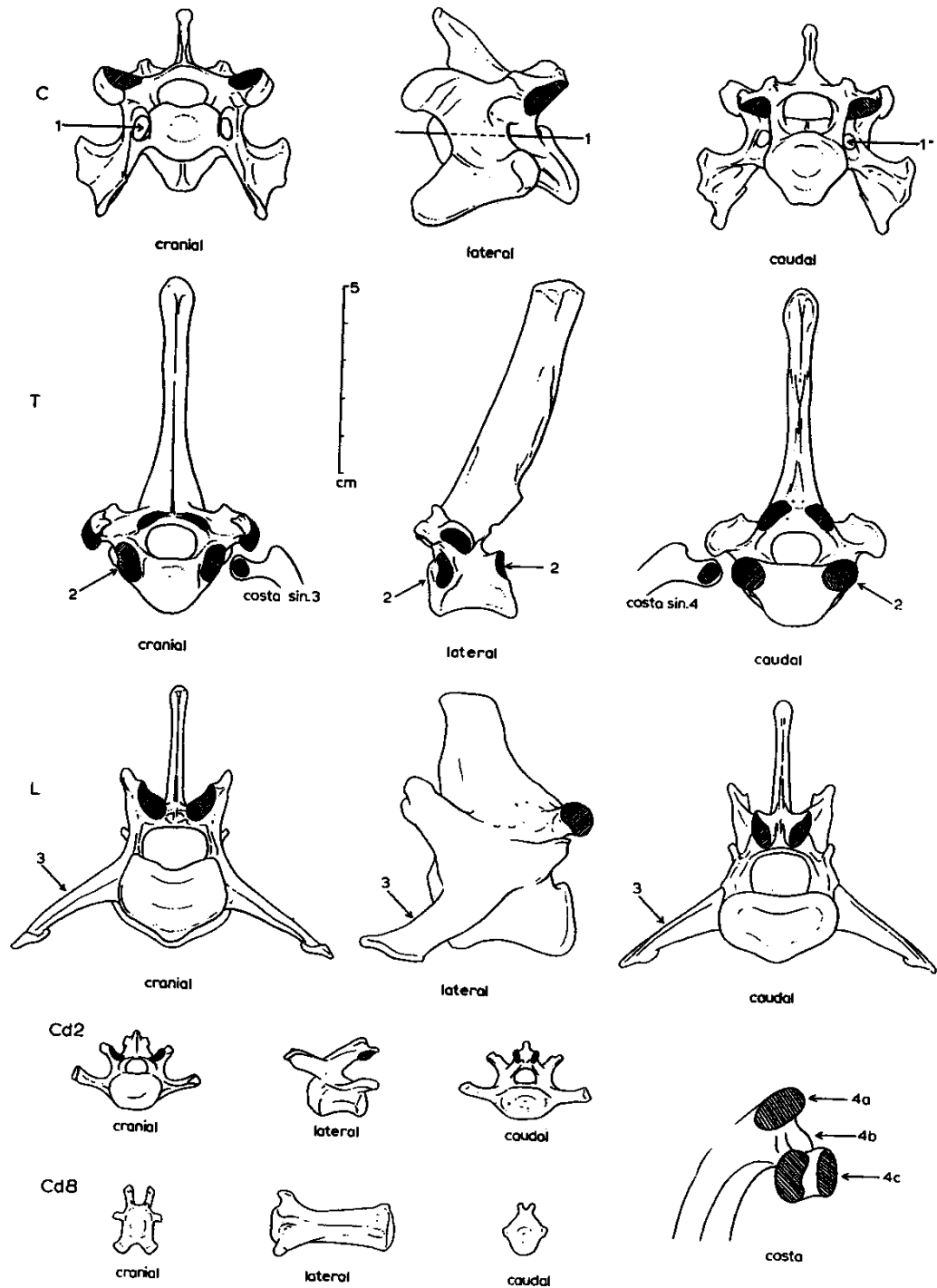


Žebra (*costae*)

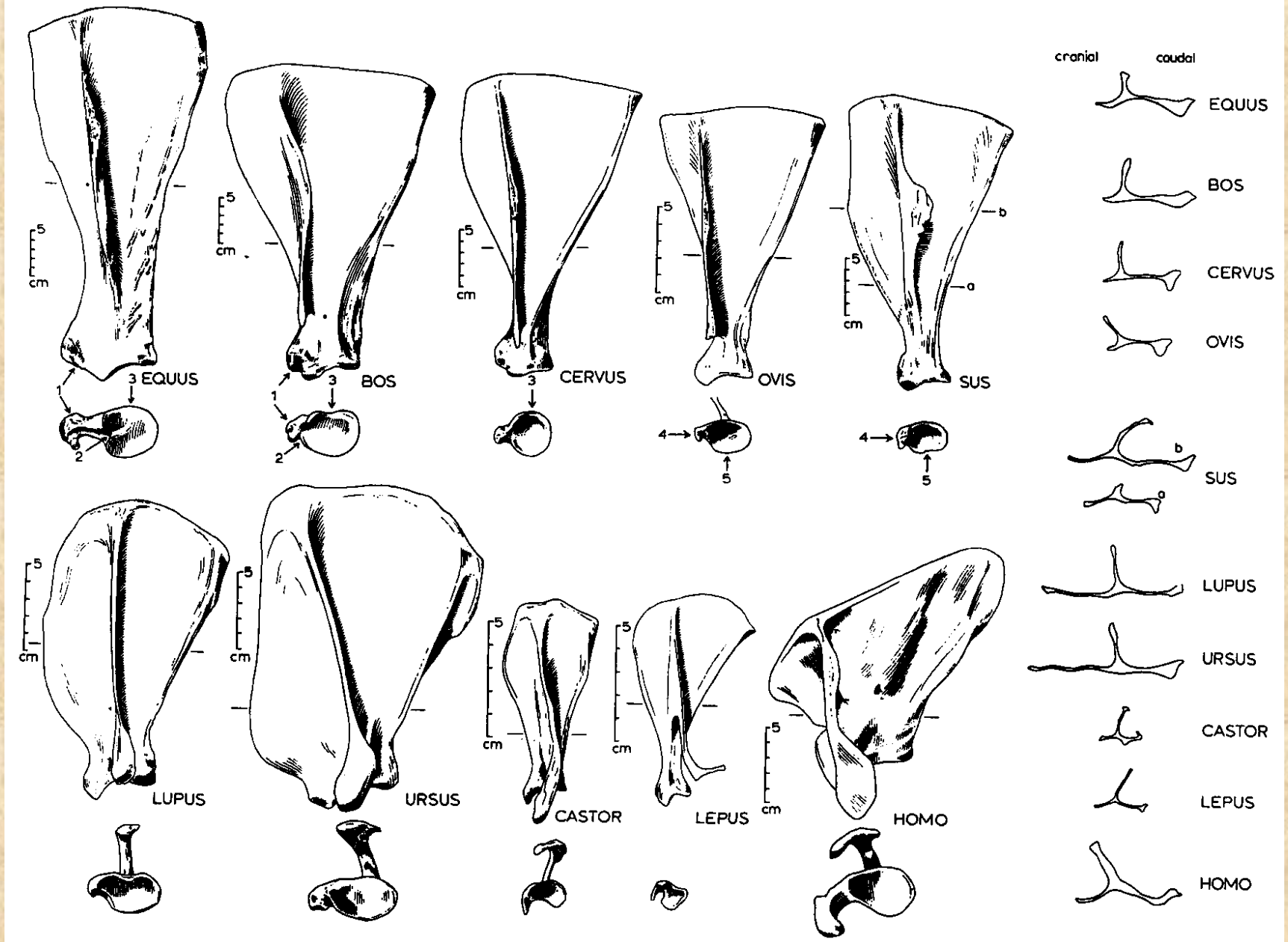
Hrudní kost (*sternum*)



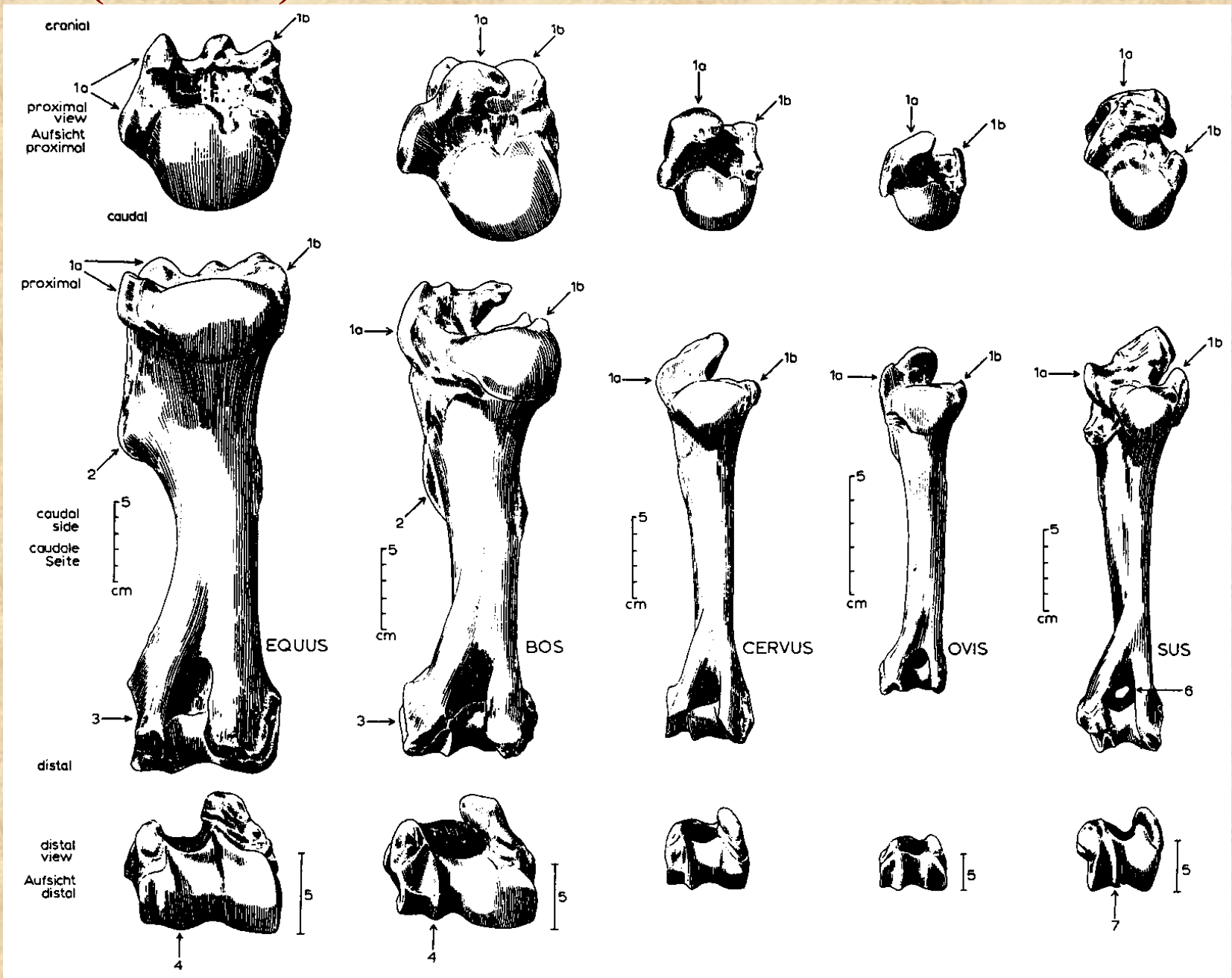
Obratle vlka



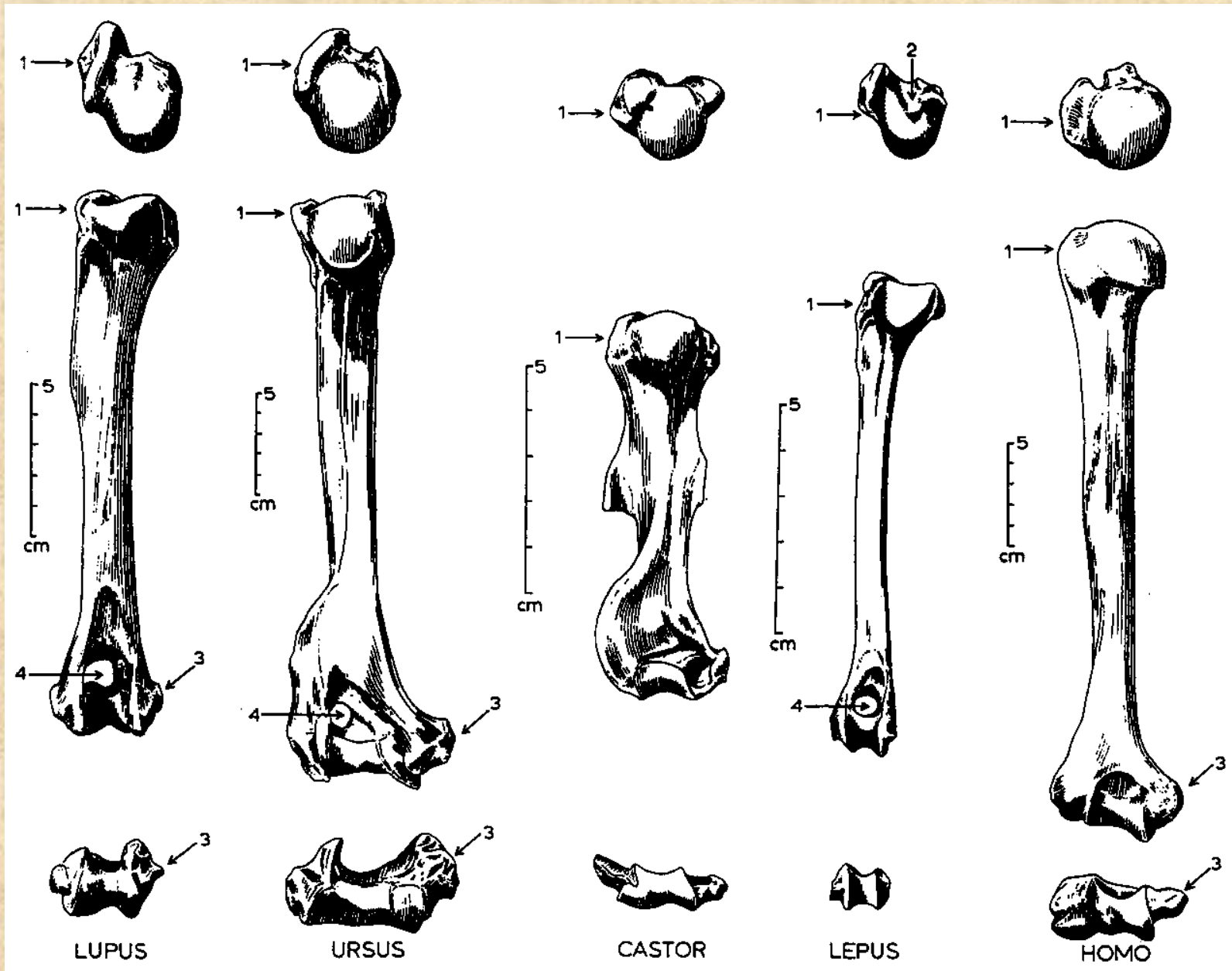
Lopatka (*scapula*)



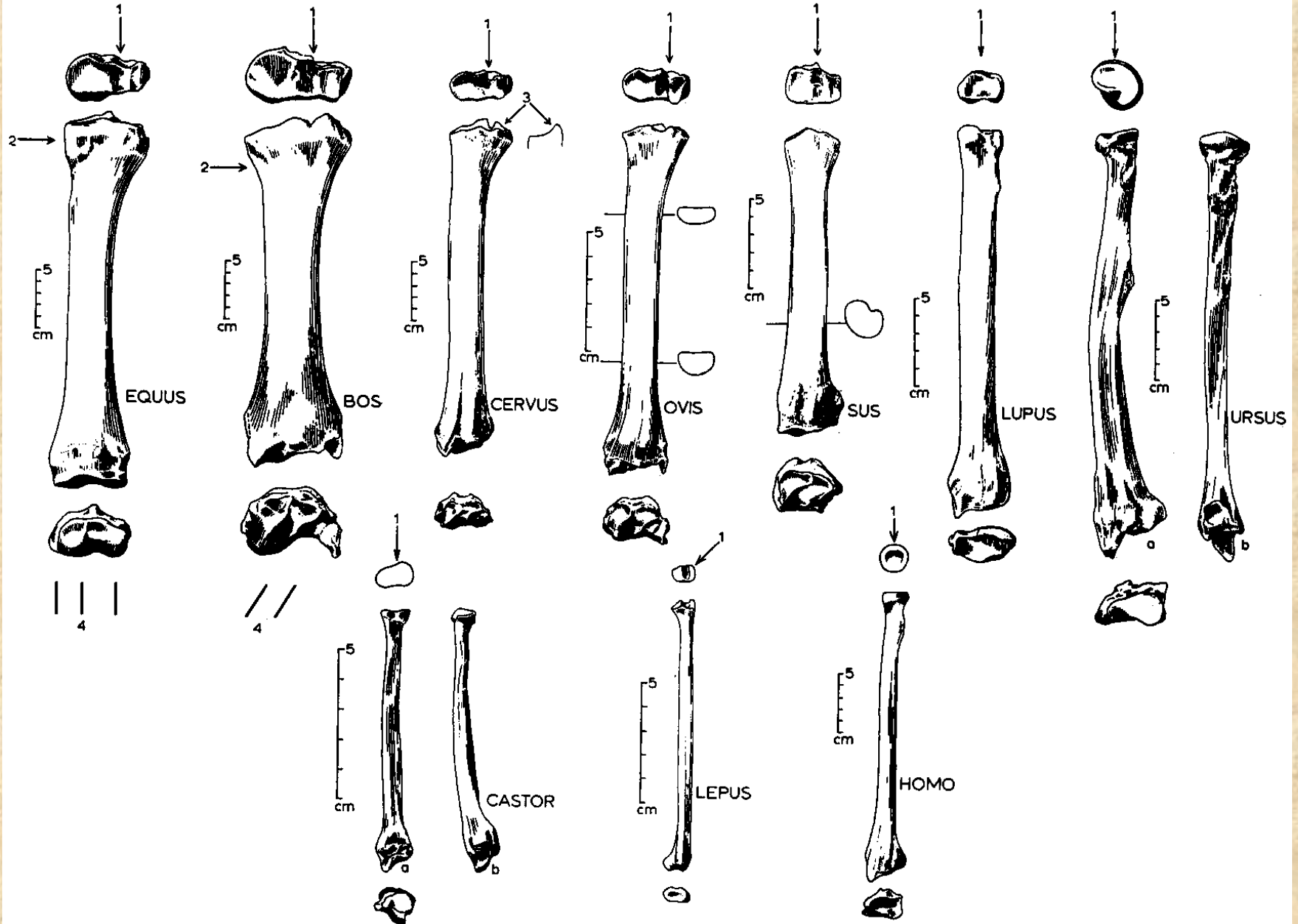
Pažní kost (*humerus*)



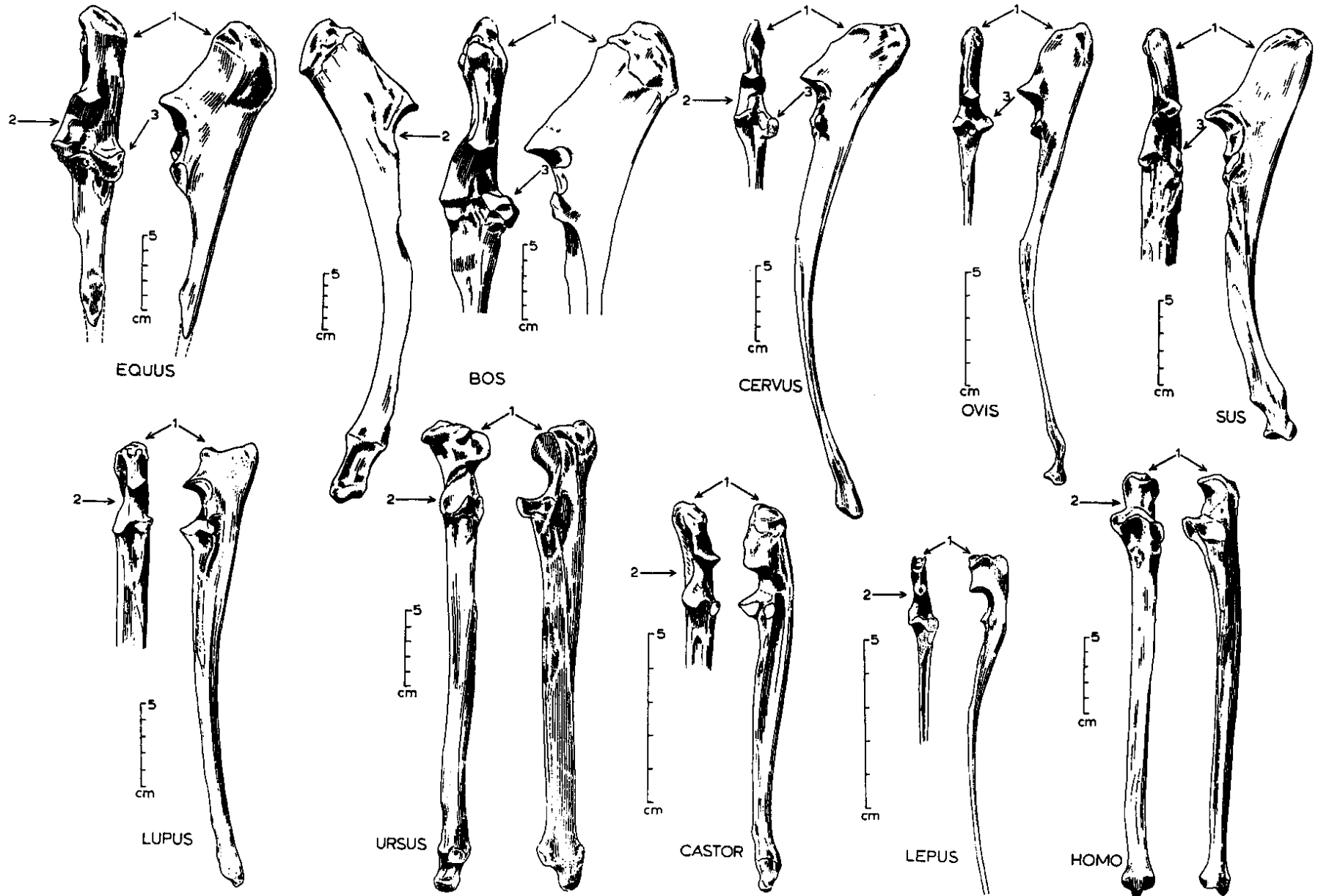
Pažní kost (*humerus*)



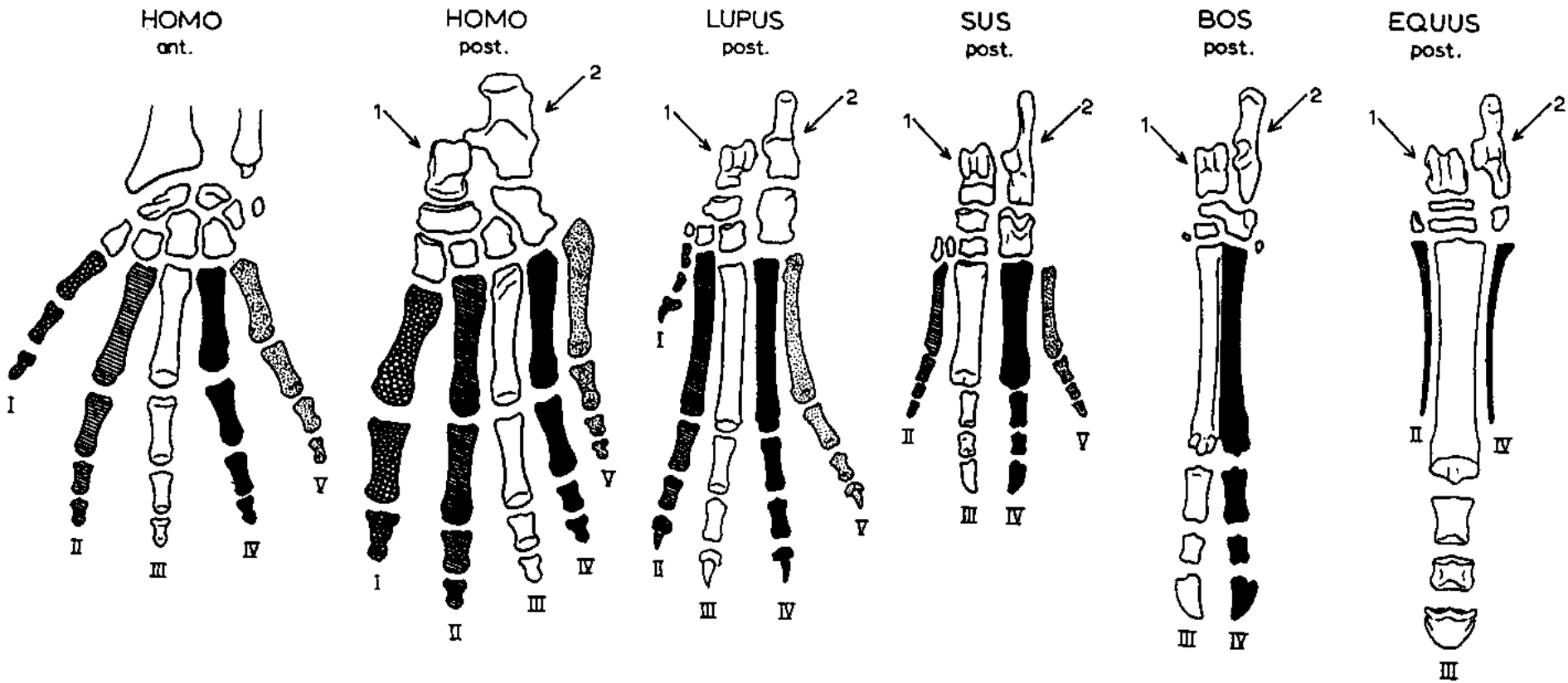
Vřetenní kost (*radius*)



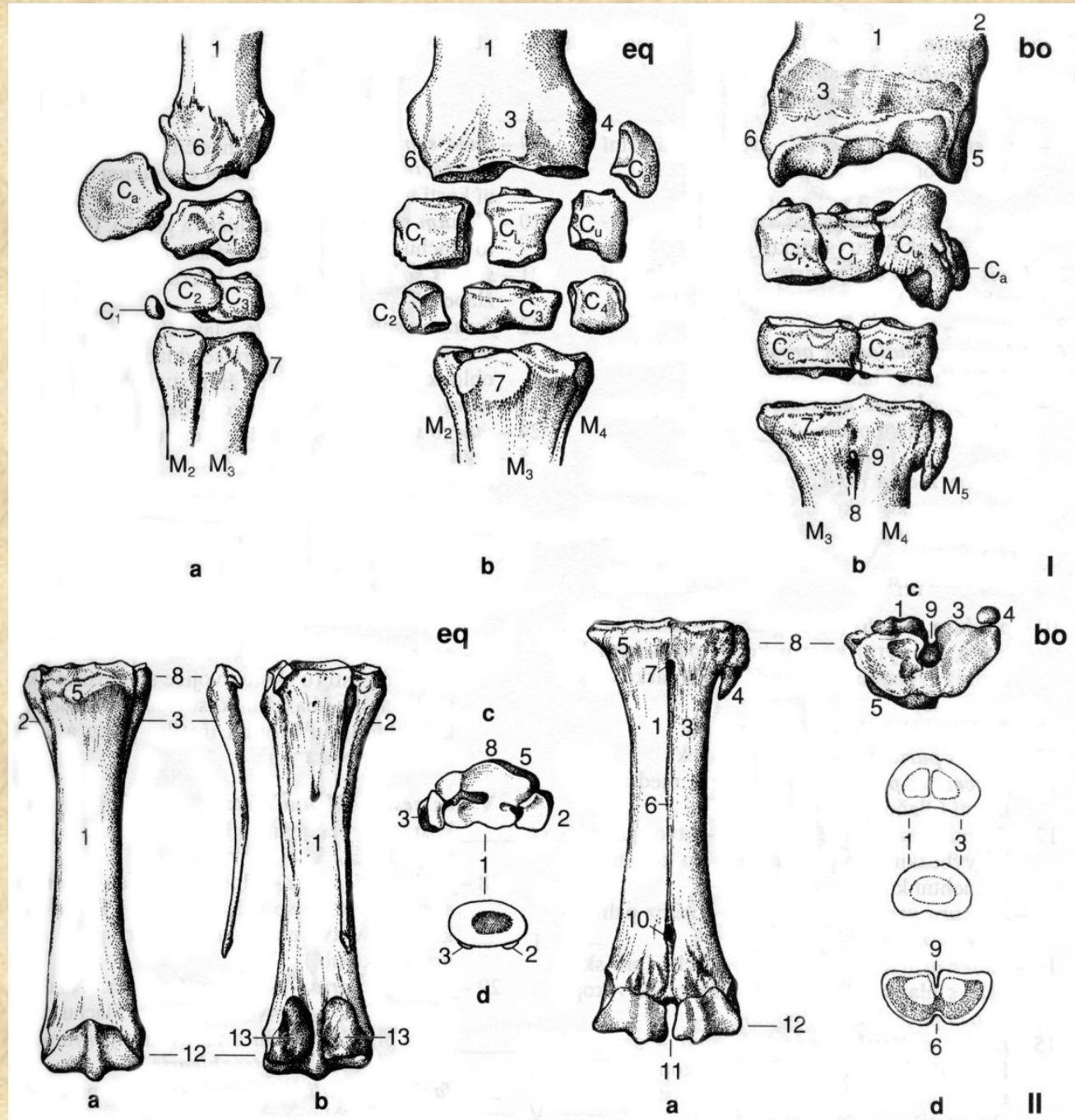
Loketní kost (*ulna*)



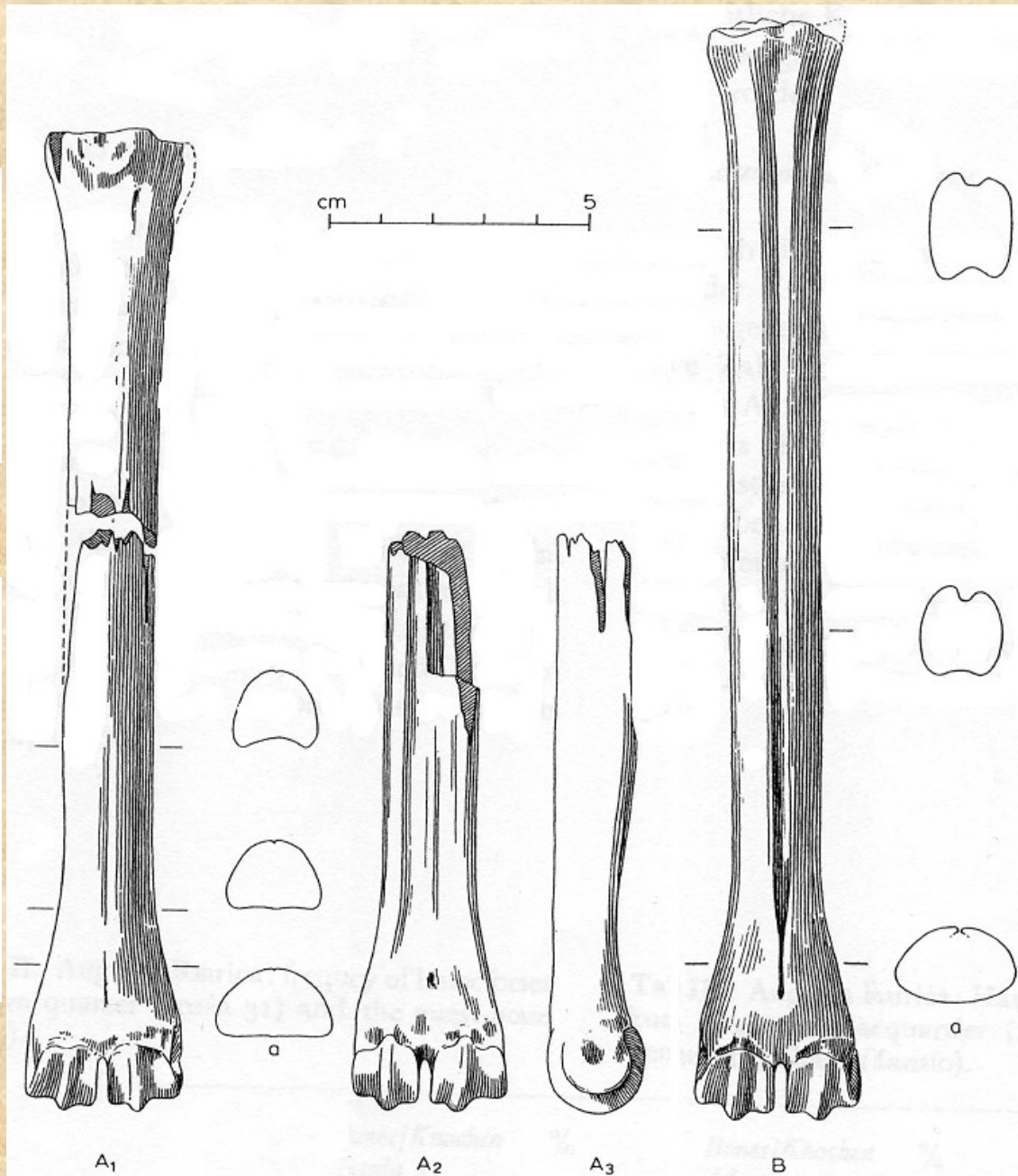
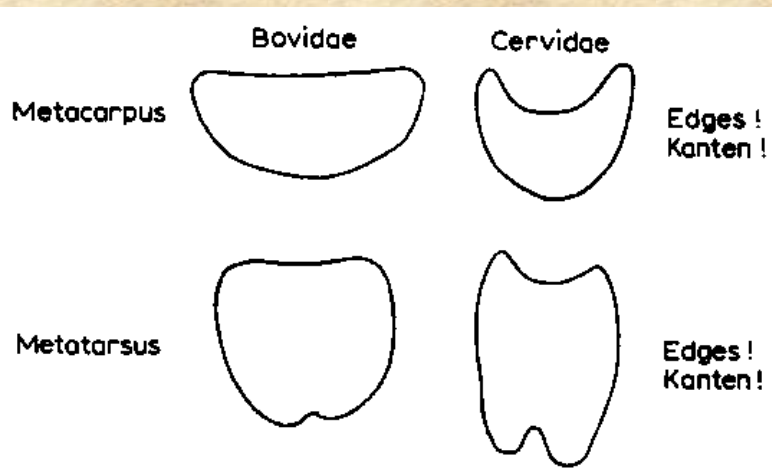
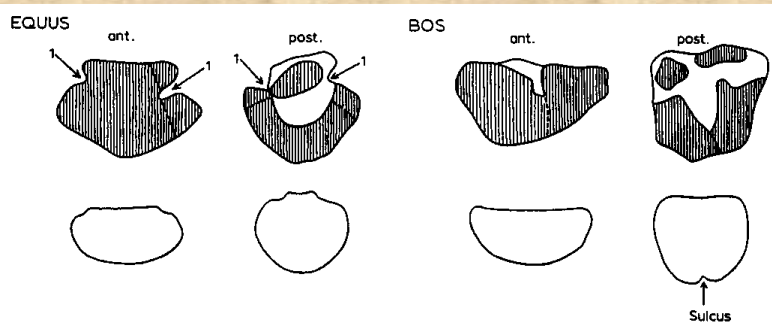
Stavba Autopodia



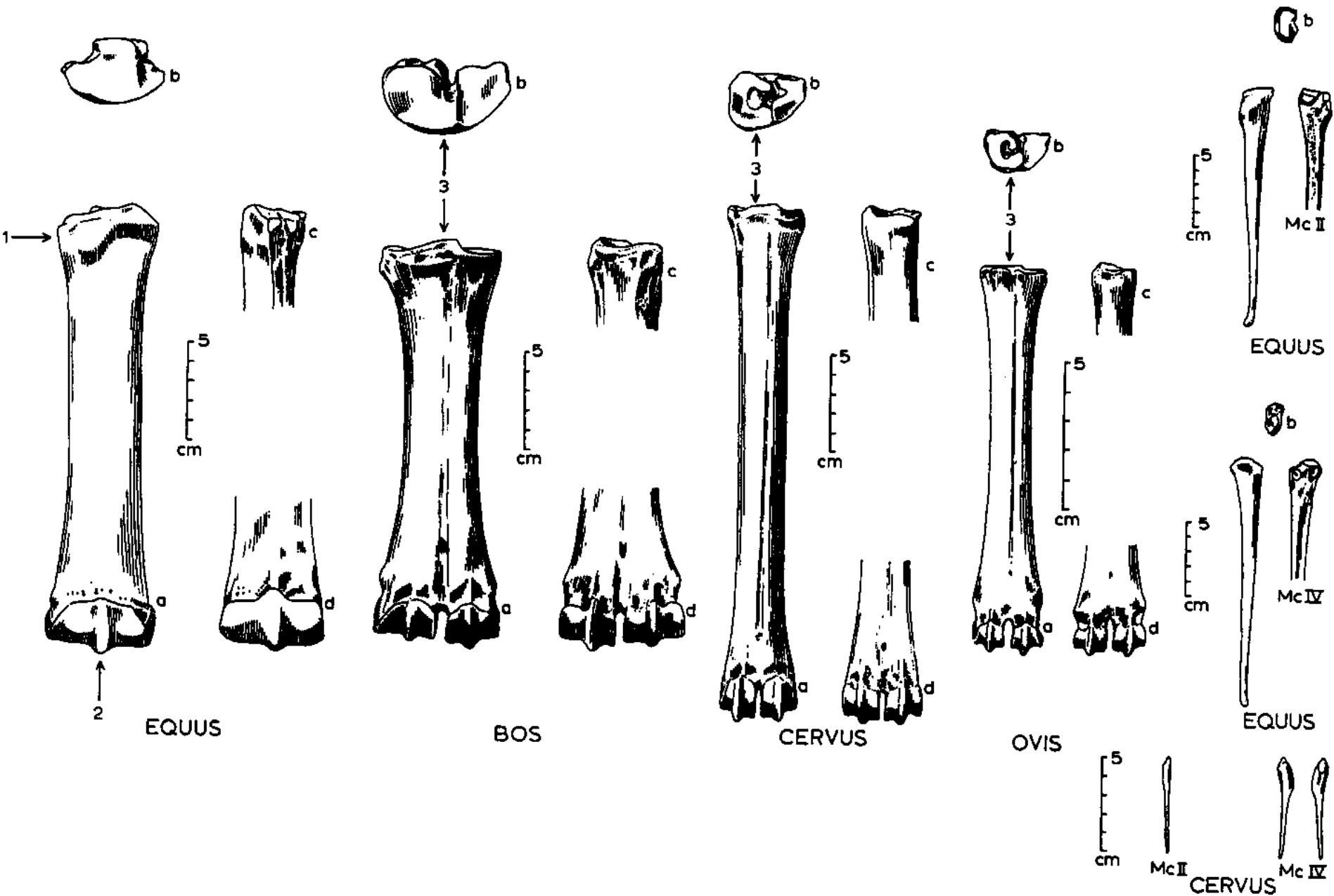
Zápěstí (*carpus*)



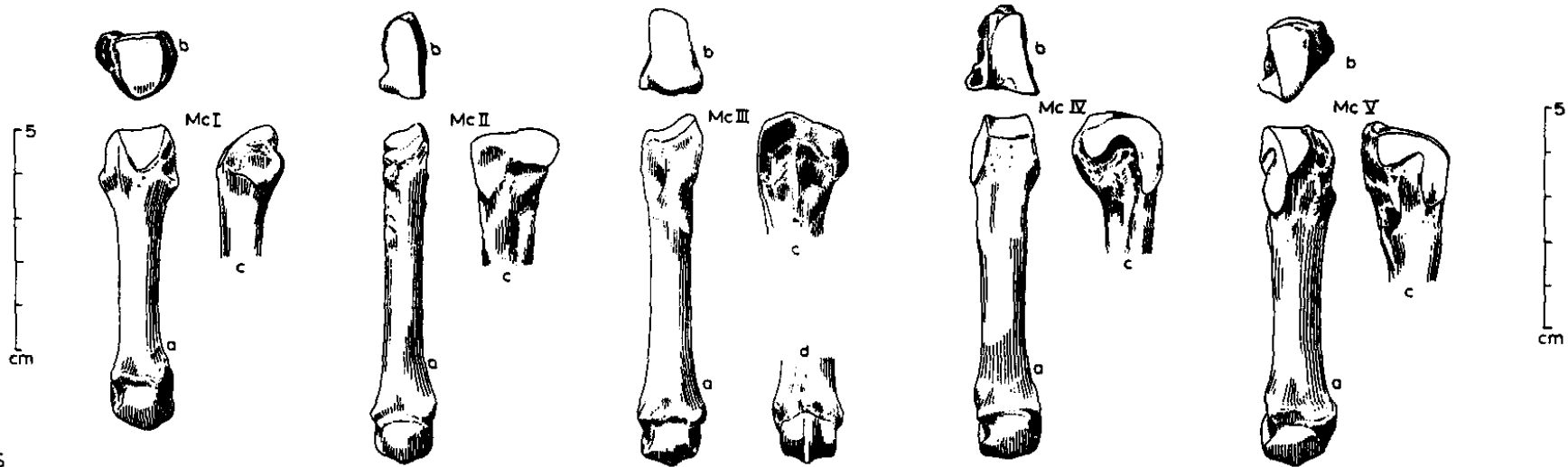
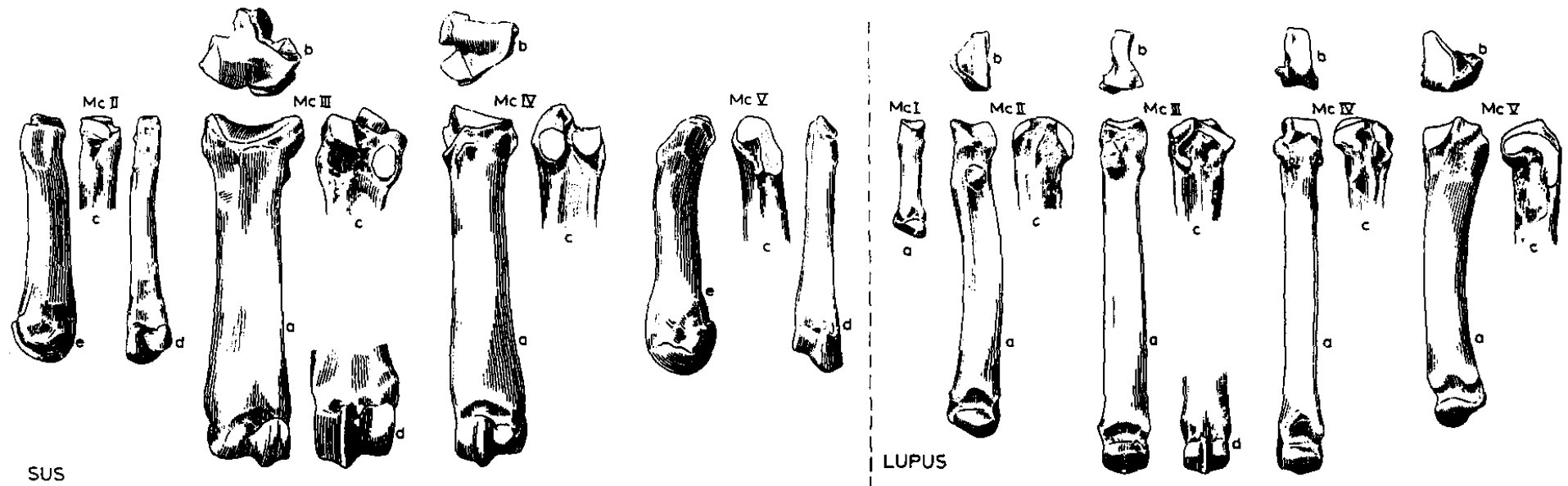
Rozdíl mezi záprstními a nártními kostmi



Záprstní kosti (*metacarpalia*)

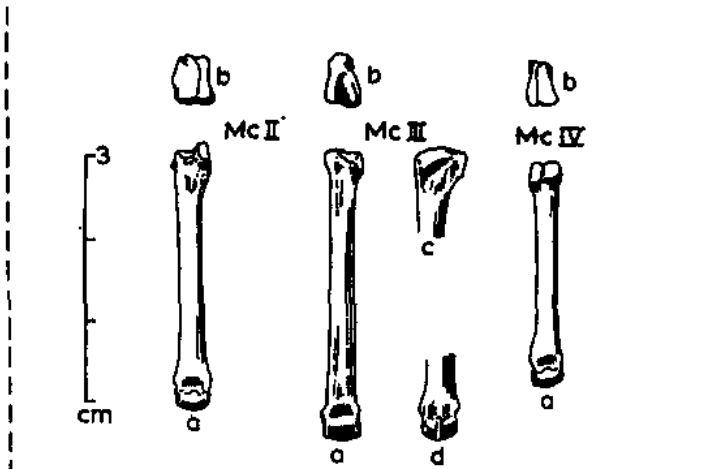
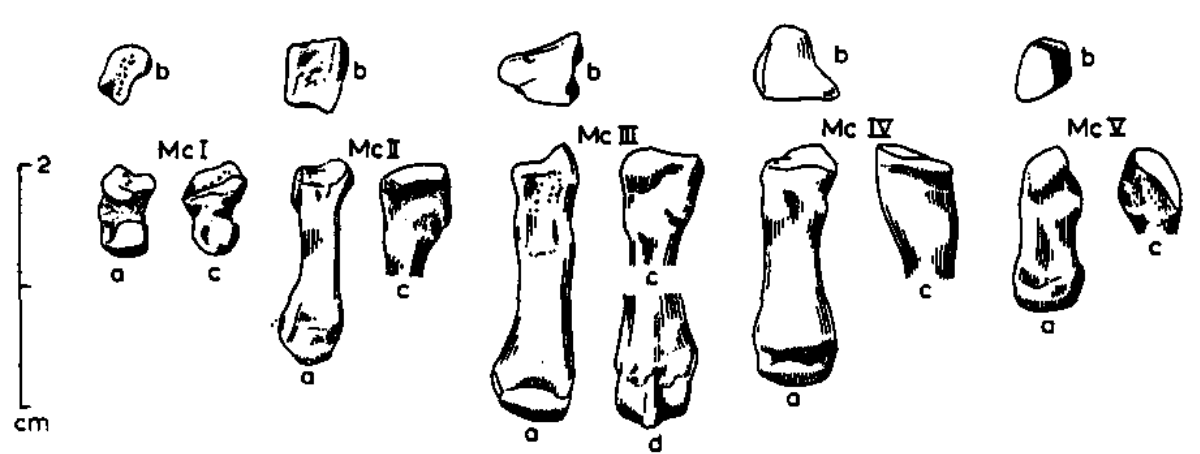


Záprstní kosti (*metacarpalia*)



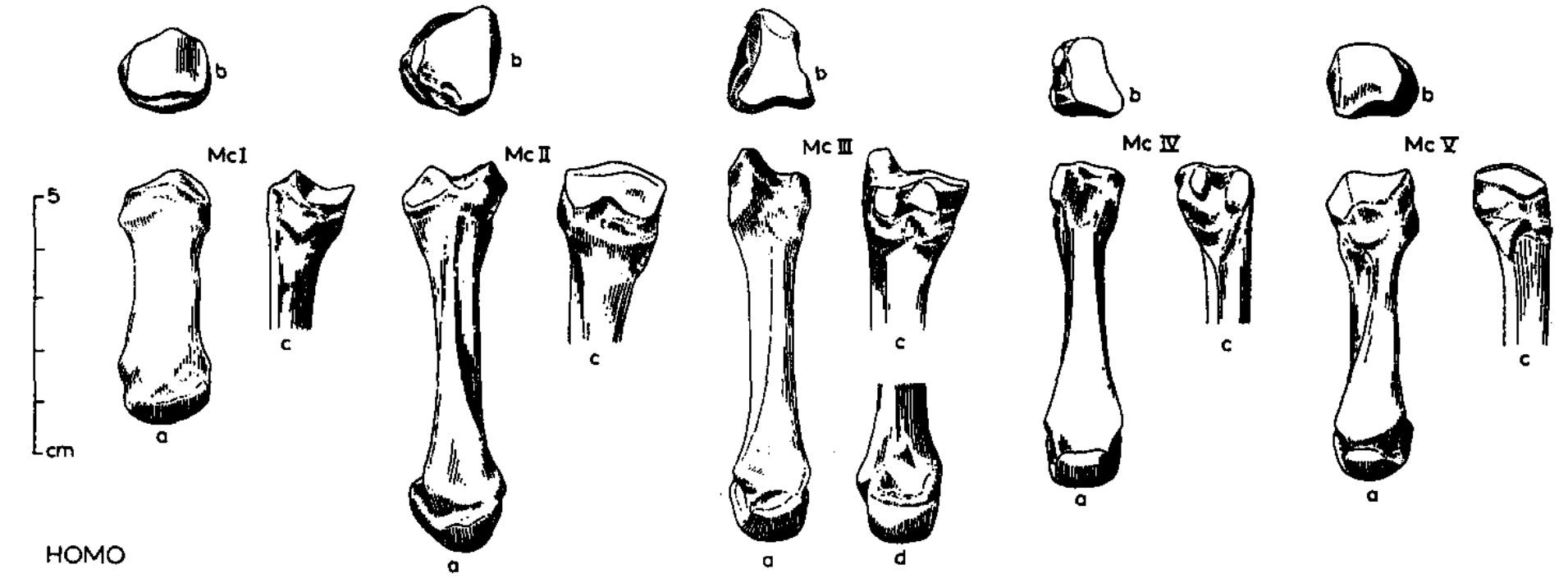
URSUS

Záprstní kosti (*metacarpalia*)



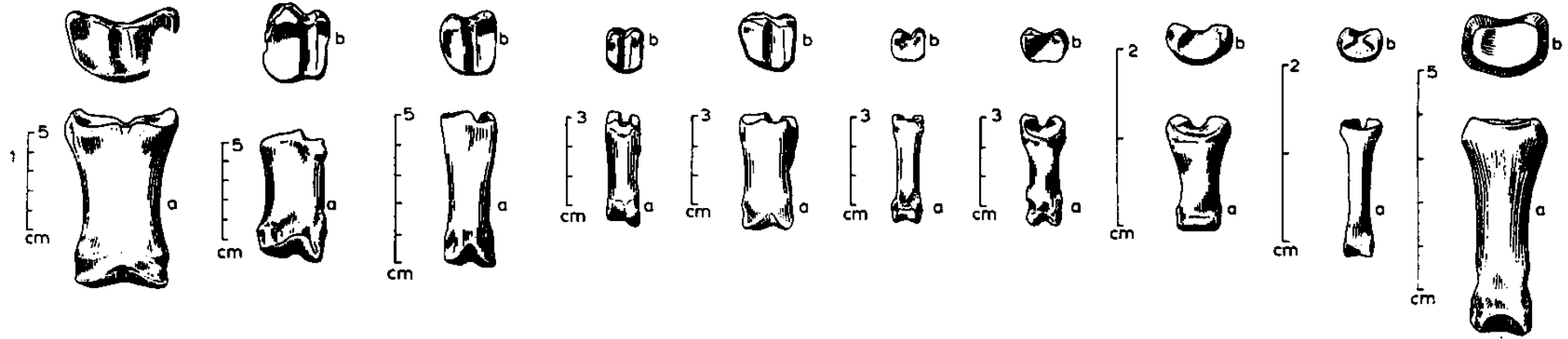
CASTOR

LEPUS



HOMO

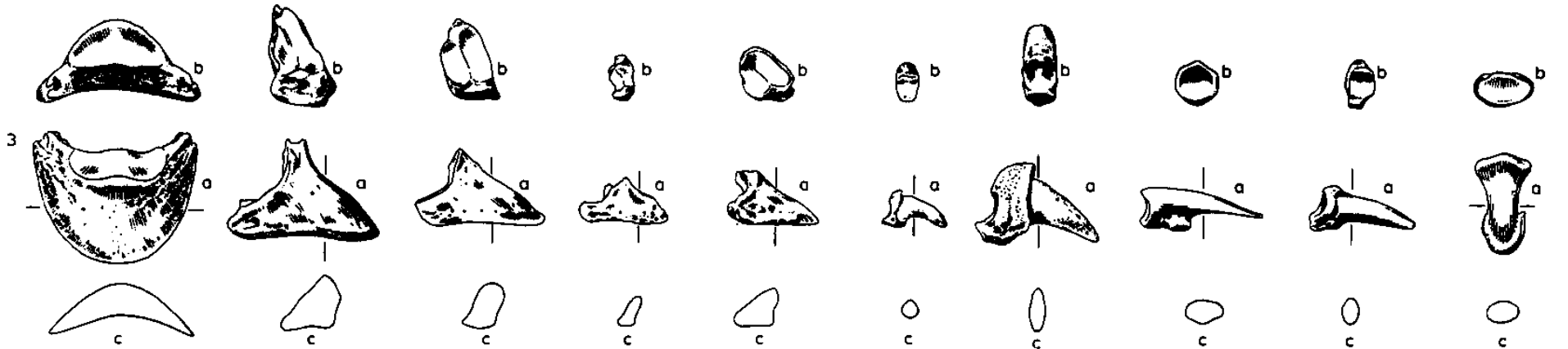
Prstní články (*phalanges*)



EQUUS BOS CERVUS OVIS SUS LUPUS URSUS CASTOR LEPUS HOMO



EQUUS BOS CERVUS OVIS SUS LUPUS URSUS CASTOR LEPUS HOMO



Děkuji za pozornost!

