

1) Identifikace modů

A handwritten musical score on two pages. The left page contains measures labeled 'a' through 'f'. The right page contains measures labeled 'g' through 'l'. The notation includes various rhythmic values and melodic lines on staves.

2) Repetitio

Handwritten musical notation illustrating the concept of 'Repetitio'. It shows a sequence of notes on a staff, followed by a series of rhythmic patterns below it. The patterns are grouped with brackets and some have circled numbers. Below this, an equation shows a sequence of notes with a flat sign (e b) followed by an equals sign and a simplified version of the same sequence.

3) Extensio modi

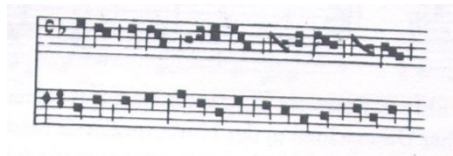


a) b) c) d)

e) – extensio uprostřed

f) – extensio uprostřed

4) Fractio modi



The image displays a musical score for guitar and piano. On the left, the guitar part is written on two staves in common time (indicated by a 'C' time signature). The right hand plays a sequence of eighth notes: G4, A4, B4, C5, B4, A4, G4. The left hand plays a sequence of eighth notes: E3, F3, G3, A3, G3, F3, E3. On the right, the piano accompaniment is written on two staves. The right hand (treble clef) plays a sequence of eighth notes: G4, A4, B4, C5, B4, A4, G4. The left hand (bass clef) plays a sequence of eighth notes: E3, F3, G3, A3, G3, F3, E3. The piano part includes a dynamic marking of 'p' (piano) at the beginning of the first measure.