

1) Identifikace modů

A handwritten musical score on two pages. The left page contains measures labeled 'a' through 'f'. The right page contains measures labeled 'g' through 'l'. The notation is complex, featuring many beamed notes and rests. The key signature has one flat (B-flat), and the time signature is 3/4. The music is written in a cursive, handwritten style.

2) Repetitio

Handwritten musical notation illustrating rhythmic repetition. The top part shows a single melodic line with eighth notes. Below it, a rhythmic pattern is shown with square notes and stems, some marked with a circled 'q'. The bottom part shows an equivalence: a sequence of notes with stems and square notes is followed by an equals sign and a simplified melodic line with stems and square notes, demonstrating how the rhythmic pattern can be represented by a simpler melodic structure.

3) Extensio modi

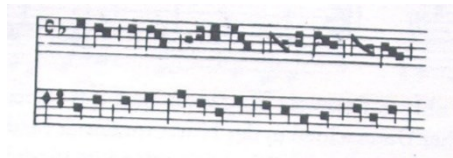


a) b) c) d)

e) – extensio uprostřed

f) – extensio uprostřed

4) Fractio modi



The image displays two systems of musical notation. The first system consists of two staves, both with a common time signature 'C'. The top staff contains a sequence of notes: a quarter note, followed by an eighth note, a quarter note, an eighth note, a quarter note, and an eighth note. The bottom staff contains a sequence of notes: a quarter note, followed by an eighth note, a quarter note, an eighth note, a quarter note, and an eighth note. The second system also consists of two staves. The top staff has a treble clef and the bottom staff has a bass clef. Both staves in the second system have a common time signature 'C'. The top staff contains a sequence of notes: a quarter note, followed by an eighth note, a quarter note, an eighth note, a quarter note, and an eighth note. The bottom staff contains a sequence of notes: a quarter note, followed by an eighth note, a quarter note, an eighth note, a quarter note, and an eighth note. A page number '8' is located below the bass staff of the second system.