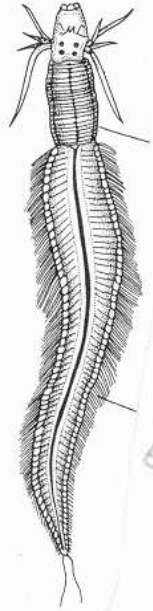
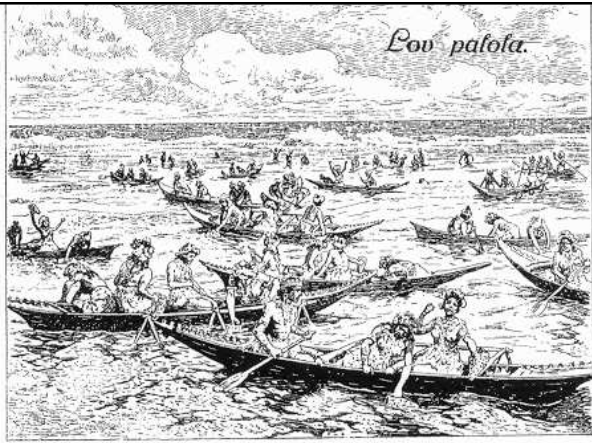
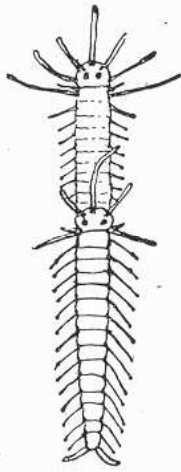
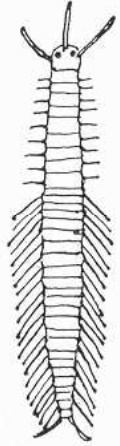


Eunice viridis

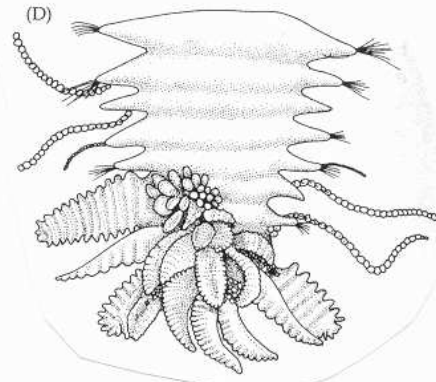
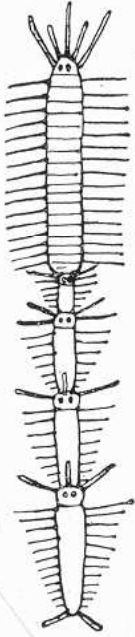
1



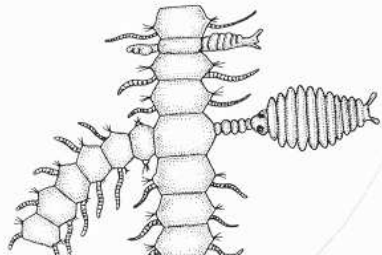
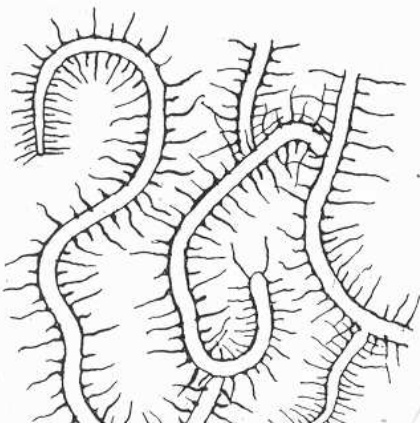
3

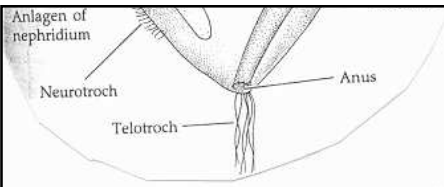


4

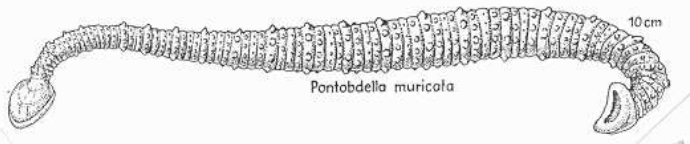
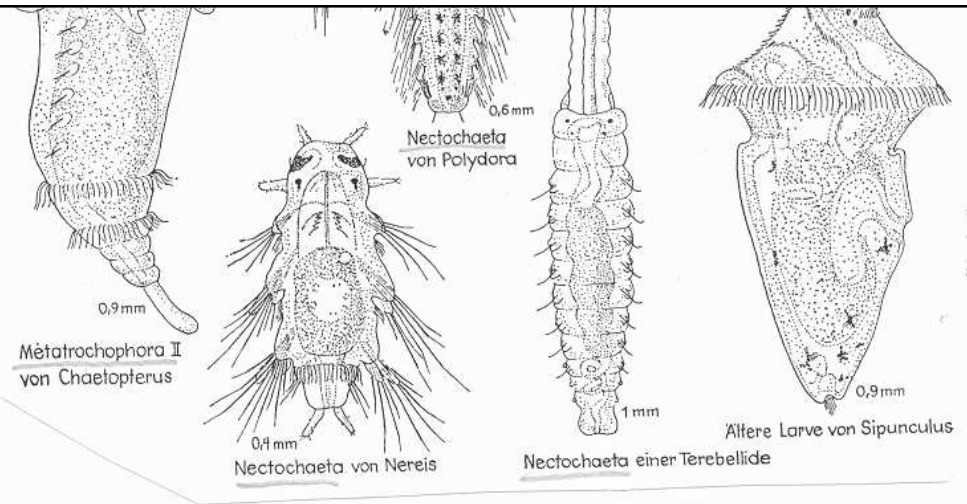


6

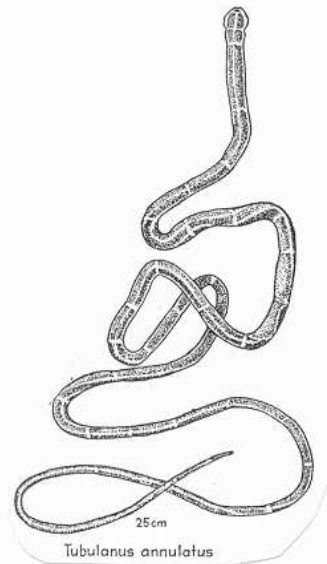




trochofora



Pontobdella muricata



Tubulanus annulatus



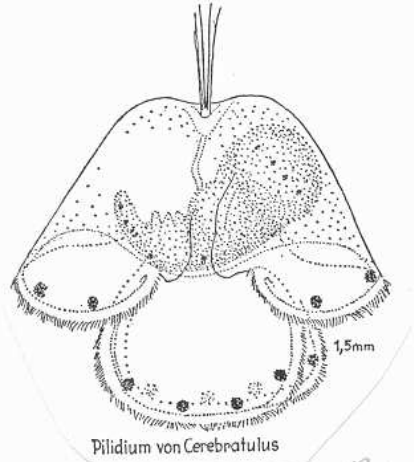
Lineus geniculatus
© Jagers M. C. M. 1999

(a)

(b)

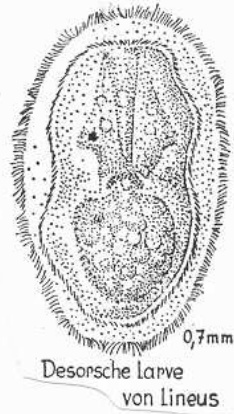
(c)

Asexual reproduction and regeneration. (a) Complete worm of *Lineus*. (b) Same individual fragmented. (c) Regeneration of same worm into miniature worms.



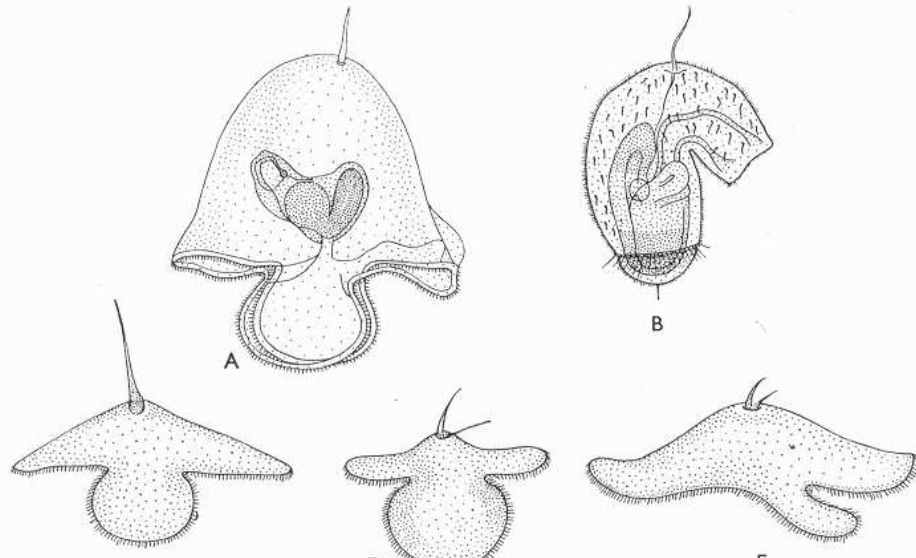
pilidium

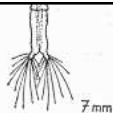
2



Desorova larva

3



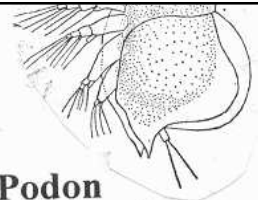


Artemia salina

1

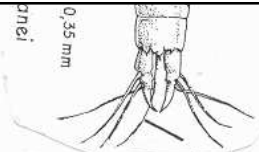
Penilia avirostris

2

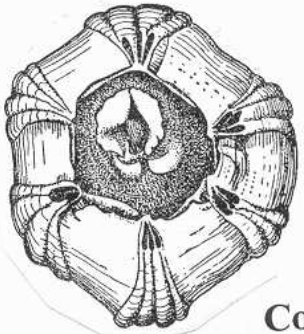


Podon

4

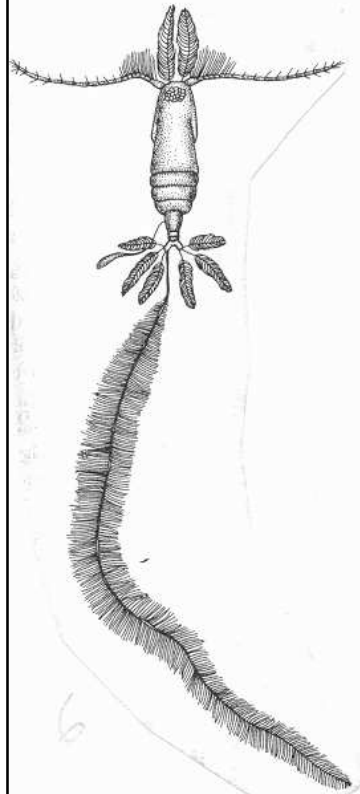


Delocheirocaris remanei

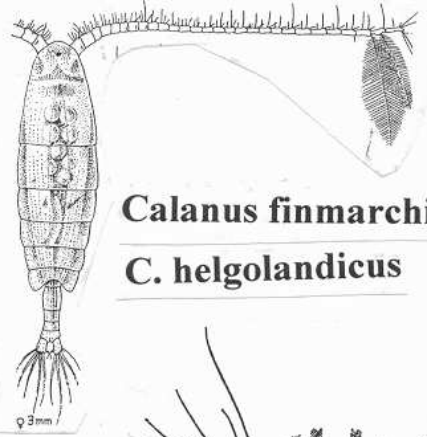


Coronula

9



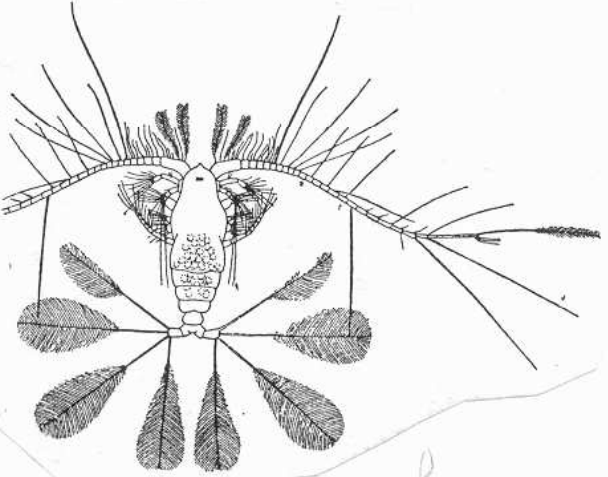
6



Calanus finmarchicus

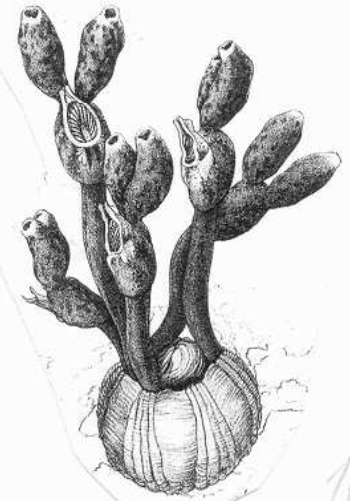
C. helgolandicus

7



Calocalanus pavo

8

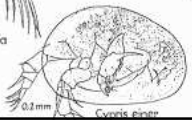


Conchoderma

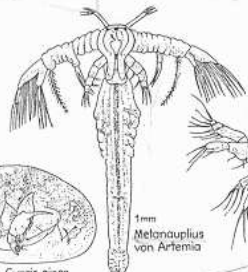
10



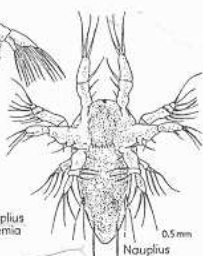
0.5mm Nauplius von Artemia



0.2mm Cypris eiper



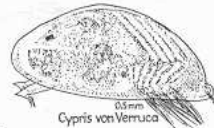
1mm Melanauplius von Artemia



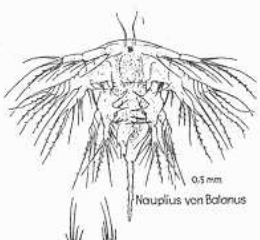
0.5mm Nauplius



0.5mm Copepodit von Euterpina



0.5mm Cypris von Verruca



0.5mm Nauplius von Batorius

Scalpellum
scalpellum

7mm
Octolasmis
lowei

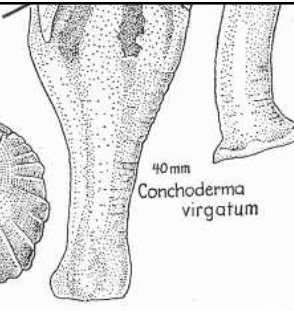


Lepas anatifera

5mm
Verruca strömia

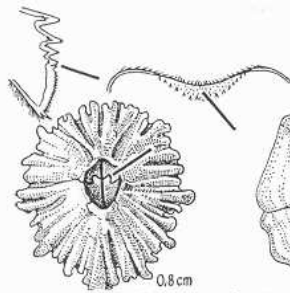


40mm
Conchoderma
virgatum



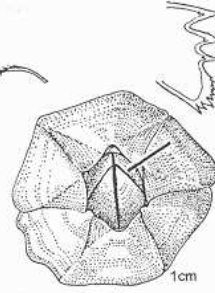
Tafel 91 Balanomorpha (Seepocken), Rhizocephala (Wurzelkrebse)

34 F

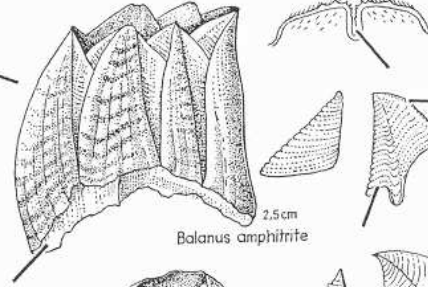


Chthamalus **Chthamalus**

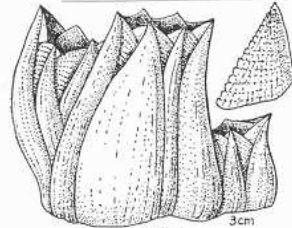
0,8 cm



stellatus depressus
1 cm



Balanus amphitrite
2,5 cm

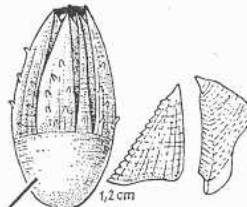


B. ebumeus
3 cm



B. tintinnabulum
2,5 cm

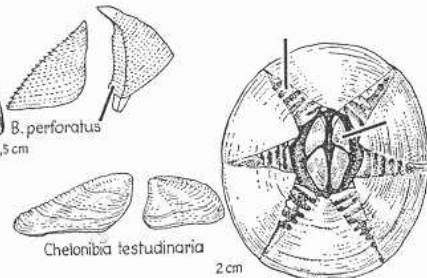
Balanus



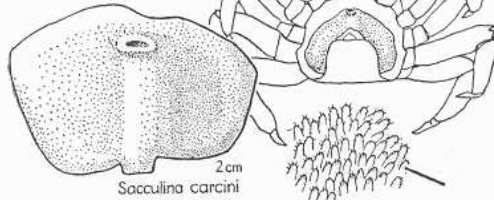
Acasta spongites
1,2 cm



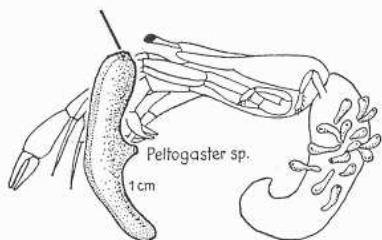
B. perforatus
2,5 cm



Chelonibia testudinaria
2 cm



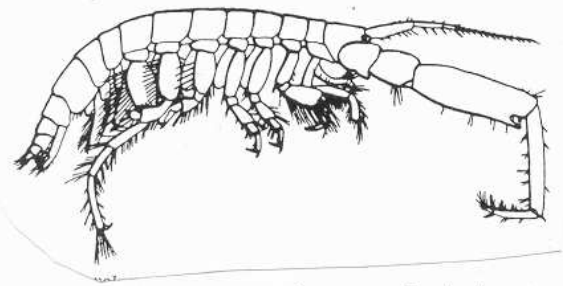
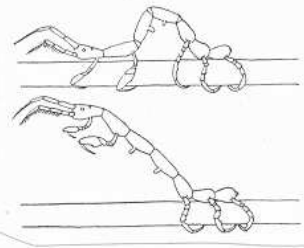
Sacculina carcini
2 cm



Peltogaster sp.
1 cm

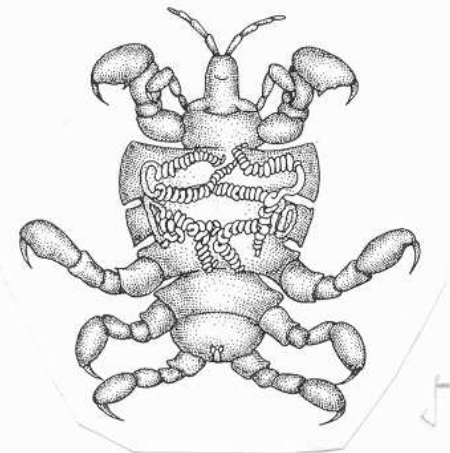
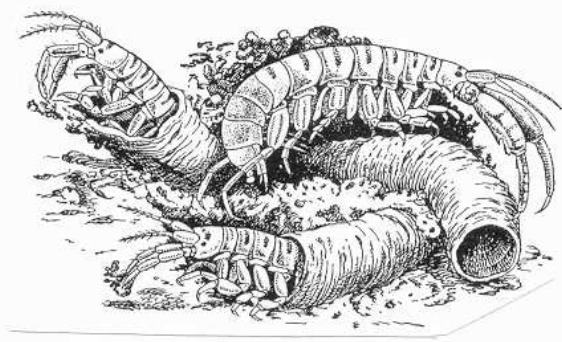
Caprella linearis

3



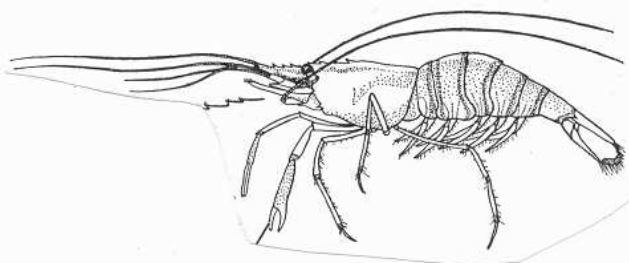
Corophium volutator

4



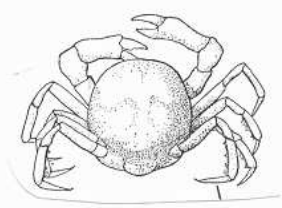
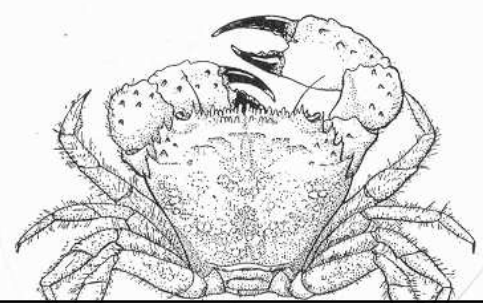
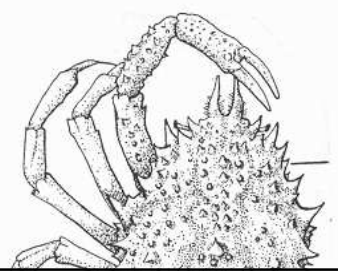
Cyanus

5

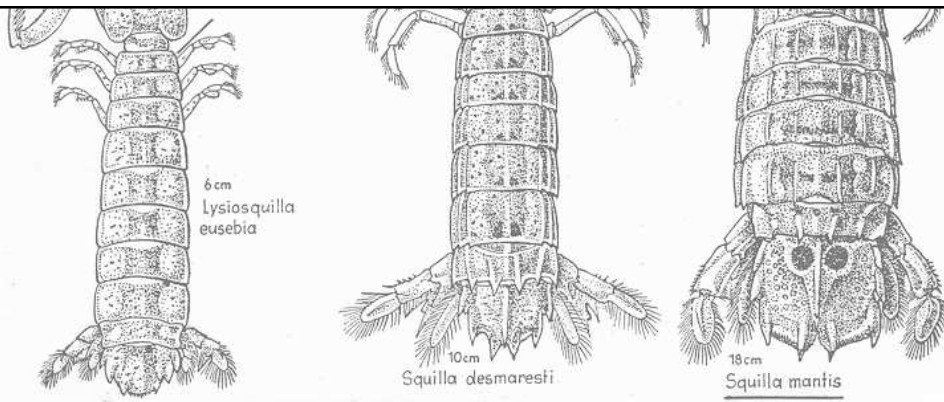


Palaemon elegans
Leander squilla

6



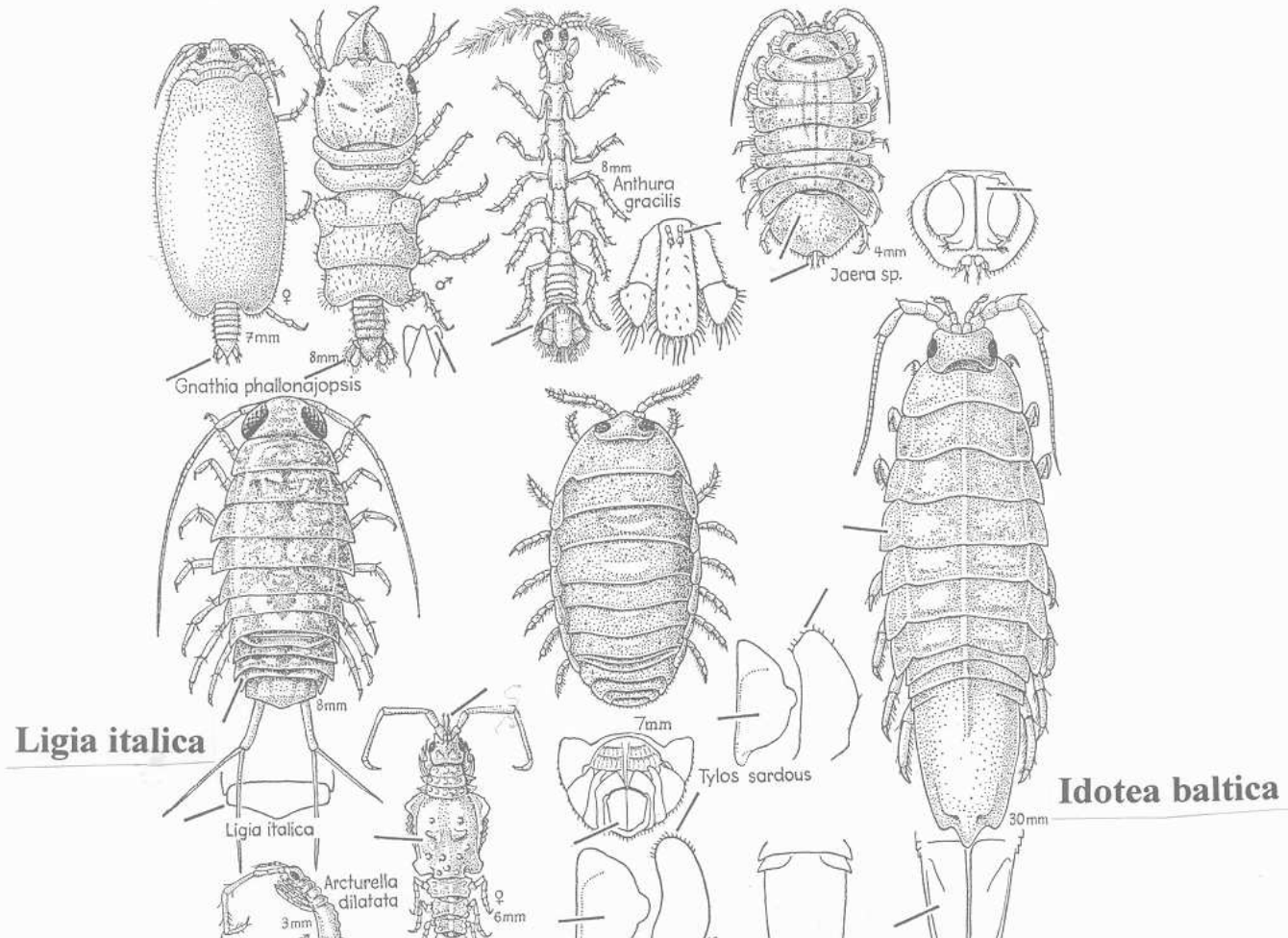
Binnotheres

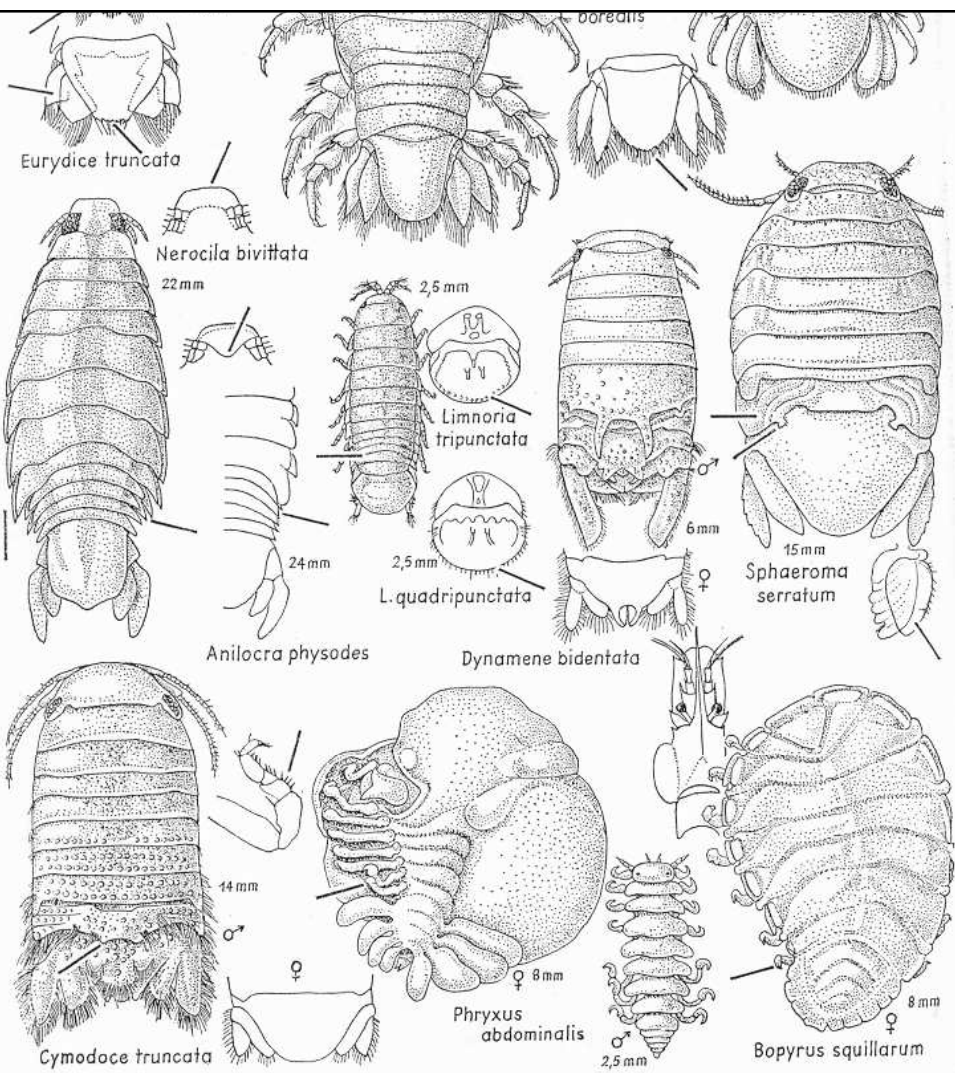


Tafel 113

Gnathiidea-Valvifera (Asseln I)

35 A





Anilocra

Nerocila

Bopyrus squillarum

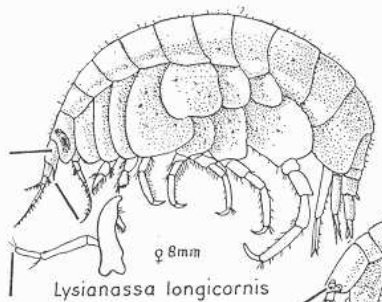
Caprella acanthifera

♀ 9 mm

Tafel 115

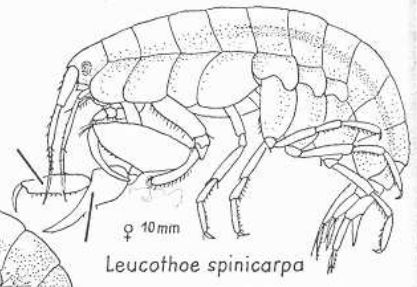
Gammaridea (Flohkrebse I)

35D



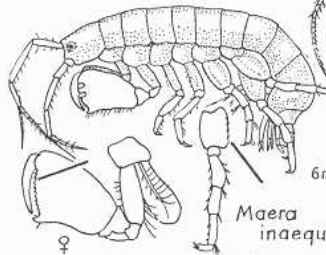
♀ 8 mm

Lysianassa longicornis



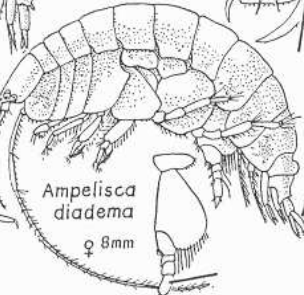
♀ 10 mm

Leucothoe spinicarpa



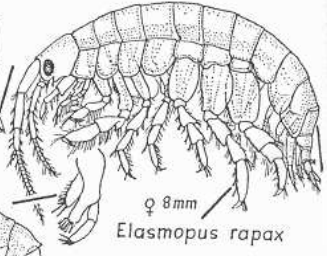
6 mm

Maera inaequipes



♀ 8 mm

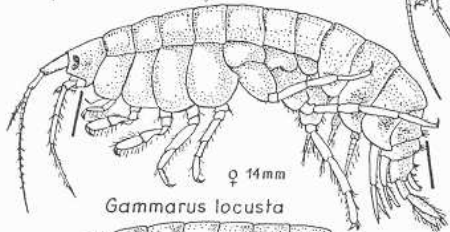
Ampelisca diadema



♀ 8 mm

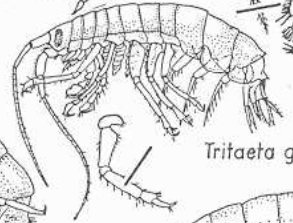
Elasmopus rapax

Gammarus locusta



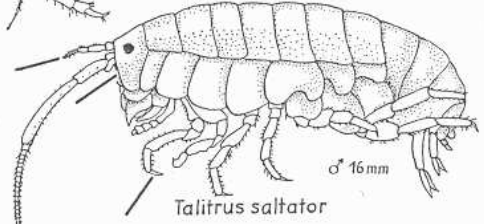
♀ 14 mm

Gammarus locusta



♂ 4 mm

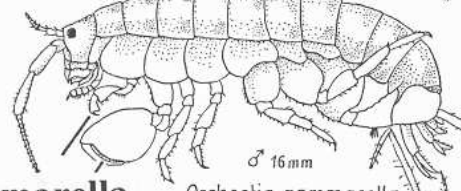
Tritaeta gibbosa



♂ 16 mm

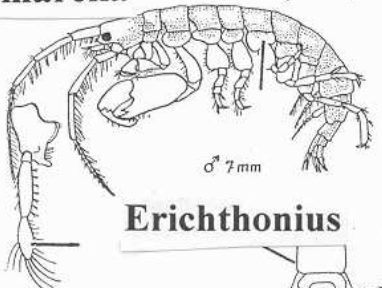
Talitrus saltator

Orchestia gammarella



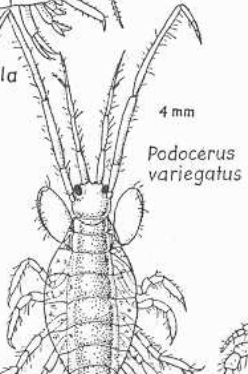
♂ 16 mm

Orchestia gammarella



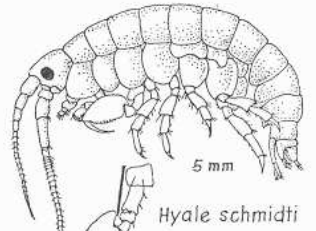
♂ 7 mm

Erichthonius



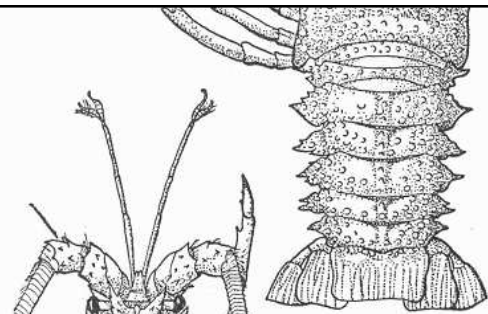
4 mm

Podocerus variegatus

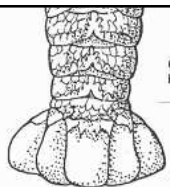


5 mm

Hyale schmidti

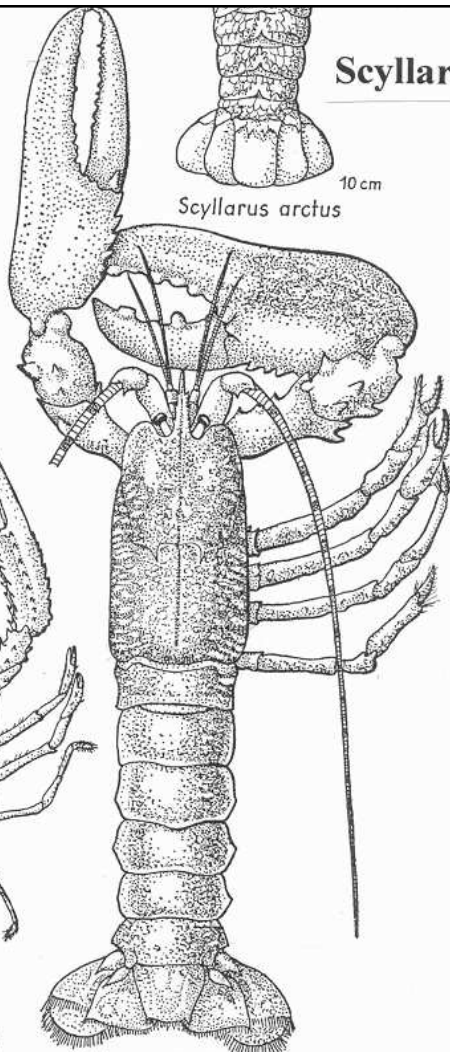


35 cm
Scyllarides latus



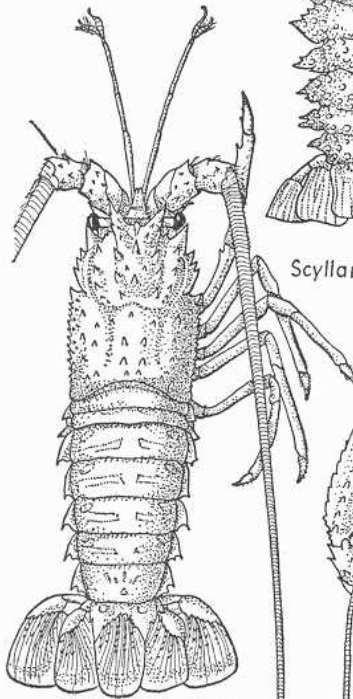
10 cm

Scyllarus arctus



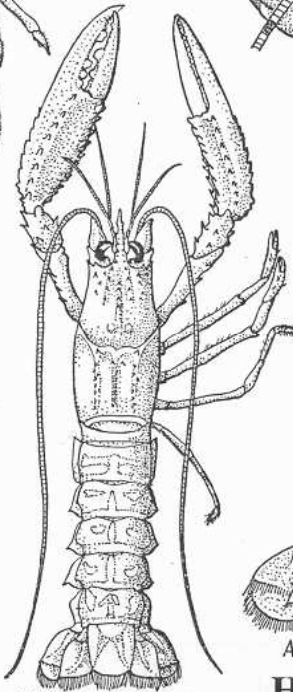
Astacus gammarus 40 cm

Homarus gammarus



30 cm

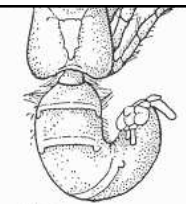
Palinurus vulgaris



15 cm

Nephrops norvegicus

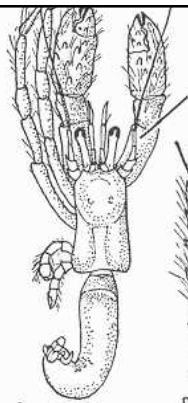
Nephrops norvegicus



4 cm
Paguristes oculatus



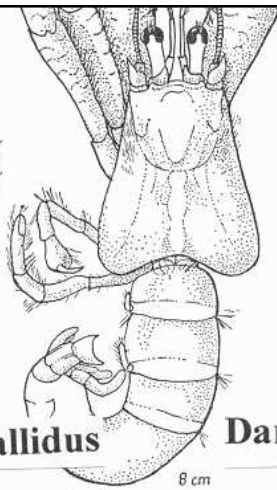
2,5 cm
Diogenes pugilator



2 cm
Clibanarius

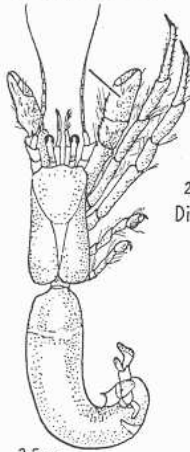


8 cm
P. calidus



Dardanus arrosor

8 cm
Pagurus arrosor



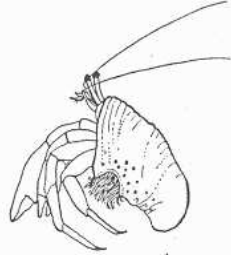
2,5 cm
Eupagurus anachoretus



2,5 cm
E. cuanensis



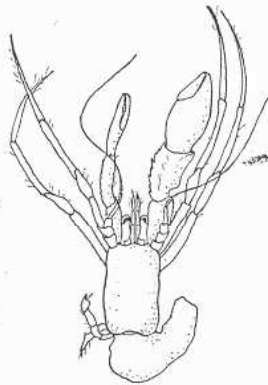
4 cm
E. excavatus



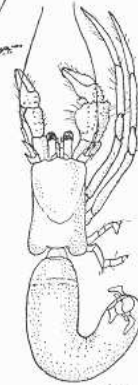
4 cm
Eupagurus prideauxi



1,5 cm
E. sculptimanus

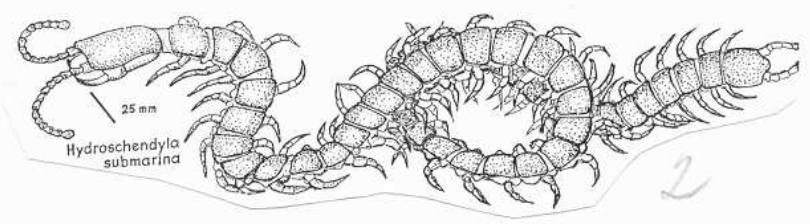
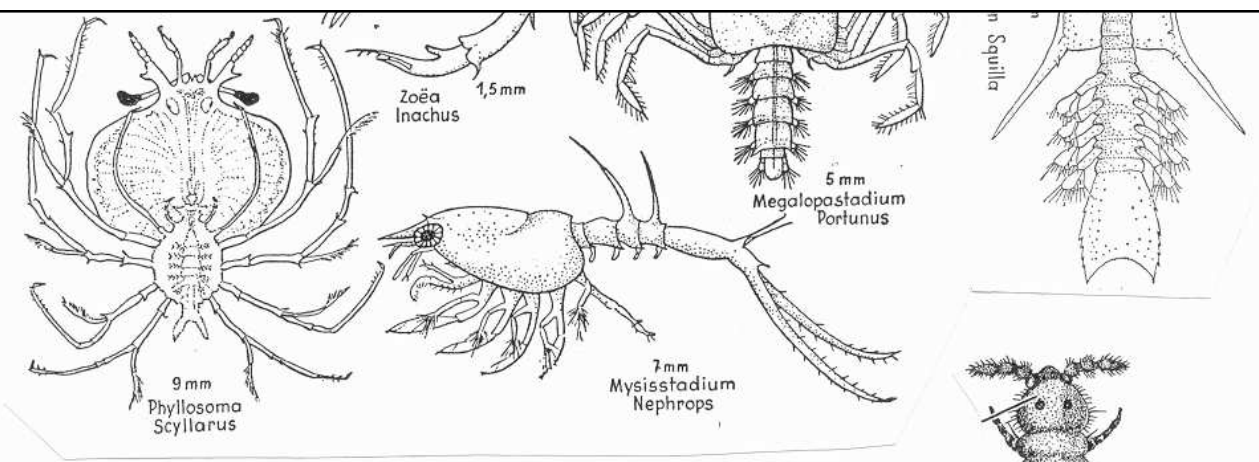


1 cm
Anapagurus laevis

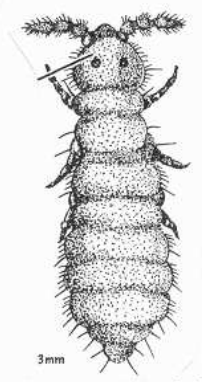


1 cm
Catapaguroides timidus

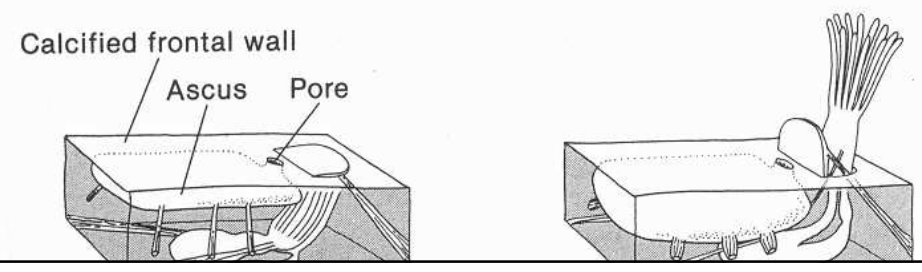
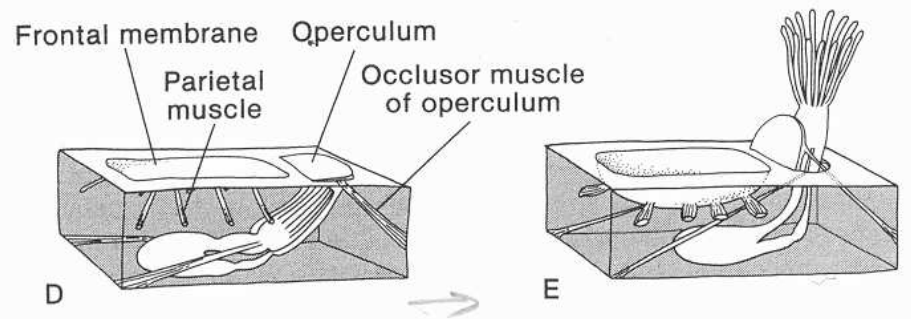
Eupagurus prideauxi



Hydroschendyla submarina

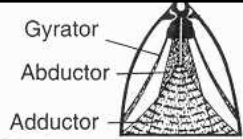
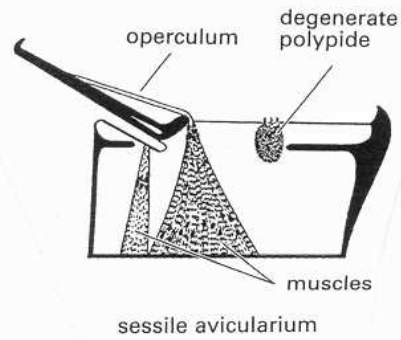


Anurida maritima

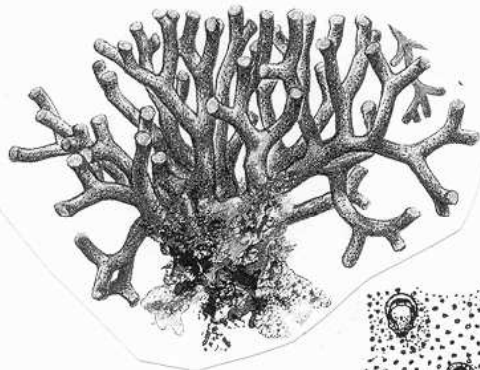
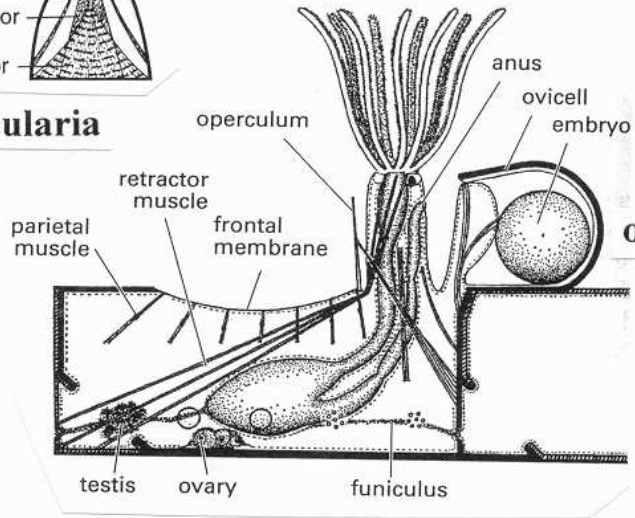


membrane

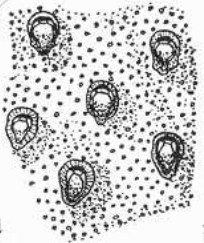
avicularia



vibracularia

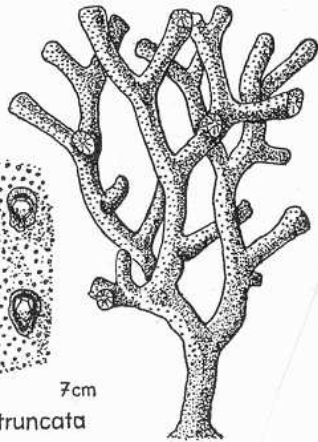


5



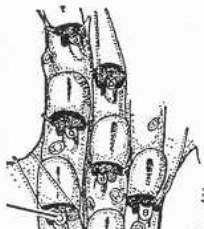
7cm

Myriapora truncata

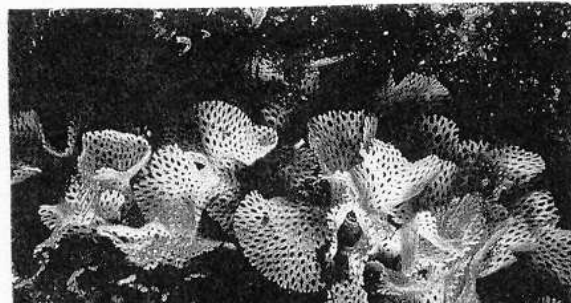
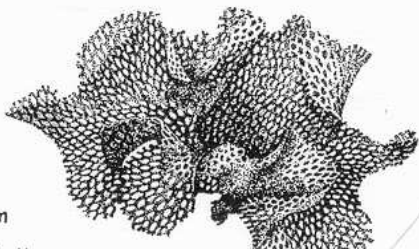


6

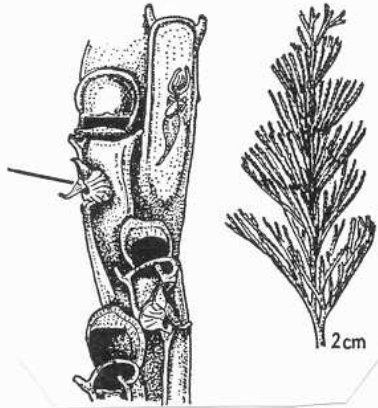
Pentapora fasciata



3 cm

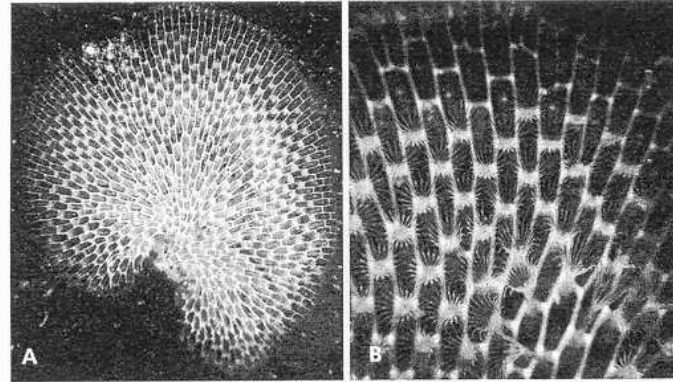


Crisia eburnea



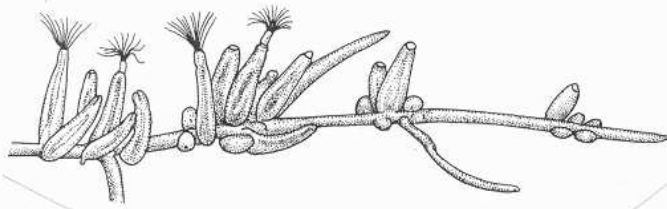
Bugula avicularia

3



Membranipora membranacea

4

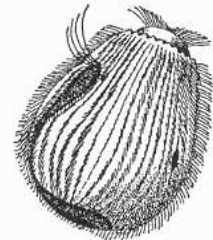


Bowerbankia imbricata

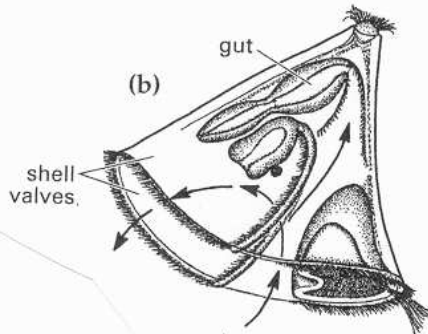
5



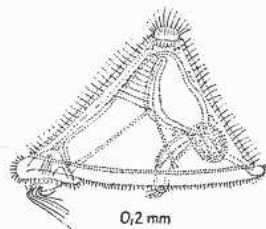
Larve von Bugula



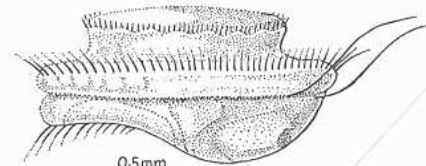
Coronate larva



cyphogaster larve



Cyphogaster von Membranipora

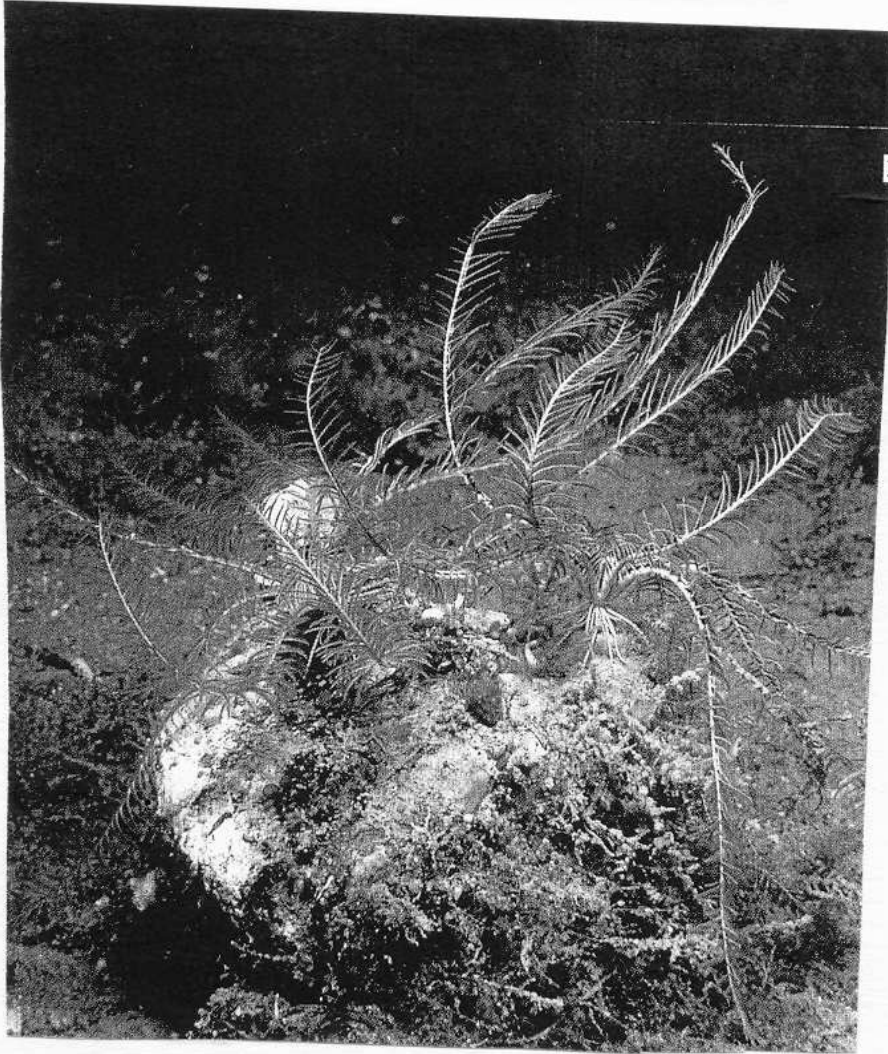


Larve von Alcyonidium

7



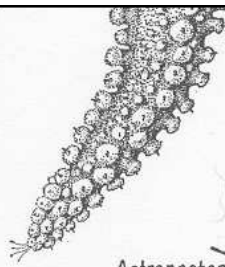
Antedon mediterranea



Marthasterias glacialis



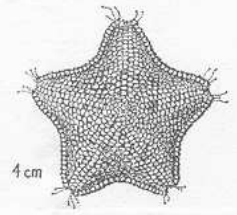
40 cm
Brisinga coronata



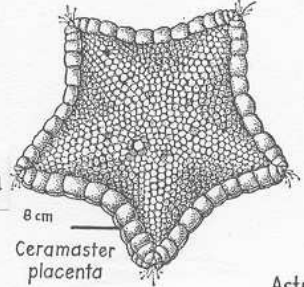
Marthasterias glacialis



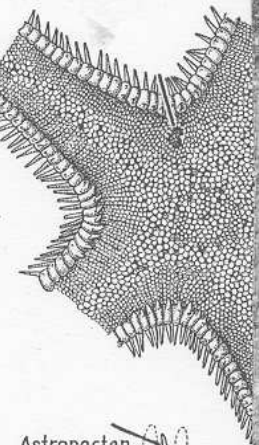
30 cm
Astropecten aurantiacus



4 cm
Asterina gibbosa



8 cm
Ceramaster placenta



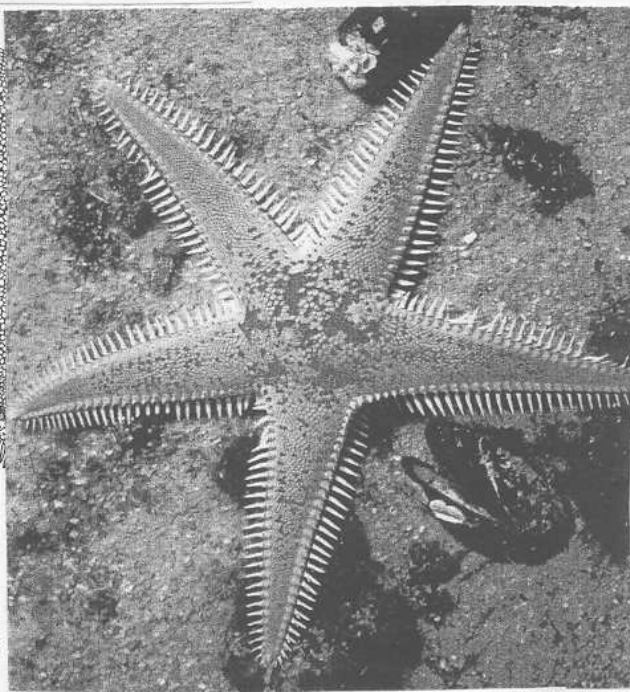
Astropecten spinulosus
7 cm



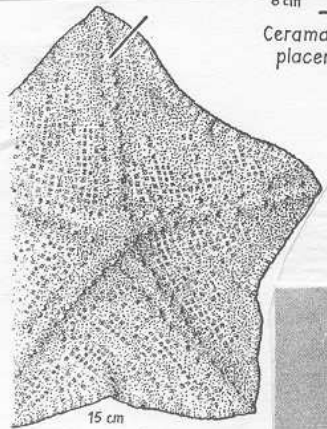
8 cm
Astropecten bispinosus



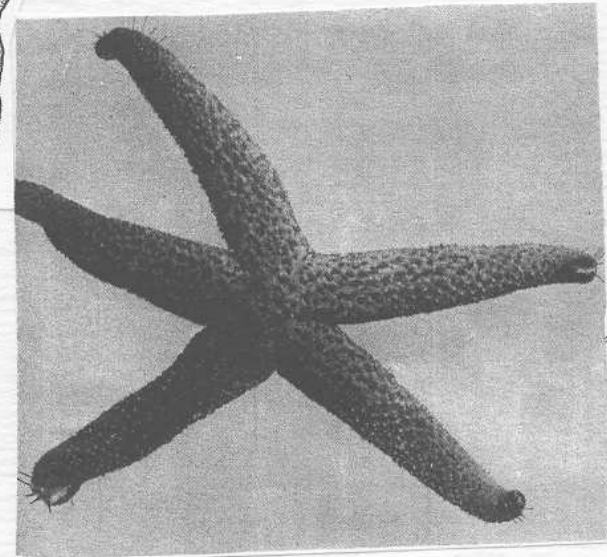
Astropecten irregularis



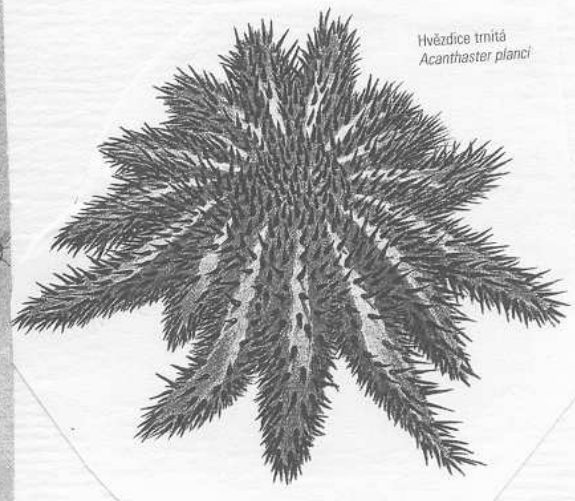
Astropecten aurantiacus



15 cm
Anseropoda placenta



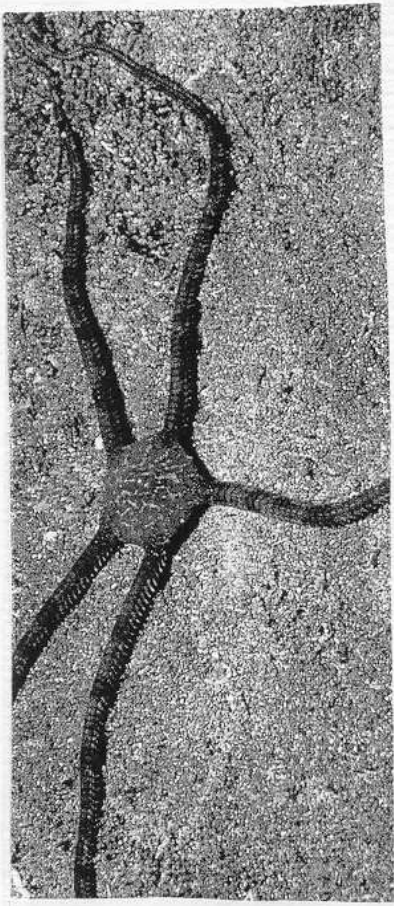
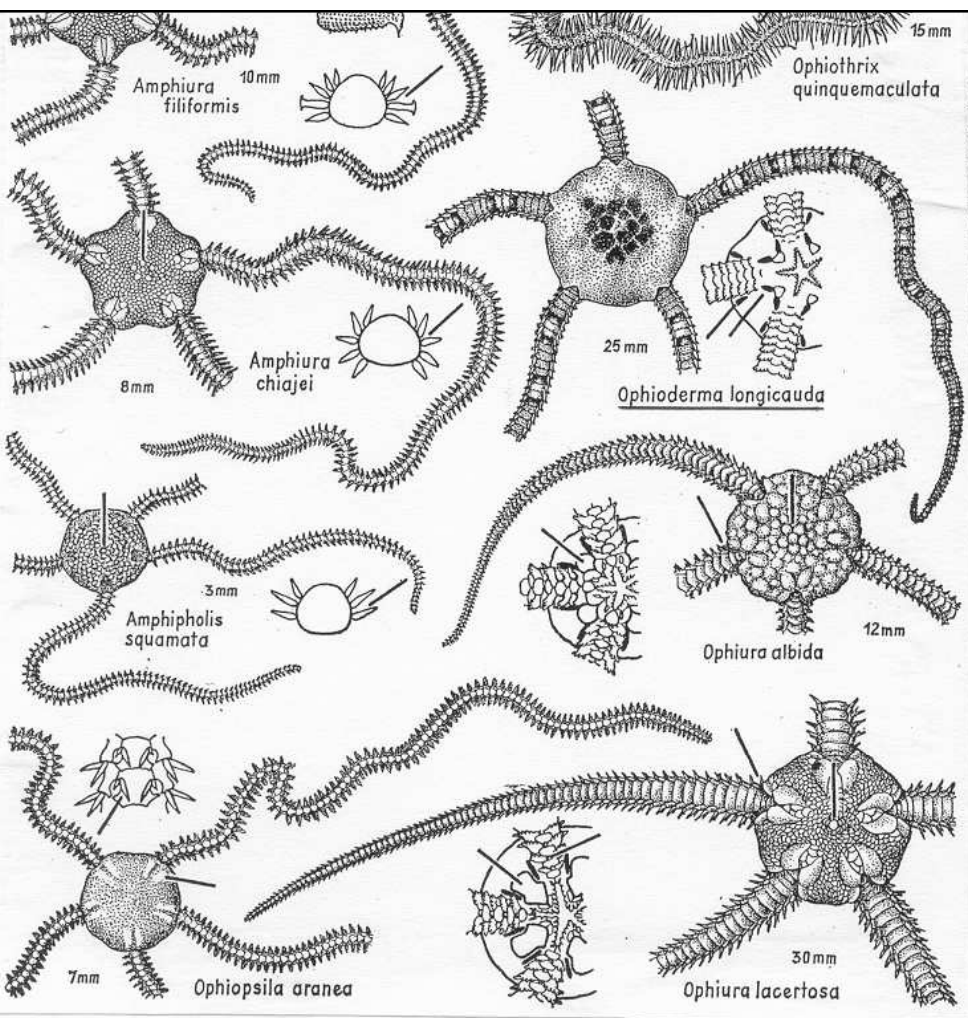
Echinaster sepositus



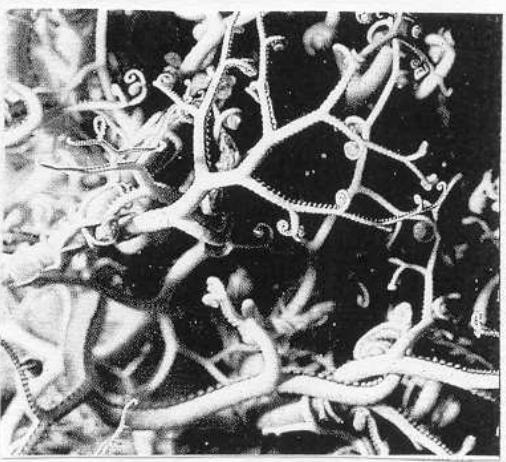
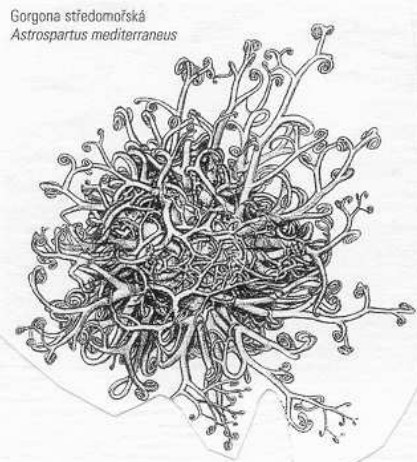
Hvězdice trnitá
Acanthaster planci

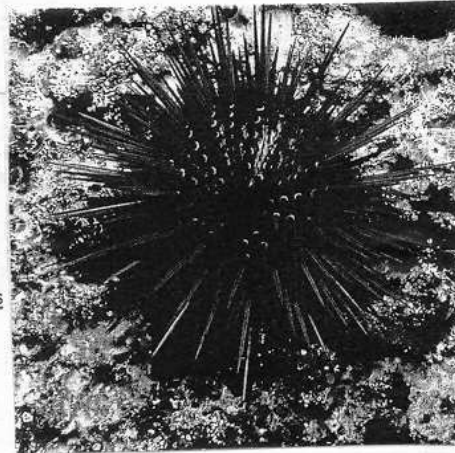
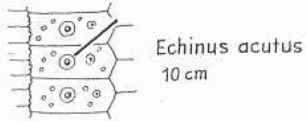
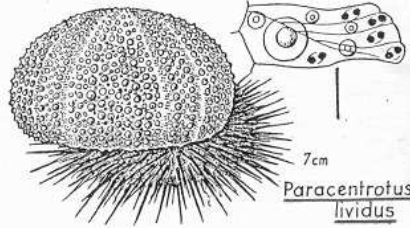
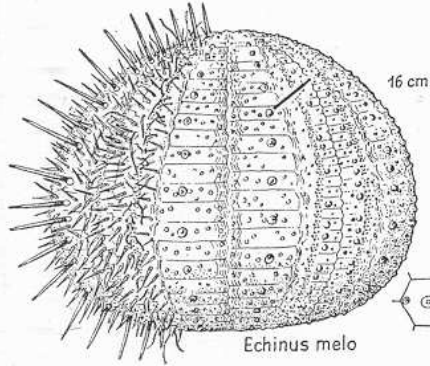
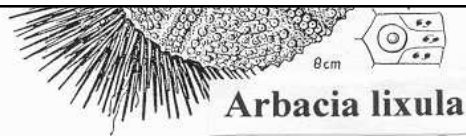
Acanthaster planci

Ophiotrix fragilis

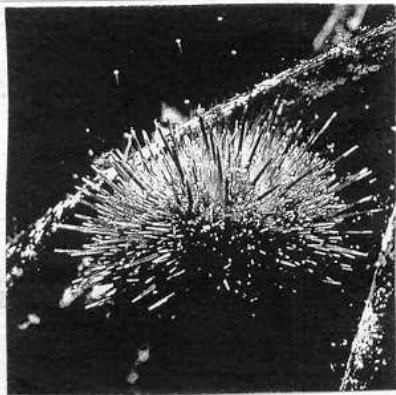
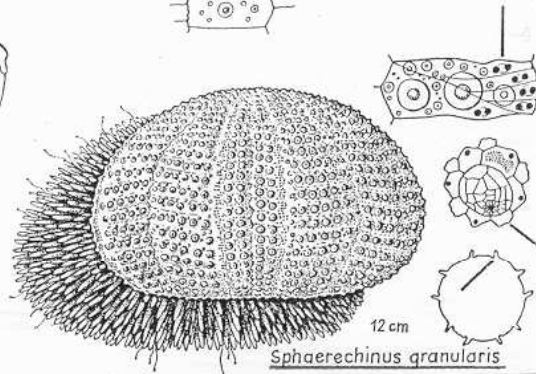
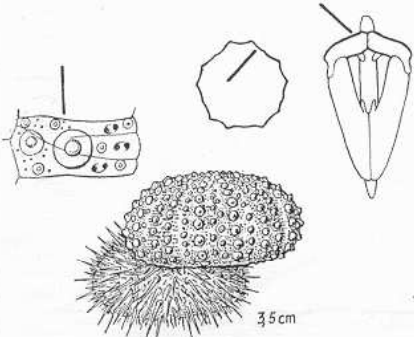


Ophioderma longicauda

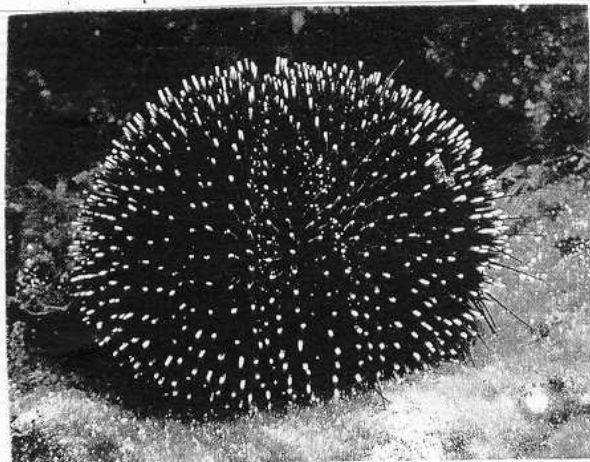




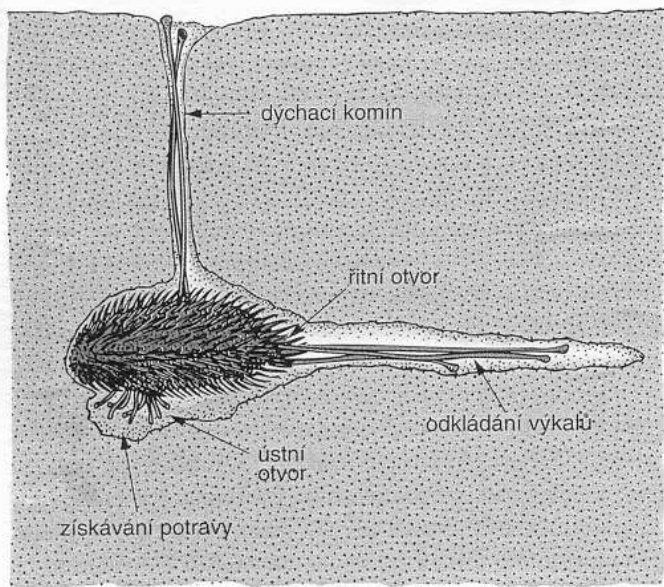
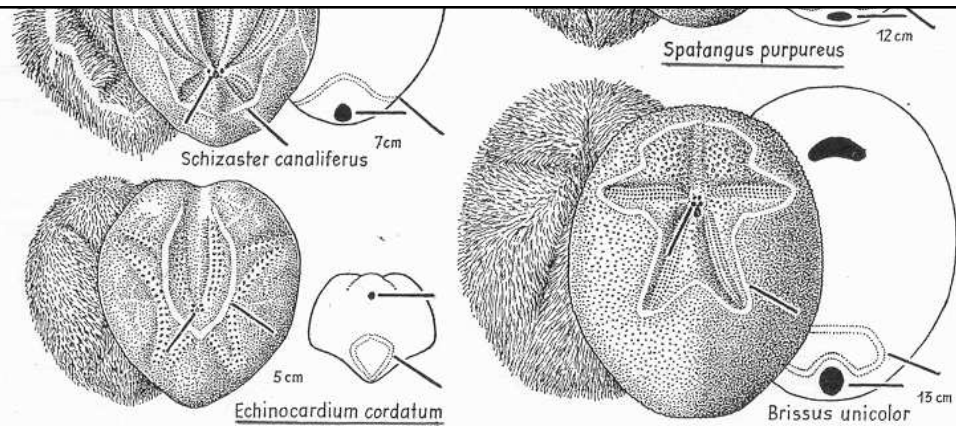
Paracentrotus lividus



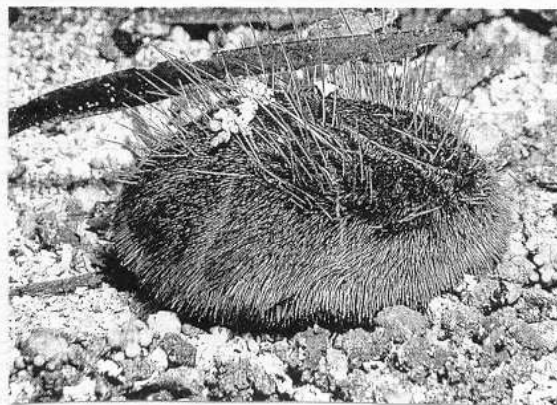
Psammechinus microtuberculatus



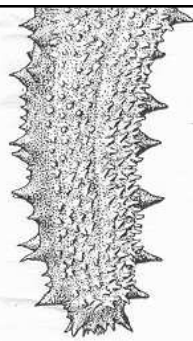
Sphaerechinus granularis



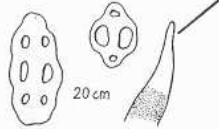
Echinocardium cordatum



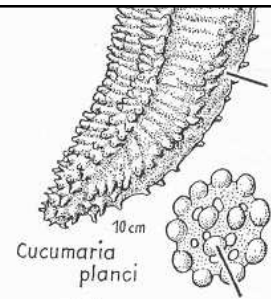
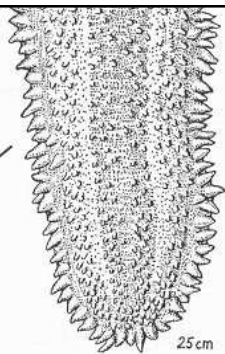
Spatangus purpureus



H. forskali

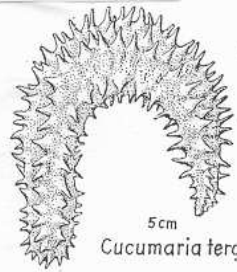


H. polii



Cucumaria planci

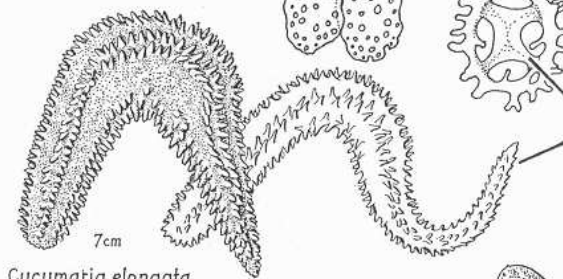
Holothuria tubulosa



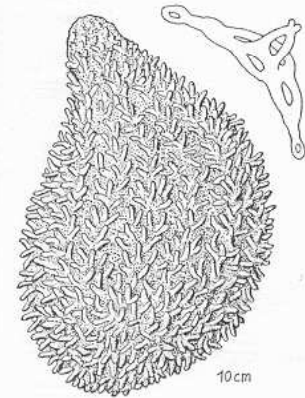
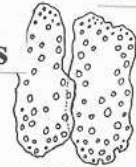
Cucumaria tergestina



Stichopus regalis



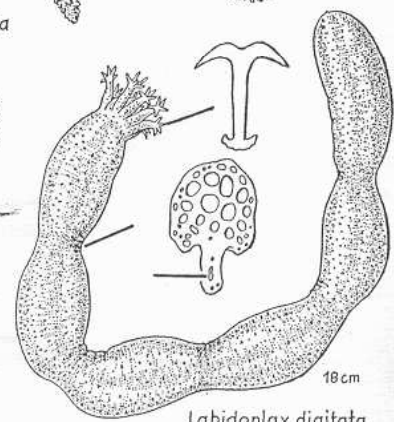
Cucumatia elongata



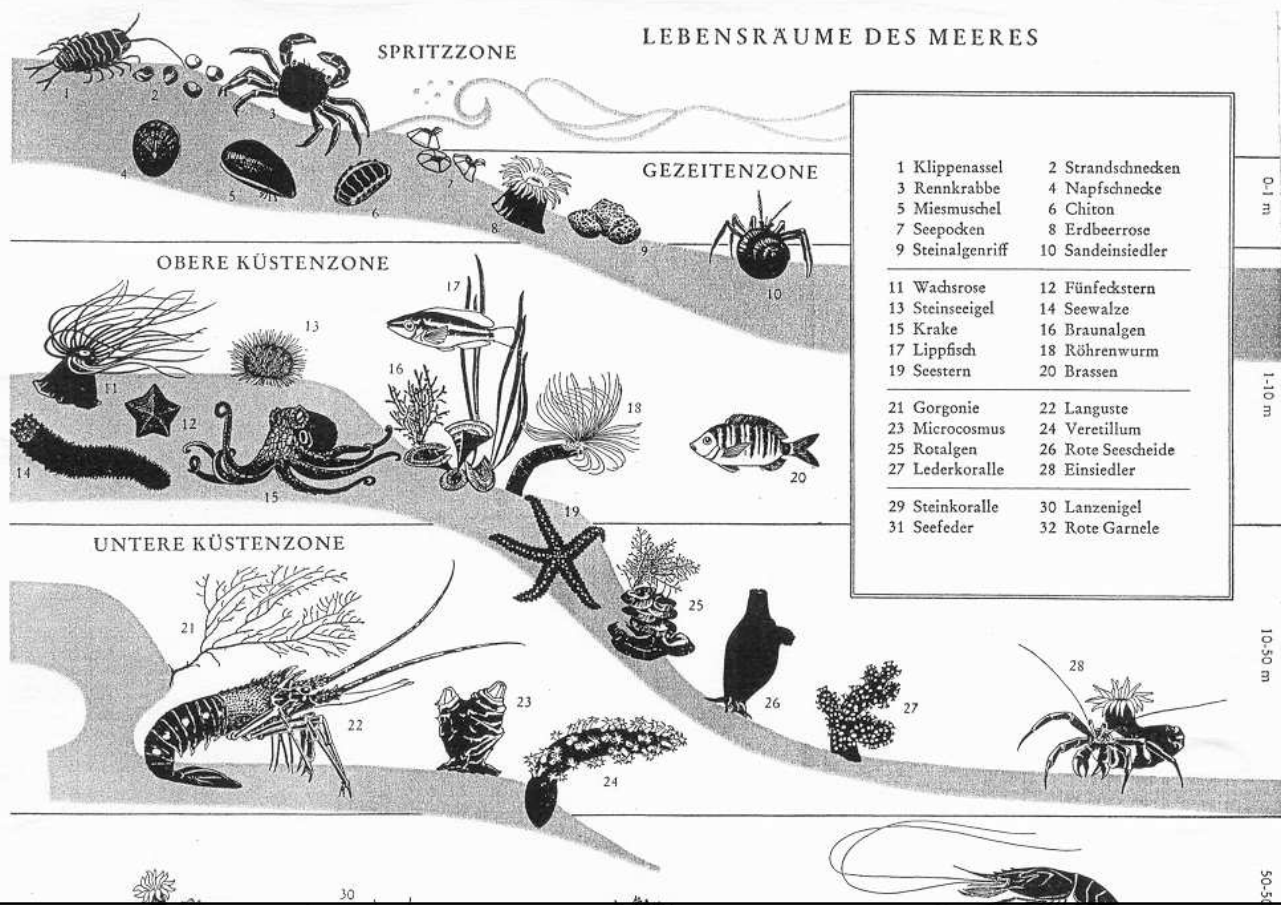
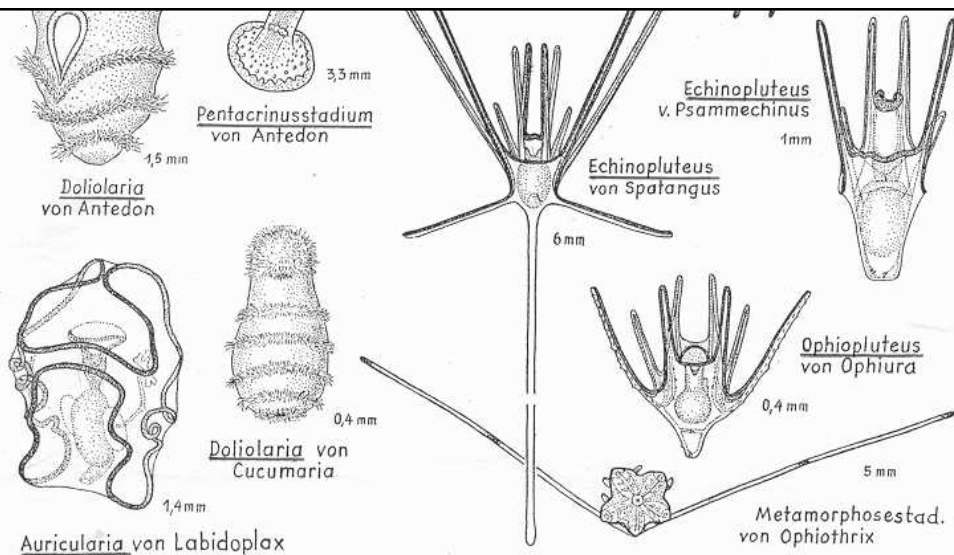
Thyone fusus



Phyllophorus urna



Labidoplax digitata



1. příbojová zóna
(supralitorál)

2. přílivová zóna
(mediolitorál)

3. osvětlená šelfová zóna
(infralitorál)

4. zastíněná zóna (cirkalitorál)

Zóny skalnatých pobřeží Středozemního moře

„trottoir“

chaluhy

zelené řasy

„mořská tráva“

bílé
rohovitky

žluté
rohovitky

červené
rohovitky

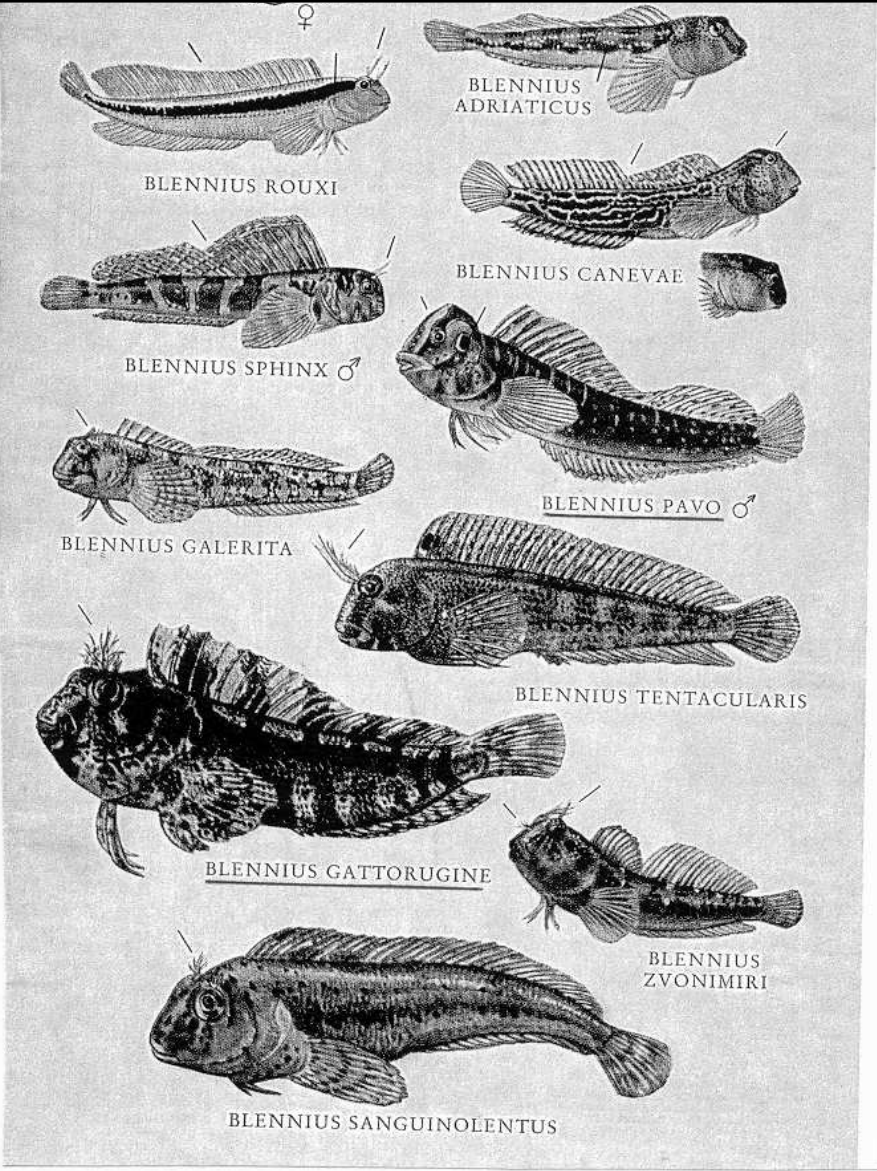
korál červený

jeskyně

pobřežní detrit
se sasankou

střední hladina vody

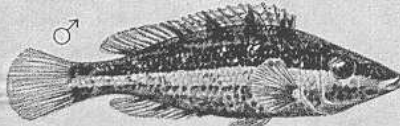




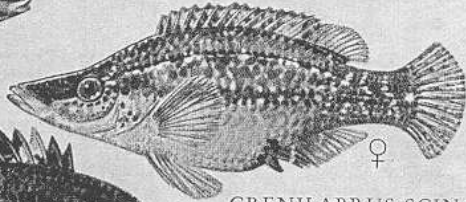
CINEREUS



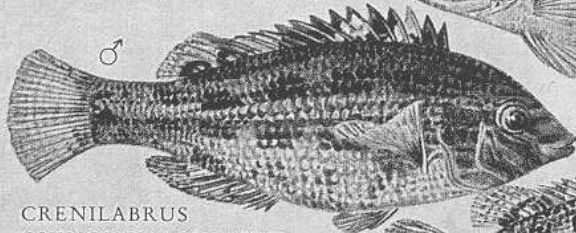
CRENILABRUS OCELLATUS



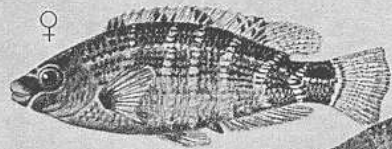
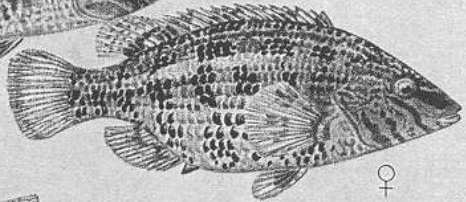
CRENILABRUS DOEDERLEINI



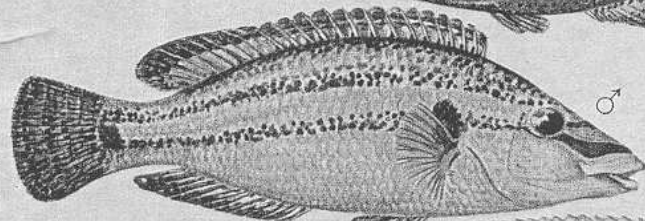
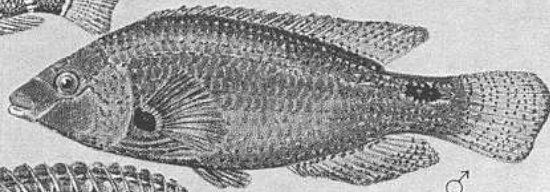
CRENILABRUS SCINA



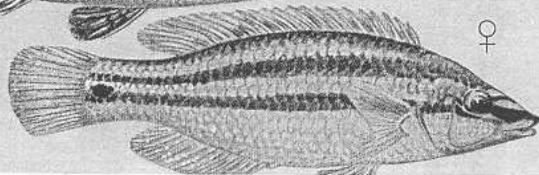
CRENILABRUS
QUINQUEMACULATUS

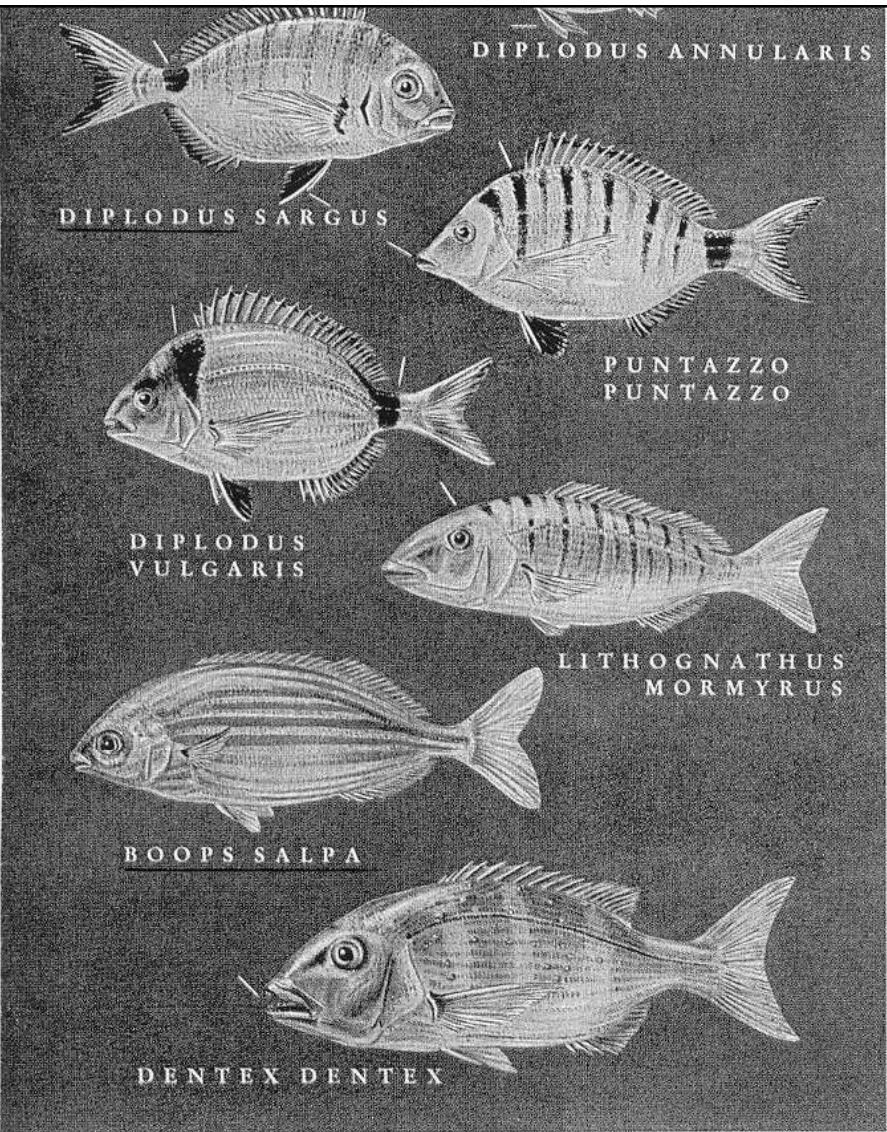


CRENILABRUS
MEDITERRANEUS



CRENILABRUS TINCA





DIPLODUS ANNULARIS

DIPLODUS SARGUS

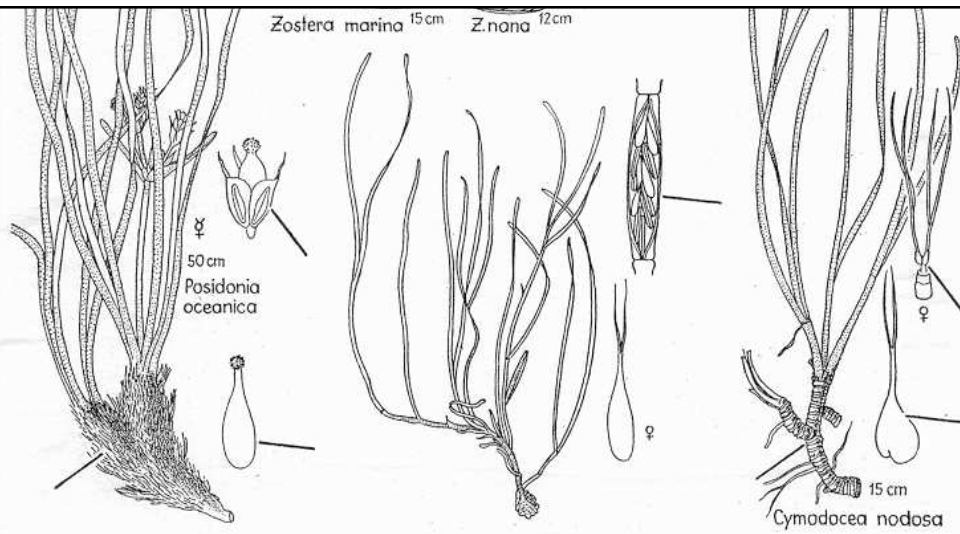
PUNTAZZO
PUNTAZZO

DIPLODUS
VULGARIS

LITHOGNATHUS
MORMYRUS

BOOPS SALPA

DENTEX DENTEX



Posidonia oceanica

Zostera

Cymodocea

