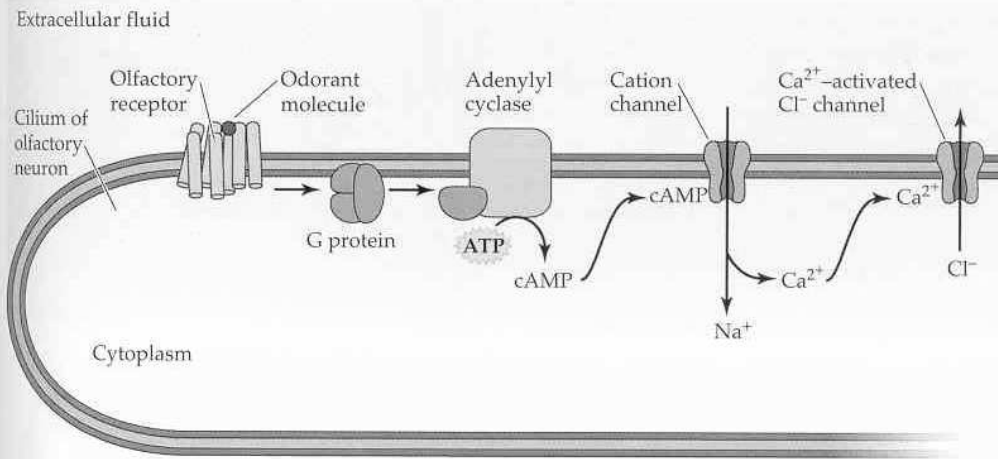


(a) Increase in cAMP



(b) Increase in IP₃

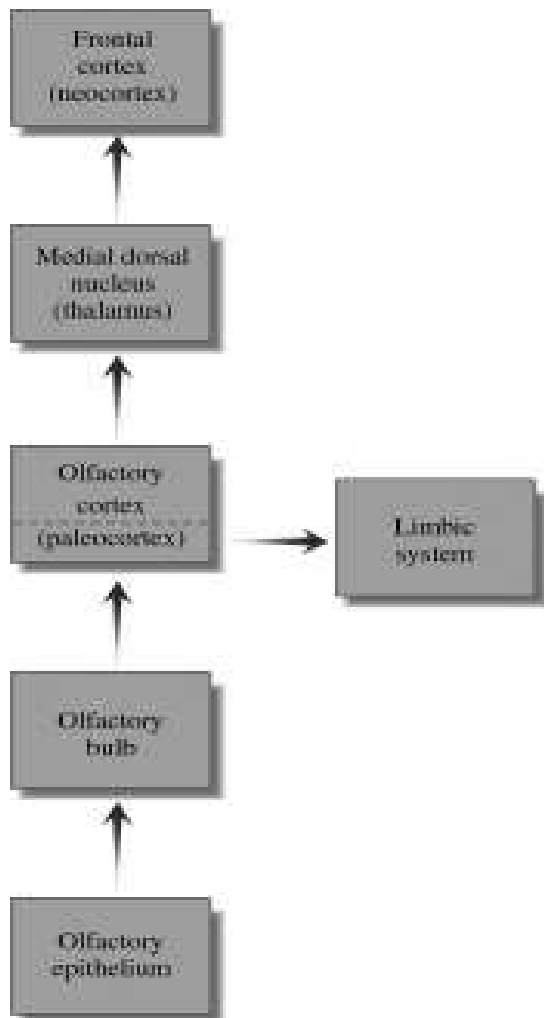
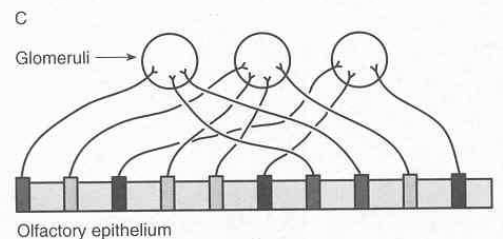
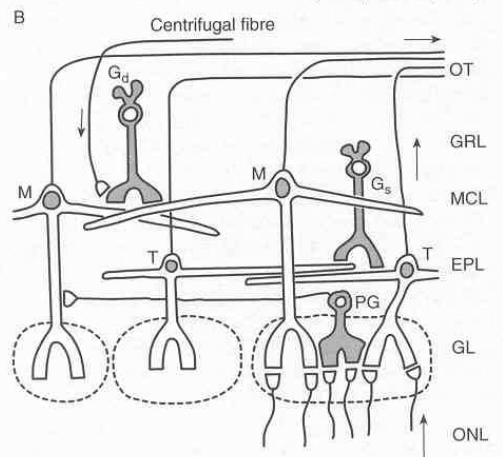
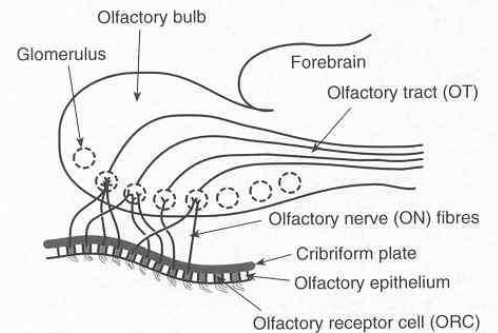
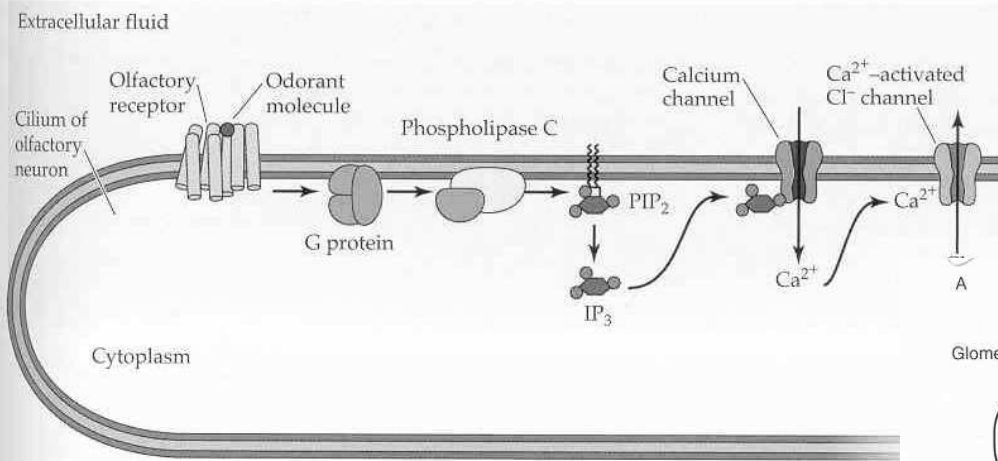


Figure 13.7 Olfactory bulb. (a) The figure shows olfactory axons passing through the cribriform plate to end in glomeruli in the olfactory bulb. (b) Basic circuit of the mammalian olfactory bulb. Layers: EPL = external plexiform layer; GL = glomerular layer; GRL = granule cell layer; OT = olfactory tract; MCL = mitral cell layer. Cells: G_d = deep granule cell; G_s = superficial granule cell; M = mitral cell; PG = periglomerular cell; T = tufted cell. Inhibitory cells stippled. Simplified from

