

Abb. 210: Nesselkapseltypen. A Spirocyste. B-I Nematocysten. B Rhopalomenen. C Desmonemen. D Haplonemen (Isorhizen). E Haplonemen (Anisorhizen). F Heteronemen (Rhabdoiden). G Heteronemen (eurytele Rhopaloiden). H Heteronemen (stenotele Rhopaloiden). I Heteronemen (Birhopaloiden). Nach verschiedenen Autoren aus Siewing (1985).

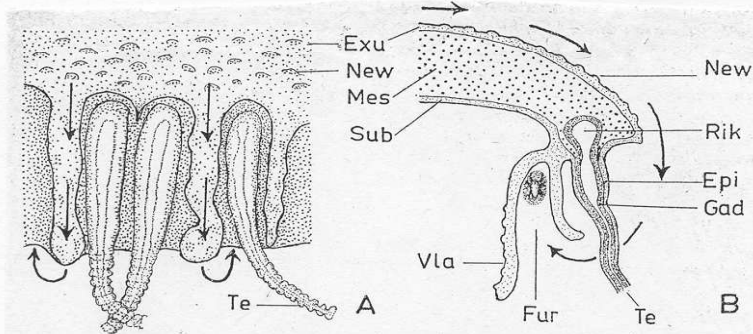
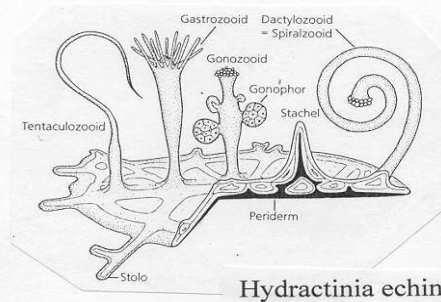
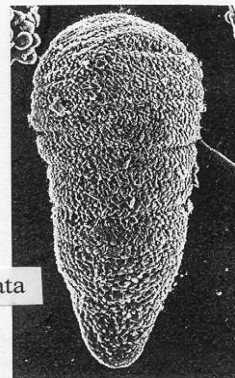


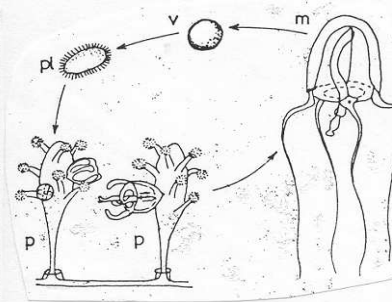
Abb. 51. *Aurelia aurita*, Schirmrand (vgl. Abb. 56). A. Aufsicht auf die Außenseite mit Exumbrella. Die Tentakel setzen in Gruben zwischen lappenartigen Vorsprüngen des Schirmrandes an. Beachte die Nesselwarzen der Exumbrella. B. Längsschnitt zur Darstellung der Randstrukturen und des Nahrungserwerbs. Die Pfeile kennzeichnen die Richtung des Geißelstromes, der die in Schleim gehüllten Nahrungspartikel von der Exumbrella über den Schirmrand hinweg in die subumbrellare Futterrinne befördert. — Epi Epidermis, Exu Exumbrella, Fur Futterrinne, Gad Gastrodermis, Mes Mesogloea, New Nesselwarze, Rik Ringkanal, Sub Subumbrella, Te Tentakel, Vla Velarium.



Hydractinia echinata



plasmula



Coryne tubulosa

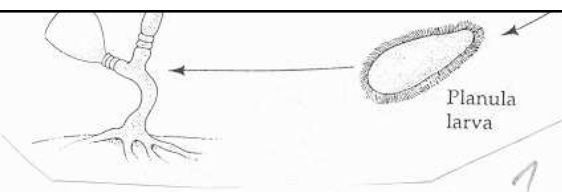
15

1

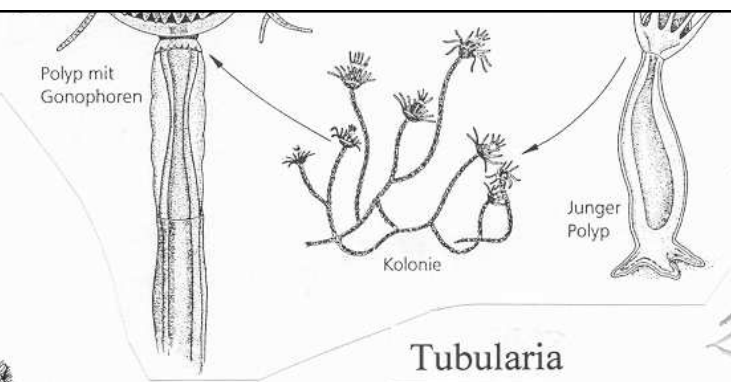
2

3

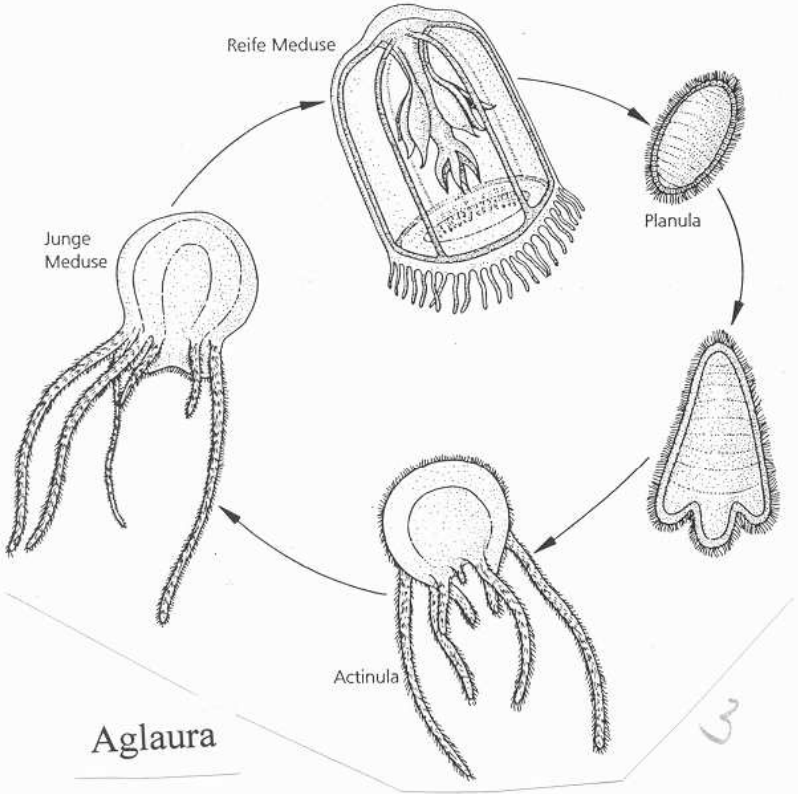
4



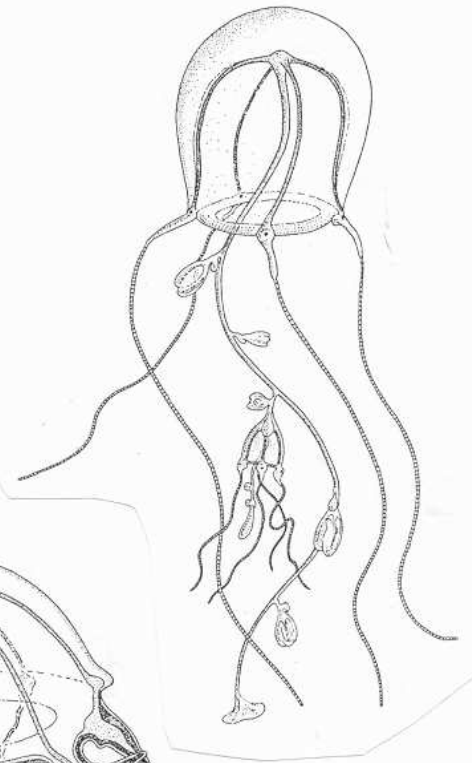
Obelia geniculata



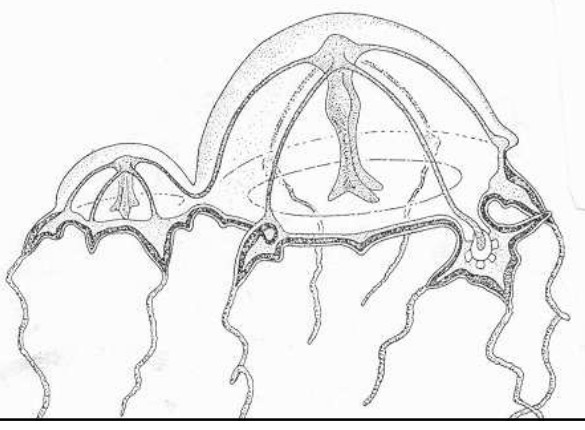
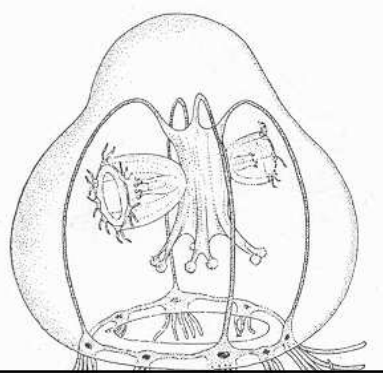
Tubularia



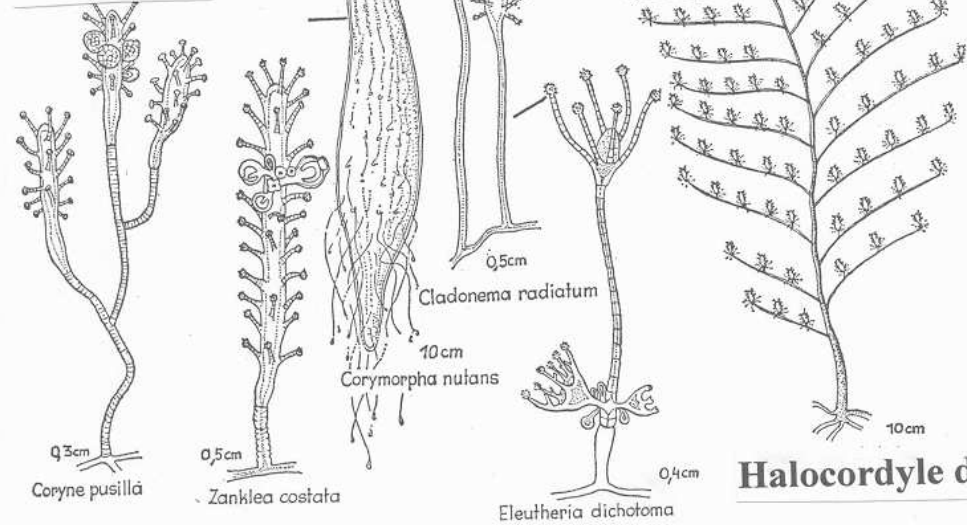
Aglaura



Sarsia



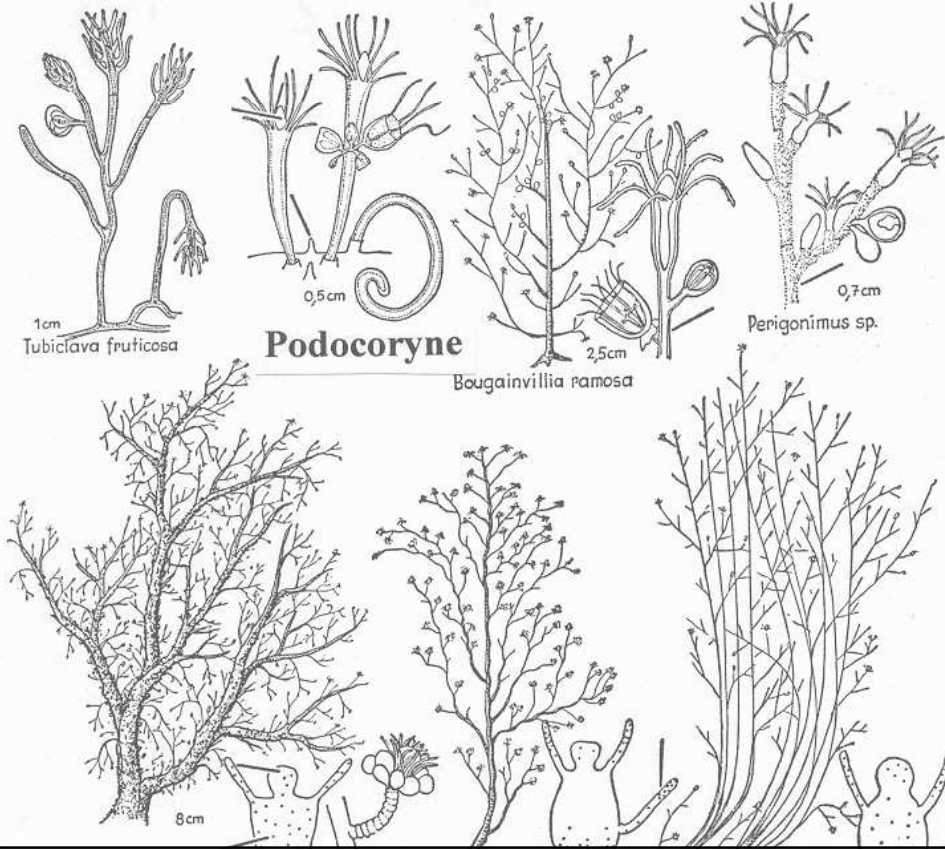
**Tubularia**

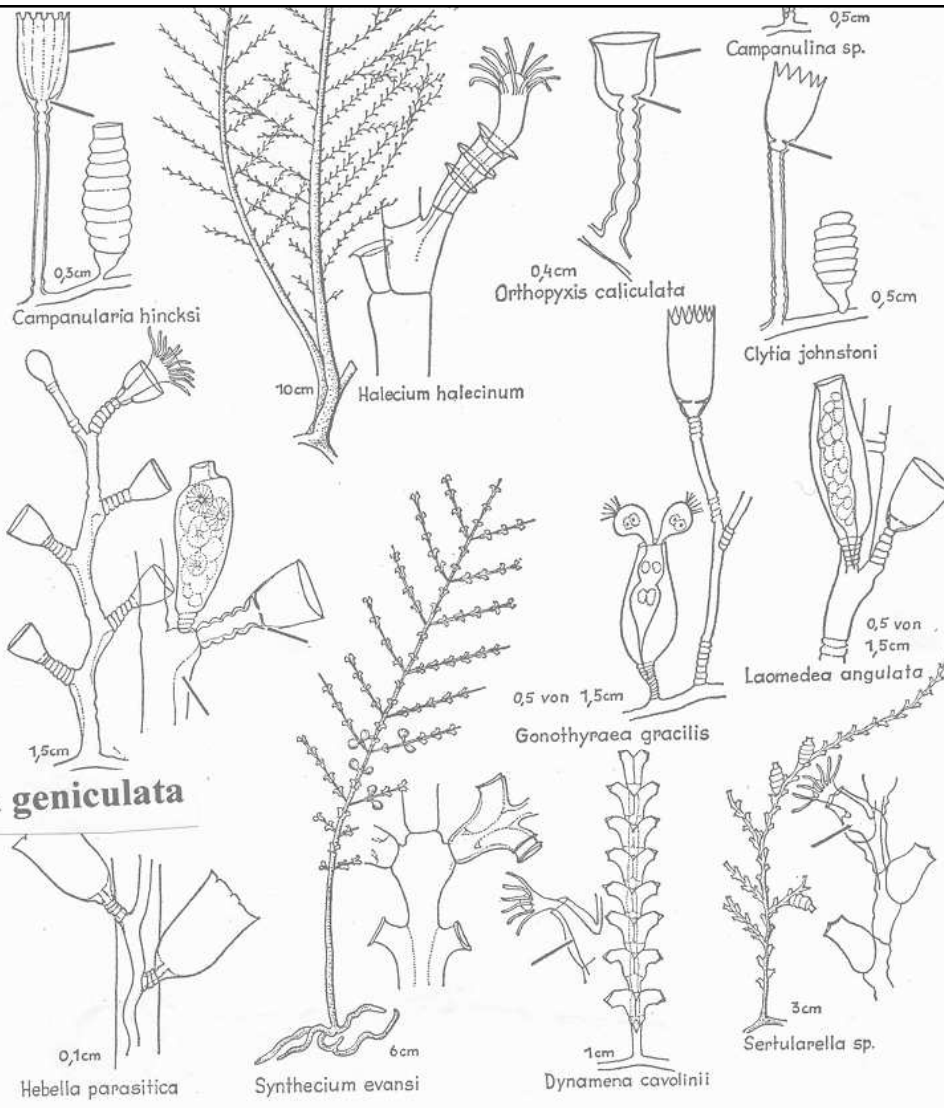


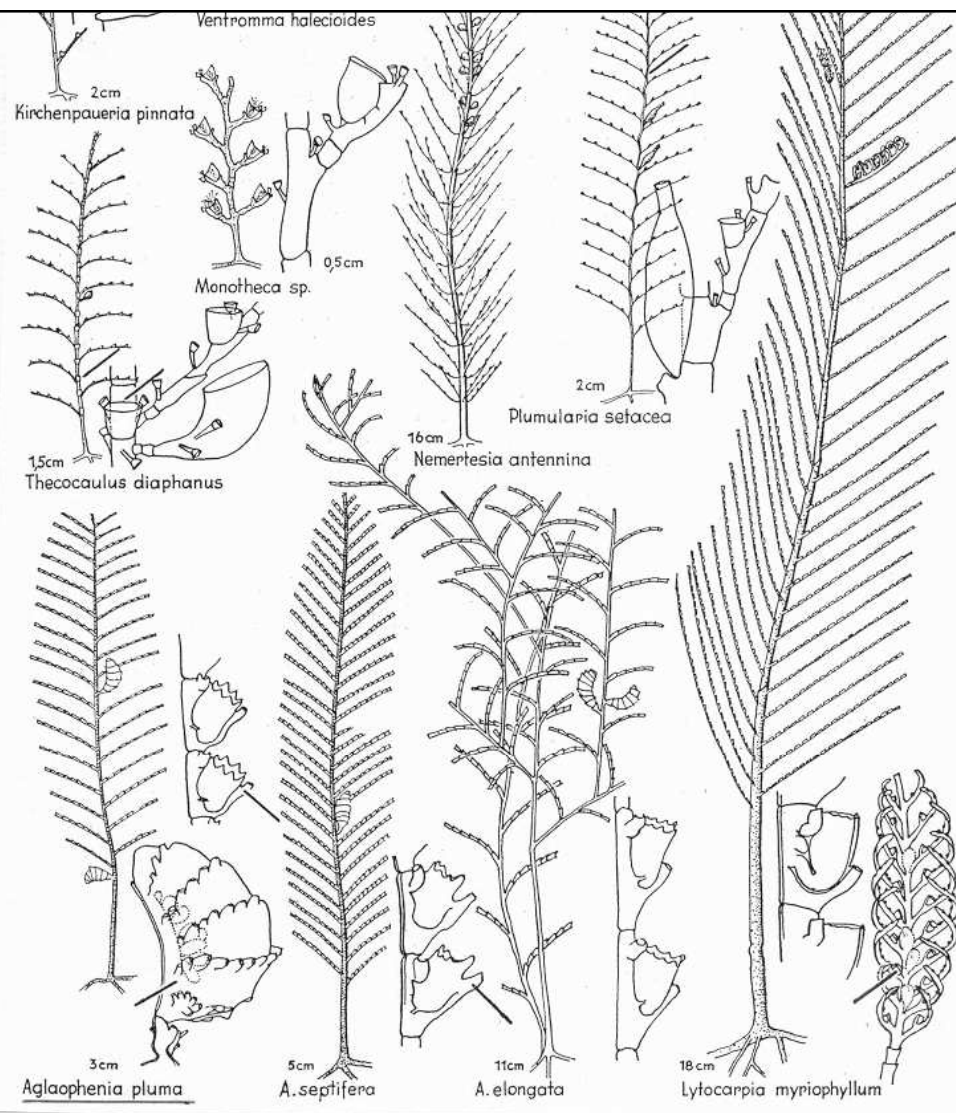
Tafel 40

Clavidae-Eudendriidae (Athebate Hydropolypen II)

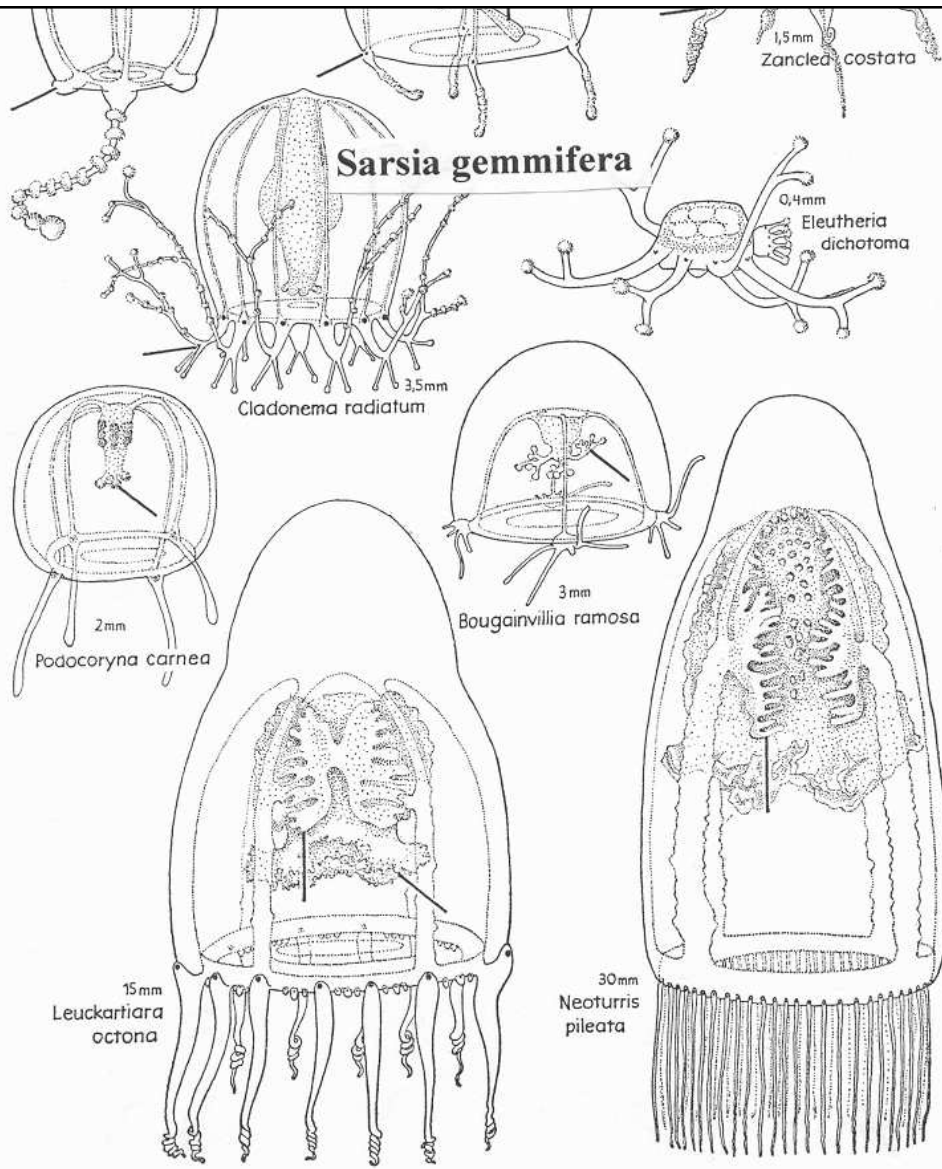
16B

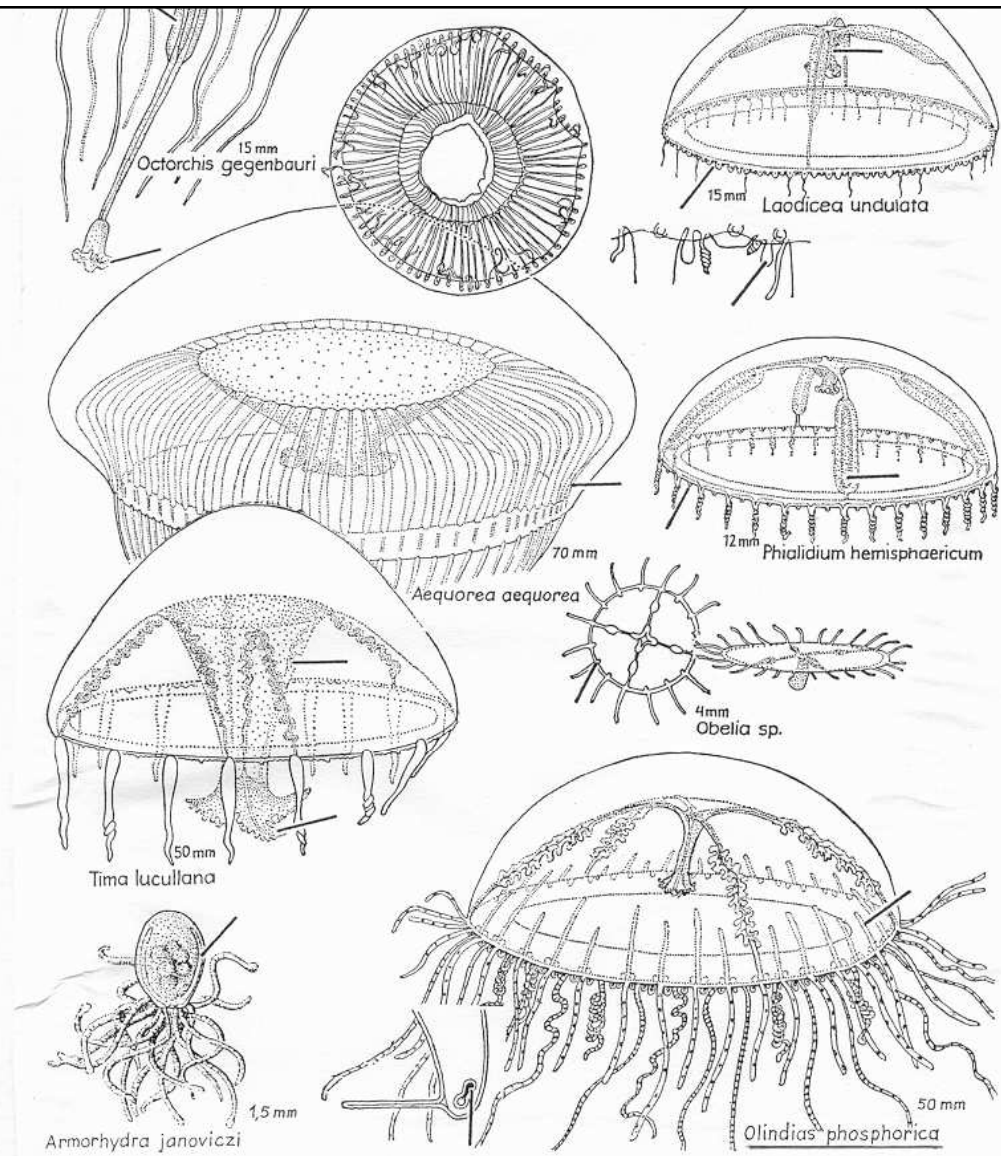






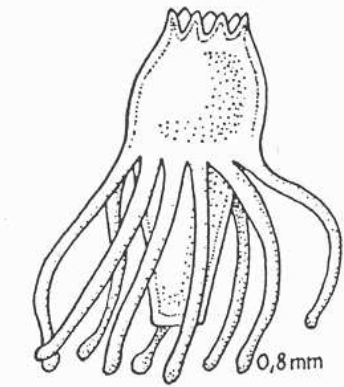
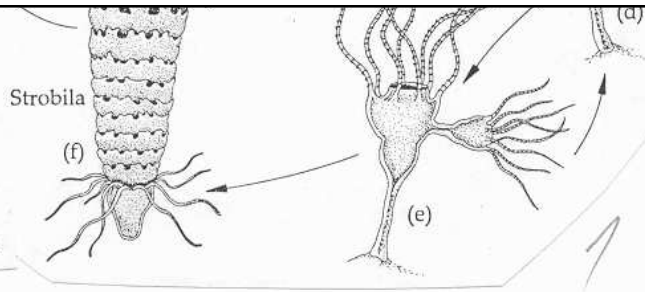
**Aglaophenia pluma**



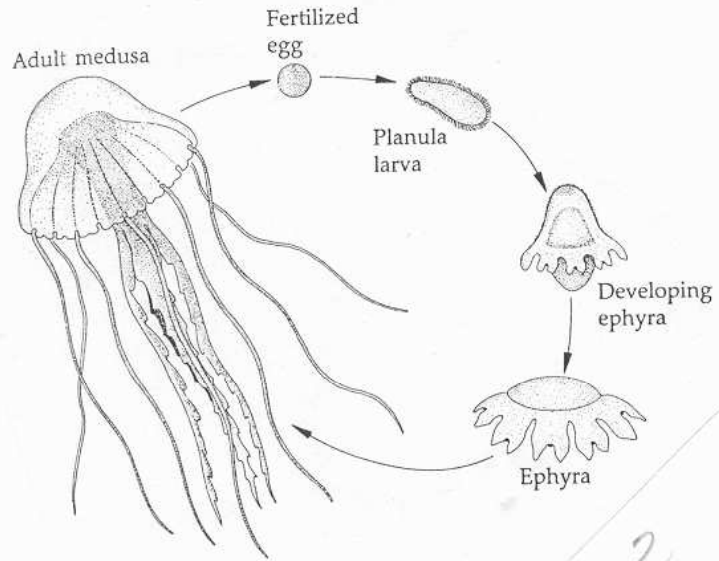


***Olindias phosphorica***

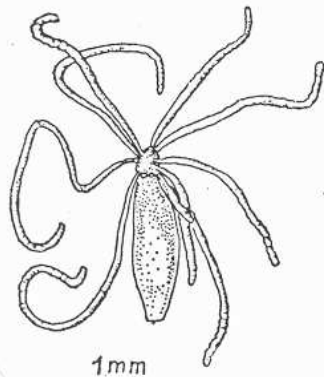
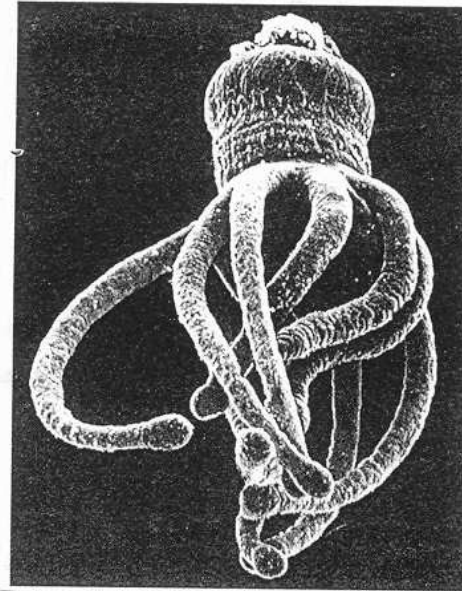
*Aurelia aurita*



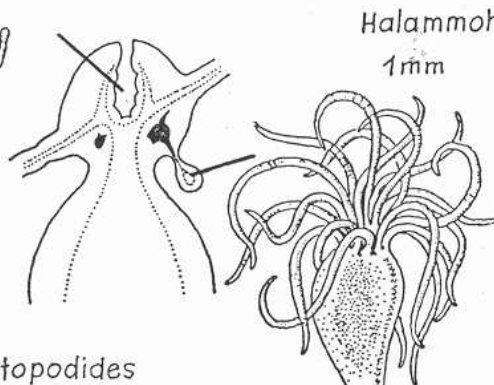
*Actinula von Tubularia*



*Pelagia noctiluca*

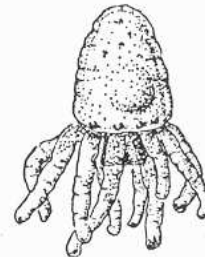


*Halammohydra octopodides*



*Halammohydra schulzei*

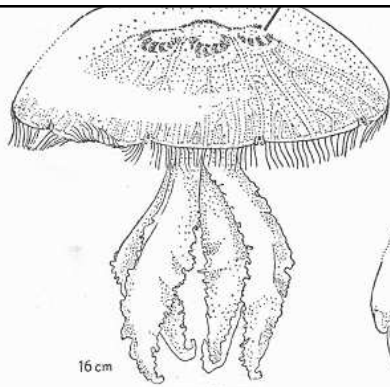
1mm



0,5 mm

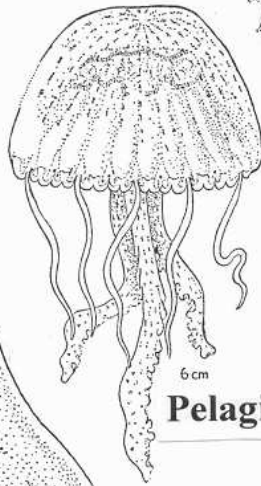
*Otohydra vagans*





16 cm

**Aurelia aurita**



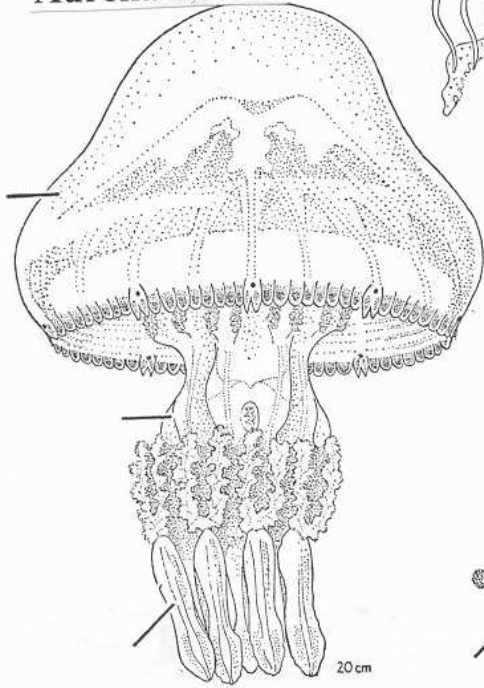
6 cm

**Pelagia noctiluca**



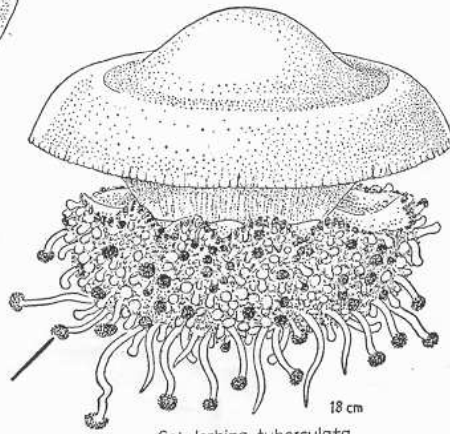
13 cm

**Chrysaora hysoscella**



20 cm

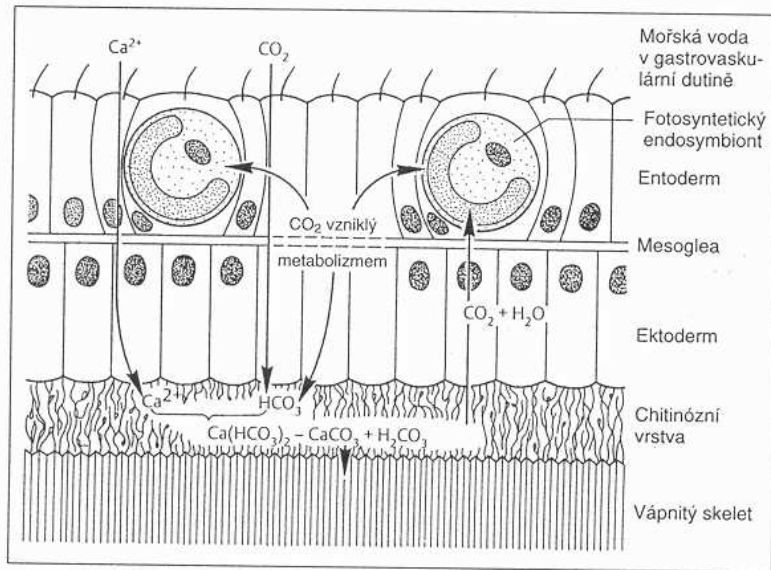
**Rhizostoma pulmo**



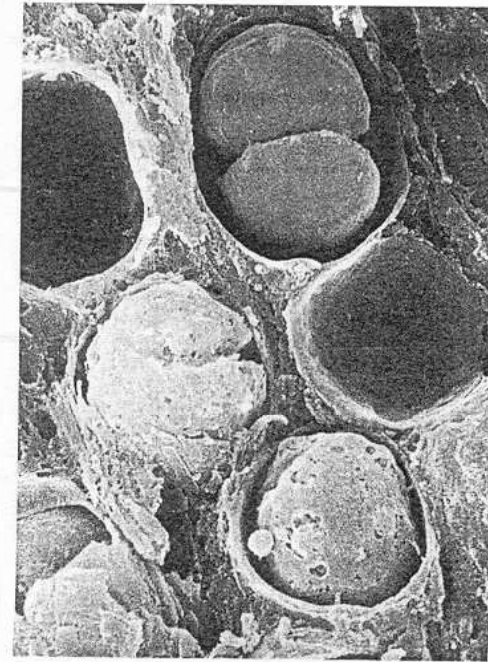
18 cm

**Cotylorhiza tuberculata**

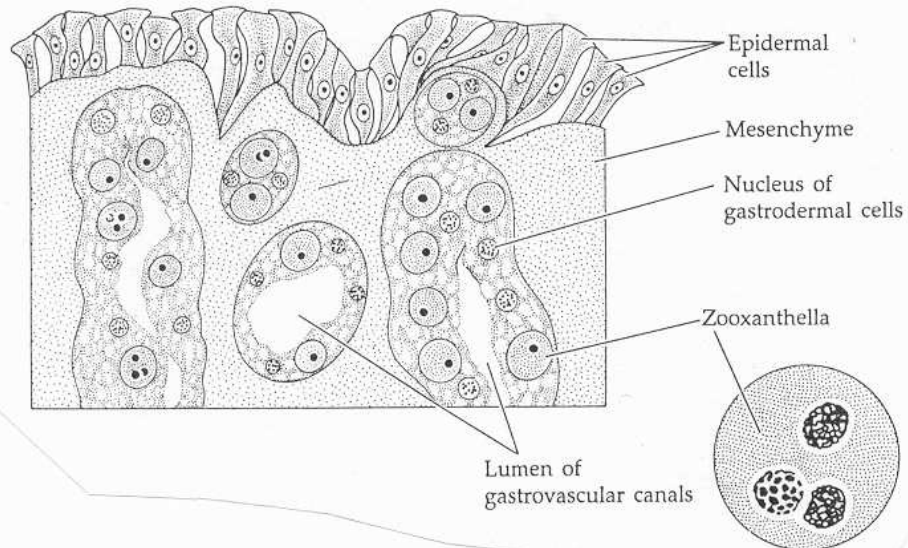
# Arachnitis

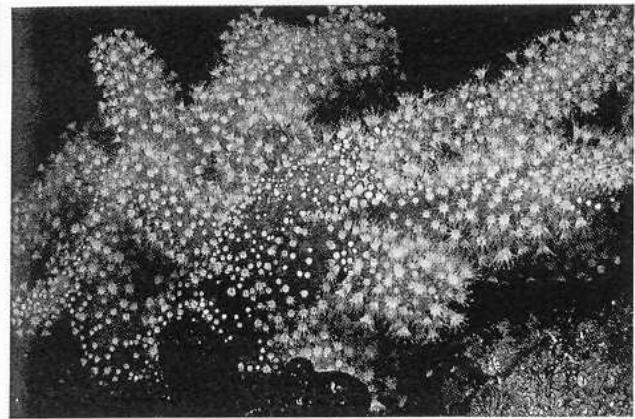
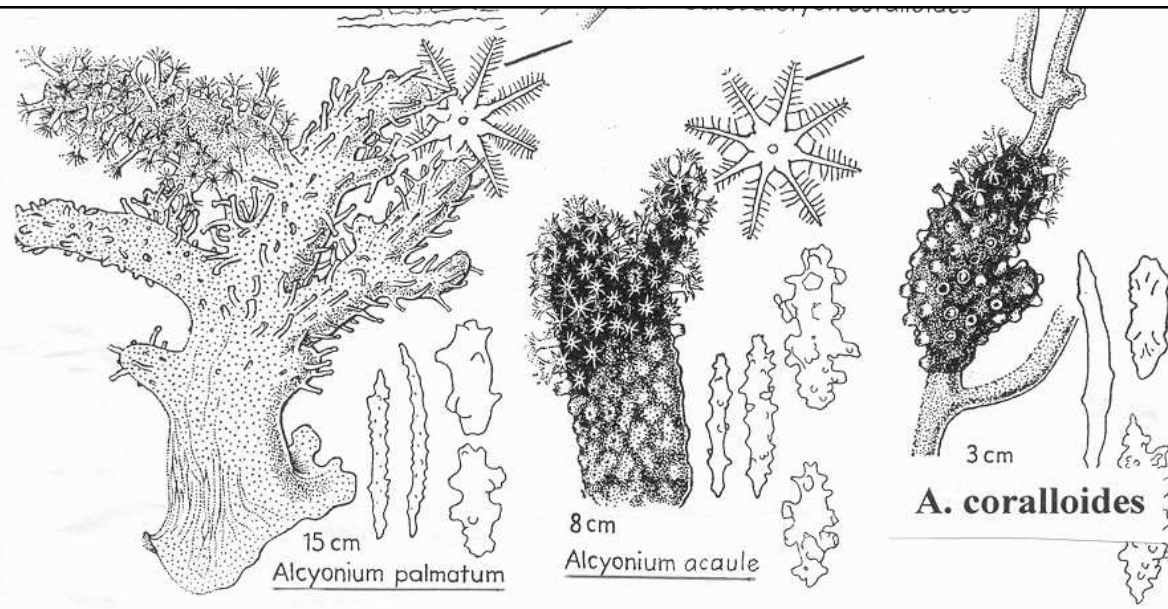


Obr. 327 Schéma fyziologických interakcí mezi korály a jejich endobiotickými zooxantelami (podle Remaneho et al.).

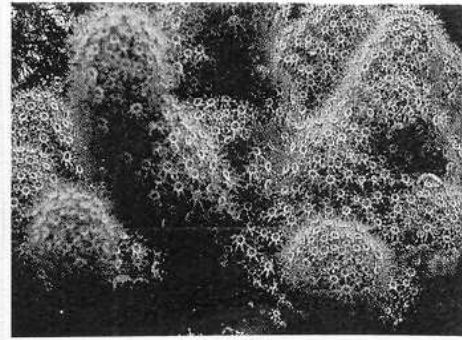


2





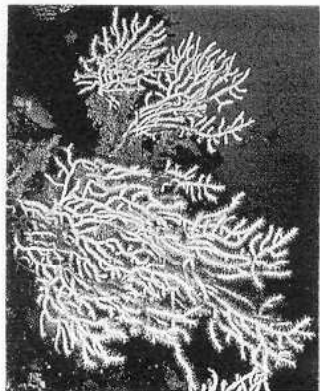
*Alcyonium palmatum*



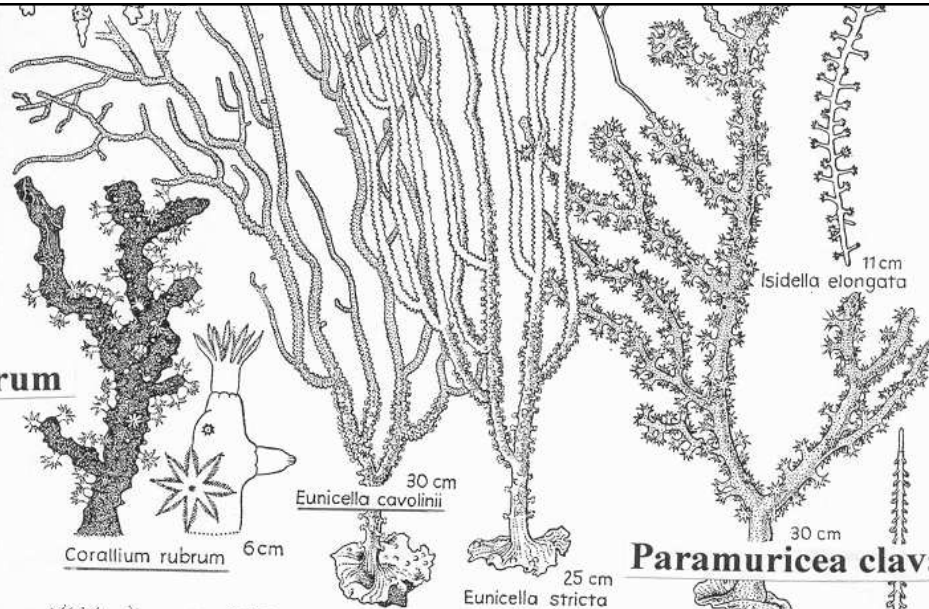
*A. acaule*



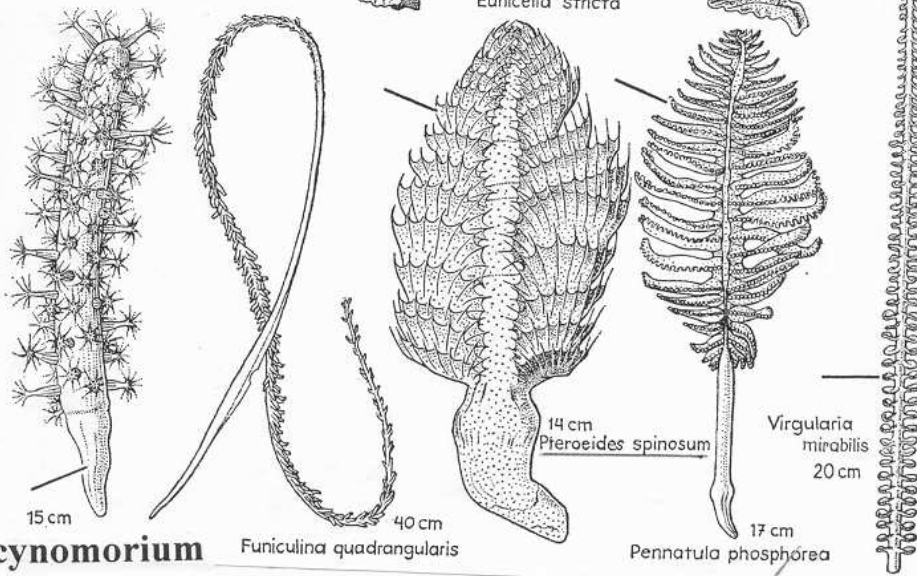
**Corallium rubrum**



**Eunicella cavolinii**

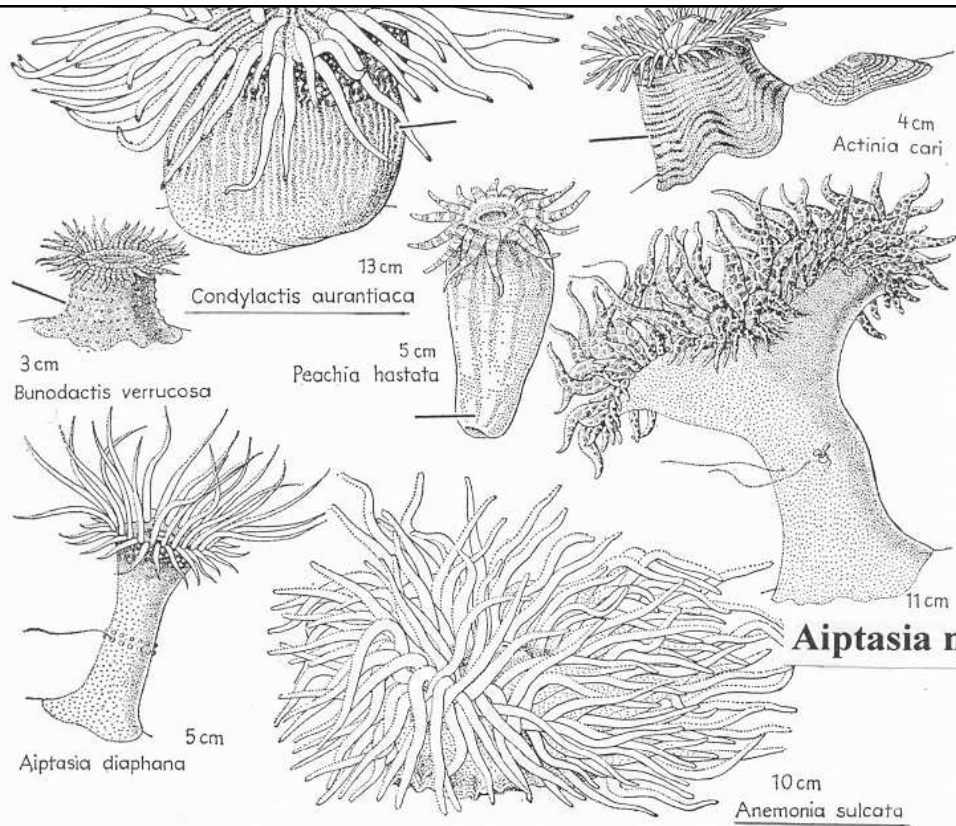


**Paramuricea clavata**

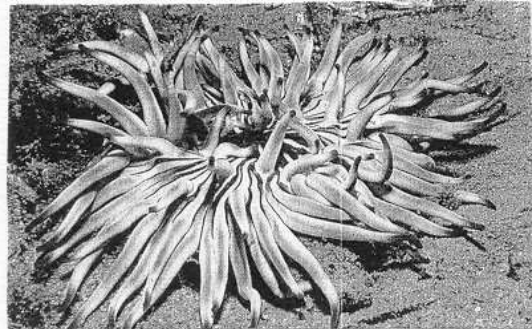


**Veretillum cynomorium**

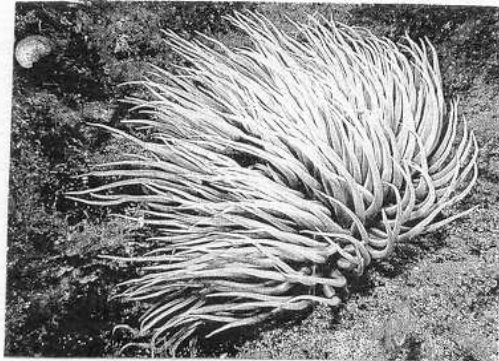
**Pteroeides spinosum**



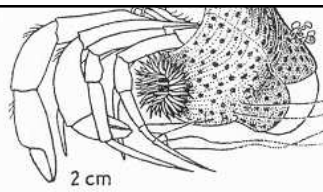
***Actinia equina***



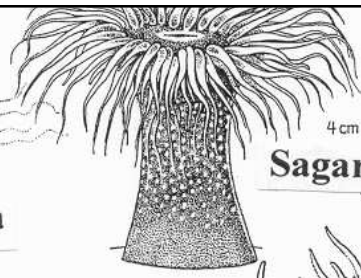
***Condylactis aurantiaca***



***Anemonia sulcata***

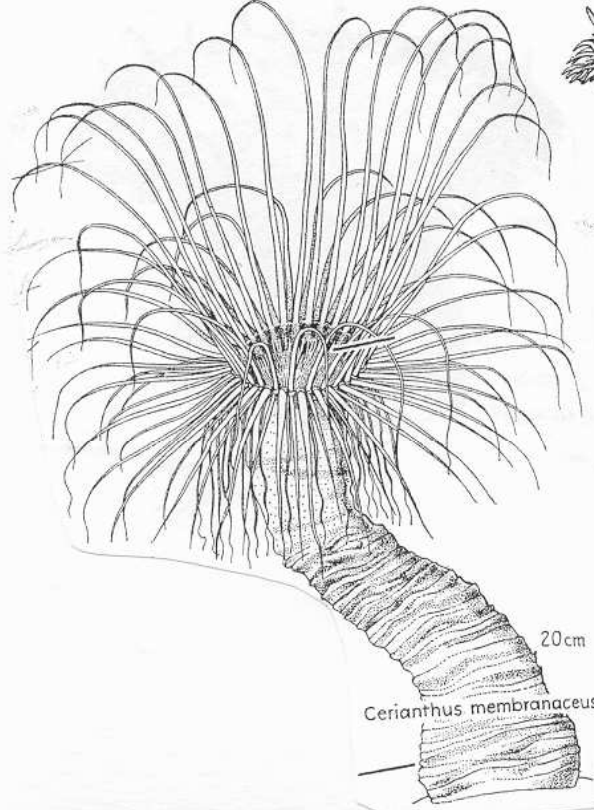


2 cm  
**Adamsia palliata**

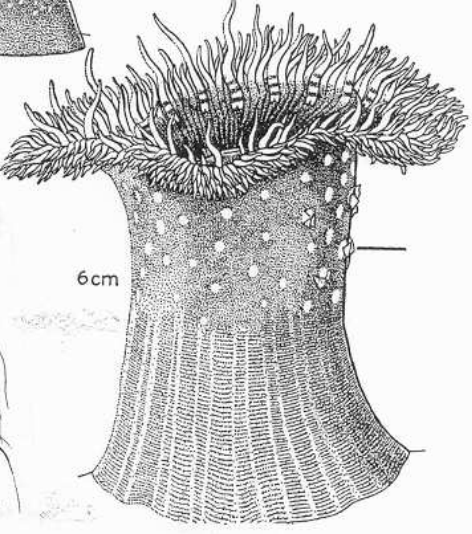


4 cm  
**Sagartia elegans**

3,5 cm  
**Calliactis parasitica**

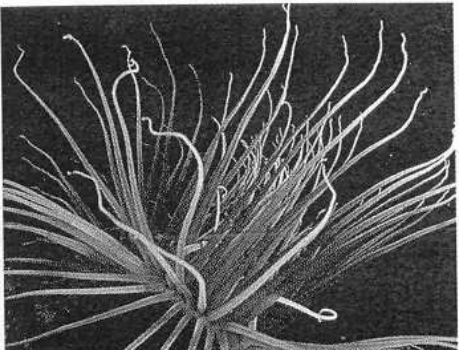
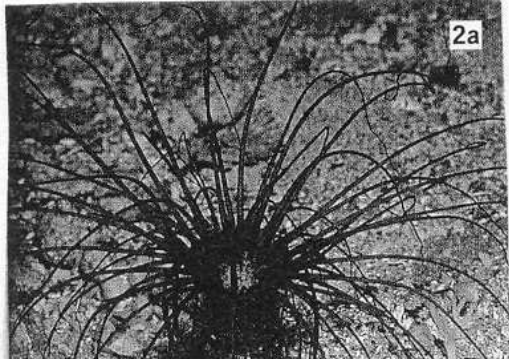


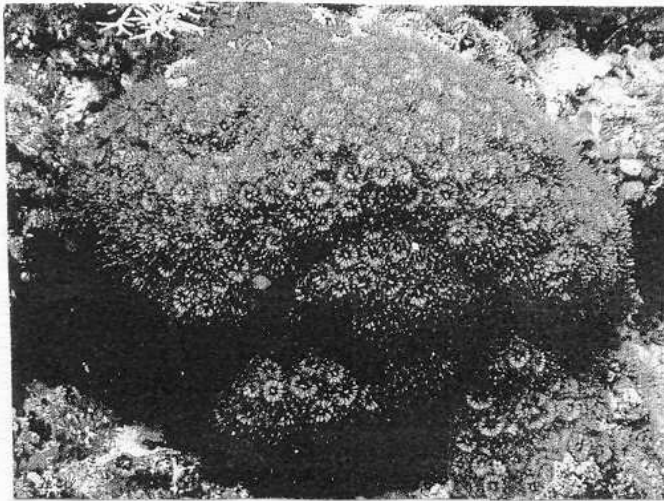
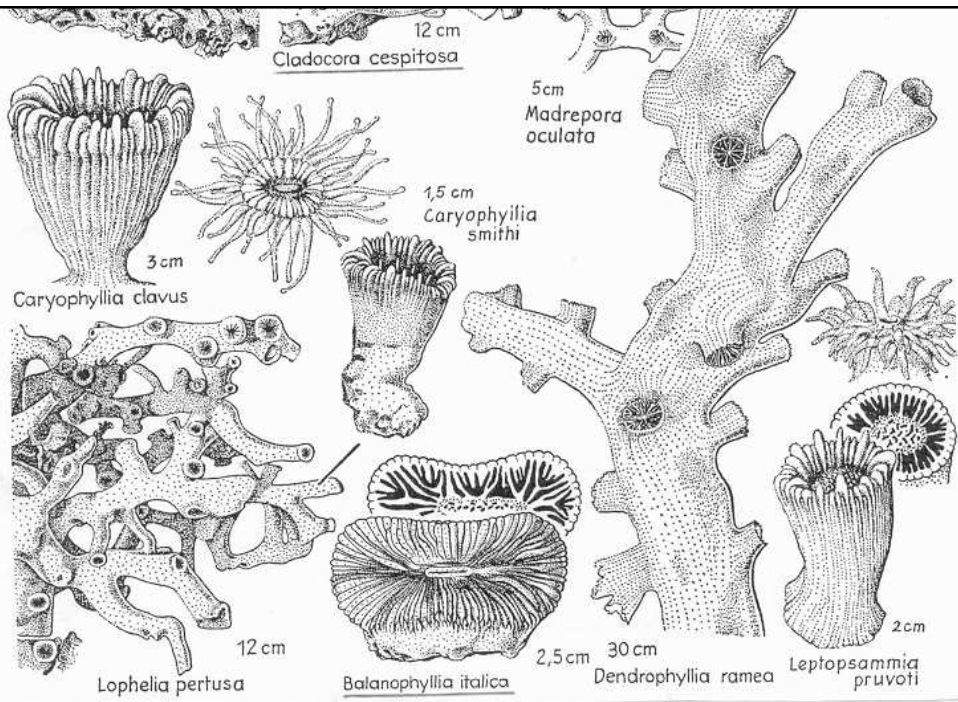
20 cm  
**Cerianthus membranaceus**



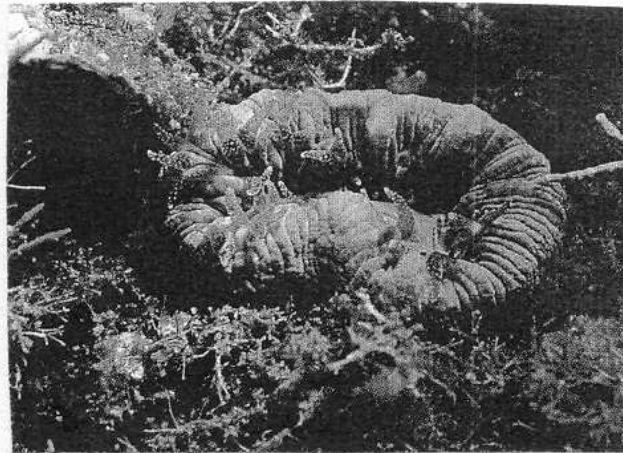
6 cm  
**Cereus pedunculatus**

18E

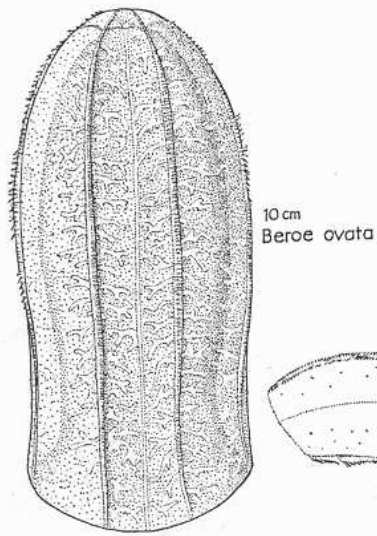
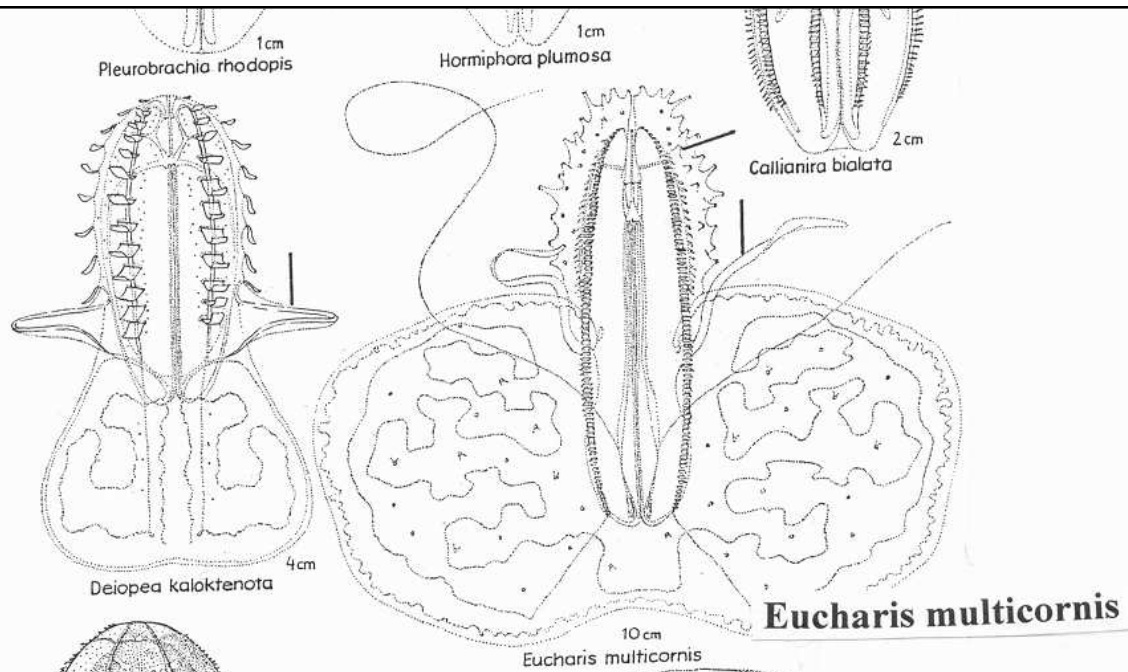




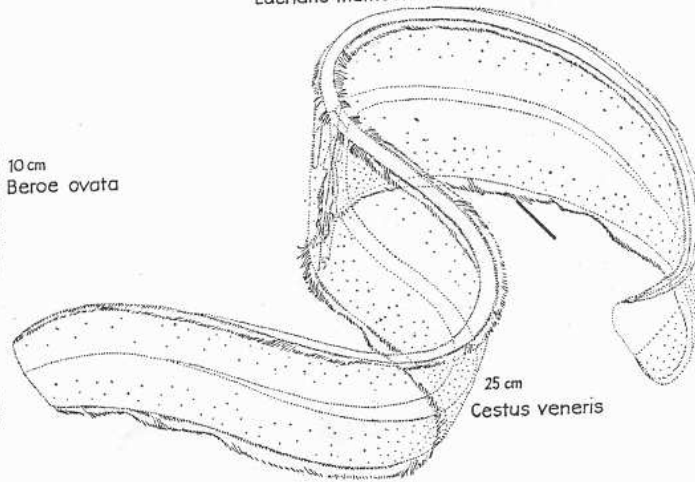
*Cladocora cespitosa*



*Balanophyllia europaea*



**Beroe ovata**



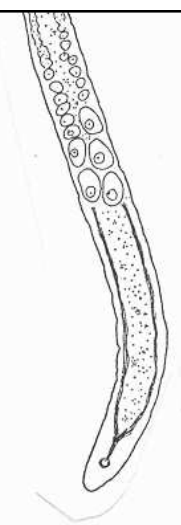
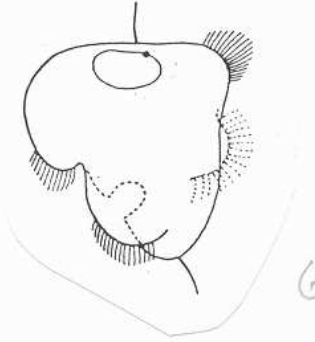
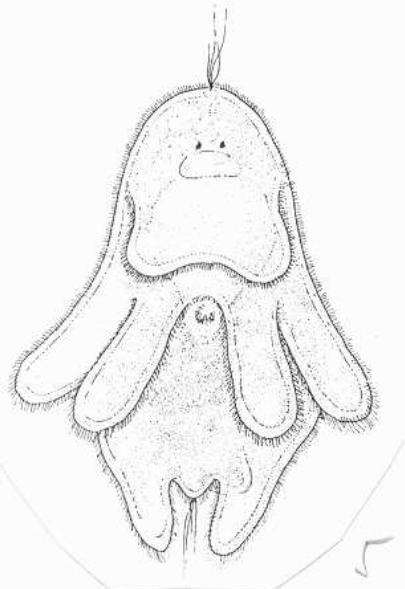
**Cestus veneris**



**Convoluta convoluta**

**Paraproporus rubescens**

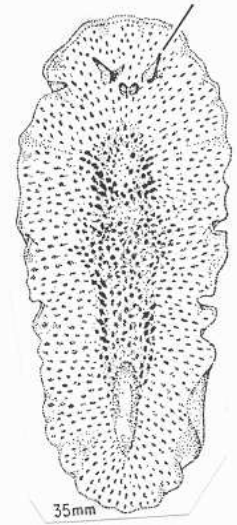
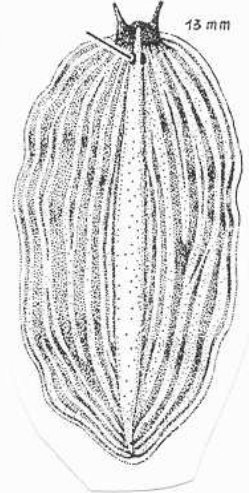
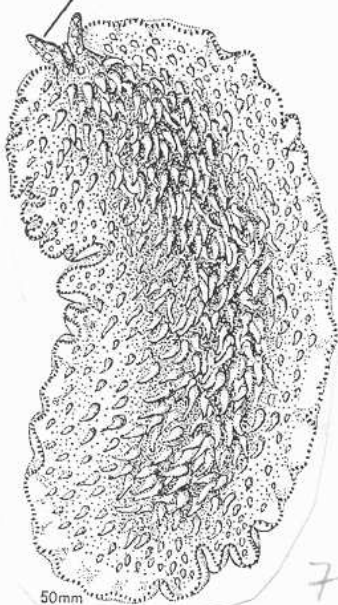
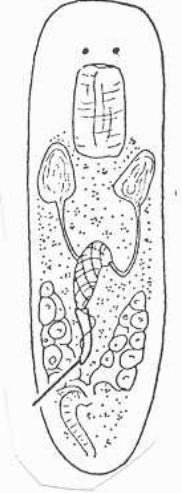
**Microstomum  
rubromaculatum**



**Nemertoderma  
psammicola**

**Müllerova larva**

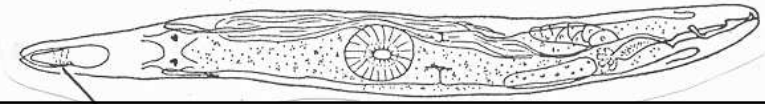
**Goetteho larva**



**Vejdovska suecica**

**Stylochus pilidium**

**Prosthecereus  
giesbrechtii**



50mm

13 mm

35mm

7

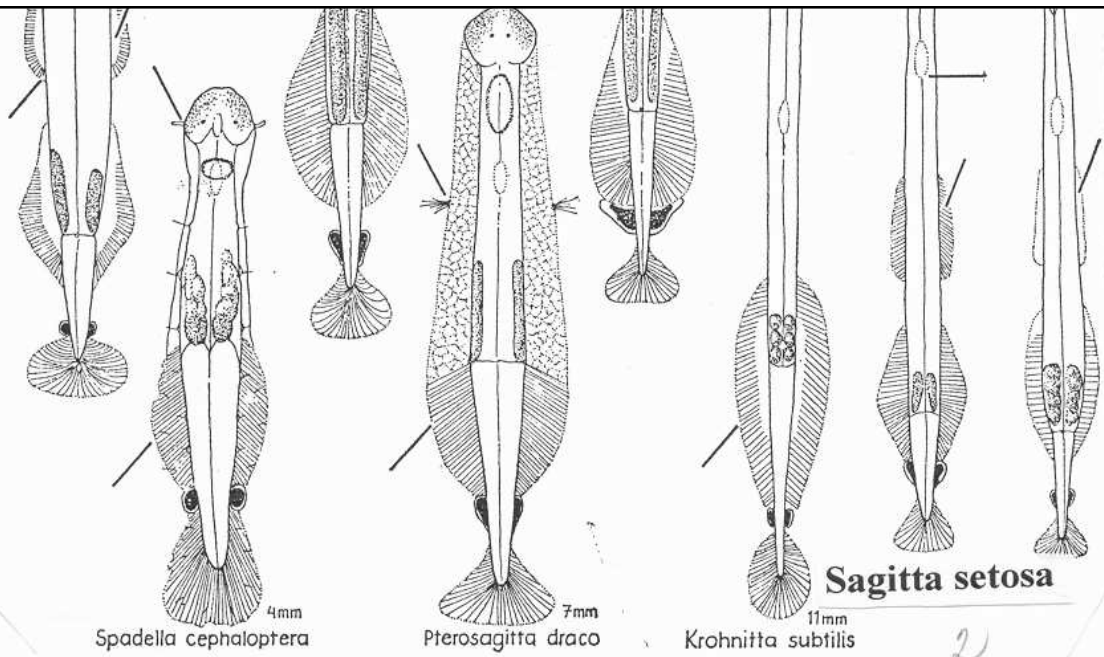
9

8

3

10

6



4mm  
*Spadella cephaloptera*

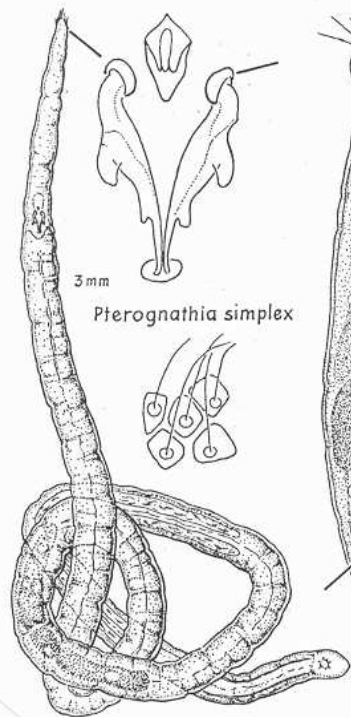
7mm  
*Pterosagitta draco*

11mm  
*Krohnitta subtilis*

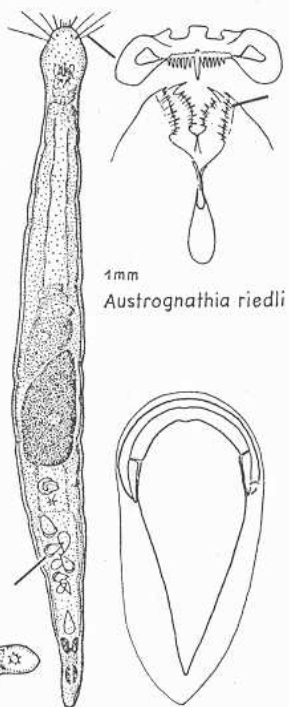
**Sagitta setosa**

2

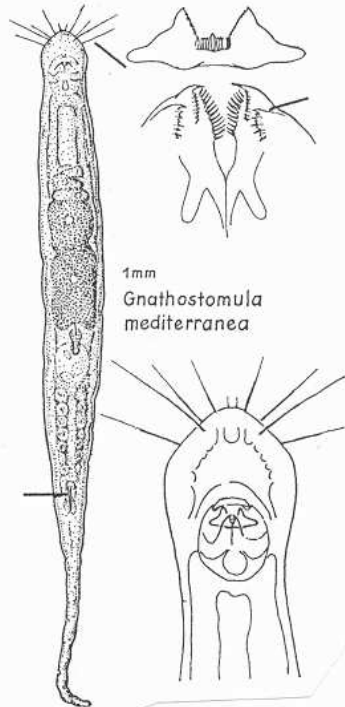
1 ***Spadella cephaloptera***



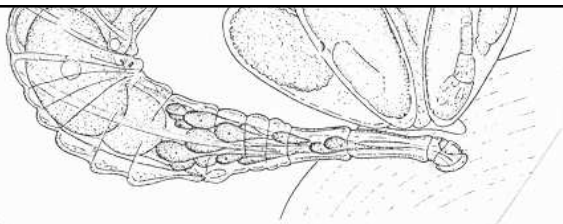
3mm  
*Pterognathia simplex*



1mm  
*Austrognathia riedli*

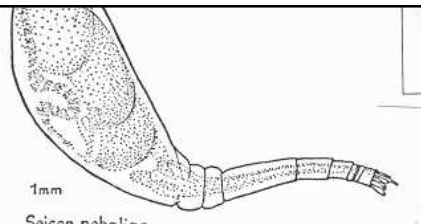


1mm  
*Gnathostomula mediterranea*



1

**Seison annulatus**



1mm  
Seison nebaliae

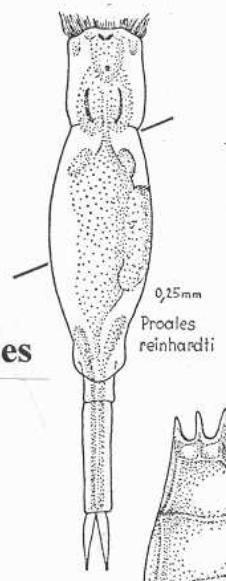
2

*Brachionus plicatilis*



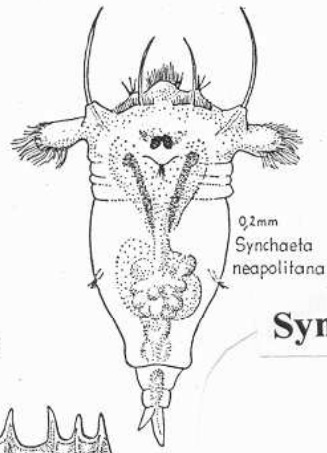
3

**Brachionus plicatilis**



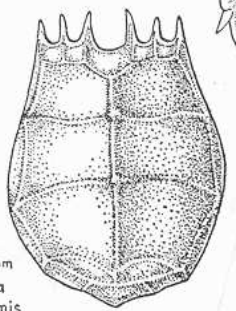
0,25mm  
Proales reinhardti

**Proales**



0,2mm  
Synchaeta neapolitana

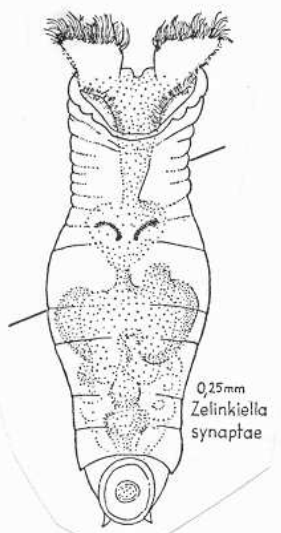
**Synchaeta**



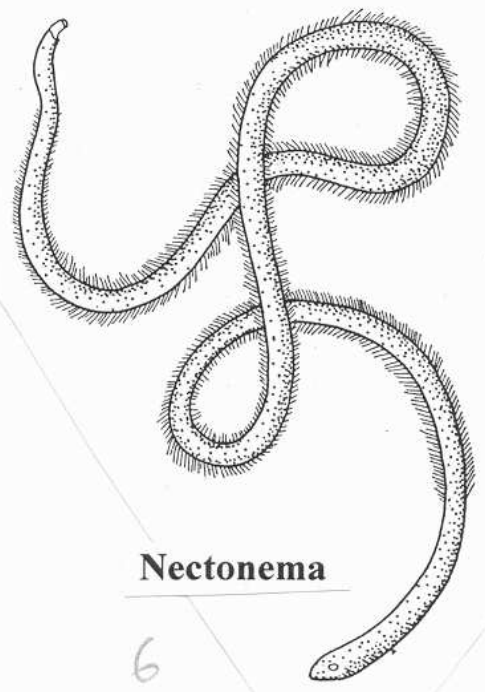
0,18mm  
Keratella cruciformis

**Keratella**

4

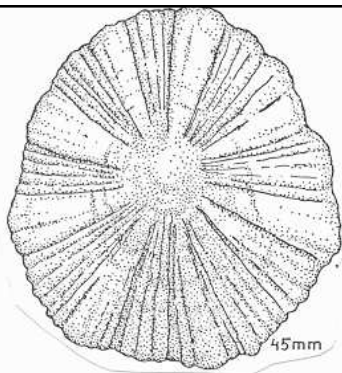


0,25mm  
Zelinkiella synaptae

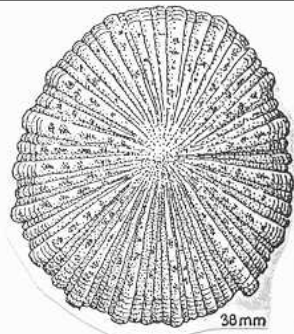


**Nectonema**

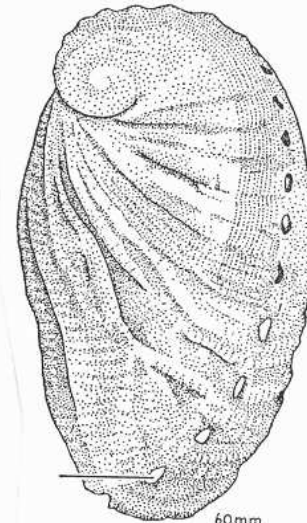
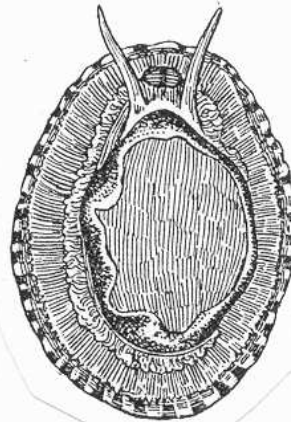
6



**Patella coerulea**

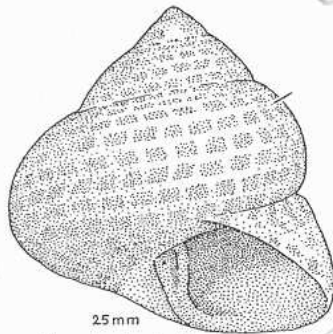


**Patella lusitanica**



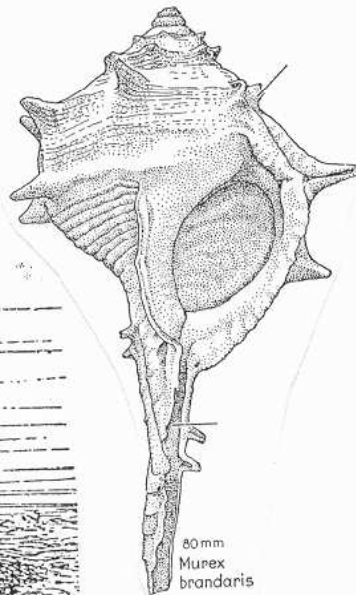
**Haliotis lamellosa**

**Haliotis tuberculata**

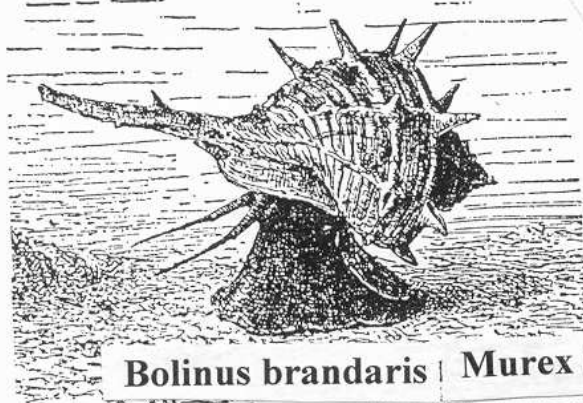


**Monodonta turbinata**

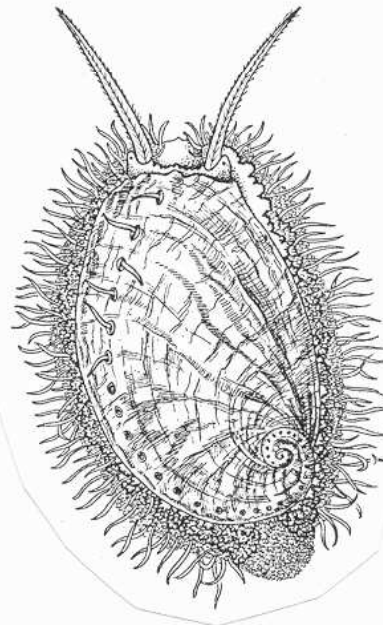
**Monodonta**



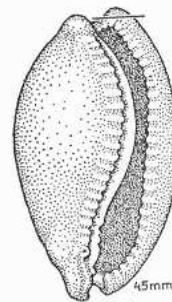
**80mm  
Murex  
brandaris**



**Bolinus brandaris | Murex brandaris**



**Frunculariopsis  
runculus**



**45mm**

3

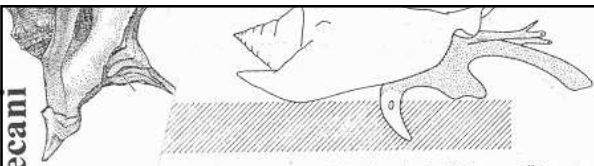
5

4

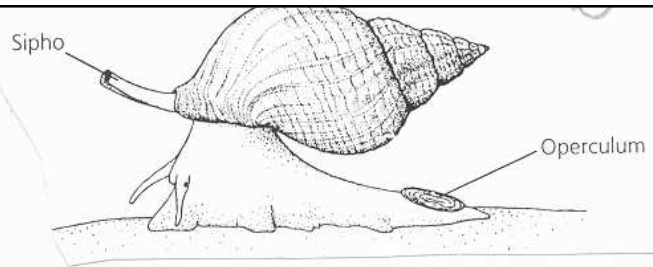
7

Aporrhais pespelecani

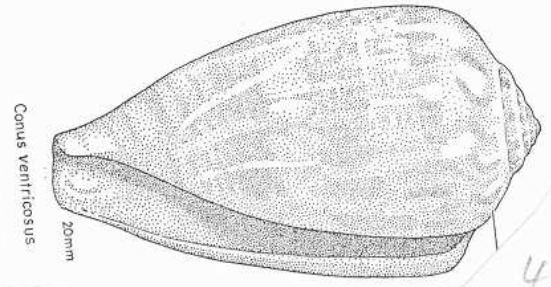
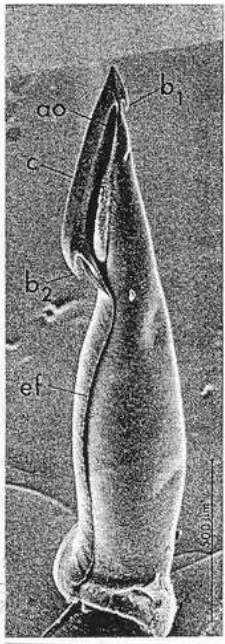
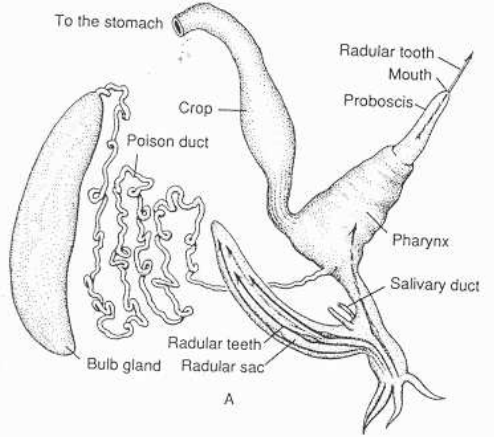
Strombus



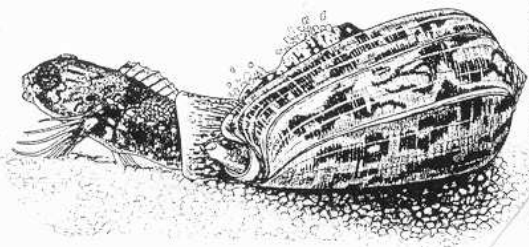
Die Fortbewegung von *Strombus* in drei Phasen. Über den in den Untergrund von Hinterfuß mit dem messerförmigen Deckel kantet sich das Tier „Schritt um nach vorn.“ — Nach SOLEM 1974.



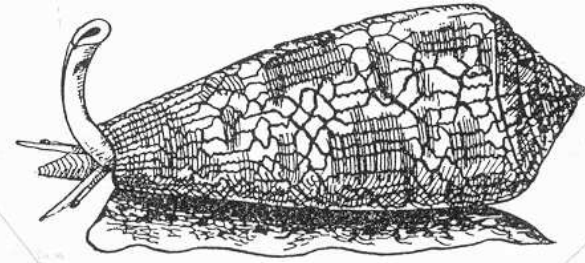
Buccinum



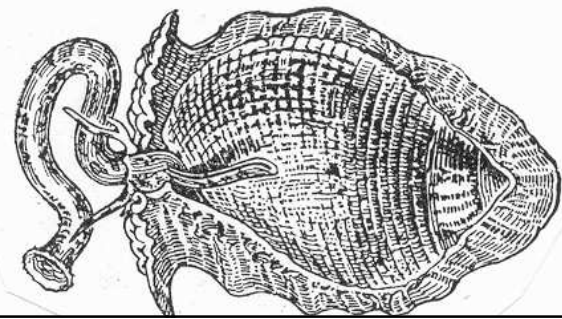
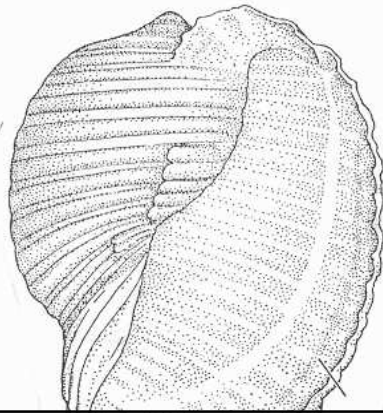
C. ventricosus



Conus 3



C. textile

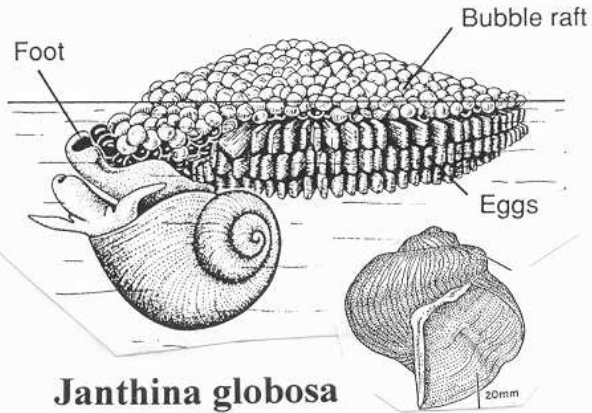


trieren; mit Aktinie. Länge des Gehäuses etwa 4 cm. Aus Ankel

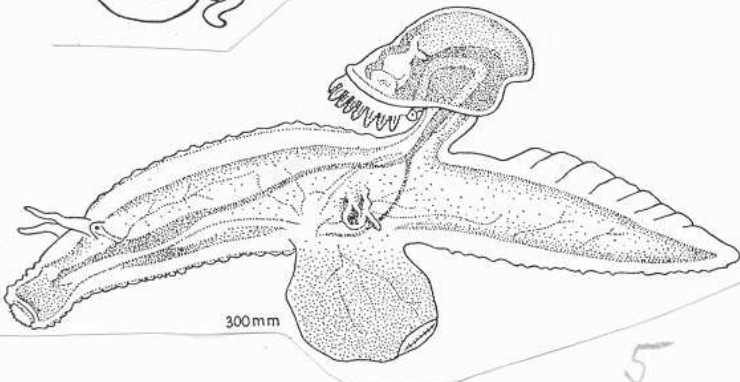
*Cerithium vulgatum*



*Vermetus arenarius*



*Janthina globosa*



*Carinaria mediterranea*

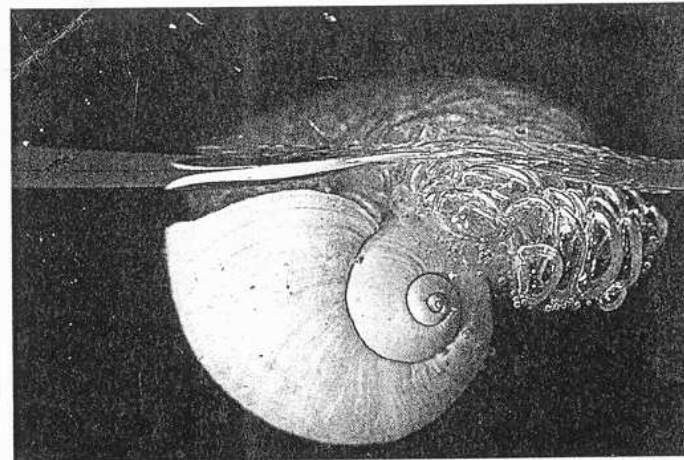
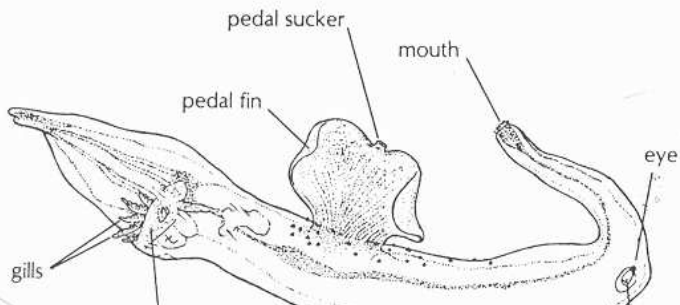


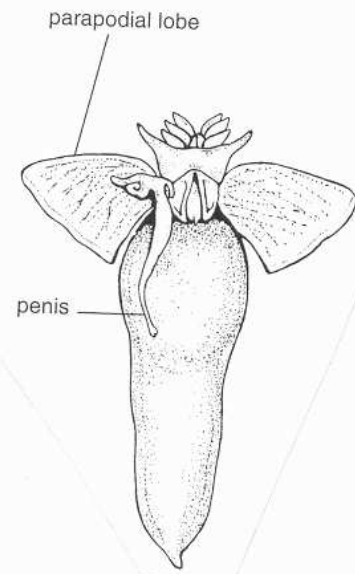
Abb.423: *Janthina janthina*, Veilchenschnecke (Mesogastropoda). Gehäuse 4 cm Durchmesser. Baut an der Meeresoberfläche ein Floß aus erhärtenden Sekretblasen und treibt zeitweilig als Teil des Pleustons an diesem Floß, an das sie auch ihre Eikapseln heftet. Kosmopolit in allen wärmeren Meeren, der sich vor allem von Segelquallen ernährt, mit denen dieser Lebensraum geteilt wird. Der Name „Veilchenschnecke“ geht auf das violette Sekret der Hypobranchialdrüse zurück. Nach Yonge und Thompson (1976).



250 mm  
*Aplysia depilans*

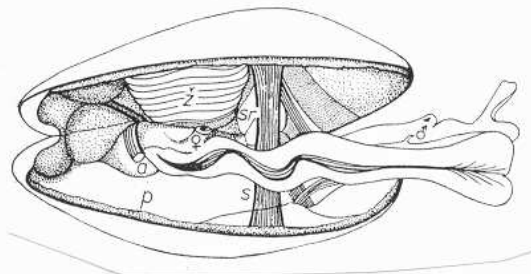
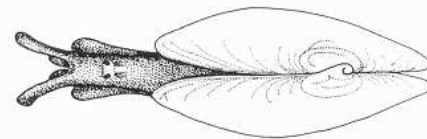
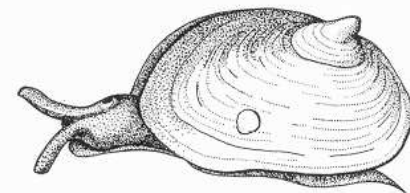


***Aplysia depilans*** 1



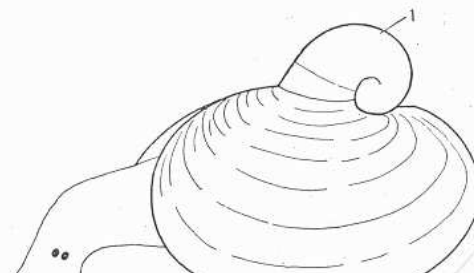
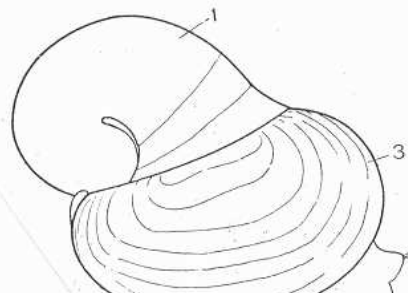
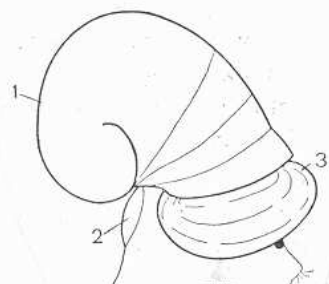
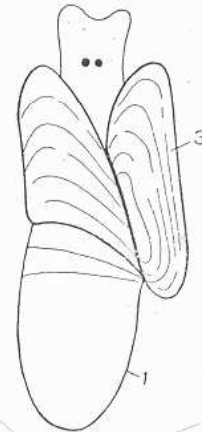
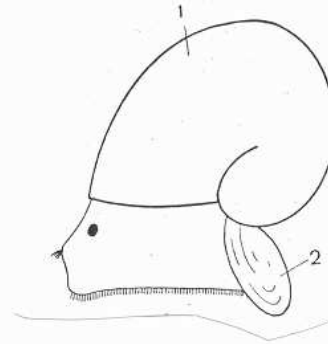
***Clione limacina***

2



***Berhelinia limax***

3



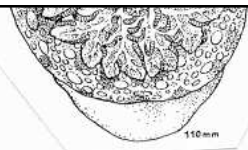
**Peltodoris atromaculata**

1



**Archidoris tuberculata**

2

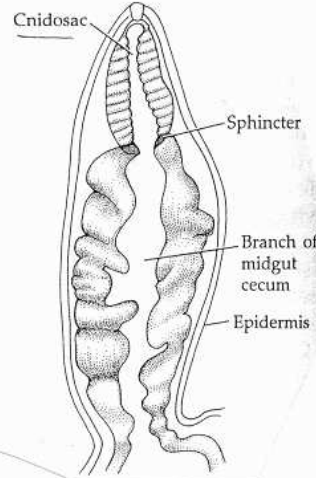
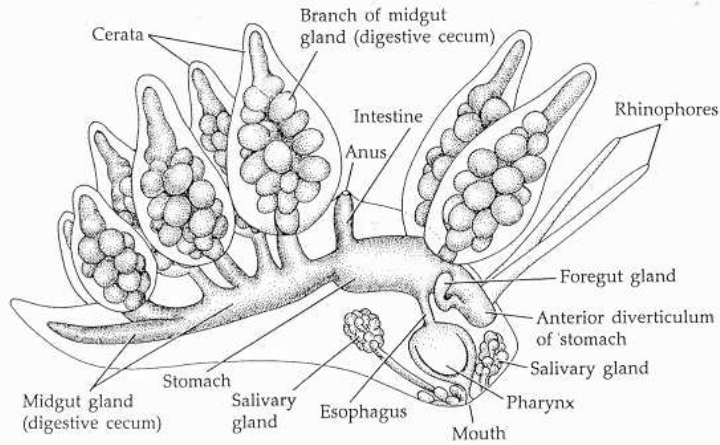


**Dendrodoris limbata**

3

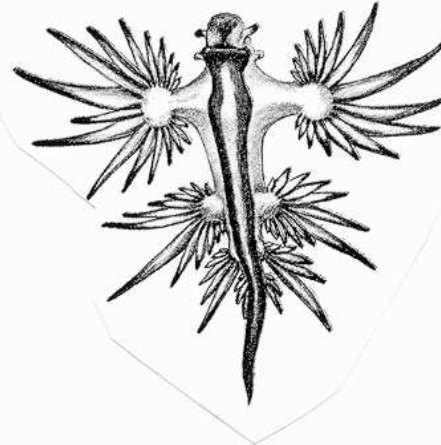
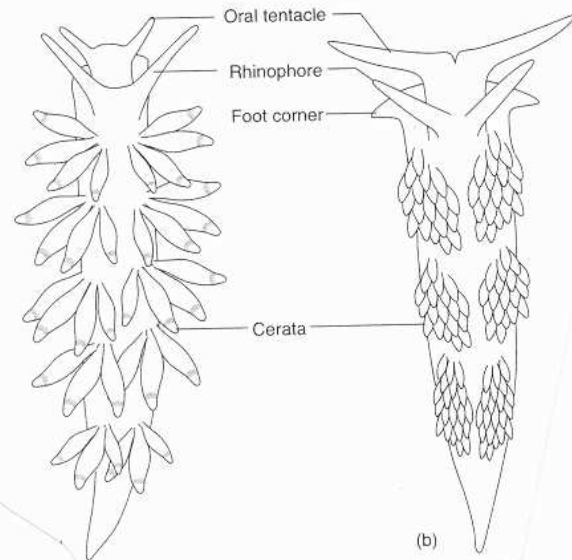
**Flabellina affinis**

4



**Facelina auriculata**

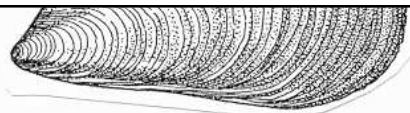
6



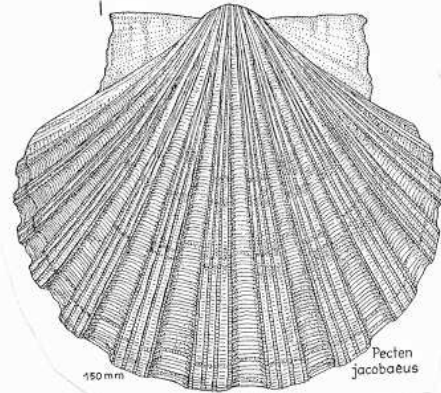
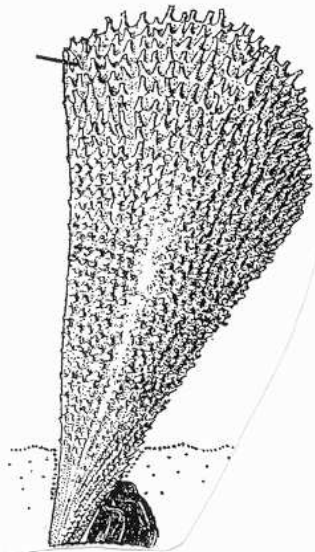
**Glaucus atlanticus**

2

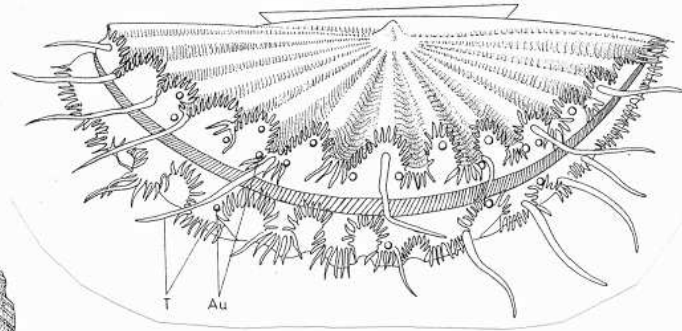




**M. galloprovincialis**



150mm Pecten jacobaeus

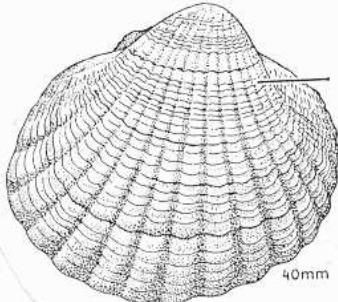


**Pecten jacobaeus**

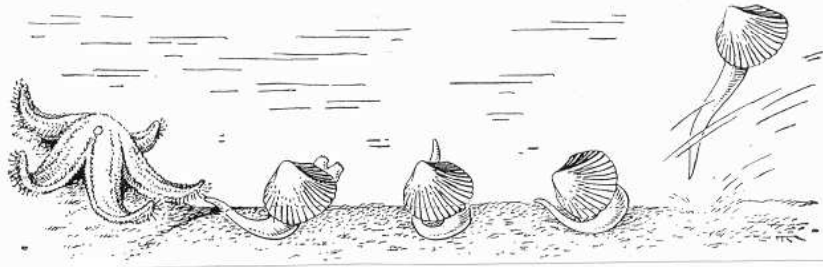
5

**Pinna nobilis**

4

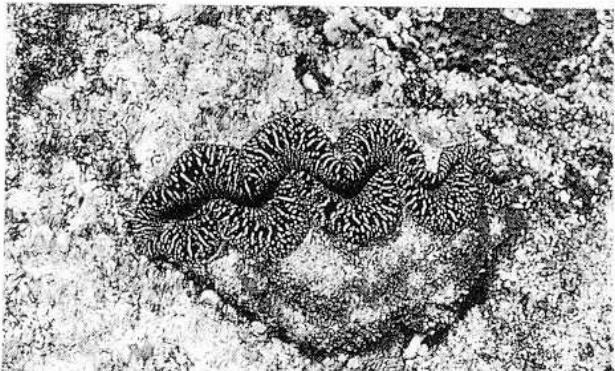


40mm Cardium edule



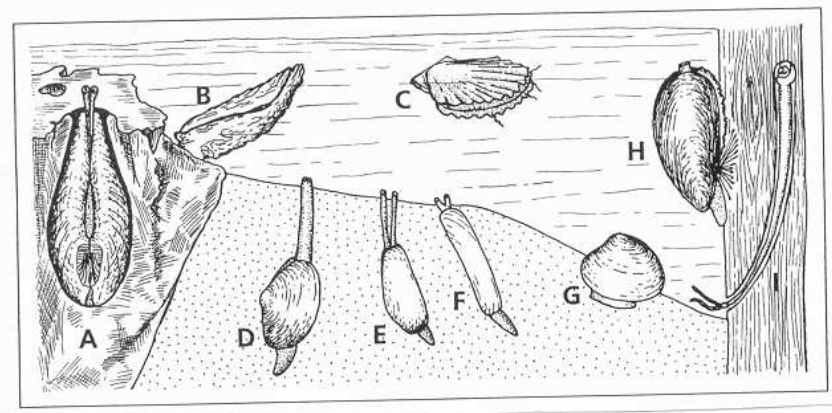
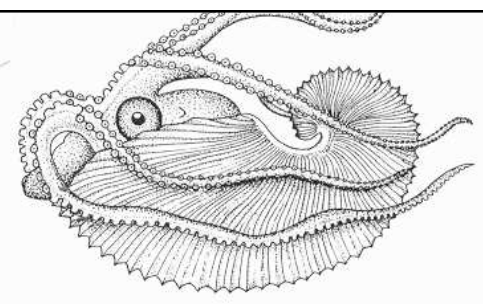
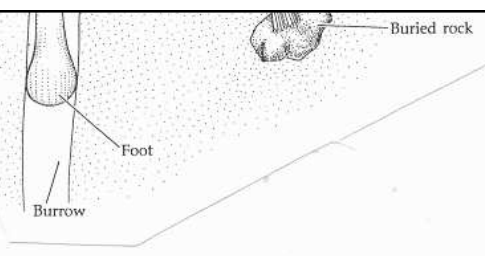
**Cardium**

7

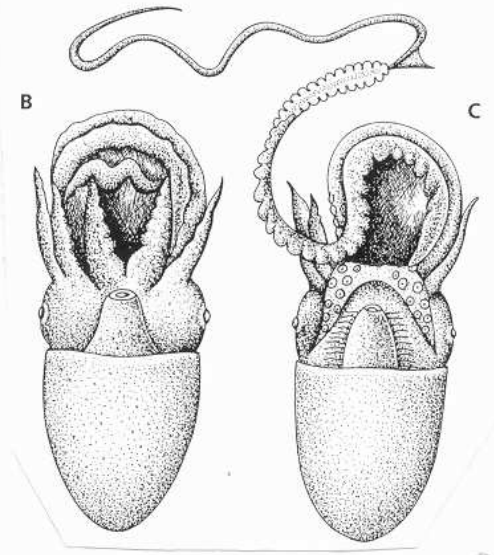


**Lithophaga**

8

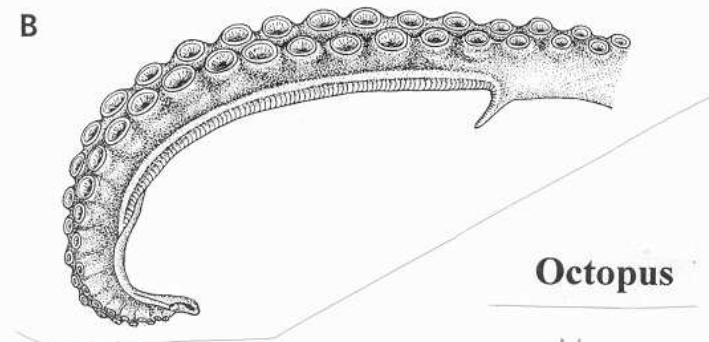
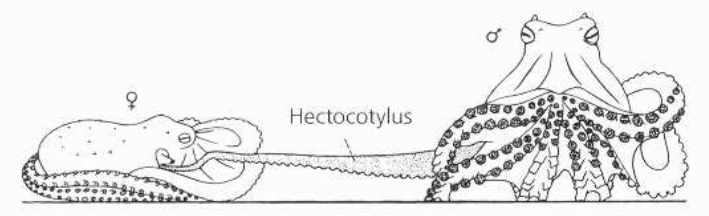


2



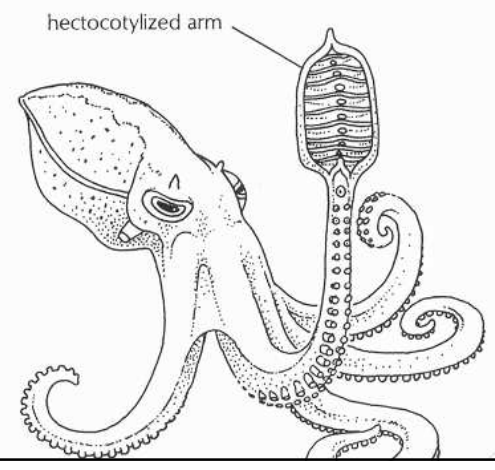
*Argonauta argo*

3

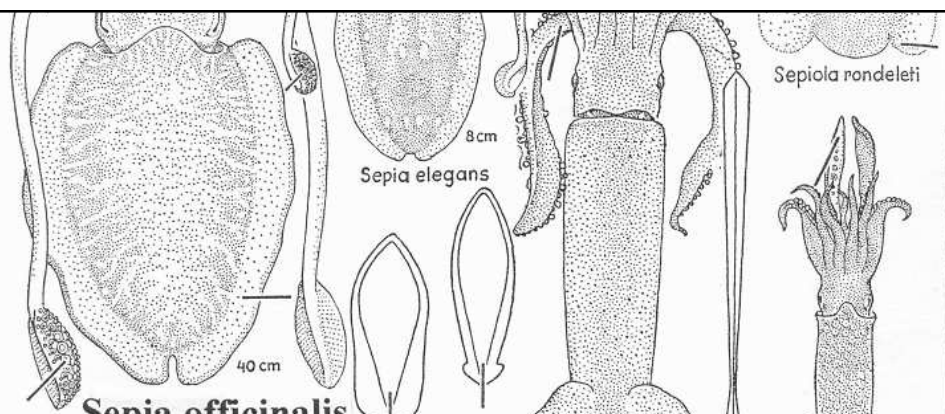


*Octopus*

4



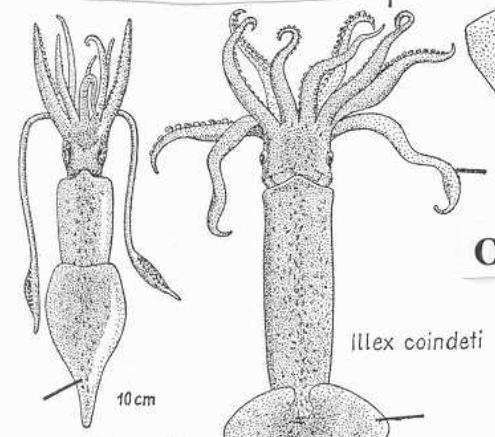
čel. Sepionidae



**Sepia officinalis**

*Sepia elegans*

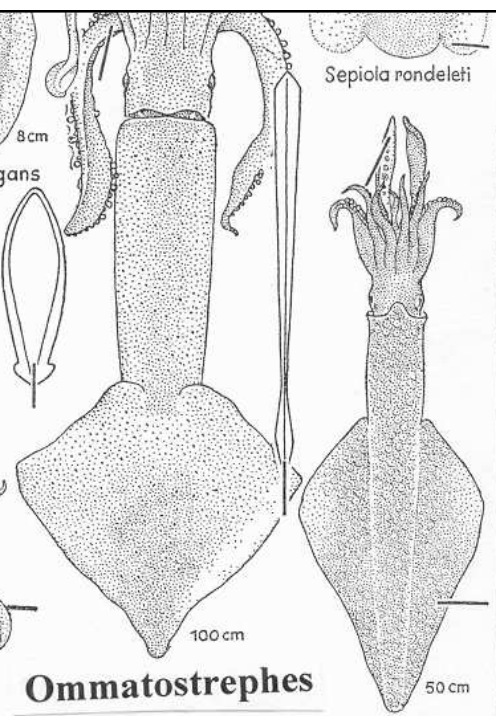
*Sepiola rondeleti*



*Alloteuthis media*

*Illex coindetii*

**Illex**

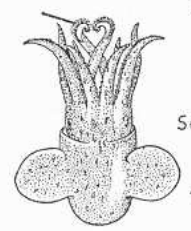


**Ommatostrephes**

*Loligo vulgaris*



**Loligo vulgaris**



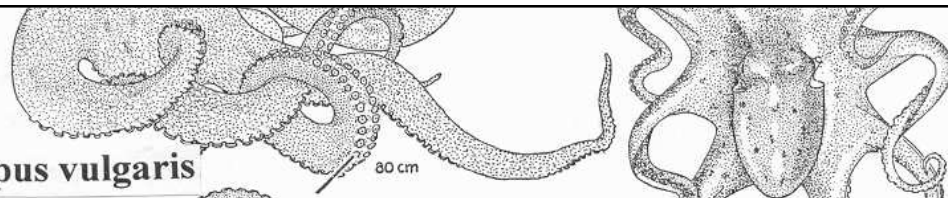
*Sepietta oweniana*

4 cm

čel. Sepiolidae

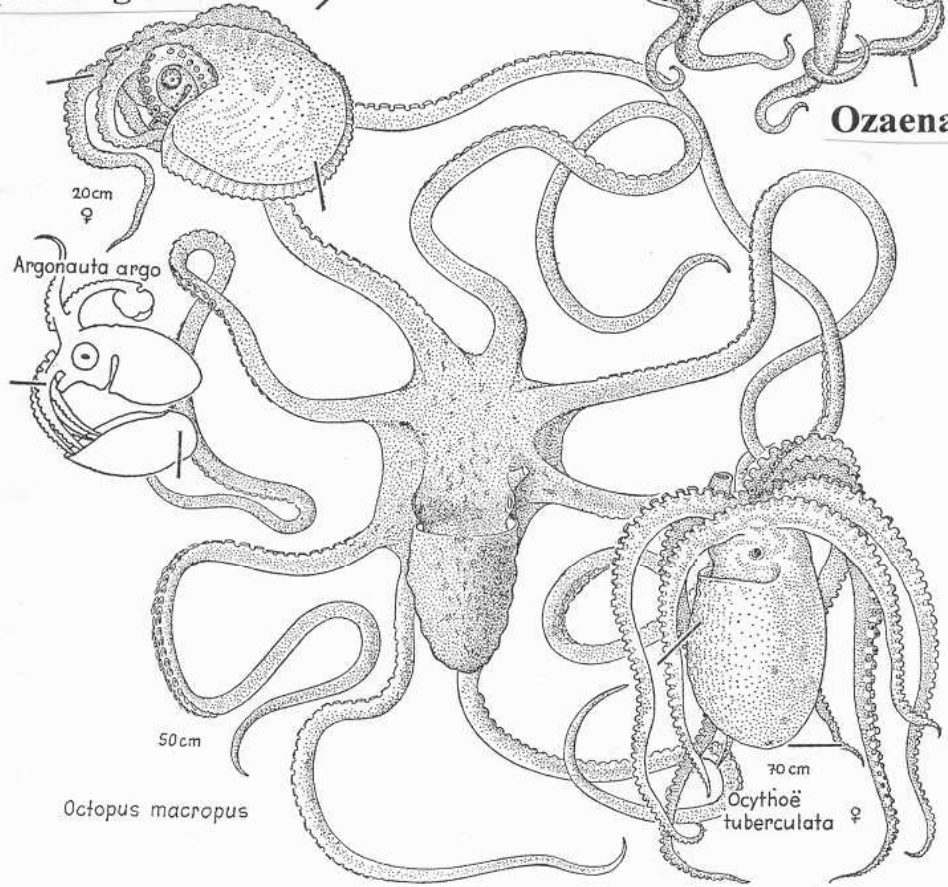
**S. orbignyana**

**Octopus vulgaris**



80 cm

**Ozaena moschata**



20 cm

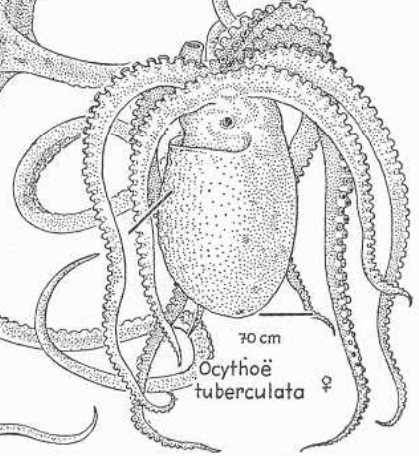
♀

**Argonauta argo**



50 cm

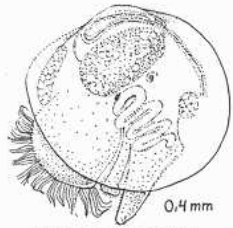
**Octopus macropus**



70 cm

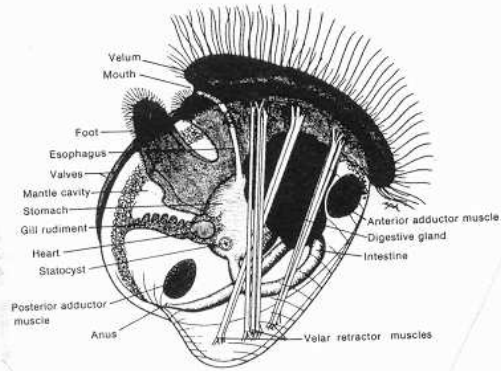
**Ocythoë tuberculata** ♀

**Octopus macropus**



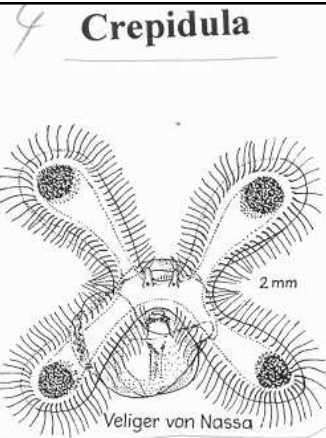
0,4 mm  
Veliger von Mytilus

**Mytilus**



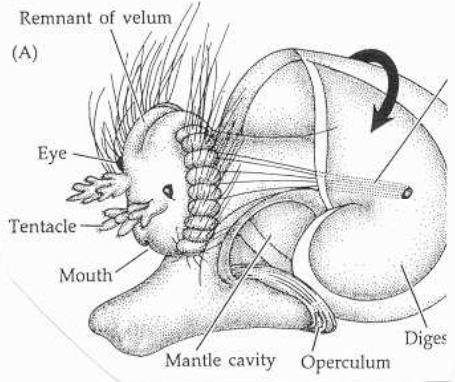
10-87 A fully developed veliger larva of an oyster. (After Galtsoff.)

**Ostrea**

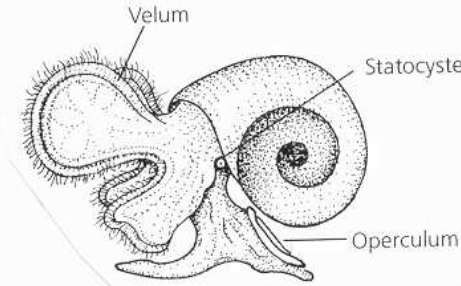


2 mm  
Veliger von Nassa

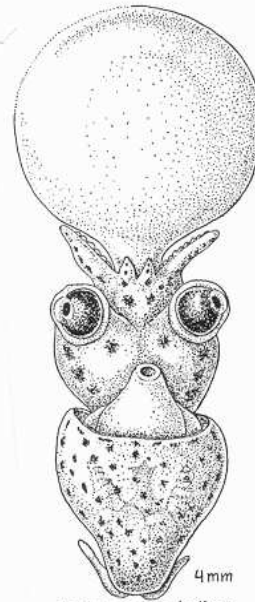
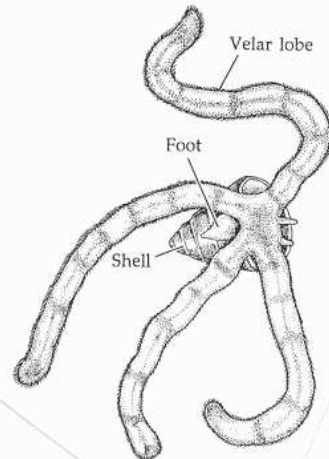
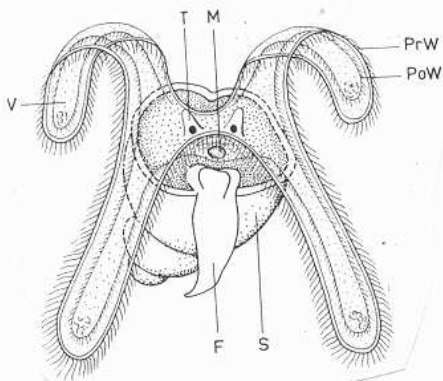
**Nassa**



**Haliotis**



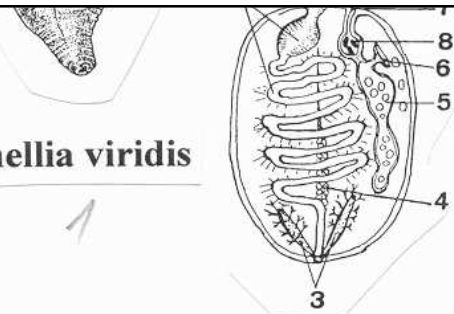
**Nassarius**



4 mm  
Embryo von Loligo

**Loligo**

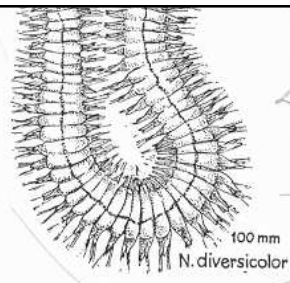
**Bonellia viridis**



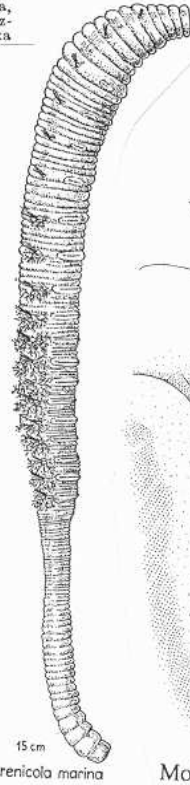
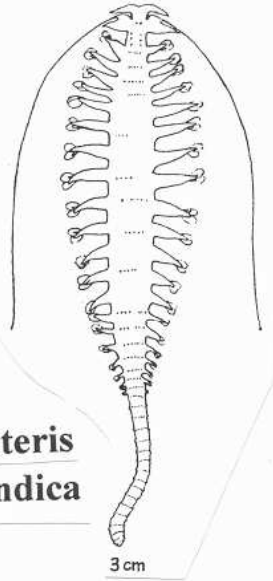
1 ústa na dně chobotu, 2 žaludek a střevo, 3 ledvinové trubice, 4 vaječník, 5 lichý gonodukt, 6 nálevka vedoucí do dělohy, 7 ústí gonoduktu s komůrkou, 8 samečkové v komůrce, 9 nervová páska, 10 metanephridium, 11 protonephridium, 12 chámové buňky v různém stupni zralosti, 13 chámový vak se spermatozoidy, 14 nálevka pro čerpání chámu do vaku.

**Nereis pelagica**

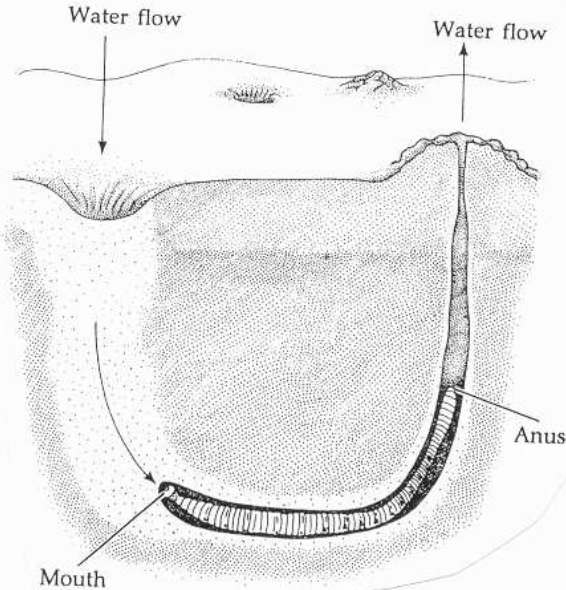
**N. diversicolor**



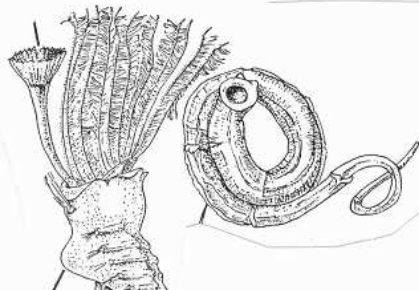
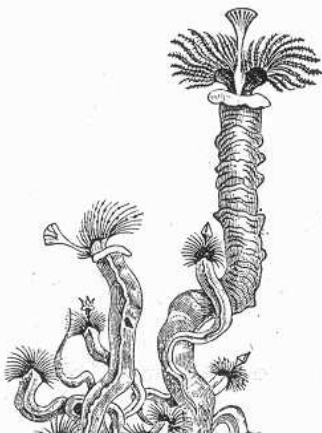
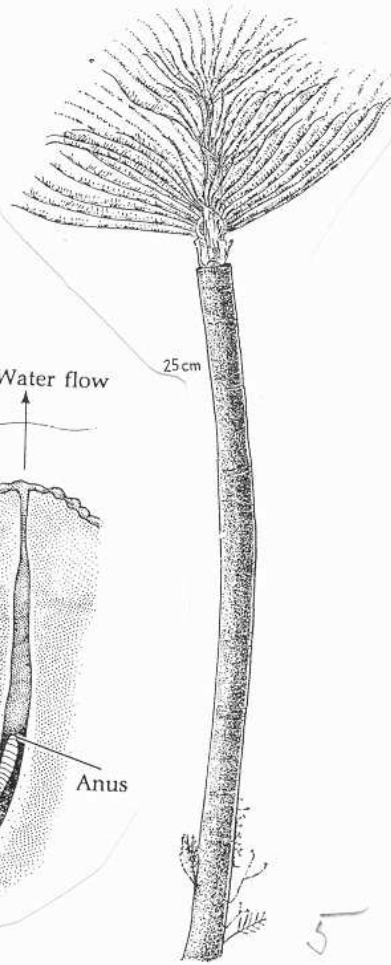
**Tomopteris helgolandica**



**Arenicola marina**



**Sabella spallanzanii**



**Spirochis pagenstecheri**