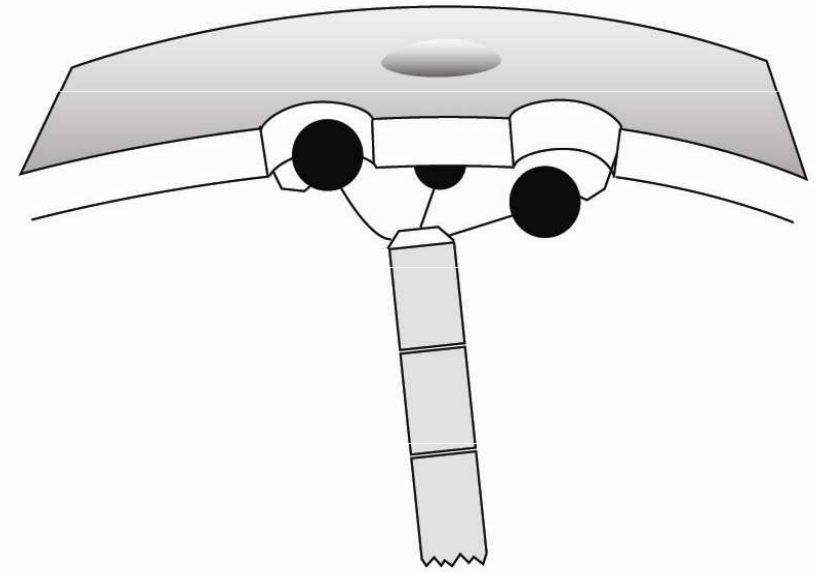
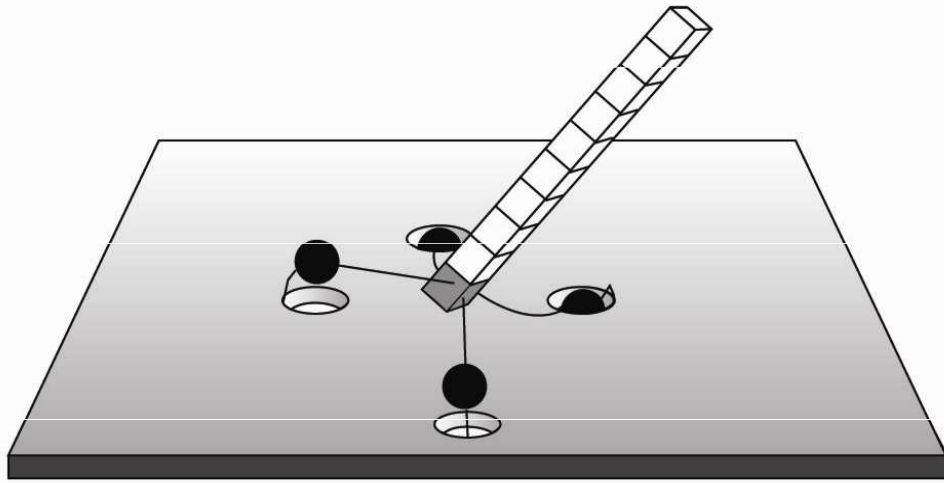


dorzální

ventrální

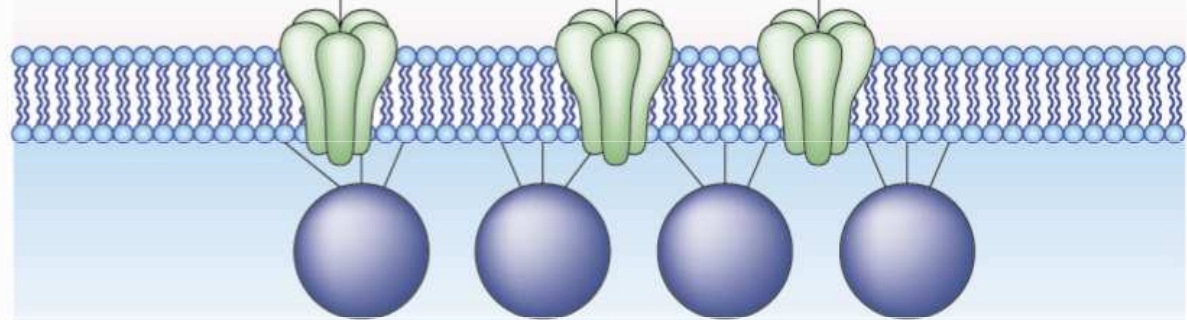


JD →

SP

$B = 0$

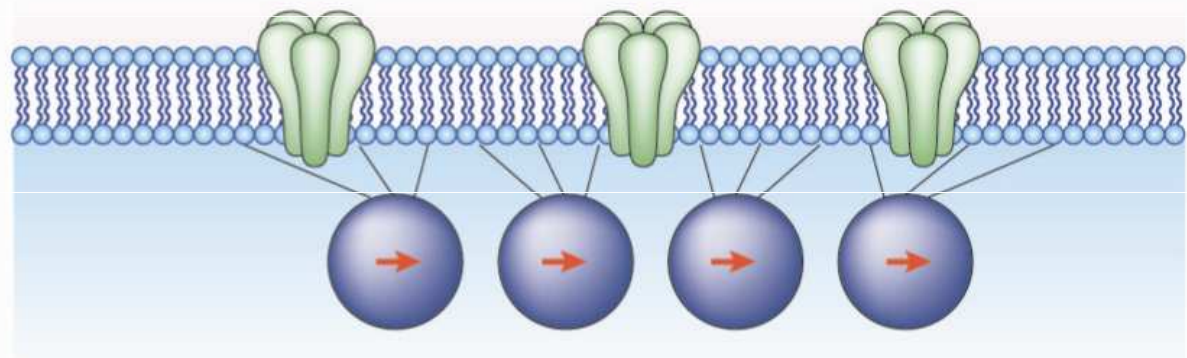
iontové kanály



shluky nanokrystalů magnetitu

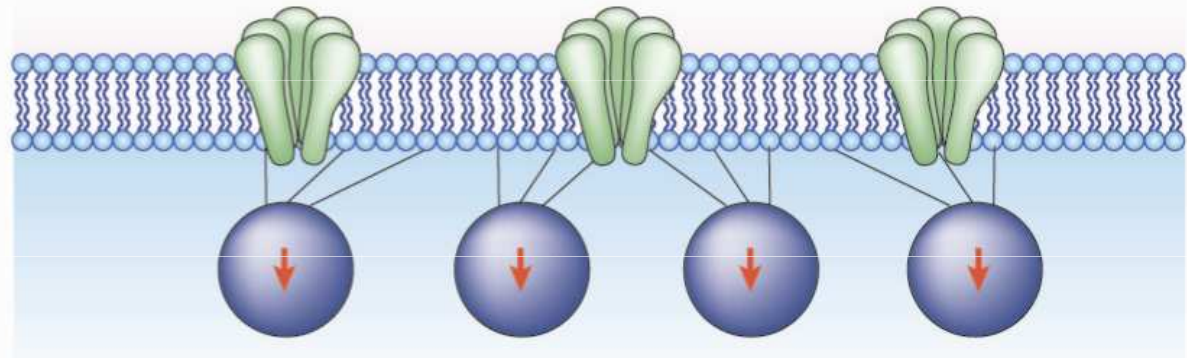
→

→

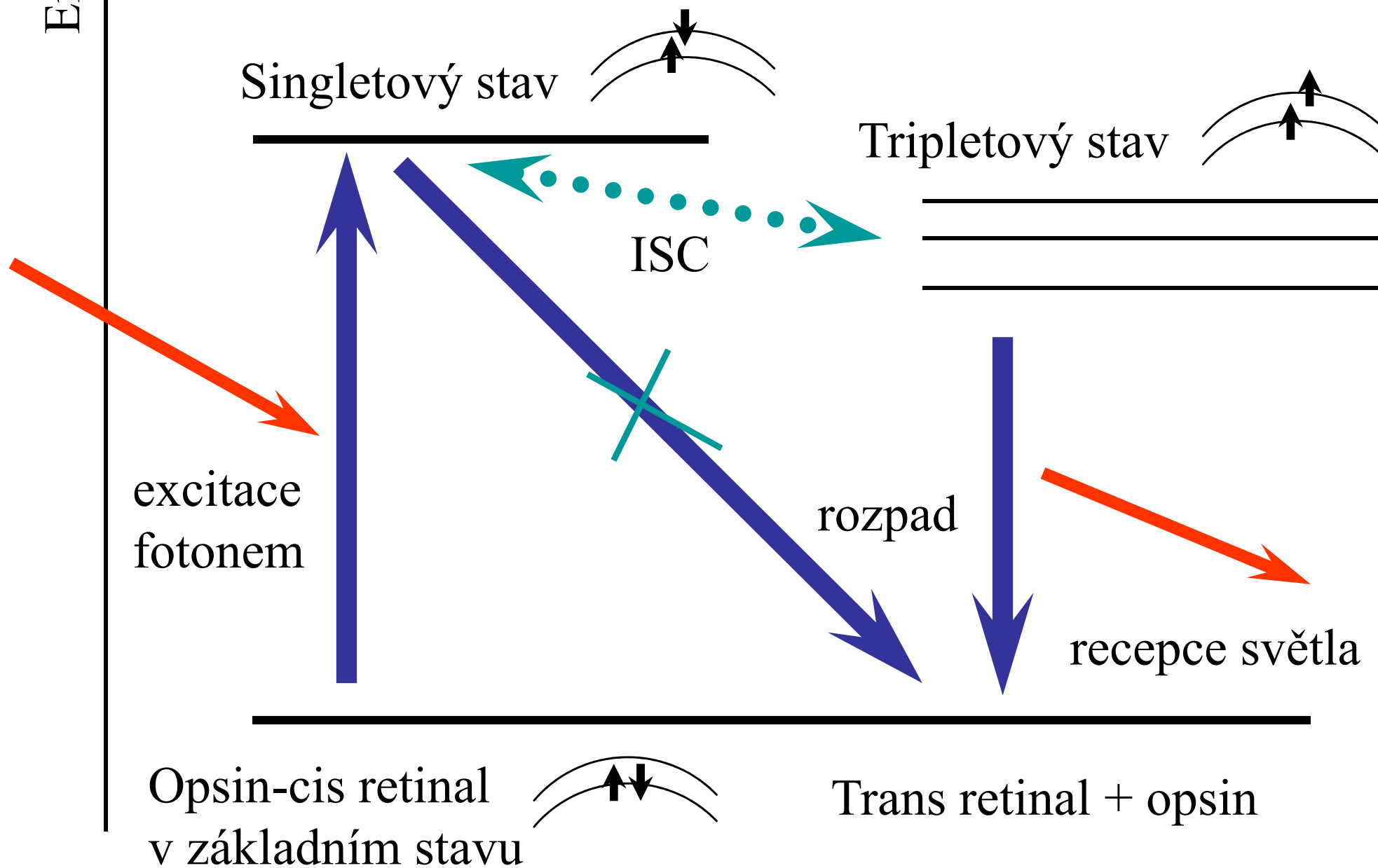


↓

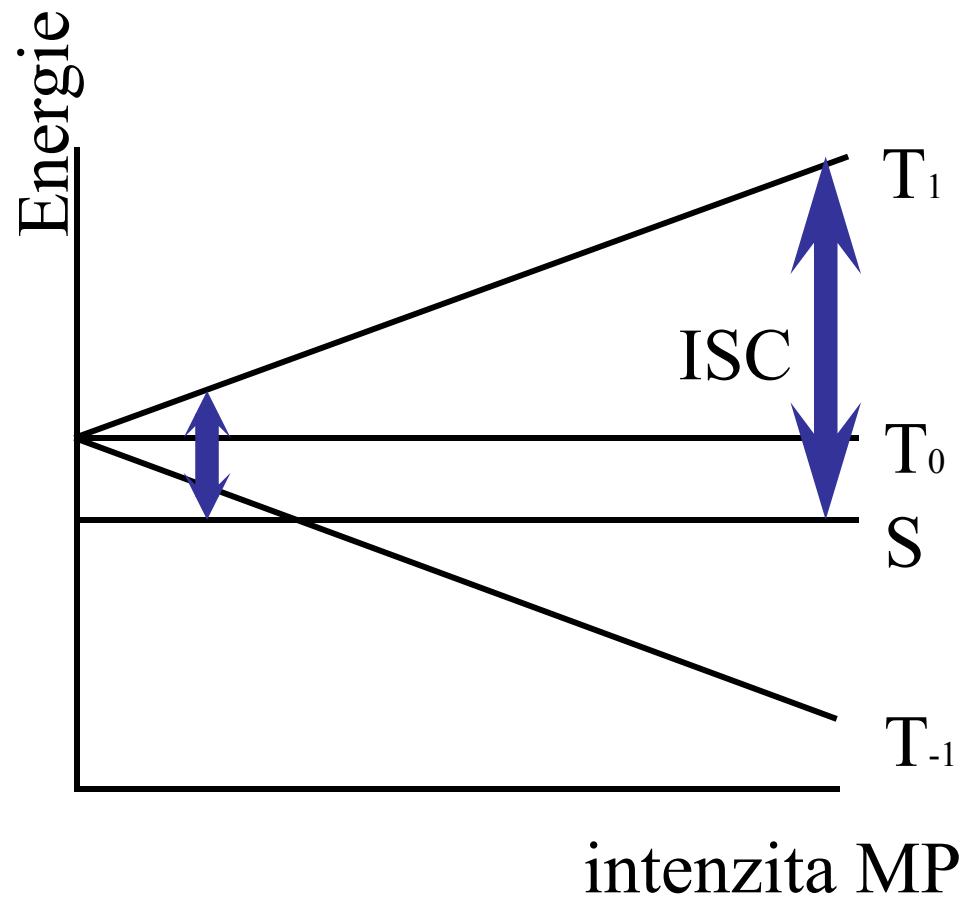
↓



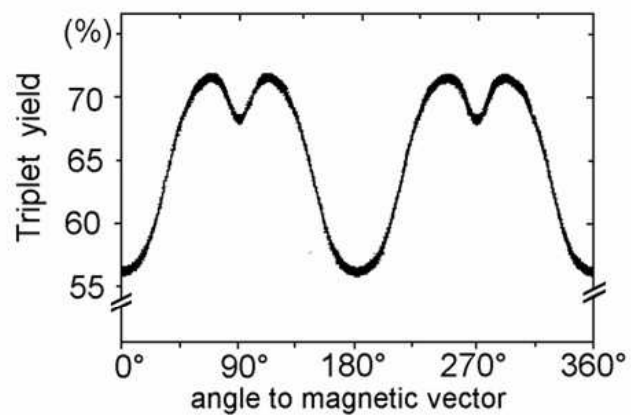
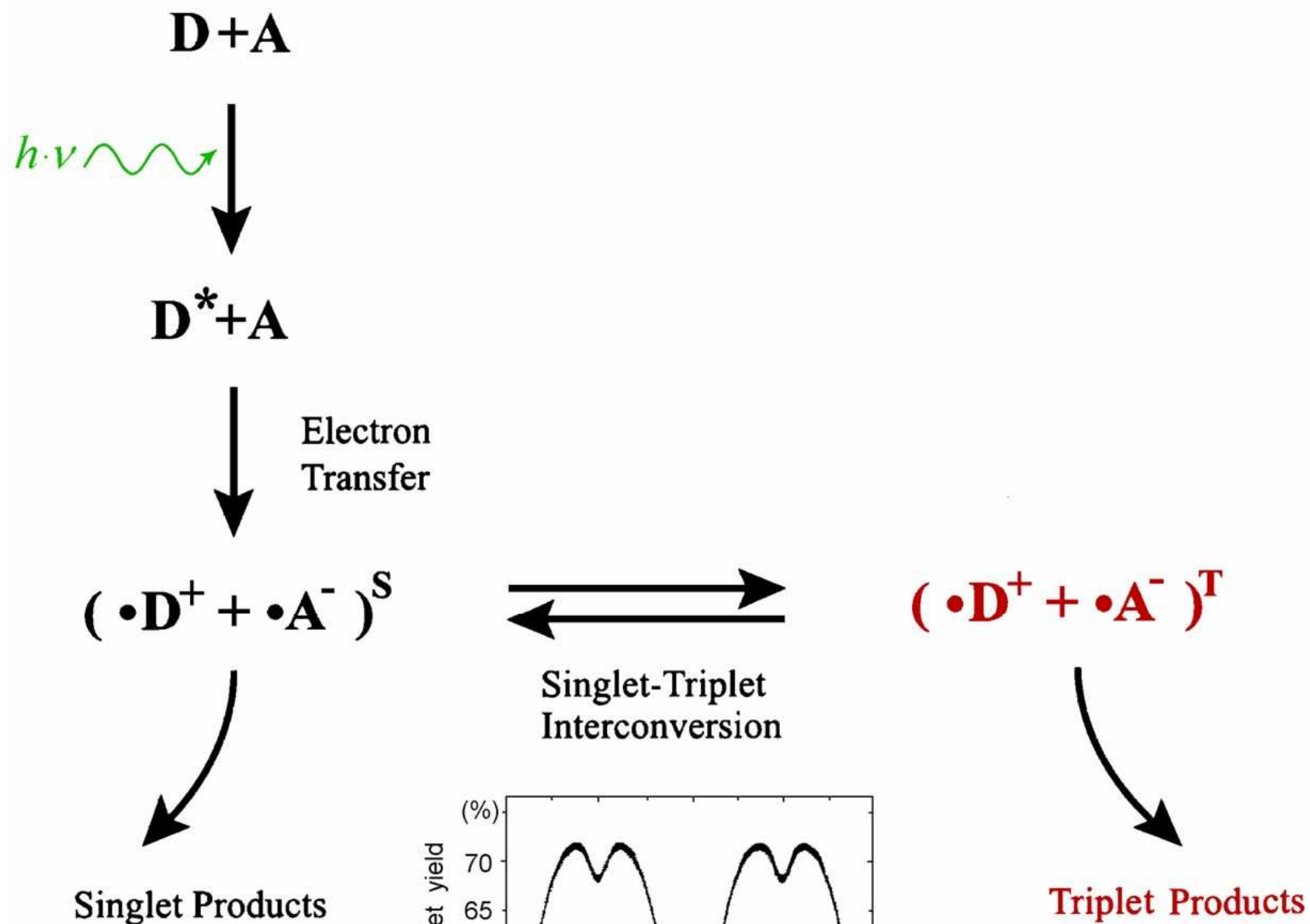
Energie

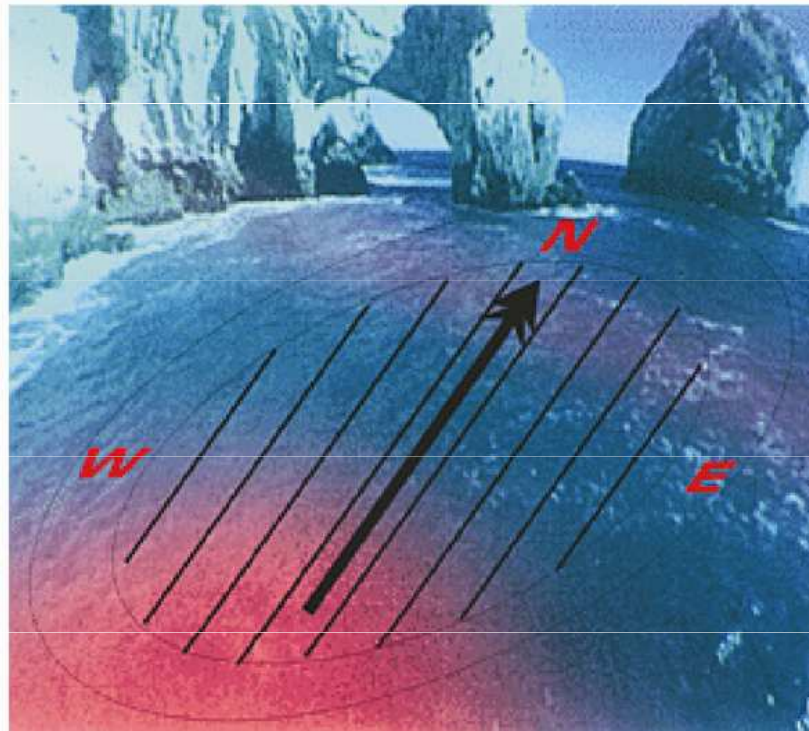
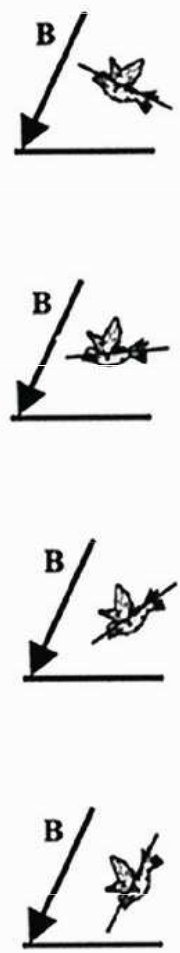
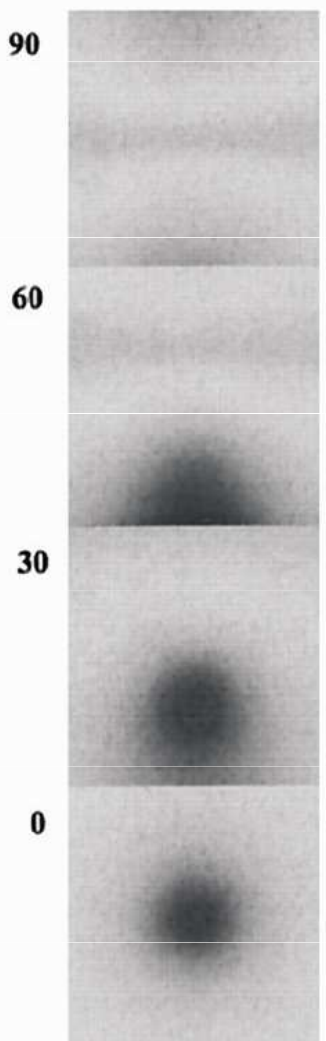
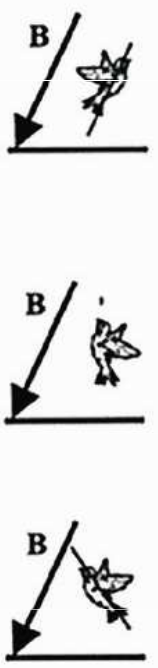
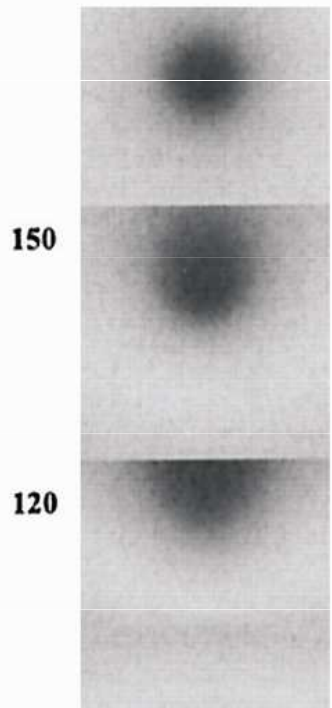
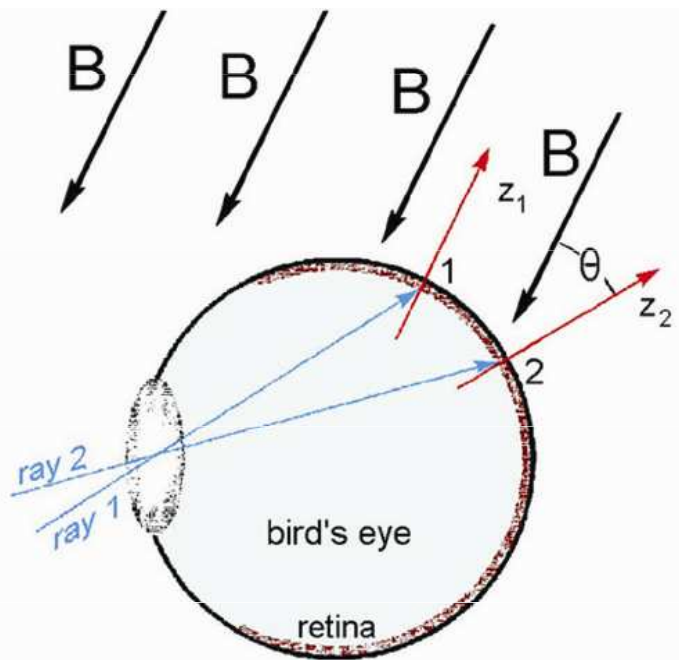


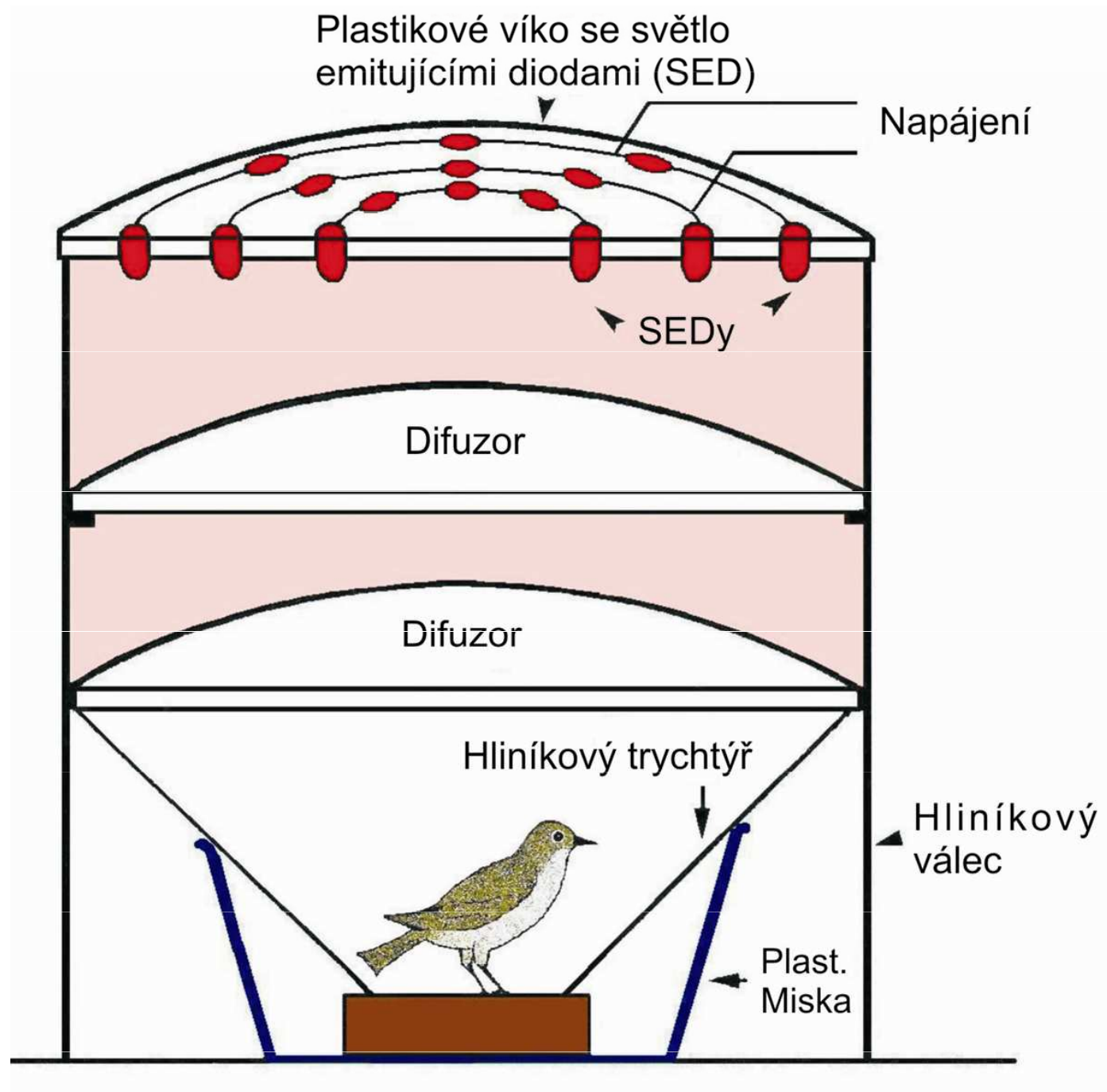
MP štěpí tripletní stavy a mění pravděpodobnost přeskoků



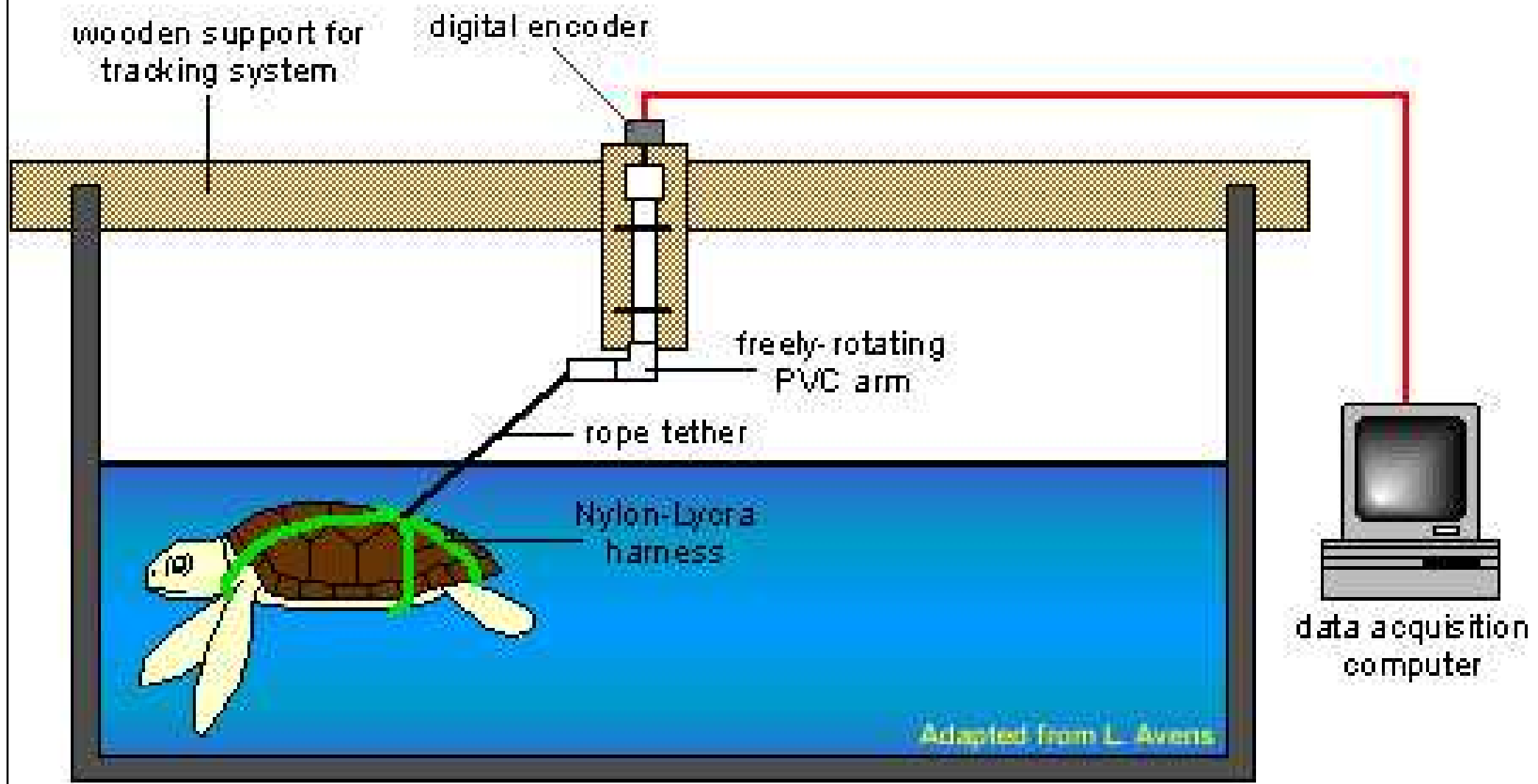












wooden support for tracking system

digital encoder

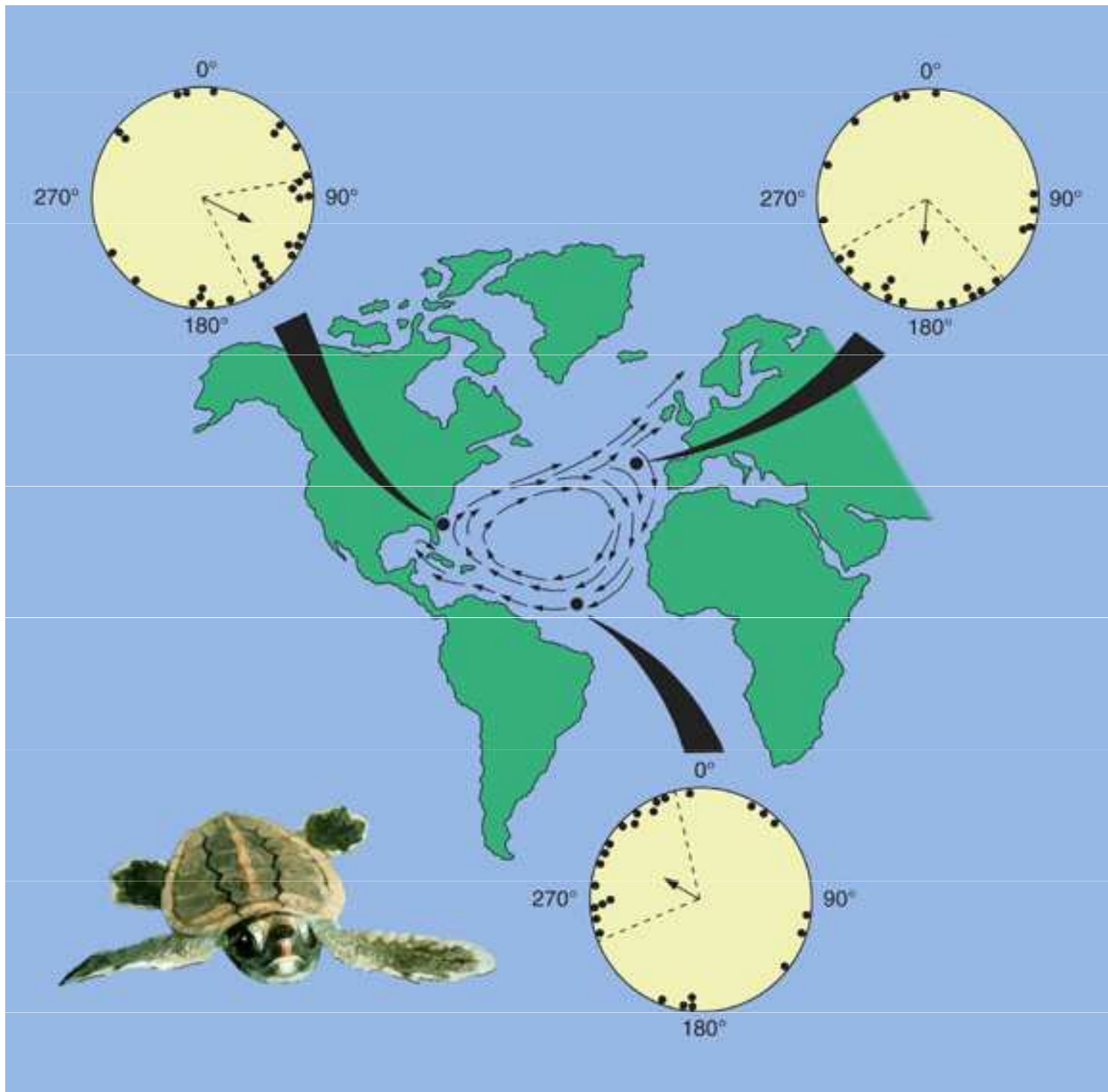
freely-rotating PVC arm

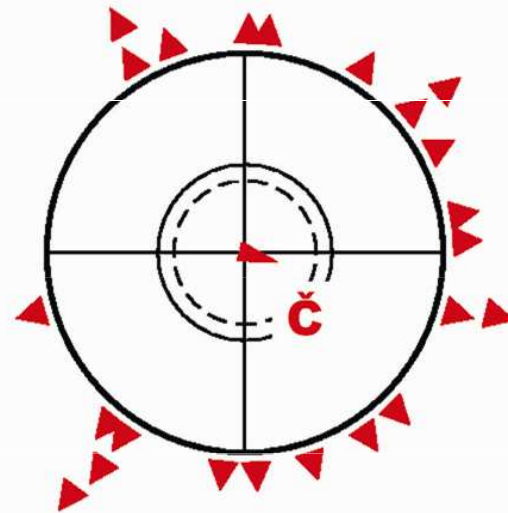
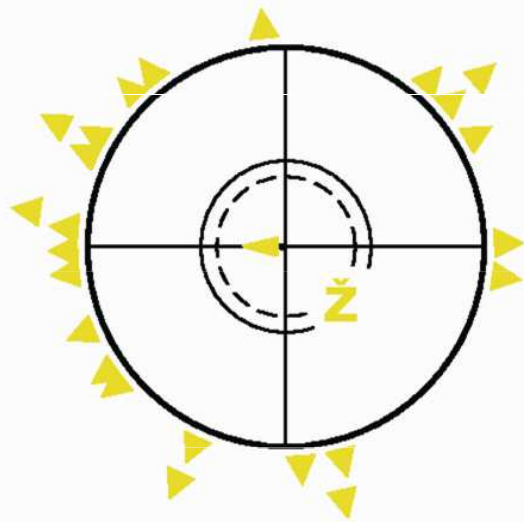
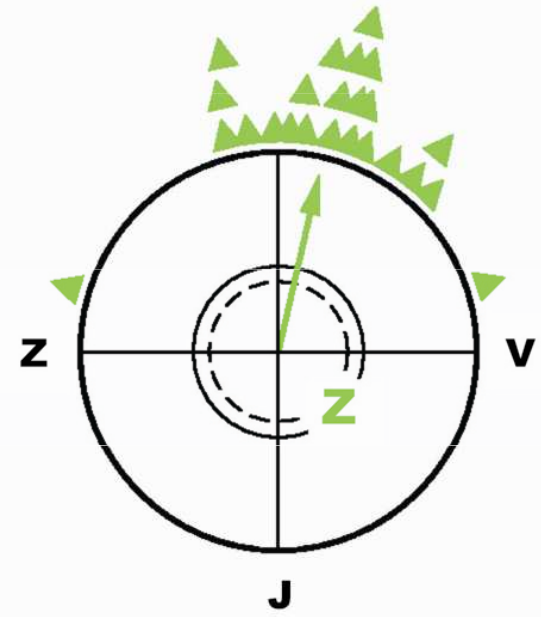
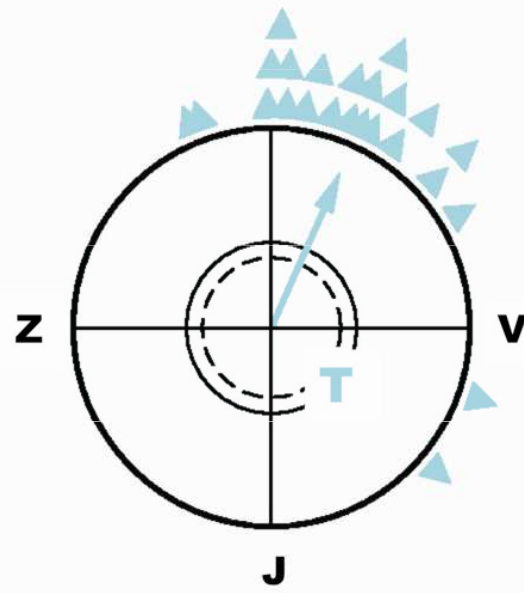
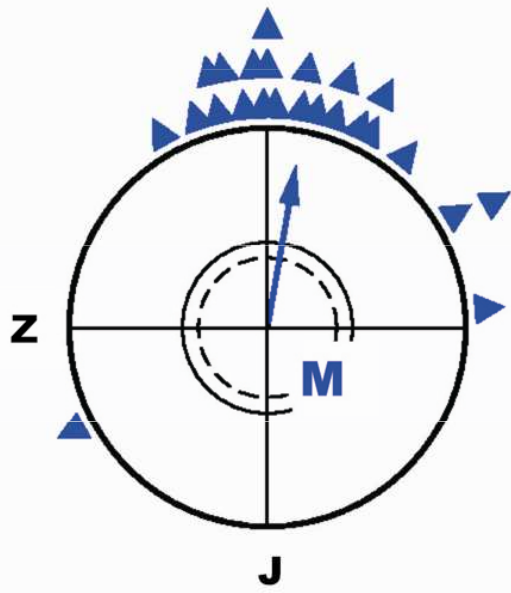
rope tether

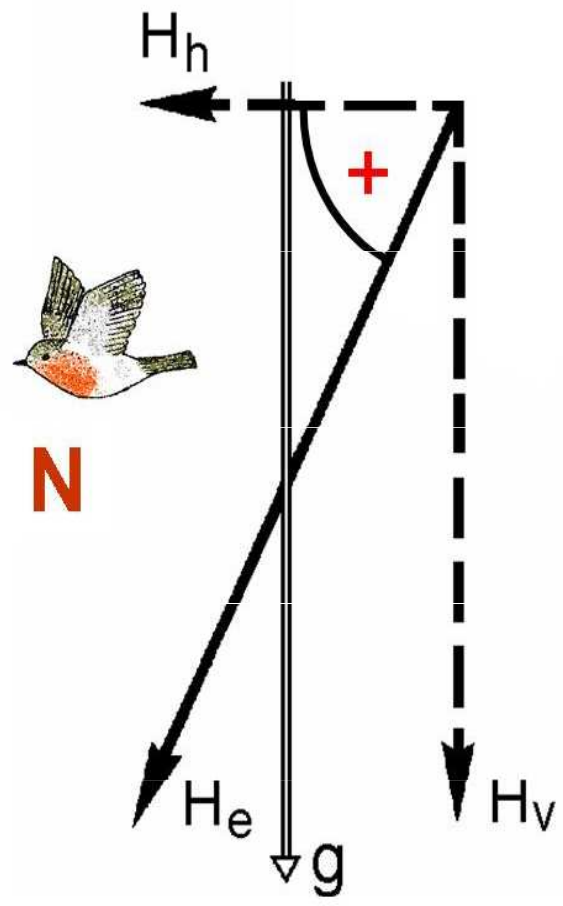
Nylon-Lycra harness

data acquisition computer

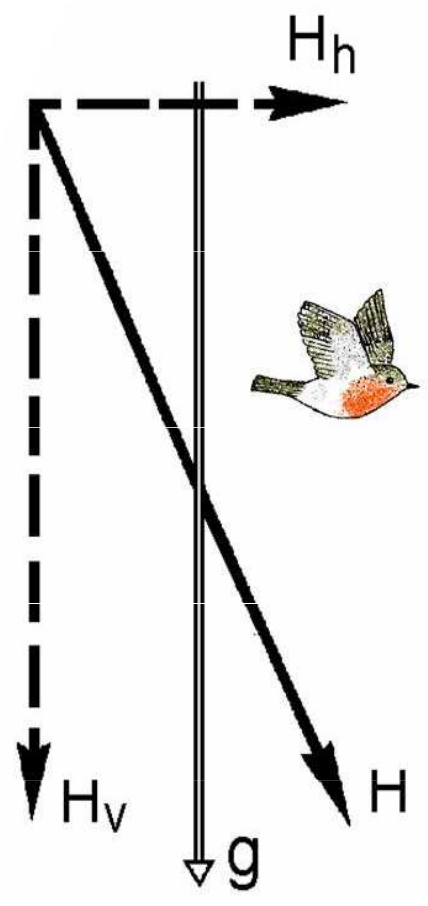
Adapted from L. Avens



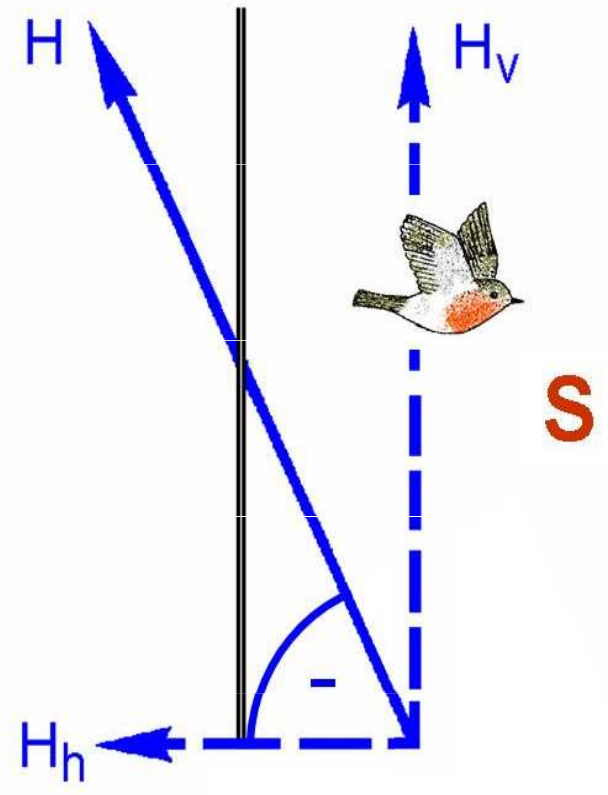




A) Místní geomagnetické pole

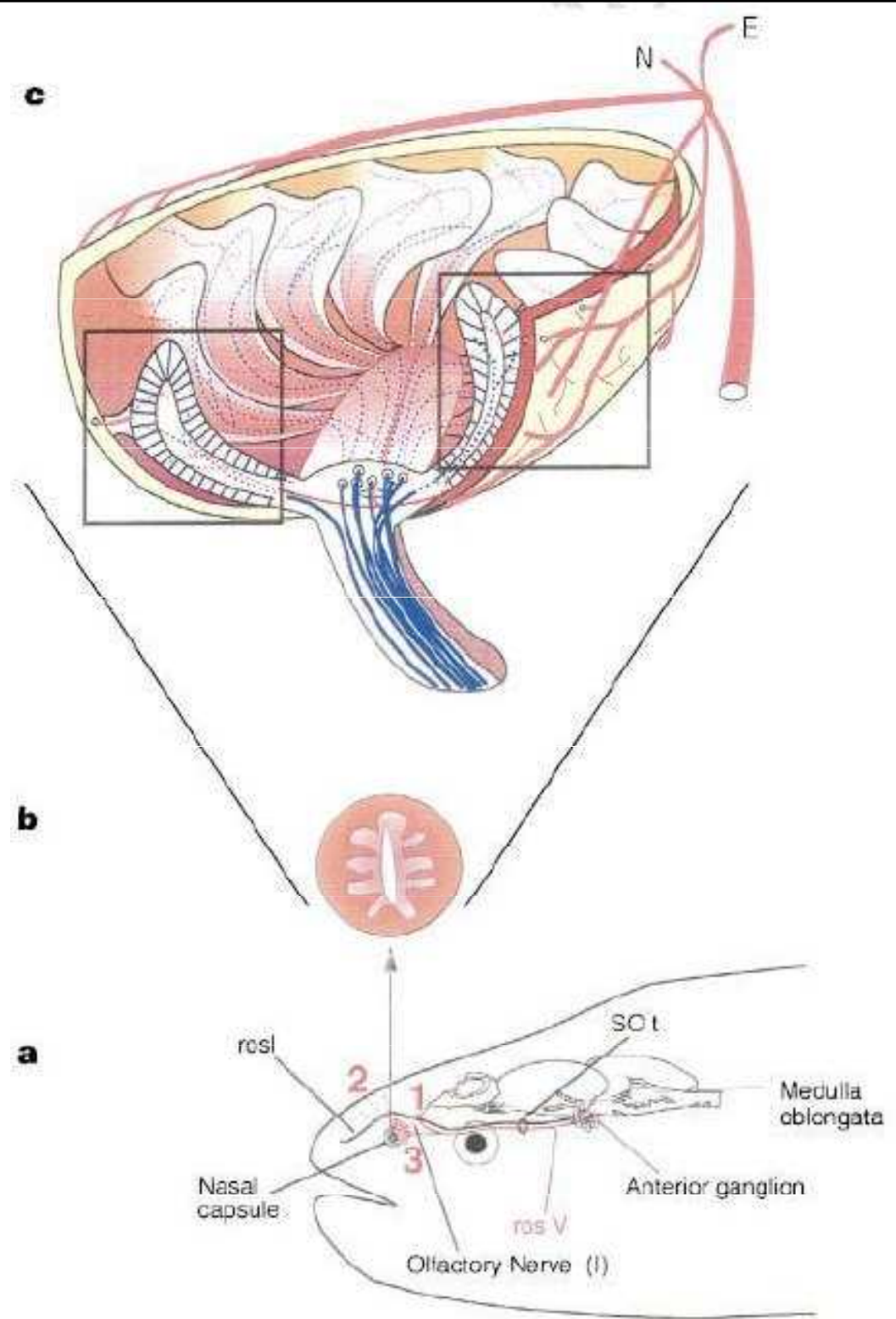


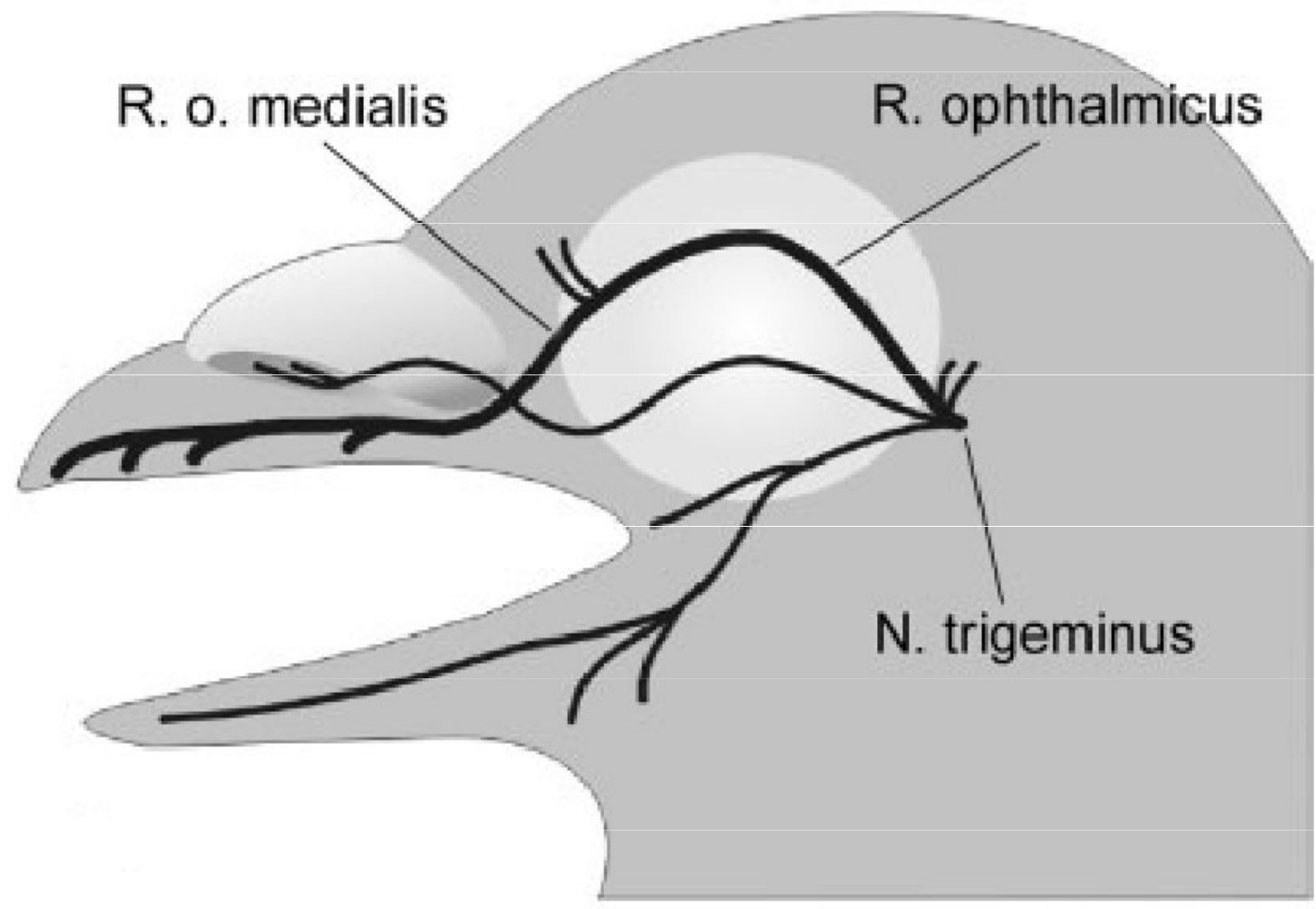
B) Horizontální složka otočena



C) Vertikální složka otočena



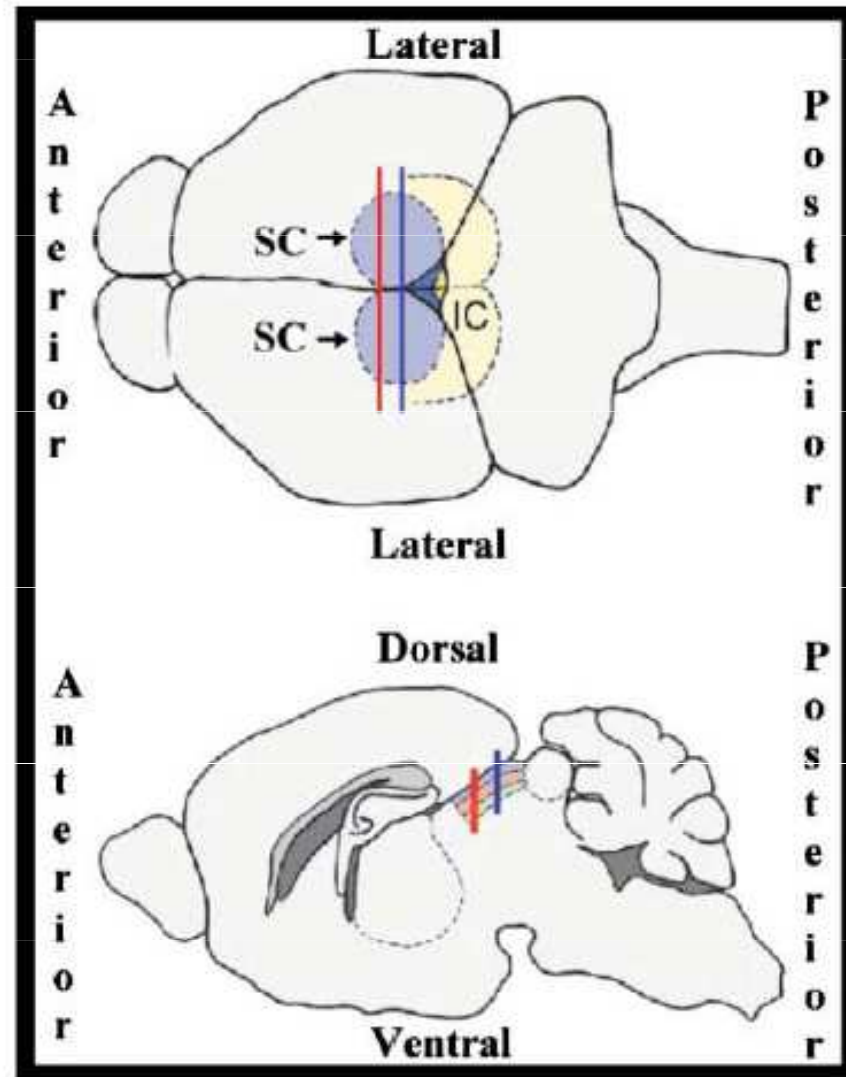
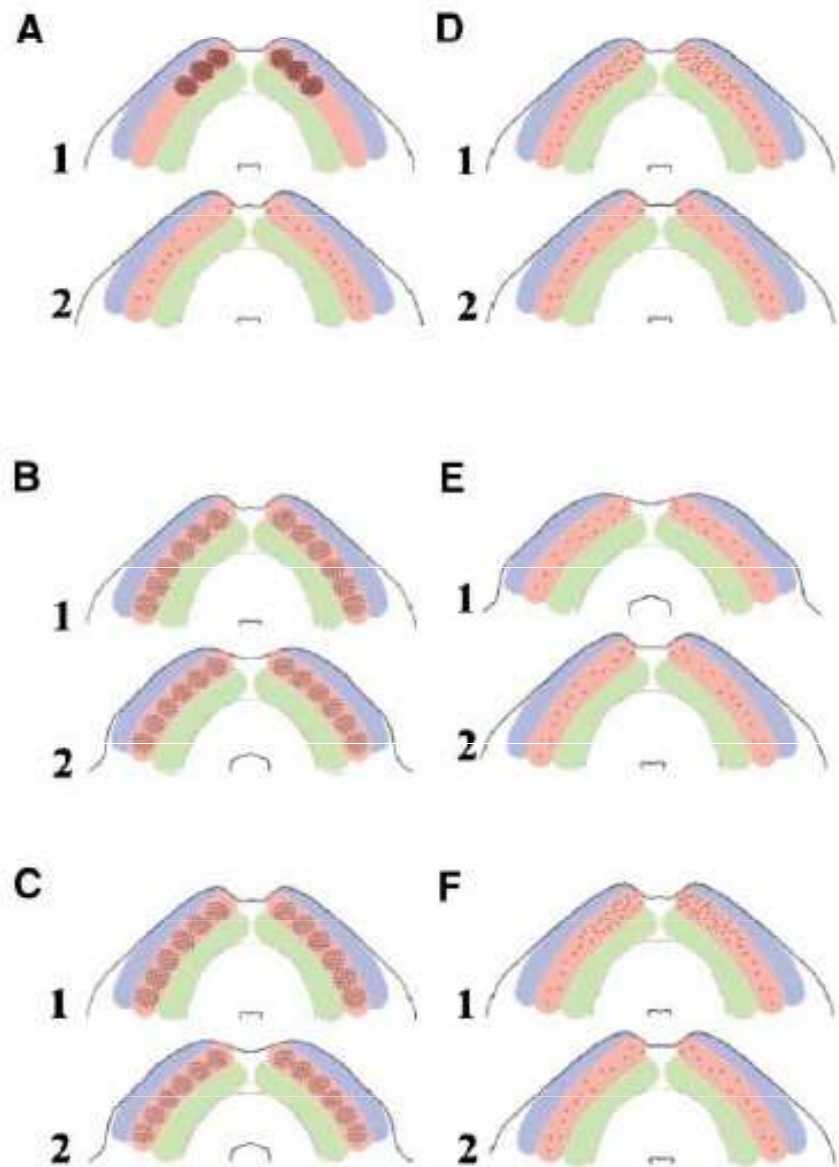




R. o. medialis

R. ophthalmicus

N. trigeminus



SC Layers:

- InGo
- InGi
- DpG

Activated neurons

- Section 1
- Section 2