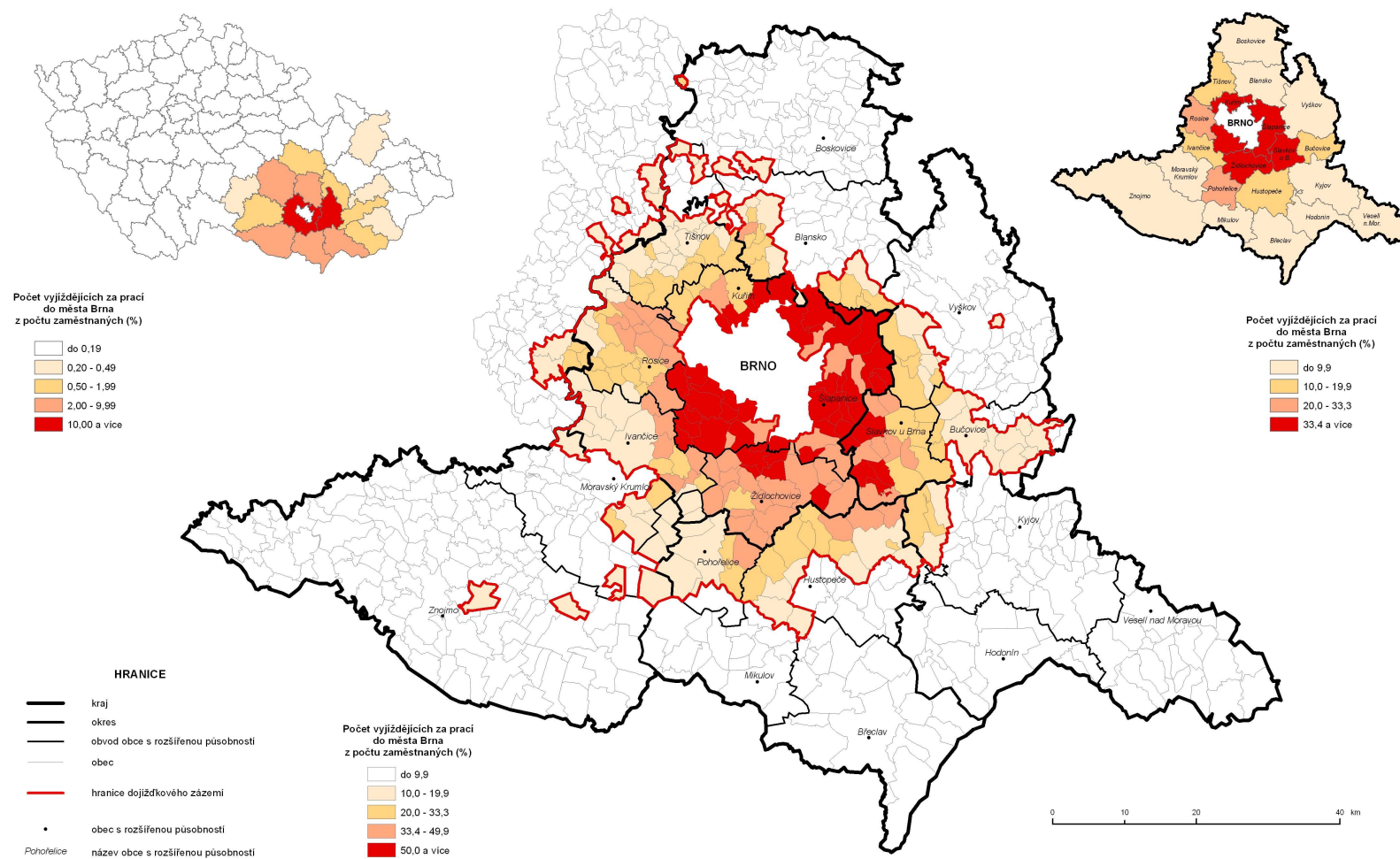


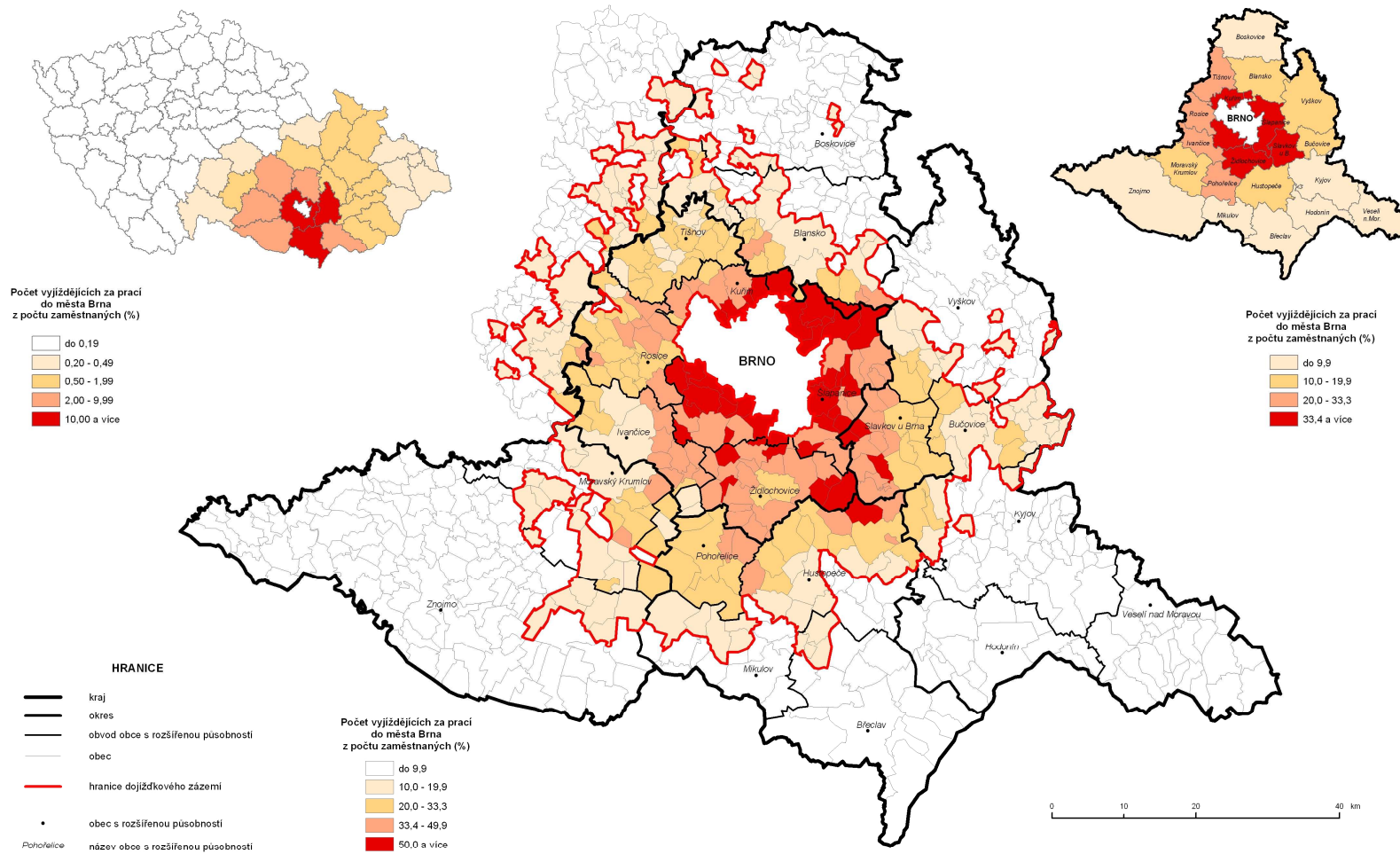
# Dojíždka za prací do města Brna (3.3.1991)

Příloha 5.1.

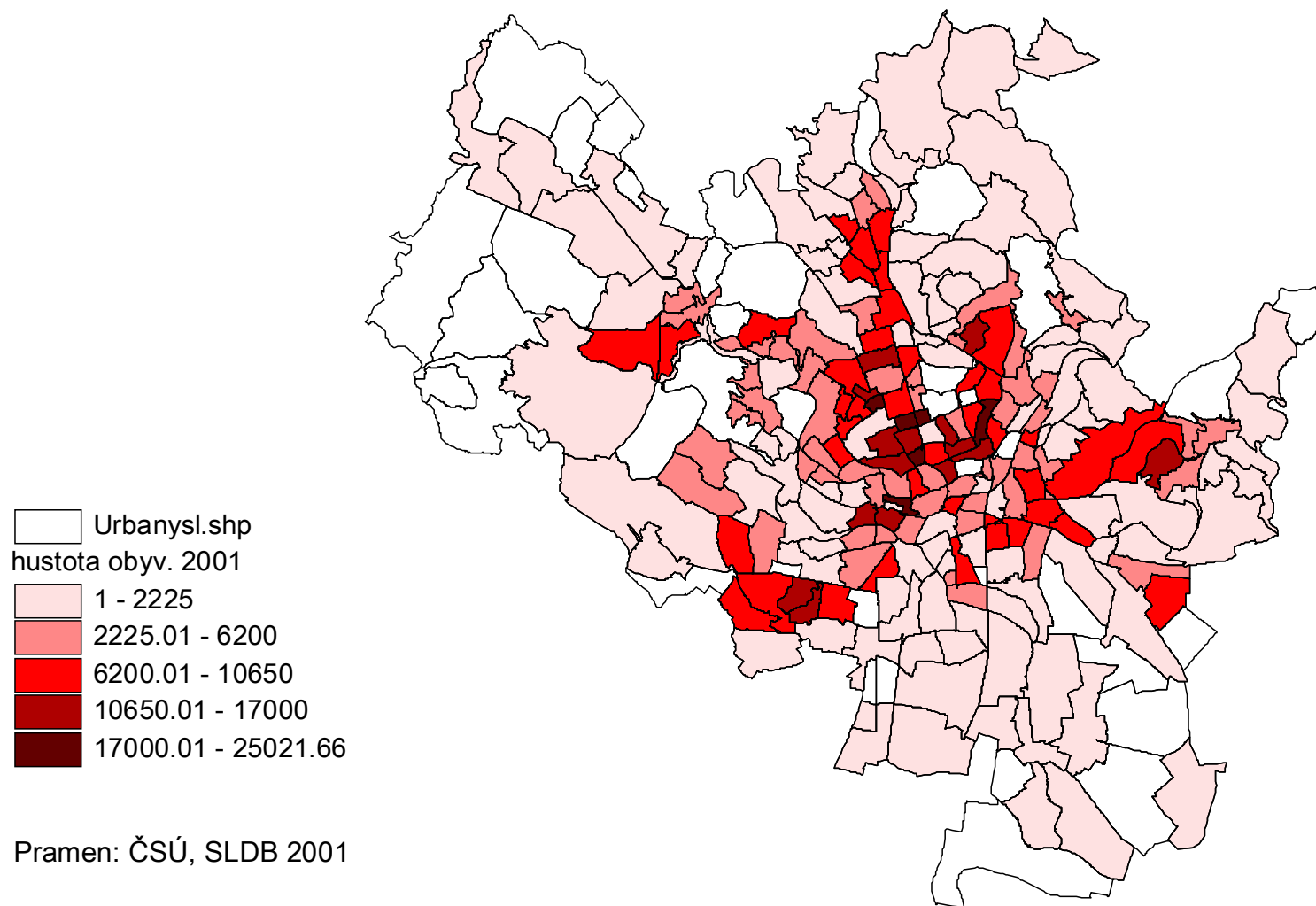


# Dojíždka za prací do města Brna (1.3.2001)

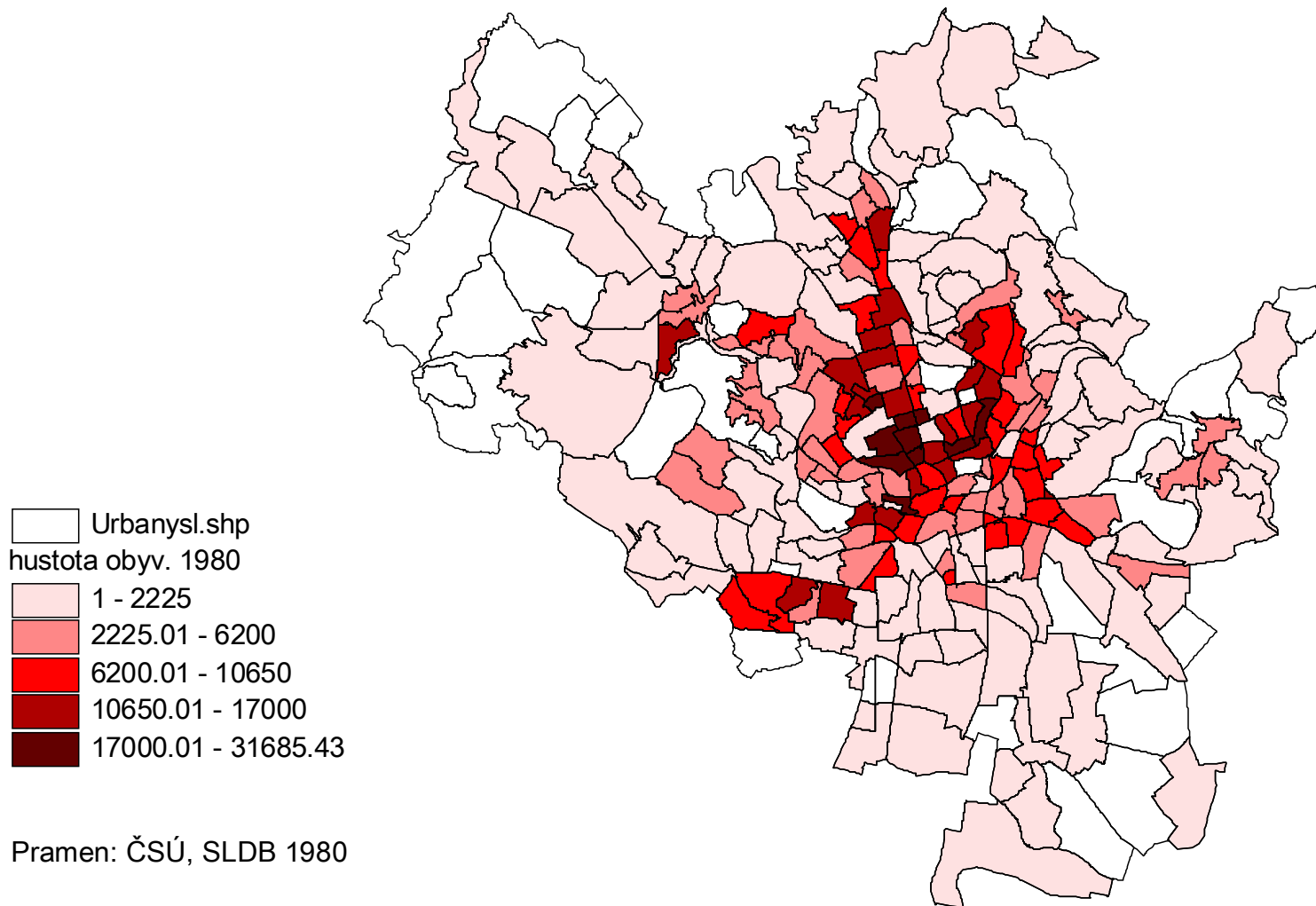
Příloha 5.2.



# Hustota obyvatelstva, 2001



# Hustota obyvateľstva, 1980

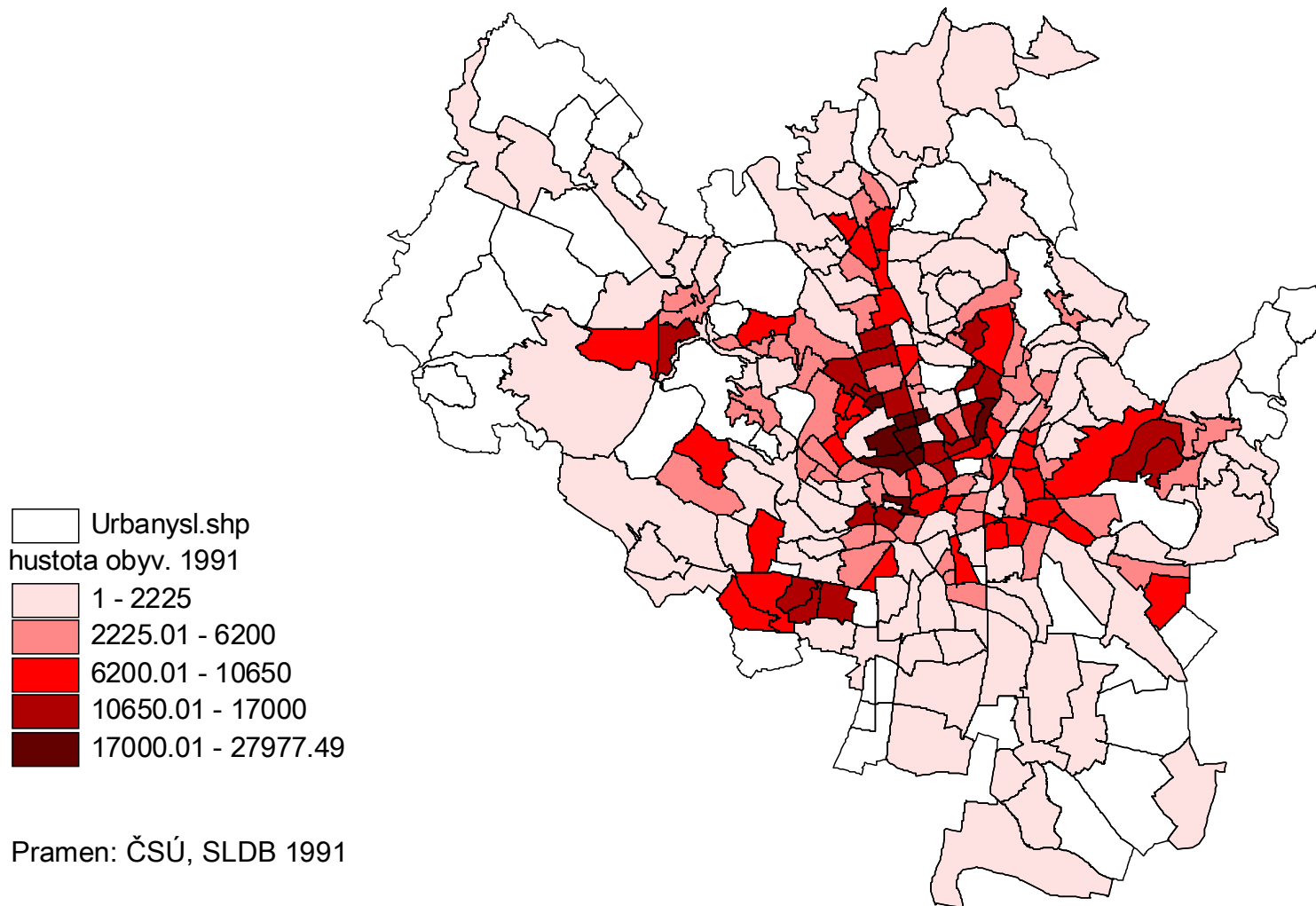


Urbanysl.shp  
hustota obyv. 1980

1 - 2225
2225.01 - 6200
6200.01 - 10650
10650.01 - 17000
17000.01 - 31685.43

Pramen: ČSÚ, SLDB 1980

# H u s t o t a o b y v a t e l s t v a , 1 9 9 1

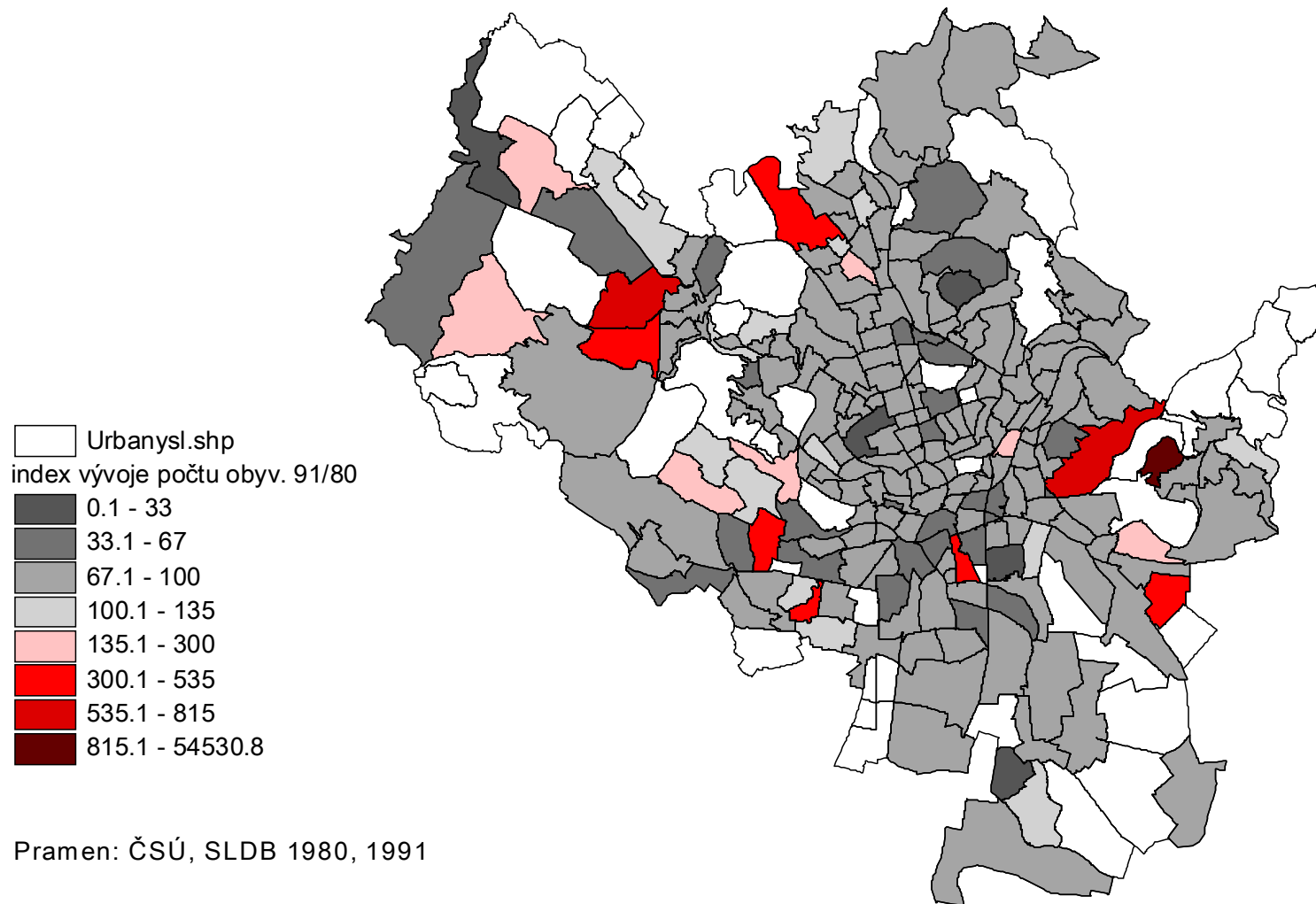


Urbanysl.shp  
hustota obyv. 1991

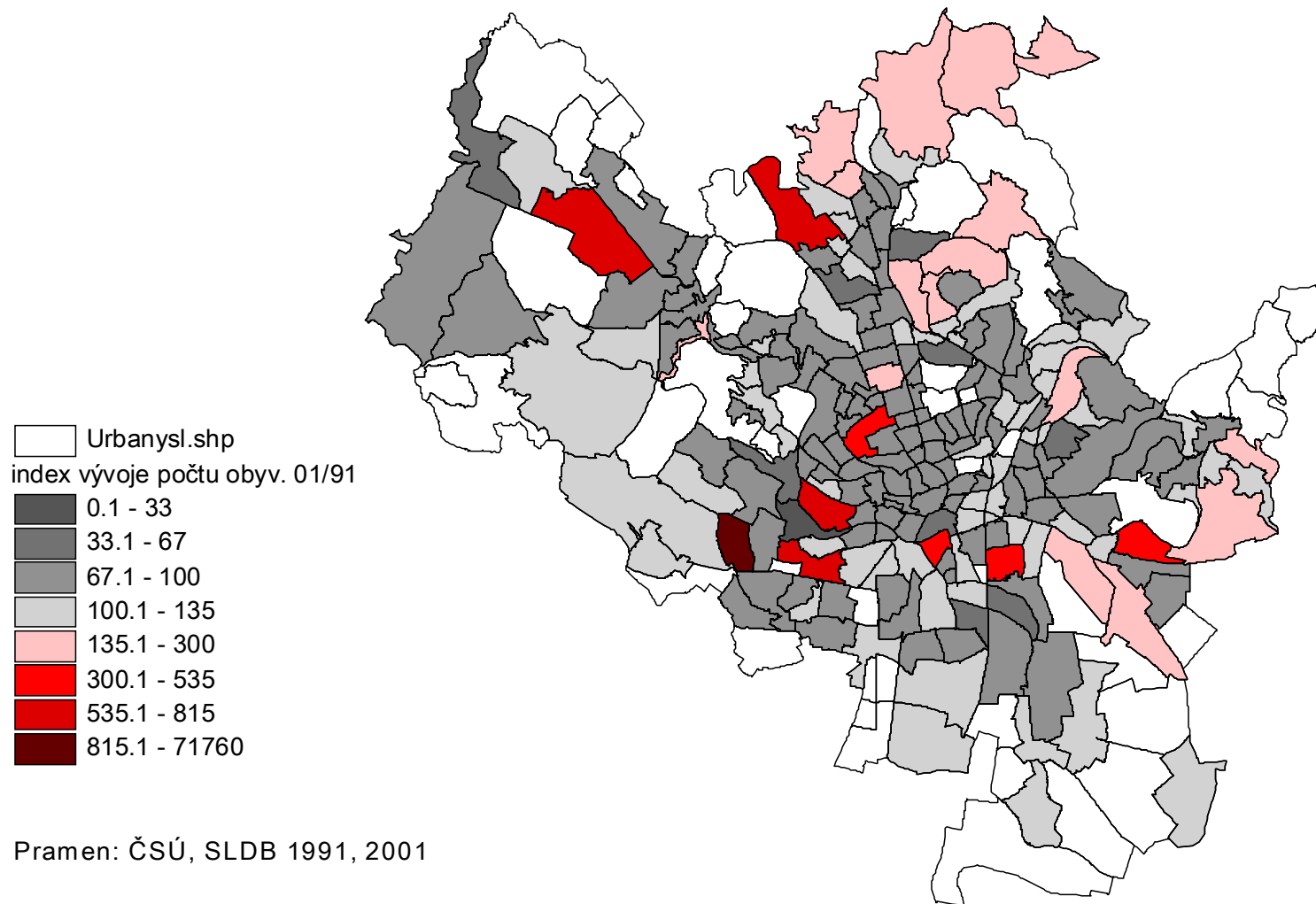
Lightest Pink	1 - 2225
Light Pink	2225.01 - 6200
Red	6200.01 - 10650
Dark Red	10650.01 - 17000
Darkest Red	17000.01 - 27977.49

Pramen: ČSÚ, SLDB 1991

Index vývoje počtu obyvatel, 1980 - 1991 (1980 = 100 % )

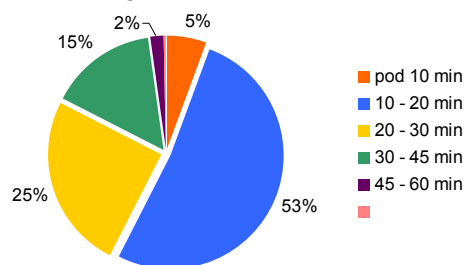


Index vývoje počtu obyvatel, 1991 - 2001 (1991 = 100 % )

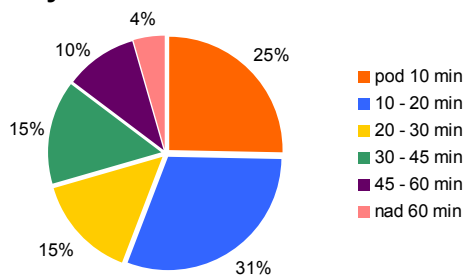


## Jak dlouho Vám trvá cesta z místa bydliště do hypermarketu?

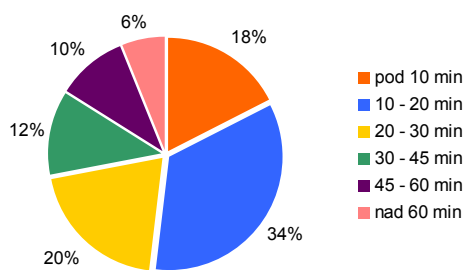
### Tesco Dornych



### OBI Bystrc

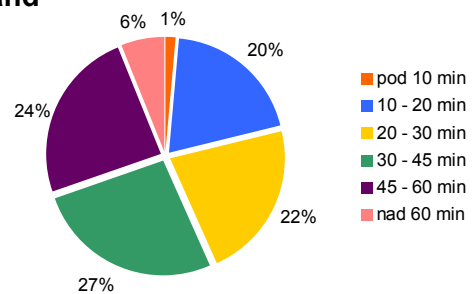


### Globus

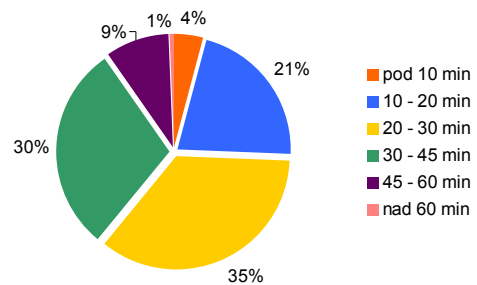




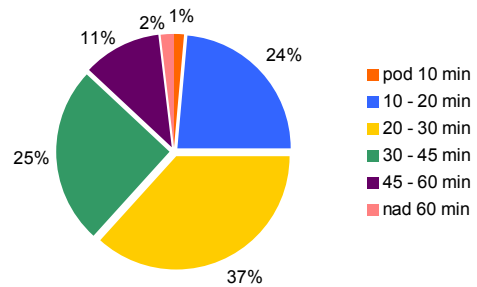
### Kaufland



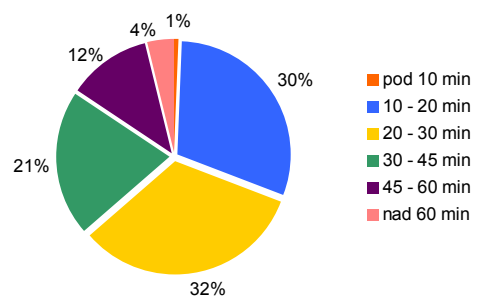
### Interspar Vídeňská



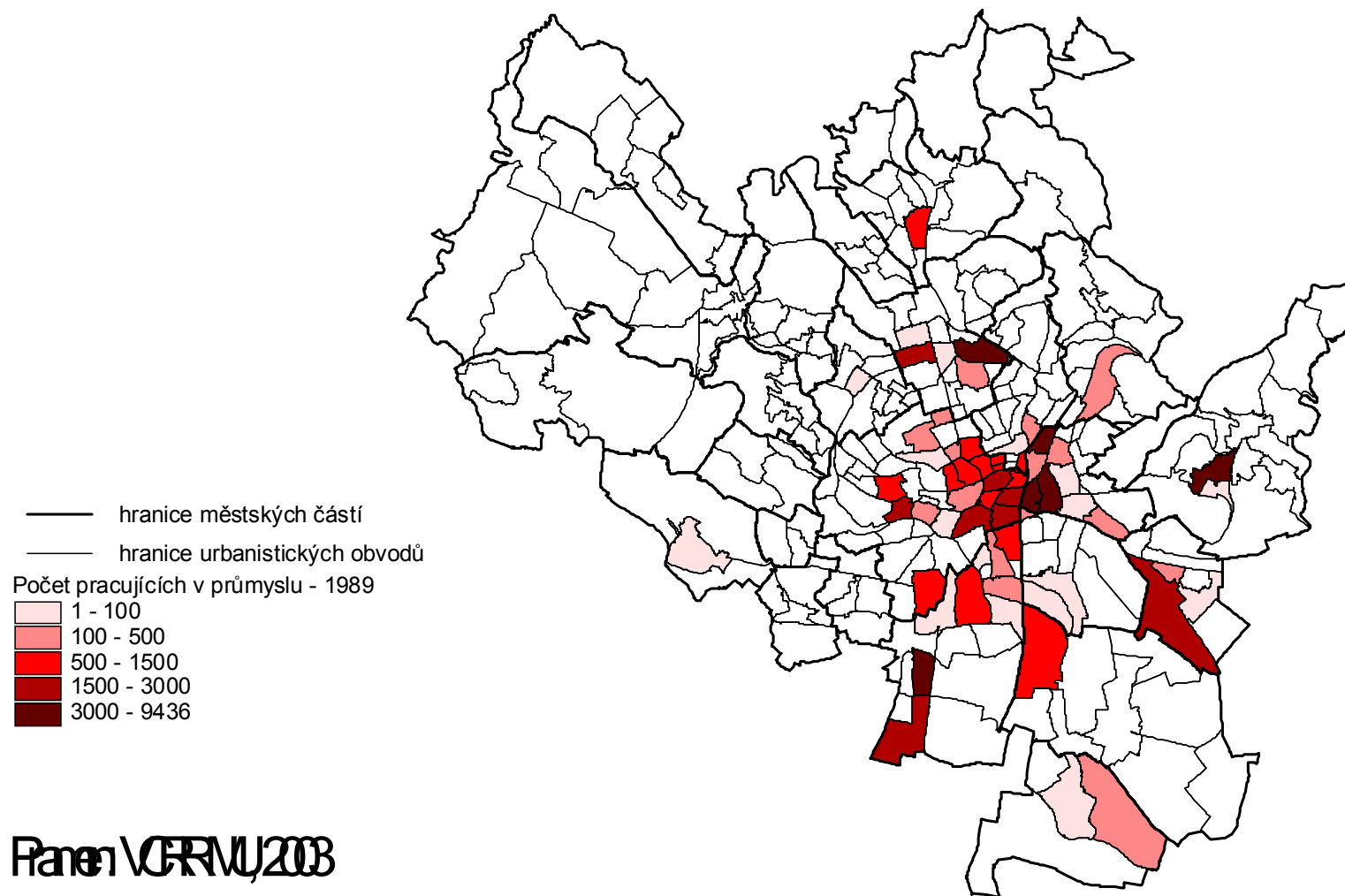
### Carrefour Vídeňská



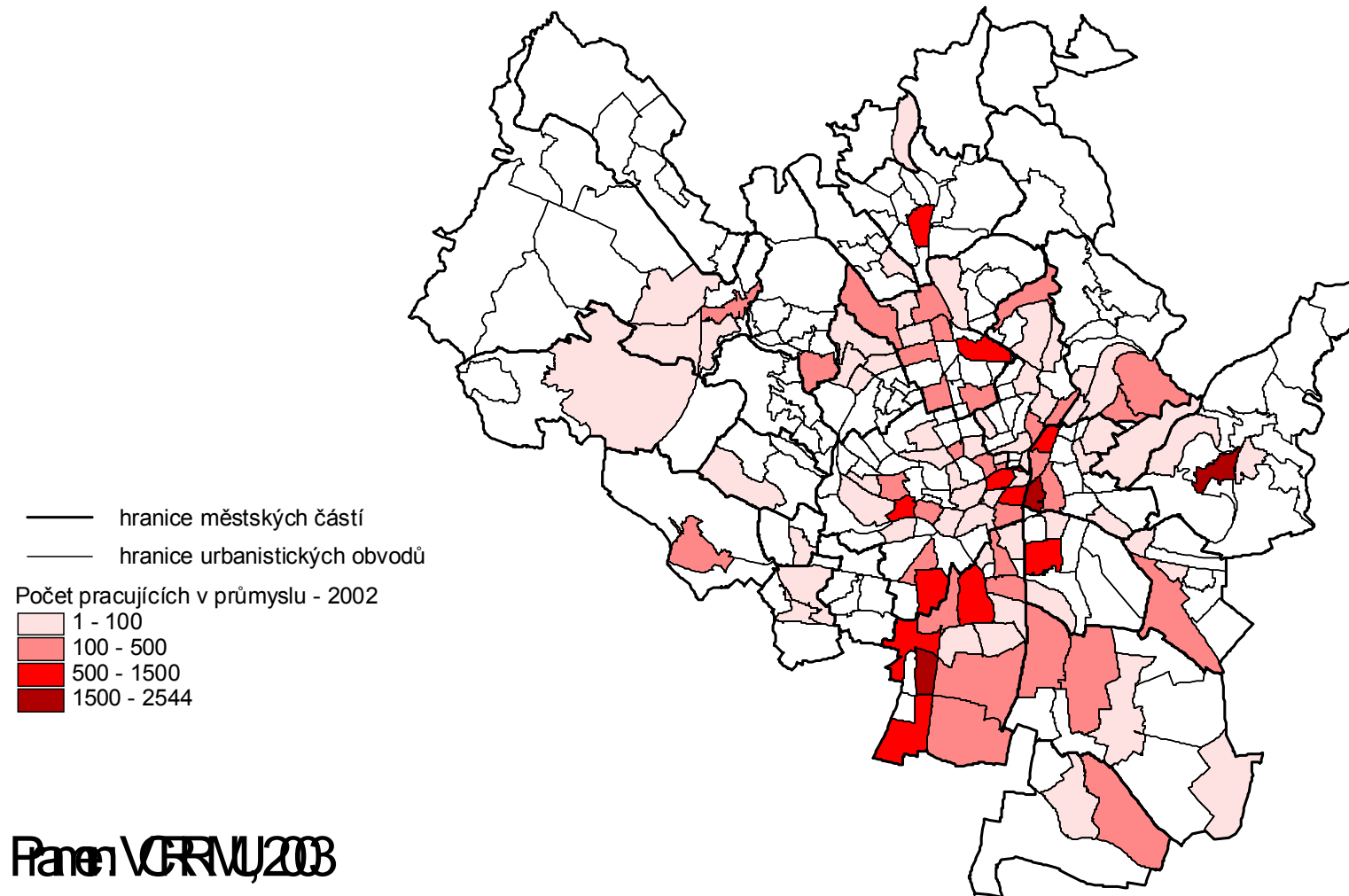
## Olympia Modřice



# Počet pracujících v průmyslu, 1989



# Počet pracujících v průmyslu, 2002



# Počet pracujících ve vybraných odvětvích sektoru služeb, 2002

