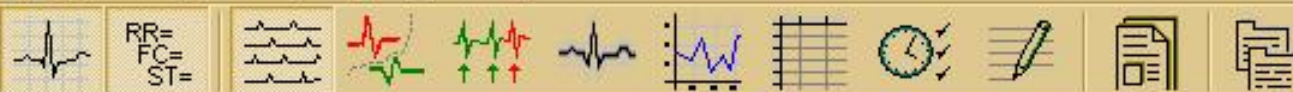


Kap. 11 Elektro Kardio Grafie





Ver canal | Ir a horario | Lineas 5 | Segs/linea 10 | Factor de amplitud



Latido [id=79]
 Tipo= Indeterminado
 Hora= 00:00:36
 RR= 0.46 seg.
 RR prom.= 0.46 seg.
 FC= 131 bpm
 [1]
 Onda Q ausente
 Derivada ST 0.0

Ver canales ... | Ir a horario | Escala (mV/cm) | Anotaciones ECG filtrado Datos etapa << >> Evento...



Bruce
 Transcurrido 00:36
1 - Reposo
 00:36 / 00:43

Velocidad 0.0
 Inclinación 0.0
 Carga —

FC **130**
 Max. 182
0%
 Submax. 171
0%

Vznik napětí mezi podrážděnou a klidovou tkání

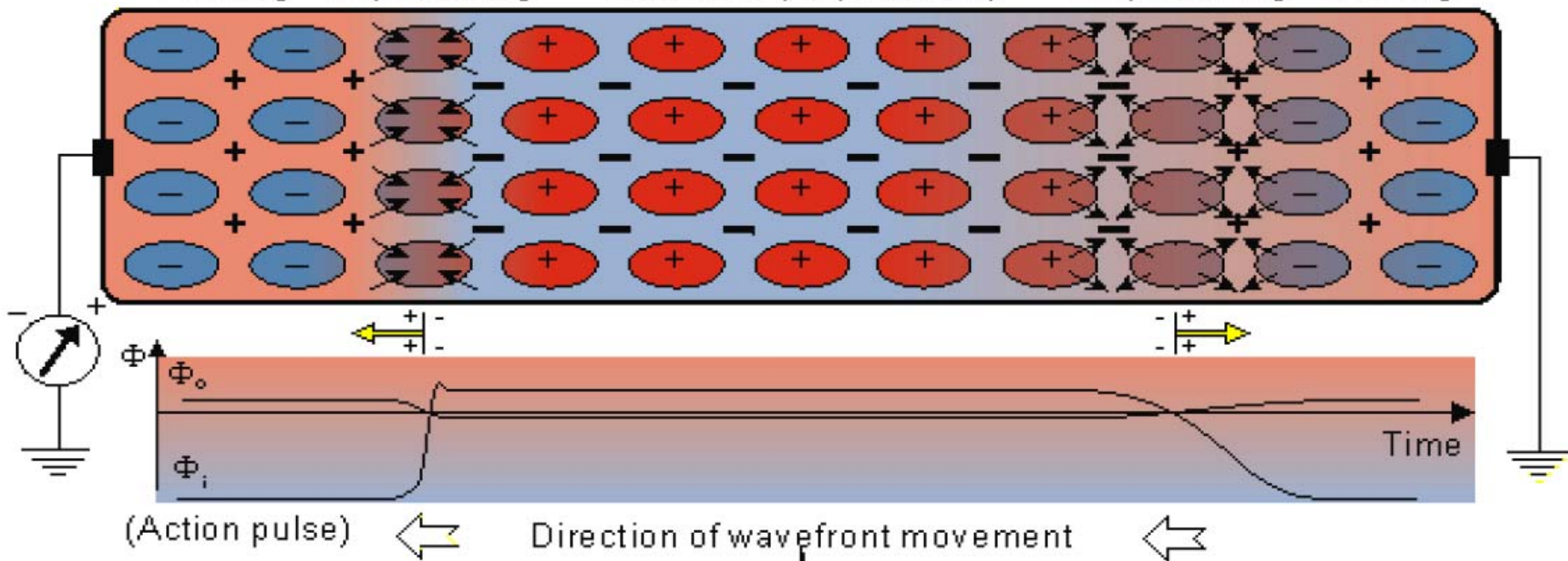
DEPOLARIZATION

Positive ions (Na^+) flowing into the depolarizing cells make Φ_o (outside the cells) more negative.

REPOLARIZATION

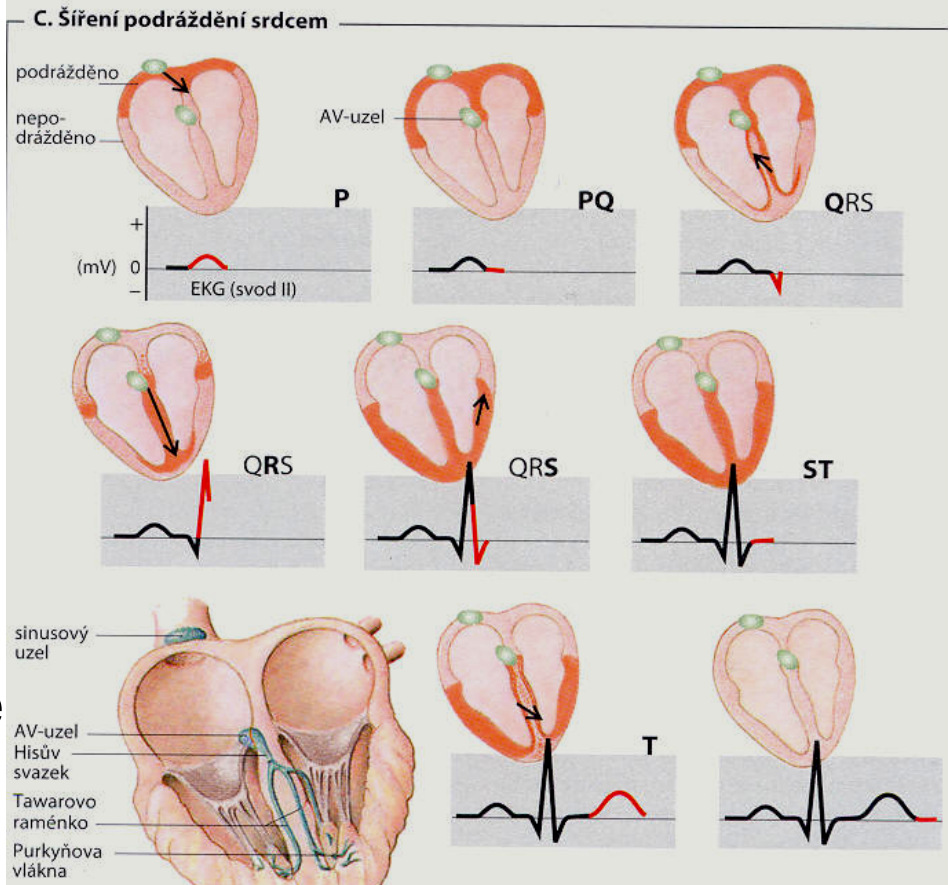
Positive ions (K^+) flowing out from the repolarizing cells make Φ_o (outside the cells) more positive.

Resting Depolarizing Activated (Depolarized) Repolarizing Resting



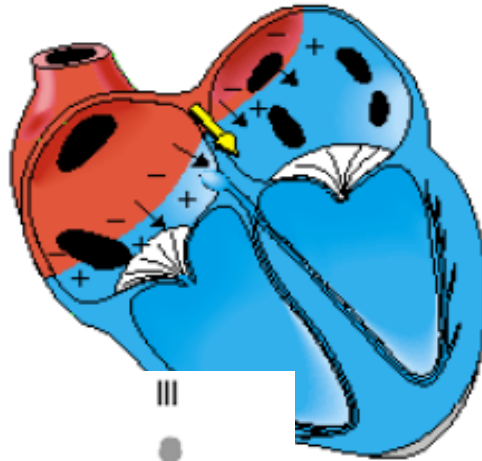
Převodní soustava

- Vlna P – depolarizace předsíní (síní)
- Komplex QRS – depolarizace komor
- Vlna T – repolarizace komor

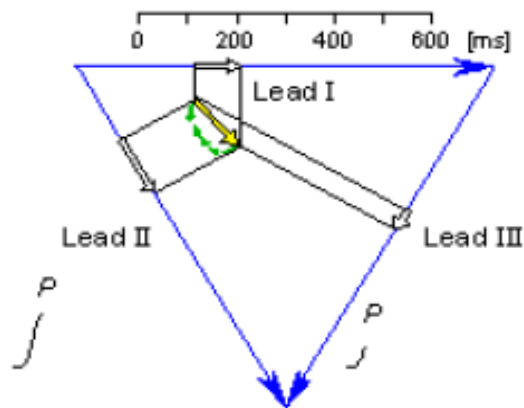
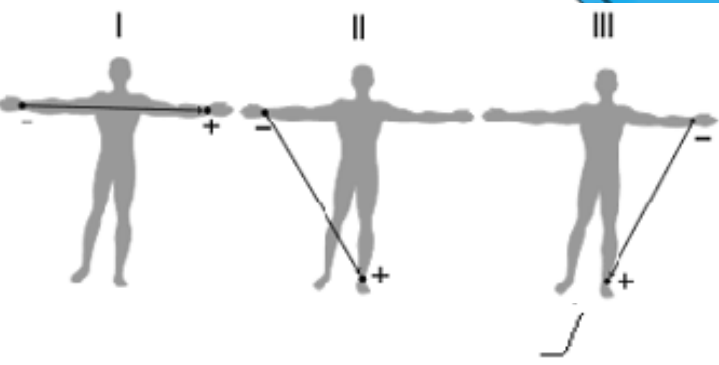


normální průběh dráždění	čas (ms)	EKG	rychlost vedení (m · s ⁻¹)	vlastní frekvence (min ⁻¹)
sinusový uzel tvorba podnětů vstupující do vzdálených částí síní	0 50 85	vlna P	0,05 0,8–1,0 v síní	60–100
AV-uzel další vedení impulzu	50 125	úsek P-Q (zdržení dalšího vedení)	0,05	40–55
aktivován Hisův svazek	130	komplex QRS	1,0–1,5	25–40
aktivovány konce ramének	145		1,0–1,5	
aktivována Purkyňova vlákna	150		3,0–3,5	
vnitřní strana myokardu (pravá komora plně aktivována)	175	komplex QRS	1,0 v myokardu	žádná
vnitřní strana myokardu (levá komora plně aktivována)	190			
zevní strana myokardu (pravá komora plně aktivována)	205			
zevní strana myokardu (levá komora plně aktivována)	225			

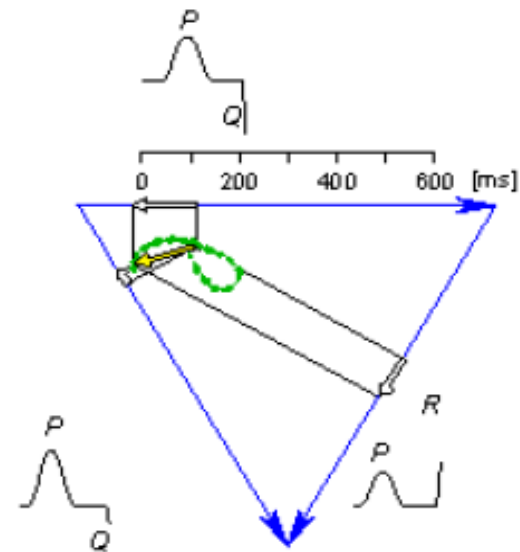
ATRIAL
DEPOLARIZATION
80 ms



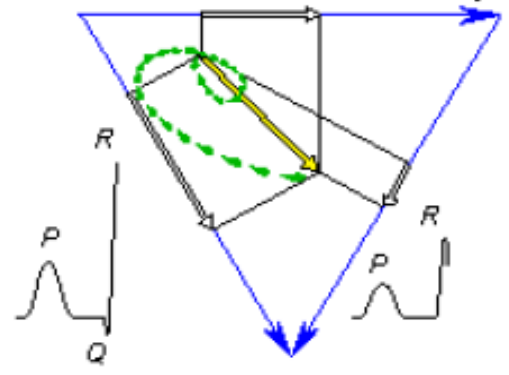
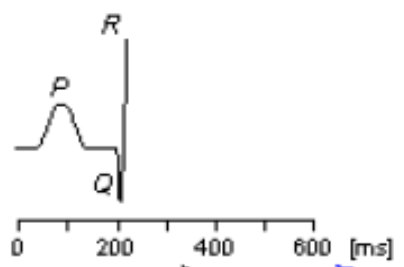
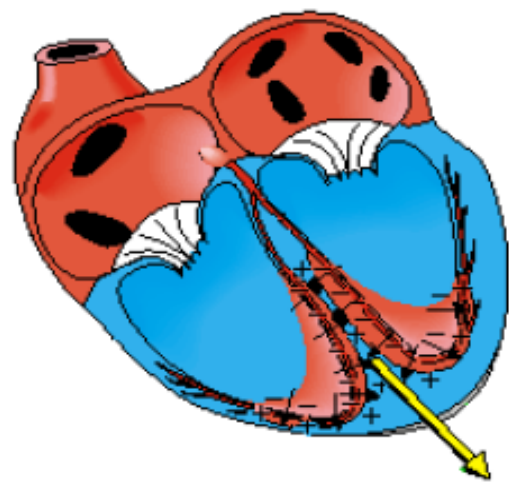
SEPTAL
DEPOLARIZATION
220 ms



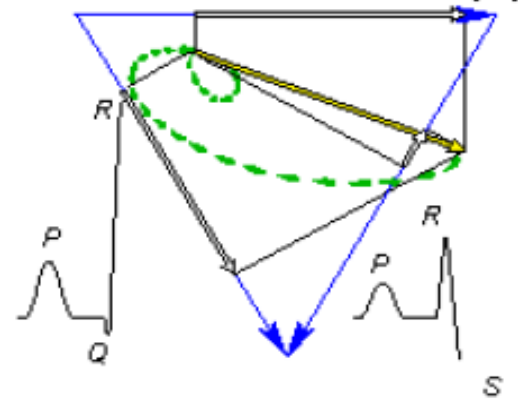
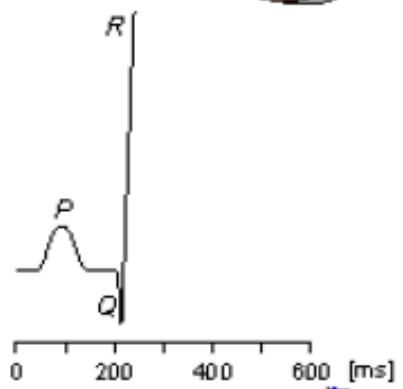
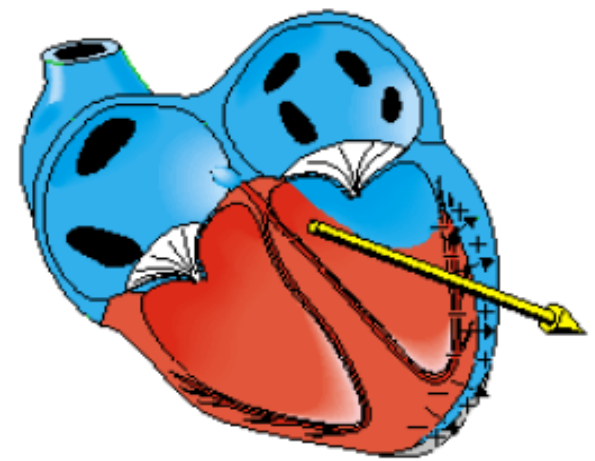
Einthovenův trojúhelník



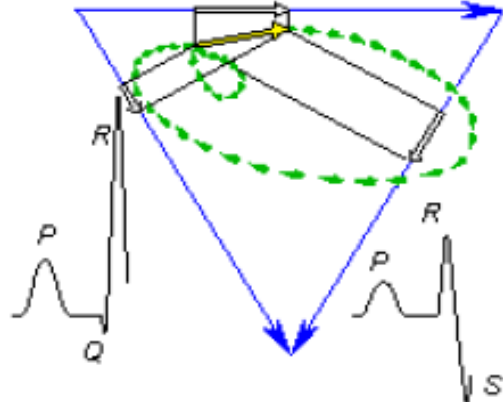
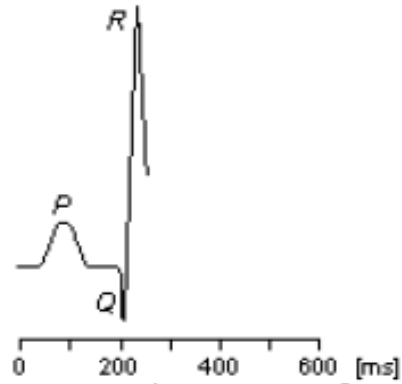
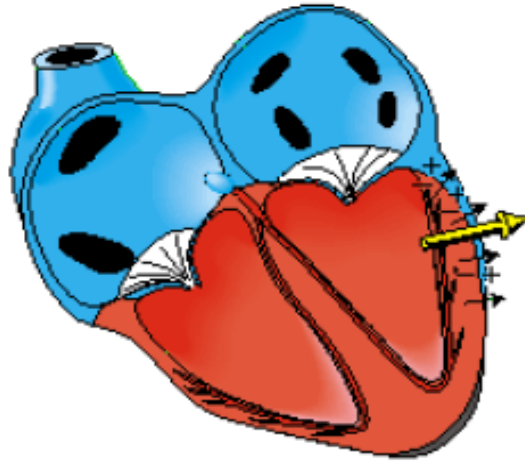
APICAL
DEPOLARIZATION
230 ms



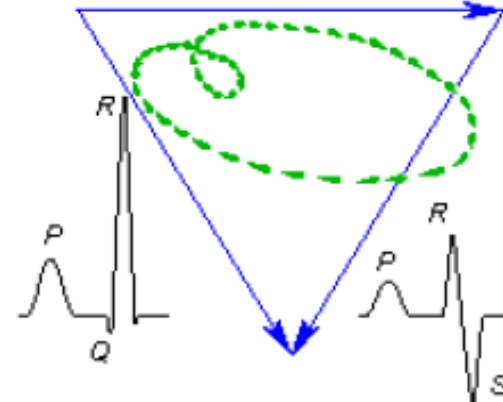
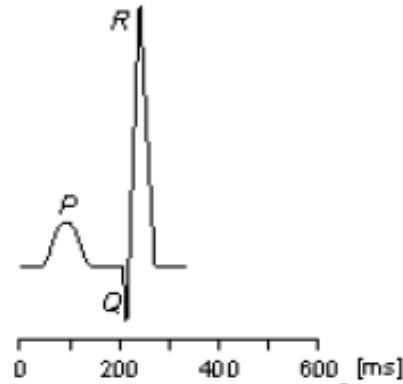
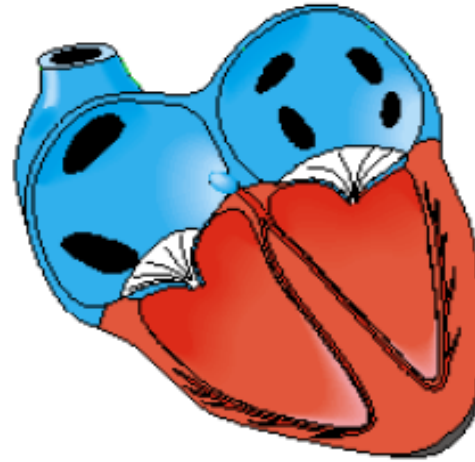
LEFT VENTRICULAR
DEPOLARIZATION
240 ms



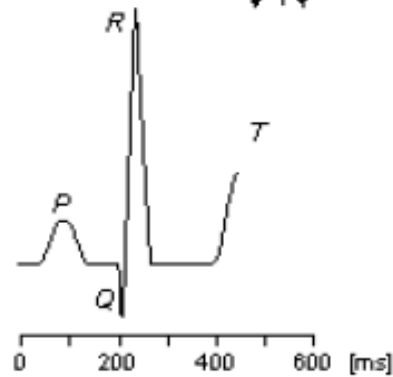
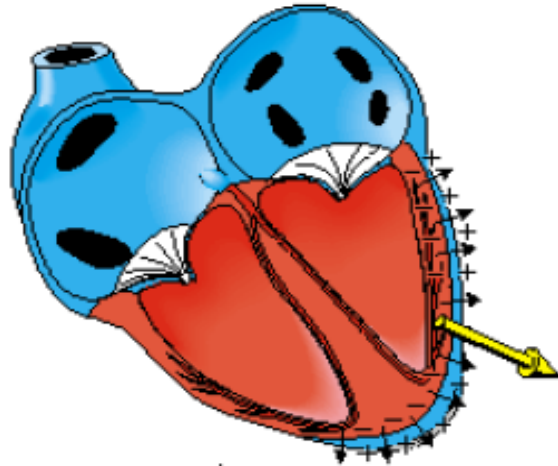
LATE LEFT VENTRICULAR
DEPOLARIZATION
250 ms



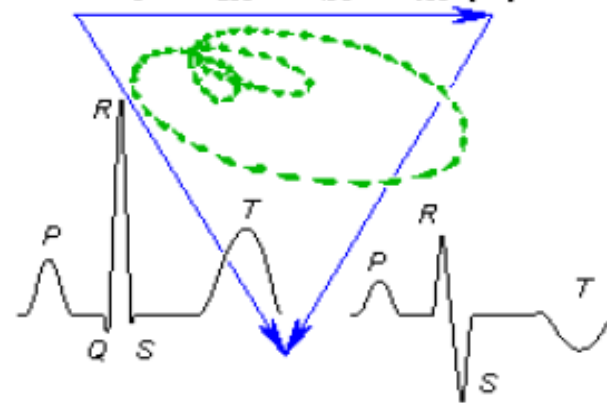
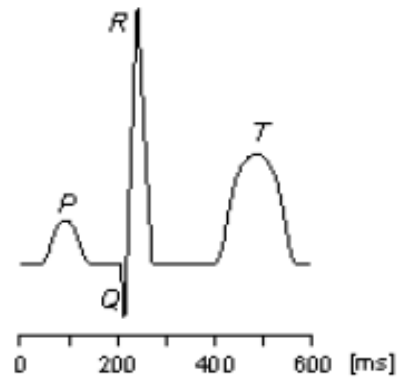
VENTRICLES
DEPOLARIZED
350 ms

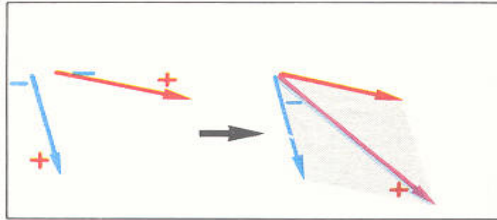


VENTRICULAR
REPOLARIZATION
450 ms

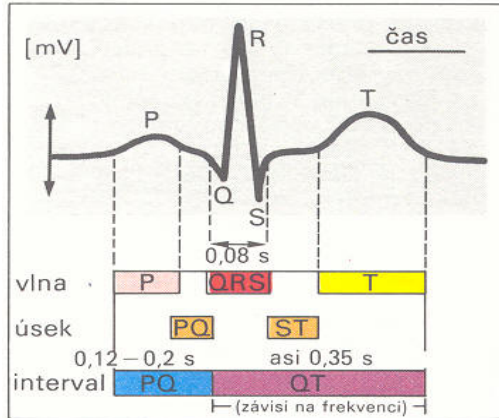


VENTRICLES
REPOLARIZED
600 ms

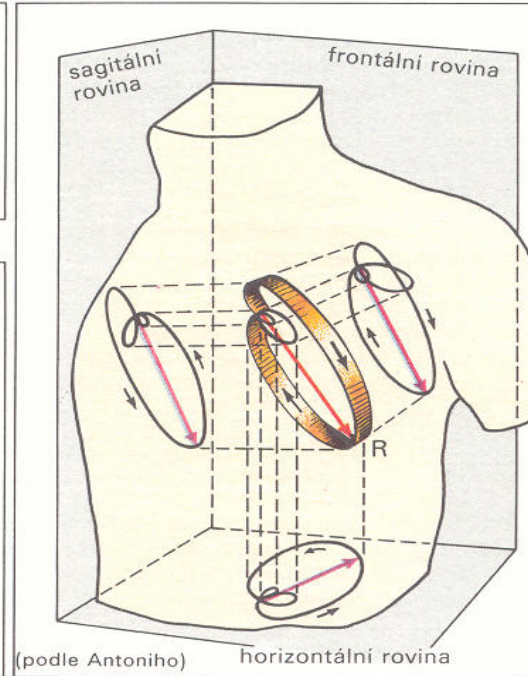




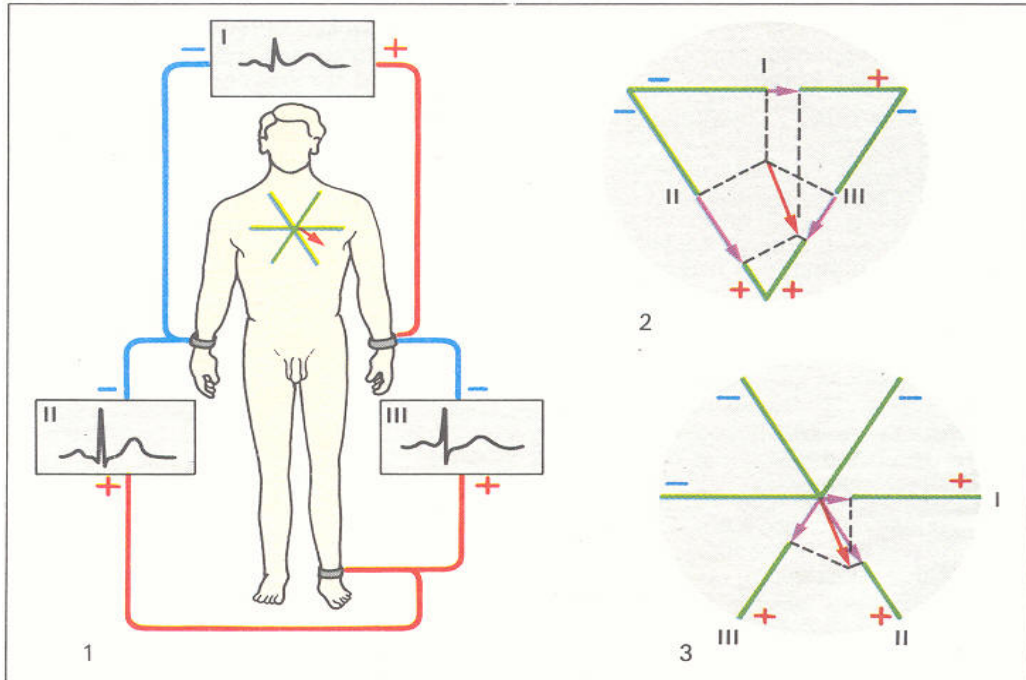
A. Vznik sumačního vektoru



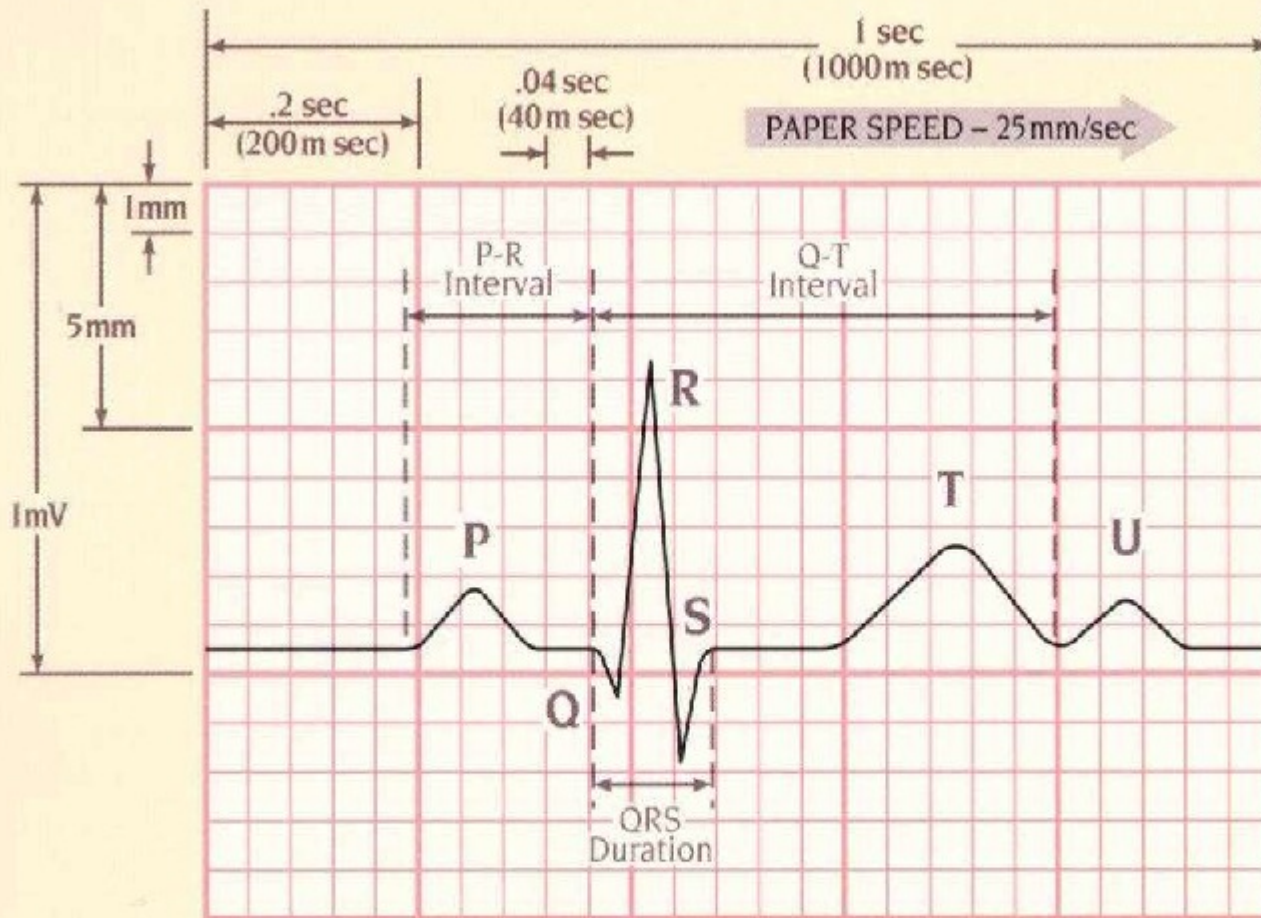
B. EKG křivka



C. Vektorová smyčka (vektor. kardiografie)



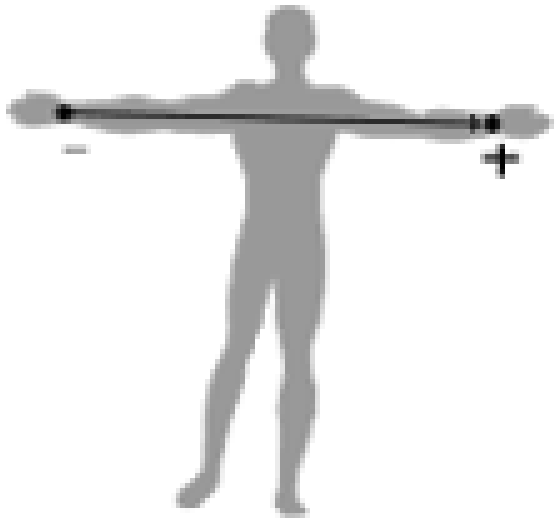
D. Bipolární svody I, II a III podle Einthovena



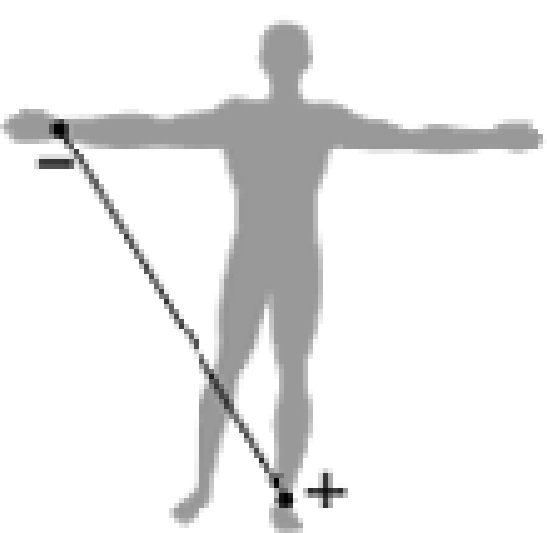
VERTICAL AXIS	1 Small Square = 1 mm (0.1mV)
	1 Large Square = 5mm (0.5mV)
	2 Large Squares = 1mV

HORIZONTAL AXIS	1 Small Square = .04 sec (40 m sec)
	1 Large Square = .2 sec (200 m sec)
	5 Large Squares = 1 sec (1000 m sec)

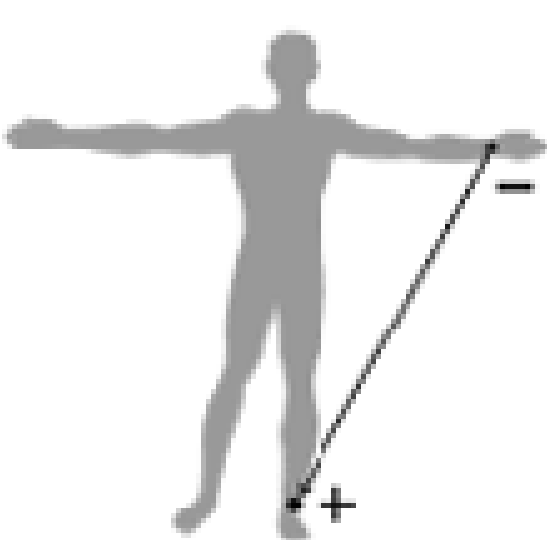
I



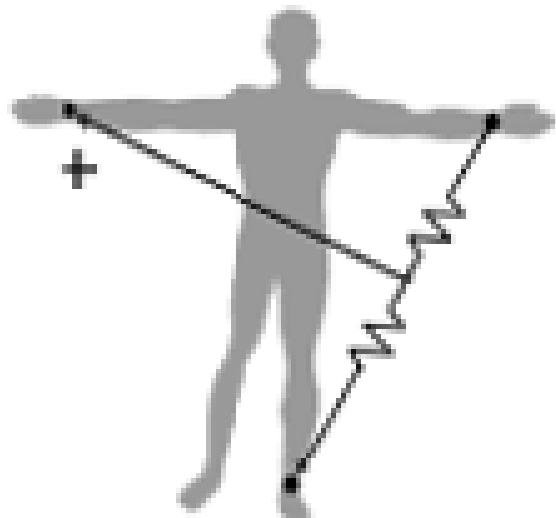
II



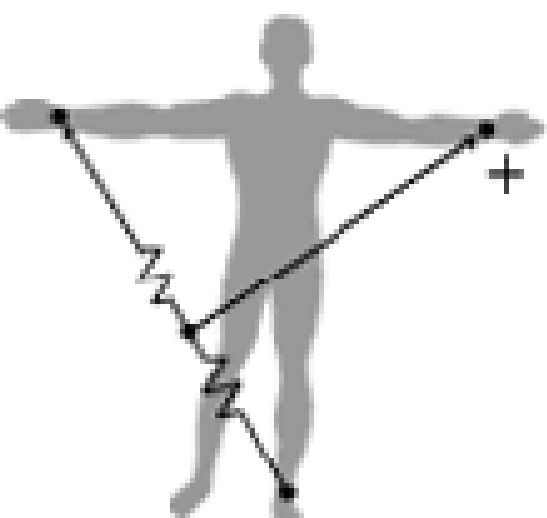
III



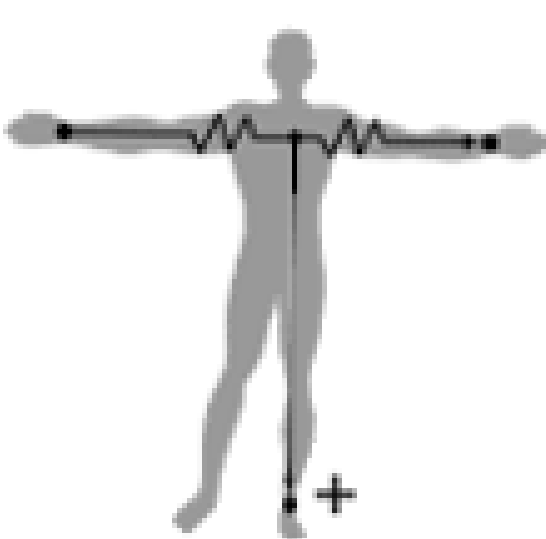
aVR



aVL

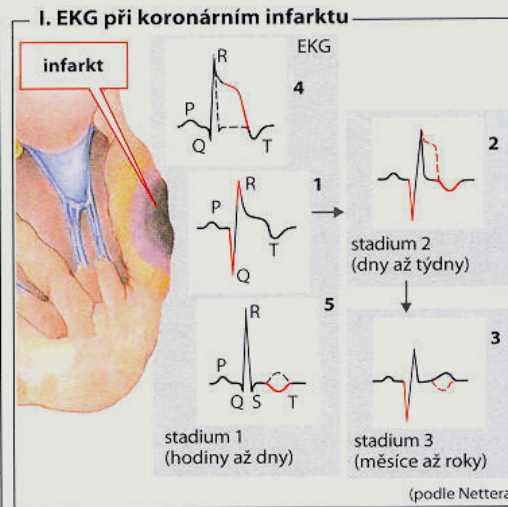
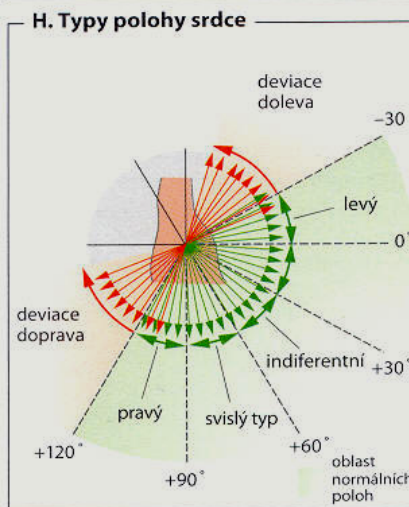
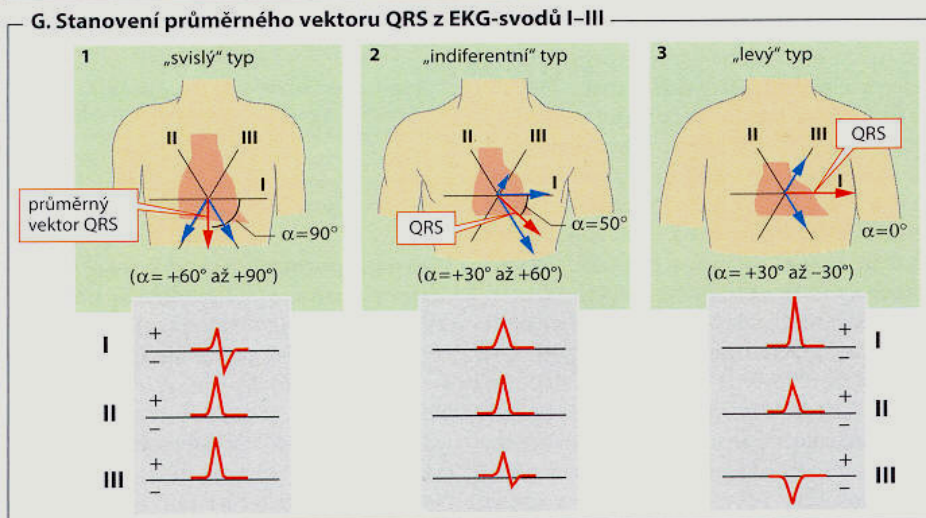
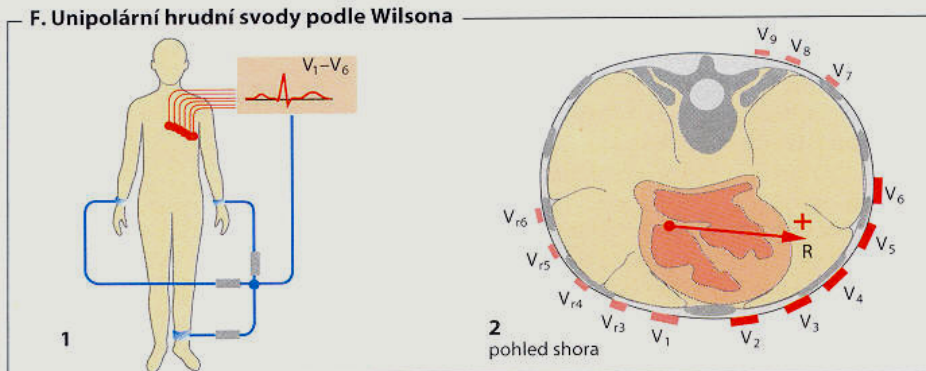


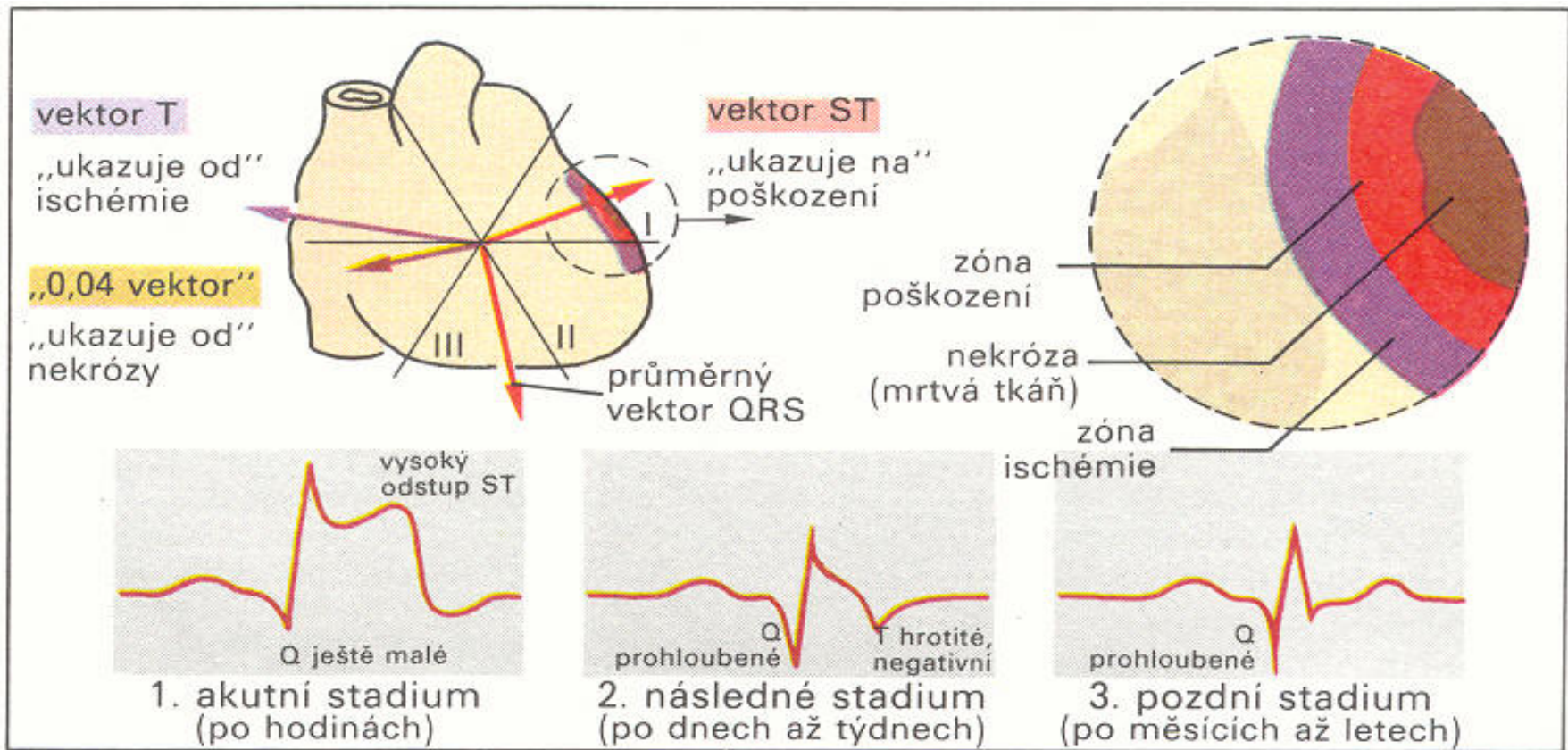
aVF





Elektrická srdeční osa





K. Infarkt myokardu

[Poruchy na webu](#)