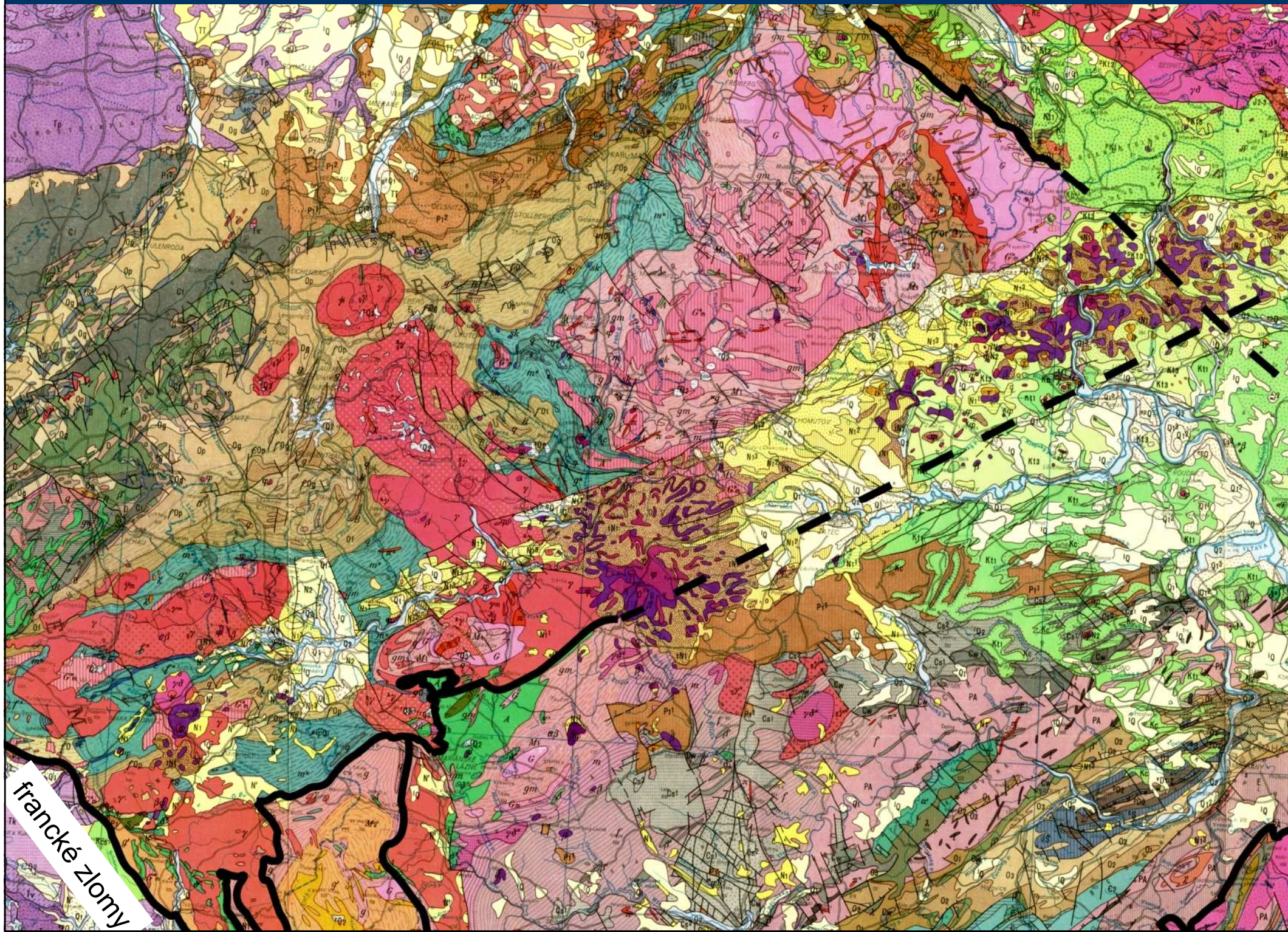


**Krušnohorská oblast**

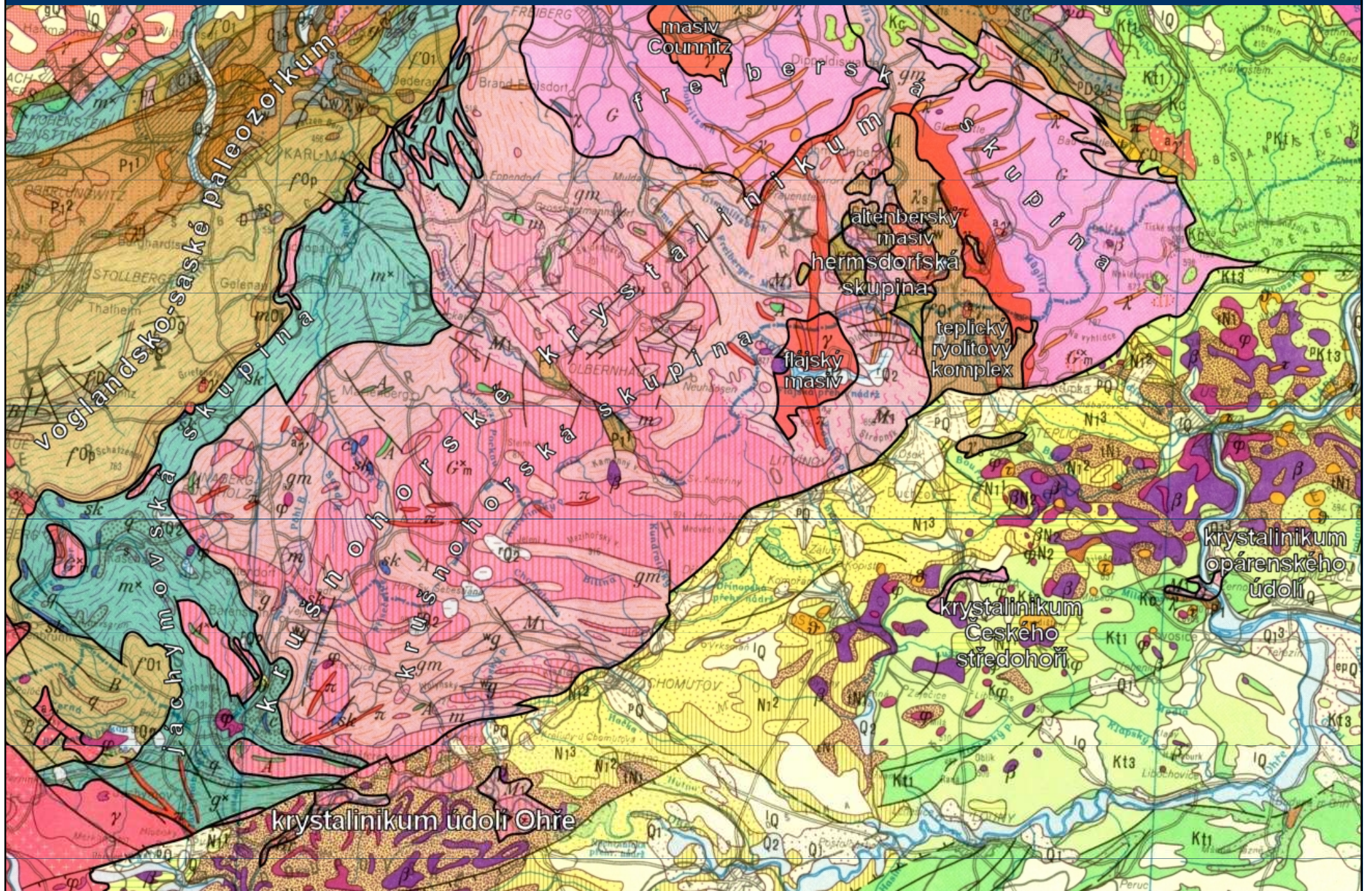
(saxothuringikum)



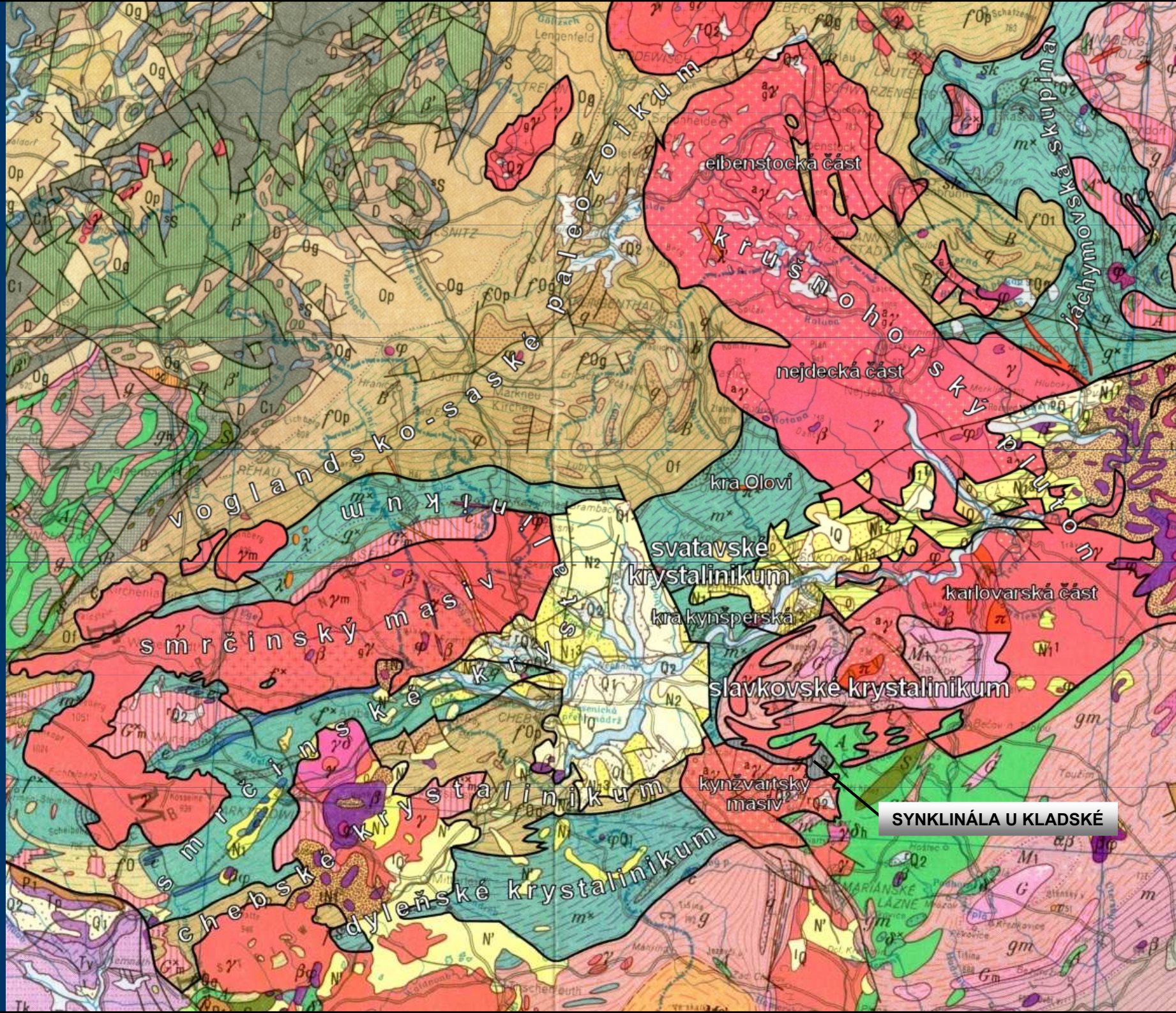


francké zlomy








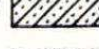
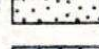
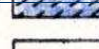

















- 1  K7
  - 2  K6
  - 3  K7
  - 4  K6
  - 5  K5
  - 6  K4
  - 7  K4
  - 8  K4
  - 9  K3
  - 10  K3
  - 11  K1
  - 12  K2
  - 13  K2
  - 14  K2
  - 15  K2
  - 16  K2
  - 17  K2
- SVATRUŠKÉ  
 AND-SOSKÉ  
 PLUTON  
 VHOVSAÉ  
 LEBSKÉ  
 LEŇSKÉ  
 WENOHOR  
 LEŇSKÉ

