

# GIS software

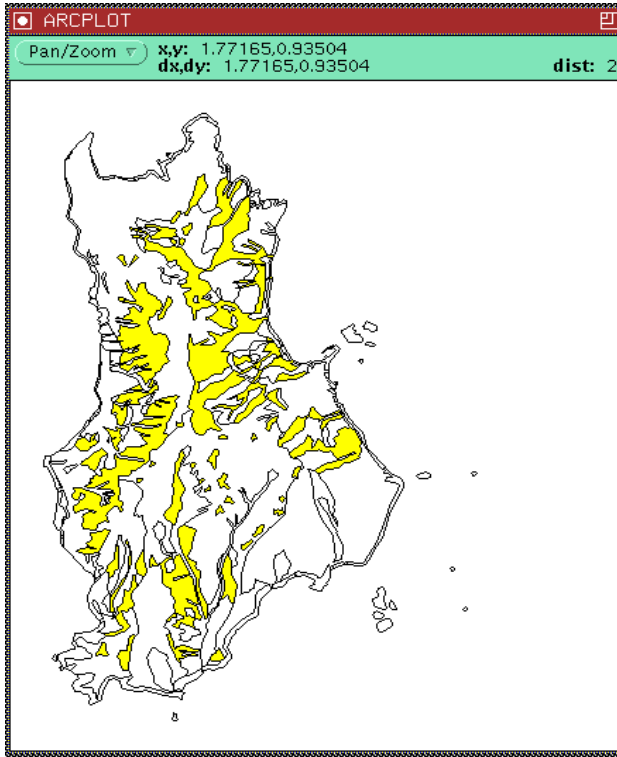
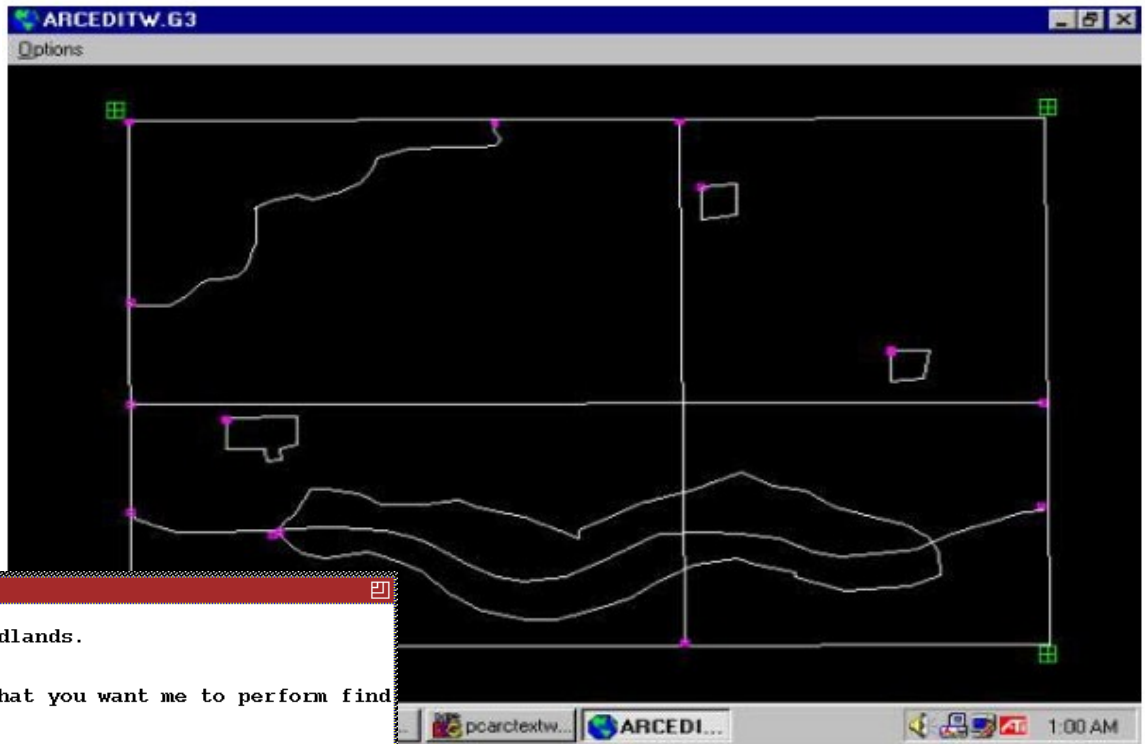
- Datový model
- Databázový stroj
- Funkcionalita
  - Analýza
  - Kartografické funkce
- Rozšiřitelnost
- Platforma
- Výkon

# Typy software

- GDBMS
- Produkční systém
- Desktop GIS
- Web GIS server
- Viewer

# ESRI

- 1969
- POIS
- Do 90-tych UNIX
- ARC/INFO – ArcView- ArcGIS
- TVM + GRID
- AML – AVENUE – COM(VBA)
- Dynamická vizualizace, Mapová a Overlay algebra, CGM podobná metagrafika



```

gort

: find all woodlands.

I understand that you want me to perform find
on woodlands.

Now doing: mapext %.db%/VEGETATION;clearsele
ct;reselect %.db%/VEGETATION POLYGON LEGEND//V
EGTYPE = 'woodlands'; &s .shadecolor = %.shade
color% + 1;polygonshades %.db%/VEGETATION %.sh
adecolor%;clearselect;linecolor black;arcs %.d
b%/VEGETATION
RESULT
Resulting parse:

Time (sec.): 117.84

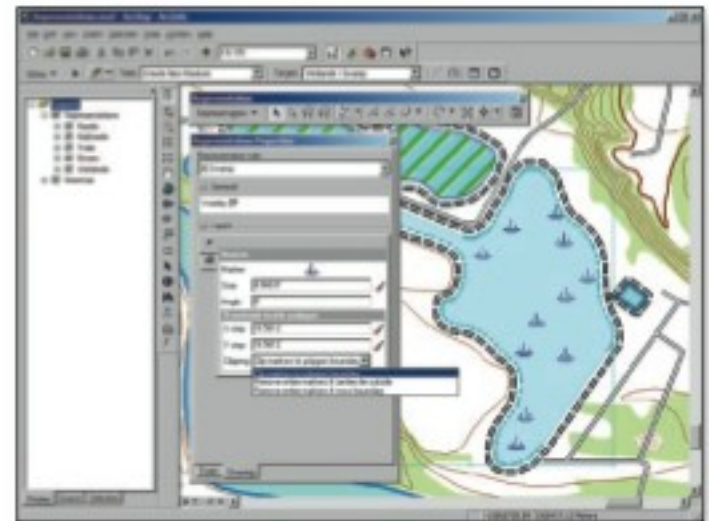
```

```

navi.cs.Buffalo.EDU

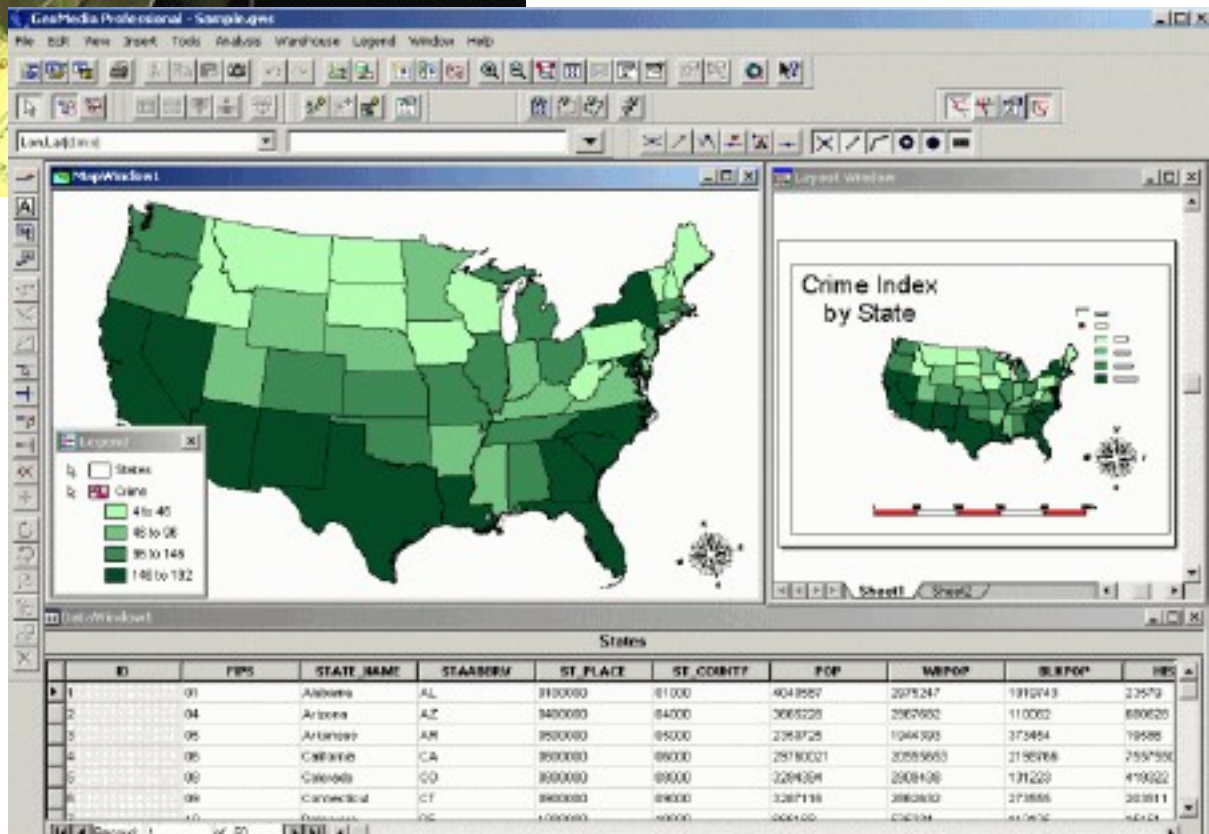
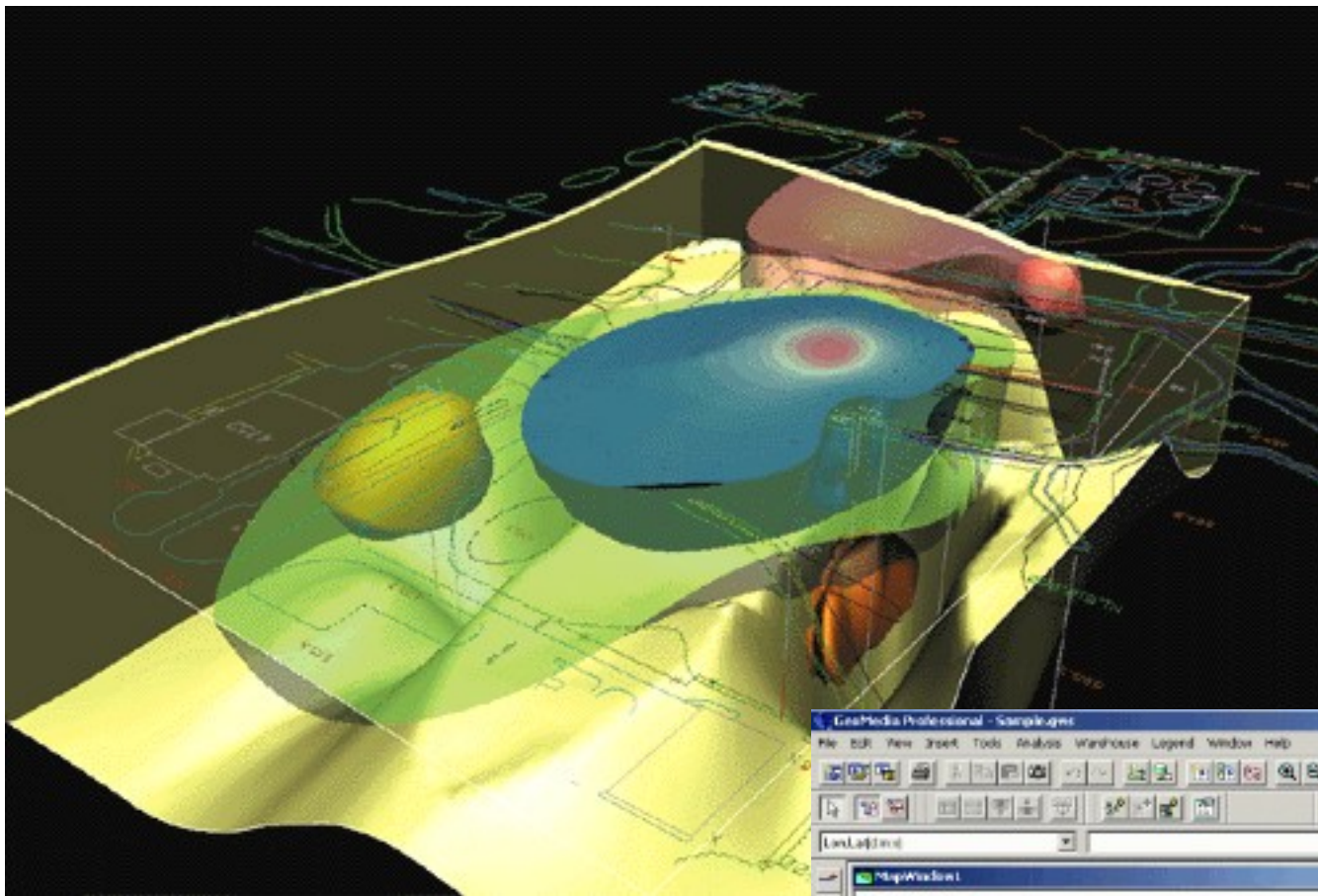
1: mapext /ncgia/naumov/public_html/project
/database/VEGETATION
1: clearselect
1: reselect /ncgia/naumov/public_html/proje
ct/database/VEGETATION POLYGON LEGEND//VEGTYP
E = 'woodlands'
/NCGIA/NAUMOV/PUBLIC_HTML/PROJECT/DATABASE/VEG
ETATION polys : 63 of 238 selected
1: &s .shadecolor = 6 + 1
1: polygonshades /ncgia/naumov/public_html/
project/database/VEGETATION 7
1: clearselect
1: linecolor black
1: arcs /ncgia/naumov/public_html/project/d
atabase/VEGETATION

```



# INTERGRAPH

- 1969
- IGDS
- MGE
- Spaghetti + TVM (Topofile)
- Dynamo
- Voxely
- Geomedia (



# MapINFO

- 1986
- MS Win desktop GIS
- Kartodiagramy
- Spaghetti + SQL
- Bez gridu, OLE ...

MapInfo Professional

File Edit Tools Objects Query Table Options Map Vertical Mapper Window Help

Sales\_GB\_outline\_\_thinned\_\_g Map

Prizm Map of Customers

World

Sales Browser

Zoom: 1,800 km Editing: GB\_outline\_thinned Selecting: None

50 Kilometer Grid Squares  
Number of Customers

1050	(1)
280	(1)
100 to 200	(4)
50 to 100	(9)
25 to 50	(14)
10 to 25	(17)
1 to 10	(39)
0	(59)

CUSTOMER	COMPANY	TOWN	BUSINESS	TERRITORY	
<input type="checkbox"/>	3581	Racal		Other	East
<input type="checkbox"/>	3309	DATABASE GROUP	WELLINGBOROUGH		East
<input type="checkbox"/>	964	R O S P A	Edinburgh	Insurance	North
<input type="checkbox"/>	811	Nines Ltd	Craydon	Other	South
<input type="checkbox"/>	404	Exploration Associates	Bridgewater		West
<input type="checkbox"/>	2668	Par-IT Ltd	Portsmouth	Communcal	South
<input type="checkbox"/>	1000	Securitas	Exeter	Unknown	West
<input type="checkbox"/>	1106	The ESAB Group	Gloucester	Unknown	West
<input type="checkbox"/>	2805	Simcom Ltd	RUSLIP		South
<input type="checkbox"/>	382	Enfield & Hamngay Fam	Bradford	Distrib	East
<input type="checkbox"/>	1132	Turner Diesel Limited	Gt Dunmow	Transport	South
<input type="checkbox"/>	3185	BRITISH GAS	Tewinham	Unknown	South
<input type="checkbox"/>	3047	A PLUS GROUP	Wareham	Other	West
<input type="checkbox"/>	1948	P Reago	London	Other	South
<input type="checkbox"/>	3549	Combined Technical Ser			South
<input type="checkbox"/>	3090	Open 4 Systems Ltd	Swindon	Estate age	West



# GDBMS

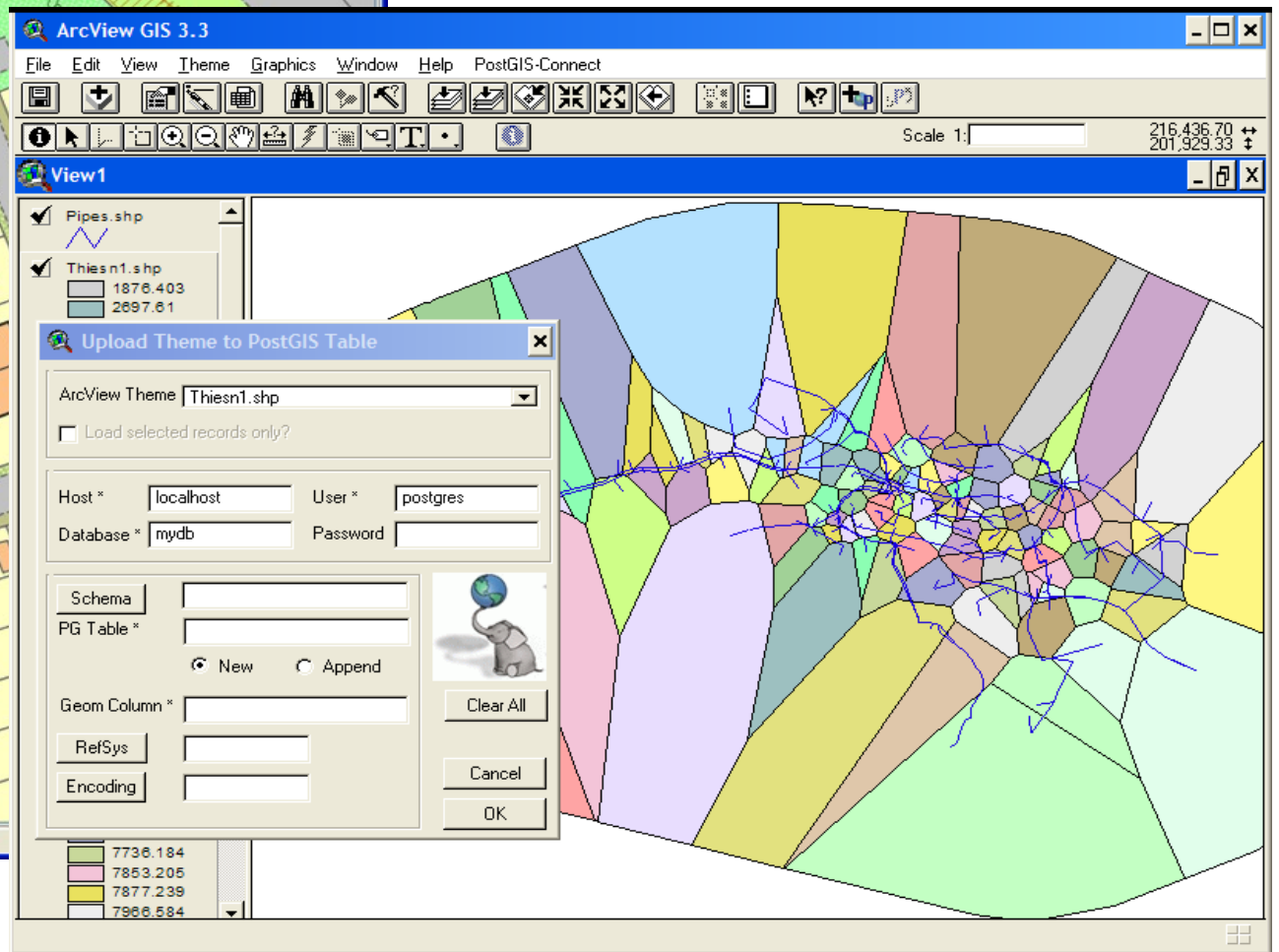
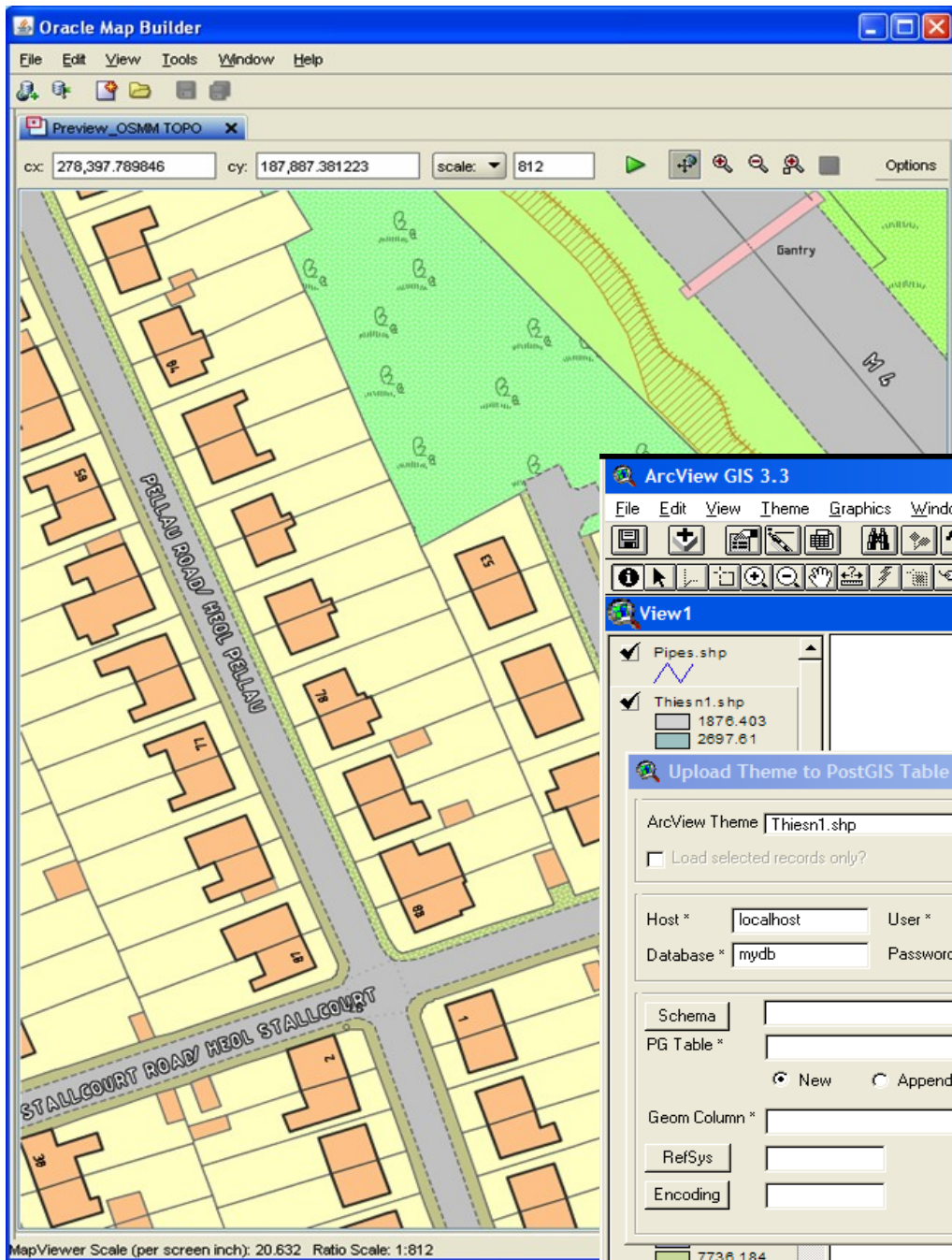
ORACLE SDO

ESRI SDE

SF for SQL

PostGIS

MySQL spatial extension



# GRID GIS

IDRISI, GRASS, ERDAS

The image displays a screenshot of the GRASS GIS software interface. The main window, titled "Map Display 1", shows a topographic map with a stream network overlaid in blue. A blue line profile is drawn across the map. To the left, a "Scatterplot of Band3 (Y axis) and Band4 (X axis)" is visible, showing a 3D surface plot with a color gradient from green to red. Below the scatterplot is a "Signature Completion Chart" with a line graph. In the bottom center, a "Profile Window" displays a line graph of elevation (Y-axis, 1066 to 1840) versus distance (X-axis, 0 to 16020.000000). The profile is for "elevation.dem@PERMANENT". On the right, the "GRASS 3.0 cvs GIS Manager" window is open, showing the "Map Layers for Display 1" panel with layers: streams@PERMANENT, elevation.dem@PERMANENT, and aspect@PERMANENT. Below the layers panel is a "Display" section with various options checked, and an "Output - GIS.m" window showing command-line parameters and measurement results.

**Map Layers for Display 1**

- streams@PERMANENT
- elevation.dem@PERMANENT
- aspect@PERMANENT

**Display:**  shapes  categories  topology  line directions  
 points  lines  boundaries  centroids  areas

**Point symbols:** icon: basic/circle size: 5

**Draw lines:**  color: blue width: 2 (pixels)

**Fill areas:**  color: grey  random colors  GRASSRGB column

**Label vectors:**  label text color: black text size: 8  
label part to align with vector point: left justification: center

**Output - GIS.m**

```
GRASS_WIDTH=607, GRASS_HEIGHT=457
g.pnmcomp in=5104.3.ppm,5104.2.ppm,5104.4.ppm mask=5104.3.pgm,5104.2.pgm,5104.4.pgm
opacity=1.0,0.70,1.0 background=255:255:255 width=607 height=457 output=5104.1.ppm
```

**Measurement**

--segment length	= 16039.577915
cumulative length	= 16039.577915

# WebServer

- OGC WMS, WCS, WFS
- ArcGIS server
  - .NET +JAVA
- Mapserver
- Geoserver

# Opensource

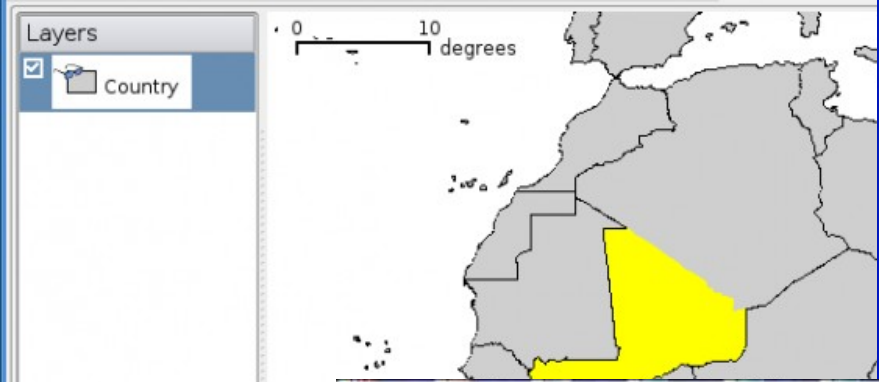
JTS - GEOS

JUMP

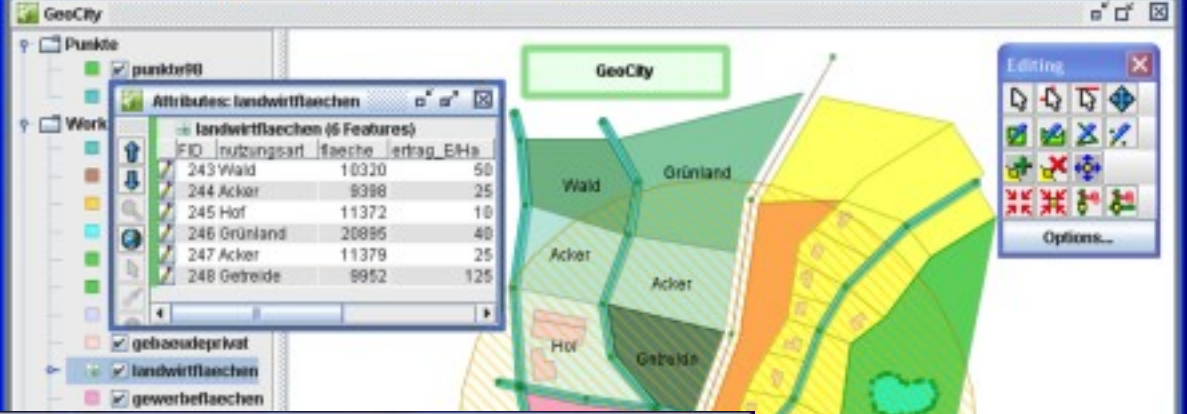
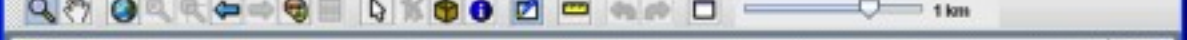
uDIG

QuantumGIS



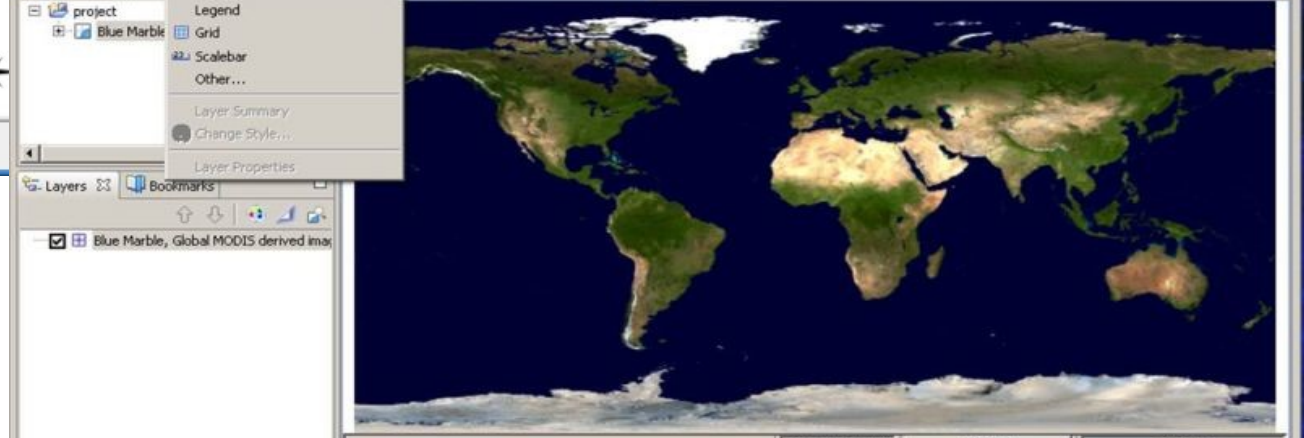
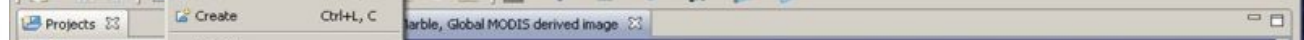


- Layers
- Country



Editing

Options...



- Projects
- project
  - Blue Marble
- Layer Properties
- Add ...
  - Create
  - Legend
  - Grid
  - Scalebar
  - Other...

- Blue Marble, Global MODIS derived ima

1:208,053,886 WGS84 -181, 47

- Map Graphics
- JPL Global Imagery Service