

Abnormal Development of Mouse Embryoid Bodies Lacking p27Kip1 Cell Cycle Regulator

Vítězslav Bryja, Lukáš Čajánek, Jiří Pacherník, Anita C. Hall, Viktor Horváth, Petr Dvořák, Aleš Hampla

Center for Cell Therapy and Tissue Repair, Charles University, Prague, Czech Republic; bDepartment of Molecular Embryology, Institute of Experimental Medicine, Academy of Sciences of the Czech Republic, Prague, Czech Republic; Laboratory of Molecular Embryology, Mendel University Brno, Brno, Czech Republic; dLaboratory of Molecular Neurobiology, Department of Medical Biochemistry and Biophysics, Karolinska Institutet, Stockholm, Sweden; Laboratory of Cytokinetics, Institute of Biophysics, Academy of Sciences of the Czech Republic, Brno, Czech Republic

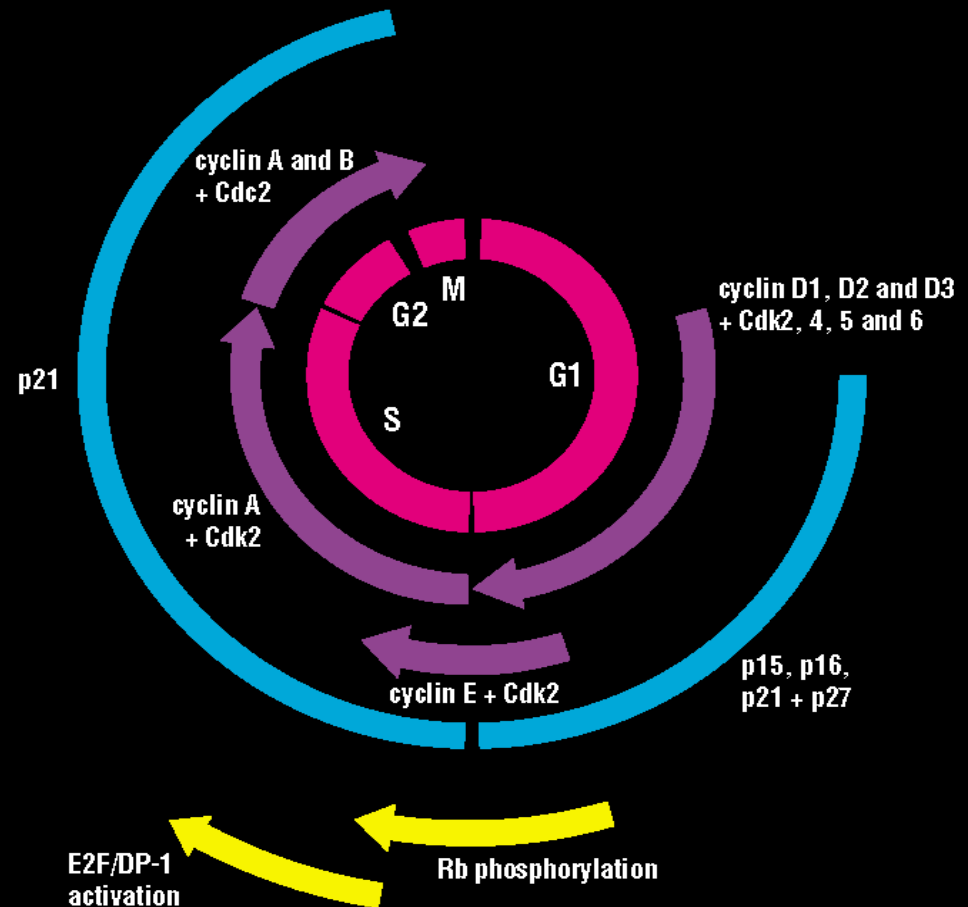


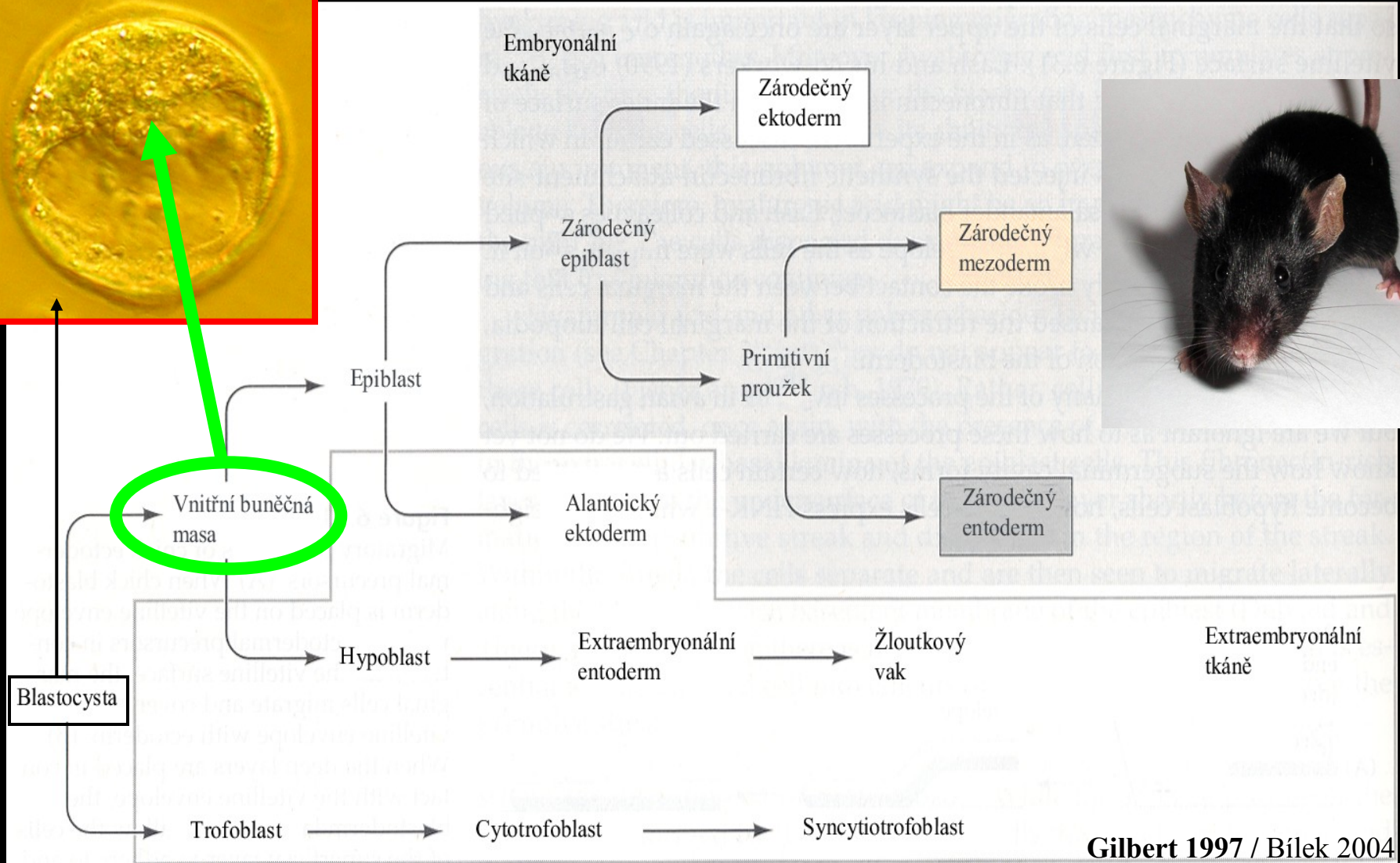
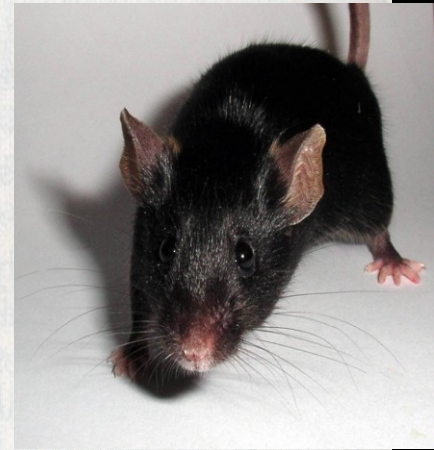
- **Jak ovlivňuje absence p27 (fenotyp p27^{-/-}) diferenciaci ES buněk?**
- **Jaký má absence p27 vliv na skladbu a aktivitu cdk komplexů?**

Úloha p27 – rodina p21, p27, p57

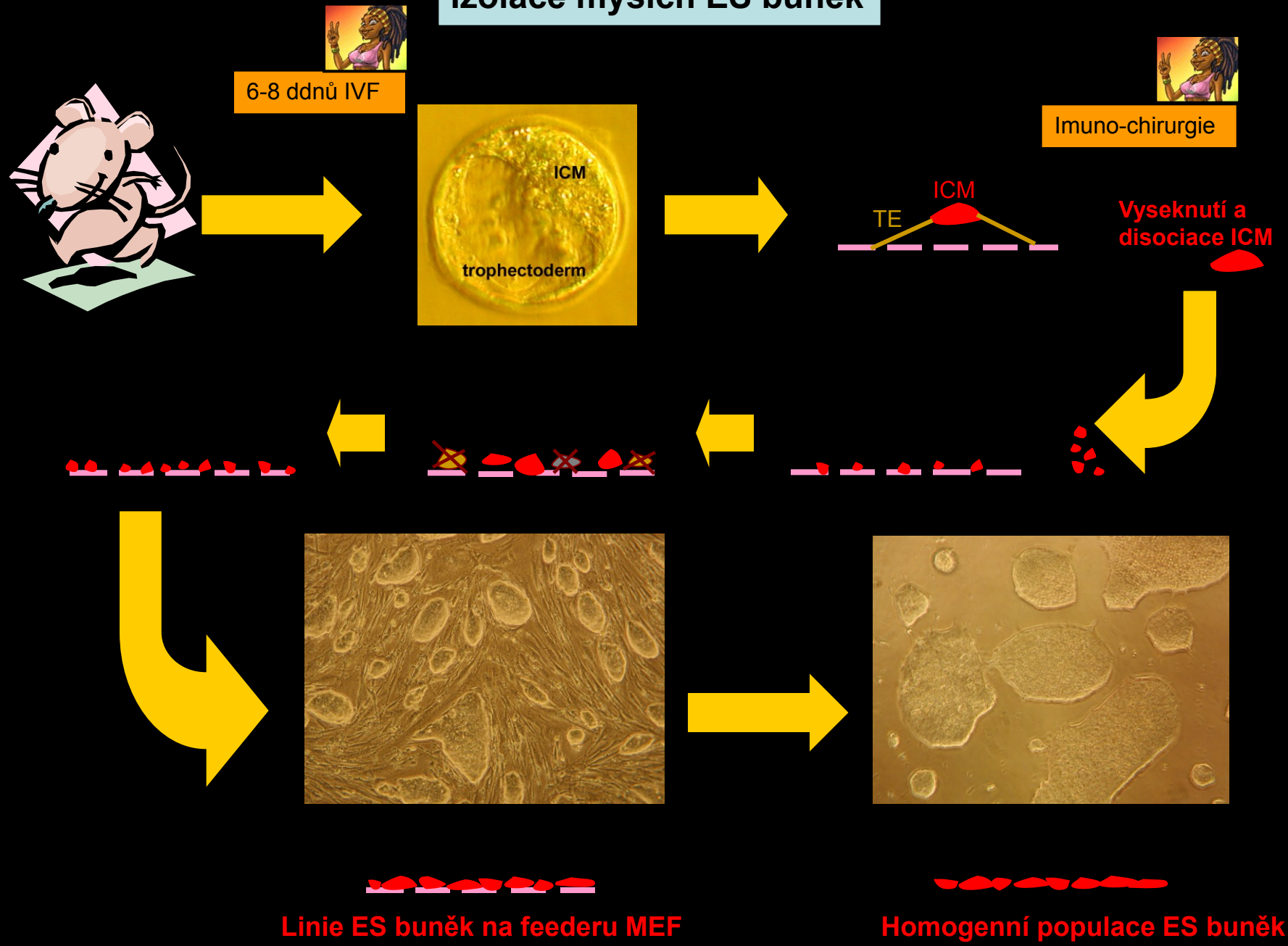
- regulátor buněčného cyklu
- propojení s regulací diferenciace, ale nejasné
- deplece => větší myši, možno revertovat deplecí cD1 (samotný cD1 -/- => menší myši)
=> p27-/- neplodné samice

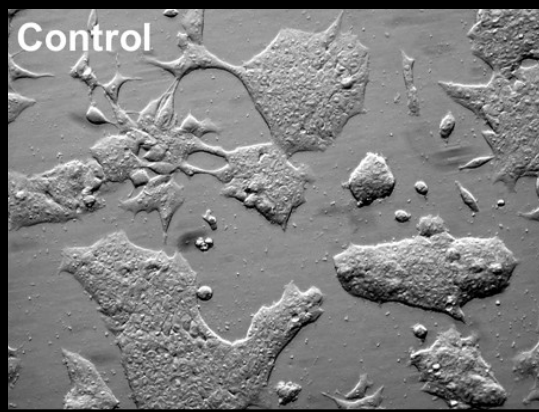
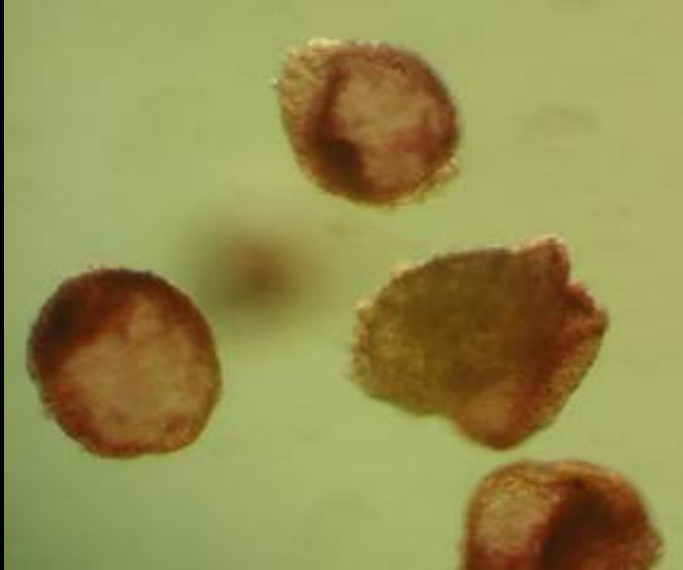
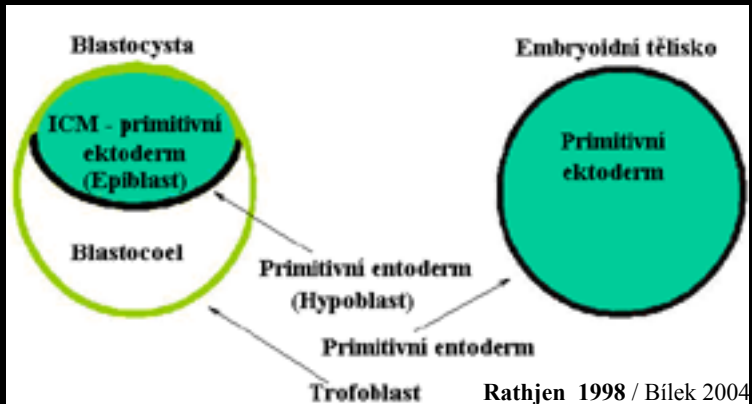
Cell Cycle



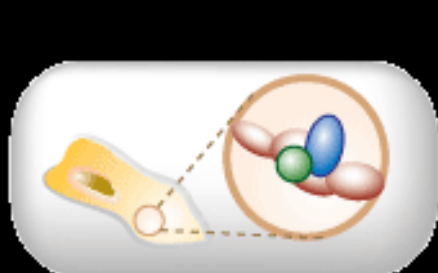


Izolace myších ES buněk





Immunoprecipitate



Cell protein extract containing the two interacting proteins of interest in protein complex



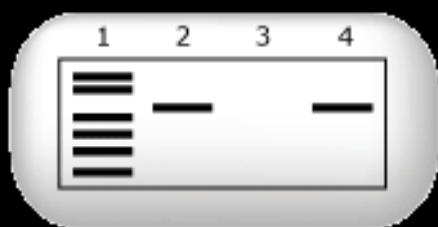
Protein Extraction



Add antibody against one of the proteins of interest



Add antibody binding to the primary antibody

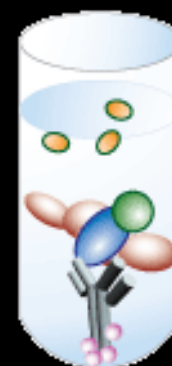


1) Mol. weight marker
2) Extract
3) Supernatant
4) Co-IP

Western blot analysis of the immunoprecipitated proteins using an antibody directed against the second protein of interest.

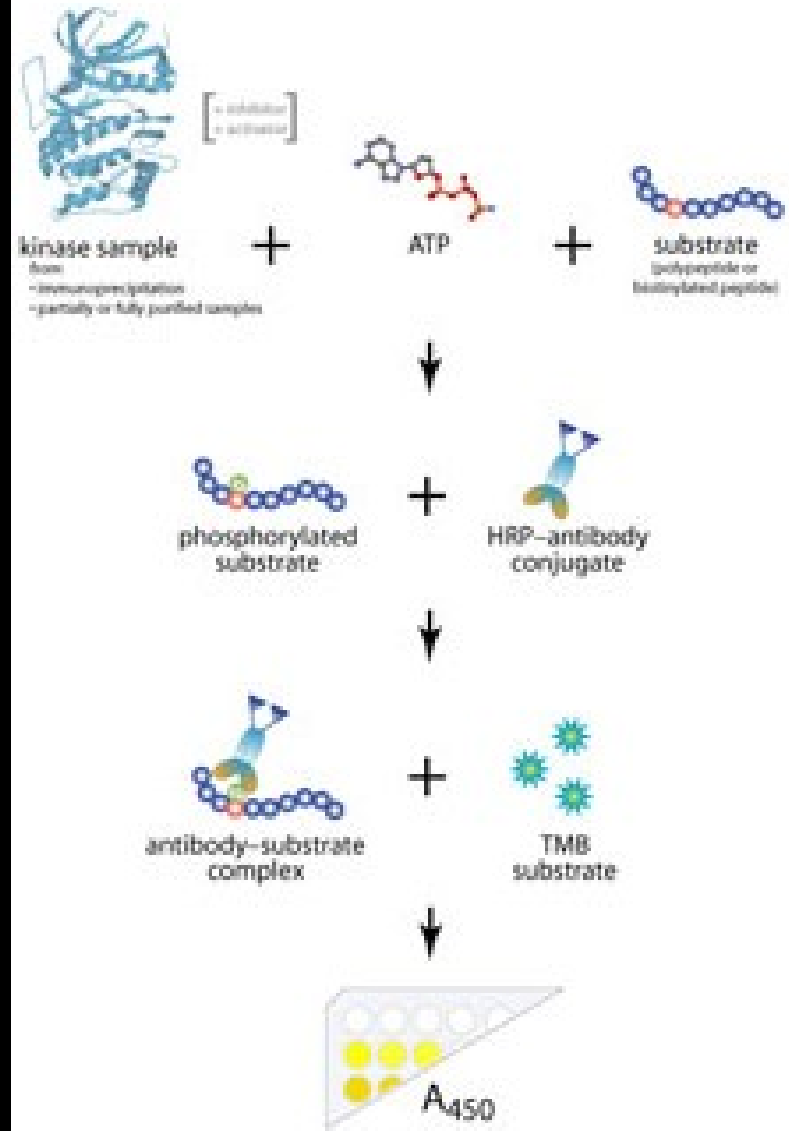
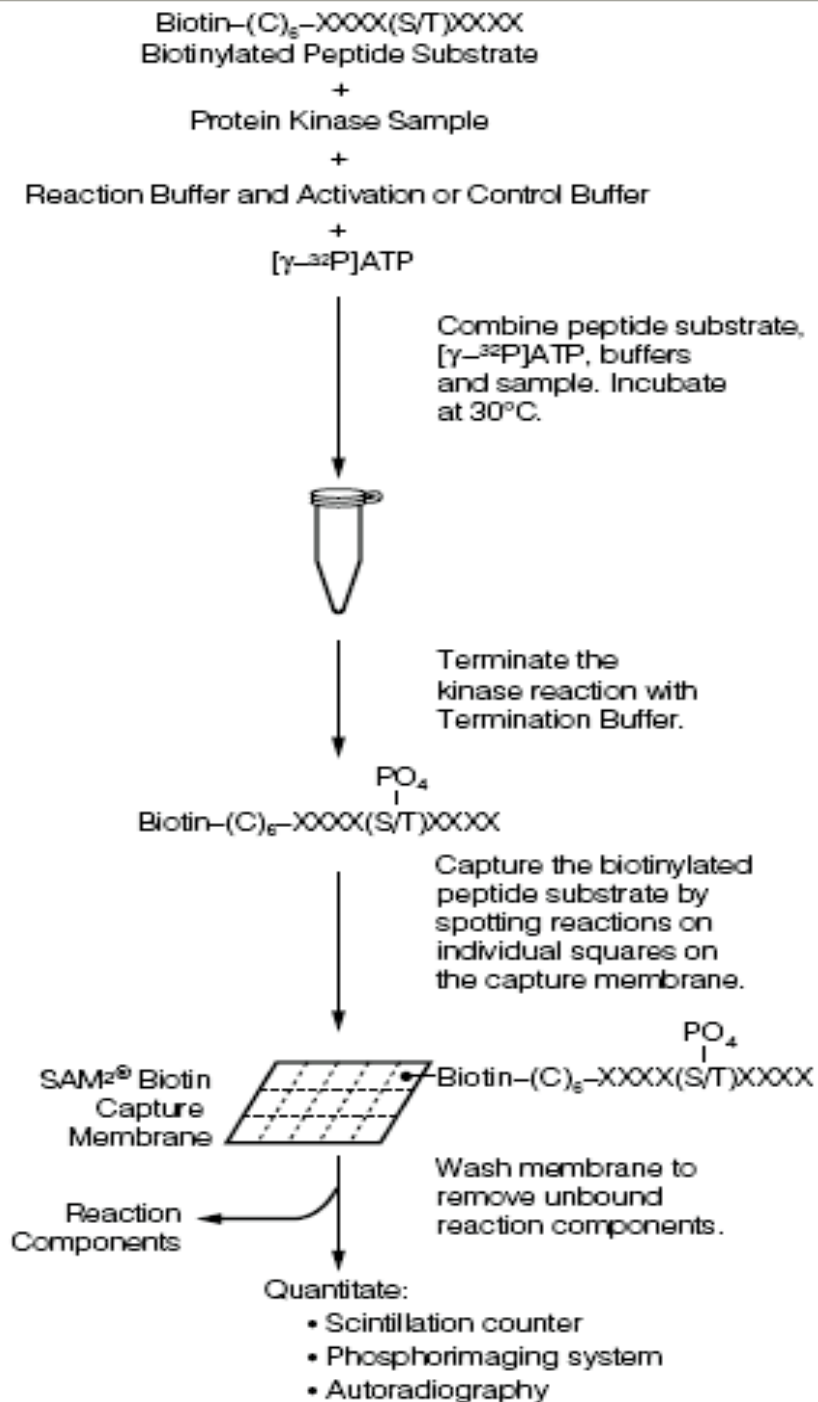


Wash and collect the immunoprecipitated proteins

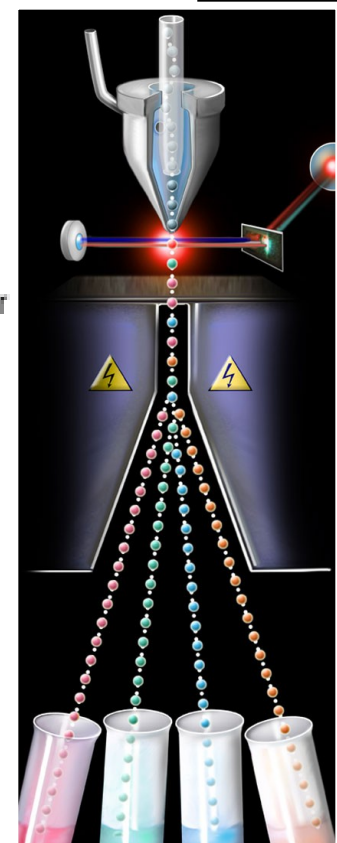
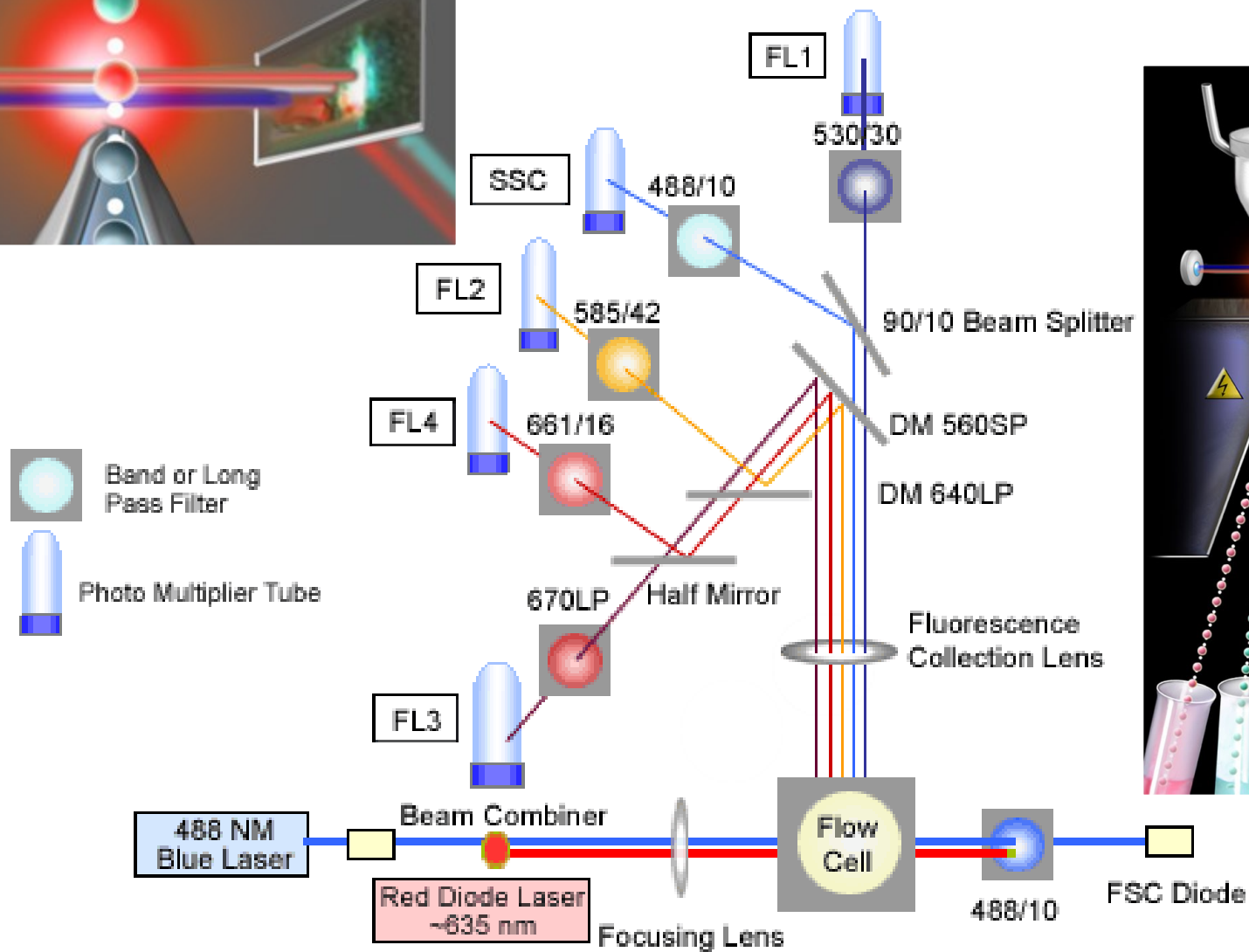
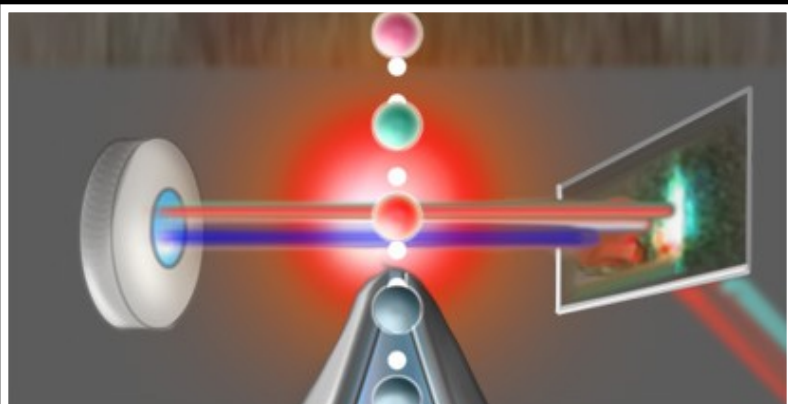


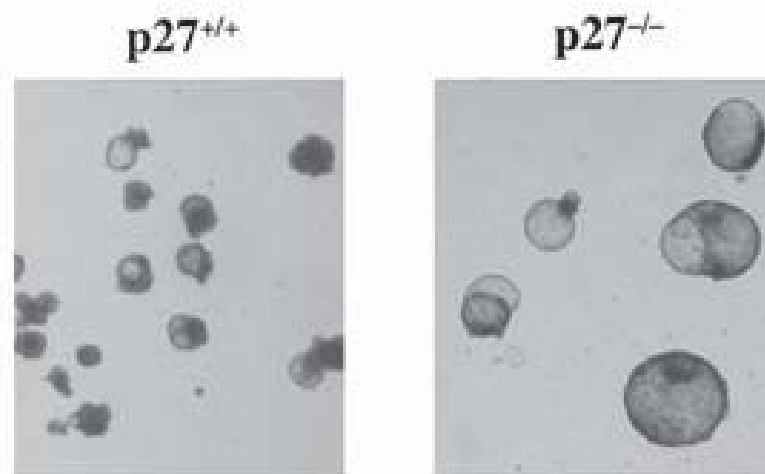
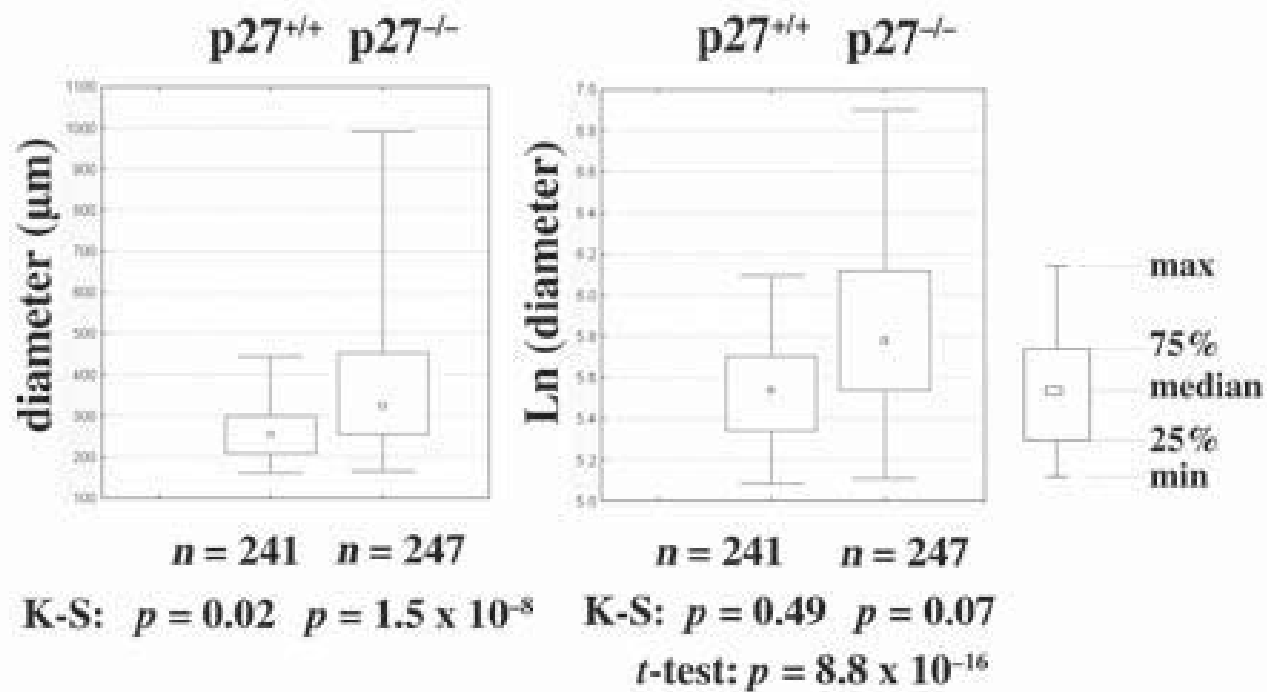
Immunoprecipitate the proteins of interest

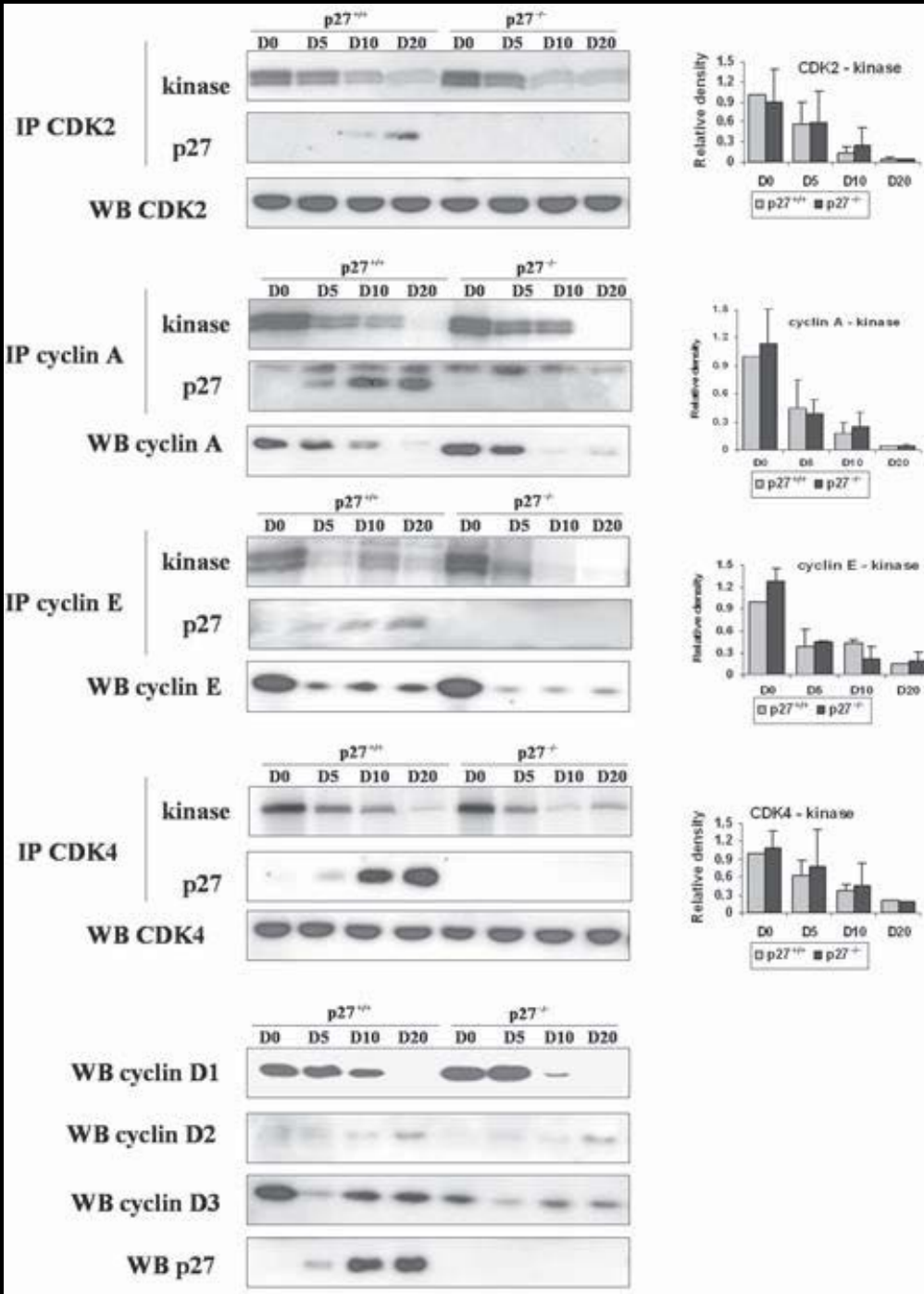
Kinase assay

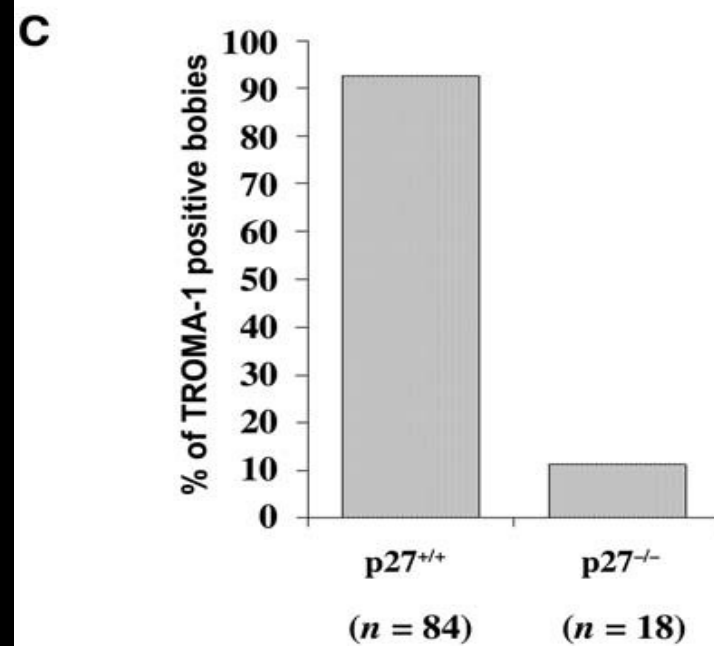
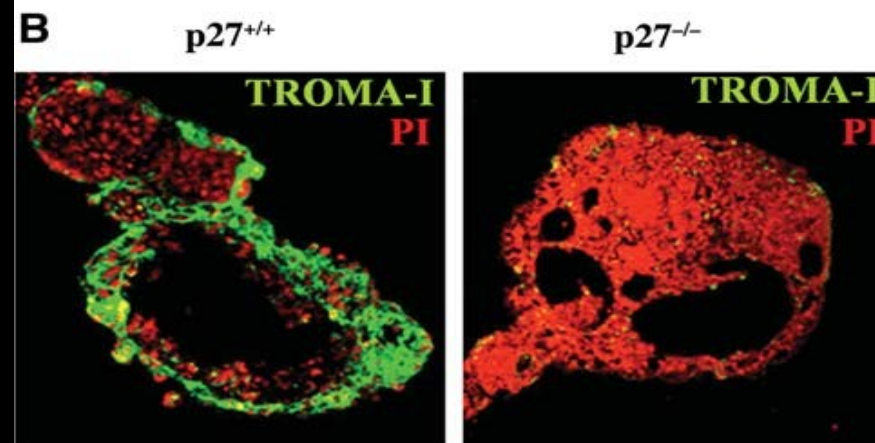
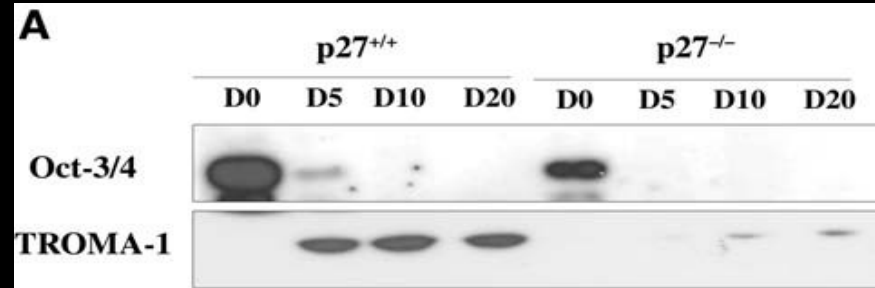


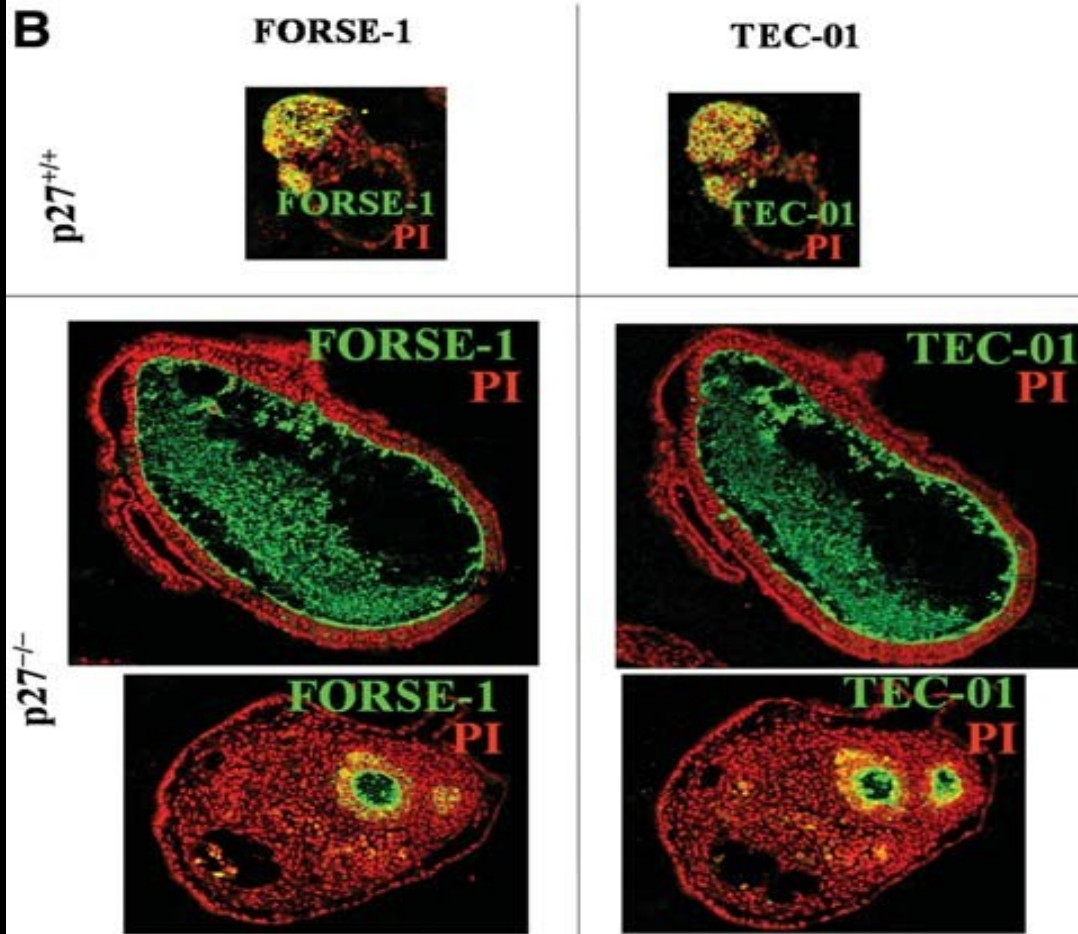
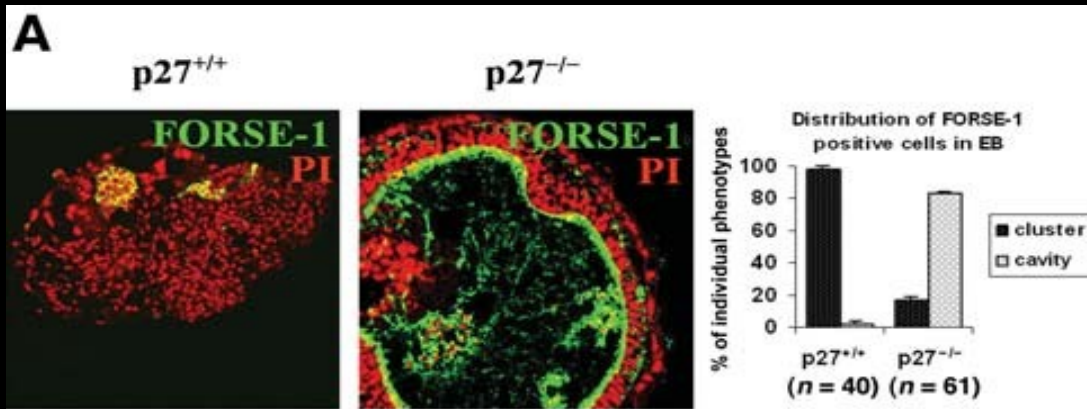
FACS

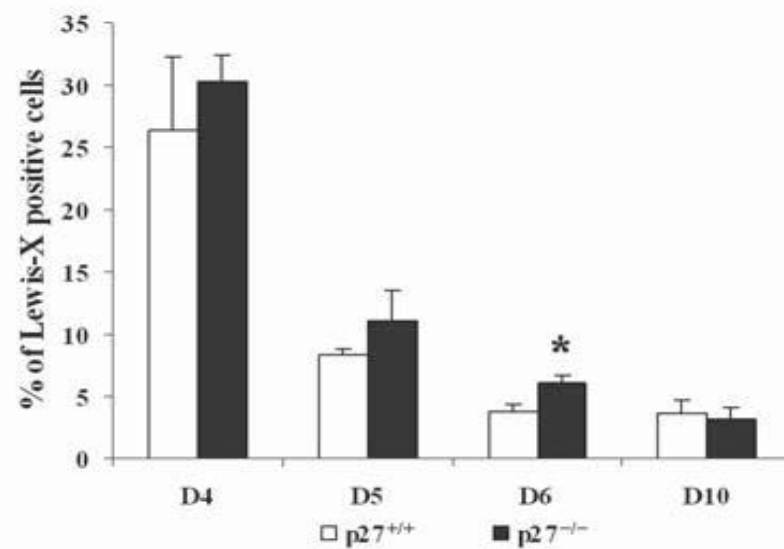
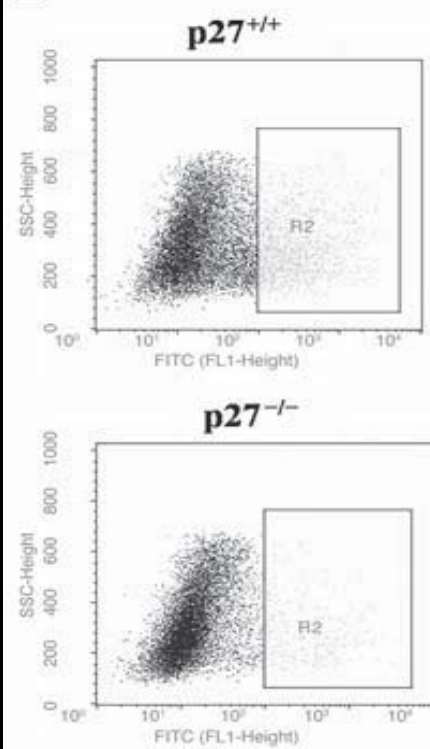
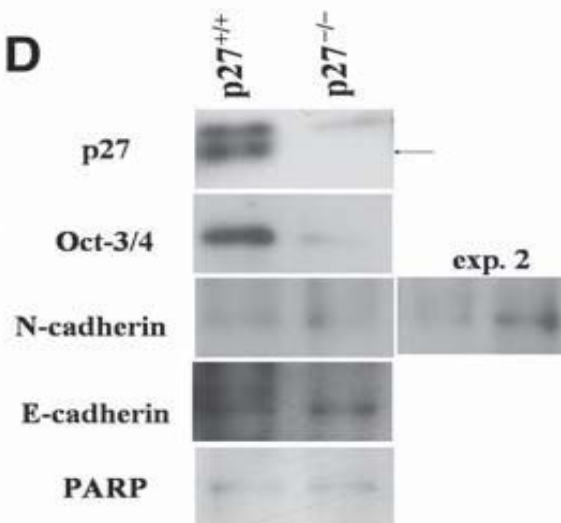


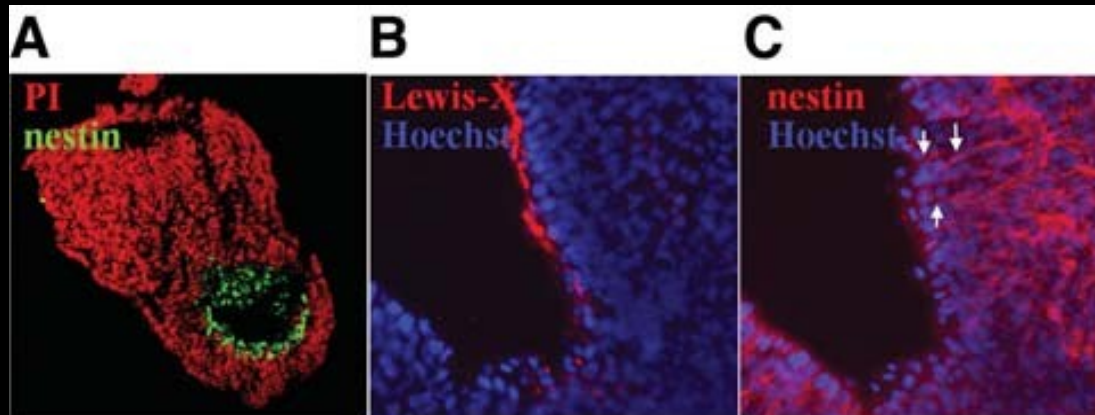
A**B**







A**B****C****D**



D **Scheme of differentiation protocol**

