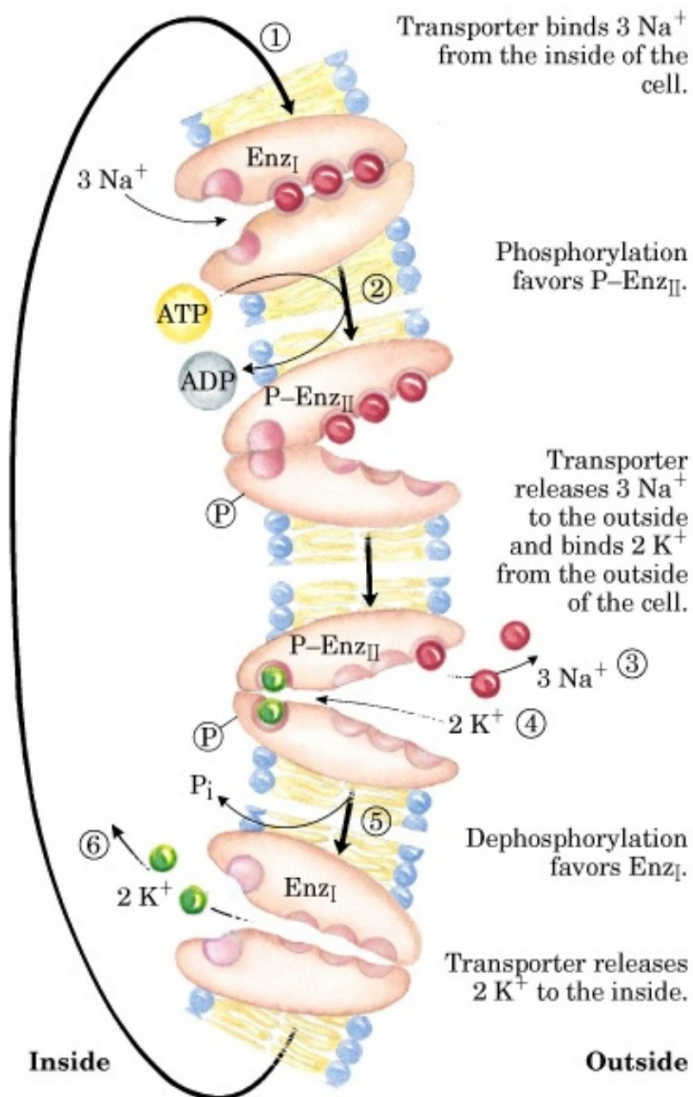


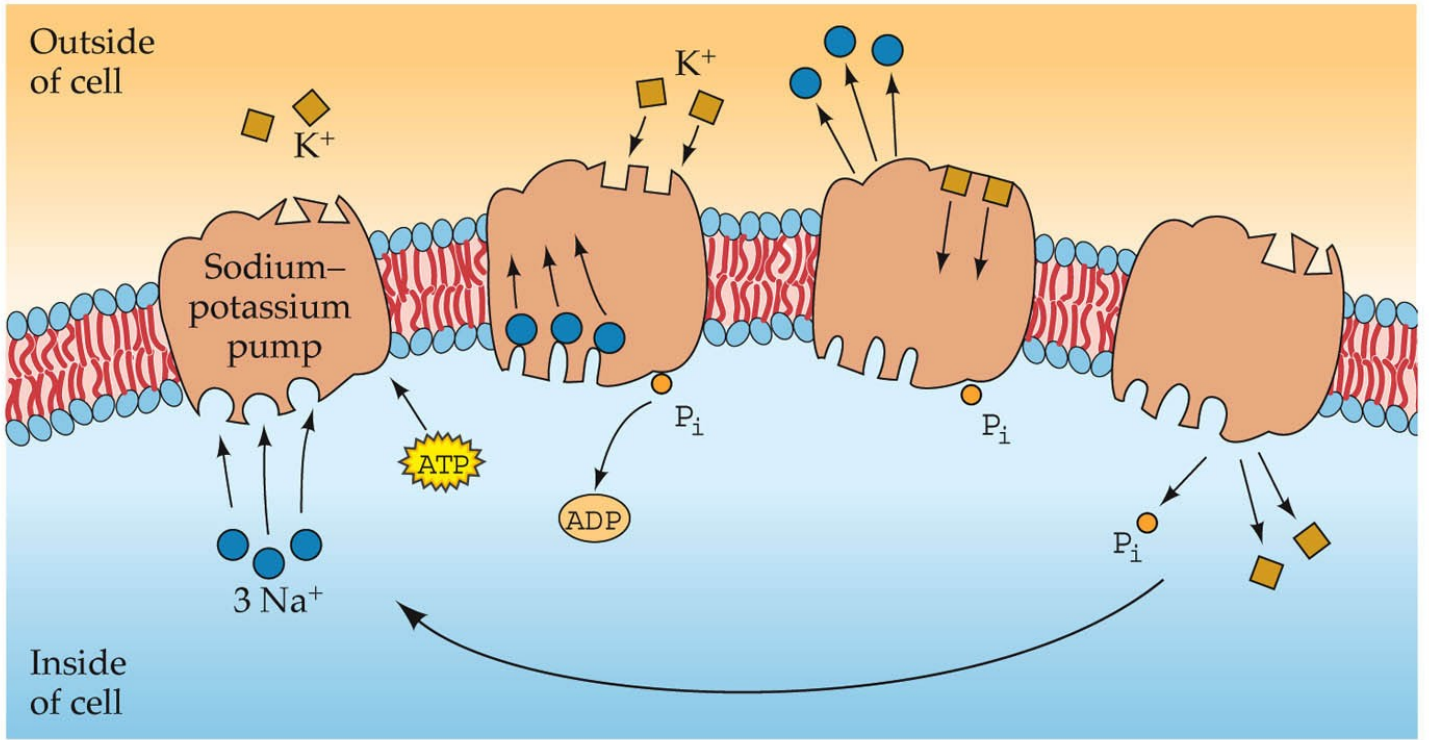
# 29. Regulace metabolismu a membránový transport

## Významné transportní systémy

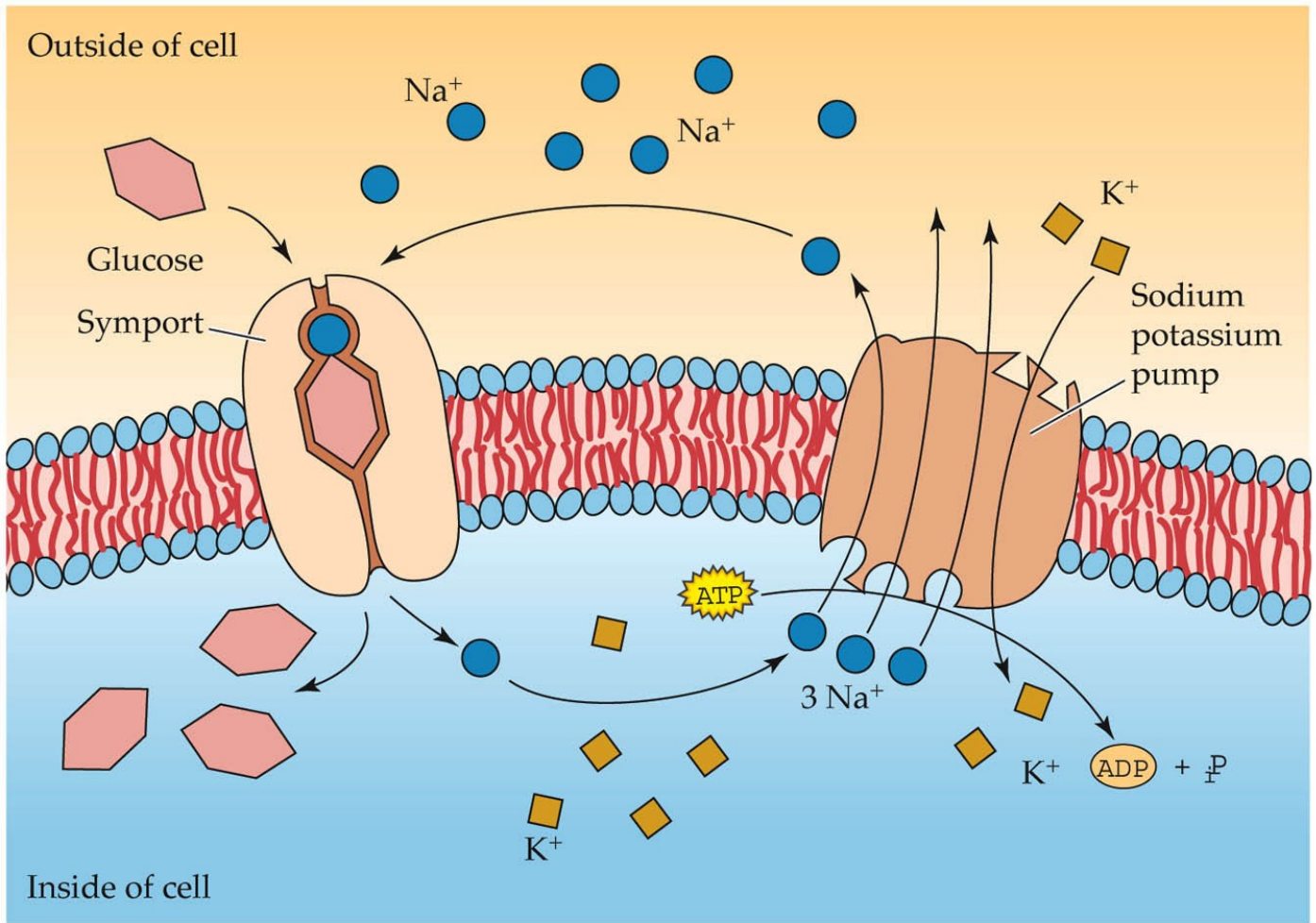
### NaK - ATPasa

### Mechanism of the Na-K transporter





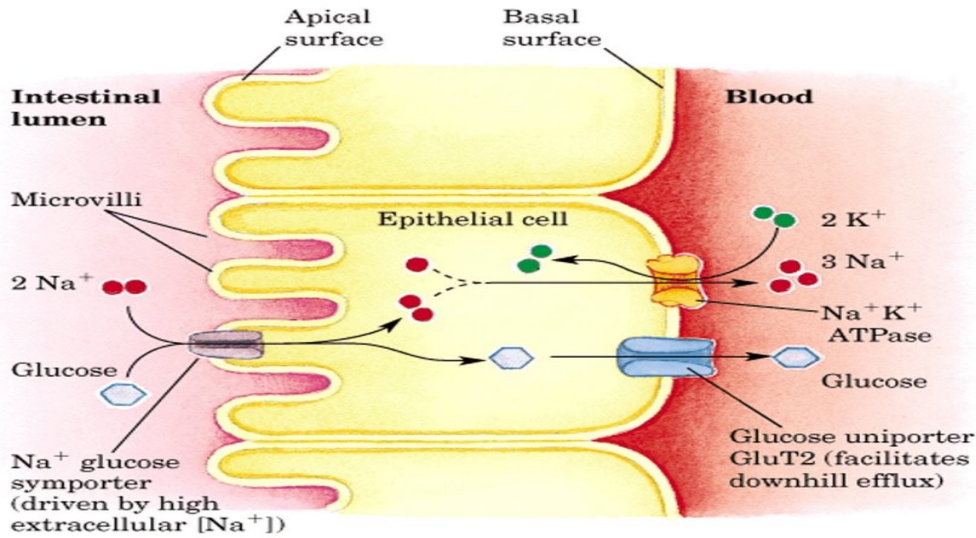
*LIFE: THE SCIENCE OF BIOLOGY, Seventh Edition, Figure 5.13 Primary Active Transport: The Sodium-Potassium Pump*  
© 2004 Sinauer Associates, Inc. and W. H. Freeman & Co.



LIFE: THE SCIENCE OF BIOLOGY, Seventh Edition, Figure 5.14 Secondary Active Transport  
 © 2004 Sinauer Associates, Inc. and W. H. Freeman & Co.

Transport glukosy

# Na<sup>+</sup>/glucose symporter



For charged ion transport:  $\Delta G = RT \ln \frac{[Na^+]_{in}}{[Na^+]_{out}} + n F \Delta E$

$$= 5.7 \text{ KJ} \log \frac{[Na^+]_{in}}{[Na^+]_{out}} + n \times 96.5 \Delta E$$

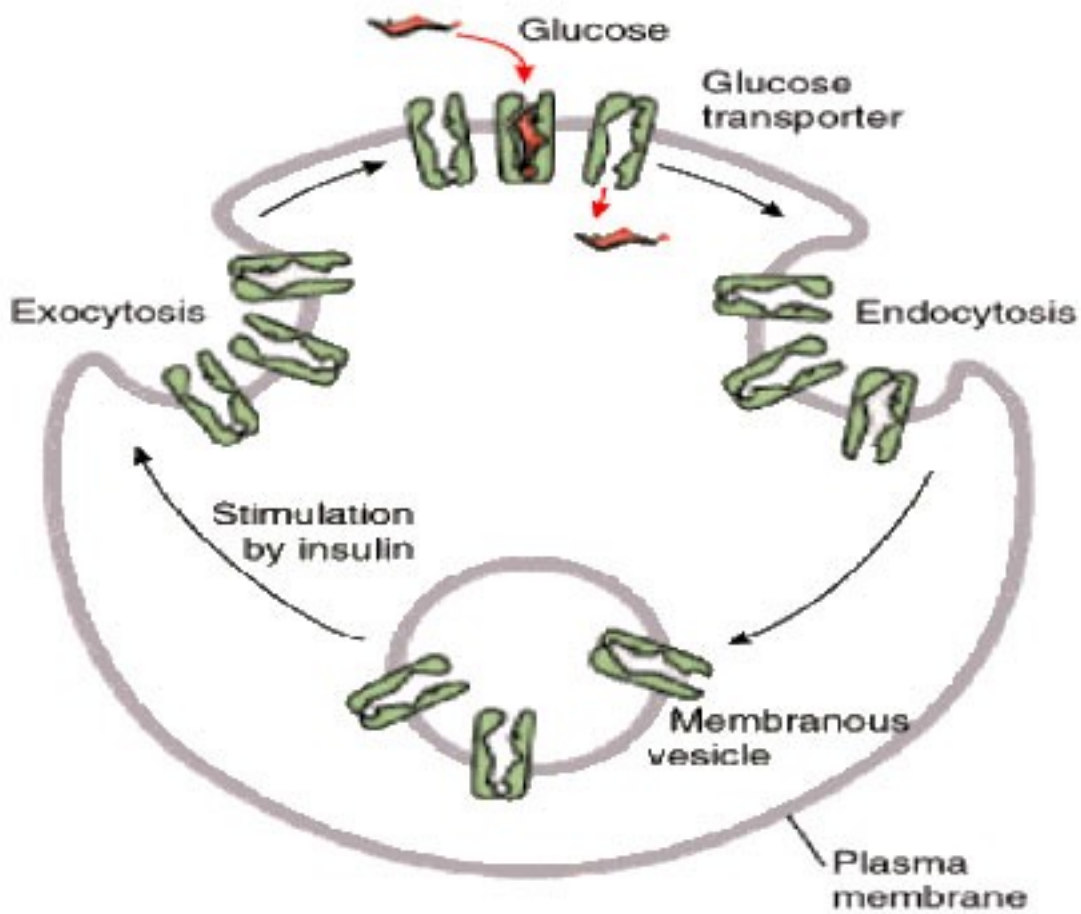
$$\text{Moving a Na}^+ \text{ ion into the cell releases } = 5.7 \log(12/145) + 1 \times 96.5 \times (-0.05) \\ = -6.2 \text{ KJ/mol} - 4.8 \text{ KJ/mol} = -11 \text{ KJ/mol}$$

If two Na<sup>+</sup> ions move, energy available to pump glucose is -22 KJ/mol.

This energy could transport glucose against a concentration gradient; it's magnitude would be governed by the available energy:

$$\Delta G = 22 \text{ KJ/mol} = 5.7 \text{ kJ/mol} \times \log \frac{[\text{glucose}]_{in}}{[\text{glucose}]_{out}}$$

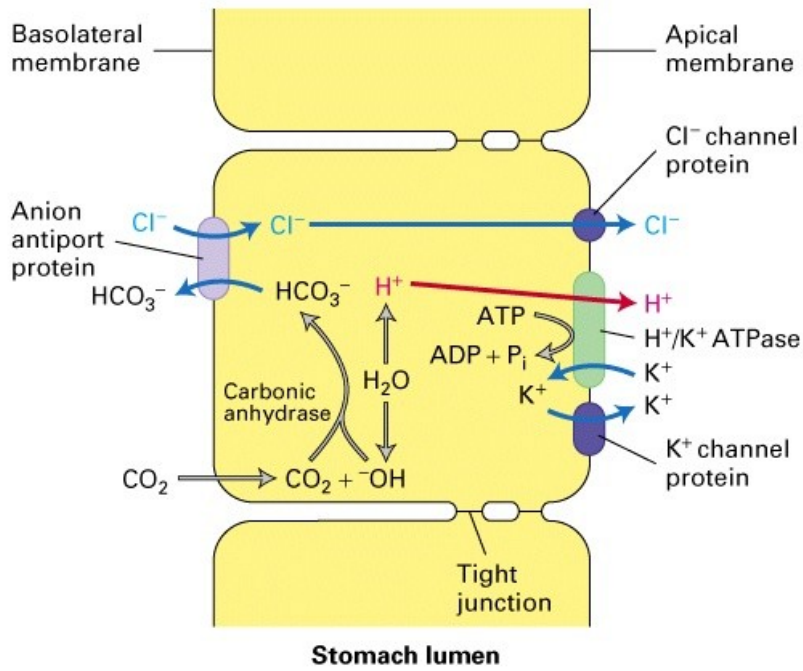
$$3.86 = \log \frac{[\text{glucose}]_{in}}{[\text{glucose}]_{out}} \text{ therefore } \frac{[\text{glucose}]_{in}}{[\text{glucose}]_{out}} = 7000.$$



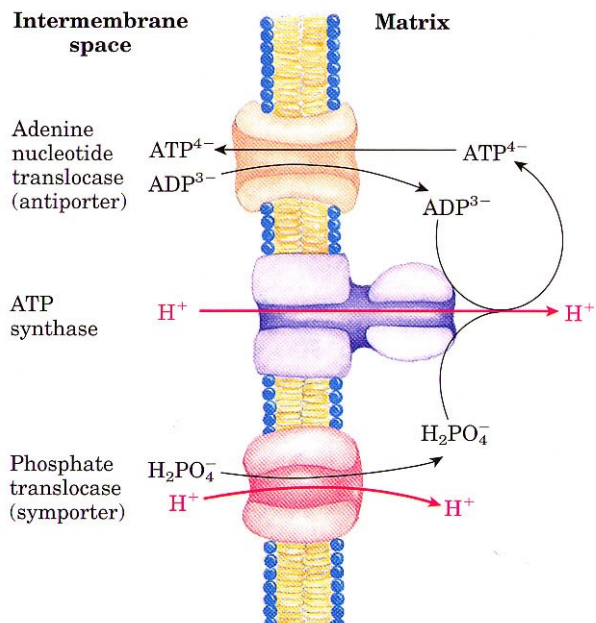
From D. Voet and J. G. Voet, *Biochemistry*, 2d ed., copyright © 1995, John Wiley & Sons, Inc. Reprinted by permission of John Wiley & Sons, Inc. Copyright 1999 John Wiley and Sons, Inc. All rights reserved.

REGULACE příjmu glukosy insulinem

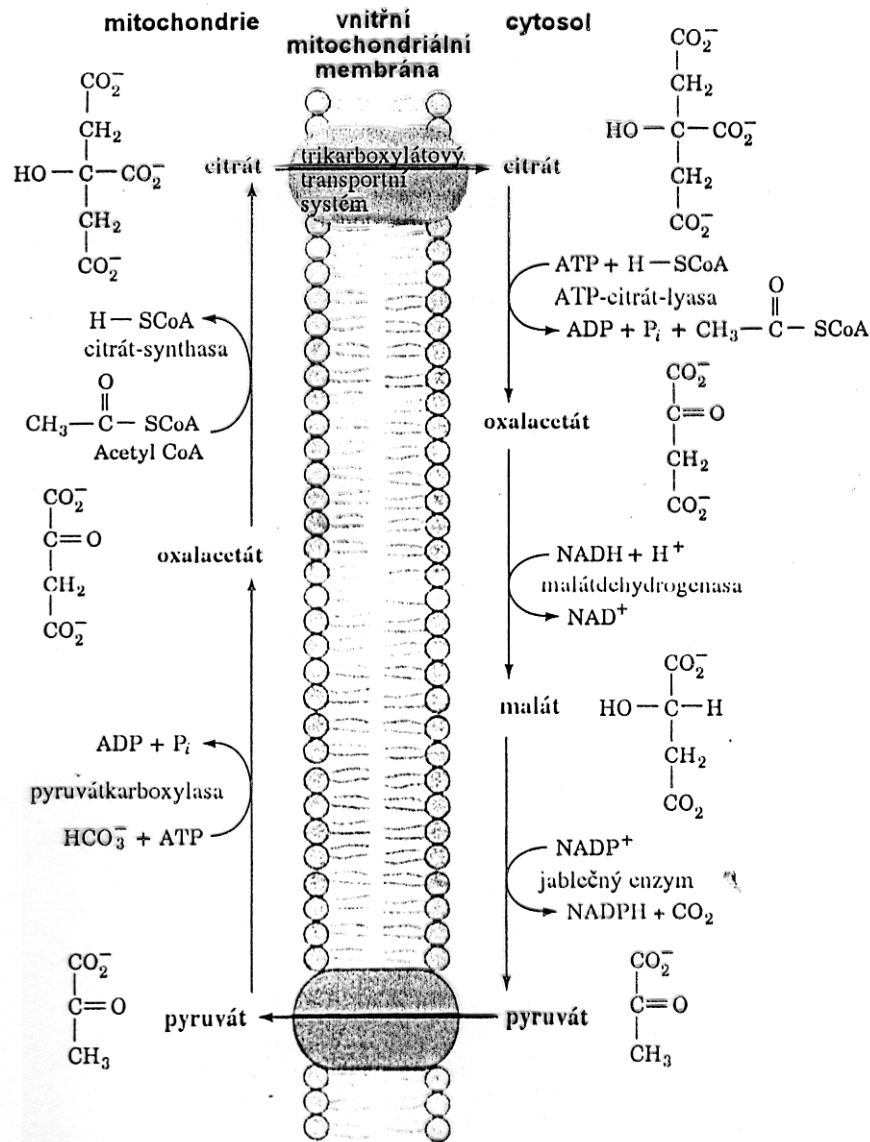
Transport HCl



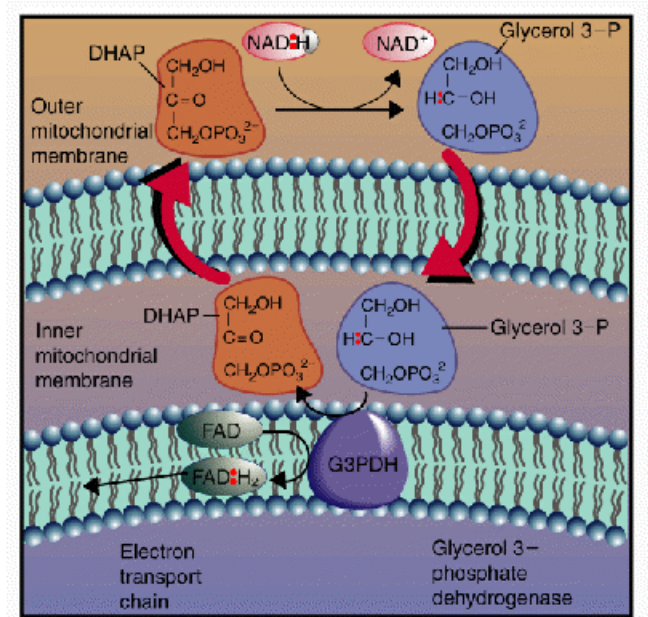
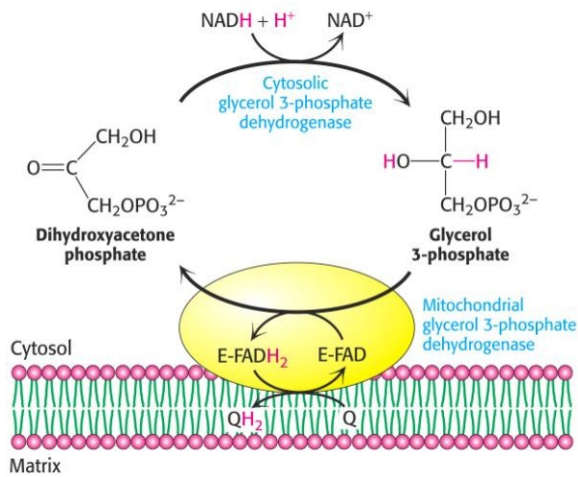
## Mitochondriální transporty



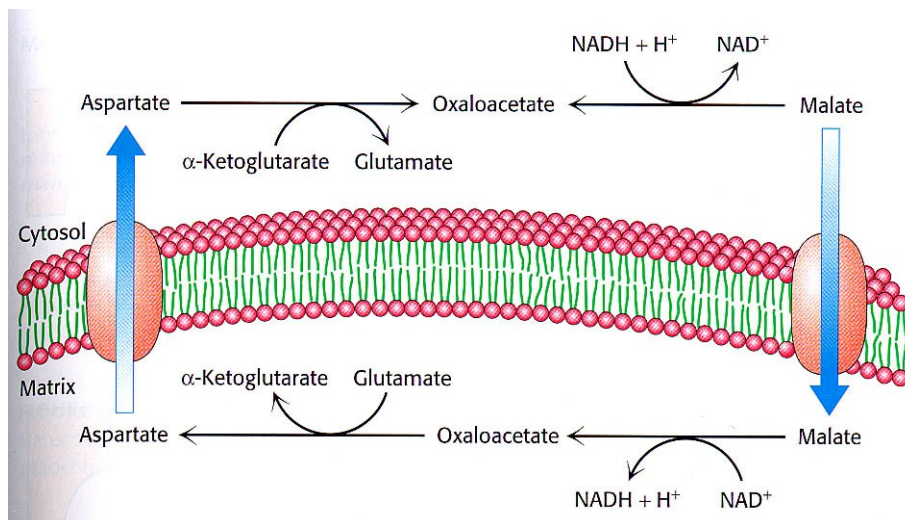
# Přenos AcetCoA vně mitochondrie



## Oxidoredukční člunky – problém oxidace cytosolického NADH



## GLYCEROLFOSFÁTOVÝ člunek





# Malate-aspartate shuttle

