

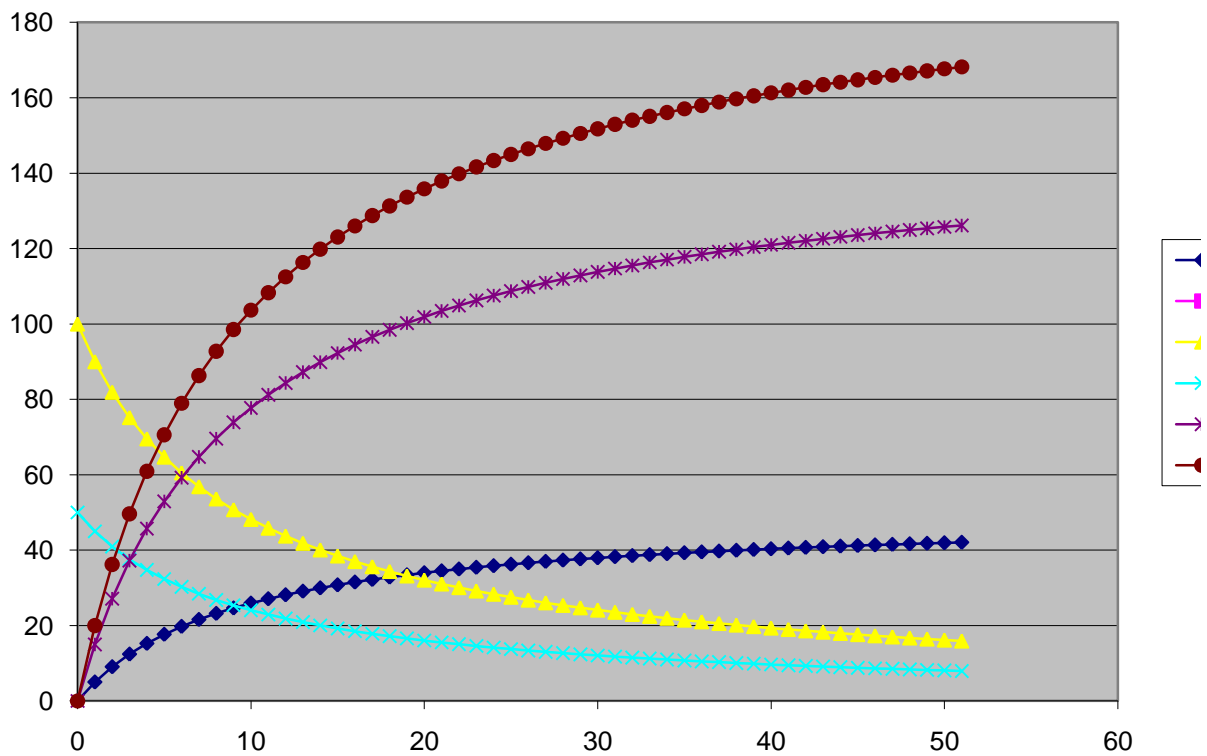
2A + B -----> 3C + 4D
 výchozí -2 -1 3 4
 100 50 0 0 mM

t	s	A	B	C	D	kontrola
0	0	100	50	0	0	
1	5	90	45	15	20	
2	9.05	81.9	40.95	27.15	36.2	
3	12.403805	75.19239	37.5962	37.21142	49.61522	
4	15.23075276	69.53849	34.76925	45.69226	60.92301	
5	17.64855386	64.70289	32.35145	52.94566	70.59422	
6	19.741786	60.51643	30.25821	59.22536	78.96714	
7	21.57290503	56.85419	28.42709	64.71872	86.29162	
8	23.18910448	53.62179	26.8109	69.56731	92.75642	
9	24.62675272	50.74649	25.37325	73.88026	98.50701	
10	25.91435608	48.17129	24.08564	77.74307	103.6574	
11	27.07459256	45.85081	22.92541	81.22378	108.2984	
12	28.12574118	43.74852	21.87426	84.37722	112.503	
13	29.08270757	41.83458	20.91729	87.24812	116.3308	
14	29.95777382	40.08445	20.04223	89.87332	119.8311	
15	30.76115548	38.47769	19.23884	92.28347	123.0446	
16	31.50142176	36.99716	18.49858	94.50427	126.0057	
17	32.18581655	35.62837	17.81418	96.55745	128.7433	
18	32.82050681	34.35899	17.17949	98.46152	131.282	
19	33.41077679	33.17845	16.58922	100.2323	133.6431	
20	33.96118144	32.07764	16.03882	101.8835	135.8447	
21	34.47566884	31.04866	15.52433	103.427	137.9027	
22	34.95767856	30.08464	15.04232	104.873	139.8307	
23	35.41022143	29.17956	14.58978	106.2307	141.6409	
24	35.8359447	28.32811	14.16406	107.5078	143.3438	
25	36.23718563	27.52563	13.76281	108.7116	144.9487	
26	36.61601575	26.76797	13.38398	109.848	146.4641	
27	36.97427782	26.05144	13.02572	110.9228	147.8971	
28	37.31361669	25.37277	12.68638	111.9409	149.2545	
29	37.63550534	24.72899	12.36449	112.9065	150.542	
30	37.94126679	24.11747	12.05873	113.8238	151.7651	
31	38.23209289	23.53581	11.76791	114.6963	152.9284	
32	38.50906016	22.98188	11.49094	115.5272	154.0362	
33	38.77314356	22.45371	11.22686	116.3194	155.0926	
34	39.02522817	21.94954	10.97477	117.0757	156.1009	
35	39.2661194	21.46776	10.73388	117.7984	157.0645	
36	39.49655179	21.0069	10.50345	118.4897	157.9862	
37	39.71719664	20.56561	10.2828	119.1516	158.8688	
38	39.92866873	20.14266	10.07133	119.786	159.7147	
39	40.13153215	19.73694	9.868468	120.3946	160.5261	
40	40.32630547	19.34739	9.673695	120.9789	161.3052	
41	40.5134662	18.97307	9.486534	121.5404	162.0539	
42	40.69345485	18.61309	9.306545	122.0804	162.7738	
43	40.86667841	18.26664	9.133322	122.6	163.4667	
44	41.03351354	17.93297	8.966486	123.1005	164.1341	
45	41.1943093	17.61138	8.805691	123.5829	164.7772	
46	41.34938968	17.30122	8.65061	124.0482	165.3976	
47	41.49905579	17.00189	8.500944	124.4972	165.9962	
48	41.6435879	16.71282	8.356412	124.9308	166.5744	

49	41.78324715	16.43351	8.216753	125.3497	167.133
50	41.9182772	16.16345	8.081723	125.7548	167.6731
51	42.04890569	15.90219	7.951094	126.1467	168.1956

kn = 0.001 sec-1
 dt0= 1 sec-1 expanze t 1
 rad vuci A 1
 rad vuci B 1

dopočty
 $l=l_0+Vl*s$





S

A

A

B

C

D