

A $\xrightarrow{k_1}$ B $\xrightarrow{k_2}$ C

| | | | | |
|----|---------------------|-----------------------|-----------------------|----------|
| | | Pocatecni koncentrace | time_step | 2.00E-02 |
| k1 | 0.3 s ⁻¹ | A0 | 1 mol l ⁻¹ | |
| k2 | 0.1 s ⁻¹ | B0 | 0 | |
| | | C0 | 0 | |

$$d[B]/dt = k_1[A] - k_2[B]$$

$$-d[A]/dt = k_1[A]$$

$$d[C]/dt = k_2[B]$$

Numericke reseni:

$$[A(t+dt)] = [A(t) - dt k_1 (A(t))]$$

$$[B(t+dt)] = [B(t) + dt \{ k_1 [A(t)] - k_2 [B(t)] \}]$$

$$[C(t+dt)] = [C(t) + dt k_2 (B(t))]$$

| t/ s | A/ M | B/ M | C/ M | Banalyt |
|----------|----------|----------|----------|----------|
| | 0 | 1 | 0 | 0 |
| 2.00E-02 | 9.94E-01 | 5.96E-03 | 1.19E-05 | 5.98E-03 |
| 4.00E-02 | 9.88E-01 | 1.19E-02 | 3.57E-05 | 0.011904 |
| 6.00E-02 | 9.82E-01 | 1.77E-02 | 7.12E-05 | 0.017785 |
| 8.00E-02 | 9.76E-01 | 2.36E-02 | 1.18E-04 | 0.023619 |
| 1.00E-01 | 9.70E-01 | 2.93E-02 | 1.77E-04 | 0.029406 |
| 1.20E-01 | 9.65E-01 | 3.51E-02 | 2.47E-04 | 0.035147 |
| 1.40E-01 | 9.59E-01 | 4.08E-02 | 3.29E-04 | 0.040842 |
| 1.60E-01 | 9.53E-01 | 4.64E-02 | 4.21E-04 | 0.04649 |
| 1.80E-01 | 9.47E-01 | 5.20E-02 | 5.25E-04 | 0.052093 |
| 2.00E-01 | 9.42E-01 | 5.75E-02 | 6.40E-04 | 0.057651 |
| 2.20E-01 | 9.36E-01 | 6.30E-02 | 7.67E-04 | 0.063164 |
| 2.40E-01 | 9.30E-01 | 6.85E-02 | 9.04E-04 | 0.068632 |
| 2.60E-01 | 9.25E-01 | 7.39E-02 | 1.05E-03 | 0.074056 |
| 2.80E-01 | 9.19E-01 | 7.93E-02 | 1.21E-03 | 0.079436 |
| 3.00E-01 | 9.14E-01 | 8.46E-02 | 1.38E-03 | 0.084772 |
| 3.20E-01 | 9.08E-01 | 8.99E-02 | 1.56E-03 | 0.090064 |
| 3.40E-01 | 9.03E-01 | 9.51E-02 | 1.75E-03 | 0.095313 |
| 3.60E-01 | 8.97E-01 | 1.00E-01 | 1.95E-03 | 0.100519 |
| 3.80E-01 | 8.92E-01 | 1.05E-01 | 2.16E-03 | 0.105682 |
| 4.00E-01 | 8.87E-01 | 1.11E-01 | 2.38E-03 | 0.110804 |
| 4.20E-01 | 8.81E-01 | 1.16E-01 | 2.61E-03 | 0.115882 |
| 4.40E-01 | 8.76E-01 | 1.21E-01 | 2.85E-03 | 0.120919 |
| 4.60E-01 | 8.71E-01 | 1.26E-01 | 3.11E-03 | 0.125915 |
| 4.80E-01 | 8.66E-01 | 1.31E-01 | 3.37E-03 | 0.130869 |
| 5.00E-01 | 8.60E-01 | 1.35E-01 | 3.64E-03 | 0.135782 |
| 5.20E-01 | 8.55E-01 | 1.40E-01 | 3.92E-03 | 0.140655 |
| 5.40E-01 | 8.50E-01 | 1.45E-01 | 4.21E-03 | 0.145486 |
| 5.60E-01 | 8.45E-01 | 1.50E-01 | 4.51E-03 | 0.150278 |
| 5.80E-01 | 8.40E-01 | 1.55E-01 | 4.82E-03 | 0.15503 |
| 6.00E-01 | 8.35E-01 | 1.59E-01 | 5.14E-03 | 0.159741 |
| 6.20E-01 | 8.30E-01 | 1.64E-01 | 5.46E-03 | 0.164414 |
| 6.40E-01 | 8.25E-01 | 1.69E-01 | 5.80E-03 | 0.169047 |
| 6.60E-01 | 8.20E-01 | 1.73E-01 | 6.15E-03 | 0.173642 |
| 6.80E-01 | 8.15E-01 | 1.78E-01 | 6.50E-03 | 0.178197 |
| 7.00E-01 | 8.10E-01 | 1.82E-01 | 6.87E-03 | 0.182714 |
| 7.20E-01 | 8.05E-01 | 1.87E-01 | 7.24E-03 | 0.187193 |
| 7.40E-01 | 8.00E-01 | 1.91E-01 | 7.62E-03 | 0.191634 |
| 7.60E-01 | 7.96E-01 | 1.96E-01 | 8.02E-03 | 0.196038 |
| 7.80E-01 | 7.91E-01 | 2.00E-01 | 8.42E-03 | 0.200404 |
| 8.00E-01 | 7.86E-01 | 2.04E-01 | 8.82E-03 | 0.204733 |
| 8.20E-01 | 7.81E-01 | 2.09E-01 | 9.24E-03 | 0.209025 |

| | | | | |
|----------|----------|----------|----------|----------|
| 8.40E-01 | 7.77E-01 | 2.13E-01 | 9.67E-03 | 0.21328 |
| 8.60E-01 | 7.72E-01 | 2.17E-01 | 1.01E-02 | 0.217498 |
| 8.80E-01 | 7.67E-01 | 2.21E-01 | 1.05E-02 | 0.221681 |
| 9.00E-01 | 7.63E-01 | 2.25E-01 | 1.10E-02 | 0.225828 |
| 9.20E-01 | 7.58E-01 | 2.29E-01 | 1.15E-02 | 0.229938 |
| 9.40E-01 | 7.54E-01 | 2.33E-01 | 1.19E-02 | 0.234014 |
| 9.60E-01 | 7.49E-01 | 2.37E-01 | 1.24E-02 | 0.238054 |
| 9.80E-01 | 7.45E-01 | 2.41E-01 | 1.29E-02 | 0.242059 |
| 1.00E+00 | 7.40E-01 | 2.45E-01 | 1.34E-02 | 0.246029 |
| 1.02E+00 | 7.36E-01 | 2.49E-01 | 1.39E-02 | 0.249964 |
| 1.04E+00 | 7.31E-01 | 2.53E-01 | 1.44E-02 | 0.253866 |
| 1.06E+00 | 7.27E-01 | 2.57E-01 | 1.49E-02 | 0.257733 |
| 1.08E+00 | 7.23E-01 | 2.61E-01 | 1.54E-02 | 0.261566 |
| 1.10E+00 | 7.18E-01 | 2.65E-01 | 1.59E-02 | 0.265366 |
| 1.12E+00 | 7.14E-01 | 2.68E-01 | 1.65E-02 | 0.269132 |
| 1.14E+00 | 7.10E-01 | 2.72E-01 | 1.70E-02 | 0.272865 |
| 1.16E+00 | 7.05E-01 | 2.76E-01 | 1.76E-02 | 0.276565 |
| 1.18E+00 | 7.01E-01 | 2.80E-01 | 1.81E-02 | 0.280232 |
| 1.20E+00 | 6.97E-01 | 2.83E-01 | 1.87E-02 | 0.283866 |
| 1.22E+00 | 6.93E-01 | 2.87E-01 | 1.93E-02 | 0.287468 |
| 1.24E+00 | 6.89E-01 | 2.90E-01 | 1.99E-02 | 0.291038 |
| 1.26E+00 | 6.84E-01 | 2.94E-01 | 2.04E-02 | 0.294577 |
| 1.28E+00 | 6.80E-01 | 2.97E-01 | 2.10E-02 | 0.298083 |
| 1.30E+00 | 6.76E-01 | 3.01E-01 | 2.16E-02 | 0.301558 |
| 1.32E+00 | 6.72E-01 | 3.04E-01 | 2.22E-02 | 0.305001 |
| 1.34E+00 | 6.68E-01 | 3.08E-01 | 2.29E-02 | 0.308414 |
| 1.36E+00 | 6.64E-01 | 3.11E-01 | 2.35E-02 | 0.311796 |
| 1.38E+00 | 6.60E-01 | 3.14E-01 | 2.41E-02 | 0.315147 |
| 1.40E+00 | 6.56E-01 | 3.18E-01 | 2.47E-02 | 0.318467 |
| 1.42E+00 | 6.52E-01 | 3.21E-01 | 2.54E-02 | 0.321757 |
| 1.44E+00 | 6.48E-01 | 3.24E-01 | 2.60E-02 | 0.325018 |
| 1.46E+00 | 6.44E-01 | 3.27E-01 | 2.67E-02 | 0.328248 |
| 1.48E+00 | 6.41E-01 | 3.31E-01 | 2.73E-02 | 0.331449 |
| 1.50E+00 | 6.37E-01 | 3.34E-01 | 2.80E-02 | 0.33462 |
| 1.52E+00 | 6.33E-01 | 3.37E-01 | 2.87E-02 | 0.337762 |
| 1.54E+00 | 6.29E-01 | 3.40E-01 | 2.94E-02 | 0.340875 |
| 1.56E+00 | 6.25E-01 | 3.43E-01 | 3.01E-02 | 0.343959 |
| 1.58E+00 | 6.22E-01 | 3.46E-01 | 3.07E-02 | 0.347014 |
| 1.60E+00 | 6.18E-01 | 3.49E-01 | 3.14E-02 | 0.350041 |
| 1.62E+00 | 6.14E-01 | 3.52E-01 | 3.22E-02 | 0.353039 |
| 1.64E+00 | 6.10E-01 | 3.55E-01 | 3.29E-02 | 0.356009 |
| 1.66E+00 | 6.07E-01 | 3.58E-01 | 3.36E-02 | 0.358952 |
| 1.68E+00 | 6.03E-01 | 3.61E-01 | 3.43E-02 | 0.361867 |
| 1.70E+00 | 6.00E-01 | 3.64E-01 | 3.50E-02 | 0.364754 |
| 1.72E+00 | 5.96E-01 | 3.67E-01 | 3.58E-02 | 0.367614 |
| 1.74E+00 | 5.92E-01 | 3.69E-01 | 3.65E-02 | 0.370446 |
| 1.76E+00 | 5.89E-01 | 3.72E-01 | 3.72E-02 | 0.373252 |
| 1.78E+00 | 5.85E-01 | 3.75E-01 | 3.80E-02 | 0.376031 |
| 1.80E+00 | 5.82E-01 | 3.78E-01 | 3.87E-02 | 0.378783 |
| 1.82E+00 | 5.78E-01 | 3.80E-01 | 3.95E-02 | 0.381509 |
| 1.84E+00 | 5.75E-01 | 3.83E-01 | 4.03E-02 | 0.384208 |
| 1.86E+00 | 5.71E-01 | 3.86E-01 | 4.10E-02 | 0.386881 |
| 1.88E+00 | 5.68E-01 | 3.88E-01 | 4.18E-02 | 0.389529 |
| 1.90E+00 | 5.65E-01 | 3.91E-01 | 4.26E-02 | 0.392151 |
| 1.92E+00 | 5.61E-01 | 3.94E-01 | 4.34E-02 | 0.394747 |
| 1.94E+00 | 5.58E-01 | 3.96E-01 | 4.42E-02 | 0.397317 |

| | | | | |
|----------|----------|----------|----------|----------|
| 1.96E+00 | 5.54E-01 | 3.99E-01 | 4.50E-02 | 0.399863 |
| 1.98E+00 | 5.51E-01 | 4.01E-01 | 4.58E-02 | 0.402383 |
| 2.00E+00 | 5.48E-01 | 4.04E-01 | 4.66E-02 | 0.404879 |
| 2.02E+00 | 5.45E-01 | 4.06E-01 | 4.74E-02 | 0.407349 |
| 2.04E+00 | 5.41E-01 | 4.09E-01 | 4.82E-02 | 0.409796 |
| 2.06E+00 | 5.38E-01 | 4.11E-01 | 4.90E-02 | 0.412218 |
| 2.08E+00 | 5.35E-01 | 4.13E-01 | 4.99E-02 | 0.414615 |
| 2.10E+00 | 5.32E-01 | 4.16E-01 | 5.07E-02 | 0.416989 |
| 2.12E+00 | 5.28E-01 | 4.18E-01 | 5.15E-02 | 0.419338 |
| 2.14E+00 | 5.25E-01 | 4.20E-01 | 5.24E-02 | 0.421664 |
| 2.16E+00 | 5.22E-01 | 4.23E-01 | 5.32E-02 | 0.423967 |
| 2.18E+00 | 5.19E-01 | 4.25E-01 | 5.41E-02 | 0.426246 |
| 2.20E+00 | 5.16E-01 | 4.27E-01 | 5.49E-02 | 0.428501 |
| 2.22E+00 | 5.13E-01 | 4.29E-01 | 5.58E-02 | 0.430734 |
| 2.24E+00 | 5.10E-01 | 4.32E-01 | 5.66E-02 | 0.432943 |
| 2.26E+00 | 5.07E-01 | 4.34E-01 | 5.75E-02 | 0.43513 |
| 2.28E+00 | 5.04E-01 | 4.36E-01 | 5.84E-02 | 0.437295 |
| 2.30E+00 | 5.01E-01 | 4.38E-01 | 5.93E-02 | 0.439436 |
| 2.32E+00 | 4.98E-01 | 4.40E-01 | 6.01E-02 | 0.441556 |
| 2.34E+00 | 4.95E-01 | 4.42E-01 | 6.10E-02 | 0.443653 |
| 2.36E+00 | 4.92E-01 | 4.44E-01 | 6.19E-02 | 0.445728 |
| 2.38E+00 | 4.89E-01 | 4.46E-01 | 6.28E-02 | 0.447782 |
| 2.40E+00 | 4.86E-01 | 4.48E-01 | 6.37E-02 | 0.449813 |
| 2.42E+00 | 4.83E-01 | 4.50E-01 | 6.46E-02 | 0.451824 |
| 2.44E+00 | 4.80E-01 | 4.52E-01 | 6.55E-02 | 0.453812 |
| 2.46E+00 | 4.77E-01 | 4.54E-01 | 6.64E-02 | 0.45578 |
| 2.48E+00 | 4.74E-01 | 4.56E-01 | 6.73E-02 | 0.457726 |
| 2.50E+00 | 4.71E-01 | 4.58E-01 | 6.83E-02 | 0.459651 |
| 2.52E+00 | 4.68E-01 | 4.60E-01 | 6.92E-02 | 0.461556 |
| 2.54E+00 | 4.66E-01 | 4.62E-01 | 7.01E-02 | 0.46344 |
| 2.56E+00 | 4.63E-01 | 4.64E-01 | 7.10E-02 | 0.465303 |
| 2.58E+00 | 4.60E-01 | 4.66E-01 | 7.20E-02 | 0.467146 |
| 2.60E+00 | 4.57E-01 | 4.67E-01 | 7.29E-02 | 0.468968 |
| 2.62E+00 | 4.55E-01 | 4.69E-01 | 7.38E-02 | 0.470771 |
| 2.64E+00 | 4.52E-01 | 4.71E-01 | 7.48E-02 | 0.472553 |
| 2.66E+00 | 4.49E-01 | 4.73E-01 | 7.57E-02 | 0.474316 |
| 2.68E+00 | 4.46E-01 | 4.75E-01 | 7.67E-02 | 0.476059 |
| 2.70E+00 | 4.44E-01 | 4.76E-01 | 7.76E-02 | 0.477782 |
| 2.72E+00 | 4.41E-01 | 4.78E-01 | 7.86E-02 | 0.479486 |
| 2.74E+00 | 4.38E-01 | 4.80E-01 | 7.95E-02 | 0.481171 |
| 2.76E+00 | 4.36E-01 | 4.81E-01 | 8.05E-02 | 0.482836 |
| 2.78E+00 | 4.33E-01 | 4.83E-01 | 8.15E-02 | 0.484482 |
| 2.80E+00 | 4.31E-01 | 4.85E-01 | 8.24E-02 | 0.48611 |
| 2.82E+00 | 4.28E-01 | 4.86E-01 | 8.34E-02 | 0.487719 |
| 2.84E+00 | 4.25E-01 | 4.88E-01 | 8.44E-02 | 0.489309 |
| 2.86E+00 | 4.23E-01 | 4.89E-01 | 8.54E-02 | 0.49088 |
| 2.88E+00 | 4.20E-01 | 4.91E-01 | 8.63E-02 | 0.492433 |
| 2.90E+00 | 4.18E-01 | 4.92E-01 | 8.73E-02 | 0.493968 |
| 2.92E+00 | 4.15E-01 | 4.94E-01 | 8.83E-02 | 0.495485 |
| 2.94E+00 | 4.13E-01 | 4.95E-01 | 8.93E-02 | 0.496983 |
| 2.96E+00 | 4.10E-01 | 4.97E-01 | 9.03E-02 | 0.498464 |
| 2.98E+00 | 4.08E-01 | 4.98E-01 | 9.13E-02 | 0.499927 |
| 3.00E+00 | 4.05E-01 | 5.00E-01 | 9.23E-02 | 0.501373 |
| 3.02E+00 | 4.03E-01 | 5.01E-01 | 9.33E-02 | 0.502801 |
| 3.04E+00 | 4.01E-01 | 5.02E-01 | 9.43E-02 | 0.504211 |
| 3.06E+00 | 3.98E-01 | 5.04E-01 | 9.53E-02 | 0.505605 |

| | | | | |
|----------|----------|----------|----------|----------|
| 3.08E+00 | 3.96E-01 | 5.05E-01 | 9.63E-02 | 0.506981 |
| 3.10E+00 | 3.93E-01 | 5.07E-01 | 9.73E-02 | 0.50834 |
| 3.12E+00 | 3.91E-01 | 5.08E-01 | 9.83E-02 | 0.509682 |
| 3.14E+00 | 3.89E-01 | 5.09E-01 | 9.94E-02 | 0.511008 |
| 3.16E+00 | 3.86E-01 | 5.11E-01 | 1.00E-01 | 0.512316 |
| 3.18E+00 | 3.84E-01 | 5.12E-01 | 1.01E-01 | 0.513608 |
| 3.20E+00 | 3.82E-01 | 5.13E-01 | 1.02E-01 | 0.514884 |
| 3.22E+00 | 3.79E-01 | 5.14E-01 | 1.03E-01 | 0.516144 |
| 3.24E+00 | 3.77E-01 | 5.16E-01 | 1.04E-01 | 0.517387 |
| 3.26E+00 | 3.75E-01 | 5.17E-01 | 1.06E-01 | 0.518614 |
| 3.28E+00 | 3.73E-01 | 5.18E-01 | 1.07E-01 | 0.519825 |
| 3.30E+00 | 3.70E-01 | 5.19E-01 | 1.08E-01 | 0.521021 |
| 3.32E+00 | 3.68E-01 | 5.20E-01 | 1.09E-01 | 0.5222 |
| 3.34E+00 | 3.66E-01 | 5.22E-01 | 1.10E-01 | 0.523364 |
| 3.36E+00 | 3.64E-01 | 5.23E-01 | 1.11E-01 | 0.524512 |
| 3.38E+00 | 3.62E-01 | 5.24E-01 | 1.12E-01 | 0.525645 |
| 3.40E+00 | 3.59E-01 | 5.25E-01 | 1.13E-01 | 0.526763 |
| 3.42E+00 | 3.57E-01 | 5.26E-01 | 1.14E-01 | 0.527866 |
| 3.44E+00 | 3.55E-01 | 5.27E-01 | 1.15E-01 | 0.528953 |
| 3.46E+00 | 3.53E-01 | 5.28E-01 | 1.16E-01 | 0.530025 |
| 3.48E+00 | 3.51E-01 | 5.29E-01 | 1.17E-01 | 0.531083 |
| 3.50E+00 | 3.49E-01 | 5.30E-01 | 1.18E-01 | 0.532126 |
| 3.52E+00 | 3.47E-01 | 5.31E-01 | 1.19E-01 | 0.533154 |
| 3.54E+00 | 3.45E-01 | 5.32E-01 | 1.20E-01 | 0.534167 |
| 3.56E+00 | 3.43E-01 | 5.33E-01 | 1.21E-01 | 0.535166 |
| 3.58E+00 | 3.41E-01 | 5.34E-01 | 1.22E-01 | 0.536151 |
| 3.60E+00 | 3.38E-01 | 5.35E-01 | 1.23E-01 | 0.537121 |
| 3.62E+00 | 3.36E-01 | 5.36E-01 | 1.25E-01 | 0.538077 |
| 3.64E+00 | 3.34E-01 | 5.37E-01 | 1.26E-01 | 0.53902 |
| 3.66E+00 | 3.32E-01 | 5.38E-01 | 1.27E-01 | 0.539948 |
| 3.68E+00 | 3.30E-01 | 5.39E-01 | 1.28E-01 | 0.540862 |
| 3.70E+00 | 3.28E-01 | 5.40E-01 | 1.29E-01 | 0.541763 |
| 3.72E+00 | 3.26E-01 | 5.41E-01 | 1.30E-01 | 0.54265 |
| 3.74E+00 | 3.25E-01 | 5.42E-01 | 1.31E-01 | 0.543524 |
| 3.76E+00 | 3.23E-01 | 5.42E-01 | 1.32E-01 | 0.544384 |
| 3.78E+00 | 3.21E-01 | 5.43E-01 | 1.33E-01 | 0.54523 |
| 3.80E+00 | 3.19E-01 | 5.44E-01 | 1.34E-01 | 0.546064 |
| 3.82E+00 | 3.17E-01 | 5.45E-01 | 1.35E-01 | 0.546884 |
| 3.84E+00 | 3.15E-01 | 5.46E-01 | 1.36E-01 | 0.547691 |
| 3.86E+00 | 3.13E-01 | 5.46E-01 | 1.38E-01 | 0.548485 |
| 3.88E+00 | 3.11E-01 | 5.47E-01 | 1.39E-01 | 0.549266 |
| 3.90E+00 | 3.09E-01 | 5.48E-01 | 1.40E-01 | 0.550035 |
| 3.92E+00 | 3.07E-01 | 5.49E-01 | 1.41E-01 | 0.550791 |
| 3.94E+00 | 3.06E-01 | 5.49E-01 | 1.42E-01 | 0.551534 |
| 3.96E+00 | 3.04E-01 | 5.50E-01 | 1.43E-01 | 0.552265 |
| 3.98E+00 | 3.02E-01 | 5.51E-01 | 1.44E-01 | 0.552983 |
| 4.00E+00 | 3.00E-01 | 5.52E-01 | 1.45E-01 | 0.553689 |
| 4.02E+00 | 2.98E-01 | 5.52E-01 | 1.46E-01 | 0.554382 |
| 4.04E+00 | 2.97E-01 | 5.53E-01 | 1.47E-01 | 0.555064 |
| 4.06E+00 | 2.95E-01 | 5.54E-01 | 1.49E-01 | 0.555733 |
| 4.08E+00 | 2.93E-01 | 5.54E-01 | 1.50E-01 | 0.556391 |
| 4.10E+00 | 2.91E-01 | 5.55E-01 | 1.51E-01 | 0.557037 |
| 4.12E+00 | 2.89E-01 | 5.56E-01 | 1.52E-01 | 0.55767 |
| 4.14E+00 | 2.88E-01 | 5.56E-01 | 1.53E-01 | 0.558292 |
| 4.16E+00 | 2.86E-01 | 5.57E-01 | 1.54E-01 | 0.558903 |
| 4.18E+00 | 2.84E-01 | 5.57E-01 | 1.55E-01 | 0.559502 |

| | | | | |
|----------|----------|----------|----------|----------|
| 4.20E+00 | 2.83E-01 | 5.58E-01 | 1.56E-01 | 0.560089 |
| 4.22E+00 | 2.81E-01 | 5.58E-01 | 1.57E-01 | 0.560665 |
| 4.24E+00 | 2.79E-01 | 5.59E-01 | 1.59E-01 | 0.561123 |
| 4.26E+00 | 2.78E-01 | 5.60E-01 | 1.60E-01 | 0.561784 |
| 4.28E+00 | 2.76E-01 | 5.60E-01 | 1.61E-01 | 0.562326 |
| 4.30E+00 | 2.74E-01 | 5.61E-01 | 1.62E-01 | 0.562857 |
| 4.32E+00 | 2.73E-01 | 5.61E-01 | 1.63E-01 | 0.563378 |
| 4.34E+00 | 2.71E-01 | 5.62E-01 | 1.64E-01 | 0.563887 |
| 4.36E+00 | 2.69E-01 | 5.62E-01 | 1.65E-01 | 0.564386 |
| 4.38E+00 | 2.68E-01 | 5.63E-01 | 1.66E-01 | 0.564874 |
| 4.40E+00 | 2.66E-01 | 5.63E-01 | 1.68E-01 | 0.565352 |
| 4.42E+00 | 2.64E-01 | 5.64E-01 | 1.69E-01 | 0.565819 |
| 4.44E+00 | 2.63E-01 | 5.64E-01 | 1.70E-01 | 0.566275 |
| 4.46E+00 | 2.61E-01 | 5.64E-01 | 1.71E-01 | 0.566721 |
| 4.48E+00 | 2.60E-01 | 5.65E-01 | 1.72E-01 | 0.567156 |
| 4.50E+00 | 2.58E-01 | 5.65E-01 | 1.73E-01 | 0.567582 |
| 4.52E+00 | 2.57E-01 | 5.66E-01 | 1.74E-01 | 0.567997 |
| 4.54E+00 | 2.55E-01 | 5.66E-01 | 1.75E-01 | 0.568402 |
| 4.56E+00 | 2.54E-01 | 5.67E-01 | 1.77E-01 | 0.568797 |
| 4.58E+00 | 2.52E-01 | 5.67E-01 | 1.78E-01 | 0.569182 |
| 4.60E+00 | 2.51E-01 | 5.67E-01 | 1.79E-01 | 0.569558 |
| 4.62E+00 | 2.49E-01 | 5.68E-01 | 1.80E-01 | 0.569923 |
| 4.64E+00 | 2.48E-01 | 5.68E-01 | 1.81E-01 | 0.570279 |
| 4.66E+00 | 2.46E-01 | 5.68E-01 | 1.82E-01 | 0.570625 |
| 4.68E+00 | 2.45E-01 | 5.69E-01 | 1.83E-01 | 0.570961 |
| 4.70E+00 | 2.43E-01 | 5.69E-01 | 1.85E-01 | 0.571288 |
| 4.72E+00 | 2.42E-01 | 5.69E-01 | 1.86E-01 | 0.571606 |
| 4.74E+00 | 2.40E-01 | 5.70E-01 | 1.87E-01 | 0.571914 |
| 4.76E+00 | 2.39E-01 | 5.70E-01 | 1.88E-01 | 0.572213 |
| 4.78E+00 | 2.37E-01 | 5.70E-01 | 1.89E-01 | 0.572503 |
| 4.80E+00 | 2.36E-01 | 5.70E-01 | 1.90E-01 | 0.572783 |
| 4.82E+00 | 2.34E-01 | 5.71E-01 | 1.91E-01 | 0.573055 |
| 4.84E+00 | 2.33E-01 | 5.71E-01 | 1.93E-01 | 0.573317 |
| 4.86E+00 | 2.32E-01 | 5.71E-01 | 1.94E-01 | 0.573571 |
| 4.88E+00 | 2.30E-01 | 5.71E-01 | 1.95E-01 | 0.573816 |
| 4.90E+00 | 2.29E-01 | 5.72E-01 | 1.96E-01 | 0.574051 |
| 4.92E+00 | 2.28E-01 | 5.72E-01 | 1.97E-01 | 0.574278 |
| 4.94E+00 | 2.26E-01 | 5.72E-01 | 1.98E-01 | 0.574497 |
| 4.96E+00 | 2.25E-01 | 5.72E-01 | 1.99E-01 | 0.574707 |
| 4.98E+00 | 2.23E-01 | 5.73E-01 | 2.01E-01 | 0.574908 |
| 5.00E+00 | 2.22E-01 | 5.73E-01 | 2.02E-01 | 0.575101 |
| 5.02E+00 | 2.21E-01 | 5.73E-01 | 2.03E-01 | 0.575285 |
| 5.04E+00 | 2.19E-01 | 5.73E-01 | 2.04E-01 | 0.575461 |
| 5.06E+00 | 2.18E-01 | 5.73E-01 | 2.05E-01 | 0.575629 |
| 5.08E+00 | 2.17E-01 | 5.73E-01 | 2.06E-01 | 0.575788 |
| 5.10E+00 | 2.16E-01 | 5.74E-01 | 2.07E-01 | 0.57594 |
| 5.12E+00 | 2.14E-01 | 5.74E-01 | 2.09E-01 | 0.576083 |
| 5.14E+00 | 2.13E-01 | 5.74E-01 | 2.10E-01 | 0.576218 |
| 5.16E+00 | 2.12E-01 | 5.74E-01 | 2.11E-01 | 0.576346 |
| 5.18E+00 | 2.10E-01 | 5.74E-01 | 2.12E-01 | 0.576465 |
| 5.20E+00 | 2.09E-01 | 5.74E-01 | 2.13E-01 | 0.576577 |
| 5.22E+00 | 2.08E-01 | 5.74E-01 | 2.14E-01 | 0.57668 |
| 5.24E+00 | 2.07E-01 | 5.74E-01 | 2.15E-01 | 0.576777 |
| 5.26E+00 | 2.05E-01 | 5.74E-01 | 2.17E-01 | 0.576865 |
| 5.28E+00 | 2.04E-01 | 5.74E-01 | 2.18E-01 | 0.576946 |
| 5.30E+00 | 2.03E-01 | 5.75E-01 | 2.19E-01 | 0.577019 |

| | | | | |
|----------|----------|----------|----------|----------|
| 5.32E+00 | 2.02E-01 | 5.75E-01 | 2.20E-01 | 0.577085 |
| 5.34E+00 | 2.01E-01 | 5.75E-01 | 2.21E-01 | 0.577143 |
| 5.36E+00 | 1.99E-01 | 5.75E-01 | 2.22E-01 | 0.577194 |
| 5.38E+00 | 1.98E-01 | 5.75E-01 | 2.23E-01 | 0.577238 |
| 5.40E+00 | 1.97E-01 | 5.75E-01 | 2.25E-01 | 0.577274 |
| 5.42E+00 | 1.96E-01 | 5.75E-01 | 2.26E-01 | 0.577304 |
| 5.44E+00 | 1.95E-01 | 5.75E-01 | 2.27E-01 | 0.577326 |
| 5.46E+00 | 1.93E-01 | 5.75E-01 | 2.28E-01 | 0.577341 |
| 5.48E+00 | 1.92E-01 | 5.75E-01 | 2.29E-01 | 0.577349 |
| 5.50E+00 | 1.91E-01 | 5.75E-01 | 2.30E-01 | 0.57735 |
| 5.52E+00 | 1.90E-01 | 5.75E-01 | 2.32E-01 | 0.577344 |
| 5.54E+00 | 1.89E-01 | 5.75E-01 | 2.33E-01 | 0.577331 |
| 5.56E+00 | 1.88E-01 | 5.75E-01 | 2.34E-01 | 0.577312 |
| 5.58E+00 | 1.87E-01 | 5.75E-01 | 2.35E-01 | 0.577286 |
| 5.60E+00 | 1.85E-01 | 5.75E-01 | 2.36E-01 | 0.577253 |
| 5.62E+00 | 1.84E-01 | 5.75E-01 | 2.37E-01 | 0.577213 |
| 5.64E+00 | 1.83E-01 | 5.75E-01 | 2.38E-01 | 0.577167 |
| 5.66E+00 | 1.82E-01 | 5.75E-01 | 2.40E-01 | 0.577114 |
| 5.68E+00 | 1.81E-01 | 5.75E-01 | 2.41E-01 | 0.577055 |
| 5.70E+00 | 1.80E-01 | 5.74E-01 | 2.42E-01 | 0.576989 |
| 5.72E+00 | 1.79E-01 | 5.74E-01 | 2.43E-01 | 0.576918 |
| 5.74E+00 | 1.78E-01 | 5.74E-01 | 2.44E-01 | 0.576839 |
| 5.76E+00 | 1.77E-01 | 5.74E-01 | 2.45E-01 | 0.576755 |
| 5.78E+00 | 1.76E-01 | 5.74E-01 | 2.46E-01 | 0.576664 |
| 5.80E+00 | 1.75E-01 | 5.74E-01 | 2.48E-01 | 0.576567 |
| 5.82E+00 | 1.74E-01 | 5.74E-01 | 2.49E-01 | 0.576464 |
| 5.84E+00 | 1.73E-01 | 5.74E-01 | 2.50E-01 | 0.576355 |
| 5.86E+00 | 1.71E-01 | 5.74E-01 | 2.51E-01 | 0.57624 |
| 5.88E+00 | 1.70E-01 | 5.74E-01 | 2.52E-01 | 0.576118 |
| 5.90E+00 | 1.69E-01 | 5.73E-01 | 2.53E-01 | 0.575991 |
| 5.92E+00 | 1.68E-01 | 5.73E-01 | 2.54E-01 | 0.575859 |
| 5.94E+00 | 1.67E-01 | 5.73E-01 | 2.56E-01 | 0.57572 |
| 5.96E+00 | 1.66E-01 | 5.73E-01 | 2.57E-01 | 0.575575 |
| 5.98E+00 | 1.65E-01 | 5.73E-01 | 2.58E-01 | 0.575425 |
| 6.00E+00 | 1.64E-01 | 5.73E-01 | 2.59E-01 | 0.575269 |
| 6.02E+00 | 1.63E-01 | 5.72E-01 | 2.60E-01 | 0.575108 |
| 6.04E+00 | 1.62E-01 | 5.72E-01 | 2.61E-01 | 0.57494 |
| 6.06E+00 | 1.61E-01 | 5.72E-01 | 2.63E-01 | 0.574768 |
| 6.08E+00 | 1.60E-01 | 5.72E-01 | 2.64E-01 | 0.57459 |
| 6.10E+00 | 1.60E-01 | 5.72E-01 | 2.65E-01 | 0.574406 |
| 6.12E+00 | 1.59E-01 | 5.72E-01 | 2.66E-01 | 0.574217 |
| 6.14E+00 | 1.58E-01 | 5.71E-01 | 2.67E-01 | 0.574023 |
| 6.16E+00 | 1.57E-01 | 5.71E-01 | 2.68E-01 | 0.573823 |
| 6.18E+00 | 1.56E-01 | 5.71E-01 | 2.69E-01 | 0.573618 |
| 6.20E+00 | 1.55E-01 | 5.71E-01 | 2.71E-01 | 0.573408 |
| 6.22E+00 | 1.54E-01 | 5.71E-01 | 2.72E-01 | 0.573192 |
| 6.24E+00 | 1.53E-01 | 5.70E-01 | 2.73E-01 | 0.572972 |
| 6.26E+00 | 1.52E-01 | 5.70E-01 | 2.74E-01 | 0.572746 |
| 6.28E+00 | 1.51E-01 | 5.70E-01 | 2.75E-01 | 0.572516 |
| 6.30E+00 | 1.50E-01 | 5.70E-01 | 2.76E-01 | 0.57228 |
| 6.32E+00 | 1.49E-01 | 5.69E-01 | 2.77E-01 | 0.572039 |
| 6.34E+00 | 1.48E-01 | 5.69E-01 | 2.78E-01 | 0.571794 |
| 6.36E+00 | 1.48E-01 | 5.69E-01 | 2.80E-01 | 0.571543 |
| 6.38E+00 | 1.47E-01 | 5.69E-01 | 2.81E-01 | 0.571288 |
| 6.40E+00 | 1.46E-01 | 5.68E-01 | 2.82E-01 | 0.571028 |
| 6.42E+00 | 1.45E-01 | 5.68E-01 | 2.83E-01 | 0.570763 |

| | | | | |
|----------|----------|----------|----------|----------|
| 6.44E+00 | 1.44E-01 | 5.68E-01 | 2.84E-01 | 0.570494 |
| 6.46E+00 | 1.43E-01 | 5.68E-01 | 2.85E-01 | 0.57022 |
| 6.48E+00 | 1.42E-01 | 5.67E-01 | 2.86E-01 | 0.569941 |
| 6.50E+00 | 1.41E-01 | 5.67E-01 | 2.88E-01 | 0.569658 |
| 6.52E+00 | 1.41E-01 | 5.67E-01 | 2.89E-01 | 0.56937 |
| 6.54E+00 | 1.40E-01 | 5.66E-01 | 2.90E-01 | 0.569077 |
| 6.56E+00 | 1.39E-01 | 5.66E-01 | 2.91E-01 | 0.56878 |
| 6.58E+00 | 1.38E-01 | 5.66E-01 | 2.92E-01 | 0.568479 |
| 6.60E+00 | 1.37E-01 | 5.65E-01 | 2.93E-01 | 0.568173 |
| 6.62E+00 | 1.36E-01 | 5.65E-01 | 2.94E-01 | 0.567863 |
| 6.64E+00 | 1.36E-01 | 5.65E-01 | 2.95E-01 | 0.567549 |
| 6.66E+00 | 1.35E-01 | 5.65E-01 | 2.97E-01 | 0.56723 |
| 6.68E+00 | 1.34E-01 | 5.64E-01 | 2.98E-01 | 0.566907 |
| 6.70E+00 | 1.33E-01 | 5.64E-01 | 2.99E-01 | 0.56658 |
| 6.72E+00 | 1.32E-01 | 5.64E-01 | 3.00E-01 | 0.566249 |
| 6.74E+00 | 1.32E-01 | 5.63E-01 | 3.01E-01 | 0.565913 |
| 6.76E+00 | 1.31E-01 | 5.63E-01 | 3.02E-01 | 0.565574 |
| 6.78E+00 | 1.30E-01 | 5.63E-01 | 3.03E-01 | 0.56523 |
| 6.80E+00 | 1.29E-01 | 5.62E-01 | 3.05E-01 | 0.564882 |
| 6.82E+00 | 1.28E-01 | 5.62E-01 | 3.06E-01 | 0.564531 |
| 6.84E+00 | 1.28E-01 | 5.61E-01 | 3.07E-01 | 0.564175 |
| 6.86E+00 | 1.27E-01 | 5.61E-01 | 3.08E-01 | 0.563816 |
| 6.88E+00 | 1.26E-01 | 5.61E-01 | 3.09E-01 | 0.563453 |
| 6.90E+00 | 1.25E-01 | 5.60E-01 | 3.10E-01 | 0.563085 |
| 6.92E+00 | 1.25E-01 | 5.60E-01 | 3.11E-01 | 0.562714 |
| 6.94E+00 | 1.24E-01 | 5.60E-01 | 3.12E-01 | 0.56234 |
| 6.96E+00 | 1.23E-01 | 5.59E-01 | 3.13E-01 | 0.561961 |
| 6.98E+00 | 1.22E-01 | 5.59E-01 | 3.15E-01 | 0.561579 |
| 7.00E+00 | 1.22E-01 | 5.58E-01 | 3.16E-01 | 0.561193 |
| 7.02E+00 | 1.21E-01 | 5.58E-01 | 3.17E-01 | 0.560804 |
| 7.04E+00 | 1.20E-01 | 5.58E-01 | 3.18E-01 | 0.560411 |
| 7.06E+00 | 1.20E-01 | 5.57E-01 | 3.19E-01 | 0.560014 |
| 7.08E+00 | 1.19E-01 | 5.57E-01 | 3.20E-01 | 0.559614 |
| 7.10E+00 | 1.18E-01 | 5.56E-01 | 3.21E-01 | 0.55921 |
| 7.12E+00 | 1.17E-01 | 5.56E-01 | 3.22E-01 | 0.558803 |
| 7.14E+00 | 1.17E-01 | 5.56E-01 | 3.24E-01 | 0.558393 |
| 7.16E+00 | 1.16E-01 | 5.55E-01 | 3.25E-01 | 0.557979 |
| 7.18E+00 | 1.15E-01 | 5.55E-01 | 3.26E-01 | 0.557561 |
| 7.20E+00 | 1.15E-01 | 5.54E-01 | 3.27E-01 | 0.557141 |
| 7.22E+00 | 1.14E-01 | 5.54E-01 | 3.28E-01 | 0.556717 |
| 7.24E+00 | 1.13E-01 | 5.54E-01 | 3.29E-01 | 0.556289 |
| 7.26E+00 | 1.13E-01 | 5.53E-01 | 3.30E-01 | 0.555859 |
| 7.28E+00 | 1.12E-01 | 5.53E-01 | 3.31E-01 | 0.555425 |
| 7.30E+00 | 1.11E-01 | 5.52E-01 | 3.32E-01 | 0.554988 |
| 7.32E+00 | 1.11E-01 | 5.52E-01 | 3.33E-01 | 0.554548 |
| 7.34E+00 | 1.10E-01 | 5.51E-01 | 3.35E-01 | 0.554105 |
| 7.36E+00 | 1.09E-01 | 5.51E-01 | 3.36E-01 | 0.553659 |
| 7.38E+00 | 1.09E-01 | 5.50E-01 | 3.37E-01 | 0.55321 |
| 7.40E+00 | 1.08E-01 | 5.50E-01 | 3.38E-01 | 0.552757 |
| 7.42E+00 | 1.07E-01 | 5.50E-01 | 3.39E-01 | 0.552302 |
| 7.44E+00 | 1.07E-01 | 5.49E-01 | 3.40E-01 | 0.551844 |
| 7.46E+00 | 1.06E-01 | 5.49E-01 | 3.41E-01 | 0.551382 |
| 7.48E+00 | 1.05E-01 | 5.48E-01 | 3.42E-01 | 0.550918 |
| 7.50E+00 | 1.05E-01 | 5.48E-01 | 3.43E-01 | 0.550451 |
| 7.52E+00 | 1.04E-01 | 5.47E-01 | 3.44E-01 | 0.549981 |
| 7.54E+00 | 1.03E-01 | 5.47E-01 | 3.46E-01 | 0.549508 |

| | | | | |
|----------|----------|----------|----------|----------|
| 7.56E+00 | 1.03E-01 | 5.46E-01 | 3.47E-01 | 0.549033 |
| 7.58E+00 | 1.02E-01 | 5.46E-01 | 3.48E-01 | 0.548554 |
| 7.60E+00 | 1.02E-01 | 5.45E-01 | 3.49E-01 | 0.548073 |
| 7.62E+00 | 1.01E-01 | 5.45E-01 | 3.50E-01 | 0.54759 |
| 7.64E+00 | 1.00E-01 | 5.44E-01 | 3.51E-01 | 0.547103 |
| 7.66E+00 | 9.98E-02 | 5.44E-01 | 3.52E-01 | 0.546614 |
| 7.68E+00 | 9.92E-02 | 5.43E-01 | 3.53E-01 | 0.546122 |
| 7.70E+00 | 9.86E-02 | 5.43E-01 | 3.54E-01 | 0.545628 |
| 7.72E+00 | 9.80E-02 | 5.42E-01 | 3.55E-01 | 0.545131 |
| 7.74E+00 | 9.74E-02 | 5.42E-01 | 3.56E-01 | 0.544631 |
| 7.76E+00 | 9.68E-02 | 5.41E-01 | 3.58E-01 | 0.544129 |
| 7.78E+00 | 9.62E-02 | 5.41E-01 | 3.59E-01 | 0.543625 |
| 7.80E+00 | 9.57E-02 | 5.40E-01 | 3.60E-01 | 0.543118 |
| 7.82E+00 | 9.51E-02 | 5.40E-01 | 3.61E-01 | 0.542608 |
| 7.84E+00 | 9.45E-02 | 5.39E-01 | 3.62E-01 | 0.542096 |
| 7.86E+00 | 9.39E-02 | 5.39E-01 | 3.63E-01 | 0.541582 |
| 7.88E+00 | 9.34E-02 | 5.38E-01 | 3.64E-01 | 0.541065 |
| 7.90E+00 | 9.28E-02 | 5.38E-01 | 3.65E-01 | 0.540546 |
| 7.92E+00 | 9.23E-02 | 5.37E-01 | 3.66E-01 | 0.540025 |
| 7.94E+00 | 9.17E-02 | 5.37E-01 | 3.67E-01 | 0.539501 |
| 7.96E+00 | 9.12E-02 | 5.36E-01 | 3.68E-01 | 0.538975 |
| 7.98E+00 | 9.06E-02 | 5.36E-01 | 3.69E-01 | 0.538447 |
| 8.00E+00 | 9.01E-02 | 5.35E-01 | 3.70E-01 | 0.537917 |
| 8.02E+00 | 8.95E-02 | 5.35E-01 | 3.71E-01 | 0.537384 |
| 8.04E+00 | 8.90E-02 | 5.34E-01 | 3.73E-01 | 0.536849 |
| 8.06E+00 | 8.85E-02 | 5.34E-01 | 3.74E-01 | 0.536312 |
| 8.08E+00 | 8.79E-02 | 5.33E-01 | 3.75E-01 | 0.535773 |
| 8.10E+00 | 8.74E-02 | 5.32E-01 | 3.76E-01 | 0.535232 |
| 8.12E+00 | 8.69E-02 | 5.32E-01 | 3.77E-01 | 0.534689 |
| 8.14E+00 | 8.63E-02 | 5.31E-01 | 3.78E-01 | 0.534143 |
| 8.16E+00 | 8.58E-02 | 5.31E-01 | 3.79E-01 | 0.533596 |
| 8.18E+00 | 8.53E-02 | 5.30E-01 | 3.80E-01 | 0.533046 |
| 8.20E+00 | 8.48E-02 | 5.30E-01 | 3.81E-01 | 0.532495 |
| 8.22E+00 | 8.43E-02 | 5.29E-01 | 3.82E-01 | 0.531942 |
| 8.24E+00 | 8.38E-02 | 5.29E-01 | 3.83E-01 | 0.531386 |
| 8.26E+00 | 8.33E-02 | 5.28E-01 | 3.84E-01 | 0.530829 |
| 8.28E+00 | 8.28E-02 | 5.27E-01 | 3.85E-01 | 0.53027 |
| 8.30E+00 | 8.23E-02 | 5.27E-01 | 3.86E-01 | 0.529709 |
| 8.32E+00 | 8.18E-02 | 5.26E-01 | 3.87E-01 | 0.529146 |
| 8.34E+00 | 8.13E-02 | 5.26E-01 | 3.88E-01 | 0.528581 |
| 8.36E+00 | 8.08E-02 | 5.25E-01 | 3.89E-01 | 0.528015 |
| 8.38E+00 | 8.03E-02 | 5.25E-01 | 3.91E-01 | 0.527446 |
| 8.40E+00 | 7.99E-02 | 5.24E-01 | 3.92E-01 | 0.526876 |
| 8.42E+00 | 7.94E-02 | 5.24E-01 | 3.93E-01 | 0.526305 |
| 8.44E+00 | 7.89E-02 | 5.23E-01 | 3.94E-01 | 0.525731 |
| 8.46E+00 | 7.84E-02 | 5.22E-01 | 3.95E-01 | 0.525156 |
| 8.48E+00 | 7.80E-02 | 5.22E-01 | 3.96E-01 | 0.524579 |
| 8.50E+00 | 7.75E-02 | 5.21E-01 | 3.97E-01 | 0.524 |
| 8.52E+00 | 7.70E-02 | 5.21E-01 | 3.98E-01 | 0.52342 |
| 8.54E+00 | 7.66E-02 | 5.20E-01 | 3.99E-01 | 0.522838 |
| 8.56E+00 | 7.61E-02 | 5.19E-01 | 4.00E-01 | 0.522254 |
| 8.58E+00 | 7.56E-02 | 5.19E-01 | 4.01E-01 | 0.521669 |
| 8.60E+00 | 7.52E-02 | 5.18E-01 | 4.02E-01 | 0.521082 |
| 8.62E+00 | 7.47E-02 | 5.18E-01 | 4.03E-01 | 0.520494 |
| 8.64E+00 | 7.43E-02 | 5.17E-01 | 4.04E-01 | 0.519904 |
| 8.66E+00 | 7.38E-02 | 5.17E-01 | 4.05E-01 | 0.519313 |

| | | | | |
|----------|----------|----------|----------|----------|
| 8.68E+00 | 7.34E-02 | 5.16E-01 | 4.06E-01 | 0.51872 |
| 8.70E+00 | 7.30E-02 | 5.15E-01 | 4.07E-01 | 0.518126 |
| 8.72E+00 | 7.25E-02 | 5.15E-01 | 4.08E-01 | 0.51753 |
| 8.74E+00 | 7.21E-02 | 5.14E-01 | 4.09E-01 | 0.516933 |
| 8.76E+00 | 7.17E-02 | 5.14E-01 | 4.10E-01 | 0.516334 |
| 8.78E+00 | 7.12E-02 | 5.13E-01 | 4.11E-01 | 0.515734 |
| 8.80E+00 | 7.08E-02 | 5.12E-01 | 4.12E-01 | 0.515132 |
| 8.82E+00 | 7.04E-02 | 5.12E-01 | 4.13E-01 | 0.51453 |
| 8.84E+00 | 6.99E-02 | 5.11E-01 | 4.14E-01 | 0.513926 |
| 8.86E+00 | 6.95E-02 | 5.11E-01 | 4.15E-01 | 0.51332 |
| 8.88E+00 | 6.91E-02 | 5.10E-01 | 4.16E-01 | 0.512713 |
| 8.90E+00 | 6.87E-02 | 5.09E-01 | 4.17E-01 | 0.512105 |
| 8.92E+00 | 6.83E-02 | 5.09E-01 | 4.18E-01 | 0.511496 |
| 8.94E+00 | 6.79E-02 | 5.08E-01 | 4.19E-01 | 0.510885 |
| 8.96E+00 | 6.75E-02 | 5.07E-01 | 4.20E-01 | 0.510274 |
| 8.98E+00 | 6.71E-02 | 5.07E-01 | 4.21E-01 | 0.50966 |
| 9.00E+00 | 6.67E-02 | 5.06E-01 | 4.22E-01 | 0.509046 |
| 9.02E+00 | 6.63E-02 | 5.06E-01 | 4.24E-01 | 0.508431 |
| 9.04E+00 | 6.59E-02 | 5.05E-01 | 4.25E-01 | 0.507814 |
| 9.06E+00 | 6.55E-02 | 5.04E-01 | 4.26E-01 | 0.507196 |
| 9.08E+00 | 6.51E-02 | 5.04E-01 | 4.27E-01 | 0.506577 |
| 9.10E+00 | 6.47E-02 | 5.03E-01 | 4.28E-01 | 0.505957 |
| 9.12E+00 | 6.43E-02 | 5.03E-01 | 4.29E-01 | 0.505336 |
| 9.14E+00 | 6.39E-02 | 5.02E-01 | 4.30E-01 | 0.504714 |
| 9.16E+00 | 6.35E-02 | 5.01E-01 | 4.31E-01 | 0.504091 |
| 9.18E+00 | 6.31E-02 | 5.01E-01 | 4.32E-01 | 0.503466 |
| 9.20E+00 | 6.28E-02 | 5.00E-01 | 4.33E-01 | 0.502841 |
| 9.22E+00 | 6.24E-02 | 4.99E-01 | 4.34E-01 | 0.502214 |
| 9.24E+00 | 6.20E-02 | 4.99E-01 | 4.35E-01 | 0.501587 |
| 9.26E+00 | 6.16E-02 | 4.98E-01 | 4.36E-01 | 0.500959 |
| 9.28E+00 | 6.13E-02 | 4.98E-01 | 4.37E-01 | 0.500329 |
| 9.30E+00 | 6.09E-02 | 4.97E-01 | 4.38E-01 | 0.499699 |
| 9.32E+00 | 6.05E-02 | 4.96E-01 | 4.39E-01 | 0.499067 |
| 9.34E+00 | 6.02E-02 | 4.96E-01 | 4.40E-01 | 0.498435 |
| 9.36E+00 | 5.98E-02 | 4.95E-01 | 4.41E-01 | 0.497802 |
| 9.38E+00 | 5.95E-02 | 4.94E-01 | 4.41E-01 | 0.497168 |
| 9.40E+00 | 5.91E-02 | 4.94E-01 | 4.42E-01 | 0.496533 |
| 9.42E+00 | 5.87E-02 | 4.93E-01 | 4.43E-01 | 0.495897 |
| 9.44E+00 | 5.84E-02 | 4.92E-01 | 4.44E-01 | 0.49526 |
| 9.46E+00 | 5.80E-02 | 4.92E-01 | 4.45E-01 | 0.494623 |
| 9.48E+00 | 5.77E-02 | 4.91E-01 | 4.46E-01 | 0.493984 |
| 9.50E+00 | 5.73E-02 | 4.91E-01 | 4.47E-01 | 0.493345 |
| 9.52E+00 | 5.70E-02 | 4.90E-01 | 4.48E-01 | 0.492705 |
| 9.54E+00 | 5.67E-02 | 4.89E-01 | 4.49E-01 | 0.492064 |
| 9.56E+00 | 5.63E-02 | 4.89E-01 | 4.50E-01 | 0.491423 |
| 9.58E+00 | 5.60E-02 | 4.88E-01 | 4.51E-01 | 0.49078 |
| 9.60E+00 | 5.56E-02 | 4.87E-01 | 4.52E-01 | 0.490137 |
| 9.62E+00 | 5.53E-02 | 4.87E-01 | 4.53E-01 | 0.489493 |
| 9.64E+00 | 5.50E-02 | 4.86E-01 | 4.54E-01 | 0.488849 |
| 9.66E+00 | 5.47E-02 | 4.85E-01 | 4.55E-01 | 0.488204 |
| 9.68E+00 | 5.43E-02 | 4.85E-01 | 4.56E-01 | 0.487558 |
| 9.70E+00 | 5.40E-02 | 4.84E-01 | 4.57E-01 | 0.486911 |
| 9.72E+00 | 5.37E-02 | 4.84E-01 | 4.58E-01 | 0.486264 |
| 9.74E+00 | 5.34E-02 | 4.83E-01 | 4.59E-01 | 0.485616 |
| 9.76E+00 | 5.30E-02 | 4.82E-01 | 4.60E-01 | 0.484967 |
| 9.78E+00 | 5.27E-02 | 4.82E-01 | 4.61E-01 | 0.484318 |

| | | | | |
|----------|----------|----------|----------|----------|
| 9.80E+00 | 5.24E-02 | 4.81E-01 | 4.62E-01 | 0.483668 |
| 9.82E+00 | 5.21E-02 | 4.80E-01 | 4.63E-01 | 0.483018 |
| 9.84E+00 | 5.18E-02 | 4.80E-01 | 4.64E-01 | 0.482367 |
| 9.86E+00 | 5.15E-02 | 4.79E-01 | 4.65E-01 | 0.481715 |
| 9.88E+00 | 5.12E-02 | 4.78E-01 | 4.66E-01 | 0.481063 |
| 9.90E+00 | 5.08E-02 | 4.78E-01 | 4.67E-01 | 0.48041 |
| 9.92E+00 | 5.05E-02 | 4.77E-01 | 4.68E-01 | 0.479757 |
| 9.94E+00 | 5.02E-02 | 4.76E-01 | 4.69E-01 | 0.479103 |
| 9.96E+00 | 4.99E-02 | 4.76E-01 | 4.70E-01 | 0.478449 |
| 9.98E+00 | 4.96E-02 | 4.75E-01 | 4.71E-01 | 0.477794 |
| 1.00E+01 | 4.93E-02 | 4.74E-01 | 4.72E-01 | 0.477139 |
| 1.00E+01 | 4.90E-02 | 4.74E-01 | 4.72E-01 | 0.476483 |
| 1.00E+01 | 4.87E-02 | 4.73E-01 | 4.73E-01 | 0.475827 |
| 1.01E+01 | 4.85E-02 | 4.72E-01 | 4.74E-01 | 0.47517 |
| 1.01E+01 | 4.82E-02 | 4.72E-01 | 4.75E-01 | 0.474513 |
| 1.01E+01 | 4.79E-02 | 4.71E-01 | 4.76E-01 | 0.473855 |
| 1.01E+01 | 4.76E-02 | 4.70E-01 | 4.77E-01 | 0.473197 |
| 1.01E+01 | 4.73E-02 | 4.70E-01 | 4.78E-01 | 0.472539 |
| 1.02E+01 | 4.70E-02 | 4.69E-01 | 4.79E-01 | 0.47188 |
| 1.02E+01 | 4.67E-02 | 4.68E-01 | 4.80E-01 | 0.47122 |
| 1.02E+01 | 4.65E-02 | 4.68E-01 | 4.81E-01 | 0.470561 |
| 1.02E+01 | 4.62E-02 | 4.67E-01 | 4.82E-01 | 0.469901 |
| 1.02E+01 | 4.59E-02 | 4.67E-01 | 4.83E-01 | 0.469241 |
| 1.03E+01 | 4.56E-02 | 4.66E-01 | 4.84E-01 | 0.46858 |
| 1.03E+01 | 4.54E-02 | 4.65E-01 | 4.85E-01 | 0.467919 |
| 1.03E+01 | 4.51E-02 | 4.65E-01 | 4.86E-01 | 0.467258 |
| 1.03E+01 | 4.48E-02 | 4.64E-01 | 4.87E-01 | 0.466596 |
| 1.03E+01 | 4.45E-02 | 4.63E-01 | 4.87E-01 | 0.465934 |
| 1.04E+01 | 4.43E-02 | 4.63E-01 | 4.88E-01 | 0.465272 |
| 1.04E+01 | 4.40E-02 | 4.62E-01 | 4.89E-01 | 0.464609 |
| 1.04E+01 | 4.37E-02 | 4.61E-01 | 4.90E-01 | 0.463946 |
| 1.04E+01 | 4.35E-02 | 4.61E-01 | 4.91E-01 | 0.463283 |
| 1.04E+01 | 4.32E-02 | 4.60E-01 | 4.92E-01 | 0.46262 |
| 1.05E+01 | 4.30E-02 | 4.59E-01 | 4.93E-01 | 0.461956 |
| 1.05E+01 | 4.27E-02 | 4.59E-01 | 4.94E-01 | 0.461292 |
| 1.05E+01 | 4.24E-02 | 4.58E-01 | 4.95E-01 | 0.460628 |
| 1.05E+01 | 4.22E-02 | 4.57E-01 | 4.96E-01 | 0.459964 |
| 1.05E+01 | 4.19E-02 | 4.57E-01 | 4.97E-01 | 0.4593 |
| 1.06E+01 | 4.17E-02 | 4.56E-01 | 4.98E-01 | 0.458635 |
| 1.06E+01 | 4.14E-02 | 4.55E-01 | 4.98E-01 | 0.45797 |
| 1.06E+01 | 4.12E-02 | 4.55E-01 | 4.99E-01 | 0.457305 |
| 1.06E+01 | 4.09E-02 | 4.54E-01 | 5.00E-01 | 0.45664 |
| 1.06E+01 | 4.07E-02 | 4.53E-01 | 5.01E-01 | 0.455975 |
| 1.07E+01 | 4.05E-02 | 4.53E-01 | 5.02E-01 | 0.455309 |
| 1.07E+01 | 4.02E-02 | 4.52E-01 | 5.03E-01 | 0.454644 |
| 1.07E+01 | 4.00E-02 | 4.51E-01 | 5.04E-01 | 0.453978 |
| 1.07E+01 | 3.97E-02 | 4.51E-01 | 5.05E-01 | 0.453312 |
| 1.07E+01 | 3.95E-02 | 4.50E-01 | 5.06E-01 | 0.452646 |
| 1.08E+01 | 3.93E-02 | 4.49E-01 | 5.07E-01 | 0.45198 |
| 1.08E+01 | 3.90E-02 | 4.49E-01 | 5.07E-01 | 0.451314 |
| 1.08E+01 | 3.88E-02 | 4.48E-01 | 5.08E-01 | 0.450647 |
| 1.08E+01 | 3.86E-02 | 4.47E-01 | 5.09E-01 | 0.449981 |
| 1.08E+01 | 3.83E-02 | 4.47E-01 | 5.10E-01 | 0.449315 |
| 1.09E+01 | 3.81E-02 | 4.46E-01 | 5.11E-01 | 0.448648 |
| 1.09E+01 | 3.79E-02 | 4.45E-01 | 5.12E-01 | 0.447982 |
| 1.09E+01 | 3.76E-02 | 4.45E-01 | 5.13E-01 | 0.447315 |

| | | | | |
|----------|----------|----------|----------|----------|
| 1.09E+01 | 3.74E-02 | 4.44E-01 | 5.14E-01 | 0.446648 |
| 1.09E+01 | 3.72E-02 | 4.43E-01 | 5.15E-01 | 0.445982 |
| 1.10E+01 | 3.70E-02 | 4.43E-01 | 5.16E-01 | 0.445315 |
| 1.10E+01 | 3.67E-02 | 4.42E-01 | 5.16E-01 | 0.444649 |
| 1.10E+01 | 3.65E-02 | 4.41E-01 | 5.17E-01 | 0.443982 |
| 1.10E+01 | 3.63E-02 | 4.41E-01 | 5.18E-01 | 0.443315 |
| 1.10E+01 | 3.61E-02 | 4.40E-01 | 5.19E-01 | 0.442649 |
| 1.11E+01 | 3.59E-02 | 4.39E-01 | 5.20E-01 | 0.441982 |
| 1.11E+01 | 3.56E-02 | 4.39E-01 | 5.21E-01 | 0.441315 |
| 1.11E+01 | 3.54E-02 | 4.38E-01 | 5.22E-01 | 0.440649 |
| 1.11E+01 | 3.52E-02 | 4.37E-01 | 5.23E-01 | 0.439982 |
| 1.11E+01 | 3.50E-02 | 4.37E-01 | 5.23E-01 | 0.439316 |
| 1.12E+01 | 3.48E-02 | 4.36E-01 | 5.24E-01 | 0.438649 |
| 1.12E+01 | 3.46E-02 | 4.35E-01 | 5.25E-01 | 0.437983 |
| 1.12E+01 | 3.44E-02 | 4.35E-01 | 5.26E-01 | 0.437317 |
| 1.12E+01 | 3.42E-02 | 4.34E-01 | 5.27E-01 | 0.436651 |
| 1.12E+01 | 3.40E-02 | 4.33E-01 | 5.28E-01 | 0.435985 |
| 1.13E+01 | 3.38E-02 | 4.33E-01 | 5.29E-01 | 0.435319 |
| 1.13E+01 | 3.36E-02 | 4.32E-01 | 5.29E-01 | 0.434653 |
| 1.13E+01 | 3.34E-02 | 4.31E-01 | 5.30E-01 | 0.433987 |
| 1.13E+01 | 3.32E-02 | 4.31E-01 | 5.31E-01 | 0.433321 |
| 1.13E+01 | 3.30E-02 | 4.30E-01 | 5.32E-01 | 0.432656 |
| 1.14E+01 | 3.28E-02 | 4.29E-01 | 5.33E-01 | 0.43199 |
| 1.14E+01 | 3.26E-02 | 4.29E-01 | 5.34E-01 | 0.431325 |
| 1.14E+01 | 3.24E-02 | 4.28E-01 | 5.35E-01 | 0.43066 |
| 1.14E+01 | 3.22E-02 | 4.27E-01 | 5.35E-01 | 0.429995 |
| 1.14E+01 | 3.20E-02 | 4.27E-01 | 5.36E-01 | 0.42933 |
| 1.15E+01 | 3.18E-02 | 4.26E-01 | 5.37E-01 | 0.428665 |
| 1.15E+01 | 3.16E-02 | 4.25E-01 | 5.38E-01 | 0.428001 |
| 1.15E+01 | 3.14E-02 | 4.25E-01 | 5.39E-01 | 0.427337 |
| 1.15E+01 | 3.12E-02 | 4.24E-01 | 5.40E-01 | 0.426673 |
| 1.15E+01 | 3.10E-02 | 4.23E-01 | 5.41E-01 | 0.426009 |
| 1.16E+01 | 3.09E-02 | 4.23E-01 | 5.41E-01 | 0.425345 |
| 1.16E+01 | 3.07E-02 | 4.22E-01 | 5.42E-01 | 0.424681 |
| 1.16E+01 | 3.05E-02 | 4.21E-01 | 5.43E-01 | 0.424018 |
| 1.16E+01 | 3.03E-02 | 4.21E-01 | 5.44E-01 | 0.423355 |
| 1.16E+01 | 3.01E-02 | 4.20E-01 | 5.45E-01 | 0.422692 |
| 1.17E+01 | 2.99E-02 | 4.19E-01 | 5.46E-01 | 0.42203 |
| 1.17E+01 | 2.98E-02 | 4.19E-01 | 5.46E-01 | 0.421367 |
| 1.17E+01 | 2.96E-02 | 4.18E-01 | 5.47E-01 | 0.420705 |
| 1.17E+01 | 2.94E-02 | 4.17E-01 | 5.48E-01 | 0.420043 |
| 1.17E+01 | 2.92E-02 | 4.17E-01 | 5.49E-01 | 0.419381 |
| 1.18E+01 | 2.91E-02 | 4.16E-01 | 5.50E-01 | 0.41872 |
| 1.18E+01 | 2.89E-02 | 4.15E-01 | 5.51E-01 | 0.418059 |
| 1.18E+01 | 2.87E-02 | 4.15E-01 | 5.51E-01 | 0.417398 |
| 1.18E+01 | 2.85E-02 | 4.14E-01 | 5.52E-01 | 0.416738 |
| 1.18E+01 | 2.84E-02 | 4.13E-01 | 5.53E-01 | 0.416077 |
| 1.19E+01 | 2.82E-02 | 4.13E-01 | 5.54E-01 | 0.415417 |
| 1.19E+01 | 2.80E-02 | 4.12E-01 | 5.55E-01 | 0.414758 |
| 1.19E+01 | 2.79E-02 | 4.12E-01 | 5.56E-01 | 0.414098 |
| 1.19E+01 | 2.77E-02 | 4.11E-01 | 5.56E-01 | 0.413439 |
| 1.19E+01 | 2.75E-02 | 4.10E-01 | 5.57E-01 | 0.41278 |
| 1.20E+01 | 2.74E-02 | 4.10E-01 | 5.58E-01 | 0.412122 |
| 1.20E+01 | 2.72E-02 | 4.09E-01 | 5.59E-01 | 0.411464 |
| 1.20E+01 | 2.70E-02 | 4.08E-01 | 5.60E-01 | 0.410806 |
| 1.20E+01 | 2.69E-02 | 4.08E-01 | 5.61E-01 | 0.410148 |

| | | | | |
|----------|----------|----------|----------|----------|
| 1.20E+01 | 2.67E-02 | 4.07E-01 | 5.61E-01 | 0.409491 |
| 1.21E+01 | 2.65E-02 | 4.06E-01 | 5.62E-01 | 0.408834 |
| 1.21E+01 | 2.64E-02 | 4.06E-01 | 5.63E-01 | 0.408178 |
| 1.21E+01 | 2.62E-02 | 4.05E-01 | 5.64E-01 | 0.407522 |
| 1.21E+01 | 2.61E-02 | 4.04E-01 | 5.65E-01 | 0.406866 |
| 1.21E+01 | 2.59E-02 | 4.04E-01 | 5.65E-01 | 0.40621 |
| 1.22E+01 | 2.58E-02 | 4.03E-01 | 5.66E-01 | 0.405555 |
| 1.22E+01 | 2.56E-02 | 4.02E-01 | 5.67E-01 | 0.404901 |
| 1.22E+01 | 2.55E-02 | 4.02E-01 | 5.68E-01 | 0.404246 |
| 1.22E+01 | 2.53E-02 | 4.01E-01 | 5.69E-01 | 0.403593 |
| 1.22E+01 | 2.51E-02 | 4.00E-01 | 5.69E-01 | 0.402939 |
| 1.23E+01 | 2.50E-02 | 4.00E-01 | 5.70E-01 | 0.402286 |
| 1.23E+01 | 2.48E-02 | 3.99E-01 | 5.71E-01 | 0.401633 |
| 1.23E+01 | 2.47E-02 | 3.98E-01 | 5.72E-01 | 0.400981 |
| 1.23E+01 | 2.45E-02 | 3.98E-01 | 5.73E-01 | 0.400329 |
| 1.23E+01 | 2.44E-02 | 3.97E-01 | 5.73E-01 | 0.399677 |
| 1.24E+01 | 2.43E-02 | 3.97E-01 | 5.74E-01 | 0.399026 |
| 1.24E+01 | 2.41E-02 | 3.96E-01 | 5.75E-01 | 0.398376 |
| 1.24E+01 | 2.40E-02 | 3.95E-01 | 5.76E-01 | 0.397725 |
| 1.24E+01 | 2.38E-02 | 3.95E-01 | 5.77E-01 | 0.397076 |
| 1.24E+01 | 2.37E-02 | 3.94E-01 | 5.77E-01 | 0.396426 |
| 1.25E+01 | 2.35E-02 | 3.93E-01 | 5.78E-01 | 0.395777 |
| 1.25E+01 | 2.34E-02 | 3.93E-01 | 5.79E-01 | 0.395129 |
| 1.25E+01 | 2.33E-02 | 3.92E-01 | 5.80E-01 | 0.394481 |
| 1.25E+01 | 2.31E-02 | 3.91E-01 | 5.80E-01 | 0.393833 |
| 1.25E+01 | 2.30E-02 | 3.91E-01 | 5.81E-01 | 0.393186 |
| 1.26E+01 | 2.28E-02 | 3.90E-01 | 5.82E-01 | 0.392539 |
| 1.26E+01 | 2.27E-02 | 3.89E-01 | 5.83E-01 | 0.391893 |
| 1.26E+01 | 2.26E-02 | 3.89E-01 | 5.84E-01 | 0.391247 |
| 1.26E+01 | 2.24E-02 | 3.88E-01 | 5.84E-01 | 0.390602 |
| 1.26E+01 | 2.23E-02 | 3.87E-01 | 5.85E-01 | 0.389957 |
| 1.27E+01 | 2.22E-02 | 3.87E-01 | 5.86E-01 | 0.389312 |
| 1.27E+01 | 2.20E-02 | 3.86E-01 | 5.87E-01 | 0.388669 |
| 1.27E+01 | 2.19E-02 | 3.86E-01 | 5.87E-01 | 0.388025 |
| 1.27E+01 | 2.18E-02 | 3.85E-01 | 5.88E-01 | 0.387382 |
| 1.27E+01 | 2.16E-02 | 3.84E-01 | 5.89E-01 | 0.38674 |
| 1.28E+01 | 2.15E-02 | 3.84E-01 | 5.90E-01 | 0.386098 |
| 1.28E+01 | 2.14E-02 | 3.83E-01 | 5.91E-01 | 0.385456 |
| 1.28E+01 | 2.12E-02 | 3.82E-01 | 5.91E-01 | 0.384816 |
| 1.28E+01 | 2.11E-02 | 3.82E-01 | 5.92E-01 | 0.384175 |
| 1.28E+01 | 2.10E-02 | 3.81E-01 | 5.93E-01 | 0.383535 |
| 1.29E+01 | 2.09E-02 | 3.80E-01 | 5.94E-01 | 0.382896 |
| 1.29E+01 | 2.07E-02 | 3.80E-01 | 5.94E-01 | 0.382257 |
| 1.29E+01 | 2.06E-02 | 3.79E-01 | 5.95E-01 | 0.381619 |
| 1.29E+01 | 2.05E-02 | 3.79E-01 | 5.96E-01 | 0.380981 |
| 1.29E+01 | 2.04E-02 | 3.78E-01 | 5.97E-01 | 0.380344 |
| 1.30E+01 | 2.02E-02 | 3.77E-01 | 5.97E-01 | 0.379707 |
| 1.30E+01 | 2.01E-02 | 3.77E-01 | 5.98E-01 | 0.379071 |
| 1.30E+01 | 2.00E-02 | 3.76E-01 | 5.99E-01 | 0.378435 |
| 1.30E+01 | 1.99E-02 | 3.75E-01 | 6.00E-01 | 0.3778 |
| 1.30E+01 | 1.98E-02 | 3.75E-01 | 6.00E-01 | 0.377165 |
| 1.31E+01 | 1.96E-02 | 3.74E-01 | 6.01E-01 | 0.376531 |
| 1.31E+01 | 1.95E-02 | 3.73E-01 | 6.02E-01 | 0.375898 |
| 1.31E+01 | 1.94E-02 | 3.73E-01 | 6.03E-01 | 0.375265 |
| 1.31E+01 | 1.93E-02 | 3.72E-01 | 6.03E-01 | 0.374632 |
| 1.31E+01 | 1.92E-02 | 3.72E-01 | 6.04E-01 | 0.374 |

| | | | | |
|----------|----------|----------|----------|----------|
| 1.32E+01 | 1.91E-02 | 3.71E-01 | 6.05E-01 | 0.373369 |
| 1.32E+01 | 1.90E-02 | 3.70E-01 | 6.06E-01 | 0.372738 |
| 1.32E+01 | 1.88E-02 | 3.70E-01 | 6.06E-01 | 0.372108 |
| 1.32E+01 | 1.87E-02 | 3.69E-01 | 6.07E-01 | 0.371479 |
| 1.32E+01 | 1.86E-02 | 3.68E-01 | 6.08E-01 | 0.37085 |
| 1.33E+01 | 1.85E-02 | 3.68E-01 | 6.09E-01 | 0.370221 |
| 1.33E+01 | 1.84E-02 | 3.67E-01 | 6.09E-01 | 0.369594 |
| 1.33E+01 | 1.83E-02 | 3.67E-01 | 6.10E-01 | 0.368966 |
| 1.33E+01 | 1.82E-02 | 3.66E-01 | 6.11E-01 | 0.36834 |
| 1.33E+01 | 1.81E-02 | 3.65E-01 | 6.11E-01 | 0.367714 |
| 1.34E+01 | 1.80E-02 | 3.65E-01 | 6.12E-01 | 0.367088 |
| 1.34E+01 | 1.78E-02 | 3.64E-01 | 6.13E-01 | 0.366463 |
| 1.34E+01 | 1.77E-02 | 3.63E-01 | 6.14E-01 | 0.365839 |
| 1.34E+01 | 1.76E-02 | 3.63E-01 | 6.14E-01 | 0.365215 |
| 1.34E+01 | 1.75E-02 | 3.62E-01 | 6.15E-01 | 0.364592 |
| 1.35E+01 | 1.74E-02 | 3.62E-01 | 6.16E-01 | 0.36397 |
| 1.35E+01 | 1.73E-02 | 3.61E-01 | 6.17E-01 | 0.363348 |
| 1.35E+01 | 1.72E-02 | 3.60E-01 | 6.17E-01 | 0.362727 |
| 1.35E+01 | 1.71E-02 | 3.60E-01 | 6.18E-01 | 0.362106 |
| 1.35E+01 | 1.70E-02 | 3.59E-01 | 6.19E-01 | 0.361486 |
| 1.36E+01 | 1.69E-02 | 3.58E-01 | 6.19E-01 | 0.360867 |
| 1.36E+01 | 1.68E-02 | 3.58E-01 | 6.20E-01 | 0.360248 |
| 1.36E+01 | 1.67E-02 | 3.57E-01 | 6.21E-01 | 0.35963 |
| 1.36E+01 | 1.66E-02 | 3.57E-01 | 6.22E-01 | 0.359012 |
| 1.36E+01 | 1.65E-02 | 3.56E-01 | 6.22E-01 | 0.358396 |
| 1.37E+01 | 1.64E-02 | 3.55E-01 | 6.23E-01 | 0.357779 |
| 1.37E+01 | 1.63E-02 | 3.55E-01 | 6.24E-01 | 0.357164 |
| 1.37E+01 | 1.62E-02 | 3.54E-01 | 6.24E-01 | 0.356549 |
| 1.37E+01 | 1.61E-02 | 3.54E-01 | 6.25E-01 | 0.355934 |
| 1.37E+01 | 1.60E-02 | 3.53E-01 | 6.26E-01 | 0.355321 |
| 1.38E+01 | 1.59E-02 | 3.52E-01 | 6.27E-01 | 0.354708 |
| 1.38E+01 | 1.58E-02 | 3.52E-01 | 6.27E-01 | 0.354095 |
| 1.38E+01 | 1.57E-02 | 3.51E-01 | 6.28E-01 | 0.353484 |
| 1.38E+01 | 1.56E-02 | 3.51E-01 | 6.29E-01 | 0.352872 |
| 1.38E+01 | 1.55E-02 | 3.50E-01 | 6.29E-01 | 0.352262 |
| 1.39E+01 | 1.54E-02 | 3.49E-01 | 6.30E-01 | 0.351652 |
| 1.39E+01 | 1.54E-02 | 3.49E-01 | 6.31E-01 | 0.351043 |
| 1.39E+01 | 1.53E-02 | 3.48E-01 | 6.31E-01 | 0.350435 |
| 1.39E+01 | 1.52E-02 | 3.47E-01 | 6.32E-01 | 0.349827 |
| 1.39E+01 | 1.51E-02 | 3.47E-01 | 6.33E-01 | 0.34922 |
| 1.40E+01 | 1.50E-02 | 3.46E-01 | 6.34E-01 | 0.348613 |
| 1.40E+01 | 1.49E-02 | 3.46E-01 | 6.34E-01 | 0.348007 |
| 1.40E+01 | 1.48E-02 | 3.45E-01 | 6.35E-01 | 0.347402 |
| 1.40E+01 | 1.47E-02 | 3.44E-01 | 6.36E-01 | 0.346798 |
| 1.40E+01 | 1.46E-02 | 3.44E-01 | 6.36E-01 | 0.346194 |
| 1.41E+01 | 1.45E-02 | 3.43E-01 | 6.37E-01 | 0.345591 |
| 1.41E+01 | 1.45E-02 | 3.43E-01 | 6.38E-01 | 0.344988 |
| 1.41E+01 | 1.44E-02 | 3.42E-01 | 6.38E-01 | 0.344386 |
| 1.41E+01 | 1.43E-02 | 3.41E-01 | 6.39E-01 | 0.343785 |
| 1.41E+01 | 1.42E-02 | 3.41E-01 | 6.40E-01 | 0.343185 |
| 1.42E+01 | 1.41E-02 | 3.40E-01 | 6.40E-01 | 0.342585 |
| 1.42E+01 | 1.40E-02 | 3.40E-01 | 6.41E-01 | 0.341986 |
| 1.42E+01 | 1.39E-02 | 3.39E-01 | 6.42E-01 | 0.341388 |
| 1.42E+01 | 1.39E-02 | 3.39E-01 | 6.42E-01 | 0.34079 |
| 1.42E+01 | 1.38E-02 | 3.38E-01 | 6.43E-01 | 0.340193 |
| 1.43E+01 | 1.37E-02 | 3.37E-01 | 6.44E-01 | 0.339597 |

| | | | | |
|----------|----------|----------|----------|----------|
| 1.43E+01 | 1.36E-02 | 3.37E-01 | 6.44E-01 | 0.339001 |
| 1.43E+01 | 1.35E-02 | 3.36E-01 | 6.45E-01 | 0.338406 |
| 1.43E+01 | 1.34E-02 | 3.36E-01 | 6.46E-01 | 0.337812 |
| 1.43E+01 | 1.34E-02 | 3.35E-01 | 6.46E-01 | 0.337218 |
| 1.44E+01 | 1.33E-02 | 3.34E-01 | 6.47E-01 | 0.336625 |
| 1.44E+01 | 1.32E-02 | 3.34E-01 | 6.48E-01 | 0.336033 |
| 1.44E+01 | 1.31E-02 | 3.33E-01 | 6.48E-01 | 0.335442 |
| 1.44E+01 | 1.30E-02 | 3.33E-01 | 6.49E-01 | 0.334851 |
| 1.44E+01 | 1.30E-02 | 3.32E-01 | 6.50E-01 | 0.334261 |
| 1.45E+01 | 1.29E-02 | 3.31E-01 | 6.50E-01 | 0.333672 |
| 1.45E+01 | 1.28E-02 | 3.31E-01 | 6.51E-01 | 0.333083 |
| 1.45E+01 | 1.27E-02 | 3.30E-01 | 6.52E-01 | 0.332495 |
| 1.45E+01 | 1.27E-02 | 3.30E-01 | 6.52E-01 | 0.331908 |
| 1.45E+01 | 1.26E-02 | 3.29E-01 | 6.53E-01 | 0.331322 |
| 1.46E+01 | 1.25E-02 | 3.28E-01 | 6.54E-01 | 0.330736 |
| 1.46E+01 | 1.24E-02 | 3.28E-01 | 6.54E-01 | 0.330151 |
| 1.46E+01 | 1.24E-02 | 3.27E-01 | 6.55E-01 | 0.329566 |
| 1.46E+01 | 1.23E-02 | 3.27E-01 | 6.56E-01 | 0.328983 |
| 1.46E+01 | 1.22E-02 | 3.26E-01 | 6.56E-01 | 0.3284 |
| 1.47E+01 | 1.21E-02 | 3.26E-01 | 6.57E-01 | 0.327818 |
| 1.47E+01 | 1.21E-02 | 3.25E-01 | 6.58E-01 | 0.327236 |
| 1.47E+01 | 1.20E-02 | 3.24E-01 | 6.58E-01 | 0.326655 |
| 1.47E+01 | 1.19E-02 | 3.24E-01 | 6.59E-01 | 0.326075 |
| 1.47E+01 | 1.19E-02 | 3.23E-01 | 6.60E-01 | 0.325496 |
| 1.48E+01 | 1.18E-02 | 3.23E-01 | 6.60E-01 | 0.324918 |
| 1.48E+01 | 1.17E-02 | 3.22E-01 | 6.61E-01 | 0.32434 |
| 1.48E+01 | 1.16E-02 | 3.22E-01 | 6.62E-01 | 0.323763 |
| 1.48E+01 | 1.16E-02 | 3.21E-01 | 6.62E-01 | 0.323186 |
| 1.48E+01 | 1.15E-02 | 3.20E-01 | 6.63E-01 | 0.322611 |
| 1.49E+01 | 1.14E-02 | 3.20E-01 | 6.63E-01 | 0.322036 |
| 1.49E+01 | 1.14E-02 | 3.19E-01 | 6.64E-01 | 0.321461 |
| 1.49E+01 | 1.13E-02 | 3.19E-01 | 6.65E-01 | 0.320888 |
| 1.49E+01 | 1.12E-02 | 3.18E-01 | 6.65E-01 | 0.320315 |
| 1.49E+01 | 1.12E-02 | 3.18E-01 | 6.66E-01 | 0.319743 |
| 1.50E+01 | 1.11E-02 | 3.17E-01 | 6.67E-01 | 0.319172 |
| 1.50E+01 | 1.10E-02 | 3.16E-01 | 6.67E-01 | 0.318602 |
| 1.50E+01 | 1.10E-02 | 3.16E-01 | 6.68E-01 | 0.318032 |
| 1.50E+01 | 1.09E-02 | 3.15E-01 | 6.69E-01 | 0.317463 |
| 1.50E+01 | 1.08E-02 | 3.15E-01 | 6.69E-01 | 0.316894 |
| 1.51E+01 | 1.08E-02 | 3.14E-01 | 6.70E-01 | 0.316327 |
| 1.51E+01 | 1.07E-02 | 3.14E-01 | 6.70E-01 | 0.31576 |
| 1.51E+01 | 1.06E-02 | 3.13E-01 | 6.71E-01 | 0.315194 |
| 1.51E+01 | 1.06E-02 | 3.12E-01 | 6.72E-01 | 0.314629 |
| 1.51E+01 | 1.05E-02 | 3.12E-01 | 6.72E-01 | 0.314064 |
| 1.52E+01 | 1.04E-02 | 3.11E-01 | 6.73E-01 | 0.3135 |
| 1.52E+01 | 1.04E-02 | 3.11E-01 | 6.74E-01 | 0.312937 |
| 1.52E+01 | 1.03E-02 | 3.10E-01 | 6.74E-01 | 0.312375 |
| 1.52E+01 | 1.03E-02 | 3.10E-01 | 6.75E-01 | 0.311813 |
| 1.52E+01 | 1.02E-02 | 3.09E-01 | 6.75E-01 | 0.311252 |
| 1.53E+01 | 1.01E-02 | 3.09E-01 | 6.76E-01 | 0.310692 |
| 1.53E+01 | 1.01E-02 | 3.08E-01 | 6.77E-01 | 0.310133 |
| 1.53E+01 | 1.00E-02 | 3.07E-01 | 6.77E-01 | 0.309574 |
| 1.53E+01 | 9.95E-03 | 3.07E-01 | 6.78E-01 | 0.309016 |
| 1.53E+01 | 9.89E-03 | 3.06E-01 | 6.78E-01 | 0.308459 |
| 1.54E+01 | 9.83E-03 | 3.06E-01 | 6.79E-01 | 0.307903 |
| 1.54E+01 | 9.78E-03 | 3.05E-01 | 6.80E-01 | 0.307347 |

| | | | | |
|----------|----------|----------|----------|----------|
| 1.54E+01 | 9.72E-03 | 3.05E-01 | 6.80E-01 | 0.306792 |
| 1.54E+01 | 9.66E-03 | 3.04E-01 | 6.81E-01 | 0.306238 |
| 1.54E+01 | 9.60E-03 | 3.04E-01 | 6.82E-01 | 0.305685 |
| 1.55E+01 | 9.54E-03 | 3.03E-01 | 6.82E-01 | 0.305132 |
| 1.55E+01 | 9.49E-03 | 3.02E-01 | 6.83E-01 | 0.304581 |
| 1.55E+01 | 9.43E-03 | 3.02E-01 | 6.83E-01 | 0.30403 |
| 1.55E+01 | 9.37E-03 | 3.01E-01 | 6.84E-01 | 0.303479 |
| 1.55E+01 | 9.32E-03 | 3.01E-01 | 6.85E-01 | 0.30293 |
| 1.56E+01 | 9.26E-03 | 3.00E-01 | 6.85E-01 | 0.302381 |
| 1.56E+01 | 9.20E-03 | 3.00E-01 | 6.86E-01 | 0.301833 |
| 1.56E+01 | 9.15E-03 | 2.99E-01 | 6.86E-01 | 0.301286 |
| 1.56E+01 | 9.09E-03 | 2.99E-01 | 6.87E-01 | 0.300739 |
| 1.56E+01 | 9.04E-03 | 2.98E-01 | 6.88E-01 | 0.300193 |
| 1.57E+01 | 8.99E-03 | 2.98E-01 | 6.88E-01 | 0.299648 |
| 1.57E+01 | 8.93E-03 | 2.97E-01 | 6.89E-01 | 0.299104 |
| 1.57E+01 | 8.88E-03 | 2.96E-01 | 6.89E-01 | 0.298561 |
| 1.57E+01 | 8.82E-03 | 2.96E-01 | 6.90E-01 | 0.298018 |
| 1.57E+01 | 8.77E-03 | 2.95E-01 | 6.90E-01 | 0.297476 |
| 1.58E+01 | 8.72E-03 | 2.95E-01 | 6.91E-01 | 0.296935 |
| 1.58E+01 | 8.67E-03 | 2.94E-01 | 6.92E-01 | 0.296394 |
| 1.58E+01 | 8.61E-03 | 2.94E-01 | 6.92E-01 | 0.295855 |
| 1.58E+01 | 8.56E-03 | 2.93E-01 | 6.93E-01 | 0.295316 |
| 1.58E+01 | 8.51E-03 | 2.93E-01 | 6.93E-01 | 0.294778 |
| 1.59E+01 | 8.46E-03 | 2.92E-01 | 6.94E-01 | 0.29424 |
| 1.59E+01 | 8.41E-03 | 2.92E-01 | 6.95E-01 | 0.293704 |
| 1.59E+01 | 8.36E-03 | 2.91E-01 | 6.95E-01 | 0.293168 |
| 1.59E+01 | 8.31E-03 | 2.91E-01 | 6.96E-01 | 0.292633 |
| 1.59E+01 | 8.26E-03 | 2.90E-01 | 6.96E-01 | 0.292098 |
| 1.60E+01 | 8.21E-03 | 2.90E-01 | 6.97E-01 | 0.291565 |
| 1.60E+01 | 8.16E-03 | 2.89E-01 | 6.97E-01 | 0.291032 |
| 1.60E+01 | 8.11E-03 | 2.88E-01 | 6.98E-01 | 0.2905 |
| 1.60E+01 | 8.06E-03 | 2.88E-01 | 6.99E-01 | 0.289969 |
| 1.60E+01 | 8.01E-03 | 2.87E-01 | 6.99E-01 | 0.289438 |
| 1.61E+01 | 7.97E-03 | 2.87E-01 | 7.00E-01 | 0.288909 |
| 1.61E+01 | 7.92E-03 | 2.86E-01 | 7.00E-01 | 0.28838 |
| 1.61E+01 | 7.87E-03 | 2.86E-01 | 7.01E-01 | 0.287852 |
| 1.61E+01 | 7.82E-03 | 2.85E-01 | 7.02E-01 | 0.287324 |
| 1.61E+01 | 7.78E-03 | 2.85E-01 | 7.02E-01 | 0.286798 |
| 1.62E+01 | 7.73E-03 | 2.84E-01 | 7.03E-01 | 0.286272 |
| 1.62E+01 | 7.68E-03 | 2.84E-01 | 7.03E-01 | 0.285747 |
| 1.62E+01 | 7.64E-03 | 2.83E-01 | 7.04E-01 | 0.285222 |
| 1.62E+01 | 7.59E-03 | 2.83E-01 | 7.04E-01 | 0.284699 |
| 1.62E+01 | 7.55E-03 | 2.82E-01 | 7.05E-01 | 0.284176 |
| 1.63E+01 | 7.50E-03 | 2.82E-01 | 7.05E-01 | 0.283654 |
| 1.63E+01 | 7.46E-03 | 2.81E-01 | 7.06E-01 | 0.283133 |
| 1.63E+01 | 7.41E-03 | 2.81E-01 | 7.07E-01 | 0.282612 |
| 1.63E+01 | 7.37E-03 | 2.80E-01 | 7.07E-01 | 0.282093 |
| 1.63E+01 | 7.32E-03 | 2.80E-01 | 7.08E-01 | 0.281574 |
| 1.64E+01 | 7.28E-03 | 2.79E-01 | 7.08E-01 | 0.281055 |
| 1.64E+01 | 7.24E-03 | 2.79E-01 | 7.09E-01 | 0.280538 |
| 1.64E+01 | 7.19E-03 | 2.78E-01 | 7.09E-01 | 0.280021 |
| 1.64E+01 | 7.15E-03 | 2.78E-01 | 7.10E-01 | 0.279506 |
| 1.64E+01 | 7.11E-03 | 2.77E-01 | 7.10E-01 | 0.27899 |
| 1.65E+01 | 7.06E-03 | 2.76E-01 | 7.11E-01 | 0.278476 |
| 1.65E+01 | 7.02E-03 | 2.76E-01 | 7.12E-01 | 0.277963 |
| 1.65E+01 | 6.98E-03 | 2.75E-01 | 7.12E-01 | 0.27745 |

| | | | | |
|----------|----------|----------|----------|----------|
| 1.65E+01 | 6.94E-03 | 2.75E-01 | 7.13E-01 | 0.276938 |
| 1.65E+01 | 6.90E-03 | 2.74E-01 | 7.13E-01 | 0.276426 |
| 1.66E+01 | 6.85E-03 | 2.74E-01 | 7.14E-01 | 0.275916 |
| 1.66E+01 | 6.81E-03 | 2.73E-01 | 7.14E-01 | 0.275406 |
| 1.66E+01 | 6.77E-03 | 2.73E-01 | 7.15E-01 | 0.274897 |
| 1.66E+01 | 6.73E-03 | 2.72E-01 | 7.15E-01 | 0.274389 |
| 1.66E+01 | 6.69E-03 | 2.72E-01 | 7.16E-01 | 0.273882 |
| 1.67E+01 | 6.65E-03 | 2.71E-01 | 7.17E-01 | 0.273375 |
| 1.67E+01 | 6.61E-03 | 2.71E-01 | 7.17E-01 | 0.272869 |
| 1.67E+01 | 6.57E-03 | 2.70E-01 | 7.18E-01 | 0.272364 |
| 1.67E+01 | 6.53E-03 | 2.70E-01 | 7.18E-01 | 0.27186 |
| 1.67E+01 | 6.49E-03 | 2.69E-01 | 7.19E-01 | 0.271356 |
| 1.68E+01 | 6.45E-03 | 2.69E-01 | 7.19E-01 | 0.270854 |
| 1.68E+01 | 6.41E-03 | 2.68E-01 | 7.20E-01 | 0.270352 |
| 1.68E+01 | 6.38E-03 | 2.68E-01 | 7.20E-01 | 0.26985 |
| 1.68E+01 | 6.34E-03 | 2.67E-01 | 7.21E-01 | 0.26935 |
| 1.68E+01 | 6.30E-03 | 2.67E-01 | 7.21E-01 | 0.26885 |
| 1.69E+01 | 6.26E-03 | 2.66E-01 | 7.22E-01 | 0.268351 |
| 1.69E+01 | 6.22E-03 | 2.66E-01 | 7.22E-01 | 0.267853 |
| 1.69E+01 | 6.19E-03 | 2.65E-01 | 7.23E-01 | 0.267356 |
| 1.69E+01 | 6.15E-03 | 2.65E-01 | 7.23E-01 | 0.266859 |
| 1.69E+01 | 6.11E-03 | 2.64E-01 | 7.24E-01 | 0.266363 |
| 1.70E+01 | 6.08E-03 | 2.64E-01 | 7.25E-01 | 0.265868 |
| 1.70E+01 | 6.04E-03 | 2.63E-01 | 7.25E-01 | 0.265374 |
| 1.70E+01 | 6.00E-03 | 2.63E-01 | 7.26E-01 | 0.26488 |
| 1.70E+01 | 5.97E-03 | 2.62E-01 | 7.26E-01 | 0.264387 |
| 1.70E+01 | 5.93E-03 | 2.62E-01 | 7.27E-01 | 0.263895 |
| 1.71E+01 | 5.90E-03 | 2.61E-01 | 7.27E-01 | 0.263404 |
| 1.71E+01 | 5.86E-03 | 2.61E-01 | 7.28E-01 | 0.262914 |
| 1.71E+01 | 5.83E-03 | 2.61E-01 | 7.28E-01 | 0.262424 |
| 1.71E+01 | 5.79E-03 | 2.60E-01 | 7.29E-01 | 0.261935 |
| 1.71E+01 | 5.76E-03 | 2.60E-01 | 7.29E-01 | 0.261447 |
| 1.72E+01 | 5.72E-03 | 2.59E-01 | 7.30E-01 | 0.260959 |
| 1.72E+01 | 5.69E-03 | 2.59E-01 | 7.30E-01 | 0.260473 |
| 1.72E+01 | 5.65E-03 | 2.58E-01 | 7.31E-01 | 0.259987 |
| 1.72E+01 | 5.62E-03 | 2.58E-01 | 7.31E-01 | 0.259502 |
| 1.72E+01 | 5.59E-03 | 2.57E-01 | 7.32E-01 | 0.259017 |
| 1.73E+01 | 5.55E-03 | 2.57E-01 | 7.32E-01 | 0.258534 |
| 1.73E+01 | 5.52E-03 | 2.56E-01 | 7.33E-01 | 0.258051 |
| 1.73E+01 | 5.49E-03 | 2.56E-01 | 7.33E-01 | 0.257569 |
| 1.73E+01 | 5.45E-03 | 2.55E-01 | 7.34E-01 | 0.257087 |
| 1.73E+01 | 5.42E-03 | 2.55E-01 | 7.34E-01 | 0.256607 |
| 1.74E+01 | 5.39E-03 | 2.54E-01 | 7.35E-01 | 0.256127 |
| 1.74E+01 | 5.36E-03 | 2.54E-01 | 7.35E-01 | 0.255648 |
| 1.74E+01 | 5.32E-03 | 2.53E-01 | 7.36E-01 | 0.25517 |
| 1.74E+01 | 5.29E-03 | 2.53E-01 | 7.36E-01 | 0.254692 |
| 1.74E+01 | 5.26E-03 | 2.52E-01 | 7.37E-01 | 0.254215 |
| 1.75E+01 | 5.23E-03 | 2.52E-01 | 7.37E-01 | 0.253739 |
| 1.75E+01 | 5.20E-03 | 2.51E-01 | 7.38E-01 | 0.253264 |
| 1.75E+01 | 5.17E-03 | 2.51E-01 | 7.38E-01 | 0.25279 |
| 1.75E+01 | 5.13E-03 | 2.50E-01 | 7.39E-01 | 0.252316 |
| 1.75E+01 | 5.10E-03 | 2.50E-01 | 7.39E-01 | 0.251843 |
| 1.76E+01 | 5.07E-03 | 2.50E-01 | 7.40E-01 | 0.251371 |
| 1.76E+01 | 5.04E-03 | 2.49E-01 | 7.40E-01 | 0.250899 |
| 1.76E+01 | 5.01E-03 | 2.49E-01 | 7.41E-01 | 0.250429 |
| 1.76E+01 | 4.98E-03 | 2.48E-01 | 7.41E-01 | 0.249959 |

| | | | | |
|----------|----------|----------|----------|----------|
| 1.76E+01 | 4.95E-03 | 2.48E-01 | 7.42E-01 | 0.24949 |
| 1.77E+01 | 4.92E-03 | 2.47E-01 | 7.42E-01 | 0.249021 |
| 1.77E+01 | 4.89E-03 | 2.47E-01 | 7.43E-01 | 0.248553 |
| 1.77E+01 | 4.86E-03 | 2.46E-01 | 7.43E-01 | 0.248087 |
| 1.77E+01 | 4.83E-03 | 2.46E-01 | 7.44E-01 | 0.24762 |
| 1.77E+01 | 4.81E-03 | 2.45E-01 | 7.44E-01 | 0.247155 |
| 1.78E+01 | 4.78E-03 | 2.45E-01 | 7.45E-01 | 0.24669 |
| 1.78E+01 | 4.75E-03 | 2.44E-01 | 7.45E-01 | 0.246227 |
| 1.78E+01 | 4.72E-03 | 2.44E-01 | 7.46E-01 | 0.245763 |
| 1.78E+01 | 4.69E-03 | 2.43E-01 | 7.46E-01 | 0.245301 |
| 1.78E+01 | 4.66E-03 | 2.43E-01 | 7.47E-01 | 0.244839 |
| 1.79E+01 | 4.63E-03 | 2.43E-01 | 7.47E-01 | 0.244379 |
| 1.79E+01 | 4.61E-03 | 2.42E-01 | 7.48E-01 | 0.243918 |
| 1.79E+01 | 4.58E-03 | 2.42E-01 | 7.48E-01 | 0.243459 |
| 1.79E+01 | 4.55E-03 | 2.41E-01 | 7.49E-01 | 0.243 |
| 1.79E+01 | 4.52E-03 | 2.41E-01 | 7.49E-01 | 0.242543 |
| 1.80E+01 | 4.50E-03 | 2.40E-01 | 7.50E-01 | 0.242085 |
| 1.80E+01 | 4.47E-03 | 2.40E-01 | 7.50E-01 | 0.241629 |
| 1.80E+01 | 4.44E-03 | 2.39E-01 | 7.51E-01 | 0.241173 |
| 1.80E+01 | 4.42E-03 | 2.39E-01 | 7.51E-01 | 0.240719 |
| 1.80E+01 | 4.39E-03 | 2.38E-01 | 7.52E-01 | 0.240264 |
| 1.81E+01 | 4.36E-03 | 2.38E-01 | 7.52E-01 | 0.239811 |
| 1.81E+01 | 4.34E-03 | 2.38E-01 | 7.53E-01 | 0.239358 |
| 1.81E+01 | 4.31E-03 | 2.37E-01 | 7.53E-01 | 0.238907 |
| 1.81E+01 | 4.29E-03 | 2.37E-01 | 7.54E-01 | 0.238455 |
| 1.81E+01 | 4.26E-03 | 2.36E-01 | 7.54E-01 | 0.238005 |
| 1.82E+01 | 4.23E-03 | 2.36E-01 | 7.54E-01 | 0.237555 |
| 1.82E+01 | 4.21E-03 | 2.35E-01 | 7.55E-01 | 0.237106 |
| 1.82E+01 | 4.18E-03 | 2.35E-01 | 7.55E-01 | 0.236658 |
| 1.82E+01 | 4.16E-03 | 2.34E-01 | 7.56E-01 | 0.236211 |
| 1.82E+01 | 4.13E-03 | 2.34E-01 | 7.56E-01 | 0.235764 |
| 1.83E+01 | 4.11E-03 | 2.34E-01 | 7.57E-01 | 0.235318 |
| 1.83E+01 | 4.08E-03 | 2.33E-01 | 7.57E-01 | 0.234873 |
| 1.83E+01 | 4.06E-03 | 2.33E-01 | 7.58E-01 | 0.234429 |
| 1.83E+01 | 4.04E-03 | 2.32E-01 | 7.58E-01 | 0.233985 |
| 1.83E+01 | 4.01E-03 | 2.32E-01 | 7.59E-01 | 0.233542 |
| 1.84E+01 | 3.99E-03 | 2.31E-01 | 7.59E-01 | 0.2331 |
| 1.84E+01 | 3.96E-03 | 2.31E-01 | 7.60E-01 | 0.232658 |
| 1.84E+01 | 3.94E-03 | 2.30E-01 | 7.60E-01 | 0.232217 |
| 1.84E+01 | 3.92E-03 | 2.30E-01 | 7.61E-01 | 0.231777 |
| 1.84E+01 | 3.89E-03 | 2.30E-01 | 7.61E-01 | 0.231338 |
| 1.85E+01 | 3.87E-03 | 2.29E-01 | 7.61E-01 | 0.230899 |
| 1.85E+01 | 3.85E-03 | 2.29E-01 | 7.62E-01 | 0.230462 |
| 1.85E+01 | 3.82E-03 | 2.28E-01 | 7.62E-01 | 0.230025 |
| 1.85E+01 | 3.80E-03 | 2.28E-01 | 7.63E-01 | 0.229588 |
| 1.85E+01 | 3.78E-03 | 2.27E-01 | 7.63E-01 | 0.229153 |
| 1.86E+01 | 3.75E-03 | 2.27E-01 | 7.64E-01 | 0.228718 |
| 1.86E+01 | 3.73E-03 | 2.27E-01 | 7.64E-01 | 0.228284 |
| 1.86E+01 | 3.71E-03 | 2.26E-01 | 7.65E-01 | 0.22785 |
| 1.86E+01 | 3.69E-03 | 2.26E-01 | 7.65E-01 | 0.227417 |
| 1.86E+01 | 3.67E-03 | 2.25E-01 | 7.66E-01 | 0.226985 |
| 1.87E+01 | 3.64E-03 | 2.25E-01 | 7.66E-01 | 0.226554 |
| 1.87E+01 | 3.62E-03 | 2.24E-01 | 7.66E-01 | 0.226124 |
| 1.87E+01 | 3.60E-03 | 2.24E-01 | 7.67E-01 | 0.225694 |
| 1.87E+01 | 3.58E-03 | 2.24E-01 | 7.67E-01 | 0.225265 |
| 1.87E+01 | 3.56E-03 | 2.23E-01 | 7.68E-01 | 0.224836 |

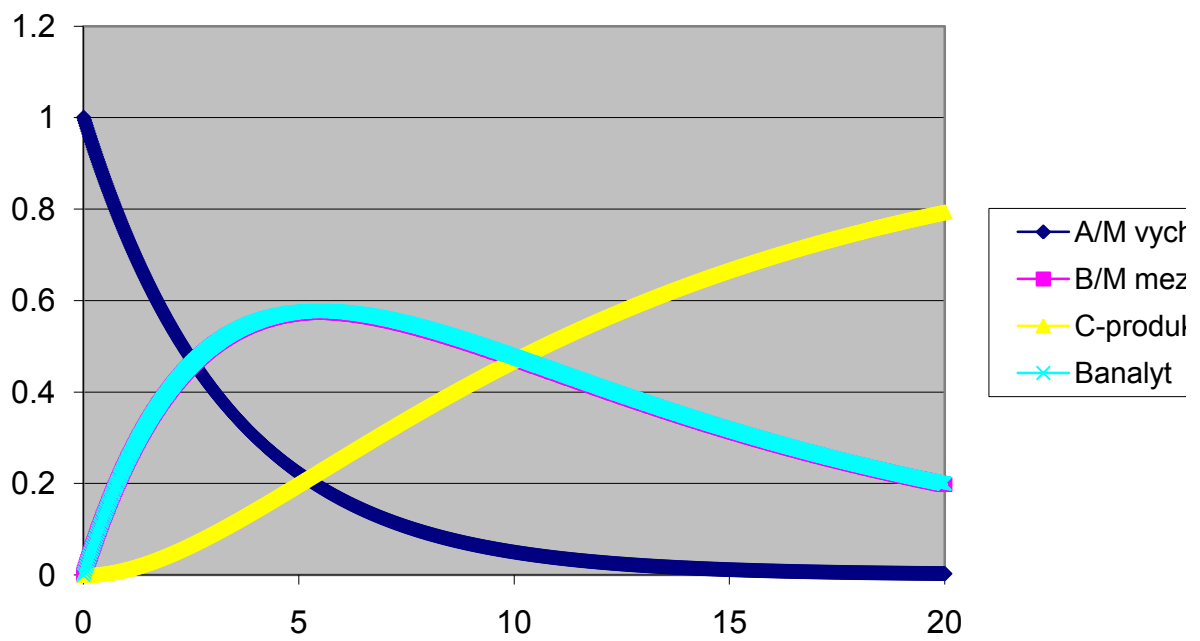
| | | | | |
|----------|----------|----------|----------|----------|
| 1.88E+01 | 3.54E-03 | 2.23E-01 | 7.68E-01 | 0.224409 |
| 1.88E+01 | 3.51E-03 | 2.22E-01 | 7.69E-01 | 0.223982 |
| 1.88E+01 | 3.49E-03 | 2.22E-01 | 7.69E-01 | 0.223556 |
| 1.88E+01 | 3.47E-03 | 2.21E-01 | 7.70E-01 | 0.22313 |
| 1.88E+01 | 3.45E-03 | 2.21E-01 | 7.70E-01 | 0.222706 |
| 1.89E+01 | 3.43E-03 | 2.21E-01 | 7.70E-01 | 0.222282 |
| 1.89E+01 | 3.41E-03 | 2.20E-01 | 7.71E-01 | 0.221858 |
| 1.89E+01 | 3.39E-03 | 2.20E-01 | 7.71E-01 | 0.221436 |
| 1.89E+01 | 3.37E-03 | 2.19E-01 | 7.72E-01 | 0.221014 |
| 1.89E+01 | 3.35E-03 | 2.19E-01 | 7.72E-01 | 0.220593 |
| 1.90E+01 | 3.33E-03 | 2.19E-01 | 7.73E-01 | 0.220173 |
| 1.90E+01 | 3.31E-03 | 2.18E-01 | 7.73E-01 | 0.219753 |
| 1.90E+01 | 3.29E-03 | 2.18E-01 | 7.73E-01 | 0.219334 |
| 1.90E+01 | 3.27E-03 | 2.17E-01 | 7.74E-01 | 0.218916 |
| 1.90E+01 | 3.25E-03 | 2.17E-01 | 7.74E-01 | 0.218498 |
| 1.91E+01 | 3.23E-03 | 2.16E-01 | 7.75E-01 | 0.218081 |
| 1.91E+01 | 3.21E-03 | 2.16E-01 | 7.75E-01 | 0.217665 |
| 1.91E+01 | 3.19E-03 | 2.16E-01 | 7.76E-01 | 0.21725 |
| 1.91E+01 | 3.17E-03 | 2.15E-01 | 7.76E-01 | 0.216835 |
| 1.91E+01 | 3.15E-03 | 2.15E-01 | 7.77E-01 | 0.216421 |
| 1.92E+01 | 3.13E-03 | 2.14E-01 | 7.77E-01 | 0.216008 |
| 1.92E+01 | 3.12E-03 | 2.14E-01 | 7.77E-01 | 0.215596 |
| 1.92E+01 | 3.10E-03 | 2.14E-01 | 7.78E-01 | 0.215184 |
| 1.92E+01 | 3.08E-03 | 2.13E-01 | 7.78E-01 | 0.214773 |
| 1.92E+01 | 3.06E-03 | 2.13E-01 | 7.79E-01 | 0.214362 |
| 1.93E+01 | 3.04E-03 | 2.12E-01 | 7.79E-01 | 0.213953 |
| 1.93E+01 | 3.02E-03 | 2.12E-01 | 7.79E-01 | 0.213544 |
| 1.93E+01 | 3.01E-03 | 2.12E-01 | 7.80E-01 | 0.213135 |
| 1.93E+01 | 2.99E-03 | 2.11E-01 | 7.80E-01 | 0.212728 |
| 1.93E+01 | 2.97E-03 | 2.11E-01 | 7.81E-01 | 0.212321 |
| 1.94E+01 | 2.95E-03 | 2.10E-01 | 7.81E-01 | 0.211915 |
| 1.94E+01 | 2.93E-03 | 2.10E-01 | 7.82E-01 | 0.211509 |
| 1.94E+01 | 2.92E-03 | 2.09E-01 | 7.82E-01 | 0.211105 |
| 1.94E+01 | 2.90E-03 | 2.09E-01 | 7.82E-01 | 0.2107 |
| 1.94E+01 | 2.88E-03 | 2.09E-01 | 7.83E-01 | 0.210297 |
| 1.95E+01 | 2.86E-03 | 2.08E-01 | 7.83E-01 | 0.209894 |
| 1.95E+01 | 2.85E-03 | 2.08E-01 | 7.84E-01 | 0.209493 |
| 1.95E+01 | 2.83E-03 | 2.07E-01 | 7.84E-01 | 0.209091 |
| 1.95E+01 | 2.81E-03 | 2.07E-01 | 7.85E-01 | 0.208691 |
| 1.95E+01 | 2.80E-03 | 2.07E-01 | 7.85E-01 | 0.208291 |
| 1.96E+01 | 2.78E-03 | 2.06E-01 | 7.85E-01 | 0.207892 |
| 1.96E+01 | 2.76E-03 | 2.06E-01 | 7.86E-01 | 0.207493 |
| 1.96E+01 | 2.75E-03 | 2.06E-01 | 7.86E-01 | 0.207095 |
| 1.96E+01 | 2.73E-03 | 2.05E-01 | 7.87E-01 | 0.206698 |
| 1.96E+01 | 2.71E-03 | 2.05E-01 | 7.87E-01 | 0.206302 |
| 1.97E+01 | 2.70E-03 | 2.04E-01 | 7.87E-01 | 0.205906 |
| 1.97E+01 | 2.68E-03 | 2.04E-01 | 7.88E-01 | 0.205511 |
| 1.97E+01 | 2.66E-03 | 2.04E-01 | 7.88E-01 | 0.205117 |
| 1.97E+01 | 2.65E-03 | 2.03E-01 | 7.89E-01 | 0.204723 |
| 1.97E+01 | 2.63E-03 | 2.03E-01 | 7.89E-01 | 0.20433 |
| 1.98E+01 | 2.62E-03 | 2.02E-01 | 7.89E-01 | 0.203938 |
| 1.98E+01 | 2.60E-03 | 2.02E-01 | 7.90E-01 | 0.203547 |
| 1.98E+01 | 2.59E-03 | 2.02E-01 | 7.90E-01 | 0.203156 |
| 1.98E+01 | 2.57E-03 | 2.01E-01 | 7.91E-01 | 0.202766 |
| 1.98E+01 | 2.55E-03 | 2.01E-01 | 7.91E-01 | 0.202376 |
| 1.99E+01 | 2.54E-03 | 2.00E-01 | 7.91E-01 | 0.201987 |

| | | | | |
|----------|----------|----------|----------|----------|
| 1.99E+01 | 2.52E-03 | 2.00E-01 | 7.92E-01 | 0.201599 |
| 1.99E+01 | 2.51E-03 | 2.00E-01 | 7.92E-01 | 0.201212 |
| 1.99E+01 | 2.49E-03 | 1.99E-01 | 7.93E-01 | 0.200825 |
| 1.99E+01 | 2.48E-03 | 1.99E-01 | 7.93E-01 | 0.200439 |
| 2.00E+01 | 2.46E-03 | 1.99E-01 | 7.93E-01 | 0.200054 |
| 2.00E+01 | 2.45E-03 | 1.98E-01 | 7.94E-01 | 0.199669 |
| 2.00E+01 | 2.43E-03 | 1.98E-01 | 7.94E-01 | 0.199285 |
| 2.00E+01 | 2.42E-03 | 1.97E-01 | 7.95E-01 | 0.198901 |
| 2.00E+01 | 2.41E-03 | 1.97E-01 | 7.95E-01 | 0.198519 |
| 2.01E+01 | 2.39E-03 | 1.97E-01 | 7.95E-01 | 0.198137 |
| 2.01E+01 | 2.38E-03 | 1.96E-01 | 7.96E-01 | 0.197755 |
| 2.01E+01 | 2.36E-03 | 1.96E-01 | 7.96E-01 | 0.197375 |
| 2.01E+01 | 2.35E-03 | 1.95E-01 | 7.97E-01 | 0.196995 |
| 2.01E+01 | 2.33E-03 | 1.95E-01 | 7.97E-01 | 0.196615 |
| 2.02E+01 | 2.32E-03 | 1.95E-01 | 7.97E-01 | 0.196237 |
| 2.02E+01 | 2.31E-03 | 1.94E-01 | 7.98E-01 | 0.195859 |
| 2.02E+01 | 2.29E-03 | 1.94E-01 | 7.98E-01 | 0.195482 |
| 2.02E+01 | 2.28E-03 | 1.94E-01 | 7.99E-01 | 0.195105 |
| 2.02E+01 | 2.26E-03 | 1.93E-01 | 7.99E-01 | 0.194729 |
| 2.03E+01 | 2.25E-03 | 1.93E-01 | 7.99E-01 | 0.194354 |
| 2.03E+01 | 2.24E-03 | 1.92E-01 | 8.00E-01 | 0.193979 |
| 2.03E+01 | 2.22E-03 | 1.92E-01 | 8.00E-01 | 0.193605 |
| 2.03E+01 | 2.21E-03 | 1.92E-01 | 8.00E-01 | 0.193232 |
| 2.03E+01 | 2.20E-03 | 1.91E-01 | 8.01E-01 | 0.192859 |
| 2.04E+01 | 2.18E-03 | 1.91E-01 | 8.01E-01 | 0.192487 |
| 2.04E+01 | 2.17E-03 | 1.91E-01 | 8.02E-01 | 0.192116 |
| 2.04E+01 | 2.16E-03 | 1.90E-01 | 8.02E-01 | 0.191745 |
| 2.04E+01 | 2.15E-03 | 1.90E-01 | 8.02E-01 | 0.191375 |
| 2.04E+01 | 2.13E-03 | 1.90E-01 | 8.03E-01 | 0.191006 |
| 2.05E+01 | 2.12E-03 | 1.89E-01 | 8.03E-01 | 0.190637 |
| 2.05E+01 | 2.11E-03 | 1.89E-01 | 8.03E-01 | 0.190269 |
| 2.05E+01 | 2.09E-03 | 1.88E-01 | 8.04E-01 | 0.189902 |
| 2.05E+01 | 2.08E-03 | 1.88E-01 | 8.04E-01 | 0.189535 |
| 2.05E+01 | 2.07E-03 | 1.88E-01 | 8.05E-01 | 0.189169 |
| 2.06E+01 | 2.06E-03 | 1.87E-01 | 8.05E-01 | 0.188804 |
| 2.06E+01 | 2.04E-03 | 1.87E-01 | 8.05E-01 | 0.188439 |
| 2.06E+01 | 2.03E-03 | 1.87E-01 | 8.06E-01 | 0.188075 |
| 2.06E+01 | 2.02E-03 | 1.86E-01 | 8.06E-01 | 0.187712 |
| 2.06E+01 | 2.01E-03 | 1.86E-01 | 8.06E-01 | 0.187349 |
| 2.07E+01 | 2.00E-03 | 1.86E-01 | 8.07E-01 | 0.186987 |
| 2.07E+01 | 1.98E-03 | 1.85E-01 | 8.07E-01 | 0.186626 |
| 2.07E+01 | 1.97E-03 | 1.85E-01 | 8.08E-01 | 0.186265 |
| 2.07E+01 | 1.96E-03 | 1.84E-01 | 8.08E-01 | 0.185905 |
| 2.07E+01 | 1.95E-03 | 1.84E-01 | 8.08E-01 | 0.185545 |
| 2.08E+01 | 1.94E-03 | 1.84E-01 | 8.09E-01 | 0.185186 |
| 2.08E+01 | 1.93E-03 | 1.83E-01 | 8.09E-01 | 0.184828 |
| 2.08E+01 | 1.91E-03 | 1.83E-01 | 8.09E-01 | 0.184471 |
| 2.08E+01 | 1.90E-03 | 1.83E-01 | 8.10E-01 | 0.184114 |
| 2.08E+01 | 1.89E-03 | 1.82E-01 | 8.10E-01 | 0.183757 |
| 2.09E+01 | 1.88E-03 | 1.82E-01 | 8.11E-01 | 0.183402 |
| 2.09E+01 | 1.87E-03 | 1.82E-01 | 8.11E-01 | 0.183047 |
| 2.09E+01 | 1.86E-03 | 1.81E-01 | 8.11E-01 | 0.182692 |
| 2.09E+01 | 1.85E-03 | 1.81E-01 | 8.12E-01 | 0.182339 |
| 2.09E+01 | 1.83E-03 | 1.81E-01 | 8.12E-01 | 0.181986 |
| 2.10E+01 | 1.82E-03 | 1.80E-01 | 8.12E-01 | 0.181633 |
| 2.10E+01 | 1.81E-03 | 1.80E-01 | 8.13E-01 | 0.181281 |

| | | | | |
|----------|----------|----------|----------|----------|
| 2.10E+01 | 1.80E-03 | 1.80E-01 | 8.13E-01 | 0.18093 |
| 2.10E+01 | 1.79E-03 | 1.79E-01 | 8.13E-01 | 0.18058 |
| 2.10E+01 | 1.78E-03 | 1.79E-01 | 8.14E-01 | 0.18023 |
| 2.11E+01 | 1.77E-03 | 1.78E-01 | 8.14E-01 | 0.179881 |
| 2.11E+01 | 1.76E-03 | 1.78E-01 | 8.14E-01 | 0.179532 |
| 2.11E+01 | 1.75E-03 | 1.78E-01 | 8.15E-01 | 0.179184 |
| 2.11E+01 | 1.74E-03 | 1.77E-01 | 8.15E-01 | 0.178837 |
| 2.11E+01 | 1.73E-03 | 1.77E-01 | 8.16E-01 | 0.17849 |
| 2.12E+01 | 1.72E-03 | 1.77E-01 | 8.16E-01 | 0.178144 |
| 2.12E+01 | 1.71E-03 | 1.76E-01 | 8.16E-01 | 0.177798 |
| 2.12E+01 | 1.70E-03 | 1.76E-01 | 8.17E-01 | 0.177453 |
| 2.12E+01 | 1.69E-03 | 1.76E-01 | 8.17E-01 | 0.177109 |
| 2.12E+01 | 1.68E-03 | 1.75E-01 | 8.17E-01 | 0.176766 |
| 2.13E+01 | 1.67E-03 | 1.75E-01 | 8.18E-01 | 0.176423 |
| 2.13E+01 | 1.66E-03 | 1.75E-01 | 8.18E-01 | 0.17608 |
| 2.13E+01 | 1.65E-03 | 1.74E-01 | 8.18E-01 | 0.175739 |
| 2.13E+01 | 1.64E-03 | 1.74E-01 | 8.19E-01 | 0.175397 |
| 2.13E+01 | 1.63E-03 | 1.74E-01 | 8.19E-01 | 0.175057 |
| 2.14E+01 | 1.62E-03 | 1.73E-01 | 8.19E-01 | 0.174717 |

s

analyticke reseni



nozi latka
zprodukt
kt

A → k₁, k₋₁ → B → k₂ → C

| | | | | |
|-----------------|----------------------|-----------------------|-----------------------|----------|
| | | Pocatecni koncentrace | time_step | 2.00E-02 |
| k ₁ | 0.3 s ⁻¹ | A ₀ | 1 mol l ⁻¹ | |
| k ₂ | 0.1 s ⁻¹ | B ₀ | 0 | |
| k ₋₁ | 0.15 s ⁻¹ | C ₀ | 0 | |

$$d[B]/dt = k_1[A] - k_{-1}[B] - k_2[B]$$

$$-d[A]/dt = k_1[A] - k_{-1}[B]$$

$$d[C]/dt = k_2[B]$$

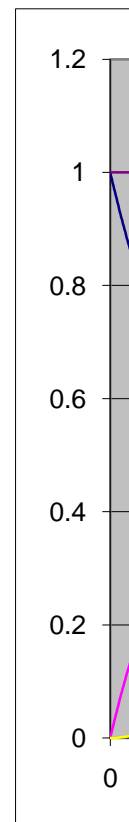
Numericke reseni:

$$[A(t+dt)] = [A(t)] - dt \cdot (k_1 [A(t)] - k_{-1} [B(t)])$$

$$[B(t+dt)] = [B(t)] + dt \cdot \{ k_1 [A(t)] - k_2 [B(t)] \}$$

$$[C(t+dt)] = [C(t)] + dt \cdot k_2 [B(t)]$$

| t/ s | A/ M | B/ M | C/ M | A+B+C |
|----------|----------|----------|----------|----------|
| 0 | 1 | 0 | 0 | 1 |
| 2.00E-02 | 9.94E-01 | 6.00E-03 | 1.20E-05 | 1.000012 |
| 4.00E-02 | 9.88E-01 | 1.19E-02 | 3.59E-05 | 1.000024 |
| 6.00E-02 | 9.82E-01 | 1.78E-02 | 7.15E-05 | 1.000036 |
| 8.00E-02 | 9.76E-01 | 2.36E-02 | 1.19E-04 | 1.000047 |
| 1.00E-01 | 9.71E-01 | 2.93E-02 | 1.77E-04 | 1.000059 |
| 1.20E-01 | 9.65E-01 | 3.50E-02 | 2.47E-04 | 1.00007 |
| 1.40E-01 | 9.59E-01 | 4.06E-02 | 3.29E-04 | 1.000081 |
| 1.60E-01 | 9.53E-01 | 4.62E-02 | 4.21E-04 | 1.000092 |
| 1.80E-01 | 9.48E-01 | 5.17E-02 | 5.24E-04 | 1.000103 |
| 2.00E-01 | 9.42E-01 | 5.71E-02 | 6.39E-04 | 1.000114 |
| 2.20E-01 | 9.37E-01 | 6.25E-02 | 7.64E-04 | 1.000125 |
| 2.40E-01 | 9.31E-01 | 6.78E-02 | 8.99E-04 | 1.000136 |
| 2.60E-01 | 9.26E-01 | 7.30E-02 | 1.05E-03 | 1.000146 |
| 2.80E-01 | 9.21E-01 | 7.82E-02 | 1.20E-03 | 1.000156 |
| 3.00E-01 | 9.15E-01 | 8.34E-02 | 1.37E-03 | 1.000167 |
| 3.20E-01 | 9.10E-01 | 8.84E-02 | 1.55E-03 | 1.000177 |
| 3.40E-01 | 9.05E-01 | 9.35E-02 | 1.73E-03 | 1.000187 |
| 3.60E-01 | 9.00E-01 | 9.84E-02 | 1.93E-03 | 1.000197 |
| 3.80E-01 | 8.95E-01 | 1.03E-01 | 2.14E-03 | 1.000207 |
| 4.00E-01 | 8.90E-01 | 1.08E-01 | 2.35E-03 | 1.000216 |
| 4.20E-01 | 8.85E-01 | 1.13E-01 | 2.58E-03 | 1.000226 |
| 4.40E-01 | 8.80E-01 | 1.18E-01 | 2.81E-03 | 1.000235 |
| 4.60E-01 | 8.75E-01 | 1.22E-01 | 3.06E-03 | 1.000245 |
| 4.80E-01 | 8.70E-01 | 1.27E-01 | 3.31E-03 | 1.000254 |
| 5.00E-01 | 8.65E-01 | 1.32E-01 | 3.58E-03 | 1.000263 |
| 5.20E-01 | 8.60E-01 | 1.36E-01 | 3.85E-03 | 1.000272 |
| 5.40E-01 | 8.56E-01 | 1.41E-01 | 4.13E-03 | 1.000281 |
| 5.60E-01 | 8.51E-01 | 1.45E-01 | 4.42E-03 | 1.00029 |
| 5.80E-01 | 8.46E-01 | 1.49E-01 | 4.72E-03 | 1.000299 |
| 6.00E-01 | 8.42E-01 | 1.54E-01 | 5.03E-03 | 1.000308 |
| 6.20E-01 | 8.37E-01 | 1.58E-01 | 5.34E-03 | 1.000316 |
| 6.40E-01 | 8.32E-01 | 1.62E-01 | 5.67E-03 | 1.000325 |
| 6.60E-01 | 8.28E-01 | 1.66E-01 | 6.00E-03 | 1.000333 |
| 6.80E-01 | 8.23E-01 | 1.71E-01 | 6.34E-03 | 1.000341 |
| 7.00E-01 | 8.19E-01 | 1.75E-01 | 6.69E-03 | 1.000349 |
| 7.20E-01 | 8.15E-01 | 1.79E-01 | 7.05E-03 | 1.000357 |
| 7.40E-01 | 8.10E-01 | 1.83E-01 | 7.41E-03 | 1.000365 |
| 7.60E-01 | 8.06E-01 | 1.87E-01 | 7.79E-03 | 1.000373 |
| 7.80E-01 | 8.02E-01 | 1.91E-01 | 8.17E-03 | 1.000381 |
| 8.00E-01 | 7.97E-01 | 1.94E-01 | 8.56E-03 | 1.000389 |
| 8.20E-01 | 7.93E-01 | 1.98E-01 | 8.95E-03 | 1.000396 |



| | | | | |
|----------|----------|----------|----------|----------|
| 8.40E-01 | 7.89E-01 | 2.02E-01 | 9.36E-03 | 1.000404 |
| 8.60E-01 | 7.85E-01 | 2.06E-01 | 9.77E-03 | 1.000411 |
| 8.80E-01 | 7.81E-01 | 2.09E-01 | 1.02E-02 | 1.000419 |
| 9.00E-01 | 7.77E-01 | 2.13E-01 | 1.06E-02 | 1.000426 |
| 9.20E-01 | 7.73E-01 | 2.17E-01 | 1.10E-02 | 1.000433 |
| 9.40E-01 | 7.69E-01 | 2.20E-01 | 1.15E-02 | 1.00044 |
| 9.60E-01 | 7.65E-01 | 2.24E-01 | 1.19E-02 | 1.000447 |
| 9.80E-01 | 7.61E-01 | 2.27E-01 | 1.24E-02 | 1.000454 |
| 1.00E+00 | 7.57E-01 | 2.31E-01 | 1.29E-02 | 1.000461 |
| 1.02E+00 | 7.53E-01 | 2.34E-01 | 1.33E-02 | 1.000468 |
| 1.04E+00 | 7.49E-01 | 2.37E-01 | 1.38E-02 | 1.000475 |
| 1.06E+00 | 7.46E-01 | 2.41E-01 | 1.43E-02 | 1.000481 |
| 1.08E+00 | 7.42E-01 | 2.44E-01 | 1.48E-02 | 1.000488 |
| 1.10E+00 | 7.38E-01 | 2.47E-01 | 1.53E-02 | 1.000494 |
| 1.12E+00 | 7.34E-01 | 2.50E-01 | 1.58E-02 | 1.000501 |
| 1.14E+00 | 7.31E-01 | 2.54E-01 | 1.63E-02 | 1.000507 |
| 1.16E+00 | 7.27E-01 | 2.57E-01 | 1.68E-02 | 1.000513 |
| 1.18E+00 | 7.24E-01 | 2.60E-01 | 1.73E-02 | 1.000519 |
| 1.20E+00 | 7.20E-01 | 2.63E-01 | 1.78E-02 | 1.000526 |
| 1.22E+00 | 7.16E-01 | 2.66E-01 | 1.84E-02 | 1.000532 |
| 1.24E+00 | 7.13E-01 | 2.69E-01 | 1.89E-02 | 1.000537 |
| 1.26E+00 | 7.09E-01 | 2.72E-01 | 1.94E-02 | 1.000543 |
| 1.28E+00 | 7.06E-01 | 2.75E-01 | 2.00E-02 | 1.000549 |
| 1.30E+00 | 7.03E-01 | 2.77E-01 | 2.05E-02 | 1.000555 |
| 1.32E+00 | 6.99E-01 | 2.80E-01 | 2.11E-02 | 1.000561 |
| 1.34E+00 | 6.96E-01 | 2.83E-01 | 2.17E-02 | 1.000566 |
| 1.36E+00 | 6.93E-01 | 2.86E-01 | 2.22E-02 | 1.000572 |
| 1.38E+00 | 6.89E-01 | 2.89E-01 | 2.28E-02 | 1.000577 |
| 1.40E+00 | 6.86E-01 | 2.91E-01 | 2.34E-02 | 1.000582 |
| 1.42E+00 | 6.83E-01 | 2.94E-01 | 2.40E-02 | 1.000588 |
| 1.44E+00 | 6.80E-01 | 2.97E-01 | 2.46E-02 | 1.000593 |
| 1.46E+00 | 6.76E-01 | 2.99E-01 | 2.52E-02 | 1.000598 |
| 1.48E+00 | 6.73E-01 | 3.02E-01 | 2.58E-02 | 1.000603 |
| 1.50E+00 | 6.70E-01 | 3.04E-01 | 2.64E-02 | 1.000608 |
| 1.52E+00 | 6.67E-01 | 3.07E-01 | 2.70E-02 | 1.000613 |
| 1.54E+00 | 6.64E-01 | 3.09E-01 | 2.76E-02 | 1.000618 |
| 1.56E+00 | 6.61E-01 | 3.12E-01 | 2.82E-02 | 1.000623 |
| 1.58E+00 | 6.58E-01 | 3.14E-01 | 2.89E-02 | 1.000628 |
| 1.60E+00 | 6.55E-01 | 3.16E-01 | 2.95E-02 | 1.000633 |
| 1.62E+00 | 6.52E-01 | 3.19E-01 | 3.01E-02 | 1.000637 |
| 1.64E+00 | 6.49E-01 | 3.21E-01 | 3.08E-02 | 1.000642 |
| 1.66E+00 | 6.46E-01 | 3.23E-01 | 3.14E-02 | 1.000647 |
| 1.68E+00 | 6.43E-01 | 3.26E-01 | 3.21E-02 | 1.000651 |
| 1.70E+00 | 6.40E-01 | 3.28E-01 | 3.27E-02 | 1.000656 |
| 1.72E+00 | 6.37E-01 | 3.30E-01 | 3.34E-02 | 1.00066 |
| 1.74E+00 | 6.34E-01 | 3.32E-01 | 3.41E-02 | 1.000664 |
| 1.76E+00 | 6.32E-01 | 3.34E-01 | 3.47E-02 | 1.000669 |
| 1.78E+00 | 6.29E-01 | 3.36E-01 | 3.54E-02 | 1.000673 |
| 1.80E+00 | 6.26E-01 | 3.39E-01 | 3.61E-02 | 1.000677 |
| 1.82E+00 | 6.23E-01 | 3.41E-01 | 3.68E-02 | 1.000681 |
| 1.84E+00 | 6.21E-01 | 3.43E-01 | 3.74E-02 | 1.000685 |
| 1.86E+00 | 6.18E-01 | 3.45E-01 | 3.81E-02 | 1.000689 |
| 1.88E+00 | 6.15E-01 | 3.47E-01 | 3.88E-02 | 1.000693 |
| 1.90E+00 | 6.13E-01 | 3.49E-01 | 3.95E-02 | 1.000697 |
| 1.92E+00 | 6.10E-01 | 3.51E-01 | 4.02E-02 | 1.000701 |
| 1.94E+00 | 6.07E-01 | 3.52E-01 | 4.09E-02 | 1.000705 |

| | | | | |
|----------|----------|----------|----------|----------|
| 1.96E+00 | 6.05E-01 | 3.54E-01 | 4.16E-02 | 1.000709 |
| 1.98E+00 | 6.02E-01 | 3.56E-01 | 4.24E-02 | 1.000712 |
| 2.00E+00 | 6.00E-01 | 3.58E-01 | 4.31E-02 | 1.000716 |
| 2.02E+00 | 5.97E-01 | 3.60E-01 | 4.38E-02 | 1.00072 |
| 2.04E+00 | 5.95E-01 | 3.62E-01 | 4.45E-02 | 1.000723 |
| 2.06E+00 | 5.92E-01 | 3.63E-01 | 4.52E-02 | 1.000727 |
| 2.08E+00 | 5.90E-01 | 3.65E-01 | 4.60E-02 | 1.00073 |
| 2.10E+00 | 5.87E-01 | 3.67E-01 | 4.67E-02 | 1.000734 |
| 2.12E+00 | 5.85E-01 | 3.69E-01 | 4.74E-02 | 1.000737 |
| 2.14E+00 | 5.82E-01 | 3.70E-01 | 4.82E-02 | 1.00074 |
| 2.16E+00 | 5.80E-01 | 3.72E-01 | 4.89E-02 | 1.000744 |
| 2.18E+00 | 5.78E-01 | 3.73E-01 | 4.97E-02 | 1.000747 |
| 2.20E+00 | 5.75E-01 | 3.75E-01 | 5.04E-02 | 1.00075 |
| 2.22E+00 | 5.73E-01 | 3.77E-01 | 5.12E-02 | 1.000753 |
| 2.24E+00 | 5.71E-01 | 3.78E-01 | 5.19E-02 | 1.000756 |
| 2.26E+00 | 5.68E-01 | 3.80E-01 | 5.27E-02 | 1.000759 |
| 2.28E+00 | 5.66E-01 | 3.81E-01 | 5.35E-02 | 1.000762 |
| 2.30E+00 | 5.64E-01 | 3.83E-01 | 5.42E-02 | 1.000765 |
| 2.32E+00 | 5.62E-01 | 3.84E-01 | 5.50E-02 | 1.000768 |
| 2.34E+00 | 5.59E-01 | 3.86E-01 | 5.58E-02 | 1.000771 |
| 2.36E+00 | 5.57E-01 | 3.87E-01 | 5.65E-02 | 1.000774 |
| 2.38E+00 | 5.55E-01 | 3.88E-01 | 5.73E-02 | 1.000777 |
| 2.40E+00 | 5.53E-01 | 3.90E-01 | 5.81E-02 | 1.00078 |
| 2.42E+00 | 5.51E-01 | 3.91E-01 | 5.89E-02 | 1.000782 |
| 2.44E+00 | 5.49E-01 | 3.93E-01 | 5.97E-02 | 1.000785 |
| 2.46E+00 | 5.46E-01 | 3.94E-01 | 6.04E-02 | 1.000788 |
| 2.48E+00 | 5.44E-01 | 3.95E-01 | 6.12E-02 | 1.00079 |
| 2.50E+00 | 5.42E-01 | 3.96E-01 | 6.20E-02 | 1.000793 |
| 2.52E+00 | 5.40E-01 | 3.98E-01 | 6.28E-02 | 1.000796 |
| 2.54E+00 | 5.38E-01 | 3.99E-01 | 6.36E-02 | 1.000798 |
| 2.56E+00 | 5.36E-01 | 4.00E-01 | 6.44E-02 | 1.0008 |
| 2.58E+00 | 5.34E-01 | 4.01E-01 | 6.52E-02 | 1.000803 |
| 2.60E+00 | 5.32E-01 | 4.03E-01 | 6.60E-02 | 1.000805 |
| 2.62E+00 | 5.30E-01 | 4.04E-01 | 6.68E-02 | 1.000808 |
| 2.64E+00 | 5.28E-01 | 4.05E-01 | 6.76E-02 | 1.00081 |
| 2.66E+00 | 5.26E-01 | 4.06E-01 | 6.85E-02 | 1.000812 |
| 2.68E+00 | 5.24E-01 | 4.07E-01 | 6.93E-02 | 1.000815 |
| 2.70E+00 | 5.22E-01 | 4.08E-01 | 7.01E-02 | 1.000817 |
| 2.72E+00 | 5.20E-01 | 4.09E-01 | 7.09E-02 | 1.000819 |
| 2.74E+00 | 5.19E-01 | 4.11E-01 | 7.17E-02 | 1.000821 |
| 2.76E+00 | 5.17E-01 | 4.12E-01 | 7.26E-02 | 1.000823 |
| 2.78E+00 | 5.15E-01 | 4.13E-01 | 7.34E-02 | 1.000825 |
| 2.80E+00 | 5.13E-01 | 4.14E-01 | 7.42E-02 | 1.000827 |
| 2.82E+00 | 5.11E-01 | 4.15E-01 | 7.50E-02 | 1.000829 |
| 2.84E+00 | 5.09E-01 | 4.16E-01 | 7.59E-02 | 1.000831 |
| 2.86E+00 | 5.07E-01 | 4.17E-01 | 7.67E-02 | 1.000833 |
| 2.88E+00 | 5.06E-01 | 4.18E-01 | 7.75E-02 | 1.000835 |
| 2.90E+00 | 5.04E-01 | 4.19E-01 | 7.84E-02 | 1.000837 |
| 2.92E+00 | 5.02E-01 | 4.19E-01 | 7.92E-02 | 1.000839 |
| 2.94E+00 | 5.00E-01 | 4.20E-01 | 8.01E-02 | 1.000841 |
| 2.96E+00 | 4.99E-01 | 4.21E-01 | 8.09E-02 | 1.000843 |
| 2.98E+00 | 4.97E-01 | 4.22E-01 | 8.17E-02 | 1.000844 |
| 3.00E+00 | 4.95E-01 | 4.23E-01 | 8.26E-02 | 1.000846 |
| 3.02E+00 | 4.93E-01 | 4.24E-01 | 8.34E-02 | 1.000848 |
| 3.04E+00 | 4.92E-01 | 4.25E-01 | 8.43E-02 | 1.00085 |
| 3.06E+00 | 4.90E-01 | 4.26E-01 | 8.51E-02 | 1.000851 |

| | | | | |
|----------|----------|----------|----------|----------|
| 3.08E+00 | 4.88E-01 | 4.26E-01 | 8.60E-02 | 1.000853 |
| 3.10E+00 | 4.87E-01 | 4.27E-01 | 8.68E-02 | 1.000854 |
| 3.12E+00 | 4.85E-01 | 4.28E-01 | 8.77E-02 | 1.000856 |
| 3.14E+00 | 4.84E-01 | 4.29E-01 | 8.86E-02 | 1.000858 |
| 3.16E+00 | 4.82E-01 | 4.30E-01 | 8.94E-02 | 1.000859 |
| 3.18E+00 | 4.80E-01 | 4.30E-01 | 9.03E-02 | 1.000861 |
| 3.20E+00 | 4.79E-01 | 4.31E-01 | 9.11E-02 | 1.000862 |
| 3.22E+00 | 4.77E-01 | 4.32E-01 | 9.20E-02 | 1.000863 |
| 3.24E+00 | 4.76E-01 | 4.32E-01 | 9.29E-02 | 1.000865 |
| 3.26E+00 | 4.74E-01 | 4.33E-01 | 9.37E-02 | 1.000866 |
| 3.28E+00 | 4.72E-01 | 4.34E-01 | 9.46E-02 | 1.000868 |
| 3.30E+00 | 4.71E-01 | 4.34E-01 | 9.55E-02 | 1.000869 |
| 3.32E+00 | 4.69E-01 | 4.35E-01 | 9.63E-02 | 1.00087 |
| 3.34E+00 | 4.68E-01 | 4.36E-01 | 9.72E-02 | 1.000871 |
| 3.36E+00 | 4.66E-01 | 4.36E-01 | 9.81E-02 | 1.000873 |
| 3.38E+00 | 4.65E-01 | 4.37E-01 | 9.90E-02 | 1.000874 |
| 3.40E+00 | 4.63E-01 | 4.38E-01 | 9.98E-02 | 1.000875 |
| 3.42E+00 | 4.62E-01 | 4.38E-01 | 1.01E-01 | 1.000876 |
| 3.44E+00 | 4.61E-01 | 4.39E-01 | 1.02E-01 | 1.000878 |
| 3.46E+00 | 4.59E-01 | 4.39E-01 | 1.02E-01 | 1.000879 |
| 3.48E+00 | 4.58E-01 | 4.40E-01 | 1.03E-01 | 1.00088 |
| 3.50E+00 | 4.56E-01 | 4.40E-01 | 1.04E-01 | 1.000881 |
| 3.52E+00 | 4.55E-01 | 4.41E-01 | 1.05E-01 | 1.000882 |
| 3.54E+00 | 4.53E-01 | 4.41E-01 | 1.06E-01 | 1.000883 |
| 3.56E+00 | 4.52E-01 | 4.42E-01 | 1.07E-01 | 1.000884 |
| 3.58E+00 | 4.51E-01 | 4.43E-01 | 1.08E-01 | 1.000885 |
| 3.60E+00 | 4.49E-01 | 4.43E-01 | 1.09E-01 | 1.000886 |
| 3.62E+00 | 4.48E-01 | 4.43E-01 | 1.10E-01 | 1.000887 |
| 3.64E+00 | 4.47E-01 | 4.44E-01 | 1.10E-01 | 1.000888 |
| 3.66E+00 | 4.45E-01 | 4.44E-01 | 1.11E-01 | 1.000889 |
| 3.68E+00 | 4.44E-01 | 4.45E-01 | 1.12E-01 | 1.00089 |
| 3.70E+00 | 4.43E-01 | 4.45E-01 | 1.13E-01 | 1.000891 |
| 3.72E+00 | 4.41E-01 | 4.46E-01 | 1.14E-01 | 1.000891 |
| 3.74E+00 | 4.40E-01 | 4.46E-01 | 1.15E-01 | 1.000892 |
| 3.76E+00 | 4.39E-01 | 4.47E-01 | 1.16E-01 | 1.000893 |
| 3.78E+00 | 4.37E-01 | 4.47E-01 | 1.17E-01 | 1.000894 |
| 3.80E+00 | 4.36E-01 | 4.47E-01 | 1.18E-01 | 1.000895 |
| 3.82E+00 | 4.35E-01 | 4.48E-01 | 1.18E-01 | 1.000895 |
| 3.84E+00 | 4.33E-01 | 4.48E-01 | 1.19E-01 | 1.000896 |
| 3.86E+00 | 4.32E-01 | 4.48E-01 | 1.20E-01 | 1.000897 |
| 3.88E+00 | 4.31E-01 | 4.49E-01 | 1.21E-01 | 1.000898 |
| 3.90E+00 | 4.30E-01 | 4.49E-01 | 1.22E-01 | 1.000898 |
| 3.92E+00 | 4.28E-01 | 4.49E-01 | 1.23E-01 | 1.000899 |
| 3.94E+00 | 4.27E-01 | 4.50E-01 | 1.24E-01 | 1.0009 |
| 3.96E+00 | 4.26E-01 | 4.50E-01 | 1.25E-01 | 1.0009 |
| 3.98E+00 | 4.25E-01 | 4.50E-01 | 1.26E-01 | 1.000901 |
| 4.00E+00 | 4.24E-01 | 4.51E-01 | 1.27E-01 | 1.000901 |
| 4.02E+00 | 4.22E-01 | 4.51E-01 | 1.27E-01 | 1.000902 |
| 4.04E+00 | 4.21E-01 | 4.51E-01 | 1.28E-01 | 1.000903 |
| 4.06E+00 | 4.20E-01 | 4.52E-01 | 1.29E-01 | 1.000903 |
| 4.08E+00 | 4.19E-01 | 4.52E-01 | 1.30E-01 | 1.000904 |
| 4.10E+00 | 4.18E-01 | 4.52E-01 | 1.31E-01 | 1.000904 |
| 4.12E+00 | 4.17E-01 | 4.52E-01 | 1.32E-01 | 1.000905 |
| 4.14E+00 | 4.15E-01 | 4.53E-01 | 1.33E-01 | 1.000905 |
| 4.16E+00 | 4.14E-01 | 4.53E-01 | 1.34E-01 | 1.000906 |
| 4.18E+00 | 4.13E-01 | 4.53E-01 | 1.35E-01 | 1.000906 |

| | | | | |
|----------|----------|----------|----------|----------|
| 4.20E+00 | 4.12E-01 | 4.53E-01 | 1.36E-01 | 1.000906 |
| 4.22E+00 | 4.11E-01 | 4.53E-01 | 1.36E-01 | 1.000907 |
| 4.24E+00 | 4.10E-01 | 4.54E-01 | 1.37E-01 | 1.000907 |
| 4.26E+00 | 4.09E-01 | 4.54E-01 | 1.38E-01 | 1.000908 |
| 4.28E+00 | 4.08E-01 | 4.54E-01 | 1.39E-01 | 1.000908 |
| 4.30E+00 | 4.07E-01 | 4.54E-01 | 1.40E-01 | 1.000908 |
| 4.32E+00 | 4.06E-01 | 4.54E-01 | 1.41E-01 | 1.000909 |
| 4.34E+00 | 4.04E-01 | 4.55E-01 | 1.42E-01 | 1.000909 |
| 4.36E+00 | 4.03E-01 | 4.55E-01 | 1.43E-01 | 1.000909 |
| 4.38E+00 | 4.02E-01 | 4.55E-01 | 1.44E-01 | 1.00091 |
| 4.40E+00 | 4.01E-01 | 4.55E-01 | 1.45E-01 | 1.00091 |
| 4.42E+00 | 4.00E-01 | 4.55E-01 | 1.46E-01 | 1.00091 |
| 4.44E+00 | 3.99E-01 | 4.55E-01 | 1.46E-01 | 1.00091 |
| 4.46E+00 | 3.98E-01 | 4.55E-01 | 1.47E-01 | 1.000911 |
| 4.48E+00 | 3.97E-01 | 4.55E-01 | 1.48E-01 | 1.000911 |
| 4.50E+00 | 3.96E-01 | 4.56E-01 | 1.49E-01 | 1.000911 |
| 4.52E+00 | 3.95E-01 | 4.56E-01 | 1.50E-01 | 1.000911 |
| 4.54E+00 | 3.94E-01 | 4.56E-01 | 1.51E-01 | 1.000911 |
| 4.56E+00 | 3.93E-01 | 4.56E-01 | 1.52E-01 | 1.000912 |
| 4.58E+00 | 3.92E-01 | 4.56E-01 | 1.53E-01 | 1.000912 |
| 4.60E+00 | 3.91E-01 | 4.56E-01 | 1.54E-01 | 1.000912 |
| 4.62E+00 | 3.90E-01 | 4.56E-01 | 1.55E-01 | 1.000912 |
| 4.64E+00 | 3.89E-01 | 4.56E-01 | 1.56E-01 | 1.000912 |
| 4.66E+00 | 3.88E-01 | 4.56E-01 | 1.57E-01 | 1.000912 |
| 4.68E+00 | 3.87E-01 | 4.56E-01 | 1.57E-01 | 1.000912 |
| 4.70E+00 | 3.86E-01 | 4.56E-01 | 1.58E-01 | 1.000913 |
| 4.72E+00 | 3.85E-01 | 4.56E-01 | 1.59E-01 | 1.000913 |
| 4.74E+00 | 3.84E-01 | 4.56E-01 | 1.60E-01 | 1.000913 |
| 4.76E+00 | 3.83E-01 | 4.56E-01 | 1.61E-01 | 1.000913 |
| 4.78E+00 | 3.83E-01 | 4.56E-01 | 1.62E-01 | 1.000913 |
| 4.80E+00 | 3.82E-01 | 4.56E-01 | 1.63E-01 | 1.000913 |
| 4.82E+00 | 3.81E-01 | 4.56E-01 | 1.64E-01 | 1.000913 |
| 4.84E+00 | 3.80E-01 | 4.56E-01 | 1.65E-01 | 1.000913 |
| 4.86E+00 | 3.79E-01 | 4.56E-01 | 1.66E-01 | 1.000913 |
| 4.88E+00 | 3.78E-01 | 4.56E-01 | 1.67E-01 | 1.000913 |
| 4.90E+00 | 3.77E-01 | 4.56E-01 | 1.67E-01 | 1.000913 |
| 4.92E+00 | 3.76E-01 | 4.56E-01 | 1.68E-01 | 1.000913 |
| 4.94E+00 | 3.75E-01 | 4.56E-01 | 1.69E-01 | 1.000913 |
| 4.96E+00 | 3.74E-01 | 4.56E-01 | 1.70E-01 | 1.000913 |
| 4.98E+00 | 3.74E-01 | 4.56E-01 | 1.71E-01 | 1.000913 |
| 5.00E+00 | 3.73E-01 | 4.56E-01 | 1.72E-01 | 1.000912 |
| 5.02E+00 | 3.72E-01 | 4.56E-01 | 1.73E-01 | 1.000912 |
| 5.04E+00 | 3.71E-01 | 4.56E-01 | 1.74E-01 | 1.000912 |
| 5.06E+00 | 3.70E-01 | 4.56E-01 | 1.75E-01 | 1.000912 |
| 5.08E+00 | 3.69E-01 | 4.56E-01 | 1.76E-01 | 1.000912 |
| 5.10E+00 | 3.68E-01 | 4.56E-01 | 1.77E-01 | 1.000912 |
| 5.12E+00 | 3.68E-01 | 4.56E-01 | 1.78E-01 | 1.000912 |
| 5.14E+00 | 3.67E-01 | 4.56E-01 | 1.78E-01 | 1.000912 |
| 5.16E+00 | 3.66E-01 | 4.56E-01 | 1.79E-01 | 1.000911 |
| 5.18E+00 | 3.65E-01 | 4.56E-01 | 1.80E-01 | 1.000911 |
| 5.20E+00 | 3.64E-01 | 4.56E-01 | 1.81E-01 | 1.000911 |
| 5.22E+00 | 3.63E-01 | 4.55E-01 | 1.82E-01 | 1.000911 |
| 5.24E+00 | 3.63E-01 | 4.55E-01 | 1.83E-01 | 1.000911 |
| 5.26E+00 | 3.62E-01 | 4.55E-01 | 1.84E-01 | 1.000911 |
| 5.28E+00 | 3.61E-01 | 4.55E-01 | 1.85E-01 | 1.00091 |
| 5.30E+00 | 3.60E-01 | 4.55E-01 | 1.86E-01 | 1.00091 |

| | | | | |
|----------|----------|----------|----------|----------|
| 5.32E+00 | 3.59E-01 | 4.55E-01 | 1.87E-01 | 1.00091 |
| 5.34E+00 | 3.59E-01 | 4.55E-01 | 1.88E-01 | 1.00091 |
| 5.36E+00 | 3.58E-01 | 4.55E-01 | 1.88E-01 | 1.000909 |
| 5.38E+00 | 3.57E-01 | 4.55E-01 | 1.89E-01 | 1.000909 |
| 5.40E+00 | 3.56E-01 | 4.54E-01 | 1.90E-01 | 1.000909 |
| 5.42E+00 | 3.55E-01 | 4.54E-01 | 1.91E-01 | 1.000909 |
| 5.44E+00 | 3.55E-01 | 4.54E-01 | 1.92E-01 | 1.000908 |
| 5.46E+00 | 3.54E-01 | 4.54E-01 | 1.93E-01 | 1.000908 |
| 5.48E+00 | 3.53E-01 | 4.54E-01 | 1.94E-01 | 1.000908 |
| 5.50E+00 | 3.52E-01 | 4.54E-01 | 1.95E-01 | 1.000907 |
| 5.52E+00 | 3.52E-01 | 4.54E-01 | 1.96E-01 | 1.000907 |
| 5.54E+00 | 3.51E-01 | 4.53E-01 | 1.97E-01 | 1.000907 |
| 5.56E+00 | 3.50E-01 | 4.53E-01 | 1.98E-01 | 1.000906 |
| 5.58E+00 | 3.49E-01 | 4.53E-01 | 1.98E-01 | 1.000906 |
| 5.60E+00 | 3.49E-01 | 4.53E-01 | 1.99E-01 | 1.000906 |
| 5.62E+00 | 3.48E-01 | 4.53E-01 | 2.00E-01 | 1.000905 |
| 5.64E+00 | 3.47E-01 | 4.53E-01 | 2.01E-01 | 1.000905 |
| 5.66E+00 | 3.46E-01 | 4.52E-01 | 2.02E-01 | 1.000905 |
| 5.68E+00 | 3.46E-01 | 4.52E-01 | 2.03E-01 | 1.000904 |
| 5.70E+00 | 3.45E-01 | 4.52E-01 | 2.04E-01 | 1.000904 |
| 5.72E+00 | 3.44E-01 | 4.52E-01 | 2.05E-01 | 1.000904 |
| 5.74E+00 | 3.44E-01 | 4.52E-01 | 2.06E-01 | 1.000903 |
| 5.76E+00 | 3.43E-01 | 4.51E-01 | 2.07E-01 | 1.000903 |
| 5.78E+00 | 3.42E-01 | 4.51E-01 | 2.07E-01 | 1.000902 |
| 5.80E+00 | 3.42E-01 | 4.51E-01 | 2.08E-01 | 1.000902 |
| 5.82E+00 | 3.41E-01 | 4.51E-01 | 2.09E-01 | 1.000902 |
| 5.84E+00 | 3.40E-01 | 4.51E-01 | 2.10E-01 | 1.000901 |
| 5.86E+00 | 3.39E-01 | 4.50E-01 | 2.11E-01 | 1.000901 |
| 5.88E+00 | 3.39E-01 | 4.50E-01 | 2.12E-01 | 1.0009 |
| 5.90E+00 | 3.38E-01 | 4.50E-01 | 2.13E-01 | 1.0009 |
| 5.92E+00 | 3.37E-01 | 4.50E-01 | 2.14E-01 | 1.000899 |
| 5.94E+00 | 3.37E-01 | 4.50E-01 | 2.15E-01 | 1.000899 |
| 5.96E+00 | 3.36E-01 | 4.49E-01 | 2.16E-01 | 1.000899 |
| 5.98E+00 | 3.35E-01 | 4.49E-01 | 2.16E-01 | 1.000898 |
| 6.00E+00 | 3.35E-01 | 4.49E-01 | 2.17E-01 | 1.000898 |
| 6.02E+00 | 3.34E-01 | 4.49E-01 | 2.18E-01 | 1.000897 |
| 6.04E+00 | 3.33E-01 | 4.48E-01 | 2.19E-01 | 1.000897 |
| 6.06E+00 | 3.33E-01 | 4.48E-01 | 2.20E-01 | 1.000896 |
| 6.08E+00 | 3.32E-01 | 4.48E-01 | 2.21E-01 | 1.000896 |
| 6.10E+00 | 3.31E-01 | 4.48E-01 | 2.22E-01 | 1.000895 |
| 6.12E+00 | 3.31E-01 | 4.47E-01 | 2.23E-01 | 1.000895 |
| 6.14E+00 | 3.30E-01 | 4.47E-01 | 2.24E-01 | 1.000894 |
| 6.16E+00 | 3.30E-01 | 4.47E-01 | 2.25E-01 | 1.000894 |
| 6.18E+00 | 3.29E-01 | 4.47E-01 | 2.25E-01 | 1.000893 |
| 6.20E+00 | 3.28E-01 | 4.46E-01 | 2.26E-01 | 1.000893 |
| 6.22E+00 | 3.28E-01 | 4.46E-01 | 2.27E-01 | 1.000892 |
| 6.24E+00 | 3.27E-01 | 4.46E-01 | 2.28E-01 | 1.000892 |
| 6.26E+00 | 3.26E-01 | 4.46E-01 | 2.29E-01 | 1.000891 |
| 6.28E+00 | 3.26E-01 | 4.45E-01 | 2.30E-01 | 1.000891 |
| 6.30E+00 | 3.25E-01 | 4.45E-01 | 2.31E-01 | 1.00089 |
| 6.32E+00 | 3.25E-01 | 4.45E-01 | 2.32E-01 | 1.000889 |
| 6.34E+00 | 3.24E-01 | 4.44E-01 | 2.33E-01 | 1.000889 |
| 6.36E+00 | 3.23E-01 | 4.44E-01 | 2.33E-01 | 1.000888 |
| 6.38E+00 | 3.23E-01 | 4.44E-01 | 2.34E-01 | 1.000888 |
| 6.40E+00 | 3.22E-01 | 4.44E-01 | 2.35E-01 | 1.000887 |
| 6.42E+00 | 3.21E-01 | 4.43E-01 | 2.36E-01 | 1.000887 |

| | | | | |
|----------|----------|----------|----------|----------|
| 6.44E+00 | 3.21E-01 | 4.43E-01 | 2.37E-01 | 1.000886 |
| 6.46E+00 | 3.20E-01 | 4.43E-01 | 2.38E-01 | 1.000886 |
| 6.48E+00 | 3.20E-01 | 4.42E-01 | 2.39E-01 | 1.000885 |
| 6.50E+00 | 3.19E-01 | 4.42E-01 | 2.40E-01 | 1.000884 |
| 6.52E+00 | 3.18E-01 | 4.42E-01 | 2.41E-01 | 1.000884 |
| 6.54E+00 | 3.18E-01 | 4.42E-01 | 2.41E-01 | 1.000883 |
| 6.56E+00 | 3.17E-01 | 4.41E-01 | 2.42E-01 | 1.000883 |
| 6.58E+00 | 3.17E-01 | 4.41E-01 | 2.43E-01 | 1.000882 |
| 6.60E+00 | 3.16E-01 | 4.41E-01 | 2.44E-01 | 1.000881 |
| 6.62E+00 | 3.16E-01 | 4.40E-01 | 2.45E-01 | 1.000881 |
| 6.64E+00 | 3.15E-01 | 4.40E-01 | 2.46E-01 | 1.00088 |
| 6.66E+00 | 3.14E-01 | 4.40E-01 | 2.47E-01 | 1.000879 |
| 6.68E+00 | 3.14E-01 | 4.39E-01 | 2.48E-01 | 1.000879 |
| 6.70E+00 | 3.13E-01 | 4.39E-01 | 2.48E-01 | 1.000878 |
| 6.72E+00 | 3.13E-01 | 4.39E-01 | 2.49E-01 | 1.000878 |
| 6.74E+00 | 3.12E-01 | 4.38E-01 | 2.50E-01 | 1.000877 |
| 6.76E+00 | 3.12E-01 | 4.38E-01 | 2.51E-01 | 1.000876 |
| 6.78E+00 | 3.11E-01 | 4.38E-01 | 2.52E-01 | 1.000876 |
| 6.80E+00 | 3.11E-01 | 4.38E-01 | 2.53E-01 | 1.000875 |
| 6.82E+00 | 3.10E-01 | 4.37E-01 | 2.54E-01 | 1.000874 |
| 6.84E+00 | 3.09E-01 | 4.37E-01 | 2.55E-01 | 1.000874 |
| 6.86E+00 | 3.09E-01 | 4.37E-01 | 2.55E-01 | 1.000873 |
| 6.88E+00 | 3.08E-01 | 4.36E-01 | 2.56E-01 | 1.000872 |
| 6.90E+00 | 3.08E-01 | 4.36E-01 | 2.57E-01 | 1.000872 |
| 6.92E+00 | 3.07E-01 | 4.36E-01 | 2.58E-01 | 1.000871 |
| 6.94E+00 | 3.07E-01 | 4.35E-01 | 2.59E-01 | 1.00087 |
| 6.96E+00 | 3.06E-01 | 4.35E-01 | 2.60E-01 | 1.00087 |
| 6.98E+00 | 3.06E-01 | 4.35E-01 | 2.61E-01 | 1.000869 |
| 7.00E+00 | 3.05E-01 | 4.34E-01 | 2.62E-01 | 1.000868 |
| 7.02E+00 | 3.05E-01 | 4.34E-01 | 2.62E-01 | 1.000868 |
| 7.04E+00 | 3.04E-01 | 4.34E-01 | 2.63E-01 | 1.000867 |
| 7.06E+00 | 3.04E-01 | 4.33E-01 | 2.64E-01 | 1.000866 |
| 7.08E+00 | 3.03E-01 | 4.33E-01 | 2.65E-01 | 1.000866 |
| 7.10E+00 | 3.03E-01 | 4.32E-01 | 2.66E-01 | 1.000865 |
| 7.12E+00 | 3.02E-01 | 4.32E-01 | 2.67E-01 | 1.000864 |
| 7.14E+00 | 3.01E-01 | 4.32E-01 | 2.68E-01 | 1.000864 |
| 7.16E+00 | 3.01E-01 | 4.31E-01 | 2.68E-01 | 1.000863 |
| 7.18E+00 | 3.00E-01 | 4.31E-01 | 2.69E-01 | 1.000862 |
| 7.20E+00 | 3.00E-01 | 4.31E-01 | 2.70E-01 | 1.000861 |
| 7.22E+00 | 2.99E-01 | 4.30E-01 | 2.71E-01 | 1.000861 |
| 7.24E+00 | 2.99E-01 | 4.30E-01 | 2.72E-01 | 1.00086 |
| 7.26E+00 | 2.98E-01 | 4.30E-01 | 2.73E-01 | 1.000859 |
| 7.28E+00 | 2.98E-01 | 4.29E-01 | 2.74E-01 | 1.000859 |
| 7.30E+00 | 2.97E-01 | 4.29E-01 | 2.74E-01 | 1.000858 |
| 7.32E+00 | 2.97E-01 | 4.29E-01 | 2.75E-01 | 1.000857 |
| 7.34E+00 | 2.96E-01 | 4.28E-01 | 2.76E-01 | 1.000856 |
| 7.36E+00 | 2.96E-01 | 4.28E-01 | 2.77E-01 | 1.000856 |
| 7.38E+00 | 2.95E-01 | 4.28E-01 | 2.78E-01 | 1.000855 |
| 7.40E+00 | 2.95E-01 | 4.27E-01 | 2.79E-01 | 1.000854 |
| 7.42E+00 | 2.94E-01 | 4.27E-01 | 2.80E-01 | 1.000854 |
| 7.44E+00 | 2.94E-01 | 4.26E-01 | 2.80E-01 | 1.000853 |
| 7.46E+00 | 2.93E-01 | 4.26E-01 | 2.81E-01 | 1.000852 |
| 7.48E+00 | 2.93E-01 | 4.26E-01 | 2.82E-01 | 1.000851 |
| 7.50E+00 | 2.93E-01 | 4.25E-01 | 2.83E-01 | 1.000851 |
| 7.52E+00 | 2.92E-01 | 4.25E-01 | 2.84E-01 | 1.00085 |
| 7.54E+00 | 2.92E-01 | 4.25E-01 | 2.85E-01 | 1.000849 |

| | | | | |
|----------|----------|----------|----------|----------|
| 7.56E+00 | 2.91E-01 | 4.24E-01 | 2.86E-01 | 1.000848 |
| 7.58E+00 | 2.91E-01 | 4.24E-01 | 2.86E-01 | 1.000848 |
| 7.60E+00 | 2.90E-01 | 4.23E-01 | 2.87E-01 | 1.000847 |
| 7.62E+00 | 2.90E-01 | 4.23E-01 | 2.88E-01 | 1.000846 |
| 7.64E+00 | 2.89E-01 | 4.23E-01 | 2.89E-01 | 1.000845 |
| 7.66E+00 | 2.89E-01 | 4.22E-01 | 2.90E-01 | 1.000845 |
| 7.68E+00 | 2.88E-01 | 4.22E-01 | 2.91E-01 | 1.000844 |
| 7.70E+00 | 2.88E-01 | 4.22E-01 | 2.91E-01 | 1.000843 |
| 7.72E+00 | 2.87E-01 | 4.21E-01 | 2.92E-01 | 1.000842 |
| 7.74E+00 | 2.87E-01 | 4.21E-01 | 2.93E-01 | 1.000842 |
| 7.76E+00 | 2.86E-01 | 4.20E-01 | 2.94E-01 | 1.000841 |
| 7.78E+00 | 2.86E-01 | 4.20E-01 | 2.95E-01 | 1.00084 |
| 7.80E+00 | 2.86E-01 | 4.20E-01 | 2.96E-01 | 1.000839 |
| 7.82E+00 | 2.85E-01 | 4.19E-01 | 2.97E-01 | 1.000838 |
| 7.84E+00 | 2.85E-01 | 4.19E-01 | 2.97E-01 | 1.000838 |
| 7.86E+00 | 2.84E-01 | 4.18E-01 | 2.98E-01 | 1.000837 |
| 7.88E+00 | 2.84E-01 | 4.18E-01 | 2.99E-01 | 1.000836 |
| 7.90E+00 | 2.83E-01 | 4.18E-01 | 3.00E-01 | 1.000835 |
| 7.92E+00 | 2.83E-01 | 4.17E-01 | 3.01E-01 | 1.000835 |
| 7.94E+00 | 2.82E-01 | 4.17E-01 | 3.02E-01 | 1.000834 |
| 7.96E+00 | 2.82E-01 | 4.17E-01 | 3.02E-01 | 1.000833 |
| 7.98E+00 | 2.81E-01 | 4.16E-01 | 3.03E-01 | 1.000832 |
| 8.00E+00 | 2.81E-01 | 4.16E-01 | 3.04E-01 | 1.000831 |
| 8.02E+00 | 2.81E-01 | 4.15E-01 | 3.05E-01 | 1.000831 |
| 8.04E+00 | 2.80E-01 | 4.15E-01 | 3.06E-01 | 1.00083 |
| 8.06E+00 | 2.80E-01 | 4.15E-01 | 3.07E-01 | 1.000829 |
| 8.08E+00 | 2.79E-01 | 4.14E-01 | 3.07E-01 | 1.000828 |
| 8.10E+00 | 2.79E-01 | 4.14E-01 | 3.08E-01 | 1.000828 |
| 8.12E+00 | 2.78E-01 | 4.13E-01 | 3.09E-01 | 1.000827 |
| 8.14E+00 | 2.78E-01 | 4.13E-01 | 3.10E-01 | 1.000826 |
| 8.16E+00 | 2.78E-01 | 4.13E-01 | 3.11E-01 | 1.000825 |
| 8.18E+00 | 2.77E-01 | 4.12E-01 | 3.11E-01 | 1.000824 |
| 8.20E+00 | 2.77E-01 | 4.12E-01 | 3.12E-01 | 1.000824 |
| 8.22E+00 | 2.76E-01 | 4.11E-01 | 3.13E-01 | 1.000823 |
| 8.24E+00 | 2.76E-01 | 4.11E-01 | 3.14E-01 | 1.000822 |
| 8.26E+00 | 2.75E-01 | 4.11E-01 | 3.15E-01 | 1.000821 |
| 8.28E+00 | 2.75E-01 | 4.10E-01 | 3.16E-01 | 1.00082 |
| 8.30E+00 | 2.75E-01 | 4.10E-01 | 3.16E-01 | 1.00082 |
| 8.32E+00 | 2.74E-01 | 4.09E-01 | 3.17E-01 | 1.000819 |
| 8.34E+00 | 2.74E-01 | 4.09E-01 | 3.18E-01 | 1.000818 |
| 8.36E+00 | 2.73E-01 | 4.09E-01 | 3.19E-01 | 1.000817 |
| 8.38E+00 | 2.73E-01 | 4.08E-01 | 3.20E-01 | 1.000816 |
| 8.40E+00 | 2.73E-01 | 4.08E-01 | 3.20E-01 | 1.000816 |
| 8.42E+00 | 2.72E-01 | 4.07E-01 | 3.21E-01 | 1.000815 |
| 8.44E+00 | 2.72E-01 | 4.07E-01 | 3.22E-01 | 1.000814 |
| 8.46E+00 | 2.71E-01 | 4.07E-01 | 3.23E-01 | 1.000813 |
| 8.48E+00 | 2.71E-01 | 4.06E-01 | 3.24E-01 | 1.000812 |
| 8.50E+00 | 2.70E-01 | 4.06E-01 | 3.25E-01 | 1.000812 |
| 8.52E+00 | 2.70E-01 | 4.05E-01 | 3.25E-01 | 1.000811 |
| 8.54E+00 | 2.70E-01 | 4.05E-01 | 3.26E-01 | 1.00081 |
| 8.56E+00 | 2.69E-01 | 4.05E-01 | 3.27E-01 | 1.000809 |
| 8.58E+00 | 2.69E-01 | 4.04E-01 | 3.28E-01 | 1.000808 |
| 8.60E+00 | 2.68E-01 | 4.04E-01 | 3.29E-01 | 1.000807 |
| 8.62E+00 | 2.68E-01 | 4.03E-01 | 3.29E-01 | 1.000807 |
| 8.64E+00 | 2.68E-01 | 4.03E-01 | 3.30E-01 | 1.000806 |
| 8.66E+00 | 2.67E-01 | 4.03E-01 | 3.31E-01 | 1.000805 |

| | | | | |
|----------|----------|----------|----------|----------|
| 8.68E+00 | 2.67E-01 | 4.02E-01 | 3.32E-01 | 1.000804 |
| 8.70E+00 | 2.66E-01 | 4.02E-01 | 3.33E-01 | 1.000803 |
| 8.72E+00 | 2.66E-01 | 4.01E-01 | 3.33E-01 | 1.000803 |
| 8.74E+00 | 2.66E-01 | 4.01E-01 | 3.34E-01 | 1.000802 |
| 8.76E+00 | 2.65E-01 | 4.00E-01 | 3.35E-01 | 1.000801 |
| 8.78E+00 | 2.65E-01 | 4.00E-01 | 3.36E-01 | 1.000800 |
| 8.80E+00 | 2.65E-01 | 4.00E-01 | 3.37E-01 | 1.000799 |
| 8.82E+00 | 2.64E-01 | 3.99E-01 | 3.37E-01 | 1.000798 |
| 8.84E+00 | 2.64E-01 | 3.99E-01 | 3.38E-01 | 1.000798 |
| 8.86E+00 | 2.63E-01 | 3.98E-01 | 3.39E-01 | 1.000797 |
| 8.88E+00 | 2.63E-01 | 3.98E-01 | 3.40E-01 | 1.000796 |
| 8.90E+00 | 2.63E-01 | 3.98E-01 | 3.41E-01 | 1.000795 |
| 8.92E+00 | 2.62E-01 | 3.97E-01 | 3.41E-01 | 1.000794 |
| 8.94E+00 | 2.62E-01 | 3.97E-01 | 3.42E-01 | 1.000794 |
| 8.96E+00 | 2.61E-01 | 3.96E-01 | 3.43E-01 | 1.000793 |
| 8.98E+00 | 2.61E-01 | 3.96E-01 | 3.44E-01 | 1.000792 |
| 9.00E+00 | 2.61E-01 | 3.96E-01 | 3.45E-01 | 1.000791 |
| 9.02E+00 | 2.60E-01 | 3.95E-01 | 3.45E-01 | 1.000790 |
| 9.04E+00 | 2.60E-01 | 3.95E-01 | 3.46E-01 | 1.000789 |
| 9.06E+00 | 2.60E-01 | 3.94E-01 | 3.47E-01 | 1.000789 |
| 9.08E+00 | 2.59E-01 | 3.94E-01 | 3.48E-01 | 1.000788 |
| 9.10E+00 | 2.59E-01 | 3.93E-01 | 3.49E-01 | 1.000787 |
| 9.12E+00 | 2.58E-01 | 3.93E-01 | 3.49E-01 | 1.000786 |
| 9.14E+00 | 2.58E-01 | 3.93E-01 | 3.50E-01 | 1.000785 |
| 9.16E+00 | 2.58E-01 | 3.92E-01 | 3.51E-01 | 1.000784 |
| 9.18E+00 | 2.57E-01 | 3.92E-01 | 3.52E-01 | 1.000784 |
| 9.20E+00 | 2.57E-01 | 3.91E-01 | 3.52E-01 | 1.000783 |
| 9.22E+00 | 2.57E-01 | 3.91E-01 | 3.53E-01 | 1.000782 |
| 9.24E+00 | 2.56E-01 | 3.91E-01 | 3.54E-01 | 1.000781 |
| 9.26E+00 | 2.56E-01 | 3.90E-01 | 3.55E-01 | 1.000780 |
| 9.28E+00 | 2.55E-01 | 3.90E-01 | 3.56E-01 | 1.000779 |
| 9.30E+00 | 2.55E-01 | 3.89E-01 | 3.56E-01 | 1.000779 |
| 9.32E+00 | 2.55E-01 | 3.89E-01 | 3.57E-01 | 1.000778 |
| 9.34E+00 | 2.54E-01 | 3.88E-01 | 3.58E-01 | 1.000777 |
| 9.36E+00 | 2.54E-01 | 3.88E-01 | 3.59E-01 | 1.000776 |
| 9.38E+00 | 2.54E-01 | 3.88E-01 | 3.59E-01 | 1.000775 |
| 9.40E+00 | 2.53E-01 | 3.87E-01 | 3.60E-01 | 1.000774 |
| 9.42E+00 | 2.53E-01 | 3.87E-01 | 3.61E-01 | 1.000774 |
| 9.44E+00 | 2.53E-01 | 3.86E-01 | 3.62E-01 | 1.000773 |
| 9.46E+00 | 2.52E-01 | 3.86E-01 | 3.63E-01 | 1.000772 |
| 9.48E+00 | 2.52E-01 | 3.86E-01 | 3.63E-01 | 1.000771 |
| 9.50E+00 | 2.52E-01 | 3.85E-01 | 3.64E-01 | 1.000770 |
| 9.52E+00 | 2.51E-01 | 3.85E-01 | 3.65E-01 | 1.000769 |
| 9.54E+00 | 2.51E-01 | 3.84E-01 | 3.66E-01 | 1.000769 |
| 9.56E+00 | 2.50E-01 | 3.84E-01 | 3.66E-01 | 1.000768 |
| 9.58E+00 | 2.50E-01 | 3.83E-01 | 3.67E-01 | 1.000767 |
| 9.60E+00 | 2.50E-01 | 3.83E-01 | 3.68E-01 | 1.000766 |
| 9.62E+00 | 2.49E-01 | 3.83E-01 | 3.69E-01 | 1.000765 |
| 9.64E+00 | 2.49E-01 | 3.82E-01 | 3.69E-01 | 1.000764 |
| 9.66E+00 | 2.49E-01 | 3.82E-01 | 3.70E-01 | 1.000764 |
| 9.68E+00 | 2.48E-01 | 3.81E-01 | 3.71E-01 | 1.000763 |
| 9.70E+00 | 2.48E-01 | 3.81E-01 | 3.72E-01 | 1.000762 |
| 9.72E+00 | 2.48E-01 | 3.81E-01 | 3.73E-01 | 1.000761 |
| 9.74E+00 | 2.47E-01 | 3.80E-01 | 3.73E-01 | 1.000760 |
| 9.76E+00 | 2.47E-01 | 3.80E-01 | 3.74E-01 | 1.000759 |
| 9.78E+00 | 2.47E-01 | 3.79E-01 | 3.75E-01 | 1.000759 |

| | | | | |
|----------|----------|----------|----------|----------|
| 9.80E+00 | 2.46E-01 | 3.79E-01 | 3.76E-01 | 1.000758 |
| 9.82E+00 | 2.46E-01 | 3.78E-01 | 3.76E-01 | 1.000757 |
| 9.84E+00 | 2.46E-01 | 3.78E-01 | 3.77E-01 | 1.000756 |
| 9.86E+00 | 2.45E-01 | 3.78E-01 | 3.78E-01 | 1.000755 |
| 9.88E+00 | 2.45E-01 | 3.77E-01 | 3.79E-01 | 1.000754 |
| 9.90E+00 | 2.45E-01 | 3.77E-01 | 3.79E-01 | 1.000754 |
| 9.92E+00 | 2.44E-01 | 3.76E-01 | 3.80E-01 | 1.000753 |
| 9.94E+00 | 2.44E-01 | 3.76E-01 | 3.81E-01 | 1.000752 |
| 9.96E+00 | 2.44E-01 | 3.76E-01 | 3.82E-01 | 1.000751 |
| 9.98E+00 | 2.43E-01 | 3.75E-01 | 3.82E-01 | 1.00075 |
| 1.00E+01 | 2.43E-01 | 3.75E-01 | 3.83E-01 | 1.000749 |
| 1.00E+01 | 2.43E-01 | 3.74E-01 | 3.84E-01 | 1.000749 |
| 1.00E+01 | 2.42E-01 | 3.74E-01 | 3.85E-01 | 1.000748 |
| 1.01E+01 | 2.42E-01 | 3.73E-01 | 3.85E-01 | 1.000747 |
| 1.01E+01 | 2.42E-01 | 3.73E-01 | 3.86E-01 | 1.000746 |
| 1.01E+01 | 2.41E-01 | 3.73E-01 | 3.87E-01 | 1.000745 |
| 1.01E+01 | 2.41E-01 | 3.72E-01 | 3.88E-01 | 1.000744 |
| 1.01E+01 | 2.41E-01 | 3.72E-01 | 3.88E-01 | 1.000744 |
| 1.02E+01 | 2.40E-01 | 3.71E-01 | 3.89E-01 | 1.000743 |
| 1.02E+01 | 2.40E-01 | 3.71E-01 | 3.90E-01 | 1.000742 |
| 1.02E+01 | 2.40E-01 | 3.71E-01 | 3.91E-01 | 1.000741 |
| 1.02E+01 | 2.39E-01 | 3.70E-01 | 3.91E-01 | 1.00074 |
| 1.02E+01 | 2.39E-01 | 3.70E-01 | 3.92E-01 | 1.000739 |
| 1.03E+01 | 2.39E-01 | 3.69E-01 | 3.93E-01 | 1.000739 |
| 1.03E+01 | 2.38E-01 | 3.69E-01 | 3.93E-01 | 1.000738 |
| 1.03E+01 | 2.38E-01 | 3.68E-01 | 3.94E-01 | 1.000737 |
| 1.03E+01 | 2.38E-01 | 3.68E-01 | 3.95E-01 | 1.000736 |
| 1.03E+01 | 2.37E-01 | 3.68E-01 | 3.96E-01 | 1.000735 |
| 1.04E+01 | 2.37E-01 | 3.67E-01 | 3.96E-01 | 1.000735 |
| 1.04E+01 | 2.37E-01 | 3.67E-01 | 3.97E-01 | 1.000734 |
| 1.04E+01 | 2.36E-01 | 3.66E-01 | 3.98E-01 | 1.000733 |
| 1.04E+01 | 2.36E-01 | 3.66E-01 | 3.99E-01 | 1.000732 |
| 1.04E+01 | 2.36E-01 | 3.66E-01 | 3.99E-01 | 1.000731 |
| 1.05E+01 | 2.35E-01 | 3.65E-01 | 4.00E-01 | 1.00073 |
| 1.05E+01 | 2.35E-01 | 3.65E-01 | 4.01E-01 | 1.00073 |
| 1.05E+01 | 2.35E-01 | 3.64E-01 | 4.02E-01 | 1.000729 |
| 1.05E+01 | 2.35E-01 | 3.64E-01 | 4.02E-01 | 1.000728 |
| 1.05E+01 | 2.34E-01 | 3.64E-01 | 4.03E-01 | 1.000727 |
| 1.06E+01 | 2.34E-01 | 3.63E-01 | 4.04E-01 | 1.000726 |
| 1.06E+01 | 2.34E-01 | 3.63E-01 | 4.04E-01 | 1.000725 |
| 1.06E+01 | 2.33E-01 | 3.62E-01 | 4.05E-01 | 1.000725 |
| 1.06E+01 | 2.33E-01 | 3.62E-01 | 4.06E-01 | 1.000724 |
| 1.06E+01 | 2.33E-01 | 3.61E-01 | 4.07E-01 | 1.000723 |
| 1.07E+01 | 2.32E-01 | 3.61E-01 | 4.07E-01 | 1.000722 |
| 1.07E+01 | 2.32E-01 | 3.61E-01 | 4.08E-01 | 1.000721 |
| 1.07E+01 | 2.32E-01 | 3.60E-01 | 4.09E-01 | 1.00072 |
| 1.07E+01 | 2.31E-01 | 3.60E-01 | 4.10E-01 | 1.00072 |
| 1.07E+01 | 2.31E-01 | 3.59E-01 | 4.10E-01 | 1.000719 |
| 1.08E+01 | 2.31E-01 | 3.59E-01 | 4.11E-01 | 1.000718 |
| 1.08E+01 | 2.30E-01 | 3.59E-01 | 4.12E-01 | 1.000717 |
| 1.08E+01 | 2.30E-01 | 3.58E-01 | 4.12E-01 | 1.000716 |
| 1.08E+01 | 2.30E-01 | 3.58E-01 | 4.13E-01 | 1.000716 |
| 1.08E+01 | 2.30E-01 | 3.57E-01 | 4.14E-01 | 1.000715 |
| 1.09E+01 | 2.29E-01 | 3.57E-01 | 4.15E-01 | 1.000714 |
| 1.09E+01 | 2.29E-01 | 3.57E-01 | 4.15E-01 | 1.000713 |
| 1.09E+01 | 2.29E-01 | 3.56E-01 | 4.16E-01 | 1.000712 |

| | | | | |
|----------|----------|----------|----------|----------|
| 1.09E+01 | 2.28E-01 | 3.56E-01 | 4.17E-01 | 1.000711 |
| 1.09E+01 | 2.28E-01 | 3.55E-01 | 4.17E-01 | 1.000711 |
| 1.10E+01 | 2.28E-01 | 3.55E-01 | 4.18E-01 | 1.00071 |
| 1.10E+01 | 2.27E-01 | 3.55E-01 | 4.19E-01 | 1.000709 |
| 1.10E+01 | 2.27E-01 | 3.54E-01 | 4.19E-01 | 1.000708 |
| 1.10E+01 | 2.27E-01 | 3.54E-01 | 4.20E-01 | 1.000707 |
| 1.10E+01 | 2.27E-01 | 3.53E-01 | 4.21E-01 | 1.000707 |
| 1.11E+01 | 2.26E-01 | 3.53E-01 | 4.22E-01 | 1.000706 |
| 1.11E+01 | 2.26E-01 | 3.52E-01 | 4.22E-01 | 1.000705 |
| 1.11E+01 | 2.26E-01 | 3.52E-01 | 4.23E-01 | 1.000704 |
| 1.11E+01 | 2.25E-01 | 3.52E-01 | 4.24E-01 | 1.000703 |
| 1.11E+01 | 2.25E-01 | 3.51E-01 | 4.24E-01 | 1.000702 |
| 1.12E+01 | 2.25E-01 | 3.51E-01 | 4.25E-01 | 1.000702 |
| 1.12E+01 | 2.24E-01 | 3.50E-01 | 4.26E-01 | 1.000701 |
| 1.12E+01 | 2.24E-01 | 3.50E-01 | 4.27E-01 | 1.0007 |
| 1.12E+01 | 2.24E-01 | 3.50E-01 | 4.27E-01 | 1.000699 |
| 1.12E+01 | 2.24E-01 | 3.49E-01 | 4.28E-01 | 1.000698 |
| 1.13E+01 | 2.23E-01 | 3.49E-01 | 4.29E-01 | 1.000698 |
| 1.13E+01 | 2.23E-01 | 3.48E-01 | 4.29E-01 | 1.000697 |
| 1.13E+01 | 2.23E-01 | 3.48E-01 | 4.30E-01 | 1.000696 |
| 1.13E+01 | 2.22E-01 | 3.48E-01 | 4.31E-01 | 1.000695 |
| 1.13E+01 | 2.22E-01 | 3.47E-01 | 4.31E-01 | 1.000694 |
| 1.14E+01 | 2.22E-01 | 3.47E-01 | 4.32E-01 | 1.000694 |
| 1.14E+01 | 2.22E-01 | 3.46E-01 | 4.33E-01 | 1.000693 |
| 1.14E+01 | 2.21E-01 | 3.46E-01 | 4.33E-01 | 1.000692 |
| 1.14E+01 | 2.21E-01 | 3.46E-01 | 4.34E-01 | 1.000691 |
| 1.14E+01 | 2.21E-01 | 3.45E-01 | 4.35E-01 | 1.00069 |
| 1.15E+01 | 2.20E-01 | 3.45E-01 | 4.36E-01 | 1.00069 |
| 1.15E+01 | 2.20E-01 | 3.44E-01 | 4.36E-01 | 1.000689 |
| 1.15E+01 | 2.20E-01 | 3.44E-01 | 4.37E-01 | 1.000688 |
| 1.15E+01 | 2.19E-01 | 3.44E-01 | 4.38E-01 | 1.000687 |
| 1.15E+01 | 2.19E-01 | 3.43E-01 | 4.38E-01 | 1.000686 |
| 1.16E+01 | 2.19E-01 | 3.43E-01 | 4.39E-01 | 1.000686 |
| 1.16E+01 | 2.19E-01 | 3.42E-01 | 4.40E-01 | 1.000685 |
| 1.16E+01 | 2.18E-01 | 3.42E-01 | 4.40E-01 | 1.000684 |
| 1.16E+01 | 2.18E-01 | 3.42E-01 | 4.41E-01 | 1.000683 |
| 1.16E+01 | 2.18E-01 | 3.41E-01 | 4.42E-01 | 1.000682 |
| 1.17E+01 | 2.17E-01 | 3.41E-01 | 4.42E-01 | 1.000682 |
| 1.17E+01 | 2.17E-01 | 3.40E-01 | 4.43E-01 | 1.000681 |
| 1.17E+01 | 2.17E-01 | 3.40E-01 | 4.44E-01 | 1.00068 |
| 1.17E+01 | 2.17E-01 | 3.40E-01 | 4.44E-01 | 1.000679 |
| 1.17E+01 | 2.16E-01 | 3.39E-01 | 4.45E-01 | 1.000678 |
| 1.18E+01 | 2.16E-01 | 3.39E-01 | 4.46E-01 | 1.000678 |
| 1.18E+01 | 2.16E-01 | 3.38E-01 | 4.46E-01 | 1.000677 |
| 1.18E+01 | 2.16E-01 | 3.38E-01 | 4.47E-01 | 1.000676 |
| 1.18E+01 | 2.15E-01 | 3.38E-01 | 4.48E-01 | 1.000675 |
| 1.18E+01 | 2.15E-01 | 3.37E-01 | 4.49E-01 | 1.000674 |
| 1.19E+01 | 2.15E-01 | 3.37E-01 | 4.49E-01 | 1.000674 |
| 1.19E+01 | 2.14E-01 | 3.36E-01 | 4.50E-01 | 1.000673 |
| 1.19E+01 | 2.14E-01 | 3.36E-01 | 4.51E-01 | 1.000672 |
| 1.19E+01 | 2.14E-01 | 3.36E-01 | 4.51E-01 | 1.000671 |
| 1.19E+01 | 2.14E-01 | 3.35E-01 | 4.52E-01 | 1.00067 |
| 1.20E+01 | 2.13E-01 | 3.35E-01 | 4.53E-01 | 1.00067 |
| 1.20E+01 | 2.13E-01 | 3.34E-01 | 4.53E-01 | 1.000669 |
| 1.20E+01 | 2.13E-01 | 3.34E-01 | 4.54E-01 | 1.000668 |
| 1.20E+01 | 2.12E-01 | 3.34E-01 | 4.55E-01 | 1.000667 |

| | | | | |
|----------|----------|----------|----------|----------|
| 1.20E+01 | 2.12E-01 | 3.33E-01 | 4.55E-01 | 1.000666 |
| 1.21E+01 | 2.12E-01 | 3.33E-01 | 4.56E-01 | 1.000666 |
| 1.21E+01 | 2.12E-01 | 3.32E-01 | 4.57E-01 | 1.000665 |
| 1.21E+01 | 2.11E-01 | 3.32E-01 | 4.57E-01 | 1.000664 |
| 1.21E+01 | 2.11E-01 | 3.32E-01 | 4.58E-01 | 1.000663 |
| 1.21E+01 | 2.11E-01 | 3.31E-01 | 4.59E-01 | 1.000663 |
| 1.22E+01 | 2.11E-01 | 3.31E-01 | 4.59E-01 | 1.000662 |
| 1.22E+01 | 2.10E-01 | 3.31E-01 | 4.60E-01 | 1.000661 |
| 1.22E+01 | 2.10E-01 | 3.30E-01 | 4.61E-01 | 1.00066 |
| 1.22E+01 | 2.10E-01 | 3.30E-01 | 4.61E-01 | 1.000659 |
| 1.22E+01 | 2.09E-01 | 3.29E-01 | 4.62E-01 | 1.000659 |
| 1.23E+01 | 2.09E-01 | 3.29E-01 | 4.62E-01 | 1.000658 |
| 1.23E+01 | 2.09E-01 | 3.29E-01 | 4.63E-01 | 1.000657 |
| 1.23E+01 | 2.09E-01 | 3.28E-01 | 4.64E-01 | 1.000656 |
| 1.23E+01 | 2.08E-01 | 3.28E-01 | 4.64E-01 | 1.000656 |
| 1.23E+01 | 2.08E-01 | 3.27E-01 | 4.65E-01 | 1.000655 |
| 1.24E+01 | 2.08E-01 | 3.27E-01 | 4.66E-01 | 1.000654 |
| 1.24E+01 | 2.08E-01 | 3.27E-01 | 4.66E-01 | 1.000653 |
| 1.24E+01 | 2.07E-01 | 3.26E-01 | 4.67E-01 | 1.000652 |
| 1.24E+01 | 2.07E-01 | 3.26E-01 | 4.68E-01 | 1.000652 |
| 1.24E+01 | 2.07E-01 | 3.25E-01 | 4.68E-01 | 1.000651 |
| 1.25E+01 | 2.07E-01 | 3.25E-01 | 4.69E-01 | 1.00065 |
| 1.25E+01 | 2.06E-01 | 3.25E-01 | 4.70E-01 | 1.000649 |
| 1.25E+01 | 2.06E-01 | 3.24E-01 | 4.70E-01 | 1.000649 |
| 1.25E+01 | 2.06E-01 | 3.24E-01 | 4.71E-01 | 1.000648 |
| 1.25E+01 | 2.06E-01 | 3.24E-01 | 4.72E-01 | 1.000647 |
| 1.26E+01 | 2.05E-01 | 3.23E-01 | 4.72E-01 | 1.000646 |
| 1.26E+01 | 2.05E-01 | 3.23E-01 | 4.73E-01 | 1.000646 |
| 1.26E+01 | 2.05E-01 | 3.22E-01 | 4.74E-01 | 1.000645 |
| 1.26E+01 | 2.04E-01 | 3.22E-01 | 4.74E-01 | 1.000644 |
| 1.26E+01 | 2.04E-01 | 3.22E-01 | 4.75E-01 | 1.000643 |
| 1.27E+01 | 2.04E-01 | 3.21E-01 | 4.75E-01 | 1.000642 |
| 1.27E+01 | 2.04E-01 | 3.21E-01 | 4.76E-01 | 1.000642 |
| 1.27E+01 | 2.03E-01 | 3.20E-01 | 4.77E-01 | 1.000641 |
| 1.27E+01 | 2.03E-01 | 3.20E-01 | 4.77E-01 | 1.00064 |
| 1.27E+01 | 2.03E-01 | 3.20E-01 | 4.78E-01 | 1.000639 |
| 1.28E+01 | 2.03E-01 | 3.19E-01 | 4.79E-01 | 1.000639 |
| 1.28E+01 | 2.02E-01 | 3.19E-01 | 4.79E-01 | 1.000638 |
| 1.28E+01 | 2.02E-01 | 3.19E-01 | 4.80E-01 | 1.000637 |
| 1.28E+01 | 2.02E-01 | 3.18E-01 | 4.81E-01 | 1.000636 |
| 1.28E+01 | 2.02E-01 | 3.18E-01 | 4.81E-01 | 1.000636 |
| 1.29E+01 | 2.01E-01 | 3.17E-01 | 4.82E-01 | 1.000635 |
| 1.29E+01 | 2.01E-01 | 3.17E-01 | 4.83E-01 | 1.000634 |
| 1.29E+01 | 2.01E-01 | 3.17E-01 | 4.83E-01 | 1.000633 |
| 1.29E+01 | 2.01E-01 | 3.16E-01 | 4.84E-01 | 1.000633 |
| 1.29E+01 | 2.00E-01 | 3.16E-01 | 4.84E-01 | 1.000632 |
| 1.30E+01 | 2.00E-01 | 3.16E-01 | 4.85E-01 | 1.000631 |
| 1.30E+01 | 2.00E-01 | 3.15E-01 | 4.86E-01 | 1.00063 |
| 1.30E+01 | 2.00E-01 | 3.15E-01 | 4.86E-01 | 1.00063 |
| 1.30E+01 | 1.99E-01 | 3.14E-01 | 4.87E-01 | 1.000629 |
| 1.30E+01 | 1.99E-01 | 3.14E-01 | 4.88E-01 | 1.000628 |
| 1.31E+01 | 1.99E-01 | 3.14E-01 | 4.88E-01 | 1.000627 |
| 1.31E+01 | 1.99E-01 | 3.13E-01 | 4.89E-01 | 1.000627 |
| 1.31E+01 | 1.98E-01 | 3.13E-01 | 4.89E-01 | 1.000626 |
| 1.31E+01 | 1.98E-01 | 3.13E-01 | 4.90E-01 | 1.000625 |
| 1.31E+01 | 1.98E-01 | 3.12E-01 | 4.91E-01 | 1.000624 |

| | | | | |
|----------|----------|----------|----------|----------|
| 1.32E+01 | 1.98E-01 | 3.12E-01 | 4.91E-01 | 1.000624 |
| 1.32E+01 | 1.97E-01 | 3.11E-01 | 4.92E-01 | 1.000623 |
| 1.32E+01 | 1.97E-01 | 3.11E-01 | 4.93E-01 | 1.000622 |
| 1.32E+01 | 1.97E-01 | 3.11E-01 | 4.93E-01 | 1.000621 |
| 1.32E+01 | 1.97E-01 | 3.10E-01 | 4.94E-01 | 1.000621 |
| 1.33E+01 | 1.96E-01 | 3.10E-01 | 4.94E-01 | 1.00062 |
| 1.33E+01 | 1.96E-01 | 3.10E-01 | 4.95E-01 | 1.000619 |
| 1.33E+01 | 1.96E-01 | 3.09E-01 | 4.96E-01 | 1.000618 |
| 1.33E+01 | 1.96E-01 | 3.09E-01 | 4.96E-01 | 1.000618 |
| 1.33E+01 | 1.95E-01 | 3.08E-01 | 4.97E-01 | 1.000617 |
| 1.34E+01 | 1.95E-01 | 3.08E-01 | 4.97E-01 | 1.000616 |
| 1.34E+01 | 1.95E-01 | 3.08E-01 | 4.98E-01 | 1.000615 |
| 1.34E+01 | 1.95E-01 | 3.07E-01 | 4.99E-01 | 1.000615 |
| 1.34E+01 | 1.94E-01 | 3.07E-01 | 4.99E-01 | 1.000614 |
| 1.34E+01 | 1.94E-01 | 3.07E-01 | 5.00E-01 | 1.000613 |
| 1.35E+01 | 1.94E-01 | 3.06E-01 | 5.01E-01 | 1.000612 |
| 1.35E+01 | 1.94E-01 | 3.06E-01 | 5.01E-01 | 1.000612 |
| 1.35E+01 | 1.93E-01 | 3.05E-01 | 5.02E-01 | 1.000611 |
| 1.35E+01 | 1.93E-01 | 3.05E-01 | 5.02E-01 | 1.00061 |
| 1.35E+01 | 1.93E-01 | 3.05E-01 | 5.03E-01 | 1.000609 |
| 1.36E+01 | 1.93E-01 | 3.04E-01 | 5.04E-01 | 1.000609 |
| 1.36E+01 | 1.92E-01 | 3.04E-01 | 5.04E-01 | 1.000608 |
| 1.36E+01 | 1.92E-01 | 3.04E-01 | 5.05E-01 | 1.000607 |
| 1.36E+01 | 1.92E-01 | 3.03E-01 | 5.05E-01 | 1.000607 |
| 1.36E+01 | 1.92E-01 | 3.03E-01 | 5.06E-01 | 1.000606 |
| 1.37E+01 | 1.91E-01 | 3.03E-01 | 5.07E-01 | 1.000605 |
| 1.37E+01 | 1.91E-01 | 3.02E-01 | 5.07E-01 | 1.000604 |
| 1.37E+01 | 1.91E-01 | 3.02E-01 | 5.08E-01 | 1.000604 |
| 1.37E+01 | 1.91E-01 | 3.01E-01 | 5.08E-01 | 1.000603 |
| 1.37E+01 | 1.90E-01 | 3.01E-01 | 5.09E-01 | 1.000602 |
| 1.38E+01 | 1.90E-01 | 3.01E-01 | 5.10E-01 | 1.000601 |
| 1.38E+01 | 1.90E-01 | 3.00E-01 | 5.10E-01 | 1.000601 |
| 1.38E+01 | 1.90E-01 | 3.00E-01 | 5.11E-01 | 1.0006 |
| 1.38E+01 | 1.90E-01 | 3.00E-01 | 5.11E-01 | 1.000599 |
| 1.38E+01 | 1.89E-01 | 2.99E-01 | 5.12E-01 | 1.000599 |
| 1.39E+01 | 1.89E-01 | 2.99E-01 | 5.13E-01 | 1.000598 |
| 1.39E+01 | 1.89E-01 | 2.99E-01 | 5.13E-01 | 1.000597 |
| 1.39E+01 | 1.89E-01 | 2.98E-01 | 5.14E-01 | 1.000596 |
| 1.39E+01 | 1.88E-01 | 2.98E-01 | 5.14E-01 | 1.000596 |
| 1.39E+01 | 1.88E-01 | 2.97E-01 | 5.15E-01 | 1.000595 |
| 1.40E+01 | 1.88E-01 | 2.97E-01 | 5.16E-01 | 1.000594 |
| 1.40E+01 | 1.88E-01 | 2.97E-01 | 5.16E-01 | 1.000594 |
| 1.40E+01 | 1.87E-01 | 2.96E-01 | 5.17E-01 | 1.000593 |
| 1.40E+01 | 1.87E-01 | 2.96E-01 | 5.17E-01 | 1.000592 |
| 1.40E+01 | 1.87E-01 | 2.96E-01 | 5.18E-01 | 1.000591 |
| 1.41E+01 | 1.87E-01 | 2.95E-01 | 5.19E-01 | 1.000591 |
| 1.41E+01 | 1.86E-01 | 2.95E-01 | 5.19E-01 | 1.00059 |
| 1.41E+01 | 1.86E-01 | 2.95E-01 | 5.20E-01 | 1.000589 |
| 1.41E+01 | 1.86E-01 | 2.94E-01 | 5.20E-01 | 1.000589 |
| 1.41E+01 | 1.86E-01 | 2.94E-01 | 5.21E-01 | 1.000588 |
| 1.42E+01 | 1.86E-01 | 2.94E-01 | 5.22E-01 | 1.000587 |
| 1.42E+01 | 1.85E-01 | 2.93E-01 | 5.22E-01 | 1.000586 |
| 1.42E+01 | 1.85E-01 | 2.93E-01 | 5.23E-01 | 1.000586 |
| 1.42E+01 | 1.85E-01 | 2.92E-01 | 5.23E-01 | 1.000585 |
| 1.42E+01 | 1.85E-01 | 2.92E-01 | 5.24E-01 | 1.000584 |
| 1.43E+01 | 1.84E-01 | 2.92E-01 | 5.24E-01 | 1.000584 |

| | | | | |
|----------|----------|----------|----------|----------|
| 1.43E+01 | 1.84E-01 | 2.91E-01 | 5.25E-01 | 1.000583 |
| 1.43E+01 | 1.84E-01 | 2.91E-01 | 5.26E-01 | 1.000582 |
| 1.43E+01 | 1.84E-01 | 2.91E-01 | 5.26E-01 | 1.000581 |
| 1.43E+01 | 1.83E-01 | 2.90E-01 | 5.27E-01 | 1.000581 |
| 1.44E+01 | 1.83E-01 | 2.90E-01 | 5.27E-01 | 1.00058 |
| 1.44E+01 | 1.83E-01 | 2.90E-01 | 5.28E-01 | 1.000579 |
| 1.44E+01 | 1.83E-01 | 2.89E-01 | 5.29E-01 | 1.000579 |
| 1.44E+01 | 1.83E-01 | 2.89E-01 | 5.29E-01 | 1.000578 |
| 1.44E+01 | 1.82E-01 | 2.89E-01 | 5.30E-01 | 1.000577 |
| 1.45E+01 | 1.82E-01 | 2.88E-01 | 5.30E-01 | 1.000577 |
| 1.45E+01 | 1.82E-01 | 2.88E-01 | 5.31E-01 | 1.000576 |
| 1.45E+01 | 1.82E-01 | 2.88E-01 | 5.31E-01 | 1.000575 |
| 1.45E+01 | 1.81E-01 | 2.87E-01 | 5.32E-01 | 1.000574 |
| 1.45E+01 | 1.81E-01 | 2.87E-01 | 5.33E-01 | 1.000574 |
| 1.46E+01 | 1.81E-01 | 2.87E-01 | 5.33E-01 | 1.000573 |
| 1.46E+01 | 1.81E-01 | 2.86E-01 | 5.34E-01 | 1.000572 |
| 1.46E+01 | 1.80E-01 | 2.86E-01 | 5.34E-01 | 1.000572 |
| 1.46E+01 | 1.80E-01 | 2.85E-01 | 5.35E-01 | 1.000571 |
| 1.46E+01 | 1.80E-01 | 2.85E-01 | 5.35E-01 | 1.00057 |
| 1.47E+01 | 1.80E-01 | 2.85E-01 | 5.36E-01 | 1.00057 |
| 1.47E+01 | 1.80E-01 | 2.84E-01 | 5.37E-01 | 1.000569 |
| 1.47E+01 | 1.79E-01 | 2.84E-01 | 5.37E-01 | 1.000568 |
| 1.47E+01 | 1.79E-01 | 2.84E-01 | 5.38E-01 | 1.000568 |
| 1.47E+01 | 1.79E-01 | 2.83E-01 | 5.38E-01 | 1.000567 |
| 1.48E+01 | 1.79E-01 | 2.83E-01 | 5.39E-01 | 1.000566 |
| 1.48E+01 | 1.78E-01 | 2.83E-01 | 5.39E-01 | 1.000565 |
| 1.48E+01 | 1.78E-01 | 2.82E-01 | 5.40E-01 | 1.000565 |
| 1.48E+01 | 1.78E-01 | 2.82E-01 | 5.41E-01 | 1.000564 |
| 1.48E+01 | 1.78E-01 | 2.82E-01 | 5.41E-01 | 1.000563 |
| 1.49E+01 | 1.78E-01 | 2.81E-01 | 5.42E-01 | 1.000563 |
| 1.49E+01 | 1.77E-01 | 2.81E-01 | 5.42E-01 | 1.000562 |
| 1.49E+01 | 1.77E-01 | 2.81E-01 | 5.43E-01 | 1.000561 |
| 1.49E+01 | 1.77E-01 | 2.80E-01 | 5.43E-01 | 1.000561 |
| 1.49E+01 | 1.77E-01 | 2.80E-01 | 5.44E-01 | 1.00056 |
| 1.50E+01 | 1.76E-01 | 2.80E-01 | 5.44E-01 | 1.000559 |
| 1.50E+01 | 1.76E-01 | 2.79E-01 | 5.45E-01 | 1.000559 |
| 1.50E+01 | 1.76E-01 | 2.79E-01 | 5.46E-01 | 1.000558 |
| 1.50E+01 | 1.76E-01 | 2.79E-01 | 5.46E-01 | 1.000557 |
| 1.50E+01 | 1.76E-01 | 2.78E-01 | 5.47E-01 | 1.000557 |
| 1.51E+01 | 1.75E-01 | 2.78E-01 | 5.47E-01 | 1.000556 |
| 1.51E+01 | 1.75E-01 | 2.78E-01 | 5.48E-01 | 1.000555 |
| 1.51E+01 | 1.75E-01 | 2.77E-01 | 5.48E-01 | 1.000555 |
| 1.51E+01 | 1.75E-01 | 2.77E-01 | 5.49E-01 | 1.000554 |
| 1.51E+01 | 1.74E-01 | 2.77E-01 | 5.49E-01 | 1.000553 |
| 1.52E+01 | 1.74E-01 | 2.76E-01 | 5.50E-01 | 1.000553 |
| 1.52E+01 | 1.74E-01 | 2.76E-01 | 5.51E-01 | 1.000552 |
| 1.52E+01 | 1.74E-01 | 2.76E-01 | 5.51E-01 | 1.000551 |
| 1.52E+01 | 1.74E-01 | 2.75E-01 | 5.52E-01 | 1.000551 |
| 1.52E+01 | 1.73E-01 | 2.75E-01 | 5.52E-01 | 1.00055 |
| 1.53E+01 | 1.73E-01 | 2.75E-01 | 5.53E-01 | 1.000549 |
| 1.53E+01 | 1.73E-01 | 2.74E-01 | 5.53E-01 | 1.000549 |
| 1.53E+01 | 1.73E-01 | 2.74E-01 | 5.54E-01 | 1.000548 |
| 1.53E+01 | 1.73E-01 | 2.74E-01 | 5.54E-01 | 1.000547 |
| 1.53E+01 | 1.72E-01 | 2.73E-01 | 5.55E-01 | 1.000547 |
| 1.54E+01 | 1.72E-01 | 2.73E-01 | 5.55E-01 | 1.000546 |
| 1.54E+01 | 1.72E-01 | 2.73E-01 | 5.56E-01 | 1.000545 |

| | | | | |
|----------|----------|----------|----------|----------|
| 1.54E+01 | 1.72E-01 | 2.72E-01 | 5.57E-01 | 1.000545 |
| 1.54E+01 | 1.71E-01 | 2.72E-01 | 5.57E-01 | 1.000544 |
| 1.54E+01 | 1.71E-01 | 2.72E-01 | 5.58E-01 | 1.000543 |
| 1.55E+01 | 1.71E-01 | 2.71E-01 | 5.58E-01 | 1.000543 |
| 1.55E+01 | 1.71E-01 | 2.71E-01 | 5.59E-01 | 1.000542 |
| 1.55E+01 | 1.71E-01 | 2.71E-01 | 5.59E-01 | 1.000541 |
| 1.55E+01 | 1.70E-01 | 2.70E-01 | 5.60E-01 | 1.000541 |
| 1.55E+01 | 1.70E-01 | 2.70E-01 | 5.60E-01 | 1.00054 |
| 1.56E+01 | 1.70E-01 | 2.70E-01 | 5.61E-01 | 1.000539 |
| 1.56E+01 | 1.70E-01 | 2.69E-01 | 5.61E-01 | 1.000539 |
| 1.56E+01 | 1.70E-01 | 2.69E-01 | 5.62E-01 | 1.000538 |
| 1.56E+01 | 1.69E-01 | 2.69E-01 | 5.63E-01 | 1.000537 |
| 1.56E+01 | 1.69E-01 | 2.68E-01 | 5.63E-01 | 1.000537 |
| 1.57E+01 | 1.69E-01 | 2.68E-01 | 5.64E-01 | 1.000536 |
| 1.57E+01 | 1.69E-01 | 2.68E-01 | 5.64E-01 | 1.000535 |
| 1.57E+01 | 1.69E-01 | 2.67E-01 | 5.65E-01 | 1.000535 |
| 1.57E+01 | 1.68E-01 | 2.67E-01 | 5.65E-01 | 1.000534 |
| 1.57E+01 | 1.68E-01 | 2.67E-01 | 5.66E-01 | 1.000533 |
| 1.58E+01 | 1.68E-01 | 2.66E-01 | 5.66E-01 | 1.000533 |
| 1.58E+01 | 1.68E-01 | 2.66E-01 | 5.67E-01 | 1.000532 |
| 1.58E+01 | 1.67E-01 | 2.66E-01 | 5.67E-01 | 1.000531 |
| 1.58E+01 | 1.67E-01 | 2.65E-01 | 5.68E-01 | 1.000531 |
| 1.58E+01 | 1.67E-01 | 2.65E-01 | 5.68E-01 | 1.00053 |
| 1.59E+01 | 1.67E-01 | 2.65E-01 | 5.69E-01 | 1.000529 |
| 1.59E+01 | 1.67E-01 | 2.64E-01 | 5.69E-01 | 1.000529 |
| 1.59E+01 | 1.66E-01 | 2.64E-01 | 5.70E-01 | 1.000528 |
| 1.59E+01 | 1.66E-01 | 2.64E-01 | 5.71E-01 | 1.000528 |
| 1.59E+01 | 1.66E-01 | 2.63E-01 | 5.71E-01 | 1.000527 |
| 1.60E+01 | 1.66E-01 | 2.63E-01 | 5.72E-01 | 1.000526 |
| 1.60E+01 | 1.66E-01 | 2.63E-01 | 5.72E-01 | 1.000526 |
| 1.60E+01 | 1.65E-01 | 2.62E-01 | 5.73E-01 | 1.000525 |
| 1.60E+01 | 1.65E-01 | 2.62E-01 | 5.73E-01 | 1.000524 |
| 1.60E+01 | 1.65E-01 | 2.62E-01 | 5.74E-01 | 1.000524 |
| 1.61E+01 | 1.65E-01 | 2.62E-01 | 5.74E-01 | 1.000523 |
| 1.61E+01 | 1.65E-01 | 2.61E-01 | 5.75E-01 | 1.000522 |
| 1.61E+01 | 1.64E-01 | 2.61E-01 | 5.75E-01 | 1.000522 |
| 1.61E+01 | 1.64E-01 | 2.61E-01 | 5.76E-01 | 1.000521 |
| 1.61E+01 | 1.64E-01 | 2.60E-01 | 5.76E-01 | 1.000521 |
| 1.62E+01 | 1.64E-01 | 2.60E-01 | 5.77E-01 | 1.00052 |
| 1.62E+01 | 1.64E-01 | 2.60E-01 | 5.77E-01 | 1.000519 |
| 1.62E+01 | 1.63E-01 | 2.59E-01 | 5.78E-01 | 1.000519 |
| 1.62E+01 | 1.63E-01 | 2.59E-01 | 5.78E-01 | 1.000518 |
| 1.62E+01 | 1.63E-01 | 2.59E-01 | 5.79E-01 | 1.000517 |
| 1.63E+01 | 1.63E-01 | 2.58E-01 | 5.79E-01 | 1.000517 |
| 1.63E+01 | 1.63E-01 | 2.58E-01 | 5.80E-01 | 1.000516 |
| 1.63E+01 | 1.62E-01 | 2.58E-01 | 5.80E-01 | 1.000515 |
| 1.63E+01 | 1.62E-01 | 2.57E-01 | 5.81E-01 | 1.000515 |
| 1.63E+01 | 1.62E-01 | 2.57E-01 | 5.81E-01 | 1.000514 |
| 1.64E+01 | 1.62E-01 | 2.57E-01 | 5.82E-01 | 1.000514 |
| 1.64E+01 | 1.62E-01 | 2.56E-01 | 5.82E-01 | 1.000513 |
| 1.64E+01 | 1.61E-01 | 2.56E-01 | 5.83E-01 | 1.000512 |
| 1.64E+01 | 1.61E-01 | 2.56E-01 | 5.83E-01 | 1.000512 |
| 1.64E+01 | 1.61E-01 | 2.56E-01 | 5.84E-01 | 1.000511 |
| 1.65E+01 | 1.61E-01 | 2.55E-01 | 5.85E-01 | 1.00051 |
| 1.65E+01 | 1.61E-01 | 2.55E-01 | 5.85E-01 | 1.00051 |
| 1.65E+01 | 1.60E-01 | 2.55E-01 | 5.86E-01 | 1.000509 |

| | | | | |
|----------|----------|----------|----------|----------|
| 1.65E+01 | 1.60E-01 | 2.54E-01 | 5.86E-01 | 1.000509 |
| 1.65E+01 | 1.60E-01 | 2.54E-01 | 5.87E-01 | 1.000508 |
| 1.66E+01 | 1.60E-01 | 2.54E-01 | 5.87E-01 | 1.000507 |
| 1.66E+01 | 1.60E-01 | 2.53E-01 | 5.88E-01 | 1.000507 |
| 1.66E+01 | 1.59E-01 | 2.53E-01 | 5.88E-01 | 1.000506 |
| 1.66E+01 | 1.59E-01 | 2.53E-01 | 5.89E-01 | 1.000505 |
| 1.66E+01 | 1.59E-01 | 2.52E-01 | 5.89E-01 | 1.000505 |
| 1.67E+01 | 1.59E-01 | 2.52E-01 | 5.90E-01 | 1.000504 |
| 1.67E+01 | 1.59E-01 | 2.52E-01 | 5.90E-01 | 1.000504 |
| 1.67E+01 | 1.58E-01 | 2.52E-01 | 5.91E-01 | 1.000503 |
| 1.67E+01 | 1.58E-01 | 2.51E-01 | 5.91E-01 | 1.000502 |
| 1.67E+01 | 1.58E-01 | 2.51E-01 | 5.92E-01 | 1.000502 |
| 1.68E+01 | 1.58E-01 | 2.51E-01 | 5.92E-01 | 1.000501 |
| 1.68E+01 | 1.58E-01 | 2.50E-01 | 5.93E-01 | 1.000501 |
| 1.68E+01 | 1.57E-01 | 2.50E-01 | 5.93E-01 | 1.0005 |
| 1.68E+01 | 1.57E-01 | 2.50E-01 | 5.94E-01 | 1.000499 |
| 1.68E+01 | 1.57E-01 | 2.49E-01 | 5.94E-01 | 1.000499 |
| 1.69E+01 | 1.57E-01 | 2.49E-01 | 5.95E-01 | 1.000498 |
| 1.69E+01 | 1.57E-01 | 2.49E-01 | 5.95E-01 | 1.000498 |
| 1.69E+01 | 1.56E-01 | 2.48E-01 | 5.96E-01 | 1.000497 |
| 1.69E+01 | 1.56E-01 | 2.48E-01 | 5.96E-01 | 1.000496 |
| 1.69E+01 | 1.56E-01 | 2.48E-01 | 5.97E-01 | 1.000496 |
| 1.70E+01 | 1.56E-01 | 2.48E-01 | 5.97E-01 | 1.000495 |
| 1.70E+01 | 1.56E-01 | 2.47E-01 | 5.98E-01 | 1.000494 |
| 1.70E+01 | 1.55E-01 | 2.47E-01 | 5.98E-01 | 1.000494 |
| 1.70E+01 | 1.55E-01 | 2.47E-01 | 5.99E-01 | 1.000493 |
| 1.70E+01 | 1.55E-01 | 2.46E-01 | 5.99E-01 | 1.000493 |
| 1.71E+01 | 1.55E-01 | 2.46E-01 | 6.00E-01 | 1.000492 |
| 1.71E+01 | 1.55E-01 | 2.46E-01 | 6.00E-01 | 1.000491 |
| 1.71E+01 | 1.55E-01 | 2.45E-01 | 6.01E-01 | 1.000491 |
| 1.71E+01 | 1.54E-01 | 2.45E-01 | 6.01E-01 | 1.00049 |
| 1.71E+01 | 1.54E-01 | 2.45E-01 | 6.02E-01 | 1.00049 |
| 1.72E+01 | 1.54E-01 | 2.45E-01 | 6.02E-01 | 1.000489 |
| 1.72E+01 | 1.54E-01 | 2.44E-01 | 6.02E-01 | 1.000488 |
| 1.72E+01 | 1.54E-01 | 2.44E-01 | 6.03E-01 | 1.000488 |
| 1.72E+01 | 1.53E-01 | 2.44E-01 | 6.03E-01 | 1.000487 |
| 1.72E+01 | 1.53E-01 | 2.43E-01 | 6.04E-01 | 1.000487 |
| 1.73E+01 | 1.53E-01 | 2.43E-01 | 6.04E-01 | 1.000486 |
| 1.73E+01 | 1.53E-01 | 2.43E-01 | 6.05E-01 | 1.000486 |
| 1.73E+01 | 1.53E-01 | 2.42E-01 | 6.05E-01 | 1.000485 |
| 1.73E+01 | 1.52E-01 | 2.42E-01 | 6.06E-01 | 1.000484 |
| 1.73E+01 | 1.52E-01 | 2.42E-01 | 6.06E-01 | 1.000484 |
| 1.74E+01 | 1.52E-01 | 2.42E-01 | 6.07E-01 | 1.000483 |
| 1.74E+01 | 1.52E-01 | 2.41E-01 | 6.07E-01 | 1.000483 |
| 1.74E+01 | 1.52E-01 | 2.41E-01 | 6.08E-01 | 1.000482 |
| 1.74E+01 | 1.52E-01 | 2.41E-01 | 6.08E-01 | 1.000481 |
| 1.74E+01 | 1.51E-01 | 2.40E-01 | 6.09E-01 | 1.000481 |
| 1.75E+01 | 1.51E-01 | 2.40E-01 | 6.09E-01 | 1.00048 |
| 1.75E+01 | 1.51E-01 | 2.40E-01 | 6.10E-01 | 1.00048 |
| 1.75E+01 | 1.51E-01 | 2.40E-01 | 6.10E-01 | 1.000479 |
| 1.75E+01 | 1.51E-01 | 2.39E-01 | 6.11E-01 | 1.000478 |
| 1.75E+01 | 1.50E-01 | 2.39E-01 | 6.11E-01 | 1.000478 |
| 1.76E+01 | 1.50E-01 | 2.39E-01 | 6.12E-01 | 1.000477 |
| 1.76E+01 | 1.50E-01 | 2.38E-01 | 6.12E-01 | 1.000477 |
| 1.76E+01 | 1.50E-01 | 2.38E-01 | 6.13E-01 | 1.000476 |
| 1.76E+01 | 1.50E-01 | 2.38E-01 | 6.13E-01 | 1.000476 |

| | | | | |
|----------|----------|----------|----------|----------|
| 1.76E+01 | 1.49E-01 | 2.37E-01 | 6.14E-01 | 1.000475 |
| 1.77E+01 | 1.49E-01 | 2.37E-01 | 6.14E-01 | 1.000474 |
| 1.77E+01 | 1.49E-01 | 2.37E-01 | 6.15E-01 | 1.000474 |
| 1.77E+01 | 1.49E-01 | 2.37E-01 | 6.15E-01 | 1.000473 |
| 1.77E+01 | 1.49E-01 | 2.36E-01 | 6.15E-01 | 1.000473 |
| 1.77E+01 | 1.49E-01 | 2.36E-01 | 6.16E-01 | 1.000472 |
| 1.78E+01 | 1.48E-01 | 2.36E-01 | 6.16E-01 | 1.000471 |
| 1.78E+01 | 1.48E-01 | 2.35E-01 | 6.17E-01 | 1.000471 |
| 1.78E+01 | 1.48E-01 | 2.35E-01 | 6.17E-01 | 1.00047 |
| 1.78E+01 | 1.48E-01 | 2.35E-01 | 6.18E-01 | 1.00047 |
| 1.78E+01 | 1.48E-01 | 2.35E-01 | 6.18E-01 | 1.000469 |
| 1.79E+01 | 1.47E-01 | 2.34E-01 | 6.19E-01 | 1.000469 |
| 1.79E+01 | 1.47E-01 | 2.34E-01 | 6.19E-01 | 1.000468 |
| 1.79E+01 | 1.47E-01 | 2.34E-01 | 6.20E-01 | 1.000467 |
| 1.79E+01 | 1.47E-01 | 2.33E-01 | 6.20E-01 | 1.000467 |
| 1.79E+01 | 1.47E-01 | 2.33E-01 | 6.21E-01 | 1.000466 |
| 1.80E+01 | 1.47E-01 | 2.33E-01 | 6.21E-01 | 1.000466 |
| 1.80E+01 | 1.46E-01 | 2.33E-01 | 6.22E-01 | 1.000465 |
| 1.80E+01 | 1.46E-01 | 2.32E-01 | 6.22E-01 | 1.000465 |
| 1.80E+01 | 1.46E-01 | 2.32E-01 | 6.22E-01 | 1.000464 |
| 1.80E+01 | 1.46E-01 | 2.32E-01 | 6.23E-01 | 1.000463 |
| 1.81E+01 | 1.46E-01 | 2.31E-01 | 6.23E-01 | 1.000463 |
| 1.81E+01 | 1.45E-01 | 2.31E-01 | 6.24E-01 | 1.000462 |
| 1.81E+01 | 1.45E-01 | 2.31E-01 | 6.24E-01 | 1.000462 |
| 1.81E+01 | 1.45E-01 | 2.31E-01 | 6.25E-01 | 1.000461 |
| 1.81E+01 | 1.45E-01 | 2.30E-01 | 6.25E-01 | 1.000461 |
| 1.82E+01 | 1.45E-01 | 2.30E-01 | 6.26E-01 | 1.00046 |
| 1.82E+01 | 1.45E-01 | 2.30E-01 | 6.26E-01 | 1.000459 |
| 1.82E+01 | 1.44E-01 | 2.29E-01 | 6.27E-01 | 1.000459 |
| 1.82E+01 | 1.44E-01 | 2.29E-01 | 6.27E-01 | 1.000458 |
| 1.82E+01 | 1.44E-01 | 2.29E-01 | 6.28E-01 | 1.000458 |
| 1.83E+01 | 1.44E-01 | 2.29E-01 | 6.28E-01 | 1.000457 |
| 1.83E+01 | 1.44E-01 | 2.28E-01 | 6.28E-01 | 1.000457 |
| 1.83E+01 | 1.43E-01 | 2.28E-01 | 6.29E-01 | 1.000456 |
| 1.83E+01 | 1.43E-01 | 2.28E-01 | 6.29E-01 | 1.000456 |
| 1.83E+01 | 1.43E-01 | 2.27E-01 | 6.30E-01 | 1.000455 |
| 1.84E+01 | 1.43E-01 | 2.27E-01 | 6.30E-01 | 1.000454 |
| 1.84E+01 | 1.43E-01 | 2.27E-01 | 6.31E-01 | 1.000454 |
| 1.84E+01 | 1.43E-01 | 2.27E-01 | 6.31E-01 | 1.000453 |
| 1.84E+01 | 1.42E-01 | 2.26E-01 | 6.32E-01 | 1.000453 |
| 1.84E+01 | 1.42E-01 | 2.26E-01 | 6.32E-01 | 1.000452 |
| 1.85E+01 | 1.42E-01 | 2.26E-01 | 6.33E-01 | 1.000452 |
| 1.85E+01 | 1.42E-01 | 2.26E-01 | 6.33E-01 | 1.000451 |
| 1.85E+01 | 1.42E-01 | 2.25E-01 | 6.33E-01 | 1.000451 |
| 1.85E+01 | 1.42E-01 | 2.25E-01 | 6.34E-01 | 1.00045 |
| 1.85E+01 | 1.41E-01 | 2.25E-01 | 6.34E-01 | 1.000449 |
| 1.86E+01 | 1.41E-01 | 2.24E-01 | 6.35E-01 | 1.000449 |
| 1.86E+01 | 1.41E-01 | 2.24E-01 | 6.35E-01 | 1.000448 |
| 1.86E+01 | 1.41E-01 | 2.24E-01 | 6.36E-01 | 1.000448 |
| 1.86E+01 | 1.41E-01 | 2.24E-01 | 6.36E-01 | 1.000447 |
| 1.86E+01 | 1.41E-01 | 2.23E-01 | 6.37E-01 | 1.000447 |
| 1.87E+01 | 1.40E-01 | 2.23E-01 | 6.37E-01 | 1.000446 |
| 1.87E+01 | 1.40E-01 | 2.23E-01 | 6.37E-01 | 1.000446 |
| 1.87E+01 | 1.40E-01 | 2.23E-01 | 6.38E-01 | 1.000445 |
| 1.87E+01 | 1.40E-01 | 2.22E-01 | 6.38E-01 | 1.000445 |
| 1.87E+01 | 1.40E-01 | 2.22E-01 | 6.39E-01 | 1.000444 |

| | | | | |
|----------|----------|----------|----------|----------|
| 1.88E+01 | 1.39E-01 | 2.22E-01 | 6.39E-01 | 1.000443 |
| 1.88E+01 | 1.39E-01 | 2.21E-01 | 6.40E-01 | 1.000443 |
| 1.88E+01 | 1.39E-01 | 2.21E-01 | 6.40E-01 | 1.000442 |
| 1.88E+01 | 1.39E-01 | 2.21E-01 | 6.41E-01 | 1.000442 |
| 1.88E+01 | 1.39E-01 | 2.21E-01 | 6.41E-01 | 1.000441 |
| 1.89E+01 | 1.39E-01 | 2.20E-01 | 6.41E-01 | 1.000441 |
| 1.89E+01 | 1.38E-01 | 2.20E-01 | 6.42E-01 | 1.00044 |
| 1.89E+01 | 1.38E-01 | 2.20E-01 | 6.42E-01 | 1.00044 |
| 1.89E+01 | 1.38E-01 | 2.20E-01 | 6.43E-01 | 1.000439 |
| 1.89E+01 | 1.38E-01 | 2.19E-01 | 6.43E-01 | 1.000439 |
| 1.90E+01 | 1.38E-01 | 2.19E-01 | 6.44E-01 | 1.000438 |
| 1.90E+01 | 1.38E-01 | 2.19E-01 | 6.44E-01 | 1.000437 |
| 1.90E+01 | 1.37E-01 | 2.18E-01 | 6.45E-01 | 1.000437 |
| 1.90E+01 | 1.37E-01 | 2.18E-01 | 6.45E-01 | 1.000436 |
| 1.90E+01 | 1.37E-01 | 2.18E-01 | 6.45E-01 | 1.000436 |
| 1.91E+01 | 1.37E-01 | 2.18E-01 | 6.46E-01 | 1.000435 |
| 1.91E+01 | 1.37E-01 | 2.17E-01 | 6.46E-01 | 1.000435 |
| 1.91E+01 | 1.37E-01 | 2.17E-01 | 6.47E-01 | 1.000434 |
| 1.91E+01 | 1.36E-01 | 2.17E-01 | 6.47E-01 | 1.000434 |
| 1.91E+01 | 1.36E-01 | 2.17E-01 | 6.48E-01 | 1.000433 |
| 1.92E+01 | 1.36E-01 | 2.16E-01 | 6.48E-01 | 1.000433 |
| 1.92E+01 | 1.36E-01 | 2.16E-01 | 6.48E-01 | 1.000432 |
| 1.92E+01 | 1.36E-01 | 2.16E-01 | 6.49E-01 | 1.000432 |
| 1.92E+01 | 1.36E-01 | 2.16E-01 | 6.49E-01 | 1.000431 |
| 1.92E+01 | 1.35E-01 | 2.15E-01 | 6.50E-01 | 1.000431 |
| 1.93E+01 | 1.35E-01 | 2.15E-01 | 6.50E-01 | 1.00043 |
| 1.93E+01 | 1.35E-01 | 2.15E-01 | 6.51E-01 | 1.00043 |
| 1.93E+01 | 1.35E-01 | 2.14E-01 | 6.51E-01 | 1.000429 |
| 1.93E+01 | 1.35E-01 | 2.14E-01 | 6.51E-01 | 1.000428 |
| 1.93E+01 | 1.35E-01 | 2.14E-01 | 6.52E-01 | 1.000428 |
| 1.94E+01 | 1.34E-01 | 2.14E-01 | 6.52E-01 | 1.000427 |
| 1.94E+01 | 1.34E-01 | 2.13E-01 | 6.53E-01 | 1.000427 |
| 1.94E+01 | 1.34E-01 | 2.13E-01 | 6.53E-01 | 1.000426 |
| 1.94E+01 | 1.34E-01 | 2.13E-01 | 6.54E-01 | 1.000426 |
| 1.94E+01 | 1.34E-01 | 2.13E-01 | 6.54E-01 | 1.000425 |
| 1.95E+01 | 1.34E-01 | 2.12E-01 | 6.54E-01 | 1.000425 |
| 1.95E+01 | 1.33E-01 | 2.12E-01 | 6.55E-01 | 1.000424 |
| 1.95E+01 | 1.33E-01 | 2.12E-01 | 6.55E-01 | 1.000424 |
| 1.95E+01 | 1.33E-01 | 2.12E-01 | 6.56E-01 | 1.000423 |
| 1.95E+01 | 1.33E-01 | 2.11E-01 | 6.56E-01 | 1.000423 |
| 1.96E+01 | 1.33E-01 | 2.11E-01 | 6.57E-01 | 1.000422 |
| 1.96E+01 | 1.33E-01 | 2.11E-01 | 6.57E-01 | 1.000422 |
| 1.96E+01 | 1.32E-01 | 2.11E-01 | 6.57E-01 | 1.000421 |
| 1.96E+01 | 1.32E-01 | 2.10E-01 | 6.58E-01 | 1.000421 |
| 1.96E+01 | 1.32E-01 | 2.10E-01 | 6.58E-01 | 1.00042 |
| 1.97E+01 | 1.32E-01 | 2.10E-01 | 6.59E-01 | 1.00042 |
| 1.97E+01 | 1.32E-01 | 2.10E-01 | 6.59E-01 | 1.000419 |
| 1.97E+01 | 1.32E-01 | 2.09E-01 | 6.59E-01 | 1.000419 |
| 1.97E+01 | 1.31E-01 | 2.09E-01 | 6.60E-01 | 1.000418 |
| 1.97E+01 | 1.31E-01 | 2.09E-01 | 6.60E-01 | 1.000418 |
| 1.98E+01 | 1.31E-01 | 2.09E-01 | 6.61E-01 | 1.000417 |
| 1.98E+01 | 1.31E-01 | 2.08E-01 | 6.61E-01 | 1.000417 |
| 1.98E+01 | 1.31E-01 | 2.08E-01 | 6.62E-01 | 1.000416 |
| 1.98E+01 | 1.31E-01 | 2.08E-01 | 6.62E-01 | 1.000416 |
| 1.98E+01 | 1.31E-01 | 2.08E-01 | 6.62E-01 | 1.000415 |
| 1.99E+01 | 1.30E-01 | 2.07E-01 | 6.63E-01 | 1.000415 |

| | | | | |
|----------|----------|----------|----------|----------|
| 1.99E+01 | 1.30E-01 | 2.07E-01 | 6.63E-01 | 1.000414 |
| 1.99E+01 | 1.30E-01 | 2.07E-01 | 6.64E-01 | 1.000413 |
| 1.99E+01 | 1.30E-01 | 2.06E-01 | 6.64E-01 | 1.000413 |
| 1.99E+01 | 1.30E-01 | 2.06E-01 | 6.64E-01 | 1.000412 |
| 2.00E+01 | 1.30E-01 | 2.06E-01 | 6.65E-01 | 1.000412 |
| 2.00E+01 | 1.29E-01 | 2.06E-01 | 6.65E-01 | 1.000411 |
| 2.00E+01 | 1.29E-01 | 2.05E-01 | 6.66E-01 | 1.000411 |
| 2.00E+01 | 1.29E-01 | 2.05E-01 | 6.66E-01 | 1.00041 |
| 2.00E+01 | 1.29E-01 | 2.05E-01 | 6.67E-01 | 1.00041 |
| 2.01E+01 | 1.29E-01 | 2.05E-01 | 6.67E-01 | 1.000409 |
| 2.01E+01 | 1.29E-01 | 2.04E-01 | 6.67E-01 | 1.000409 |
| 2.01E+01 | 1.28E-01 | 2.04E-01 | 6.68E-01 | 1.000408 |
| 2.01E+01 | 1.28E-01 | 2.04E-01 | 6.68E-01 | 1.000408 |
| 2.01E+01 | 1.28E-01 | 2.04E-01 | 6.69E-01 | 1.000407 |
| 2.02E+01 | 1.28E-01 | 2.03E-01 | 6.69E-01 | 1.000407 |
| 2.02E+01 | 1.28E-01 | 2.03E-01 | 6.69E-01 | 1.000406 |
| 2.02E+01 | 1.28E-01 | 2.03E-01 | 6.70E-01 | 1.000406 |
| 2.02E+01 | 1.27E-01 | 2.03E-01 | 6.70E-01 | 1.000405 |
| 2.02E+01 | 1.27E-01 | 2.02E-01 | 6.71E-01 | 1.000405 |
| 2.03E+01 | 1.27E-01 | 2.02E-01 | 6.71E-01 | 1.000404 |
| 2.03E+01 | 1.27E-01 | 2.02E-01 | 6.71E-01 | 1.000404 |
| 2.03E+01 | 1.27E-01 | 2.02E-01 | 6.72E-01 | 1.000403 |
| 2.03E+01 | 1.27E-01 | 2.01E-01 | 6.72E-01 | 1.000403 |
| 2.03E+01 | 1.27E-01 | 2.01E-01 | 6.73E-01 | 1.000402 |
| 2.04E+01 | 1.26E-01 | 2.01E-01 | 6.73E-01 | 1.000402 |
| 2.04E+01 | 1.26E-01 | 2.01E-01 | 6.73E-01 | 1.000401 |
| 2.04E+01 | 1.26E-01 | 2.00E-01 | 6.74E-01 | 1.000401 |
| 2.04E+01 | 1.26E-01 | 2.00E-01 | 6.74E-01 | 1.000401 |
| 2.04E+01 | 1.26E-01 | 2.00E-01 | 6.75E-01 | 1.0004 |
| 2.05E+01 | 1.26E-01 | 2.00E-01 | 6.75E-01 | 1.0004 |
| 2.05E+01 | 1.25E-01 | 2.00E-01 | 6.75E-01 | 1.000399 |
| 2.05E+01 | 1.25E-01 | 1.99E-01 | 6.76E-01 | 1.000399 |
| 2.05E+01 | 1.25E-01 | 1.99E-01 | 6.76E-01 | 1.000398 |
| 2.05E+01 | 1.25E-01 | 1.99E-01 | 6.77E-01 | 1.000398 |
| 2.06E+01 | 1.25E-01 | 1.99E-01 | 6.77E-01 | 1.000397 |
| 2.06E+01 | 1.25E-01 | 1.98E-01 | 6.77E-01 | 1.000397 |
| 2.06E+01 | 1.25E-01 | 1.98E-01 | 6.78E-01 | 1.000396 |
| 2.06E+01 | 1.24E-01 | 1.98E-01 | 6.78E-01 | 1.000396 |
| 2.06E+01 | 1.24E-01 | 1.98E-01 | 6.79E-01 | 1.000395 |
| 2.07E+01 | 1.24E-01 | 1.97E-01 | 6.79E-01 | 1.000395 |
| 2.07E+01 | 1.24E-01 | 1.97E-01 | 6.79E-01 | 1.000394 |
| 2.07E+01 | 1.24E-01 | 1.97E-01 | 6.80E-01 | 1.000394 |
| 2.07E+01 | 1.24E-01 | 1.97E-01 | 6.80E-01 | 1.000393 |
| 2.07E+01 | 1.23E-01 | 1.96E-01 | 6.81E-01 | 1.000393 |
| 2.08E+01 | 1.23E-01 | 1.96E-01 | 6.81E-01 | 1.000392 |
| 2.08E+01 | 1.23E-01 | 1.96E-01 | 6.81E-01 | 1.000392 |
| 2.08E+01 | 1.23E-01 | 1.96E-01 | 6.82E-01 | 1.000391 |
| 2.08E+01 | 1.23E-01 | 1.95E-01 | 6.82E-01 | 1.000391 |
| 2.08E+01 | 1.23E-01 | 1.95E-01 | 6.83E-01 | 1.00039 |
| 2.09E+01 | 1.23E-01 | 1.95E-01 | 6.83E-01 | 1.00039 |
| 2.09E+01 | 1.22E-01 | 1.95E-01 | 6.83E-01 | 1.000389 |
| 2.09E+01 | 1.22E-01 | 1.94E-01 | 6.84E-01 | 1.000389 |
| 2.09E+01 | 1.22E-01 | 1.94E-01 | 6.84E-01 | 1.000388 |
| 2.09E+01 | 1.22E-01 | 1.94E-01 | 6.84E-01 | 1.000388 |
| 2.10E+01 | 1.22E-01 | 1.94E-01 | 6.85E-01 | 1.000387 |
| 2.10E+01 | 1.22E-01 | 1.93E-01 | 6.85E-01 | 1.000387 |

| | | | | |
|----------|----------|----------|----------|----------|
| 2.10E+01 | 1.22E-01 | 1.93E-01 | 6.86E-01 | 1.000386 |
| 2.10E+01 | 1.21E-01 | 1.93E-01 | 6.86E-01 | 1.000386 |
| 2.10E+01 | 1.21E-01 | 1.93E-01 | 6.86E-01 | 1.000386 |
| 2.11E+01 | 1.21E-01 | 1.93E-01 | 6.87E-01 | 1.000385 |
| 2.11E+01 | 1.21E-01 | 1.92E-01 | 6.87E-01 | 1.000385 |
| 2.11E+01 | 1.21E-01 | 1.92E-01 | 6.88E-01 | 1.000384 |
| 2.11E+01 | 1.21E-01 | 1.92E-01 | 6.88E-01 | 1.000384 |
| 2.11E+01 | 1.20E-01 | 1.92E-01 | 6.88E-01 | 1.000383 |
| 2.12E+01 | 1.20E-01 | 1.91E-01 | 6.89E-01 | 1.000383 |
| 2.12E+01 | 1.20E-01 | 1.91E-01 | 6.89E-01 | 1.000382 |
| 2.12E+01 | 1.20E-01 | 1.91E-01 | 6.89E-01 | 1.000382 |
| 2.12E+01 | 1.20E-01 | 1.91E-01 | 6.90E-01 | 1.000381 |
| 2.12E+01 | 1.20E-01 | 1.90E-01 | 6.90E-01 | 1.000381 |
| 2.13E+01 | 1.20E-01 | 1.90E-01 | 6.91E-01 | 1.00038 |
| 2.13E+01 | 1.19E-01 | 1.90E-01 | 6.91E-01 | 1.00038 |
| 2.13E+01 | 1.19E-01 | 1.90E-01 | 6.91E-01 | 1.000379 |
| 2.13E+01 | 1.19E-01 | 1.89E-01 | 6.92E-01 | 1.000379 |
| 2.13E+01 | 1.19E-01 | 1.89E-01 | 6.92E-01 | 1.000379 |
| 2.14E+01 | 1.19E-01 | 1.89E-01 | 6.92E-01 | 1.000378 |

S

