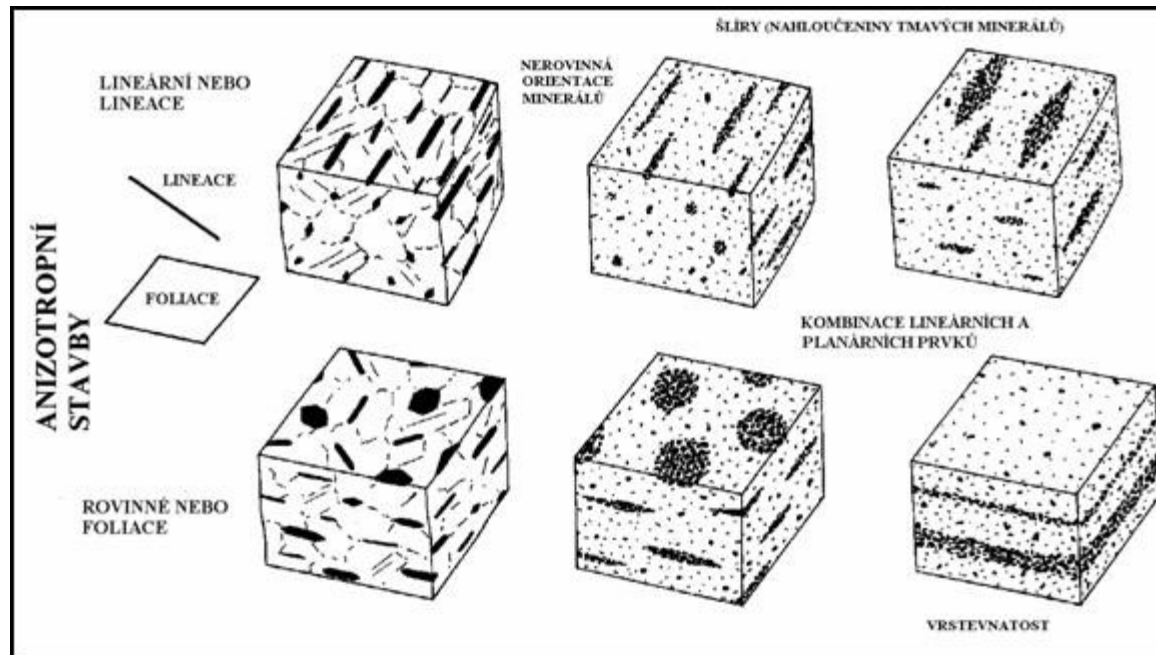
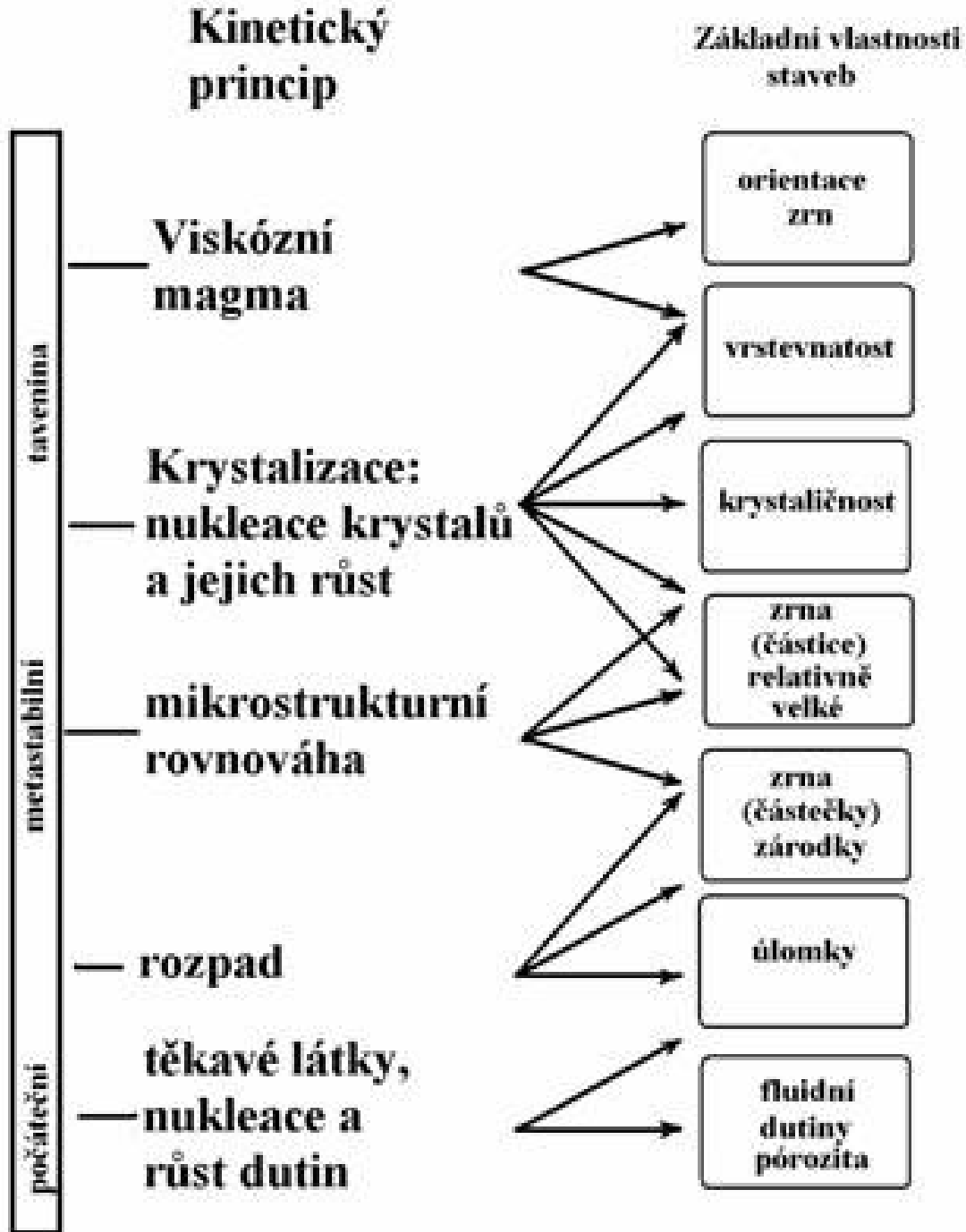


Kinetika stavby magmatických hornin

- Stavba
 - Struktura - Strukturou se zpravidla rozumí prostorové uspořádání součástí.
 - Mikrostruktura - Mikrostruktury magmatických hornin můžeme rozčlenit do několika skupin podle zvolených znaků:
 - způsobu krystalizace (stupně krystaličnosti);
 - absolutní a relativní velikosti součástí;
 - podle tvaru součástí, vývoje krystalů a jejich omezení (automorfie - omezení součástí, změny tvaru před ukončením procesu tuhnutí, změny tvaru vyvolané i v pevné hornině apod.).
 - Odráží tedy vzájemné vztahy mezi jednotlivými horninovými složkami.
- Rozdíl v terminologii české a anglické

Best a Christiansen (2001)

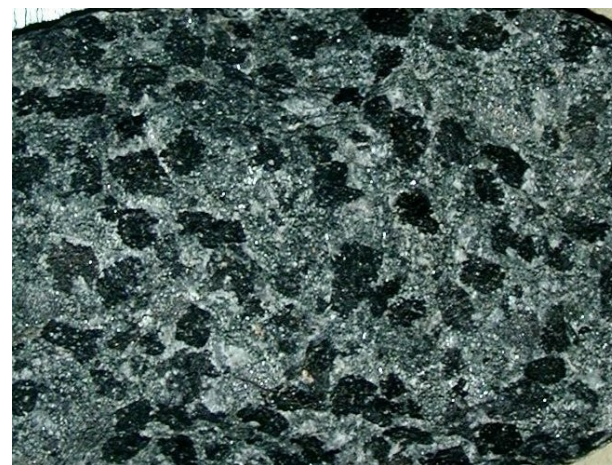




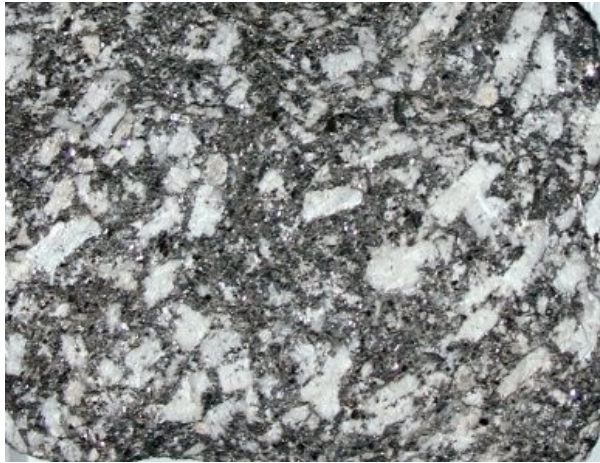
Rozdíl mezi plutonickou a vulkanickou horninou světlou a tmavou - na základě velikosti zrna



Všesměrně zrnité struktury hornina leukokratní - melanokratní



Lineárně paralelní – smouhovitá
(plutonity)



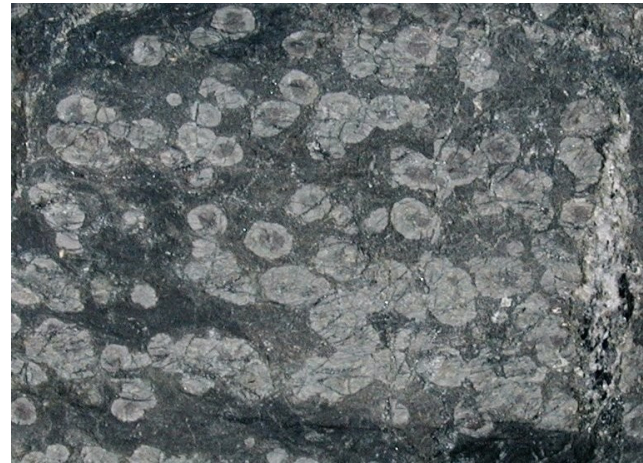
Lineárně paralelní (fluidální)
- kompaktní (vulkanity)



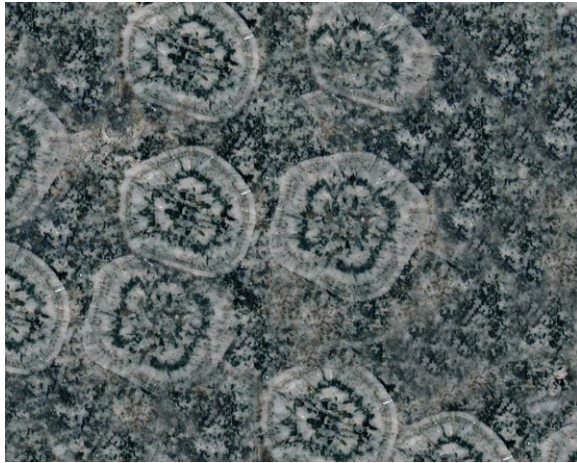
Kontakt plutonit - vulkanit



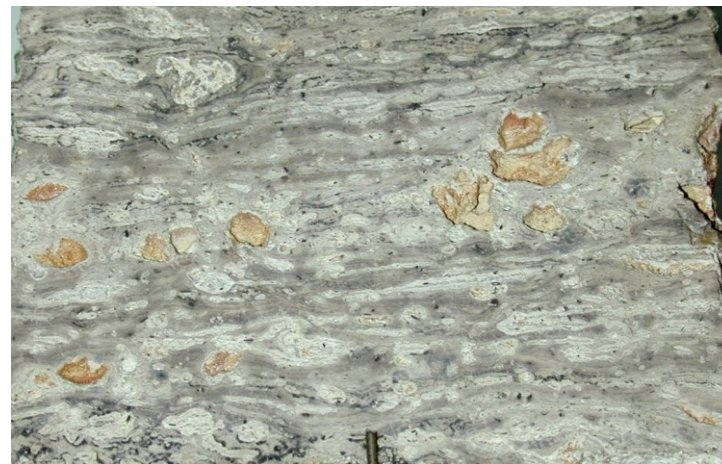
Pórovité – otevřené mandlovcovitá - sférolitická



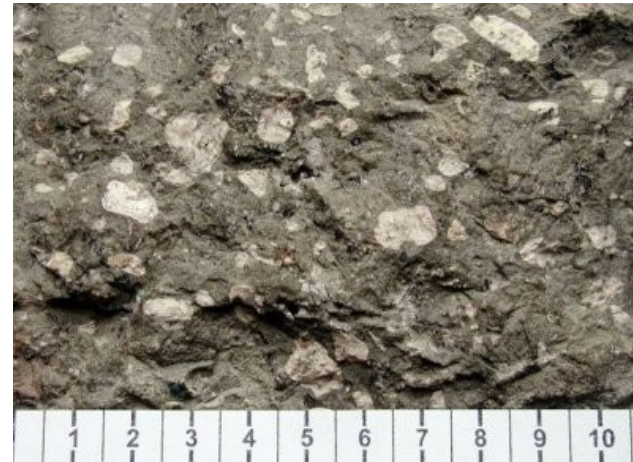
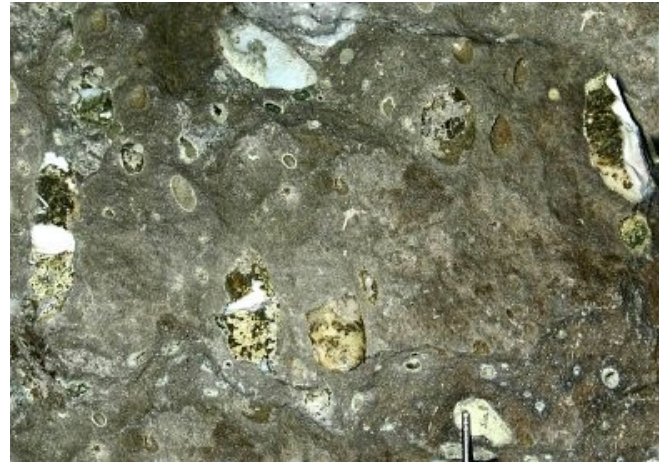
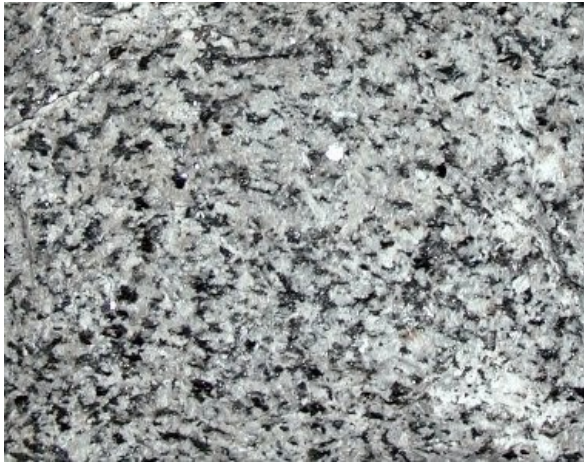
Orbikuly – plutonit (diority) – andezit
rapakiwi



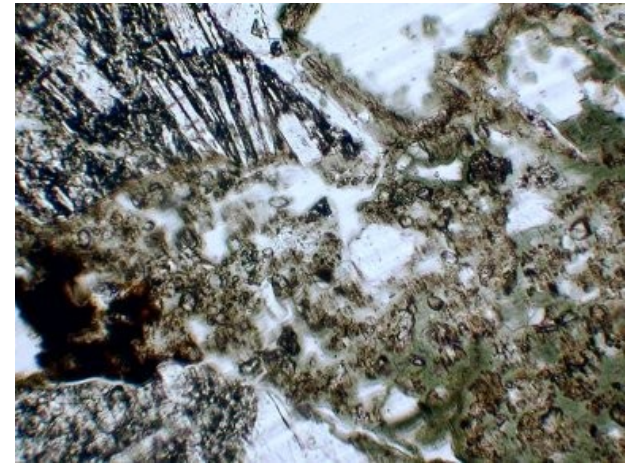
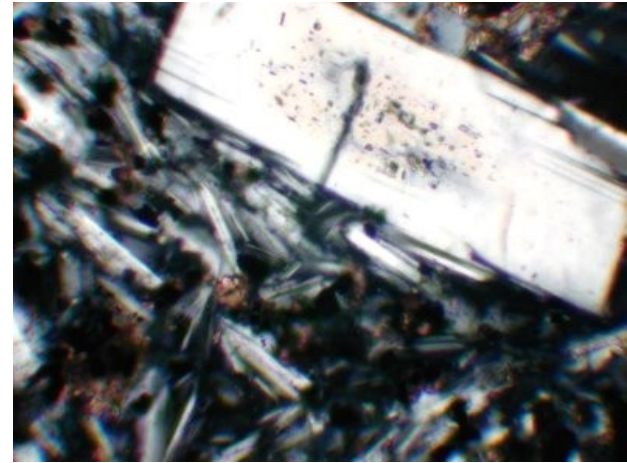
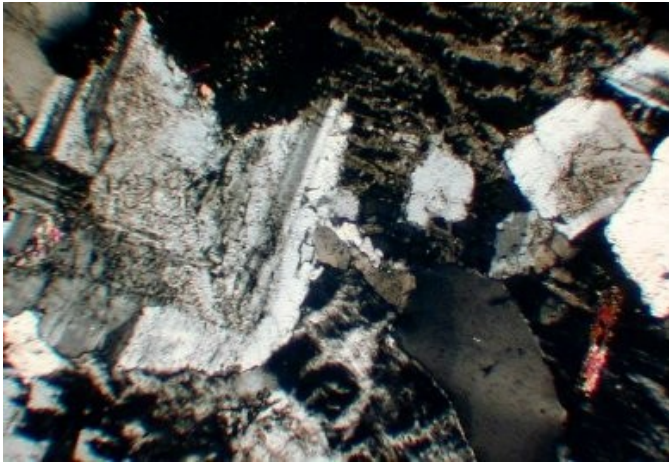
Sklovitá, hemikrystalická, štěpení magmatu, asimilace



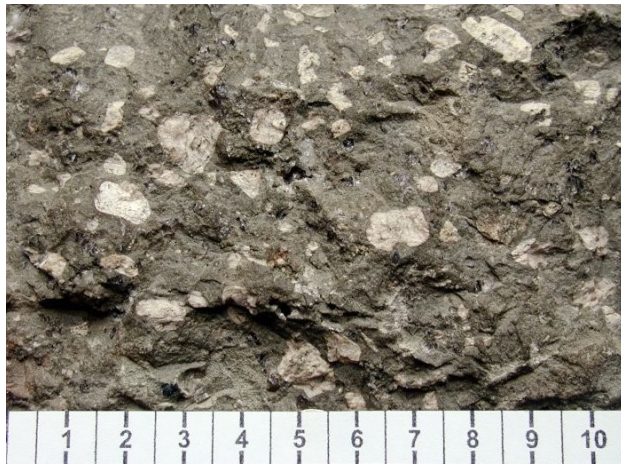
Fanerit - afanit porfyrický fanerit – porfyrický afanit



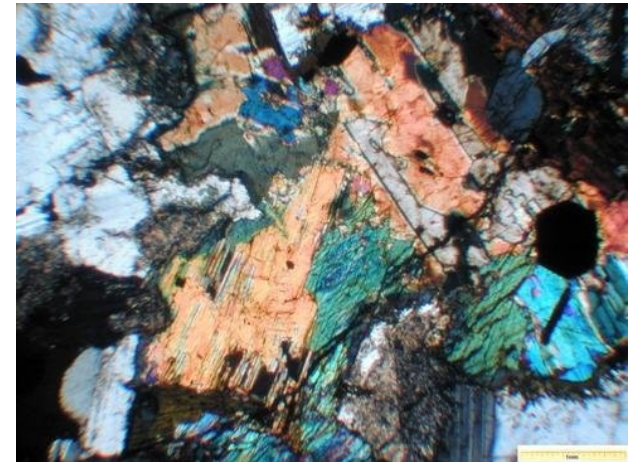
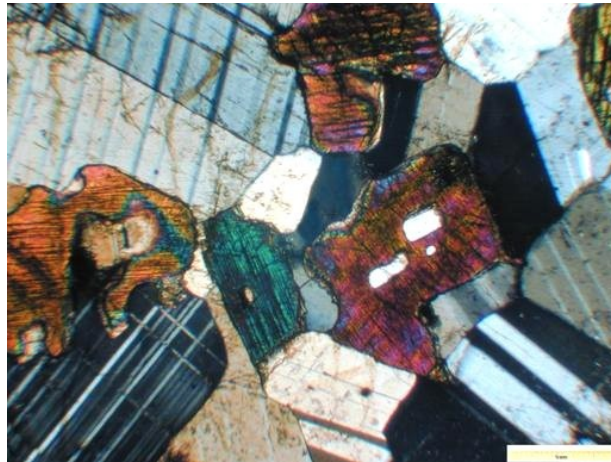
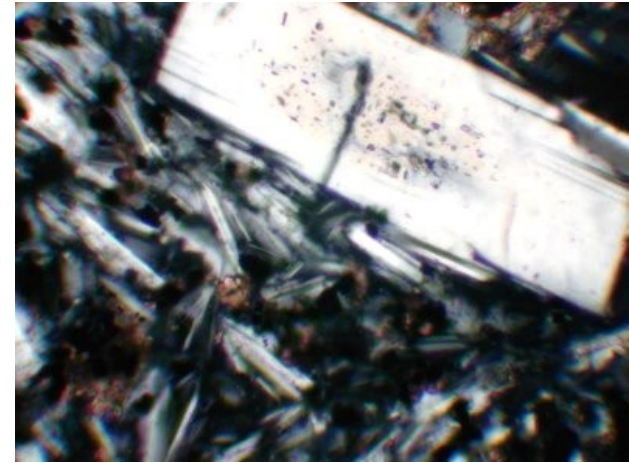
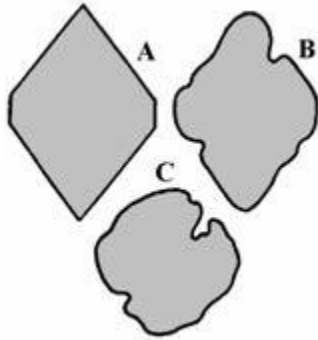
Stupeň krystaličnosti holokrystalická – hemikrystalická - sklovitá



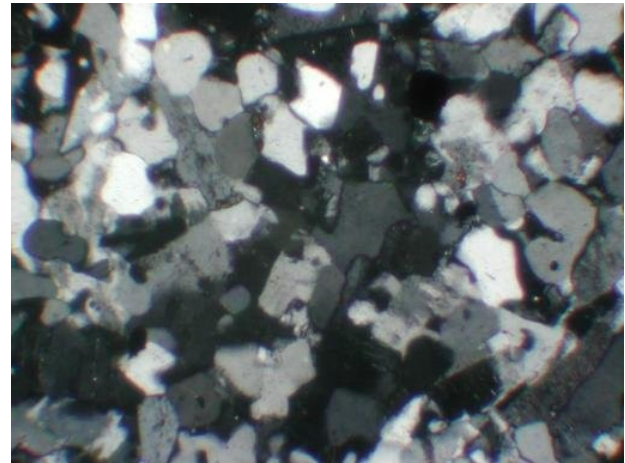
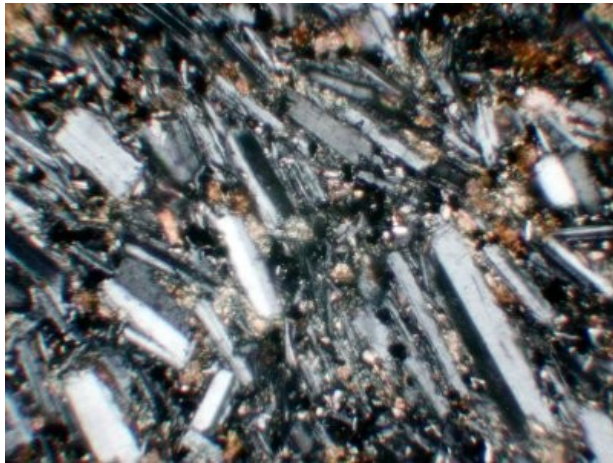
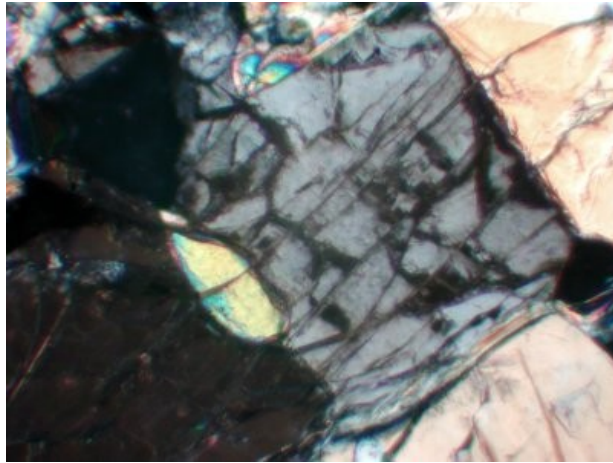
Porfyrická vyrostlice – základní hmota



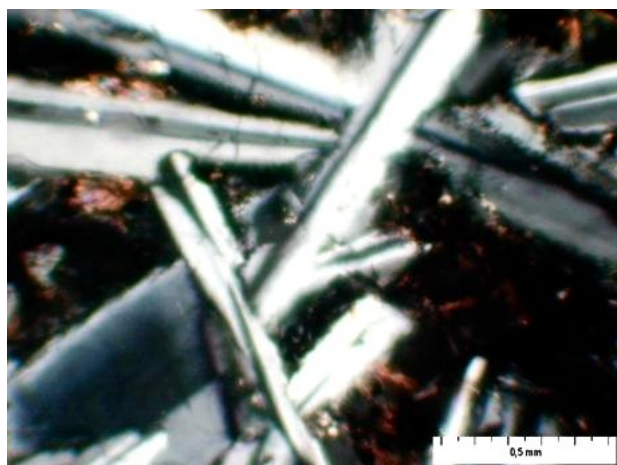
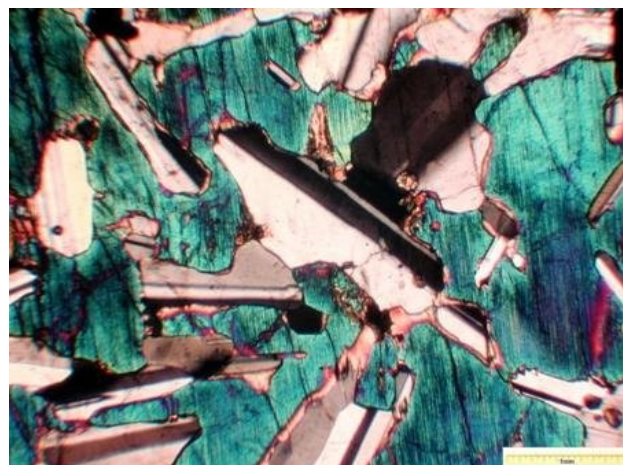
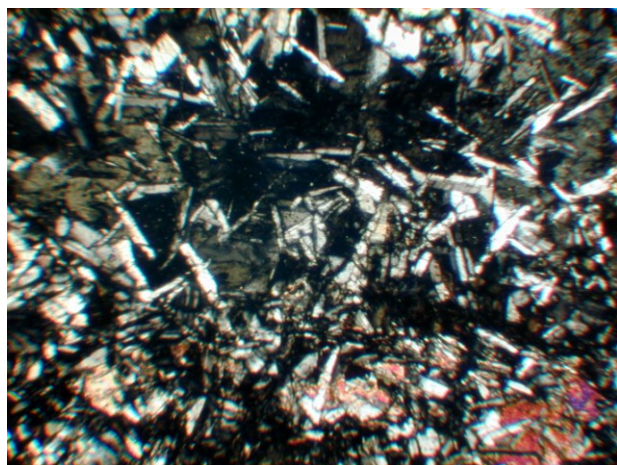
Omezení minerálů: automorfní, hypautomorfní, xenomorfní omezení minerálů



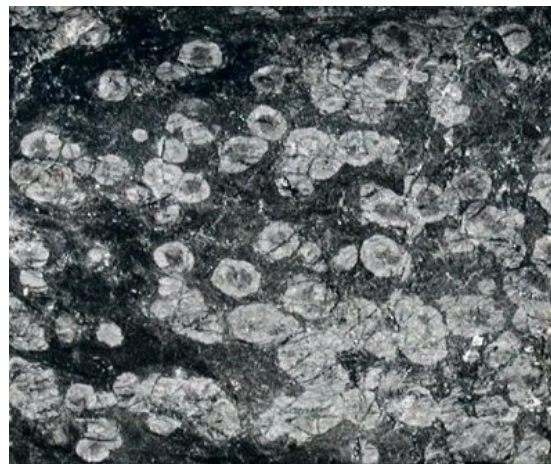
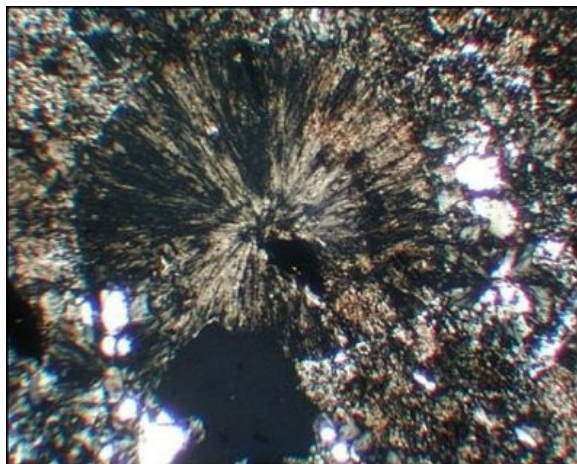
Mikrostruktura panautomorfně zrnitá, hypautomorfně zrnitá,
hypautomorfně prismaticky zrnitá, panxenomorfně zrnitá



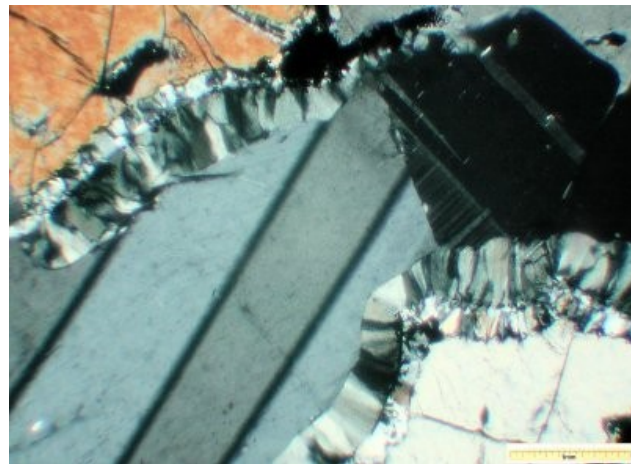
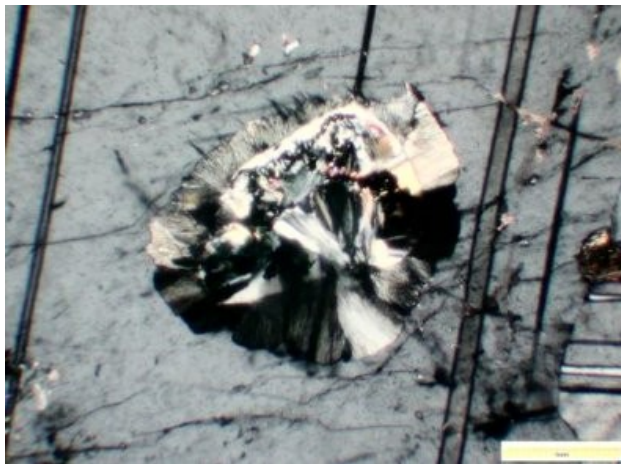
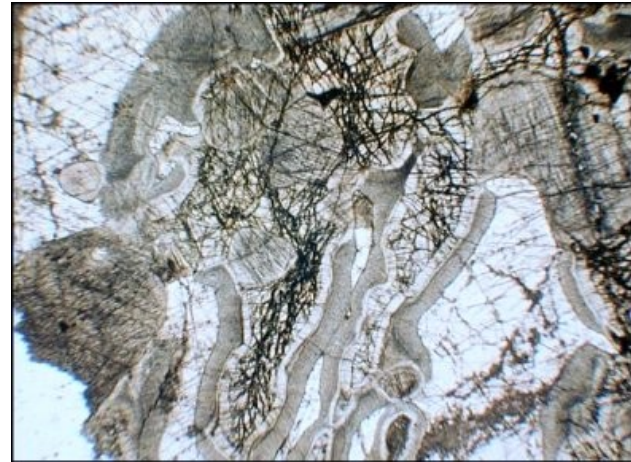
Hypautomorfně zrnitá – ofitická, hyaloofitická, poikiloofitická, granuloofitická



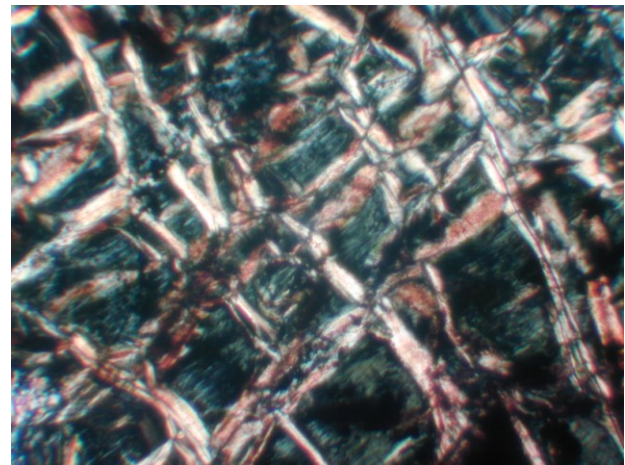
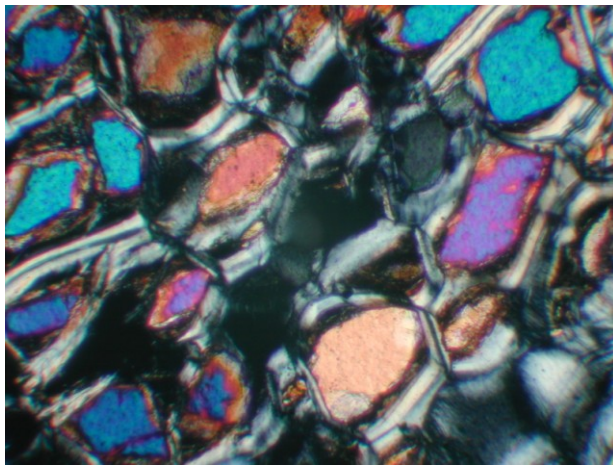
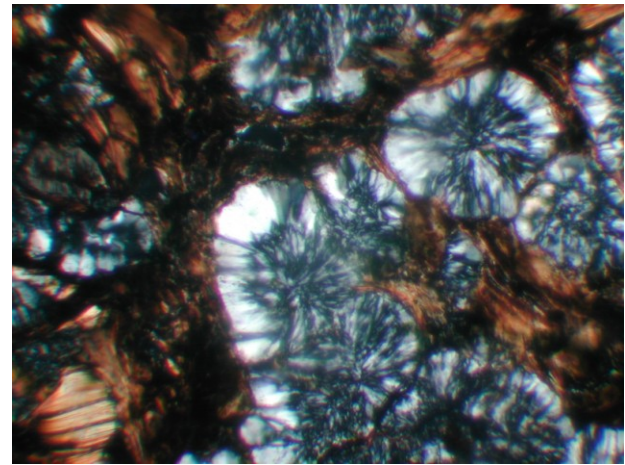
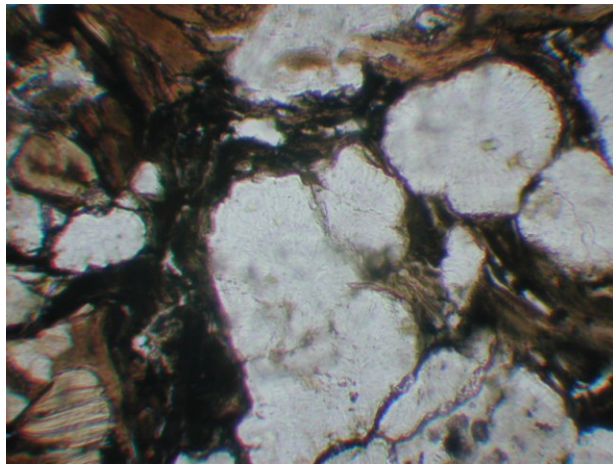
Sférolitická,
porfyrická s holokrystalickou a hemikrystalickou z.h.



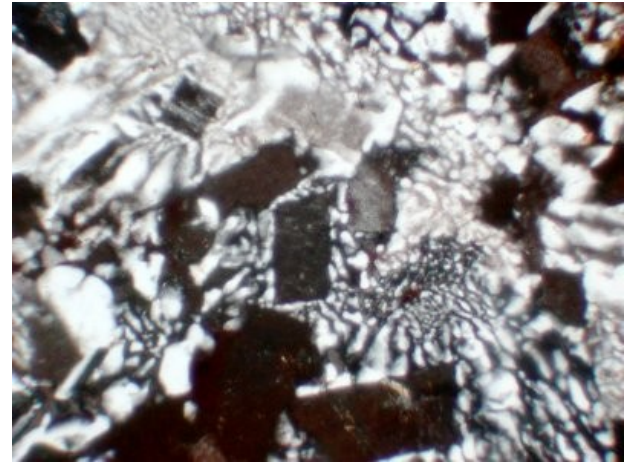
Mikrostruktury kelyfytické – kolem granátu na styku plagioklasu s olivínem



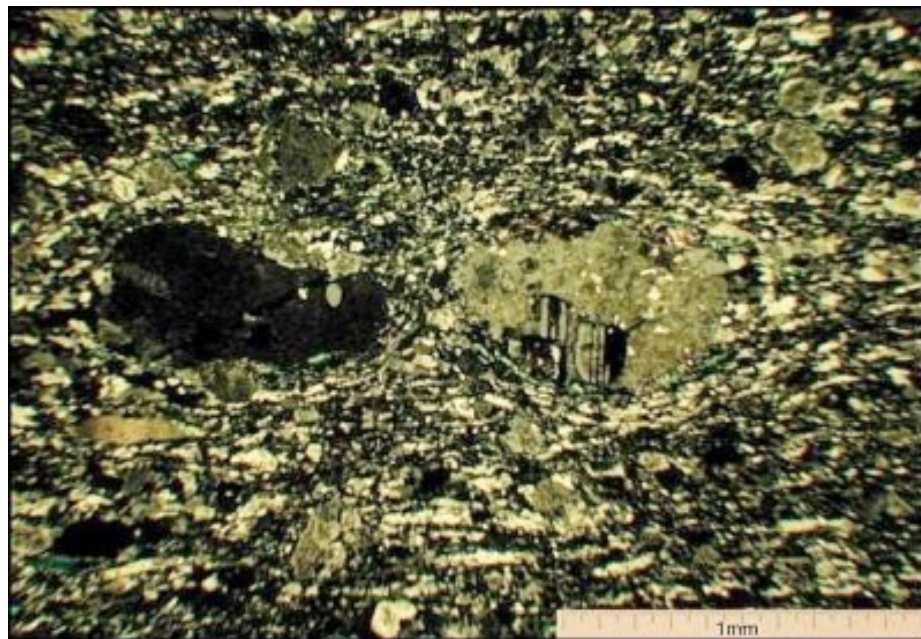
Sférolitická mikrostruktura, smyčková, mřížovitá



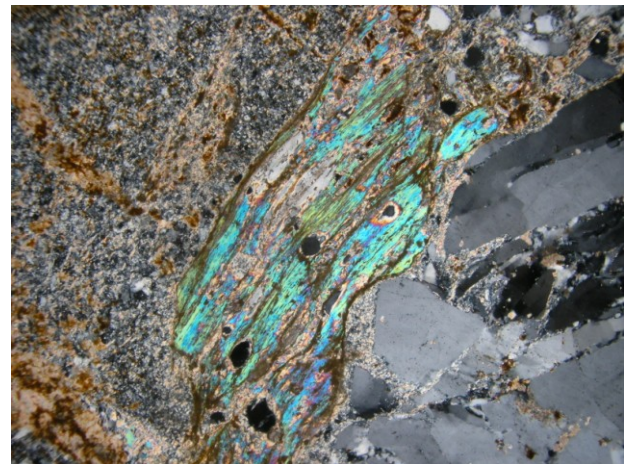
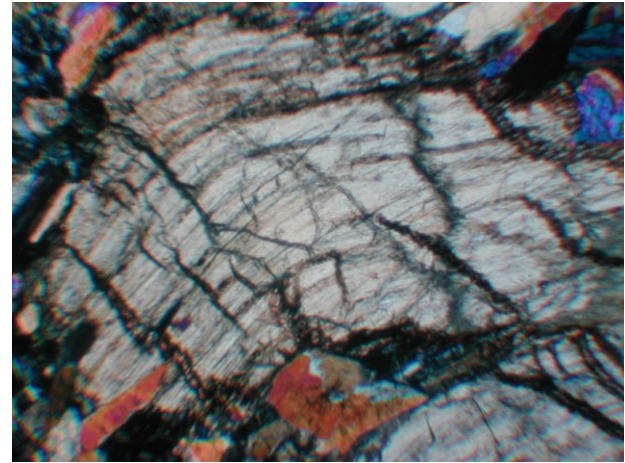
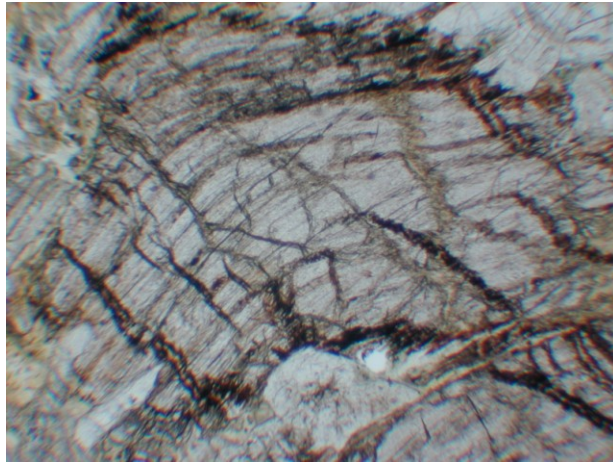
Symplektity



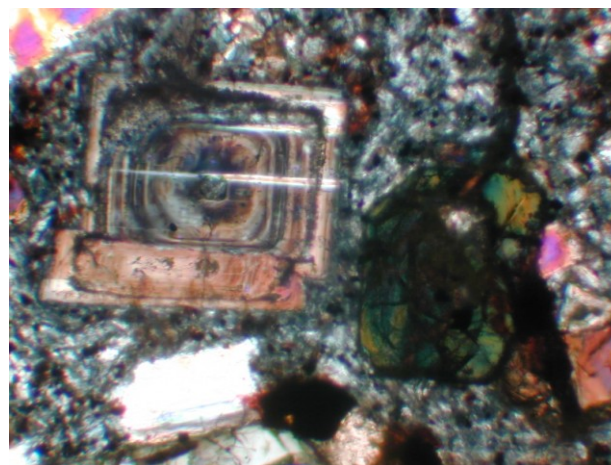
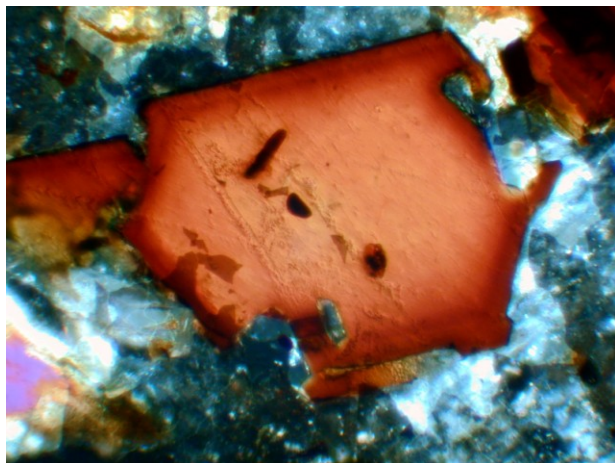
Kataklastická (mylonit) – reliktní (uralitizované gabro)



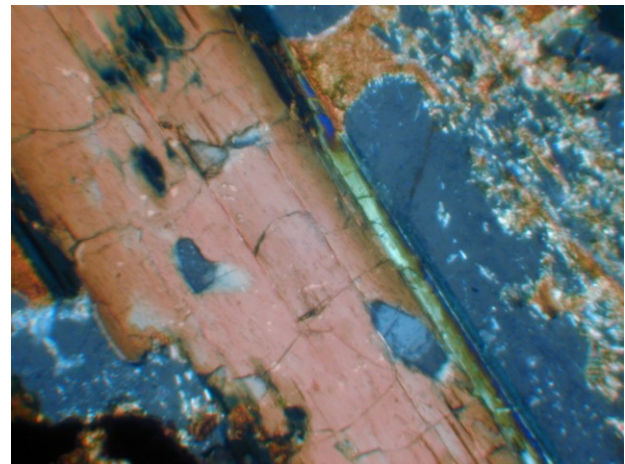
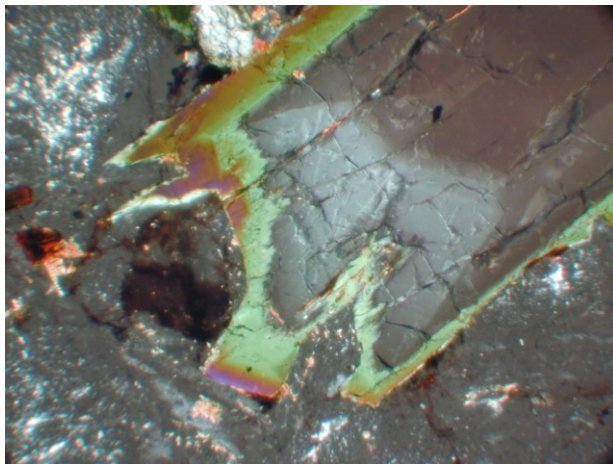
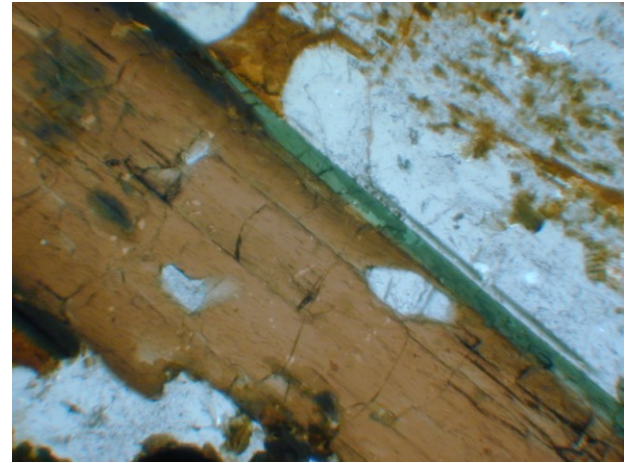
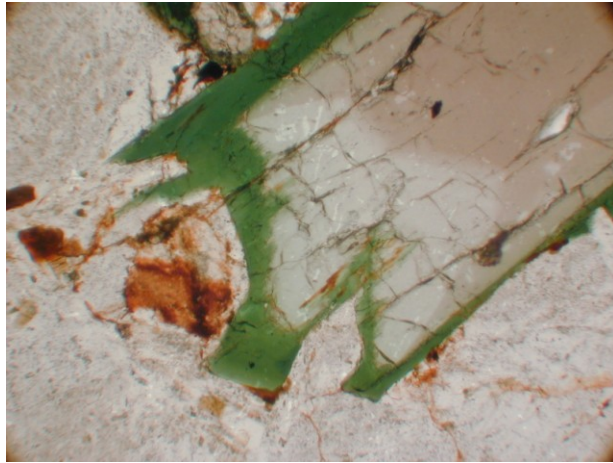
Plastické deformace pyroxenu, přeměna živců, tlakové deformace slíd



Magmatická koroze, sektorová zonálnost, osilační zonálnost



Přeměny pyroxenu a amfibolu



serpentinizace

