

# TRP Channels

Kartik Venkatachalam and Craig Montell

Departments of Biological Chemistry and Neuroscience, The Johns Hopkins University School of Medicine, Baltimore, Maryland 21205; email: cmontell@jhmi.edu

Annu. Rev. Biochem. 2007. 76:387–417

The *Annual Review of Biochemistry* is online at [biochem.annualreviews.org](http://biochem.annualreviews.org)

This article's doi:  
10.1146/annurev.biochem.75.103004.142819

Copyright © 2007 by Annual Reviews.  
All rights reserved

0066-4154/07/0707-0387\$20.00

## Key Words

calcium, diacylglycerol, kidney disease, mucopolipidosis type IV, phospholipase C, sensory transduction

## Abstract

The TRP (Transient Receptor Potential) superfamily of cation channels is remarkable in that it displays greater diversity in activation mechanisms and selectivities than any other group of ion channels. The domain organizations of some TRP proteins are also unusual, as they consist of linked channel and enzyme domains. A unifying theme in this group is that TRP proteins play critical roles in sensory physiology, which include contributions to vision, taste, olfaction, hearing, touch, and thermo- and osmosensation. In addition, TRP channels enable individual cells to sense changes in their local environment. Many TRP channels are activated by a variety of different stimuli and function as signal integrators. The TRP superfamily is divided into seven subfamilies: the five group 1 TRPs (TRPC, TRPV, TRPM, TRPN, and TRPA) and two group 2 subfamilies (TRPP and TRPML). TRP channels are important for human health as mutations in at least four TRP channels underlie disease.

<b>Contents</b>	
INTRODUCTION.....	388
TRP Classification and Phylogenetic Distribution .....	388
ACTIVATION AND REGULATION OF CHANNEL ACTIVITY.....	390
Invertebrate TRPCs .....	390
Mammalian TRPCs .....	392
TRPV .....	394
TRPM.....	396
TRPA and TRPN.....	398
TRPP .....	399
TRPML.....	400
HETEROMULTIMERIZATION AMONG TRP PROTEINS.....	401
SUPRAMOLECULAR COMPLEXES.....	402
The <i>Drosophila</i> Signalplex .....	402
Mammalian TRP-Containing Signaling Complexes .....	402
FUNCTIONS OF TRPs.....	403
Sensing the Outside World .....	403
Sensing the Local Cellular Environment.....	406
TRP CHANNELS AND DISEASE .	408
Hypomagnesemia and Hypocalcemia Owing to Mutations in TRPM6 .....	408
TRPC6, Podocyte Function, and Kidney Disease.....	408
TRPPs and Autosomal Dominant Polycystic Kidney Disease .....	408
TRPML1 and Mucopolidosis Type IV.....	409
Oxidative Stress, Constitutively Active TRPs, and Neuronal Cell Death .....	409
FUTURE PERSPECTIVES .....	410

## INTRODUCTION

Members of the TRP (Transient Receptor Potential) superfamily of channels share the common features of six transmembrane

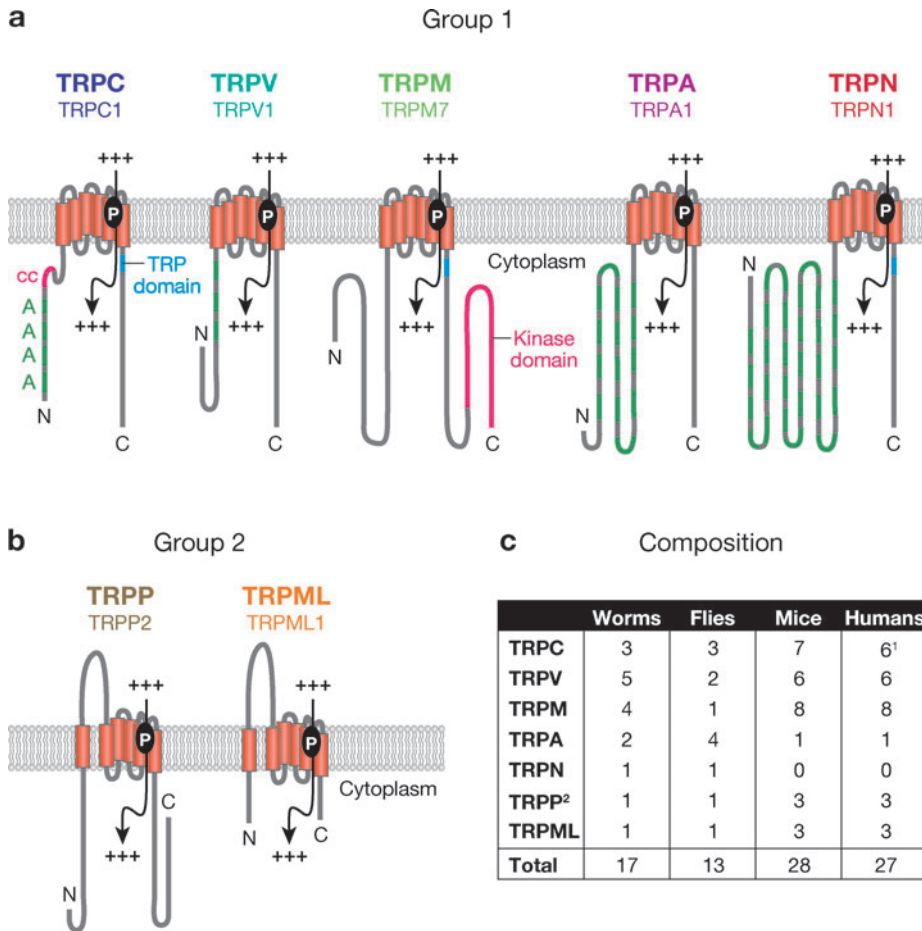
segments, varying degrees of sequence homology, and permeability to cations. Despite these similarities, TRP channels are highly unusual among the known families of ion channels in that they display an impressive diversity of cation selectivities and specific activation mechanisms. Perhaps most amazing is that a single TRP channel can be activated through seemingly disparate mechanisms. In many cases, TRPs can be considered as multiple signal integrators, as the response to one input is modified by another. Nevertheless, a common thread among the superfamily is that TRP channels play critical roles in the responses to all major classes of external stimuli, including light, sound, chemicals, temperature, and touch. TRP channels also imbue individual cells with the ability to sense changes in the local environment, such as alterations in osmolarity.

## TRP Classification and Phylogenetic Distribution

TRP channels are expressed and function in a great variety of multicellular organisms, including worms, fruit flies, zebrafish, mice, and humans. The TRP superfamily is broadly divided into groups 1 and 2, which are themselves divided into seven subfamilies (**Figure 1**) (1). An eighth subfamily, TRPY, consists of yeast TRPs, which are distantly related to the group 1 and group 2 TRPs (2, 3). The existence of TRPs in yeast indicates that the origin of TRP channels predates the emergence of metazoan organisms.

The separation of the group 1 and 2 TRPs is based on sequence and topological differences. The group 1 TRPs consist of five subfamilies, which bear the strongest sequence homology to the founding member of the superfamily, *Drosophila* TRP (4). Those channels most related to *Drosophila* TRP are referred to as the classical or TRPC channels. The TRPV, TRPM, TRPA, and TRPN subfamilies are so named based on the original name of the initially described member of each subfamily. Depending on the organism,

**TRP:** Transient Receptor Potential



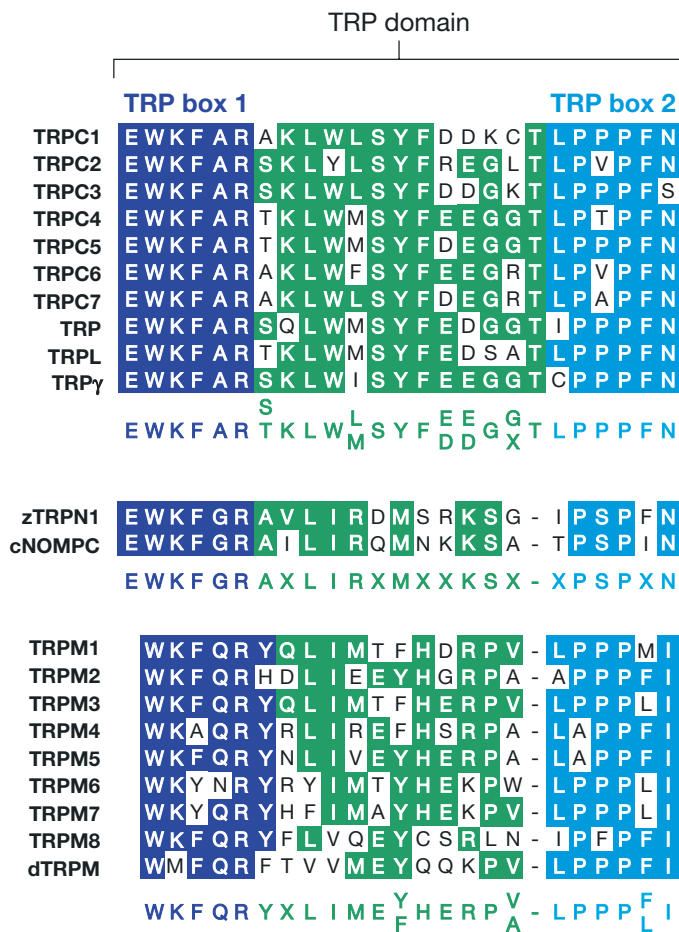
**Figure 1**

The TRP superfamily. (a) Single members from each of the five group 1 subfamilies. (b) Single members from each of the two group 2 subfamilies. The following domains are indicated: A, ankyrin repeats; cc, coiled-coil domain; protein kinase domain; TRP domain. Also shown are transmembrane segments (vertical rectangles) and pore loop (P), allowing the passage of cations (+++). (c) Composition of the TRP superfamily in worms, flies, mice, and humans. <sup>1</sup>Human *TRPC2* is a pseudogene and is not counted. <sup>2</sup>TRPP1-like proteins are not counted. Modified and reprinted with permission from Reference 1.

the group 1 TRP family consists of between 11 and 22 members (Figure 1c). The TRPN proteins are not found in mammals, although they are expressed in some vertebrates, such as zebrafish.

The group 1 TRPs include several notable sequence elements and domains. The largest region of sequence homology spans the six transmembrane segments, including the pore

loop situated between the fifth and sixth transmembrane segments (Figure 1a). TRPC, TRPV, and TRPN channels also contain a TRP domain, which follows the sixth transmembrane segment (Figures 1 and 2). The most conserved portions of the TRP domain are the TRP boxes 1 and 2 (Figure 2). With the exception of the TRPM channels, the TRPs in group 1 have multiple N-terminal



**Figure 2**

The TRP domain. Highly conserved region of 23–25 amino acids C-terminal to the transmembrane domains in TRPCs, TRPNs, and TRPMs. TRP box 1 is invariant in TRPCs, and variations of TRP box 1 are also present in TRPNs and TRPMs. The TRP box 2 is a proline-rich region. Sequences are from mammals, except zTRPN1 is from zebrafish; cNOMPC is from *Caenorhabditis elegans*; and TRP, TRPL, TRP $\gamma$ , and dTRPM are from *Drosophila*.

ankyrin repeats. Three TRPM proteins are so-called chanzymes (5), with C-terminal enzyme domains.

The two subfamilies TRPP and TRPML comprise the group 2 TRPs, which are distantly related to the group 1 TRPs. The TRPP and TRPML proteins share sequence homology over the transmembrane segments and contain a large loop separating the first two transmembrane domains (**Figure 1b**).

**PLC:** phospholipase C

The TRPP subfamily may be the most ancient, as members of this subfamily extend from yeast to mammals (6). The founding TRPP and TRPML proteins were discovered as gene products mutated in autosomal dominant polycystic kidney disease (ADPKD) and mucopolipidosis type IV (MLIV), respectively (7–10). Mutations in two group 1 TRP proteins also underlie human diseases. Autosomal dominant segmental glomerulosclerosis results from disruption of TRPC6 (11, 12), and mutations in TRPM6 cause hypomagnesemia and hypocalcemia (13, 14). Thus TRP channels are also of relevance to human health and disease.

## ACTIVATION AND REGULATION OF CHANNEL ACTIVITY

The mechanism(s) through which a given TRP is activated and regulated cannot be predicted reliably on the basis of its subfamily assignment. For example, thermally activated TRPs belong to members of the TRPV, TRPM, and TRPA subfamilies, while regulated exocytosis stimulates cation influx via several TRPC, TRPV, and TRPM channels. However, in some cases there are similarities among subfamily members, as all TRPC channels are activated through pathways coupled to stimulation of phospholipase C (PLC). The recurring theme is that most TRP channels are activated through a diversity of mechanisms. Remarkably, there are TRP channels, such as TRPV1, which respond to stimuli ranging from heat to botanical compounds, proinflammatory agents, and exocytosis.

### Invertebrate TRPCs

The gene encoding the first member of the TRP superfamily, *Drosophila* TRP (4), is required for maintaining the light response (15). The *Drosophila* phototransduction cascade is initiated when light strikes the G-protein-coupled receptor rhodopsin. This leads to

stimulation of a heterotrimeric G protein, activation of PLC, and subsequent cation influx into the photoreceptor cells (15). Mutations in the *trp* locus result in a transient light response, characterized by a tenfold decrease in  $\text{Ca}^{2+}$  entry (16). These results indicate that *Drosophila* TRP is either a  $\text{Ca}^{2+}$  permeable cation channel or a regulatory protein required for channel activation. The predicted TRP topology, consisting of multiple transmembrane segments (4), combined with heterologous expression studies (17, 18), indicated that TRP was a new type of  $\text{Ca}^{2+}$ -permeable cation channel.

The presence of a transient light response in the absence of functional TRP indicates a role for additional channels. Indeed, there are two other TRPC channels expressed in flies, TRPL (TRP-like) and TRP $\gamma$  (19, 20), and the light response is eliminated in flies with mutations in both *trp* and *trpl* (21). Although TRP is the major source for  $\text{Ca}^{2+}$  entry in the fly eye (16, 21), TRPL has a role in maintaining a sustained response during prolonged illuminations (22). Whereas TRP channels are relatively selective for  $\text{Ca}^{2+}$ , TRPL and TRP $\gamma$  are nonselective cation channels (23).

A key question concerns the mechanisms through which stimulation of PLC leads to the activation of TRP and TRPL in vivo. Stimulation of PLC cleaves phosphoinositide-4,5-bisphosphate (PIP<sub>2</sub>), leading to the production of diacylglycerol (DAG) and the soluble second messenger inositol-1,4,5-trisphosphate (IP<sub>3</sub>). There are at least three models for the mechanism by which TRP and TRPL may be activated. According to one model, IP<sub>3</sub> diffuses rapidly through the cytoplasm and binds to  $\text{Ca}^{2+}$ -permeable IP<sub>3</sub> receptors present in the endoplasmic reticulum (ER) membrane. This leads to  $\text{Ca}^{2+}$  release and depletion of the ER  $\text{Ca}^{2+}$  stores, which in turn activates TRP and TRPL. In fact, *Drosophila* TRP and several mammalian TRPCs are activated through such a store-operated mechanism in heterologous expression systems (1). However, neither TRP nor TRPL is activated

by either thapsigargin, a specific inhibitor of the ER  $\text{Ca}^{2+}$  ATPase, or IP<sub>3</sub>-mediated store depletion in native photoreceptor cells, providing evidence against a role of ER  $\text{Ca}^{2+}$  store depletion on channel activation in vivo (24, 25). Furthermore, mutation of the lone *Drosophila* homolog of the mammalian IP<sub>3</sub> receptor has no effect on channel activation or the photoresponse (26).

A second model suggests that PLC regulates *Drosophila* TRPC activity by reducing the concentration of inhibitory PIP<sub>2</sub>. PIP<sub>2</sub> has been reported to inhibit the activity of exogenously expressed TRPL channels in inside-out patches (27). Therefore, PLC activity could lead to channel activation by alleviating the inhibitory effects of PIP<sub>2</sub>. Although PIP<sub>2</sub> may be inhibitory, depletion of PIP<sub>2</sub> may not be sufficient for channel activation in vivo.

It appears that TRP channel activation is mediated in vivo by DAG or its metabolites, polyunsaturated fatty acids (PUFAs). PUFAs activate TRP and TRPL channels in dissected photoreceptor cells (28), and DAG/PUFAs activate TRPL channels expressed exogenously in insect cells (27, 28). Furthermore, disruption of the eye enriched DAG kinase, which phosphorylates DAG to phosphatidic acid (PA), causes constitutive activity of TRP and TRPL (29). Although PUFA levels were not measured in the DAG-kinase mutants, diversion of DAG to PUFAs instead of PA could elevate PUFA levels, thereby increasing channel activity (29). Further evidence for a role of DAG in TRP activation in vivo is that flies with mutations in the PA phosphatase (PAP), which converts PA back to DAG, have small light responses (30), whereas overexpression of PAP increases channel activity (31).

The activity of TRPL is also downregulated by its light-dependent shuttling out of the phototransducing portion of the photoreceptor cells, the rhabdomeres, into the extrarhabdomeral cell bodies (32). A *Caenorhabditis elegans* TRPC channel, TRP-3, which functions in fertilization, undergoes a developmentally regulated translocation (33). In

---

**TRPL:** TRP-like

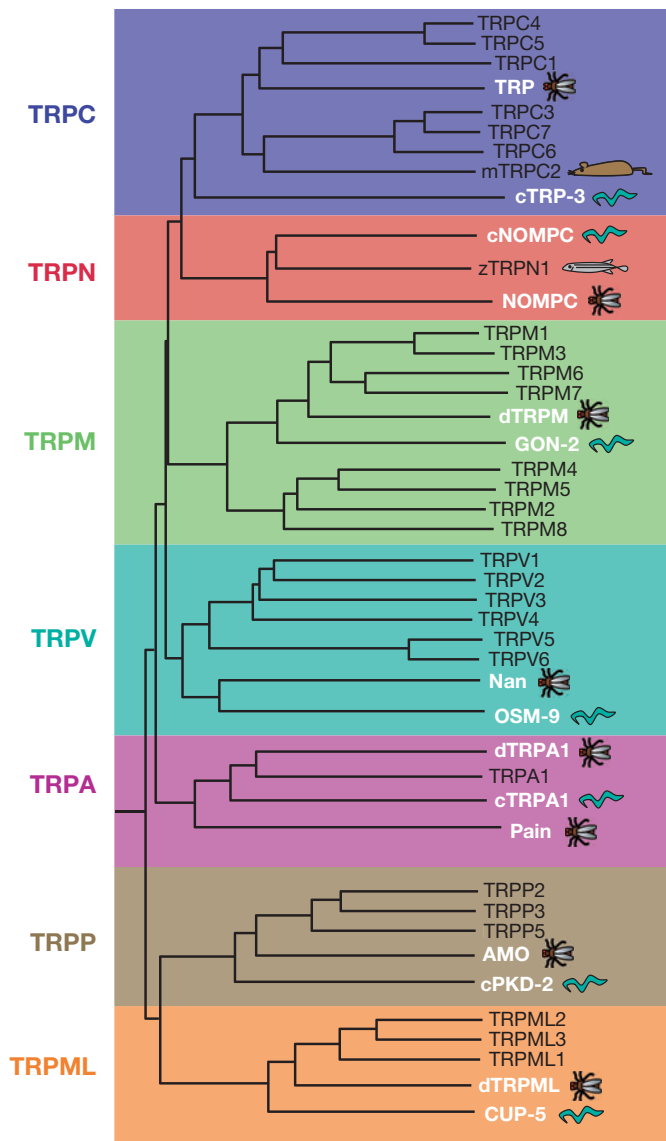
**PIP<sub>2</sub>:** phosphoinositide-4,5-bisphosphate

**DAG:** diacylglycerol

**IP<sub>3</sub>:** inositol-1,4,5-trisphosphate

**PUFA:** polyunsaturated fatty acid

---



**Figure 3**

Phylogenetic tree showing the relatedness of the TRP proteins. The dendrogram of vertebrate TRPs includes mostly human TRPs, except for mouse TRPC2 (cartoon of a mouse) and zebrafish TRPN1 (cartoon of a zebrafish). White text and cartoons highlight the TRP proteins from worms and flies. One *C. elegans* and one *Drosophila* member of each subfamily are included.

spermatids, TRP-3 is situated in intracellular vesicles; however, during sperm activation, the channel translocates to the plasma membrane. This translocation is correlated with an increase in TRP-3 activity.

## Mammalian TRPCs

The first mammalian homologs of *Drosophila* TRPs identified were referred to as TRPC1, TRPC2, and TRPC3 (34, 35). Since then, seven mammalian TRPC proteins (TRPC1–7) have been described (36) (Figure 3, Table 1). However, humans express only six because human TRPC2 is a pseudogene (34). The seven mammalian homologs share  $\geq 30\%$  amino acid identity with each other and with the *Drosophila* TRPCs over the N-terminal 750–900 amino acids. Based on amino acid similarities, the mammalian TRPCs fall into four subsets: TRPC1, TRPC2, TRPC3/6/7, and TRPC4/5. Whereas some TRPCs (such as TRPC1) are broadly expressed (34, 35), others are enriched in the nervous system (Table 1).

All mammalian TRPCs require PLC for activation (1, and references therein). However, there is variability in their selectivities for  $\text{Ca}^{2+}$  versus other cations and in the mechanisms coupling PLC activity to channel stimulation. Several TRPC proteins may be activated by depletion of  $\text{Ca}^{2+}$  from internal stores, brought about by application of either  $\text{IP}_3$  or thapsigargin (listed in Reference 37) (Table 1). However, the dependence of exogenously expressed TRPC-channel activity on store depletion is controversial (1 and 37, and references therein).

One hypothesis regarding the relationship between the status of the  $\text{Ca}^{2+}$  stores and TRPC channel activity is that there is direct conformational coupling between TRPCs and ER  $\text{Ca}^{2+}$  release channels. Such a coupling mechanism would require close apposition between the ER and plasma membranes. Indeed, separation of the two membranes by pharmacological reorganization of the actin cytoskeleton into a cortical ring prevents the activation of exogenously expressed TRPC3 channels (38). However, modifying the actin cytoskeleton may also decrease channel activity by leading to their internalization (39). Although requirements for direct interactions between TRPCs and ER



**Table 1** Properties of vertebrate TRPC and TRPV proteins

Gene name	Chromosomal localization	Selectivity P <sub>Ca</sub> :P <sub>Na</sub>	Modulation of activity	Highest expression
<b>TRPC subfamily</b>				
<i>TRPC1</i>	3q22–q24	Nonselective	Store depletion, conformational coupling, mechanical stretch <sup>b</sup>	Heart, brain, testis, ovary, liver, spleen
<i>TRPC2<sup>a</sup></i>	7, 50.0 cM	2.7	Diacylglycerol (DAG)	VNO, testis
<i>TRPC3</i>	4q27	1.6	Store depletion, conformational coupling, DAG, exocytosis	Brain
<i>TRPC4</i>	13q13.1–q13.2	7	Store depletion (?), exocytosis	Brain, endothelia, adrenal gland, retina, testis
<i>TRPC5</i>	Xq23	9.5	Store depletion (?), sphingosine-1-phosphate, exocytosis	Brain
<i>TRPC6</i>	11q21–q22	5	Conformational coupling, DAG, PIP <sub>3</sub>	Lung, brain, placenta, ovary
<i>TRPC7</i>	5q31.2	1.9 <sup>c</sup> , 5 <sup>d</sup>	Store depletion, DAG	Eye, heart, lung
<b>TRPV subfamily</b>				
<i>TRPV1</i>	17p13.3	3.8 (heat), 9.6 (vanilloids)	Heat (43°C), vanilloids, anandamide, camphor, piperine (black pepper), allicin (garlic), ethanol, nicotine, proinflammatory cytokines, protons, PIP <sub>2</sub> , phosphorylation exocytosis	TG, DRG, neurons, urinary bladder, testis
<i>TRPV2</i>	17p11.2	3	Heat (52°C), osmotic cell swelling, exocytosis	DRG, spinal cord, brain, spleen, intestine
<i>TRPV3</i>	17p13.3	2.6	Warm (33–39°C); PUFAs; menthol; compounds from oregano, cloves, and thymes	TG, DRG, spinal cord, brain, keratinocytes, tongue
<i>TRPV4</i>	12q24.1	6	Warm (27–34°C), osmotic cell swelling, 5'6'-EET, exocytosis	DRG, kidney, lung, spleen, testis, heart, keratinocytes, heart, liver, endothelia
<i>TRPV5</i>	7q35	>100	Low intracellular Ca <sup>2+</sup> , hyperpolarization, exocytosis	Kidney, intestine, pancreas, placenta
<i>TRPV6</i>	7q33–q34	>100	Store depletion, exocytosis	Small intestine, pancreas, placenta

<sup>a</sup>Chromosomal localizations apply to human genes except *TRPC2*, which is a pseudogene in humans.

Therefore, the chromosomal localization of mouse *TRPC2* is provided.

<sup>b</sup>Abbreviations: Question mark depicts controversial results; DRG, dorsal root ganglia; PIP<sub>2</sub>, phosphoinositide-4,5-bisphosphate; PIP<sub>3</sub>, phosphatidylinositol 3,4,5-trisphosphate; PUFAs, polyunsaturated fatty acids; TG, trigeminal ganglia; VNO, vomeronasal organ.

<sup>c</sup>Spontaneous current.

<sup>d</sup>ATP-enhanced current.

Ca<sup>2+</sup> release channels (both IP<sub>3</sub> and ryanodine receptors) have been described (1 and 37, and references therein), TRPC channels are completely functional in DT40 avian B-lymphocytes in which all three IP<sub>3</sub>-receptor homologs are knocked out (40–42). However, a role for conformational coupling cannot be excluded because TRPC channel activation could be coupled to ryanodine

receptors in the absence of functional IP<sub>3</sub> receptors.

Several mammalian TRPCs are coupled to PLC activation owing to a requirement for DAG. When expressed exogenously, some TRPC channels are potently stimulated by DAG and its analogs (43) (**Table 1**). Supporting a role for DAG *in vivo*, native TRPC2 channels, which are expressed in the mouse

PKC: protein kinase C

vomerol nasal organ (VNO) (44), are activated exclusively by DAG, and not by IP<sub>3</sub> receptors, Ca<sup>2+</sup> stores, or the PUFA arachidonic acid (45). Furthermore, elimination of native TRPC6/7 channels in cultured cells prevents the development of DAG-dependent conductances (46, 47). At least one TRPC channel, TRPC1, is mechanically gated as it is activated by the development of tension across the lipid bilayer in reconstituted liposomes (48) in the absence of proteins.

The discrepancies with regard to the activation mechanisms of TRPC channels underscore the complications in arriving at conclusions based exclusively on heterologous expression studies. A native TRPC3-mediated conductance in primary pontine neurons from neonatal rat brains is activated through a pathway initiated by the neurotrophin brain-derived neurotrophic factor (BDNF) and the TrkB receptor (49). This native conductance ( $I_{BDNF}$ ) depends on PLC stimulation, an elevation of cytosolic Ca<sup>2+</sup>, and functional IP<sub>3</sub> receptors (49). Surprisingly,  $I_{BDNF}$  is not gated by DAG (49), raising the question as to why TRPC3 is activated by DAG when overexpressed in tissue culture cells. DAG is also required for protein kinase C (PKC)-mediated inactivation of TRPCs (42), and DAG activates native TRPC7 in DT40 cells only after PKC inhibition (50). Therefore, discrepancies in the observed contributions of DAG to TRPC activation may reflect distinct contributions of PKC-mediated inhibition in different cells. In addition, as described above, there is strong evidence that some native TRPC conductances are activated by DAG (45).

Agonist-mediated exocytosis of TRPCs also modulates the activity of the channels (1) (**Table 1**). Incorporation of TRPC4 and TRPC5 into the plasma membrane is promoted by stimulation of the epidermal growth factor (EGF) receptor. Activation of the EGF receptor augments insertion of TRPC4 through tyrosine phosphorylation of TRPC4 by Src, which in turn increases interaction with a scaffold protein, the Na<sup>+</sup>/H<sup>+</sup>

exchanger regulatory factor (NHERF) (51). EGF-induced translocation of TRPC5 occurs through a separate mechanism, involving phosphatidylinositol-3-kinase, the Rho GTPase Rac1, and phosphatidylinositol 4-phosphate 5-kinase (52). In the case of TRPC3, agonist-induced exocytosis involves direct interactions with the v-SNARE protein, vesicle-associated membrane protein 2 (53). Regulated translocation of TRPCs from internal vesicles raises the possibility that some TRPCs are constitutively active and contribute to cation influx by insertion into the plasma membrane (1).

### TRPV

TRPV proteins (**Figure 3**) share ~25% homology with the TRPC channels over a region spanning transmembrane domains 5 and 6 (1). The *C. elegans* OSM-9 and rat TRPV1 were the first TRPVs identified (54). The biophysical features of the OSM-9-dependent current have not been described, although PUFAs such as arachidonic acid induce both Ca<sup>2+</sup> transients and characteristic avoidance behaviors in the ASH neurons, which express OSM-9 and function in osmosensation, mechanosensation, and chemosensation (55). This arachidonic acid-induced Ca<sup>2+</sup> rise is not observed in *osm-9* mutants. Mutants with defects in PUFA biosynthesis show similar behavioral phenotypes, further suggesting that OSM-9 may be activated by PUFAs (55).

The first mammalian TRPV was identified by expression cloning in a search for channels activated by the inflammatory vanilloid compound capsaicin, which gives spicy foods their characteristic hot taste (56) (**Figure 3**, **Table 1**). In addition, TRPV1 is activated by heat ( $\geq 43^\circ\text{C}$ ) (56) and many other chemicals, which include an endocannabinoid, anandamide (57); the topical analgesic, camphor (58); and the pungent compounds present in black pepper (piperine) (59) and garlic (allicin) (60). TRPV1-mediated cation influx initiated by the application of noxious chemicals or heat is further enhanced by low pH



(56). In fact,  $\text{pH} \leq 5.9$ , characteristic of proalgesic tissue acidosis associated with injury, induces a shift in the thermal activation threshold of TRPV1 so that it can be activated at room temperature (1). Shifts in the activation threshold of TRPV1 and potentiation of capsaicin-mediated responses are also brought about by ethanol (61), nicotine (62), and proinflammatory cytokines (63). Furthermore, TRPV1 is potentiated by a decrease in  $\text{PIP}_2$  levels and PKC-mediated phosphorylation of the channel, both following PLC activation induced by proalgesic agents such as bradykinin and nerve growth factor (1). Therefore, TRPV1 is a multiple signal integrator capable of transducing signals evoked by several noxious stimuli (**Table 1**).

Activation by heat is also a feature of TRPV2, TRPV3, and TRPV4. TRPV2 is activated by noxious heat ( $\geq 52^\circ\text{C}$ ) but not by capsaicin or changes in pH (64). TRPV1 and TRPV2 are expressed in distinct dorsal root ganglia neurons of different sizes (64), maintaining the fidelity of signaling in response to different temperatures. TRPV3 and TRPV4 are activated at warm temperatures in the ranges of  $33\text{--}39^\circ\text{C}$  and  $27\text{--}34^\circ\text{C}$ , respectively (**Table 1**) (1).

TRPV2–4 are also polymodally activated and are capable of integrating various stimuli. TRPV2 function is upregulated by phosphatidylinositol-3-kinase activation (65) and hypotonicity-induced cell swelling (66). TRPV3 is activated in cultured cells by PLC stimulation (67); by application of PUFAs such as arachidonic acid (68); by menthol (69); and by compounds present in spices such as oregano, cloves, and thymes (67) (**Table 1**).

In addition to warm temperatures, TRPV4 is activated by extracellular hypotonicity (1). The hypotonicity-induced activation of TRPV4 requires its interaction with the water channel aquaporin 5 (70). Chemicals such as anandamide and arachidonic acid activate TRPV4 via a mechanism involving cytochrome P450-dependent formation of epoxyeicosatrienoic acids (71). The different modes through which TRPV4 can be ac-

tivated do not occur through the same mechanism because a point mutation in the third transmembrane domain inhibits activation by heat but not by cell swelling or arachidonic acid (72) (**Table 1**).

Consistent with the theme that a change in osmolarity is an evolutionarily conserved mode for TRPV activation, the worm TRPVs (OSM-9 and OCR-2) are required for osmosensation, although it is unclear if they are activated directly or indirectly by changes in osmolarity. Nevertheless, both *Drosophila* TRPV proteins, Nanchung and Inactive, are activated by hypoosmolarity when expressed in a heterologous expression system (73, 74).

TRPV5 and TRPV6 are distinct from other TRPV channels in that they are not activated by heat and are the most  $\text{Ca}^{2+}$  selective ( $P_{\text{Ca}}:P_{\text{Na}} > 100$ ) of the mammalian TRPs (1) (**Table 1**). TRPV6 has been reported to have properties similar to a store-operated conductance known as  $\text{Ca}^{2+}$ -release-activated  $\text{Ca}^{2+}$  current or CRAC (75). Although the channels exhibit high  $\text{Ca}^{2+}$  selectivity, they are permeable to monovalent cations in the absence of extracellular  $\text{Ca}^{2+}$  (75). However, some biophysical properties of TRPV6 and CRAC have clear distinctions (76), and the involvement of  $\text{Ca}^{2+}$  stores in TRPV6 activation remains controversial.

Several TRPV channel activities are regulated by insertion or retention in the plasma membrane (**Table 1**). TRPV1 interacts with members of the SNARE-dependent exocytic pathway, and these interactions promote PKC-mediated translocation of TRPV1 to the plasma membrane (77). Furthermore, proalgesic factors such as nerve growth factor promote surface insertion of TRPV1 via Src kinase-mediated tyrosine phosphorylation of the channel (78). TRPV2 activity may also be regulated by channel insertion into the plasma membrane from internal vesicles, induced by the application of insulin-like growth factor-I in cultured cells (1). Glycosylation in the pore loop (79) and interactions with proteins called PACSINs (involved in synaptic vesicle trafficking) (80) regulate the surface expression

of TRPV4. Insertion of TRPV5 and TRPV6 into the plasma membrane regulates their activity as well (81). Retention of TRPV5 in the plasma membrane is promoted by the  $\beta$ -glucuronidase Klotho through hydrolysis of extracellular sugar residues on the channel (82).

## TRPM

The mammalian TRPM subfamily consists of eight members (**Figure 3**), which share  $\sim 20\%$  amino acid identities to TRPC channels over the C-terminal five transmembrane domains (1). Similar to TRPCs, TRPM proteins have a TRP domain C-terminal to the transmembrane segments (**Figure 2**). The total amino acid lengths ( $\sim 1000$ – $2000$ ) and sequences of the C-terminal regions of these proteins vary considerably. Based on similarities in amino acid sequences, these proteins fall into subsets consisting of TRPM1/3, TRPM4/5, and TRPM6/7 (**Figure 3**). TRPM2 and TRPM8 are not placed in any subset, although they are most closely related to each other. TRPM2 and TRPM6/7 are unusual in that they are chanzymes, with C-terminal enzyme domains.

The first mammalian TRPM identified, TRPM1, was initially named melastatin, as its expression levels correlated inversely with the metastatic potential in some melanomic cell lines (83). In addition to the full-length clone (TRPM1-L), a short variant of TRPM1 (TRPM1-S), which is devoid of transmembrane domains, interacts with TRPM1-L and inhibits its translocation to the plasma membrane (84) (**Table 2**).

TRPM3 forms a constitutively active  $\text{Ca}^{2+}$  and  $\text{Mn}^{2+}$  permeable channel when expressed exogenously in cultured cells (85). The spontaneous TRPM3 currents are enhanced by hypotonic extracellular solutions and cell swelling (85) (**Table 2**). Alternatively, TRPM3 might be activated by store depletion (86) or sphingolipids (87). TRPM3 also has multiple splice variants with distinct ion selectivities (88).

TRPM4 and TRPM5 are unusual among the TRP superfamily in that they are voltage-modulated,  $\text{Ca}^{2+}$ -activated, monovalent cation selective channels (VCAMs) (89–93) (**Table 2**). The monovalent selectivity, which sets these channels apart from other TRP channels, is dictated by a short acidic stretch of six amino acids in its pore loop (94). TRPM4 is expressed as two splice variants (84, 90), one of which (TRPM4b) is a VCAM (89, 93), whereas the other (TRPM4a) displays little discernible activity (84, 89, 90). The voltage dependence of TRPM4b and TRPM5 ensures the modulation of both activation and inactivation by changes in membrane potentials (91–93). The lack of  $\text{Ca}^{2+}$  permeability,  $\text{Ca}^{2+}$  activation, and voltage modulation suggests that the activities of VCAMs could be affected by the activity of voltage-gated  $\text{Ca}^{2+}$  channels. In turn, VCAM activation would decrease the membrane potential and the driving force for  $\text{Ca}^{2+}$  through other channels (90).

TRPM4b and TRPM5, similar to many other TRP channels, are modulated by  $\text{PIP}_2$ , with  $\text{PIP}_2$  reversing the  $\text{Ca}^{2+}$ -dependent desensitization of the channels and thereby increasing channel activity (91, 95, 96) (**Table 2**). TRPM5 is also temperature sensitive and activated by heat in the range of  $15$ – $35^\circ\text{C}$  (97) (**Table 2**). Thus TRPM5 is another example of a TRP channel that integrates thermal input with other modes of activation.

The TRPM6 and TRPM7 channels have unusual architectures as they are chanzymes with C-terminal atypical protein kinase domains (13, 14, 98, 99). TRPM7 is a divalent-specific cation channel, which is permeable to virtually all physiological divalent cations including  $\text{Mg}^{2+}$  and trace metals such as  $\text{Ni}^{2+}$  (100). It is a  $\text{Mg}^{2+}$ -inhibited channel, and because it fluxes  $\text{Mg}^{2+}$  (99), inhibition by  $\text{Mg}^{2+}$  provides an effective mode of feedback regulation. The TRPM6 chanzyme is also permeable to trace metals,  $\text{Mg}^{2+}$ , and  $\text{Ca}^{2+}$  and is inhibited by intracellular  $\text{Mg}^{2+}$  (101) (**Table 2**).

**Table 2** Properties of vertebrate TRPM, TRPA, and TRPN proteins

Gene name	Chromosomal localization <sup>a</sup>	Selectivity P <sub>Ca</sub> :P <sub>Na</sub>	Modulation of activity	Highest expression
<b>TRPM subfamily</b>				
<i>TRPM1</i>	15q13–q14	Nonselective	Translocation (?) <sup>b</sup>	Brain, melanosomes
<i>TRPM2</i>	21q22.3	~0.3	ADP-ribose, cADP-ribose, pyrimidine nucleotides, arachidonic acid, NAD, H <sub>2</sub> O <sub>2</sub> , Ca <sup>2+</sup>	Brain, bone marrow, spleen
<i>TRPM3</i>	9q21.11	1.6	Osmotic cell swelling, store depletion (?)	Kidney, brain, pituitary
<i>TRPM4</i>	19q13.33	Monovalent cation selective	Ca <sup>2+</sup> , voltage modulated, PIP <sub>2</sub>	Prostate, colon, heart, kidney, testis
<i>TRPM5</i>	11p15.5	Monovalent cation selective	Ca <sup>2+</sup> , voltage modulated, PIP <sub>2</sub> , heat (15–35°C)	Intestine, liver, lung, taste cells
<i>TRPM6</i>	9q21.13	Divalent cation selective (Mg <sup>2+</sup> and Ca <sup>2+</sup> )	Mg <sup>2+</sup> inhibited, translocation	Kidney, small intestines
<i>TRPM7</i>	15q21	Divalent cation selective (Mg <sup>2+</sup> and Ca <sup>2+</sup> )	Mg <sup>2+</sup> inhibited, ATP, protons, phosphorylation, PIP <sub>2</sub>	Kidney, heart, pituitary, bone, adipose
<i>TRPM8</i>	2q37.2	3.3	Cool (23–28°C), menthol, icilin, pH modulated, PIP <sub>2</sub>	DRG, TG, prostate, liver
<b>TRPA and TRPN</b>				
<i>TRPA1</i>	8q13	0.8	Cold (17°C) (?), icilin, isothiocyanates (mustard oil, horseradish, and wasabi), allicin (garlic), cinnamaldehyde (cinnamon oil), acrolein (tear gas), cannabinoids, bradykinin, DAG, PUFAs, mechanically gated (?)	DRG, hair cells, ovary, spleen, testis
<i>zTRPN</i>	–	?	Mechanically gated (?)	Ear, eye

<sup>a</sup>All chromosomal localizations are of human proteins except for the zebrafish TRPN1 (*zTRPN1*) because TRPN1 proteins are absent in humans.

<sup>b</sup>Abbreviations: Question mark depicts controversial results; DAG, diacylglycerol; DRG, dorsal root ganglia; PIP<sub>2</sub>, phosphoinositide-4,5-bisphosphate; PUFAs, polyunsaturated fatty acids; TG, trigeminal ganglia.

TRPM7 activity is regulated by pH, ATP, lipids, and translocation. TRPM7 is upregulated tenfold following a decrease in extracellular pH to 4.0 from the physiological pH of 7.4 (102). Thus a portion of the TRPM7 pool may be situated in an acidic environment, such as acidic vesicles. ATP significantly increases TRPM7 currents (98); however, the basis for this effect is controversial. TRPM7 activity may be enhanced by ATP, forming MgATP, which decreases intracellular free Mg<sup>2+</sup> (99) (Table 2). Alternatively, the requirement for ATP might reflect consumption of ATP for PIP<sub>2</sub> generation because PIP<sub>2</sub> depletion causes a decrease in TRPM7 activity (103). Relatively rapid plasma membrane

insertion of TRPM7 (<2 min) is induced by physiologically relevant fluid flow, leading to an increase in activity (104). TRPM7 is expressed in a vascular smooth muscle cell line (104) and could be activated by blood flow in areas in which the endothelium lining blood vessels is breached.

The role of the kinase domain of TRPM7 is controversial. According to one study, mutations in the ATP-binding region of the kinase domain lead to markedly decreased channel function (98). Subsequently, it was reported that mutations in the kinase domain do not prevent channel activation, although they change the sensitivity of the channel to Mg<sup>2+</sup> inhibition (105). Nucleotide-mediated

inhibition of TRPM7 is dependent on the nucleotide-binding site in the kinase domain, which works in concert with a  $Mg^{2+}$ -binding site on TRPM7 outside of the kinase domain (106). The kinase domain also plays a role in trafficking or assembly of the channel (107).

TRPM2 is a chanzyme with a C-terminal ADP-ribose pyrophosphatase domain (NUDT9 homology domain) (108, 109). TRPM2 forms a  $Ca^{2+}$  permeable nonspecific cation channel that is activated by intracellular ADP-ribose, pyrimidine nucleotides, and NAD (108, 109) (Table 2). This channel forms a cellular redox sensor and is activated by peroxide or other agents that produce reactive oxygen and nitrogen species (110) (Table 2). This activation of TRPM2 by oxidative and nitrosative stress requires an intact ADP-ribose binding cleft in the NUDT9 domain of TRPM2 (111). Furthermore, cADP-ribose, arachidonic acid, and intracellular  $Ca^{2+}$  also positively modulate TRPM2 function (110, 112, 113) (Table 2). A shorter variant of TRPM2, which is missing the last four transmembrane domains and C terminus, acts as a dominant negative inhibitor of TRPM2 (114).

TRPM8 is a thermally regulated channel activated by moderately cool temperatures (<23–28°C) and by compounds that evoke a sensation of coolness, such as menthol, eucalyptol, and icilin (115, 116) (Table 2). Activation by cold and menthol can be separated because several mutations having a profound effect on activation by menthol have only minimal effects on activation by cool temperatures (117). These data indicate that the domains involved in activation by menthol and thermal input are distinct. In further support of this conclusion, modulation of TRPM8 activity by pH has differential effects on activation by icilin and cold versus menthol (118). The mechanism for thermal activation of TRPV1 and TRPM8 by hot and cool temperatures, respectively, appears to be similar (119, 120). These channels are voltage dependent, and their respective activation temperatures as well as ligands lead to shifts

in their voltage thresholds toward more physiological membrane potentials (119, 120).

TRPM8 activity is also regulated by  $PIP_2$  (121) (Table 2), as depletion of  $PIP_2$  reduces activity induced by menthol or thermal cool.  $PIP_2$ -mediated regulation of TRPM8 is reduced by mutations in basic residues in the TRP domain (122). Although these mutations affect the  $PIP_2$ -modulated responses to both menthol and cool (122), they lie close or adjacent to mutations identified in the screen for residues that specifically function in the menthol response (117).

### TRPA and TRPN

The first TRPA protein, human TRPA1, was identified in a screen for genes downregulated following oncogenic transformation of fibroblasts (123). TRPA1 is the only TRPA protein present in humans and other mammals (1) and was previously called ANKTM1 because the protein consists of many N-terminal ankyrin repeats. There are two and four TRPA proteins encoded in the *C. elegans* and *Drosophila* genomes, respectively (Figure 1c).

TRPA1 is chemically activated by the psychoactive component in marijuana, environmental irritants, and pungent compounds. These include ingredients present in wasabi, horseradish, and mustard oils (isothiocyanates); garlic (allicin); cinnamon oil (cinnamaldehyde); marijuana (tetrahydrocannabinol); and tear gas (acrolein) (60, 124–126). TRPA1 can also be activated by stimulation of the PLC pathway by bradykinin and by the subsequently produced metabolites DAG and PUFAs (125) (Table 2).

There is controversy as to whether TRPA1 is a thermally or mechanically gated channel. When exogenously expressed in cultured cells, TRPA1 has been reported as a noxious cold (<17°C) activated channel (125, 127) (Table 2). However, the cold activation of TRPA1 in both cultured cells (124) and TRPA1-deficient mice is controversial (126, 128). TRPA1 channels from mouse and

zebrafish have been suggested to be mechanically gated channels, and the multiple ankyrin repeats of TRPA1 may form a gating spring capable of transducing mechanical force and thereby facilitating channel opening (129, 130). However, analyses of TRPA1-deficient mice described below mitigate this possibility (126, 128).

Despite the controversy concerning TRPA1, three *Drosophila* TRPAs (dTRPA1, Pyrexia, and Painless) function in thermosensation. Although TRPA1 may be a cold thermosensor, *Drosophila* TRPA1 and Pyrexia are activated *in vitro* by warm ( $\geq 24$ – $27^\circ\text{C}$ ) and noxious ( $\geq 40^\circ\text{C}$ ) heat, respectively (131–133). Painless has not been functionally expressed *in vitro* but is predicted to be gated by noxious heat ( $\geq 38^\circ\text{C}$ ) and the isothiocyanates present in wasabi (134, 135).

The TRPN subfamily is so named based on the founding member, *Drosophila* NOMPC (136). Single TRPN members are present in worms, flies, and zebrafish, whereas mammals do not encode any TRPN homologs. These proteins have 29 ankyrin repeats situated in tandem N-terminal to the transmembrane domains. Based on the functional analyses described below, they are likely to be mechanically gated, possibly involving a gating spring comprised of the ankyrin repeats. Presently, there is a lack of functional information concerning TRPN's ability to form channels.

## TRPP

TRPP2 (polycystin-2 or PKD2) is the archetypal TRPP channel and was discovered as a protein disrupted in ADPKD (10). TRPP2 and other group 2 TRPs have very low sequence similarity with members of the group 1 branch of the TRP superfamily. The group 2 TRPs are also distinguished from the group 1 TRPs by a large loop between transmembrane domains one and two (**Figure 1b**). Nevertheless, TRPP2 and the related mammalian proteins, referred to as TRPP3 (polycystin-L, PKD2L1) and TRPP5 (PKD2L2), have six transmembrane segments

(1). Invertebrate TRPPs have been described in *C. elegans* (137), *Drosophila* (AMO) (138, 139), and the sea urchin (suPC2) (140). TRPPs might comprise the most primitive TRP subfamily, as microbial homologs of TRPP2 are found in yeast (6).

The transmembrane segments in TRPP2 have sequence homology with 6 of the 11 C-terminal transmembrane domains of another protein disrupted in ADPKD, referred to as TRPP1 (polycystin-1 or PKD1) (141). This protein, which includes a  $\sim 2500$ -amino acid extracellular domain, is also referred to as TRPP1, based on its sequence relatedness to TRPP2. TRPP2 binds to TRPP1, and this association induces the translocation of TRPP2 to the plasma membrane where it serves as a  $\text{Ca}^{2+}$  permeable nonselective cation channel (1) (**Table 3**). Translocation of TRPP2 to the primary cilia, where it is localized in many cells, requires a stretch of 15 amino acids on the N terminus of TRPP2 and is independent of TRPP1 (142). Chaperone-like factors can also induce translocation of TRPP2 to the plasma membrane from intracellular pools (143, 144). The TRPP1/TRPP2 complex may contribute to TRPP2 function at the plasma membrane because anti-TRPP1 antibodies can induce structural rearrangements leading to TRPP2 activation (145). Furthermore, the addition of a C-terminal fragment of TRPP1 enhances the channel activity of TRPP2 (146).

Activation of TRPP2 may occur through mechanical gating or via a transduction pathway initiated by growth factors. The presence of TRPP proteins on both motile and primary cilia could render them capable of sensing fluid flow, osmolarity, and mechanical stretch. Accordingly, TRPP1 and TRPP2 have been implicated in flow-induced  $\text{Ca}^{2+}$  elevation in cultured kidney cells (147) (**Table 3**). Furthermore, TRPP2-deficient embryos do not display the normal flow-induced intracellular  $\text{Ca}^{2+}$  elevation at nodal cilia (148). TRPP2 increases EGF-induced, PLC-dependent  $\text{Ca}^{2+}$  influx in cultured kidney epithelial cells (149). EGF activates TRPP2-dependent  $\text{Ca}^{2+}$  influx



**Table 3** Properties of vertebrate TRPP and TRPML proteins

Gene name	Chromosomal localization <sup>a</sup>	Selectivity P <sub>Ca</sub> :P <sub>Na</sub>	Modulation of activity	Highest expression
<i>TRPP2</i>	4q21–q23	Nonspecific	Ca <sup>2+</sup> , translocation, TRPP1, EGF, PIP <sub>2</sub> , fluid flow, actin cytoskeleton <sup>b</sup>	Widely expressed, kidney
<i>TRPP3</i>	10q24	4.3	Ca <sup>2+</sup>	Kidney, heart
<i>TRPP5</i>	5q31	–	–	Testis, heart
<i>TRPML1</i>	19p13.2–p13.3	Monovalent cation selective (?)	pH, Ca <sup>2+</sup> , proteolytic cleavage	Brain, heart, skeletal muscle
<i>TRPML2</i>	1p22	–	–	–
<i>TRPML3</i>	1p22.3	–	–	Cochlear hair cells <sup>c</sup>

<sup>a</sup>All chromosomal localizations are of human proteins.

<sup>b</sup>Abbreviations: Question mark depicts controversial results; EGF, epidermal growth factor; PIP<sub>2</sub>, phosphoinositide-4,5-bisphosphate.

<sup>c</sup>Localization performed in the mouse.

by lifting PIP<sub>2</sub>-induced inhibition of TRPP2 (149). Reconstitution of TRPP2 in lipid bilayers and exogenous expression in cultured cells lead to the development of a Ca<sup>2+</sup> permeable, nonselective cation channel with multiple conductance states that are inhibited by Ca<sup>2+</sup> and the diuretic amiloride (150) (Table 3). The channel activity of TRPP2 in lipid bilayers is enhanced by its interaction with  $\alpha$ -actinin, implicating a role for the actin cytoskeleton in the modulation of TRPP2 (151).

In addition to functioning as a cation influx channel, TRPP2 is also localized in the ER membrane where it is proposed to serve as a new type of Ca<sup>2+</sup> release channel (152). The *C. elegans* homolog of TRPP2 also appears to be a Ca<sup>2+</sup> release channel and modulates IP<sub>3</sub>- and ryanodine-mediated Ca<sup>2+</sup> release from intracellular stores (153). Localization of mammalian TRPP2 to the ER is mediated by the phosphofurin acidic cluster sorting protein-2 (PACS-2) interacting with an acidic cluster in the C terminus of TRPP2 (154). Another study reports that TRPP2 impacts Ca<sup>2+</sup> release by interacting with the IP<sub>3</sub> receptor, thereby modulating IP<sub>3</sub>-mediated Ca<sup>2+</sup> release (155). TRPP3 has been reported to be a voltage-modulated, Ca<sup>2+</sup>-activated nonselective cation channel (156). TRPP3 is also permeable to monovalent organic cations (157).

## TRPML

TRPML1 (mucolipin-1 or MCOLN1) is the founding member of the TRPML subfamily (7–9). Mutations in this protein are responsible for the lysosomal storage disorder mucopolipidosis IV, which is characterized by severe neurodegeneration. In addition to TRPML1, mammals encode two other closely related proteins referred to as TRPML2 and TRPML3 (Figure 3) (1). TRPML1 and TRPML2 have lysosomal targeting signals and reside in the lysosomal membrane (158–160). TRPML3 does not have such a targeting signal and resides predominantly in the ER membrane when expressed in cultured cells (158). The *C. elegans* and *Drosophila* genomes each encode one TRPML protein (Figure 1c).

TRPML1 is the only member of this subfamily shown to be a cation channel. When expressed in *Xenopus* oocytes, TRPML1 translocates to the plasma membrane upon elevations in intracellular Ca<sup>2+</sup> and is reported to form a nonselective Ca<sup>2+</sup> channel (161) (Table 3). Another study found that TRPML1 has multiple conductance states whose function is inhibited by a decrease in pH (162). However, the Ca<sup>2+</sup> permeability and pH regulation of TRPML1 are controversial. TRPML1 has been reported to be a monovalent cation permeable channel (160) that fluxes protons, thereby providing a proton leak pathway,



regulating intralysosomal pH (163). Indeed, the absence of TRPML1 leads to the acidification of the lysosomal lumen (163). Cleavage of TRPML1 by the lysosomal protease cathepsin B has been reported to inactivate the channel (160) (Table 3). Since cathepsin B is highly pH sensitive, this provides an elegant model for pH-mediated feedback regulation of TRPML function.

## HETEROMULTIMERIZATION AMONG TRP PROTEINS

A feature shared by many members of the TRP superfamily of proteins is that closely related TRP channels form heteromultimers. Heteromultimerization is an effective mode for modulating the function, subcellular localization, and biophysical properties of the interacting channels. In the *Drosophila* eye, TRP is tenfold more abundant than TRPL or TRP $\gamma$  and is present primarily as a homomultimer. However, TRPL appears to form obligatory heteromultimers, resulting in TRP/TRPL as well as TRPL/TRP $\gamma$  heteromultimers in vivo and when expressed exogenously in cultured cells (18, 20). Such heteromultimerization provides a mechanism for regulating the channel conductance as the biophysical properties of the heteromultimers are distinct from those of the homomultimers (18, 20).

Mammalian TRPC proteins also form heteromultimers. Heteromultimeric interactions tend to be favored between members that are closely related to each other (164, 165), although this is not a strict rule. TRPC1 is most related to TRPC4/TRPC5, and TRPC1 and TRPC5 have overlapping distribution in the hippocampus and form heteromultimeric channels when coexpressed in cultured cells (166). Interactions between TRPC1 and TRPC5 lead to the generation of novel conductances with biophysical properties distinct from those of TRPC1 and TRPC5 homomultimers (166). Furthermore, biochemical analyses have identified TRPC1, TRPC4, and TRPC5 heteromultimers in rat embryonic

brains, which form channels with novel conductances when expressed in vitro (167).

TRPC1 can coassemble with members of the TRPC3/6/7 subfamily as well (18, 167, 168). Native TRPC3 and TRPC6 interact with TRPC1 in the rat embryonic brain (167). Furthermore, a TRPC3-associated conductance in cultured cells requires coexpression of TRPC1 (167, 168). Evidence exists for multiple combinations of interactions between TRPC1, TRPC3/6, and TRPC4/5 (167). Such combinations between different TRP proteins could generate an incredible diversity of channels with an array of distinct biophysical properties and biological functions.

Members of other TRP subfamilies also form heteromultimers. The *C. elegans* TRPV proteins OSM-9 and OCR-2 may interact in vivo, as each is required for the localization of the other in the sensory cilia (169). Similar interactions might also exist between the *Drosophila* TRPV proteins, Nanchung and Inactive, as elimination of one of the two proteins in vivo results in instability of the other protein (73). TRPV5 and TRPV6 form heteromultimers (81). TRPM6 and TRPM7 also coassemble, and this interaction is required for the generation of a novel conductance larger than that of either homomultimer and also for the insertion of TRPM6 into the plasma membrane (170). Heteromultimerization-induced trafficking of TRPM6 to the plasma membrane is of particular significance because mutations that disrupt the interactions between TRPM6 and TRPM7 prevent TRPM6 from reaching the plasma membrane, leading to hypomagnesemia and hypocalcemia (170).

Heteromultimeric interactions among group 2 TRPs can also effect subcellular distributions of the channels. The C terminus of TRPP1 interacts with the C terminus of TRPP2, and as mentioned above, this interaction drives the translocation of TRPP2 from intracellular compartments to the plasma membrane (1). The other group 2 TRP channel, TRPML1, interacts strongly with the closely related protein TRPML3

---

**INAD:** inactivation  
no after potential D

---

and induces the translocation of the latter to the lysosomes, which appears to be the ultimate destination for the TRPML proteins (158).

## **SUPRAMOLECULAR COMPLEXES**

Several TRP proteins associate with scaffold proteins, which link the channels to large macromolecular assemblies. A key function of such complexes is to control the subcellular distribution of the associated TRP channels.

### **The *Drosophila* Signalplex**

The first evidence for a TRP-containing signaling complex (signalplex) was demonstrated in *Drosophila* photoreceptor cells (23). The molecular scaffold, which nucleates the complex, is Inactivation No After Potential D (INAD), a protein consisting largely of five PDZ protein-protein interaction modules. Homomeric interactions between individual INAD molecules further increase INAD's capacity to simultaneously bind multiple target proteins in the signalplex (23). The signalplex includes two types of proteins: core and noncore. The core complex consists of four proteins—INAD, TRP, PLC (NORPA), and PKC—which are present at similar concentrations and are most likely constitutively bound to INAD (23). Additional noncore INAD binding proteins are TRPL, rhodopsin, calmodulin, myosin III (NINAC), and the immunophilin FKBP59 (23). These noncore proteins are not present in stoichiometric concentrations with INAD and may interact transiently with INAD.

A primary function of the signalplex is to retain the proteins that comprise the core complex in the light-sensitive microvillar structures of the photoreceptor cells, the rhabdomeres (15). Components of the phototransduction cascade are enriched in the rhabdomeres, and mutations in the gene encoding INAD disrupt the rhabdomere localization of TRP, PLC, and PKC (23). The interac-

tion with INAD is required for the retention rather than the targeting of these proteins to the signalplex (171, 172). Furthermore, TRP, PLC, and PKC are unstable when they are not retained in the signalplex owing to a lack of interactions with INAD (23). This has important physiological consequences because altered stoichiometries of these signaling molecules reduce the overall amplitude and affect the termination kinetics of the photoresponse.

There is a reciprocal requirement between INAD and TRP for retention in the rhabdomeres. In addition to the dependence on INAD for the localization of TRP, the retention of INAD in the rhabdomeres requires binding to TRP. Thus TRP has an additional role as an anchoring protein (171, 172).

It might appear intuitive that the primary function of nucleating the key components of the phototransduction cascade in the signalplex is to facilitate fast signaling. This is a particularly attractive hypothesis because cation influx takes place within milliseconds of initiation of the phototransduction cascade. However, a direct association between TRP and INAD is not required for rapid activation because elimination of the TRP-INAD interaction by mutating the INAD-binding site in TRP does not affect the photoresponse (171). The mutated TRP could still interact with the signalplex indirectly via interactions with other INAD binding proteins. Nevertheless, the signalplex does play a signaling role because disruption of the myosin III (NINAC)/INAD interaction causes a profound delay in response termination. This defect results from signaling because noncore INAD binding proteins, such as the myosin III (NINAC), do not depend on INAD for normal stability or localization in the rhabdomeres (23).

### **Mammalian TRP-Containing Signaling Complexes**

Mammalian TRP channels also appear to be assembled into macromolecular complexes.

Native TRPC3 in rat pontine neurons associates *in vivo* with the BDNF receptor TrkB (49). Other members of the TRPC3/TrkB complex have not been defined. TRPC1 localizes to cholesterol-enriched lipid raft domains, caveolae, where it appears to associate with the IP<sub>3</sub> receptor and G $\alpha$ q (173). Disruption of caveolae by cholesterol depletion prevents Ca<sup>2+</sup> influx (173). Although this is only indirect evidence for the involvement of a macromolecular complex with TRPC1 for Ca<sup>2+</sup> entry, it suggests that disruption of specific membrane domains such as lipid rafts, which may harbor TRP-containing macromolecular complexes, prevents Ca<sup>2+</sup> entry.

Mammalian TRPC4 may associate with a macromolecular complex that includes the double-PDZ-domain-containing protein NHERF (or EBP50) (1). Interaction between TRPC4 and NHERF is required for the translocation of the channel to the plasma membrane (1). Furthermore, NHERF can multimerize, allowing it to cluster additional proteins. Known NHERF binding proteins include PLC and the G protein-coupled  $\beta$ -adrenergic receptor (1).

In addition to PDZ-domain-containing proteins, components involved in TRP signaling also interact with different isoforms of another scaffold protein referred to as Homer. TRPC1 binds to Homer in the brain and localizes it to a complex that contains IP<sub>3</sub> receptors and group 1 metabotropic glutamate receptors (mGluR1) (174). The significance of such a complex tethered by Homer is underscored by the involvement of native TRPC1 channels in the development of mGluR1-induced conductances in Purkinje neurons (175). Furthermore, Homer 1b exists in a complex with TRPC3 and IP<sub>3</sub> receptors and mediates both TRPC3 trafficking and gating by IP<sub>3</sub> receptors (176).

## FUNCTIONS OF TRPs

The TRP superfamily of channels participates in a diversity of functions in both excitable and nonexcitable cells. However, a recurring

theme is that TRP channels have critical roles in sensory physiology. These include sensory roles in the broadest sense. TRP channels are not only essential in allowing animals to sense the outside world, but also allow individual cells to sense their local environment.

### Sensing the Outside World

TRP channels play critical roles in sensory modalities, such as touch, hearing, taste, olfaction, vision, and thermal sensation, in animals ranging from worms to flies, mice, and humans.

**Chemosensation.** Genetic analyses of the *C. elegans osm-9* gene, which encodes one of the two archetypal TRPV proteins, provided the first evidence that TRP channels participate in chemosensation (54). Mutations in *osm-9* (as well as in another TRPV gene, *ocr-2*) cause defects in the response to odorants (54, 169). Given that both *osm-9* and *ocr-2* are expressed in neurons that sense odorants, it is likely they are involved in olfactory transduction. In addition, the OSM-9 and OCR-2 proteins are required for multiple sensory modalities, including nociception and osmosensation (see below).

Several mammalian TRP channels are required for chemosensation, one of which (TRPM5) is a taste transduction channel (177, 178). TRPM5 is broadly required for the taste modality as the responses to sweet, bitter, and amino acids are greatly reduced, if not eliminated, owing to knockout of the mouse *TRPM5* gene (97, 178).

TRPC2 functions in the pheromone response, which in mammals is mediated through the VNO. TRPC2 is expressed in the VNO (44), and TRPC2-deficient male mice display intriguing behavioral phenotypes (179, 180). These include a failure to show aggression toward intruding males and a propensity to mate with either males or females. It is noteworthy that *TRPC2* is a pseudogene in humans (34), and the VNO is generally thought to be a vestigial organ. In

addition to TRPM5 and TRPC2, thermoTRPs contribute to the perception of chemical stimuli and, therefore, function in chemosensation (see below).

**Thermosensation and nociception.** Multiple mammalian TRP channels are activated by temperature changes and account for a large proportion of the temperature range to which mammals respond. As described above, TRPV1 and TRPV2 are sensors for uncomfortably warm ( $>43^{\circ}\text{C}$ ) (56) and very hot ( $>52^{\circ}\text{C}$ ) (64) temperatures, respectively, whereas TRPV3 ( $>30\text{--}39^{\circ}\text{C}$ ) (181–183) and TRPV4 ( $\sim 25\text{--}34^{\circ}\text{C}$ ) (184, 185) contribute to the perception of moderate temperatures. TRPM8 appears to function in our perception of cool temperatures (115, 116), and TRPA1 may be a cold sensor (127, 128); however, this latter conclusion is controversial (124, 126). Although the thermoTRPs are expressed in neurons such as those in the dorsal root or trigeminal ganglia, which are known to function in thermosensation, TRPV3 and TRPV4 are also expressed in skin keratinocytes (181, 184). These channels appear to be heat activated in these skin cells (181, 186, 187), although the mechanism through which temperature stimulation of keratinocytes contributes to thermosensation remains a matter of speculation (reviewed in 188). One possibility is that the activated keratinocytes release a factor, such as ATP, which activates an ATP-gated channel in the sensory neurons that innervate the skin (188).

The requirements for TRPV1, TRPV3, and TRPV4 in thermosensation have been confirmed in knockout mice. TRPV1-deficient mice do not display a response to noxious heat until the temperature is increased to  $\sim 55^{\circ}\text{C}$  (189, 190). Mice missing TRPV3 exhibit a thermal preference defect in a temperature range consistent with the biophysical analyses. When given a choice between  $35^{\circ}\text{C}$  and room temperature, wild-type animals have a strong bias to occupy the  $35^{\circ}\text{C}$  zone, whereas the TRPV3-knockout mice display only a slight preference for the higher

temperature (191). TRPV4<sup>-/-</sup> mutant mice also show a variety of behavioral phenotypes, including an inability to discriminate between  $30$  and  $34^{\circ}\text{C}$  (192, 193).

There are two reports describing TRPA1-deficient mice, and whether these mice are defective in the cold-temperature detection remains controversial. According to one study, TRPA1<sup>-/-</sup> mice do not show impairment in temperature sensitivity (126), whereas a second study reports a defect in paw withdrawal from a cold ( $0^{\circ}\text{C}$ ) surface (128). It is unclear whether these differences result from slightly different behavioral paradigms, genetic backgrounds, or the production of truncated versions of TRPA1, which in turn could affect other channels.

Despite the controversy concerning the thermosensory role of TRPA1, all three *Drosophila* TRPs known to function in thermosensation are TRPA proteins. The *Drosophila* homolog of the mammalian TRPA1, dTRPA1, has a role in thermotaxis. When given a choice between two temperature zones,  $27\text{--}31^{\circ}\text{C}$  and  $35\text{--}41^{\circ}\text{C}$ , wild-type larvae choose the cooler zone. Reduction of dTRPA1 expression, using small interfering RNAs (siRNAs), eliminates this preference (133). Whereas mammalian TRPA1 may be a cold sensor (127), dTRPA1 is necessary for detecting warm temperatures (132, 133). Painless, the first invertebrate thermoTRP identified, is required for the avoidance response in larvae to noxious heat ( $>39\text{--}41^{\circ}\text{C}$ ) (134). Another TRPA protein, Pyrexia, is necessary for flies to withstand several minutes of exposure to warm temperatures, such as  $40^{\circ}\text{C}$ , without becoming paralyzed (131).

**ThermoTRPs are also required for the response to chemical stimuli.** A shared feature of mammalian thermoTRPs is that they respond to chemical stimuli. This property was initially found for TRPV1, providing a molecular explanation for the long-known observation that certain compounds, such as capsaicin, elicit the same sensation as thermal heat (56). In addition to displaying impaired

responses to heat and vanilloid compounds, *TRPV1*<sup>-/-</sup> mice are deficient in their reaction to protons and display minimal thermal hyperalgesia (189, 190), which is enhanced by proalgesic agents produced at the site of injury. Thus TRPV1 is a molecular integrator for noxious thermal and chemical stimuli. Although a role for TRPA1 as a cold sensor is still a matter of debate, there is agreement that *TRPA1*<sup>-/-</sup> animals are deficient in their response to chemical irritants, such as mustard oils (126, 128). The *Drosophila* TRPA Painless is also required for the avoidance of isothiocyanate, which is the pungent compound in wasabi and mustard oils (135).

Thermal and chemical stimuli both affect TRPM5 activity (97, 177, 178), and this convergence has fascinating effects on the response to sweet tastants. Stimulation of the chorda tympani nerve with sugars is normally increased by temperatures over the range of 15–35°C. However, the residual sugar response in *TRPM5*<sup>-/-</sup> mice is not augmented by temperature (97). Thus TRPM5 appears to be required for the enhanced perception of sweetness at higher temperatures.

**Mechanosensation.** At least one thermoTRP functions in mechanosensation. TRPV4 is activated in vitro by hypotonicity (194), and *TRPV4*<sup>-/-</sup> mice display defects in osmotic regulation (195). The role of TRPVs in osmosensation is conserved, as the *C. elegans* TRPVs OSM-9 and OCR-2 are required for the avoidance of high osmolarity and mechanical stimuli, in addition to functioning in chemosensation. Rat TRPV4 restores normal avoidance to hypoosmotic and mechanical stimuli in *osm-9* mutant worms, when it is expressed in those neurons (ASH) that normally express *osm-9* and function in these modalities (196). A conundrum is that TRPV4 is activated in vitro by hypo- rather than hypertonicity. A role for TRPs in osmosensation also occurs in yeast, as TRPY proteins function in the release of Ca<sup>2+</sup> from vacuoles in response to hyperosmotic conditions (2, 3).

The identity of an auditory transduction channel in mammals is not resolved. Such a channel is predicted to be expressed at the tip of the stereocilia in hair cells of the inner ear, where mechanical force mediated through the gating spring is thought to open the channels. TRPA1 was a candidate auditory transduction channel as it is situated at the tips of the stereocilia, and the reduction of TRPA1 expression in zebrafish and in the mouse using morpholinos and siRNAs, respectively, reduced sound-evoked potentials (129). However, the auditory response is normal in *TRPA1*<sup>-/-</sup> mice (126, 128). It has been suggested that TRPA1 may be a hair-cell transduction channel only during early development because the morpholino and siRNA analyses were performed in early stage zebrafish and embryonic mice, whereas the response in the knockout animals was analyzed in postnatal mice (128).

Two mammalian TRP channels function in the auditory response; however, based on the expression pattern of the channels and/or the phenotypes of the mutant animals, neither appears to be a transduction channel. Mice with severe mutations in *TRPML3* exhibit a variety of phenotypes, including progressive disorganization of the inner and outer hair cell bundles (197). *TRPML3* is expressed in vesicles throughout the hair-cell bodies, leading to the speculation that it functions in vesicular or intracellular ion homeostasis in hair cells (197). The auditory response is normal in young *TRPV4*<sup>-/-</sup> mice; however, in older mutant mice, there is severe auditory impairment (198). *TRPN1* is suggested to be a mechanotransduction channel in the zebrafish because *TRPN1* RNA is expressed in hair cells, and the reduction in *TRPN1* expression in larvae using morpholinos reduces sound-evoked potentials (199). In the frog the *TRPN1* protein does not appear to be the transduction channel because it is not situated in the stereocilia but instead in a motile cilium in the hair cells (200).

The founding TRPN protein, *Drosophila* NOMPC (136), and two *Drosophila* TRPV proteins (Nanchung and Inactive) are



required for auditory sensitivity (73, 74, 201). In wild-type animals, amplification of auditory signals is nonlinear. Small signals are more greatly amplified through mechanical feedback vibrations in the mechanosensory cells in the antenna. However, *nompC* mutant flies show linear amplification at all levels of sound stimuli (201). The converse is observed in the *nanchung* and *inactive* mutants, both of which exhibit profound defects in hearing (73, 74) as a result of excessive amplification at the lower sound intensities (201). Since the mechanotransduction channel is expected to be required for feedback and amplification, it has been proposed that NOMPC is an auditory transduction channel (201). There must be at least one additional such channel, given that the *nompC* mutation does not abolish the auditory response.

The proposal that *Drosophila* NOMPC protein is an auditory transduction channel is consistent with the initial report that it is a mechanotransduction channel required for touch (136). The *nompC* gene is expressed in mechanosensory organs, and the mechanoreceptor currents generated in wild-type animals in response to deflection of the sensory bristles are absent in *nompC* flies. The mutant animals show behavioral phenotypes—they are uncoordinated and insensitive to a light touch. The *Drosophila trpA* gene *painless* is dispensable for the normal response to a light touch but functions in the avoidance response to noxious mechanical stimuli (134). The worm NOMPC homolog TRP-4 is a stretch-sensitive channel, and mutations in *trp-4* cause locomotor defects (202).

**Phototransduction.** Given that phototransduction in mammalian rods and cones operates through closure of a cGMP-gated channel, it is curious that *Drosophila* phototransduction utilizes TRP channels. Recent studies suggest that TRP channels may function in a small subset of mammalian retinal ganglion cells, which are photosensitive (pRGCs) and contribute to circadian rhythm (reviewed in 203). These pRGCs utilize a

phototransduction cascade that bears intriguing similarities to *Drosophila* phototransduction. The cascade initiates with light activation of an opsin, melanopsin, and culminates with depolarization of the cells. Heterologous expression studies indicate that light activation of melanopsin operates through a PLC and TRPC3 (204–206); however, it is unclear which TRP channel is coupled to the light-activated cascade in the pRGCs. Nevertheless, the cascades functioning in pRGCs and *Drosophila* photoreceptor cells appear to have a common origin.

### Sensing the Local Cellular Environment

In addition to sensing stimuli from the external environment, TRP channels enable cells to respond to cues in their local environment.

#### TRPC channels in growth cone guidance, neurite outgrowth, and synaptic activity.

TRP channels play roles during neurite outgrowth and growth cone guidance in the developing nervous system. Among the known guidance cues are netrins and BDNF, which exert either attractive or repulsive effects on growth cones through the induction of  $Ca^{2+}$  influx. TRPC3 was a candidate for regulation of growth cone guidance by BDNF because it is activated in the developing mammalian brain by BDNF (49). In support of this possibility, knockdown of TRPC3 expression with siRNAs inhibits BDNF-induced turning of growth cones in cultured cerebellar granule cells (207). Similarly, reduction in expression of the *Xenopus* TRPC1 using morpholinos interferes with growth cone turning in response to either netrin-1 or BDNF (208, 209). Another TRP channel, TRPC5, operates in neurite extension, as exposure of hippocampal neurons to EGF promotes the plasma membrane insertion of TRPC5, which inhibits neurite outgrowth (210).

TRPC channels function postsynaptically in response to the activation of metabotropic receptors. Activation of metabotropic



serotonin receptors in the dendrites of thalamic interneurons leads to release of the neurotransmitter GABA ( $\gamma$ -aminobutyric acid) from the dendrites and local GABAergic inhibition. In neurons obtained from *TRPC4*<sup>-/-</sup> knockout animals, the dendritic release of GABA is greatly reduced in thalamic interneurons (211). In contrast to this inhibitory role, TRPC1 appears to underlie an excitatory postsynaptic current, following activation of metabotropic glutamate receptors in Purkinje cells, because manipulations that interfere with TRPC1 activity reduce the excitatory postsynaptic current (175).

**Vascular tone.** Influx of Ca<sup>2+</sup> into vascular endothelial cells causes the release of vasoactive agents, which in turn induces Ca<sup>2+</sup> influx in smooth muscle cells and affects vascular tone and blood pressure. Many TRP channels are expressed in the endothelium and have been implicated in endothelial function, although the strongest genetic evidence has been provided for TRPC4. Mice lacking TRPC4 are deficient for an IP<sub>3</sub>-induced Ca<sup>2+</sup> influx current and display greatly reduced vasorelaxation (212). Elimination of TRPC6 increases vascular smooth muscle contractility and blood pressure (213). Paradoxically, there is an increase in basal cation influx. This latter effect results from increased expression of TRPC3, which in the absence of TRPC6 shows constitutive activity. These latter results are consistent with the evidence that TRPC6 and TRPC3 form heteromultimers (43) and suggest that TRPC3 is constitutively active in the absence of TRPC6. This result is reminiscent of the suppression of constitutive activity of *Drosophila* TRPL, by interactions with TRP (18).

**Secretion of fluids and hormones.** TRP channels play important roles in the secretion of fluids, electrolytes, and hormones in vertebrates and invertebrates. In addition to functioning during phototransduction, TRPL is required for Ca<sup>2+</sup>-mediated fluid transport in a *Drosophila* epithelium (214). In mammals,

TRPC1 may play a role in fluid secretion as it is expressed in human salivary gland cells and its level of expression is correlated with Ca<sup>2+</sup> entry and fluid secretion in these cells (215).

Two TRPM channels are implicated in insulin secretion. TRPM4 is expressed in an insulin pancreatic  $\beta$ -cell line, and expression of a dominant negative form of this channel reduces glucose-induced insulin secretion (216). TRPM2 is also expressed in insulin-producing pancreatic  $\beta$ -cells, and TRPM2 siRNAs decrease insulin secretion (217). The activation of TRPM2 in these cells is proposed to require both cyclic ADP-ribose and 37°C because the channel is poorly activated by cyclic ADP-ribose at 25°C. Therefore, TRPM2 is an additional example of chemical and thermal inputs converging on a TRP channel.

**Kidney, urinary bladder, and bone function.** At least one TRP is required for urinary bladder function as mutations in *TRPV1* result in an increase in urinary bladder capacity and inefficient voiding (218). Urothelial cells from the *TRPV1*<sup>-/-</sup> animals show a defect in stretch-induced ATP release, which may underlie the bladder phenotype because purinergic signaling has been linked to bladder function. It is not known whether TRPV1 is a mechanosensitive channel or whether it is responding indirectly to membrane stretch.

Definitive evidence that TRP channels are required for renal function in humans is that mutations in TRP channels underlie kidney diseases (see the following section below). Elimination of mouse TRPV5 causes the animals to excrete high levels of Ca<sup>2+</sup> into the urine, owing to a defect in Ca<sup>2+</sup> reabsorption along the kidney's distal convolution, which is the site of TRPV5 expression (219). TRPV5 is also expressed in osteoclasts, and *TRPV5*<sup>-/-</sup> animals show a defect in transcellular Ca<sup>2+</sup> transport during osteoclastic bone resorption (220). The critical role for TRPV5 in these processes is consistent with the observation that TRPV5 and the highly related TRPV6

are the most  $\text{Ca}^{2+}$ -selective channels among the mammalian TRPs (1).

In the zebrafish, loss-of-function mutations in *TRPM7* result in dwarfism, skeletal abnormalities, kidney stone formation, melanophore development, and touch-response defects (221). In addition, there is mineralization in the mesonephric tubules and changes in ossification. *TRPM7* is permeable to  $\text{Mg}^{2+}$  and  $\text{Ca}^{2+}$  (99), and supplementation with either  $\text{Mg}^{2+}$  or  $\text{Ca}^{2+}$  partially rescues the melanophore-development phenotype, whereas supplementation with  $\text{Ca}^{2+}$  partially restores the touch responsiveness. In certain cell types, *TRPM7* is essential for viability, as deletion of *TRPM7* in the chicken DT-40 cell line results in cell lethality (99). This phenotype results from a defect in  $\text{Mg}^{2+}$  homeostasis, as the addition of  $\text{Mg}^{2+}$  to the media rescues the lethality (105).

## TRP CHANNELS AND DISEASE

Four diseases have been shown to be caused by mutations in TRP channels, and preliminary data indicate that disruptions in TRP channels underlie many additional diseases. Uncontrolled activity of TRP channels may also have pathological consequences and cause neurodegeneration due to oxidative stress.

### Hypomagnesemia and Hypocalcemia Owing to Mutations in *TRPM6*

TRPM proteins are critical for  $\text{Mg}^{2+}$  uptake in organisms ranging from worms to humans. *TRPM6* is expressed in the intestinal brush border and in the renal convoluted tubule, where it is required for  $\text{Mg}^{2+}$  absorption (101). Of particular significance, mutations in the *TRPM6* channel result in hypomagnesemia with secondary hypocalcemia (13, 14).

A role for TRPM proteins in  $\text{Mg}^{2+}$  homeostasis is evolutionarily conserved. Two of the four *trpm* genes in worms are expressed in the intestines, and the inability of *gon-2;glt-1* mutants to reach adulthood is suppressed by

$\text{Mg}^{2+}$  supplementation (222). Furthermore, the *gon-2;glt-1* animals display increased tolerance to  $\text{Ni}^{2+}$  toxicity (222), reminiscent of the findings that *TRPM7* is permeable to  $\text{Ni}^{2+}$  and other trace metals (99).

### TRPC6, Podocyte Function, and Kidney Disease

Mutations in *TRPC6* cause one type of kidney disorder, focal and segmental glomerulosclerosis (FSGS), which is characterized by a breach in the capillary/kidney permeability barrier and progression to end-stage renal disease (11, 12). A critical structure contributing to the filtration system in the kidney glomerulus is the series of interdigitated foot processes extending from the podocytes and surrounding the capillaries. The slit diaphragm, situated between the foot processes, forms a multiprotein barrier that allows the passage of small molecules from the capillaries to the glomerulus. Disruption of this permeability barrier, due to mutation of *TRPC6*, can lead to proteinuria and end-stage renal disease. *TRPC6* has been proposed to be an essential channel in the slit diaphragm because it is localized in the foot processes, near the slit diaphragm, and directly interacts with two proteins, nephron and podocin, known to be situated in these regions. FSGS patients also display hypertension, which is a clinical manifestation consistent with higher blood pressure in the *TRPC6*-knockout mice (213). Whether older *TRPC6*<sup>-/-</sup> mice display kidney defects remains to be reported. The mechanism of *TRPC6* activation in the podocytes is also unresolved; given the mechanosensitivity of these cells, *TRPC6* may be mechanically gated in podocytes.

### TRPPs and Autosomal Dominant Polycystic Kidney Disease

ADPKD is the most common disease worldwide of monogenic origin and results from mutations either in the channel *TRPP2* or the

associated protein TRPP1 (reviewed in 223). The hallmark of this disorder is renal cysts and kidney failure, although this is a systemic disease, which can affect many tissues. The patients are heterozygous for the initial mutation in either TRPP1 or TRPP2, and the disease results from a somatic mutation in the second copy of the gene.

The normal functions of TRPP proteins remain poorly understood; however, a key insight is that the TRPP2 and TRPP1 tend to be localized in axonemal structures, such as monocilia (224). These cilia are small appendages that extend from most cells and are capable of sensing shear stress during fluid flow. TRPP2 is also expressed in the motile node cell monocilia (148, 225), which is critical in establishing left-right asymmetry during embryogenesis by generating fluid flow. Cells from *TRPP2*<sup>-/-</sup> embryos exhibit laterality defects and do not display the Ca<sup>2+</sup> rise in the node cilia, which is induced in wild-type embryos upon fluid flow over the cilia (148, 225). Thus TRPP2 may function as a mechanosensor, which detects the shear force resulting from fluid flow (147).

Specialized axonemal structures related to monocilia include mechanosensors, the outer segments of mammalian photoreceptor cells, and sperm. In support of an evolutionarily conserved role for TRPPs in axonemal structures, worm TRPPs are concentrated in sensory cilia and function in male sensory behavior (137). The *Drosophila* TRPP2 AMO is localized to the sperm tail (139) and is essential for entry in the female storage organs (138, 139).

### TRPML1 and Mucopolidosis Type IV

MLIV is a severe neurodegenerative disorder, which arises from mutations in TRPML1 (7–9). The clinical manifestations typically become evident by the time children are two to three years old of age and include neurodegeneration, mental retardation, achlorhydria, and retinal degeneration. MLIV is primarily a lysosomal storage disorder, and as is typical of

other lysosomal storage disorders, cells from patients with MLIV contain many large vesicles and accumulate lysosomal storage components, such as phospholipids, mucopolysaccharides, and gangliosides (226). There does not appear to be a defect in lysosomal enzymes, and the specific role for TRPML1 is not known. TRPML1 may be required for lysosomal reformation/biogenesis (227), and this model is supported by analyses of worms harboring a mutation in *cup-5*, the *C. elegans* homolog of *TRPML1* (228).

### Oxidative Stress, Constitutively Active TRPs, and Neuronal Cell Death

Hypoxia can lead to excessive Ca<sup>2+</sup> influx and cell death owing to Ca<sup>2+</sup> overload. Such a phenomenon is of particular importance in the brain, where oxidative stress leads to neuronal cell death following stroke and certain chronic neurodegenerative diseases. There is accumulating evidence that TRP channels contribute significantly to neuronal cell death under anoxic conditions, although the first demonstration that oxidative stress causes constitutive activity of a TRP was obtained for TRPC3 in aortic endothelial cells (229). *Drosophila* TRP and TRPL are activated in vivo following application of mitochondrial uncouplers (230), and mutations that cause constitutive activation of TRP result in massive photoreceptor cell death (231). Evidence that this death indeed results from Ca<sup>2+</sup> overload is that the retinal degeneration is suppressed by overexpression of the Na<sup>+</sup>/Ca<sup>2+</sup> exchanger (232).

Two mediators of hypoxia-induced neuronal cell death in the mammalian brain appear to be TRPM2 and TRPM7. Cells heterologously expressing TRPM2 display an increased susceptibility to cell death following exposure to reactive oxygen species (110). Moreover, inhibition of native TRPM2 expression in a rat insulinoma cell line and in cultured cortical neurons reduces H<sub>2</sub>O<sub>2</sub>-induced cell death (110, 233). Expression of a

naturally occurring truncated form of TRPM2 decreased the sensitivity to cell death owing to oxidative stress (114). In a related model for neuronal cell death induced by oxygen glucose deprivation, suppression of native TRPM7 expression inhibited cell death in cortical neuronal cultures (234).

The concept that TRP channels are activated under hypoxic conditions does not apply only to pathological conditions, such as during ischemia and in some chronic neurological diseases, but also most likely reflects a physiological role for TRP channels. In the worm, O<sub>2</sub> levels affect multiple behaviors, and two TRPV channels (OSM-9 and OCR-2) are required for the avoidance of high O<sub>2</sub> (235). The effects of O<sub>2</sub> on OSM-9 or OCR-2 activity are not known.

## FUTURE PERSPECTIVES

Based on an array of highly suggestive studies that are not reviewed here owing to space limitations, it is likely that many more diseases will be shown to result from mutations or changes in the activities of TRP channels. These include cardiovascular diseases, sensory deficits, abnormal sensitivities to pain, gastrointestinal diseases, additional renal and neurodegenerative diseases, certain cancers, asthma, and even psychiatric diseases. Consistent with this last possibility is the association of alterations in TRPM2 with bipolar disorder (236, 237). Finally, TRP channels are exciting targets for drug development. Inhibitors of TRP channels hold the potential for the control of pain, asthma, and neurodegenerative diseases, which are associated with increased activities of TRP channels.

## ACKNOWLEDGMENT

Work in the laboratory of C.M. is supported by the NEI, NIDCD, and the March of Dimes.

## LITERATURE CITED

1. Montell C. 2005. *Sci. STKE* 2005:re3
2. Palmer CP, Zhou XL, Lin J, Loukin SH, Kung C, Saimi Y. 2001. *Proc. Natl. Acad. Sci. USA* 98:7801–5
3. Denis V, Cyert MS. 2002. *J. Cell Biol.* 156:29–34
4. Montell C, Rubin GM. 1989. *Neuron* 2:1313–23
5. Montell C, Birnbaumer L, Flockerzi V. 2002. *Cell* 108:595–98
6. Palmer CP, Aydar E, Djamgoz MB. 2005. *Biochem. J.* 387:211–19
7. Sun M, Goldin E, Stahl S, Falardeau JL, Kennedy JC, et al. 2000. *Hum. Mol. Genet.* 9:2471–78
8. Bassi MT, Manzoni M, Monti E, Pizzo MT, Ballabio A, Borsani G. 2000. *Am. J. Hum. Genet.* 67:1110–20
9. Bargal R, Avidan N, Ben-Asher E, Olender Z, Zeigler M, et al. 2000. *Nat. Genet.* 26:118–23
10. Mochizuki T, Wu G, Hayashi T, Xenophontos SL, Veldhuisen B, et al. 1996. *Science* 272:1339–42
11. Winn MP, Conlon PJ, Lynn KL, Farrington MK, Creazzo T, et al. 2005. *Science* 308:1801–4
12. Reiser J, Polu KR, Moller CC, Kenlan P, Altintas MM, et al. 2005. *Nat. Genet.* 37:739–44
13. Walder RY, Landau D, Meyer P, Shalev H, Tsolia M, et al. 2002. *Nat. Genet.* 31:171–74
14. Schlingmann KP, Weber S, Peters M, Nejsun LN, Vitzthum H, et al. 2002. *Nat. Genet.* 31:166–70

15. Montell C. 1999. *Annu. Rev. Cell Dev. Biol.* 15:231–68
16. Hardie RC, Minke B. 1992. *Neuron* 8:643–51
17. Vaca L, Sinkins WG, Hu Y, Kunze DL, Schilling WP. 1994. *Am. J. Physiol. Cell Physiol.* 266:C1501–5
18. Xu XZ, Li HS, Guggino WB, Montell C. 1997. *Cell* 89:1155–64
19. Phillips AM, Bull A, Kelly LE. 1992. *Neuron* 8:631–42
20. Xu XZ, Chien F, Butler A, Salkoff L, Montell C. 2000. *Neuron* 26:647–57
21. Niemeyer BA, Suzuki E, Scott K, Jalink K, Zuker CS. 1996. *Cell* 85:651–59
22. Leung HT, Geng C, Pak WL. 2000. *J. Neurosci.* 20:6797–803
23. Montell C. 2005. *J. Physiol.* 567.1:45–51
24. Hardie RC, Raghu P. 1998. *Cell Calcium* 24:153–63
25. Ranganathan R, Bacskaï BJ, Tsein RY, Zuker CS. 1994. *Neuron* 13:837–48
26. Acharya JK, Jalink K, Hardy RW, Hartenstein V, Zuker CS. 1997. *Neuron* 18:881–87
27. Estacion M, Sinkins WG, Schilling WP. 2001. *J. Physiol.* 530:1–19
28. Chyb S, Raghu P, Hardie RC. 1999. *Nature* 397:255–59
29. Raghu P, Usher K, Jonas S, Chyb S, Polyanovsky A, Hardie RC. 2000. *Neuron* 26:169–79
30. Kwon Y, Montell C. 2006. *Curr. Biol.* 16:723–29
31. Garcia-Murillas I, Pettitt T, Macdonald E, Okkenhaug H, Georgiev P, et al. 2006. *Neuron* 49:533–46
32. Bähner M, Frechter S, Da Silva N, Minke B, Paulsen R, Huber A. 2002. *Neuron* 34:83–93
33. Xu XZ, Sternberg PW. 2003. *Cell* 114:285–97
34. Wes PD, Chevesich J, Jeromin A, Rosenberg C, Stetten G, Montell C. 1995. *Proc. Natl. Acad. Sci. USA* 92:9652–56
35. Zhu X, Chu PB, Peyton M, Birnbaumer L. 1995. *FEBS Lett.* 373:193–98
36. Montell C, Birnbaumer L, Flockerzi V, Bindels RJ, Bruford EA, et al. 2002. *Mol. Cell* 9:229–31
37. Venkatachalam K, van Rossum DB, Patterson RL, Ma HT, Gill DL. 2002. *Nat. Cell Biol.* 4:E263–72
38. Ma HT, Patterson RL, van Rossum DB, Birnbaumer L, Mikoshiba K, Gill DL. 2000. *Science* 287:1647–51
39. Lockwich T, Singh BB, Liu XB, Ambudkar IS. 2001. *J. Biol. Chem.* 276:42401–8
40. Vazquez G, Lievreumont JP, Bird GS, Putney JW Jr. 2001. *Proc. Natl. Acad. Sci. USA* 98:11777–82
41. Venkatachalam K, Ma HT, Ford DL, Gill DL. 2001. *J. Biol. Chem.* 276:33980–85
42. Venkatachalam K, Zheng F, Gill DL. 2003. *J. Biol. Chem.* 278:29031–40
43. Hofmann T, Obukhov AG, Schaefer M, Harteneck C, Gudermann T, Schultz G. 1999. *Nature* 397:259–63
44. Liman ER, Corey DP, Dulac C. 1999. *Proc. Natl. Acad. Sci. USA* 96:5791–96
45. Lucas P, Ukhanov K, Leinders-Zufall T, Zufall F. 2003. *Neuron* 40:551–61
46. Lievreumont JP, Numaga T, Vazquez G, Lemonnier L, Hara Y, et al. 2005. *J. Biol. Chem.* 280:35346–51
47. Soboloff J, Spassova M, Xu W, He LP, Cuesta N, Gill DL. 2005. *J. Biol. Chem.* 280:39786–94
48. Maroto R, Raso A, Wood TG, Kurosky A, Martinac B, Hamill OP. 2005. *Nat. Cell Biol.* 7:179–85
49. Li HS, Xu XZ, Montell C. 1999. *Neuron* 24:261–73
50. Vazquez G, Bird GS, Mori Y, Putney JW Jr. 2006. *J. Biol. Chem.* 281:25250–58
51. Odell AF, Scott JL, van Helden DF. 2005. *J. Biol. Chem.* 280:37974–87



52. Bezzerides V, Ramsey S, Greka A, Clapham DE. 2004. *Nat. Cell Biol.* 6:709–20
53. Singh BB, Lockwich TP, Bandyopadhyay BC, Liu X, Bollimuntha S, et al. 2004. *Mol. Cell* 15:635–46
54. Colbert HA, Smith TL, Bargmann CI. 1997. *J. Neurosci.* 17:8259–69
55. Kahn-Kirby AH, Dantzker JL, Apicella AJ, Schafer WR, Browse J, et al. 2004. *Cell* 119:889–900
56. Caterina MJ, Schumacher MA, Tominaga M, Rosen TA, Levine JD, Julius D. 1997. *Nature* 389:816–24
57. Zygmunt PM, Petersson J, Andersson DA, Chuang H, Sorgard M, et al. 1999. *Nature* 400:452–57
58. Xu H, Blair NT, Clapham DE. 2005. *J. Neurosci.* 25:8924–37
59. McNamara FN, Randall A, Gunthorpe MJ. 2005. *Br. J. Pharmacol.* 144:781–90
60. Macpherson LJ, Geierstanger BH, Viswanath V, Bandell M, Eid SR, et al. 2005. *Curr. Biol.* 15:929–34
61. Trevisani M, Smart D, Gunthorpe MJ, Tognetto M, Barbieri M, et al. 2002. *Nat. Neurosci.* 5:546–51
62. Liu L, Zhu W, Zhang ZS, Yang T, Grant A, et al. 2004. *J. Neurophysiol.* 91:1482–91
63. Zhang N, Inan S, Cowan A, Sun R, Wang JM, et al. 2005. *Proc. Natl. Acad. Sci. USA* 102:4536–41
64. Caterina MJ, Rosen TA, Tominaga M, Brake AJ, Julius D. 1999. *Nature* 398:436–41
65. Penna A, Juvin V, Chemin J, Compan V, Monet M, Rassendren FA. 2006. *Cell Calcium* 39:495–507
66. Muraki K, Iwata Y, Katanosaka Y, Ito T, Ohya S, et al. 2003. *Circ. Res.* 93:829–38
67. Xu H, Dellling M, Jun JC, Clapham DE. 2006. *Nat. Neurosci.* 9:628–35
68. Hu HZ, Xiao R, Wang C, Gao N, Colton CK, et al. 2006. *J. Cell. Physiol.* 208:201–12
69. Macpherson LJ, Hwang SW, Miyamoto T, Dubin AE, Patapoutian A, Story GM. 2006. *Mol. Cell. Neurosci.* 32:335–43
70. Liu X, Bandyopadhyay B, Nakamoto T, Singh B, Liedtke W, et al. 2006. *J. Biol. Chem.* 281:15485–95
71. Watanabe H, Vriens J, Prenen J, Droogmans G, Voets T, Nilius B. 2003. *Nature* 424:434–38
72. Vriens J, Watanabe H, Janssens A, Droogmans G, Voets T, Nilius B. 2004. *Proc. Natl. Acad. Sci. USA* 101:396–401
73. Gong ZF, Son WS, Chung YD, Kim JW, Shin DW, et al. 2004. *J. Neurosci.* 24:9059–66
74. Kim J, Chung YD, Park DY, Choi SK, Shin DW, et al. 2003. *Nature* 424:81–84
75. Yue LX, Peng JB, Hediger MA, Clapham DE. 2001. *Nature* 410:705–9
76. Voets T, Prenen J, Fleig A, Vennekens R, Watanabe H, et al. 2001. *J. Biol. Chem.* 276:47767–70
77. Morenilla-Palao C, Planells-Cases R, Garcia-Sanz N, Ferrer-Montiel A. 2004. *J. Biol. Chem.* 279:25665–72
78. Zhang XM, Huang JH, McNaughton PA. 2005. *EMBO J.* 24:4211–23
79. Xu HS, Fu Y, Tian W, Cohen DM. 2006. *Am. J. Physiol. Renal Physiol.* 290:F1103–9
80. Cuajungco MP, Grimm C, Oshima K, D’Hoedt D, Nilius B, et al. 2006. *J. Biol. Chem.* 281:18753–62
81. Hoenderop JG, Voets T, Hoefs S, Weidema F, Prenen J, et al. 2003. *EMBO J.* 22:776–85
82. Chang Q, Hoefs S, van der Kemp AW, Topala CN, Bindels RJ, Hoenderop JG. 2005. *Science* 310:490–93
83. Duncan LM, Deeds J, Hunter J, Shao J, Holmgren LM, et al. 1998. *Cancer Res.* 58:1515–20



84. Xu XZ, Moebius F, Gill DL, Montell C. 2001. *Proc. Natl. Acad. Sci. USA* 98:10692–97
85. Grimm C, Kraft R, Sauerbruch S, Schultz G, Harteneck C. 2003. *J. Biol. Chem.* 278:21493–501
86. Lee N, Chen J, Sun L, Wu SJ, Gray KR, et al. 2003. *J. Biol. Chem.* 278:20890–97
87. Grimm C, Kraft R, Schultz G, Harteneck C. 2005. *Mol. Pharmacol.* 67:798–805
88. Oberwinkler J, Lis A, Giehl KM, Flockerzi V, Philipp SE. 2005. *J. Biol. Chem.* 280:22540–48
89. Hofmann T, Chubanov V, Gudermann T, Montell C. 2003. *Curr. Biol.* 13:1153–58
90. Launay P, Fleig A, Perraud AL, Scharenberg AM, Penner R, Kinet JP. 2002. *Cell* 109:397–407
91. Liu D, Liman ER. 2003. *Proc. Natl. Acad. Sci. USA* 100:15160–65
92. Prawitt D, Monteilh-Zoller MK, Brixel L, Spangenberg C, Zabel B, et al. 2003. *Proc. Natl. Acad. Sci. USA* 100:15166–71
93. Nilius B, Prenen J, Droogmans G, Voets T, Vennekens R, et al. 2003. *J. Biol. Chem.* 278:30813–20
94. Nilius B, Prenen J, Janssens A, Owsianik G, Wang C, et al. 2005. *J. Biol. Chem.* 280:22899–906
95. Zhang Z, Okawa H, Wang Y, Liman ER. 2005. *J. Biol. Chem.* 280:39185–92
96. Nilius B, Mahieu F, Prenen J, Janssens A, Owsianik G, et al. 2006. *EMBO J.* 25:467–78
97. Talavera K, Yasumatsu K, Voets T, Droogmans G, Shigemura N, et al. 2005. *Nature* 438:1022–25
98. Runnels LW, Yue L, Clapham DE. 2001. *Science* 291:1043–47
99. Nadler MJ, Hermosura MC, Inabe K, Perraud AL, Zhu Q, et al. 2001. *Nature* 411:590–95
100. Monteilh-Zoller MK, Hermosura MC, Nadler MJ, Scharenberg AM, Penner R, Fleig A. 2003. *J. Gen. Physiol.* 121:49–60
101. Voets T, Nilius B, Hoefs S, van der Kemp AW, Droogmans G, et al. 2004. *J. Biol. Chem.* 279:19–25
102. Jiang J, Li M, Yue L. 2005. *J. Gen. Physiol.* 126:137–50
103. Runnels LW, Yue L, Clapham DE. 2002. *Nat. Cell Biol.* 4:329–36
104. Oancea E, Wolfe JT, Clapham DE. 2006. *Circ. Res.* 98:245–53
105. Schmitz C, Perraud AL, Johnson CO, Inabe K, Smith MK, et al. 2003. *Cell* 114:191–200
106. Demeuse P, Penner R, Fleig A. 2006. *J. Gen. Physiol.* 127:421–34
107. Matsushita M, Kozak JA, Shimizu Y, McLachlin DT, Yamaguchi H, et al. 2005. *J. Biol. Chem.* 280:20793–803
108. Perraud AL, Fleig A, Dunn CA, Bagley LA, Launay P, et al. 2001. *Nature* 411:595–99
109. Sano Y, Inamura K, Miyake A, Mochizuki S, Yokoi H, et al. 2001. *Science* 293:1327–30
110. Hara Y, Wakamori M, Ishii M, Maeno E, Nishida M, et al. 2002. *Mol. Cell* 9:163–73
111. Perraud AL, Takanishi CL, Shen B, Kang S, Smith MK, et al. 2005. *J. Biol. Chem.* 280:6138–48
112. Kolisek M, Beck A, Fleig A, Penner R. 2005. *Mol. Cell* 18:61–69
113. McHugh D, Flemming R, Xu SZ, Perraud AL, Beech DJ. 2003. *J. Biol. Chem.* 278:11002–6
114. Zhang W, Chu X, Tong Q, Cheung JY, Conrad K, et al. 2003. *J. Biol. Chem.* 278:16222–29
115. McKemy DD, Neuhauser WM, Julius D. 2002. *Nature* 416:52–58
116. Peier AM, Moqrich A, Hergarden AC, Reeve AJ, Andersson DA, et al. 2002. *Cell* 108:705–15
117. Bandell M, Dubin AE, Petrus MJ, Orth A, Mathur J, et al. 2006. *Nat. Neurosci.* 9:493–500
118. Andersson DA, Chase HW, Bevan S. 2004. *J. Neurosci.* 24:5364–69

119. Voets T, Droogmans G, Wissenbach U, Janssens A, Flockerzi V, Nilius B. 2004. *Nature* 430:748–54
120. Brauchi S, Orio P, Latorre R. 2004. *Proc. Natl. Acad. Sci. USA* 101:15494–99
121. Liu B, Qin F. 2005. *J. Neurosci.* 25:1674–81
122. Rohacs T, Lopes CM, Michailidis I, Logothetis DE. 2005. *Nat. Neurosci.* 8:626–34
123. Jaquemar D, Schenker T, Trueb B. 1999. *J. Biol. Chem.* 274:7325–33
124. Jordt SE, Bautista DM, Chuang HH, McKemy DD, Zygmunt PM, et al. 2004. *Nature* 427:260–65
125. Bandell M, Story GM, Hwang SW, Viswanath V, Eid SR, et al. 2004. *Neuron* 41:849–57
126. Bautista DM, Jordt SE, Nikai T, Tsuruda PR, Read AJ, et al. 2006. *Cell* 124:1269–82
127. Story GM, Peier AM, Reeve AJ, Eid SR, Mosbacher J, et al. 2003. *Cell* 112:819–29
128. Kwan KY, Allchorne AJ, Vollrath MA, Christensen AP, Zhang DS, et al. 2006. *Neuron* 50:277–89
129. Corey DP, Garcia-Anoveros J, Holt JR, Kwan KY, Lin SY, et al. 2004. *Nature* 432:723–30
130. Howard J, Bechstedt S. 2004. *Curr. Biol.* 14: R224–26
131. Lee Youngseok, Lee Yong, Lee Jaejung, Bang S, Hyun S, et al. 2005. *Nat. Genet.* 37:305–10
132. Viswanath V, Story GM, Peier AM, Petrus MJ, Lee VM, et al. 2003. *Nature* 423:822–23
133. Rosenzweig M, Brennan KM, Tayler TD, Phelps PO, Patapoutian A, Garrity PA. 2005. *Genes Dev.* 19:419–24
134. Tracey WDJ, Wilson RI, Laurent G, Benzer S. 2003. *Cell* 113:261–73
135. Al-Anzi B, Tracey WDJ, Benzer S. 2006. *Curr. Biol.* 16:1034–40
136. Walker RG, Willingham AT, Zuker CS. 2000. *Science* 287:2229–34
137. Barr MM, DeModena J, Braun D, Nguyen CQ, Hall DH, Sternberg PW. 2001. *Curr. Biol.* 11:1341–46
138. Gao Z, Ruden DM, Lu X. 2003. *Curr. Biol.* 13:2175–78
139. Watnick TJ, Jin Y, Matunis E, Kernan MJ, Montell C. 2003. *Curr. Biol.* 13:2179–84
140. Neill AT, Moy GW, Vacquier VD. 2004. *Mol. Reprod. Dev.* 67:472–77
141. IPKD Consortium. 1995. *Cell* 81:289–98
142. Geng L, Okuhara D, Yu Z, Tian X, Cai Y, et al. 2006. *J. Cell Sci.* 119:1383–95
143. Vassilev PM, Guo L, Chen XZ, Segal Y, Peng JB, et al. 2001. *Biochem. Biophys. Res. Commun.* 282:341–50
144. Luo Y, Vassilev PM, Li X, Kawanabe Y, Zhou J. 2003. *Mol. Cell. Biol.* 23:2600–7
145. Delmas P, Nauli SM, Li X, Coste B, Osorio N, et al. 2004. *FASEB J.* 18:740–42
146. Xu GM, Gonzalez-Perrett S, Essafi M, Timpanaro GA, Montalbetti N, et al. 2003. *J. Biol. Chem.* 278:1457–62
147. Nauli SM, Alenghat FJ, Luo Y, Williams E, Vassilev P, et al. 2003. *Nat. Genet.* 33:129–37
148. McGrath J, Somlo S, Makova S, Tian X, Brueckner M. 2003. *Cell* 114:61–73
149. Ma R, Li WP, Rundle D, Kong J, Akbarali HI, Tsiokas L. 2005. *Mol. Cell. Biol.* 25:8285–98
150. Gonzalez-Perrett S, Kim K, Ibarra C, Damiano AE, Zotta E, et al. 2001. *Proc. Natl. Acad. Sci. USA* 98:1182–87
151. Li Q, Montalbetti N, Shen PY, Dai XQ, Cheeseman CI, et al. 2005. *Hum. Mol. Genet.* 14:1587–603
152. Koulen P, Cai Y, Geng L, Maeda Y, Nishimura S, et al. 2002. *Nat. Cell Biol.* 4:191–97
153. Koulen P, Duncan RS, Liu J, Cohen NE, Yannazzo JA, et al. 2005. *Cell Calcium* 37:593–601
154. Kötting M, Benzing T, Simmen T, Tauber R, Buchholz B, et al. 2005. *EMBO J.* 24:705–16
155. Li Y, Wright JM, Qian F, Germino GG, Guggino WB. 2005. *J. Biol. Chem.* 280:41298–306

156. Liu Y, Li Q, Tan M, Zhang YY, Karpinski E, et al. 2002. *FEBS Lett.* 525:71–76
157. Dai XQ, Karpinski E, Chen XZ. 2006. *Biochim. Biophys. Acta* 1758:197–205
158. Venkatachalam K, Hofmann T, Montell C. 2006. *J. Biol. Chem.* 281:17517–27
159. Manzoni M, Monti E, Bresciani R, Bozzato A, Barlati S, et al. 2004. *FEBS Lett.* 567:219–24
160. Kiselyov K, Chen J, Rbaibi Y, Oberdick D, Tjon-Kon-Sang S, et al. 2005. *J. Biol. Chem.* 280:43218–23
161. LaPlante JM, Falardeau J, Sun M, Kanazirska M, Brown EM, et al. 2002. *FEBS Lett.* 532:183–87
162. Raychowdhury MK, Gonzalez-Perrett S, Montalbetti N, Timpanaro GA, Chasan B, et al. 2004. *Hum. Mol. Genet.* 13:617–27
163. Soyombo AA, Tjon-Kon-Sang S, Rbaibi Y, Bashllari E, Bisceglia J, et al. 2006. *J. Biol. Chem.* 281:7294–301
164. Goel M, Sinkins WG, Schilling WP. 2002. *J. Biol. Chem.* 277:48303–10
165. Hofmann T, Schaefer M, Schultz G, Gudermann T. 2002. *Proc. Natl. Acad. Sci. USA* 99:7461–66
166. Strübing C, Krapivinsky G, Krapivinsky L, Clapham DE. 2001. *Neuron* 29:645–55
167. Strübing C, Krapivinsky G, Krapivinsky L, Clapham DE. 2003. *J. Biol. Chem.* 278:39014–19
168. Lintschinger B, Balzer-Geldsetzer M, Baskaran T, Graier WF, Romanin C, et al. 2000. *J. Biol. Chem.* 275:27799–805
169. Tobin D, Madsen D, Kahn-Kirby A, Peckol E, Moulder G, et al. 2002. *Neuron* 35:307–18
170. Chubanov V, Waldegger S, Schnitzler MM, Vitzthum H, Sassen MC, et al. 2004. *Proc. Natl. Acad. Sci. USA* 101:2894–99
171. Li HS, Montell C. 2000. *J. Cell Biol.* 150:1411–22
172. Tsunoda S, Sun Y, Suzuki E, Zuker C. 2001. *J. Neurosci.* 21:150–58
173. Lockwich TP, Liu X, Singh BB, Jadlovec J, Weiland S, Ambudkar IS. 2000. *J. Biol. Chem.* 275:11934–42
174. Yuan JP, Kiselyov K, Shin DM, Chen J, Shcheynikov N, et al. 2003. *Cell* 114:777–89
175. Kim SJ, Kim YS, Yuan JP, Petralia RS, Worley PF, Linden DJ. 2003. *Nature* 426:285–91
176. Kim JY, Zeng W, Kiselyov K, Yuan JP, Dehoff MH, et al. 2006. *J. Biol. Chem.* 281:32540–49
177. Pérez CA, Huang L, Rong M, Kozak JA, Preuss AK, et al. 2002. *Nat. Neurosci.* 5:1169–76
178. Zhang Y, Hoon MA, Chandrashekar J, Mueller KL, Cook B, et al. 2003. *Cell* 112:293–301
179. Stowers L, Holy TE, Meister M, Dulac C, Koentges G. 2002. *Science* 295:1493–500
180. Leybold BG, Yu CR, Leinders-Zufall T, Kim MM, Zufall F, Axel R. 2002. *Proc. Natl. Acad. Sci. USA* 99:6376–81
181. Peier AM, Reeve AJ, Andersson DA, Moqrich A, Earley TJ, et al. 2002. *Science* 296:2046–49
182. Smith GD, Gunthorpe MJ, Kelsell RE, Hayes PD, Reilly P, et al. 2002. *Nature* 418:186–90
183. Xu H, Ramsey IS, Kotecha SA, Moran MM, Chong JA, et al. 2002. *Nature* 418:181–86
184. Güler AD, Lee HS, Iida T, Shimizu I, Tominaga M, Caterina M. 2002. *J. Neurosci.* 22:6408–14
185. Watanabe H, Vriens J, Suh SH, Benham CD, Droogmans G, Nilius B. 2002. *J. Biol. Chem.* 277:47044–51
186. Chung MK, Lee H, Caterina MJ. 2003. *J. Biol. Chem.* 278:32037–46
187. Chung MK, Lee H, Mizuno A, Suzuki M, Caterina MJ. 2004. *J. Biol. Chem.* 279:21569–75
188. Lee H, Caterina MJ. 2005. *Pflüg. Arch.* 451:160–67

189. Caterina MJ, Leffler A, Malmberg AB, Martin WJ, Trafton J, et al. 2000. *Science* 288:306–13
190. Davis JB, Gray J, Gunthorpe MJ, Hatcher JP, Davey PT, et al. 2000. *Nature* 405:183–87
191. Moqrich A, Hwang SW, Earley TJ, Petrus MJ, Murray AN, et al. 2005. *Science* 307:1468–72
192. Todaka H, Taniguchi J, Satoh J, Mizuno A, Suzuki M. 2004. *J. Biol. Chem.* 279:35133–38
193. Lee HS, Iida T, Mizuno A, Suzuki M, Caterina MJ. 2005. *J. Neurosci.* 25:1304–10
194. Liedtke W, Choe Y, Marti-Renom MA, Bell AM, Denis CS, et al. 2000. *Cell* 103:525–35
195. Liedtke W, Friedman JM. 2003. *Proc. Natl. Acad. Sci. USA* 100:13698–703
196. Liedtke W, Tobin DM, Bargmann CI, Friedman JM. 2003. *Proc. Natl. Acad. Sci. USA* 100(Suppl. 2):14531–36
197. Di Palma F, Belyantseva IA, Kim HJ, Vogt TF, Kachar B, Noben-Trauth K. 2002. *Proc. Natl. Acad. Sci. USA* 99:14994–99
198. Tabuchi K, Suzuki M, Mizuno A, Hara A. 2005. *Neurosci. Lett.* 382:304–8
199. Sidi S, Friedrich RW, Nicolson T. 2003. *Science* 301:96–99
200. Shin JB, Adams D, Paukert M, Siba M, Sidi S, et al. 2005. *Proc. Natl. Acad. Sci. USA* 102:12572–77
201. Gopfert MC, Albert JT, Nadrowski B, Kamikouchi A. 2006. *Nat. Neurosci.* 9:999–1000
202. Li W, Feng Z, Sternberg PW, Xu XZ. 2006. *Nature* 440:684–87
203. Foster RG. 2005. *Nature* 433:698–99
204. Panda S, Nayak SK, Campo B, Walker JR, Hogenesch JB, Jegla T. 2005. *Science* 307:600–4
205. Qiu X, Kumbalasiri T, Carlson SM, Wong KY, Krishna V, et al. 2005. *Nature* 433:745–49
206. Isoldi MC, Rollag MD, Castrucci AM, Provencio I. 2005. *Proc. Natl. Acad. Sci. USA* 102:1217–21
207. Li Y, Jia YC, Cui K, Li N, Zheng ZY, et al. 2005. *Nature* 434:894–98
208. Wang GX, Poo MM. 2005. *Nature* 434:898–904
209. Shim S, Goh EL, Ge S, Sailor K, Yuan JP, et al. 2005. *Nat. Neurosci.* 8:730–35
210. Greka A, Navarro B, Oancea E, Duggan A, Clapham DE. 2003. *Nat. Neurosci.* 6:837–45
211. Munsch T, Freichel M, Flockerzi V, Pape HC. 2003. *Proc. Natl. Acad. Sci. USA* 100:16065–70
212. Freichel M, Suh SH, Pfeifer A, Schweig U, Trost C, et al. 2001. *Nat. Cell Biol.* 3:121–27
213. Dietrich A, Mederos YSM, Gollasch M, Gross V, Storch U, et al. 2005. *Mol. Cell Biol.* 25:6980–89
214. MacPherson MR, Pollock VP, Kean L, Southall TD, Giannakou ME, et al. 2005. *Genetics* 169:1541–52
215. Singh BB, Zheng C, Liu X, Lockwich T, Liao D, et al. 2001. *FASEB J.* 15:1652–54
216. Cheng H, Beck A, Launay P, Gross SA, Stokes AJ, et al. 2007. *Cell Calcium* 41:51–61
217. Togashi K, Hara Y, Tominaga T, Higashi T, Konishi Y, et al. 2006. *EMBO J.* 25:1804–15
218. Birder LA, Nakamura Y, Kiss S, Nealen ML, Barrick S, et al. 2002. *Nat. Neurosci.* 5:856–60
219. Hoenderop JG, van Leeuwen JP, van der Eerden BC, Kersten FF, van der Kemp AW, et al. 2003. *J. Clin. Invest.* 112:1906–14
220. van der Eerden BC, Hoenderop JG, de Vries TJ, Schoenmaker T, Buurman CJ, et al. 2005. *Proc. Natl. Acad. Sci. USA* 102:17507–12
221. Elizondo MR, Arduini BL, Paulsen J, MacDonald EL, Sabel JL, et al. 2005. *Curr. Biol.* 15:667–71
222. Teramoto T, Lambie EJ, Iwasaki K. 2005. *Cell Metab.* 1:343–54
223. Sutters M, Germino GG. 2003. *J. Lab. Clin. Med.* 141:91–101
224. Cantiello HF. 2003. *Trends Mol. Med.* 9:234–36

225. Pennekamp P, Karcher C, Fischer A, Schweickert A, Skryabin B, et al. 2002. *Curr. Biol.* 12:938–43
226. Bach G. 2005. *Pflüg. Arch.* 451:313–17
227. Piper RC, Luzio JP. 2004. *Trends Cell Biol.* 14:471–73
228. Fares H, Greenwald I. 2001. *Nat. Genet.* 28:64–68
229. Balzer M, Lintschinger B, Groschner K. 1999. *Cardiovasc. Res.* 42:543–49
230. Agam K, von Campenhausen M, Levy S, Ben-Ami HC, Cook B, et al. 2000. *J. Neurosci.* 20:5748–55
231. Yoon J, Ben-Ami HC, Hong YS, Park S, Strong LL, et al. 2000. *J. Neurosci.* 20:649–59
232. Wang T, Xu H, Oberwinkler J, Gu Y, Hardie RC, Montell C. 2005. *Neuron* 45:367–78
233. Kaneko S, Kawakami S, Hara Y, Wakamori M, Itoh E, et al. 2006. *J. Pharmacol. Sci.* 101:66–76
234. Aarts M, Iihara K, Wei WL, Xiong ZG, Arundine M, et al. 2003. *Cell* 115:863–77
235. Rogers C, Persson A, Cheung B, de Bono M. 2006. *Curr. Biol.* 16:649–59
236. Xu C, Macciardi F, Li PP, Yoon IS, Cooke RG, et al. 2006. *Am. J. Med. Genet. B* 141:36–43
237. McQuillin A, Bass NJ, Kalsi G, Lawrence J, Puri V, et al. 2006. *Mol. Psychiatry* 11:134–42



# Contents

## Mitochondrial Theme

The Magic Garden <i>Gottfried Schatz</i> .....	673
DNA Replication and Transcription in Mammalian Mitochondria <i>Maria Falkenberg, Nils-Göran Larsson, and Claes M. Gustafsson</i> .....	679
Mitochondrial-Nuclear Communications <i>Michael T. Ryan and Nicholas J. Hoogenraad</i> .....	701
Translocation of Proteins into Mitochondria <i>Walter Neupert and Johannes M. Herrmann</i> .....	723
The Machines that Divide and Fuse Mitochondria <i>Suzanne Hoppins, Laura Lackner, and Jodi Nunnari</i> .....	751
Why Do We Still Have a Maternally Inherited Mitochondrial DNA? Insights from Evolutionary Medicine <i>Douglas C. Wallace</i> .....	781
Molecular Mechanisms of Antibody Somatic Hypermutation <i>Javier M. Di Noia and Michael S. Neuberger</i> .....	1
Structure and Mechanism of Helicases and Nucleic Acid Translocases <i>Martin R. Singleton, Mark S. Dillingham, and Dale B. Wigley</i> .....	23
The Nonsense-Mediated Decay RNA Surveillance Pathway <i>Yao-Fu Chang, J. Saadi Imam, Miles F. Wilkinson</i> .....	51
Functions of Site-Specific Histone Acetylation and Deacetylation <i>Mona D. Shabbazian and Michael Grunstein</i> .....	75
The tmRNA System for Translational Surveillance and Ribosome Rescue <i>Sean D. Moore and Robert T. Sauer</i> .....	101
Membrane Protein Structure: Prediction versus Reality <i>Arne Elofsson and Gunnar von Heijne</i> .....	125



Structure and Function of Toll Receptors and Their Ligands <i>Nicholas J. Gay and Monique Gangloff</i> .....	141
The Role of Mass Spectrometry in Structure Elucidation of Dynamic Protein Complexes <i>Michal Sharon and Carol V. Robinson</i> .....	167
Structure and Mechanism of the 6-Deoxyerythronolide B Synthase <i>Chaitan Khosla, Yinyan Tang, Alice Y. Chen, Nathan A. Schnarr, and David E. Cane</i> .....	195
The Biochemistry of Methane Oxidation <i>Amanda S. Hakemian and Amy C. Rosenzweig</i> .....	223
Anthrax Toxin: Receptor Binding, Internalization, Pore Formation, and Translocation <i>John A.T. Young and R. John Collier</i> .....	243
Synapses: Sites of Cell Recognition, Adhesion, and Functional Specification <i>Soichiro Yamada and W. James Nelson</i> .....	267
Lipid A Modification Systems in Gram-negative Bacteria <i>Christian R.H. Raetz, C. Michael Reynolds, M. Stephen Trent, and Russell E. Bishop</i> .....	295
Chemical Evolution as a Tool for Molecular Discovery <i>S. Jarrett Wrenn and Pebr B. Harbury</i> .....	331
Molecular Mechanisms of Magnetosome Formation <i>Arash Komeili</i> .....	351
Modulation of the Ryanodine Receptor and Intracellular Calcium <i>Ran Zalk, Stephan E. Lebnart, and Andrew R. Marks</i> .....	367
TRP Channels <i>Kartik Venkatachalam and Craig Montell</i> .....	387
Studying Individual Events in Biology <i>Stefan Wennmalm and Sanford M. Simon</i> .....	419
Signaling Pathways Downstream of Pattern-Recognition Receptors and Their Cross Talk <i>Myeong Sup Lee and Young-Joon Kim</i> .....	447
Biochemistry and Physiology of Cyclic Nucleotide Phosphodiesterases: Essential Components in Cyclic Nucleotide Signaling <i>Marco Conti and Joseph Beavo</i> .....	481
The Eyes Absent Family of Phosphotyrosine Phosphatases: Properties and Roles in Developmental Regulation of Transcription <i>Jennifer Jemc and Ilaria Rebay</i> .....	513

Assembly Dynamics of the Bacterial MinCDE System and Spatial Regulation of the Z Ring <i>Joe Lutkenhaus</i> .....	539
Structures and Functions of Yeast Kinetochore Complexes <i>Stefan Westermann, David G. Drubin, and Georjana Barnes</i> .....	563
Mechanism and Function of Formins in the Control of Actin Assembly <i>Bruce L. Goode and Michael J. Eck</i> .....	593
Unsolved Mysteries in Membrane Traffic <i>Suzanne R. Pfeffer</i> .....	629
Structural Biology of Nucleocytoplasmic Transport <i>Atlanta Cook, Fulvia Bono, Martin Jinek, and Elena Conti</i> .....	647
The Postsynaptic Architecture of Excitatory Synapses: A More Quantitative View <i>Morgan Sheng and Casper C. Hoogenraad</i> .....	823

## Indexes

Cumulative Index of Contributing Authors, Volumes 72–76 .....	849
Cumulative Index of Chapter Titles, Volumes 72–76 .....	853

## Errata

An online log of corrections to *Annual Review of Biochemistry* chapters (if any, 1997 to the present) may be found at <http://biochem.annualreviews.org/errata.shtml>