

Sacharidy – rozšiřující

Waldenův zvrát

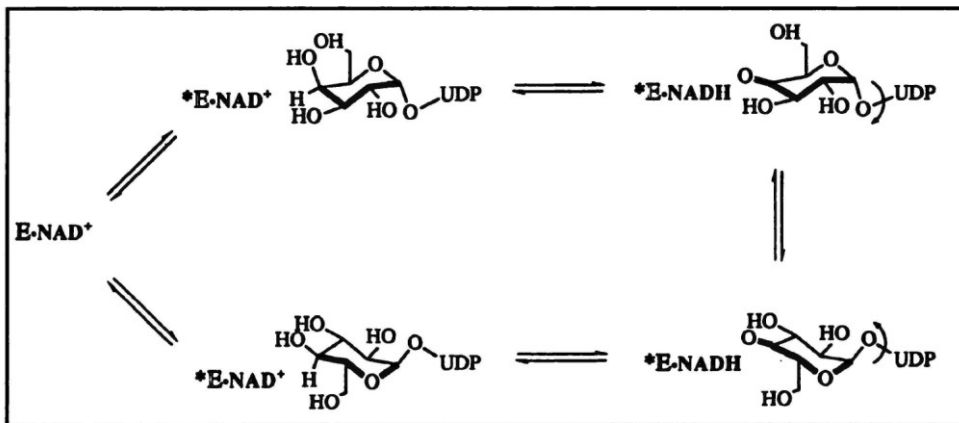
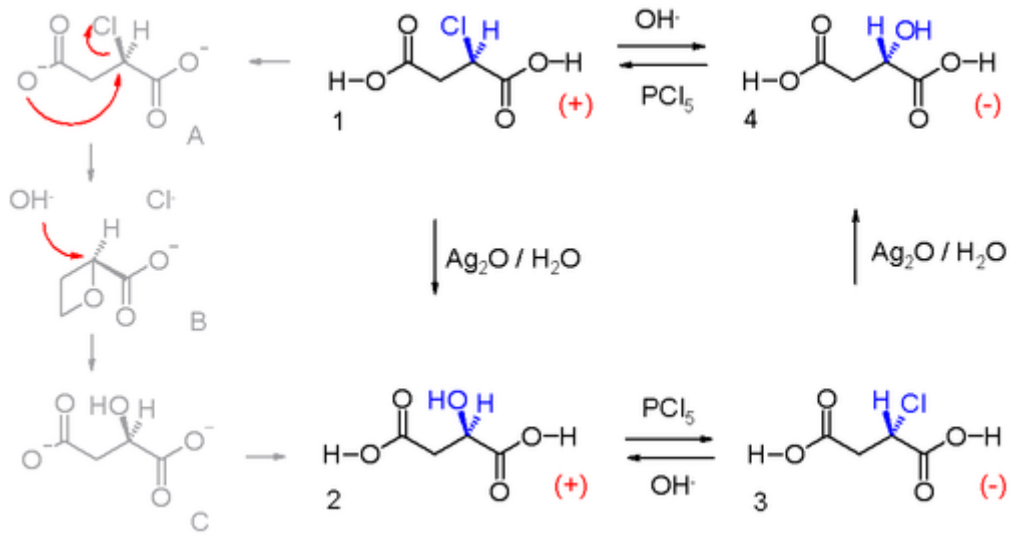


Figure 3. The mechanism of the interconversion of UDP-galactose and UDP-glucose by UDP-galactose 4-epimerase.

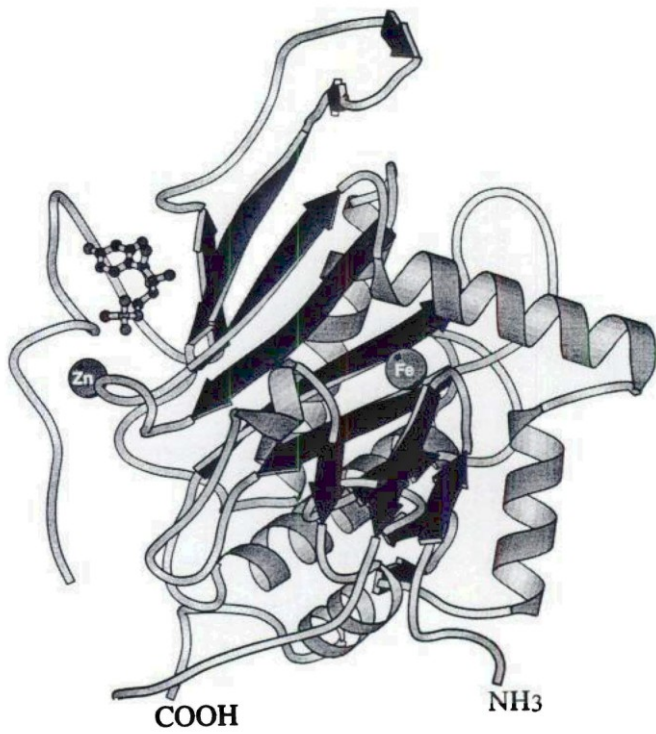
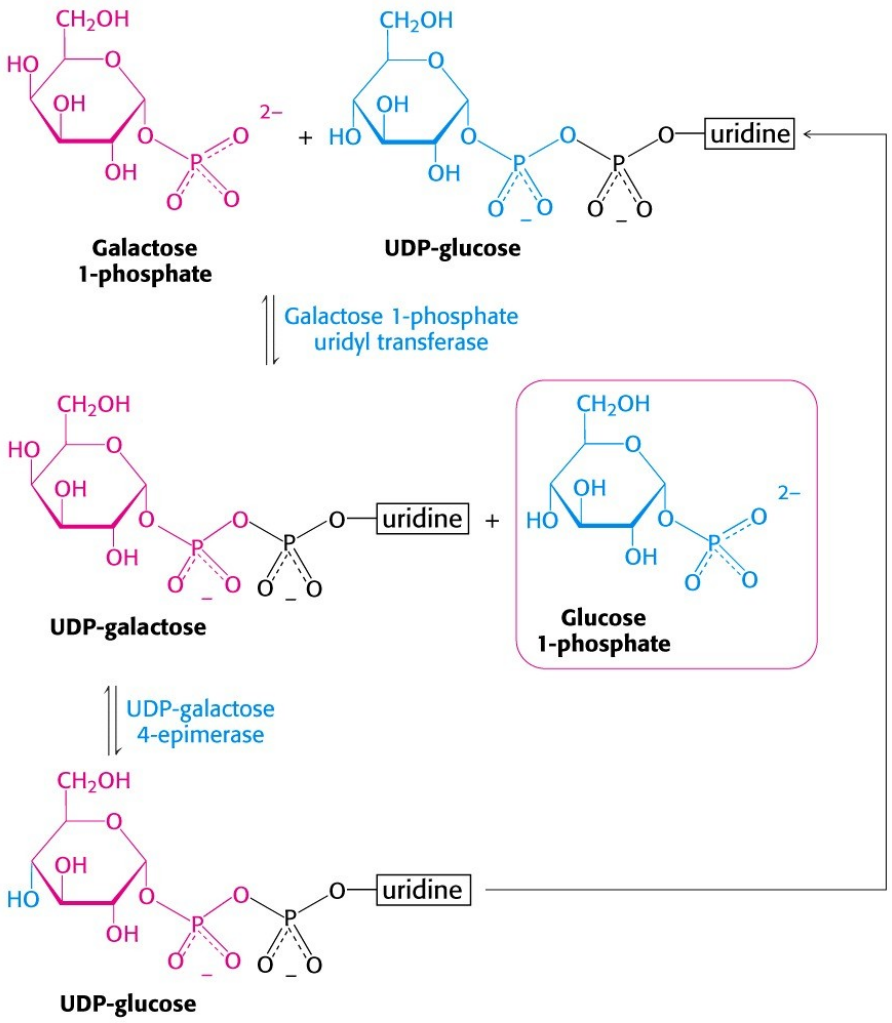


Figure 7. A ribbon diagram of the polypeptide chain in galactose-1-P uridylyltransferase from *E. coli*. Shown is a ribbon diagram of one subunit in the dimeric unit of galactose-1-P uridylyltransferase from *E. coli*. UDP binds to the active site, and its location is illustrated in the diagram. The two metal ions Zn²⁺ and Fe²⁺ are shown in their preferential binding sites. Neither metal ion appears to be located within the active site. At least one of the metal ions is required for enzymatic activity, and both may be required. Enzymatic activity is supported by either metal at both sites or by Co²⁺, Mn²⁺, or Cd²⁺ at both sites. The metal ions most likely participate in maintaining the active conformation of the enzyme. Courtesy of Joseph E. Wedekind and Ivan Rayment.



PENTOSOVÝ CYKLUS

