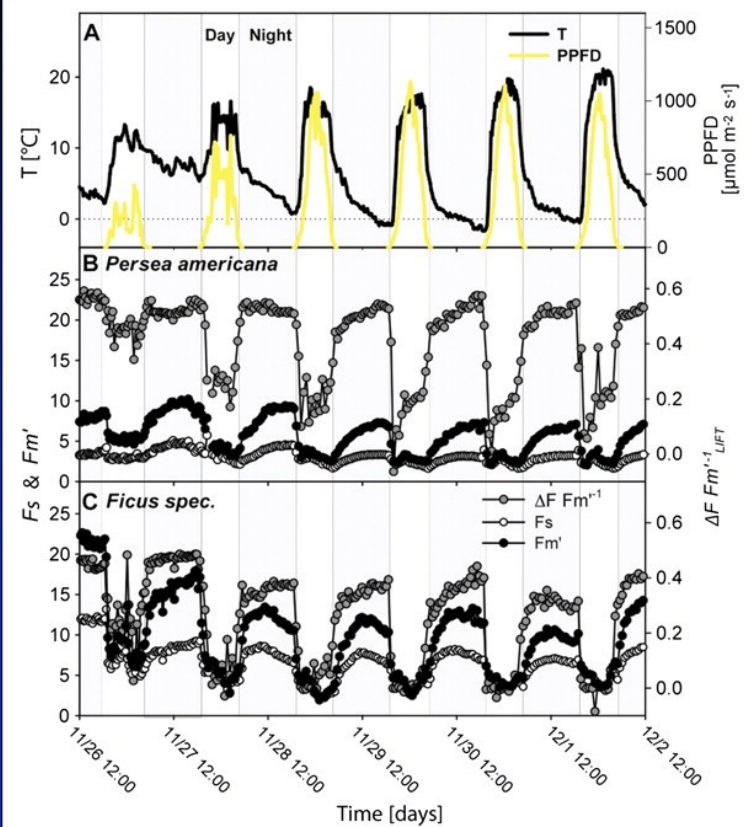
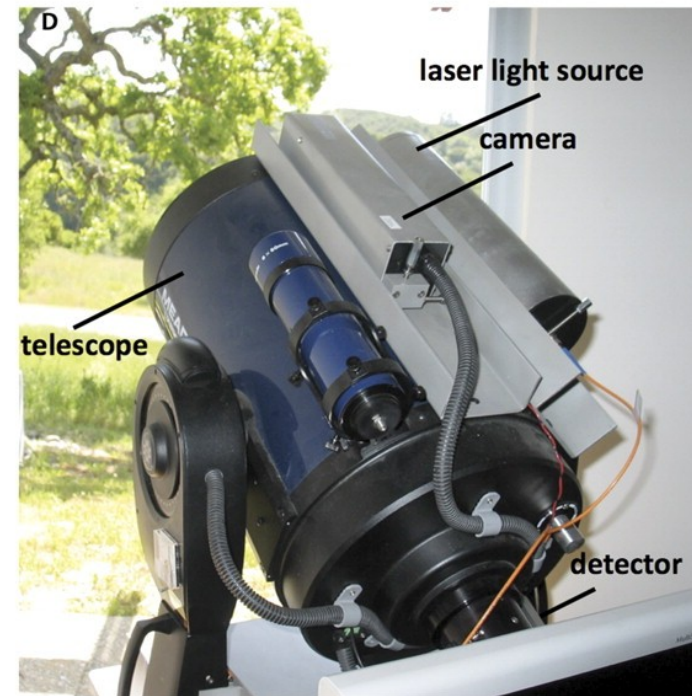


Temporal influence of changing low/high temperature-irradiation environmental conditions, fluctuating in seven diurnal cycles (A), on two plant species *Persea americana* (B) and *Ficus sp.*

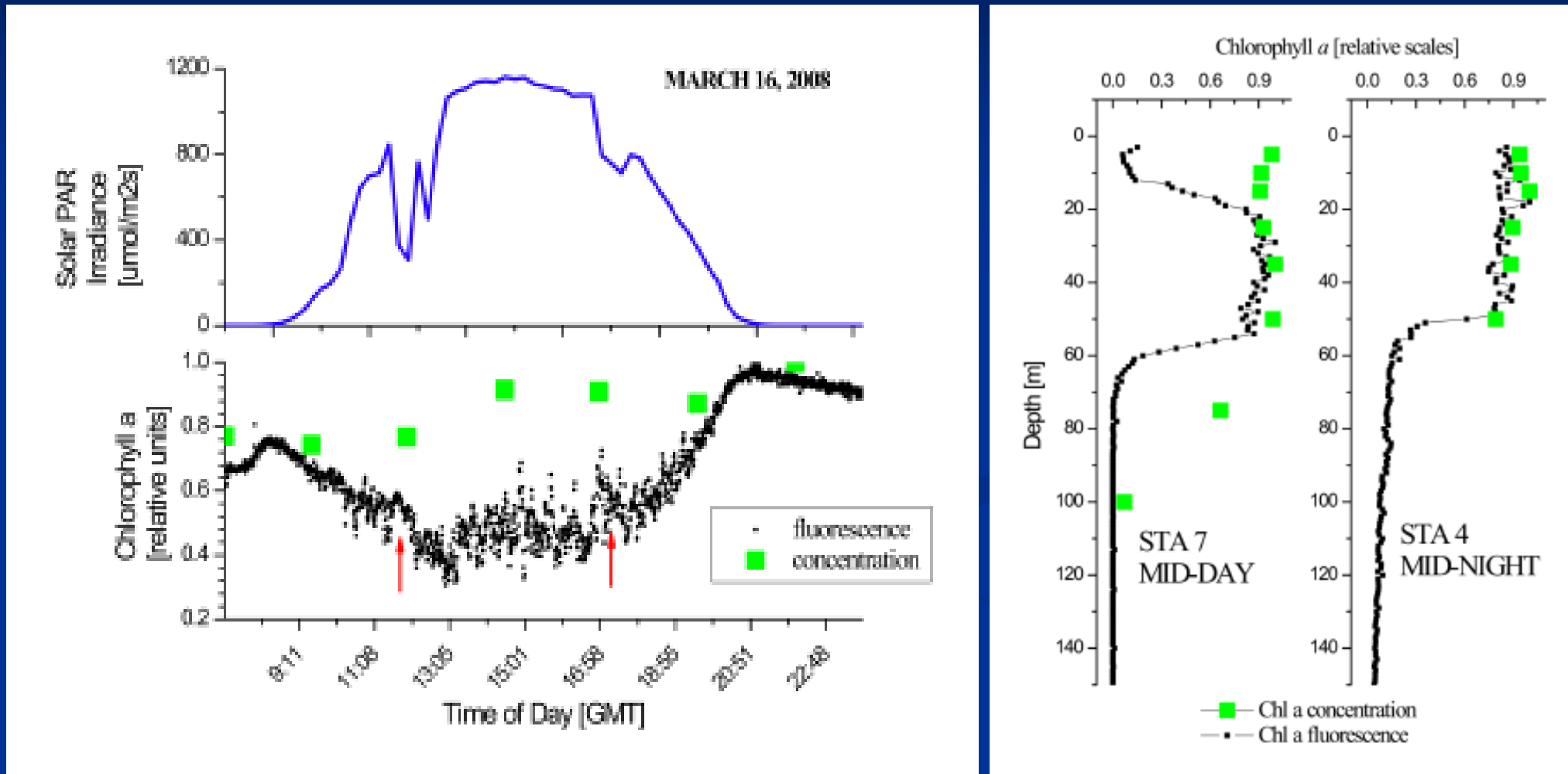


Malenovský Z et al. J. Exp. Bot. 2009;60:2987-3004

JOURNAL OF
Experimental Botany

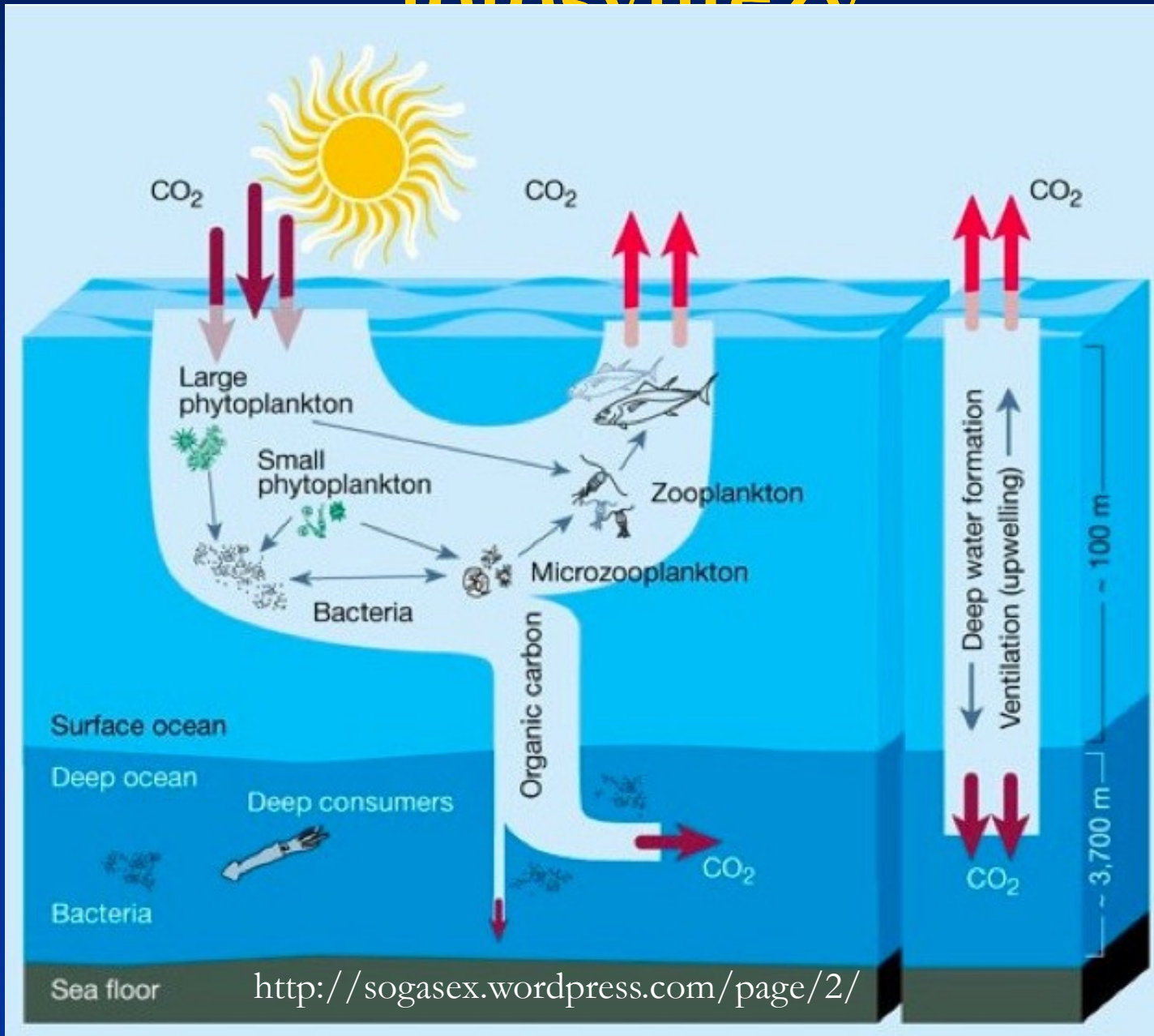


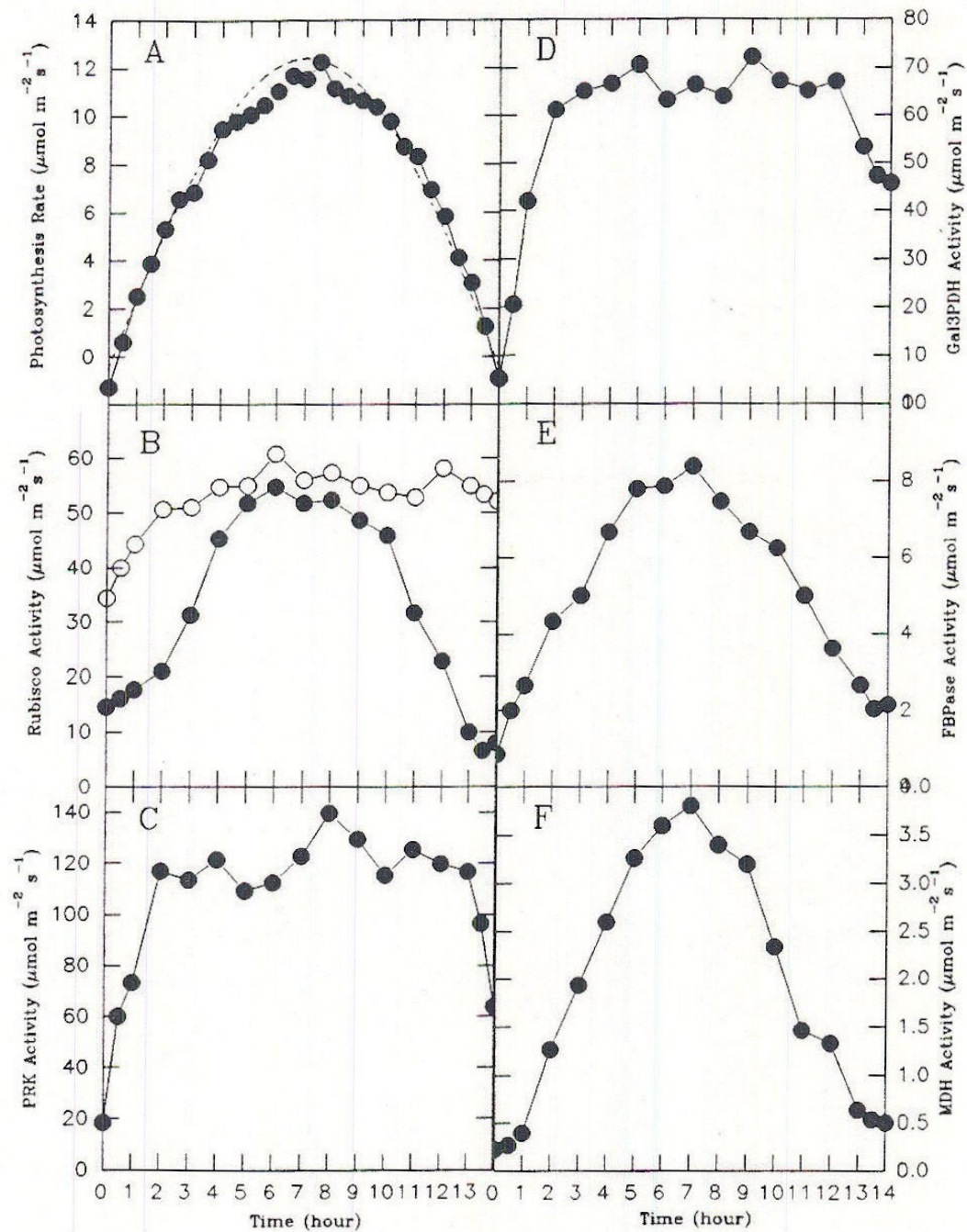
Denní chody v oceánu - fytoplankton



- Dva svislé profily fluorescence Chla (černé symboly) a odpovídající hodnoty koncentrací Chl (zelené symboly) pro den (levý graf) a noc stanice (vpravo graf). Během dne, Chl fluorescence je v horní části 20 m zhášena a nesleduje Chl koncentraci. Zhášení během noci není

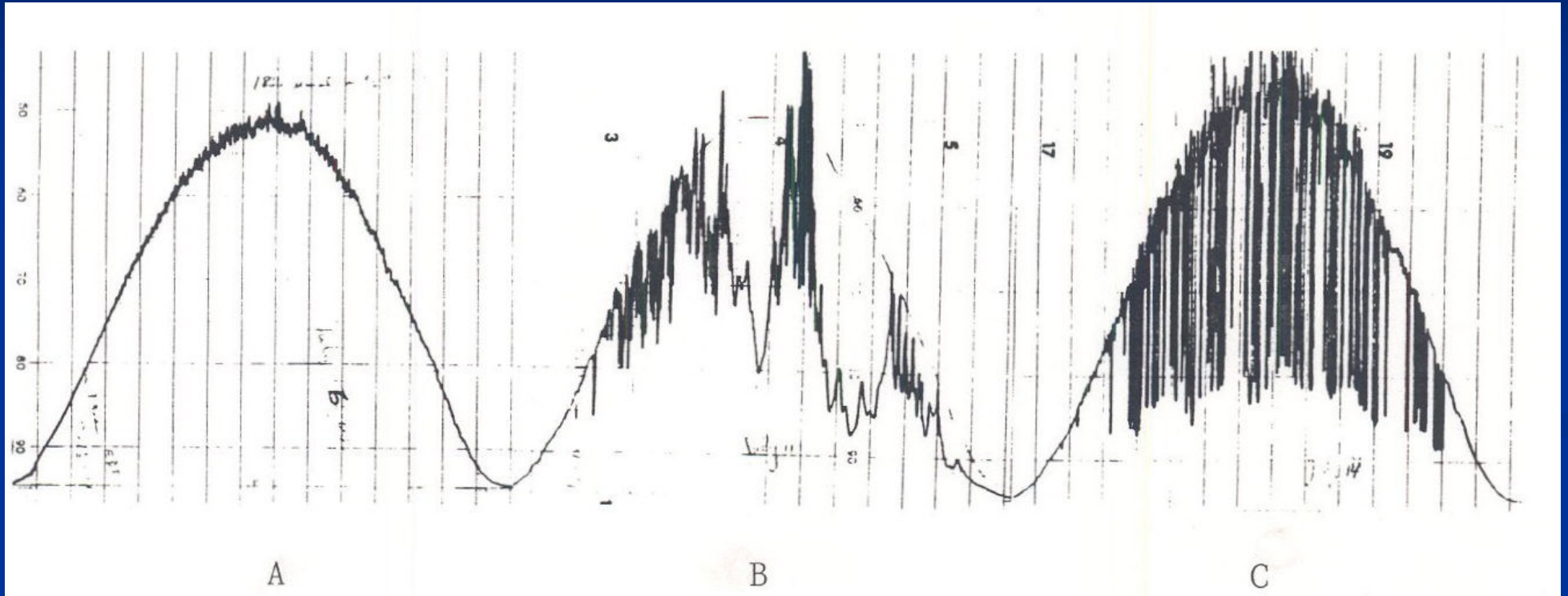
Oceanické vody – denní chody fotosyntézy





- Time courses of photon irradiance, net carbon exchange (NCE) rate, and enzyme activation state during a simulated natural day period. A. Photosynthesis rate (\bullet), photon irradiance (---) maximal photon irradiance was $800 \mu\text{mol m}^{-2} \text{s}^{-1}$, B. initial Rubisco activity (\bullet) and total Rubisco activity (\circ). C.-F. activities of other Calvin cycle enzymes. From Servaites et al., 1991.

Denní chody PAR



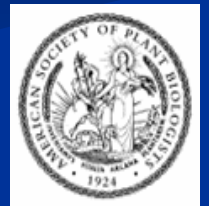
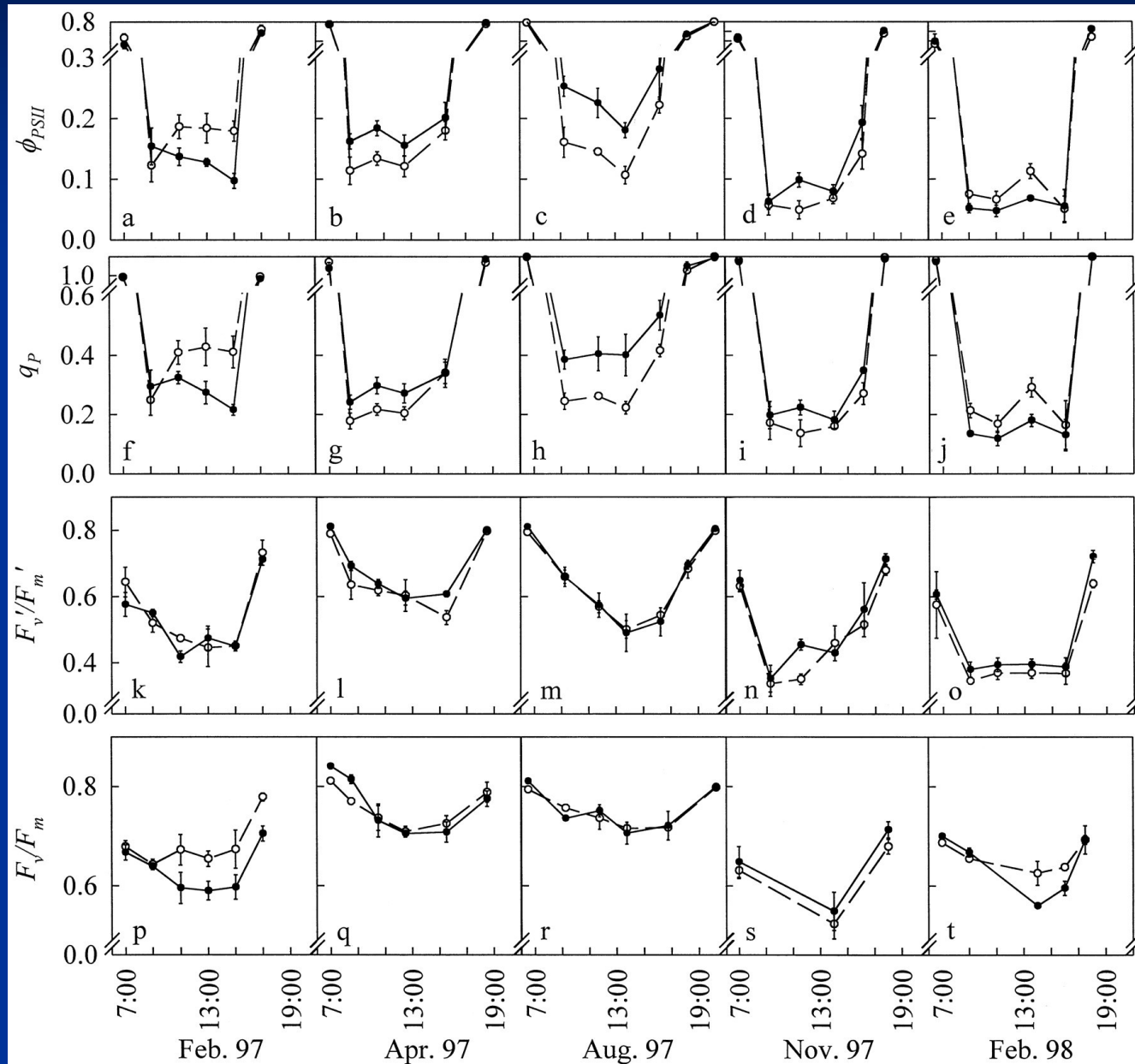
■ Slunečno

oblačno/zataženo

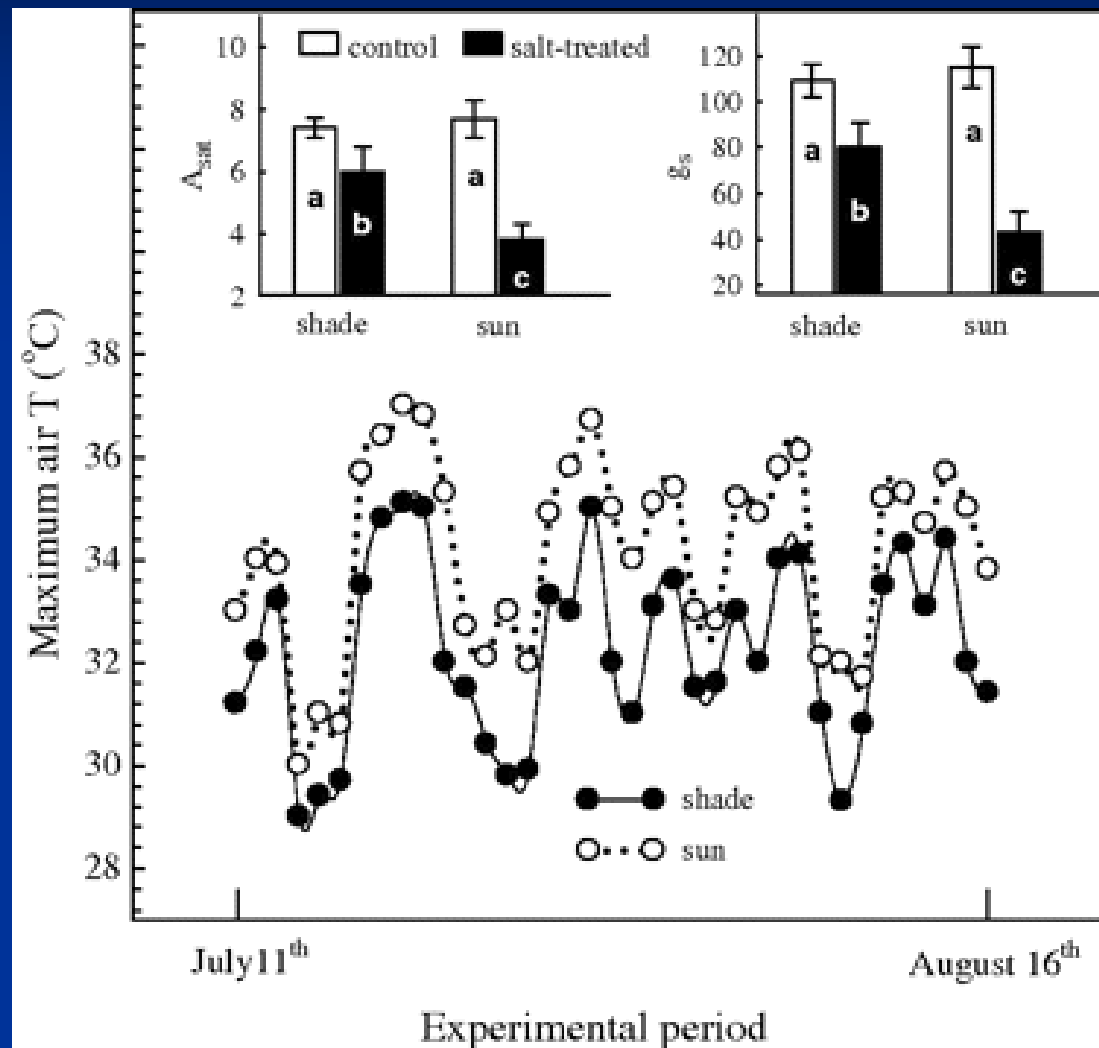
oblačno

Diurnal variation in ϕ_{PSII} (a–e), q_P (f–j), F_v'/F_m' (k–o), and F_v/F_m (p–t) for elevated (•) and current (○) pCO_2 measured on the same tissue and at the same times as the measurements illustrated in Figure 1.

Hymus G J et al. *Plant Physiol.* 1999;120:1183-1192



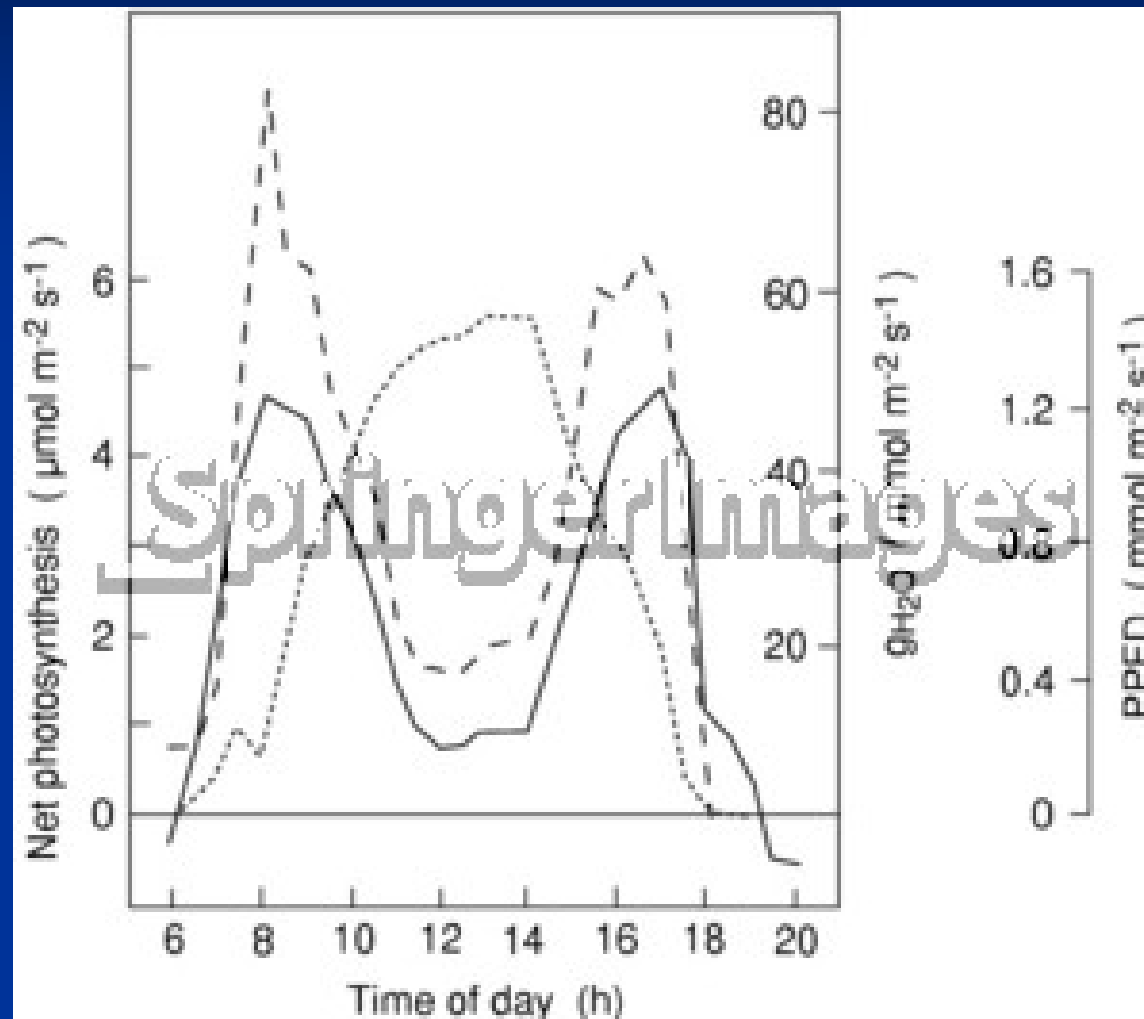
Denní chody teploty vzduchu/listu



Tree Physiol (2009) 29
(9): 1187-1198. :

- Olivy, *O. europaea* plants growing in the shade (closed symbols) or under full sun conditions (open symbols), at the experimental farm of the University of Pisa at Colignola (43°43' N and 10°23' E)

Polední deprese fotosyntézy



- Tenhunen et al. (1984)

