

Odd.: Euglenophyta Třída: Euglenophyceae Řád: Euglenales



*Euglena gracilis*

© orig. Uher B.



*Euglena gracilis*

© orig. Uher B.

*Euglena gracilis*

10  $\mu\text{m}$



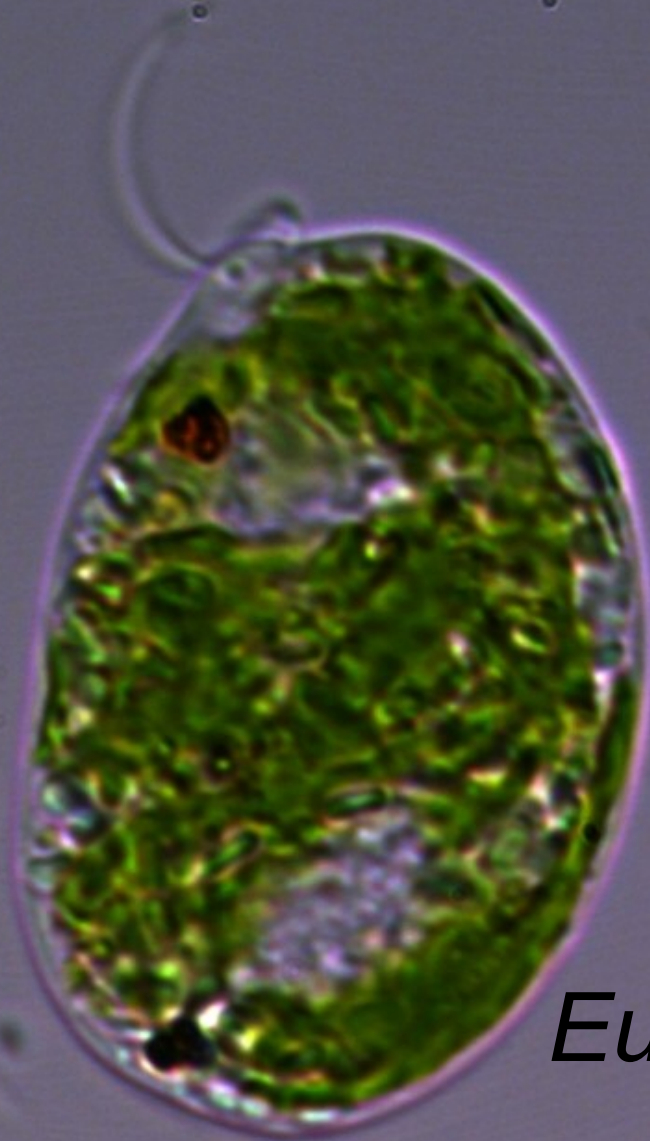
© orig. Uher B.

A light micrograph of a single Euglena gracilis cell. The cell is elongated and spindle-shaped, with a prominent, rounded anterior end and a narrower posterior end. It is filled with a dense, granular green material, likely chloroplasts. A thin, clear layer, the pellicle, is visible around the cell. A horizontal scale bar is located to the left of the cell, with the text "10 μm" above it. The background is a uniform light gray.

10 μm

*Euglena gracilis*

© orig. Uher B.



*Euglena gracilis*

*Euglena* sp.



© Carter-Lund&Lund