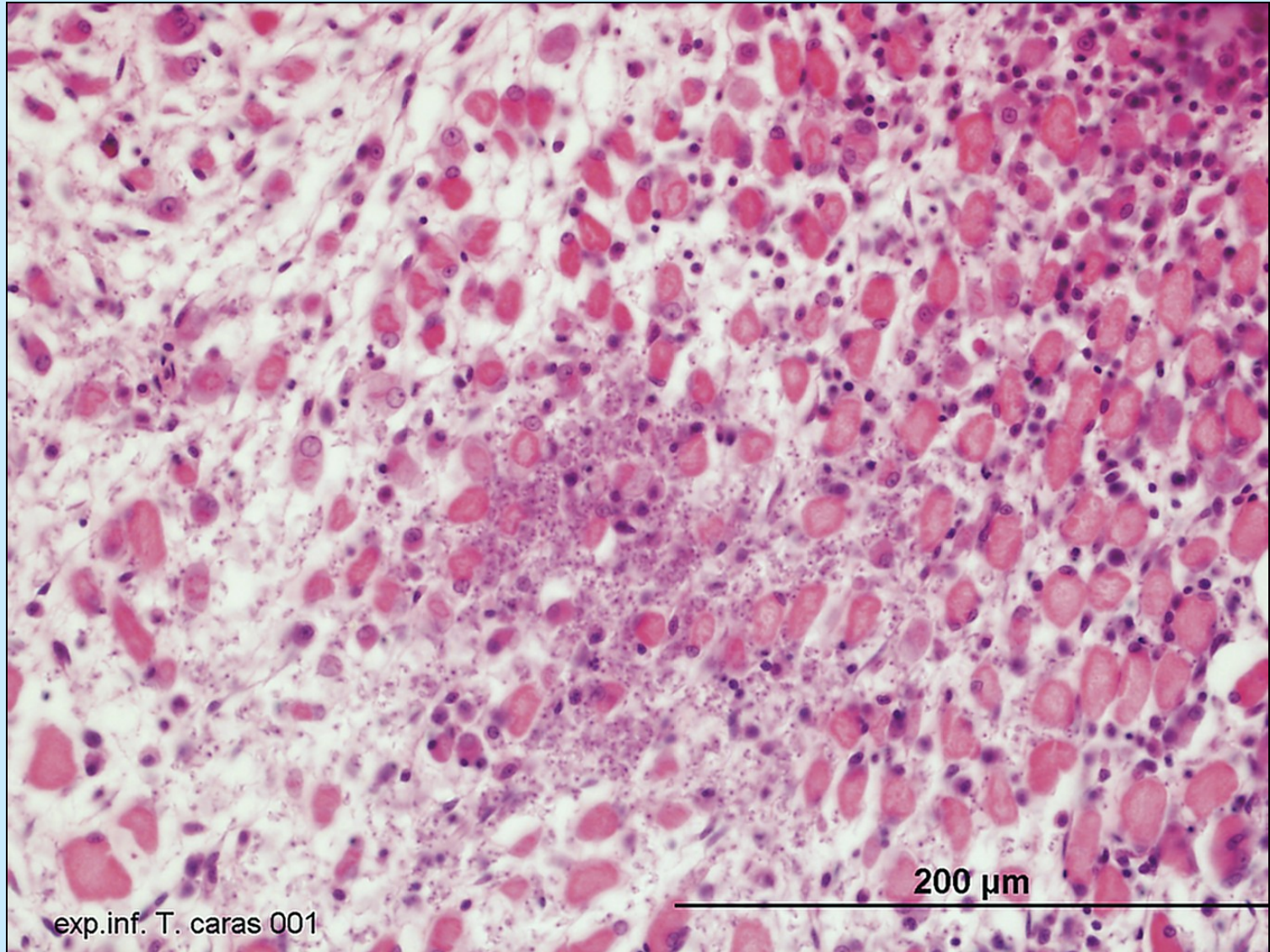


# Speciální patologie ryb

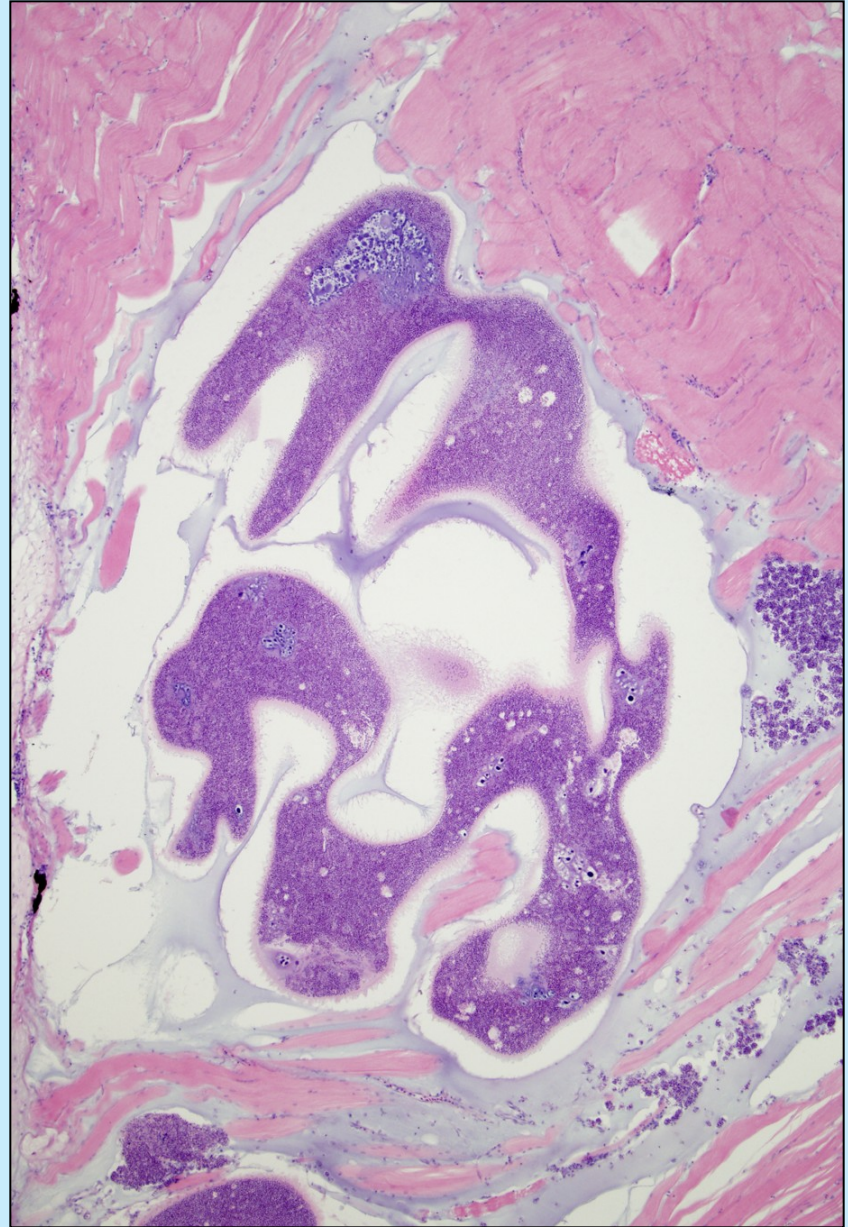
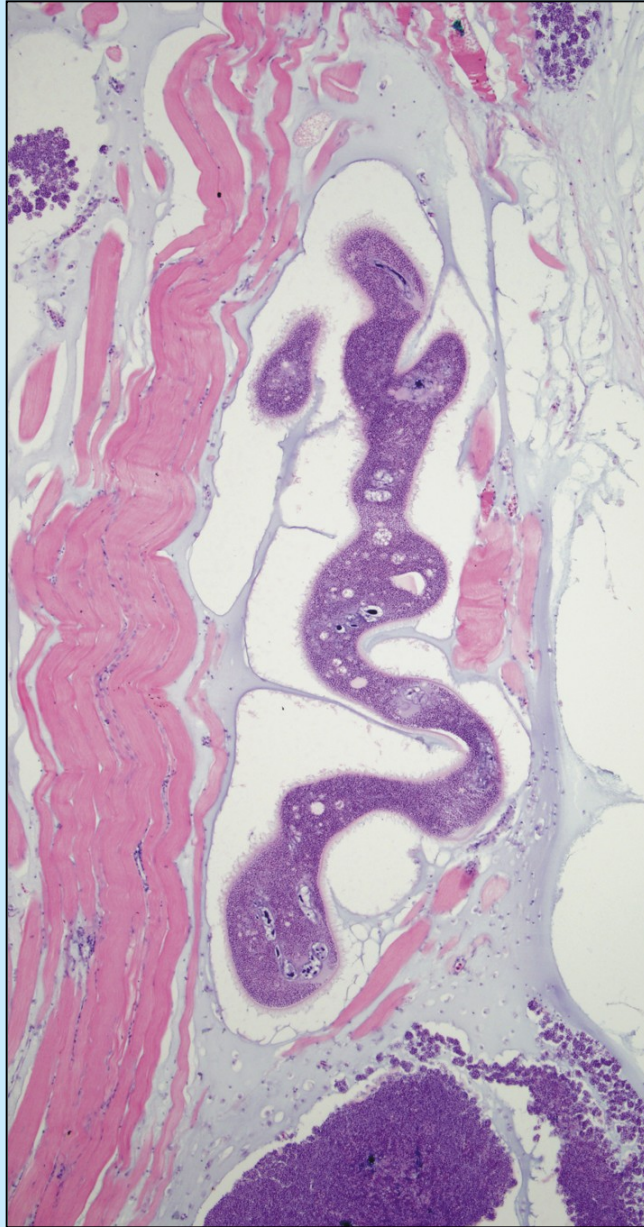
Leze působené parazity ve svalech a trávicím systému,

Krevní bičíkovci – experimentální infekce *Trypanosoma carassii*



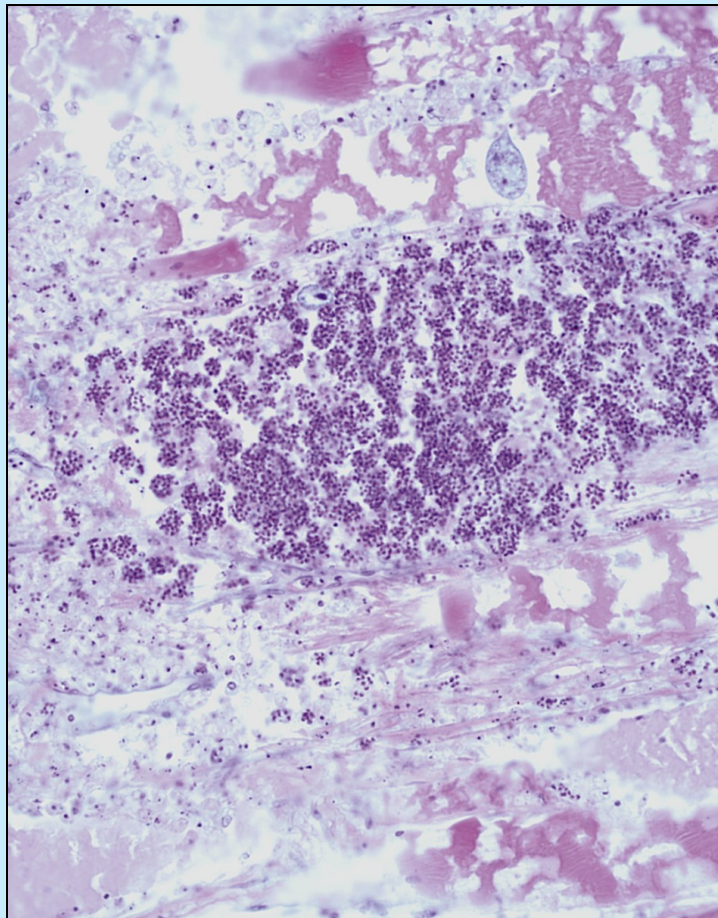


Mikrosporidie – *Tetramicra brevifilum* – *Psetta maxima*

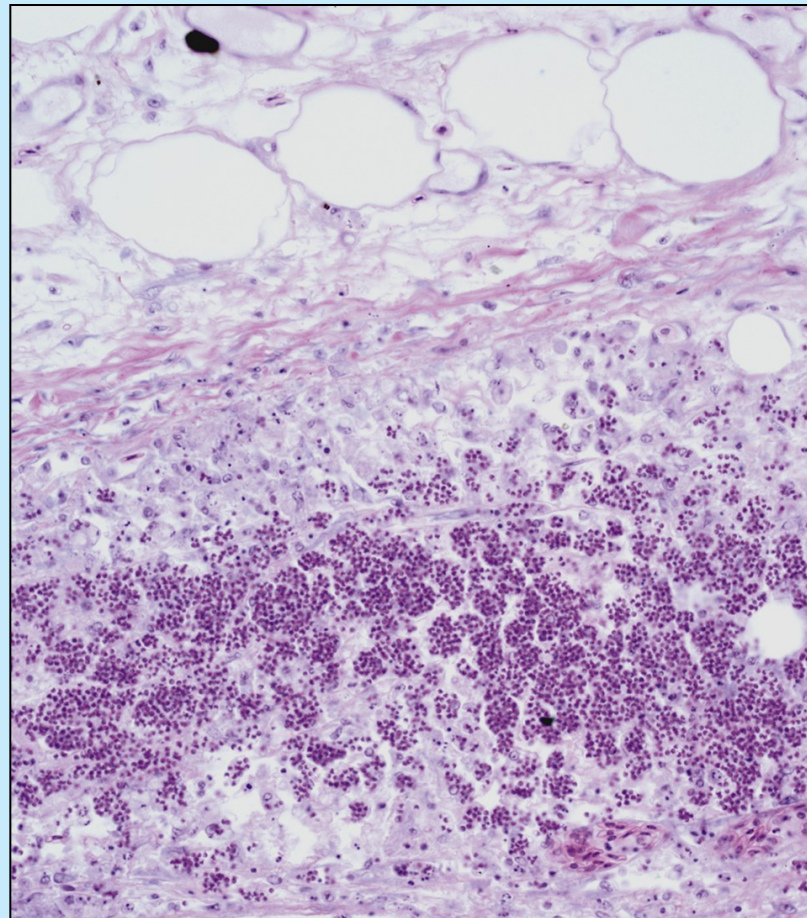




Mikrosporidie – *Tetramicra brevifilum* – *Psetta maxima*, spory uvolněné z xenomů



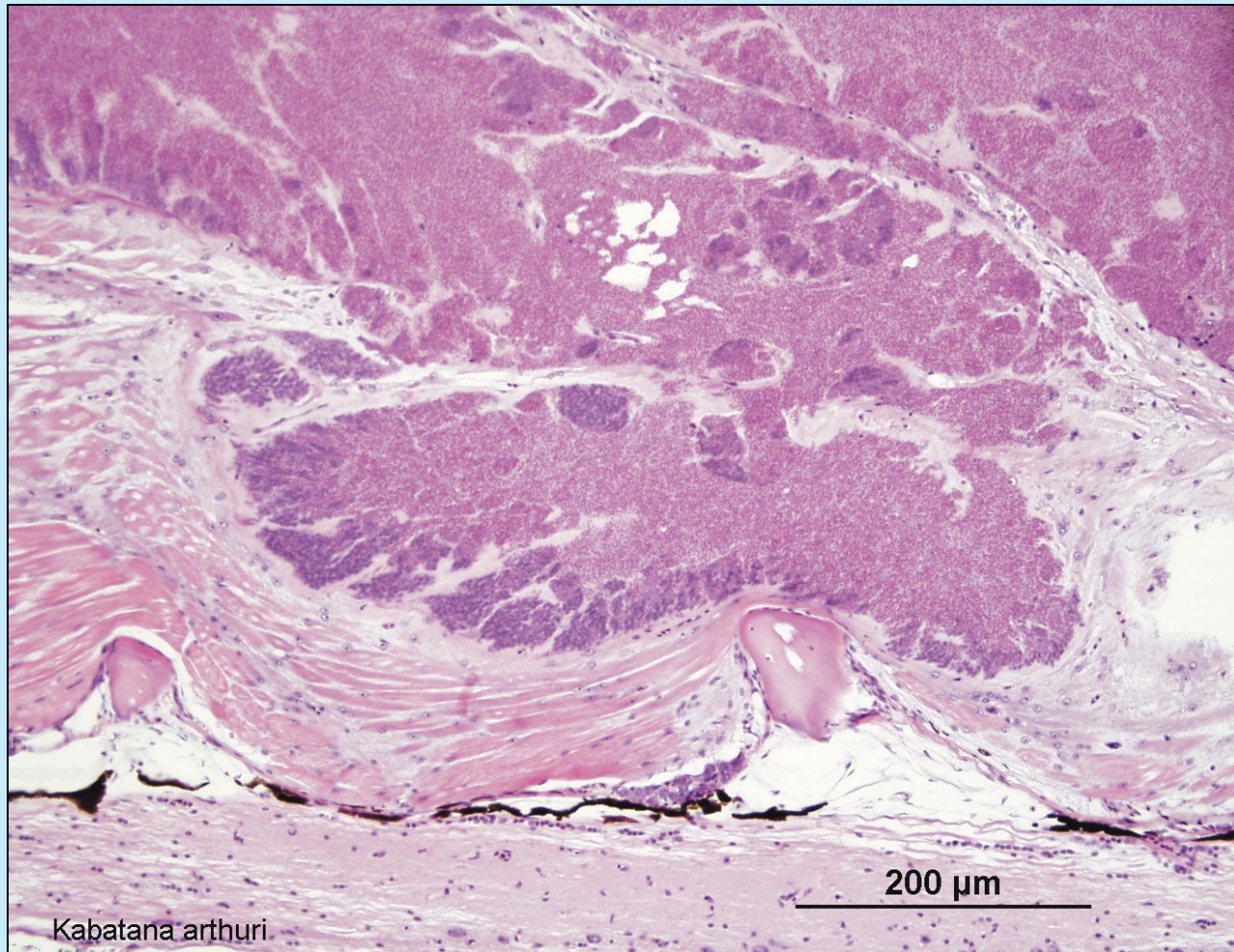
svalovina



intermysium

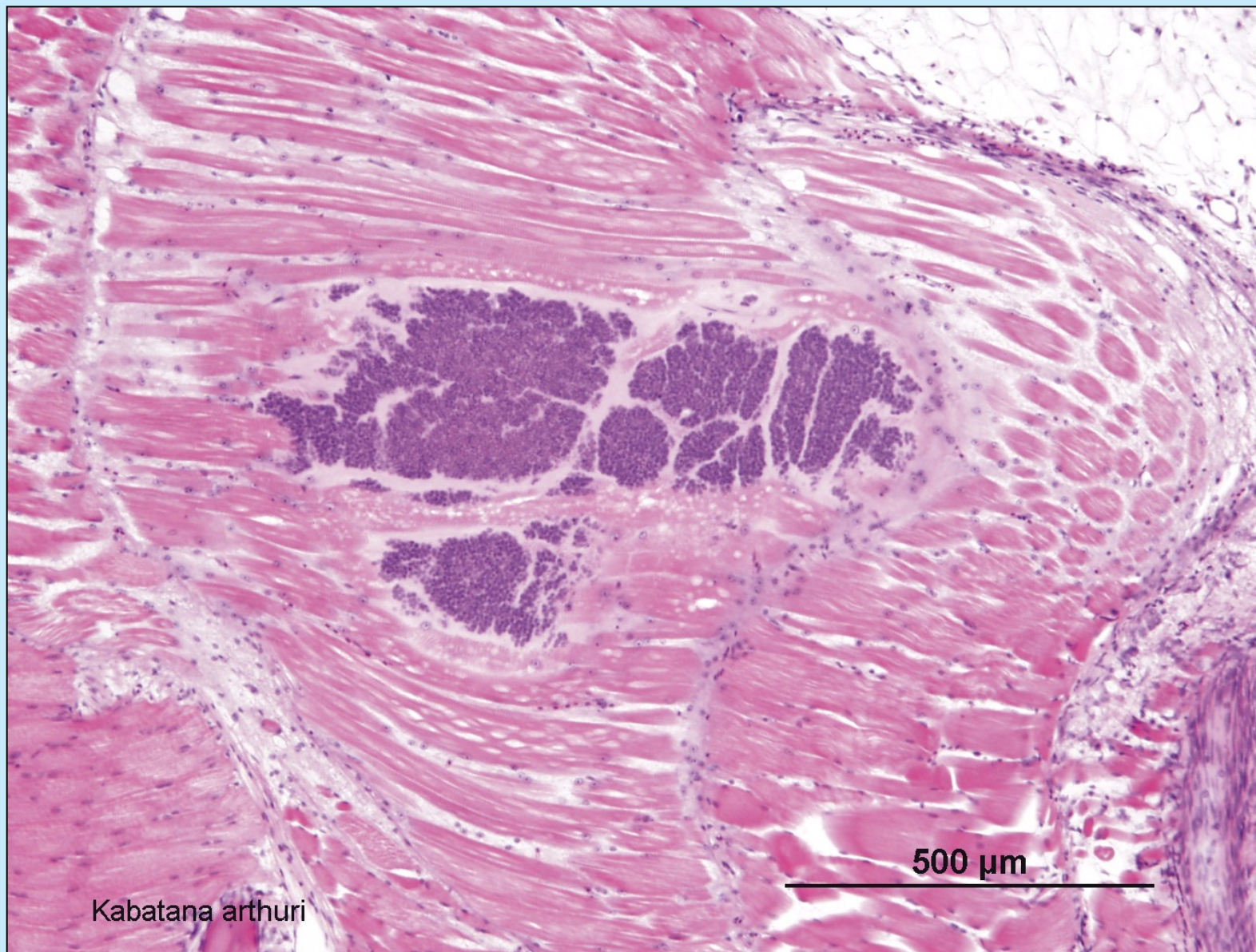


Mikrosporidie – *Kabatana arthuri*, svaly, *Pangasius sutchi*



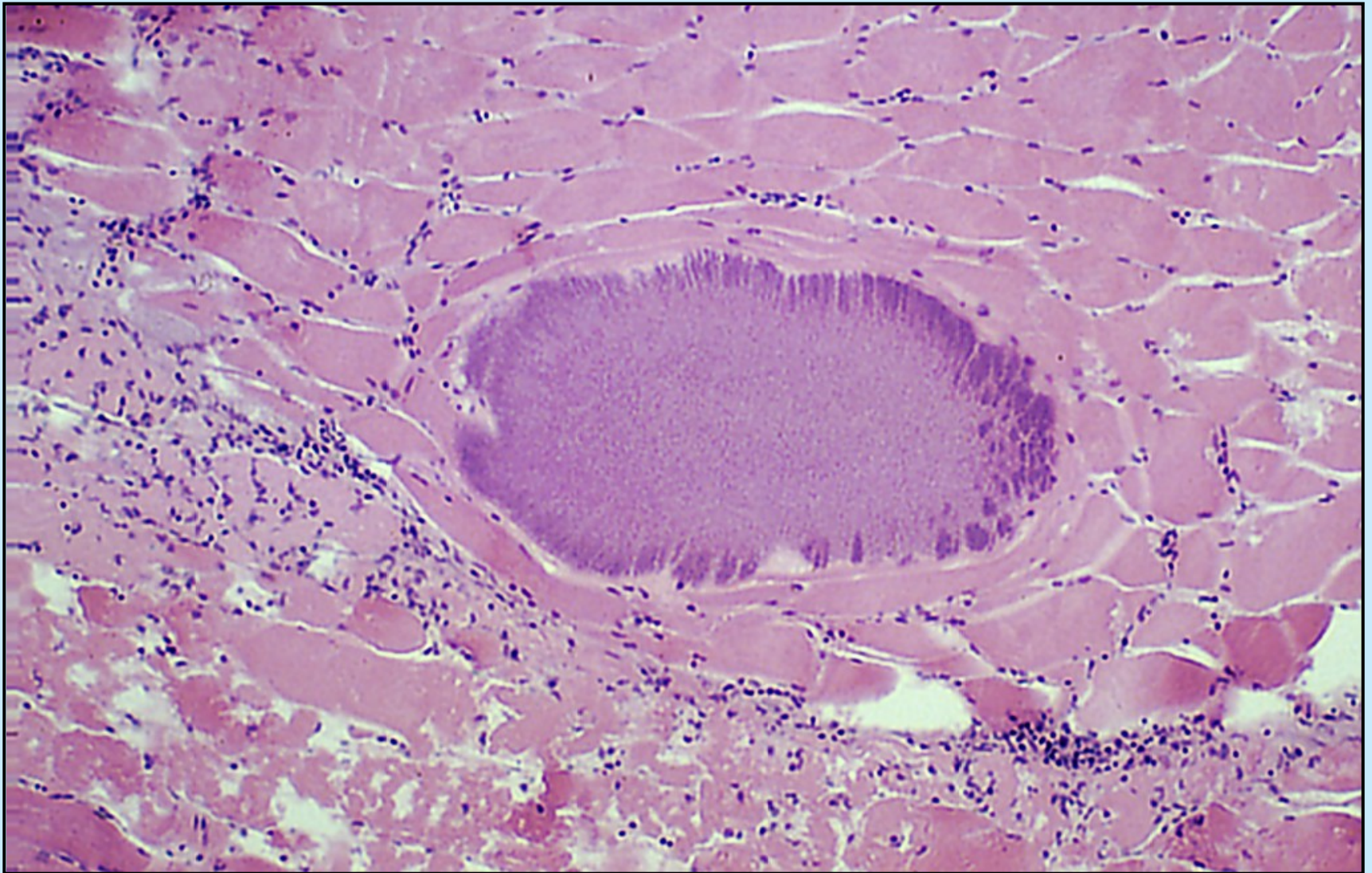


Mikrosporidie – *Kabatana arthuri*, svaly, *Pangasius sutchi*, předspórová st.



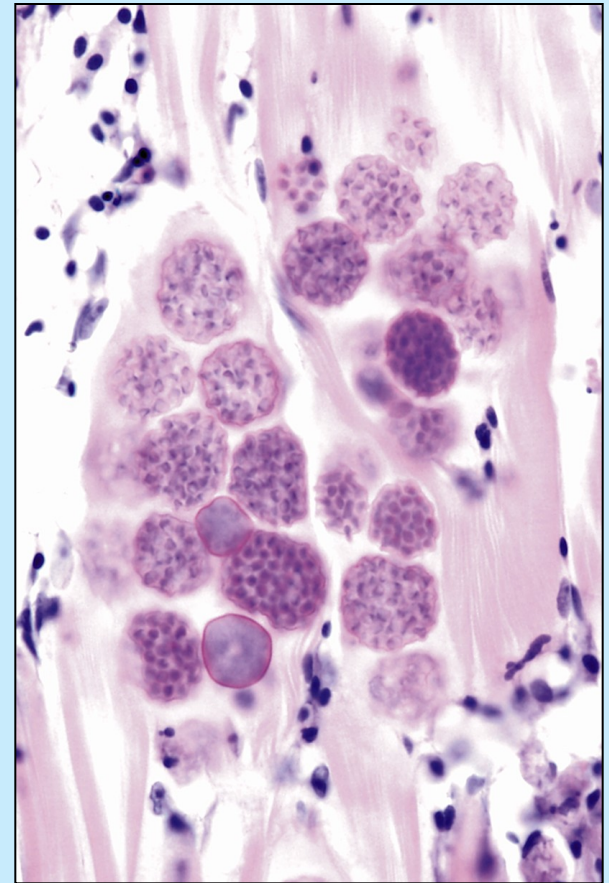
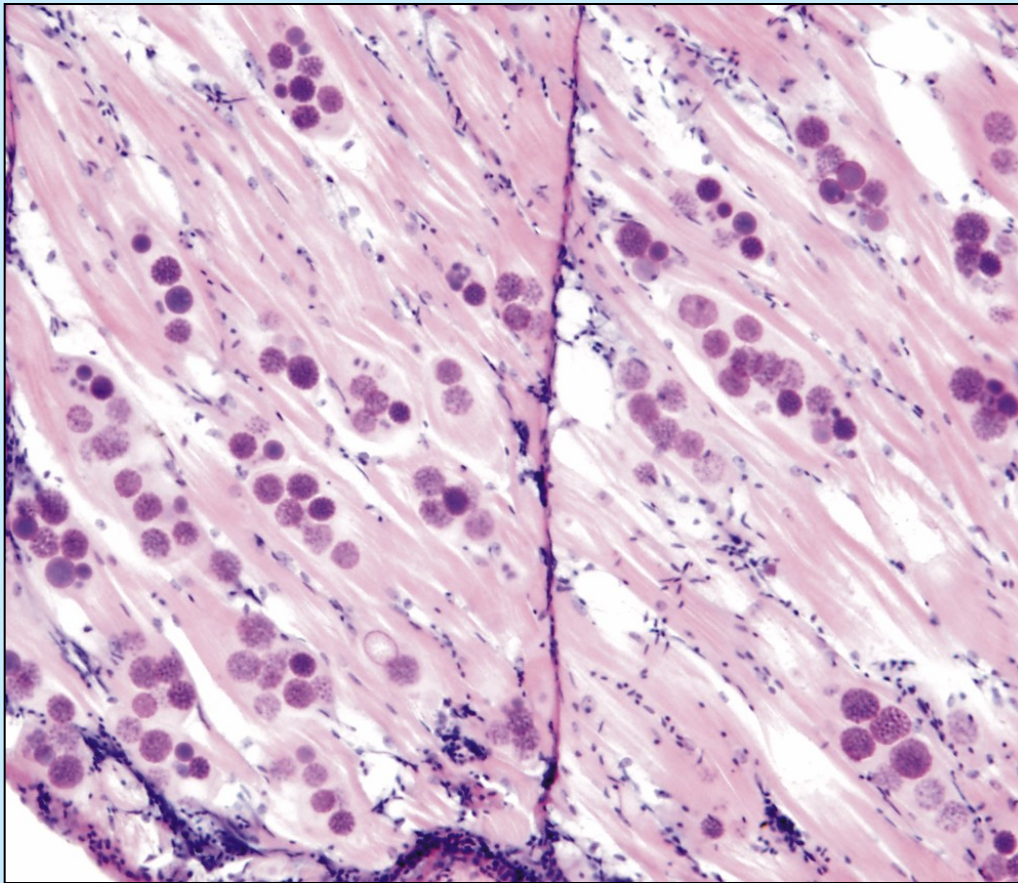


Mikrosporidie – *Kabatana arthuri*, svaly, *Pangasius sutchi*

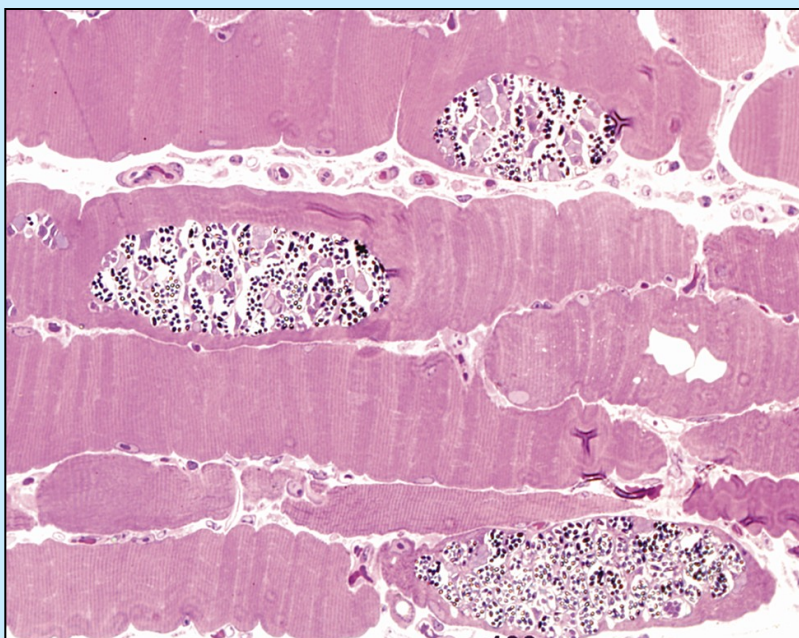
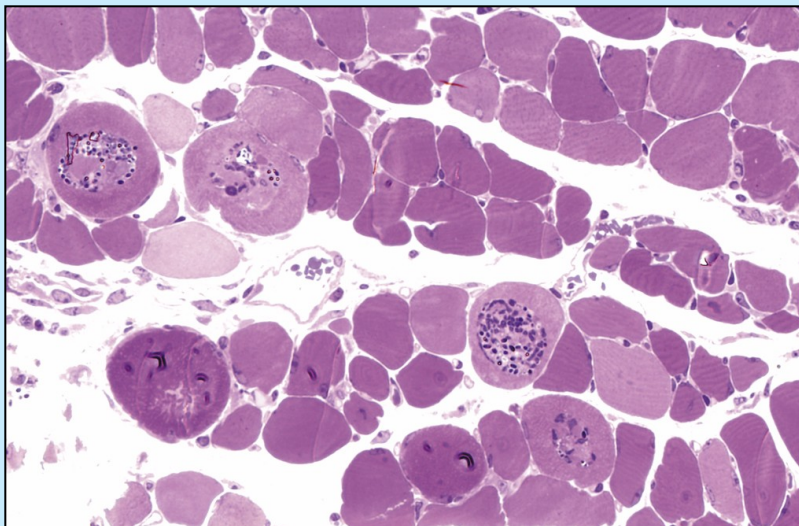




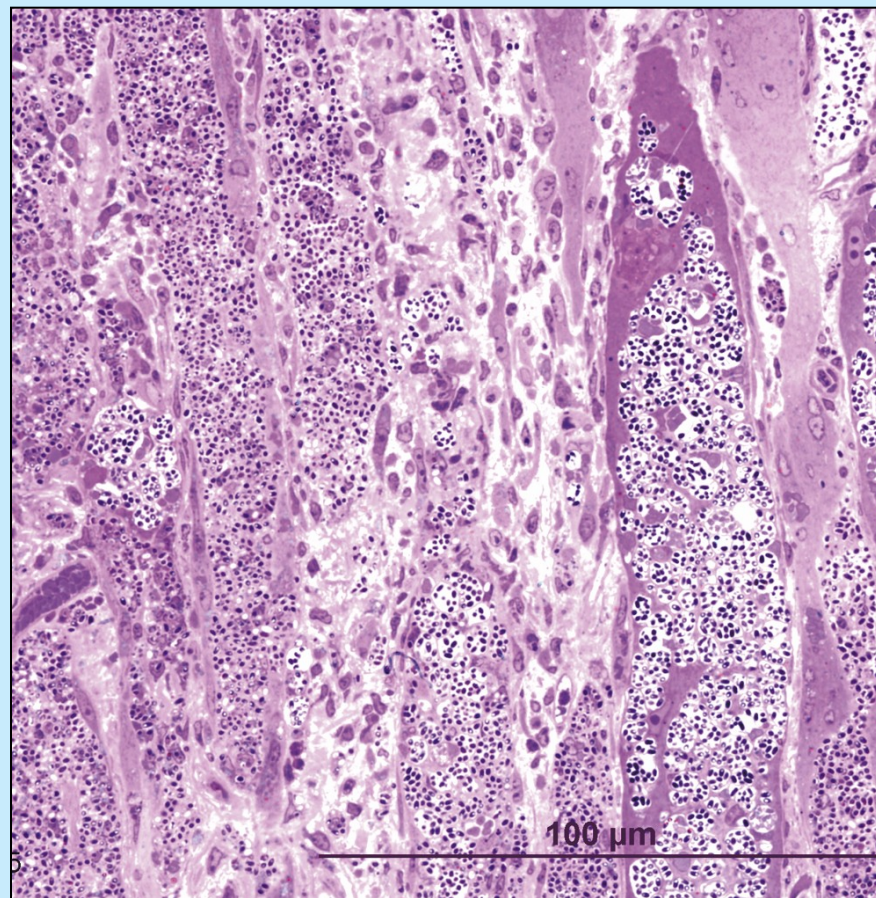
Mikrosporidie, *Pleistophora hypnessobryconis*, *Paracheiroidon inessi*





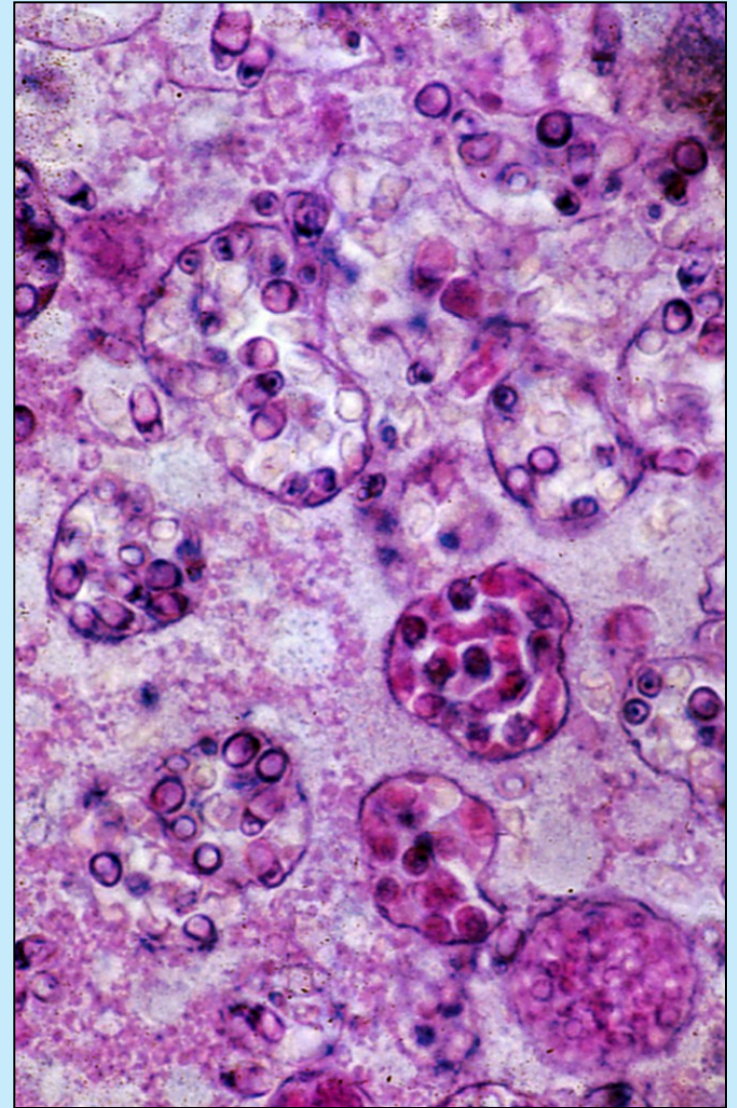
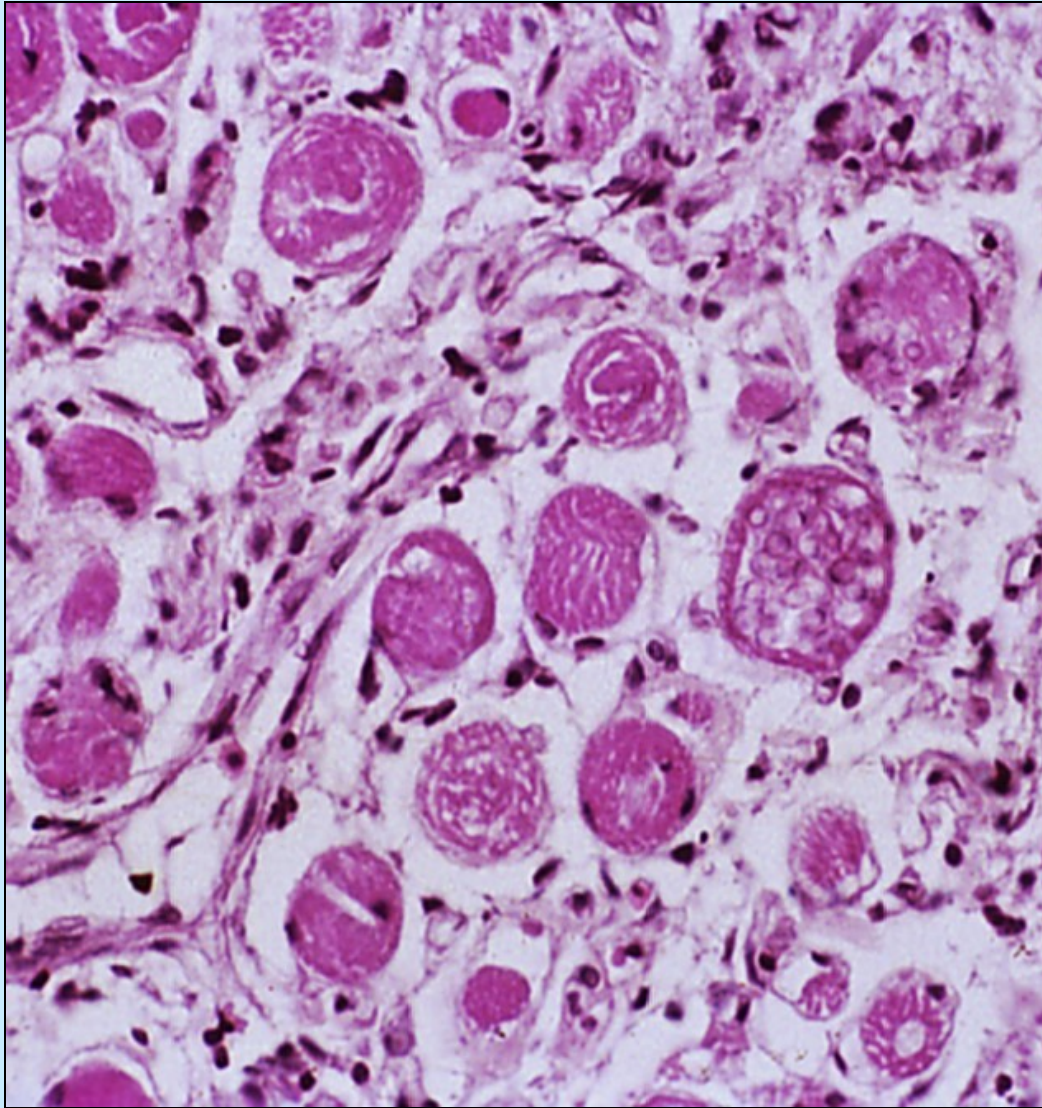


Neurčené mikrosporidie ve svalovině, polotenkové řezy, toluidinová modř + karmín

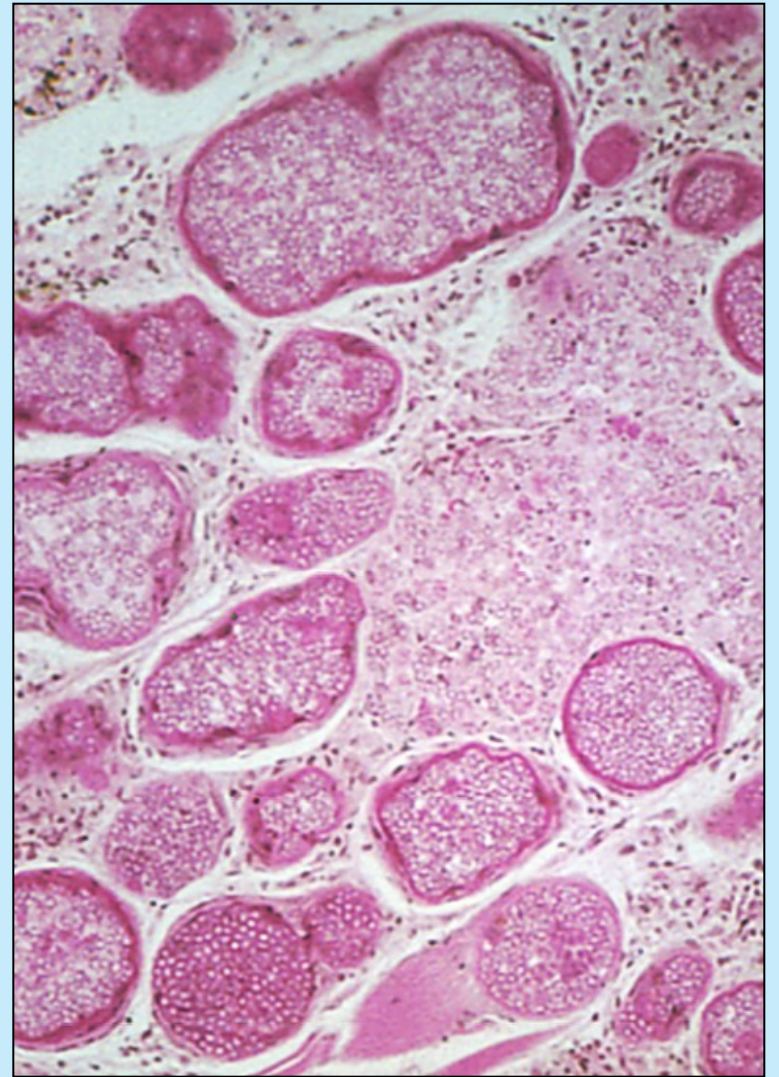
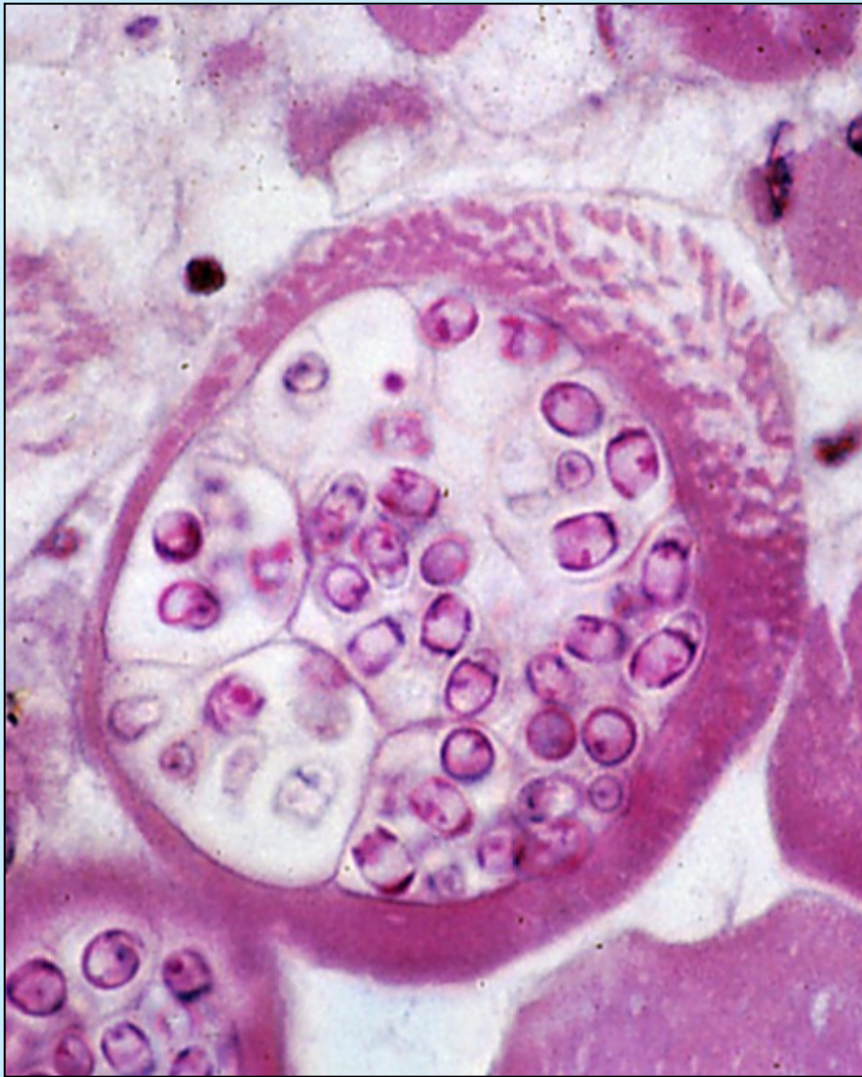




*Heterosporis schuberti* - *Ancistrus cirrhosus*, svalovina



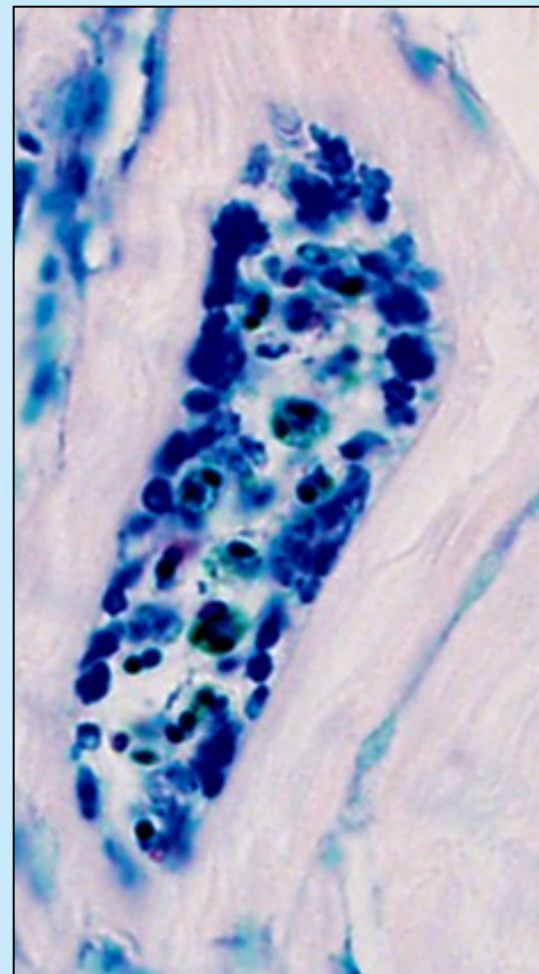
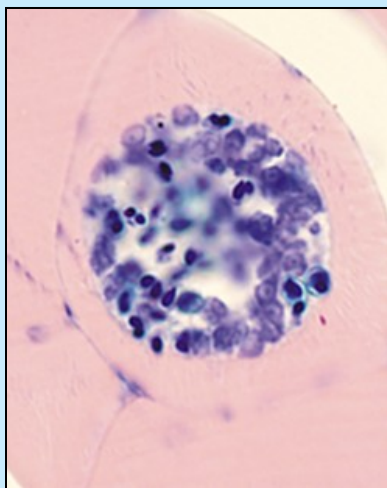
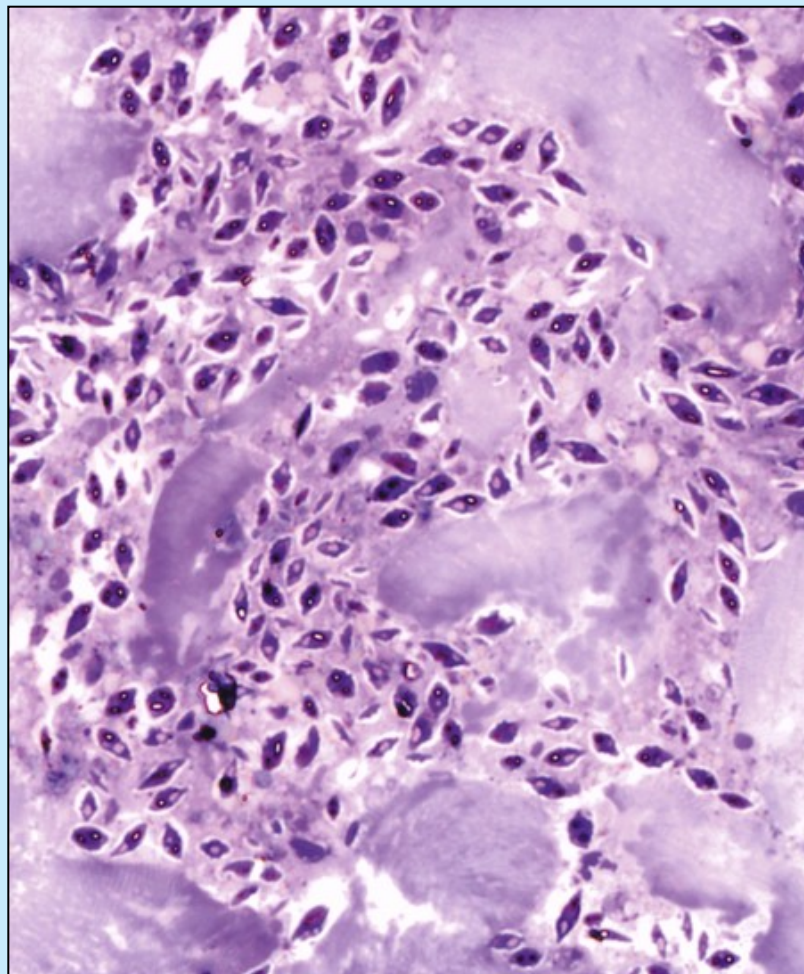
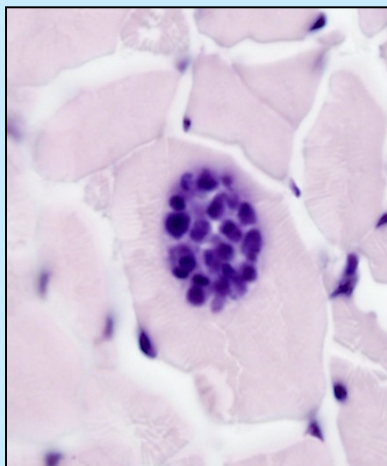




*Heterosporis schuberti* - *Ancistrus cirrhosus*, svalovina

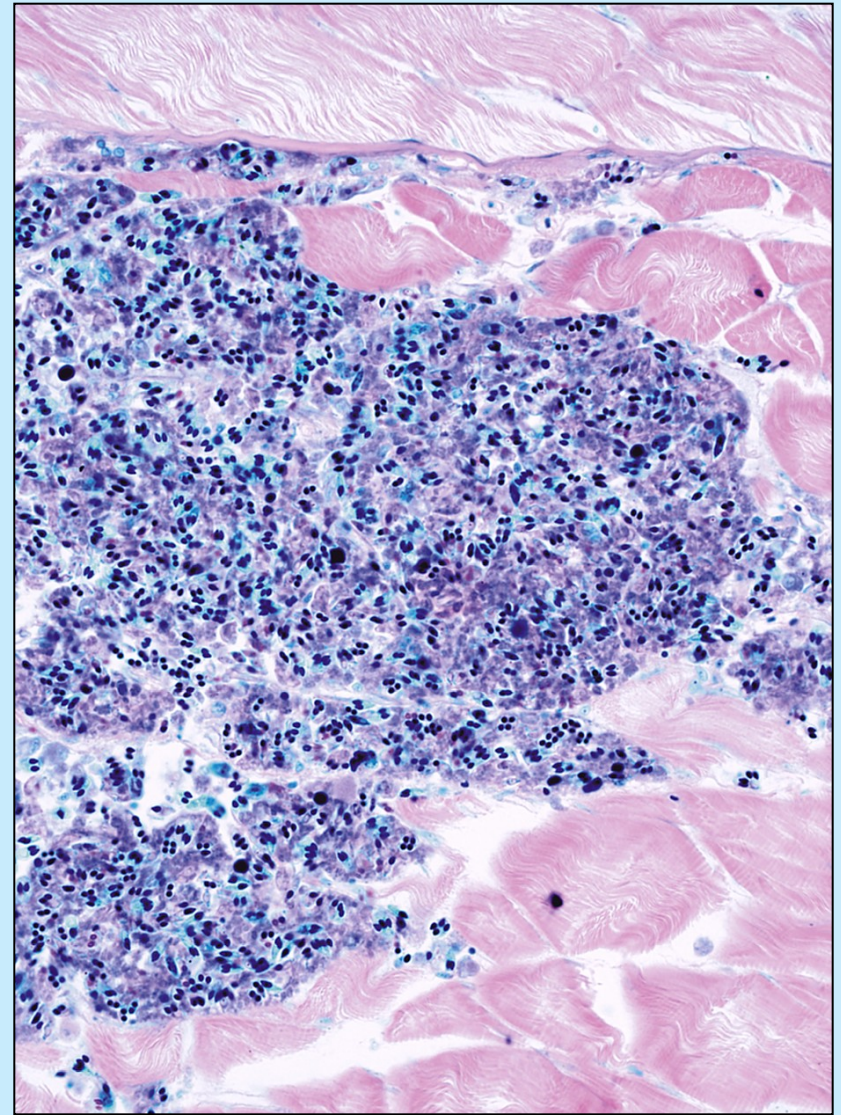
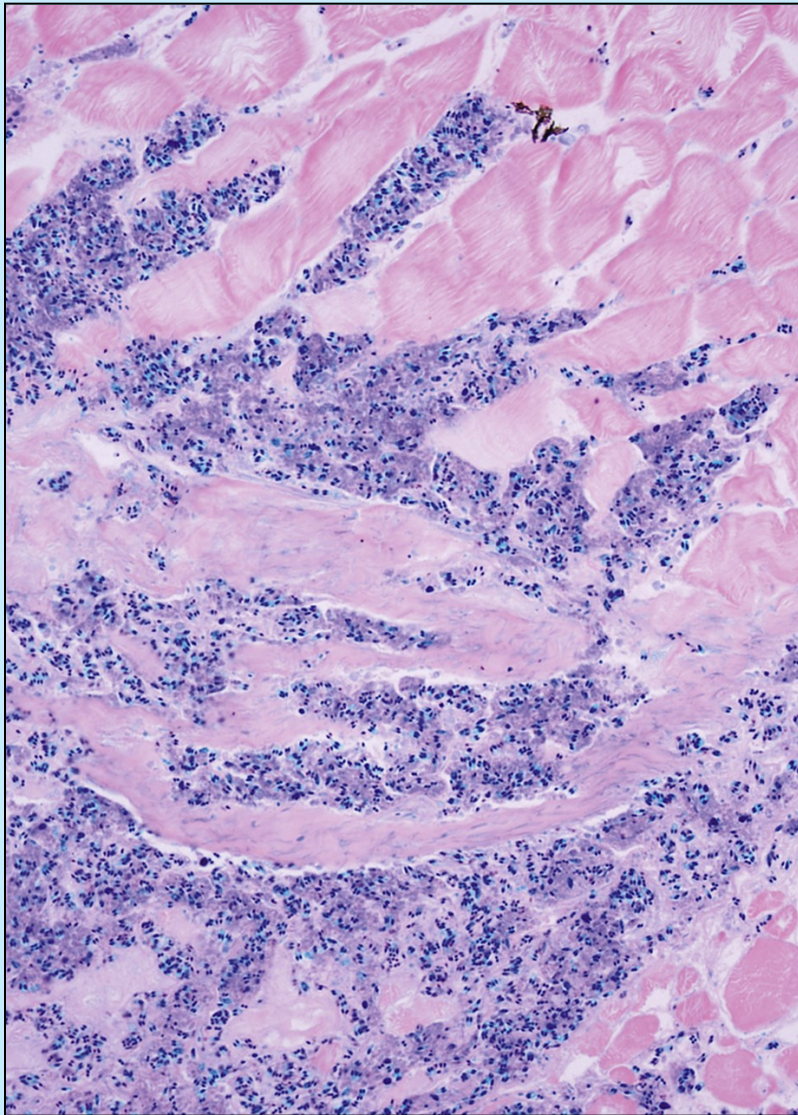


Myxosporidie, *Myxobolus cyprini*, *Cyprinus carpio*, svalovina



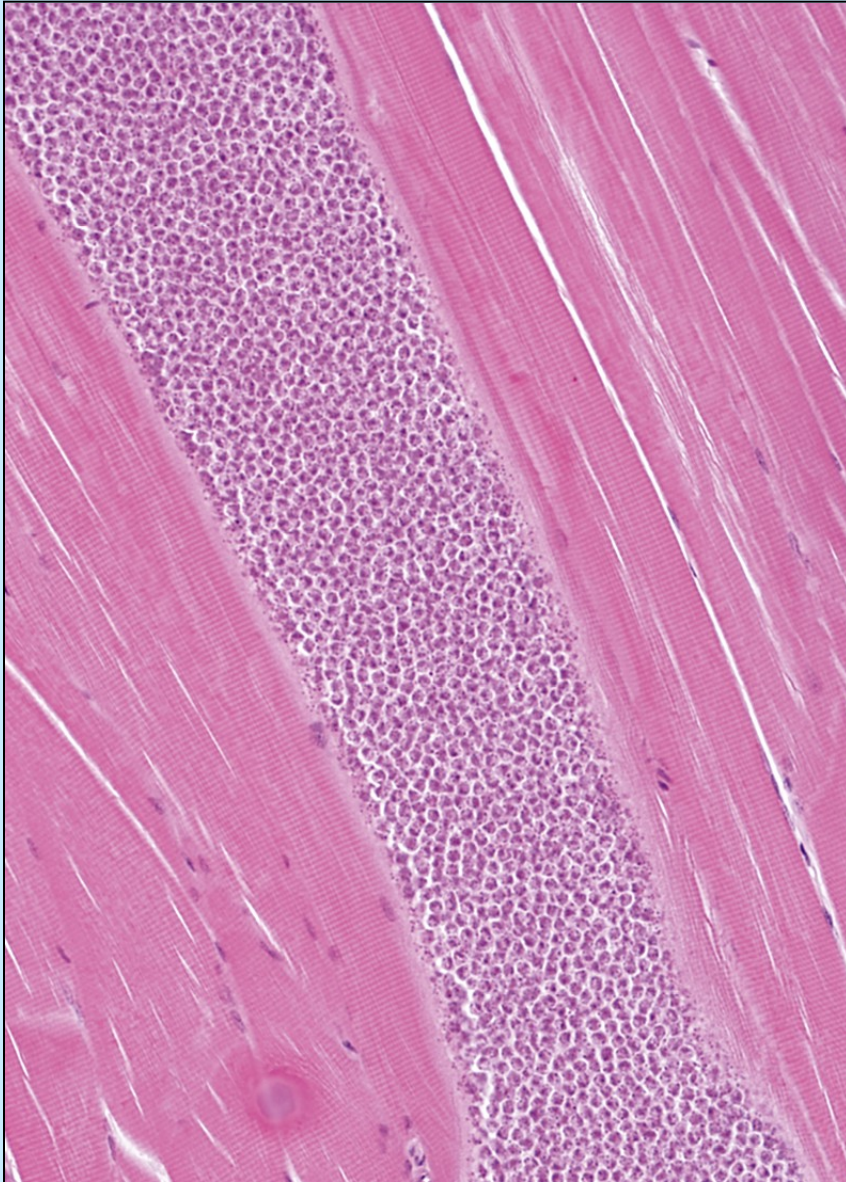


*Myxobolus lentisuturalis*, *Carassius gibelio*, svalovina

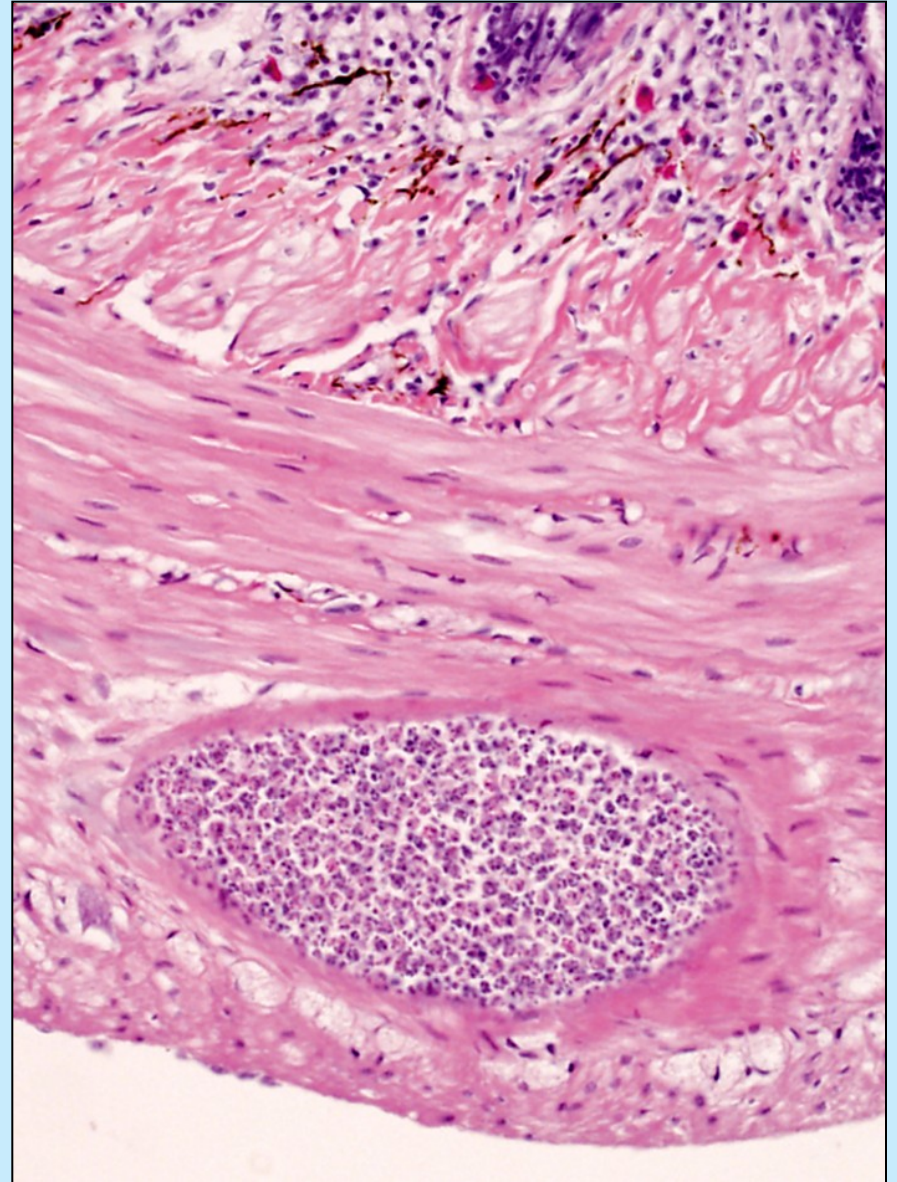




*Kudoa* spp., žíhaná a hladká svalovina



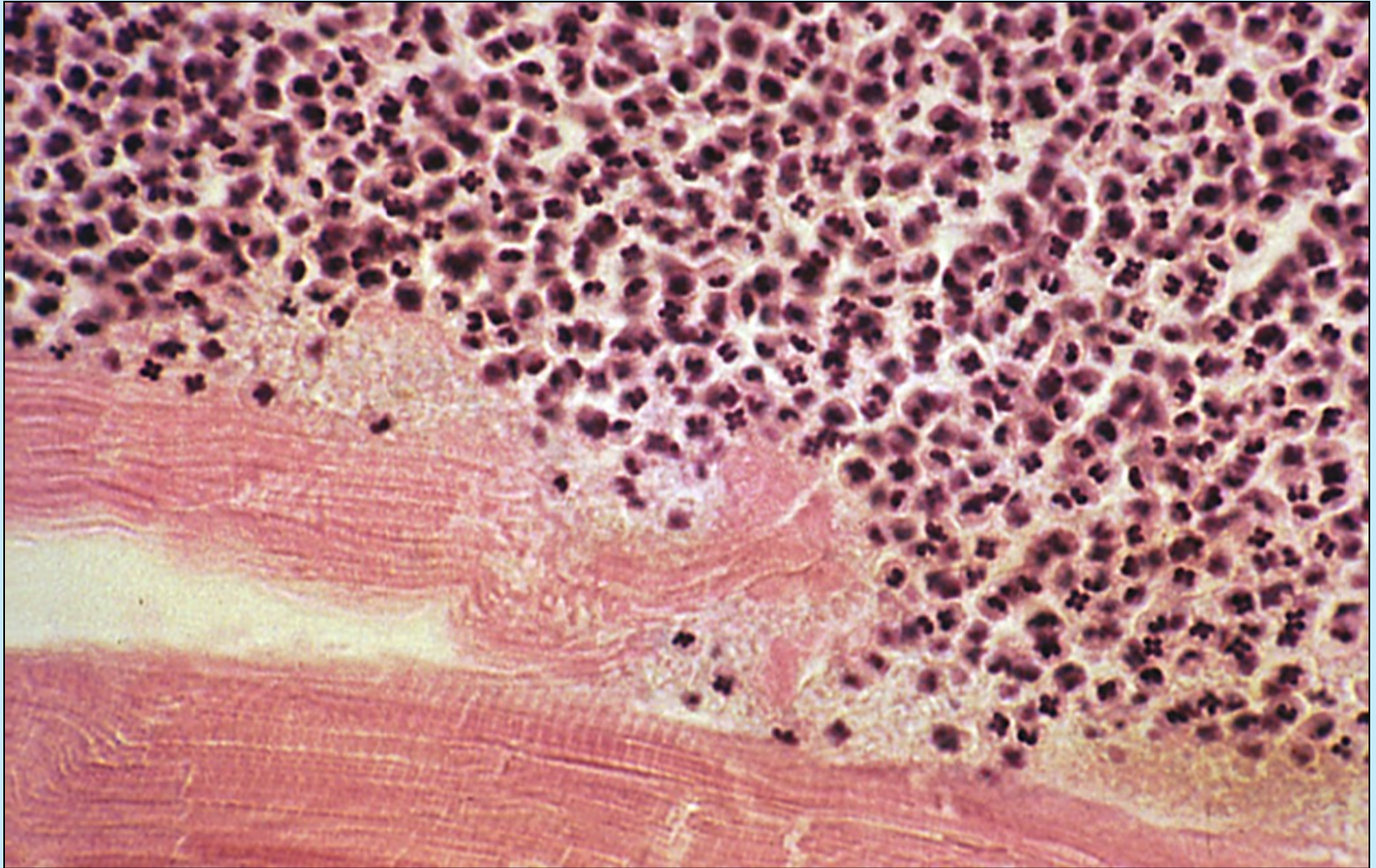
*Kudoa* sp. *Aplocheilus panchax*



*Kudoa ciliatae* 001



*Kudoa thyrsites*

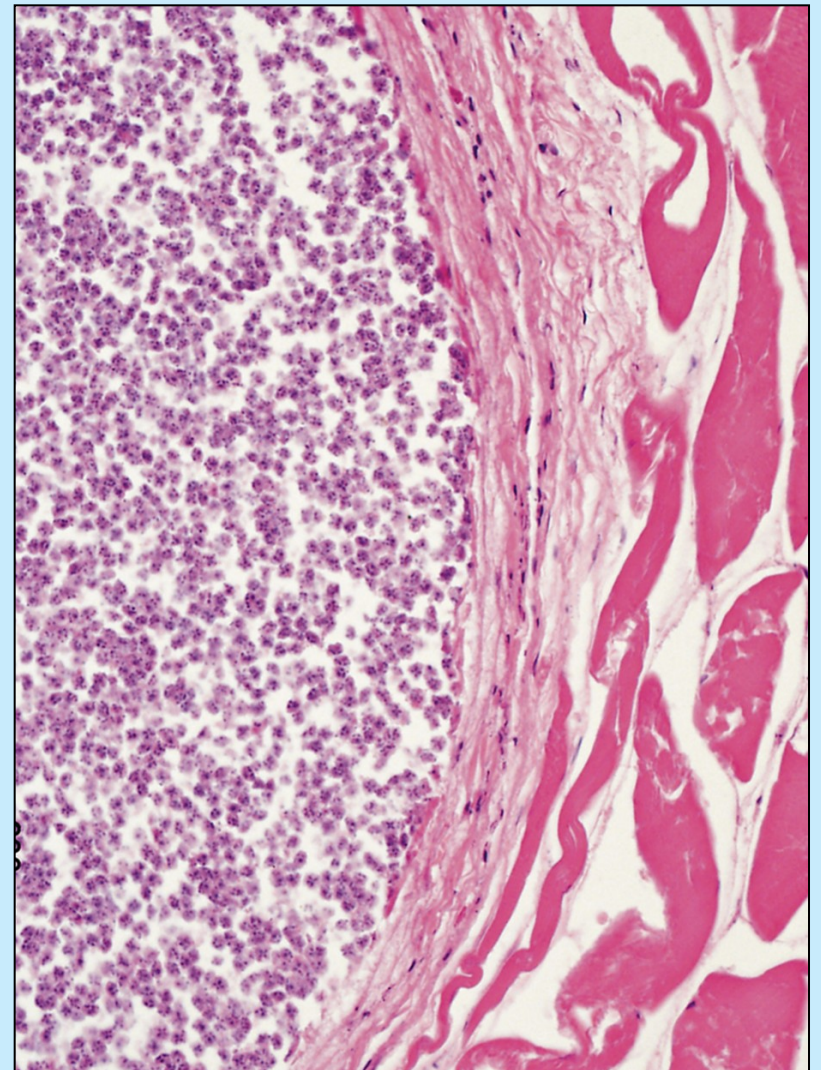




*Kudoa* spp., kosterní svalovina

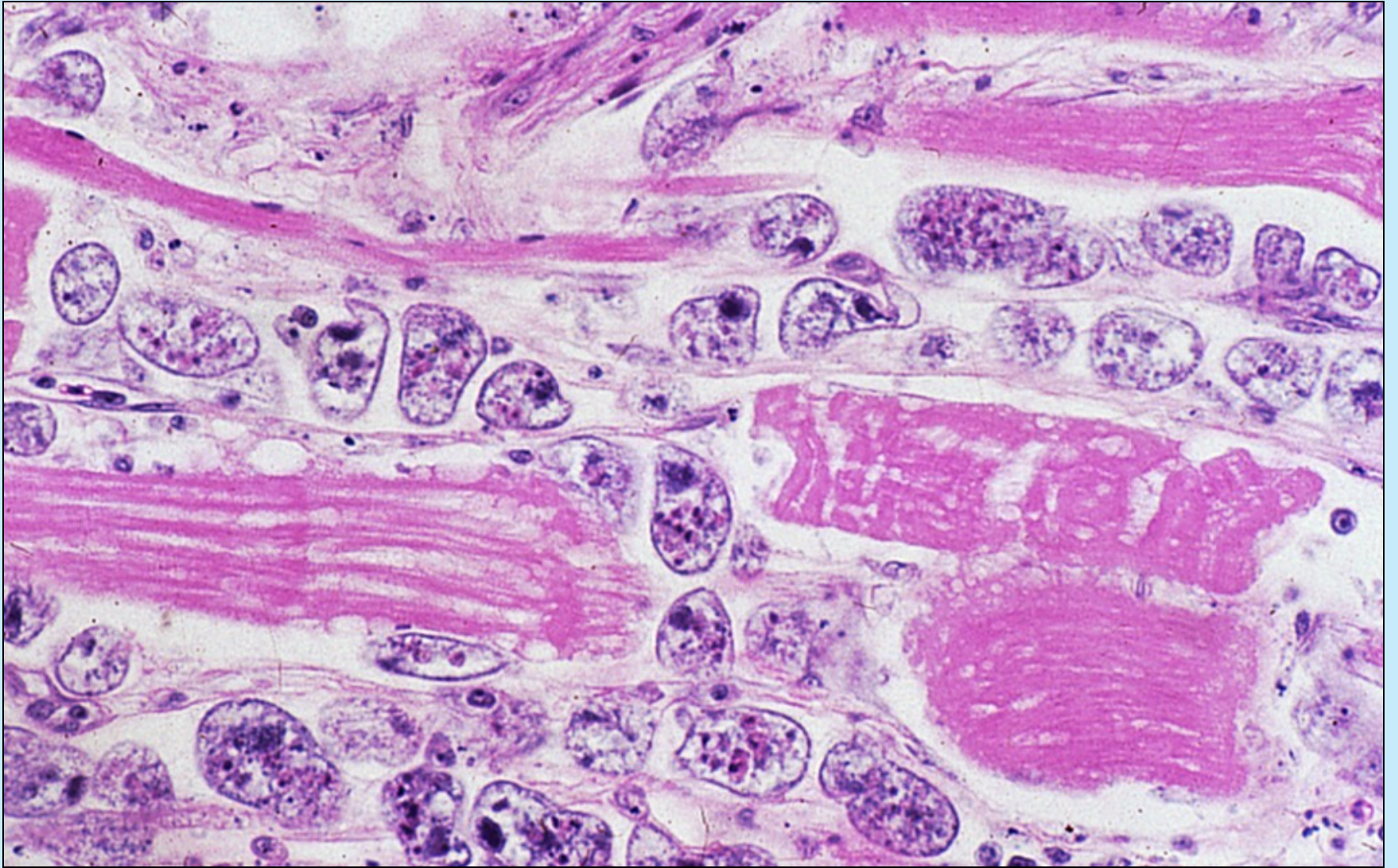


*Fundulus grandis* 001



*Thunnus* sp.





Scuticociliatida, *Psetta maxima*, *Uronema* sp.



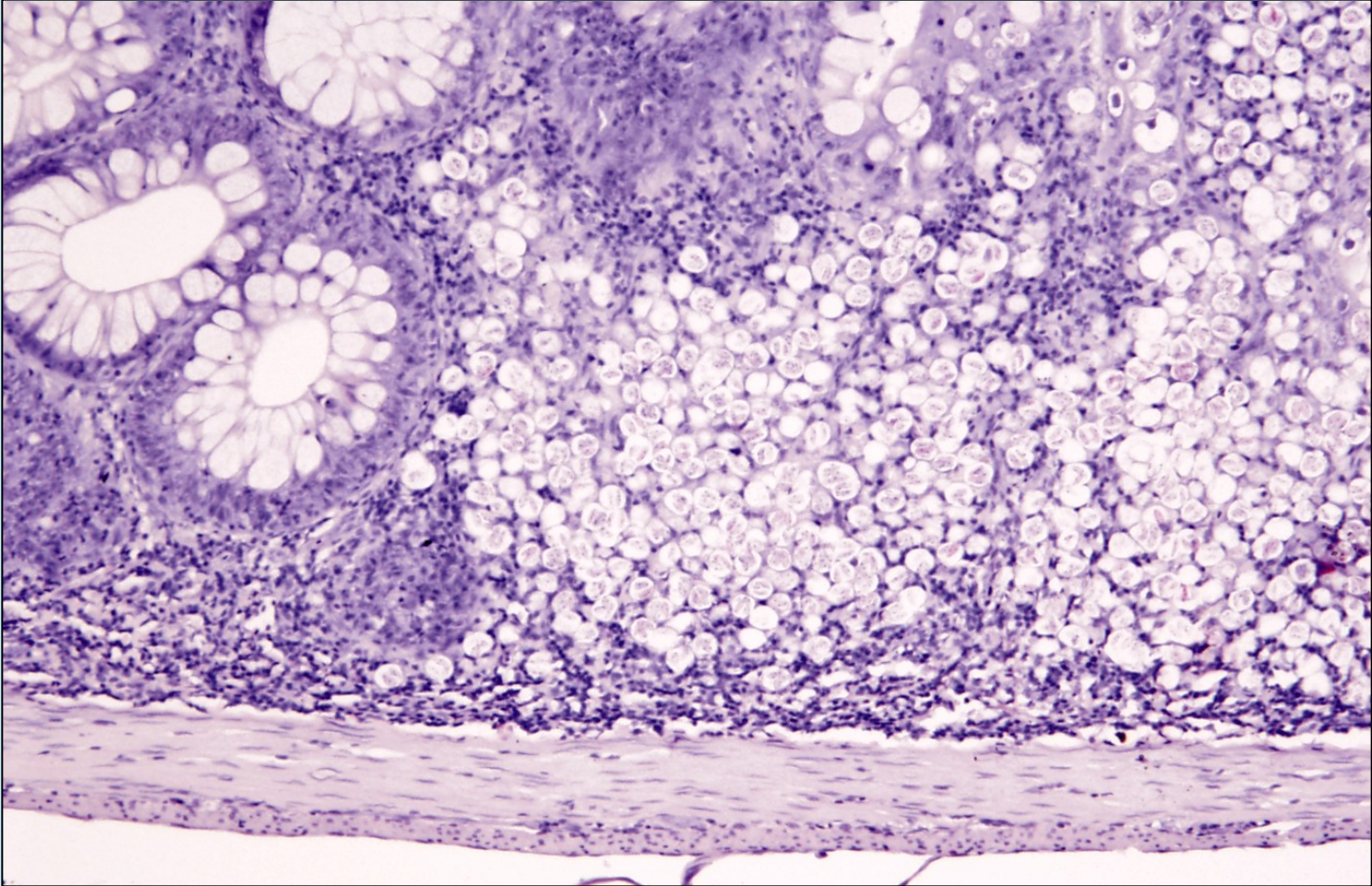
# Trávicí soustava

*Hexamita salmonis*, *Plecoglossus altivelis*



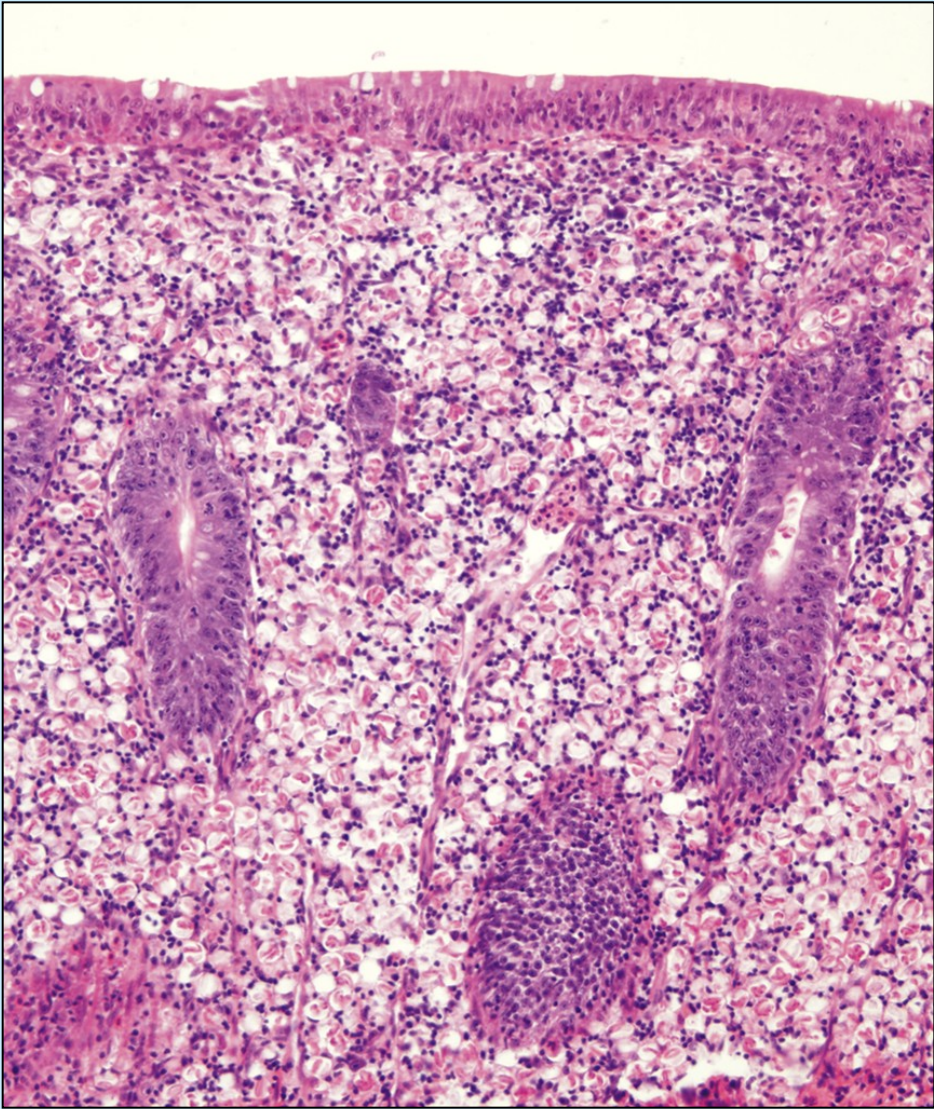


Kokcidie, *Goussia subepithelialis*, *Cyprinus carpio*

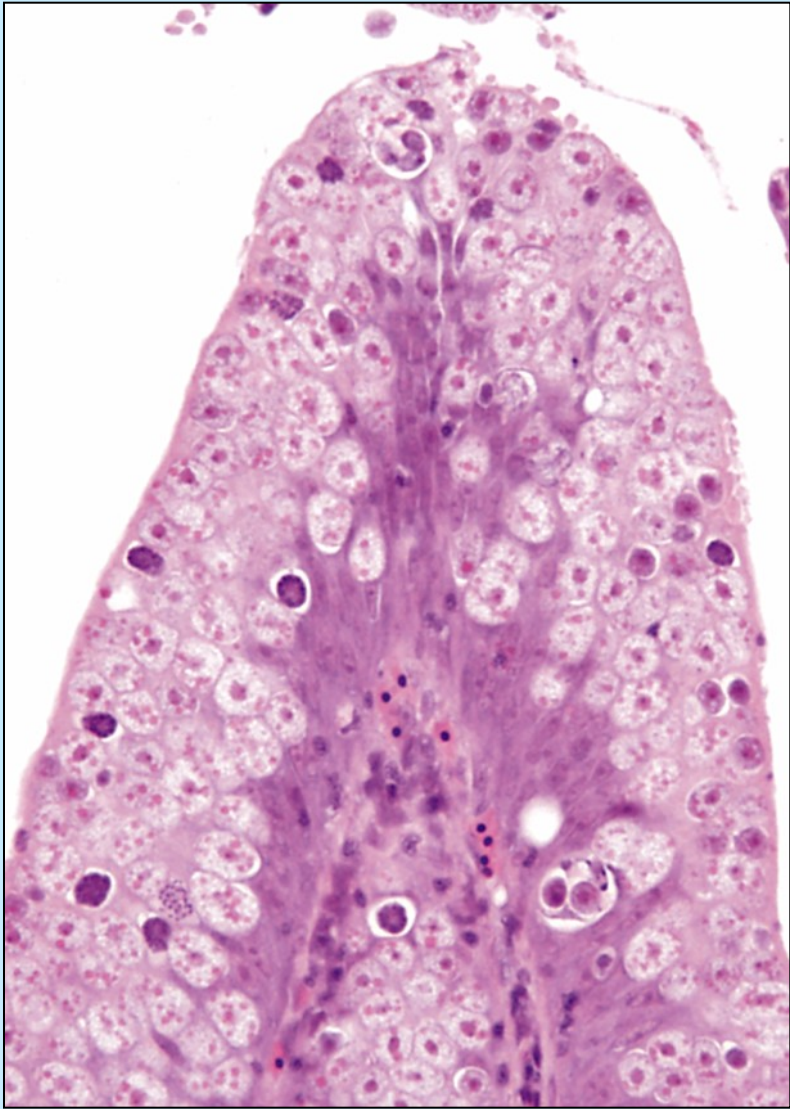




*Goussia subepithelialis*, *C. carpio*

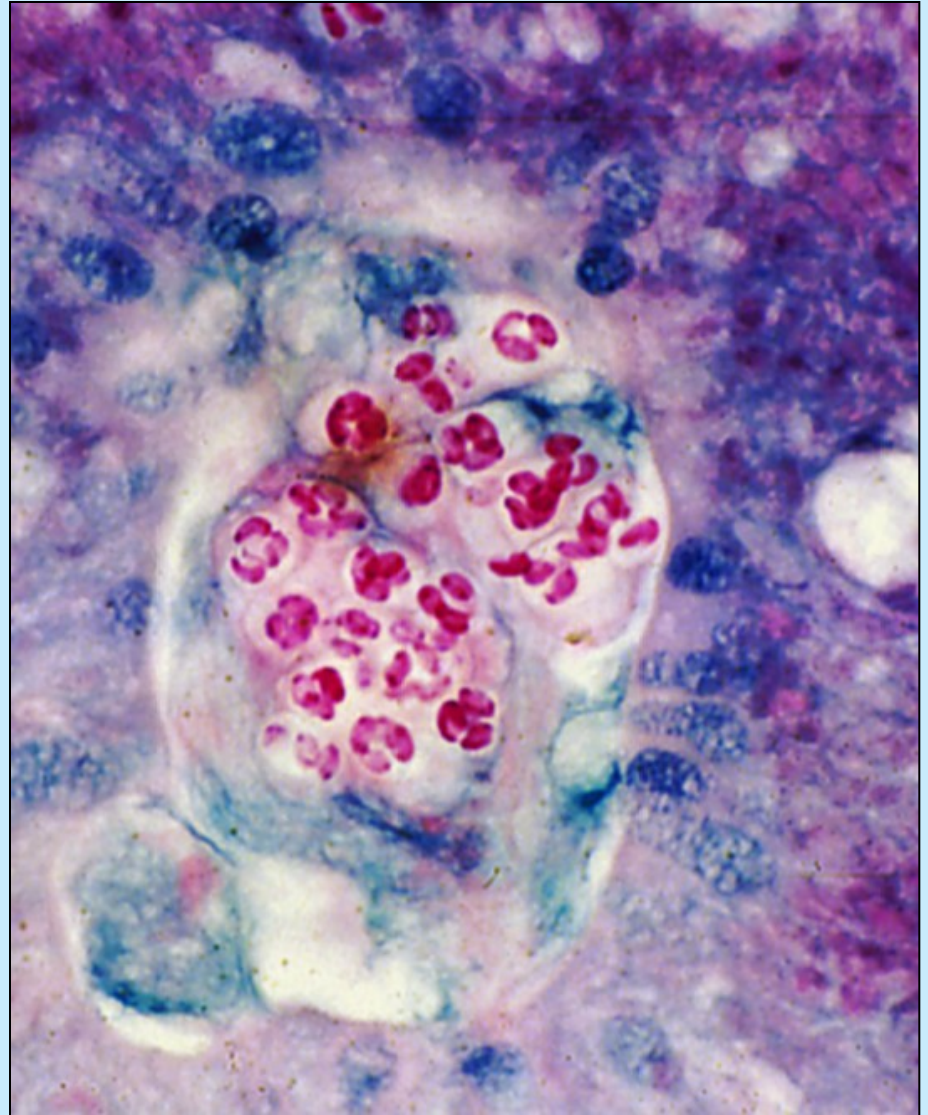
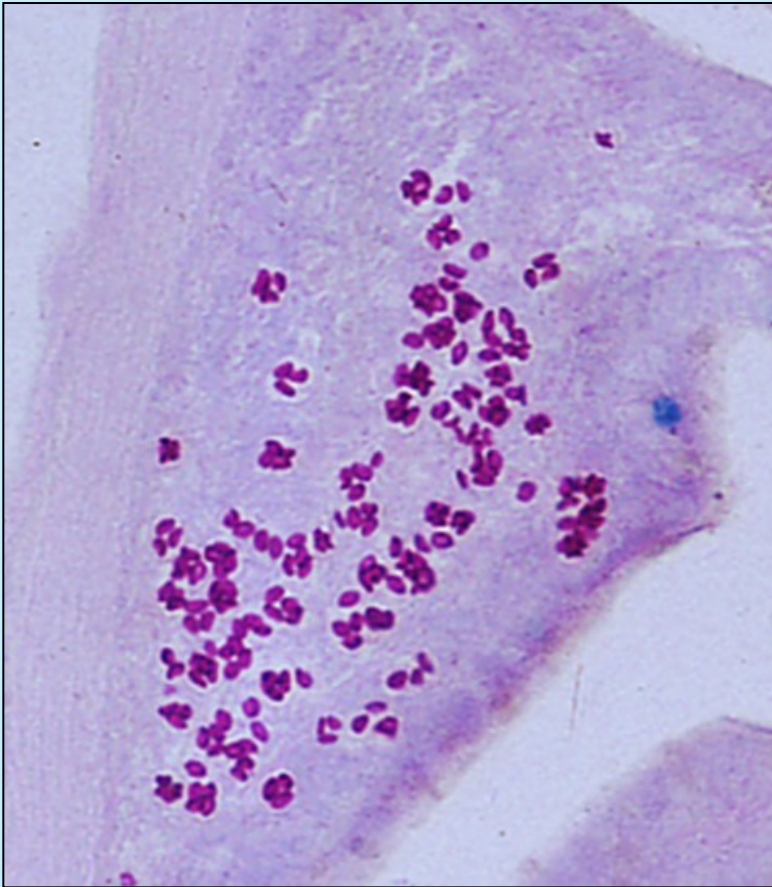


*Goussia* sp. *Rutilus rutilus*



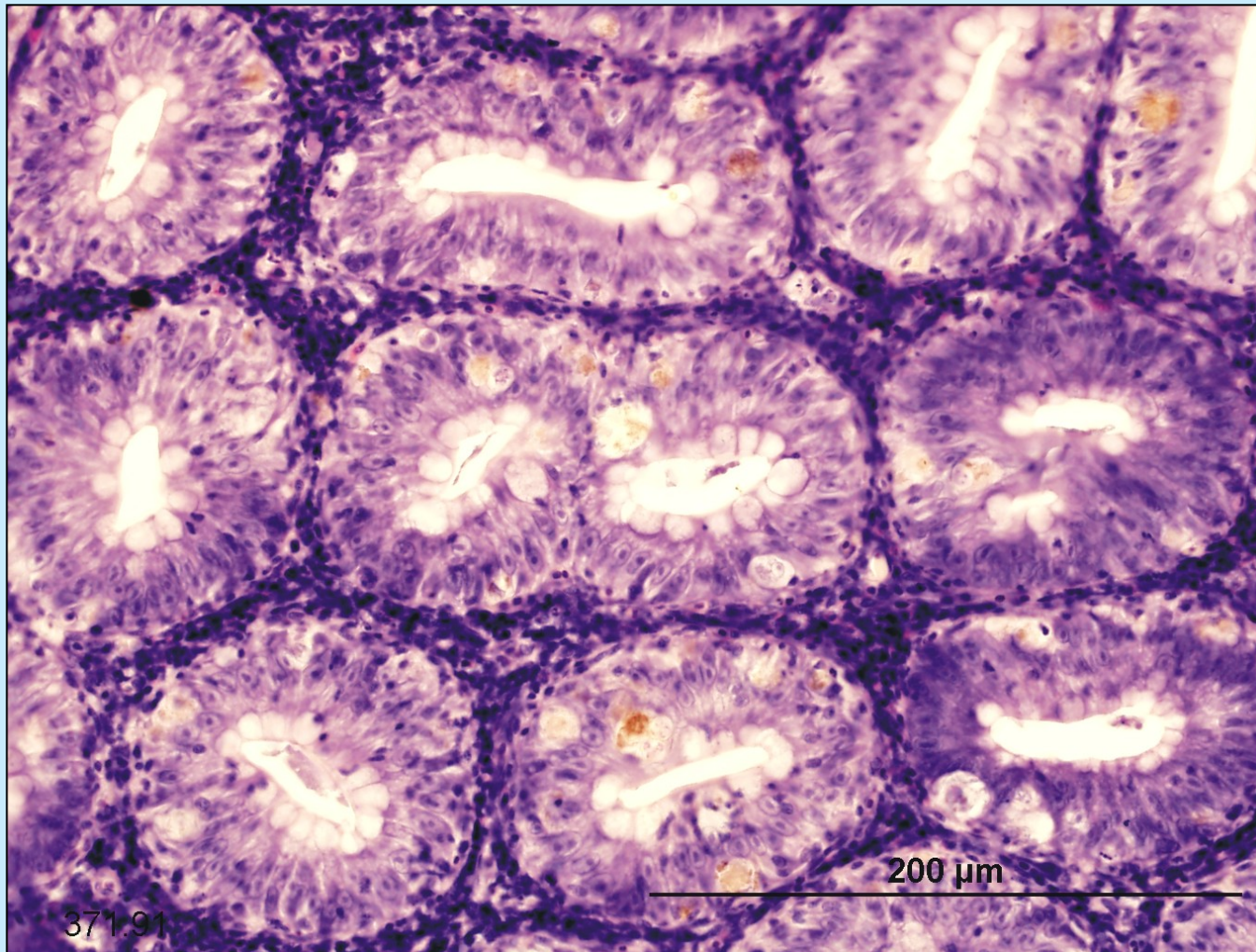


*Eimeria cyprini*, *Cyprinus carpio*,  
vizualizace sporocyst – Giemsa, ZN



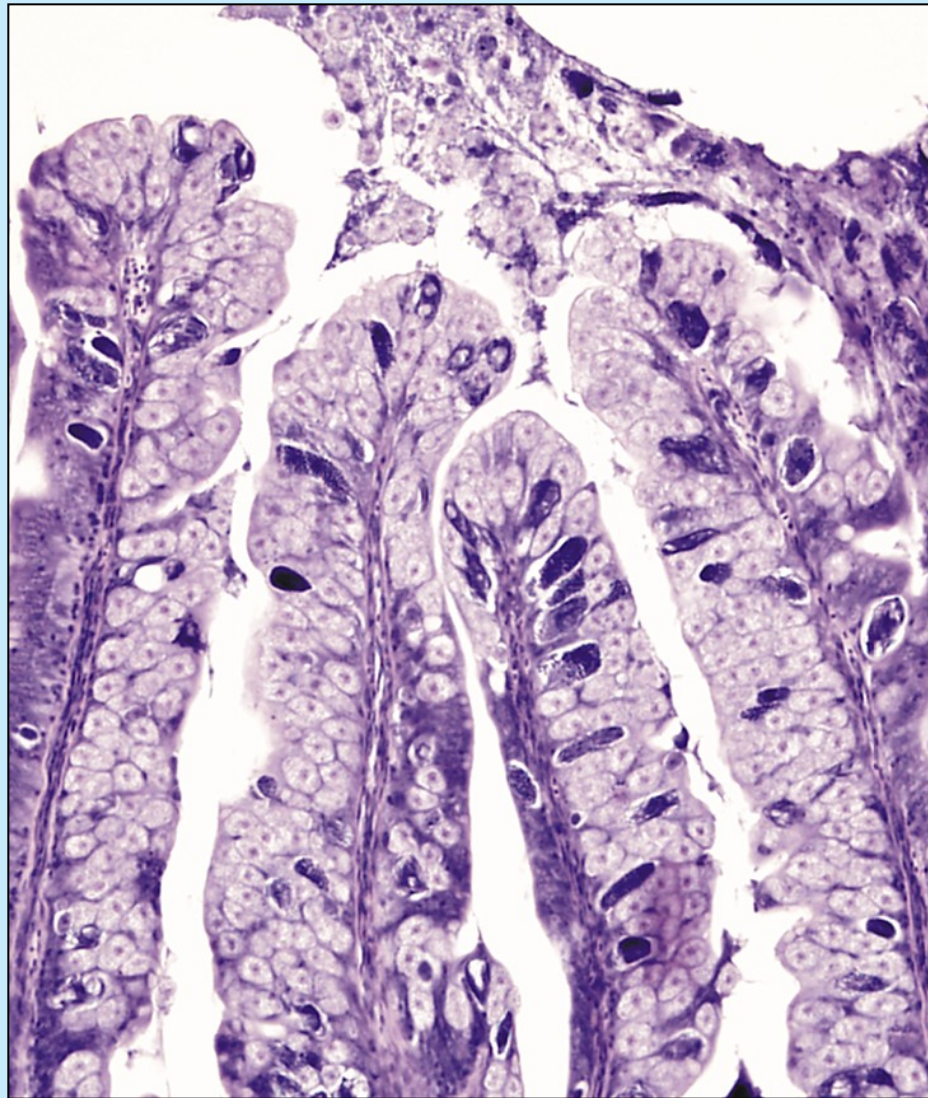
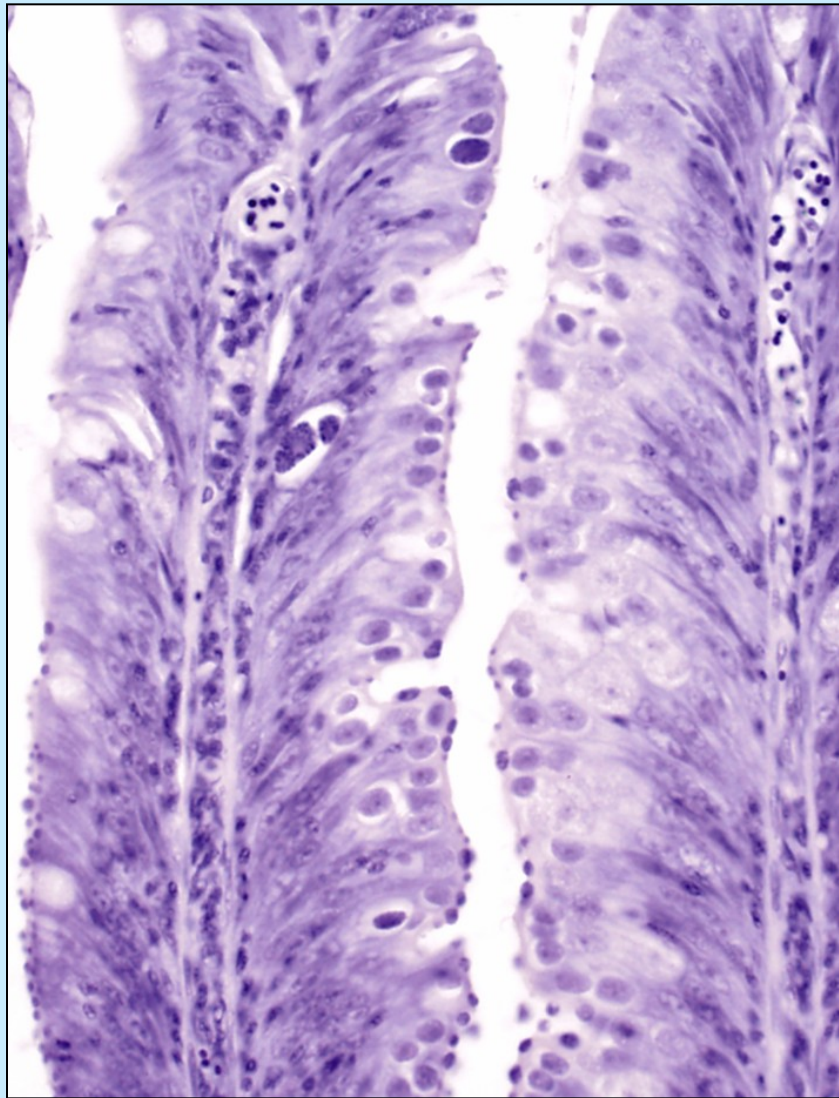


*Eimeria cyprini*, žlutá tělíška, *Cyprinus carpio*, střevo

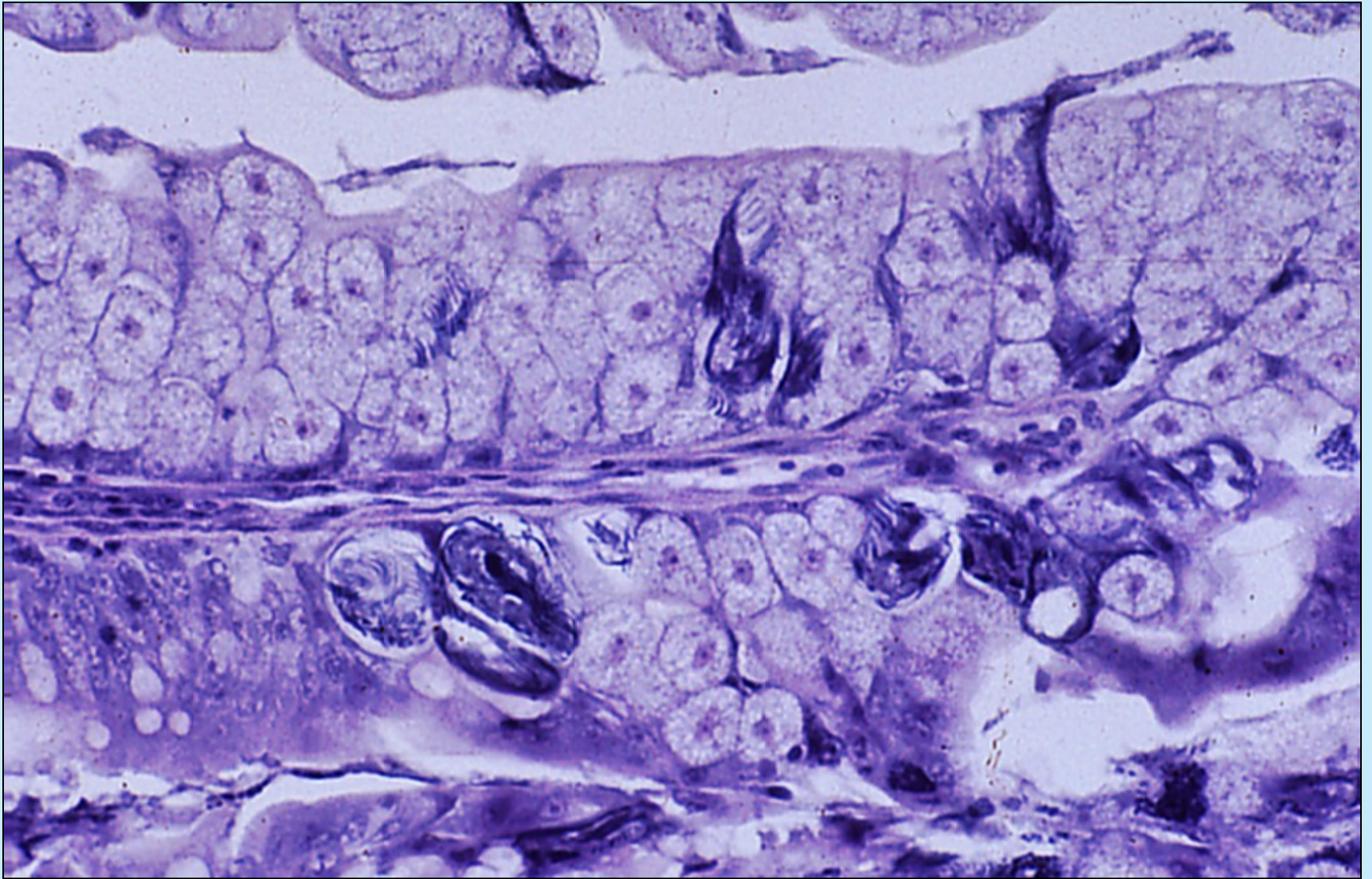




## Kokcidie, extra- a intracytoplasmatická stadia

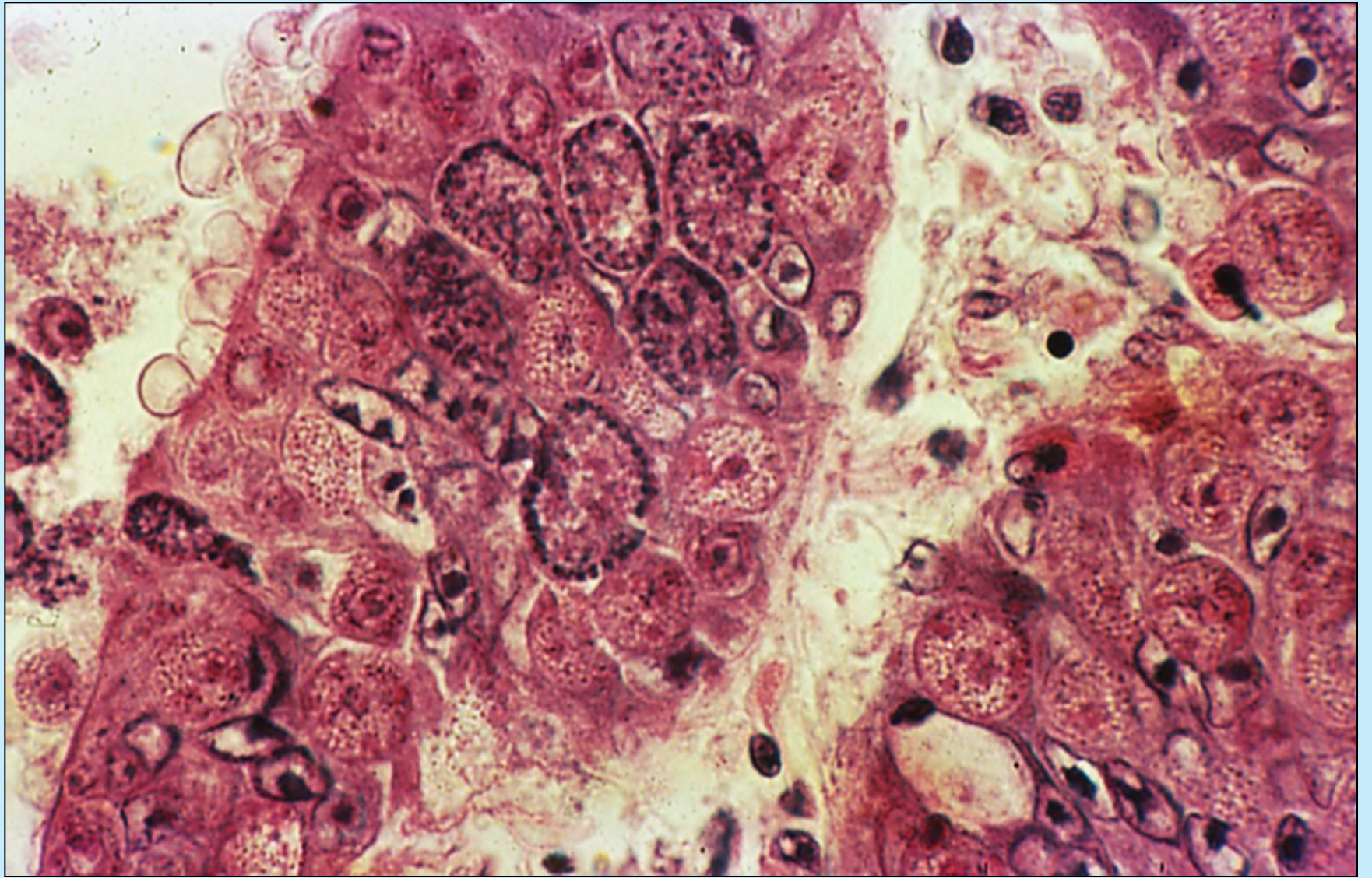






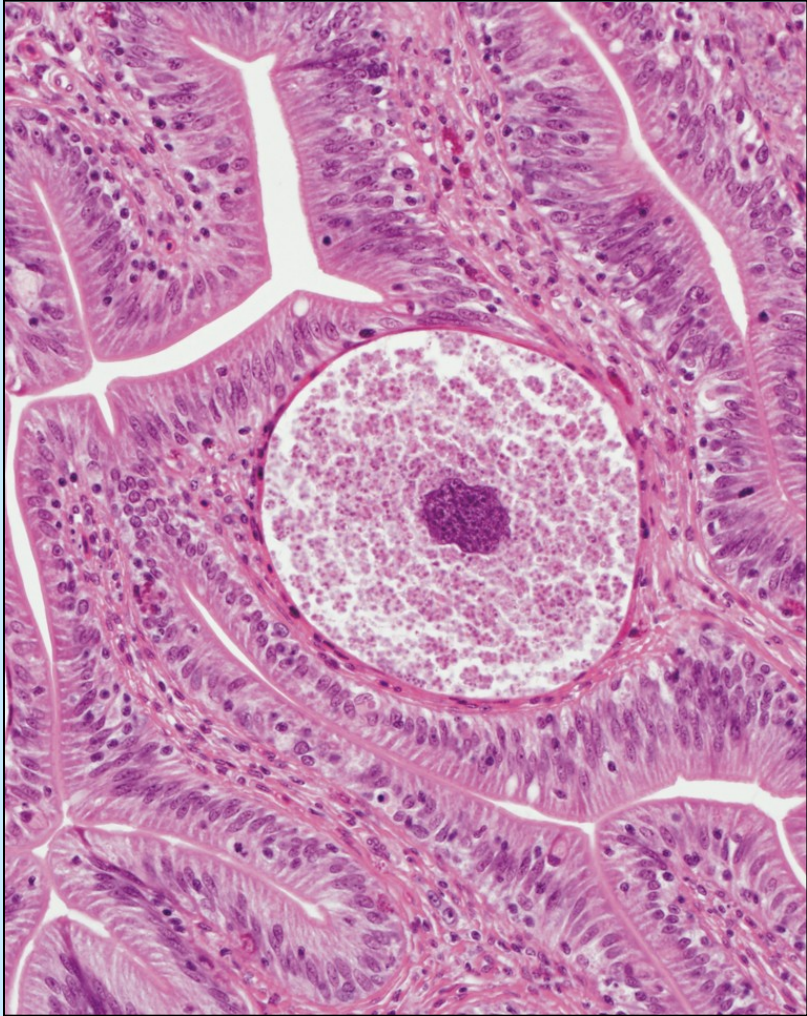
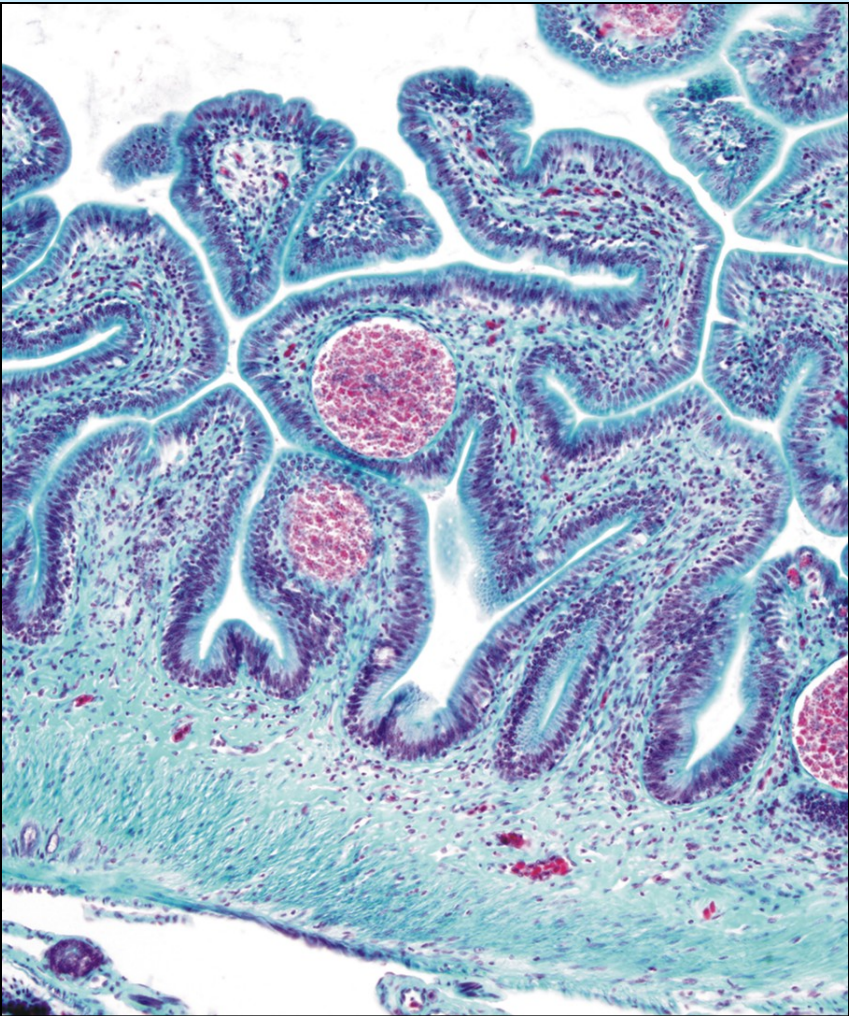
Střevní kokcidióza, masivní infekce, makrogametogeneze a mikrogametogeneze







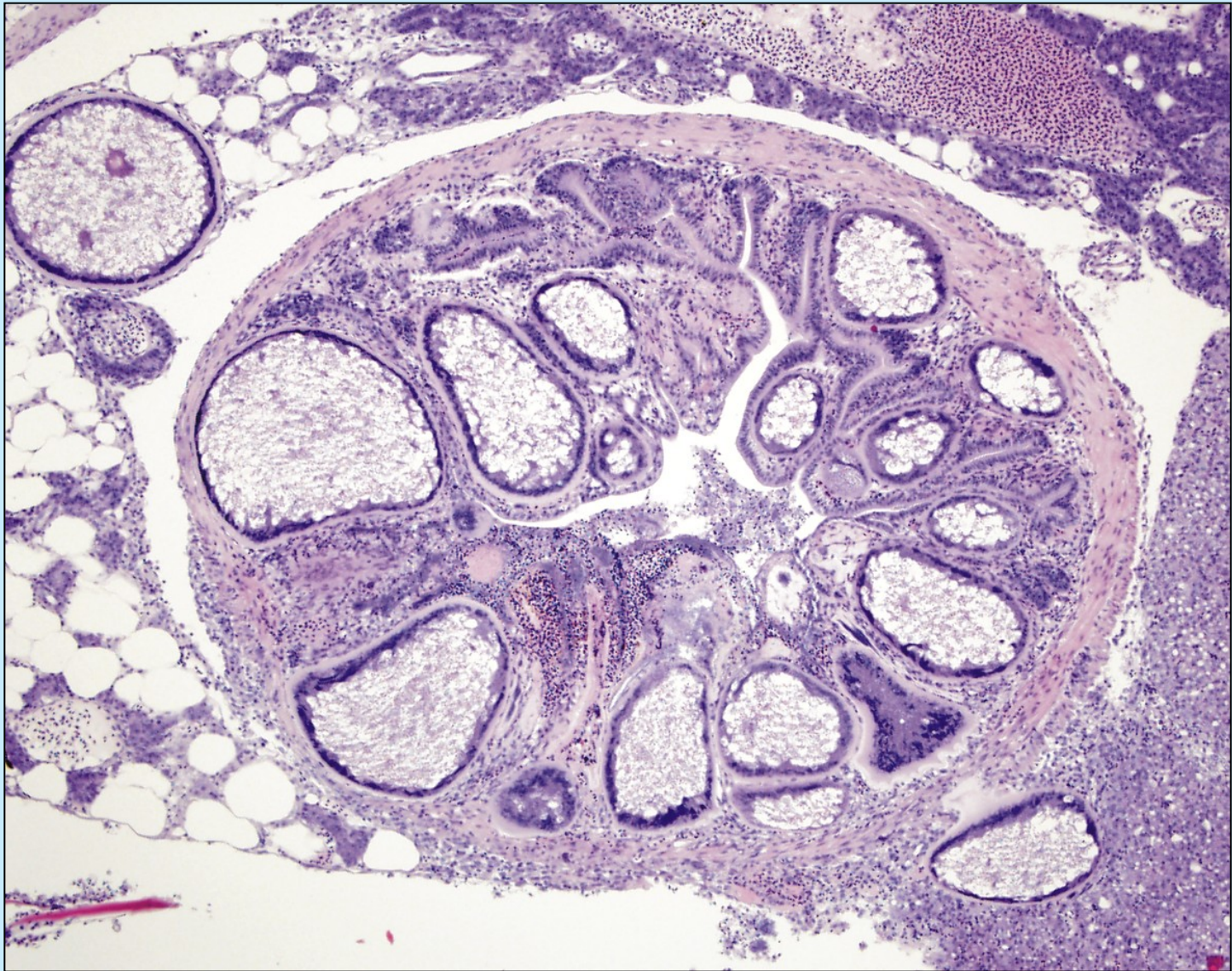
# Mikrosporidie



*Glugea / Loma acerinae – Gymnocephalus cernuus*

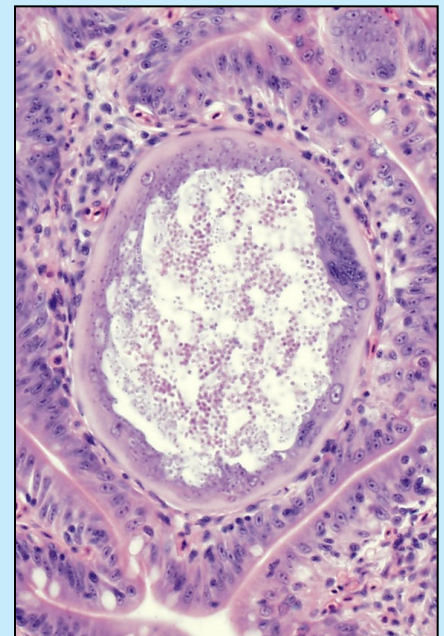
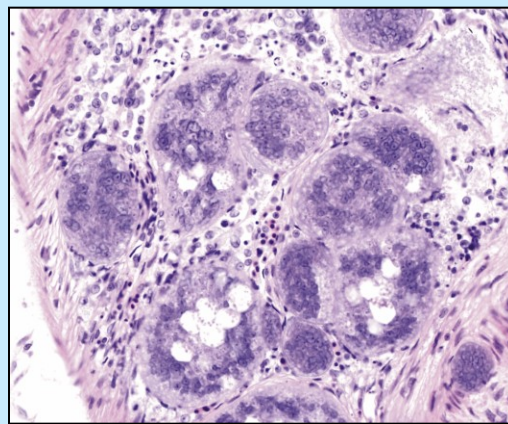
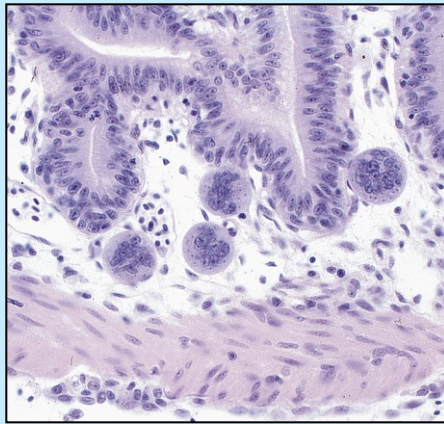
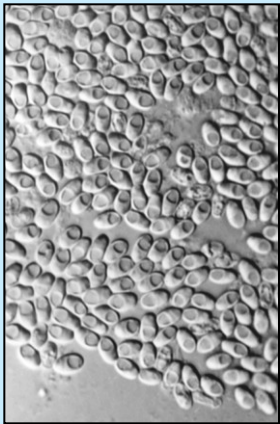


*Glugea anomala*, *Nothobranchius* sp.



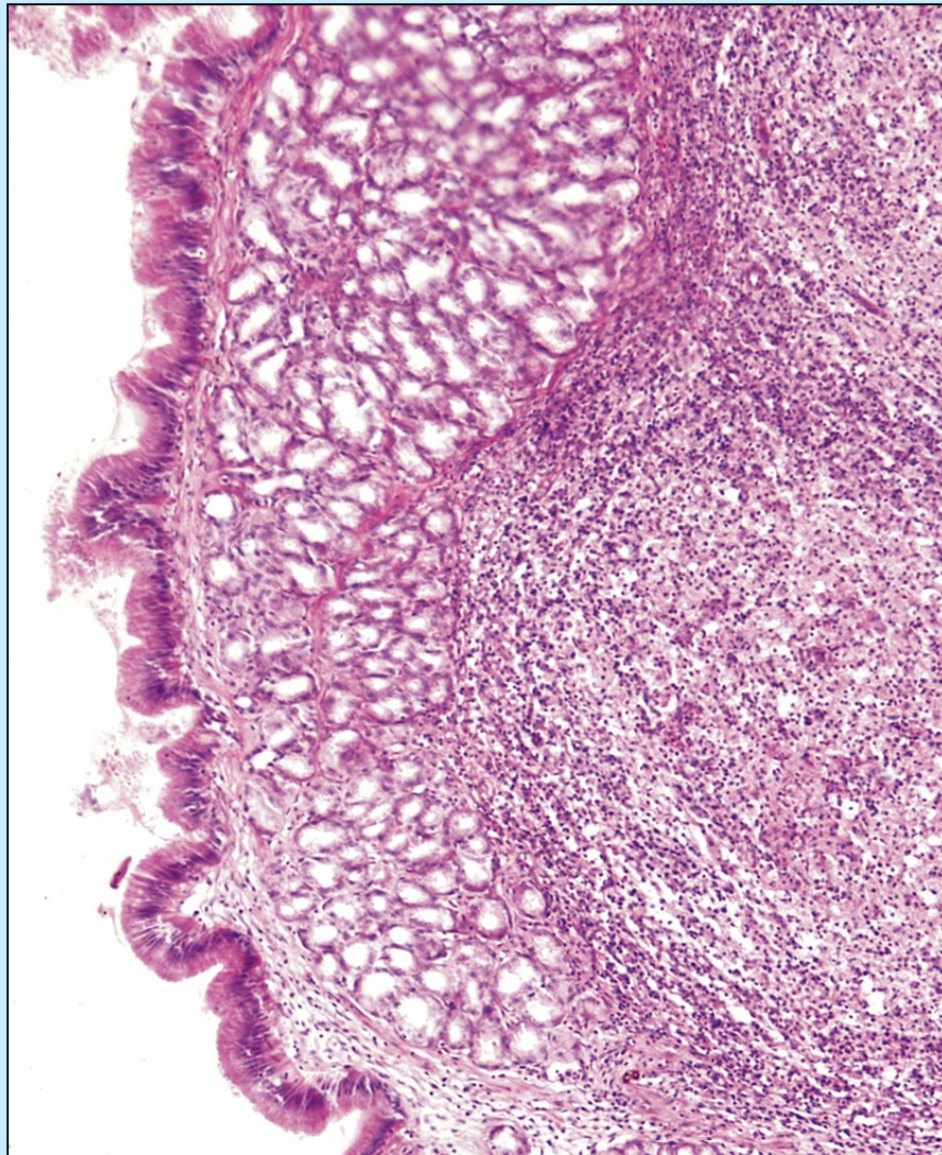


*Glugea anomala*, xenomy – v průběhu vývoje zvětšují objem až 200x



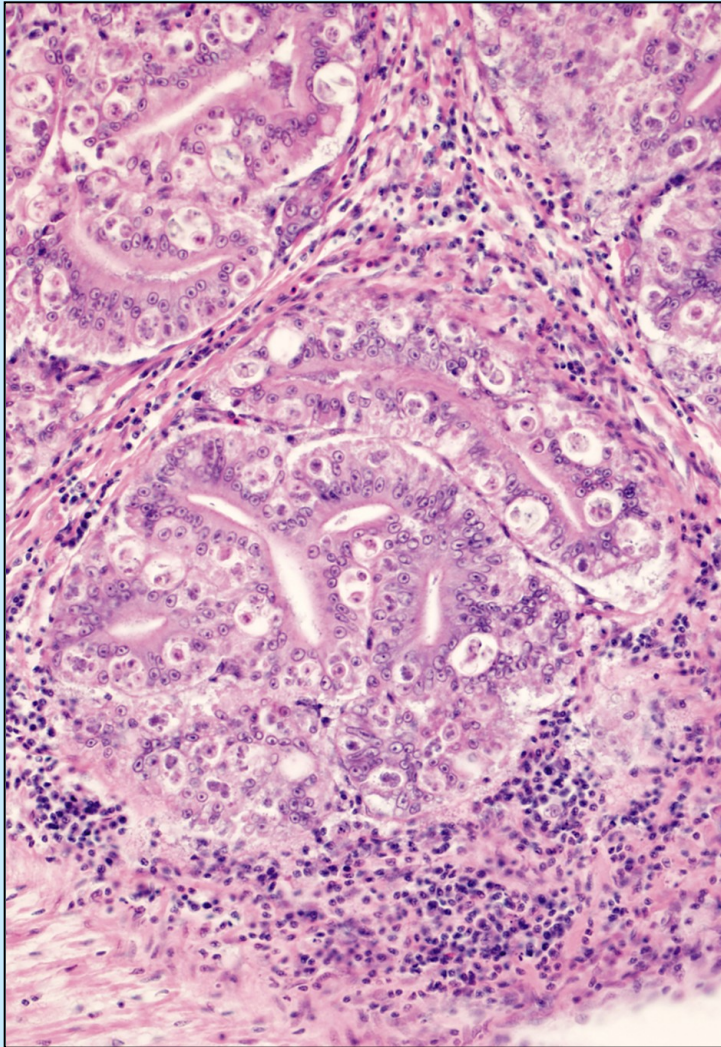


*Glugea anomala* - *Gasterosteus aculeatus*, likvidace xenomů, granulomatozní zánětlivá reakce hostitele





*Enteromyxum / Myxidium leei, Sparus aurata*





# Metacerkarie trematodů v játrech a střevě

