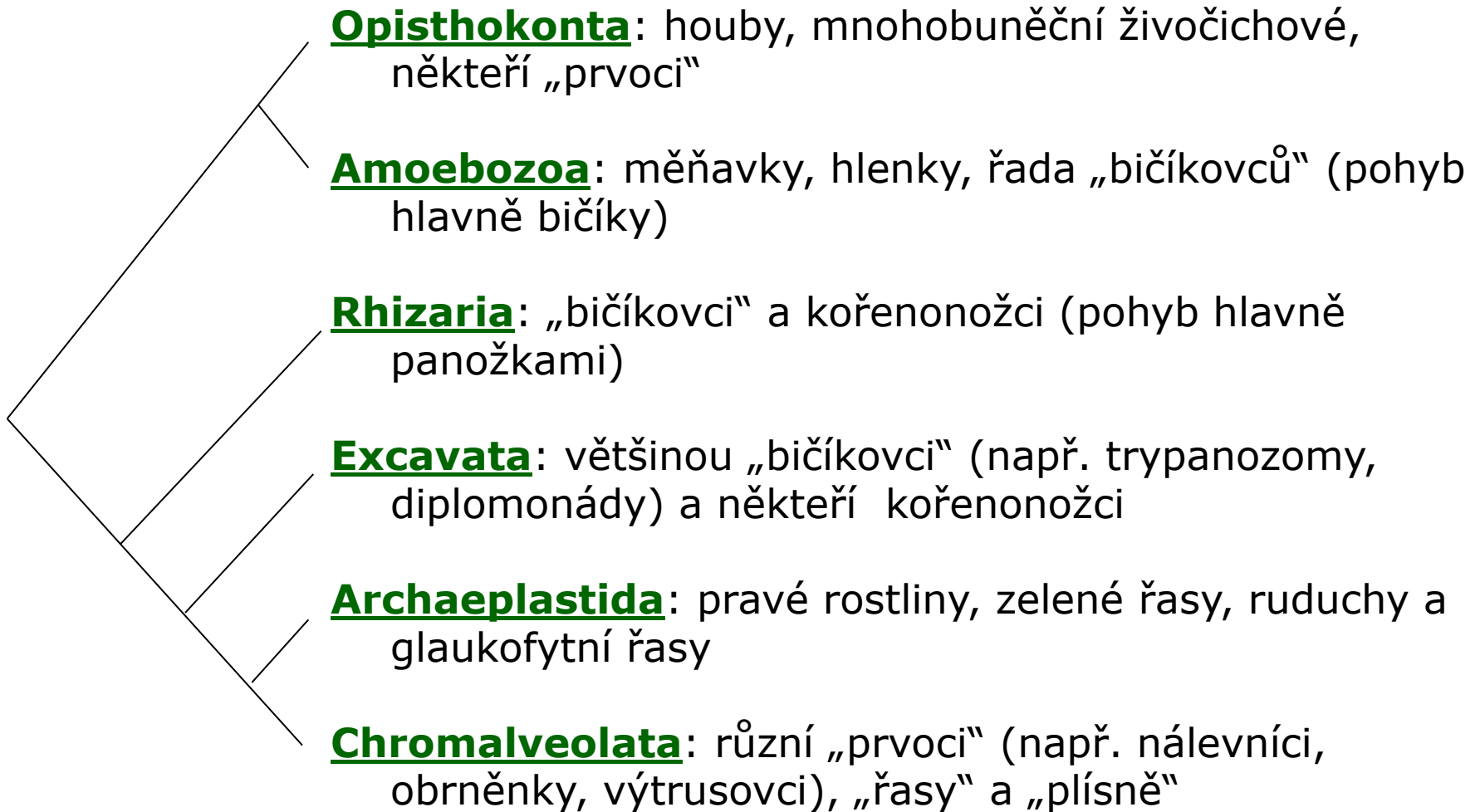


Fylogenetické dělení eukaryot – nové: 6-8 „říší“



Animalia = Metazoa

„Porifera“

Eumetazoa

Hexactinellida

Demospongia

Calcispongia
= Calcarea

Ctenophora

Placozoa

Cnidaria

Bilateria

Choanoflagellata,
Ministeriida

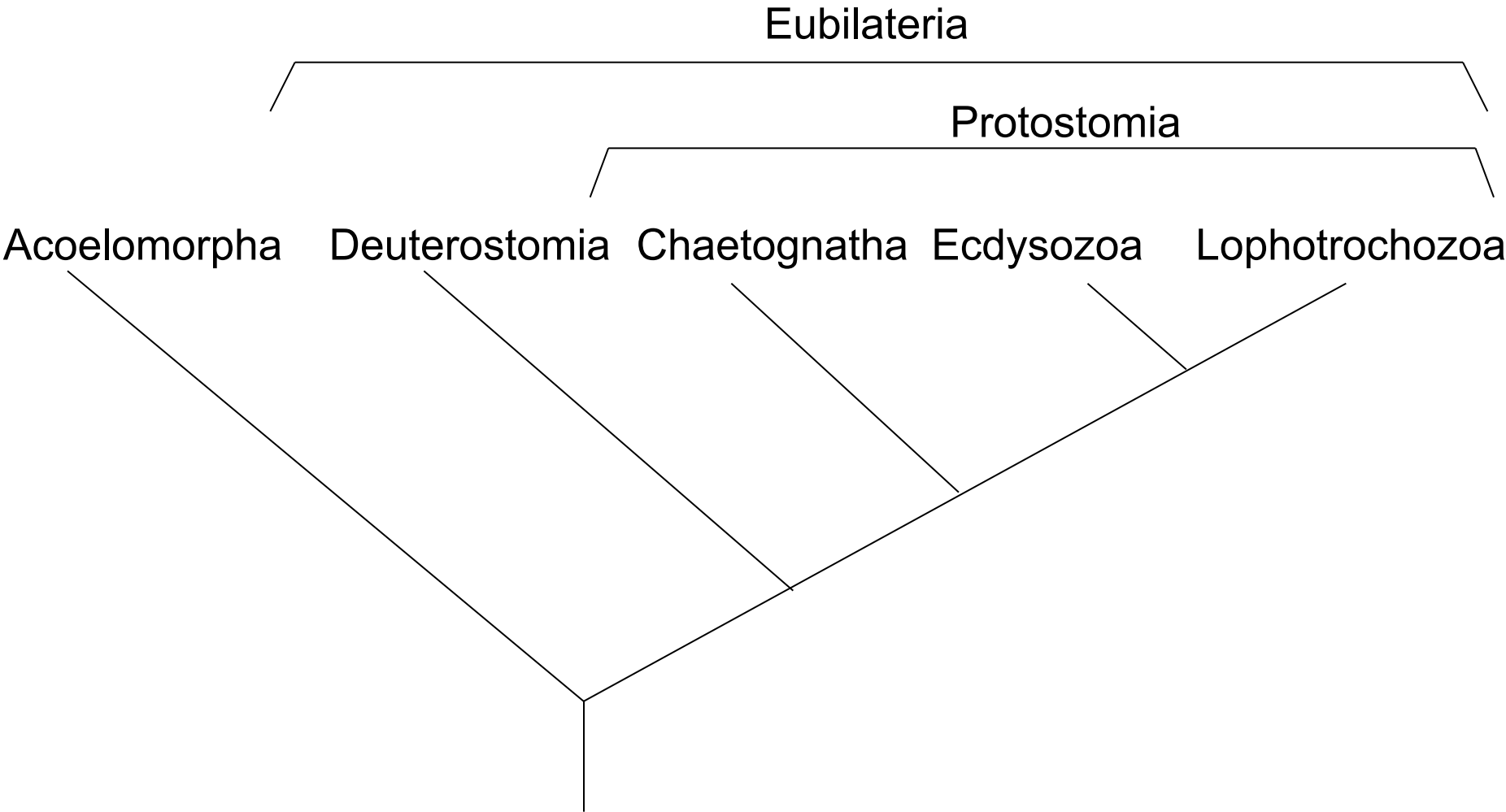
?

Příčně pruhované kořínky bičíků;
osová symetrie larev?

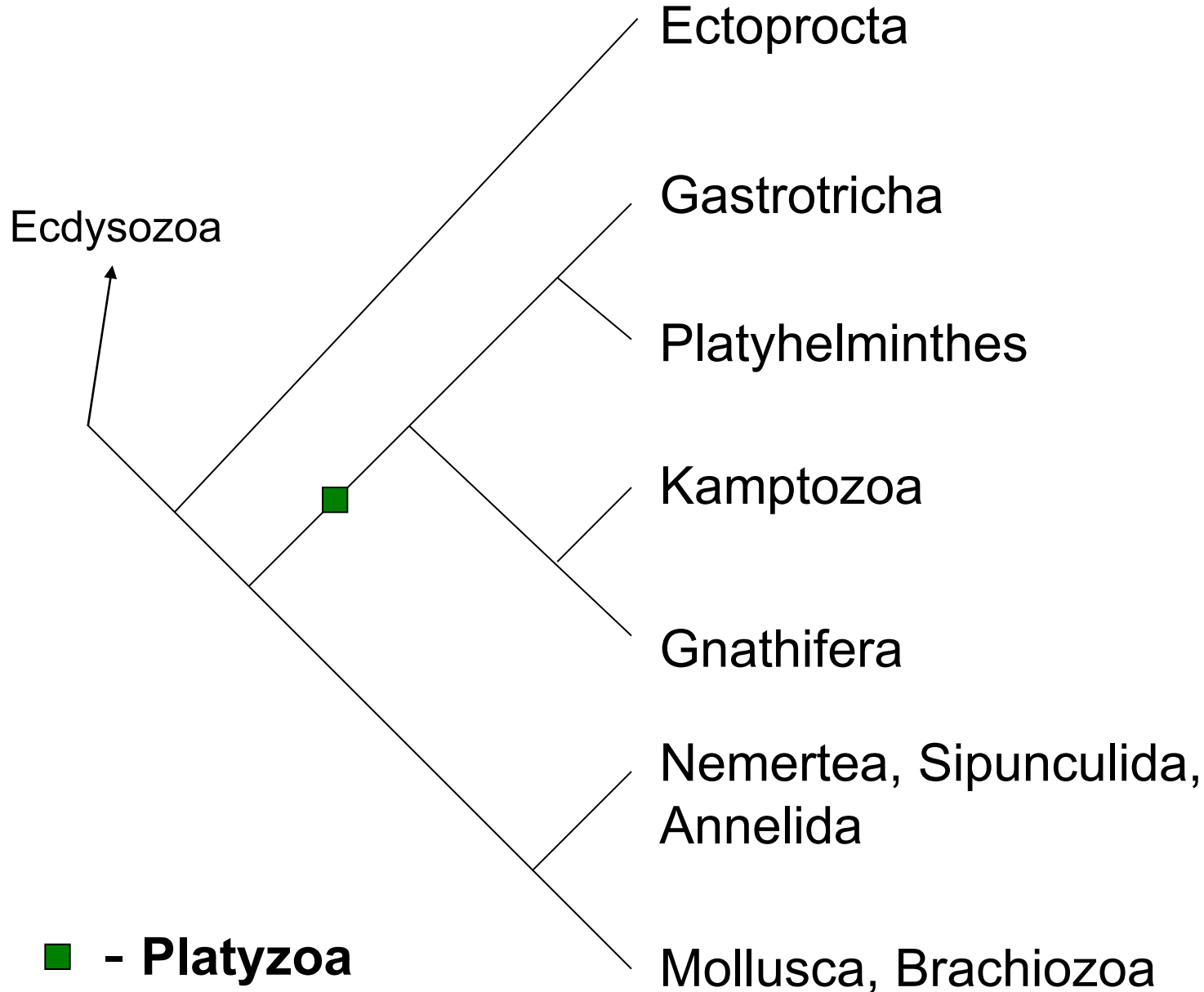
■ Autapomorfie

?

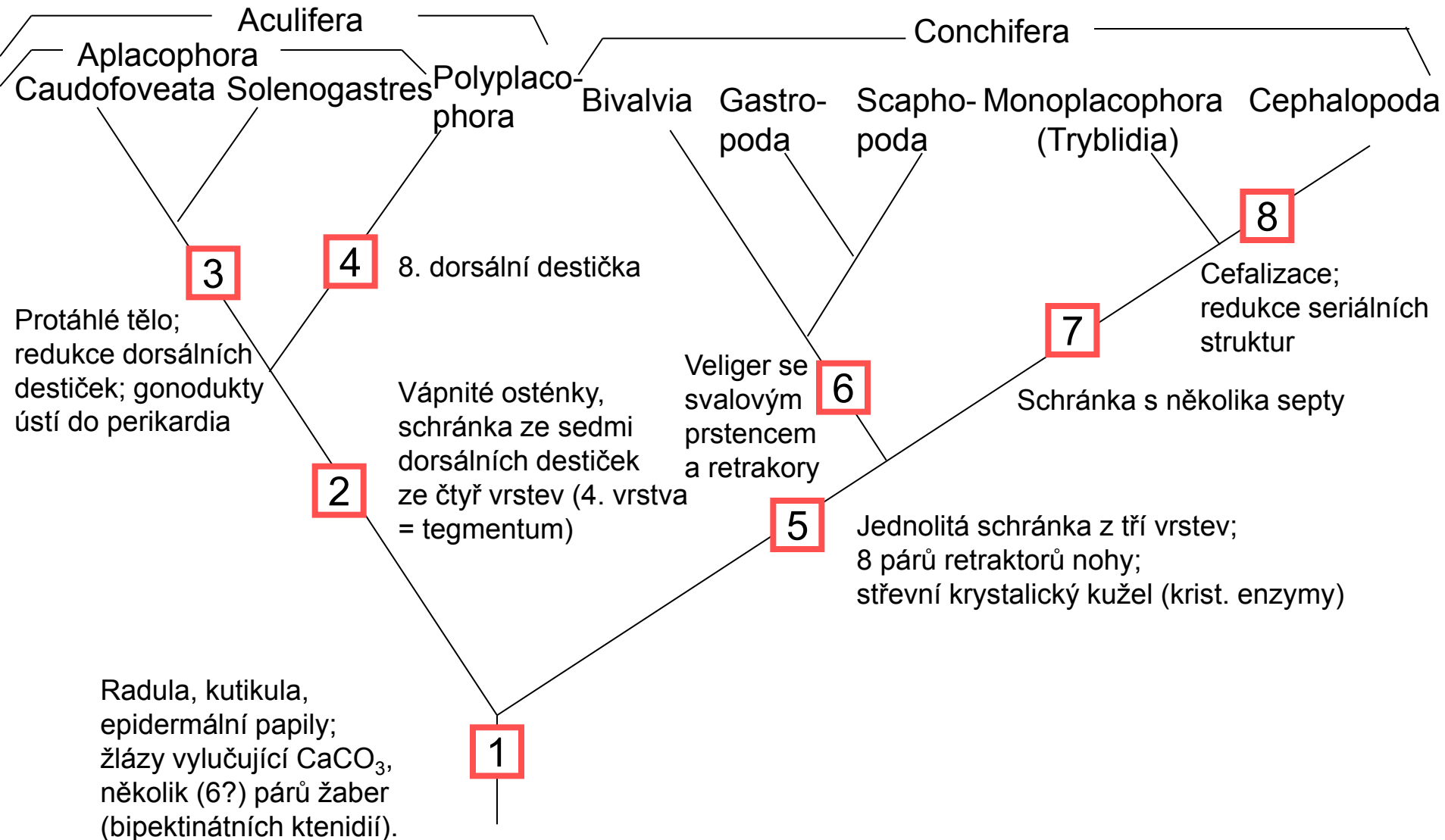
Bilateria (= Triploblastica)



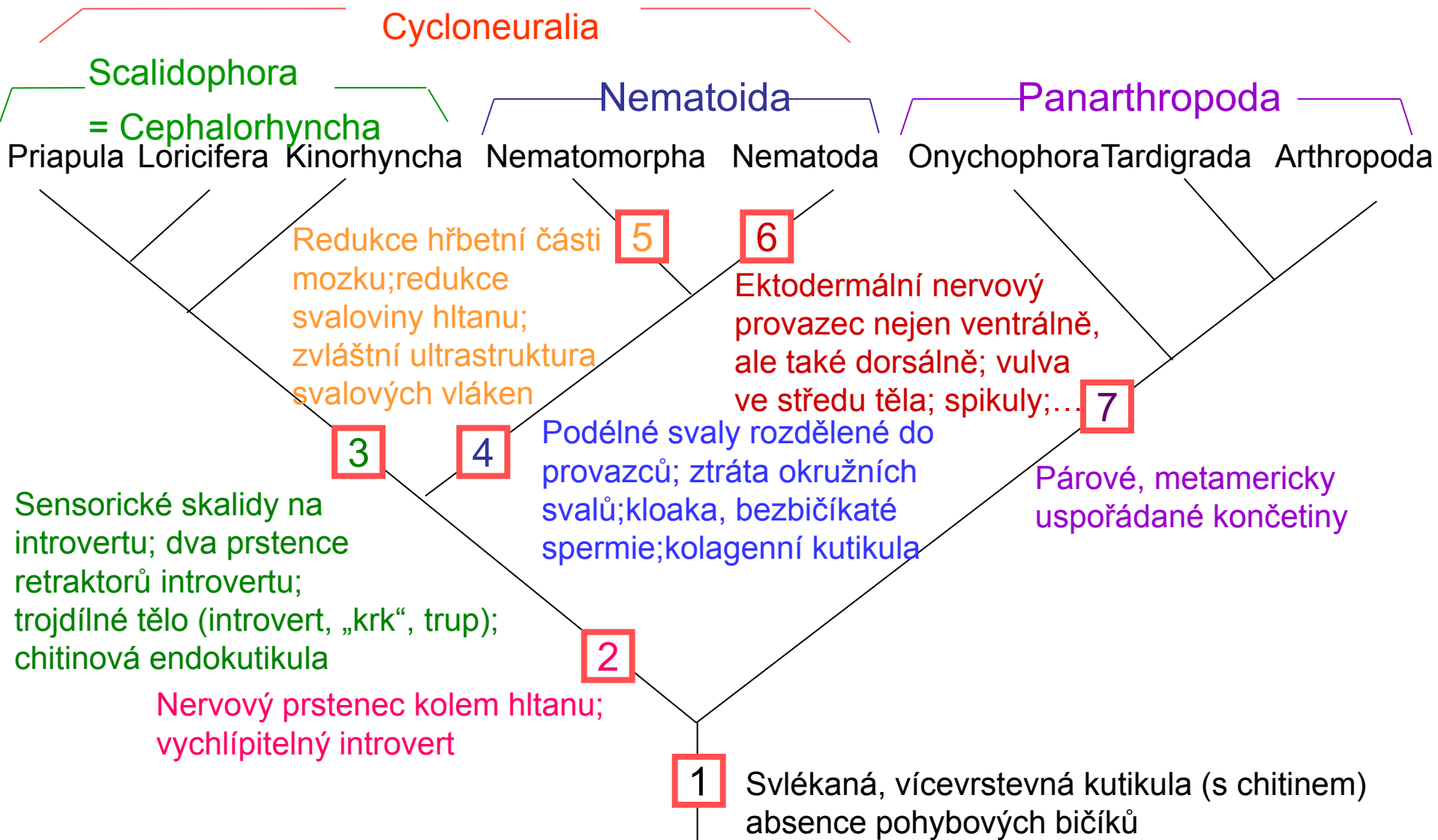
Lophotrochozoa



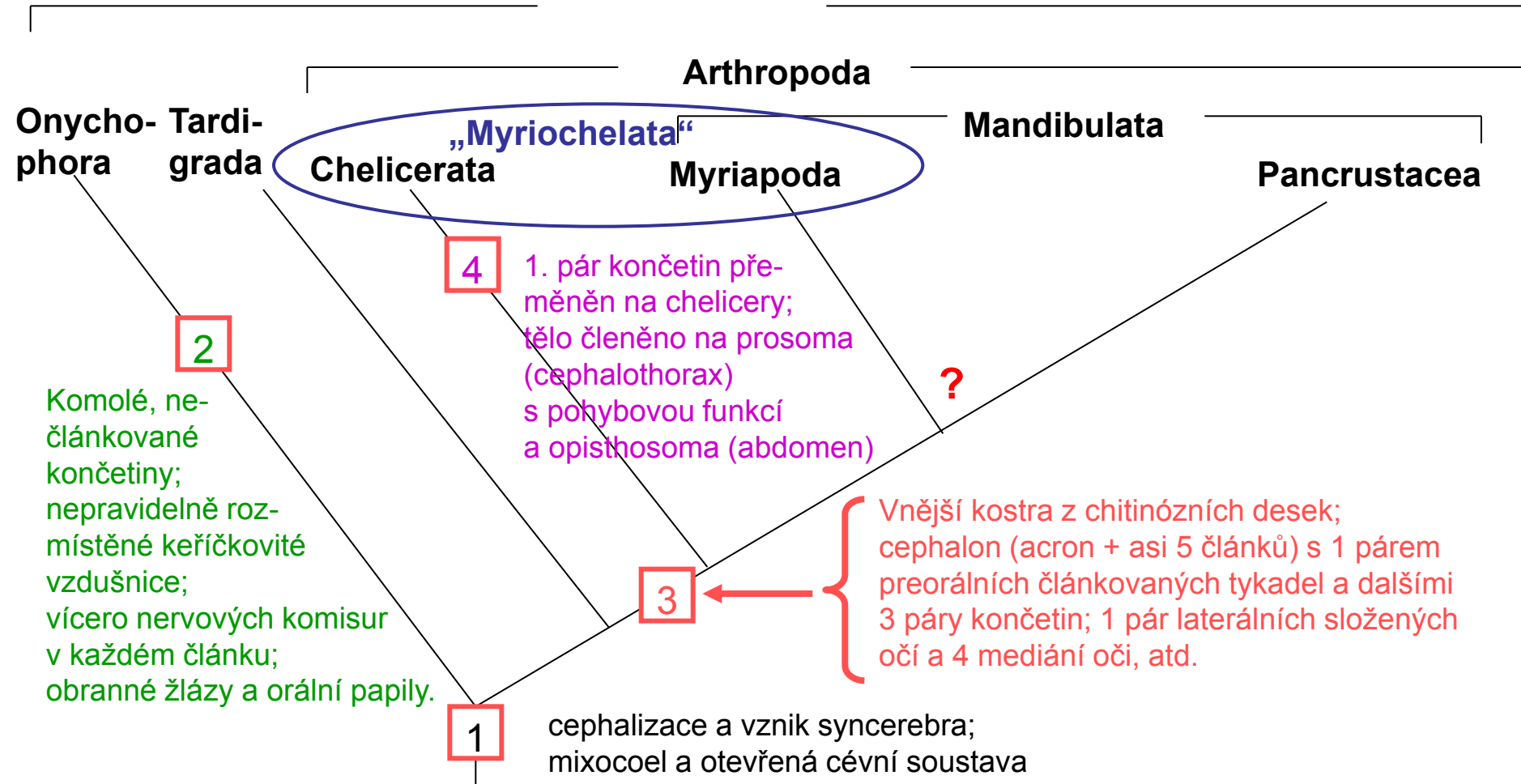
Mollusca - měkkýši



Ecdysozoa



Arthropoda - členovci



Hexapoda – šestinozí, šestinožci

