

PRODUCT INFORMATION

Thermo Scientific GeneRuler DNA Ladder Mix

#SM0331 **250 (5 x 50) µg**
(for 500 applications)

Lot: —

Concentration: 0.5 µg/µL
Supplied with: 2 x 1 mL 6X DNA Loading Dye

Store at -20°C

In total 7 vials.

Description

Thermo Scientific GeneRuler DNA Ladder Mix is designed for sizing and approximate quantification of wide range double-stranded DNA on agarose gel. The ladder is composed of 21 chromatography-purified DNA fragments (in base pairs): 10000, 8000, 6000, 5000, 4000, 3500, **3000**, 2500, 2000, 1500, 1200, **1000**, 900, 800, 700, 600, **500**, 400, 300, 200, and 100. It contains three reference bands (3000, 1000 and 500 bp) for easy orientation.

The ladder is dissolved in TE buffer.

Storage Buffer

10 mM Tris-HCl (pH 7.6), 1 mM EDTA.

6X DNA Loading Dye

10 mM Tris-HCl (pH 7.6), 0.03% bromophenol blue, 0.03% xylene cyanol FF, 60% glycerol and 60 mM EDTA.

CERTIFICATE OF ANALYSIS

Well-defined bands are formed during agarose gel electrophoresis.

The DNA concentration is determined spectrophotometrically.

The absence of nucleases is confirmed by a direct nuclease activity assay.

Quality authorized by:



Jurgita Zilinskiene

Protocol for Loading

Loading mixture for the 5 mm agarose gel lane*:

DNA Ladder	1 μ L
6X Loading Dye Solution	1 μ L
Deionized water	4 μ L
	<hr/>
	6 μ L

Step 1: Mix gently

Step 2: Load on the gel

* For gels with other lane widths, the components of the mixture should be scaled either up or down. Use 0.2 μ L (0.1 μ g) of DNA Ladder per 1mm of lane.

Recommendations

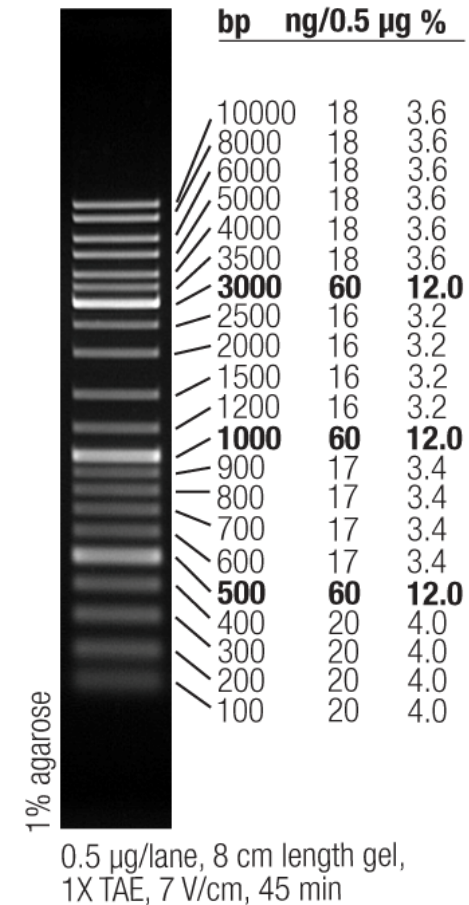
- Do not heat before loading.
- Dilute your DNA sample with the 6X Loading Dye Solution (#R0611, supplied with the ladder): mix 1 volume of the dye solution with 5 volumes of the DNA sample;
- Load the same volumes of the DNA sample and the DNA ladder;
- For quantification, adjust the concentration of the sample to equalize it approximately with the amount of DNA in the nearest band of the ladder.
- For DNA band visualization with SYBR[®] Green, GelRed and other intercalating dyes, do not add the dyes into the sample, use gel staining after electrophoresis or include dyes into agarose gel to avoid aberrant DNA migration.

PRODUCT USE LIMITATION

This product is developed, designed and sold exclusively for research purposes and in vitro use only. The product was not tested for use in diagnostics or for drug development, nor is it suitable for administration to humans or animals. Please refer to www.thermoscientific.com/onebio for Material Safety Data Sheet of the product.

© 2012 Thermo Fisher Scientific Inc. All rights reserved. SYBR is a registered trademark of Molecular Probes, Inc. All other trademarks are the property of Thermo Fisher Scientific Inc. and its subsidiaries.

GeneRuler DNA Ladder Mix



NOTICE TO PURCHASER: LIMITED LICENSE

This product or its use is covered by at least one claim of U.S. Patent Nos. 5,834,201, 6,680,378, and/or 7,132,520 owned by Invitrogen Corporation. The purchase of this product conveys to the buyer the non-transferable right to use the purchased amount of the product in internal research conducted by the buyer. The buyer cannot use this product or materials made by the employment of this product for Commercial Purposes. Commercial Purposes means any activity for consideration and may include, but is not limited to: (1) use of the product in manufacturing; (2) use of the product to provide a service, information, or data; (3) use of the product for therapeutic, diagnostic or prophylactic purposes; or (4) resale of the product, whether or not the product is resold for use in research. Further information on purchasing licenses under the above patents may be obtained by contacting the Business Development Department, Invitrogen Corporation, 5791 Van Allen Way, Carlsbad, CA 92008. Email: outlicensing@invitrogen.com.