



Bi 6760
**Základy entomologie
cvičení**

2014

RNDr. Andrea Tóthová, Ph.D.

tothova@sci.muni.cz

Mgr. Igor Malenovský, Ph.D.

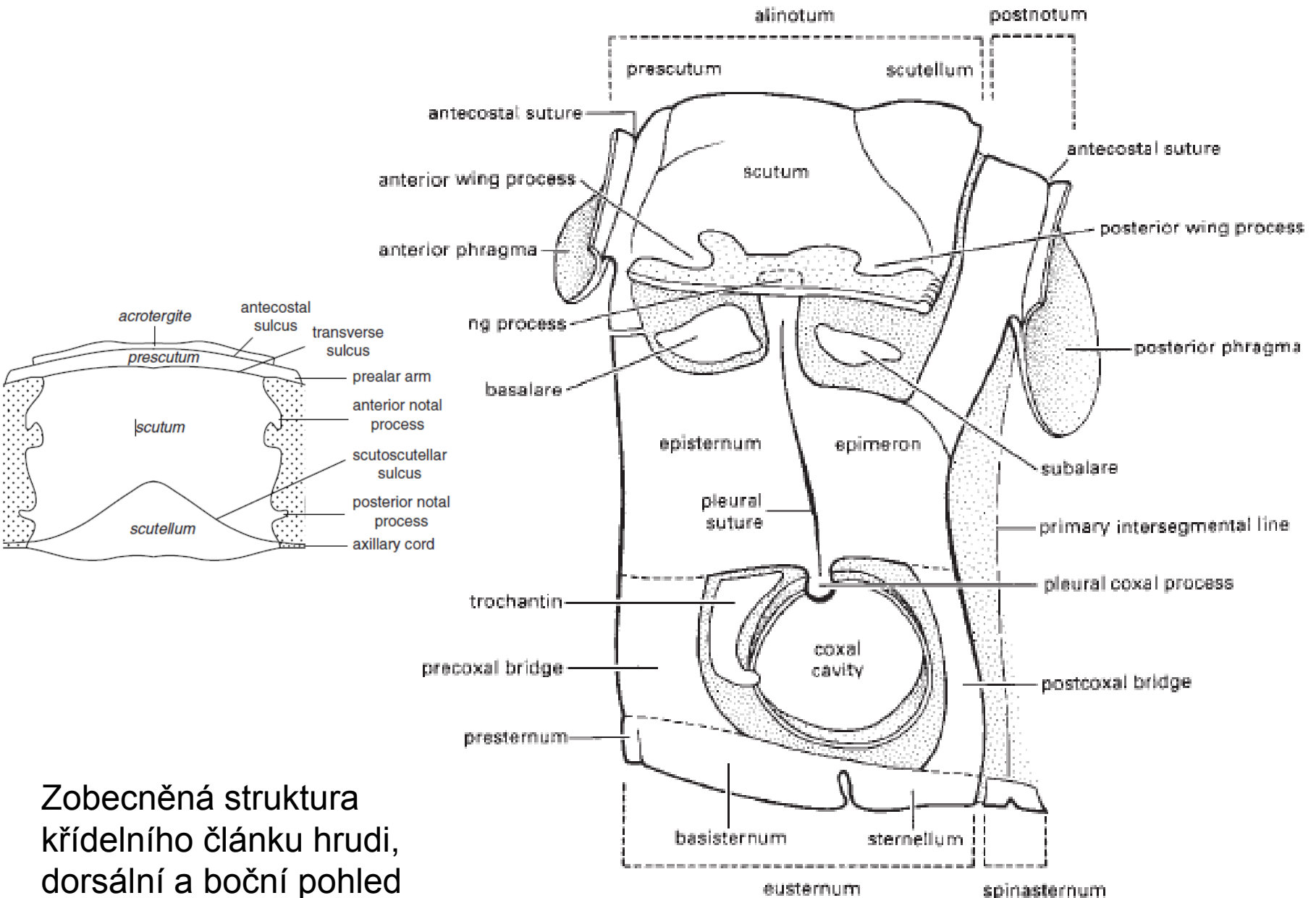


INVESTICE DO ROZVOJE VZDĚLÁVÁNÍ

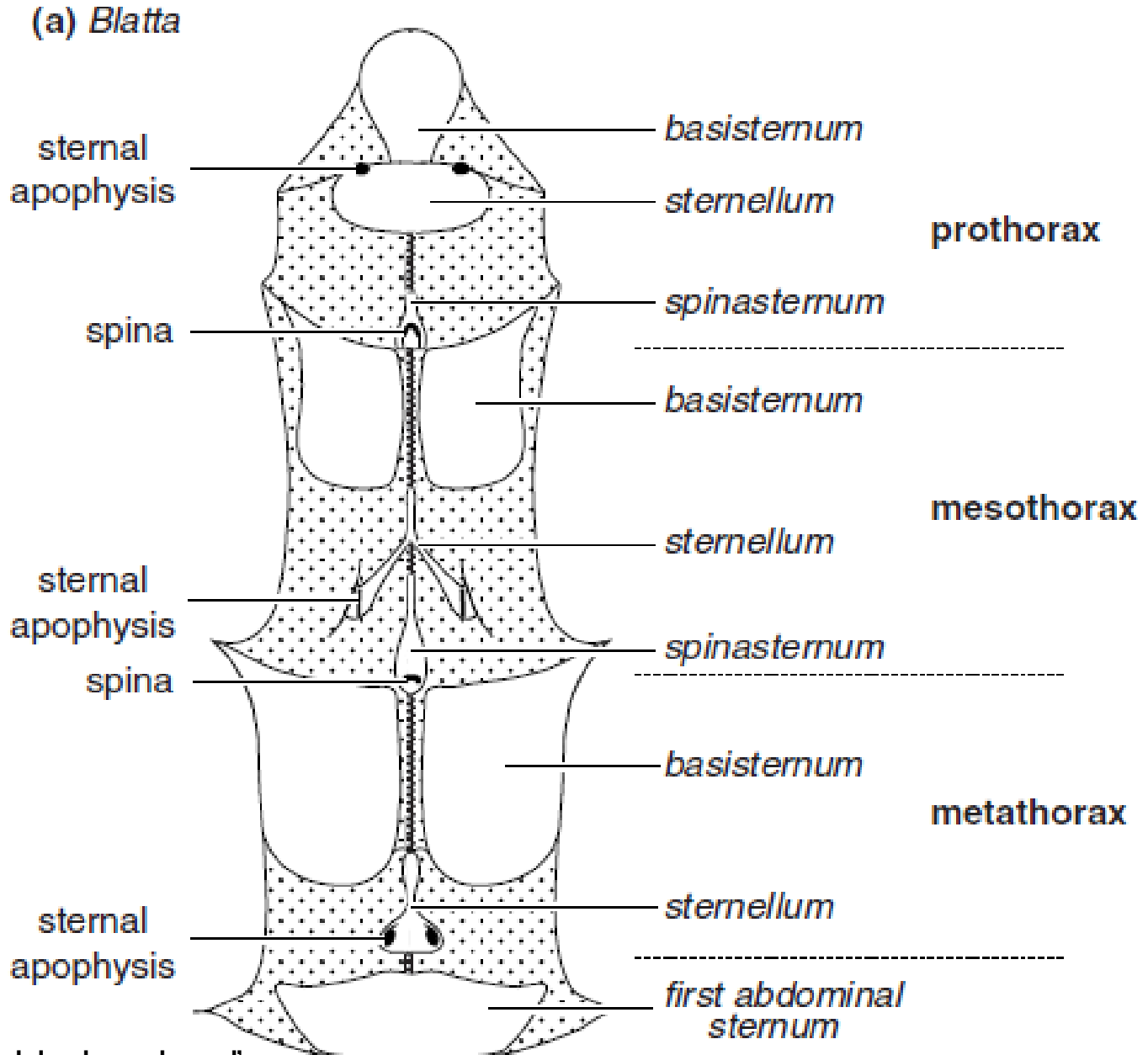
PROTHORAX

MESOTHORAX

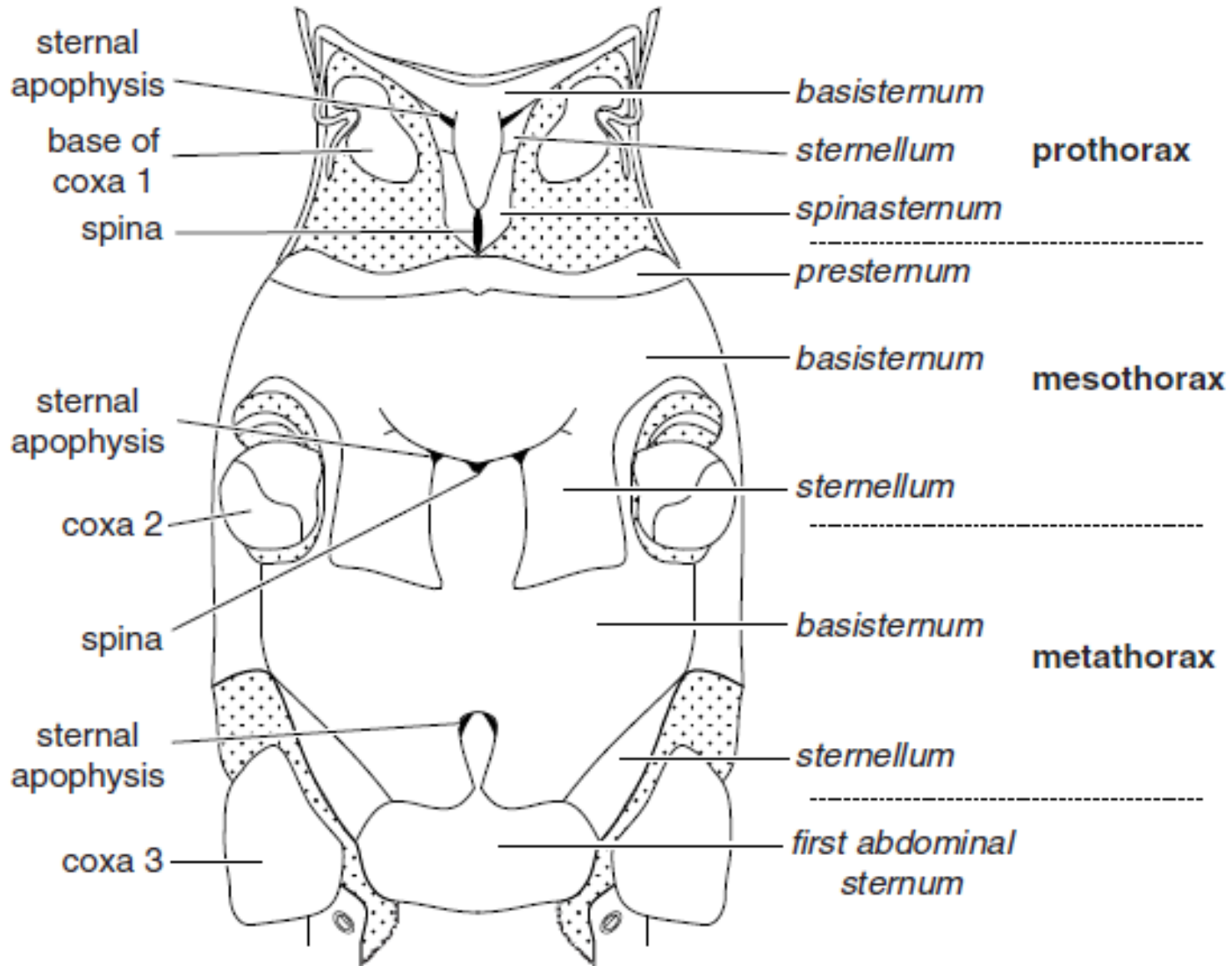
METATHORAX



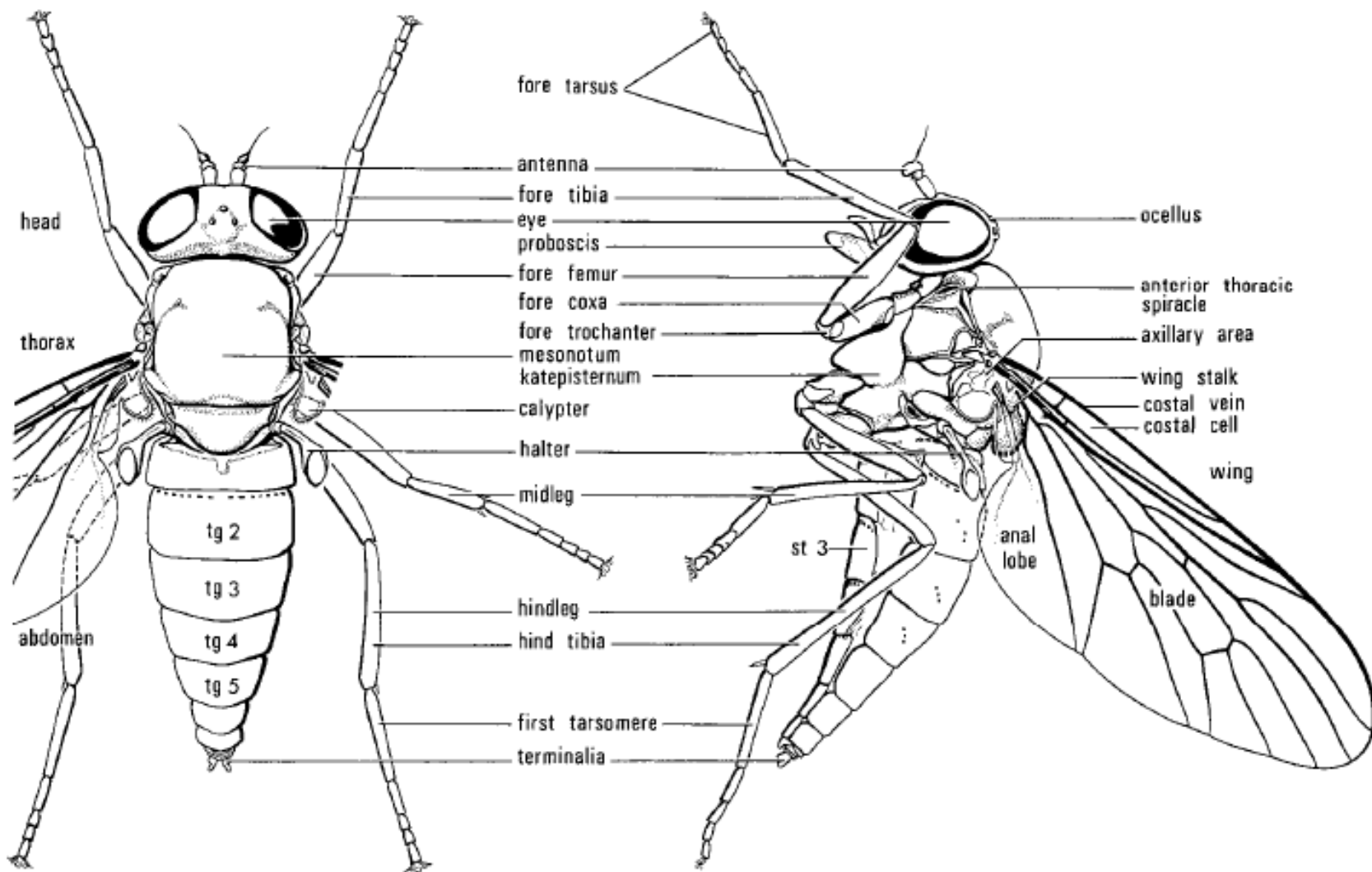
Zobecněná struktura
křídelního článku hrudi,
dorsální a boční pohled



Ventrální pohled na hrud':
případ s jasně oddělenými sklerity (šváb)

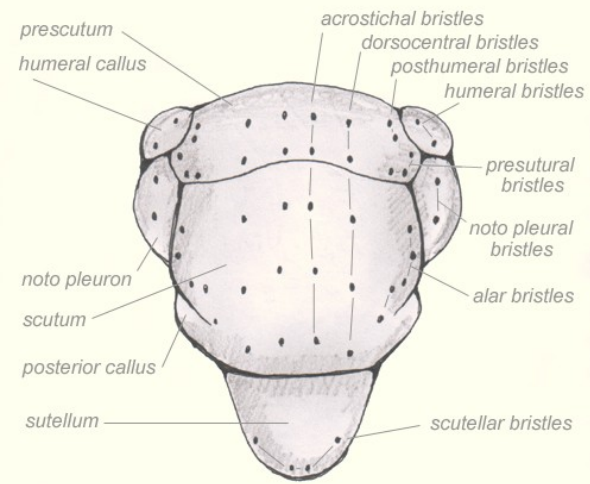


Ventrální pohled na hrud':
případ se splynulou středo- a zadohrudí do pterothorakální destičky (saranče)

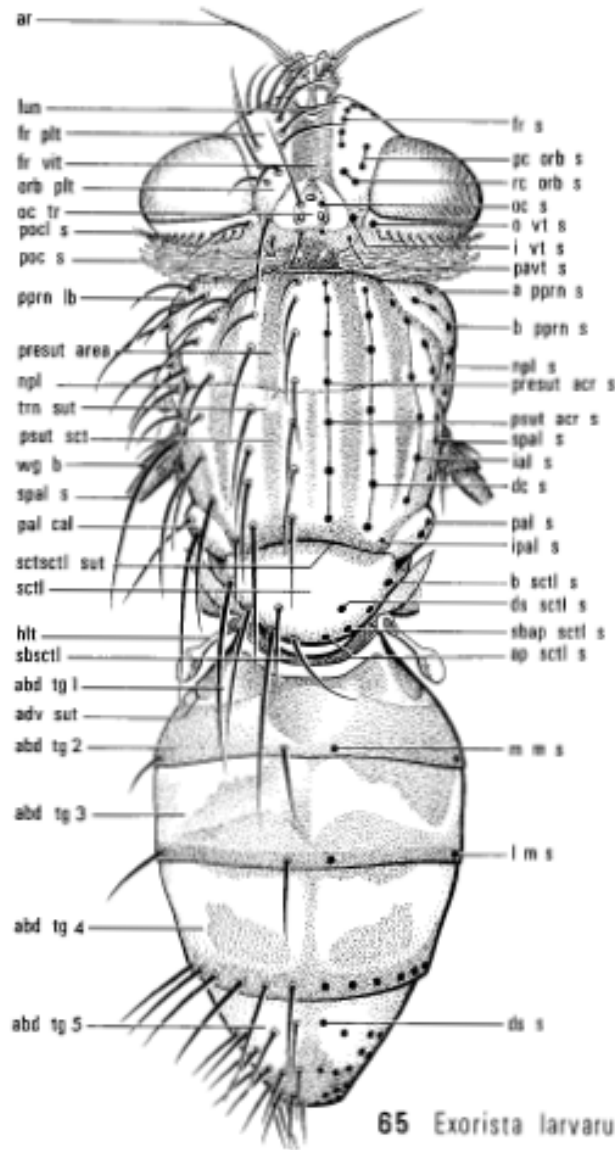


2 *Symphoromyia montana* ♀

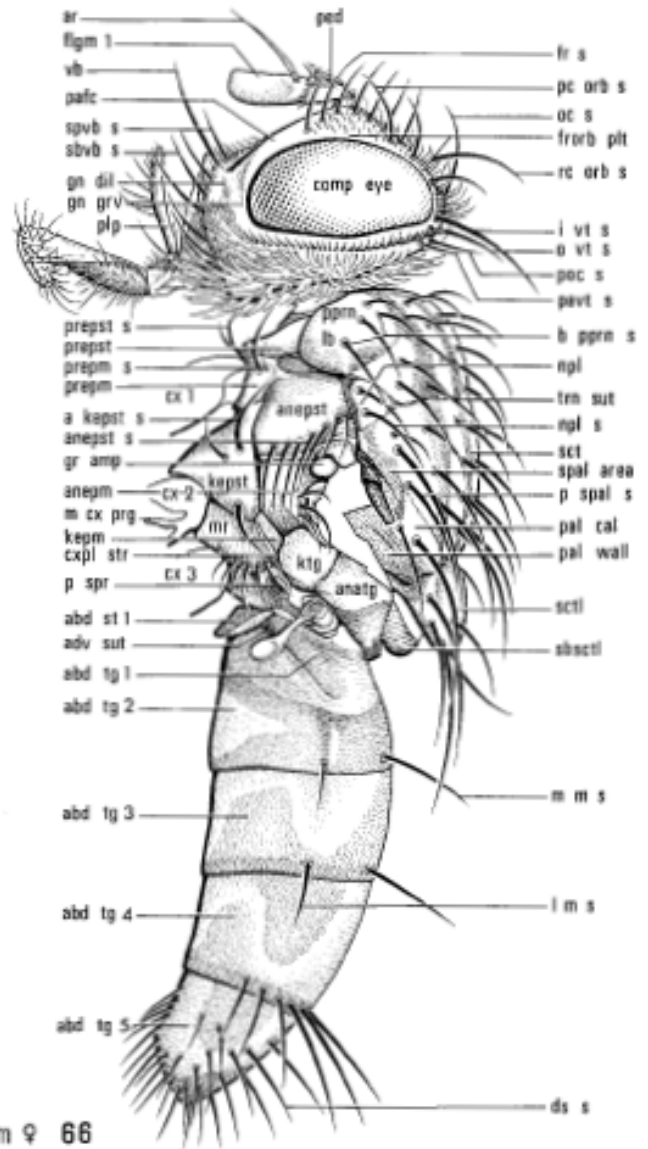
3 *Symphoromyia montana* ♀



Body (dorsal) muscoidfly (Diptera)



65 *Exorista larvarum* ♀ 66



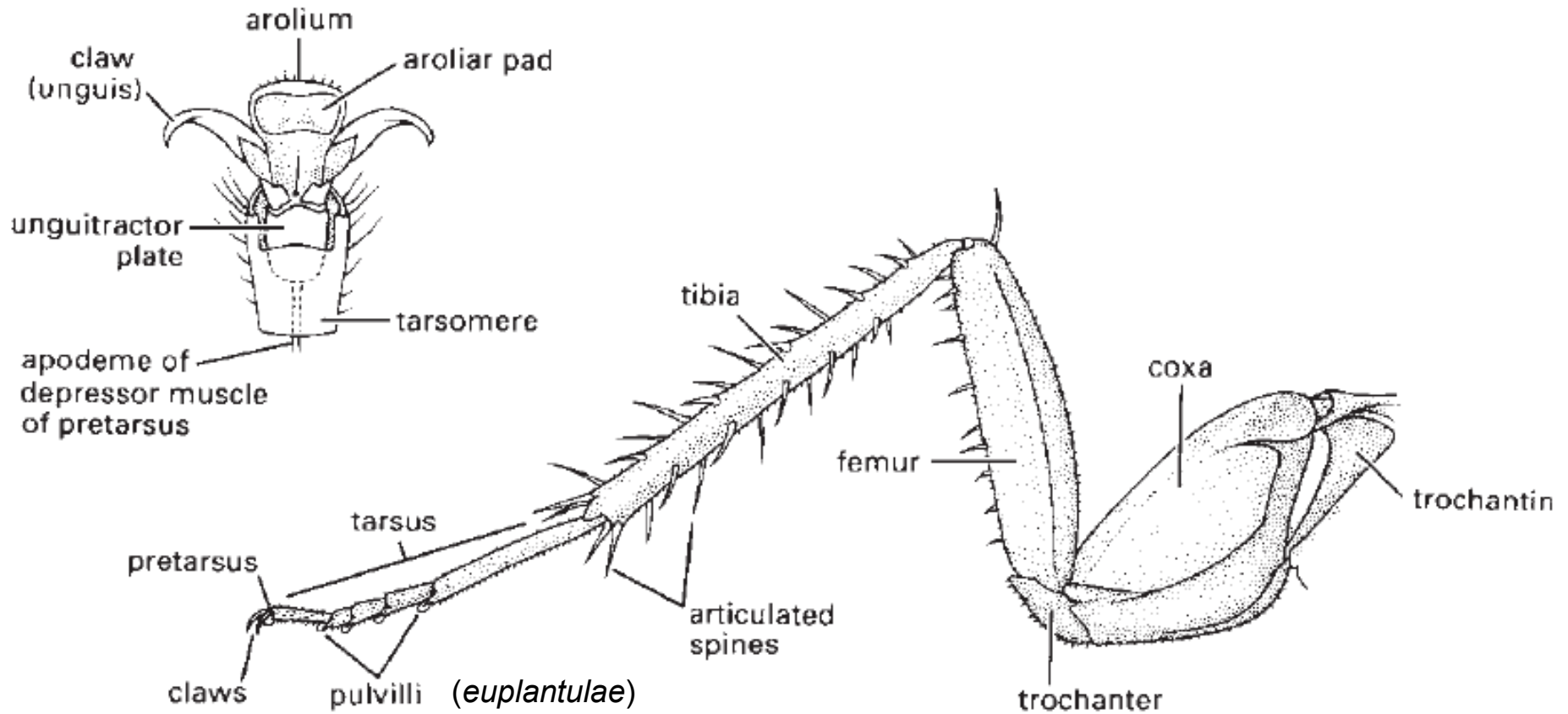
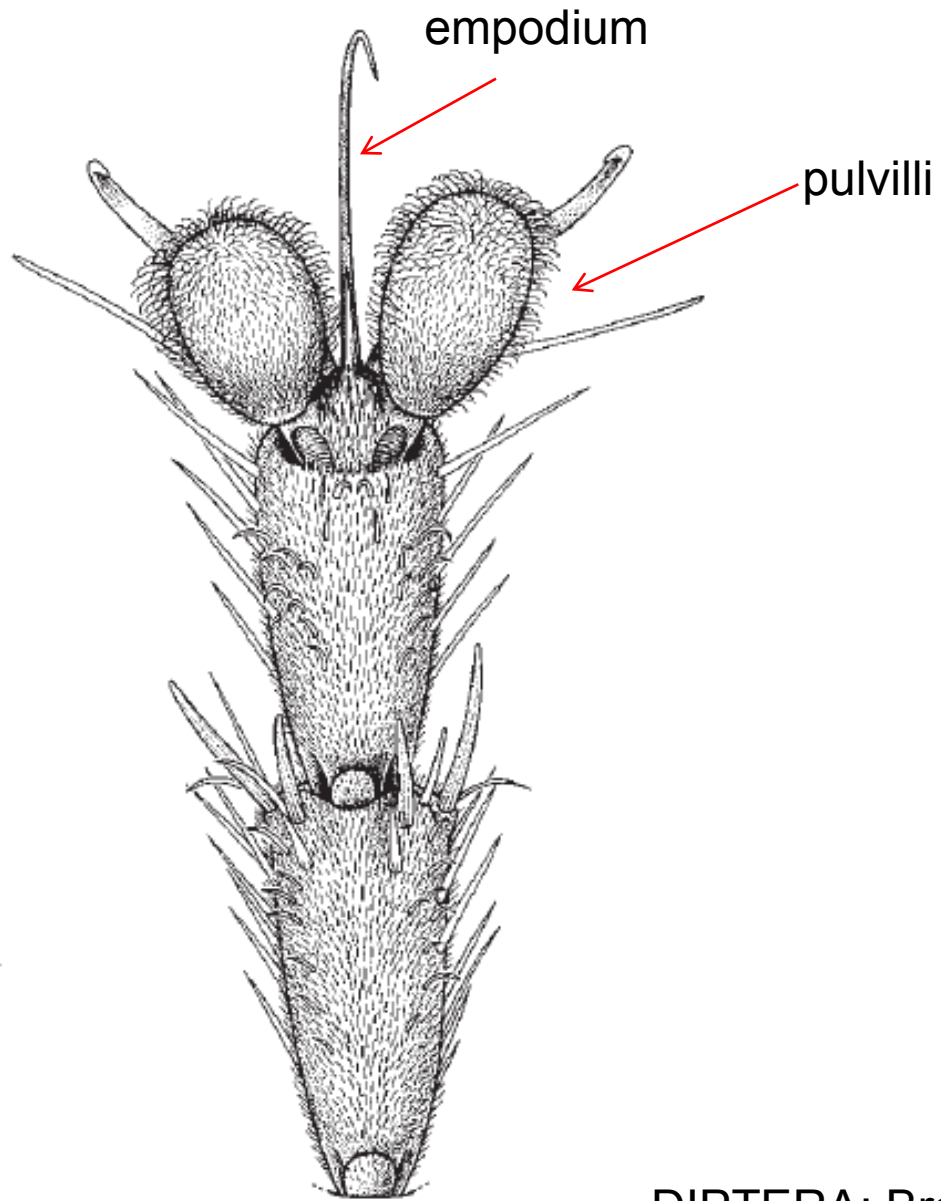
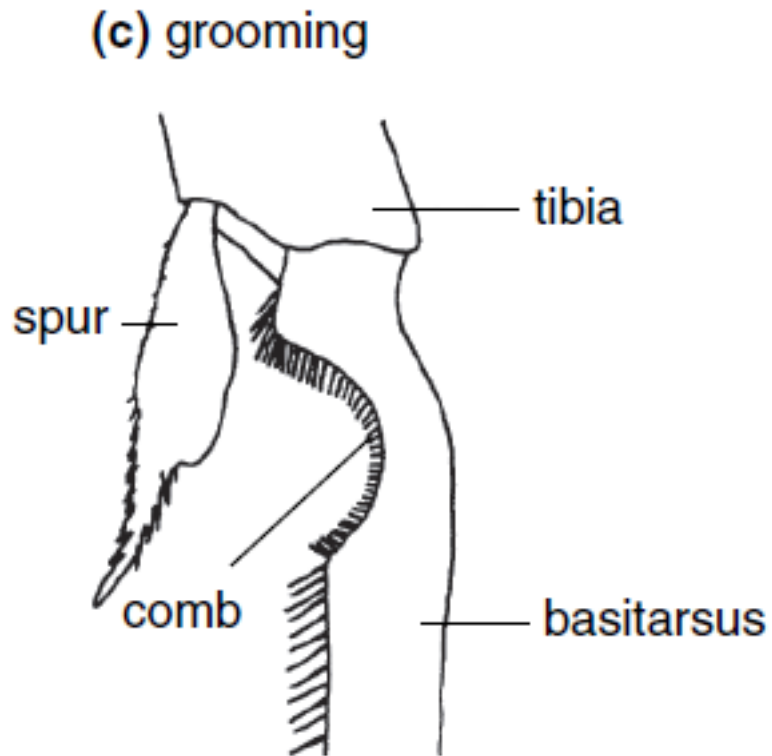


Fig. 2.21 The hind leg of a cockroach, *Periplaneta americana* (Blattodea: Blattidae), with enlargement of ventral surface of pretarsus and last tarsomere. (After Cornwell 1968; enlargement after Snodgrass 1935.)



DIPTERA: Brachycera

Čistící nohy

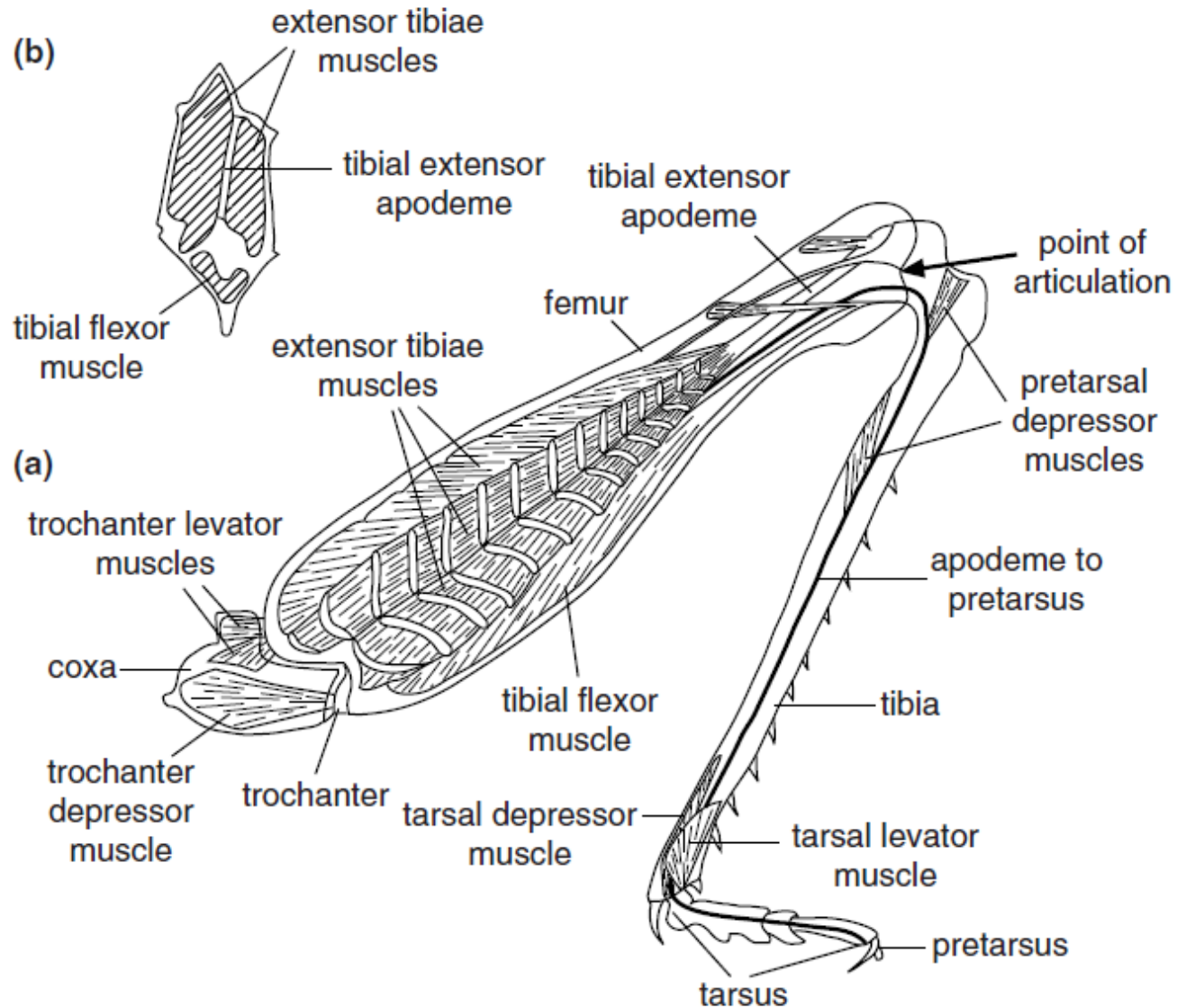


Hymenoptera: Mutilidae

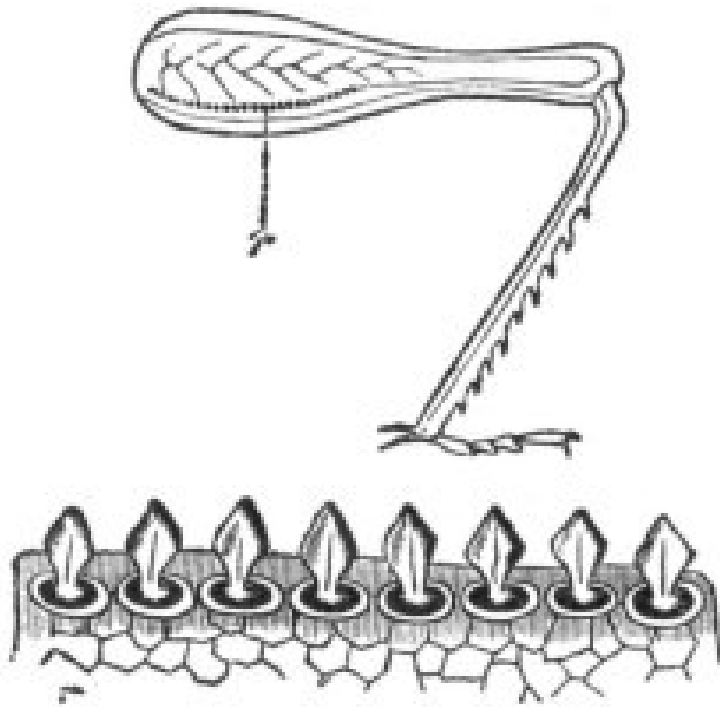


Coleoptera: Carabidae

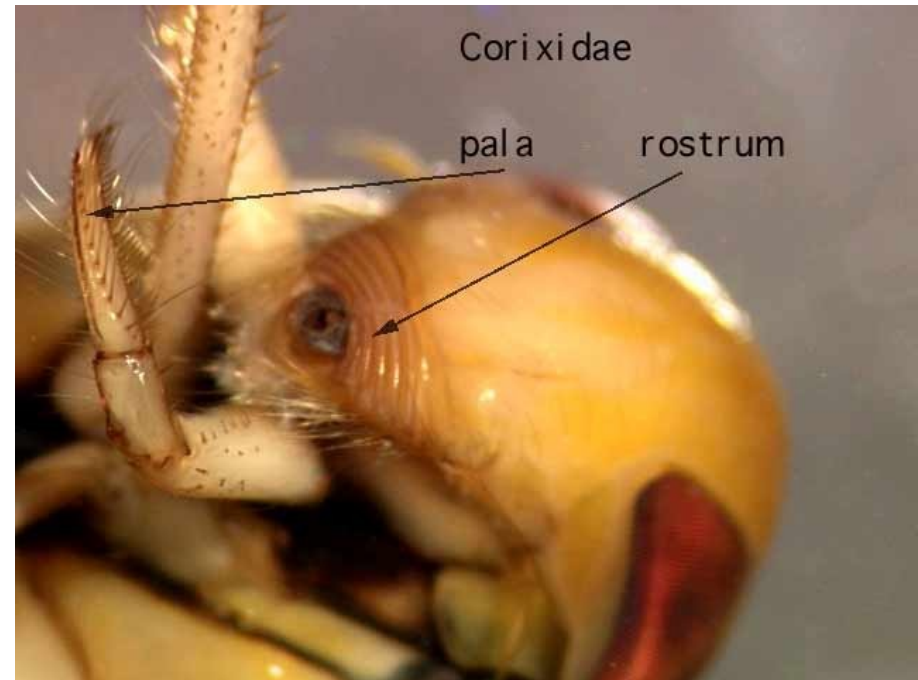
Skákavé končetiny (saranče)



Stridulační nohy

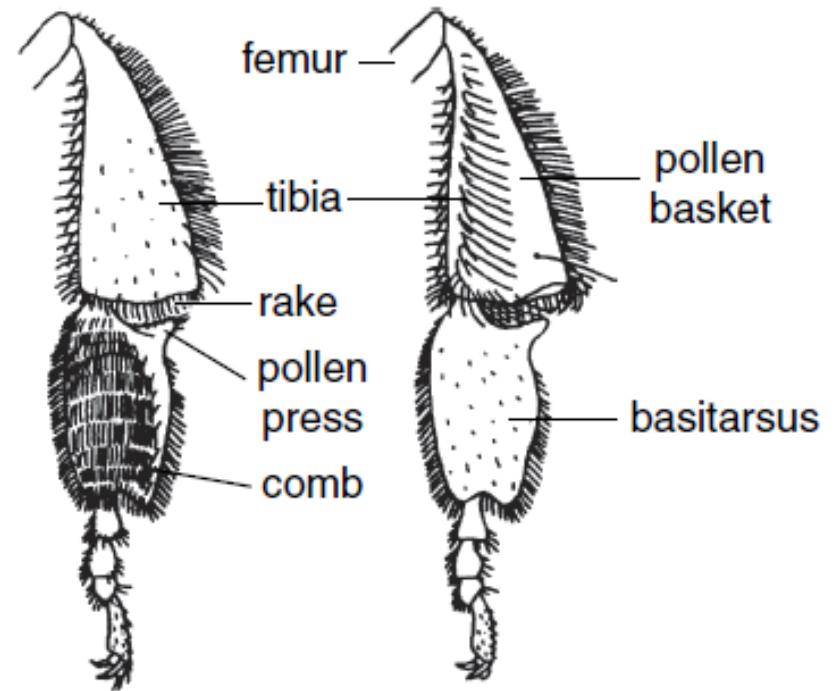


Orthoptera: Acrididae



Heteroptera: Corixidae

Sběrací končetiny



Voňavé končetiny



Hepialus humuli – vychlípené rozetovité orgány (kartáčky) na zadních holeních (Mallet 1984)