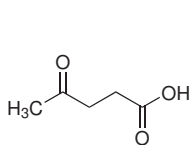
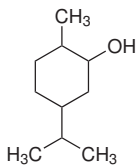


## Domácí úkol č. 1

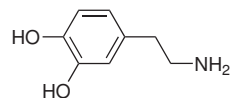
1. Systematicky pojmenujte následující sloučeniny:



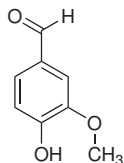
kys. levulová



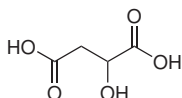
menthol



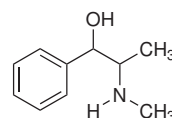
dopamin



vanilin

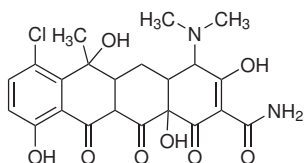


kys. jablečná

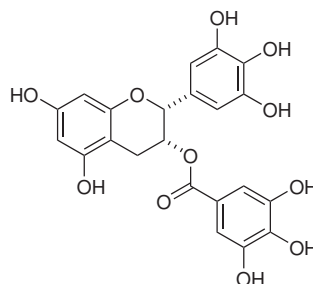


efedrin

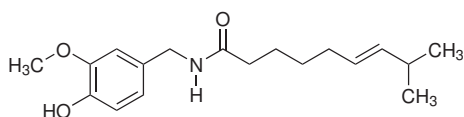
2. V následujících sloučeninách identifikujte přítomné funkční skupiny (označte je kroužkem a nazvěte) a určete skupinu s nejvyšší názvoslovnou prioritou.



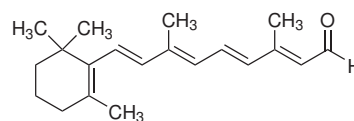
tetracyklin  
(antibiotikum)



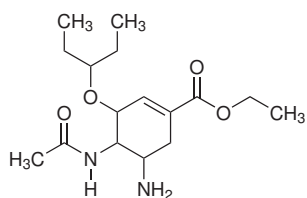
polyfenol v zeleném čaji



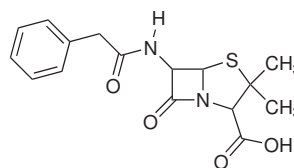
kapsaicin  
(to pálivé v paprice)



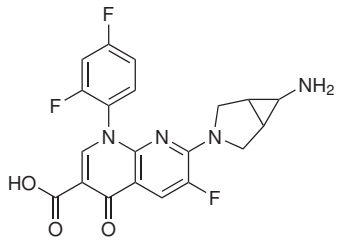
retinal  
(Vitamin A aldehyd)



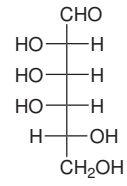
oseltamivir  
(Tamiflu(R))



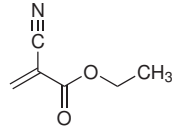
penicilin G



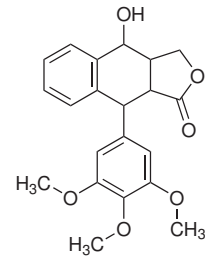
**trovafloxacin**  
(antibiotikum)



**D-talosa**



**"sekundové lipidlo"**



**podofyllotoxin**  
(cytostatikum)