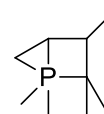
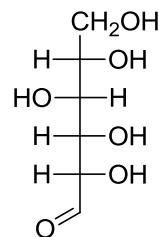
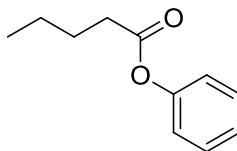
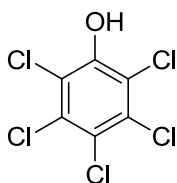
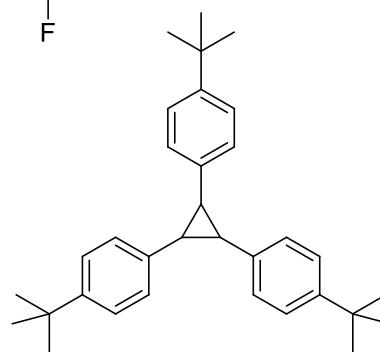
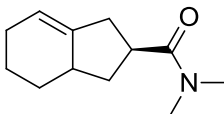
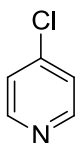
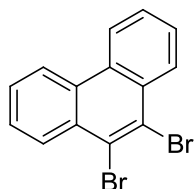
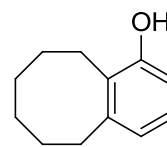
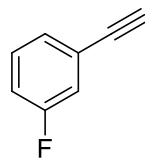
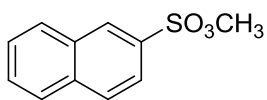
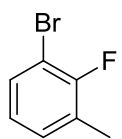


1) Pojmenujte následující sloučeniny-



2) Nakreslete struktury těchto látek

- kyselina *m*-chlor-peroxybenzoová
- $\beta$ -naftyl-ethyleter
- dimethylamid kyseliny 2,4-dichlorobenzoové
- prop-2-yl ester kyseliny 5-methoxyantracen-9-sulfonové
- 1,1-dichlor-cyklopropyl-2-amin
- 2-methyl-3-methoxyfenol
- 5-methoxymethylpyridin-2-karbaldehyd
- perfluoroethanol
- 2-chlorbenzensulfonát draselný
- 2,4,6-trinitrofenol
- 4-[(4-dimethylamino)fenylazo]benzenesulfonát sodný
- 1-bromo-3-chlorospiro[4.5]dekan-7-ol
- oktafluorobicyclo[2.2.0]hex-1(4)-ene
- acetyl propionát
- 1-(*m*-nitrofenyl)-prop-2-yn
- 2,4-dimethylfenylisothiokyanát
- 4,4'-dihydroxybenzofenon
- (2*R*)-2-amino-3-[(*S*)-prop-2-enylsulfenyl]propanová kyselina