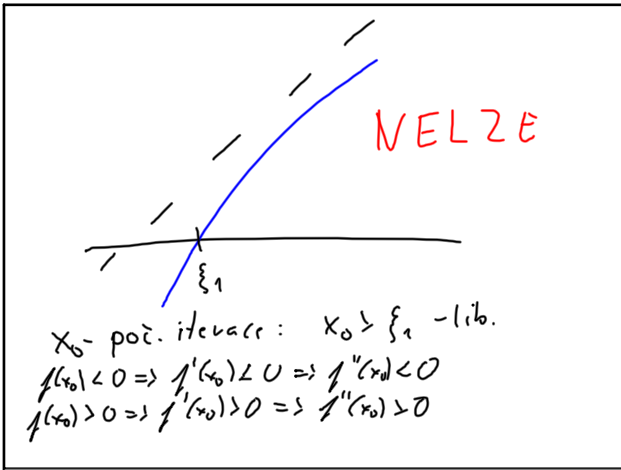


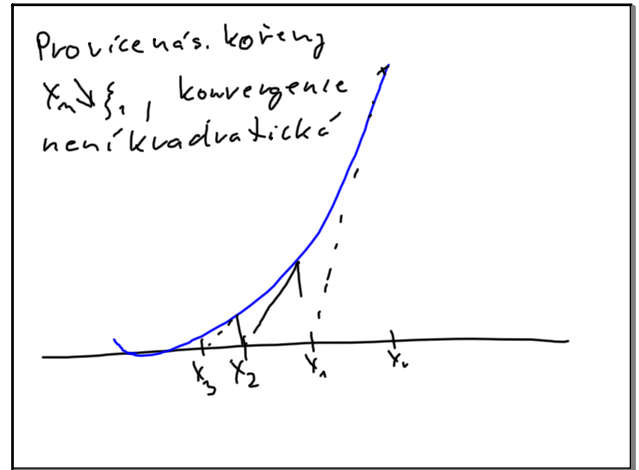
3 26-16:06

Podle Rolleovy věty
Mezi ξ_i, ξ_{i+1} leží d_i - kořen derivace P'
 d_1, \dots, d_{m-1}
 $d_1 \geq d_2 \geq \dots \geq d_{m-1}$
Mezi nimi leží kořeny P''
 $\beta_1 \geq \beta_2 \geq \dots \geq \beta_{m-2}$
 $\xi_1 \geq d_1 \geq \beta_1 \dots$
Pro $x > \xi_1$ je P monotóní, pořád konvex/konkáv

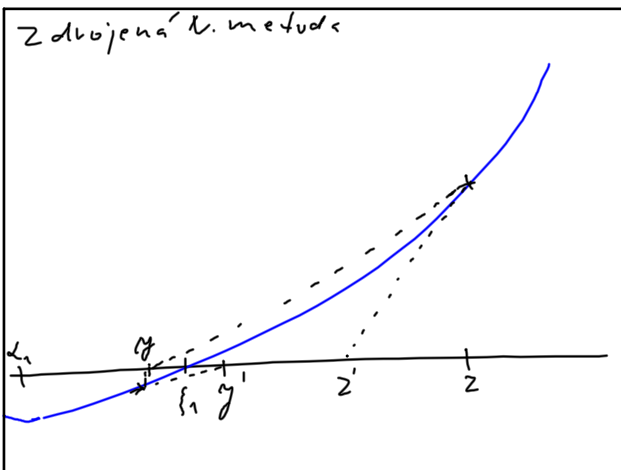
3 26-16:25



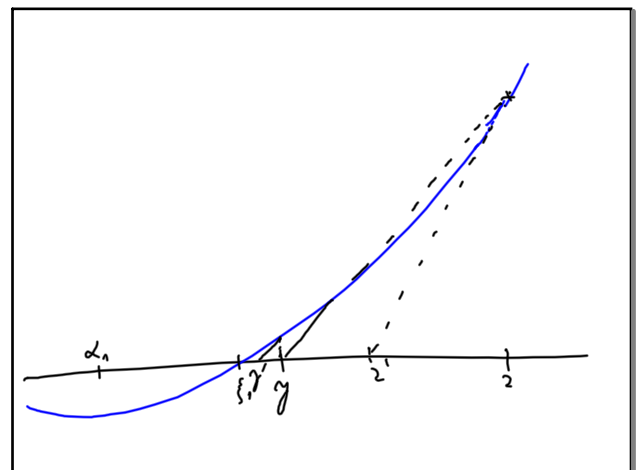
3 26-16:31



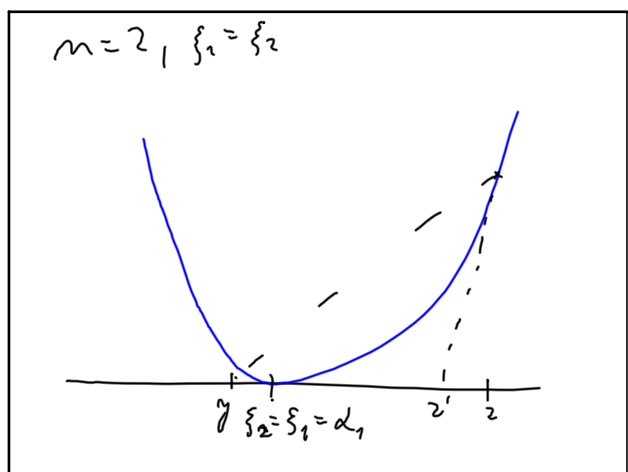
3 26-16:37



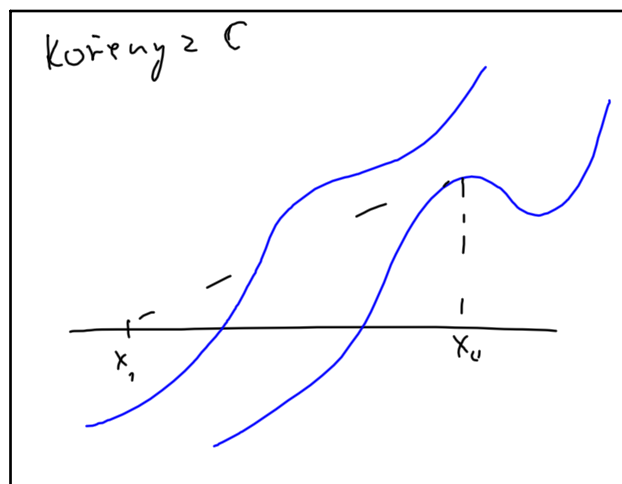
3 26-16:50



3 26-16:54



3 26-16:56



3 26-17:06