



Bi 6760
Základy entomologie

Thorax, pes

2015

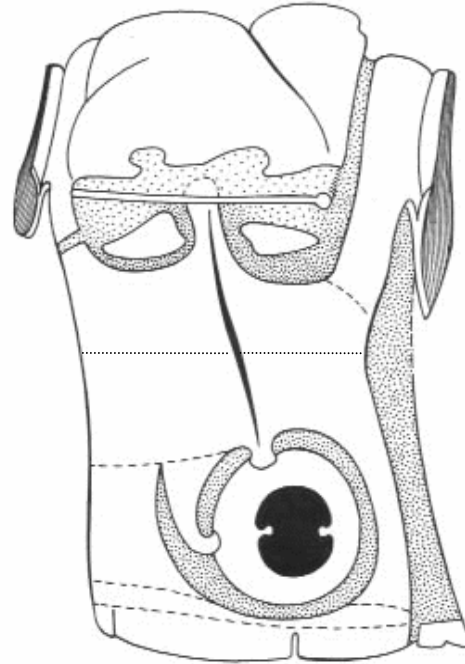
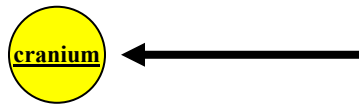
RNDr. Andrea Tóthová, Ph.D.
tothova@sci.muni.cz



INVESTICE DO ROZVOJE VZDĚLÁVÁNÍ

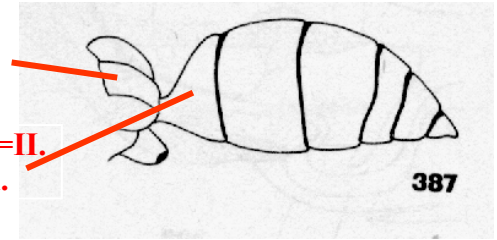
Thorax

Mesothorax - Pterygota



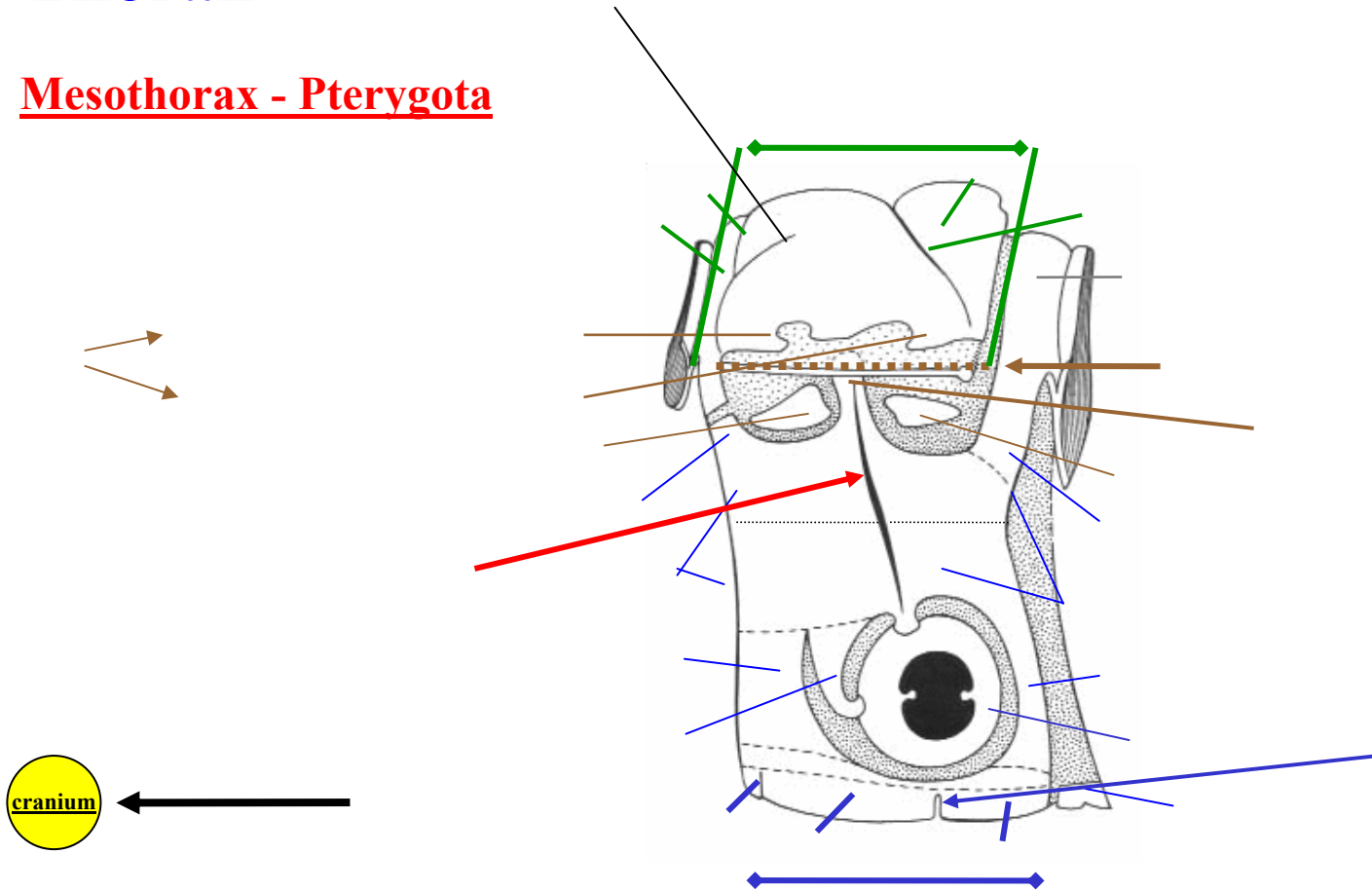
propodeum
=I. abd. čl.

petiolus =II.
abd.čl.



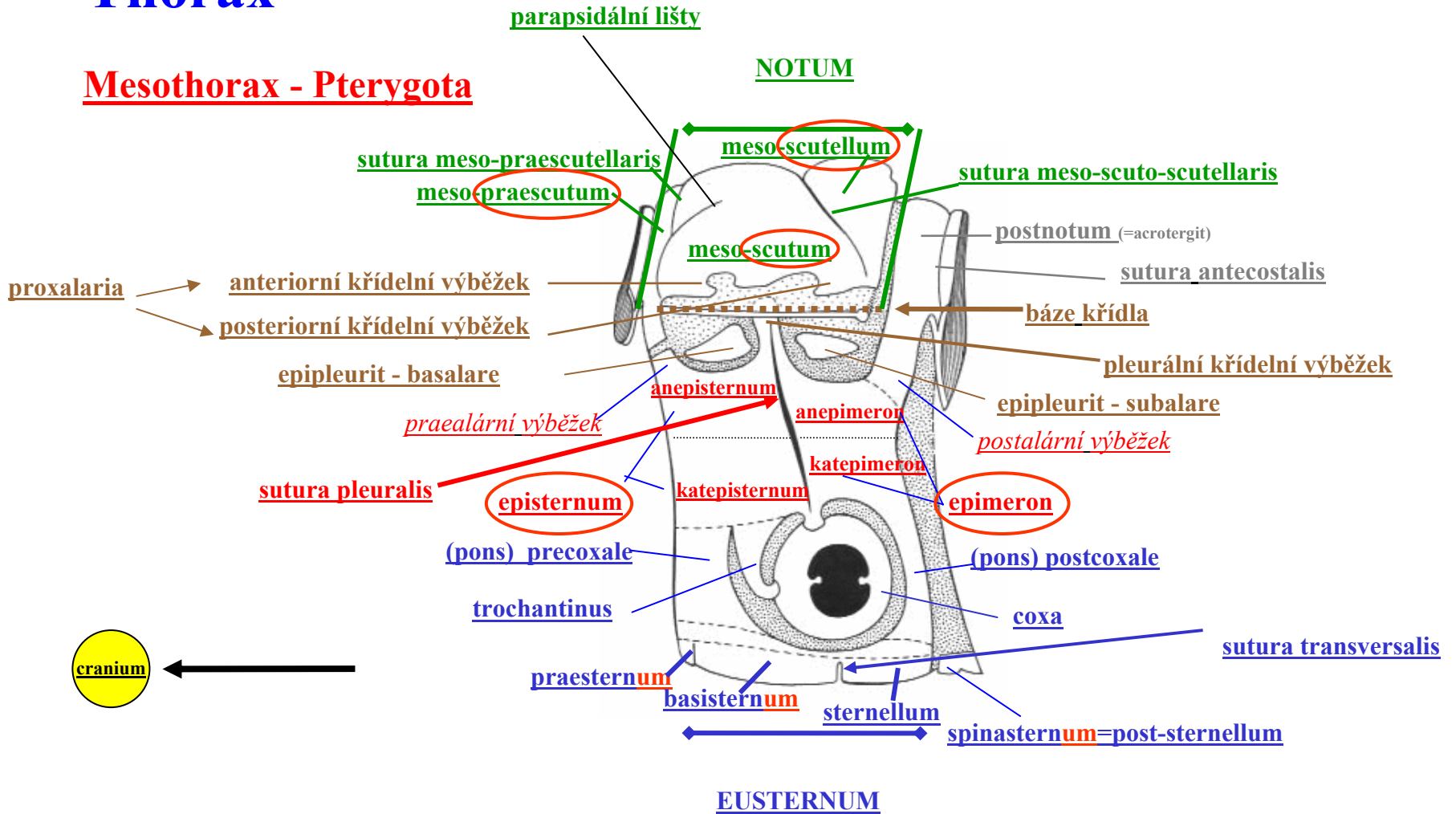
Thorax

Mesothorax - Pterygota



Thorax

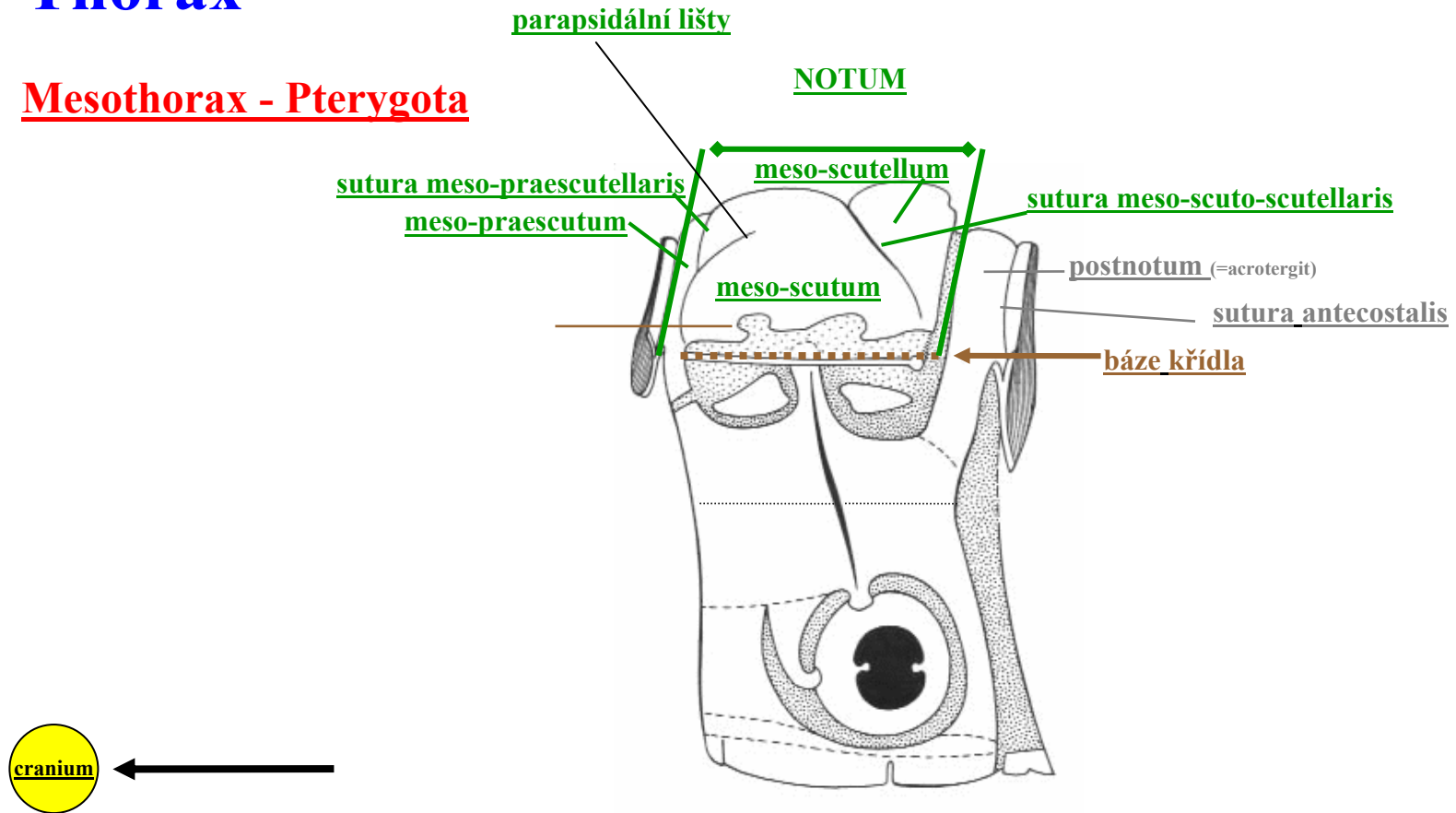
Mesothorax - Pterygota



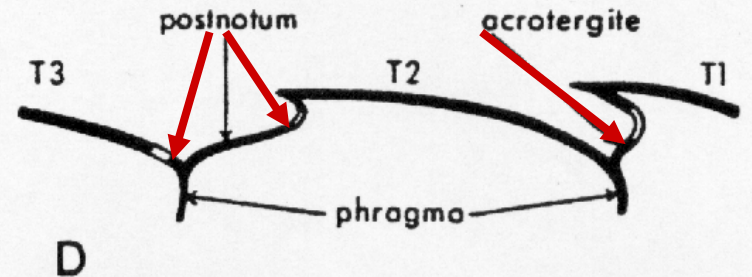
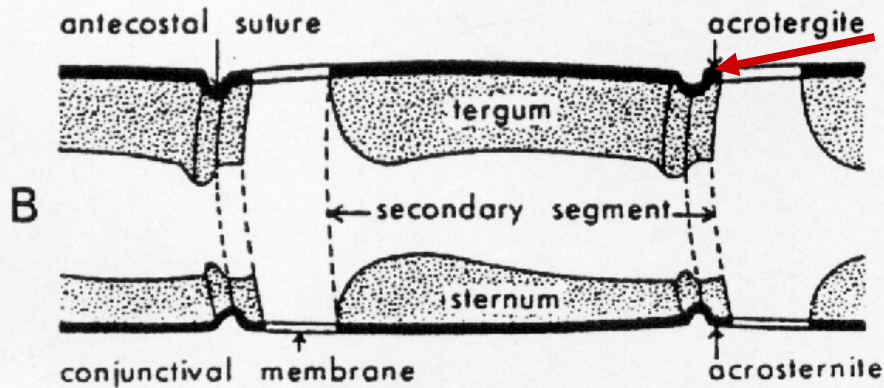
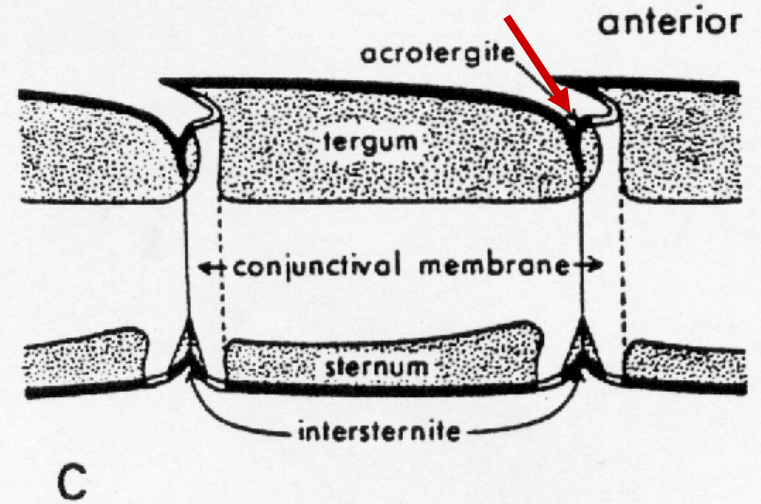
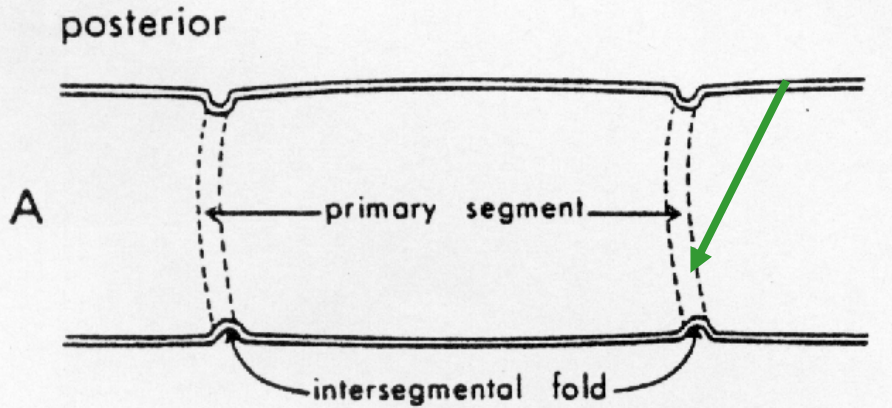
from the Greek roots
ana (“up”) and kata (“down”),

Thorax

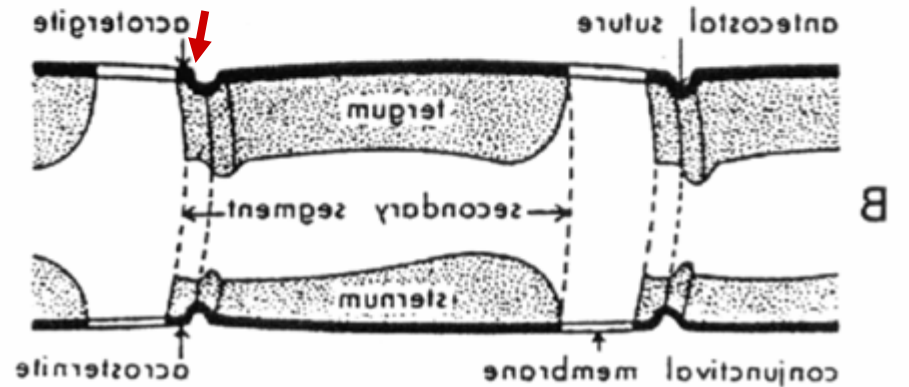
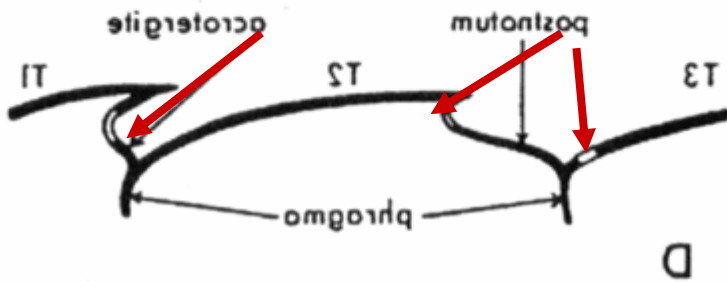
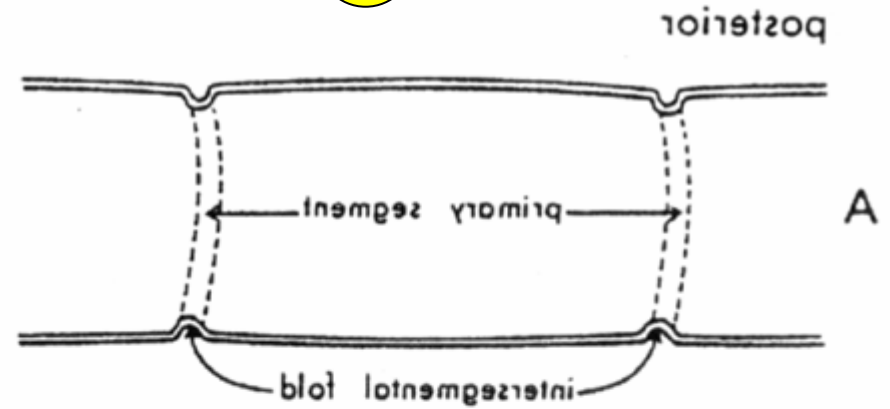
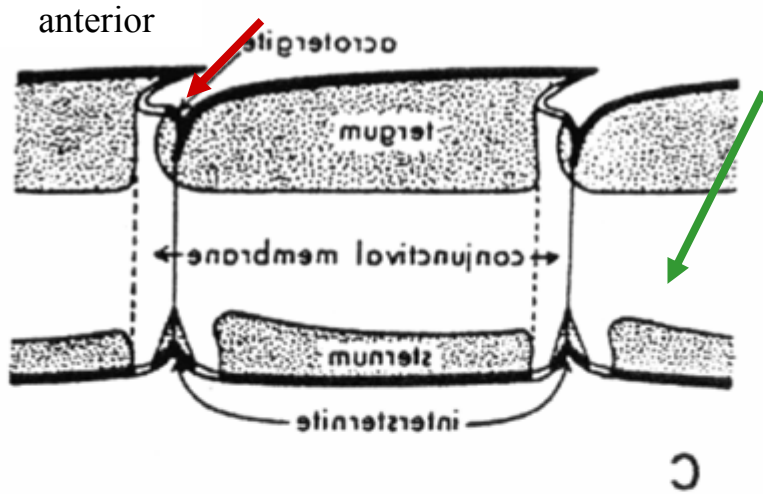
Mesothorax - Pterygota



Obecné schéma protentomonu primární a sekundární segmentace

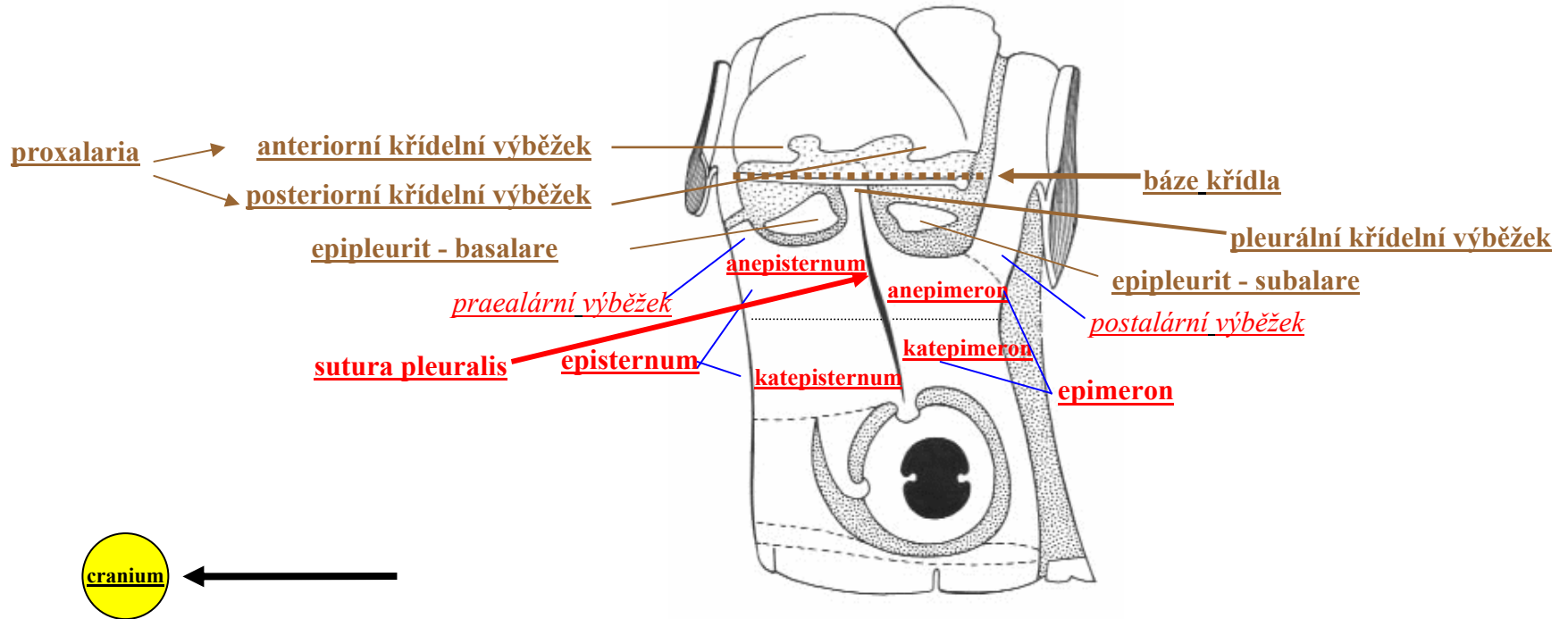


Obecné schéma protentomonu primární a sekundární segmentace



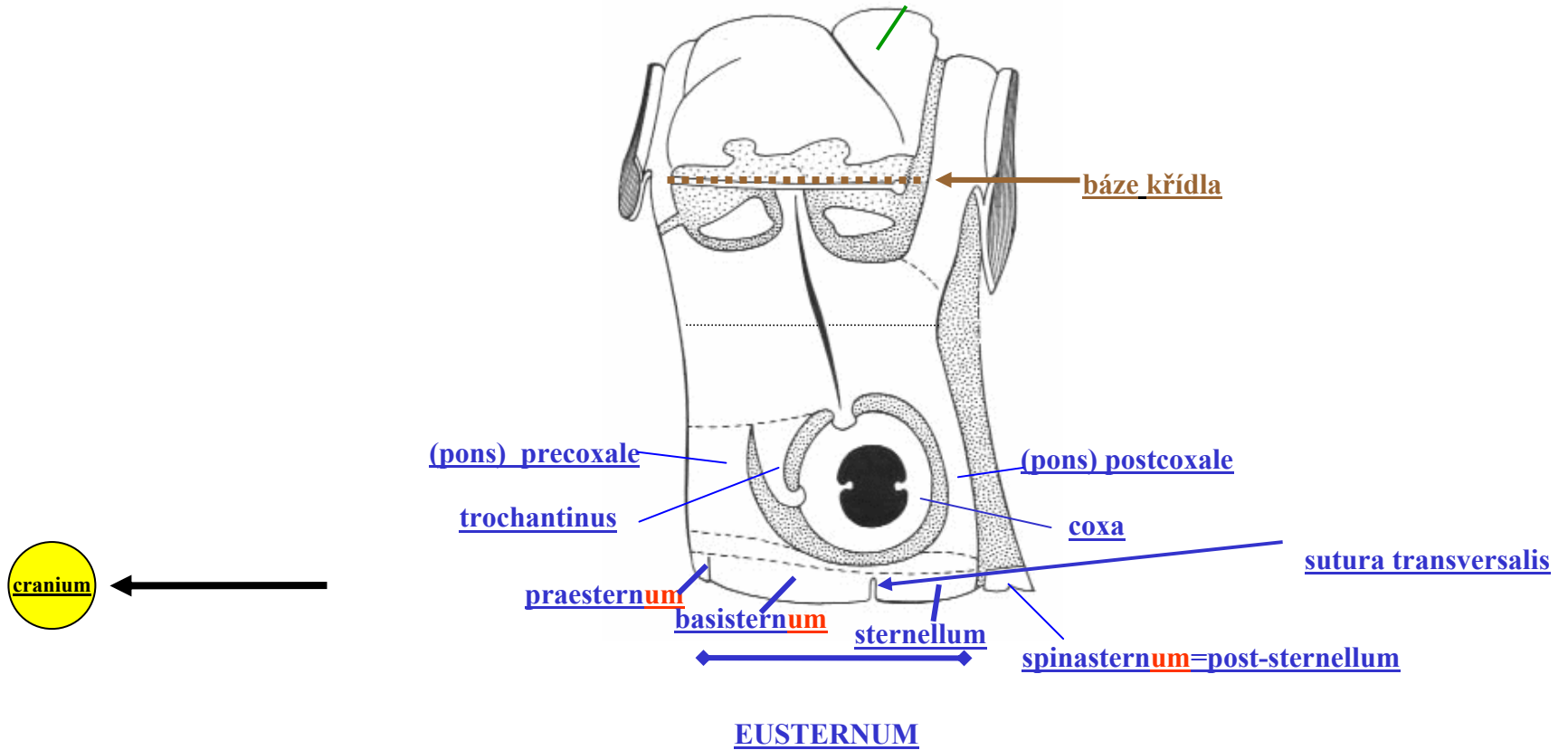
Thorax

Mesothorax - Pterygota



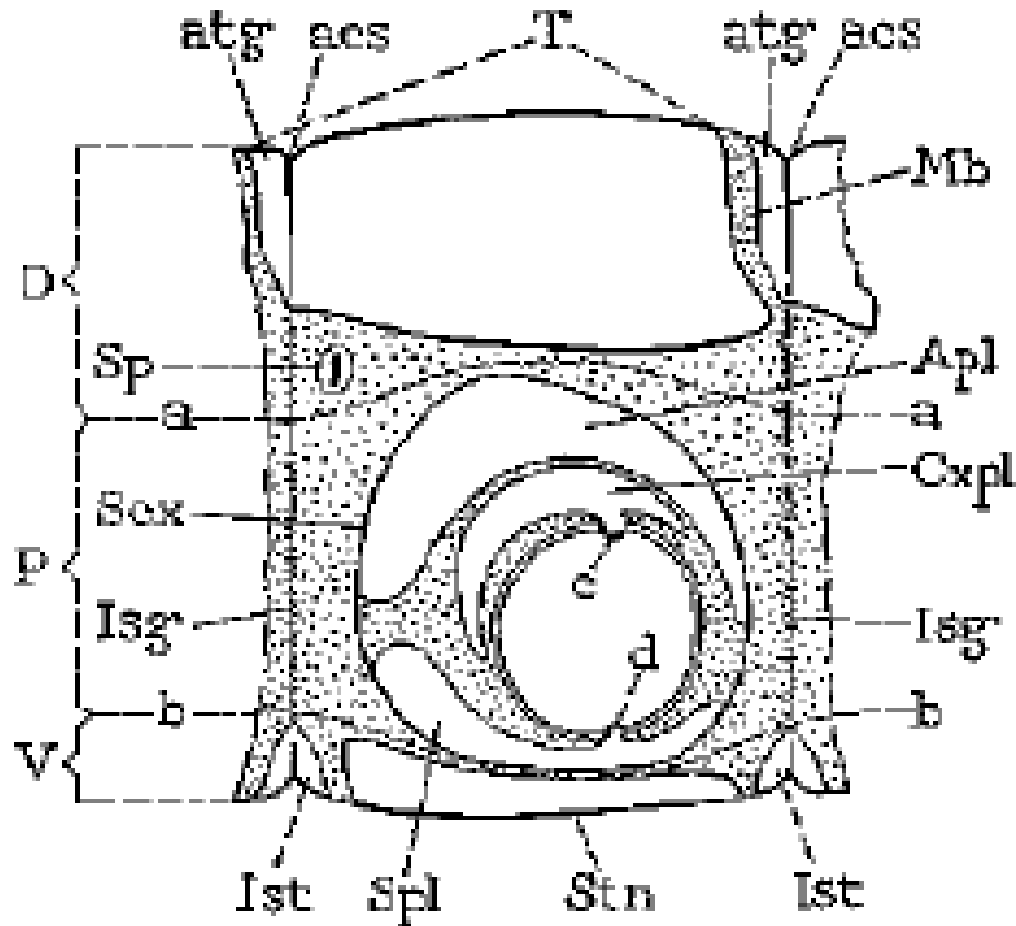
Thorax

Mesothorax - Pterygota

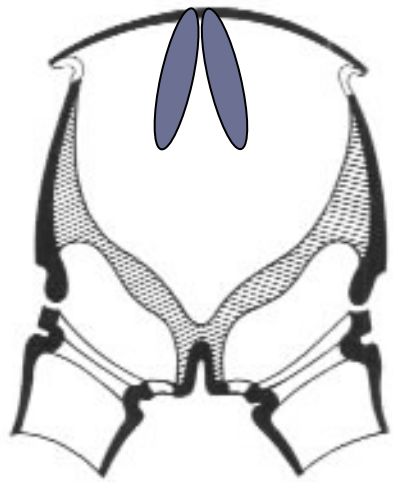
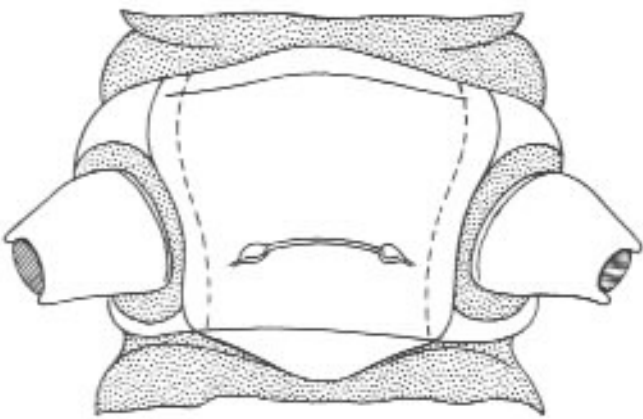


Thorax

Mesothorax – vývoj neokřídleného segmentu



Vnitřní kostra mesothoraxu



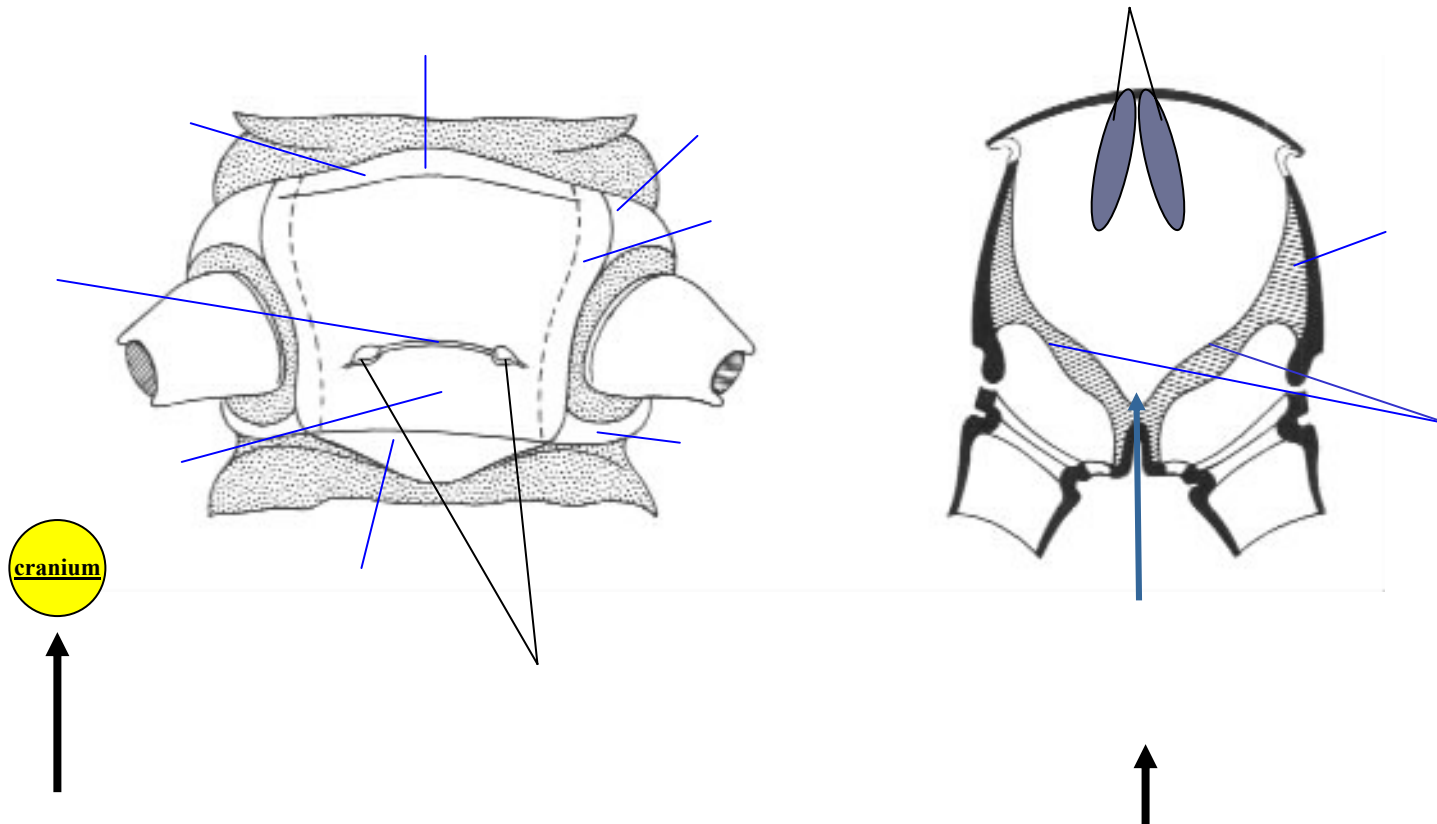
cranium



posteriorní pohled

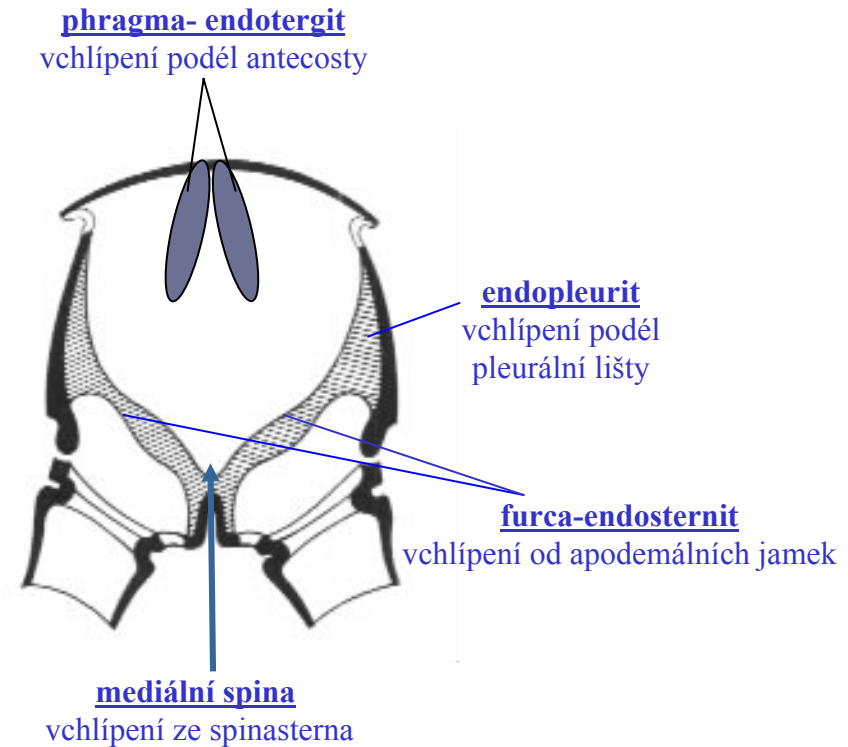
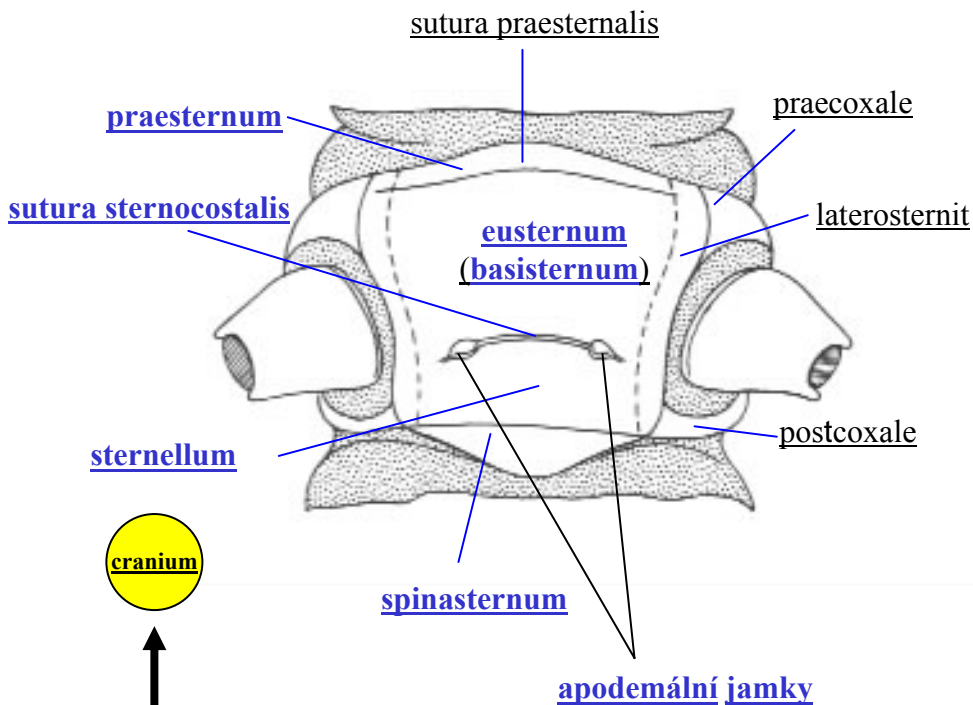


Vnitřní kostra mesothoraxu



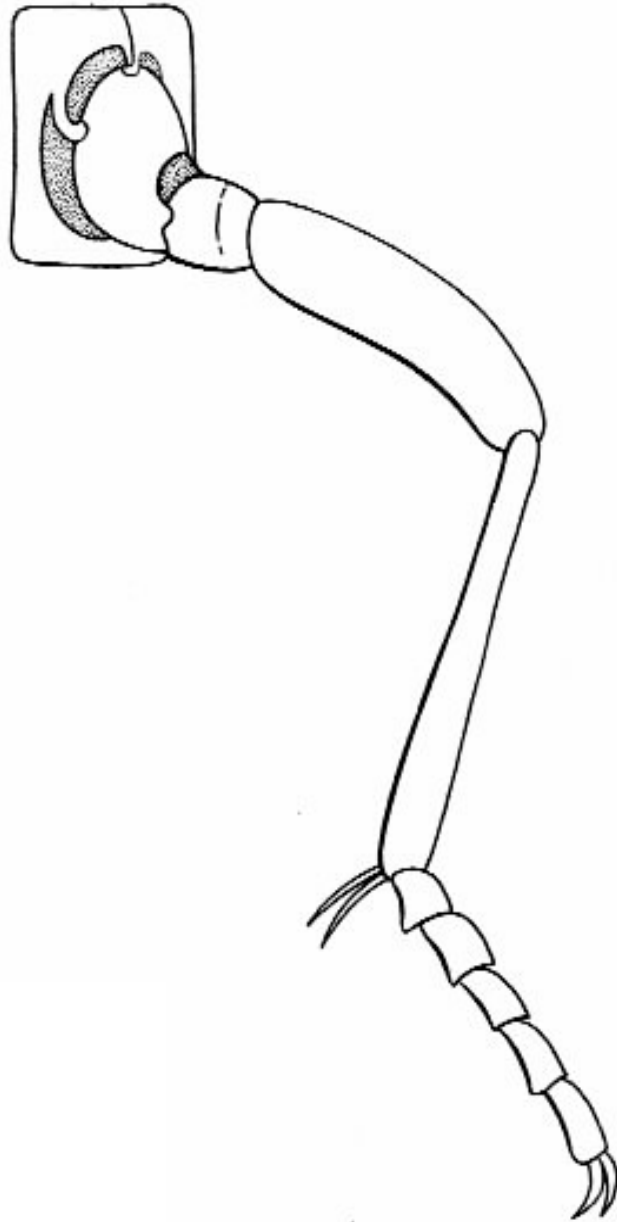
řez v transversální rovině - posteriorní pohled

Vnitřní kostra mesothoraxu

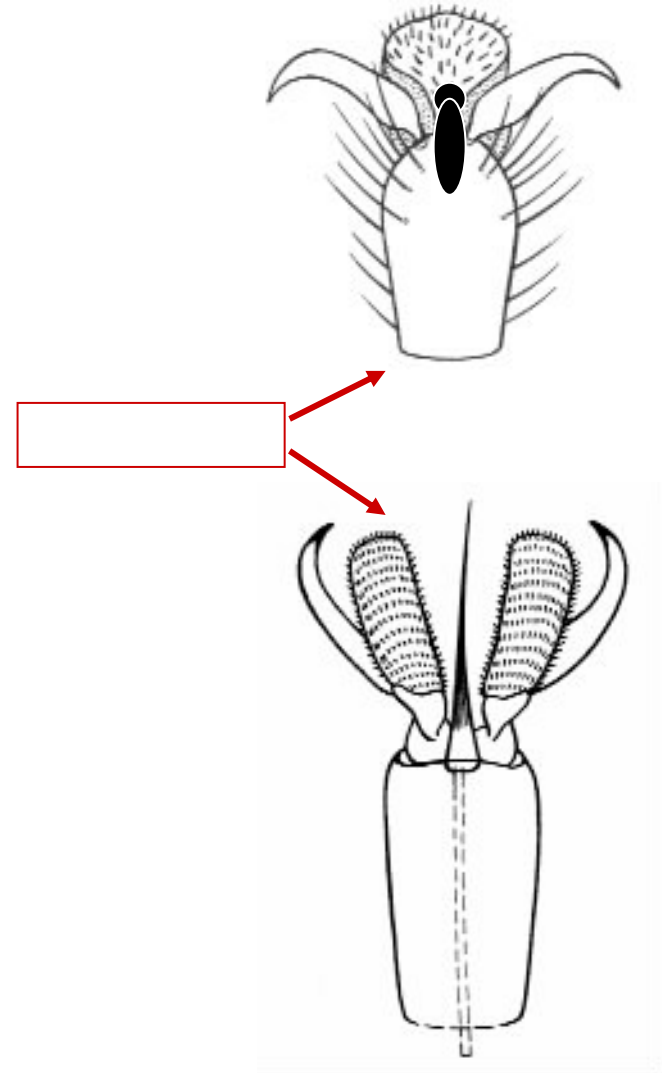


řez v transversální rovině - posteriorní pohled

Noha

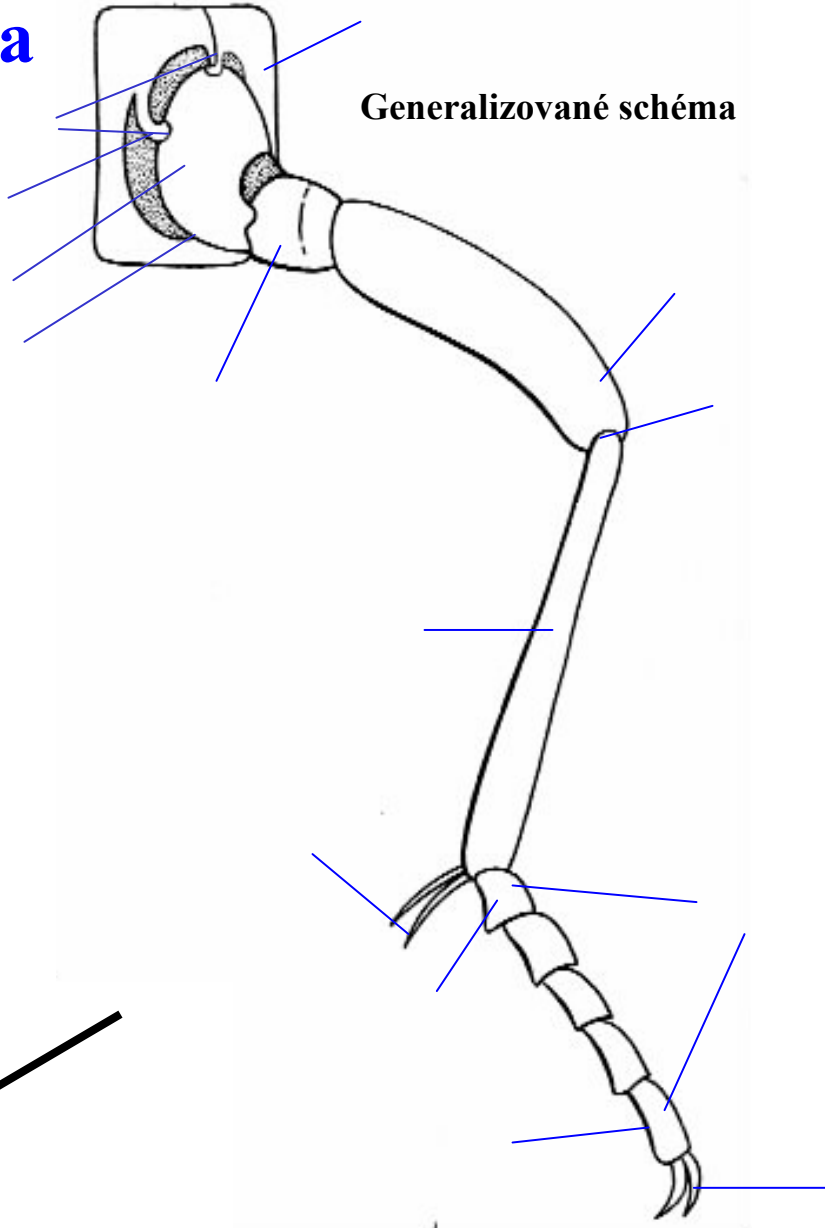


cranium

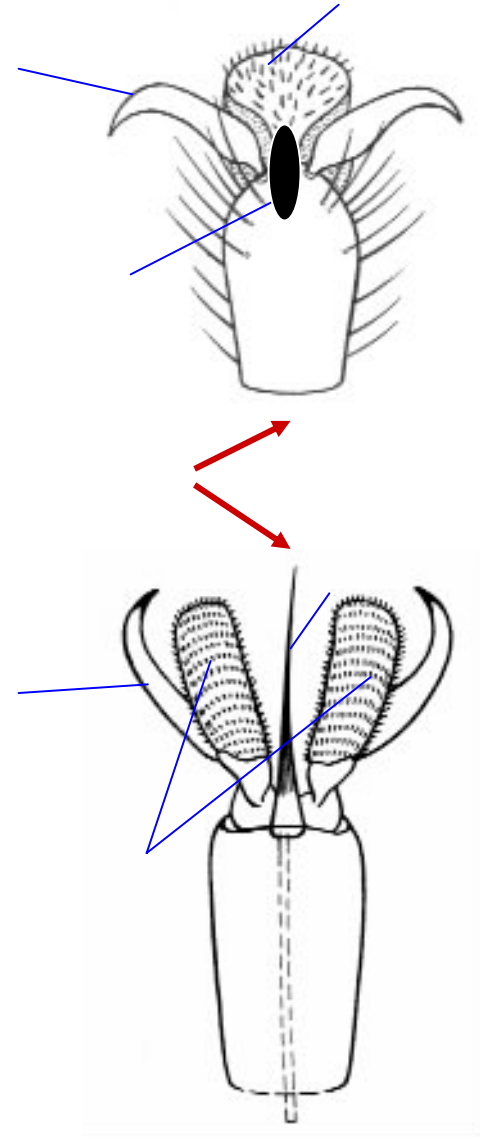


Noha

Generalizované schéma



cranium



Pes

Generalizované schéma

anterodorsální zakloubení

trochantinus

coxa

meron

(ventrální část coxy, v tomto pohledu není vidět)

trochanter
(někdy 2 čl.)

femur

kolenní kloub

tibia

calcaria

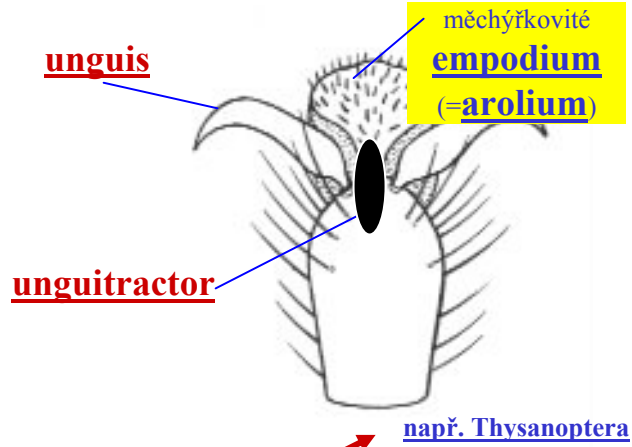
tarsus

tarsomera I = basitarsus

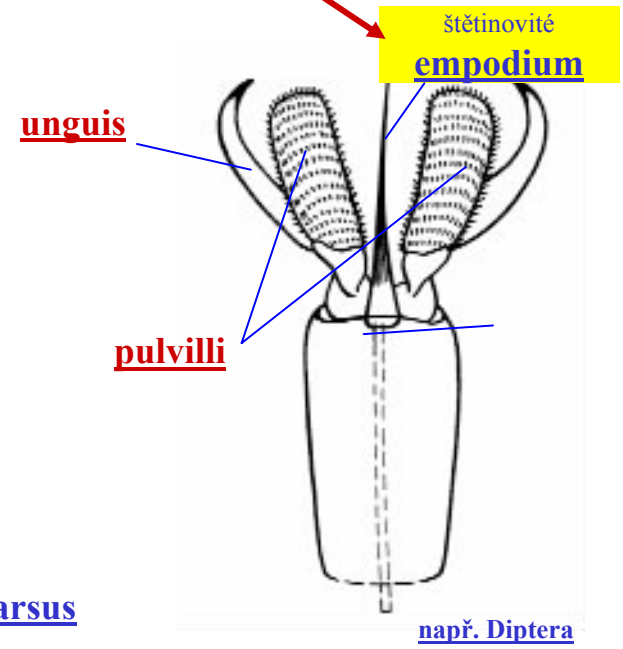
tarsomera V

pretarsus

cranium

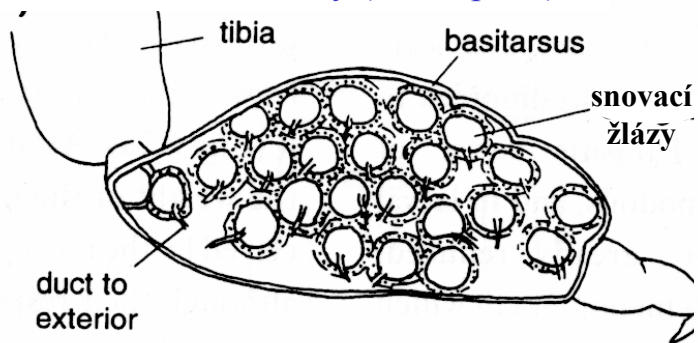


Pretarsus



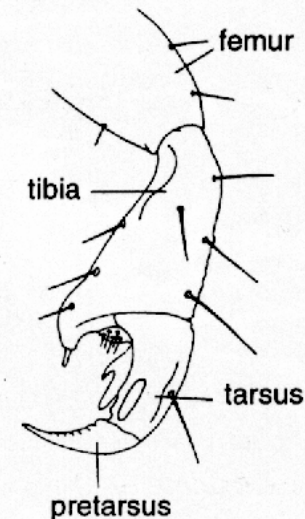
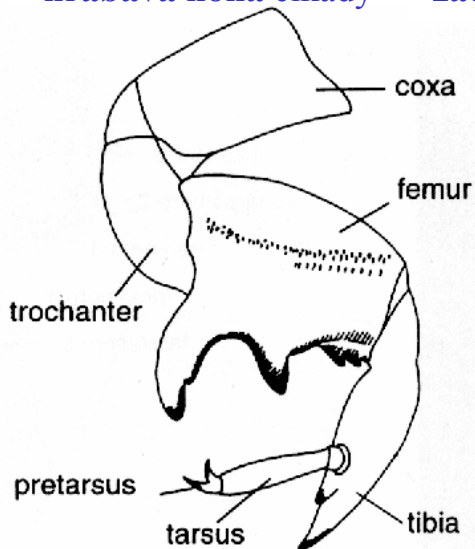
Modifikace nohou

předavá noha snovatky (Embioptera)



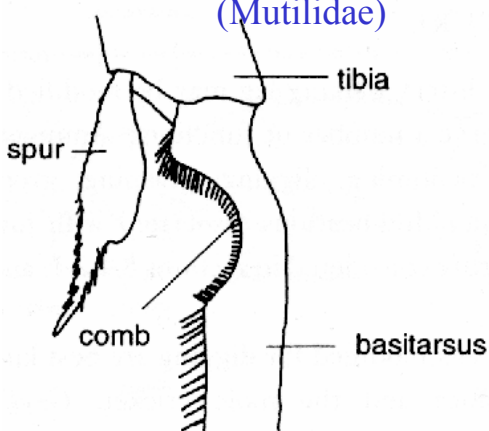
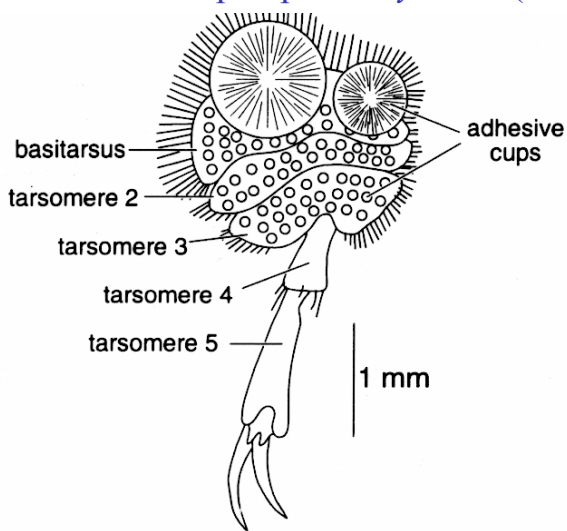
hrabavá noha cikády

záchytná noha vši *Haematopinus*



přilnavá noha potápníka *Dytiscus* (Coleoptera)

čisticí noha kodulky (Mutilidae)



sběrací noha včely

inside

outside

