



Bi 6760
Základy entomologie
Abdomen, terminalia

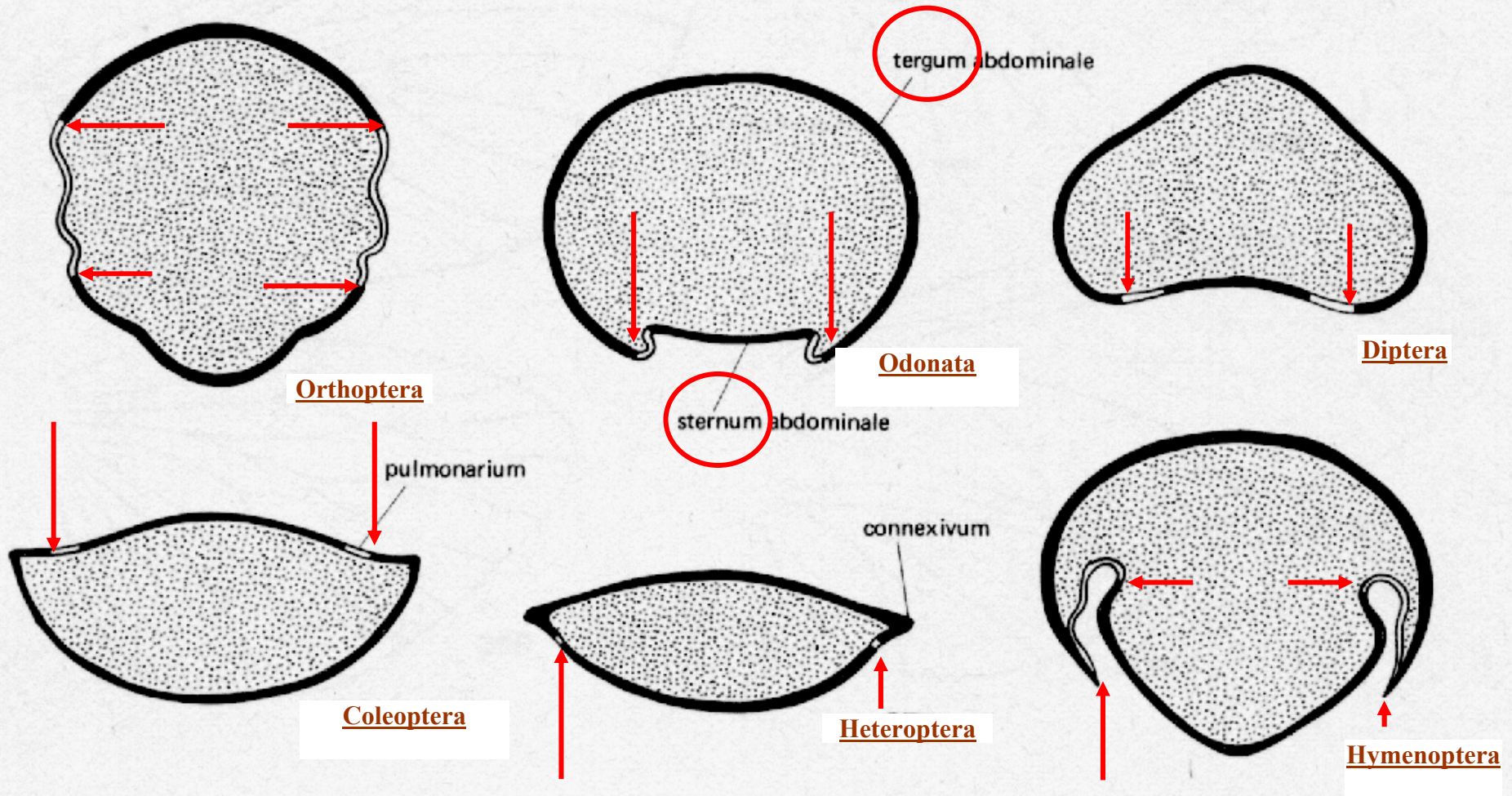
2015

RNDr. Andrea Tóthová, Ph.D.
tothova@sci.muni.cz



INVESTICE DO ROZVOJE VZDĚLÁVÁNÍ

Abdomen - modifikace terga a sterna

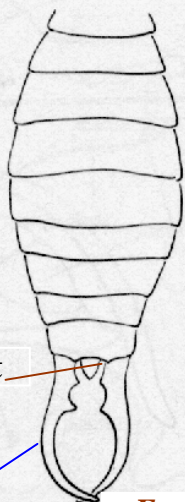


řez v transversální rovině - posteriorní pohled

Modifikace abdomenu



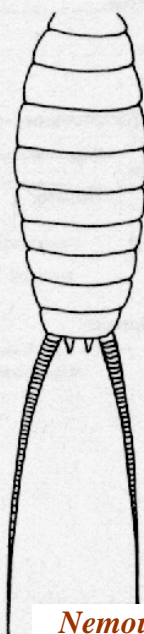
Anax
(Odonata)



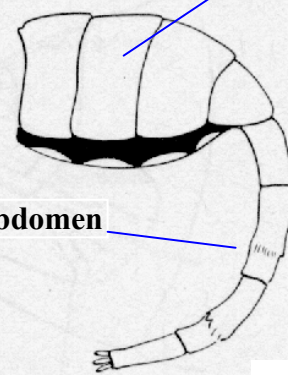
epiproct

cerky

Forficula
(Dermaptera)



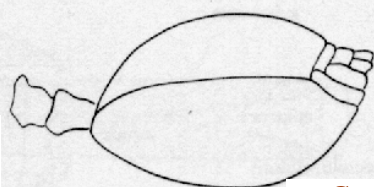
Nemoura
(Plecoptera)



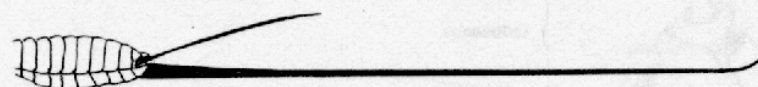
praeadomen

postabdomen

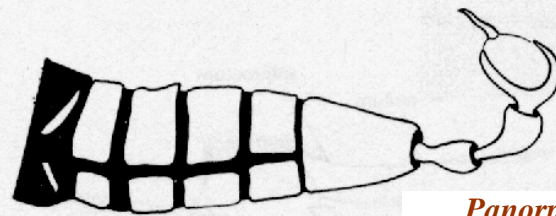
Musca
(Diptera)



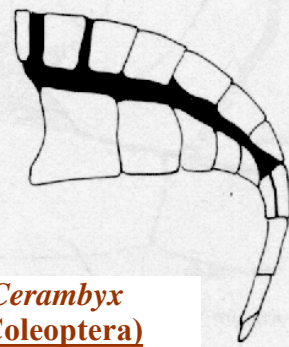
Cryptocerus
(Hymenoptera)



Ephemera
(Ephemeroptera)



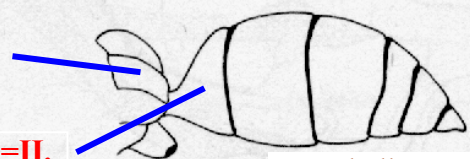
Panorpa
(Mecoptera)



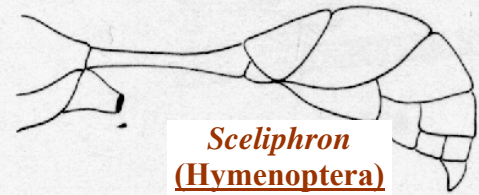
Cerambyx
(Coleoptera)

propodeum
=I. abd. čl.

petiolus =II.
abd. čl.



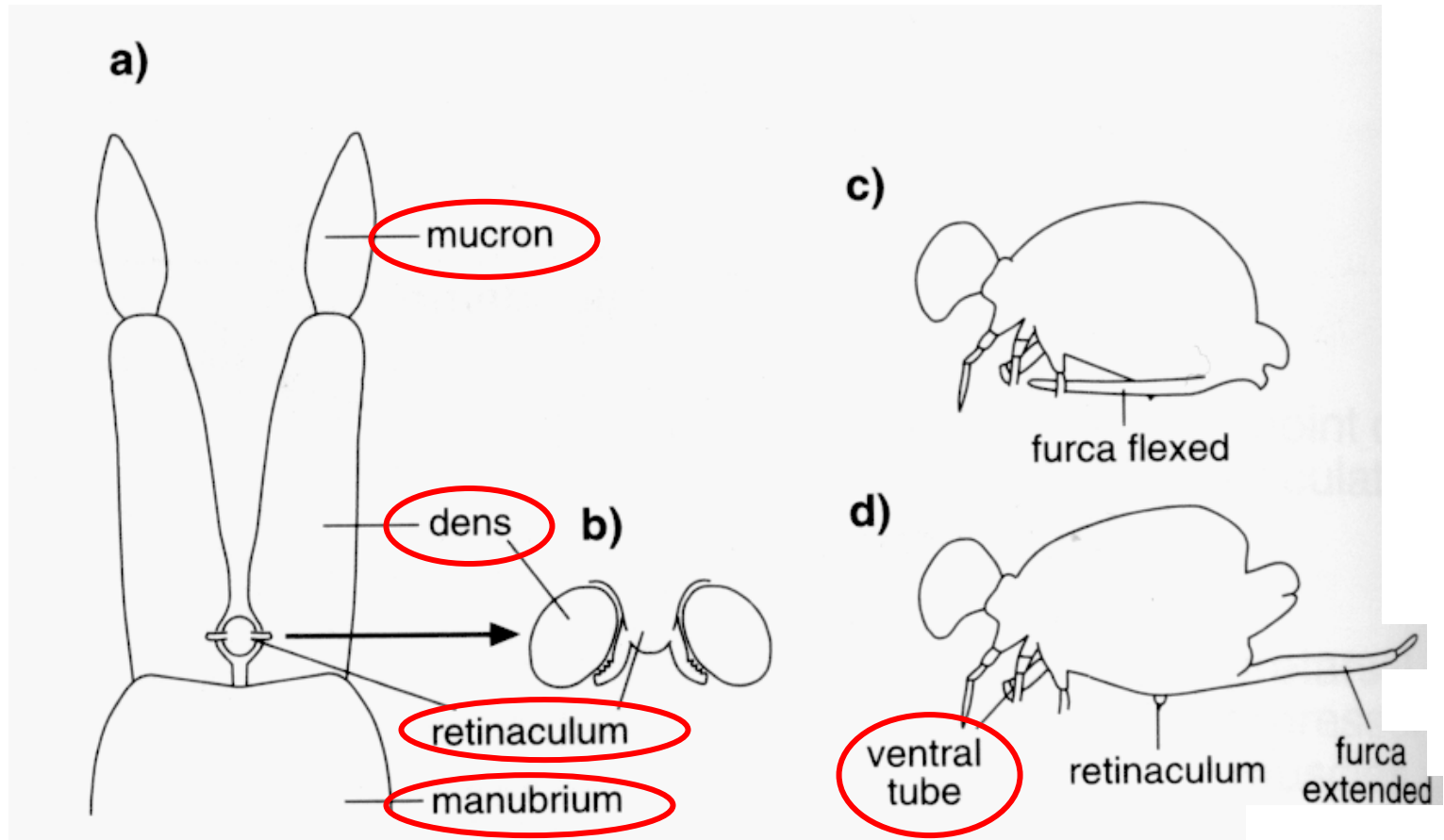
žahalka *Scolia*
(Hymenoptera)



Sceliphron
(Hymenoptera)

Abdomen - modifikace končetin

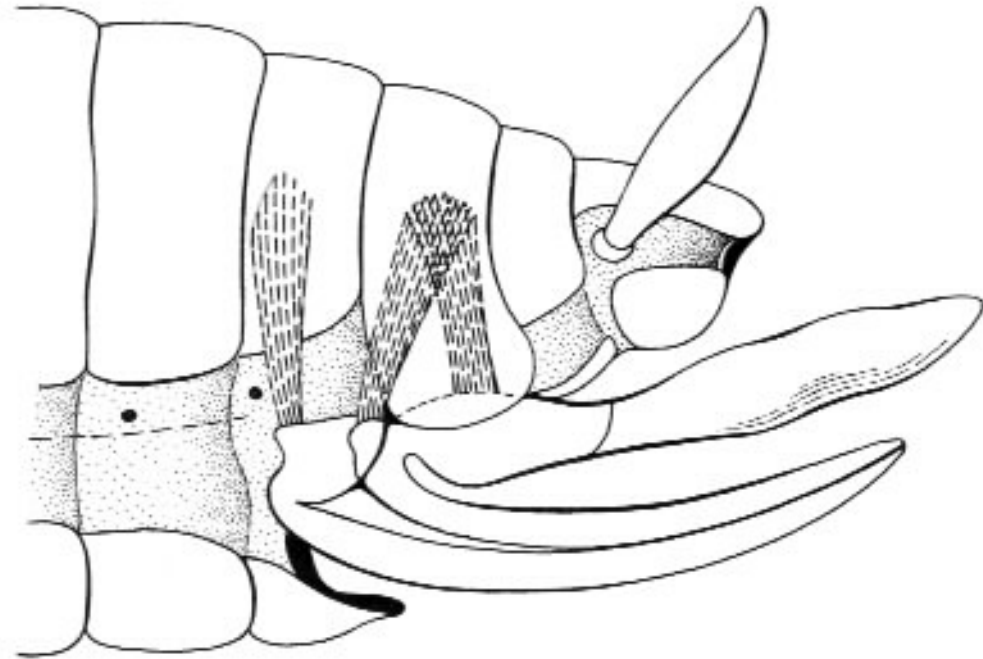
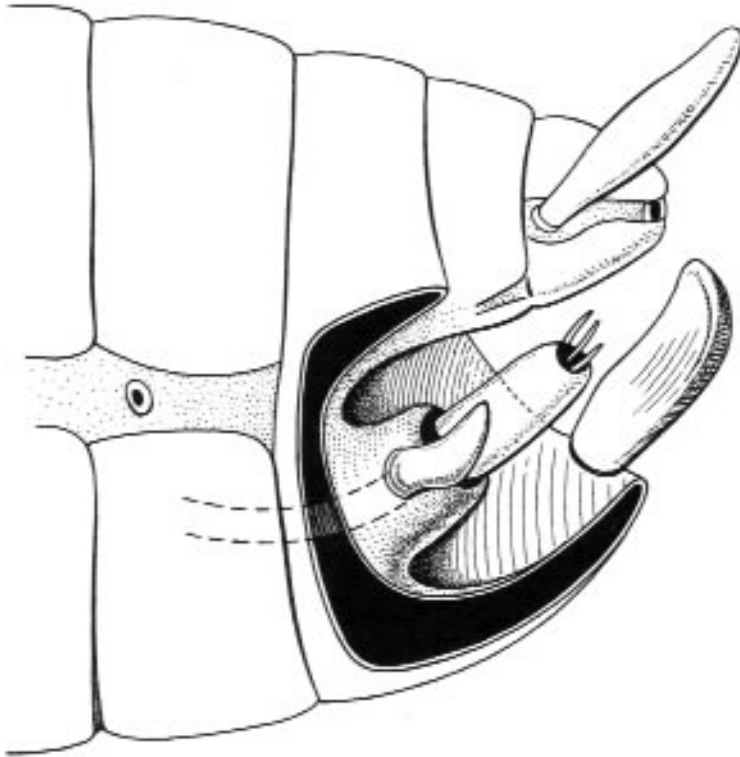
Skákací aparát Collembola



Terminalia

Idealizované samčí pohlavní orgány

Idealizované samičí pohlavní orgány orthopteroidního typu



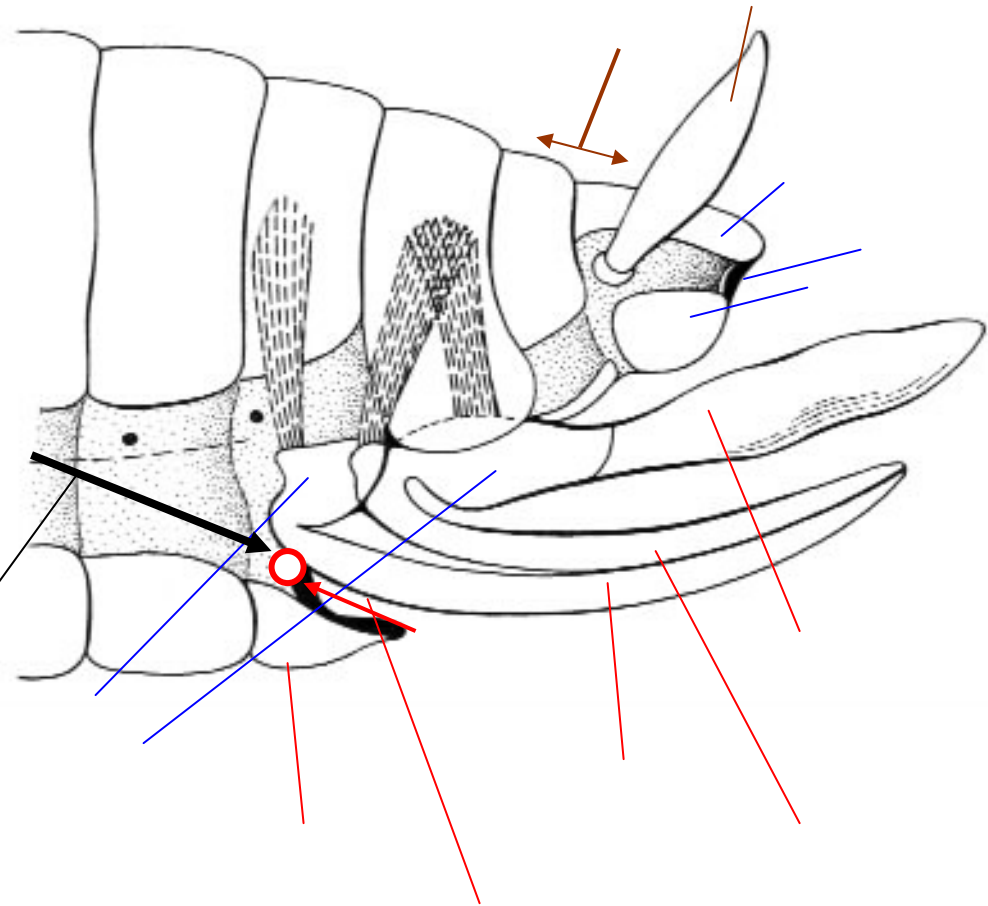
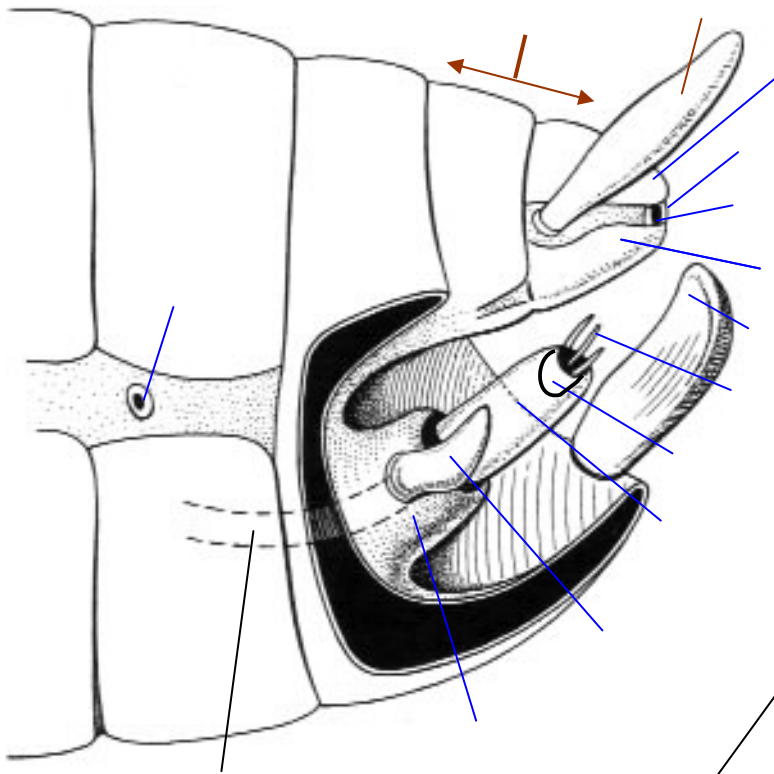
cranium



Terminalia

Idealizované samčí pohlavní orgány

Idealizované samičí pohlavní orgány orthopteroidního typu



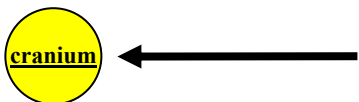
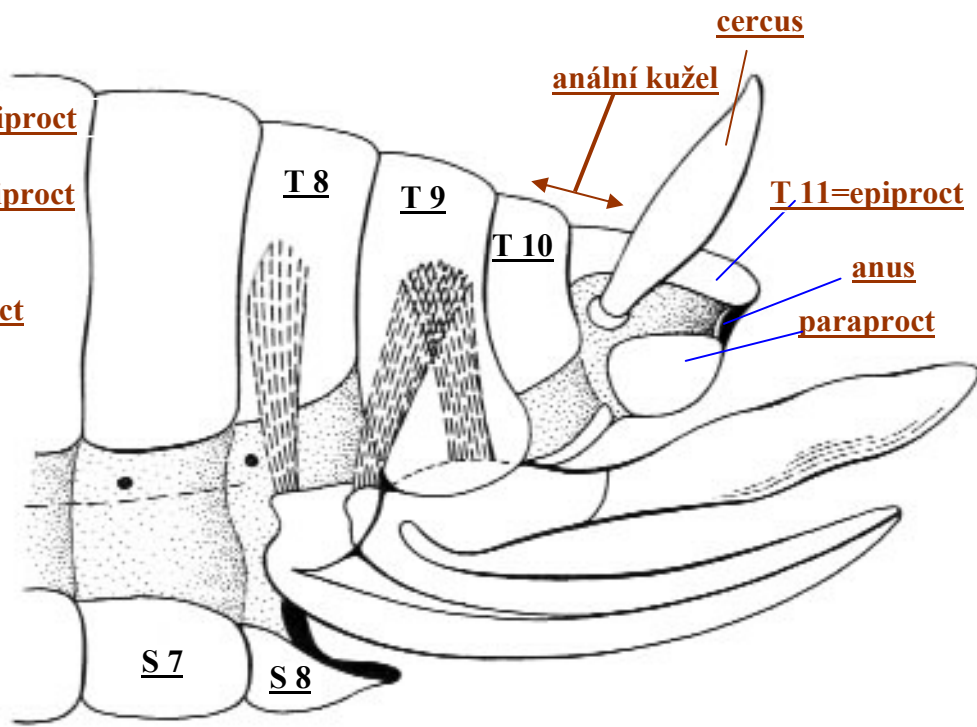
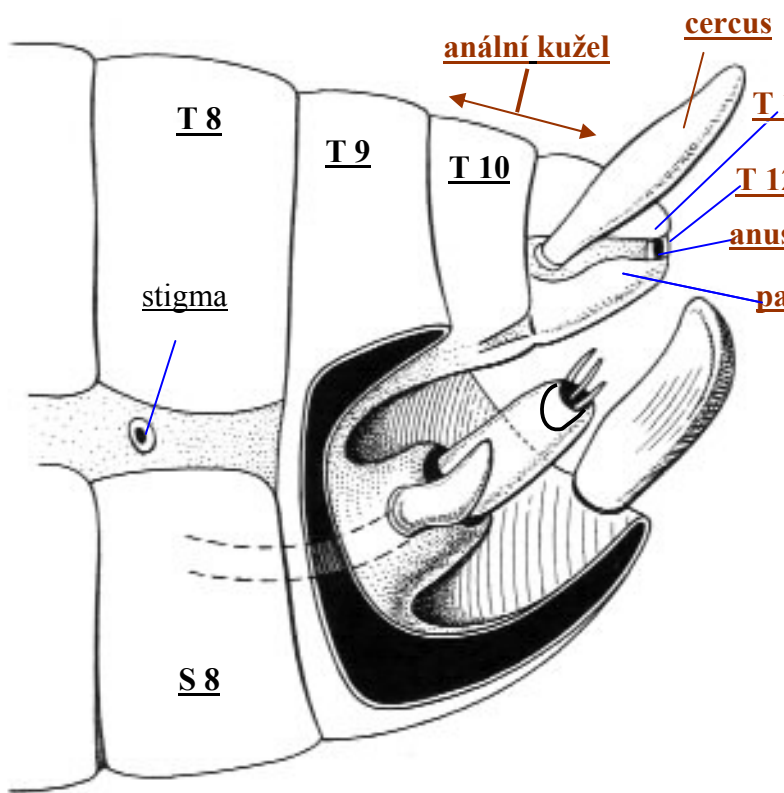
cranium



Terminalia

Idealizované samčí pohlavní orgány

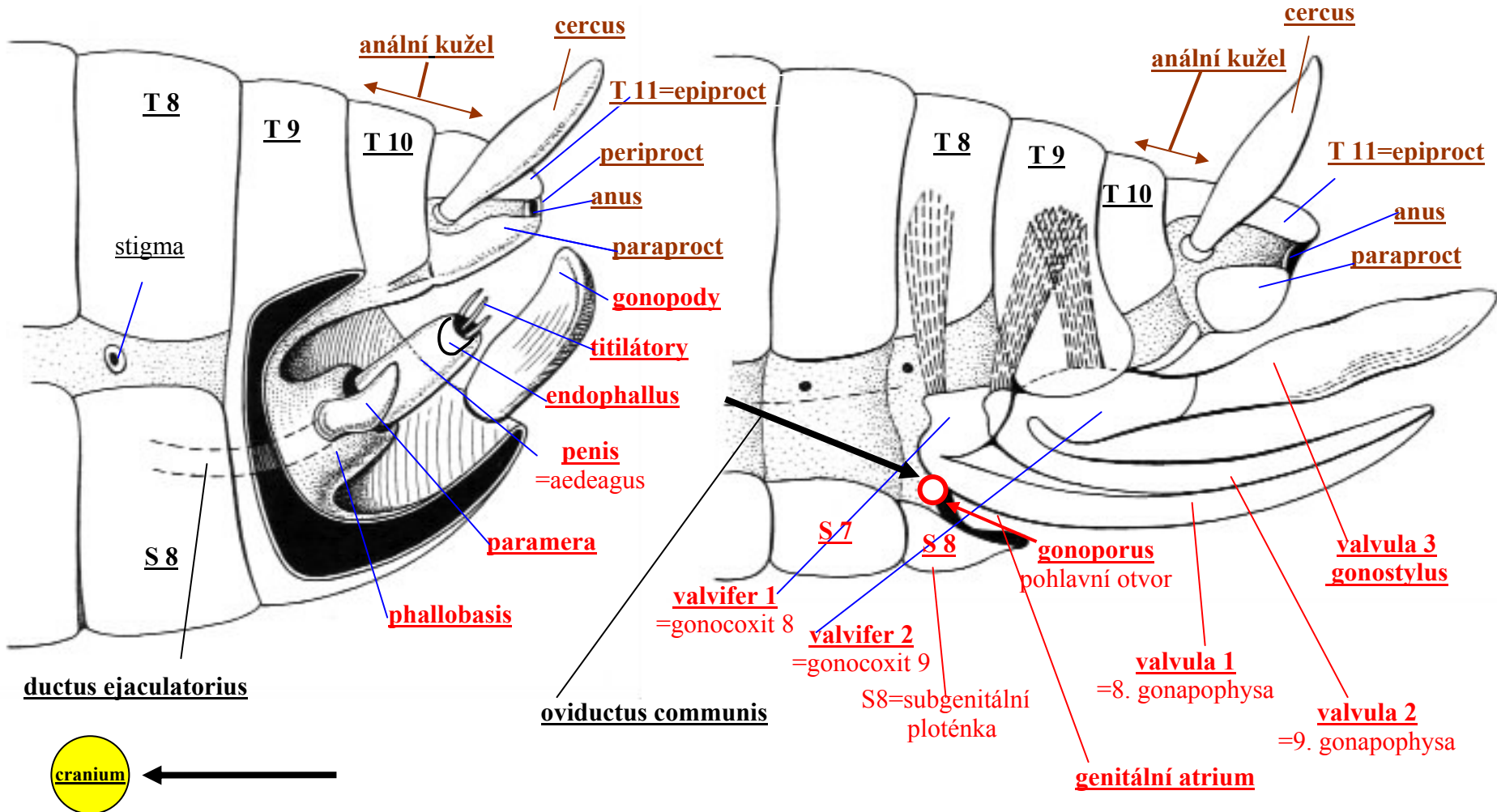
Idealizované samičí pohlavní orgány orthopteroidního typu



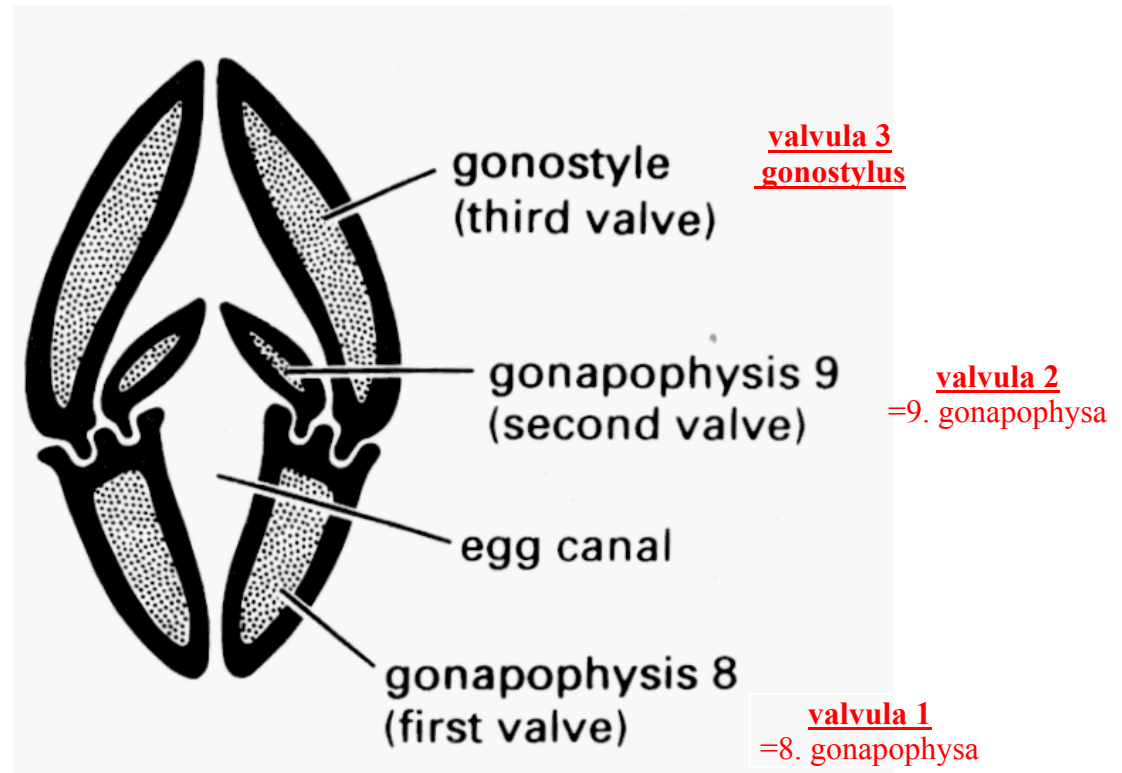
Terminalia

Idealizované samčí pohlavní orgány

Idealizované samičí pohlavní orgány orthopteroidního typu



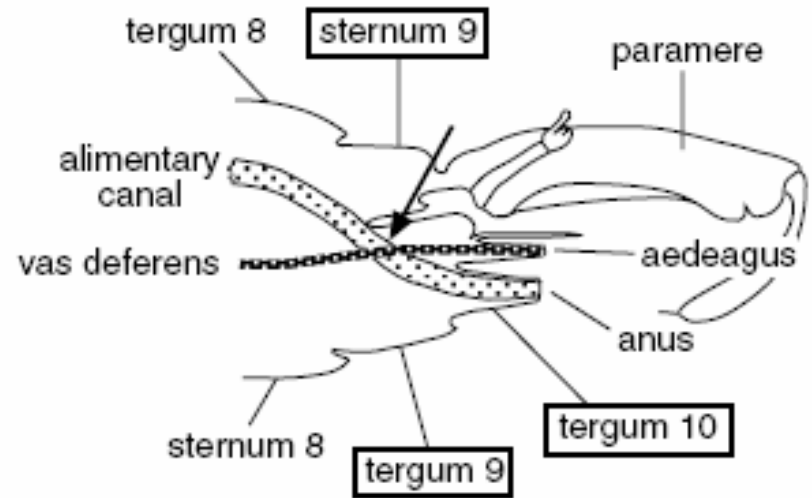
Idealizované samičí pohlavní orgány orthopteroidního typu



↑
řez v transverzální rovině - posteriorní pohled

Rotace samčích terminálií u Diptera

a) 180° rotation



b) 360° rotation

