



Bi 6760
Základy entomologie

Circulatory system

2015

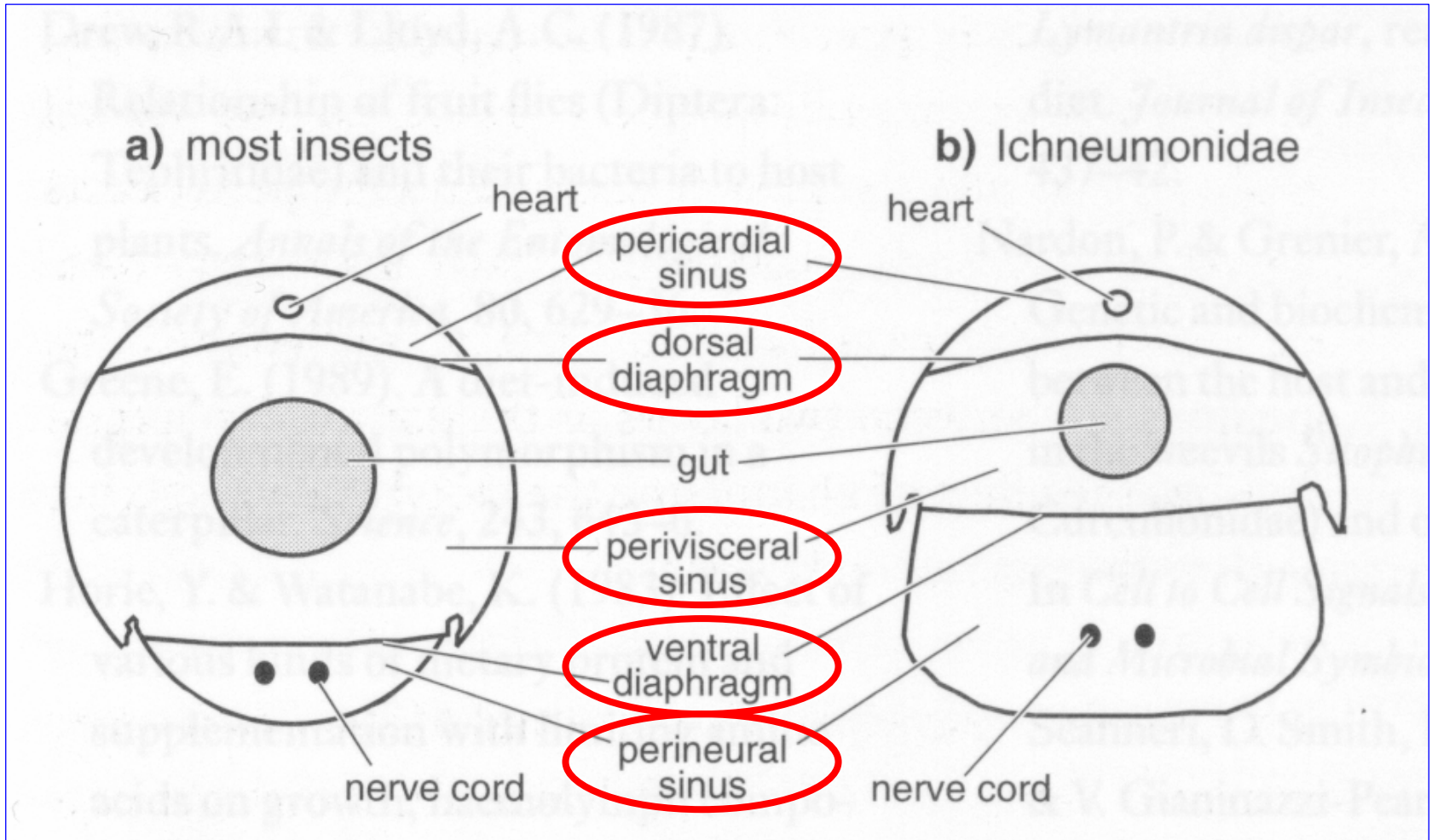
RNDr. Andrea Tóthová, Ph.D.
tothova@sci.muni.cz



INVESTICE DO ROZVOJE VZDĚLÁVÁNÍ

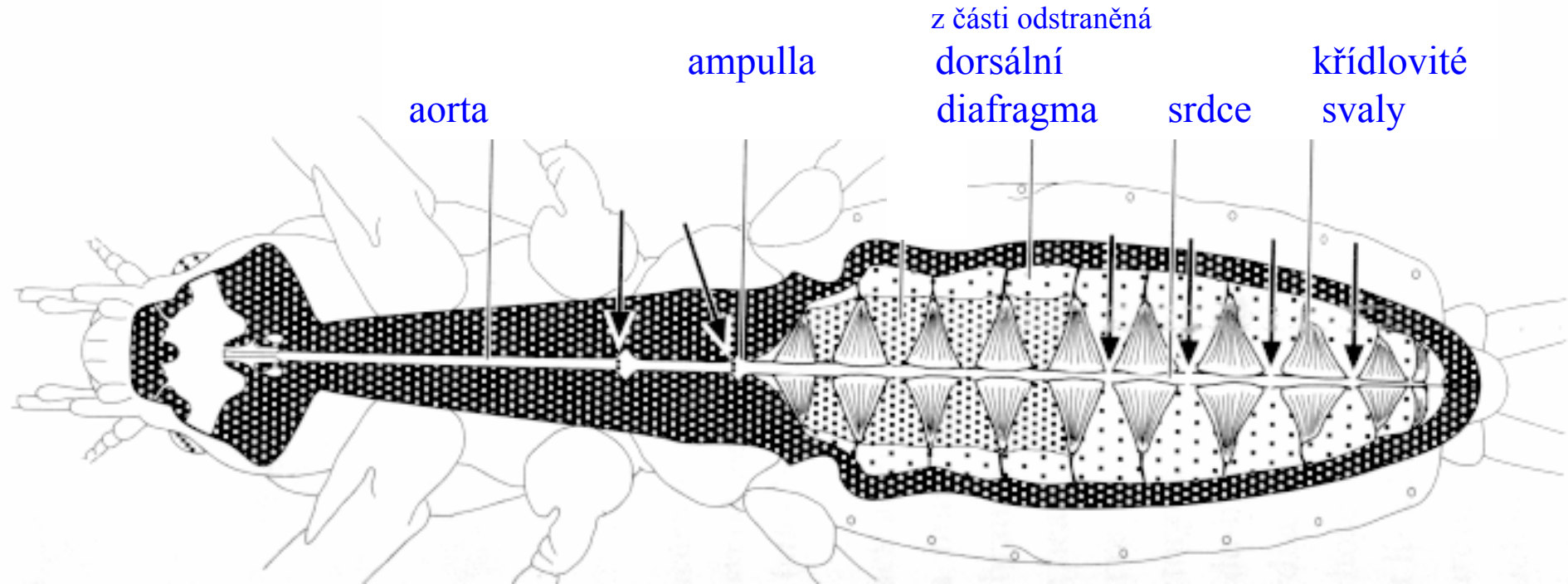
Haemocoel ve vazbě na cirkulaci hemolymfy (krve)

transversální pohled

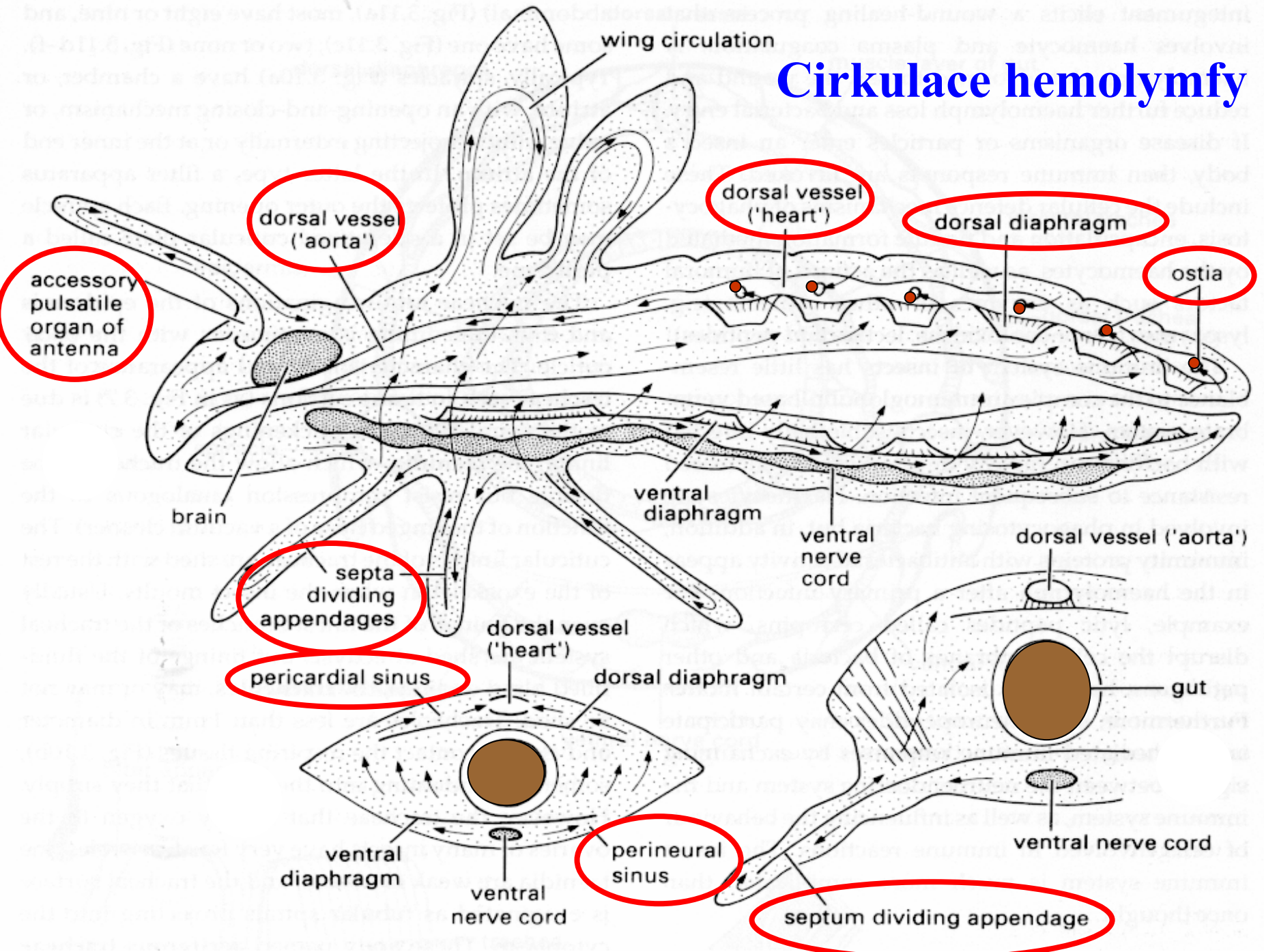


Orgány cirkulace krve - *Gryllotalpa*

ventrální pohled, dorsální diafragma z části odstraněna

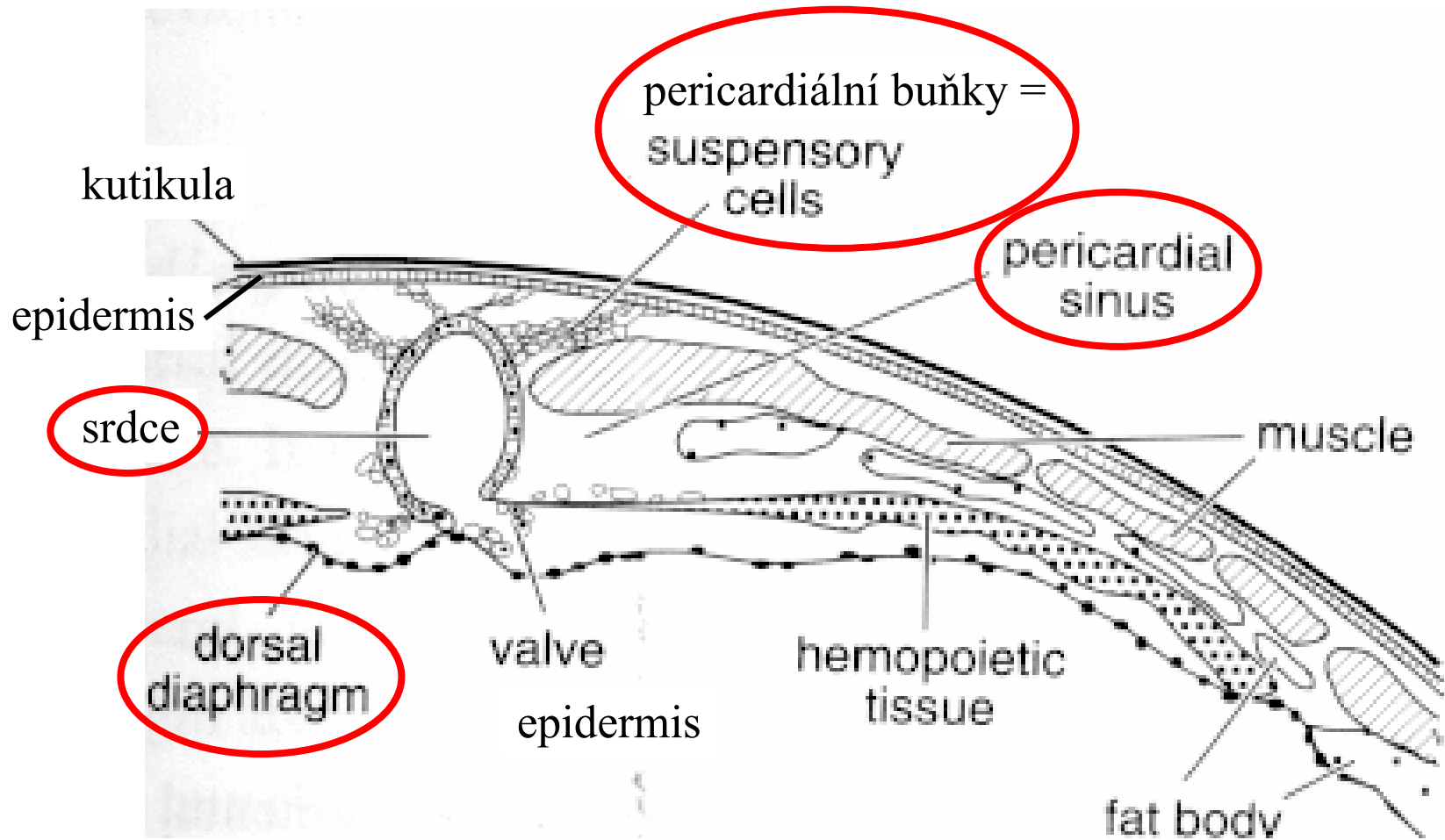


Cirkulace hemolymfy



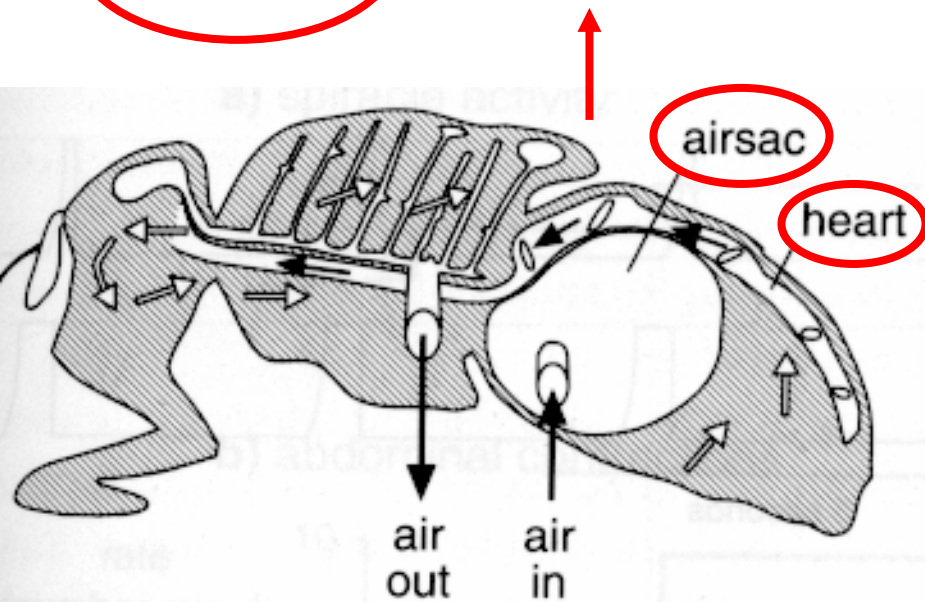
Pericardiální sinus abdomenu - *Gryllotalpa*

transversální pohled

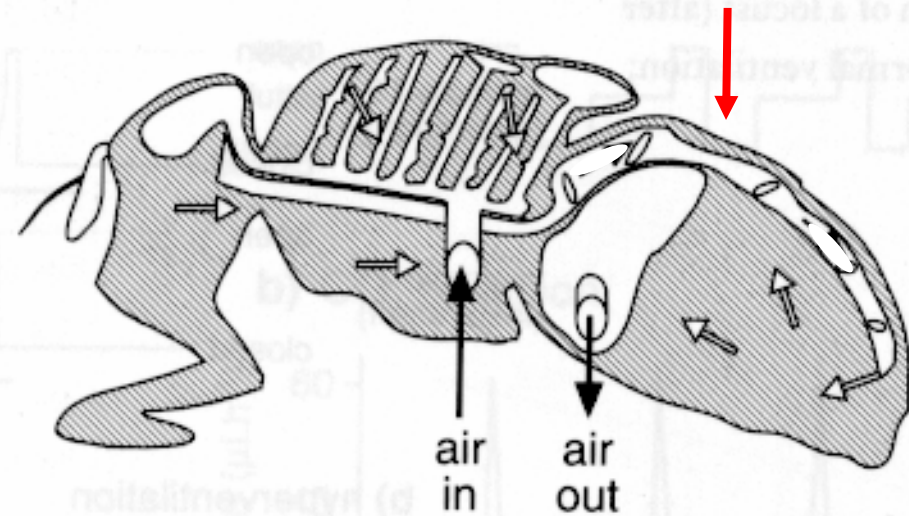


Funkce vzdušných vaků při cirkulaci krve

systola

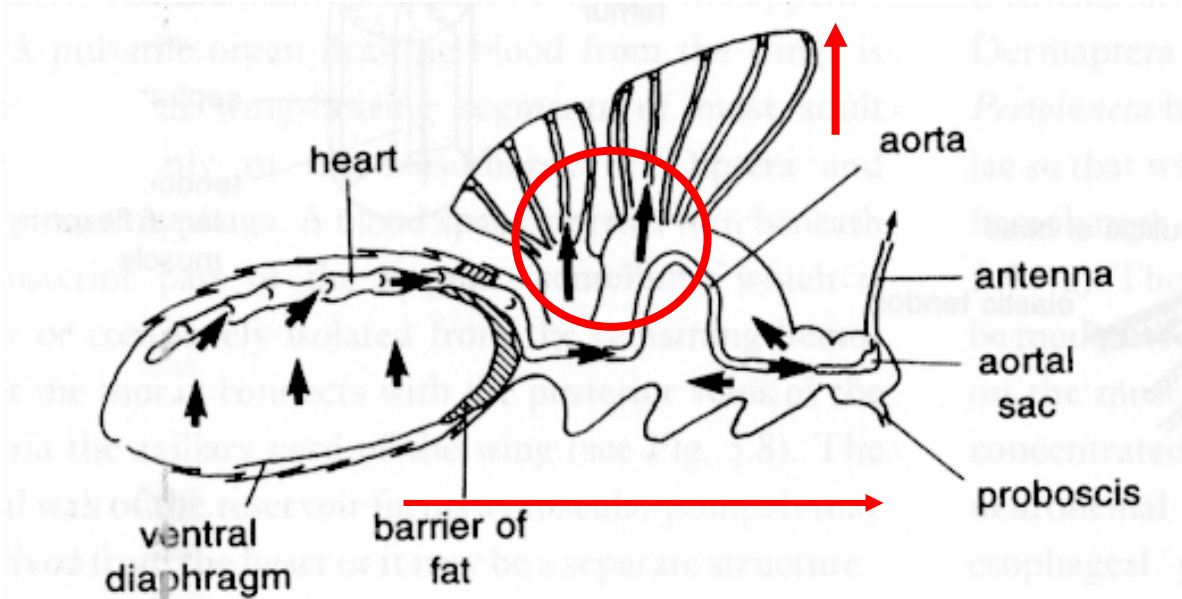


diastola

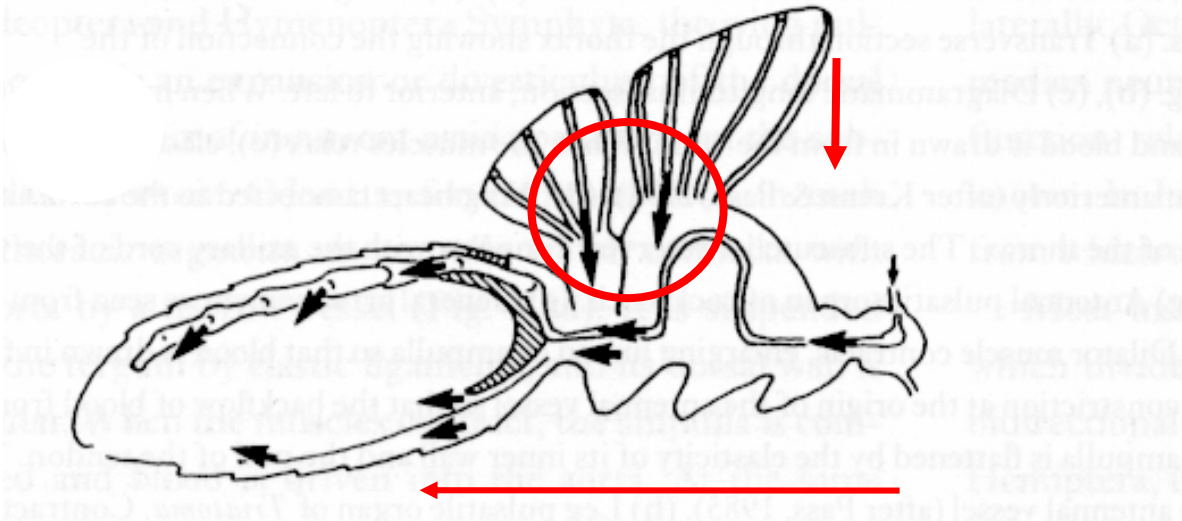


Funkce křídel v cirkulačním systému

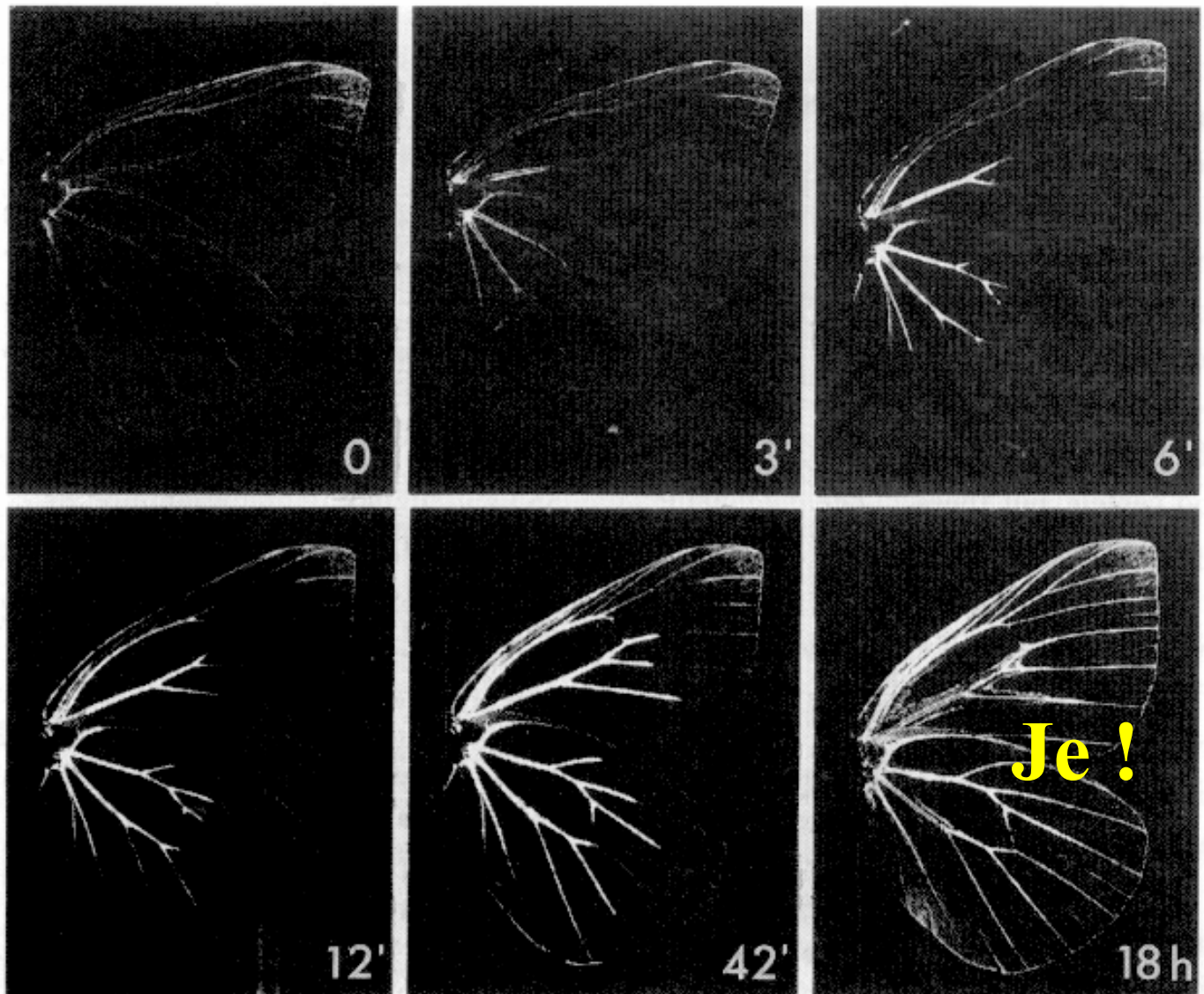
systola



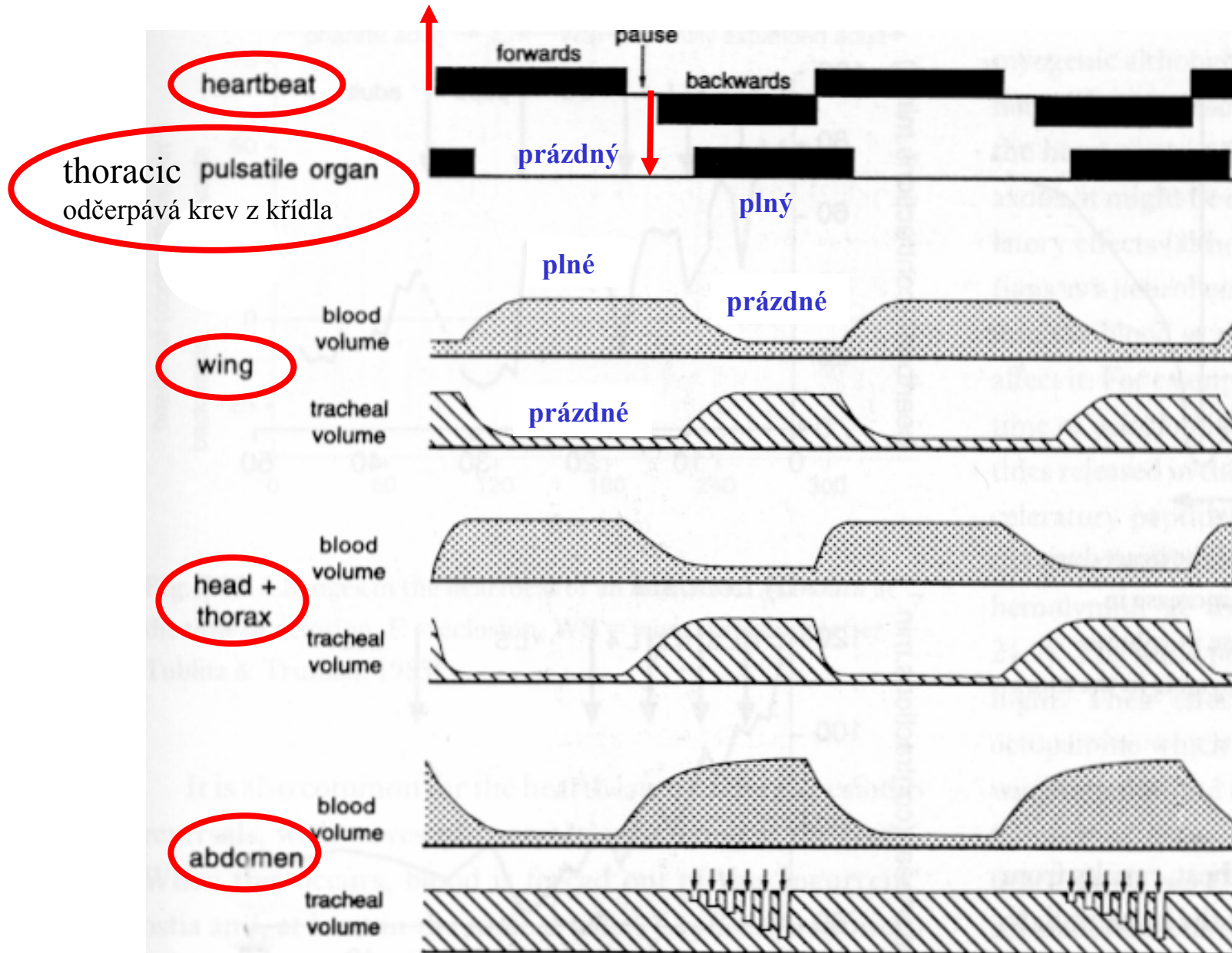
diastola



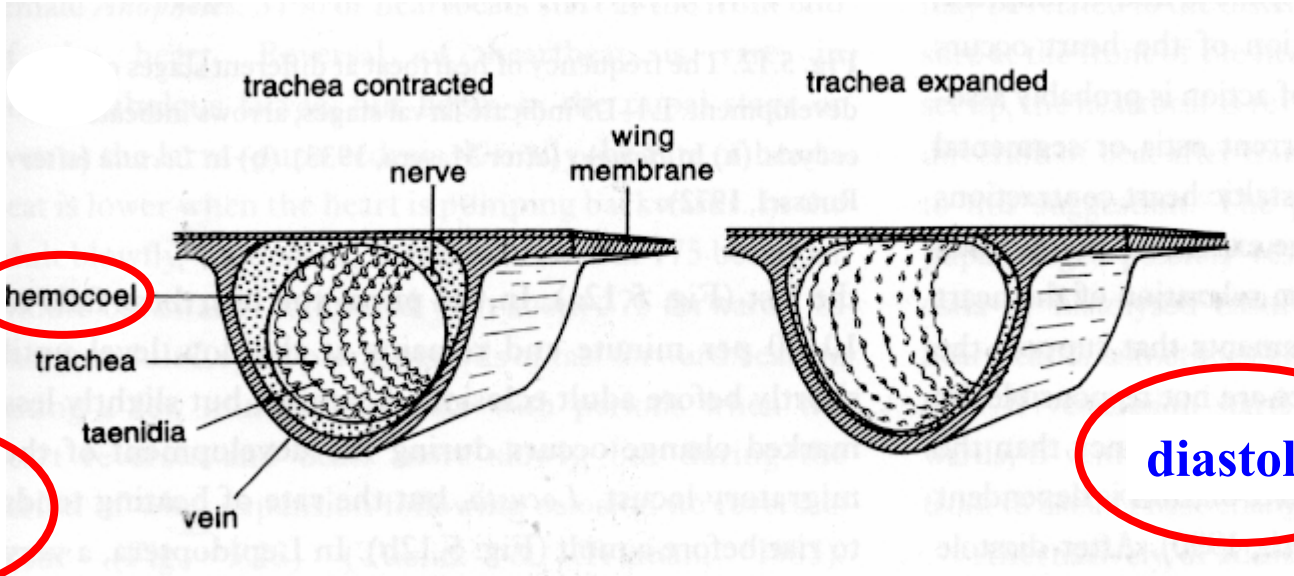
Je v křídlech hemolymfa?



Tok hemolymfy v různých částech těla můry *Attacus*

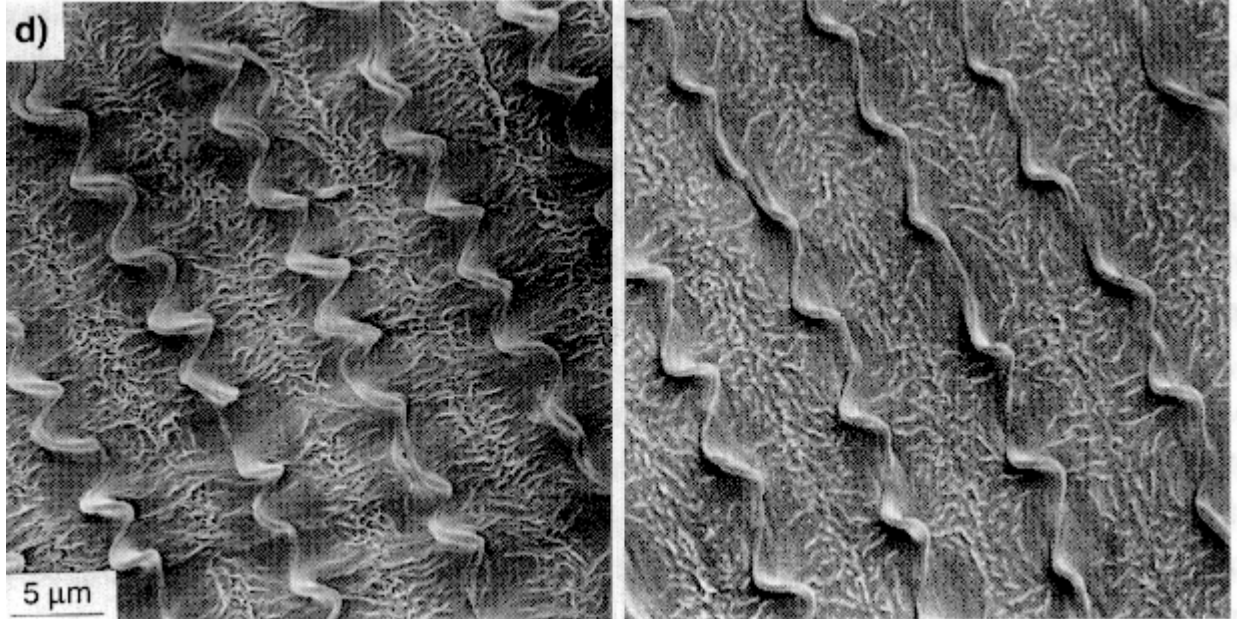


Slapový tok hemolymfy

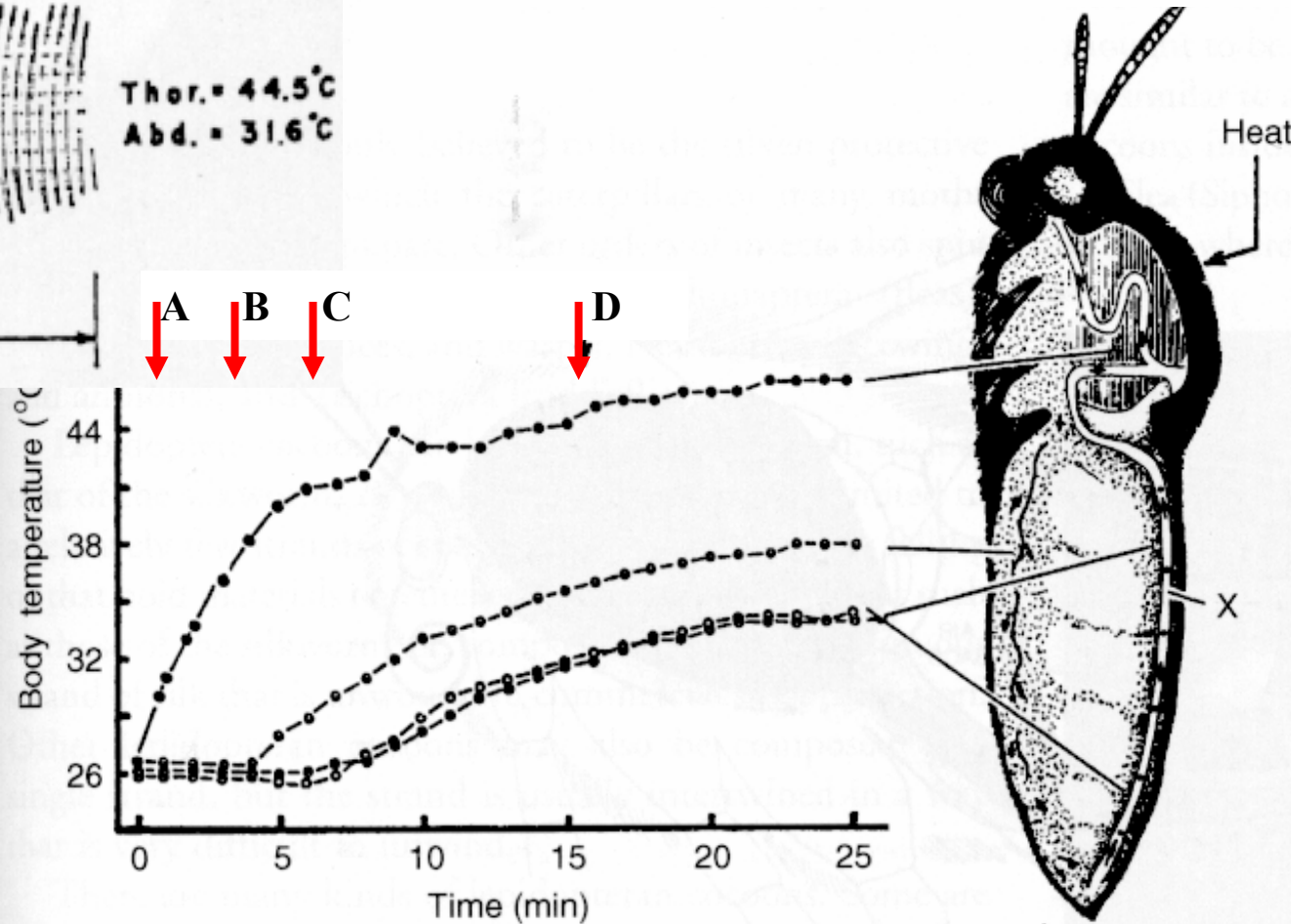
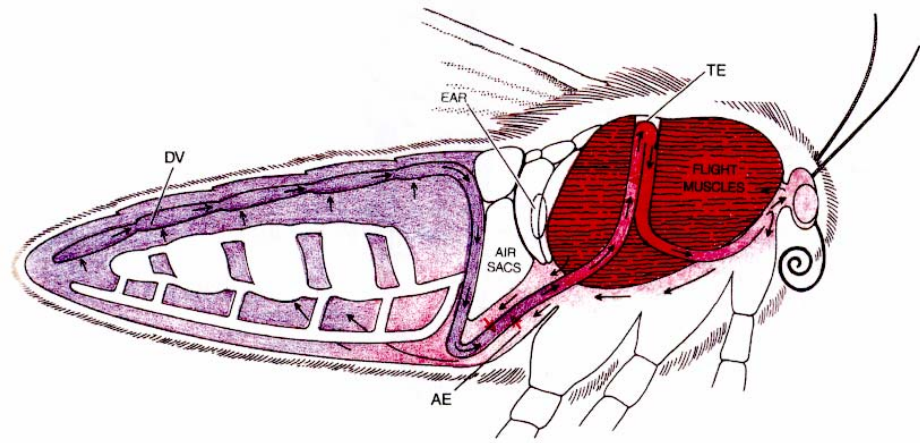
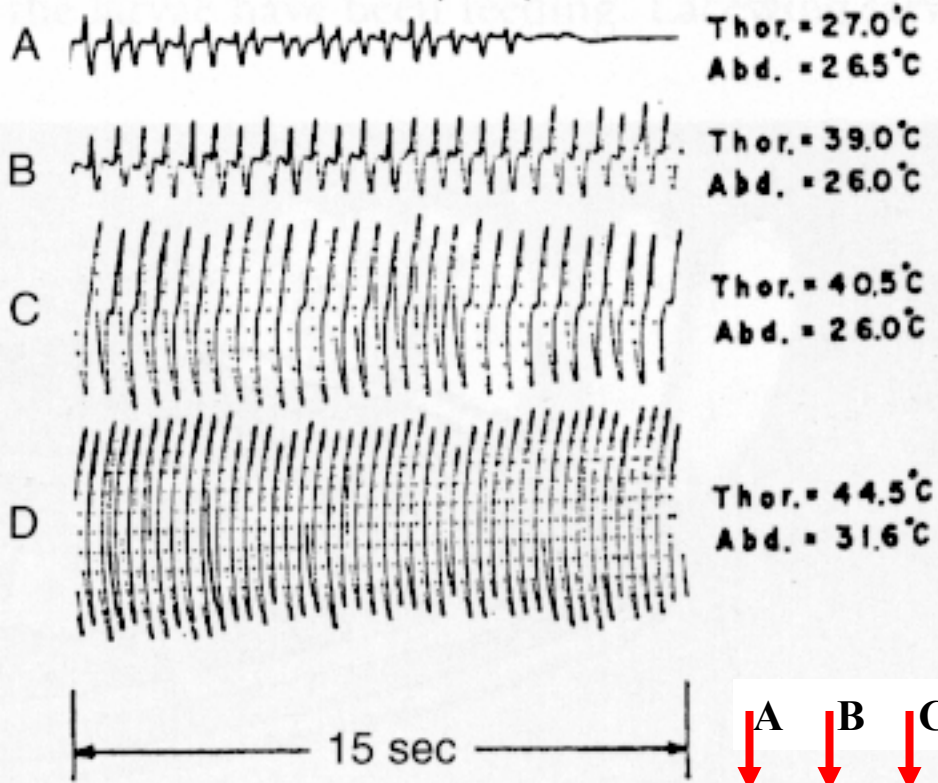


systola

diastola



Heartbeat (at X)



**Fyziologická
termoregulace a
cirkulační systém
X
Behaviorální
termoregulace**