

Základy entomologie

4. cvičení:

**Hrud'**

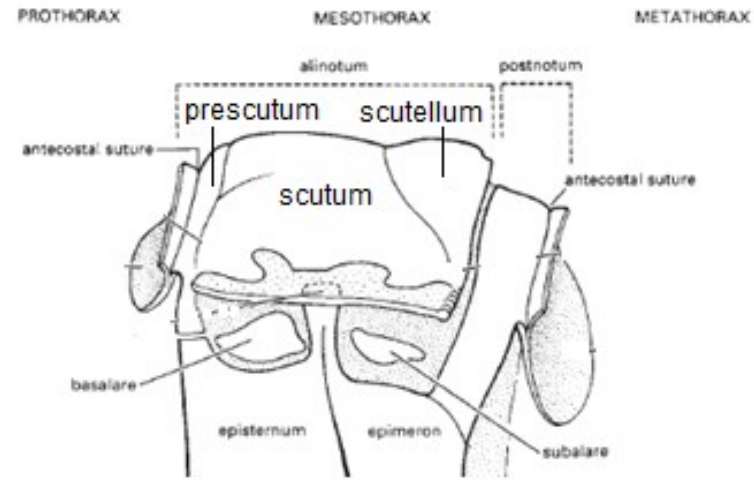
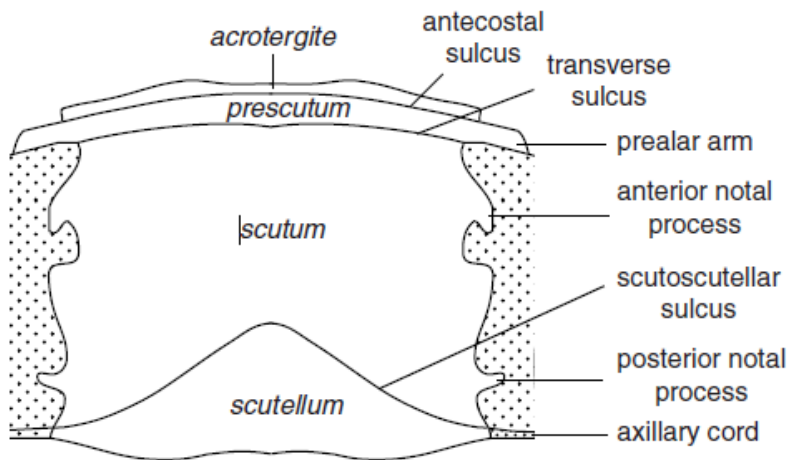
**Končetiny**

# Hrud' (Thorax)

↙ prothorax  
 ↘ mesothorax } u Pterygot allae  
 ↘ metathorax

- rozsáhlá sklerotizace – rozpad na sklerity: tergity, sternity, pleurity
- prothorax – redukován (alátní druhy), zesílený (štít u brouků)
- mesothorax – dobře vyvinutý u Diptera
- metathorax – dobře vyvinutý u Orthoptera

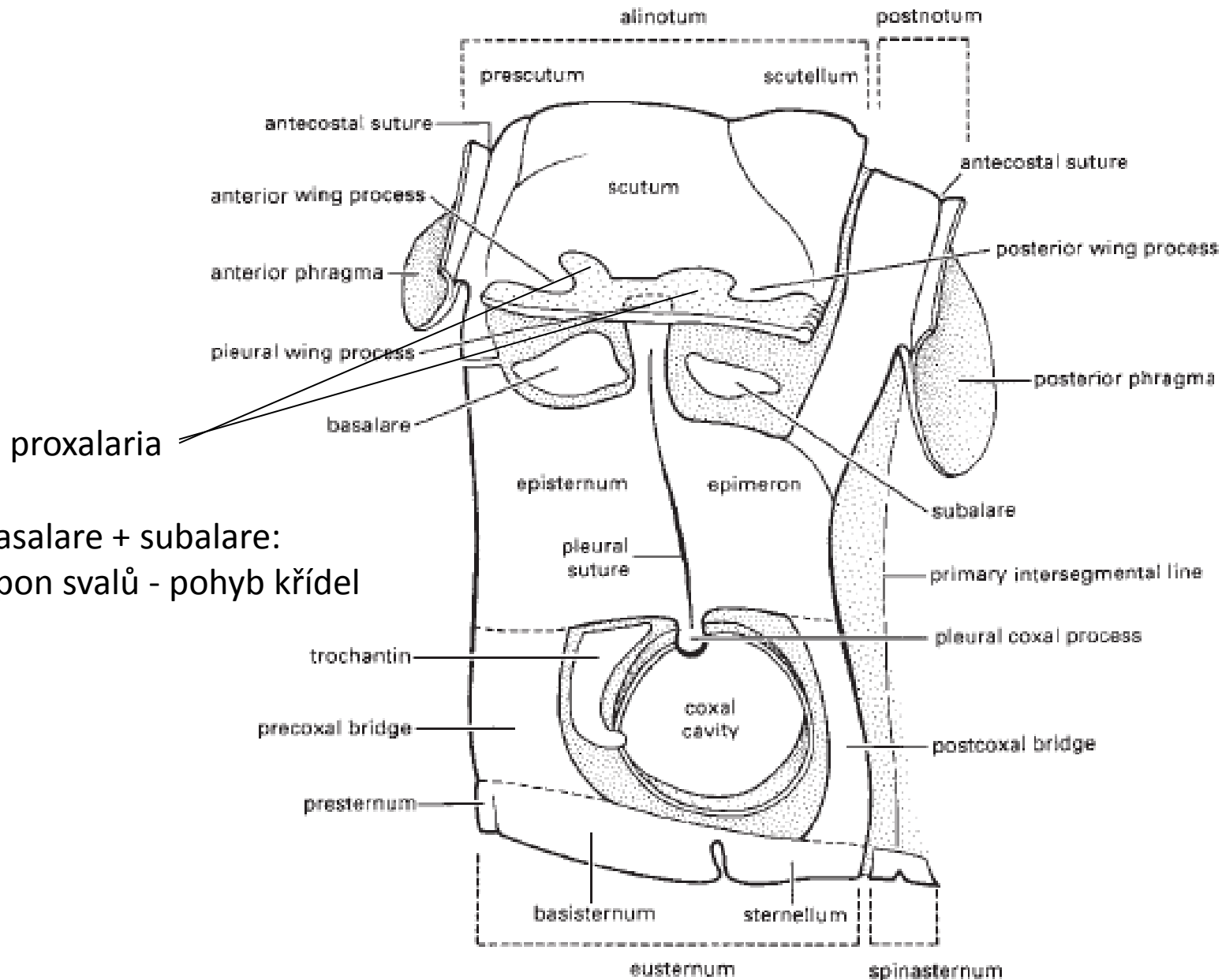
- **notum** = dorzální část terga
   
 ↙ prescutum } sutura mesoprescutellaris  
 ↘ scutum }  
 ↘ scutellum } sutura scutoscutellaris



PROTHORAX

MESOTHORAX

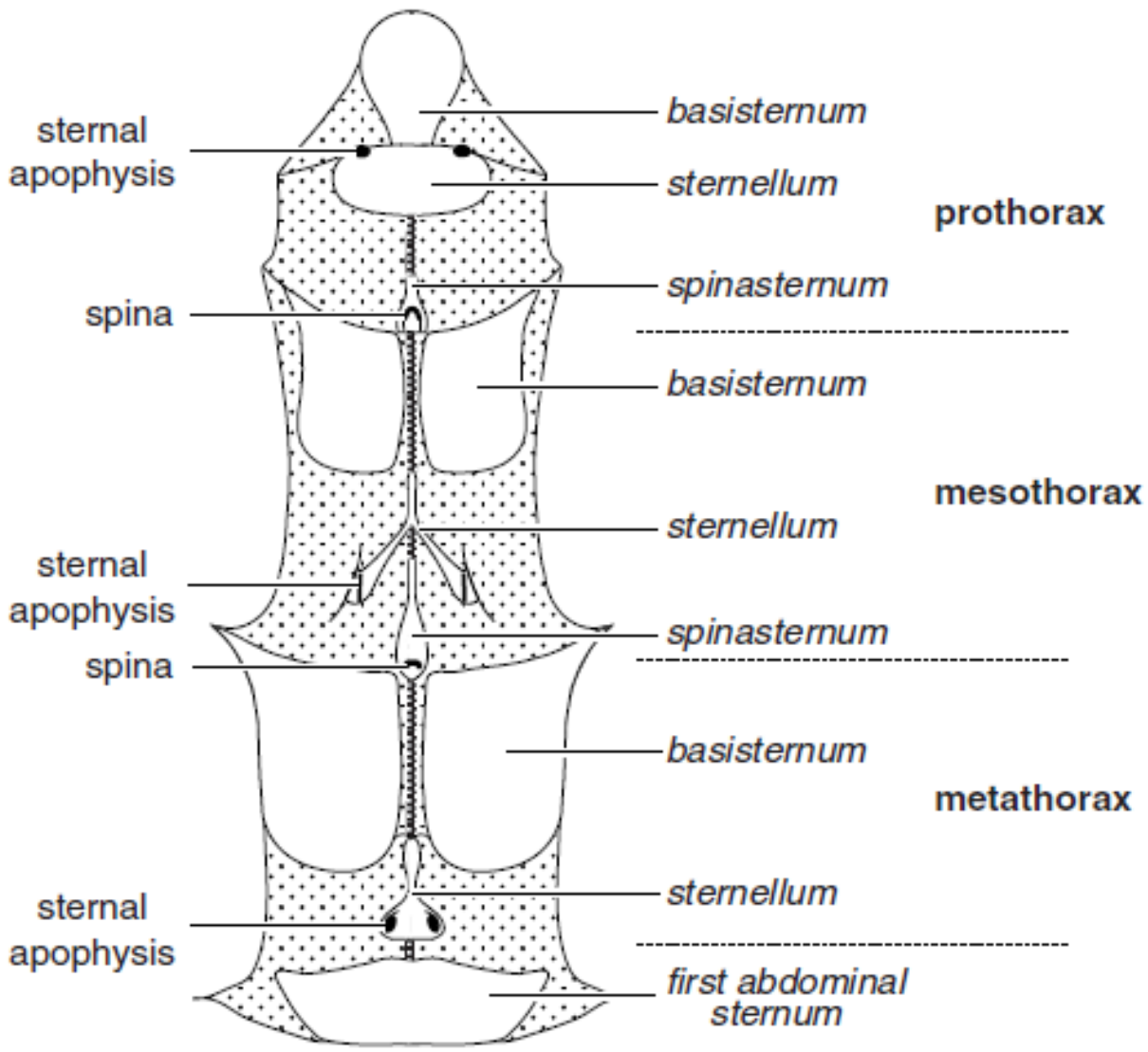
METATHORAX



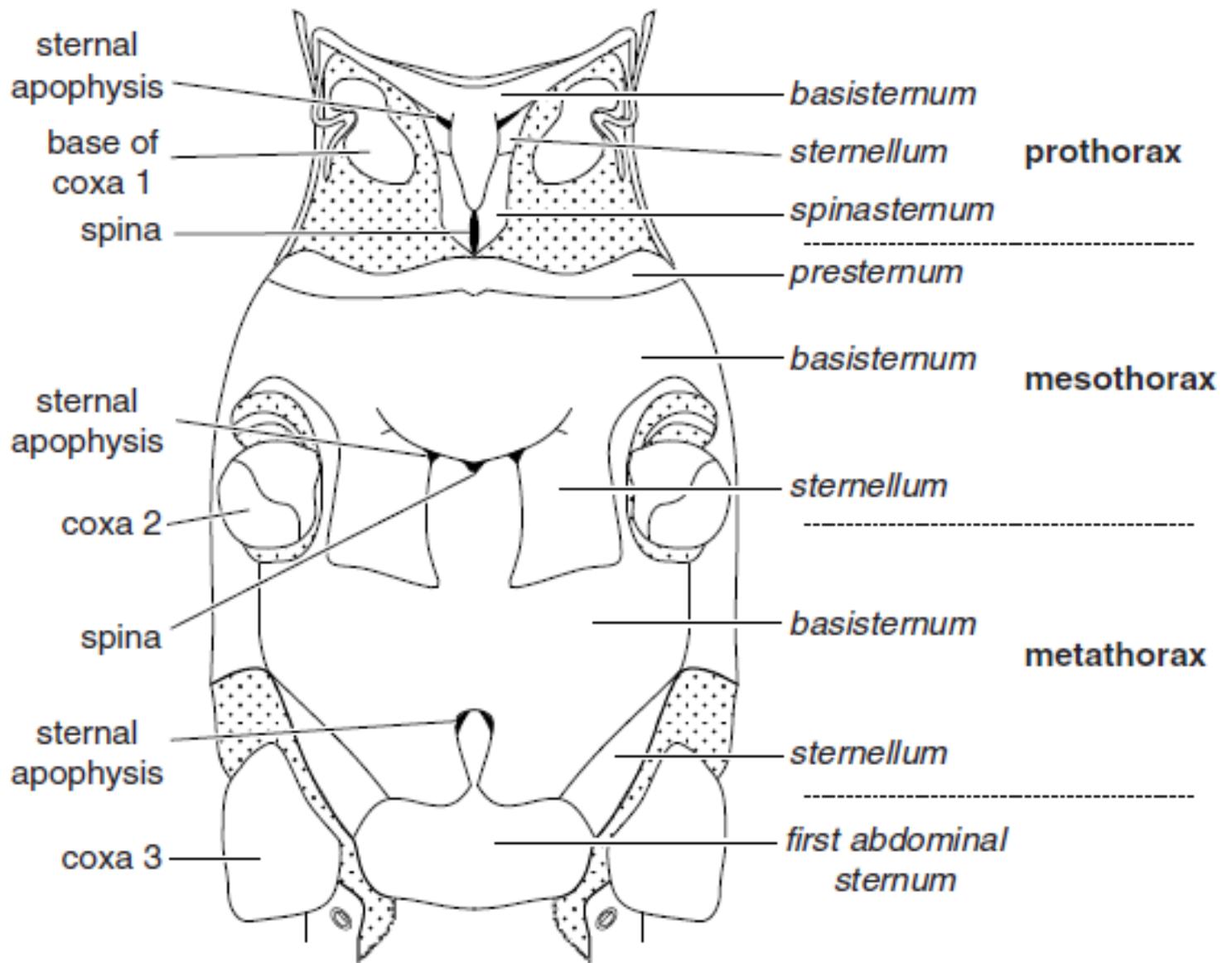
proxalaria

basalare + subalare:  
úpon svalů - pohyb křídel

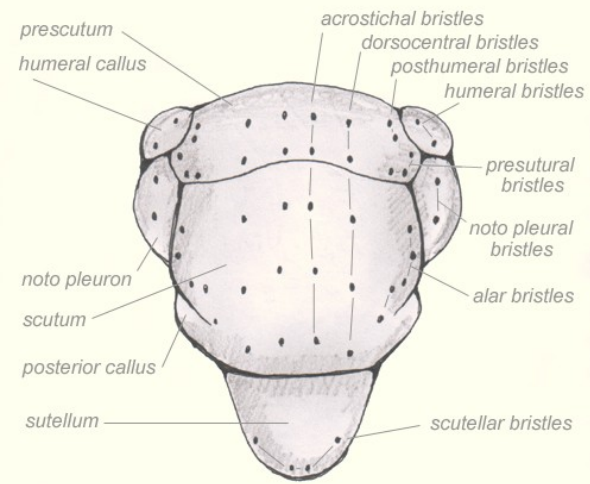
Sternum — basisternum  
 — sternellum  
 — spinasternum



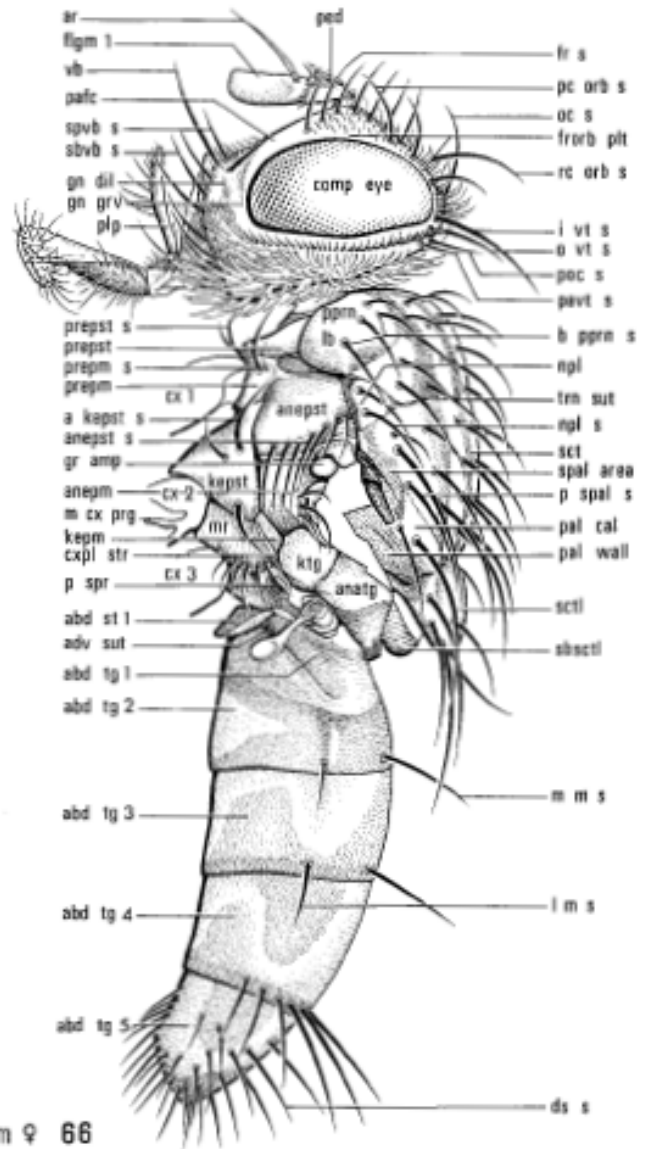
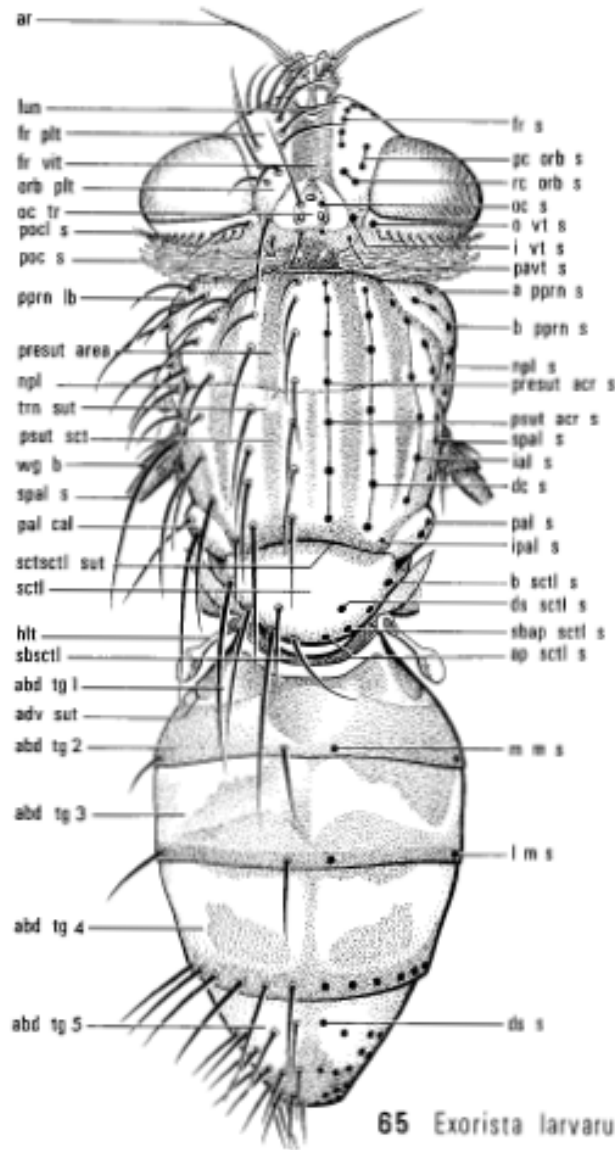
Ventrální pohled na hrud': případ s jasně oddělenými sklerity (šváb)



Ventrální pohled na hrud': případ se splynulou středo- a zadohrudí do pterothorakální destičky (saranče)



Body (dorsal) muscoidfly (Diptera)



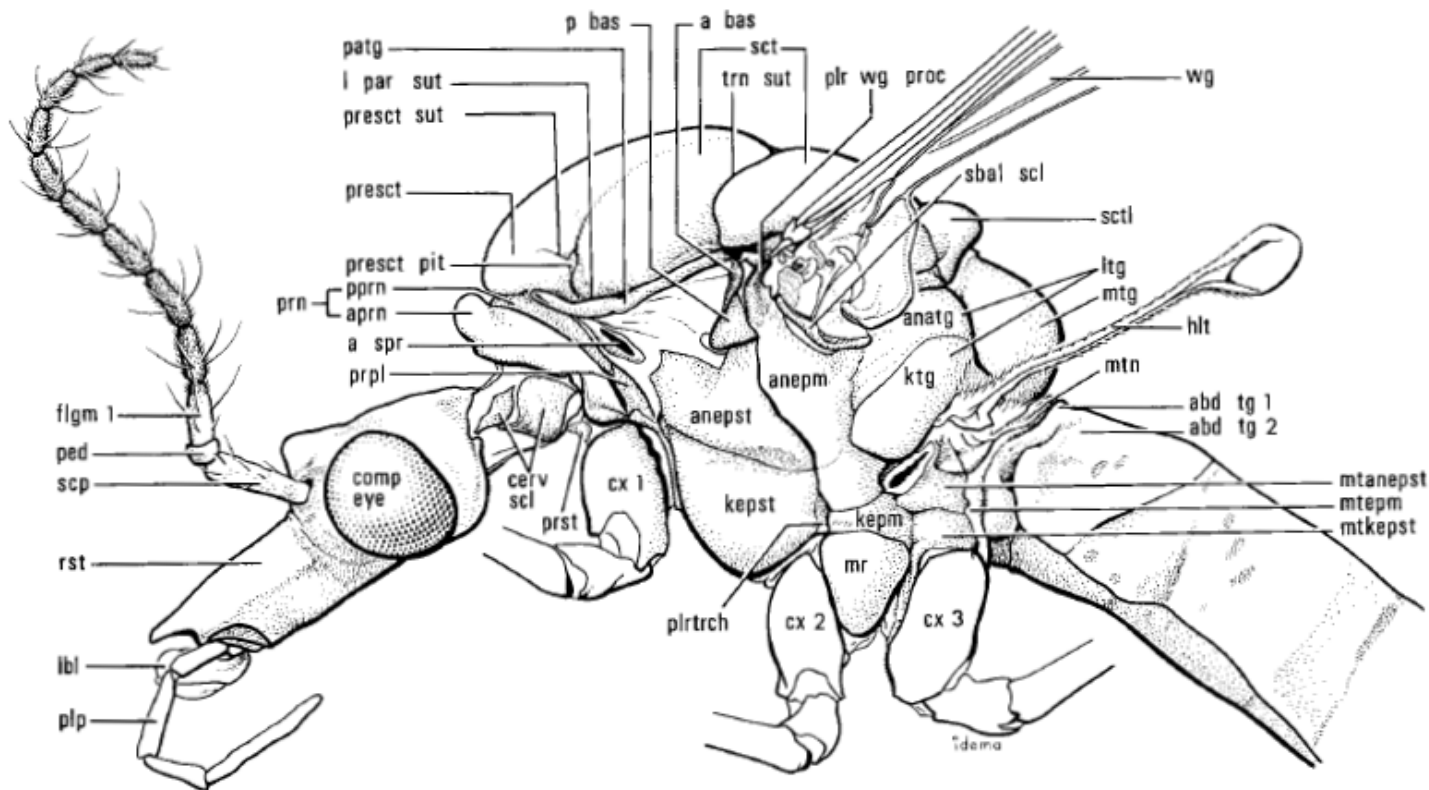
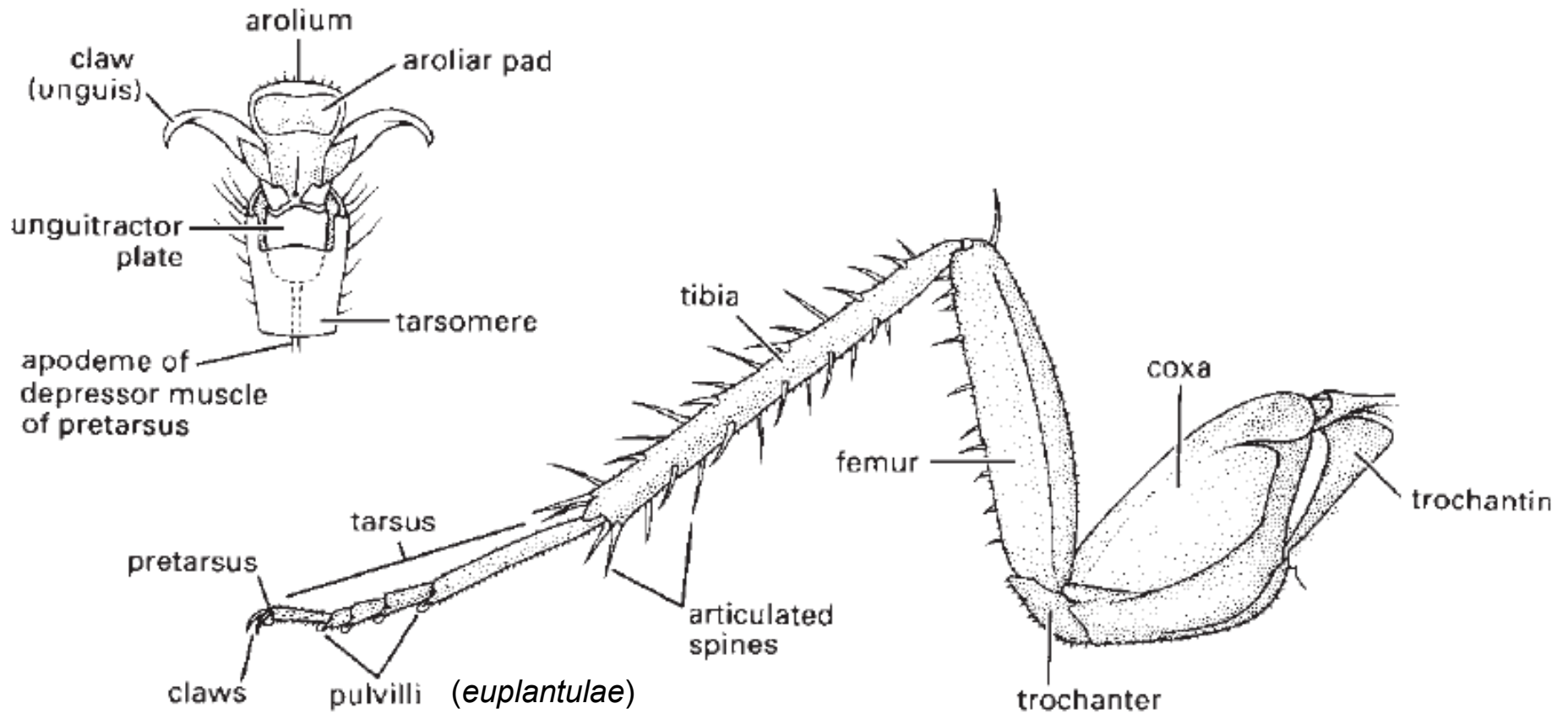


Fig. 2.64. Morphology and terminology of head and thorax of *Tipula trivittata* Say, lateral view.

a bas, anterior basalare  
 abd tg, abdominal tergite  
 anatg, anatergite  
 anepm, anepimeron  
 anepst, anepisternum  
 aprn, anteprototum  
 a spr, anterior spiracle  
 cerv scl, cervical sclerite  
 comp eye, compound eye  
 cx, coxa  
 flgm, flagellomere  
 hlt, halter  
 kepm, Katepimeron  
 kepst, Katepisternum  
 ktg, katatergite

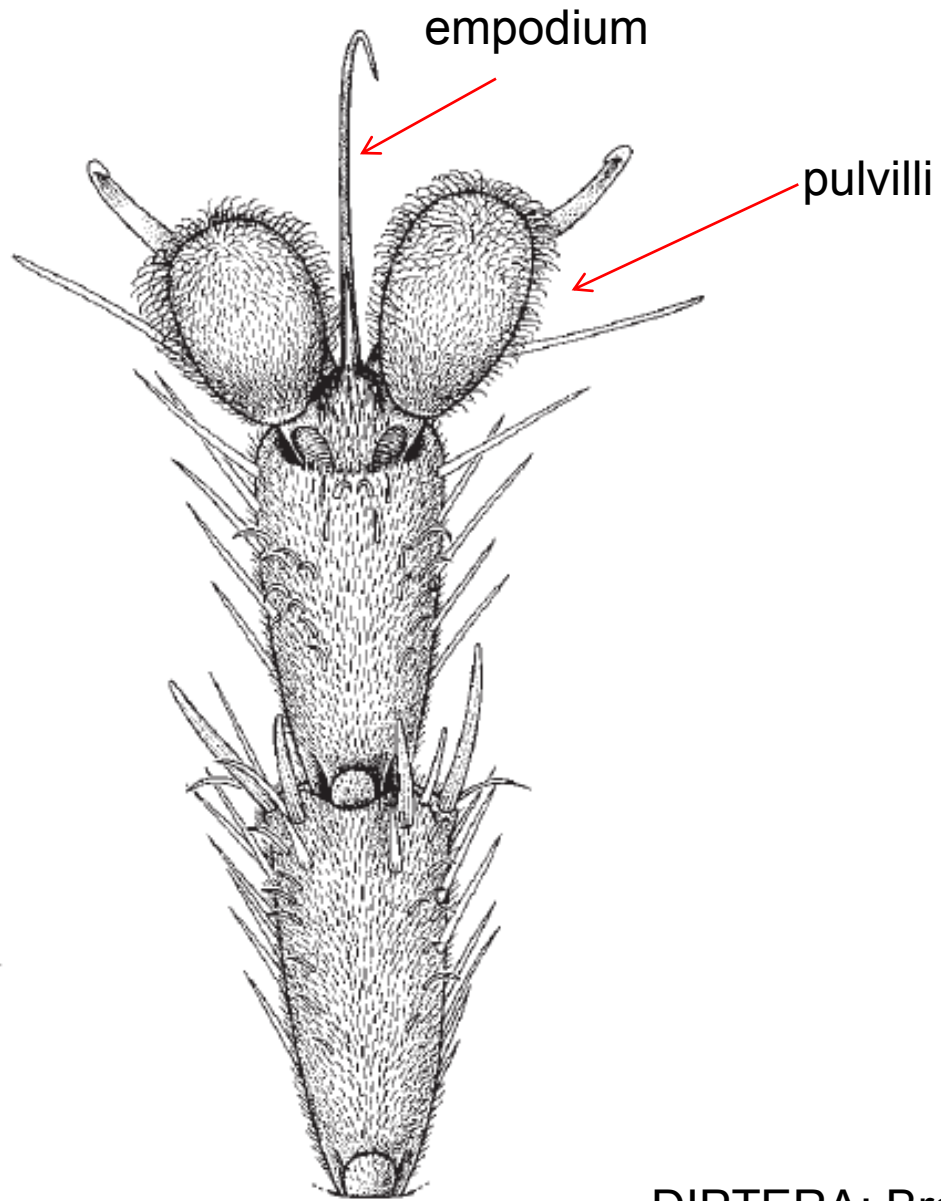
lbl, labellum  
 l par sut, lateral parapsidal suture  
 ltg, laterotergite  
 mr, meron  
 mtanepst, metanepisternum  
 mtepm, metepimeron  
 mtg, mediotergite  
 mtkepst, metakatepisternum  
 mtn, metanotum  
 patg, paratergite  
 p bas, posterior basalare  
 ped, pedicel  
 plp, palpus  
 pltrch, pleurotrochantin  
 plr wg proc, pleural wing process

pprn, postpronotum  
 presct, prescutum  
 presct pit, prescutal pit  
 presct sut, prescutal suture  
 prn, pronotum  
 prpl, propleuron  
 prst, prosternum  
 rst, rostrum  
 sbal scl, subalar sclerite  
 scp, scape  
 sct, scutum  
 sctl, scutellum  
 trn sut, transverse suture  
 wg, wing



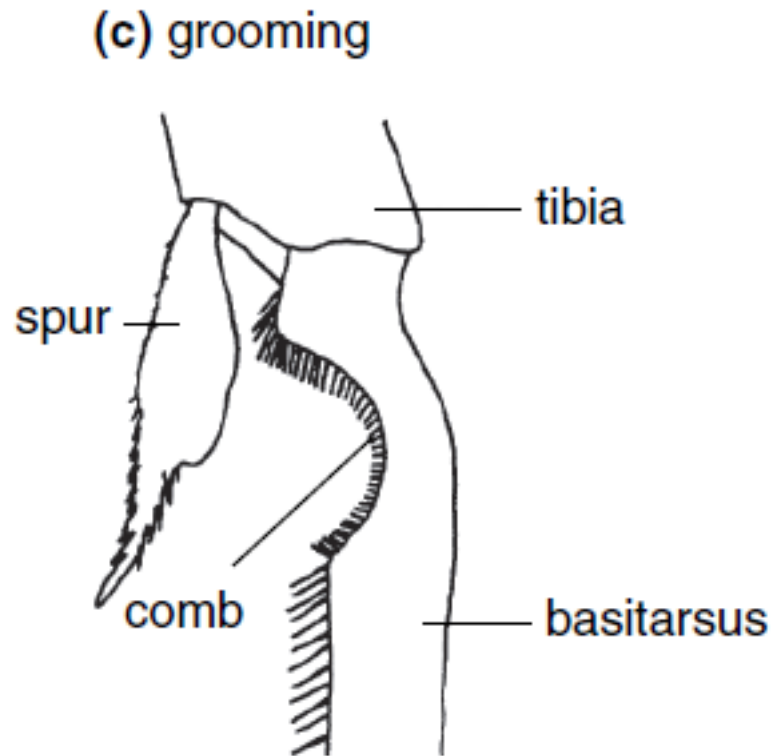
**Fig. 2.21** The hind leg of a cockroach, *Periplaneta americana* (Blattodea: Blattidae), with enlargement of ventral surface of pretarsus and last tarsomere. (After Cornwell 1968; enlargement after Snodgrass 1935.)





DIPTERA: Brachycera

# Čistící nohy

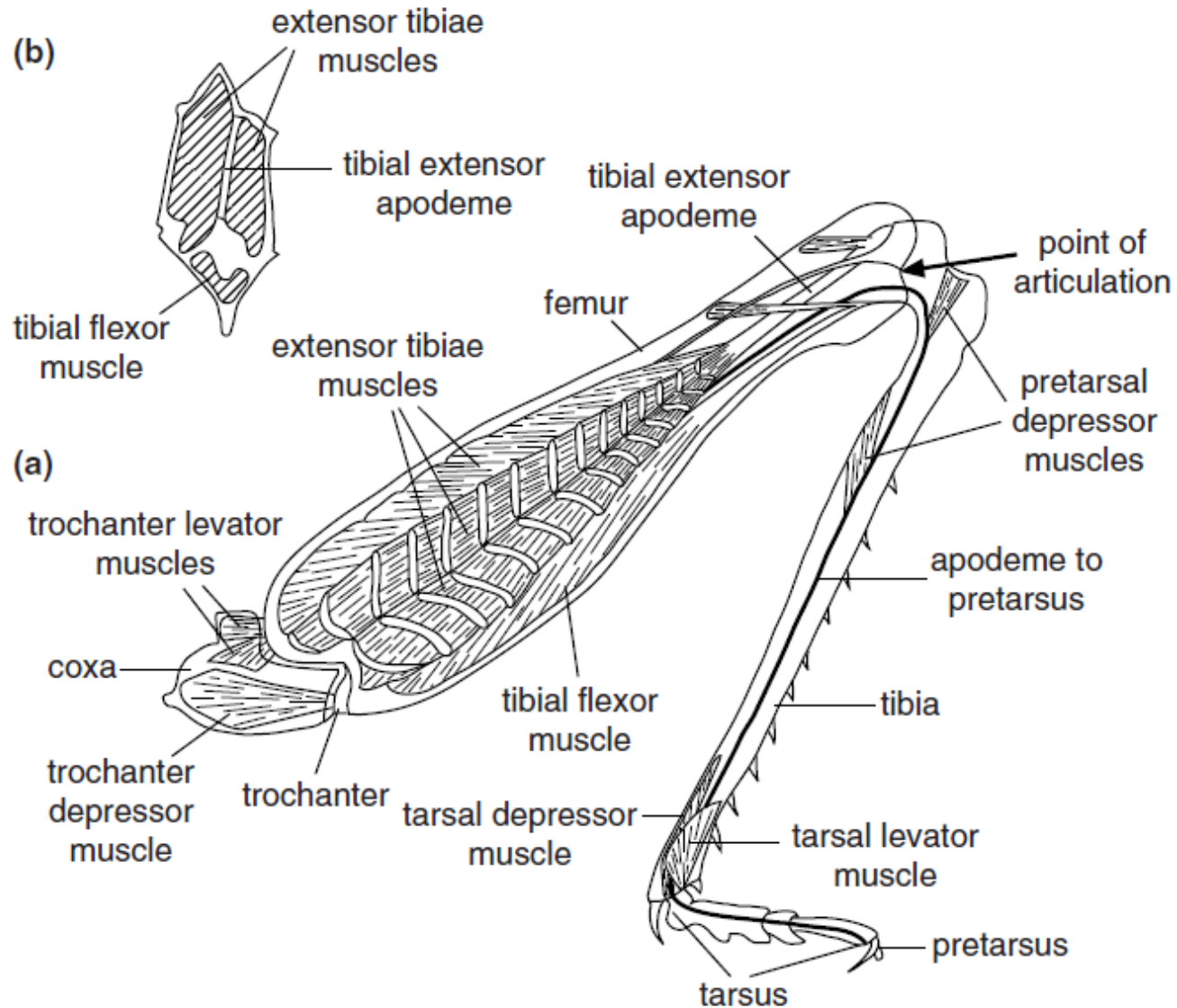


Hymenoptera: Mutilidae

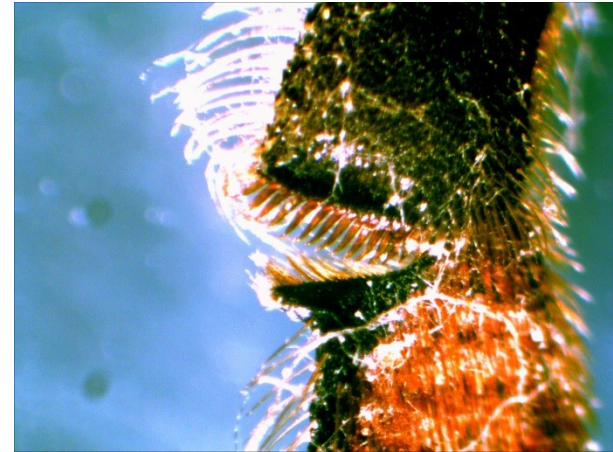
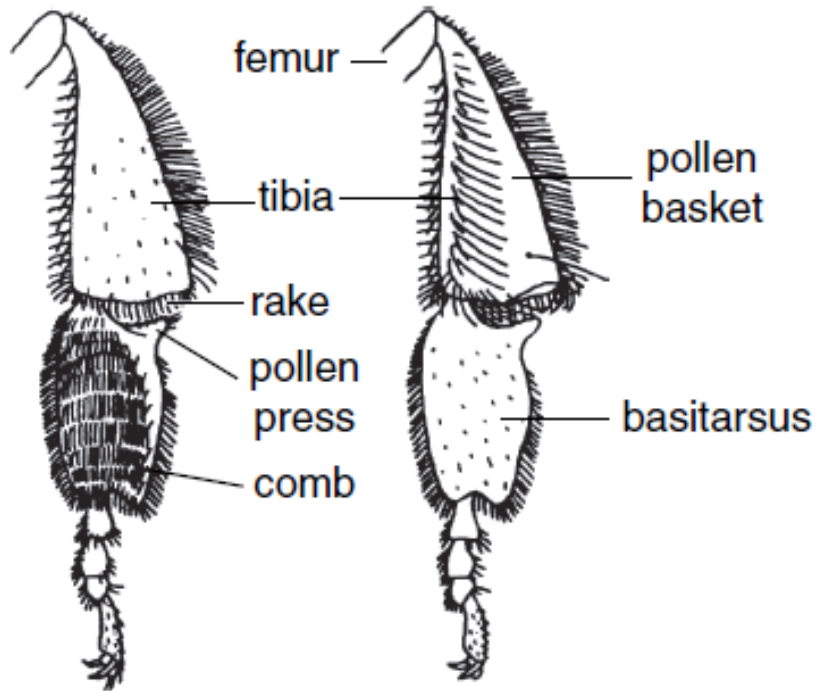


Coleoptera: Carabidae

# Skákavé končetiny (saranče)



# Sběrací končetiny





## Hrabavé končetiny



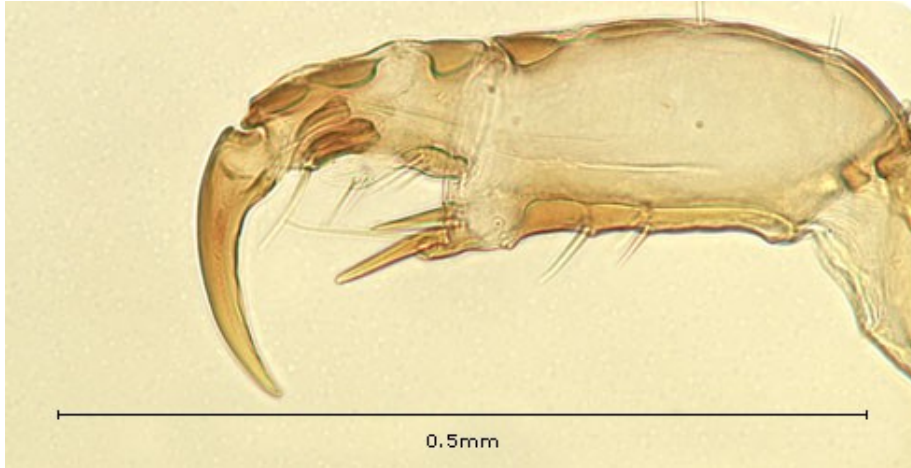
## Plovavé končetiny



# Loupeživé končetiny



## Záchytné končetiny



## Snovací končetiny



Snovatky (Embioptera)

