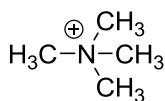
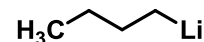
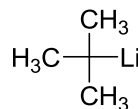
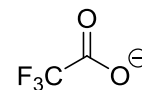
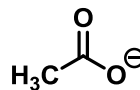
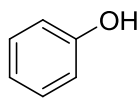
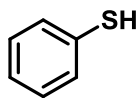
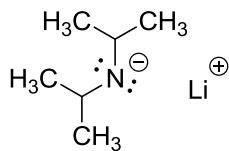
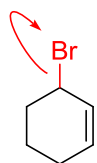


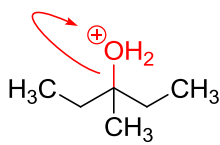
V uvedených dvojicích označte lepší nukleofil:



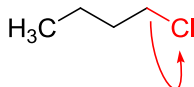
Který z uvedených substrátů je lepší spíše pro S<sub>N</sub>1 a který spíše pro S<sub>N</sub>2? Označte také odstupující skupiny:



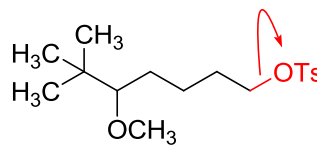
S<sub>N</sub>1



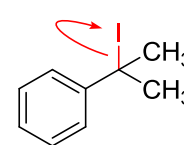
S<sub>N</sub>1



S<sub>N</sub>2

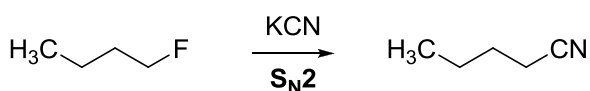


S<sub>N</sub>2

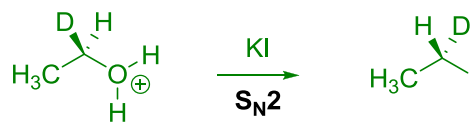
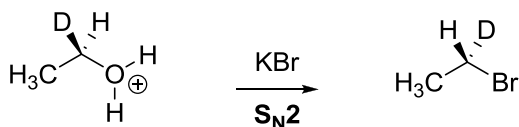


S<sub>N</sub>1

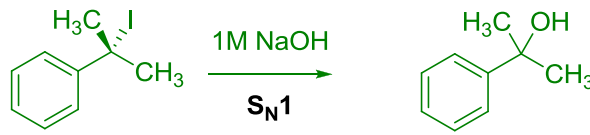
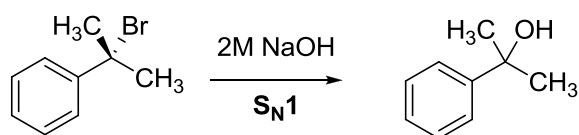
Doplňte produkty, včetně stereochemie (kde to má smysl). Rozhodněte, zda se jedná o S<sub>N</sub>1 nebo S<sub>N</sub>2 reakci. Vyberte, která z každé dvojice reakcí bude probíhat rychleji.



lepší odstupující skupina

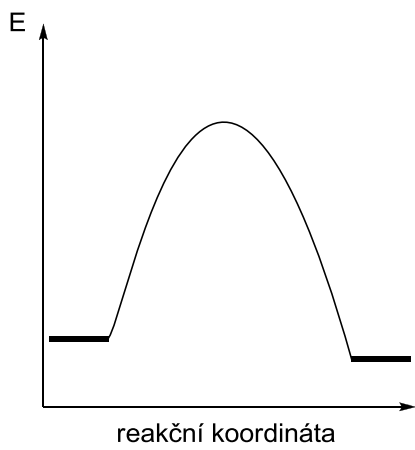


lepší nukleofil

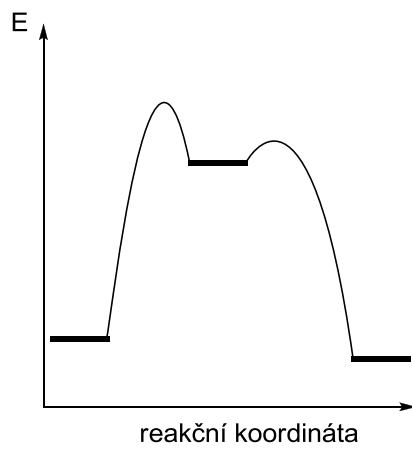


lepší odstupující skupina

Který graf popisuje průběh reakce  $S_N1$  a který  $S_N2$ ?



$S_N2$



$S_N1$