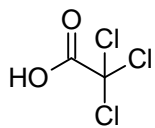
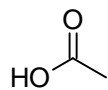
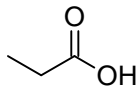
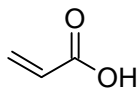


Z dvojíc vyberte kyslejšíu zlúčeninu:

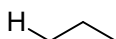
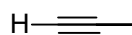
1.



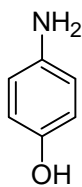
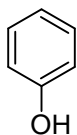
2.



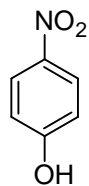
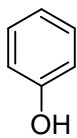
3.



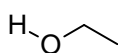
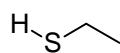
4.



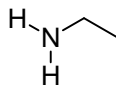
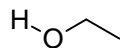
5.



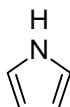
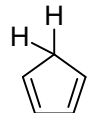
6.



7.

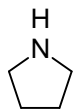
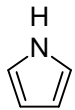


8.



Z dvojíc vyberte bázeckejšiu zlúčeninu:

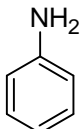
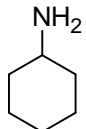
1.



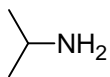
2.



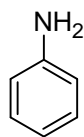
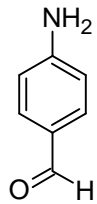
3.



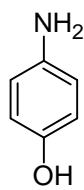
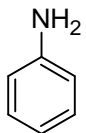
4.



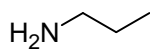
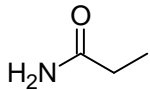
5.



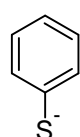
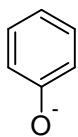
6.



7.

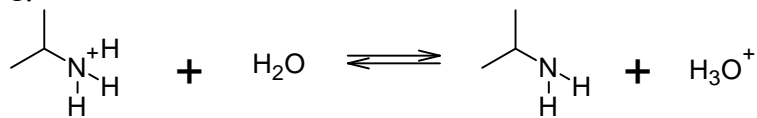


8.

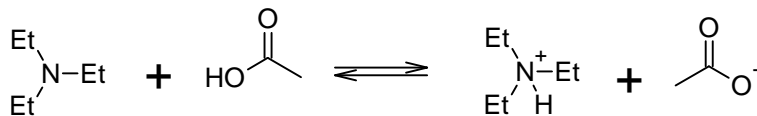


Šípkami naznačte posun acidobázickej rovnováhy (zároveň si všimnite, že sa zachováva celkový náboj na oboch stranách rovnováhy):

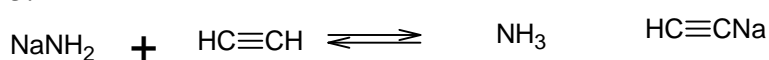
1.



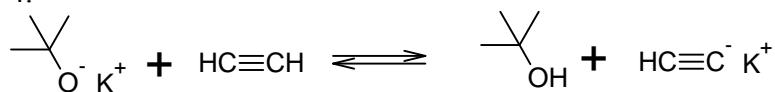
2.



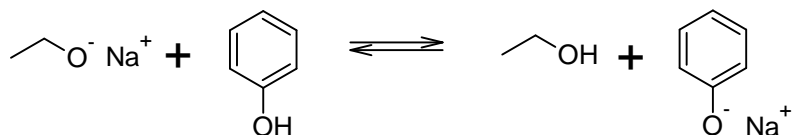
3.



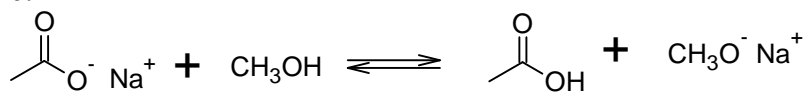
4.



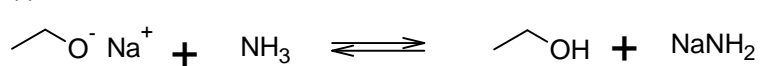
5.



6.



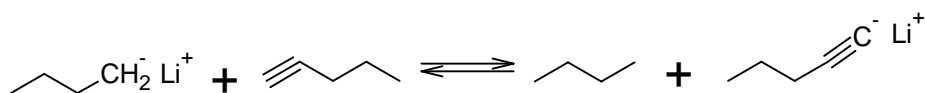
7.



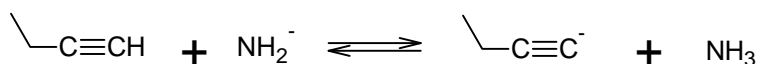
8.



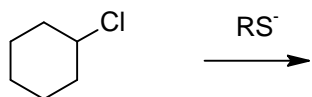
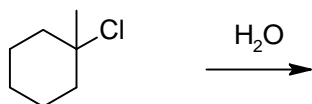
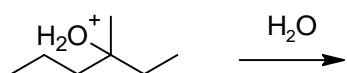
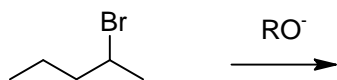
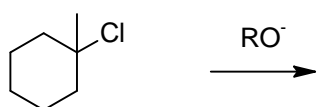
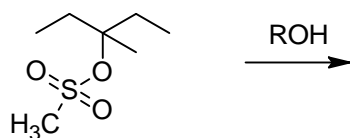
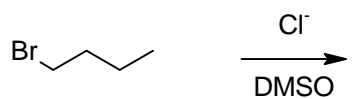
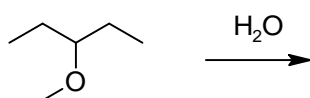
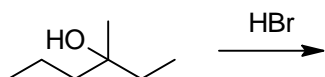
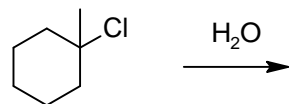
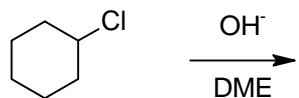
9.

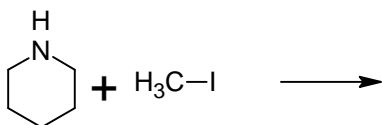
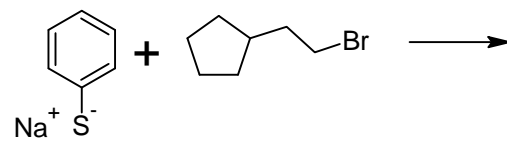
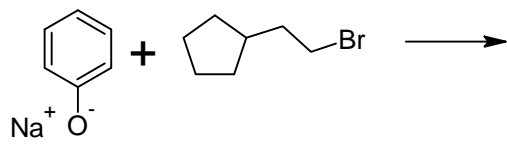
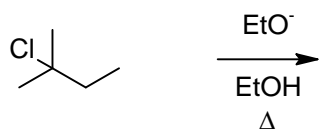
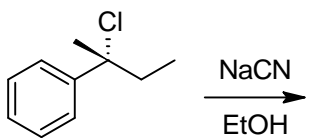
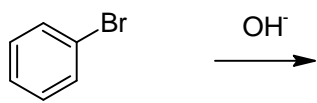
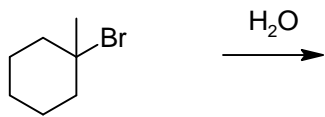
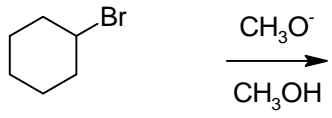
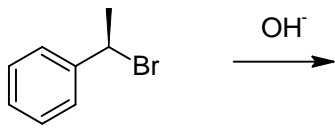


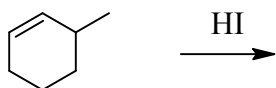
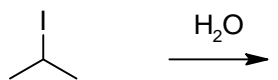
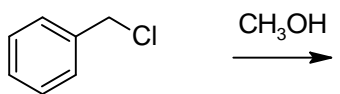
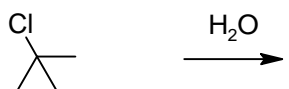
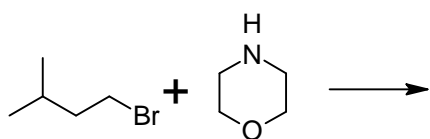
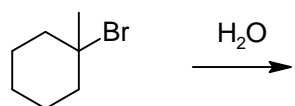
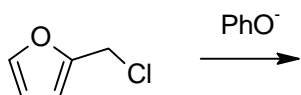
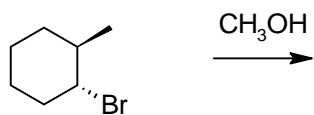
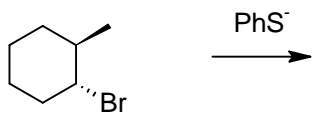
10. Bonusová otázka: Bol by ethanol vhodným rozpúšťadlom pre nasledujúcu deprotonáciu? Vysvetlite.

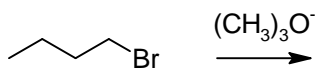
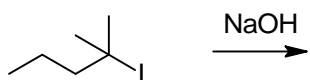
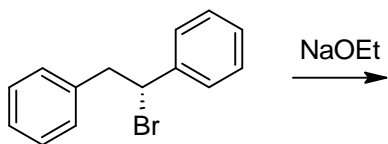
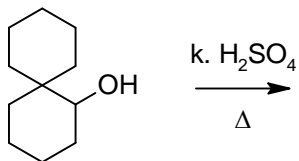
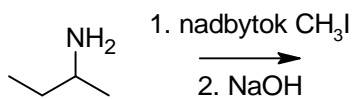
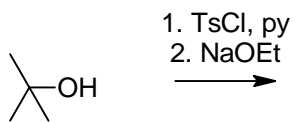
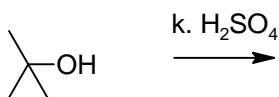
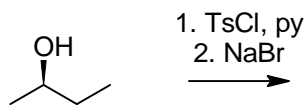
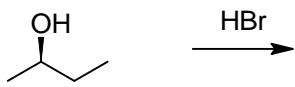
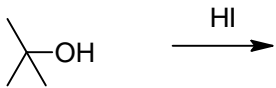


Aký hlavný produkt očakávate v uvedených reakciách?

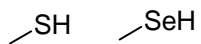
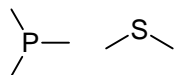
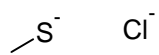
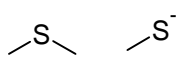




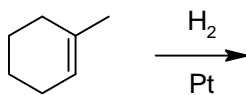
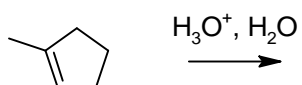
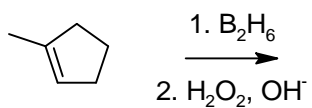
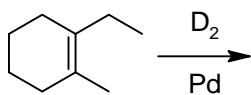
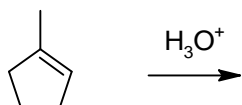
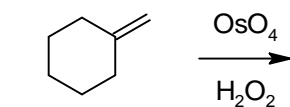
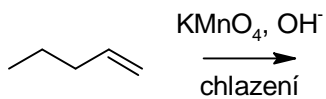
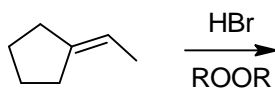
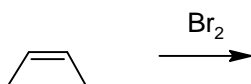
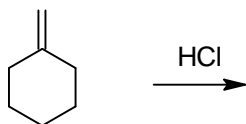
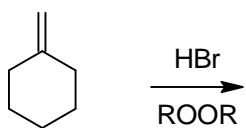
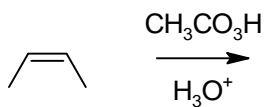
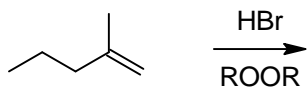
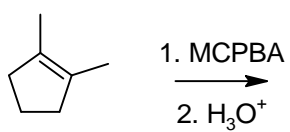




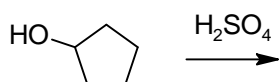
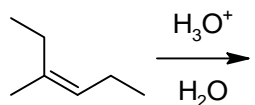
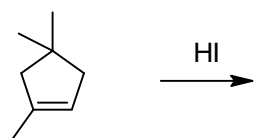
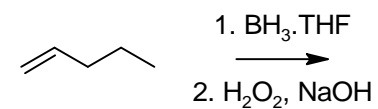
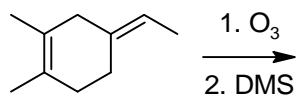
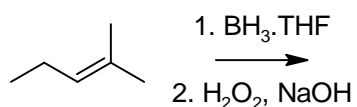
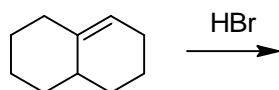
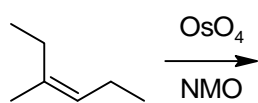
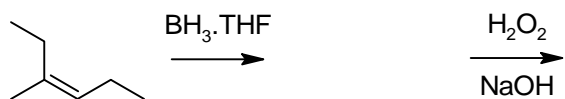
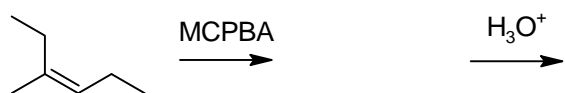
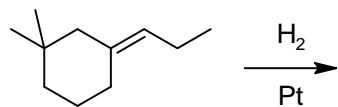
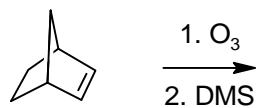
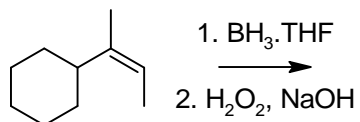
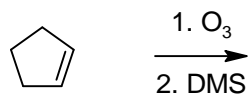
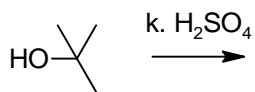
Z vybraných dvojic zakružkujte lepší nukleofil:

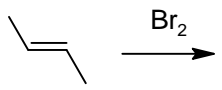
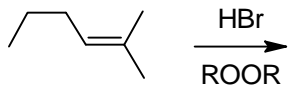
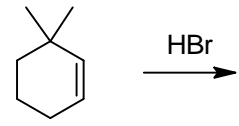
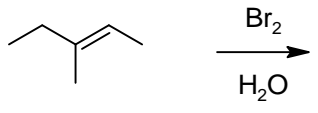
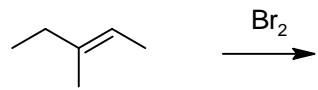
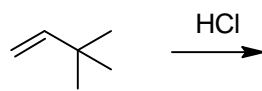


Nakreslite produkt(y):









Ako by ste previedli nasledujúce reakcie?

