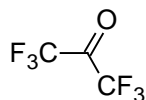
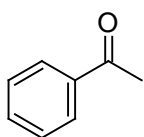
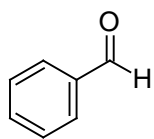
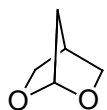
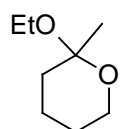
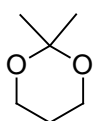


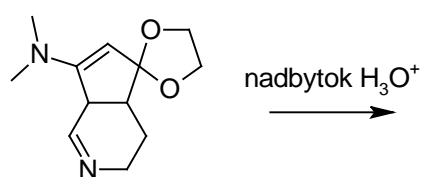
Ktorá zlúčenina bude reagovať rýchlejšie s Nu<sup>-</sup>?



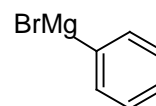
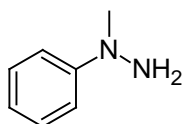
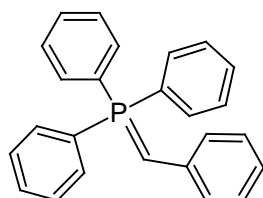
Aké reagenty by ste použili v kysle katalyzovanej hydrolýze?



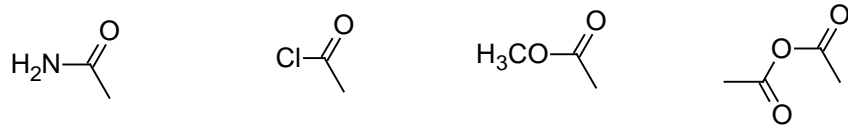
Čo vznikne kysle katalyzovanou hydrolýzou?



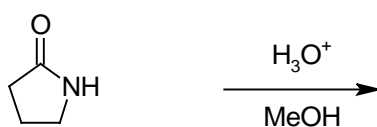
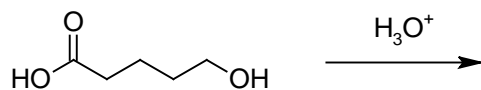
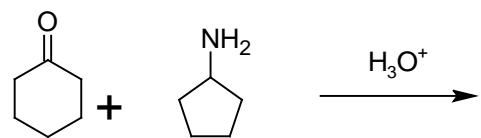
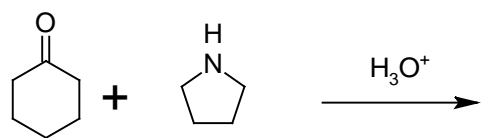
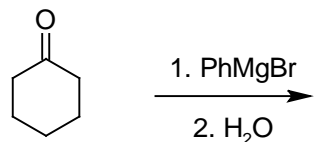
Označte, ktorá časť molekuly sa bude nukleofilne adovať na uhlík karbonylovej skupiny:



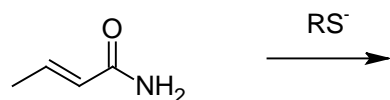
Zorad'te podľa reaktivity voči nukleofilom atakujúcim uhlík karbonylovej skupiny:



Nakreslite produkty reakcií:



Nakreslite produkty adície:



Nakreslite Michaelov donor a Michaelov akceptor.