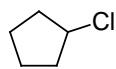
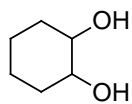


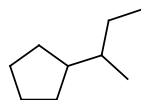
1 U nasledujúcich zlúčenín označte chirálne centrá.



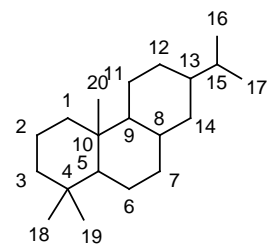
1



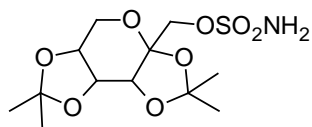
2



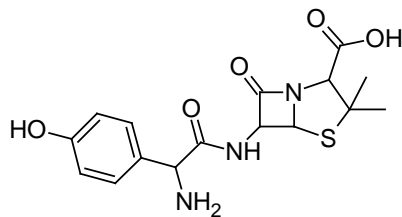
3



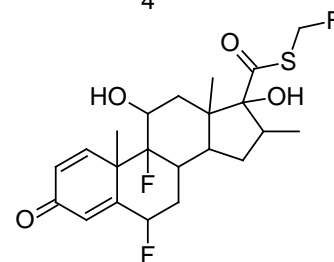
4



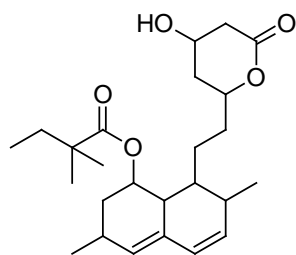
5



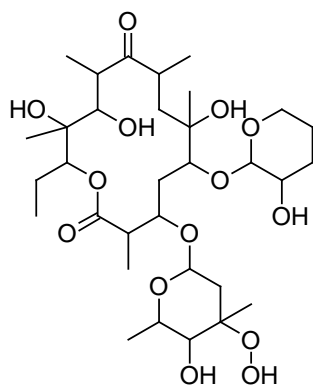
6



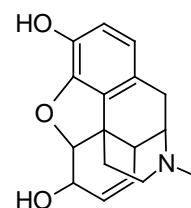
7



8

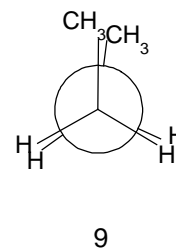
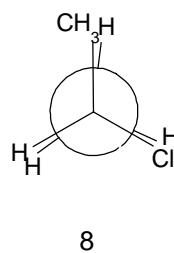
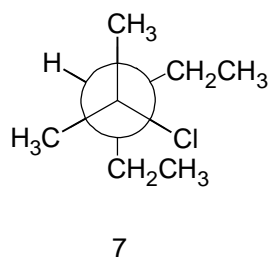
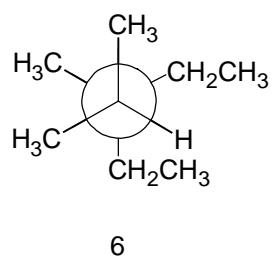
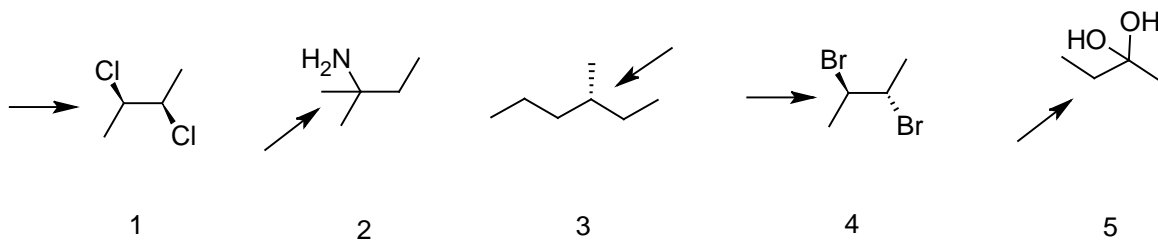


9

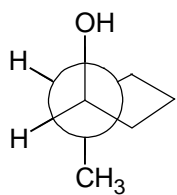


10

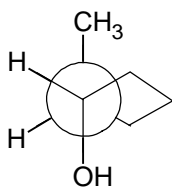
2 Nakreslite Newmanovu projekciu z uhlu pohľadu definovanom šípkou, prípadne prekreslite z Newmanovej projekcie do klasickej štruktúry (tzv. cik-cak projekcia väzieb).



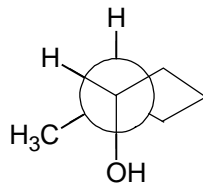
3 Prekreslite z Newmanovej projekcie do príslušného konformeru a vyjadrite vzťah medzi štruktúrami 1 a 2-5, 6 a 7-11.



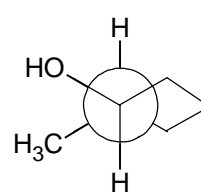
1



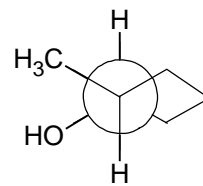
2



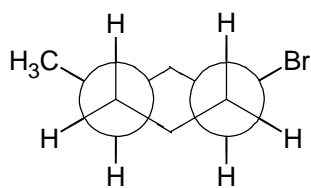
3



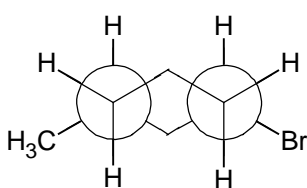
4



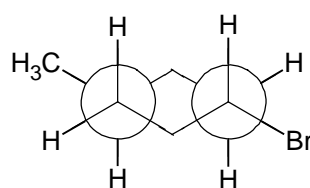
5



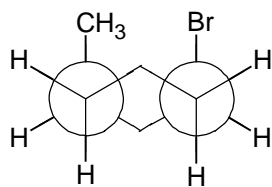
6



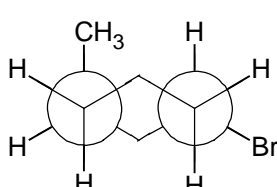
7



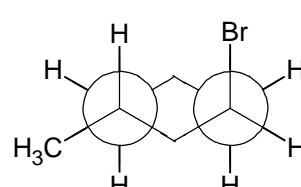
8



9



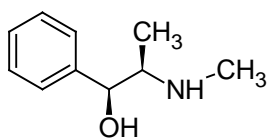
10



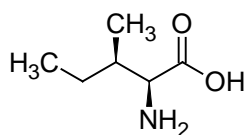
11

4 Molekuly 1-4 nakreslite v perspektívnej, Newmanovej a Fischerovej projekcii, molekuly 5-15 pomenujte.

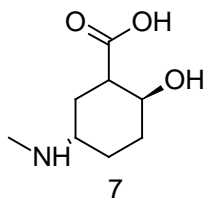
1. (R)-2-chlorpentan
2. (3R,4S)-dibromheptan
3. (R)-1-chlor-2-brompropan
4. (3R,4R)-4-methyl-hexen-3-thiol



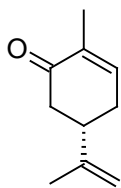
5



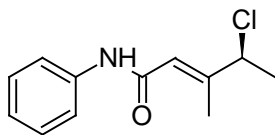
6



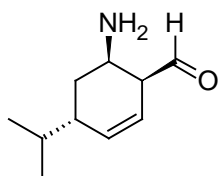
7



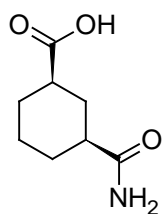
8



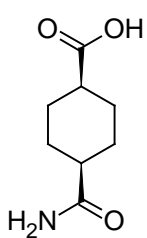
9



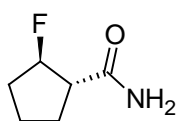
10



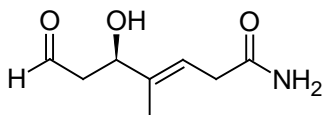
11



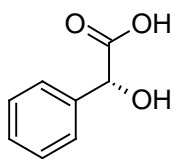
12



13

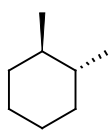


14

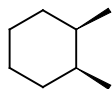


15

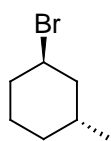
5 Nakreslite obe židličkové konformácie



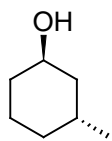
1



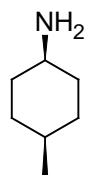
2



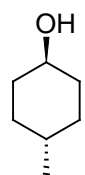
3



4

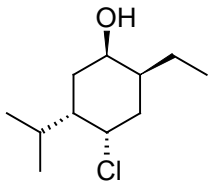


5

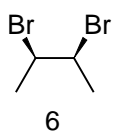
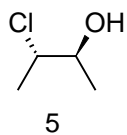
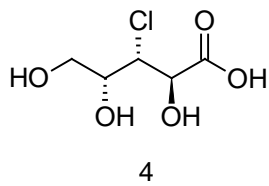
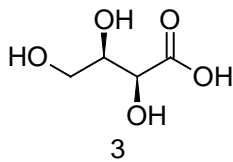
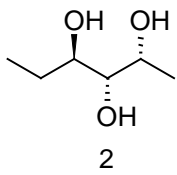
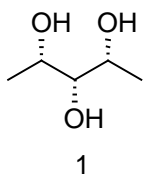


6

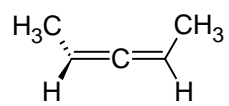
6 Nakreslite obe židličkové konformácie a určite, ktorá bude stabilnejšia.



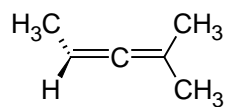
7 Prekreslite do Fischerovej projekcie.



8 Pokúste sa vysvetliť, či budú uvedené látky chirálne a svoju odpoveď zdôvodnite. Nakoniec molekuly pomenujte.



a



b