

Horninotvorné minerály

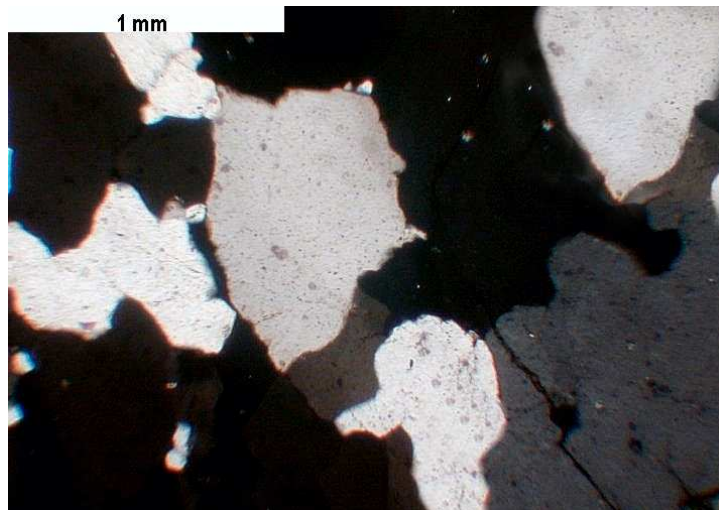
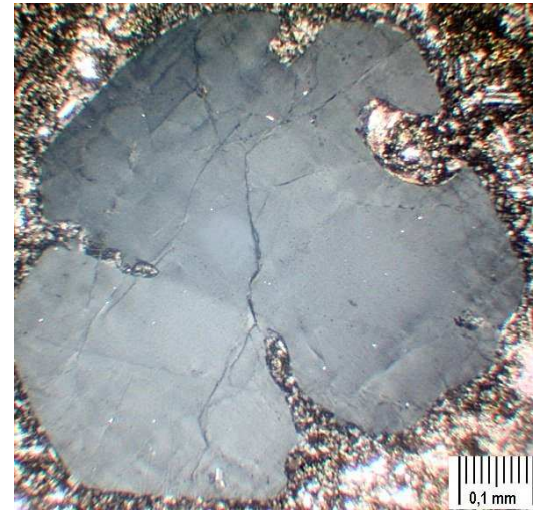
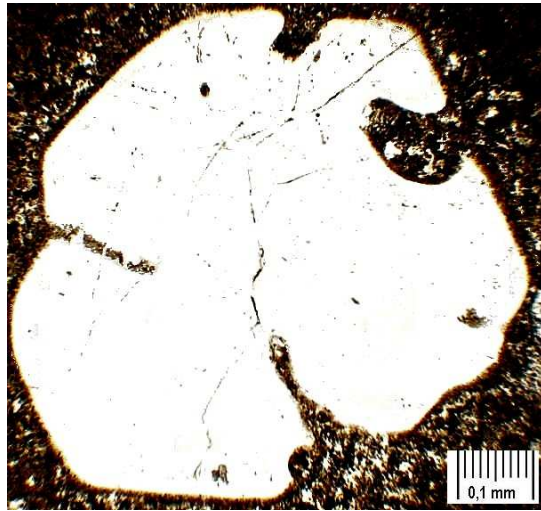
- ***Světlé minerály*** jsou minerály neobsahující v podstatném množství Mg, Fe, a Ti; např. křemen, živce, foidy, kalcit, apatit, muskovit.
- ***Tmavé minerály (mafity)*** jsou ty, které obsahují podstatné množství Fe, Mg, Mn apod.; např. olivín, pyroxeny, amfiboly, biotit, běžné granáty, melilit, ilmenit, magnetit apod.
- ***Index tmavosti (barevnosti)*** – color index = celkový obsah mafických minerálů (v objem. %) v dané hornině (např. hornina obsahující 10% amfibolu, 5% pyroxenu a 12% biotitu má index tmavosti 27).

Horninotvorné minerály

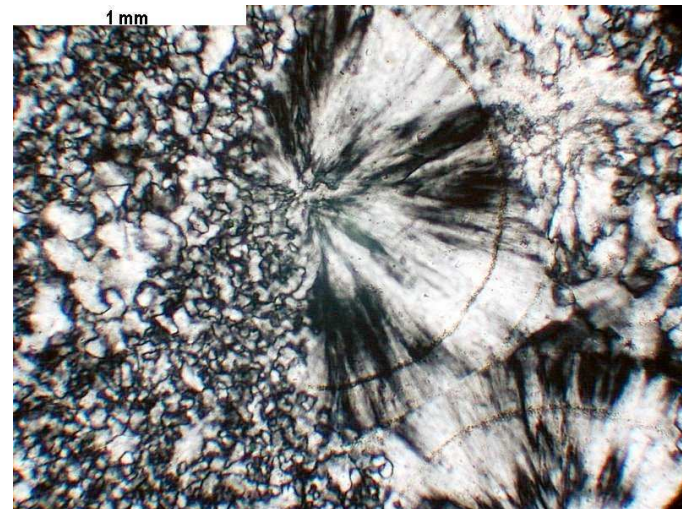
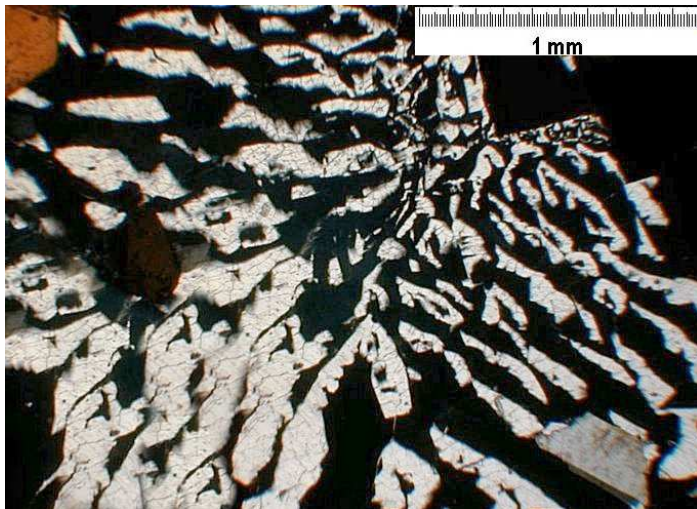
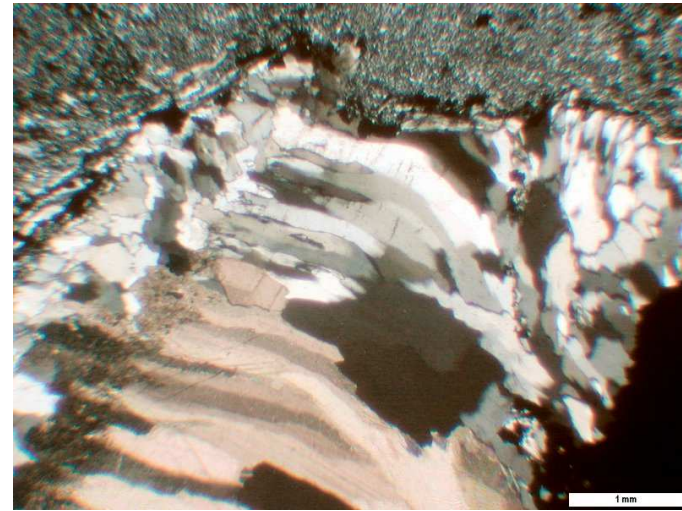
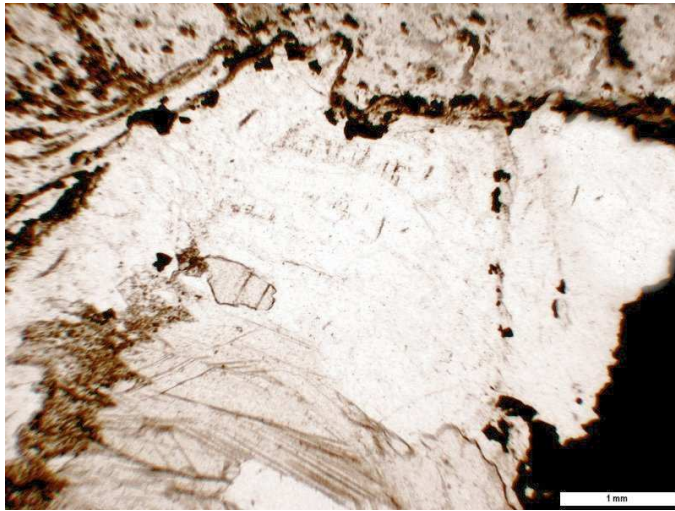
- ***Světlé kvantifikátory***
- ***Tmavé kvantifikátory***
- Minerály kvalifikátory

Viz texty

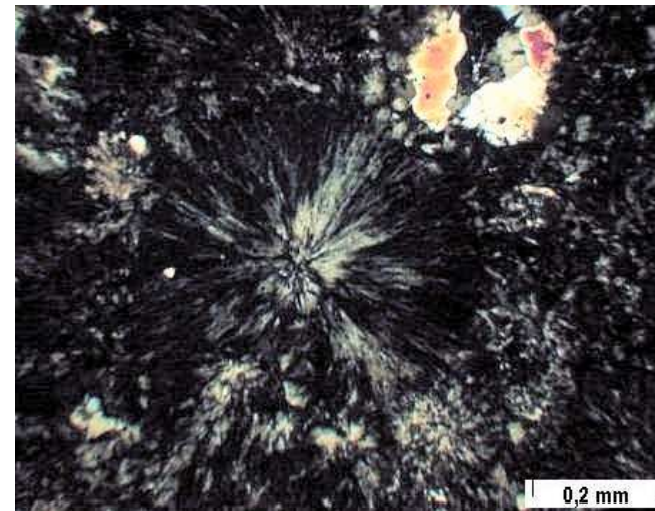
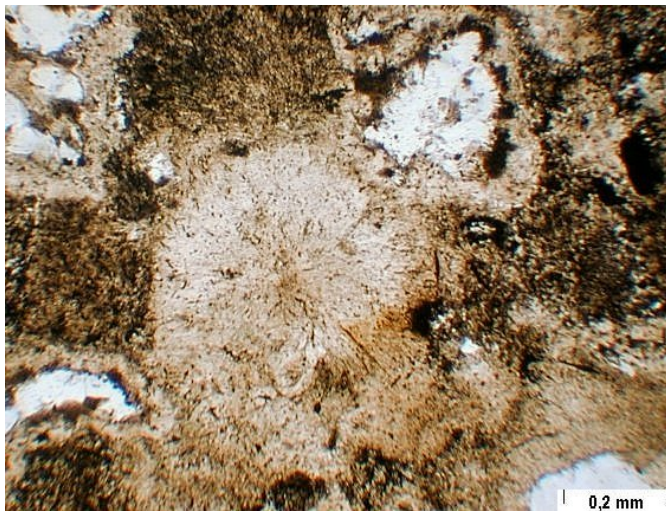
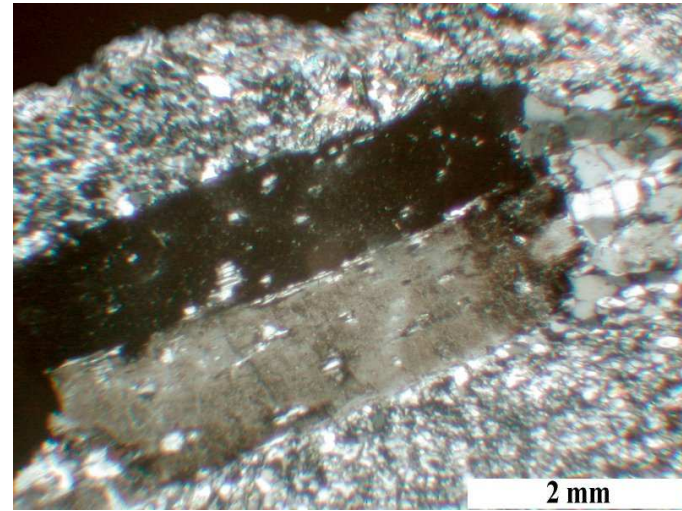
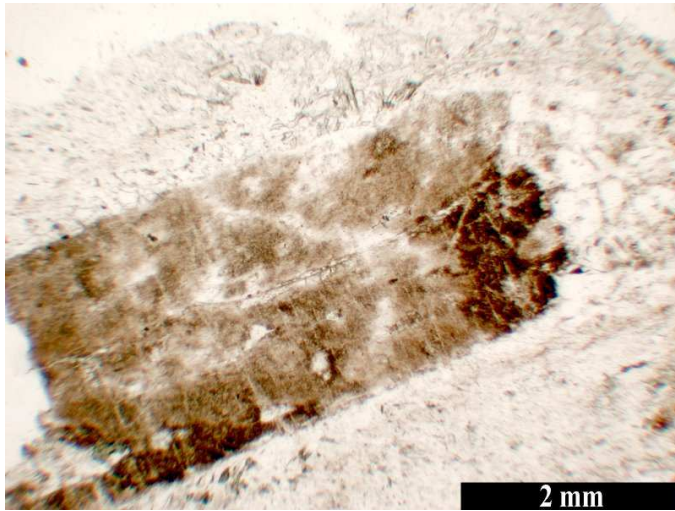
KŘEMEN



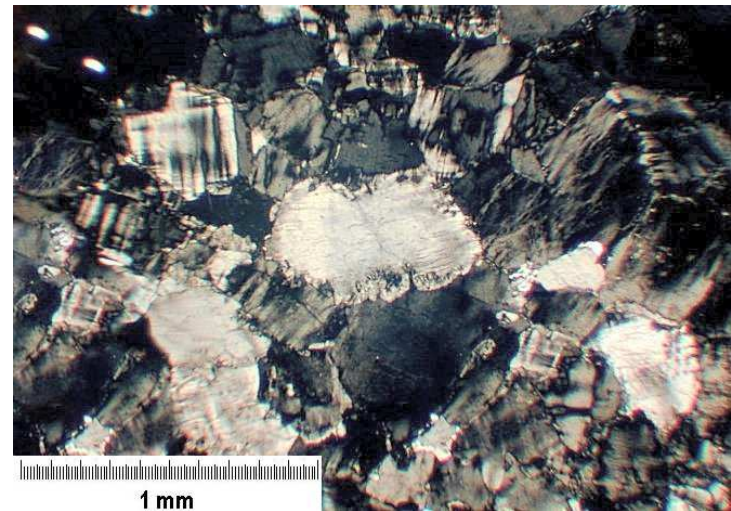
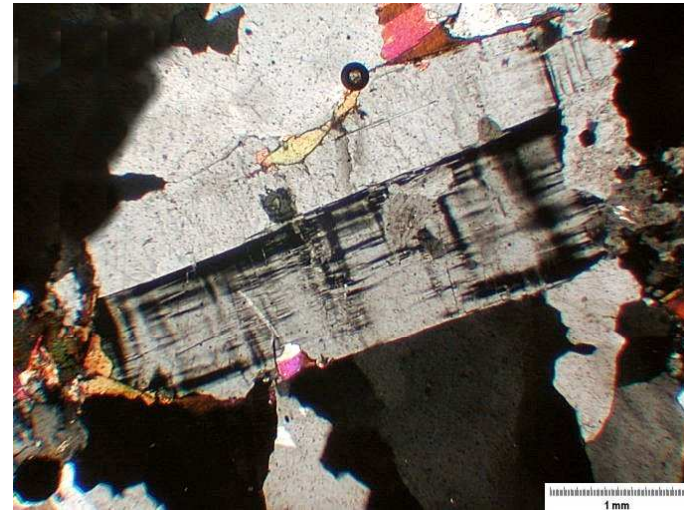
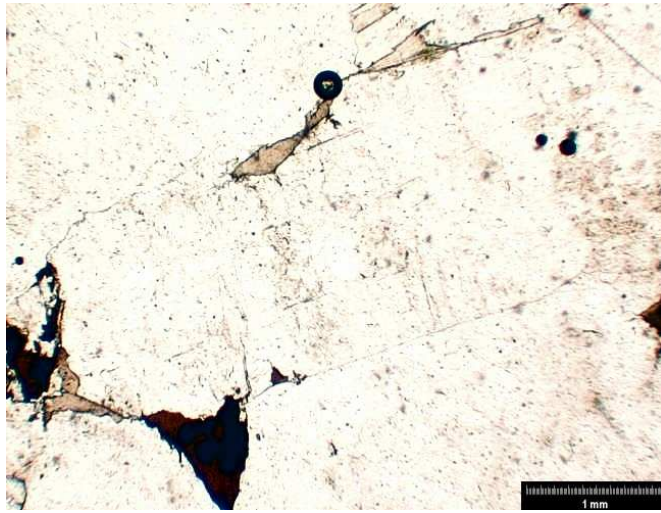
Křemen –kalcit-chalcedon



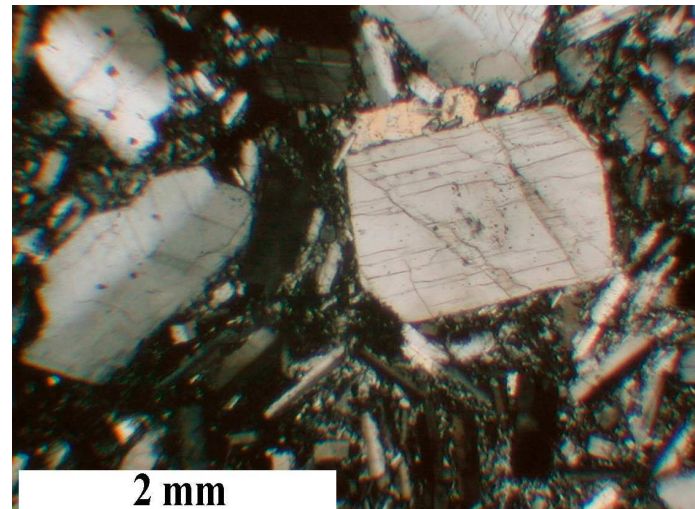
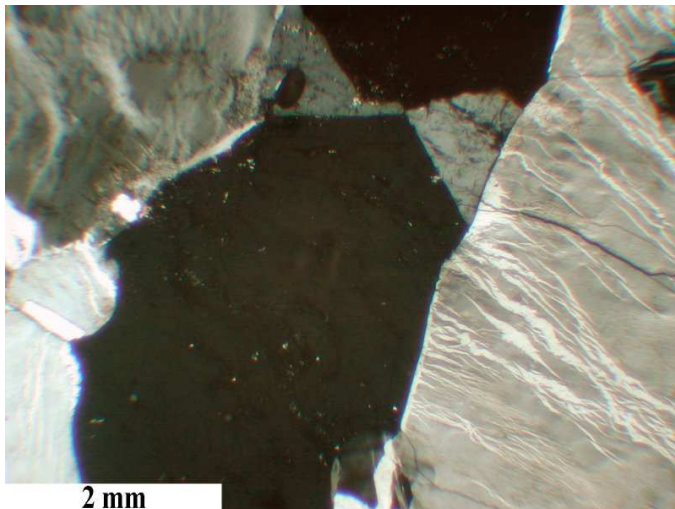
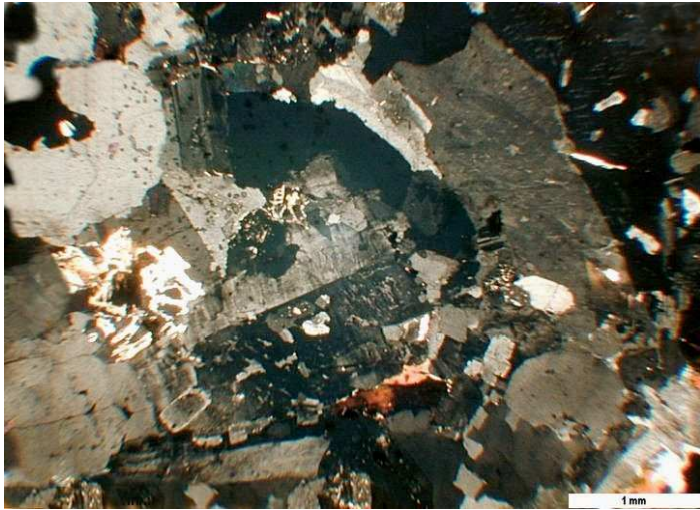
ortoklas



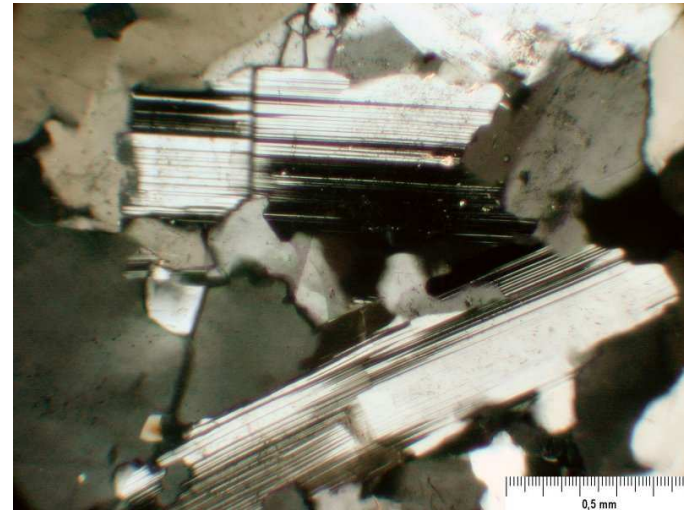
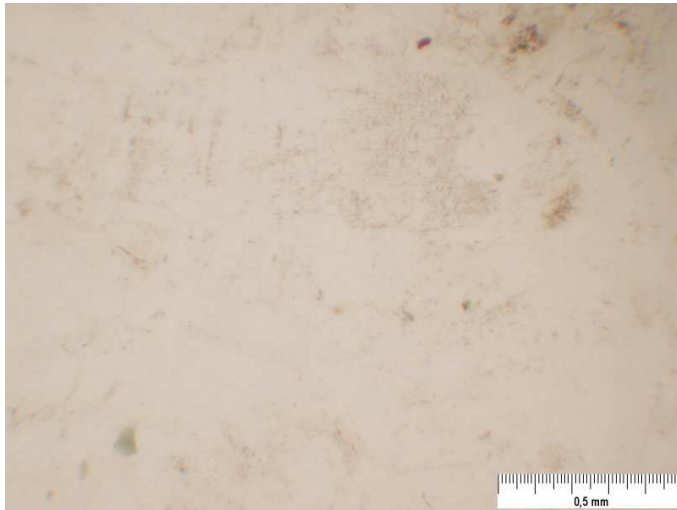
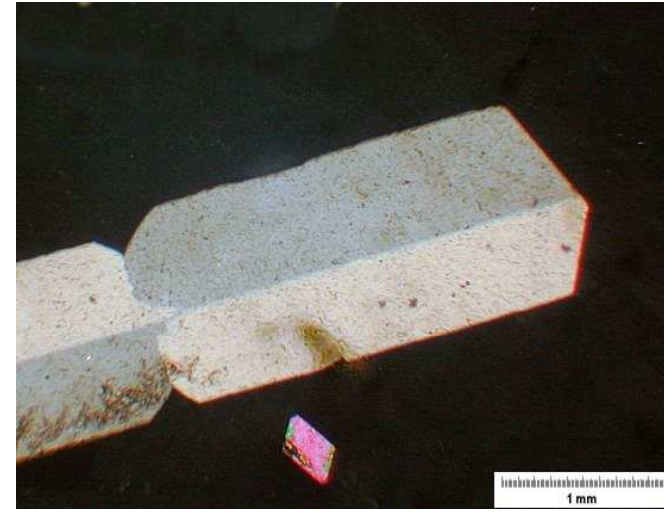
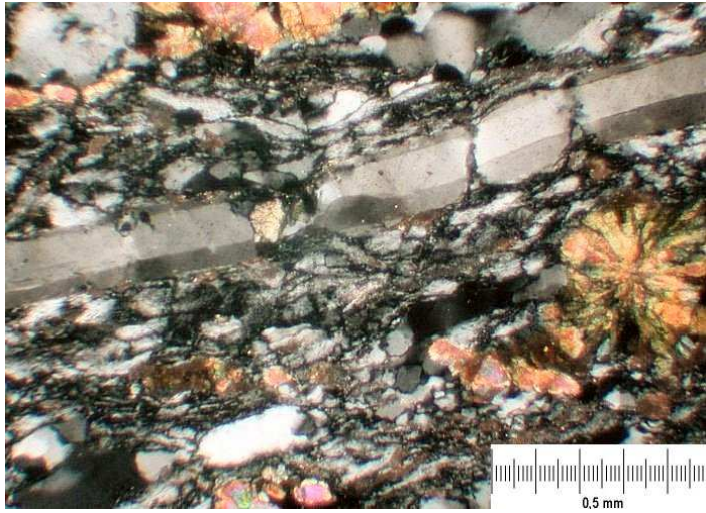
mikroclin



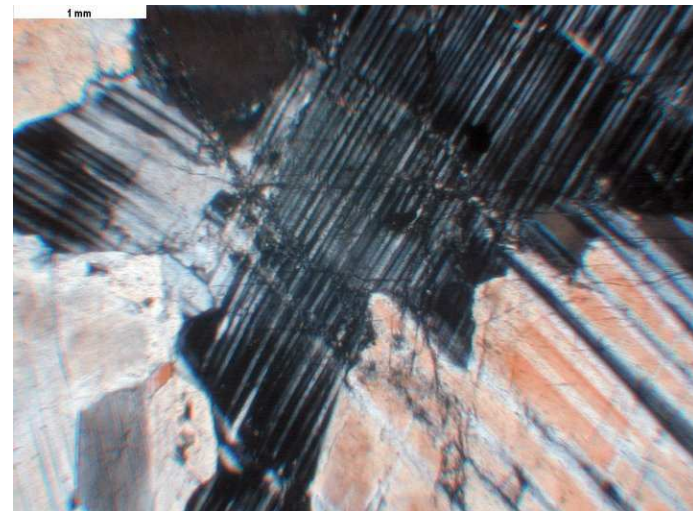
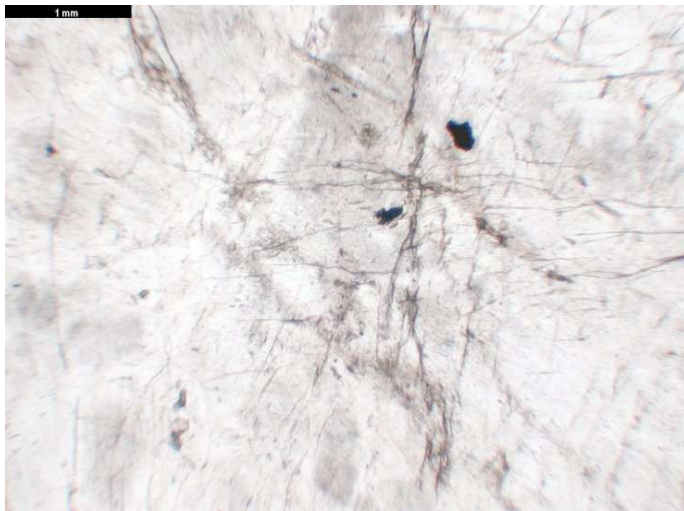
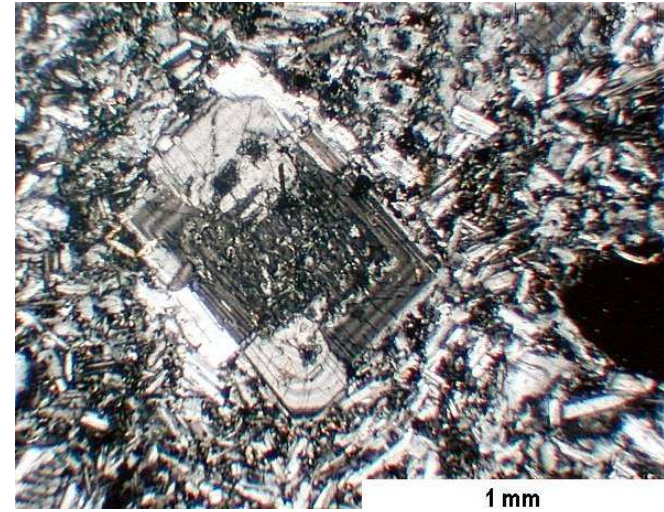
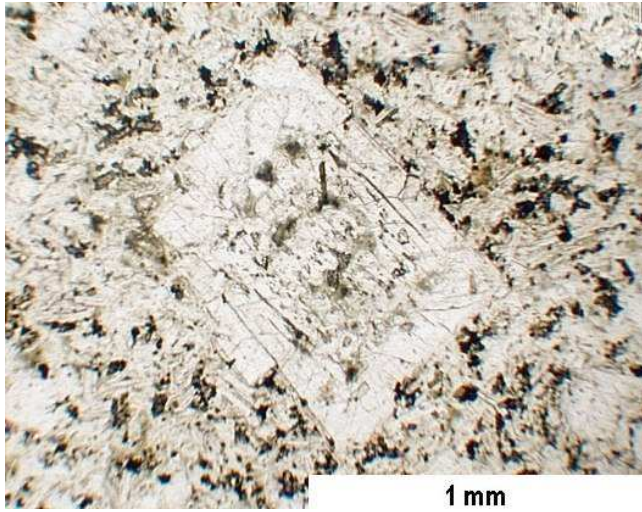
Perthity-sanidin



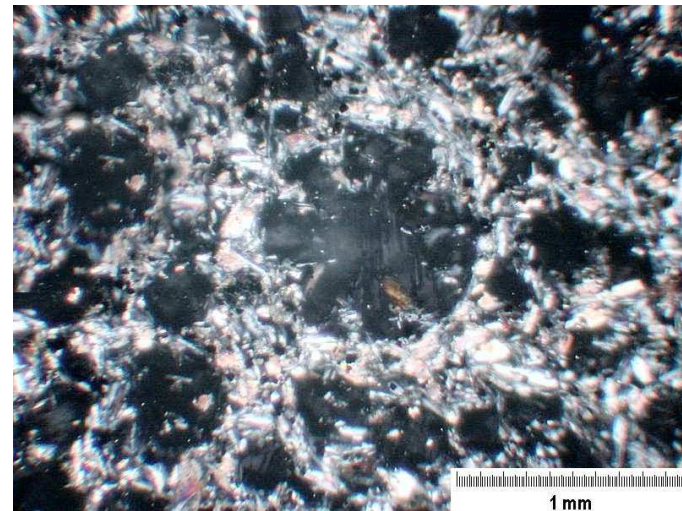
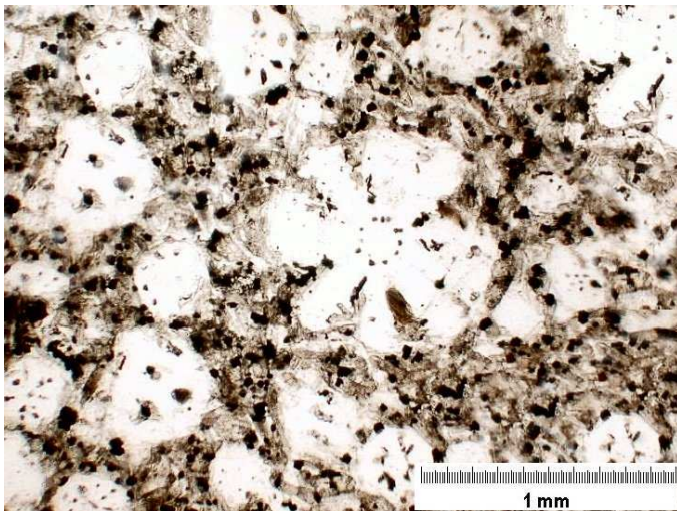
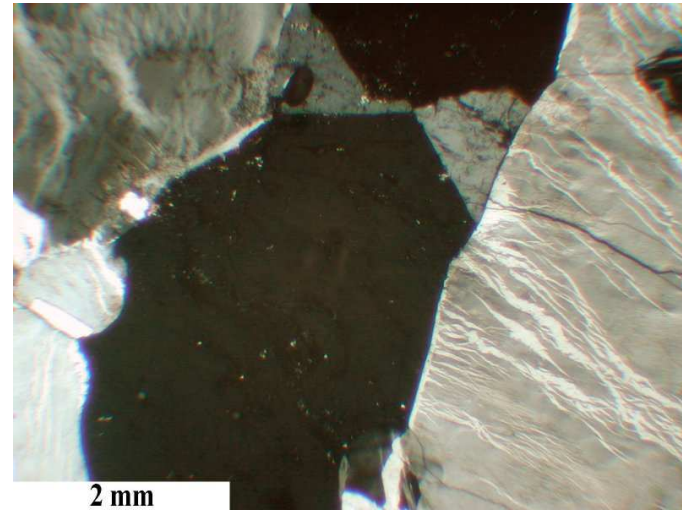
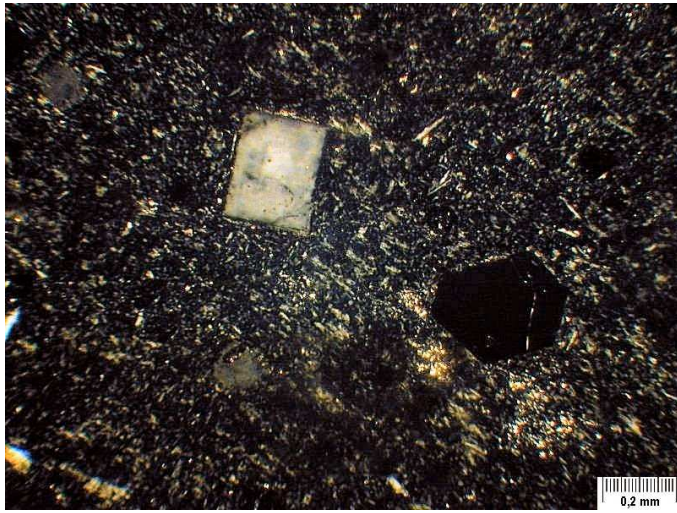
albit



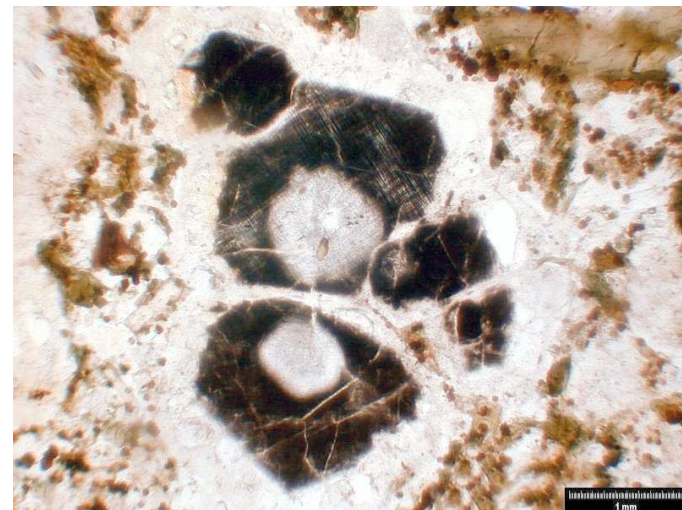
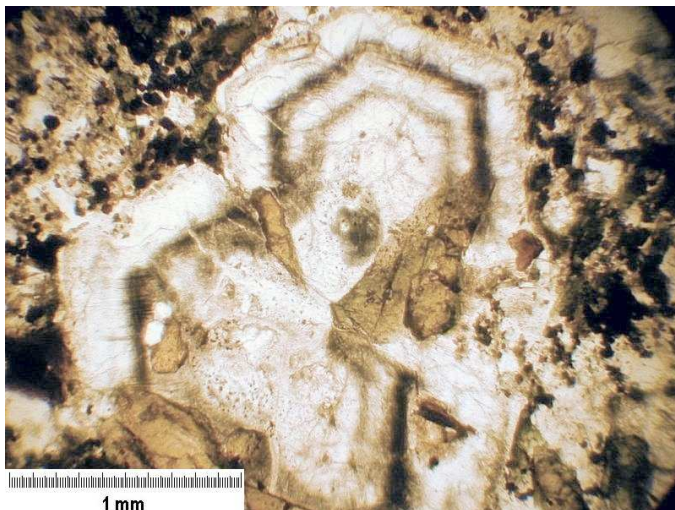
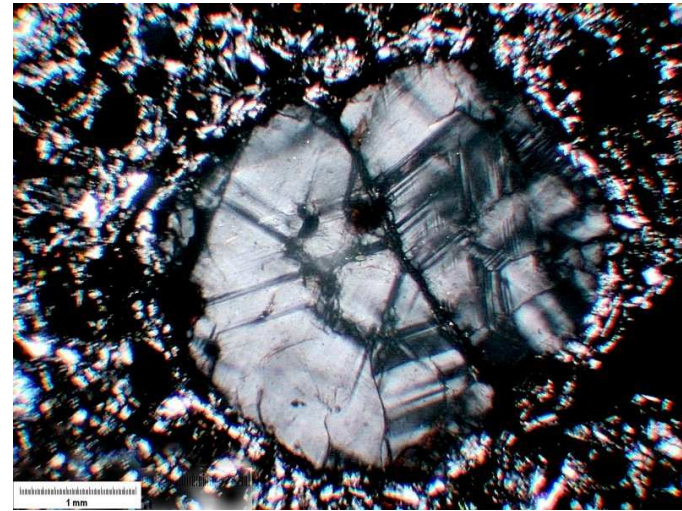
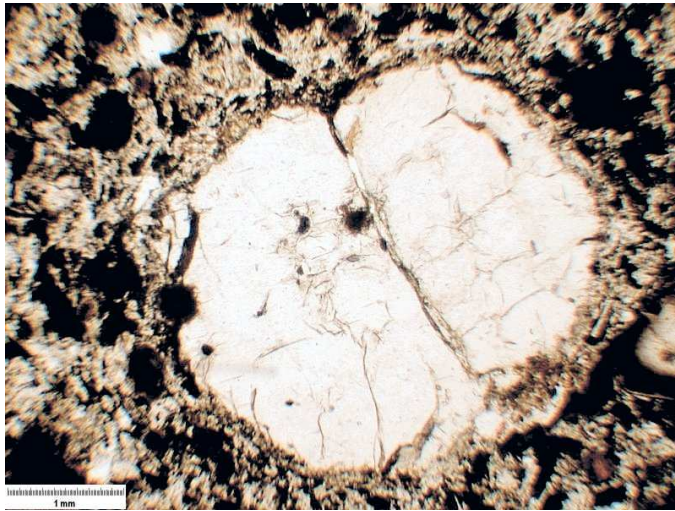
Andezín -anortit



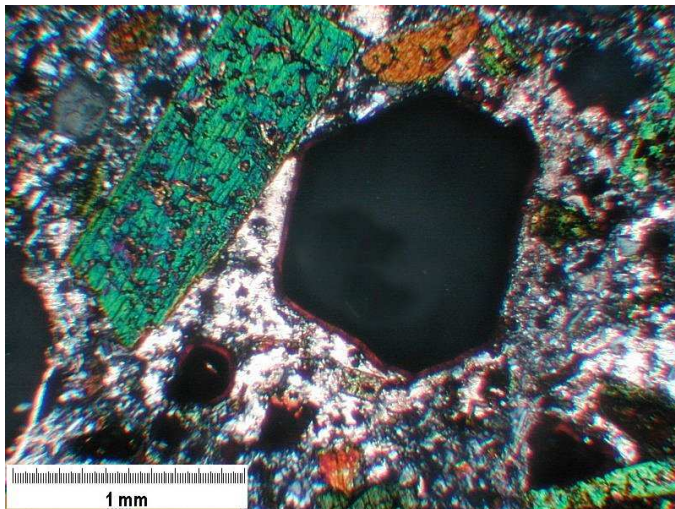
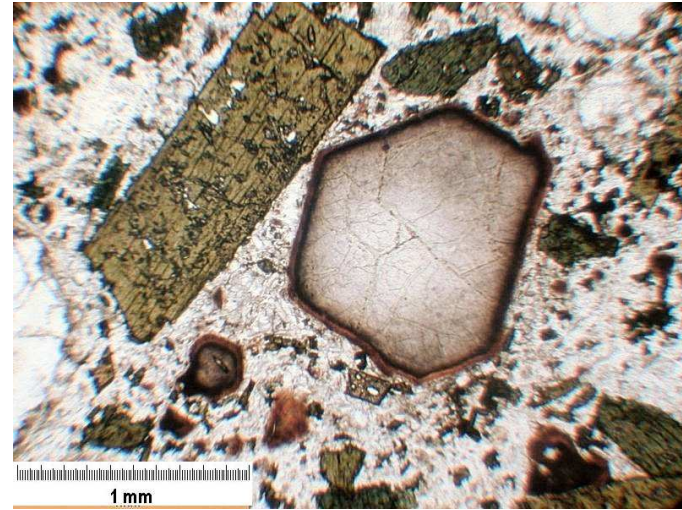
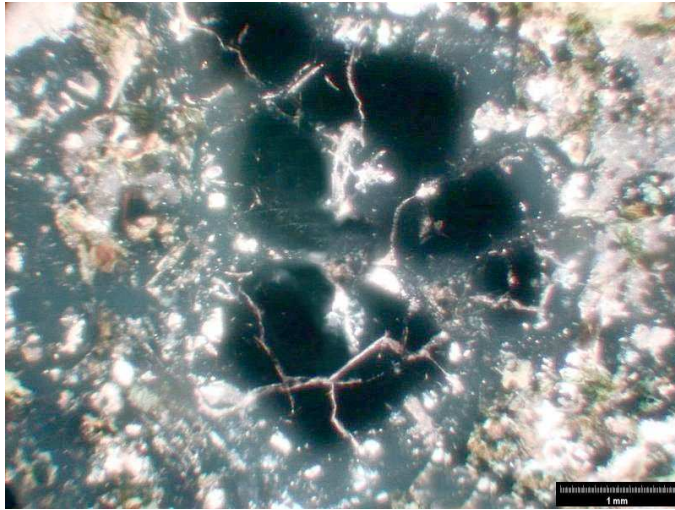
Foidy-zástupci živců – nefelin-leucit



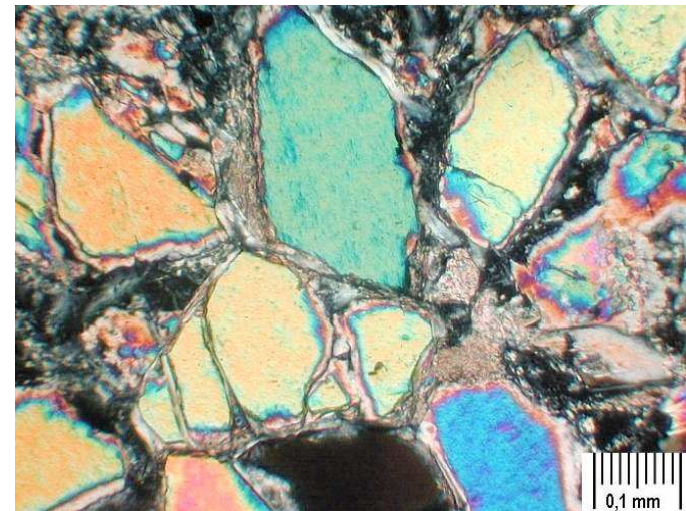
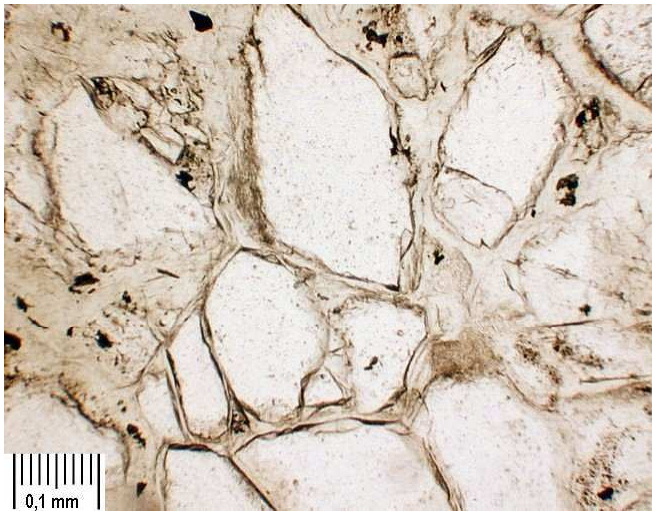
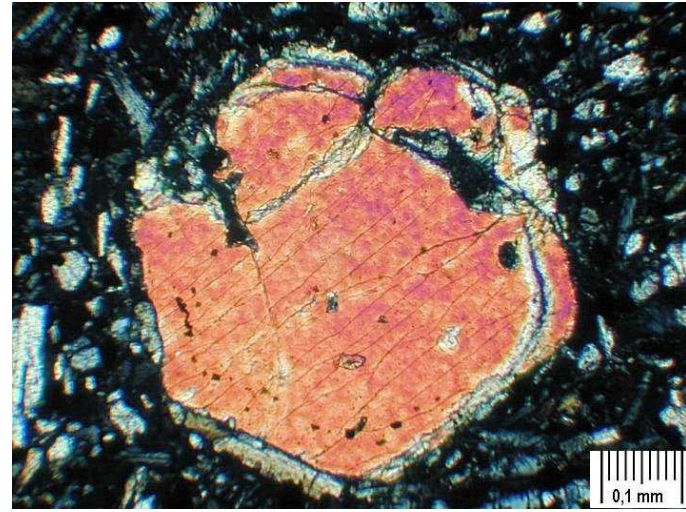
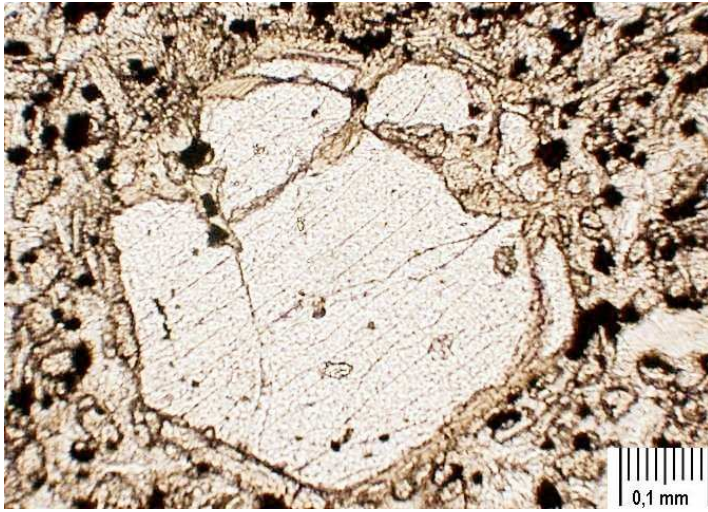
Leucit-parketování –sodalit



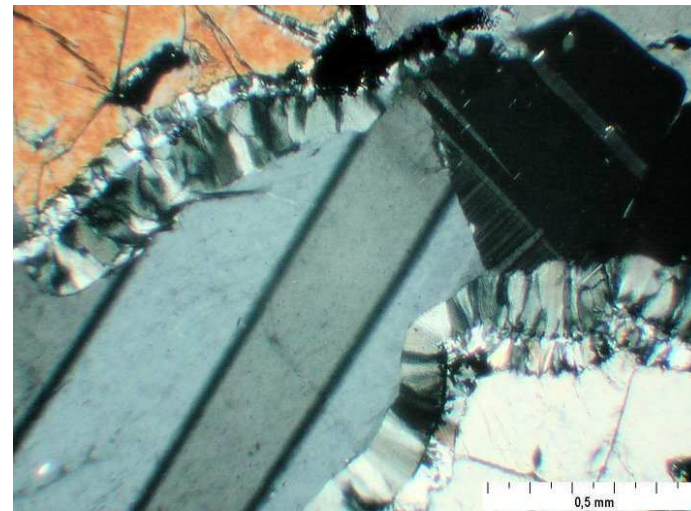
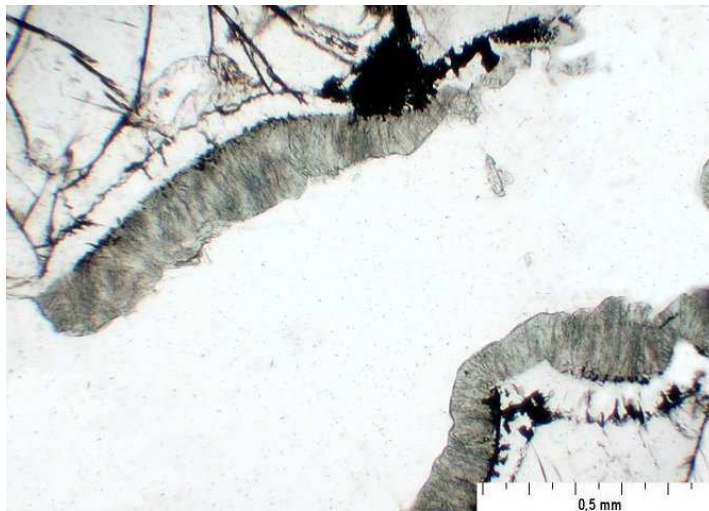
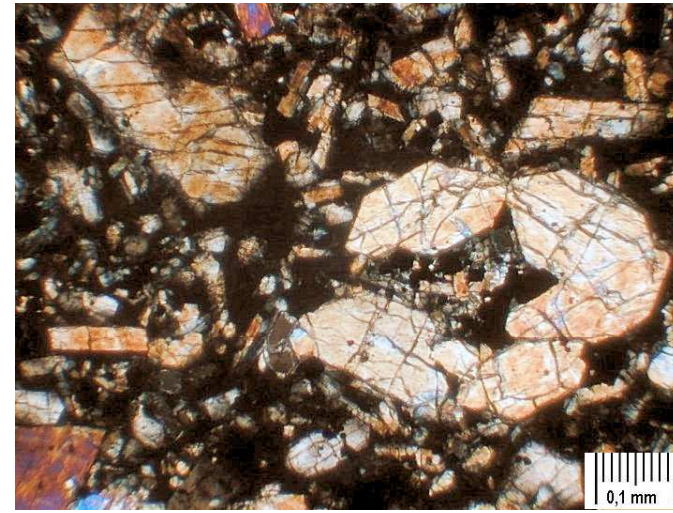
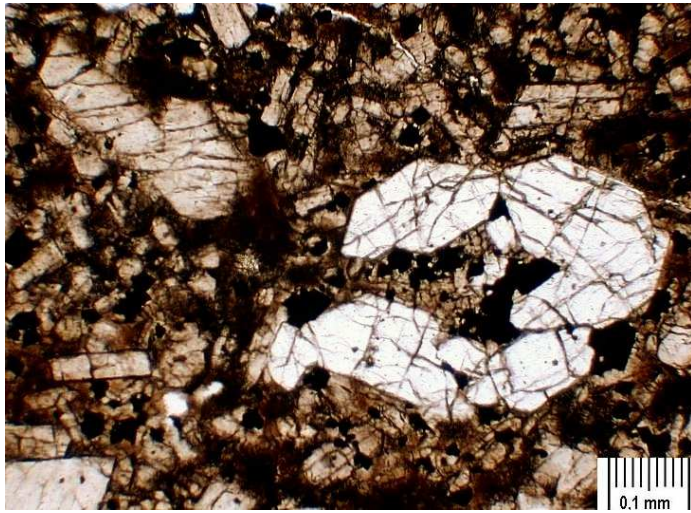
sodalit



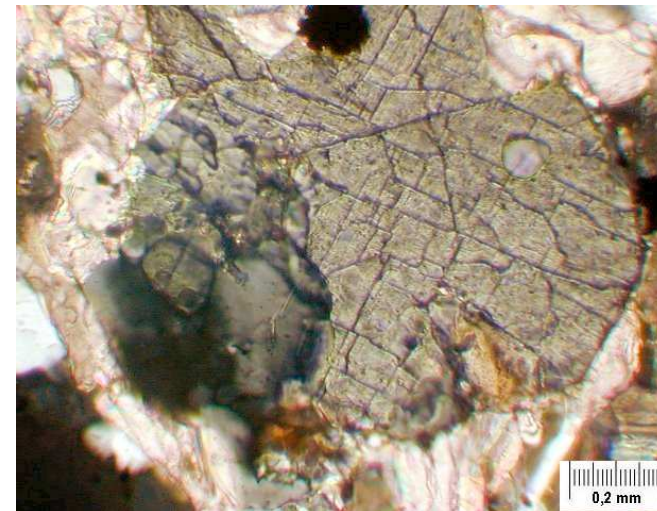
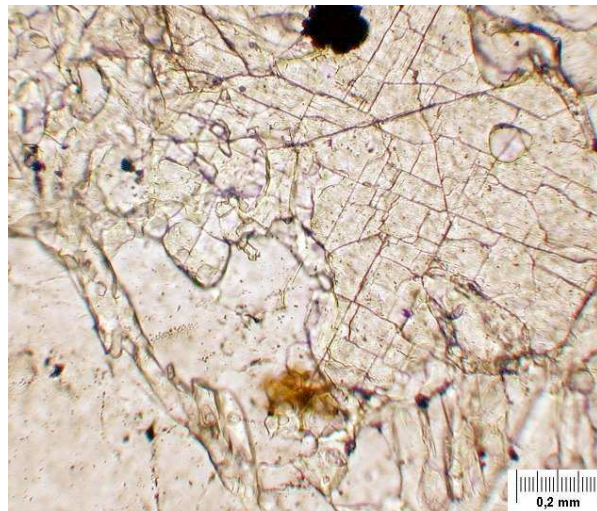
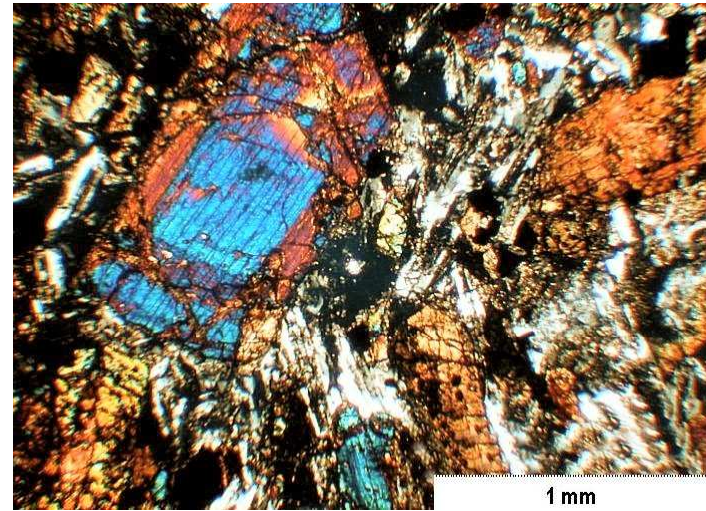
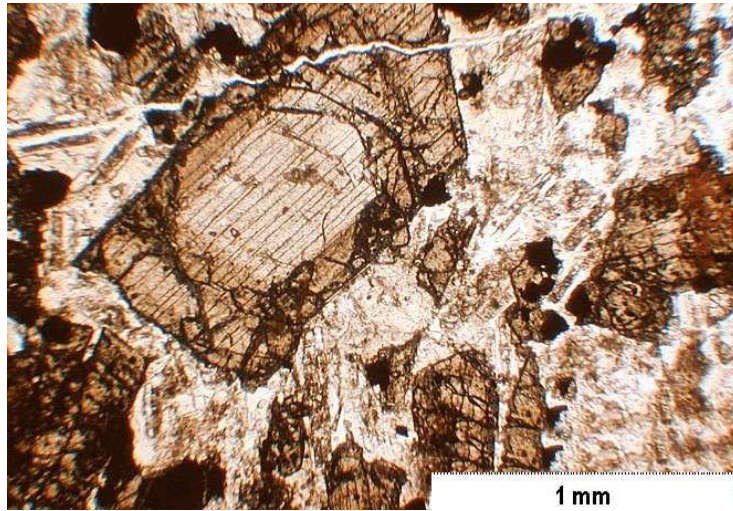
olivín



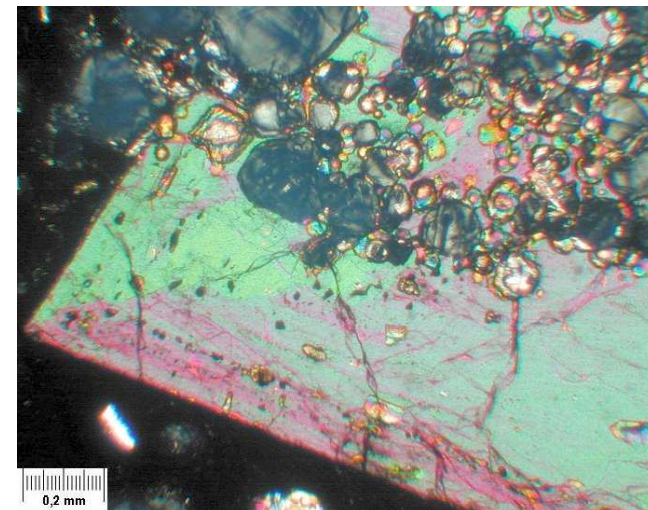
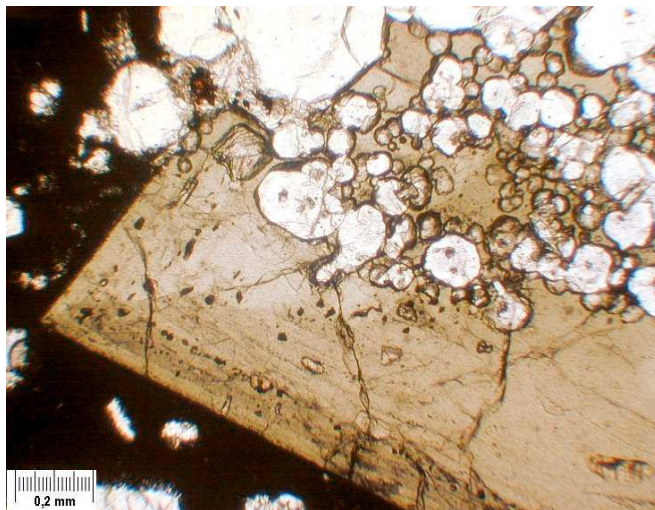
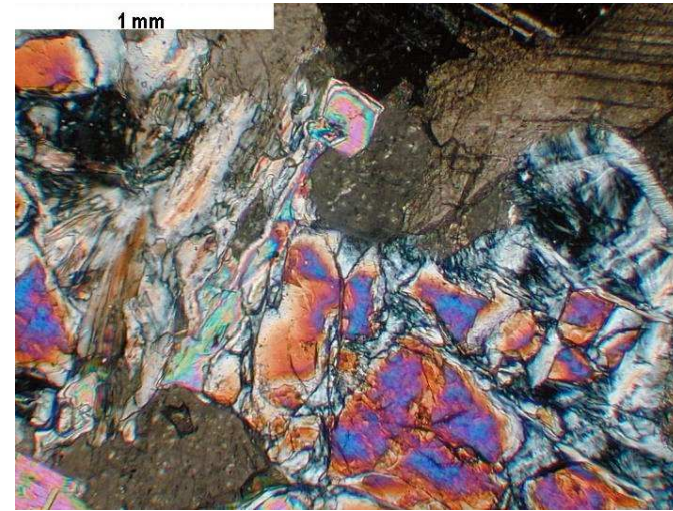
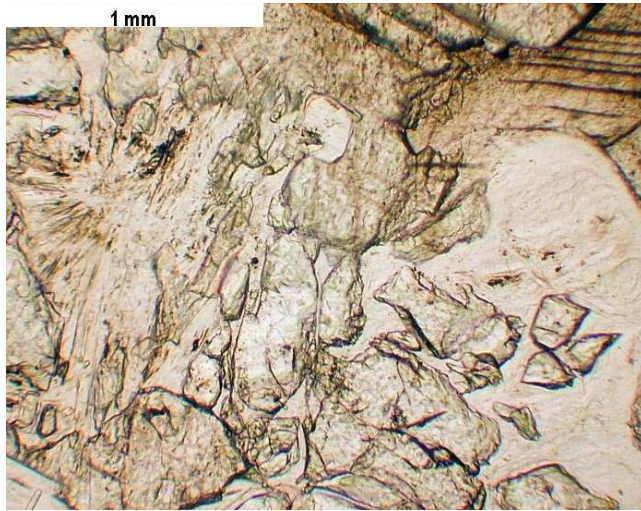
Olivín vedle pyroxenu kelyfitické lemy na styku olivínu a plagioklasu (amfiboly)



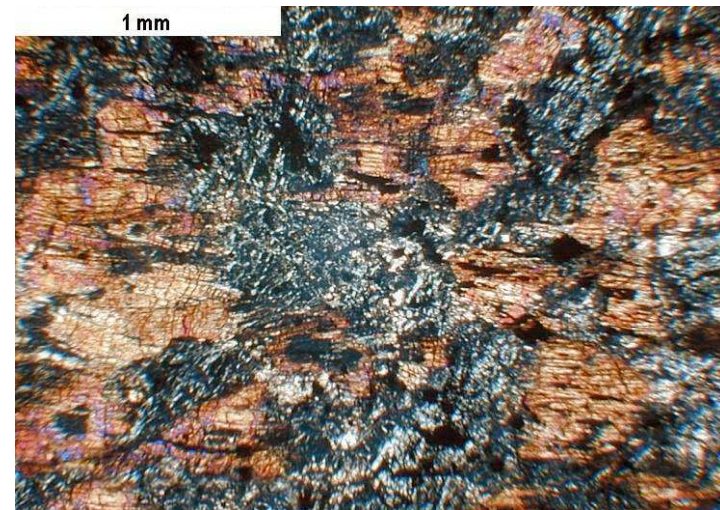
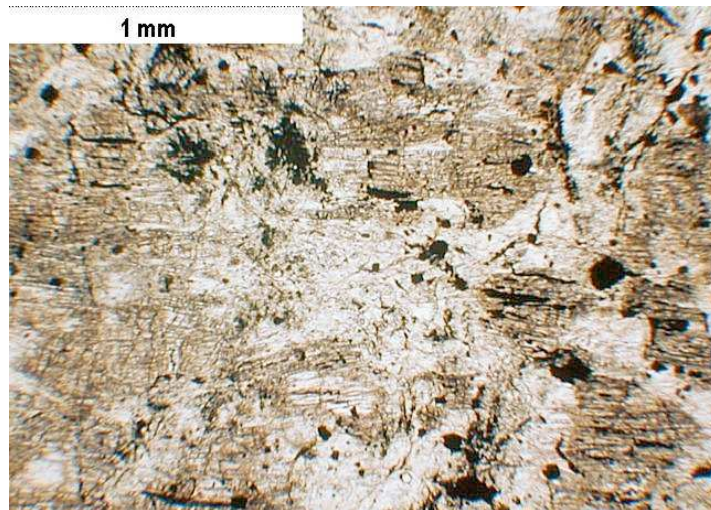
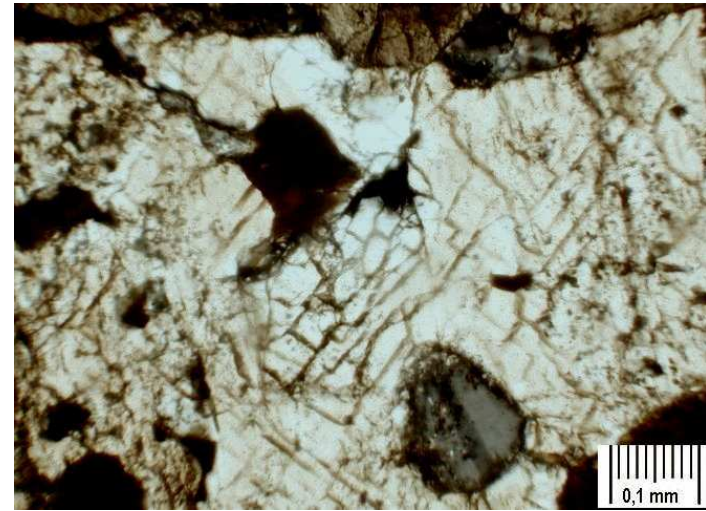
Pyroxeny augit - diopsid



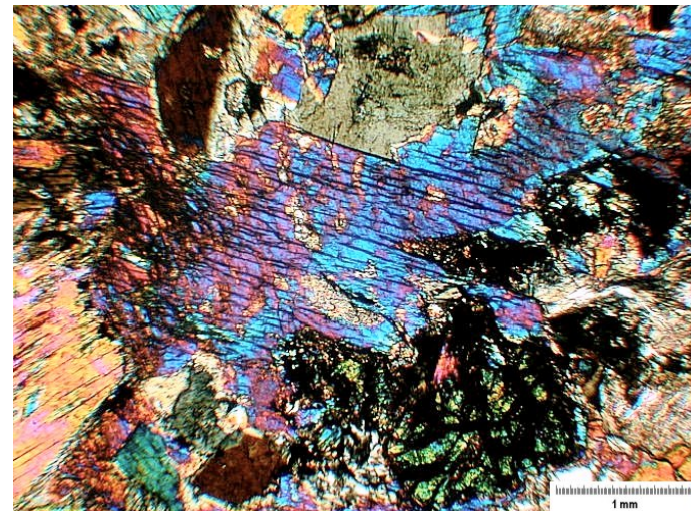
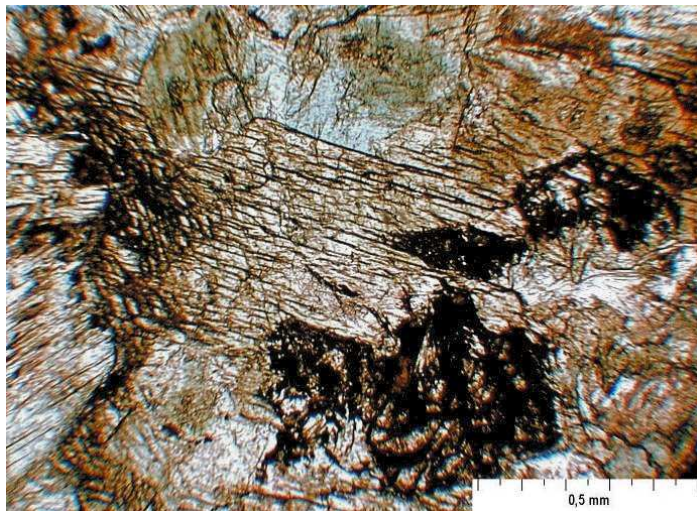
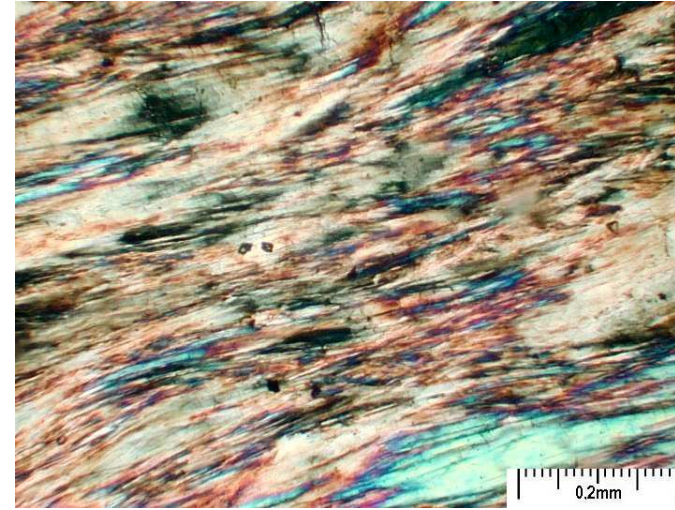
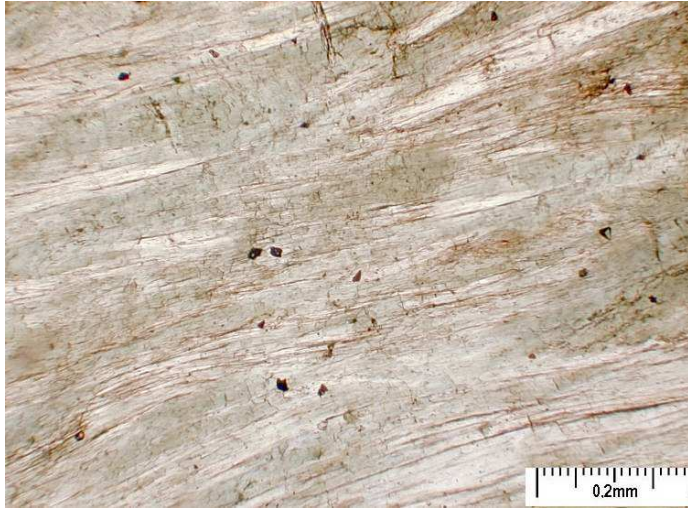
Pyroxeny diopsid - egrin



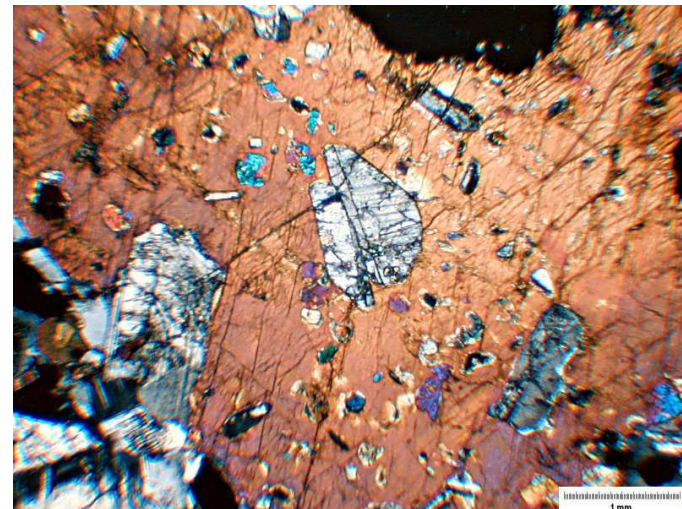
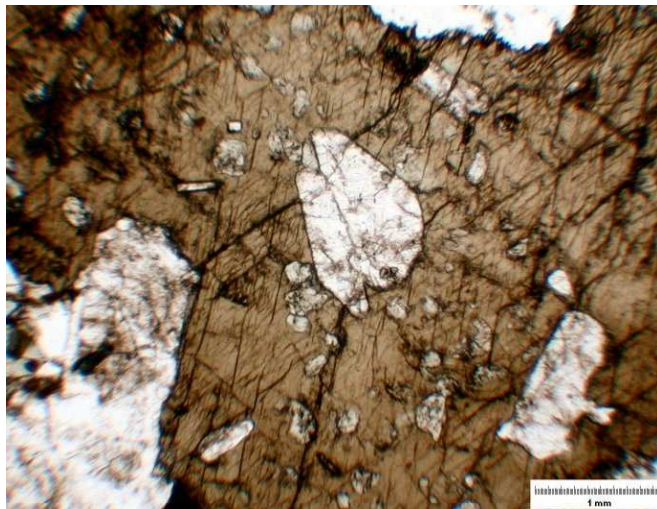
Pyroxeny enstatit



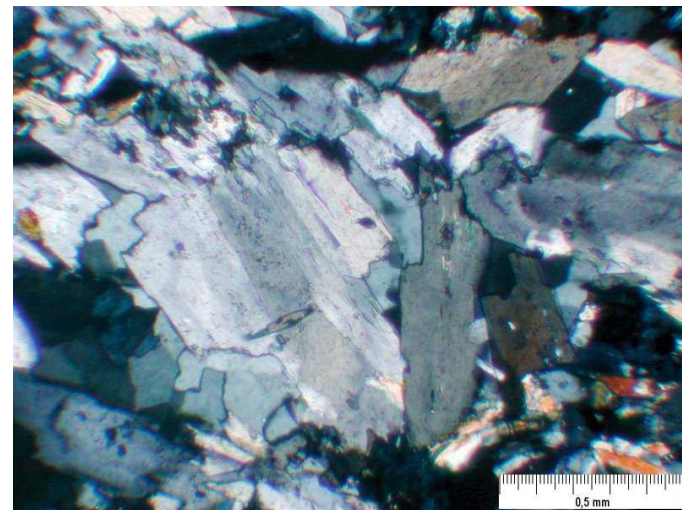
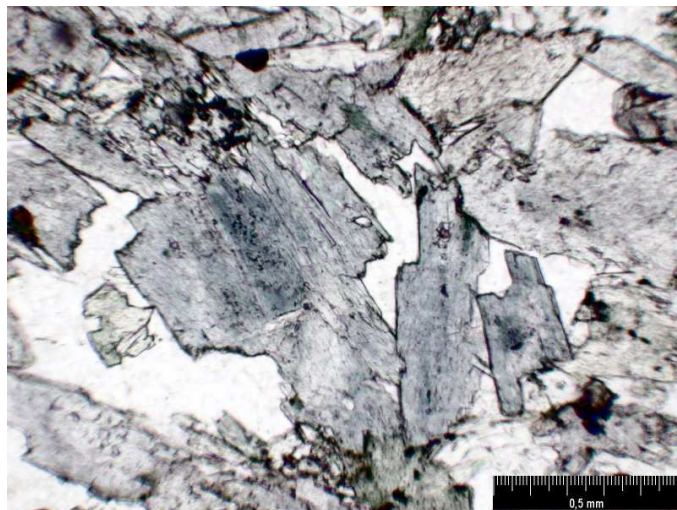
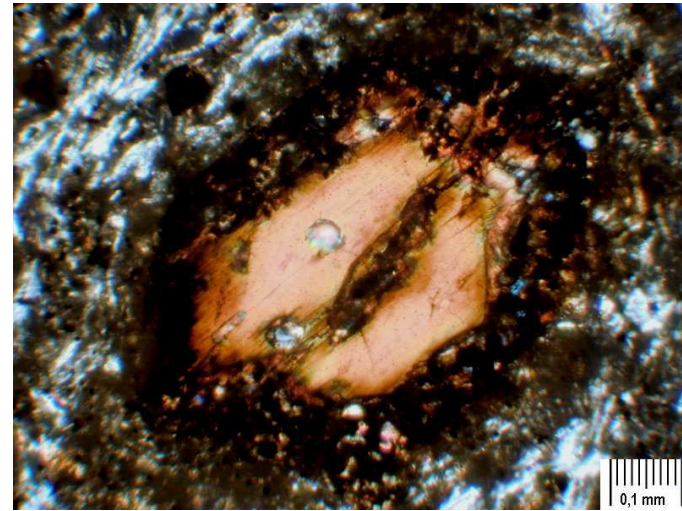
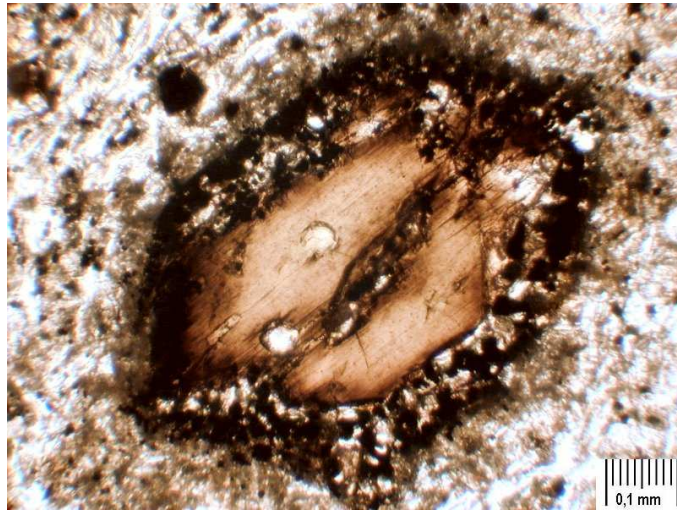
Amfiboly aktinolit



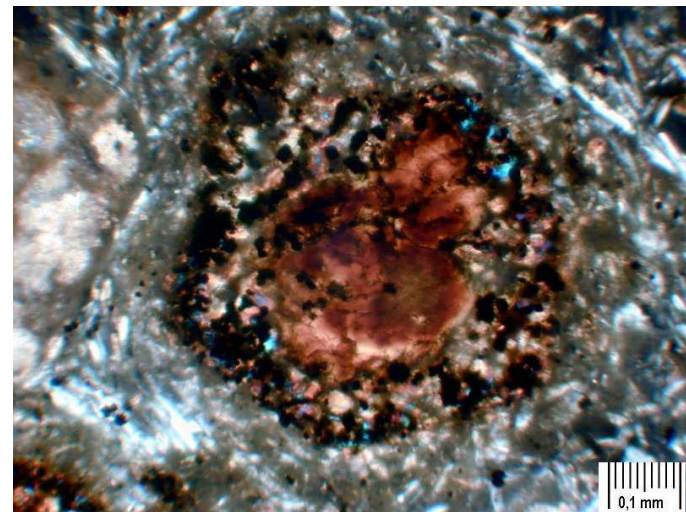
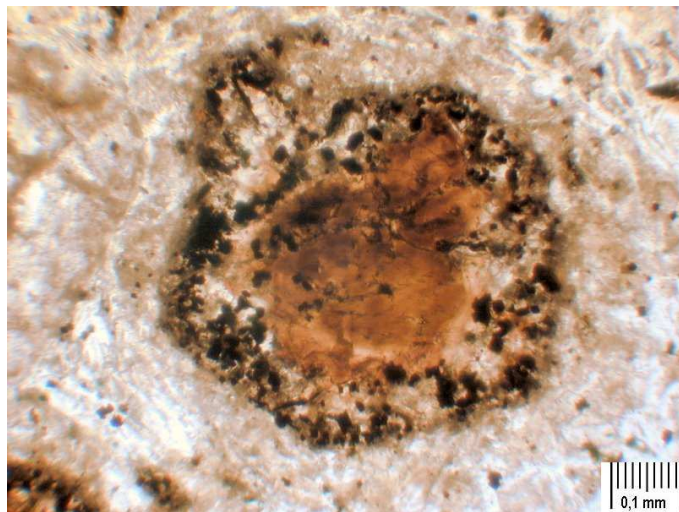
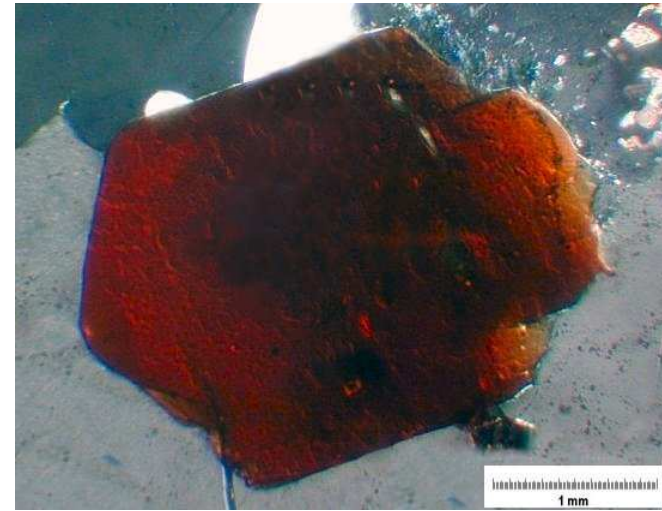
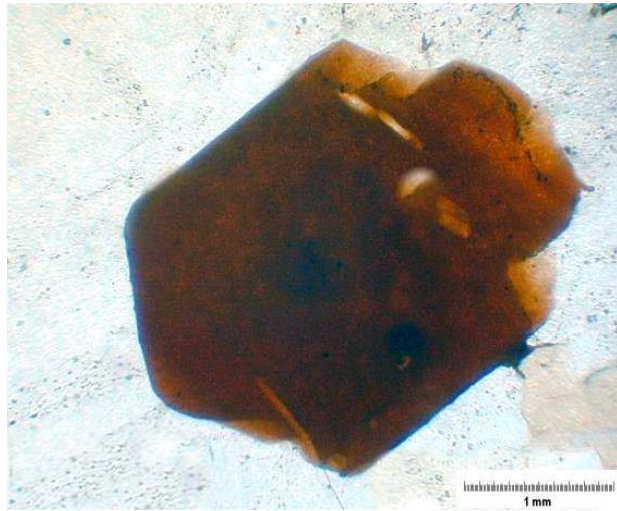
amfiboly



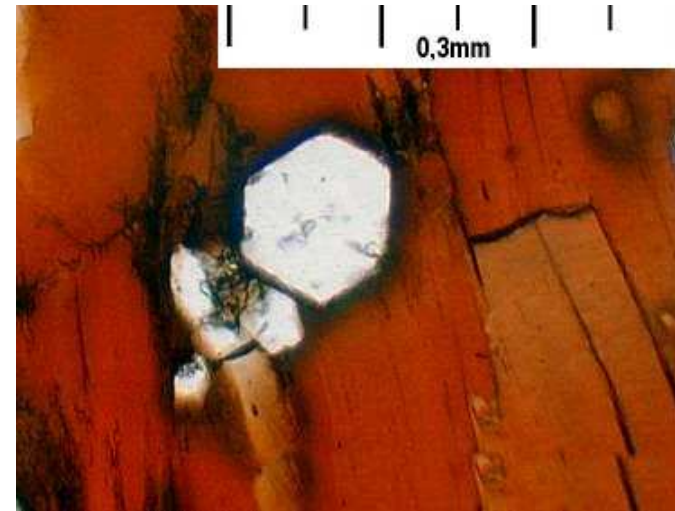
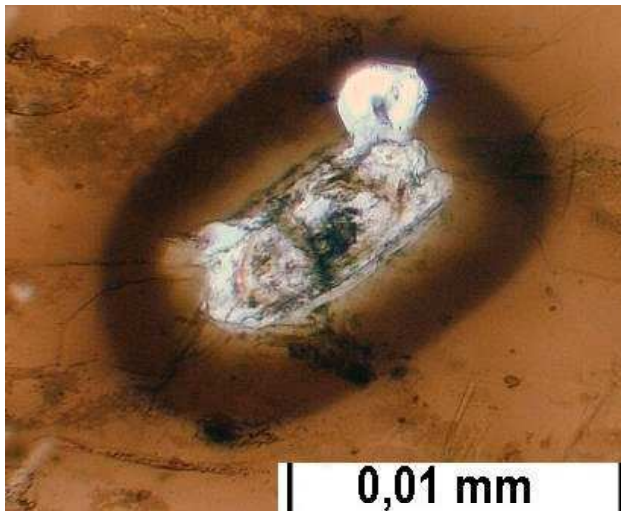
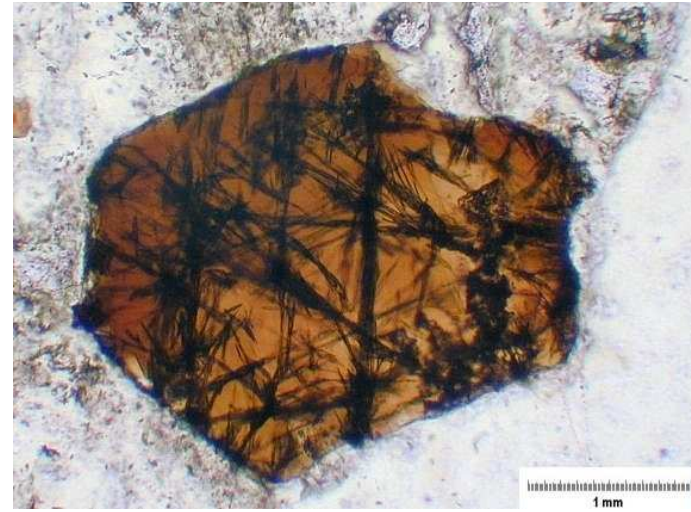
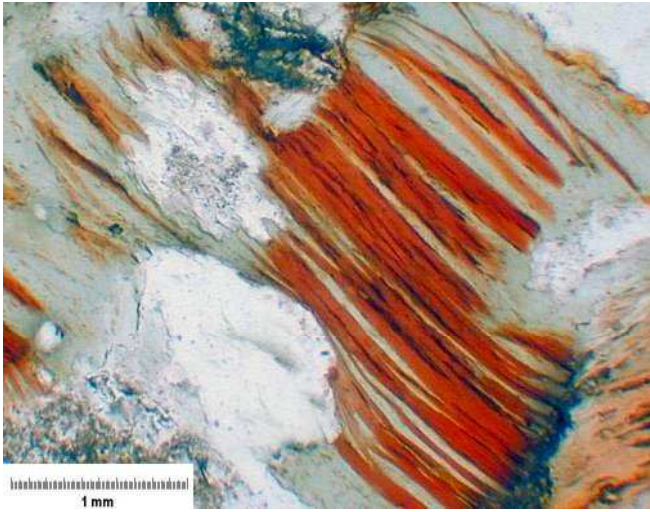
Amfiboly – opacitové lemy glaukofan



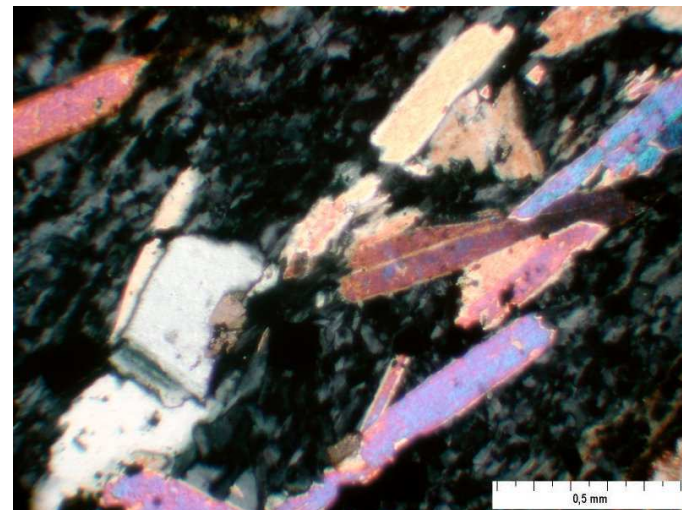
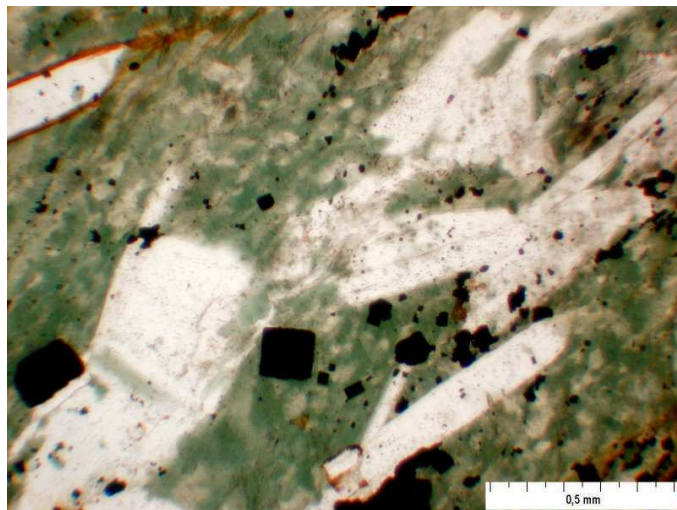
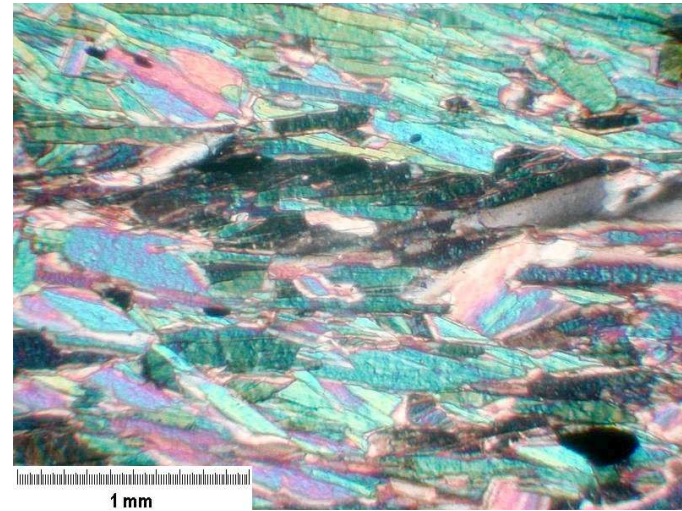
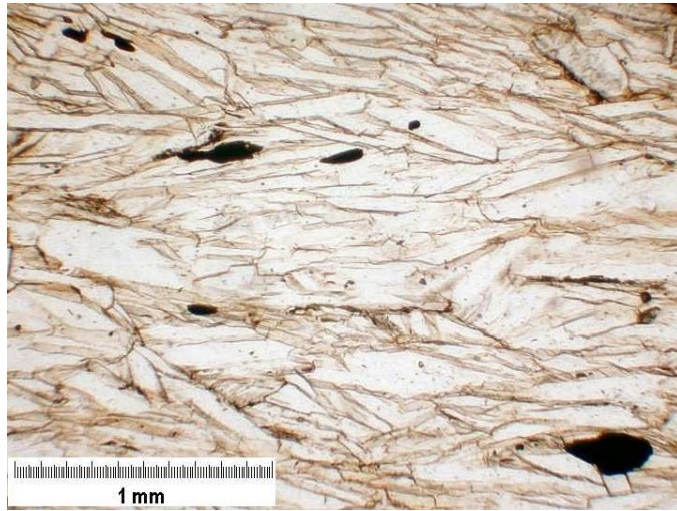
biotit



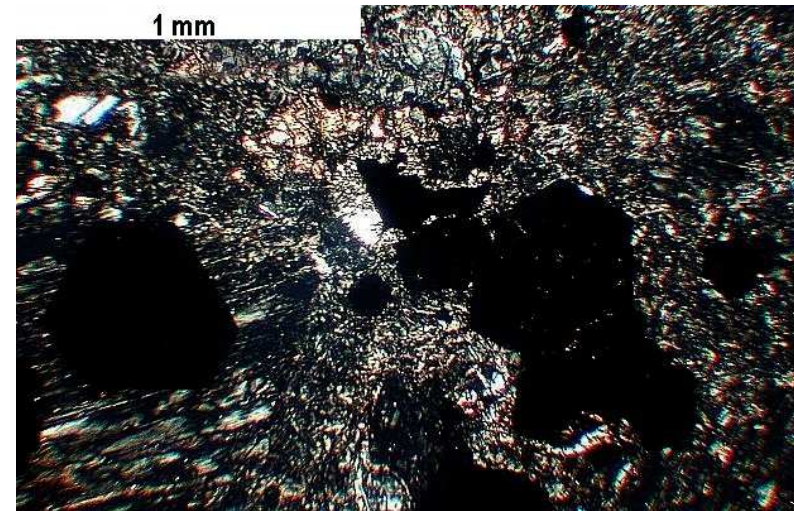
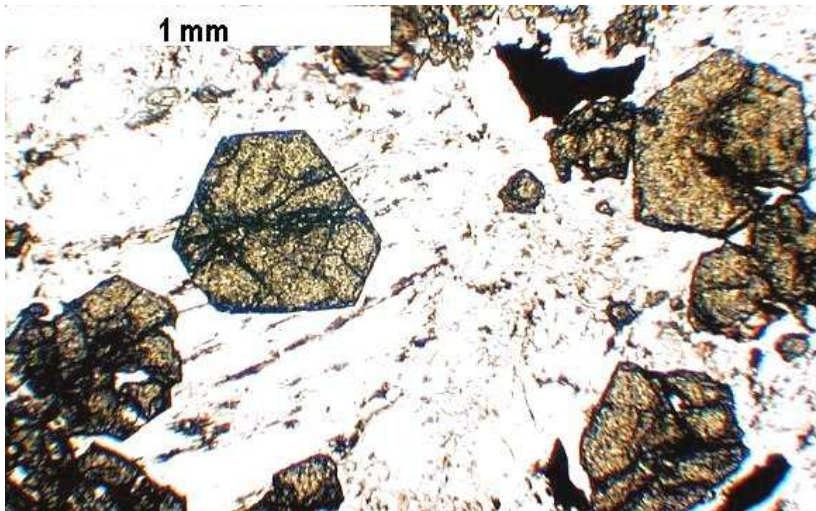
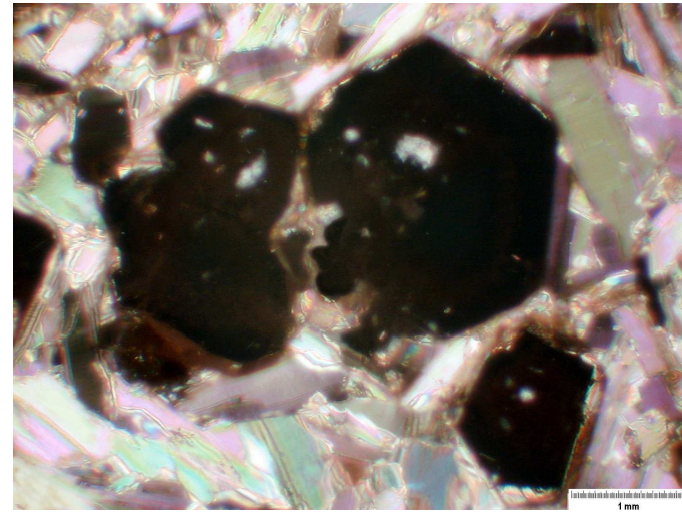
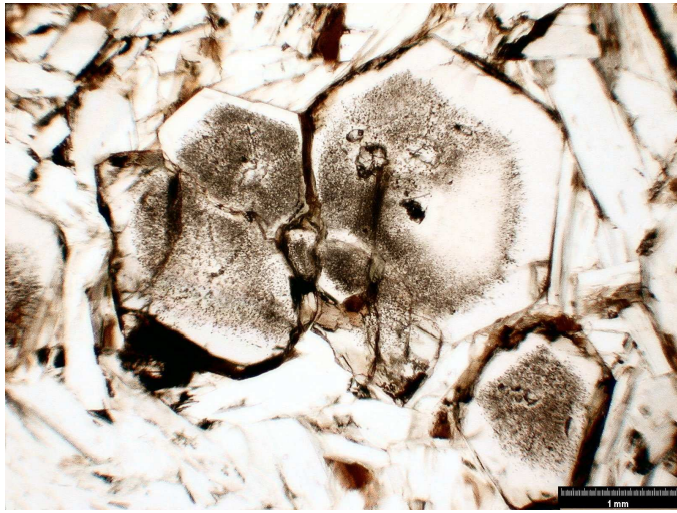
biotit



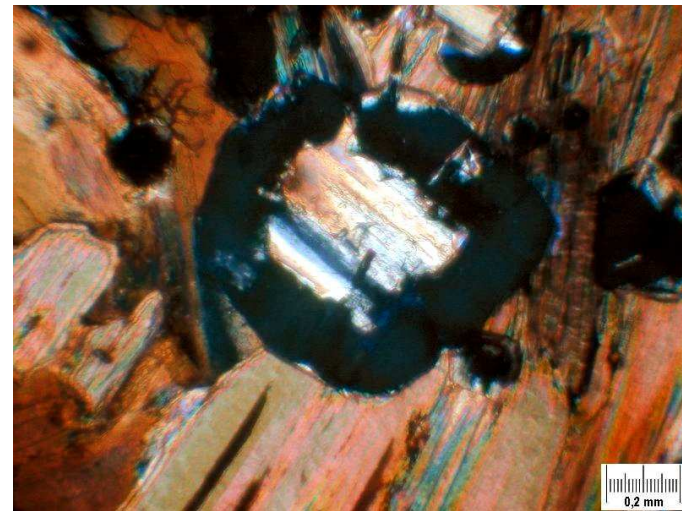
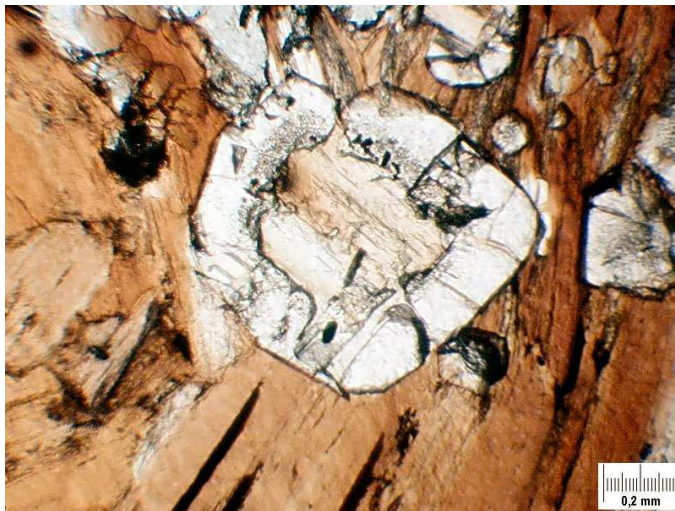
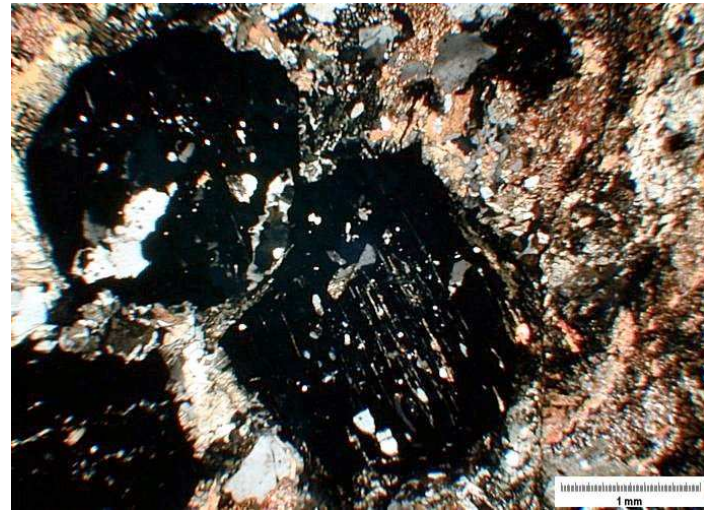
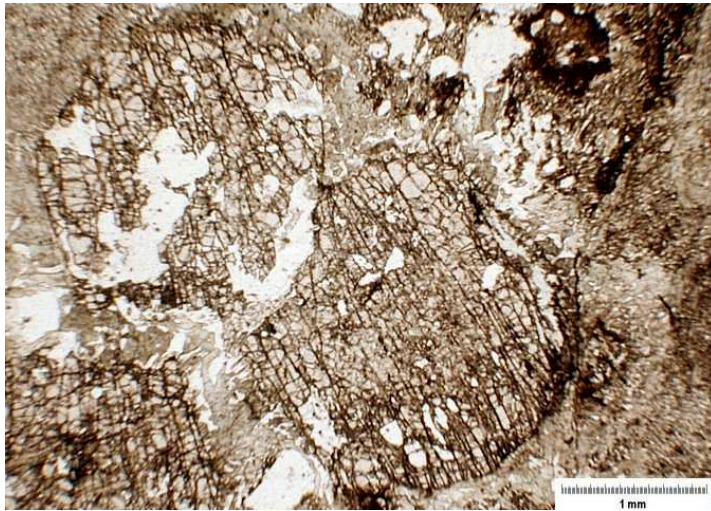
muskovit



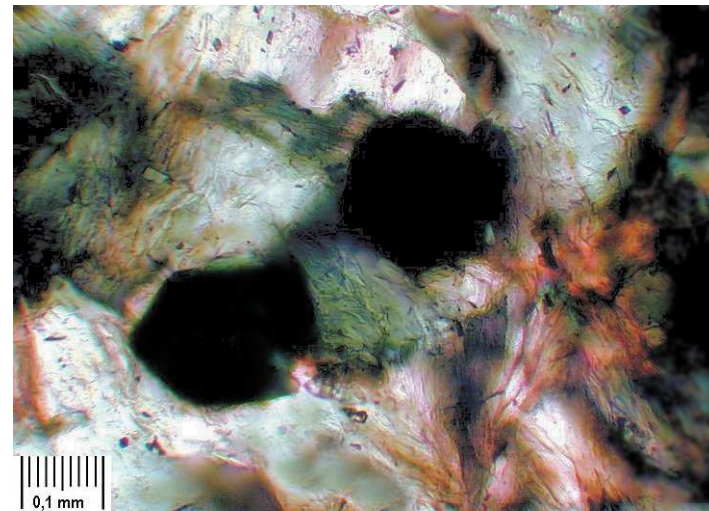
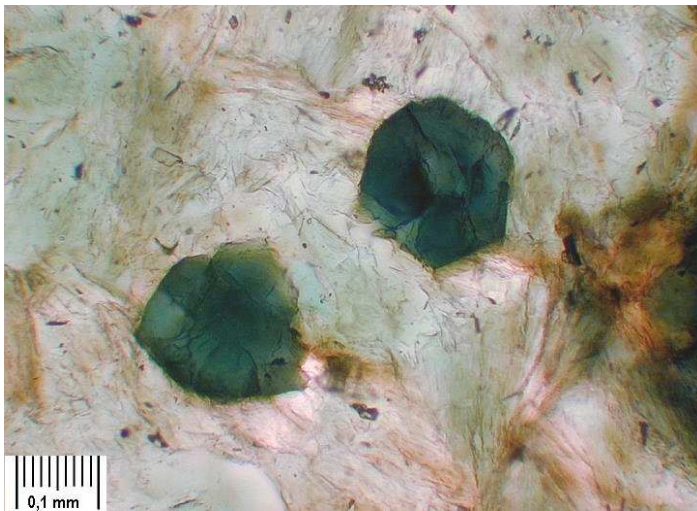
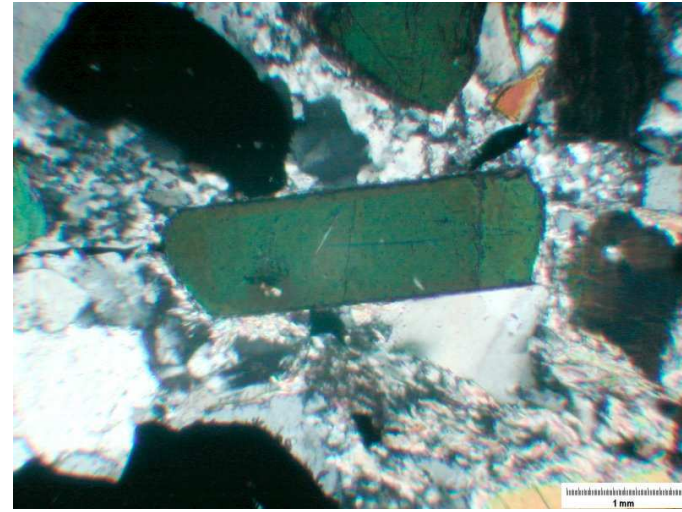
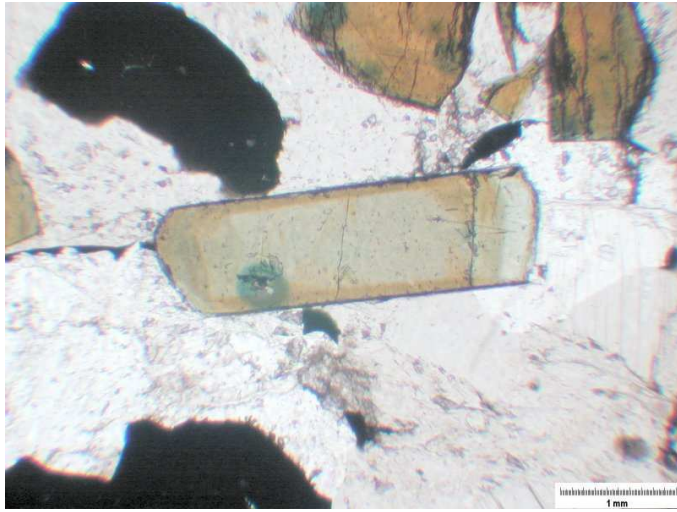
Granáty almandin - andradit



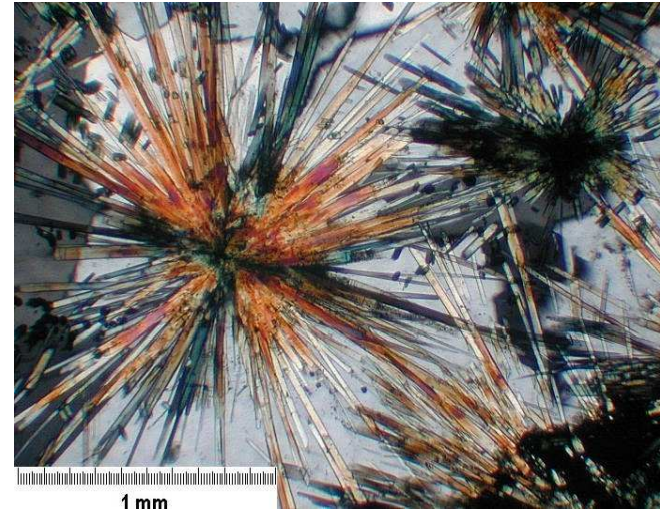
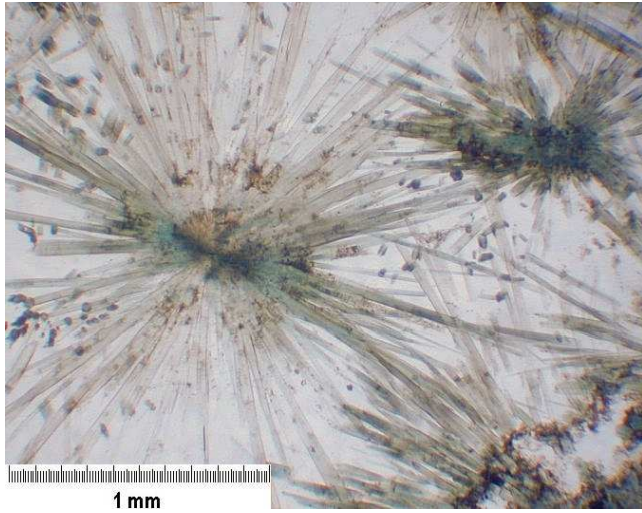
Grossular atolový granát



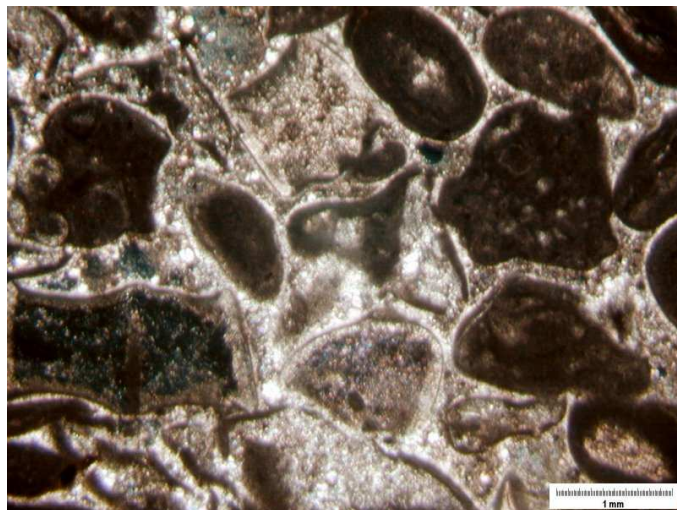
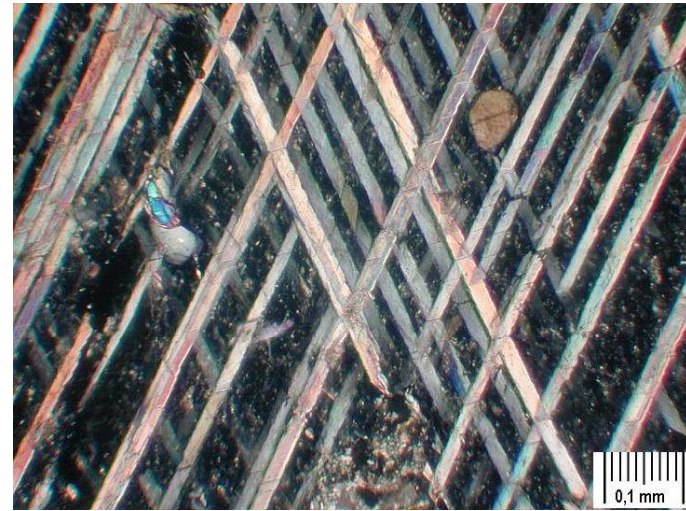
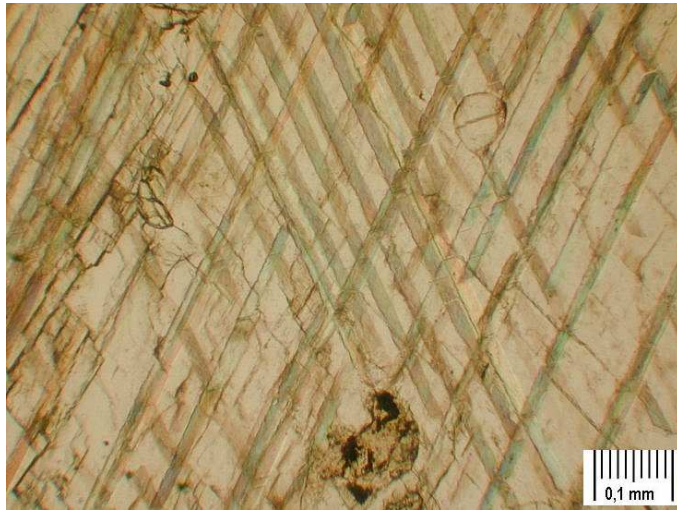
turmalín



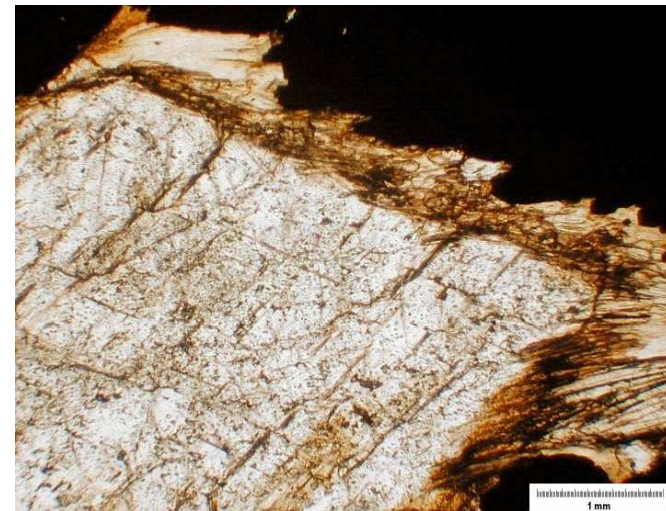
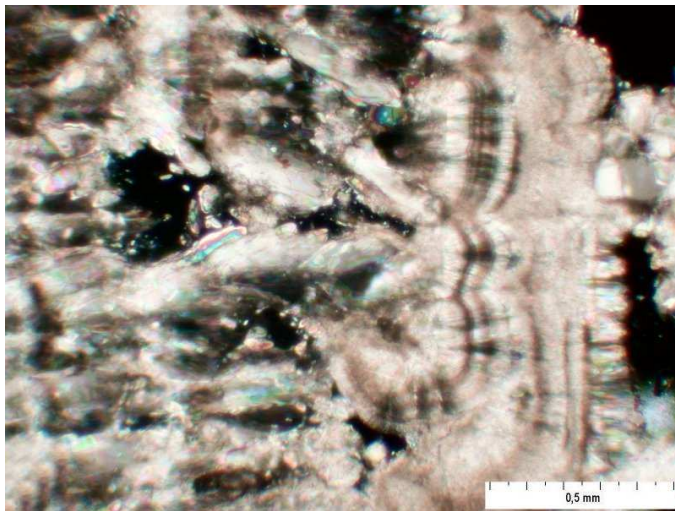
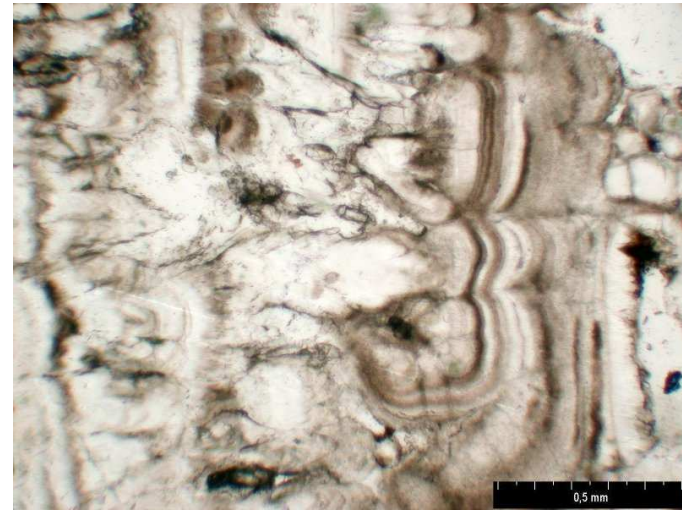
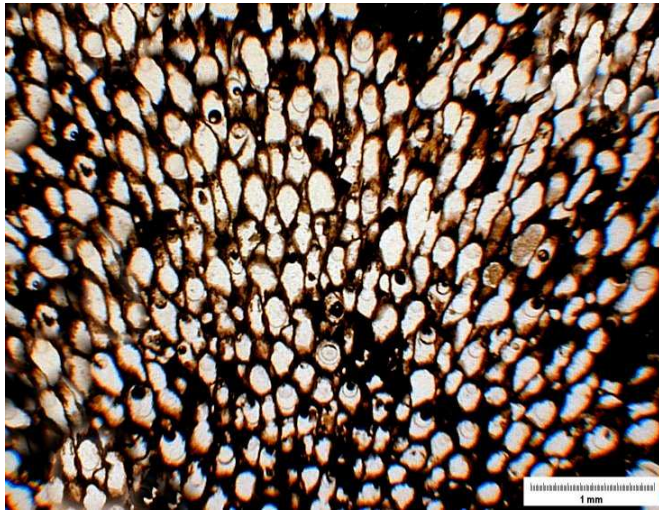
turmalín



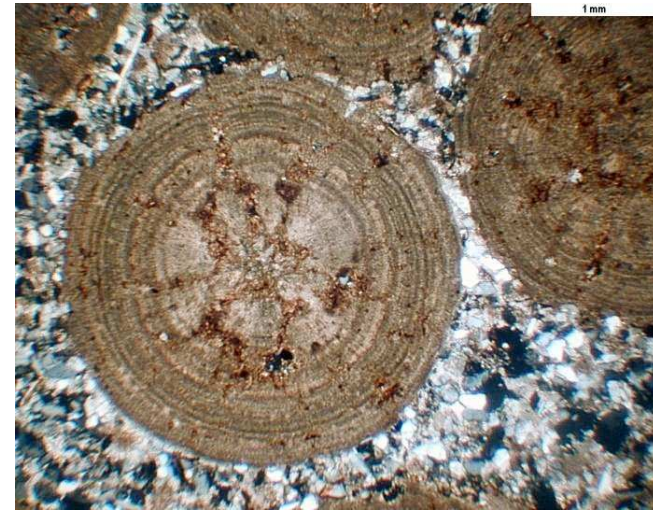
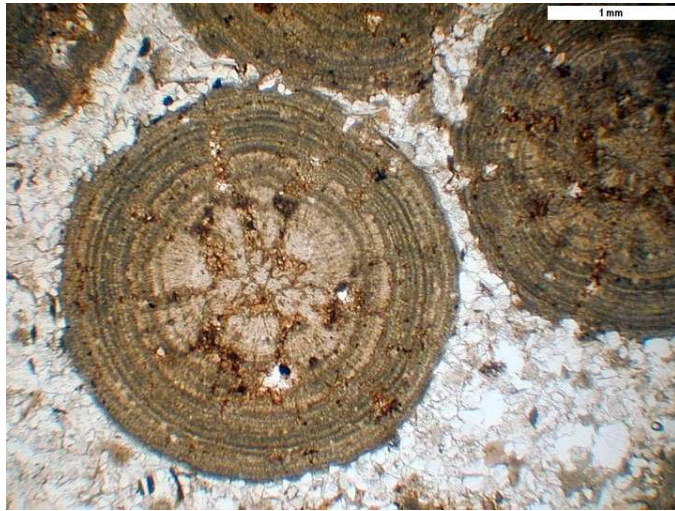
Karbonáty



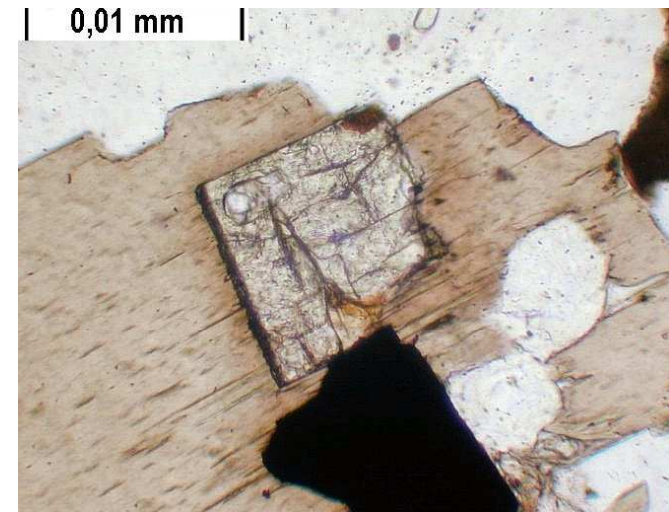
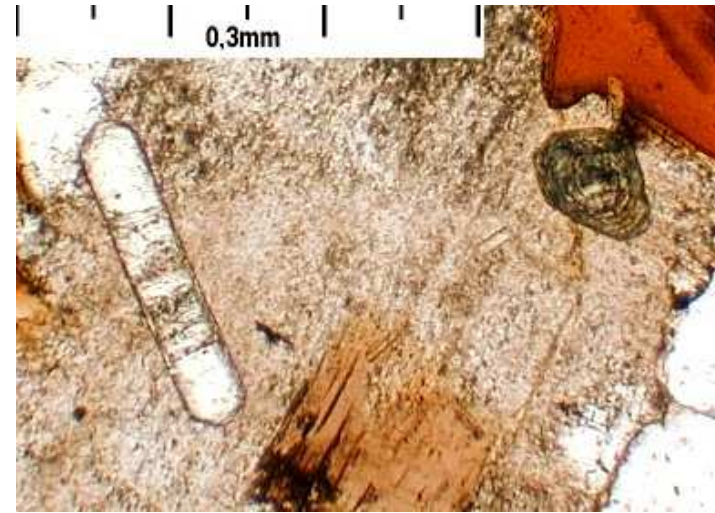
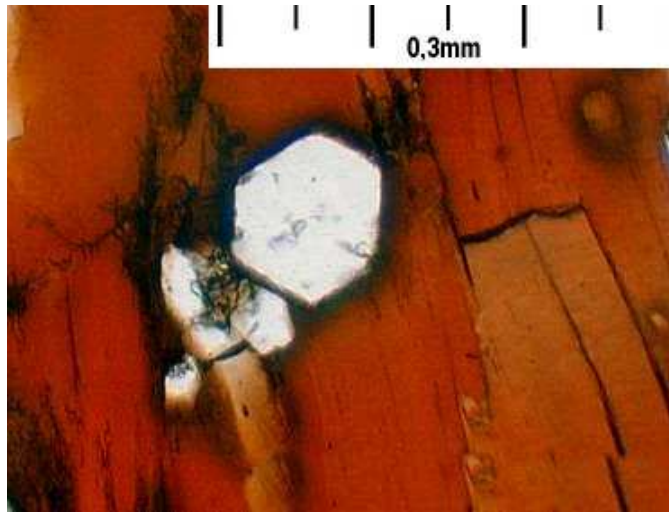
karbonáty



Karbonáty - aragonit



apatit



zirkon

