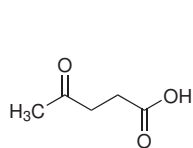
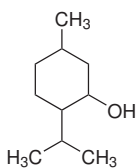


Domácí úkol č. 1

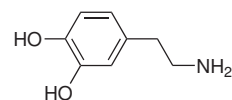
1. Systematicky pojmenujte následující sloučeniny:



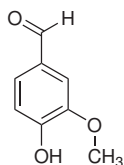
kys. levulová



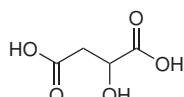
menthol



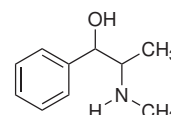
dopamin



vanilin

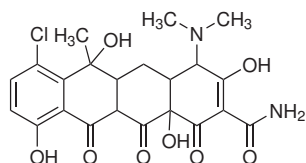


kys. jablečná

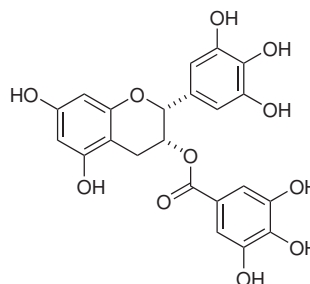


efedrin

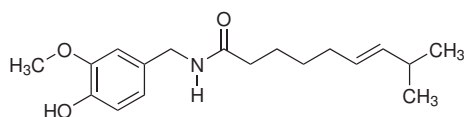
2. V následujících sloučeninách identifikujte přítomné funkční skupiny (označte je kroužkem a nazvěte) a určete skupinu s nejvyšší názvoslovnou prioritou.



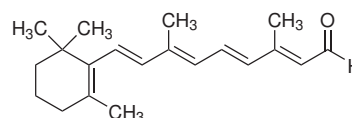
tetracyklin
(antibiotikum)



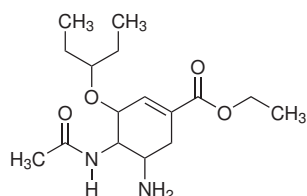
polyfenol v zeleném čaji



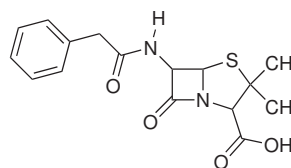
kapsaicin
(to pálivé v paprice)



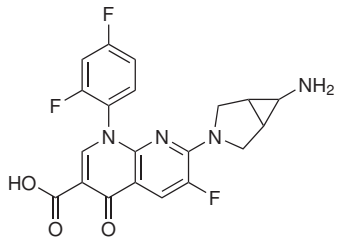
retinal
(Vitamin A aldehyd)



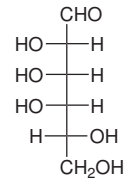
oseltamivir
(Tamiflu(R))



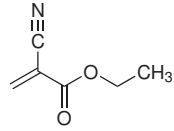
penicilin G



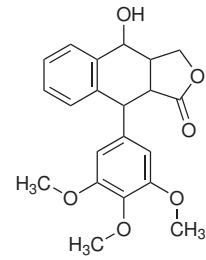
trovafloxacin
(antibiotikum)



D-talosa



"sekundové lipidlo"



podofyllotoxin
(cytostatikum)